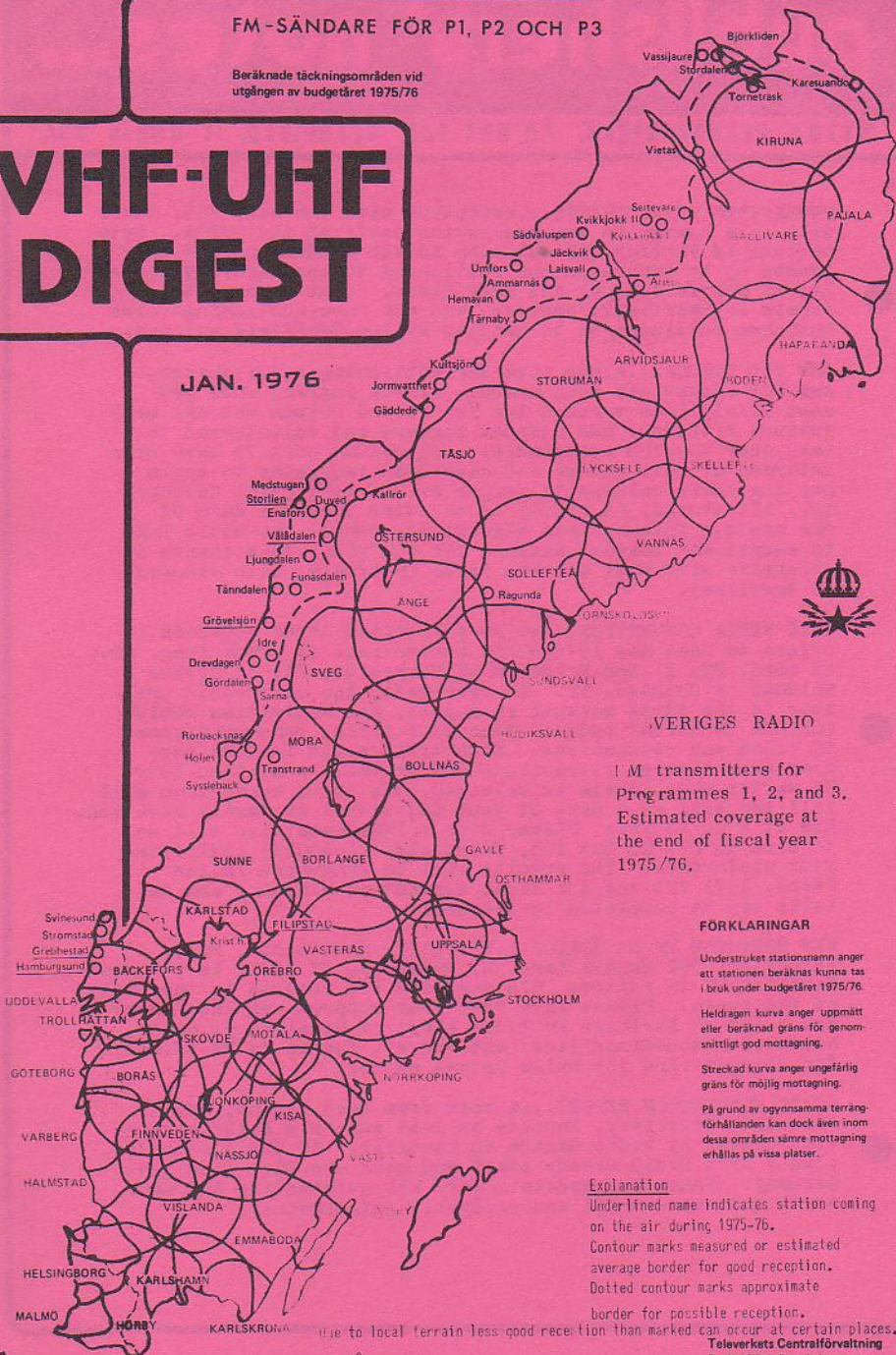


# FM-SÄNDARE FÖR P1, P2 OCH P3

Beräknade täckningsområden vid utgången av budgetåret 1975/76

# VHF-UHF DIGEST

JAN. 1976



## SVERIGES RADIO

1 M transmitters for Programmes 1, 2, and 3. Estimated coverage at the end of fiscal year 1975/76.

### FÖRKLARINGAR

Understrukt stationsnamn anger att stationen beräknas kunna tas i bruk under budgetåret 1975/76.

Heldragen kurva anger uppmätt eller beräknad gräns för genomsnittligt god mottagning.

Streckad kurva anger ungefärlig gräns för möjlig mottagning.

På grund av ogynnsamma terrängförhållanden kan dock även inom dessa områden sämre mottagning erhållas på vissa platser.

### Explanation

Underlined name indicates station coming on the air during 1975-76.

Contour marks measured or estimated average border for good reception.

Dotted contour marks approximate border for possible reception.

Due to local terrain less good reception than marked can occur at certain places. **Televerkets Centralförvaltning Radio-fjärrnätsektionen.**



# **publishers' notes...**

**WTFDA HEADQUARTERS, P.O. BOX 163, DEERFIELD, IL 60015 USA**

**PUBLISHING STAFF CHANGE...**effective with the next VUD, there will be a change in the publishing staff of the WTFDA. Pete Oprisko of Whiting, IN and John Zondlo of Hammond, IN have teamed up to take over the publishing duties formerly handled by Morrie Goldman and Gary Olson. Club headquarters remain in Deerfield, however, and all "non-publishing" club business continues to be handled at the Deerfield address.

**NEW VUD EDITOR...**along with the publishing staff change, a new VUD editor has been named. Clarke Ingram, whom you most likely know through the Scoreboard column and his many feature articles, has stepped forward and volunteered to take over the VUD editorship. All column editors have been informed of this change and have been requested to begin mailing their columns to arrive at Clarke's (5201 Colewood Dr., Pittsburgh, PA 15236) by no later than the 20th of the month. This applies also to any member who would like to submit any feature article for the VUD. This change is effective with next month's issue (February, with January 20 deadline).

**1976 WTFDA CONVENTION...**we have received three separate offers to host the 1976 WTFDA convention: 1) Frank Aden, Jr. of Bend, OR; 2) Don Erickson of Riverside, CA; 3) Morrie Goldman of Chicago, IL. In each case, the date would probably be the first weekend in August, and activities would include technical and non-technical talks, demonstrations, DX films and discussions. Side trips would include popular area tourist attractions and probably a station tour. No matter what locale is selected, the WTFDA convention will fill the bill as a part of your individual or family vacation. Now it's up to you: Please drop a line (postcard will do) to club HQ (P. O. Box 163, Deerfield, IL 60015) indicating your preference. The results will be announced in the March, 1976 VUD and the final convention planning and details can be completed by the host.

**NEW NORTHERN FM DX EDITOR...**effective next month, Fred Nordquist, 302 Sandra Lane, N. Syracuse, NY 13212 is the new Northern FM DX editor. His deadline for reports is the 10th of the month. Please give Fred your support--we know there are a lot of Northern FM DXers (East of Mississippi River, North of Mason-Dixon line) out there! Thanks to Ed Barboni for doing a fine job while he was editor.

**ANARC CONVENTION REPORT...**a note from Dave Browne, ANARC Executive Secretary, reports on last summer's ANARC convention hosted by Radio Canada in Montreal. 50 DXers attended, plus 5 from Radio Canada staff and even one DXer from West Germany. Tours and speakers were all outstanding and made for a most successful and enjoyable get-together.



# FCC TV NEWS - DATA

Dave Pomeroy  
KTWU-Channel 11  
Signal Hill  
Topeka, Kansas  
66604

January 1976

## AUTHORIZED STARTS

WGPR-62 Detroit, MI Oct. 17  
\*WHRM-20 Wausau, WI Oct. 23

## NEW STATION ON THE AIR (Unofficial)

KDTV-60 San Francisco, CA  
KMJUV-31 Sacramento, CA  
KMXN-23 Albuquerque, NM

## APPLICATIONS

San Jose, CA (48) 450kw 2614 AAT  
Dallas, TX (27) 1122kw 1668 AAT  
Ft. Worth, TX (21) 1803kw 1668 AAT  
Longview, TX (16) 400kw 737 AAT  
Rockford, IL (39) 741kw 170 AAT  
Sheridan, WY (12) 316kw 1216.3 AAT  
\*Austin, TX (18) 2032kw 1101.5 AAT

## CP's GRANTED

Ann Arbor, MI (31) 1096kw 1085 AAT

\*non-commercial, public television stations

## CALL LETTER CHANGES & ASSIGNMENTS

\*KAPT Fayetteville, AR  
\*KMTF Fresno, CA  
KTVX Salt Lake City, UT (was KCPX-TV)  
\*KLTM Monroe, LA  
\*KIXV St. Cloud, MN  
KIVV-TV Lead, SD  
KEVN-TV Rapid City, SD

## TRANSLATORS DELETED

K05FL Sapinero, CO

## TRANSLATOR GRANTS

K62AM Anchor Point, AK KTVA  
K59AR Anchor Point, AK KENI  
K12KE Hooper Bay, AK KYUK  
K03EH Crooked Creek, AK KYUK  
K11MX Goodnews Bay, AK KYUK  
K02IB Homer, AK KENI  
K11MY Homer, AK (was K02IB)  
K10JN Kongiganak, AK KYUK  
K13NS Newtok, AK (was K02HV)  
K12KC Pipeline Pump Station, AK #12  
K07NQ Platinum, AK KYUK  
K04IE St. George, AK KUAC/KYUK/KAKM  
K56AQ Sterling Highway, AK KTVA  
K67AU Sterling Highway, AK KENI  
K61AN Sterling, AK KENI  
K64AN Sterling, AK KTVA  
K10JM Stony River, AK KYUK  
K13NO Kayenta, AZ KOAI  
K06IN Willow Beach, AZ KLAS  
K07NP Willow Beach, AZ KORK  
K11MW Willow Beach, AZ KSHO  
K65AR Twentynine Palms, CA (was ch 80)  
K03EG Riverside, CO KMCH  
K08IN Riverside, CO KOA

## TRANSLATOR GRANTS (continued)

K11MV Riverside, CO KWGN  
K13NN Riverside, CO KBTV  
K56AP Princeville, HI KITV  
K63AM Hagerman, ID KBCI  
K65AQ Hagerman, ID KATD  
K67AT Hagerman, ID KIVI  
K69BD Hagerman, ID KTVB  
K07NO Inkum, ID KPVI  
K13NP Selden, KS KWNB  
K55BD Princeton, MO KTVO  
K60AU Spickardsville, MO KTVO  
K58AL Ely, NV KORK  
K13NR Ely, NV KLVX  
K09MM Paradise Valley, NV KBCI  
K11MJ Paradise Valley, NV KTVB  
K13NQ Ruth, NV KLVX  
K0810 Wells, NV KEKO  
K69BB Horse Springs Store, NM KOB  
K69BC Tucumcari, NM KVII  
K56AN Tryon, NC WUNG  
K07NR Lakeview, OR (was K04FA)  
K0610 Scottsburg, OR KEZI  
K14?? Arlington, VA (1kw)  
K63?? Antonito, CO (was K70DJ)  
K65?? Antonito, CO (was K76AX)

## FROM THE READERS...

FCC has granted to the Alabama Educational Television Commission licenses for six stations which were revoked recently: Dozier (2), Florence (36), Huntsville (25), Louisville (43), Mt. Cheha (7), and Mobile (42)...KQTV-2 operated at half power for two weeks in middle of December...It appears that ZFHQ-6 (ch. 11) Grand Bahamas is off the air...WSWB-35 still having money problems...WFTV-9 is now on new tower...KDTV-60, new on air in San Francisco, is having difficulty with area cable TV systems in getting carriage--station is Spanish language outlet...Target date for purchase of KVDO-3 as PTV outlet in Salem, OR was mid-November...Three new broadcast licensees (11 stations) were added to nation's public TV system in fiscal 1975--there are now 152 licensees operating 256 stations...The FCC has amended its table of allocations to indicate that use of channels 70 to 83 as translators is a secondary service...WNBP-13 has finally become interconnected with network service from PBS and CEN...Although reported received recently, KTN-46 in Ft. Dodge, IA has not gone on the air...WQEX-16 has gone to much higher power...Thanks this month to Frank Aden, Bob Baker, Clarke Ingram, Paul Traska, Morrie Goldman, and Ken Simon.



# FCC FM NEWS

Bruce Elving, Editor  
18 1/2 E. Fifth Street  
Duluth MN 55805

## New Stations Granted

CA Los Angeles KJLH-FM 100.38 10 w, j, (KJLH Compton CA booster reauthorized. This station may not be built, as KJLH itself granted an extension to its temporary authority to broadcast from Los Angeles away from Compton. LA area DXers should call or drop in at KJLH from time to time to see what's happening!)

CO Breckenridge K232AC 94.38 [KOSI-FM 101.1 Denver CO translator]; D 280 degrees  
CO Glenwood Springs K292AS 106.38 [KQIX 93.1 Grand Junction CO translator] 10 w, D, antenna 95, 195 and 266 degrees.

ID Soda Springs, all 10 w, coordinates 42-31-48; 111-41-0; D 72, 193, 315 degrees and translating Salt Lake City UT FM's: K272AG 102.38 m [KLUB-FM 97.1]

K292AR 106.38 r [KRSP-FM 103.5] Mutual K296AD 107.18 k [KSOP-FM 104.3] [miles]

ID Twin Falls 95.7 50000w; 590° 35, 82° IL Barrington \*88.5 10 [miles]

MO Princess Anne 102.5 50000; 500° 33, 80° MA Sandwich \*91.7 10

MI Winona K252AF 98.38 [WVNB 103.7 Lady-smith WJ translator], 10 w, non-DA.

MS Columbus \*90.9 10  
MT Big Timber (45-49-24; 109-56-15) K252AL 98.38 mg (KURL-FM 97.1 Billings MT translator), 10 watts, D, 47 degrees only.

UT Circle (47-25-38; 105-33-47) K249AC 97.78 [KIVE 96.5 Glendive MT] 10 D, 255°

NE Crete 103.9 3000 h, v; 250°  
UT Kanab K232AE 94.38 [KALL-FM 54.1 Salt Lake City UT translator] 10 w, 220° DA; A

UT Long Valley Junction K296AR 107.18 m [KALL-FM] 10 w, DA 35 and 180 degrees.

UT Panguitch K224AH 92.78 m (KALL-FM) 10 w, D 172 degrees.

UT Price K280AG 103.98 [KLUB-FM 97.1 Salt Lake City UT translator] 10 w, 40 degrees

VT Castleton \*91.3 10  
VT Stone 101.7 45 w h, v; 227° 15, 54 mi.

WV New Martinsville 103.9 940 h, v; 490°  
WV Gillette 93.5 3000 h, v; 277° 14, 47 mi

**On Air and DX Ready!**

AL Demopolis WMAN 106.3 3000h, v; 190°

AL Union Springs WQSI 104.9 3000h, v; 265°

AK Anchorage K60T 101.3 26000 h, v; -66° S

CA Modesto KITA 102.38 3000 h, v; 300° S, L

CA Redding KPVP-FM 98.18 g 30000h, v; 171°

CO Telluride KOTO \*91.7 10  
ID Blackfoot KBLI-FM 97.7 3000 h, v; 130°

IA Oskaloosa KIGC \*88.7 10  
IA Ottumwa KLEE-FM 97.7 3000 h, v; 170°

KS Lawrence KJHK \*90.7 10  
ME Sanford W5ME-FM 92.1 800 h, v; 532°

MA Walpole WMAA \*91.5 10  
MI Auburn Heights WAHS \*89.5 10 [km, 1

MI Cloquet WALK-FM 100.98 3000 h, v; 300°

MI Grand Rapids KXGR 96.78 [Hit Parade] 1700 h, v; 390° Y

MT Lewistown KLCM-FM 95.9 3000 h, v; -230°

NE Grand Island KRGI-FM 96.5 10000h, v, 420°; NJ Princeton Jct. WUPH \*90.3 10

NH Newport WGNL-FM 101.7 10000h, v; -110°

NH Plymouth WPNV-FM 100.7 1600 h, v; 350°

NY Binghamton W5AG-FM 97.5 3000 h, v; 530°

NY Brockport W5AT \*90.5 10 (Calls, too)

NY St. Bonaventure (Clear) W5E \*96.3 10

ND Belcourt K2YA \*91.5 19000 h, v; 160°

PA Lincoln University WLLI \*86.7 10  
UT Orem KOHS \*91.5 10

VT Middlebury WCMV 103.9 3000 h, v; -146°

WV Elkins \*90.3 10  
WV Fairmont W5FM \*7.9 -7000 h, v; 520°

WV Parkersburg KXIL \*5.18 50000 h, v; 500°

WV Eau Claire WUEC \*89.7 10  
WV Lander KDLY 97.5 25000 h, v; -420°

**On Air with Changes (Selected)**

AL Decatur W5SA 96.9 50000h, v; 300° [c

MO Clayton KFLC-FM \*99.18 100000h, v; 440° W

NC Laurinburg W5TS 96.5 100000h, v; 600°

OH Warrenfield WCLW-FM 105.3 50000w, v; 370°

SC Greenville W5SC-FM \*2.5 100000h, v; 630°

TX Houston KFMK 97.9 100000h, v; 440° S, Dolly, SCA, all g music (no preaching!)

TX Lubbock KYNX 105.7 100000 h, v; 160°

VA Harrisonburg W5FA \*90.78 19000 h, v; 730°

VA Lynden KLYN 106.5 100000h, v; 710°

WA Seattle K5LN 99.9 66000h, v; 1150°

WV Fort Gay W5GH \*90.7 7800 h, v; 205°

erratic schedule, r music, g programs.

WI Wausau WRFL now \*90.5, having moved from \*91.9; 77000 h, v; 1120°

**New Transmitters Installed; \$ ?**

AZ Arache Junction K5TM 107.1

CT Norwalk WNLK-FM 95.9 PA Clearfield

NY Dundee W5LR-FM 95.9 WCPA-FM 93.5

## Dual-City Identifications Granted

CA Tracy K5RT 100.9 adds Stockton

CO Loveland KLMO-FM 104.3 adds Boulder

MO Hannibal M5RC 92.9 adds Quincy IL

NC Laurinburg W5TS 96.5 " Fayetteville

PA Mercersburg WRCV 92.1 " Lorton PA

**Deletions (see also next page)**

AR Fort Chaffee K24AG 92.7 (KFFM-AM

translator which had Vietnamese local

originiation); folds along with the

Vietnamese processing center.

CA Bishop K252AA 96.3 (KILS-FM 102.7

Los Angeles CA translator)

CA Elk Grove KEGH \*90.1

ID Ketchum K288AI 105.5 (KFMA 92.7)

MO Hillview KHKM \*88.9 IUT Ephraim

NY Dix Hills W5DC \*86.9 IKEPH \*89.5

TX New Boston K860-FM 95.9

(above average terrain). Compare this "41" figure to the former 100' figure given in Mike Dorrner's "Bio Ten Report" (VUD, Oct., 1975, p. 4). Shows why I do not rely on height figures supplied by ten-watters! (13, 46 miles; CA St. Helena KVMX 95.3 3000 h, v; 250°/ CA San Diego KYNX 96.5 30000 h, v; 540° (permit to increase height, reduce power was given).  
FL Coral Gables W5OP 105.1 160000 h, v; 600° 44, 100 miles. Here's a super-maximum power station being allowed to increase its height without having to lower its power. What's to stop 'em from going to 2000' with 68 miles (primary and 115 miles secondary coverage? GA Camilla 105.5 3000h, v; 300°  
IL Morrison W5MS from \*91.5 to \*90.7 10  
IA Sioux City K5EZ 97.9 62000h, v(260°)  
KY Glasgow W5GC 95.1 100000h, v(390°)  
KY Lexington W5GG 98.1 50000 h, v; 551°  
LA Ruston KRUS-FM to 107.5 (from 107.1) 100000 h, v; 490° 37, 90 miles. [500°  
MD Baltimore W5JC \*91.5 50000h, 40500w  
MI Muskegon W5WQ 104.5 has v  
MS McComb W5BI 105.7 100000h, 6000w, 390°  
MO Kirksville KRXL 94.5 adds v  
MT White Sulphur Springs K244AE 92.7 to 96.3, no K252AD; rebroadcasting K5VW-FM 96.7 Belgrade WI instead of KOPR 106.3 Great Falls MT.  
NE Holdrege KUVR-FM 97.7 2850 h, v; 240°  
NJ Atlantic City W5VY 95.1 adds v  
NY De Pew W5LK 93.7 adds v. Mystery SCA  
NY Endicott W5RV 105.7 35000 h, v; 570°, 33, 79 miles. Delete SCA (used only for metering).  
NY Southampton W5RJ 95.3 2350 h, v; 340°  
NY Syracuse W5ND 107.9 27500h, 11500w, 640°, 33, 76 miles. OH Greenville  
W5VO \*88.3 78 h, v; 96° 3, 15 miles.  
OK Okmulgee KBEV from 104.9 to 94.3 300° (3000 h, v). Ref. VUD, Dec.'75, p. 8: PA Allentown W5XW 104.1 50000h, v; 500°, 33, 80 miles. PA Philadelphia  
W5YP 94.1 12000 h, v; 890° 33, 74 miles.  
TN Chattanooga W5OD-FM 96.5 1080° (100-000 h, 88000w) E  
TN Franklin W5ZD-FM 100.1 adds v  
TN Shelbyville W5AL-FM 102.9 100000 h, 60000w (510° 17 and 90 miles.  
TX Dallas KRSM from \*89.1 to \*88.5, 10  
TX Mt. Pleasant KPXI 100.7 100000h, v, 155° 24, 82 miles. VA Fredericksburg  
W5VA-FM 101.5 11500 h, v 61° 10, 43 mi.  
VA Roanoke W5LO 99.1 1990° (140000h, v)  
WA Spokane K5XR-FM 93.7 55000h, v; 2380°  
" KIEN 98.9 28000w, 9000w; 285°  
WV Charleston W5FS 96.1 50000 h, v; 350° (92.7 translator of W5ES in Charleston WV to be discontinued?)  
WI Highland W5HI \*91.3 adds v [v, 820°  
WI Frederiksted W5IS 106.1 19500h, 1500°  
MEXICO Ciudad Juarez XHEM 103.5 6000 h, v; 440° S, English, p. rock.

[According to FCC news release this station is increasing height to 24 feet

## Formats/Networks

CA Los Angeles KLVE 107.5 Spanish, L, §  
 CA Sacramento KWOD 106.5 r  
 CT Groton WSUB-FM 105.5 p  
 GA Atlanta WHAS \*86.5 p; WREK \*91.1 p  
 IL Sullivan WFWA 106.3 kr (from k)  
 IN Indianapolis WIFE-FM 107.9 NBC (on hour)  
 IA Muscatine KFHM 99.7 p; should be § nov.  
 MD Halfway WGCN 96.7 A (from I)  
 MA Worcester WAAF 107.3 p  
 MI Detroit WJR (AM) and WWJ(AM) switch net-  
 works, WJR getting M; WWJ C. Any N at all  
 on WJR-FM 96.3 or C on WWJ-FM 97.1 between  
 6 a. m. and midnight M-F?  
 MN Moorhead KIDA 99.9 rp (from m)  
 NJ Princeton WPRB 103.3 pj  
 NJ Teaneck WFUD \*89.1 p (from r)  
 NM Las Cruces KACT 103.1 p  
 ND Minot KCJB-FM 97.1 k (from m)  
 SD Winner KMYR-FM 93.7 E ("N")  
 TX Bryan KORA 98.3 k (from m)  
 TX Dallas KZEW 97.9 p  
 TX El Paso KLOZ 102.1 k (from r)  
 WI Rhyland Center WRCO-FM 100.9 Y (from E)  
 no SCA confirmed.  
 MEXICO Ciudad Juarez XHPX 98.3 m, §  
 XHEM 103.5 English p, §  
 XHTO 104.3 m, § (having moved from  
 100.9) probably still English-Spanish  
 Tijuana XHRM 92.5 § soul, presumably English  
 XHOS 95.7 § Latin, Spanish only.

## Call Letters Assigned

CA Salinas 100.7 KMYT-FM (from KMYT)  
 CO Colorado Springs 92.9 KSPZ (KVOR-FM) §  
 FL Miami 96.3 WMJX (WMYQ)  
 GA Atlanta 99.7 WLTA (WLTA-FM)  
 IL Crest Hill 98.3 WCCD  
 IA Newton 95.9 KLVN (K"lovin") (KCOB-FM)  
 ME Scarborough 106.3 WUJO-FM (WUJO)  
 AL Birmingham \*90.3 WBHM  
 CO Pueblo 100.7 KZLO (from KDZA-FM) [on air]  
 FL Crystal River 98.5 WRYO (WXTR) Not yet/  
 FL Goulds 98.3 WGLY (WOOA)

## Stereo Stations

CA Merced KMYT 97.5  
 L Evanston WNUR \*89.3  
 IN North Vernon WDCM-FM106.1  
 LA Lake Charles KSNS 96.1; according to  
 Mike Dorner KSNS is the nation's longest-  
 held construction permit; 10 years and  
 still not on the air!  
 ND Belcourt KEYA \*88.5 heard with mr and  
 fiddle music, P; has been off and on.  
 OH Bucyrus WRCO-FM 92.7  
 OH Cincinnati WAIF \*88.3 hard rock  
 OH Miamisburg WFCJ 93.7  
 TN Knoxville WIVK-FM 107.7  
 TX El Paso KAMA-FM 93.1, Spanish, L.

## Deletions (see also previous p.)

NY Briarcliff  
 Manor  
 WRW  
 107.1 p  
 SCAL (67 kHz) activities  
 AL Huntsville WLRH \*89.3 TB  
 CA Arcadia KPCC-FM 107.1 adds a SCA  
 CA Gilroy KFAT 94.5 music  
 CA San Francisco KEAR 97.3 adds SCA.  
 CA San Mateo KSOL 107.7 Q (dropping M)  
 CO Denver KHON-FM 95.7 adds SCA  
 FL Tallahassee WGLF 104.1 music  
 IL Granite City WGNM-FM Q  
 L Paris WACF 98.5 farmad at times a  
 relay of WFRS (AM); FT.  
 IL Springfield WDBR 103.7 no SCA heard  
 drop SCA listing for WDBR.

## Calls (Continued)

MN Grand Rapids \*91.7 KAXE  
 MS Pascagoula 106.3 WGDW (WPEN)  
 NH Hanover 99.3 WFRD (WDCR-FM)  
 NM Albuquerque \*91.5 KIPC, §  
 NY Utica 104.3 WKGW (WRUN-FM)  
 OH Athens 105.5 WXTQ (WATH-FM) §, r  
 TN South Bend WWJY 101.5 (WSBT-FM)  
 IA Burlington 107.3 KGRS (KBUR-FM) [-FM]  
 MO Braddock Heights 103.9 WZYQ-FM (WMHI/  
 MO Cambridge 106.3 WESP-FM (WCEM-FM)

## Readers' Reports and Comments

The FCC is considering expanding its AM-FM nonduplication rule (VUD, Dec., p. 7) even beyond what was originally proposed—probably to include stations in cities as small as 10,000 population. Dolby Laboratories tells me "While it is obviously possible for a monophonic FM station to use our broadcast processor, so far as we know all users transmit stereo programming. The signal to noise of mono reception is so far superior in much of the mono listening area that the greatest need for 25 usec pre-emphasis, which permits higher modulation levels, is in stereo." (I questioned the 10-watt Dolbyised WITR Henrietta NY as being stereo; they say "It is possible WITR is mono. Our records do not indicate its mode." Stations like WFRD 99.3 Hanover NH are given by Dolby as having their equipment; WFRD not otherwise known to have stereo may thus be assumed to be stereo. WGTB \*90.1 Washington DC claims Dolby, but they did not buy their equipment from Dolby and the company thinks they are using "homebrew" equipment to do this—legal.)

A Lane College student says that KLCC \*90.3 Eugene OR would like to separate the station from the school and go commercial. A new channel, or just more broadcasts like Texaco's Metropolitan opera, which so many "noncommercial" stations carry with too many commercials to be legal? Fresno's CA's KARM-FM 101.9 became KFRY, thought to add to the confusion among KFRE and KFYE, all Fresno stations, but nobody including the FCC so far seems to care.

Not on the air: KSDL 92.3 and KAMA 93.1 both El Paso TX. Not on: XHH 100.7 and XHGH 105.9 Ciudad Juarez, Mexico. XHPX 98.3 and XHEM 103.5 Ciudad Juarez both on 24 hours.

WMZK 97.9 Detroit is ethnic 8 am to 1 am; m 1-8 am. Nationalities served include German, Spanish, Arabic, Polish, Korean, Italian, Bulgarian, Greek, Swedish, Russian, Norwegian, Armenian, Croatian, Lithuanian, Maltese, Slovak, Ukrainian and the India hour. The programs are

IL Urbana WILL-FM \*90.9 farm  
 IN Ft. Wayne WMEF 97.3 music  
 IN Muncie WLBC-FM 104.1 farm  
 KS Lawrence KANU \*91.5 TB?  
 NM Albuquerque KHFM 96.3 Muzak (c on  
 main carrier; not k as reported in  
 Nov. VUD, p. 32)  
 NY New York WRFM 105.1 adds SCA; Mor-  
 mon Church readings?  
 OH Columbus WTVN-FM 96.3 drops SCA  
 WNCI 97.9 drops SCA  
 NY Binghamton WISG-FM \*89.3 §, TB  
 PA Red Lion WGCB-FM 96.1 TB for blind  
 TX Lubbock KTXK \*91.9 adds SCA & 10 W!  
 WV Parkersburg WXIL 95.1 adds SCA  
 WI La Crosse WLRX 104.9 Muzak; has v  
 PR Aguadilla WTPM 92.9 adds SCA  
 WA Seattle KEZX 98.9 adds SCA  
 Ont. Ottawa CBOF 102.5 talk and music  
 program relay, French, to new Cornwall  
 station (details in Canada column)  
 Ottawa CBO-FM 103.3 Program relay of  
 CBO (AM) to other Cornwall station  
 Toronto CHFI 98.1 delete SCA  
 CHUM-FM 104.5 music  
 PQ Montreal CKMF 94.3 adds SCA.

## Calls (Continued)

OH Dayton \*90.1 WOPB  
 PA Freehold 103.1 WACM  
 SD Aberdeen 94.9 KQAA  
 TN Clinton 104.9 WYSH-FM (WCFM)  
 TN Jackson 104.1 WKIR (WTJS-FM)  
 TX Amarillo 101.9 KWAS  
 WY Lyman 105.5 K288AB (erroneously  
 listed as K288AN) [heard with m]  
 Manitoba, Winnipeg 101.5 CJUM (on air/  
 Ont., Ottawa 93.1 CKCU  
 PQ St. Fabien (-de-Panet?) 96.5 CBFQ-FM  
 NM Albuquerque 107.9 KFMG  
 OR Newport 102.5 KNPT-FM  
 TN Nashville 92.9 WZEZ (WAME-FM)  
 TX San Antonio \*91.7 KRTU  
 New Grant (Initial Decision)  
 NJ Ship Bottom 100.1 3000 h.v.; 300'

usually in native tongues, according to an article in the Detroit Free Press. "Occasionally the dialogue will be 59-50. . . WMZK spot-checks its radio shows to make sure emcees aren't using the air time as a forum for blasting political regimes in the father (or mother) land. The station has interpreters who monitor broadcasts and have a list of questions to answer. . . WQRS-FM which plays classical music during the weekdays, devotes seven hours Saturday and Sunday to ethnic music." A writer asked about the deadline for this column. There is none—FM news is welcome any time and is put to use whenever it comes, much of it being keypunched on a daily basis, and saved for this column when typing day comes. I'd rather not mention a deadline so that my work is spaced out through the month, without a deluge occurring just before deadline. Going through half a pound of FCC news releases every week (much of it garbage) takes enough time before deadlines. Canada FM news has been piling up, even despite the mail strike, but now the CRTC informs they will stop mailing out information about new stations and applications. Unless an alternative form of information is made available, information on Canadian FM will become exceedingly stale. CFBC-FM 98.9 St. John NB also id's as "Cable 10."

A rebuttal to my announcement that I am going to list p-rock stations (VUD Nov., p. 8) separately from other rock stations from a person who thinks the decision is a mistake. "Some months ago you stated that you didn't care to make a distinction between beautiful music and MOR stations because there wasn't much difference between them. In my opinion, the difference between b and m stations is more pronounced than that between p and r stations. In both cases, however, there are many borderline cases, and I think here is where you are going to run into trouble. Finally, quoting from page 6 of the Atlas, 'Strict use of only a few categories in the listing of programming formats serves to ensure that the information given is mutually exclusive and exhaustive.' I'm sorry you have abandoned that policy." Anybody else feel that way?

For folks in the central Iowa cities of Des Moines, Urbandale, Clive, West Des Moines, Windsor Heights and Ankeny who have their FM radios soldered to the cable they can hear "KBLE" with progressive rock on FM 90.7 and TV audio channel 4.

KLVE 107.5 Los Angeles, now Spanish, will once in a while play an English-language record if it fits their sound. WWRN 92.1 West Palm Beach FL is "beautiful music"; stereo?

One reader was disappointed that details of the WMRV 105.7 Endicott NY power increase did not appear in the column. This change really caught me off guard in its swiftness; some stations scheduled to change frequencies, such as WTCH-FM Shawano WI from 100.1 to 99.3, have clung to their old channels for 2-3 years, while others like WMRV move like lightning. Details on WMRV's new facilities can be found in the fine print this month.

Some new Tijuana, Mexico, formats are given previously, with XHQ 95.7 and XHRM 92.5 especially fouled up, both alternating between soul and Latin music. "Tijuana FM just a mixed up mess—could change again during next full moon." Adding confusion, the Nov. 22, 1975 Billboard says "The San Diego [Tijuana, most likely—ed.] soul music station at 96 on the dial is off the air pending completion of a new transmitter, etc.; but president A. Curtiss Minnifield reports the station will be back on the air within 6 weeks at a new frequency and 100,000 watts."

WXIL 95.1 Parkersburg WV on air with r; "the most professional sound the area has ever had. It's also the strongest FM signal ever heard" at this point 20 miles distant. On the air: WMRT \*88.3 Marietta OH 9200 h, v; 205'. If you hear this station do not write to the chief engineer as he will not verify; other members of the staff may verify. KLYX 102.1 Clear Lake City TX now with all news, NIS, still keeps its S pilot on! WAIF \*88.3 Cincinnati comes in with a strong signal; sounds like 10 kw, not 1.6 kw! Looks like 24 hours, S, hard rock (but they should be sharetaming with WJVS). A new \$13 SCA adapter from p. 109 of the Lafayette catalog has opened the world of 67 kHz to yet another enterprising VUD reporter. He likes it, but has a schematic for a "very superb adapter" which can be built for around \$23. Speaking of equipment, the Radio Shack FM trap is helping a New York state DXer cut down on overload from powerful locals.

KQDY 94.5 Bismarck ND now on with a dramatically improved signal signs on with k at 0600; going to m later in the day on FM. CKX-FM 96.1 Brandon, Man. used to broadcast unmodulated carrier all night. Now they relay CKX-AM through the night with mono rock music; they leave the stereo pilot on. A trend away from proper identification from ND FM's: KYTN 94.7 Y95; KMOT 93.7, M93; KFVR-FM 92.9, Y93 Musicradio, now 24 hours.

In a little-noticed action, the FCC amended its rules to permit transmission of visual material via SCA for radioprinting in fields like financial, educational, medical and marketing. WCLR 101.9 Skokie-Chicago has it (with voiced Mormon Church readings about 11 p. m.), and WLVE 94.9 Baraboo-Madison WI believed to be using it (with no audible voiced SCA transmissions). Could presage

a discouraging trend, whereby reports, like farm and market news, will go the teleprinter route, eliminating much of the announcing SCA stations. Those of us with \$13 adapters will not be able to eavesdrop on such transmissions, and I'll probably eliminate all known print-only SCA stations from my listings for that reason, just as I eliminate all teletype-only SCA stations now. Television pictures can be transmitted by SCA "slow scan," the transmission of still images for instruction or store display. WGGL #91.1 Houghton MI is to experiment with this. Audio will be at 41 kHz, with the pictures on the more conventional 67 kHz channel; and slow-scan can only be transmitted when the main channel is mono, not stereo. WGGL tells me they are not sure the experiment will be a success, but they do want to do creative things with their SCA, whether or not slow-scan pans out.

Crystal River FL, the home of a construction-permit holder WRYO 98.5, is not seen by at least one reporter as a very promising place to have an FM station. "In reality I can't imagine why a station would be started there as it won't serve much population! The station WDGW 106.7 in Leesburg has been off for some time. It has apparently been replaced by WELE which plays country." No, WELE is on 105.9 in De Land. WDGW is listed as being owned by WLBE (AM) Leesburg, so maybe a collect call to WLBE at 904-787-2790 would net one of our FL reporters some interesting information on one of their dormant home-state stations.

The "new" WXTQ 105.5 Athens OH usually gives its "ID" as "Q-105." Sounds roboted; \$; brilliant audio quality. And for public service they offer "(gasp! groan)" 'Q-Tips.' I ask, how A) vulgar, B) disgusting, or C) both of forementioned can these 'Q-guys' get? It must end somewhere, but where and when? I have to start in getting in agreement with you about it since my first listening to a 'Q' station." WHOK-FM 95.5 Lancaster OH used to have a distinctive station slogan—"Your voice in the Hocking Valley," named after the Hocking River valley; now it's "the mighty '95'" for WHOK-FM. "Me thinks I concentrate more on SWBC and forget American broadcasting. But next, it'll be 'BBC World Service. . . Bigger and better constantly.' As the song 'Where Have all the Flowers Gone?' asks us. . . 'When will they ever learn?'"

WFMA 100.7 Rocky Mount NC switched the ABC network off its 47 kHz subcarrier and went stereo; Muzak still on 67 kHz; main carrier still "Country Loving." WVOT-FM 106.1 Wilson NC to offer separate stereo programming and more power in the new year; new calls expected, too. WCPS-FM 104.3 Tarboro NC plans to go \$ soon with separate calls, also. WVWR Roanoke VA now on air with improved signal on its new channel of \*89.1, 100000 h,v; 1970', \$, P.

A user of Realistic's QTA-770 is well satisfied with his Radio Shack receiver, bought on sale for \$350.95 (normally the set sells for \$599.95), except the "auto-magic" AFC, activated by your hand on the tuning dial, causes you to notice the local stations more rather than weaker signals nearby on the dial, but it can be disengaged. "It's best to FM DX without this feature as a nearby local strong station could possibly be tuned in instead. The FM muting is nice to have but the threshold is set too high that a moderately strong signal is needed to break through it. Radio Shack should either redesign it for minimal threshold or make the muting user variable. For the price, it seems as if it's a wasted feature." Yes, WCVO 104.9 Gahanna OH is stereo, but "I have a notion to report them to Detroit as 95% of the time I see them broadcast in \$ in actuality it is in mono! I know for sure that I've seen other reports of similar goings on. When will they all learn?"

OFF THE AIR: WVOI Tisbury MA, on Martha's Vineyard, disappeared from the air, and the Cape Cod Times investigated. WVOI's telephones were disconnected, and the station went off the air because of "serious financial difficulties." The owners are reportedly trying to find new sources of revenue. WVOI was on 95.9, but has a permit to move to 92.7, if they ever return to the air. In Puerto Rico, the FCC has authorized dual-language TV-FM programming, with participating FM stations allowed to broadcast in English up to 15 hours a week or 3 hours per day the dialog of TV programs, with noncommercial stations cooperating with commercial stations taking steps to make sure their entire output is strictly noncommercial.

Have a happy, prosperous, healthy and DX-filled new year! And thanks for the support of this column and the fine words many of you have had to say about it. Contributors this issue: Frank Azen, Jr., Bend OR; Robert Baker, Humboldt IA; Andy Rolin, Charleston IL; Bill Coleman, Jr., Rocky Mount NC; Dick Clark, Pittsburgh PA (who's moving to El Paso TX); Michael Dalton, Clearwater FL; Wm. D. Vickerman, Williamsport PA; Mike Dorner, Jr., Metairie LA; John Ebeling, Bloomington MN; Robert Eddy, Newport OH; Paul L. Gaines, Detroit MI; Morley Kahn, Cully Laboratories, San Francisco CA; Nick Lombardi, Atlanta GA; Mark S. Lucas, Lancaster OH; Fred McCormack, Fargo ND; Eric Norberg, Portland OR; Rod O'Connor, Southwest Harbor ME; Jim Pizzi, Orcutt CA; Kenneth R. Simon, W. Palm Beach FL; Joseph Smith, Jr., Johnson City NY; L. Weil, East Rockaway NY.



## DOMESTIC BROADCASTING AND VHF DXING IN SWEDEN

BY LARS A. RYDÉN

In Sweden, like in a number of other European countries with government-operated broadcasting, programs are provided by one organization, whereas the distribution of the programs is undertaken by another party. In Sweden, the program production is undertaken by Sveriges Radio AB (=Swedish Broadcasting Corporation), whereas land lines and transmitting facilities are operated by the Telecommunications Board.

The Swedish public is offered three broadcast and two television programs. In broadcasting, the First Programme (usually designated P1) provides a general service. The Second Programme (P2) is a combined educational [daytime] and classical music [nighttime] channel. The Third Programme (P3) broadcasts light music, phone-in request programs and other DJ shows. This format somewhat resembles North American broadcasting. However, there is no advertising in the Swedish programs. P3 is on the air around the clock; P1 and P2 are on for 16 to 18 hours a day. All programs are broadcast nationwide. However, three times a day the P3 net is split up into a dozen regional nets, for fifteen-minute regional broadcasts. These broadcasts originate from studios in the particular region (and this is about the only chance to report individual transmitters in Sweden at present).

According to a new plan that is going to be implemented in 1976-77, these local programming activities are going to be further expanded. Instead of the present 12 regional studios, there will be 24 local studios, one for each of the provinces of Sweden. The local studios will produce 10 to 15 hours weekly of local programs. They will still be broadcast over the P3 FM stations.

All three broadcast programs are transmitted on FM. Additionally, P1 is on AM (both long wave and medium wave), but very few people in Sweden listen to AM these days. It has been the goal to provide interference-free reception of all the programs in all parts of the country. This has been achieved through the erection of a network of FM transmitter sites spread over the whole country. Each one of these sites is equipped with three FM transmitters of 60 kw each (one for each program), plus one VHF TV transmitter of 60 kw (for TV1) and one UHF TV transmitter of 1,000 kw ERP (for TV2). The antenna mast is 1,000 feet high as a rule, and the location is on the top of a hill or a mountain range. In addition, there is a considerable number of smaller transmitters and repeaters in places with difficult reception conditions. TV is broadcast in 625 lines, color, PAL system. For further details, please consult your WRTVH.

In most Swedish homes it is now possible to receive the three broadcast programs on FM without an outdoor antenna. Most people listen on portables with whip antennas. An increasing number of people are buying stereo tuner/amplifiers, but to obtain good reception it is usually adequate to put up a 300-ohm folded dipole behind the bookshelf. Since all the three programs are transmitted from each of the tower sites, you can just fix your antenna towards the nearest transmitter. Many home receivers are equipped with pushbuttons, which can be pretuned and set to the three programs, thus eliminating the need for retuning each time you wish to switch from one program to another. The TV sets are equipped in the same way.

After many years of experiments (and an internal fight to introduce an alternative system), it has now been decided to go ahead and introduce the multiplex stereo system on all Swedish FM transmitters. This should be finished by 1977. Already now, the Stockholm P2 transmitter, which was the one utilized for the experiments, is broadcasting in stereo most of the time.

The introduction of stereo broadcasts may induce some people to put up more efficient antennas, and this may increase the use of outdoor antennas. However, on the market today you will only find simple dipoles (for window mounting) and a three-element yagi for masts.



There are no rotors on the market, since there is no need to rotate your antenna.

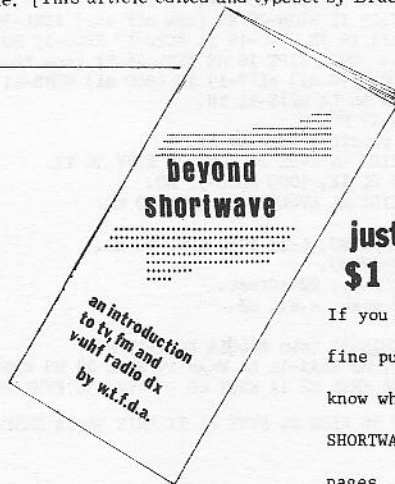
VHF DXing in Sweden As you can understand from the above, FM and TV DXing is no great affair in Sweden. With three nation-wide networks, except for the short regional programs, domestic DXing at present is rather uninteresting. There are some VHF DX fans around, anyway. In the early days of Swedish TV, about 15 years ago or so, TV DXing was quite popular. Today, TV and FM DXing is done on an occasional rather than systematic basis.

In Stockholm it is fairly normal to listen to and watch Finnish stations on tropo from early in the season (March through September). In the summer months (May through July), FM stations can occasionally be heard from most of the countries on the European continent (on sporadic-E skip) as far as from Greece. Both on FM and VHF TV Italian stations seem to be at a very favorable distance for such reception in Sweden. Among the most interesting stations heard in Stockholm last summer were the AFN stations at SHAPE headquarters (4 kw) and in Brussels (0.9 kw). Further, Great Britain, France, Spain, Yugoslavia and Greece provided interesting FM reception. Similar conditions appeared on TV.

My own FM reception equipment consists of a Pioneer tuner/amplifier model SX-828. The antenna at present is a three-element yagi directed towards the southwest; i. e., western Europe! Under normal conditions; i. e., wintertime, I can regularly hear about 30 different Swedish stations (i. e., 10 transmitter sites) located up to about 200 miles away. I also have a portable Sony ICF-8000 (the successor to the TFM-1600) with a quite sensitive FM—which managed to catch FEN Okinawa at 1100 miles in Tokyo last summer. I watch TV on a 26-inch German-made Nordmende (color) with antennas fixed towards the Stockholm transmitters. This happens to be in the southeast direction, so I also expect to see some USSR TV this summer.

-----

The accompanying map shows the locations of FM transmitters for Sveriges Radio's transmitters for Programmes 1, 2 and 3 with approximate coverages. It shows estimated coverages as of the end of fiscal year 1975/76. WTFDA member Lars A. Rydén resides at Majvägen 6, S-175 40 JÄRFÄLLA, Sweden. Before returning to his native Sweden, Lars lived in Tokyo, traveling extensively in the Orient and North America, and listening to FM radio on a portable. [This article edited and typeset by Bruce F. Elving.]



**just**  
**\$1** FROM HQ

If you haven't yet invested in this fine publication, you really don't know what you're missing! BEYOND SHORTWAVE features 31 informative pages. Order from HQ today!

# WESTERN TV DX

Dennis Park Smith  
50 Manzanita Way  
Paradise, California 95969  
Telephone: 916 877-2975  
Deadlines: 10th of month

January 1976

DX conditions for Es and tropo for October and November have been reported by three observers--Fred McCormack in North Dakota, Bob Cooper in Oklahoma, and Pat Dyer in south Texas. Some others noted no real DX lately, though Patrick Martin in Oregon did a lot of MS DXing in late November.

Tropo DX wasn't much in the last few months. October saw little to speak of, and November found a little in early month in North Dakota and south Texas, VHF TV out to 355 and 515 miles; and 7-8 December saw the start of VHF-UHF tropo seen in Oklahoma up to 860 miles. Es picked up in November as compared to October. Of course, more Es was seen further south (more days with higher MUF's). South Texas was particularly good while Oklahoma was fair. North Dakota was slim, though some aurora-induced Es was noted on 9 October and 2 November which was not seen further south.

		nite	eve	eve	eve	eve	aft	eve	eve	am	aft	eve	am	aft	eve			
<u>Es</u>	Oct	2	11	12	31	Nov	2	4	16	19	20	21	22	23	23	26	26	30
Nr. reporters		1	2	1	1		1	1	1	2	1	1	2	2	2	1	1	1
MUF at least		1053	2	2	6		4	3	2	2	2	951	3	4	2	3	3	2
							eve	eve	am	noon	aft	eve	eve					
	Dec	1	3				1	2	5		5	6						
		1	2				1	1	1		2	2						
		3	949				3				95.3	986						

Fred McCormack, Des Lacs, North Dakota 58733	(November)	(CST)
2 tr 0922 CBKST 11 Saskatoon Sask 3345R 355	2158 CKSO-? 3 Ont	4544R
0929 CFQC- 8 Saskatoon Sask 3032 355	2320 WGR - 2 Buffalo NY	3333R1155
0948 CKYD- 12 Dauphin Man 4043N 230	2334 WLWD 2 Dayton OH	4435*1035
AE 2130 CBOT 4 Ottawa (Que) 3333R1240	2335 WSAZ- 3 Huntington WV	3445*1175

CKYD-12 (new logging) is a new satellite of CKY-7 Winnipeg.

Bob Cooper, Jr, Route 5 Box 782, Guthrie, Oklahoma 73044 (6 Sep- 5 Dec) (CDT; CST 26 Oct+)

The early fall season, after the false start around Labor Day (in last report), turned out to be a big disappointment. A few new stations have been added, but they represent for the most part a few new-to-air and a handful of missing holes in my under-500-mile radius. I am reaching the point where some careful thought is going to have to go into the antenna system for 1976 and beyond. The limits of the present system have about been reached. I hate to do it, but it appears that a super UHF translator system is a must and some moveable (if not rotateable) large low-band arrays for pin-pointing some specific channel-4 and 5 stations that have eluded me to date. When one approaches the 650 mark, the new ones come tough, and seldom by chance. It almost takes deliberate planning to add new ones, at some investment in time and materials to add more than one at a time. The materials I have, but the time is another matter.

- Sep 6: tropo tune-in 0810 KHNE-29 KZNE-19 NE K18AA KS KCBJ-17 MO;  
t/in 0930 KDNL-30 MO WMBD 31 WEEK-25 WRAU-19 IL.
- Sep 7: tropo t/in 0830 WICS 20 WEEK-25 IL WDXR-29 KY (now off air) KDNL-30 MO  
WLKY-32 KY (750 mi) WIII-38 IN K18AA KS WLFI 18 IN WRAU-19 IL KCBJ-17 KPOB-15 MO KIDZ 24  
KVUE 24 KTVV 36 TX plus many more in & out. 0902 WAPT 16 MS KVRL-26 TX (now KDQC-TV)  
WRET 33 LA WENT 25 IN WLEX-18 KY WXIX 19 OH (790 mi) WKPT-19 TN (840 mi) WHMB-41  
WFLD-32 IL WMBD-31 MO WCIU 26 IL, 1041 KLA4 14 IA WFIE-14 IN.
- Sep 8: tropo t/in 0723 KDNL-30 KCBJ-17 MO.
- Sep 9: tropo t/in 0715 KDNL-30 MO, possible WDXR-29 KY.
- Sep 18: tropo t/in 0750 KEDT 16 LA KIDZ 24 KVUE 24 KVRL 26 KTVV 36 TX.
- Sep 20: tropo t/in 0800 KIDZ 24 KVUE 24 TX, 1000 KDNL-30 MO.
- Sep 22: tropo t/in 0808 KCBJ-17 MO KIDZ 24 KVUE 24 TX KDNL-30 MO.
- Sep 29: tropo t/in 2100 KCBJ-17 MO.
- Oct 6: tropo t/in 0705 KCBJ-17 KDNL-30 MO, t/in 1950 KDNL-30 MO.
- Oct 7: tropo t/in 0730 KDNL-30 KCBJ-17 MO.
- Oct 11: Es 1113-1118 channel 2 weak, s.e., 2 $\phi$ -offset.
- Oct 12: Es 1930 past 2100, channel 2 weak, s.e., 2 $\phi$ .
- Oct 26: tropo 0845 KCBJ-17 MO weakly.
- Oct 29: tropo t/in 0725 KDNL-30 MO KBIN-32 (strn #64QIA KCBJ-17 MO).
- Oct 30: tropo 0800 WRBT 33 LA WMAU 17 MS KLA4-14 LA WMAH 19 WMAO 23 MS WGNO-26 LA  
MLPB-27 LA WMAA 29 MS, 2100 KBIN 32 KHIN 36 KRIN 32 IA KNCT 46 KTVV 36 KVUE 24 TX  
KCBJ-17 MO.
- Nov 7: tropo t/in 0740 KHTV 39 KTVV 36 KIDZ 24 KVUE 24 TX KHIN 36 IA KHNE-29 NE  
K18AA KS KHEG 14 IA, t/in 2200 KCBJ-17 MO.

Nov 8: tropo t/in 0735 KHNE-29 NE, 0741 KAMU-15 TX KIDZ 24, KVUE 24, KTVV 36 TX KEDT  
 16 LA KVRL/KDOG-26 TX WAPT 16 MS KLAA-14 LA KYNE-26 NE, 0835 WCFT 33 AL and others.  
 Nov 10: tropo t/in 1930 KDNL-30 MO, 2043 WAPT 16 MS KEDT 16 LA KTVV 36 KHTV 39 KNCT  
 46 KVUE 24 KIDZ 24 TX, 2049 KLAA-14 LA WMAV 18 WMAO 23 WMAA 29 MS KHNE-29 NE, 2105 WCFT  
 33 AL WBMG 42 AL (750 mi), 2135 KVRL/KDOG-26 TX, 2150 KCBJ-17 MO.  
 Nov 11: tropo t/in 0635 KHTV 39 KDOG-26 KIDZ 24, KVUE 24 TX, 0756 KUHT 8 TX.  
 Nov 19: Es t/in 1825 ch 2 thru apx 2000—ne, no Ids; t/in 2056 ch 2+ PBS, no Id.  
 Nov 22: Es 1902-1925 XEW-2 DF, again 1951, 2030 briefly.  
 Nov 23: Es 0955 chs 2, 3, WFMY-2 NC WBTW 3 NC WWAY-3 NC, 1855-1858 ch 2 weak, no  
 Id, 2057 apparent Es to Canada, ch 2, no Id.  
 Nov 28: tropo t/in 0725 KIDZ 24 TX.  
 Dec 3: tropo t/in 0725 KIDZ 24 TX; Es t/in 2005 WBRZ 2 LA (540 mi, short),  
 2036 WPBT 2 FL.

Dec 5: Es t/in 1830 ch 2 s.e.  
 Dec 6: Es t/in 1820 ch 2-3 s.e., 1841 to ch 4 s. & s.w. (Mexico) thru 2025.  
 Dec 7: tropo t/in 0643 WAPT 16 WJTV 12 MS, t/in 1110 tropo still in for unusual  
 daytime session, KLAA-14 WRBT 33 LA, 1125 WMAV 14 WMAU 17 WMAA 29 MS KCBJ-17 MO KVFD-21  
 IA KDNL-30 MO WMAV 18 MS, 1137 WMAH 19 WMAO 23 MS, 1200 WLPB-27 LA, 1315 WICD 15 WICS 20  
 IL, 1343 WIIIL 38 IN, 1410 WAND-17 IL, 1445 WEEK-25 WMBD 31 WFLD 32 WRAU-19 IL, 1522 WSNS  
 44 IL WSJV-28 WKJG-33 WNDU 16 WNIT-34, 1613 WCUI 26 IL WHA-21 WI KRIN-32 IA, 1659 KPOB-  
 15 MO, 1718 WFIY-20 WHTV 24, 1730 WBMG-42 WHMB 40 AL, 1820 WHNT-19 AL WAAJ 31 WFIQ 36  
 WYUR 48 WCFT 33, 1834 WHIO-24 OH, 1900 WTVV-47, 1945 WKSO-29 WKMA 35 WKLE 46 WLKY-32  
 WKZT 23 KY, 2014 WYEA-38 GA WLIQ 41 WEIQ 42 WCOV 20 AL. Signals were of moderate strength  
 through day with slow QSB. 2030 WCFT 33 AL WRBT 33 LA WKAB 32.  
 Signals very good through my shut-down at 2200.

Dec 8: tropo 0454 WTCG 17 WHAS-11 WALA-10, 0503 WBIR-10 WAAY-31 AL, 0509 WSPA-7  
 (ch-7 #31)(860 mi) WTVM 9 WQXI 11 WJTV 12 WLOS-13, 0520 WMAZ 13 MS (800 mi) WYEA-38 GA  
 WAFB-9, 0531 KNOE-8 WAPI-13 WHNT-19 AL WISAB WTKO-11 WOVN-15 KLPY-10 0553 WKYT-27 WLEX-18  
 KY KDOG-26 TX, 0602 WYUR-48 WCWB-41 (800 mi) WCOV-20 AL KTVV 36 TX K80CL Waldron AR WLKY-  
 32 KY WICD 15 IL WEHT 25 IN, 0622 WBMG-42 AL WHBQ 13 WMAA 29 WMAO 23 WMAH 19 WMAV 18  
 WMAU 17 WMAW 14 MS, 1639 KIDZ 24 KVUE 24 TX, 0645 WHAE-46 WMLN-30 MO, 0649 WETV 30 WGN0-  
 26 WAPT 16 WCFT 33 WKAB-32, 0702 WJSP-28 WACS-25, 0750 KPOB-15 MO WKMU 21 WKMA 35 KY WFIQ  
 36 AL WLPB 27, 0803 WAIQ 26 WEIQ 42 AL, 0820 WTCL-45 (#649, 679 mi), 0841 KNCT 46.

This stable high-pressure session was similar to the Christmas session in 1971—  
 still going on as this is dropped into mail. 10 new loggings bring total to 649. 73.

Pat Dyer, 5315 Silvertip Drive, San Antonio, Texas 78228 (7 Nov - 7 Dec) (CST)  
 Equipment: 1971 model 9-inch black-and-white Penncrest; Archer V-100  
 TV-FM and 8-bay bow-tie UHF antennas at 20 feet with rotor

7 tr	0825 WAPT 16 Jackson MS	T 525	21 Es 1759 KTVI 2 St. Louis MO	790
	WGNO-26 New Orleans LA	T 510	KMOX-4 St. Louis MO	T 790
	WLPB 27 Baton Rouge LA	T 450	WCIA 3 Champaign IL	935
	WRBT 33 Baton Rouge LA	450	1821 WBBM-2 Chicago IL	1045
	(in past 12)		1829 WRBL-3 Columbus GA	830
	1215 WBRZ 2 Baton Rouge LA	450	WCBD-2 Charleston SC	1120
	1220 WAFB-9 BRougeLA (thru KLRN)	450	WCIV 2 Charleston SC	T1120
	1955 KPLC-7 Lake Charles LA	325	1835 WCSC-5 Charleston SC	T1120
	2045 WRBT 33 Baton Rouge LA	T 450	1842: MUF to 95.1	
	2200 WLPB 27 Baton Rouge LA	T 450	2000 f/out	
	2211 WBRZ 2 Baton Rouge LA	450	22 Es 1835 unId 2 north east (brief)	
8 tr	0100 WAPT 16 Jackson MS	T 525	1930 WESH-2 Daytona Beach FL	T1055
	1759 KETS 2 Little Rock AR	515	2100 unId 3	
	KARK-4 Little Rock AR	T 515	2120 WPBT 2 Miami FL	T1150
	2345 KCBM-11 Lubbock TX	340	2145 f/out	
	KBIM-10 Roswell NM	T 440	23 Es 1010 unIds 2,3	
	KLKB-13 Lubbock TX	T 340	1059 WLV-2 Dayton OH	1075
9 tr	0010 KMCC 28 Lubbock TX	340	1100 WAVE-3 Louisville KY	T 945
	0040 XHX -10 Monterrey NL	T 275	1110 WJR -4 Detroit MI	T1225
	0928 KMID-2 Midland TX	275	1128 WFWO 2 Terre Haute IN	935
16 Es	1340-1405 KTW0-2 Casper WY	T1015	1129 WJBK-2 Detroit MI	1225
19 Es	1843-1950 unIds 2		1310 f/out	
	1859 WBAY-2 Green Bay WI	1190	1335 unIds 2,3	
20 Es	1129 WBAY-2 Green Bay WI	1190	1432 KQTV 2 StJoeMO(soon f/out)	750
	(briefly)		2120 unId 2 north (brief)	



26 Es 1030-1110 unIds 2,3 n.e.	1101 WSAV- 3 Savannah GA	1050
1415 KEYT 3 Santa Barbara CA	1202 WFMY- 2 Greensboro NC	1175
1420 KNXT 2 Los Angeles CA	1225 WSJK- 2 Sneedville TN	1010
1435 f/out	(soon out)	
30 Es 1910-1925 WFBT 2 Miami FL	1500 unIds 2-4 south	
D1 Es 1935-1950 unIds 2,3	1509: MUF to 95.3	
2 Es 1950 WSB - 2 Atlanta GA	1628 TGV - 3 Guatemala City	T1120
1955 WRCB- 3 Chattanooga TN	1700 XHTV 4 Mexico City DF	T 690
1959 WSJK- 2 Sneedville TN	1825 YSR - 2 San Salvador,	1200
2027 WATE- 6 Knoxville TN	YSU - 4 El Salvador	T1200
2053: MUF to 94.9	2000 apx f/out	
2100 WLAC- 5 Nashville TN	6 Es 1625 unIds 2-4 south	
2125 WCCO- 4 Minneapolis MN	1644 TGV - 3 Guatemala City	1120
2129 KTCA- 2 Minneapolis MN	XHTV 4 Mexico City DF	T 690
2145 apx f/out	1713: MUF to 98.6	
5 Es 0935 unId 2 (brief)	1830 unIds 2-5	
1100 unIds 2,3	2025 apx f/out	

It seems there is always some sort of last-minute opening just when it is time to mail off a column report.

The good trop ducting into Arkansas the evening of Nov 8 was very stable, and later spread as far as probably New Mexico.

The Es of Nov 21 was the first to get MUF into the FM band here since Aug 16.

As we move towards the winter peak for Es, the openings have been increasing rather rapidly—particularly with Es on 4 of the first 6 days of the month already, in December.

Hope to have some luck with my "missing" Ch-4's and (mostly needed) 5's with the Geminid shower in about a week. 73, WA5IYX.

Patrick Martin, PO Box 149, Warrenton, Oregon 97146

(28-30 Nov) (PST)

I have recently gotten into TV DX. I've been involved in FM DX for quite some time, but haven't done much in TV. I've lately been trying some 0400 MS, which has been fairly successful.

Receiver: Philco 23-inch black & white console

Antennas: Two high-band yagis stacked (homebrew), Winegard SC650 (FM-Ch.5-6), RCA Tunable Rabbit Ears, plus TV Cable (low & high band)

Boosters: OLD RMS Tunable Preamp (2-6/7-13), Channel Master Preamp (Ch.2-83), Jerrold CATV Booster (Ch.6-FM)

28 MS 0246 KNXT 2 CA (movie)	0354 KBOI- 2 ID (wx station)
0247 KBOI- 2 ID (weather—after s/off, wx station runs AN)	0401 unId 2 (mystery-type movie) (not KNXT—is KTVU AN?)
0251 KNXT 2 CA (same movie, car ads)	0405 KUTV 2 UT? (call on pattern)
0301 unId 2 (color bar—NBC pattern?)	0406 KBOI- 2 ID (wx station)
0407 unId 2 (CBS Morn.Nx—WBHM or WMT?)	0412 unId 2 (used car spot)
0433 WJFK- 2 MI? (call on pattern)	30 MS 0236 unId 2 (color bar pattern—NBC?)
29 MS 0310 KNXT 2 CA (movie)	0239 KBOI- 2 ID (wx station)
0316 KBCI- 2 ID (weather station)	0241 KNXT 2 CA (usual movie)
0321 KNXT 2 CA (movie)	0247 unId 5 (color bar—NBC?)
0326 unId 2 (color bar—NBC?)	0258 KBOI- 2 ID (wx station)
0353 KNXT 2 CA (movie)	0517 unId 2 (Morning News)

That just about does it. Catch you later.... 73's (GUD DX).

Robert J. Williams, 251 6th Ave. East, Twin Falls, Idaho 83301 (1975:Feb-18Jun) (MST;MDTMay)

Equipment: 21" Curtis-Mathes color TV in TV-radio-phonograph combination; Motorola AC-DC solid-state B&W portable; 17-el.outdoor ant.(horiz. polarized); two stacked ch-4 5-el. yagies on rotor; various other antennas; boosters.

F2 tr 2132 KBCI- 2 Boise ID	120 Es 2030 KUSD- 2 Vermill.SD	31 Es 0001 Canada? (ad for Leo's Men's Shop)
2158 KBCI- 2 Boise	22 Es 1931 KTEW 2 Tulsa OK	0013 CBXAT2-2? Alta? (Kane's of Edmonton)
3 tr 2200 KBCI- 2 Boise	tr 2059 KBCI- 2 Boise ID	
2258 KAID- 4 Boise	Es 2152 IMID- 2 Midland TX	
18 Es 2100 KMID- 2 Midland TX	23 Es 1230 KMID- 2 Midland TX	J6 Es 1800 KETS 2 L.Rock AR
19 Es 2130 KNMX- 4 St.LouisMO	1300 KACB 3 S.AngeloTX	8 Es 1922 XHBC- 3? (outer space,"Galaxy"etc)
2230 KTEW 2 Tulsa OK	25 Es 1330 KTEW 2 Tulsa OK	
16 tr 1258 KAID- 4 Boise ID	26 Es 1704 KMID- 2 Midland TX	11 Es 1129 KMID- 2 Midland TX
25 tr 1330 KTEW 7 Boise	1936 unId 2 (BradyBnch	1131 KMID- 2 Midland
2200 KBCI- 2 Boise	27 Es 1430 KTEW 2 Tulsa OK	1257 KDFW- 4 Dallas TX
2200 KBCI- 2 Boise	28 Es 1201 KDIX- 2 DicksonND	1334 KTEW 2 Tulsa OK
22 tr 2200 KTEW 7 Boise	30 For M0833 (CB, no Id)	1404 KLNE- 3? NE?

13 Es 1800 KTCA- 2 St. Paul MN      1611 KMID- 2 Midland TX      1400 KTEW 2 Tulsa OK  
 17 Es 1400 KTEW 2 Tulsa OK      1700 KMID- 2 Midland      1442 ? -2 (record offer)  
 1430 KARD- 3 Wichita KS 18 Es 1312 CKPR- 2 ThndBayOnt      1501 KCKT 2 GrtBend KS  
 1511 KWAB 4 BgSpringTX

Had a really nice Es summer season in '75, with CBWT 6 KDIX-2 WAVE-3 WFRV-5 WSIL-3 as new Es stations for me. Boy, that new Worldwide Test Card Guide is great. '73's.

Jim Pizzi, 300 Park, Orcutt, California 93454 (-to 1 Dec) (PST)

No DX activity to report this time. Es has been nonexistent and no tropo to speak of (Jim, you last report was for late-June DX—nothing seen since then? dps)

Tower system dead in the water—severed rotor cable (perhaps that explains it. dps). I will be re-doing set-up soon. Going on tower will be 10-element FM log at 79 ft (horizontal), 7-ft UHF dish at 75 ft and Channel Master CM-1110 ch 2-13 log at 70 ft. A Channel Master UHF line amp and head-end (CATV type #7352 broad-band UHF) amp will be used. All will have CAC-11 co-ax—possibly .412 for UHF. Will use Alliance C-225 rotor and CDE thrust bearing.

Now using a 10-element ch-2 yagi at 30 ft with CAC-11 co-ax and small Jerrold tube amp. And 10-element FM log (separate from antenna above) vertically mounted at 40 ft with CAC-11 co-ax into tunable Ameco FM pre-amp.

Smaller system includes 10-element ch-4 at 23 ft and 10-el. ch-5 at 15 ft for use during Es openings and MS; CAC-11 co-ax through Jerrold tube amps and Maspro tunable attenuators (-30 db).

TV equipment includes 18-inch Zenith color, 13-inch Panasonic color, 12-inch Panasonic B7W and 8-inch Sony B&W. All sets except Zenith have UHF detent tuners.

FM tuners used are JVC VT-900 digital, JVC-VT-700 and Fisher 500-C (with audio output tubes removed—used as tuner) all into Sony TA-1066 amp. Easy to tune several stations in different directions and just punch them in at ID time. Plus a Grundig TR-5000 and Sony TFM-1000w portables.

Hope to have the new system on the tower soon—will report when completed.

While no DX was noted, I did do a little traveling to check out signals at near-by locations.

Nov 25: Using 8-inch Sony portable TV-960 w/UHF detent (monopole VHF & bowtie UHF antennas) from 10 to 20 miles west of Paso Robles, CA (70 mi north of Orcutt) at elevation of apx 1500 ft above sea level, driving west on State Route 46—good DX, excellent scenery, stations received with best VAFI (all UHF apx 130 miles distance):

KEYT 3 SantaBarbara 5555	KNTV 11 San Jose 1035	KMJ -24 Fresno 3555
KSBY-6 SnLuisObispo 5555	KOOY-12 Santa Maria 5555	KMPH 26 Tulare 5555
KQVII(KGOY-12)(20kHzCGI)	KJTV 17 Bakersfield 3555	KBAK-29 Bakersfield 4555
Morro Bay 4554	KFTV 21 Hanford 3555	KFSN-30 Fresno 2555
KSEW-8 Salinas 4555	KERO-23 Bakersfield 5555	KJEO 47 Fresno 2555

(No sign of KGSC 36 San Jose or KMST 46 Monterey)

Nov 29: Equipment same as above but using 20-element UHF on 10-ft mast, 20 miles west of New Guyama, CA on Richfield oil lease, elevation apx 500 feet ASL:

KEYT 3 SantaBarbara 4555	KTTV 11 Los Angeles 2053	KMPH 26 Tulare 4455
KNBC 4 Los Angeles 1054	KOOY-12 Santa Maria 4555	KCET 28 Los Angeles 3455
KTLA 5 Los Angeles 1054	KCOOP 13 Los Angeles 2053	KBAK-29 B(ghosty-strong)
KSBY-6 SnLuis Obispo 5555	KJTV 17 Bak(ghosty-fair)	KFSN-30 Fre(ghosty-weak)
KABC-7 Los Angeles 3555	KWHY 22 Los Angeles 3455	KMEX 34 Los Angeles 2345
KHJ -9 Los Angeles 4555	KERO-23 B(ghosty-strong)	KLXA 40 Los Angeles 3455
	KMJ -24 Fre(ghosty-weak)	KVST 68 Los Angeles 2355

(No sign of KJEO 47 Fresno or KFTV 21 Hanford)

At this location, Bakersfield U's were received 90° off xmtr heading—reflected off 5845-ft McPherson Peak to the south of me. Fresno U's were received 45° off xmtr heading—reflected off 5104-ft Caliente Mt. to the east of me. Have TV—will travel. Will return.

Don Voegel's address was overlooked from his note in last month's column. If any of you fellows who remember him from the AIPA days (or anyone else) wish to contact him, his address is presently 211 West 1st Avenue, Apartment F; Chico, California 95926.

Best of DX to all in 1976

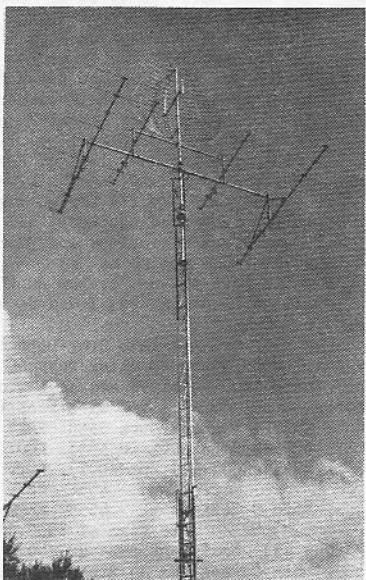
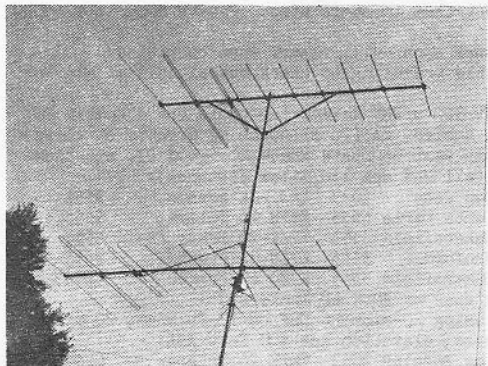
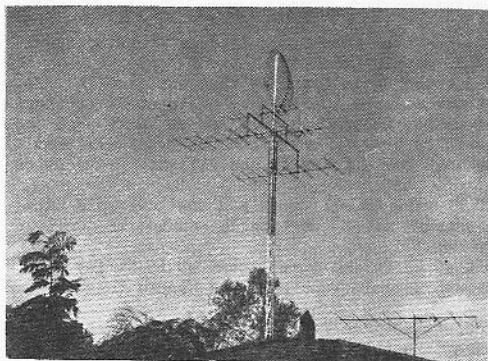
Dennis

# PHOTO-NEWS

Jim Alexander  
Canisius College  
Box 2 - Bosch Hall  
Buffalo NY 14208

January 1976

FEATURE: This month,  
PHOTO-NEWS visits Ron LeBlanc's  
place in Marrero, La. Listings  
appear on the next page.





Photos on the previous page:

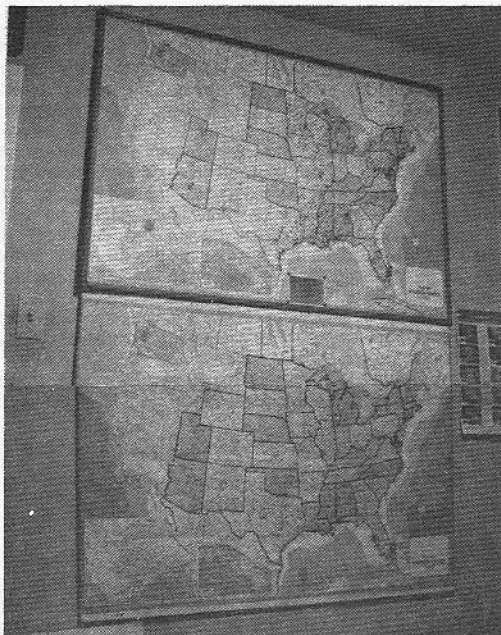
Top left, and also at right --  
50 ft crank up tower; AR-33 rotor;  
Finco 7' UHF dish @ 50 ft; 2  
Winegard high-band yagis (hori-  
zontal) @ 45 ft; 2 Channel Master  
Stereo Probe 9's @ 42 ft (also  
horizontal).

To the left are 2 Winegard  
low band yagis stacked vertically

At the bottom is Ron's DX  
shack: Zenith on left is used  
for highband. Heath color set is  
used for low band and UHF.  
Zenith on the right is used on  
low band with vertical  
antenna

The rest of the shack,  
from left to right: Heath  
10-103 scope; AKAI Deck  
comb. 8 track X-1810 D  
reel to reel. Above deck  
T-45 rotor control box and a  
AR-33 control box. Then,  
Heath AR-1500 stereo rx;  
above the rx Heath 1G-57A  
sweep marker gen. RCA  
rotor control box above.  
On wall above 2 CM high  
band traps. Above the  
Heath GR-295 TV are  
4 CM low band traps  
and BT UHF amp.

Photos on this  
page: At the top,  
Ron's FM map w/TV  
map directly below.  
Below the maps, a  
photo of Ron's photo  
collection.



73 and good DX, Jim

# EASTERN TVDX

Bill Thompson  
1907 Seneca Street  
Buffalo, NY 14210

January 1976

Deadline: 10th

After mid-November, tropo conditions practically everywhere in the East fell back to winter levels for a very simple reason--winter-like weather. At one point, not even normally sunny southern Florida escaped the chill of a strong arctic cold front that swept down the Eastern Seaboard. However, there was also a period in the second part of November when record temperatures for the month were reached at some locations (Philadelphia is an example). The huge temperature variations of November are long gone by now, but there's always the possibility of some good midwinter tropo as you read this. Don't overlook this possibility, because while it may be short-lived, midwinter tropo can be very productive for TV DXers. Also, while the period of best tropo is now over for Northeasterners, it's really only just getting started in the Southeast. Not too many good Geminids meteor scatter results are indicated in the reports of Paul D. Traska and your editor, but the burst rate on the morning of the shower peak was quite good; hopefully, more interesting MS loggings will show up in reports to come. The only real Es activity noted by Eastern DXers since late August has been the November 9th opening (MUF to at least 98.7 MHz), and an opening on December 6th (MUF at least channel 6).

Roger Gravelle 60 Valerie Street St. Thomas, Ontario N5R 1A8 (EDT/EST)  
May  
18 Tr 2100 CITY-79 Toronto Ont (130) 8 Tr 2200 WMPV-15 Madison WI 5555R  
2300 W26AA-26 Jamestown (100) 2130 WOEF-16 Kettering OH 5555R  
W46AB-46 Dunkirk NY (85) 2230 WTVO-17 Rockford IL 5555R  
12 2359 CELFT-25 Toronto Ont 5555N  
June 14 2130 WOUC-44 Cambridge OH (180)  
20 Tr 0700 unID 38 or 39 "WTRF-7" 15 2245 WMSH-46 South Bend IN 5555N  
Wheeling WV--unknown mystery--  
WTRF too weak to overload here"  
September  
July 2 Tr 2330 WNIT-34 South Bend IN (320)  
31 Tr 2200 WTAF-29 Philadelphia PA 4 GW ---- WGPR-62 Detroit MI (120)  
August 17 Tr 2300 WBAO-49 Akron OH (120)  
7 Tr ---- CKGN22-22 Uxbridge (170) October  
8 2200 WCAE-50 St John IN (350) 1 GW 1700 CKCO3-42 Oil Springs (45)  
Equipment includes 5' Delhi parabolic UHF dish, 72 foot tower, Delhi pre-amp, Electrohome 26" TV. "Tuner on TV is very poor on UHF. WKBF Kaiser channel 61 Cleveland passed on 4-24-75--to our sadness. Per Mr. Bennett, manager of station: 'Cleveland market too small to support 5 stations in area!'" (Good to hear from you again Roger; wish you'd report often -bt)

Mark L. Lewis 80 Cherry Hill Circle Apt. 1008 London, Ontario N6H 2M2,  
relates that he was in on the super ducting of November 4th-5th:  
"I caught KMEG-14 Sioux City, KINE-19 Norfolk, Nebraska during that phenomenal duct! Many surprises in that one."

David J. Egan 92 Joron Valleyfield, Quebec  
"I haven't DXed in so long...it would happen that as soon as I got a 7 foot dish at 68 feet I wouldn't have the time to use it...I have very little spare time to DX or write anyone. Plans are to dismantle the tower in late winter if my enthusiasm and time remains at its present level. I can't afford to go out and buy an amplifier to go with the dish which I wouldn't have the time to use anyway, so I guess I'll try to find a buyer for the system come spring. I intend to drop out of WTFDA after 6 years because I am not contributing and am losing interest in 3-4 page DX Scoreboard columns, etc. TV GUIDE has changed completely in this region, as of November 22. I wrote to the head office in Toronto complaining about the lack of inclusion of CIVM-17 and other stations including CHOV-5 Pembroke and CKTM-13 Trois Rivieres. I got an answer from them saying they had investigated the Mtl-St Lawrence edition and changes would be made. I don't know if my letter is responsible for all the changes, but you wouldn't believe the difference in the TV GUIDE in this region. CICO-24 Ottawa went on the air awhile back (relaying CICA-19) and is included in TVG along with CHOV-5, CKTM-13 & CIVM-17. WRGB-6 was dropped effective with the Nov 22 edition. All the channel indicators are different, too."

Ken Simon 528 Pilgrim Road West Palm Beach, Florida 33405 (EST)

November 12 Tr 0445 unID-10 "3/4 CB 7-2 1/2s; WLCY?" 16 Tr 0800 WBBH-20, WSWB-35, WXLT-40, WTOG-44; 0830 WEVU-26 FL  
 "Had some cold snaps here and would you believe it went to 45! Oh well, it's in the 70-80's today (12-1)...working 5a.m.-1p.m. cuts out most MS..."

Steve West 432 Kenmore Road Havertown, Pennsylvania 19083 215/449-1472

May (EDT) 21 Es 1100 WBAY-2 Green Bay WI  
 27 Es 2200 WCBI-4 Columbus MS 30 Tr 0800 WWSB-12 Richmond VA  
 WOI-5 Ames IA WITN-7 Washington NC  
 2230 KMOX-4 St Louis MO 31 0700 WSYE-18 Elmira NY  
 2300 WBBF-4 Rock Island IL 0730 WENY-36 Elmira NY  
 2330 WMT-2 Cedar Rapids IA 0800 WICZ-40 Binghamton NY  
 28 1100 WERZ-2 Baton Rouge LA WSKG-46 Binghamton NY  
 WWL-4 New Orleans LA  
 1600 WDIQ-2 Dozier AL

June 1 Tr 0700 WITN-7 Washington NC  
 7 Es 1600 unID-2 "NBC Baseball" 13 2100 WJNL-19 Johnstown PA  
 8 1035 KTVI-2 St Louis MO W62AA-62 New York NY  
 12 1200 "skip in very (WNJU-47 translator)  
 to weak the  
 1800 whole afternoon"

14 Tr 0700 WHNB-30 New Britain (140) 21 0900 WCDC-19 Adams MA  
 New York City xlters (100) 1500 WSMW-27 Worcester MA  
 Es 1400 WPBT-2 Miami FL WBDH-24 Hartford CT  
 Cuba-2 WLVI-56 Boston MA  
 15 1100 WPBT-2 Miami FL 30 2130 WBTB-68 Newark NJ  
 Cuba-2  
 WWL-4 New Orleans LA

16 1100 WPBT-2 Miami FL  
 Cuba-2  
 WWL-4 New Orleans LA  
 "almost exactly like 6-15, I've heard of reruns on TV before, jeepers!"

17 0715 WDAF-4 Kansas City MO  
 KTEW-2 Tulsa OK

18 0700 WKY-4 Oklahoma City OK  
 0730 KTEW-2 Tulsa OK  
 WDAF-4 Kansas City MO  
 0800 KHAS-5 Hastings NE

19 1100 WTHS-2 Miami FL  
 20 1100 WMAB-2 State College MS  
 1130 WNGE-2 Nashville TN  
 KJAC-4 Port Arthur TX

21 0900 WPBT-2 Miami FL  
 1300 WMT-2 Cedar Rapids IA  
 2000 KFSM-5 Fort Smith AR

30 2000 WPBT-2 Miami FL  
 WESH-2 Daytona Beach FL  
 Cuba-2

July 20 Es 1600 "Got call from local 2-meter ham & semi-retired TV-DXer. He said to turn on the TV; I took my time until he said he was talking to Oklahoma on 2-meters, & had Es on ch 7. I turned to ch 7 and had CCI, weak though; WMAL-7 Washington DC was coming in & fought it until it was out. No IDs, but kept my eye on ch 7 & FM DXed rest of opening. Low band TV was just CCI and squeals."

August 1 Tr 0700 WITN-7 Washington NC  
 13 2100 WJNL-19 Johnstown PA  
 W62AA-62 New York NY  
 (WNJU-47 translator)

September 8 Tr 2100 W41AB-41 Madison County VA  
 (WVPT-51 translator)  
 21 0900 WCDC-19 Adams MA  
 1500 WSMW-27 Worcester MA  
 WBDH-24 Hartford CT  
 WLVI-56 Boston MA  
 30 2130 WBTB-68 Newark NJ

October (EST as of 26th) 1 Tr 0830 WUNK-25 Greenville NC  
 WJPM-33 Florence SC T  
 WBDH-24 Hartford CT  
 6 1000 WHRO-15 Hampton VA  
 W75AP-75 Oak Grove VA  
 (WCVW-57 xltr; 155 miles)  
 W79AX-79 Heathsville VA  
 (WCVB-23 xltr; 165 miles)  
 W81AL-81 Heathsville VA  
 (WCVW-57 xltr; 165 miles)  
 27 1930 WBDH-24 Hartford CT  
 WTVU-59 West Haven CT  
 2000 WLVI-56 Boston MA  
 WEDY-65 New Haven CT  
 2030 WSBK-38 Boston MA  
 WGBY-57 Springfield MA  
 2100 WSMW-27 Worcester MA  
 28 1130 WYTV-33 Youngstown OH  
 WVIZ-25 Cleveland OH

November 3 Tr 0800 WCVW-57 Richmond VA  
 Heathsville VA xlters  
 Cobbs Creek VA xlters  
 6 0800 WCVW-57 Richmond VA  
 Cobbs Creek VA xlters  
 2100 WSBK-38 Boston MA  
 WLVI-56 Boston MA  
 WHNB-30 New Britain CT  
 W62AA-62 New York NY  
 (WNJU-47 translator)  
 17 1140 WNYC-31 New York City  
 2300 WUNK-25 Greenville NC  
 W74AV-74 Cobbs Creek VA  
 (WCVB-23 translator)  
 WYAH-27 Portsmouth VA  
 29 2300 WCTI-12 New Bern NC  
 WITN-7 Washington NC  
 1045 WCDC-19 Adams MA



Jim Alexander Canisius College Box 2 - Bosch Hall Buffalo, NY 14208 (EST)

<u>November</u>				19 Tr 1600	CKGN1-22 Cottam Ont
16 Tr 2335	WBRE-28	Wilkes Barre PA			"CGI on WJET-24 Erie from WDHO-24 Toledo"
	WVIA-44	Scranton PA			
17 0010	WBRE-16	Scranton PA		2200	WEYI-25 Saginaw MI
0015	WSYE-18	Elmira NY	20	0000	CKGN29-29 Oil Springs Ont
	WENY-36	Elmira NY			

"Since putting the antennas on the roof (at about 80' above ground) reception has improved vastly. WUAB-43 frequently in w/a frame bar; Youngstown U's also frequent w/scatterly signals. Saginaw/Bay City U's (255) put at least CGI on semilocals much more often than expected. As for performance when cx are really up, Iowa snowfree on UHF for hours last Nov. 4 was incredible—unlike anything I've ever been in on before. Many thanks to Bill Thompson for all the help and advice on getting set up for DX here."

Paul D. Traska 64 Weaver Avenue Buffalo, New York 14206 (EST)

<u>November</u>				29 Tr 1300	WKBS-48 Philadelphia PA R
15 Tr 0530	CHNB-4	North Bay Ont	R	<u>December</u>	
MS 0620	WJXT-4	Jacksonville FL	R	1 Tr 2035	"CGI on ch 22"
0625	WKTV-2	Utica NY	R	2036	WDCA-20 Washington DC R
0630	WLWC-4	Columbus OH	R	6 Es 1630	unID-3 "PBS network"
16 Tr 0610	WHEM-5	Bay City MI	R	1735	unID-6 "Spanish S.W."
0615	"CGI on chs 11 & 13"				unID-3 "MBC, CBS or ABC S.W."
MS 0625	WJXT-4	Jacksonville FL	R	1751	WEAR-3 Pensacola FL R
Tr 0630	"CGI on ch 7"			Tr 1845	WPSX-3 Clearfield PA R
0631	WLWC-4	Columbus OH	R	8 1945	WPSX-3 Clearfield PA R
0645	WOFTV-8	Grand Rapids MI	R	2030	WKYC-3, WEWS-5, WJW-8 OH
	WVRT-12	Flint MI	R	9 0006	WJAN-17 Canton OH R
1657	CKSO-5	Sudbury Ont	R		WHIZ-18 Zanesville OH R
	CKSO3-11	Kearns Ont	R	0215	unID-4 "S.W. after WHEM off"
25 0030	WKBS-48	Philadelphia PA R	13 MS 0450		to 0644 many unIDs 2-5
	W63AB-63	Mansfield PA R			

"I left out many MS relogs of WLWC-4, WJXT-4, WSB-2, WCBS-2; seen too many times. The meteor scatter so far seems to be a flop. On 12-13, approximately 0630 it looked as if it was getting better, but this may have been my imagination! '73's

Bill Thompson 1907 Seneca Street Buffalo, New York 14210 (EST)

<u>November</u>				19 Tr 2230	WBGU-57 Lima OH (300)
11 Tr 2130	cx up to west; CKCO3-42		20	0047	WEYI-25 Saginaw MI (255)
	noted w/super signals, CGI on		23	1830	Detroit U's fair
	19 & 25 (from Saginaw area)		24 MS 0344	WTVY-4	Dothan AL
16 1530	tune in; big opening to		29 0622	KMOX-4	St Louis MO
	north in progress. Hwy CGI on		0627	WJXT-4	Jacksonville FL
	locals 2, 4 & 7; unIDs 11 & 12		30 An 0143	unID 2-5,	soon gone
	1600 CKSO-5 Sudbury Ont (240)		<u>December</u>		
	(video thru CBLT-5)		1 Tr 2030	WAPB-22	Annapolis MD T
	CKWC-9 Sudbury Ont (240)			WDCA-20	Washington (285)
	(video over CFTO-9)			WWPB-31	Hagerstown (225)
	CKNY-10 North Bay Ont T		3 MS 0207	WCIV-4	Charleston SC
1730	CKCO3-42 Ont, WEYI-25 MI		0610	WLWD-2	Dayton OH (345)
	both excellent		4 0609	WTVN-6	Columbus OH (290)
2200	CICO-24 & CJOH-13 Ottawa		6 Es 1830	unIDs 2 & 3;	hvy $\phi$ on 2
2230	WBTX-33 Burlington (315)		1859	WKRG-5	Mobile AL? T
2243	hvy $\phi$ on CKGN22; WBZF-22?		1928		skip still on 2, but weak
2335	Scranton U's above normal		7 MS 0225	KTVI-2	St Louis MO (675)
17 0030	WPHL-17 Philadelphia (270)		9 0601	WLWD-2	Dayton OH (345)
19 2230	Detroit U's weak-fair				plus many unID bursts this a.m.

Have noted many unidentified bursts and pings from the Geminids meteor shower, but from my point of view, it's a bit down from last year. The morning of the shower peak produced lots of bursts, but they were mostly weak. One big headache (besides the locals) here has been the strength of morning scatter-level signals from stations such as KDKA-2, WKYC-3, WTAE-4, and to a lesser extent WJBK-2, CKCO2-2, and CKVR-3. I suppose that a low-mounted lowband yagi would help the situation; it certainly should reduce troposcatter from the above stations. There was plenty of Es activity on 12-6, and I hope it was a preview of a good January midwinter peak.

# CENTRAL TV-DX

William J. Draeb  
Ellis St. R.R.#2  
Kewaunee, Wi.  
54216

Deadline: 12th

A rather dull month for dx again. The best day for tropo seemed to be the 5th of Dec. when an opening into Nebraska and Kansas broke the boredom.

Frank Wheeler: 6589 Wattsburg Rd., Erie, Pa, 16509 EST

Dxing equipment includes: 1968 Zenith(color) 21" TV. Antenna: Archer VU-160 with Servo-Rotator.

11-5 Tr 0000	WGNW-14 Mi. 3345(262)	11-5 Tr 1030	WUHQ-23 Ct. 3345(103)
	0930 WKBD-50 Mi. " (154)		1200 WUHQ-41 Mi. " (267)
	1000 WLYI-25 Mi. " (220)		1130 WUCM-19 Mi. " (220)
			1700 CKCO-42 Ont. 4445(105)

Don Ruland: 4448 68th Place, Kenosha, Wi, 53140 CST

11-16 Tr 0830	CKCO-3-42 Oil Springs(290)	12-7 Tr WVIZ-25	Cleveland(330)@1300	
11-23 Es 0905	WESH-2 Daytona Beach(1020)	1800	WKYT-27 Lexington(360)	
12-5 Tr 0650	KEYC-12 Daytona(330)	1810	WKLE-46 " "	
	0653 KCNA-8 Albion(520)		WTVQ-62 " "	
	0700 KOLN-10 Lincoln(460)		WKON-52 Owenton(330)	
	KGIN-11 Grand Island(550)		WPBO-42 Portsmouth(370)	
	0703 KHNL-29 Hastings(560)		WKMR-38 Morehead(380)	
	0715 KHGI-13 Kearney(590)	1930	WCET-48 Cincinnati(300)	
	0745 KHIN-36 Red Oak(400)		WSVN-47 Norton(480)	
	KBIN-32 Council Bluffs(420)	2000	WQUB-20 Athens(380)	
	(KBIN-32 20Kc to KRIN-32--		WXIX-19 Cincinnati(300)	
	both running full CB--but	12-8 Tr 0500	WXIX-19 " "	
	with different tones--KBIN-		WHAS-11 Louisville(330)	
	32 same tone as KHIN-36)		0530	WLKY-32 " "
12-6 Tr 1630	KDNL-30 St.Louis(300)		0535	WLEX-18 Lexington(360)
12-7 Tr 0800	KMTC-27 Springfield(470)		0600	WKYT-27 " "
	0845 KEMA-41 Kansas City(430)			WTVQ-62 " "
	1230 KCBJ-17 Columbia(340)		0638	WCET-48 Cincinnati(300)
	KDNL-30 St. Louis(300)		0703	WOSU-34 Columbus(320)
	1300 WUAB-43 Lorain(310)			WPBO-42 Portsmouth(370)

"Unusual year--so far November & December have been better for tropo than September & October."

Marvin Shults: R.R.#1, Toulon, Il, 61483 CST

11-14 Ms 0435	KYW-3 Philadelphia, Pa.	11-19 Ms	WCVE-5 Boston, Ma. T @ 0145
	0457 WPAR-3 Norfolk, Va.	11-21 Es	XEFE-2 Nuevo Laredo @ 1930
Tr 2130	WKAR-23 Lansing, Mi.		XEFE-3 Monterrey; Pink Panther
	WKBD-50 Detroit, Mi.		cartoons @ 1930
	WTVS-56 " "	Es	2000 Ls drop out.
	WGDU-29 Traverse City	12-5 Tr	0813 WAEO-12 Rhineland
	WHMB-40 Indianapolis		0829 WEAO-13 Eau Claire
11-15 Ms 0458	WCBS-2 New York, N.Y.	12-7 Tr	2000 WKBD-50 Detroit
	0500 WTVR-6 Richmond, Va.		WTVS-56 " "
	0532 WTEV-6 New Bedford, Ma.		WCP R-62 " "
	(R.I.) 1st time on Ms.		2130 KBMA-41 Kansas City@4554
11-16 Tr 0545	KSD-5 St. Louis, Mo.		2200 KCPT-19 " "
	0615 KMOX-4 " "		Phone no. on screen;
	all nite movie ends;		816-254-3800
	then i.d. slide.		2205 WTVQ-62 Lexington, Ky.
11-17 Ms 0442	WPAR-3 Norfolk, Va.		2230 W68AA(WAND-17) Danville
	0443 KYW-3 Philadelphia		
	0526 Unid-2 with a rooster.		

"Leonids meteor shower was less productive this year than last year. On Nov. 15, I received my first clear burst of WTEV-6 with alternating black or dark and white spokes with WTEV in upper left and "6" in upper right. This is one station that several years ago I thought I would never receive. This year I have received WFLV by Ls and now Ms. Patience and a little technology have finally paid off.(That's what it takes--wd) I've been busy erecting new tower and may have missed openings as I have been operating with hand-rotatable antennas."

CENTRAL TV-DX

Jan. 1926

Paul Gaines; 15920 Puritan St., Detroit, Mi. 48227 EST

11-13 Ms 0238	Unided ch.4; W.	11-28 Tr 2201	WFLD-32	Il. 1522(225)
11-15 Tr 0001	WLWI-13 In. 3542(230)	2205	WSNS-44	Il. 1022( " )
0015	WFLD-32 Il. 2533(225)	2216	WFLI-18	In. " (220)
0020	WSNS-44 Il. 1023( " )	11-29 Tr 0755	WTAP-15	Oh. 2542(235)
0040	WICD-15 Il. 2532(305)	0815	WOUB-20	Oh. 1522(225)
0104	WFLI-18 In. 1023(220)	0825	WPGH-53	Pa. 1022(210)
0132	WLKY-32 Ky. 3534(310)	0915	WOUC-44	Oh. 1522(180)
0147	WXIX-19 Oh. 1342(240)		WLWC-4, CKCO-13, WENS-10	
0220	WRTV-6 In. 3543(230)		WANE-15, WKJG-33, Youngs-	
0329	WHIO-7 Oh. 2522(190)		town U's, WNEO-45, WAKR	
0724	WKEF-22 Oh. 1522( " )		-23, WHIZ-18, S. Bend(16, 28)	
0441	WLWD-2 Oh. 1022( " )		Erie(24, 35), 12, CPFL-10	
0332	CHCH-11 Ont. 1022(170)		Paris-6, WJAN-17, WOSU-34.	
0347	WITI-6 Wi. " (250)	12-5 Ms 0216	Unided-4; WSW.	
0724	Ft. Wayne U's, S. Bend	12-6 Tr 0926	CFTO-9 Ont. 1532(205)	
	U's(16, 22, 28), WWTW-9,	12-7 Tr 0350	WLWD-2 Oh. 1022(190)	
	WTAE-4, WLWC-4	0905	WICD-15 Il. 1032(305)	
11-18 Tr 0827	W39AA In. 1022(130)	0948	WILL-12 Il. 1521( " )	
0815	WFLI-18 In. " (220)	0954	WFLD-32 Il. 1522(225)	
11-19 Tr 0744	WPBO-42 Oh. " (255)	12-8 Tr 0231	WTTI-6 Wi. 1022(250)	
0834	W4GAB N.Y. " (180)		Log total: 228	

(Paul also sends along several newspaper articles. One deals with ch.31 in Ann Arbor which will be coming on the air in about 2 years. They will run 2000kw and serve about 80% of the people in Michigan--wd)

William J. Draeb; Ellis St. Rt.#2, Kewaunee, Wi. 54216 (414)-388-2350 CST

11-21 Tr 2102	WMUL-33 Huntington(498)	12-5 Tr 0805	KBMA-41	Kansas City(525)
	Cleveland U's(355)	0823	KCAU-9	Sioux City(463)
	2105 WOSU-34		KETV-7	Omaha(481)
11-23 Tr 1911	WKYT-27 Lexington(473)	0830	WOWT-6	" " T
11-26 Tr 1800	" " " "	12-6 Tr 1900	KMTC-27	Springfield(589)
	WOSU-34		KDNL-32	St. Louis(432)
	Columbus(395)		2021	KBMA-41
11-27 Tr 2145	KMTC-27		Kansas City(525)	
12-3 Tr 1700	WKYT-27		KCBJ-17	Columbia(450)
	Lexington(473)		2048	KVFD-21
	1721		Ft. Dodge(365)	
12-4 Tr 1754	KSNL-30		KTSE-27	Topeka(560)
	St. Louis(432)		2129	KHIN-36
	1815		Red Oak(457)	
	1947	12-7 Tr 0754	KMTC-27	Springfield(589)
	WKYT-27		WLKY-32	Louisville(437)
	Lexington(473)		1144	WDRB-41
12-5 Tr 0555	KBIN-32		" " "	
	Council Bluffs T		0754	KDNL-30
	Lincoln(530)		St. Louis(432)	
	(snow free)		1136	KBMA-41
	1136		Kansas City(525)	
	KGIN-11		1150	WKYT-27
	Grand Island(600)		Lexington(473)	
0600	WHO-13		1224	WUAB-43
	Des Moines(371)		Lorain(340)	
	IHTP-11		1618	WPBO-42
	West(unided)		Portsmouth(461)	
0605	WGEM-10		1618	WNUL-33
	Quincy(373)		Huntington(498)	
0607	KCCI-8		1627	WOSU-34
	Des Moines(371)		Columbus(395)	
0616	KUON-12		1712	KCBJ-17
	Lincoln(530)		Columbia(450)	
	(blank raster until		1712	WTIU-30
	0642; then tp)		Bloomington(376)	
0617	WIBW-13		1800	WKLE-46
	Topeka(560)		Lexington(473)	
0636	KTSE-27		2100	WKSO-29
	" " "		Somerset(538)	
0645	KHGI-13		2100	WKPC-15
	Kearney(640)		Louisville(437)	
	(large black call letters		WKMJ-68	" "
	on white background)		WKTZ-23	Elizabethtown
0654	KCNA-8		" "	(473)
	Albion(560)		WIPB-49	Muncie(319)
0724	KHNE-29		WKON-52	Owenton(437)
	Hastings(617)	12-9 Tr 1822	KMTC-27	Springfield(589)
	KXNE-19	12-10 Tr 1940	WKYT-27	Lexington(473)
	Norfolk(525)	12-12 Tr 2116	" " "	" "
	KMEG-14		WOSU-34	Columbus(395)
	Sioux City(463)			
0739	WDIO-10			
	Duluth(286)			
0751	KHIN-36			
	Red Oak(457)			
	KBIN-32			
	Council Bluffs(476)			
	KSNL-27	12-14 Ms 0630-0730	several unided	
	Sioux City(463)		bursts on ch.7; ant. ssw.	
	KVFD-21		One was of a large "7" which	
	Ft. Dodge(365)		had the call through the id-	
0756	KYNE-26			
	Omaha Tent.			
	KCBJ-17			
	Columbia(450)			

dle of it. Saw three bursts of this one. Another was of a small RTMA tp with call and other info in the corners of the tp. No id's.





# WESTERN FM DX

Steven C. Wiseblood  
707 Loma Way  
Santa Maria CA 93454  
Deadline: 10<sup>th</sup>

Jim Pizzi, 300 Park, Orcutt CA 93454 (Sep. 21-Nov 7) (PST)

9-21	Tr	0305	<u>KWIN</u>	97.7	<u>CA</u>	Lodi	\$EL/C&W, news
10-1	Tr	0058	<u>KPAT</u>	94.5	<u>CA</u>	Gilroy	ID, \$\$\$
10-5	Tr	0133	<u>KNAC</u>	105.5	<u>CA</u>	Long Beach	\$RR
		0140	<u>KSPM</u>	102.5	<u>CA</u>	Woodland	\$RR, PSA-ID
10-8	Tr	1710	<u>KOVA</u>	105.5	<u>CA</u>	Ojai	Bank ad for Ventura
10-9	Tr	1730	<u>KOTE</u>	106.3	<u>CA</u>	Lancaster	\$EL, ID
		1935	<u>KUDE</u>	102.1	<u>CA</u>	Oceanside	\$EL, ID@1945 & 2317
		2118	<u>KAGB</u>	103.9	<u>CA</u>	Inglewood	Soul
		2125	<u>KNAC</u>	105.5	<u>CA</u>	Long Beach	RR
		2126	<u>KAFX</u>	107.9	<u>CA</u>	San Clemente	\$EL
		2128	<u>KUTE</u>	101.9	<u>CA</u>	Glendale	Soul
		2131	<u>KOLA</u>	99.9	<u>CA</u>	San Bernardino	"The Un Sound", \$\$\$
11/7	Tr	2329	<u>KZLN</u>	107.1	<u>CA</u>	Seaside	Soul, ID, NFL Football promo.



Equipment Used: 10V-sl LOG @ 40feet mounted vertically w/Ameco Tuneable Booster.  
JVC VT-900 Digital FM Tuner. Log Totals now at 295.

Fred McCormack, Des Lacs ND 58733 (November) (CST)

11-2	Au	2300	unID	101.9	CBC-FM		
7	Tr	0828	<u>KEYA</u>	88.5	<u>ND</u>	Belcourt	
18	MS	1000	<u>KTYL</u>	100.3	<u>TX</u>	Dallas	ID 95 1090
		1051	<u>CJUM</u>	101.5	<u>MB</u>	Winnipeg	U. of MB. 230

The call for 97.7 Regina is CRFK-FM. KEYA and CJUM are new on the air,



Pat Dyer, 5315 Silvertip Drive, San Antonio TX 78228 (CST) (8 Oct-7 Dec)

10/21	Tr	0950	<u>KLEB</u>	94.5	<u>TX</u>	Lubbock, McR	340	5 Es	1506	<u>XHM?</u>	88.9	<u>DF</u>	Mexico City	690
11/7	Tr	0931	<u>KGAF</u>	94.5	<u>TX</u>	Gainsville, ad	300			<u>XEBS?</u>	89.7	<u>DF</u>	Mexico City	690
		1200	<u>KTRM</u>	95.1	<u>TX</u>	Beaumont, ID	275			<u>XEJP?</u>	93.7	<u>DF</u>	Mexico City	690
21	Es	1835	<u>WSCI?</u>	89.3	<u>SC</u>	Charleston	1120		1509	<u>XHSH</u>	95.3	<u>DF</u>	Mexico City	690
			<u>WEFR?</u>	90.1	<u>SC</u>	Greenville	1010		1810	<u>TGRT-</u>	88.8		Guatamala City	1120
		1843	<u>WPXI?</u>	95.1	<u>SC</u>	Charleston, RR	1120	6 Es	1647	<u>TGRT-</u>	88.8		Guatamala City	1120
12-3	Es	2030	<u>WMEW</u>	88.9	<u>TN</u>	Chattanooga, ID	865		1702	<u>TG++</u>	94.9		Guatamala City	1120
			<u>WDYN?</u>	99.7	<u>TN</u>	Chattanooga, rel.				<u>TG++</u>	98.6		Guatamala City,	1120
		2037	unID	89.5	??	(basketball)				ID as "Radio Mundial"				
		2040	unID	93.7	??	(basketball)			1800	tent. <u>XHM</u>	88.9,	<u>XEDA</u>	90.5	
		2053	<u>WPCH?</u>	94.9	<u>GA</u>	Atlanta, EL	880			<u>XHCM?</u>	88.5	<u>Mor</u>	Cuernavaca	735
			<u>WABE?</u>	90.1	<u>GA</u>	Atlanta, Cl	880		1804	<u>XHSH</u>	95.3	<u>DF</u>	Mexico City,	690
		2104	<u>WRAS</u>	98.5	<u>GA</u>	Atlanta, RR, ID	880			ID as "Radio Amistad"				

There was so little DX in Oct-Nov period that I didn't even submit a report. The Es of Nov. 21 was the first for the FM band since Aug. 16. It is a bit of a fast paced December so far with FM Es in 3 of the last 4 days. The Dec. 3 basketball games were either High School or College, so there would be no easy way to track down the few player names heard. Leonid meteor shower was not particularly good here for FM (or TV). 73, Pat WA5IYX

Steven C. Wiseblood, 707 Loma Way, Santa Maria CA 93454 (16 Nov-14 Dec) (PST)

12-4	Tr	1231	<u>KFMB</u>	100.7	<u>CA</u>	San Diego, "B-100", o/u KHAY-Ventura	230
		1840	<u>KNAI</u>	99.7	<u>CA</u>	San Francisco, "Your News and Information Station"	228
		1841	<u>KIOI</u>	101.3	<u>CA</u>	San Francisco, Rock	228
		1849	<u>KBRG</u>	105.3	<u>CA</u>	San Francisco, Portuguese program	228
		1853	<u>KPRC</u>	106.1	<u>CA</u>	San Francisco, "K-106", Golden Oldies	228
		1900	<u>KWYT</u>	100.7	<u>CA</u>	Salinas, "A Quick look at the news from your Quiet Island"	
		1905	<u>KLRB</u>	101.7	<u>CA</u>	Carmel, very strong w/Rock music.	132

There were 4 reporters this month including ye Editor so I guess it wasn't such a bad period for DX, although Es has been rather low since mid-August. Only Pat Dyer has noted any Es on the FM bands. I have not seen any above channel 2, yet. As far as the Geminid Meteor shower went, results were good on TV with a new Ch. 7 station for me, my first ever Ch. 7 by MS. FM was good also, although bursts were seldom long enough for a full ID from stations. Longest bursts were under 10 seconds on FM, up to a minute on TV caused by overlapping bursts.

73's

Steve



# VHF UTILITY DX

Pat Dyer  
5315 Silvertip Drive  
San Antonio, TX 78228  
Deadline: 10th of month

## JANUARY 1976

Hank Holbrook, 7211 Chestnut St., Chevy Chase, MD 20015 QSLed, GMT

<u>5-4:</u>	0210, KWX 598	155.22	Annapolis, MD (Annap. Gen. Hospital)
<u>6-20:</u>	1625, KKA 720	39.30	Bossier City, LA (Dpt Pub Saf, Trp G; 500 w)
<u>7-10:</u>	0246, KIC 432	37.26	Columbia, TN (law; 150 watts)
<u>2-13:</u>	2032, N459BB	134.0	20 mi s Salisbury, MD (Edward C. Brostek; Cherokee Arrow, 1-engine, 4-seat; 8 watts)
<u>14:</u>	1747, N15704	119.7	20 mi se Bal (Rbt A. Strohmaier; Pip Arrow)
<u>20:</u>	1718, N6150N	119.7	ov Bal-DC Arpt (Amos B. Jones; Beech B23, 1-engine, 4-seat; 1800 feet)
	2212, N10765	119.7	(Hinson Airways, Inc; Cessna 150; 1500 ft)
<u>21:</u>	1506, N5099D	122.8	Bay Bridge Airport, MD (Jeannine A. Phipps; Cessna 182; 1-engine, 4-seat)

Ron Wing, 520 East Central - Apt 111, Wichita, KS 67202 Regency ACT-R 10H/L/U; Realistic PRO-7B; indoor antennas; with some trop

9-7: 0630-0730, WDAF (Kansas City) traffic reporter keying into KFJ's 450.95 repeater, apparently using a different private-line tone though as no one at KFJ noticed it.  
The Wichita Eagle Beacon reported receiving KSW 913, 173.375, Lincoln, NE, the Nebraska Journal Star.

Ken S. Simon, 528 Pilgrim Road, West Palm Beach, FL 33405 Lafayette HA-520 with indoor whip until 11-29, then VHF TV antenna

<u>11-14:</u>	1415, KRZ 469	152.0075	
	1422, KEC 50	162.40	West Palm Beach, FL (NOAA, weather)
	1425, KGB 803	152 f	" (Southern Bell)
	2309, KWO 531	155.370	Lake Clarke Shores (Police)
	2312, KIS 458	155.370	Belle Glade (sheriff; QSL)
	2315, -	155.370	Palm Beach (sheriff)
<u>21:</u>	1712, KQY 301	34.5 f	
<u>22:</u>	0925, -	162	Palm Beach
<u>29:</u>	1506, KIB 482	45.060	West Palm Beach (FL Hiway Patrol)
	1508, KLJ 220	155.565	" (sheriff)
<u>30:</u>	0001, KTX 803	155.280	" (Civil Defense)
	1558, KIC 274	159 f	" (police)
	1603, KIA 608	155.43?	Lake Worth (police)
	1604, ? 743	155.43?	(KJW 743 ? Universal Ambulance)

Solar flux/A-Index for November 1975

1: 72/6; 2: 73/25; 3: 74/40; 4: 77/32; 5: 80/15; 6: 82/12; 7: 82/8  
8: 83/5; 9: 80/18; 10: 80/10; 11: 80/12; 12: 81/9; 13: 81/4; 14: 85/2;  
15: 86/2; 16: 90/6; 17: 91/11; 18: 96/6; 19: 96/8; 20: 93/8; 21: 89/16;  
22: 84/36; 23: 79/7; 24: 77/7; 25: 76/15; 26: 74/12; 27: 73/3;  
28: 72/8; 29: 73/28; 30: 73/27

Av. g.: 81.1

As will be evident from the loggings of Nov 17 on the next page, my rather downbeat comments at the end of the December column were a bit premature. They were written just a matter of hours before that opening was upon us. The US F2 MUF was at or over 35 MHz here for something like 2 hours. Overall, the best display since the Oct 1974 period (when the solar fluxes reached into the 140 range).



Now, my own loggings. Allied A-2586, Hallicrafters SX-62; Hammarlund SP-600JX-10 (with ICM BAX-1 tuned preamp); 30' long-wires at 12', run ne-sw and nw-se; peak F2 MUF's noted daily; bs-backscatter; GMT used; new underlined; all F2 unless noted otherwise

<u>11-11:</u>	1737, KSB 233 (Es)	17:	1842, KCF 313	<u>24:</u>	1735, BBC
	2040, 35.28		1851, KEG 776		2105, 35.28
<u>13:</u>	0403, KFL 943 (Es)		1856, <u>KCJ 825</u>	<u>25:</u>	1825, 32.96
	0540, KME 438 (Es)		KGD 942	<u>27:</u>	0340, KMA 829 Es
<u>14:</u>	1610, 32.07		KGC 524	<u>29:</u>	1515, 32.000
<u>15:</u>	1625, 35.22		1902, KGD 951	<u>30:</u>	1535, 35.58 (bs)
<u>16:</u>	1600, 32.96		1912, KCE 518		1537, 32.000
	1850, <u>KSA 838</u> (Es)		1916, KCA 695	<u>12-1:</u>	0354, KMA 829 Es
	1921, <u>KSA 837</u> (Es)		1925, <u>KCB 979</u>		0404, L Ang Es
<u>17:</u>	1734, low-37 Can ?		1936, <u>KCC 921</u>		0455, KOE 257 Es
	1750, 35-NY		KCD 344	<u>2:</u>	0100, KQD 609 Es
	hi-35 US		KCC 748		1900, 35.62 (bs)
	1757, KRG 767	<u>18:</u>	1855, 35.28		2005, 32.96
	KEE 720	<u>19:</u>	0334, KQC 884 Es	<u>3:</u>	2019, KAG 793 Es
	KGE 831		1725, 32.000		2029, <u>KAE 869</u> Es
	<u>KGC 676</u>	<u>20:</u>	0340, KQD 313 Es		<u>KAF 474</u> Es
	1803, KCE 816	<u>21:</u>	2343, <u>KA 203</u> Es		<u>KSB 229</u> Es
	1815, KCF 596	<u>22:</u>	1920, 33.04 US		2035, <u>KKH 300</u> Es
	1817, KCD 845		1940, 42.30	<u>4:</u>	0145, KIE 953 Es
	KCE 457		2007, OK City (bs)	<u>5:</u>	0302, KAA 893 Es
	1839, 37.33		2040, KKI 445	<u>8:</u>	1757, 30.42

tentative loggings of the 17th also included -

KCC 482	35.22	Concord, NH	-	35.50	New York, NY-mp
KCB 897	35.66	Portland, ME			
-----					
KAA 203	42.06	Kirkwood, MO-sp	KGC 676	33.8-	Hagerstown, MD-f
KAA 893	35.22	St. Louis, MO	KGD 942	33.78	Seaford, DE-f
KAE 869	37.10	Ida Grove, IA-cp	KGD 951	33.78	Wilmington, DE-f
KAF 474	37.10	Grinnell, IA-cp	KGE 831	33.78	Wilmington, DE-cf
KAG 793	42.58	Belmond, IA-p	KIE 953	35.58	Atlanta, GA
KCA 695	33.78	Manchester, NH-f	KKH 300	37.10	Bentonville, AR-cp
KCB 979	33.90	Norwich, CT-f	KKI 445	35.58	Houston, TX
KCC 748	33.94	Windsor, CT-f	KMA 829	35.58	San Diego, CA
KCC 921	33.90	Old Lyme, CT-f	KME 438	35.22	Orange, CA
KCD 344	33.94	Bloomfield, CT-vf	KOE 257	35.22	Phoenix, AZ
KCD 845	33.70	Brewster, MA-f	KQC 884	35.58	Detroit, MI
KCE 457	33.--	Newton, CT-f	KQD 313	35.50	Dayton, OH
KCE 518	33.86	Shelton, CT-f	KQD 609	35.22	Lansing, MI
KCE 816	33.94	Southington, CT-f	KRG 767	33.90	Easton, MD-f
KCF 313	33.66	Andover, MA-f	KSA 837	42.42	Connersville, IN-sp
KCF 596	33.86	Brookfield, CT-cf	KSA 838	42.42	Putnamville, IN-sp
KCJ 825	33.94	Bedminster, NJ-f	KSB 229	42.--	Rock Island, IL-sp
KEE 720	33.78	Millburn, NJ-f	KSB 233	42.62	Elgin, IL-sp
KEG 776	33.82	Edison, NJ-f	-	35.38	Los Angeles, CA-mp
KFL 943	35.58	Las Vegas, NV **	-	35.58	OK City, OK *
KGC 524	33.78	Dover, DE-sf	BBC	30.21	Ascension Isl.-ha

c-county; f-fire; ha-h.f. harmonic; mp-mobile phone; s-state; v-volunteer; rest 35 MHz are tone pagers with A2 ID, except \* voice and \*\* tone message with voice ID

Several of the fire departments above hadn't been logged since the fall of 1972 (fluxes then were as high as the 170's).

It is suspected that KCC 482 may have changed over to a tone format; info from members on this (and other paging stations who have changed format, or moved to hi-band) is requested.

73, Pat

WA5IYX

The series on public service QSL's has spurred quite a bit of interest, with several readers wondering what one of my reception reports looks like. Well, here's the answer!

PUBLIC SERVICE QSL's (Part IV)

The following is a copy of an actual reception report which illustrates the techniques I've previously discussed:

8120 Ripplewood Drive  
Austin, TX 78758  
February 15, 1975

Supervisor  
Police Communications Facility  
Texas Department of Public Safety  
Pierce, TX

Dear Sir:

I am pleased to report reception of KUZ831, 155.37 MHz, at 11:42 p.m. (2342 hours CST) on 13 February 1975.

Traffic monitored was as follows (male dispatcher):

11:42 p.m. -- Called Edna unit 201 or 203:  
no contact  
11:43 -- Called Edna unit 203:  
no contact  
11:44 -- In contact with Webster PD.

Signal quality was as follows: 1) Signal Strength-excellent; 2) Interference - slight; 3) Noise - none; 4) Fading - none; and 5) Overall Quality - excellent.

If this report is correct, I would appreciate your completing the enclosed, stamped "Verification of Reception" card, and returning it to me.

Neither this report nor any forthcoming verification violates Section 605 of the 1934 Communications Act concerning communications secrecy. In addition, the verification will not be used for legal or commercial purposes.

My monitor equipment consists of a Realistic "PRO-2" dual-band VHF receiver (26 transistors), and an Antenna Specialists "MON-8" dual-band VHF ground-plane antenna atop a 40-foot mast.

I look forward to hearing from you at your earliest convenience, and thank you, in advance, for your trouble.

Sincerely,

Richard T. Colgan

Enc

Each letter is individually typed since, unlike some DXers, I don't use a prepared form. It's not that I'm against form letters, I just prefer a more personal touch.

POLICE CALL '76

The 1976 editions of POLICE CALL are now available according to the editor and publisher, Gene Hughes. As in previous years, the books will contain frequencies, call signs and locations of all licensed public safety stations in various regions. Bonus features in the 1976 editions are greater details of many major systems and an FCC frequency allocation chart.

Although the books may be available from a local bookstore or electronics dealer, you can order them now from POLICE CALL, Lebanon, NJ 08833. To save you time in ordering, here's a rundown on coverage and prices:

- Volume 1 -- CT, MA, ME, NH, NY, RI, VT
- 2 -- DE, MD, NJ, PA
- 3 -- OH, MI
- 4 -- IL, IN, KY, WI
- 5 -- IA, KS, MN, MO, NE, ND, SD
- 6 -- DC, FL, GA, NC, SC, VA, WV
- 7 -- AZ, CO, ID, MT, NM, NV, UT, WY
- 8 -- AL, AT, LA, MS, OK, TN, TX
- 9 -- CA, OR, WA

The price is \$4.95 for each volume plus postage (\$1.00 per volume for first class or \$0.30 per volume for fourth class). There is also a special offer--all nine volumes by first class mail for \$39.00!!!

Incidentally, Gene also compiles and publishes a Southern California Detail Edition of POLICE CALL, priced the same as the other volumes. If you're interested, drop Gene a line at P.O. Box 35102, Los Angeles, CA 90035.

MORE POLICE CALL

After you've purchased the necessary volume(s) of POLICE CALL, the following guidelines may be used to help you understand your local public safety agency communications system (provided, of course, that they're not already detailed in one of the volumes):

- The department is small, but has two frequencies. See Part II of the volume. If a number of other agencies share one of the channels, you may assume it is a mutual aid frequency.
- The listing does not show a base station, just mobiles. Your department may be receiving dispatch service from the county, state, or a nearby community. Check the frequency in Part II for nearby agencies.
- The listing shows a Local Government channel only. Your police and fire departments may be sharing one frequency.
- One frequency is shown for the base station and another for the mobiles. If the base is a mobile relay or base repeater, you will hear both sides on the frequency. Otherwise, you will need two receivers or a scanning receiver to hear two-way conversations (you will also need a good antenna to receive the mobile units).
- The listing shows many frequencies. Look for the frequency with the largest number of mobiles. If there are base stations on the same frequency, there's no further problem. If you find both VHF and UHF frequencies with a large number of mobiles, place your bets on UHF. When the listings show several mobile channels and different base station frequencies, you are going to have to figure out the "pairing." UHF is easy, because the two are always 5 MHz apart (above 470 MHz, the separation is 3 MHz). On VHF high-band, repeater systems spread the mobiles and base stations by about 3 to 4 MHz. Non-repeater systems will require a trial and error process, and don't forget to check Part II for mutual aid possibilities.

After you've found your local stations, check the listings under the name of your state and county, as many mutual aid systems are licensed on a statewide or areawide basis.

(My thanks to Gene Hughes and the editors of "CB Magazine" for permission to reprint portions of the above--tc.)

So long until March.

73, Perry



# TV

# C.C.I.

[ UNIDENTIFIED-DX ]

Frank Aden, Jr.  
1535 NW Ithaca Ave.  
Bend OR 97701

JANUARY 1976

DX has been awful quiet lately. A little Eskip in November and some MS has been about all for Bend. The same can also be said for TV-CCI as almost nothing has come in. One Id was sent in and a little more information on TV Guide Regional Offices.

Bill Frahm Ided Richard Allen's ch. 4 Aug. 14, station owned by Washington Evening Star as WCIV. WCIV is listed in TV Factbook as being owned by the Washington Evening Star.

The TV Guide Regional Office in Portland Oregon has agreed to send off-sale TV Guides for an self-addressed stamped envelope. They handle the Portland Edition and the Oregon State Edition. I suggest writing for the Oregon State Edition only as it contains the same station listings as the Portland Edition except for KOAP-10. They suggest about 20¢ per book for postage. Their address is 707 SW Washington St., Portland OR 97205.

As listed in the November TV-CCI column which was in December I recently received a copy of the Utah-Idaho TV Guide Edition. This edition was reported to be split into the Idaho Edition and the Salt Lake Edition. Since this has not happened I suggest writing just for the Utah-Idaho Edition until I receive futher information on them.

I would like to thank Ken Simon, Bill Thompson and Bill Draeb for supplying information for the list of TV Stations I use for TV-CCI. Below is a list of stations I still lack information on. Stations with complete information are ones I am not sure are on the air. Any information that can be supplied would be welcome.

Call	channel	state	offset	network
WJWJ	16	SC	?	?
KOZK	21	MO	?	P
WEVU	26	FL	?	I
WATU	26	GA	?	I
WMEG	26	ME	?	P
WLFB	27	LA	?	P
KMXN	27	MM	?	?
WAPB	27	MD	?	P
KHIN	32	IA	?	P
WSWB	35	FL	?	?
KHIN	36	IA	?	P
KICU	43	CA	o	I
WVIA	44	PA	?	P
KPAS	48	CA	-	?
WEAO	49	OH	?	?
WGSP	50	DC	-	I
KAIL	53	CA	o	I
WEDY	55	CT	?	P
KDTV	60	CA	?	S

PROMOS FROM THE UTAH-IDAHO TV GUIDE

**NEWS BEAT**   
Noon Report.

KTVB

Channel **5**  
KSL-TV

**KIFI-TV8**  
DAILY NEWS - PRELIM


**2**  
KBCI-TV

**KWRB**  
**CH 10**

**4 Action News**

6 and 10

KTVX ex KCPX

KUTV Channel 

**WORLD RIVERLAND THEMOPOLIS**

**11KMVT**  
TWIN FALLS

KVI/Boise-Idaho-Caldwell





**WORLDWIDE TV-FM DX ASSOCIATION**

SERVING THE  
VHF-UHF DX  
ENTHUSIAST

DUES: USA and Canada, \$11 (first class); overseas, \$18.

The VHF-UHF Digest is the monthly publication of the Worldwide TV-FM DX Association. WTFDA is a non-profit organization and a member club in the Association of North American Radio Clubs.

All persons contributing their efforts for the Worldwide TV-FM DX Association do so without any monetary compensation. Dues and all other revenue cover printing, postage and other expenses.

The WTFDA is governed by a five-man board of directors.

BOARD MEMBERS: David T. Janowiak  
Bruce F. Elving  
Donald B. Ruland  
Gary A. Olson  
Morrie S. Goldman

VUD EDITOR: Don Ruland  
PUBLISHERS: G. Olson, M. Goldman  
COMPTRROLLER: Gary Olson  
BOOKKEEPER: Bruce Elving  
PROCESSING: Dave Janowiak

-----  
S U P P L I E S and D X L I T E R A T U R E WTFDA member rates only.

VUD Back Issues....	Available: May 1973 issue to the present. Mailed first class or special book rate.	75¢ each 4/\$2.50
<u>FM Atlas and Station Directory</u> .....	An accurate and detailed FM listing by Dr. Bruce F. Elving, FCC FM News column editor. Latest edition now available.	\$2.50 by 3rd Class, \$3.25 by First C
<u>UHF Translator DX Guide</u> .....	A complete listing of US UHF translators. Includes call, location, power, and pri- mary. Also features a section on "DXing the Translators" by Bob Cooper. 28 pages.	\$2.00
<u>TV Station Guide</u> ....	An accurate listing of North and Central American TV stations, featuring maps for each channel pinpointing their locations.	\$4.00; nonmembers, \$5.00.
<u>Beyond Shortwave</u> ....	An introduction to TV, FM, and V-UHF radio DX. Written by Glenn Hauser, Bruce Elving, and Terry Colgan. Illustrated, 31 pages.	\$1.00
WTFDA Stationery....	Features the official WTFDA emblem as at top of this page. Printed in blue on bond.	45 sheets \$1.00
DX Log Sheets.....	Keep your running DX log in order with these sheets, punched for a 3-ring binder.	Pad of 100 \$2.50
<b><u>TIME TO RE-ORDER?</u></b>		
VUD Boxers.....	Attractive cases designed to keep your copies of the VUD neat and organized.	\$1.50 each
Station QSL.....	For requesting QSL's (verifications) from TV or FM stations. Now offset printed.	45 sheets \$1.00
DX Column.....	For reporting to the various DX columns appearing monthly in the VHF-UHF Digest.	Free for a SASE

All columns and feature articles to appear in the VHF-UHF Digest should be sent to editor Don Ruland in Kenosha, Wisconsin, by the 20th of each month. All information for VUD columns should be sent to the appropriate editors; all club business (supply orders, etc.) should be sent to Deerfield, Ill.