

# VHF-UHF DIGEST

the official publication of the Worldwide TV-FM DX Association

MAY 1979

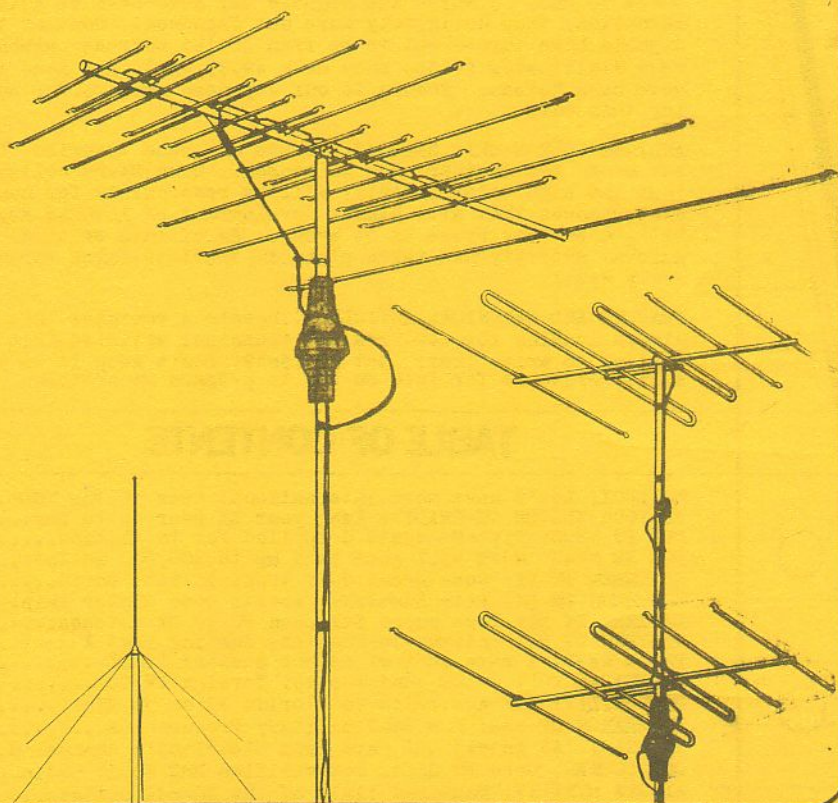
## IN THIS ISSUE:

**F2 on U.S. ch 2!**

**Is your DX gear in top shape?**

**Mini-station map & list**

**More technical Q & A**



# From The Staff :

WTFDA Headquarters, P.O. Box 202, Whiting, Indiana 46394

**CONVENTION '79...**In the center of this month's issue, you'll find the 1979 WTFDA Convention Registration Form. Make your plans now for our convention in Baltimore on August 3rd, 4th, and 5th. We hope to see you there!

**F2 REACHES A2...**Here's a bit of late-breaking DX news. Via the 28.885 MHz VHF Information amateur radio net, we have learned that VHF UTILITY DX editor Pat Dyer (WA5IYX) has just seen F2 skip on U.S. ch 2. For about 40 minutes on April 17, Pat saw signals of South American origin--possibly from Venezuela--with the usual characteristics of F2. The F2 MUF may have peaked at around 58 MHz that day. Pat reports video signals only; the MUF would have to rise solidly to 60 MHz to allow audio on ch 2. This is the first report we have of a North American DXer catching F2 skip on ch 2 during the present sunspot cycle. Nice going, Pat!

**CORRECTION...**In the March issue, we mention that amateur operators on the West Coast of the U.S. have been hearing signs of audio and video signals from Australia, New Zealand, Japan, and Korea. That's not quite correct; Japanese ch 1 is above 90 MHz, so while the signals may have been of Asian origination, they definitely were not Japanese. Some of the signals have turned out to be from Soviet sources, probably from Vladivostok (video buzz near 49.75 MHz), and some may have been Korean. Thanks to our Japanese members for pointing this out!

**ANOTHER POOR E-SKIP SEASON?...**There are some theories that we may be in for another slow Es season. Some DXers believe that the high solar activity will be responsible for many disturbances that will hinder development of intense Es. Let's hope they prove to be wrong. As of this writing, much auroral activity has taken place in the late March through early April.

**FEATURE AND TECHNICAL ARTICLES...**Here's a reminder that we're always looking for features and technical articles from DXers willing to write them. Got an idea? Don't keep it to yourself! Write us for info on how to prepare an article.

## TABLE OF CONTENTS

MAILBOX: Let's have more international news in the VUD!....	3
IS YOUR SYSTEM DX-READY?: Keep your DX gear up to par.....	4
FCC TV NEWS: Five-Megawatt U applied for in Florida.....	5
FCC FM NEWS: WJEM 93.7 goes back up to 500,000 watts!.....	6
SOUTHERN FM DX: Some great Gulf tropo in late March.....	8
NORTHERN FM DX: Pete Sawatzky reports some winter skip.....	10
EASTERN TV DX: More super European F2 TV DX catches.....	11
WESTERN TV DX: Indiana-to-Manitoba ducting last August.....	15
PHOTO NEWS: A rare shot of meteor scatter TV DX.....	17
TECHNICAL TOPICS: On quad stacks; foreign TV CCI.....	18
VHF UTILITY DX: Australia to Florida F2 on 52 MHz!.....	20
IN SEARCH OF PSB: Low Band military frequencies.....	23
MEMORABILIA: An old QSL card from Cleveland's channel 8...	25
QSL CORNER: More FM QSLs, Tom verifies BBC 48.25 audio....	26
ALASKA MINI-TV: Maps and lists of the 40-odd outlets.....	27



# MAILBOX

John Zondlo  
6617 Maryland  
Hammond, IN 46323  
(219) 844-8694  
Deadline: 10th

### New Members:

- |                   |                         |   |
|-------------------|-------------------------|---|
| Tarl Albin        | 4814 Granada Drive      | Valley Station, KY 40272                      |
| John Buehler      | 1716 Heatherdowns Blvd. | Toledo, OH 43614                              |
| Johnny Davis      | 83 Westello             | Pocatello, ID 83201                           |
| Stephen Hullcranz | 303 Devonshire Road     | Washington, IL 61571                          |
| A.H. Wiese        | Erminoldstr. 175        | D-8 Munich 83, WEST GERMANY                   |
| Robin Williams    | "Corn Acres", Dodwell   | Stratford-upon-Avon,<br>Warwickshire, ENGLAND |
|                   |                         | CV37 9ST                                      |
| James Yates       | 8615 Tanglewood Trail   | Chaprin Falls, OH 44022                       |

### Renewals:

Jim Alexander, Robert Baker, Fred Born, Jr., Lynn Burke, John Czarnomski, Clinton Day, Richard Eddie, Eric Fader, William Feidt, Robert Goodman, Roger Cravelle, Michel Guzzi, Harry Hayes, Robert Heckenlively, Hank Holbrook, Guy Kroger, Ron LeBlanc, George McKay, William Ronecker, Bob Seybold, Craig Simons, Lee Vulgamott, William Welch, Robert Williams, Jim and Karen Young.

### Renewals Due in June:

Al Albrecht, Richard Allen, Arthur Amarin, Roy Barstow, John Basehore, Jim Brann, Walt Breville, John Combs, Tim Cronin, Robert Dally, Jr., Gordon Draeseke, Jack Faulkner, Karl Forth, Lawrence Glass, Bill Heusmann, Jim Hopkins, George Jensen, Leonard Jozwiak, Michael Lapinski, Lorne Larson, Rolland Lindblade, Eldon S. Luoma, Andrew Mahoney, David McBride, Carl McCallum, Fred McCormack, Terry Morris, Gordon Nelson, David Olday, John Phillips, John Pilger, R. Randall, Ron Schatz, Kevin Slater, William Smith, Scott Spalding, Steven Sprachman, Tex Stout, Ralph Strobel, Martin Theil, Alphonse Tobia, Mel Wilson, John Winslow, Charles Zipser.

New member EARL ALBIN is an electrician who's into FM and TV DX. He uses a Heathkit AR1515 stereo receiver and a Heathkit GR2001 TV. Earl learned of the club in Bruce Elving's FM Atlas.

From potato country comes JOHNNY DAVIS. He's a TV DXer employed as an electronic technician. Popular Electronics pointed him toward WTFDA.

### Tidbits.....

This section begins on a sad note this month. Fred Nordquist passes word that member Allen Rockford died March 29th after a long illness. He was 35 years old. Allen was an announcer and newscaster for WONO Syracuse NY until 1976, where he handled the station's classical music programming in the morning. He was an authority on old time radio shows, and for many years operated Double-R Radio, a business specializing in tapes and recordings of old time radio shows. All of us at HQ are saddened by his death, and we extend condolences to the family.

We have some interesting comments from new member A.H. WIESE (address above): "I'm a little bit disappointed about the VHF-UHF Digest because in the (sample) issue you sent me I haven't found any news or articles other than things concerning North American DXers. But you are qualifying your association as 'worldwide'. Nevertheless, I'm joining your association and I'm hoping your bulletin will spend more space for the worldwide aspect of our hobby. Perhaps I'll be able to send you some news here from Europe." We love having news on TV-FM DX outside North America! Let's hear from our foreign members this month. Send your reports to International Notes editor Ken Simon, 513 6th Ave. S., Lake Worth, FL 33460.

Member Rick Samford (404 S. McNeill, Burnet, TX 78611) is looking for the following back issues of the VUD: all of 1970, 1971, 1972, 1/73 to 4/73, 6/73 to 11/73, 8/74, 1/76, 5/76, and 7/76 to 12/76. If you have any of these issues and would care to part with them, contact Rick.

Tanio Sugihara (1107-1 Enya-cho, Izumo-shi, Shimane, 693 Japan) has heard great reports of F2 skip in his part of the world. He says Japanese hams on the 6 meter band have worked such countries as Thailand, New Caledonia, Brazil, Argentina, Canada and the United States. Hope some of our members in Japan and on the west coast took advantage of the skip to log some Asian and Australian TV audio.

Interested in TV reception in the 1930's? There's a new book out called 'Television in the Thirties', which features a description of television reception in the United States during the 1930's, with personal accounts by author Raymond Bell. For more info, write University Microfilms International, Box 1346, Ann Arbor, MI 48106. See y'all next month.....73.....jz

# IS YOUR SYSTEM DX-READY?

The Es season is here, and FM, TV, and PSB DX is an everyday possibility. Even if DX conditions are super, the amount of DX that you can catch is directly related to the condition of your DX system. Whether you notice or not, your DX set-up gradually changes--usually very slowly--for the worst.

Everything wears with age, even electronic equipment. Most often, we can't really tell what's happening to it--it's a very subtle process. In fact, unless you have just upgraded your gear or put together a new DX set-up, the DX system you used last season has lost a bit of gain, due to a variety of factors. Fortunately, most of today's receivers are transistorized, and don't go "out of spec" very soon. The big advantage of transistor gear is the very high degree of reliability that we have come to take for granted from solid-state components. Tuners and mast-mounted preamps that are transistorized are not inherently "fail-safe", but can be counted on to maintain optimum performance over much longer periods of time than was ever possible with tubes.

Many DXers still prefer to use tube-type and/or tube-plus-transistor (hybrid) equipment. There are some good reasons for this. Tubes can provide much greater overload protection than transistors, and can be easily operated in certain extreme environmental conditions, such as extreme heat. Also, tube-type equipment lends itself to modification far more easily than modular solid-state gear, as those of us who have been attempting to convert U.S. TV receivers to foreign TV standards have learned. While tubes do have their limited advantages, it should be remembered that they simply cannot provide the very low noise figures possible with the latest solid-state tuners and preamps.

Another insidious process that tends to downgrade our DX gear is mechanical wear, which comes in many forms, such as metal fatigue and strain. In FM receivers, dial cords often break, although some designs have eliminated this problem using gears. In TV receivers, the mechanical turret-type VHF tuner seems to be on the way out, being replaced by random-access keyboard tuning with digital readout (similar to programmable scanners), or pushbutton varactor tuning. Unfortunately, memory fine tuning seems to be on the way out--this is unfortunate for TV DXers.

Veteran DXers always make sure that their DX gear is in top shape; they are aware of the slow downgrading of performance that their systems are subject to. Here's what you can do to make sure your system is operating at peak DX capability:

**TUNERS**--Mechanical wear is a large problem. For TV tuners, the older turret-types need to be cleaned at least once a year, and frequently more often. Both "wafer" and "disk" type TV tuners suffer from an oxidation buildup that causes intermittent snow, especially on weak signals. Tuner cleaner can be obtained in most electronics outlets; it comes in spray cans and is very easy to use. In tube-type sets, the RF amplifier tube must be kept in top shape for peak DX results. The oscillator/mixer stage is also important. In a tube-type TV, there are usually only two tubes to worry about in the tuner--keep both of them in top condition, testing frequently (use a professional type tube tester--capacitance type--not a drugstore model).

**LEAD-IN**--Your transmission line connects your DX antennas with the receivers. It's often the reason that signal levels have degraded. Although some DXers find it hard to accept, T-line, be it high quality coaxial cable or low-cost twin lead, wears out. Twin lead is often subject to mechanical wear when it's allowed to "flap" in the wind, and this holds true for coax sometimes, too. Care should be taken to see that the T-line hasn't cracked, or allowed to take in water. Many DXers have been shocked to see what they've been missing merely by replacing old lead-in!

These are really just two major areas to keep a close check on. You can avoid missing choice DX catches by anticipating the effects that age has on all parts of your DX system. Antenna oxidation is a very real problem--it can change the feedpoint impedance of your antenna. On FM receivers, dial cords should be checked frequently; and on older models, don't overlook regular tube maintenance. The DXer who's properly prepared is the one who "cleans up!" -bt



# TV NEWS

John F. Combs  
2485 Ivan Ct.  
Orlando FL 32807  
(305) 677-0066

May 1979

### CONSTRUCTION PERMITS GRANTED

Homewood AL, Ch. 21, 22, 673  
Mountain View AR, Ch. 6-, 100, 1390 (ETV)  
Salisbury MD, Ch. 47, 2570, 990  
Oklahoma City OK, Ch. 74-, 1343, 1209  
Amarillo TX, Ch. 14+, 113, 812

### APPLICATIONS FOR NEW STATIONS

St. Petersburg FL, Ch. 38, 5000, 1121  
Memphis TN, Ch. 30, 100, 570

### TRANSLATOR APPLICATIONS (Selected)

Marshall MN, Ch. 30 (KSTP-5), 1000-w  
Bowling Green OH, Ch. 27 (WBCU-57), 1000-w

### TRANSLATOR CONSTRUCTION PERMITS (Selected)

Coos Bay, Coquille, and N. Bend OR:

K17AA (KOAF-10), 1000-w  
Lawton OK: K36AB (KETA-13), 1000-w  
Lowry SD: K56AX (KPLO-6), 1000-w

### CHANGES GRANTED IN OPERATING STATIONS

WESH-2 Daytona Beach FL to 1650 AAT (940)  
WCET-48 Cincinnati OH to 2234, 1070, gets  
own tower (formerly shared with WCPO-9)

### CHANGE IN CALL LETTERS

KDLH-3 Duluth MN (ex-KDAL)

LO AND BEHOLD! I was able to obtain a machine with smaller type this time. When one does not own a typewriter, he makes do with whatever he can lay his hands on each month! This may be the shortest column on record as my academic endeavors take much of my time. I haven't had a chance to compile any information sent to me, nor have I been able to scan the past month issues of Broadcasting. I can only hope that I will be able to do so next time!! 73, JOHN..

## STATION BREAK

WTFDA Headquarters  
Post Office Box 202  
Whiting, IN 46394

WTFDA member ads only. 30 word or 3 line limit.

WANTED - VUD Back Issues: June, Nov., Dec. '72; April, Sept., Oct. '73; Jan., Feb., Mar. '77. Please help complete my collection. Write stating price and condition. John Walters, R.D. 3 - Acorn Drive, Vincentown, NJ 08088.

WANTED - Heathkit AJ-15 and/or Sony ST-5130 tuner; good condition. Peter Sawatzky, R.R. #4, Guelph, Ontario, CANADA, N1H 6J1 or call (519)822-7496 (Best between 9 p.m. & 12 midnight).

Your non-commercial ad can appear in the VUD free of charge! Got a piece of DX gear you'd like to sell? Looking for something? Advertise in **STATION BREAK**

## BOB COOPER HOSTING TV SERIES -- BUT DON'T LOOK FOR IT ON YOUR LOCALS

One of the world's most avid and successful TV DXers is now an "international TV star"--sort of. CATJ magazine editor Bob Cooper hosts "Satellite Magazine", a special program aimed at CATV industry audiences at 1200 (Eastern time) on Thursdays, on transponder 24 of the SATCOM II satellite. The program is produced by CATJ in cooperation with the University of Oklahoma, and like CATJ, contains features that are often of interest to TV DXers. For example, one recent segment featured an interview with "notorious" TV bootlegger David Brough, Ontario pirate TV operator (April 1978 VUD, page 27). We also caught a view of some of Bob's DX gear on the show! The program is carried on the same transponder that feeds HBO (Home Box Office) STV service to CATV firms, so if you're an HBO subscriber, you may be able to catch it.

-bt

# FCC FM NEWS

Bruce F. Elving, Ph.D., Editor  
18 1/2 East Fifth Street  
Duluth MN 55805

## New FM Stations Granted

[Radio  
AZ Phoenix KIAI \*89.5 1500; 89 w./Public/  
AR Augusta 97.7 3000 h.v.; 300'  
CA Holtville (near El Centro) 100.1 3000 h.v.;

260', gospel music  
CO Denver \*89.3 58500; 910'; \*Granfallon"  
ID Grangeville 92.7 790 h.v.; 67'; rock  
ID Orofino 95.3 680 h.v.; 750'; m  
IA Des Moines \*89.3 10 "Black Theology"  
IA Harlan 105.5 3000 h.v.; 300'; m  
KS Arkansas City 106.5 100000; 380'  
KS Fort Scott 103.9 3000 h.v.; 300'; rk  
KS Wellington 93.5 3000 h.v.; 165'; m  
MN International Falls 94.3 3000 h.v.; 123'; rk  
NE Terrytown (near Scottsbluff) 103.9 3000;

108 feet above average terrain; gospel music.  
NV Las Vegas \*91.5 15000 45' U of NV  
OR Baker 95.3 3000 h.v.; 200'; m  
OR Gold Hill 100.3 31000; 990'; rock  
OR Riddle, "Tri Cities," and Canyonville K220AB  
\*91.9 \$, cr 10 wats, KSOR \*90.1 Ahland  
OR translator; ABC-FM (not P) affiliated.

SC Orangeburg \*91.9 10 g; "Word of Faith"  
TN Signal Mountain \*91.5 200 h.v.; 950' Chatt.  
Tech.

TX Refugio 106.3 3000 h.v.; 300'  
TX Terrell (not near Terrell Hills) 107.1 3000  
horizontal and vertical; 300'; [k] urban  
AT Courts and Milk River 90.9 720w-CBC, CBR  
MB Winnipeg 103.1 100000, m most likely  
NF St. John's 105.9 45600 CBC-French  
PQ Magog 106.1 1600; rock  
PQ Trois Rivières 102.3 11000  
SA Southend 91.7 425 CBC-CBK relay

**On Air and DX Ready (presumed)**  
CA Palm Springs KP5H-FM \*88.3 10 [10]0'  
CA Red Bluff KSNR 95.9 280 h.v.; r  
CA Sacramento KYDS \*91.5 10  
FL LaBelle WVHG 92.1 3000 h.v.; 300'  
LA New Orleans WBSN-FM \*90.3 10 g; --89.1  
NY Houghton WJSL \*90.3 10  
TX Perryton KEYE-FM 95.9 3000h.v.; 300'

## NonIDs or Slogans

FL Clearwater WQXM 97.9 98-Rock, not  
Rock-98  
FL Miami WAIA 97.3 Stereo 97 and back to  
alternate use of their former nonID: A-1-A.  
FL Mount Dora-Orlando WORJ 107.7 Zeta-7  
FL Naples-Fort Myers WUVU 94.5 Stereo 94  
and Sea-View

FL Titusville WRFM-FM 98.3 FM-98  
FL Winter Haven WPCV 97.5 FM-97  
MA Hayslett WCOD 106.1 FM-106  
OH Toledo WLOT 104.7 FM-104  
ON London CPFL-FM 95.9 FM-96, never  
using legal call letters!  
ON London C8BL 100.5 CBC-Stereo,  
never using legal call letters.

## On air in Stereo

DE Georgetown WSEA 93.5  
FL Vero Beach WAVV 105.5, rock [101-0]  
GA Brunswick WPIO 101.5 r (was k); /  
KS Dodge City K TTL 93.9  
KY Bowling Green WLBJ-FM 96.7 rp (from  
kp); "Natural 97" and "FM 97."  
MD Grasonville WAQA 103.1  
MI Frankfort WBNZ 99.3, m  
OH Xenia WBZI 95.3, r, I-95  
OR Ashland KKIC 101.7, CBS  
OR Medford KBOY-FM 95.3  
PA Saegertown WYSS 94.3, rock  
TX El Paso KLAQ 95.5, rp  
ON London C1XX 106.9 r (not c & talk)

Mexico, Tijuana BCN XETRA-FM \*91.1, rock,  
"91-X-FM."  
NO STEREO, but previously listed as such:  
ON London CBCL 93.5, CBL (AM) Toronto  
relayer.

## Facilities Changes

AL Mobile WABB-FM 97.5 840' (100000hv)  
AK Adak AFR-FM 101.1 height estimated  
by our local reporter at 110' (and based on  
how far he says they get out); h only.  
AK Shemya AFR-FM 101.1 1300 h.v.; est.  
height 200 feet above average terrain.  
CA Fresno KVPK \*89.3 430' (50000hv)  
CO Wray K237AK 95.3 changes from trans-  
lating KXXX-FM 100.3 Colby KS to the  
translating of KFNF 101.1 Oberlin KS,  
\$, k, and Associated Press Audio.

FL Palatka WIYD 99.9 950' (100000 h.v.),  
k (from m); "Y-Country FM," and "Stereo  
100," soon having Jacksonville coverage.  
FL Tallahassee WGLF 104.1 100000 h.v. (440')  
KY Hopkinsville WKOA-FM 100.3 100000  
h.v.; 600 feet above average terrain.

KY Paducah WPAD-FM 96.9 100000h.v.; 330'  
LA Farmerville KWJM 92.7 290' (3000 h.v.)  
ME Presque Isle WMEM \*106.1 98000h.v. (1080')  
MI Grand Rapids WJFM 93.7 back up to their  
formerly authorized full power of 500000  
h.v. (vertical increases from 100 kw); 780';  
with coverage at 53 miles primary, 111  
secondary. Transmitter used to be at  
Plainville MI, but now believed to be closer  
to Grand Rapids.

MO Eidon KLDN 92.7 790 h.v.; 590'  
NM Albuquerque KFMM 107.9 22500 h.v.;  
4130', maximum Class C at 92 km primary  
and 175 km secondary.  
NY Hamilton WRUC \*90.1 1900 h.v.; 150'  
NY Poughkeepsie WVKR \*91.3 1000 h.v.; 85'  
NY Syracuse WMHR 102.9 20000h.v.; 720'  
NC Raleigh WCPE \*89.7 33300 (h); (255')  
ND Minot KIZZ 93.7 90000 (h); (600')  
PA Altoona WVAM-FM 100.1 3000 h.v.; 17';  
"Rock 100."

PA Bellwood WHGM 103.9 has v, says a local  
reporter, but not appearing as v on any  
published list.  
WABellvue KZAM-FM 92.5 100000 h.v. (1100')  
WABellingham KISM 92.9 50000 h.v. (2440');  
adds A (from ABC Contemporary [Y]).  
WYakima KIT-FM 94.5 25000 h.v. (910')  
WI Kenosha WGTD \*91.1 5000 h.v.; 135'  
WI Menomonee WMEQ 92.1 1300 h.v.; 430'  
PR Camuy WCHQ 102.9 50000 h.v.; 58'  
MEXICO, Tijuana BCN XHRM 92.5 50000  
h.v.; 749'

## Call Letters Assigned or Changed

AL Eufaula 92.7 WLAZ (WULA-FM)  
AL Haleyville 92.7 WJBB-FM  
AK Fairbanks 101.1 KAME  
AREI Dorado 99.3 KLBQ (KRIL)  
103.1 KAYZ (KEZU)  
AR Jacksonville 100.3 KEZQ (KGMR-FM)  
AR Little Rock 95.7 KSSN (KXXX)  
AR Pochontas 103.9 KCFM (KPOC-FM)  
CA Healdsburg 92.9 KREO (KJHP)  
CA Oroville 97.7 KEWE (KFAM)  
CA Red Bluff 102.3 KKR8 [FM]  
CA Red Fort Walton Beach 99.3 WFTW (WFTW-  
/GAWrens 96.7 WRNZ ("Wrens") 7)  
ID Idaho Falls 99.1 KQPI-FM ("KUPI-FM)  
ID Alsea 102.3 WRMJ  
IL Springfield \*89.9 WQNA  
IA Fort Dodge \*91.1 KTPR

IA Mason City 98.3 KCMR  
LA Baton Rouge \*89.3 WRKF  
MI Kalkaska 97.7 WKLT  
MI Whitehall 95.3 WTRW (from WLRO), r,  
strict nonID as "rock 95."  
MS Cleveland 92.7 WDAZ (WDLT)  
NE Blair 106.3 KBWH  
NE Kearney 105.9 KQKY  
NE North Platte 94.9 KODY-FM  
NE Omaha 104.5 KESY-FM (KODO-FM)  
NH Rochester 96.7 WNNH-FM  
NM Las Vegas 100.9 KLVF (KFUN-FM)  
NY Buffalo 104.1 WWOR (WWOL-FM),  
k, but still nonID as "Country 104.7"  
NY Oswego 101.7 WWVT (WEBO-FM)  
NY Rochester 100.5 WVOR-FM (WVOR)  
NYS Southampton 95.3 WSBH (WWRJ) rm now.  
OH Conneaut 105.5 WGOJ (WFIZ)  
PA Williamsport \*88.1 WWAS  
SC Columbia 104.7 WNOK-FM (WNOK-FM)  
SC St. George 107.5 WQJZ-FM (WPWR)  
SC Walterboro 100.9 WKYP (WALD-FM)  
TN Lobelville 94.3 WPCT (WTHJ)  
UT Salt Lake City \*90.9 KRCL  
WV Grafton 100.9 WQIT-FM"  
AT Edmonton 100.3 CKXM-FM (CFRN-FM)  
BC Vancouver 99.3 CFXC (CKL-G-FM)  
ON Sarnia 106.3 CBEC, apparently not  
CBEQ, although Broadcasting Yearbook  
'79 says CBEQ.

## Formats/Networks

AK Fort Greely AFR-FM 90.5 m (and Fort  
Greely's located about 125 mi SE of Fair-  
banks near Big Delta and Delta Junction AK)  
AK Shemya AFR-FM 90.5 r, k; \$ (AP Audio),  
height estimated at 200', monaural.  
CA San Diego KITT 105.3 r (Disco). Stereo?  
CA San Francisco K101 101.3 rp, was disco.  
CA Fresno KMJ-FM 97.9 r (from c)  
CO Colorado Springs K103 93.9 rp  
DC Washington WRDX 107.3 r (from rp)  
FL Green Cove Springs WKUE 92.7 rp, 92-K.  
FL Tallahassee WBGW 98.9 r (from m)  
GA Columbus WVOC 102.9 rm, V-103-one  
reporter thinks they may have gone to vertical  
(as well as the usual horizontal) polarization  
because of improved reception of WVOC on  
his car radio, but this station has always been  
only h, and no word from FCC that v has been  
approved for on their part!  
GADouglas WDMG-FM 98.5 mono r simulcast  
of AM.

GA Valdosta WJGA 95.9 r-not m!  
IL Crest Hill WCCO 98.3 m (from r); yet no \$?  
IL Elmwood Park WXFV 105.9 still cjepeg.  
IN Elkhart WXAX 104.7 gm  
KS Haysington KHOK 100.9 r, Stereo.  
KS Hutchinson KHUT 102.9 m  
KS Lyons KLOQ 106.1 r, including translators.  
KS Larned KANS-FM 96.7 k  
KS Salina KYEZ 93.7 r (from m)  
KY Brandenburg WMMG 93.5 r (not k), G-93  
LA New Orleans WEZB 97.1 rs (from m)  
MA Fitchburg WFMP 104.5 mono r (from k)  
"M 104."  
MI Detroit WTRW 92.3 r (from rm)  
WJR-FM 96.3 no NBC any more  
WBF 98.7 no UPI Audio  
MI Fremont WSHN-FM 100.1 r (from kg)  
MI Lapeer WTHM-FM 103.1 k (from rm)  
MI Mount Clemens (not Mount Clemens as  
spelled on my maps, FM Atlas '78) WLBS  
102.7 rs (so-called "Disco.")  
MI Port Huron WSAQ 107.1 km  
NH Nashua WDTW-FM 106.3 r (not k)  
NY Atitka WBTF 101.7 k and sports (not km)  
NC Charlotte WRQO 95.1 r (from rp)  
NC Concord WPEP 97.9 rs ("Disco 98"), Mutual

FCC—FM

NCHickory WXRC 95.7 r (from k). "X-Rock."  
 NC North Wilkesboro WKBC-FM 97.3 r (was mr)  
 NC Statesville W000 96.9 r (was mr), Triple O-97  
 WFMX 105.7 Mutual  
 OH Cleveland WDMT 107.9 rs, now "Disco 108"  
 OH Cleveland Heights WLYT 92.3 rp (one of two  
 stations this month going against the trend and  
 dropping disco); "92-Rock."  
 OH Eaton WJAI 92.9 k (from m)  
 OH Hamilton WOKV 103.5 r  
 OH London WSYX 106.3 mg; still monophonic  
 OH Toledo WMHE 92.5 rs  
 OR Klath Falls KJSN 92.5 m (from r)  
 PA Altoona WFBG-FM 98.1 mc  
 PA Clearfield WCPA-FM 93.5 k (from m), C-93  
 PA Johnstown WJAC-FM 95.5 m (was mc), no M  
 WJNL-FM 96.5 r (was rm), "Music  
 96.5," stereo now.  
 PA Tamaqua WZTA 105.5 Mutual

SC Anderson WAIM-FM 101.1 rp  
 TN Red Bank WSM 94.3 r (from rp); simulcast  
 with WAM.  
 WA Seattle KIXI-FM 95.7 r (from m)  
 WV Martinsburg WESM 97.5 r (from m)  
 WY Laramie K10Z 102.9 C (from M)  
 AT Edmontone CJCA-FM 97.3 p (from k)  
 AT Lethbridge CHEC-FM 100.9 rc (from mc);  
 new owners pledge to change frequency and  
 improve station's coverage.  
 ON North Bay CKAT 93.7 k (from mk)  
 ON Toronto CHFI 98.1 r (from mc)  
 SCA (#67 kHz) Activity  
 FL Clearwater WOKF 95.7 PRM (Q)  
 FL Orlando WDIZ 100.3 m (from g)  
 FL St. Petersburg WQYK 99.5 no SCA  
 WKES\*101.5 X (audible  
 telemetry or teleprinter)

GA Perry WPGA-FM 100.9 no SCA; telemetry/  
 IL De Kalb WNIU \*89.5 talking book and farm  
 IL Urbana WILL FM \*90.9 talking book, farm  
 NY New York WRFM 105.1 XG: Besides usual  
 teleprinter noise has talking g 7:30 to 8:30 Sat.  
 nights for Mormon Church; DXers should check  
 other LDS-owned FM stations, like WCLR 101!  
 Skokie IL to see if they too have occasional g or  
 their SCA channels.  
 OR Ashland KSOR \*90.1 to talk (programs  
 on nursing and telemetry); cr; also on KSOR  
 translators.  
 TN Hendersonville WBQY 92.1 occasional sports  
 and special events (TS).

Abbreviations: c classical, e ethnic, g gospel, k  
 (not C&W) country, m middle of the road (no  
 rock—more like easy-listening music, which  
 differs from the definition of m used by the  
 radio industry), n news (all news), p progressive

rock, r rock oldies, or rock hits, or rock sounds that never made a "hit list," or easy rock, or anything on that order (what the industry loosely calls "contemporary"), s soul, t all talk—talk other than all-news. Disco is rs or sr; "album-oriented rock" is a term that seems to be fading in usage in the industry, but it is generally abbreviated rp or pr. Networks: A American Broadcasting Company FM (frequency modulation) Network, B National Black Network, C Columbia Broadcasting System, CBC Canadian Broadcasting Corporation, E American Broadcasting Company Entertainment Network, I American Broadcasting Company Information Network, M Mutual Broadcasting System, N National Broadcasting Company, P National Public Radio, S Associated Press Audio, U United Press Audio, Y American Broadcasting Company Contemporary Network, Z Mutual Black Network. \$ is stereo, \* is an educational station, and † stands for SCA, "subsidiary communications authorization," usually at 67 kHz removed from the center of an FM radio station carrier. PRN (Q) is Physicians Radio Network, exclusively an SCA creature.

\*\*\*\*\* READERS' REPORTS \*\*\*\*\*

*If you want to DX on a luxury ship forget it, says John Ebeling, who says "Below top deck in a ship—even in Miami where dock was close to many transmitters, band was dead! Didn't think FM would be affected so much in steel ship." Two Chicago-area DXers were nice enough to send the March 4, 1979 Chicago Tribune Magazine with several articles on Chicago FM and AM radio, including a dial excursion on what can be heard on area radio stations some of which, like 107.1 Lowell's WLCL probably take DX-type equipment to bring in to Chicago itself. One article is headlined, "The Rise of FM has driven AM Radio Executives to Despair." I've been sharing the articles with a blind friend who travels to Chicago quite often and is interested in radio there.*

*Greg Monti thinks WQVE 93.5 Mechanicsburg PA is stereo, but until I hear for sure, it'll be listed as mono. He comments on WJFM going back to 500 kw (flip back a page under "facilities"): Wonder how come they didn't lose their grandfather? Those crooks!*

*Randall Clark, who has been traveling in North Carolina, says WDAV Davidson is on 90.5 not 89.9, but WDAV has a construction permit for 89.9, so on 89.9 it will stay as far as my records are concerned! He also sent a clipping that WXIL 95.1 Parkersburg WV is being sued for failure to pay for merchandise.*

*Ken Simon sent an article on the derivation of early FM radio station call letters from p. 134 of the book, American Broadcasting, by Lawrence Lichty and Malachi T. Topping. This excerpt, however, I believe was lifted from Chris Sterling's article on the history of WTMJ-FM Milwaukee, p. 342, Journal of Broadcasting, fall, 1968, as the wording is identical in both accounts. Another of my subscribers to the FM ATLAS puts out the Aircheck Factory News, published in the Chicago area, with news of announcers' fates and fortunes and some format data. From Japan we learn that there is no SCA there, with the Postal Ministry now studying how SCA might be implemented. The commercial stations there, more so than NHK, are interested.*

*Maine's Rod O'Connor supplied the Alaskan FM station updates, as well as drawings of the Shemya and Adak transmitting antennae, which confirm v at Shemya but h only at Adak (Adak's antenna looks like a single section Collins 37-M antenna).*

*From Michigan, Philip Boersma says WKJR-FM Muskegon Heights gets a horrible "birdie" each time it turns on its SCA for transmitter readings (the only thing the SCA is used for). So he gave a copy of the article on SCA that was in the January Audio to WKJR-FM's chief engineer.*

*The interim operation of KEFM 96.1 Omaha is profitable. Some 80% of the profits are to be given to charity under the agreement, which keeps KEFM on the air (along with KOIL—AM) until permanent owners of the facilities are decided by the FCC. In Alaska, a new student-operated 3 kw \$ rock station may be started as an alternative to KUAC \*104.7 Fairbanks. From Ontario, Pete Sawatzky sends word from the University of Guelph that the students there may apply for a low-powered Fm station, on the order of CKWR 98.7 Kitchener and CKMS 94.5 Waterloo.*

**CONTRIBUTORS** last month: Guy Allen, Houston TX; Randall B. Clark, Parkersburg WV; Bill Fait, Lincoln OH; Ted Fleischaker, Louisville KY; one of the owners of KRJB (FM) Monte Rio CA whose signature I cannot make out; Greg Leo, Euelandshire IL; Fred McCormack, Fargo ND; George J. Mileon, Lynn MA; David W. Mitek, Xenia OH; Greg Monti, Bayville NY; Pete Nordgren, KSSB (FM) Bemidji MN; R. J. O'Connor, South Portland ME; Steven Shaffer, Hammond IN; Robert Steadman, Milwaukee WI; Bill Thompson, Buffalo NY; David L. Walcutt, Houston TX; Warren R. Wilson, Valley Forge PA. THIS MONTH: Aircheck Factory News, Franklin Park IL; Leo Boehl, Grand Island NE; P. Boersma, Spring Lake MI; Clark, John F. Combs, Orlando FL; Mike Dorner, Jr., Metairie LA; John Ebeling, Bloomington MN; Robert Fischer, Fairbanks AK; Larry Geller, Tokyo JAPAN; Morrie Goldiman, Chicago IL; Dave Grimm, Akron OH (who can pack more FM station news onto one postcard than you could believe!); Dave Hescall, Fortville IN; Guy A. Kruger, Sioux City IA; J. M. Mangiaracine, Altoona PA; Mike Marzulle, Lynnwood WA; Frank Merrill, Toledo OH; Greg Monti, Bayville NY; Gary Olson, Lake Forest IL; O'Connor; John Parfello, Girard OH; Jim Pizzi, Orcutt CA; John Robertson, Crosswell MI; E. G. Saba, Great Falls VA; Edmund A. Schantz, Germantown MD; Scott Spalding, Ashland OR; Peter V. Taylor, San Francisco CA; Thompson; Charles H. Warriner, McCook NE; Larry Weil, Acton MA; John Zondlo, Hammond IN. To the right: Rod O'Connor's drawing of the AFR-FM Shemya AK vertical and horizontal antennae:

*The Canadian Radio-Television and Telecommunications Commission recently issued a report on broadcasting, 1968-78. Among highlights: "The change of real significance is the audience share attraction from AM to FM stations. The swing to FM is likely to increase as more FM stations come into operation..."*



## GULF TR MAKES A LATE MARCH RETURN

Rick Samford, 404 S. McNeill, Burnet, TX 78611 - March 7 to April 3 CST  
Equip.: Kenwood KR-5400 rx, 10-e1. Archer FM at 24 ft. w/rotor.

<u>3/9</u> tr		<u>3/28</u> tr	
0719 KREP 106.1 LA Monroe, ID	385	0024 WONE 98.5 FL Panama City, "Q-98," ID	
0731 KWEZ 104.1 LA Monroe, "FM-104", ID		0116 WKSJ 94.9 AL Mobile, FSA, ID	610
0735 KHON 102.1 LA Houma, wx, ID	470	0120 WABB 97.5 AL Mobile, wx, "97-Rock"	
0747 KAMN 102.9 LA Crowley, ad	365	0131 WJEZ 94.1 FL Pensacola, ID	665
<u>3/27</u> tr		0159 WJPR 96.1 AL Mobile, ID	
2246 WOKY 100.7 LA Baton Rouge, ID	435	0202 WKRQ 99.9 AL Mobile, ID, later	
2259 WAJB 107.3 FL Pensacola, wx 2/ID		with "G-100 " slogan	
2259 WRBO 104.7 FL Tampa, ID	985	0229 WGTI 103.3 LA Hammond, ID	475
"Q-105 is The Electric FM"		0231 WTKX 101.5 FL Pensacola, ad w/ID,	
2359 WYLD 98.5 LA New Orleans, ID	500	"TK-101"	
"The Midnight Concert on FM-98"		0326 WTKX 106.7 AL Enterprise, ID	745
<u>3/28</u> tr		0401 WTYX 94.7 MS Jackson, ID	500
0022 WRNO 99.5 LA New Orleans, ID,		"94-Ticks"	
"Rock-99"		0659 WBAM 98.9 AL Montgomery, ID	710
0035 WPFM 107.9 FL Panama City, ID	765	<u>3/20</u> tr	
0040 WXFM 102.7 FL Milton, ID, "X-102"	680	2358 KMCO 96.7 TX Mineola, s/off	205
		claiming to be EZ in day & rk in eve.	

After reading the March "FCC FM News" and reviewing my tapes again, I've discovered two errors in my March report. On 1/25 at 1919 I had KMVZ instead of the correct KMVC and on 1/27 at 1917 I had KLAN-Ogden? which turns out to be KZAN in Ogden.

Vernon Eaton, 82 Springhill Acres, Benton, AR 72015 - Jan. 1, 79 to Feb. 23, 79  
Equip.: 5130 Sony tuner w/hor. stacked CM ant. @ 55', CD 44 rotor. 374 stations logged including 13 new loggings and my 99th freq. logged. 501-847-2066

Not much happening down here except the coldest January and first two weeks in February the coldest on record. From 1/18 to 1/14 I deserted my radio because it was too cold. I now find that a beautiful opening w/both Es and Tr in many areas in my part of the country happened 1/25 when there was record breaking cold outside. I learned one thing, check the radio each day. Anything's possible in any weather. (Probably that is true but, let's keep in mind that Es takes place so high up in the atmosphere that it is not directly related or affected by the weather on the earth's surface. DB)

Had some fantastic openings 2/14, 2/20, 2/21 and 2/23. Feb. 20 (pm) and Feb. 21 early (am) was terrific. Got 10 new loggings in three hours. I got sleepy or would of received more. 73-Vernon

<u>1/1</u> (all tr)		<u>1/13</u> (icy)	
0930 WHTZ 93.3 KY Paducah, ID	300	0908 KOBC 90.7 MO Joplin	200
<u>1/4</u>		1300 WMSJ 91.3 KY Murray, ID	370
0200 WVPV 105.5 LA Leesville, ID	250	1318 WVCL 92.1 LA Winfield	220
<u>1/5</u>		1850 KYR 93.3 TX Port Arthur, ID	350
0135 KRAV 96.5 OK Tulsa, \$	200	1854 WCPG 93.3 MS Houston, ID	250
0151 KMRJ 96.9 KS Pittsburg, ID	250	1905 KEEB 94.7 OK Oklahoma City, ID	350
0208 KZEW 97.9 TX Dallas	275	1908 WKXI 94.7 MS Jackson, \$	250
0210 KPLX 99.5 TX Dallas		<u>1/14</u>	
1737 KMOR 107.5 TX Ft. Worth	285	0925 KFJZ 97.1 TX Ft. Worth, \$	285
<u>1/6</u>		0930 KOAX 105.3 TX Dallas, \$	275
0940 WKIV 106.7 MS Vicksburg	200	<u>1/17</u>	
<u>1/10</u>		1730 KUMR 88.5 MO Rolla, \$	250
0122 KKTIX 95.9 TX Kilgore, ID	200	<u>1/18</u>	
<u>1/12</u>		0300 WSM 95.5 TN Nashville, ID, \$	350
1755 KMGC 102.9 TX Dallas, ID, \$		0304 WKIX 97.9 TN Nashville, \$	
1800 KJCS 103.3 TX Nacogdoches, \$	240	0312 WKTA 106.9 TN McKensie, ID, \$	275
2230 KUMR 88.5 MO Rolla, \$	250	0330 WHEC 103.1 MS Columbus, ID	300
2234 KUHF 88.7 TX Houston	380	1315 WZZQ 102.9 MS Jackson, \$	250
2240 KETR 88.9 TX Commerce, \$	220	1726 WKYQ 93.3 KY Paducah, ID, \$	300
2309 KCUR 89.3 MO Kansas City, \$	350	1735 KMBQ 93.7 LA Shreveport, \$	200
2310 KWGS 89.5 OK Tulsa			
<u>1/13</u> (icy)		<u>2/14</u> , first warm spell since early Jan. 55 F	
0855 KERA 90.1 TX Dallas, 275		2300 KATT 100.5 OK Oklahoma City, ID, \$ 300	
		cont.	



2/14 all tr				2/21				
2302 KNGG	92.5	OK	Oklahoma City, \$	300	0015 KHOC	99.9	TX Waco, ID, \$	290
2304 KEBC	94.7	OK	" "	"	1743 KWJS	94.9	TX Arlington, ID	280
2306 KZUE	102.7	OK			1800 KSUC	88.3	TX Keene, ID 1,800w	280
2309 KOPM	104.1				1830 WBEW	88.9	TN Chattanooga, ID	400
2/20 (warm, wet)					1832 WBYN	89.7	TN Chattanooga	400
2240 KOOI	106.5	TX	Jacksonville, \$	250	1912 KMMU	90.7	MO St. Louis	350
2245 WKTA	106.9	TN	McKensie, ID, \$	250	1921 WKMS	91.3	KY Murray	375
2255 KPIX	99.5	TX	Ft. Worth, \$	285	1930 KOSU	91.7	OK Stillwater, ID	270
2300 KCBI	89.3	TX	Dallas, ID, \$, 1500w	275	1940 KQID	93.1	LA Alexandria, ID	260
2315 KKDA	104.5	TX	Dallas, \$		2/23			
2247-2315	many	others	from Dallas-Ft. Worth, \$		1005 KTLO	98.3	AR Mountain Home, ID	150
2316 KGAF	94.5	TX	Gainesville, ID, \$	270	(99th freq. logged, took 18 months to catch, lack only 88.1)			
2325 KIKS	93.3	TX	Killeen, ID, \$	400	1915 KWMR	88.5	MO Rolla	250
2345 KMPA	89.5	TX	Austin, \$, 1320 w	450	1730 WEXU	88.9	KY Richmond, \$	550
2347 KUT	90.7	TX	" " "		1800 WVLK	92.9	KY Lexington, ID	530
2348 KLEJ	93.7	TX			1900 WKMS	91.3	KY Murray, ID, \$	270
2359 KASE	100.7	TX			1907 WKYQ	93.3	KY Paducah, ID, \$	300
2353 KMPM	96.1	TX	San Antonio, \$	550	1915 WKBJ	92.3	TN Milan, ID, \$	250
2355 KISS	99.5	TX	San Antonio, \$		2245 WKIR	104.1	TN Jackson, ID, \$	250
2400 KITE	104.5	TX	" "					

Mike Dalton, 1840 Drew St., Clearwater, FL 33515

After reading through VUD, I must confess a certain envy for those making reports of any DX. The DX here has been virtually nil. The activity here has been a complete zero as far as Es to any area. There has been minor Tr activity to the north which includes certain receptions from Georgia and South Carolina. The South Carolina activity has been mostly weaker than we normally experience. An unusual season to be sure, since we have had no receptions of trans Gulf tropo. This is wierd since we have been accustomed to strong Gulf tropo during the emergence of spring. There has been some reports of Tr activity to the north. Somehow the bending has excluded our area. As you can imagine, the lack of stations has caused great consternation. Overall, 1978 brought in fewer loggings than previous years; the levels for Tr were down also. Since I have been fairly active over the years, it has been a big disappointment that we are having difficulties receiving even relogs. The start of 1979 has been skimpy to say the least. We are hoping that the Es will be "terrific"—if this season turns out like 1978, I'm going back to photography as a hobby! If it weren't for Earl Lyons, who DX's from Belleair Bluffs just a few miles from here, I would swear that there was a breakdown in my antenna system. This brings me to a brief review of my equipment. Our FM receptions are made with an SAE (modified) Mark 8 digital tuner; this tuner has been stabilised for dxing and has high performance options made by my company, Dalton Audio. This tuner is linked to a stacked (vertically) pair of Finco FM-4G antennas mounted at about 25' above ground level. I also have a Revox digital tuner that I purchased over the summer; but so far I haven't had time to modify it. The complement of equipment is rounded out by various recorders. At the present time I am using a Tandberg RD 320 for recording because of its excellent response.

I hope we all have a good year for DXing in '79. We need something to keep up spirits. Perhaps perseverance will pay off for members, but then, again, Mother Nature doesn't bend to our whims. Let's hope our members will have a good year; I for one look forward to some long reports. Best regards, Mike Dalton.

Randall B. Clark, RT5 Dutch Ridge, Parkersburg, WV 26101

My apologies for no contribution for the April-79 VUD column. I usually try to send contributions every month but as you can guess no or little DX of interest to report!

I'm still looking for an address book for most of the FMs in the US and Canada. Got any ideas where I can get a hold of one?? I plan a massive QSLing attempt on most of the FM Es/Tr catches this year, so if you have any info it would be greatly appreciated indeed!! (I think a publication of Broadcaster's Yearbook might help you. Try looking for it in a large library. DB)

Danny Buntin, 1020 S. Duncan, Stillwater, OK 74074

Like the last two reporters, I'm going DXless also, but that's expected in my location. DX here usually doesn't pick up until April or May. If not, then I'll feel exactly like Mike above. Winter, as if by magic, suddenly released its icy grip here in late February and throughout March, temperatures were above normal on almost every day. What a magnificent relief that made. As a result, I was delighted to see some of my fringe stations coming in like locals during some of those nice days.

As I complete my first year as editor of SFM, I would like to express my thanks again to those great members who have contributed to SFM. As a result, SFM has really made a positive turnaround. For many years, SFM just foundered along, seldom experiencing much regular support from reporters and editors alike. Now I doubt if few WFFDERS can remember the column doing so well now. Consider what a mediocre year 1978 was for dxing and it's an even more remarkable feat. Thanks everyone for helping to make it possible. 73.

# NORTHERN FM-DX

Ralph Strobel  
2510 E. McCalliard Rd.  
Muncie, IN 47303  
(317) 288-5815

Deadline: the 10th

May 1979

For FM DXers in Canada, the Northwest-Central states of WA OR ID MT WY ND SD NE MN IA MO and states east of the Mississippi River and north of the Mason-Dixon Line. Send in your DX report for publication.

Only one report received this month from our faithful Canadian.  
Winter E-skip noted below.

Peter Sawatzky - R.R. #4 - Guelph, ON N1H 6J1

Equipment: Pioneer TX-9500 Tuner with Delhi 1047 @70 feet.

Loggings made on the automated setup are indicated with an asterisk.

<u>1978</u>	10/18-19	Es 2300-0800	KERA*	90.1 TX Dallas	1130
		(For loggings of 18-19, 2300 refers to time on the 18th and 0800 is time on the 19th. This applies to all dual dates.)			
	11/7	Tr 1901	WAUS	90.7 MI Berrien Springs	325
	12/3	GW 1100	CJBC-?	99.3 ON London	65
		(I'm not certain what # this repeater of CJBC is-assume London)			
	12/4	Tr 0700-1830	WMBI*	90.1 IL Chicago	375
	12/5	Tr 0500	WBOS*	102.9 WI Milwaukee	365
		0800-2230	WMBI*	90.1 IL Chicago	375
	12/6	Tr 0700-2200	WIAN*	90.1 IN Indianapolis	380
	12/8	Tr 0800-1800	WIAN*	90.1 IN Indianapolis	380
	12/11	MS 0800-1800	WEPR*	90.1 SC Greenville	605
		(Heard: "...WEPR, Greenville...")			
	12/16	GW 1100	CBE	89.9 ON Windsor	165
	12/17	Es 1200-2000	WOKF*	95.7 FL Clearwater	1080
		2007	KOFM	104.1 OK Oklahoma City	1045
<u>1979</u>	1/5	MS 0800-1730	KVNO*	90.7 NE Omaha	815
		(1st time by MS, previously heard by Es; lengthy burst with local weather heard.)			
	1/23	Tr 0800-1730	CIAX*	106.9 ON London	65
	1/24-25	Es 0800-1400	KESS*	93.9 TX Fort Worth	1170
		0800-1400	KWJS*	94.9 TX Arlington	1150
		0800-1400	KYKR*	93.3 TX Port Arthur	1180
		0800-1400	KPFT*	90.1 TX Houston	1240
		0800-1400	KQUE*	102.9 TX Houston	1240
	1/29	MS 0800-2000	KQSC*	90.1 OK Edmond	1070
		(1st time by MS, previously heard by Es.)			
	2/14	GW 0032	CKQT	94.9 ON Oshawa	75
		(1st time heard by new calls, ex-CKQS.)			
	2/27	Tr 2135	WERG	89.5 PA Erie	100
		(1st time definitely heard on 89.5 MHz., previously heard on 89.1 MHz., although not apparently listed anywhere on new frequency; still 10 watts ??)			
	2/28	GW 2300	WJYE	96.1 NY Buffalo (ex-WBNY)	85
	3/7	Tr 2156	WCBF	88.9 NY Fredonia	90
		(Calls nor location never clearly mentioned, but assume new calls for WJQL Fredonia - 10 watts? Much local information given.)			
	3/18	Tr 2050	WHAD	90.7 WI Delafield	380
		2100	WBCL	90.3 IN Fort Wayne	300

All new loggings are underlined. Times are est. with distances in miles.

73, Pete

# EASTERN TV-DX

Bill Thompson  
1907 Seneca Street  
Buffalo, NY 14210

May 1979

Deadline: 5th

March tropo conditions were quite good in the southeastern U.S., as evidenced by reports from Florida DXers. Loggings of over 500 miles on UHF and highband VHF were reported on several dates. The most significant activity has been reported along the Atlantic coast, with none of the more spectacular Gulf tropo seen so far. We may see some Texas-Florida ducts reported next time.

Much of the rest of eastern North America had severe weather in late March and early April, with everything from a freakish spring snowstorm to severe ice storms and high winds in the northern Midwest and Northeast. As you know, this is hardly the kind of weather for great tropo conditions!

No sign of any real E-skip activity in March, as usual. The Es season will hopefully be coming to life as you read this. Early April has seen one or two fair Es openings in southern areas.

We have some more reports of F2 TV DX from this past February and March, and they are nothing short of spectacular, with good video reported from stations on channels B1 (Great Britain) and E2 (continental Europe) over 3000-mile paths into the northeastern U.S. Based on what has occurred so far, the coming F2 peak activity in late 1979 through early 1980 should be very productive!

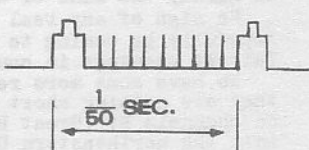
Glenn Jacobs RD #1 Box 354-A Moscow, Pennsylvania 18444

"Since my earliest days of DXing in the early 60's, my one goal and dream was to receive the BBC video via F2 skip. To this end, I procured a British 405 line receiver last summer in time for rising solar activity. No sooner than I received the set, the BBC and French audio began coming in (late October). At about the same time that the MUF reached 45 MHz on various days, tuner problems caused nothing more than frame bars to be noted. Finally, at the end of February, the receiver was in perfect working shape. From March 8th, MUFs appeared to be going up again on the east-west path and audio was fading in unbelievably early--6:30-7:00 a.m. On the morning of March 15 at about 7:10 a.m., Bill Grant phoned me from Worcester, stating that he was beginning to receive video buzz. I quickly warmed up the set and swung the yagi towards the U.K. Weak traces of video were seen at 7:20 a.m. By 7:30 I was able to hold the vertical and horizontal rock steady. At 7:45, the video was as strong as strong E-skip but the distortion was unreal. It looked as if the signals were coming in from about 10 paths, with lots of CCI--such as in a jammed up channel 2 Es opening--and what looked like a bit of aurora. The reports I've read about F2 video being smeared are something of an understatement. Finally, around 8 a.m. everything came together (only about 2-3 ghosts) with perfect images, and contrast. This was seen by my wife, a house guest and myself. The pictures were so good, anyone (non-DXer) could watch them. Needless to say, 35mm pictures were taken and are being sent away for developing. By 8:45 the pictures were strong but one big smear again, and stayed that way until 10:59 when we went from strong video to nothing. The audio faded in 20 minutes later and stayed until 3 p.m. Next day--the last day I have had audio--the audio came in at 6:30 a.m. and stayed in until 3:10 p.m.; not a trace of video. One thing I have noticed along with Bill Grant, Jerry Pulice and others: when the MUF hugs 41 MHz, audio is good. When it stays around 45 MHz, the 41 audio is poor--this until it rises up to around 48 MHz. Also, when the video was in a Russian pager was noted strong--any ideas? Frequency unknown due to using TV. Plans include a Rhombic for F2 work this fall. Several European standard receivers are enroute for several members. In all my years of DXing, nothing has or will ever come close to that moment when the video was plainly watchable from BBC. My deepest thanks go to WTFDA DXer Bill Grant, whose constant monitoring, tips, and schedule data proved invaluable, and to Gordon Nelson, who did hour after hour of surgical work on the Phillips tuner. Without these two, the receptions would never have taken place." Equipment includes 19 inch Sony, GE portable, 19 inch Phillips 405-line British TV receiver, Channel Master Super Crossfire VHF antenna, 7' Channel Master UHF dish, Blonder-Tongue and Winegard preamps, CDE Ham II rotators. Elevation: 2000' above sea level.

Jerry Pulice, WB2CPA 143 Gibson Avenue Staten Island, NY 10308 (212)984-7325  
 "It seems conditions got better after last Feb. 7. So much better, a 625 line picture was received on 48.25 MHz, on a regular U.S. TV and an up-converter to U.S. ch 6. The continental video on 48.25, and British audio on 48.27 were in for days, except that I only caught it at home one weekend. All reception 41-48 MHz F2:

February (EST)

- 11 F2 0900 French and English audio in at 41 MHz
  - 1045 Video on 45, strong picture very ghosty
  - 1230 Recognizable faces on 45 MHz, strong zero offset (barber-pole writhing thru picture).
  - 1250 BBC newscast on Iran--picture very watchable although ghosted, signals +60db over S9.
  - 1255 Band closed suddenly.
- 14 1030 625 line/50 Hz negative polarity video 50 + S9 on 48.25 MHz. Using a scope (at work--TV gear was at home)(\*!#?!) wave form was as follows at right:  
 Evidently a test pattern with horizontal bars, mostly white--any ideas who this was?
 


- 15 1230 48.25 MHz 625 line video, 50 + S9, also 45 MHz 405 line in all morning.
- 16 1145 48.25 MHz 625 line video, 45 MHz 405 line all morning.
- 17 Back at home, 625 line 48.25 MHz TV rx ready.
  - 1150 Both BBC audio & video with 1 kc heterodyne on 48.25. 48.25 MHz video buzz up suddenly.
  - 1155 Horizontal & vertical lock on 625 line rx!--picture not recognizable, though.
  - 1205 BBC audio predominant now on 48.25--'Tom & Jerry' cartoons 50 + S9."
  - 1212 1 kc & 3 kc whistle on 48.25 BBC ch B2--also two identical stations offset either side.
  - 1228 'Pink Panther' cartoons on BBC ch B2.
  - 1301 BBC1 ch B2 still 50 + S9--note no sign of 45 MHz video all day.
- 18 1200 625 line lock again on 48.25, still not recognizable as to picture content.
  - 1330 45 MHz video very strong--ghosty picture--quit--never thought I'd get bored by 3000 mile TV reception!

No F2 activity noted since. Next fall, I plan to be ready with better equipment for all world standards. New rx will be a superhet, tunable from 40 to 65 MHz. Biggest problem here is selectivity, as competition for spectrum around 45 MHz is fierce. New receiver will have a better shape factor filter (allowing as much as a 2.5 MHz video passband conditions allowing) so pictures should be more watchable. Will also try videotaping DX off screen with a TV camera for standards conversion. 73."

Ken Simon 513 6th Avenue South Lake Worth, Florida 33460 (EST)

<u>February</u>	<u>March</u>	<u>April</u>
15 Es? 1558 unID-2 CCI	3 F2 0855 TF1-F2 FRANCE	8 Tr 0556 WJKS-17 FL
17 F2 0945 TF1-F2 FRANCE	0910 BBC1-B1 U.K.	0634 WECA-27 FL
BBC1-B1 U.K.	21 1330 TF1-F2 FRANCE	0645 WJCL-22 GA
18 0915 TF1-F2 FRANCE	31 Tr 0630 WINK-11 FL*	0655 (WLTX)-19 SC
BBC1-B1 U.K.	0704 WFTV-9 FL*	0658 WOLO-25 SC
19 0901 TF1-F2 FRANCE		0709 WEBA-14 SC
1030 BBC1-B1 U.K.	7 Tr 0630 W33AA-33 FL*	0715 WJWJ-16 SC
20 1329 TF1-F2 FRANCE		0728 WCBS-20 GA
BBC1-B1 U.K.	1630 WTVX-34 FL*	"very tough"
24 0930 TF1-F2 FRANCE	2200 WJCL-22 GA	1200 WJWJ-16,
"in for about 35 sec."	WJCL-14 GA	WJCL-22, WJKS-17
	WJKS-17 FL	9 0558 unID-20 s/on

\*--using set's internal antenna. F2 loggings audio only. "I'm back in the action again after a few months lay off...a good start 7th, 8th & 9th. 73s"

Wayne M. Thompson Route 2, Box 156 Silver Springs, Florida 32688 (EST)

<u>March</u>	10 Tr	11	20	21	28
0726 WSFA-12 AL	325 1030 WRBL-3 GA	280 1150 WECA-27 FL	150 22 Tr 0550 WYRA-38 GA	280 2200 WWAY-3 NC	440
0731 WDHN-18 AL	250 1150 WALB-10 GA	200 0012 WECT-6 NC	450 2300 WIS-10 SC	350 2226 WTOG-11 GA	225
0800 WYRA-38 GA	280 0105 WITN-7 NC	550 2359 WALB-10 GA	200 2302 WXGA-8 GA	175 2330 WRLK-35 SC	350
0829 WJCL-22 GA	225 0010 WJHG-7 FL	220 28 0001 WATU-26 GA	310 0033 WJCL-22 GA	225	
0859 WCIC-7 AL	360 20				
0900 WTVM-9 GA	280 21				
0930 WTOG-11 GA	225				

Month	Day	Time	Call	Station	City	State	Zip	Notes	
February	6 Tr	2307	W33AA-33 FL	WNTV-29 SC	447	19 Tr	2220	WRJA-27 SC 373	
			W64AD-64 FL	WNBC-30 SC	433			WPTF-28 NC 523	
	2312	ZNS-13 BAHAMAS	0829	WYEA-38 GA	341			WJPM-33 SC 408	
		Nassau 348		WRLK-35 SC	385			WRLK-35 SC 385	
	12	0758	WJWJ-16 SC	290	20	1200		WCIV-4 SC 309	
			2238	WJWJ-16 SC	290	2345		WEBA-14 SC 320	
	14	0618	WJHG-7 FL	274	0831			WRJA-27 SC 373	
			0623	WDHN-18 AL	301	0833		WJPM-33 SC 408	
	15	0715	WFSU-11 FL	230	0836		21	0615	WJWJ-16 SC 290
			0645	"CCI chs 6,10"		0838		0640	WFSU-11 FL 230
	18	0929	WMBB-13 FL	263				WDHN-18 AL	301
			WYEA-38 GA	341				WJHG-7 FL	274
	19 Es?	1644	WJWJ-16 SC	290	0844			0650	WMBB-13 FL 263
			0749	WDCO-15 GA	294			0656	WJPM-33 SC 408
	28 Tr	2102	WYEA-38 GA	341	0904			0700-0730	"I'm busy"
			2200	unID-4 "strange 20 kHz-type bars to W.w/steady, slowly rising/falling whistle--seen several nights since..."		0906		0730	WMAA-19 MS 479
	March	1 Tr	0840	WATU-26 SC	337	1057			WALA-10 AL 415
				0756	WABW-14 GA	244	2054		
	7	0758	WJWJ-16 SC	290					"opening strengthening, but had to leave. 0900 check FM in car--PACKED with signals, but no time to ID."
			0758	WLTN-19 SC	392				
	8	2251	WATU-26 SC	T	2241		22	0000	WDHN-18 AL 301
			0800	WACS-25 GA	302	2243		0002	unID-23 N.W.
	9	2130	WYEA-38 GA	341	2305		0004	WGIQ-43 AL 329	
			2252	WJPM-33 SC	T			0005	Panama City V's
	10	0827	WRLK-35 SC	385				0800	WABW-14 GA 244
2138			WIS-10 SC	387			0806	W33AA-33 FL 191	
18	0627	WJWJ-16 SC	290	2050		27	0728	W33AA-33 FL 191	
		2158	WCBS-20 GA	329				W64AD-64 FL 164	
19	0704	WJWJ-16 SC	290				0000	W61AA-61 FL 184	
		2202	WLTN-19 SC	392				W69AA-69 FL 190	
28	0620	WYEA-38 GA	341	2055			1937	WCIV-4 SC 309	
		2247	WRBT-36 NC	465				WITV-7 SC 309	
April	2 Tr	0828	WYEA-38 GA	341	0704		0624	WCSC-5 SC 309	
			0833	WDCO-15 GA	294			0625	WOLO-25 SC
3 Tr?	0930	WJWJ-16 SC	290	0757			0630	WJPM-33 SC 408	
		0833	WDCO-15 GA	294				WRLK-35 SC	
4 Es	2050+	WJWJ-16 SC	290					WJWJ-16 SC 290	
		0833	WDCO-15 GA	294				WBTW-13 SC	
10	0827	WJWJ-16 SC	290					WJPM-33 SC 408	
		0833	WDCO-15 GA	294				WJPM-33 SC 408	
10	0827	WJWJ-16 SC	290					WJPM-33 SC 408	
		0833	WDCO-15 GA	294				WJPM-33 SC 408	
10	0827	WJWJ-16 SC	290					WJPM-33 SC 408	
		0833	WDCO-15 GA	294				WJPM-33 SC 408	
10	0827	WJWJ-16 SC	290					WJPM-33 SC 408	
		0833	WDCO-15 GA	294				WJPM-33 SC 408	
10	0827	WJWJ-16 SC	290					WJPM-33 SC 408	
		0833	WDCO-15 GA	294				WJPM-33 SC 408	
10	0827	WJWJ-16 SC	290					WJPM-33 SC 408	
		0833	WDCO-15 GA	294				WJPM-33 SC 408	
10	0827	WJWJ-16 SC	290					WJPM-33 SC 408	
		0833	WDCO-15 GA	294				WJPM-33 SC 408	
10	0827	WJWJ-16 SC	290					WJPM-33 SC 408	
		0833	WDCO-15 GA	294				WJPM-33 SC 408	
10	0827	WJWJ-16 SC	290					WJPM-33 SC 408	
		0833	WDCO-15 GA	294				WJPM-33 SC 408	
10	0827	WJWJ-16 SC	290					WJPM-33 SC 408	
		0833	WDCO-15 GA	294				WJPM-33 SC 408	
10	0827	WJWJ-16 SC	290					WJPM-33 SC 408	
		0833	WDCO-15 GA	294				WJPM-33 SC 408	
10	0827	WJWJ-16 SC	290					WJPM-33 SC 408	
		0833	WDCO-15 GA	294				WJPM-33 SC 408	
10	0827	WJWJ-16 SC	290					WJPM-33 SC 408	
		0833	WDCO-15 GA	294				WJPM-33 SC 408	
10	0827	WJWJ-16 SC	290					WJPM-33 SC 408	
		0833	WDCO-15 GA	294				WJPM-33 SC 408	
10	0827	WJWJ-16 SC	290					WJPM-33 SC 408	
		0833	WDCO-15 GA	294				WJPM-33 SC 408	
10	0827	WJWJ-16 SC	290					WJPM-33 SC 408	
		0833	WDCO-15 GA	294				WJPM-33 SC 408	
10	0827	WJWJ-16 SC	290					WJPM-33 SC 408	
		0833	WDCO-15 GA	294				WJPM-33 SC 408	
10	0827	WJWJ-16 SC	290					WJPM-33 SC 408	
		0833	WDCO-15 GA	294				WJPM-33 SC 408	
10	0827	WJWJ-16 SC	290					WJPM-33 SC 408	
		0833	WDCO-15 GA	294				WJPM-33 SC 408	
10	0827	WJWJ-16 SC	290					WJPM-33 SC 408	
		0833	WDCO-15 GA	294				WJPM-33 SC 408	
10	0827	WJWJ-16 SC	290					WJPM-33 SC 408	
		0833	WDCO-15 GA	294				WJPM-33 SC 408	
10	0827	WJWJ-16 SC	290					WJPM-33 SC 408	
		0833	WDCO-15 GA	294				WJPM-33 SC 408	
10	0827	WJWJ-16 SC	290					WJPM-33 SC 408	
		0833	WDCO-15 GA	294				WJPM-33 SC 408	
10	0827	WJWJ-16 SC	290					WJPM-33 SC 408	
		0833	WDCO-15 GA	294				WJPM-33 SC 408	
10	0827	WJWJ-16 SC	290					WJPM-33 SC 408	
		0833	WDCO-15 GA	294				WJPM-33 SC 408	
10	0827	WJWJ-16 SC	290					WJPM-33 SC 408	
		0833	WDCO-15 GA	294				WJPM-33 SC 408	
10	0827	WJWJ-16 SC	290					WJPM-33 SC 408	
		0833	WDCO-15 GA	294				WJPM-33 SC 408	
10	0827	WJWJ-16 SC	290					WJPM-33 SC 408	
		0833	WDCO-15 GA	294				WJPM-33 SC 408	
10	0827	WJWJ-16 SC	290					WJPM-33 SC 408	
		0833	WDCO-15 GA	294				WJPM-33 SC 408	
10	0827	WJWJ-16 SC	290					WJPM-33 SC 408	
		0833	WDCO-15 GA	294				WJPM-33 SC 408	
10	0827	WJWJ-16 SC	290					WJPM-33 SC 408	
		0833	WDCO-15 GA	294				WJPM-33 SC 408	
10	0827	WJWJ-16 SC	290					WJPM-33 SC 408	
		0833	WDCO-15 GA	294				WJPM-33 SC 408	
10	0827	WJWJ-16 SC	290					WJPM-33 SC 408	
		0833	WDCO-15 GA	294				WJPM-33 SC 408	
10	0827	WJWJ-16 SC	290					WJPM-33 SC 408	
		0833	WDCO-15 GA	294				WJPM-33 SC 408	
10	0827	WJWJ-16 SC	290					WJPM-33 SC 408	
		0833	WDCO-15 GA	294				WJPM-33 SC 408	
10	0827	WJWJ-16 SC	290					WJPM-33 SC 408	
		0833	WDCO-15 GA	294				WJPM-33 SC 408	
10	0827	WJWJ-16 SC	290					WJPM-33 SC 408	
		0833	WDCO-15 GA	294				WJPM-33 SC 408	
10	0827	WJWJ-16 SC	290					WJPM-33 SC 408	
		0833	WDCO-15 GA	294				WJPM-33 SC 408	
10	0827	WJWJ-16 SC	290					WJPM-33 SC 408	
		0833	WDCO-15 GA	294				WJPM-33 SC 408	
10	0827	WJWJ-16 SC	290					WJPM-33 SC 408	
		0833	WDCO-15 GA	294				WJPM-33 SC 408	
10	0827	WJWJ-16 SC	290					WJPM-33 SC 408	
		0833	WDCO-15 GA	294				WJPM-33 SC 408	
10	0827	WJWJ-16 SC	290					WJPM-33 SC 408	
		0833	WDCO-15 GA	294				WJPM-33 SC 408	
10	0827	WJWJ-16 SC	290					WJPM-33 SC 408	
		0833	WDCO-15 GA	294				WJPM-33 SC 408	
10	0827	WJWJ-16 SC	290					WJPM-33 SC 408	
		0833	WDCO-15 GA	294				WJPM-33 SC 408	
10	0827	WJWJ-16 SC	290					WJPM-33 SC 408	
		0833	WDCO-15 GA	294				WJPM-33 SC 408	
10	0827	WJWJ-16 SC	290					WJPM-33 SC 408	
		0833	WDCO-15 GA	294				WJPM-33 SC 408	
10	0827	WJWJ-16 SC	290					WJPM-33 SC 408	
		0833	WDCO-15 GA	294				WJPM-33 SC 408	
10	0827	WJWJ-16 SC	290					WJPM-33 SC 408	
		0833	WDCO-15 GA	294				WJPM-33 SC 408	
10	0827	WJWJ-16 SC	290					WJPM-33 SC 408	
		0833	WDCO-15 GA	294				WJPM-33 SC 408	
10	0827	WJWJ-16 SC	290					WJPM-33 SC 408	
		0833	WDCO-15 GA	294				WJPM-33 SC 408	
10	0827	WJWJ-16 SC	290					WJPM-33 SC 408	
		0833	WDCO-15 GA	294				WJPM-33 SC 408	
10	0827	WJWJ-16 SC	290					WJPM-33 SC 408	
		0833	WDCO-15 GA	294				WJPM-33 SC 408	
10	0827	WJWJ-16 SC	290					WJPM-33 SC 408	
		0833	WDCO-15 GA	294				WJPM-33 SC 408	
10	0827	WJWJ-16 SC	290					WJPM-33 SC 408	
		0833	WDCO-15 GA	294				WJPM-33 SC 408	
10	0827	WJWJ-16 SC	290					WJPM-33 SC 408	
		0833	WDCO-15 GA	294				WJPM-33 SC 408	
10	0827	WJWJ-16 SC	290						

Rich Turcany 7 Cayer Circle Shelton, Connecticut 06484 (ES1)

December		February		13 F2 1300		ORTF-F2 FRANCE	
10 Es	2113 KFGA-2 MN 940	9 Es	1948 unID-3 "WEAR?"	14	1239	BBC1-B1	(Ø)
17	1635 WSB-2 GA 720		2000 WBT-2 FL 1050				ENGLAND
	1700 WSJK-2 TN		WTVJ-4 FL 1050				"promo for
	Sneedville 580	17 F2	1225 ORTF-F2 FRANCE				'Calling Nation-
	1800 WMAB-2 MS 1000		1300 BBC1-B2 (Ø)				wide' pgm, nx"
	1856 WBRZ-2 LA 1080						ORTF-F2 FRANCE
	unIDs to ch 4		ENGLAND				BBC1-B1 (-)
28	1803 KTEW-2 OK	<u>March</u>		15	1445		Llanddona WALES
	Tulsa 1160	5 At	West Palm Beach, FL:				"w/rock music
29	1500 WESH-2 FL 860	Tr	2000 WFTV-9 FL 150				program"
	WBRZ-2 LA 1080	8	1927 unID-25				BBC1-B1 (-)
			"WCIX xltr"	16	1439		Llanddona WALES
			W69AA-69 FL				"w/'Wonder
<u>January</u>							Woman!"
31 GW	1433 WLIW-21 NY 35	10	0830 unID-9 "Cuba?"				ORTF-F2 FRANCE
	"testing new		"CCI w/WFTV"				ORTF-F2 FRANCE
	xmtr at new	13	Back at Shelton:				
	location	F2	1230 BBC1-B1(Ø)U.K.	19	1447		

"Winter DX, of course, is very seldom here, but thanx to a Regency 'Touch' scanner I received for Xmas, I'm receiving the audio and video signals of the BBC and ORTF from Europe. Since the audio is AM, the scanner has trouble picking it up. But, by turning up the volume to almost maximum, it can be clearly received. Good to see that Fairfield County may get its first commercial TV station because of two applications with the FCC. It will be channel 43, but really isn't the first station. Channel 43 (as WICC-TV) operated as an ABC network affiliate from 1953 until 1968. Once WNJU-47 and the dark WSNI-67 start their STV systems, New York will have three pay-TV stations (WTVG-68 being the only one now). Visited West Palm Beach early in March, had tried for skip, but ended with good tropo and a possible channel 9 from Cuba which had a color bar test pattern. 73's"

Robert Goodman 5129 W. Roosevelt Road Apt. B7 Cicero, Illinois 60650

September (CDT)		7 Tr		0026 WIPB-49 IN 160		3 Tr 2230 WNBC-45 WKBN-27	
6 Tr	2205 WHMB-40 IN 160		0034 WVTV-18 WI			2300 WJAC-6 WWS-5	
	WFFT-55 IN 140		WLFI-18 IN			2330 WFMJ-21 WFTV-55	
	WTVF-47 IL 120		unIDs on ch 18	24	At Bronx, NY (EST)		
	2230 unID-57 WBGU?		unID-4		GW 2000 WBDW-49 CT 40		
	unIDs on ch 3	9	0903 WKZO-3 MI		<u>February (CST)</u>		
	2257 unID-56 WTVS?	<u>October</u>		26	Back at Cicero:		
	2302 "CCI on 7, 9"	28 At	Remington IN (CDT)	Tr	2050	WGVG-35 MI 130	
	2323 WKBD-50 MI 240	Tr	2030 WISC-3 WI 200			WUHQ-41 MI 130	
	2350 WFYI-20 IN 140		2100 WTMJ-4 WI 160			2105 WLFI-18 IN 110	
	2332 WKIX-19 KY 250		2133 WRTV-6 IN 90			WFIY-20 IN 140	
	2335 unIDs on ch 27		2200 WHBF-4 IL 170			2130 WTHR-13 IN 140	
	2336 WKCF-22 OH 220		2207 WREX-13 IL 140	27		0730 WTHR-13 IN 140	
	"slaughtering		WQAD-8 IL 170			WZZM-13 MI 130	
	WSBT video"		2227 WILH-12 IL 80			0759 unID-35 Ø WGVG	
	2343 WKJG-33 IN 140		2304 WTVS-10 WI 160			0930 WQRF-39 IL	
	2345 unIDs on 62	29	(CST)			Rockford 80	
	"probably WTVQ, WGPR"		0630 WITL-6 WI 160			1930 Peoria,	
7	0003 WLIQ-35 OH 200		WRTV-6, WKZO-3			Rockford stns	
	0012 unID-43 WUAB?		0651 WISN-12 WI 160		<u>March</u>		
	0017 KDUB-40 IA 160	<u>November</u>		17	Tr a.m.	"some tropo	
	0022 WLKY-32 KY 270	3 At	Pittsburgh PA (EST)	22		in mornings"	
		Tr	2200 WTRF-7, WSTV-9				

"In Cicero before I left, there was some more tropo (nothing special) on the mornings of September 10 and 26, and overnight October 1-2. The 9/10 a.m. weather report included an ozone yellow alert with an inversion layer at 2,000 feet. The Carson Inn's TVs in Remington are fed (V&JHF) by a multi-element VHF antenna on a tall mast pointed NNW at Chicago. It must have a strong front/back, as evidenced by the paucity of signals from Indianapolis. The desk clerk said 'we don't get UHF (sic)', but South Bend and Chicago U's were in on 10/28. Pittsburgh and New York logs were with indoor antennas. BBC TV audio was frequent in N.Y.C. early that winter. The Pittsburgh tropo came during a period of air stagnation, though some of those stations are normal for nearby hilltop locations. I'd seen WSTV at that house (my cousin's) some years ago, but I didn't think they usually get those stations, so I figure they're DX. The 9/7 Cicero logging of WIPB was a valuable catch, though I didn't know that until I recently sent for a QSL. They were testing at 1/4 power (low to start with) after xmtr failure!"

# WESTERN TV-DX

May 1979

Fred McCormack  
Box 5221  
State University Sta.  
Fargo, ND 58102

Deadline: 5th

There are three reporters this month. One is of recent DX and the other two are of 1978 DX. John Anderson had trouble with the mail last year and none of his reports reached Bill Block. He has forward his loggings to me, and I have condensed his loggings, listing all mention of Es and including all of his best loggings, some of which were very good. Pat Dyer provides some 1979 Es loggings. Hopefully Es should be occurring more frequently soon, especially in the south. Let's have lots of reporters next time!

New	New Mode	Tentative	Unidentified
John F. Anderson, Box 186, Lowe Farm, MB ROG-1EO (204)-746-8887 CT			
<u>December 1977</u>		<u>June 1978</u>	<u>August 1978 (cont.)</u>
26 Es 2000 unids		4 Es 0030 unid - 2 se	23 tr 2100 KRNE 12 NE 483
27 Es 1900 WDTN 2 OH		20 Es 2030 WPSD 6 KY	2345 KXON 5 SD 392
1915 KTVI 2 MO		2045 WLAC 5 TN	2346 KSFY 13 SD 405
(MUF ch 4)		2130 KARK 4 AR	KELO 11 SD 405
<u>May 1978</u>		24 Es 1100 KORK 3 NV	24 tr 2300 KYIN 24 IA 470
2 AE 0059 CFAC 2 AB		KMID 2 TX	25 tr 0000 WMTV 15 WI 575
0130 CFJC 4 AB		<u>July 1978</u>	0020 WBAY 2 WI 550
0132 CHBC 2 BC		11 Es 2200 unid - 2 se	0115 WREX 13 IL 630
CHKlt 5 BC		22 Es 1300 KPRC 2 TX	0130 WISN 12 WI 622
CHKMt 6 BC		KOAI 2 AZ	0150 WTHR 13 IN 857
4 AE?2100 CHSJ 4 NB		KDBC 4 TX	0210 WLUX 11 WI 550
CFCM 4 QU		KTVX 4 UT	0225 WBSM 2 IL 696
10 AE?2338 CFAC 2 AB		25 tr 2200 K10IH 10 MN	1830 WDSE 8 MN 300
2355 CFCN 4 AB		<u>August 1978</u>	<u>September 1978</u>
(MUF 107.9)		5 Es 0130 unid - 4 w	6 tr 0110 WMT 2 IA 550
0010 KREM 2 WA		(eskimo announce.)	0115 WHO 13 IA 560
0013 KXLY 4 WA		11 Es 0045 KCKT 2 KS	0130 WEAU 13 WI 416
0030 (MUF 107.5)		13 tr 0240 KCCI 8 IA 560	0200 KRGG 13 MO 785
0108 KCBI 2 ID		1100 KDIJ 11 IA 560	0215 KPLR 11 MO 816
21 Es 1400 WMAB 2 MS		WHO 13 IA 560	0225 WISN 12 WI 622
24 tr 0003 KOLN 10 NE 530		1250 WKBT 8 WI 481	0237 WISC 3 WI 975
2141 WEAU 13 WI 416		1900 KPTC 10 MN 432	0244 KCCI 8 IA 560
2127 WSAU 7 WI 470		1940 KIIN 12 IA 600	<u>December 1978</u>
(CKY off air)		2002 WAEOt12 WI 450	9 Es 0000 WMAB 2 MS 1150
29 Es 0000 KWGN 2 CO 765		17 tr 0024 CBC st ch12 ne	31 AE?0224 CPTK 2 BC
1900 CKPG 2 BC 1095		0105 WEAU 13 WI 416	(PSA's Queen Charlotte Islands)
31 Es 1700 KOAI 2 AZ			

Tropo on August 25 and September was just great! WTHR-13 Indianapolis is my best ever trop logging at 857 miles. There was also some interesting skip openings to the extreme east and west of Canada during this reporting period.

At the moment, my CM preamp is inoperable (possibly a bad transistor) due to a faulty RG-11u adapter at the pre-amp end. It seems to cause shorts as the antenna is rotated. I think I'll be able to remedy the situation by using RG-59 from the preamp to the tower and leave the RG-11u stationary. 73 and Good DX

Thomas Payne, 8430 West 35th St., St. Louis Park, MN 55426 CST

## August 1978

13 tr 1126	WTVQ 17 IL 270	I use a Channel Master 4251 7 foot paraboloid dish.
	WMTV 15 WI 230	
1240	WIRL 19 IL 350	

Pat Dyer, 5315 Silvertip Drive, San Antonio, TX 78228

CST

Equipment: 1976 model 9 inch black &amp; white Penncrest; Archer V-100 and 8 bay bow-tie UHF array at 20 feet with rotor.

March 1979March 1979 (cont.)March 1979 (cont.)

4 Es 1725-	5 Es 0915 KNXTt 2 CA 1190	9 tr 0150 KFDM 6 TX 275
1755 unids 2-5	0925 KHBC 3 BCN1010	KSLA 12 LA 350
2245 KNXTt 2 CA 1190	0929 XETV 6 BCN1100	0510 KNOE 8 LA 440
2250 KNBCT 4 CA 1190	7 Es 0935-	KITV 7 TX 280
2259 KORK 3 NV 1050	1130 unids 2,3	0525 KTRF 9 TX 265
KOAI 2 AZ 855	0955 WBAYt 2 WI 1190	KLFY 10 LA 395
5 Es 0000 KUTVt 2 UT 1080	1100 KDAlT 3 MN 1250	11 Es 1030-
0050 apx f/out	KTCA 2 MN 1110	1100 unids 2,3 west
0850-	9 tr 0035 WRBTt33 LA 450	KNXTt 2 CA 1190
0955 unids 2-6	0059 KPLC 7 LA 325	26 tr 0529 KPLC 7 LA 325
0855 KORKt 3 NV 1050	0100 WAFB 9 LA 450	28 tr 0110 WAFB 9 LA 450

A lot of trop in month, but most of it in-state variety. The Es levels up a bit from what one expects in the lowest month of the year. Maybe some Es-linked TE next time. 73, WA9IYX

Now my loggings:

Fargo: Equipment - Broadmoor 9" B&amp;W, Heath GR-2000, Winegard CH-7078

CST

March 1979April 1979

16 F2 1120-	5 Es 1120-1200 KPRC 2 TX 1195
1330-BBC1 41.50 audio	

It was a very slow DX period. Considerable auroral activity was noted, but no ID's. The F2 skip seems to have ended. Early Es was surprising, but it was very poor with about ten minutes of viewable signal during the period.



Here's an interesting extract from the March '79 Broadcast Communications magazine: "South Africa - Letters from viewers who reported the reception of unknown TV signals were received by the South African Broadcasting Co. (SABC). After an investigation, the SABC announced that the strange signals were being received from the USSR's EKRAN satellite launched in 1976. The pictures were visible on ordinary television sets; and although of poor quality, the pictures were easily identified as coming from the Soviet Union." That's DX!

-contributed by Rod Luoma



## WTFDA 1979 REPRINT SERVICE CATALOGUE

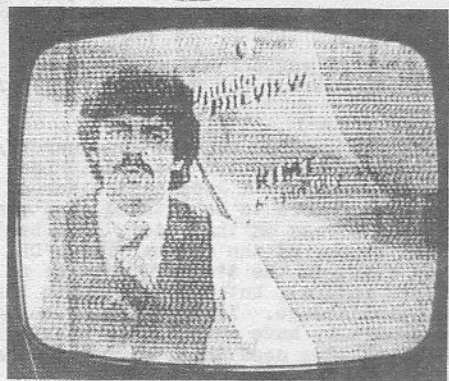
To get your copy, send a S.A.S.E. to WTFDA HQ



# PHOTO-NEWS

Jim Alexander  
4 Brook Court  
Parsippany, NJ 07054

May, 1979



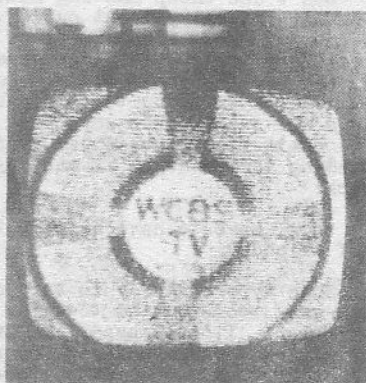
KIMT-3 Mason City, IA  
1,265 mile E-skip (Combs)



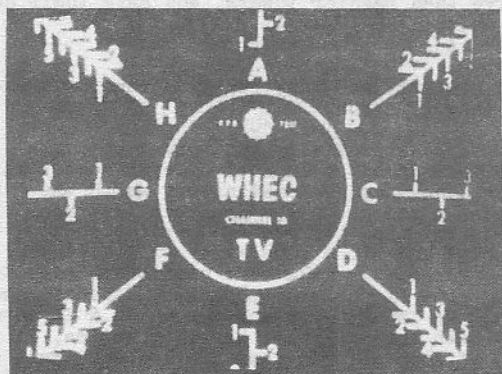
WILL-12 Urbana, IL  
300 mile tropo (Gaines)



KARD-3 Wichita, KS  
E-skip (Barber)



WCBS-2 New York, NY  
meteor scatter (Simon)



WHEC-10 Rochester, NY  
280 mile tropo (Gaines)

Don't miss Ken Simon's photo of WCBS by meteor scatter (above) ...

### Contributors:

John Combs,  
Orlando FL

Paul Gaines,  
Detroit MI

John Barber,  
Carolina RI

Ken Simon, (photo taken at  
West Palm Beach FL)

73 and good DX, *Jim*

# TECHNICAL TOPICS



**Q:** "I'm considering putting up a stack of four FM yagis (quad stack) for DXing purposes. Can I use a regular TV antenna rotator for such an array, or should I use a special model?"

**A:** You'll need a good heavy-duty rotor, not the cheaper type of consumer TV/FM antenna rotor that's usually adequate for turning one or two antennas. Look for a model that's recommended for the largest arrays. A good quad stack of FM yagis can present a load of as much as 75 lbs. or more to be rotated, and wind loading is enormous, putting a large amount of stress on the rotor. The best choice of rotor for this kind of array would be one of the amateur radio/CB type units. These are more expensive (they start in the \$100-\$200 range, as compared to the \$50-\$100 range for most TV/FM rotors), but they are worth the price if they save such an array from high wind damage. In addition to being designed to handle the larger loads, they generally have much better braking action than a cheaper TV/FM consumer-type unit. You need this to prevent the array from "windmilling".

**Q:** "What should I use for mast supports in a quad stack?"

**A:** Don't use cheap masting materials! If you do, it won't be long before the stack is literally "bent out of shape"—remember, wind loading characteristics are very large for this type of antenna configuration. As a bare minimum, you should use  $1\frac{1}{2}$  inch 16 gauge seamless steel mast to support the antennas themselves, and the whole array should be supported by nothing less than steel pipe (such as water conduit) obtainable from plumbing supply outlets. In fact, some DXers use quad stacks employing an H-frame (vertical and horizontal supports) made entirely of such pipe. This makes the array quite heavier than it would be using conventional TV masting—but it also makes for a very sturdy quad stack!

**Q:** "Do I have to have a tower to put up a quad stack? Can't I mount it on a roof tripod?"

**A:** This type of array is very difficult to put up. You can put a quad stack on a good roof-mounted tower or tripod tower, but getting it up there may pose a problem. It's necessary to build the quad stack on the ground, and most (if not all) such arrays for FM cannot be carried up a ladder, so they must be "winched" up by some method, such as a crane if you're able to use one. If you have a flat roof, you can assemble it on the roof. Otherwise you may have to devise your own method of roof mounting one of these monsters! Obviously, a tower is much more practical for a quad array, and just about the only way to support it. The ultimate in towers for such a stack would probably be a tilt-over or crank-up model. These would make installation and maintenance quite easy—but they are much more expensive than regular towers, and have their own special set of problems themselves.

**Q:** "What are the advantages of quad stacks? Are they really worth the trouble? How much additional gain will they give you?"

**A:** The primary advantage is the increased directivity and very deep nulls that are created, something that the DXer is often in need of even more than increased gain. To the TV or FM DXer, they are most definitely worth the trouble involved, as they will add some stations to the log that just would not have been detectable with a single antenna. If you are serious about meteor scatter (MS) DX on FM or highband VHF TV, a quad array will give you above average results. The very deep nulls will make some semilocals easy to live with, and even possibly give you some DX on local channels, depending how far you're situated from your locals. In theory, you can get up to 6 db more gain (over that of a single antenna) with a quad array, but in practice, it will be more like 4 to 5 db, because of combiner and feedline losses. Even so, together with the excellent directivity that a quad array gives you, the additional gain makes a quad stack a really high performance DX antenna system. There's a considerable cost involved, but for the DXer with the space and resources available, a quad stack is well worth it.

Q: "Why don't they include coverage of the VHF aviation band (108-136 MHz) on programmable scanners such as the Bearcat 210 and Regency Touch? They seem to be ignoring this band. Is there some way to modify a programmable scanner for coverage of the aviation band?"

A: Most of the programmable scanners on the market today are designed for monitoring the narrow-band FM transmissions on the public service bands. Since PSB scanners are FM receivers, attempting to convert one to receive the VHF aviation frequencies would be a poor idea, since the most widely used type of modulation in this range is AM. Fortunately, it would appear that the programmable scanner manufacturers haven't forgotten this band. Regency has come out with a new digital readout programmable scanner designed for the VHF aviation band. The unit is the ACT-T-720A, and it's similar to regular programmable PSB FM scanners, with a SEARCH function and a 16-channel memory, LED readout, keyboard, priority channels, etc. The Regency unit is called the "Digital Flight Scan"--and it's similar in appearance to their "Touch" PSB scanners. It retails for around \$350; hopefully other scanner manufacturers will provide competitive units, and prices will come down. This type of scanner could prove to be a great "DX machine" for the 108-136 MHz band--Regency claims 1  $\mu$ V sensitivity and 55 db adjacent channel rejection. When used with a good yagi (such as a modified FM antenna), such a receiver should give you great DX results.

Q: "Why are many UHF TV stations reducing power?"

A: In most cases, they're not reducing coverage--just using more antenna height above average terrain at lower effective radiated power (ERP). One very dramatic example of this is the way that a UHF translator with 1 kw transmitter power and an ERP of only 20 to 40 kw or so can actually have wider coverage than a regular TV station on UHF with an ERP of 500 kw. The "secret" is in the height of the transmitting antenna, as UHF stations are finding out. Some of the "super" translators are sited on top of mountains, with heights of 2000' AAT not uncommon, while many regular UHF TV outlets have urban locations, and antenna heights of less than 700' AAT. As the cost of energy increases, it's to the advantage of a UHF outlet to go to a higher tower, because of the money saved in reducing power. New UHF high-gain transmitting antennas have made this transition possible; U's can now get more ERP out, versus transmitter input power.

Q: "If F2 skip conditions keep improving, will we be able to see co-channel interference from other continents here in North America? How will we be able to tell that it's foreign CCI?"

A: If the F2 MUF reaches high enough, you will. For instance, channel 2 in North America (ch A2) has the same video carrier frequency (55.25 MHz) as channel 3 in most of Europe (ch E3), with the exceptions of the British Isles, the Soviet Bloc, Italy, France, and Monaco. New Zealand's channel 2 also has the same video carrier frequency as channel 2 in North America. Like North American channel 2, most of these areas are using offset frequencies, so the video carriers may be plus or minus 10 kHz above or below the nominal 55.25 MHz spot--and in some cases, "odd" offsets of 5 or 7 kHz are in use. In Europe and New Zealand, stations using 55.25 MHz for video carrier frequencies are transmitting 625-line pictures; the North American outlets are transmitting 525-line video. Because of the differences in standards, CCI from a 625-line video signal on a 525-line North American TV will look "weird"--it will look "slanted", and the picture will be hard to lock into sync. The weird CCI effects are due to the fact that the 625-line video has a different horizontal or line rate of 15,625 lines per second (North America's 525-line video has a line rate of 15,750 lines per second). This due to the fact that vertical rate (field rate) in North America is 60 Hz, and is 50 Hz in most of the rest of the world (based on local electrical standards). North American DXers may be able to lock 625-line video into sync by careful adjustment of vertical and horizontal sync controls on their sets, and should be able to see "most" of the picture, CCI and MUF conditions permitting. If you see foreign video via F2, there will be little doubt that what you're watching is "different". The "strangeness of the CCI" and "fuzzy picture" due to sharp MUF cutoff, together with the often extreme ghosting conditions, will make it quite obvious. Most of the 625-line systems use negative video modulation, as North America does.

# VHF UTILITY DX

Pat Dyer  
5315 Silvertip Drive  
San Antonio, TX 78228  
Deadline: 5th of month

MAY 1979

Neil Dickerson, 426 State St., Sharptown, MD 21861 Realistic PRO-1  
with Channel Master #5094 at 50 ft; Bearcat 12 for hi-VHF; EST used

2-18:

1200 KMA475 46.18 S.F.,CA-f  
KBP902 46.28 Huntington Bch,""  
1204 KME358 46.34 Santa Ana, " "  
1210 KMD655 46.14 Sunset Beach, " "  
1213 KMD397 46.38 San Pablo, " "  
1215 KOK388 47.54 Lynden,WA-vh  
1220 KMH304 47.66 S.F.,CA-amb  
1221 KXA236 " Burbank,""  
1225 KRX477 47.42 L.A., "-lg  
1227 KRJ722 46.38 Cypress,"-f  
1230 KQY870 46.42 Somerset,""  
KVG822 46.58 Salem,OR-f  
1231 KME358 46.06  
1233 KYK434 46.10 Newport,OR-f  
1240 KMB591 46.38 ElSobrante,CA-f  
1243 KMH260 46.42 Stratford, " "  
1250 KVM526 " Pollock Pines,""  
KNF94 " Sanger, " "  
1254 KGP693 " McMinnville,OR-f  
1256 KYL589 46.48 Hunt.Beach,CA-f  
1258 KOL924 45.64 McMinnville,OR-p  
1259 KEC895 46.58 Portland,OR-f  
1300 KSQ948 47.58 Bakersfield,CA-amb  
KMJ434 46.32 LaHabra, "-f  
1301 KMG853 " BuenaPark, " "  
KMA466 " Pleasant Hill,""  
1307 WSB48 46.02 Sonora, "-p  
1309 KBB851 " Flagstaff,AZ-p  
1312 KIB294 46.04 CasaGrande,"-lg  
1316 KCM660 46.42 CrystalBay,NV-f  
1320 KMJ456 46.26 GardenGrove,CA-f  
1323 KMH904 47.54 SanMateo, "-amb  
1327 KXX608 47.46 ScottsValley,"-p  
1332 KOL887 47.50 Olympia,WA-vh  
1334 KBR864 47.58 WallaWalla,""  
1335 KMF876 46.38 Pittsburg,CA-f  
1341 KCI607 47.66 Ferndale,WA-lg  
1346 KML703 46.50 MillValley,CA-f  
1349 KFG460 47.58 Santa Ana, " "  
1400 KGW765 46.02 Pasadena, " -p

2-19:

1000 KMA526 46.18 S.F.,CA-f  
1002 KOP903 45.92 Dana Pt.,"-p  
KEU92 " Hunt.Bch. " "  
1009 KUL735 46.04 Lynden,WA-lg  
1010 KUV684 45.98 Castaic,CA-p  
1014 KXM824 " SantaRosa,""  
1030 KMG853 46.06  
KMH292 " Eureka,CA-f  
2-21:  
1100 KMA526  
1106 KIB295 46.00 CasaGrande,AZ-lg  
1115 KCS579 47.54 Amarillo,TX-vh  
1121 KKE609 48.10 Eagle Pass,"-lg  
1125 KKA790 45.90 River Oaks,"-p  
1136 KKS287 " Grapevine, " "  
1200 KIT960 47.50 Gainesville,FL-vh  
2-25:  
1130 KOF346 44.66 Tucson,AZ-p  
KCI703 " Kingman, " "  
1145 KOB639 " Parker, " "  
1151 KOB565 " Bisbee, " "  
1200 KDP351 46.38 Carrollton,TX-f  
3-2:  
0800 KYE994 154.19 NY,NY-f  
3-3:  
1009 KGA346 154.19 UpperDarby,PA-f  
1026 KGA853 159.09 " " "-p  
1730 KEB842 155.37 Oakhurst,NJ-p  
3-4:  
0708 KIC548 154.19 Norfolk,VA-f  
0741 - 156.80 HamptonRds,VA-cg  
3-13:  
0800 KIK537 155.37 Williamsbg,VA-p  
3-16:  
2000 - 156.80 Norfolk,VA-map  
2132 - " CapeHatteras,NC  
-cg  
(amb-ambulance, f-fire, cg-coast  
guard, lg-local government,  
p-police, vh-veterinary hospital,  
map-marine police)

(several hi-VHF loggings under 100 miles were deleted - pjd)

Martin J. Theil, 12 Princeton Dr. E., Holiday, FL 33589 is still very anxious to hear from other members regarding the Bearcats and various indoor antenna systems; Bearcat 210 with rod antenna, typical March loggings (EST)

1700 KTY214 39.50 Cut Bank,MT-cp 1706 KOA216 39.82 Great Falls,MT-cp  
1710 KMA268 39.82 LA,LA-cp 1722 KOA722 39.82 Missoula, " "  
1724 KOG902 39.82 Twin Falls,ID-p 1726 KOG986 39.82 Gooding,ID

March 10.7-cm solar flux average down to 188, but when put into the calculations for the smoothed level the Cycle continues to rise well. Due to seasonal changes and magnetic activity, many things occur that didn't with much higher flux levels earlier in the year.

## VHF UTILITY DX

MAY 1979

Randall B. Clark, Route 5 - Dutch Ridge, Parkersburg, WV 26101 GMT used

BBC Ch B-1 41.5 (TV audio):  
 3-2: 1440-1842 14: 1430-1925 (1815-1915, Divis & Crystal Pal.)  
 3: 1510-1922 15: 1318-2026  
 7: 1302-1910 16: 1330-2021  
 8: 1320-1615 19: 1530-1705  
 13: 1415-1915 20: 1415-1740, 1810-1925

BBC Ch B-1 45.0 (TV video): (No BBC Ch B-2 48.25 audio  
 3-2: 1515-1530 15: 1320-1630 or any 48.25 Ch E-2 video  
 1725-1748 16: 1400-1703 noted in March)  
 1805-1838

BBC Ch B-2 51.75 (TV video):  
 3-15: 1502-1555 (first ever) 16: 1540-1645

TF Ch F-2 41.25 (TV audio):  
 in on most days B-1 in and alone on 3-9: 1330-2030

During March 13-16 BBC video noted in early in the morning while the audio did not appear until the afternoon hours.

Now, my loggings. Hallicrafters SX-62, Hammarlund SP-600-JX-10, Allied A-2586, Patrolman (c. 1967); two 30' long-wires at 12' ne-sw and nw-se runs; 49.5+ loggings on Swan 250 with Ameco nuvistor preamplifier and 5-el horizontal Cushcraft Yagi at 23' with rotor; all F2 unless noted (\* Es, bs-backscatter) with daily MUF peaks given; new underlined, GMT

3-6:  
 1755 low-33 US  
 1825 mid-45 Carrib.  
 2000 KH6NS 50.1+ Oahu, HI-a  
 2140 45.25 New Zealand (TV video)  
 3-7:  
 1401 KCH677 33.70 Fitchburg, MA-f  
 KCB404 " Ashburnham, " "  
 KCG342 " Barre, " "  
 KCB778 " Berlin, " "  
 KBA887 " Bolton, " "  
 KCF337 " Boylston, " "  
 KCA395 " Gardner, " "  
 KCD582 " Harvard, " "  
 KCC705 " Holden, " "  
 KCB364 " Hubbardstown, ""  
 1402 KDN599 " Paxton, " "  
 KCN575 " E.Princeton, ""  
 KCH585 " Rutland, " "  
 KCD537 " Sterling, " "  
 KCH239 " W.Boylston, " "  
 KAV942 " Winchendon, " "  
 1443 TF 41.25 (French TV audio)  
 1515 50.075 Colombia  
 1525 50 bs OH, OK  
 1600 BBC 41.5 (England TV audio)  
 1735 39 US, 2350 45.25 N.Z.  
 3-8:  
 0135 38.18 Russian, 1250 low-30 Rus.  
 1314 KCD472 33.94 WindsorLocks, CT-f  
 1400 KCA305 37.54 Eddington, ME-u  
 1440 TF 41.25, 1447 mid-40 Canada  
 1535 39 US  
 1549 ----- 35.22 Wilkes-Barre, PA-vp  
 1600 BBC 41.5, 1710 49.995 se  
 2130 45.25 N.Z.  
 3-9:  
 0015 mid-39 Russian ?  
 0057 KOA796 35.58 Portland, OR-tp  
 3-9:  
 1300 KCD498 33.70 Sandwich, MA-f  
 1345 TF 41.25, 1359 US 39  
 1430 BBC 41.5  
 1433 ----- 35.58 Scranton, PA-vp  
 1440 hi-39 Canada, 1920 nr 48 Span.  
 2100 45.25 N.Z. (all 3 off-sets)  
 2310 38.87 Russian  
 2311 KOB238 37.48 Seattle, WA-light  
 3-10:  
 1328 D.Welle 30.30 (Carib.relay)-ha  
 1430 49.98, 1625 39 US (Mass)  
 1720 50 bs CA  
 1950 50.75 N.Z. (TV audio)  
 2050 51 bs CA  
 2100 ZL1AVZ 51.1+ Auckland, N.Z.-a  
 ZL1AUM " " " "  
 2215 45.25 N.Z.  
 3-11:  
 1443 Wilkes-Barre, 1532 39 US  
 2015 50.76 N.Z. (TV audio)  
 51 bs CA  
 3-12:  
 1350 TF 41.25, 1405 40.05 Russian  
 1448 KCA305  
 1450 KCA346 37.54 Ellsworth, ME-he  
 2250 45.25 N.Z., 2325 49.6  
 2330 mid-39 Russian  
 3-13:  
 1352 TF 41.25  
 1422 KCG405 37.54 Bangor, ME-he  
 1447 BBC 41.5, 1505 40.05 Russian  
 1725 KOA796, 2130 45.25 N.Z.  
 2313 49.6, 2345 mid-39 Russian  
 3-14:  
 1309 KCI299 35.22 New Haven, CT-tp  
 KEA860 " N.Y., NI- "  
 1328 TF 41.25, 1335 BBC 41.5  
 1550 R.Moscow 38.87-ha; 39 US

VHF UTILITY DX

MAY 1979

(Dyer, cont.)

3-14:  
 1755 KUA288 35.22 Portland,OR-tp  
 1813 KOB238, 2230 49.6  
 2309 KOP303 35.46 Langley,WA-mp  
 2348 KLF527 35.22 Honolulu,HI-tp  
 2355 mid-37 Russian  
 3-15:  
 1350 TF 41.25, BBC 41.5  
 1427 R.Moscow, 1433 KCA305  
 1455 BBC 45 (TV video)  
 1555 44 Russian  
 (1558-1635, local power outage)  
 1628 KCI299, 1700 44+ Spanish  
 3-16:  
 0110 37.80 Russian  
 1355 BBC 41.5, 1357 W.-Barre  
 1402 39 US, 1425 TF 41.25  
 1425 mid-40 Canada  
 1520 BBC 45, 1715 49.6  
 3-17:  
 0020 KUA288  
 1331 KCG491 33.66 Wallingford,CT-f  
 1708 Scranton, 1710 39 US  
 1940 50.76 N.Z., 2247 49.81 se  
 3-18:  
 0018 mid-37 Russian  
 1319 KCI299, 1520 KEA860  
 1600 mid-36 Russian, 1835 49.6  
 2000-2115 50 bs FL,OK,Mex,CA  
 2125 45.25 N.Z.  
 3-19:  
 0000 hi-37 Russian  
 1348 Scranton, Wilkes-Barre  
 1440 KCA346, 1800 49.68  
 1855 50 bs CA  
 3-20:  
 1600 mid-37 US ne, 1915 low-46 Span.  
 3-21:  
 0000 low-38 Russian.  
 1350 35.03 " , 1537 KCA346  
 1915 49.6, 1940 45.25 N.Z.  
 3-22:  
 0005 low-37 Russian  
 1803 KCA695 33.78 Manchester,NH-f  
 1815 low-35 US, 1920 49.6  
 3-23:  
 1335 low-35 US  
 1431 KCA378 33.82 NewHaven,CT-f  
 1440 36 Canada, 1528 46.8  
 3-24:  
 1505 49.6, 1816 KOB238  
 3-25:  
 1405 low-35 US ?, 2305 49.6  
 2350 low-38 Russian  
 3-26:  
 1327 D.Welle, 1748 49.915  
 1815 35 US nw, 2350 45.25 N.Z.  
 3-27:  
 1810 35 US nw, 2005 49.80 se  
 2110 30.74/.75/.76 N.Z.  
 3-28:  
 1900 (apx) 35 US  
 2000 KH6IAA 50.1+ Hilo,HI-a  
 KH6NS, KH6EQI (Oahu)

3-28:  
 2100 ZLIACL 51.1+ Auckland,N.Z.-a  
 ZLIAVZ  
 2110 50.74/.75/.76 N.Z.  
 2200 49.6 se  
 3-29: (magnetic storm)  
 1955 49.6 se  
 3-30:  
 1555 mid-37 US ne, 1558 KCI299  
 1935 LU8DIN 50.1+ Mar del Pl.,Arg-a  
 2110 50.74/.75/.76 N.Z.  
 3-31:  
 1950 LU8AHW 50.1+ B.A.,Arg.-a  
 2110 45.25 N.Z. (1600, hi-33 US)  
 4-1:  
 1500 KUA288, 1720 KLF527  
 2125 50.74/.75/.76 N.Z.  
 2203 ZLIAVZ 51+, 2305 50 bs TX  
 4-2:  
 2100 49.955, 2340 45.25 N.Z.  
 4-3:  
 1615 35 US nw, 1905 49.6 se  
 2110 50.74/.75/.76 N.Z.  
 4-4:  
 0020 45.25 N.Z.  
 1240 KOE257 35.22 Phoenix,AZ-tp \*  
 1425 PY2XB 50.057 Sao Paulo,B.-a  
 (cw beacon)  
 1644-1742 50 LU4HLM,LU8DIN,LU8EEM  
 1858 KUA288, 2128 45.25 N.Z.  
 2130 46.25 Australia (TV video)  
 2225 50.74/.75/.76 N.Z.  
 4-5:  
 0310-40 CE3TS 50.1+ Santiago,Ch.-a  
 0400-45 CE4CP " Talca,Chile- "  
 1915 US 30-31  
 1935 LU8EEM 50.1 Lincoln,Argetina-a  
 2010-2125 50 bs TX,WA,MO  
 2050 KH6EQI, KH6NS, KH6IAA  
 2120 50.74/.75/.76 N.Z.  
 2140 45.25 N.Z., 46.25 Australia  
 2210 ZLIAVZ 52+  
 2215 ZL2CD 52+ Wellington,N.Z.-a  
 2250 51.75 Brisbane,Aust.(TV audio)  
 2330 VR4PU 52.05 Woombye,Aust.-a  
 4-6:  
 0000 YJ8PV 51.998 New Hebrides-a  
 (fsk beacon)

(a-amateur, f-fire, ha-harmonic,  
 he-hydroelectric, mp-mobile phone,  
 tp-tone pager, u-utility,  
 vp-voice pager)

ZS6 beacon heard in Japan & Dom.Rep.  
 PY1 beacon (50.004) into Greece  
 ZE (432) into Greece  
 52 Australia to Florida,Mexico,C.Z.  
 51 N.Z. to Puerto Rico  
 50 W5,6,7,VE7 hrd in Tasmania  
 50 Florida to Fiji  
 50 TX hrd in Darwin

73, Pat

WA5IYX

# IN SEARCH OF PSB

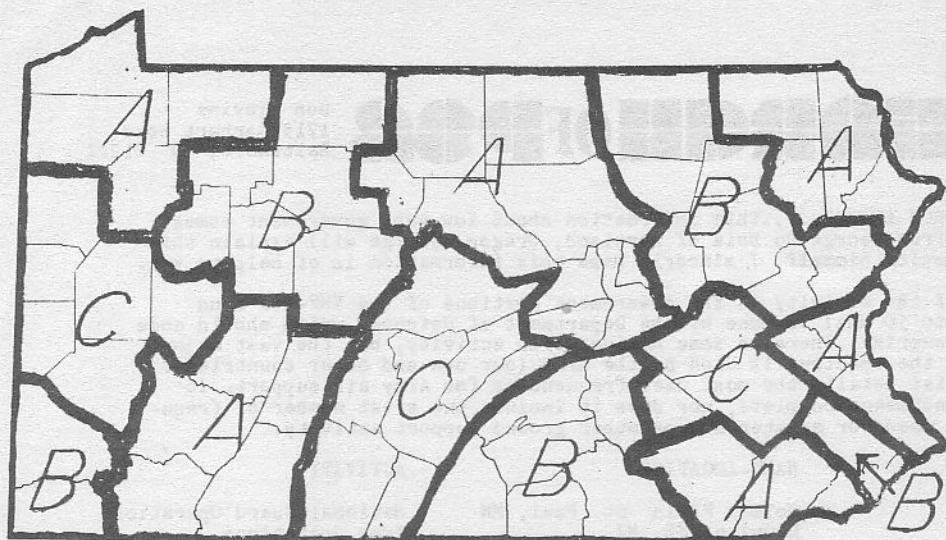
Don Blevins  
1715 Earhart Road  
Baltimore, MD 21221

IN SEARCH OF PSB....This information about low band government comes to us from George Du Bois of Portland, Oregon. George will explain this information himself. I sincerely hope this information is of help to you.

Most of the activity in the government portions of the VHF-low band (29.8 to 50 mhz) is done by the Department of Defence, which should come as no suprise. There is some Marine Corps activity, but the vast majority of the spectrum is used by the Army (our own and other countries). This list details the most used frequencies for Army air support. It is by no means complete, nor does it include the great number of frequencies used for maintenance or other ground support activity.

FREQ	NAME-LOCATION	ACTIVITY
30.25	Holman Field St. Paul, MN	National Guard Operations
30.50	McGuire AFB, NJ	Army Operations
31.20	Feucht AAF, West Germany	Army Radar
31.20	Finthen AAF, West Germany	Army A /G
31.80	Coleman AAF, West Germany	Army Tower
31.80	Furth AAF, West Germany	Army Tower
31.80	Grafenwohr AAF, West Germany	Army Tower
31.80	Hersfeld AAF, West Germany	Army A/G
31.80	Kirchgoens AAF, West Germany	Army Tower
31.80	Kitzingen AAF, West Germany	Army Tower
32.10	Robert Gray(Ft. Hood) TX	Army Tower
32.30	Grey AAF (Ft. Lewis) WA	Army Operations
32.50	Wildflecken AAF, West Germany	Army Range
33.20	Amberg AAF(Dofering) West Germany	Army A/G
33.20	Coleman AAF, West Germany	Army Radar
33.20	Erlangen AAF, West Germany	Army A/G
33.20	Fluda AAF, West Germany	Army Tower
33.20	Kitzingen AAF, West Germany	Army Tower
33.20	Wertheim AAF, West Germany	Army A/G
33.60	Finthen AAF, (Mainz) West Germany	Army Tower
33.60	Friedberg AAF, West Germany	Army A/G
33.70	Darmstadt AAF, West Germany	Army A/G
34.15	Springfield, OH	ANG "wolf cub"
34.50	Biggs AAF(Ft. Bliss) TX	Army weather
34.70	Indianapolis(Brookside) IN	AK Operations
34.80	Karlsruhe AAF, West Germany	Army Tower
34.80	Sabre AHP(Ft. Cambell) TN	Army Tower
35.00	Winder, GA	NG Operations
35.40	Hanau AAF, West Germany	Army Radar
36.20	Capitol City, KY	NG Operations
36.30	Hood AAF(Ft. Hood) TX	Army Range
36.50	Helena, MT	NG Operations
36.70	Biggs AAF(Ft. Bliss) TX	Army Tower
36.70	Lawson AAF(Ft. Benning) GA	Army Tower
36.80	Mueller Muni.(Austin), TX	NG Operations
37.00	Grayling AAF, MI	Army Tower
37.00	Troy Municipal, AL	Army Tower
37.40	Bad Kreuznach AAF, West Germany	Army Tower
37.40	Bayreuth AAF, West Germany	Army A/G
37.40	Fulda AAF, West Germany	Army A/G "Carlilse"
37.40	Heidelberg AAF, West Germany	Army Radar
37.40	Ludwigsburg AAF, West Germany	Army A/G
37.40	Schweifurt AAF, West Germany	Army A/G
37.50	Babenhausen AAF, West Germany	Army A/G
37.50	Furth AAF, West Germany	Army Tower

NG- National Guard ANG Air National Guard AK-Army Reserve A/G Air to ground AAF- Army Air Field AHP- Army Heliport



**PENNSYLVANIA-**

**Highway Maintenance**

Statewide  
 47.30 Base 47.38 Mobile  
 West 47.38 Base & Mobile  
 East 47.14 Base & Mobile

**STATE POLICE**

Base	Mobile
A 155.58	155.79
B 155.67	155.91
C 155.505	155.85
154.755 Car to Car	
42.60	Barrack to Barrack

**Thanks to:**

Craig G. Willard  
 G-33 Montgomery Court  
 Narbeth, PA 19072

\*\*\*\*\*  
 Kevin L. Slater 1167 Ring Street NE Salem, OR 97303 reports:

**Salem Memorial Hospital:**

155.34 KXC 851 Primary Ambulance and Fire rescue Mobile to Hospital Channel  
 155.385 KJJ 463 Paging only  
 155.40 KXC 851

**Salem Police Department:(both use morse code ID's)**

F-3 460.075 KTB 200 Main Channel Repeater  
 F-1 460.475 KVA 537 Auxiliary channel repeater

**Marion County Fire Channel utilization:**

South Marion County 154.415  
 North Marion County 154.16  
 Marion County Fire District #1 154.385

\*\*\*\*\*  
**Bryan Ross 128 Primrose Chatam, Ontario N7L 4N7 reports:**

Chatam City Police	142.185	Chatam Ambulance	150.10
Ontario Provincial Police	166.64	International Harvester:	
	168.74	Security	163.20
RCMP.....	42.84	Managment	457.7375
	41.82		452.725
Ontario Provincial Police	42.06	Stock Dept	475.60
	42.22		454.20

\*\*\*\*\*  
 Thomas J. Yingling, Jr. 221 Pinewood Road Baltimore, MD 21221 reports:

"It seems as though Virginia State Police are undergoing a change to VHF-High"

158.985 159.00 159.135 159.165.....most with repeaters, and simlcast with  
 old Low Band VHF.

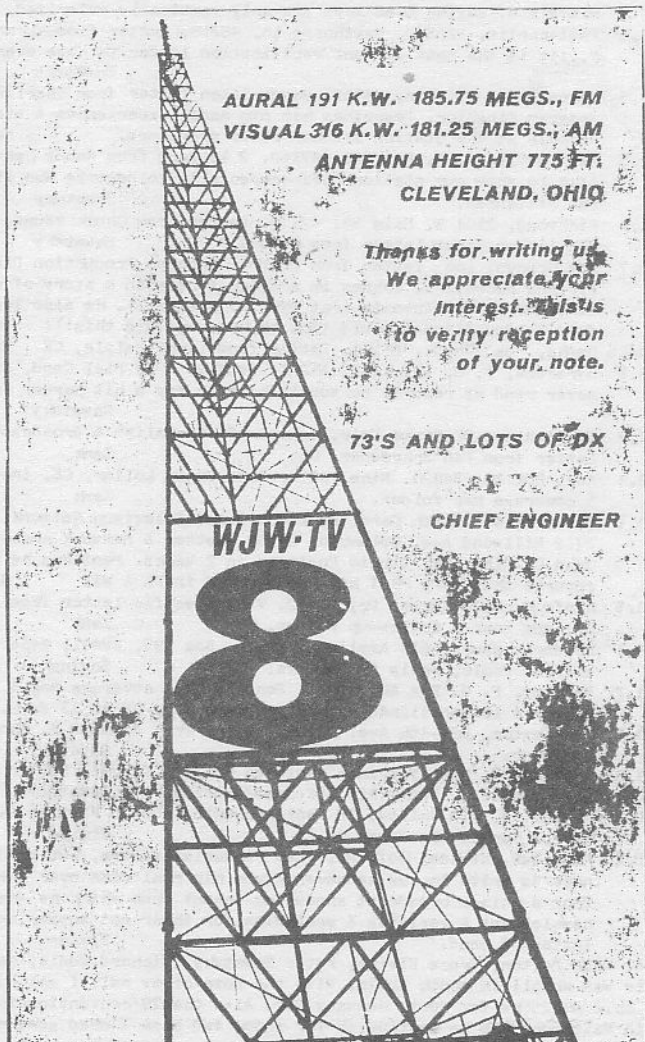


# Memorabilia

May 1979

Robert J. Williams  
251 6th Avenue East  
Twin Falls, Idaho 83301  
Phone: (208) 733-3621  
Deadline: 5th of month

This month, MEMORABILIA presents a grand old QSL card of WJW-8 (now WJKW-8) in Cleveland OH, sent in by Tom Yingling, Jr. Thank you very much, Tom! Mucho gracias!!!



That's it for this month, guys. See y'all in 30, amigos. 73s, gud BK,

Bob

# QSL CORNER

Thomas J. Vinsling, jr.  
221 Pinewood Road  
Baltimore, MD 21222

FM-QSL

- CO KRPO 95.1 Colorado Springs, Send letter in week from Ed Wittrock, Manager confirming reception. Also send a complete rate/ad folder. Dalton
- CA WSOJ 96.3 Jessup, Raymond B. Forehand, Manager verifies saying this was the longest distance they have been heard. Elvine
- NRBN 101.7 Warner Robins, Kevin Scott, Program Director, letter verifies, & makes the mistake of saying that they are only vertically polarized. Elvine
- IN WFMS 95.5 Indianapolis, 2255 W. Hawthorne Ln, 46218. Letter from Norman Phillips, CE "...it is the most distant verification letter we have ever received." Sawatzky
- WKFI 100.5 Kokomo, 304 N. Main, 46901. Handwritten letter from Charlie Cropper, Program Director. Describes his own radio experiences & state that several people at the station are ham radio operators. Sawatzky
- WMNH 102.5 New Castle, P. O. Box 690, 47362. 2 letters from Randy Henderson, CE "WE like to show our stations off--especially to people who listen to us from far distances." Sawatzky
- WRIA 101.3 Richmond, 2301 W. Main St, 47374. Letter from Chuck Yount, Chief Operator, "It is our first letter from Canada." Sawatzky
- NM KRWC 90.7 Las Cruces, Lon: letter from Fredric Dabney, Production Director, confirming reception. Dabney is a dx'er & related a story of a regular listener in San Antonio (Pat Dyer, I presume?). He also told of 2 reports from Newfoundland-I would like to know who did this!!! Dalton
- NE KOOO 104.5 Omaha, Box 17W.D., 68131. Letter from Larry Selye, CE Eddie
- NY WNTQ 93.1 Syracuse, P. O. Box 1212, 13201. Send me 4 FM Dial Card, obviously they never read my report, so you'll have to try a bit harder for this station. Sawatzky
- OK KOSU 91.7 Stillwater, OK State Univ, School of Journalism & Broadcasting, 74074. Letter from Dan Schroeder, CE. Zank
- KTEN 92.3 Ada, Box 10, 74820. Nice letter from James Lollar, CE, incuded rate card & coverage map folder. Zank
- SC WEPR 90.1 Greenville % South Carolina Educational Television Network, Drawer L, 2712 Millwood Ave, Columbia, 29250. Letter & network coverage map from John C. Rich, Sr. Studio Engineer in 2 weeks. Mentions he is an swl & reports that WMPR 88.1 has been heard in FL & WI. Sawatzky
- VA WCMS 100.5 Norfolk, 5600 Curlew Dr, 23502. Very specific letter from Jim Wadiak, CE, but took a follow-up report. Zank
- WFLS 93.3 Fredericksburg, 616 Amelia St, P. O. Box 597, 22401. Report signed J. William Poole, reply in 14 days. Sowinski
- WV WVPB 91.7 Peckley, P. O. Box AH, 25801. Send letter, coverage map & program guide. Report & letter signed by H. Leon Drye, Jr, CE in 12 days. Sawinski
- WKEE 100.5 Huntington, 623-4th Ave, 25701. Letter from Raymond R. Thompson, Chief Engineer. Sawatzky
- WVPM 88.9 Buckhannon, West Virginia Wesleyan College, 26201. Letter back in 26 days from Ronald E. Roth, Dir. of Broadcasting. Sawatzky
- WI WLSY 95.1 Marinette, Jim Callow, CE mentions using non-ID FM95 as the station identity except for hourly legal id. Elvine
- WMNH 95.9 Minocqua, Michael Hofmann, (Lee Michaels) writes, but wonder how I got his name to write to, as he never gives his real name over the air (I got it from a Chiago broadcast announcing school from which he graduated-their newsletter) & verifies & apologies for their not answering the 2 previous letters I send. Elvine

Reporters are: Mike Dalton, Bruce Elvine, Peter Sawatzky, Richard Eddie, Neil Zank, Robert Sowinski. This was an all fm month again. With one note of tv qsl, I got my second BEO-TV qsl back for ch.2 48.251hz for North Hessian Tor. Also the 79'convention is well into the making here in Baltimore, so be looking to for info. And also I need some more qsls reports to make this column go on without always having the same reporters report. 73's Tom

# ALASKA MINI-TV

by Rod O'Connor

An unusual aspect of television broadcasting is taking place throughout the great Northland, with the growth of small 10-watt TV stations. As of November 1978, there were over forty "MINI-TV" stations on the air, scattered throughout the state of Alaska. Upon taking a look at the accompanying map, one can see that most of the stations are located over remote North Slope, and Interior sections of the forty-ninth state.

Unlike commercial repeaters and translators, each Mini-TV station consists of a ten-watt transmitting unit. Each unit has had its receiver replaced with a modulator, which accepts base band audio and video inputs.

There are two separate systems of program origination. As of November 1978, twenty-two communities were receiving their programming via satellite. Four and a half-meter earth station antennas receive the satellite signal at each community. The satellite delivery system is funded by the state of Alaska, under a project to demonstrate the feasibility of satellite TV in remote sections. Most of the earth station dish antennas were originally installed for telephone communications, with the TV-receive capability added within the past few years.

The other system of program origination consists of individual stations receiving the programming through a system of video-tape recordings. The three-quarter inch "U-Matic" type cassettes are mailed to the communities from the Alaska Public Broadcast Commission, and played back over the local station.

For the DXer, identification of some of these stations can be very difficult. The tapes which are sent out to the local stations are recorded directly off the air from commercial stations in Anchorage, as well as from Public Broadcast Stations in Bethel and Fairbanks. It is very easy to confuse the Mini-TV stations with the many commercial translators operated by the Anchorage and Fairbanks commercial stations.

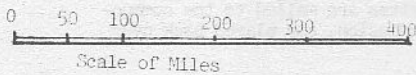
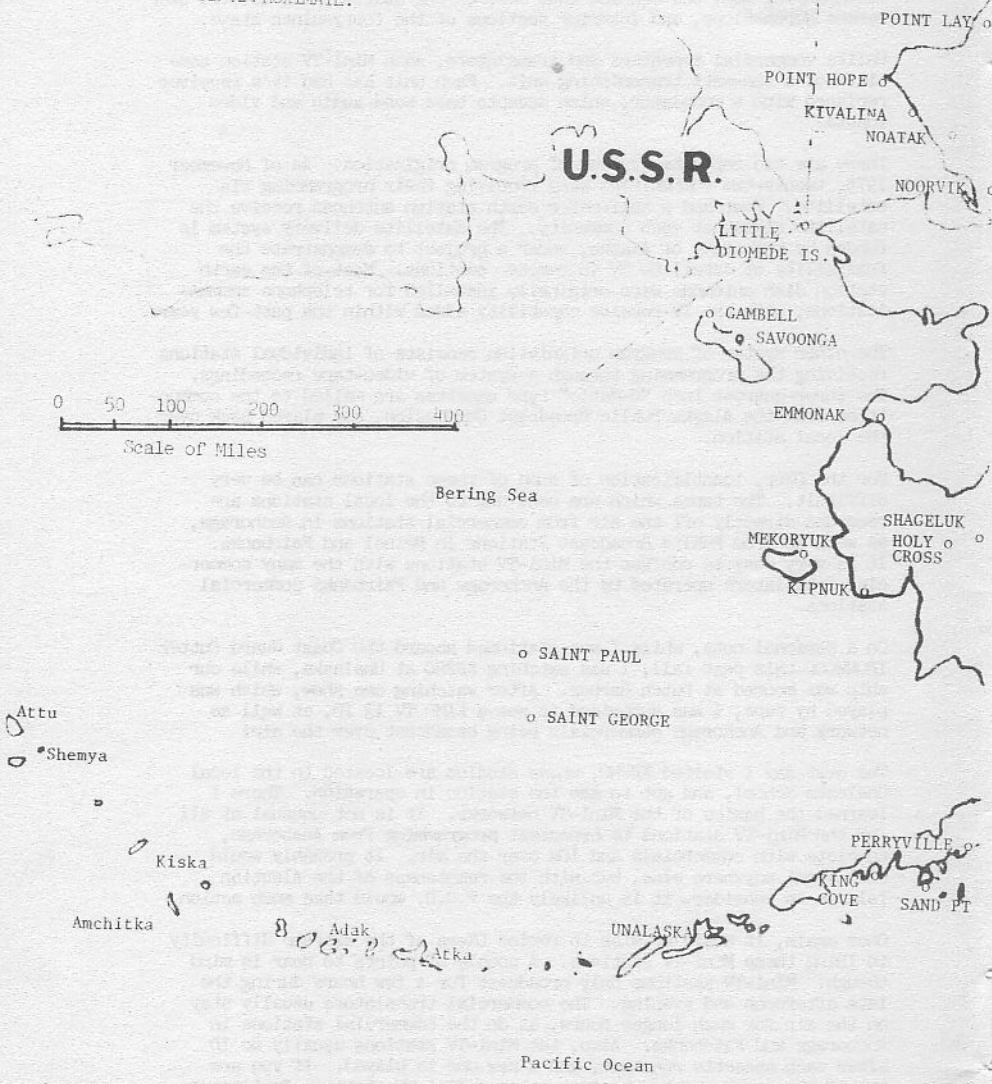
On a personal note, while I was stationed aboard the Coast Guard Cutter IRONWOOD this past fall, I was watching KØ2HO at Unalaska, while our ship was moored at Dutch Harbor. After watching one show, which was played by tape, I was surprised to see a KIMO TV 13 ID, as well as network and Anchorage commercials being broadcast over the air!

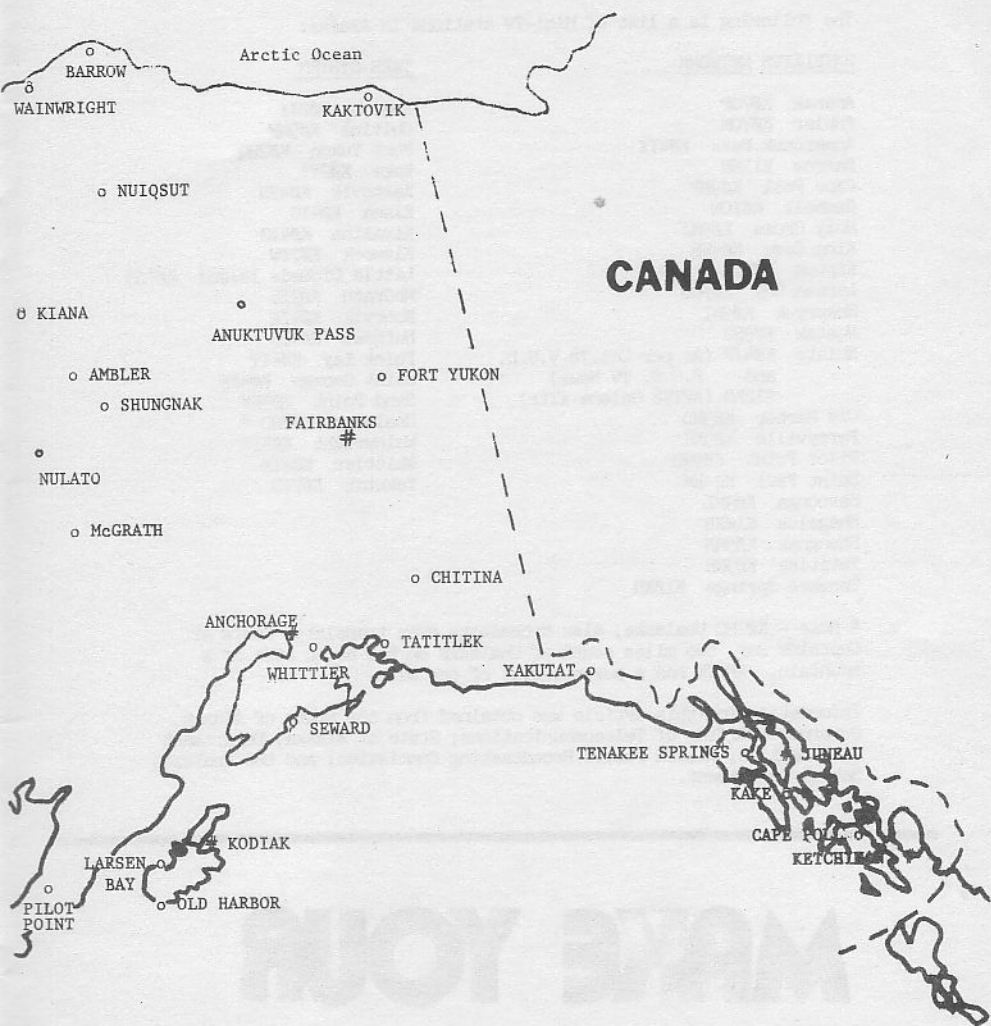
The next day I visited KØ2HO, whose studios are located in the local Unalaska School, and got to see the station in operation. There I learned the basics of the Mini-TV networks. It is not unusual at all for the Mini-TV stations to broadcast programming from Anchorage, complete with commercials and IDs over the air. It probably would be illegal anywhere else, but with the remoteness of the Aleutian Islands to consider, it is unlikely the F.C.C. would take much action.

Once again, it would be wise to remind DXers of the extreme difficulty in IDing these Mini-TV stations. A couple of points to bear in mind though: Mini-TV stations only broadcast for a few hours during the late afternoon and evening. The commercial translators usually stay on the air for much longer hours, as do the commercial stations in Anchorage and Fairbanks: Also, the Mini-TV stations usually do ID after each cassette runs out, and a new one is played. If you are one of the lucky people who does catch a Mini-TV station, feel proud that you have captured a rare station!

LOCATIONS OF ALASKAN MINI TV STATIONS

LOCATIONS OF STATIONS SHOWN ARE APPROXIMATE.





The following is a list of Mini-TV stations in Alaska:

SATELLITE NETWORK

Amanak KØ7OP  
Ambler KØ7CM  
Anaktuvuk Pass KØ4IX  
Barrow K11NN  
Cape Poll KØ9NP  
Gambell KØ7CN  
Holy Cross KØ9NJ  
King Cove KØ4HR  
Kipruk KØ7OL  
Larsen Bay KØ7OO  
Mekoryuk KØ9NI  
Noatak KØ9NG  
Nulato KØ4JF (As per Oct.78 V.U.D.  
and F.C.C. TV News)  
K12KS (AFTV8 Galena xltr)  
Old Harbor KØ9ND  
Perryville KØ9NK  
Pilot Point KØ9NO  
Saint Paul KØ4HM  
Savoonga KØ9HL  
Shageluk K1ØKH  
Shungnak KØ9NH  
Tatitlek KØ9NE  
Tenakee Springs K1ØRG

TAPE SYSTEM

Angoon KØ2JI  
Chitina KØ9NF  
Fort Yukon KØ2HQ  
Kake KØ2??  
Kaktovik KØ4IU  
Kiana KØ4IG  
Kivalina KØ4IG  
Klawock KØ2IW  
Little Diomed Island KØ7CS  
McGrath KØ2IE  
Noorvik KØ4IK  
Nuiqsut KØ4IS  
Point Lay KØ4IT  
Saint George KØ4IE  
Sand Point KØ4HV  
Unalaska KØ2HO \*  
Wainwright KØ4IR  
Whittier KØ2IM  
Yakutat KØ2ID

\* Note - KØ2HO Unalaska, also broadcasts over translator KØ8IW at Captains Bay, two miles south of Unalaska on the south side of a mountain. KØ8IW has a power output of one watt.

Information for this article was obtained from the State of Alaska, Governor's Office of Telecommunications; State of Alaska, Department of Education, Alaska Public Broadcasting Commission; and the Unalaska School Department.

---

MAKE YOUR  
CONVENTION  
PLANS NOW!

# DISCOVER NEW FM DX HORIZONS!

ONDAS FM is WTFDA's unique directory of FM broadcasting stations in Central and South America and the Caribbean. This publication is essential to FM DX enthusiasts in the U.S. South who are in E-skip and tropo range of any Latin American area, and makes a great reference for DXers in the rest of the North American continent who are ready for double-hop Es. With the increasing sun-spot levels, scatter propagation of FM signals from South America may soon be a reality. Be ready for it with your copy of ONDAS FM!!!

## ONDAS FM



**60 pages.**



only **\$3.00**  
from WTFDA

**With data on  
schedules and  
powers; includes  
maps!**

**Limited edition.  
ORDER SOON!**



**TOUGH  
TO BEAT!**

# WORLDWIDE TV-FM DX ASSOCIATION

Post Office Box 202 Whiting, Indiana 46394 U.S.A.

Established 1967

SERVING THE VHF-UHF DX ENTHUSIAST



DUES: U.S. and CANADA, \$11 (via first class); overseas, \$18 (via air mail)

The VHF-UHF DIGEST is the official publication of the Worldwide TV-FM DX Association. WTFDA is a non-profit organization and a member club in the Association of North American Radio Clubs (ANARC).

Persons contributing their efforts for the Worldwide TV-FM DX Association do so without any monetary compensation. Dues and all other revenue cover printing, postage, and other expenses.

The WTFDA is governed by a five-man board of directors, composed of Morrie Goldman, Mike Hogan, Pete Oprisko, Bill Thompson, and John Zondlo. ANARC representatives are Morrie Goldman, Pete Oprisko, and John Zondlo.

EDITOR-IN-CHIEF.....	Bill Thompson	COMPTROLLER.....	Gary Olson
PUBLISHER.....	Pete Oprisko	BOOKKEEPER.....	Bruce Elving
CIRCULATION.....	John Zondlo	PROCESSING.....	Dave Janowiak
DISTRIBUTION.....	Mike Hogan	LITERATURE.....	Morrie Goldman

S U P P L I E S and D X L I T E R A T U R E Available from WTFDA HQ.

REPRINT SERVICE.....Articles from May 1972 through 1978 are available.  
A complete catalog can be obtained FREE from HQ.

VUD Back Issues.....Available: January 1975 to present. 50¢ each

A PRIMER TO TV-FM DX: January 1978 special VUD issue \$2.00

BEYOND SHORTWAVE....An introduction to TV, FM, and VHF-UHF radio, written by prominent DXers. \$1.25

THE FM ATLAS AND STATION DIRECTORY (Latest Edition!)...An accurate and detailed listing of FM stations with maps and special articles, written by Bruce F. Elving, VUD FCC FM News editor. Also available at \$3.95 via 3rd class. \$4.50 via 1st class

EDUCATIONAL FM.....A comprehensive guide to the educational FM stations in the U.S., featuring schedules. \$2.00

ONDAS FM.....A guide to coastal U.S., Central and South American FM stations, featuring FM Atlas-style maps. English and Spanish articles. \$3.00

Club Rubber Stamp...Official WTFDA emblem, as at the top of this page, 37 mm in diameter. Order from Weldon Patterson-Box 25-Adolph, MN 55701 \$3.50

WTFDA Stationery....Features official WTFDA emblem, as at the top of this page, printed in blue on bond. 45 sheets \$1.00

DX Log Sheets.....Punched for a 3-ring binder. Great to keep DXers' running logs neat and orderly. pad of 100 \$2.50

VUD Boxers.....Attractive cases designed to keep copies of the VHF-UHF DIGEST organized. \$1.50 each

Station QSL.....For requesting QSLs (verifications) from Report Forms TV and FM stations. Offset printed, 50 sheets \$1.25

DX Column.....For reporting to the DX columns printed each month in the VHF-UHF DIGEST. FREE for a S.A.S.E.

All columns and feature articles to be printed in any VUD issue should be sent to editor Bill Thompson, 1907 Seneca Street, Buffalo, New York 14210. All information for VUD columns should be sent to the appropriate editors; all club business (supply orders, etc.) should be sent to HQ in Whiting.