

From The Staff :

WTFDA Headquarters, P.O. Box 97, Calumet City, IL 60409

SEEING IS BELIEVING...The Second Edition of the WTFDA TV STATION GUIDE is now available, and those who have received their copies are saying it was well worth the wait. Many orders have come in to club HQ, but if you want your own copy, don't wait too long to put in your order. Do it now, because chances are good that the club will run out of this popular item early, based on past history. Jam-packed with much more information than before, the GUIDE really is now the single most important reference available to the North American TV DXer. The special low price for WTFDA members makes it a true bargain--a real rarity these days! See page 32 of this issue for complete information on the TVSG.

CONVENTION TIME APPROACHING FAST...Will we see you at the 1981 WTFDA Convention? Make plans to attend now...July 31 is rapidly approaching. More details can be found on page 35. In the meantime, don't delay--use the Convention Form inserted in last month's issue, or send a S.A.S.E. to host John Zondlo, 1802 N. Rockwell, Apt. 107, Bethany, OK 73008. We hope to have details on the planned program in next month's VUD.

SKIP SEASON UNDERWAY...What again seems to have been a rather slow start to this year's major E-skip activity has nevertheless contained some very interesting openings. There does seem to have been a lack of good FM skip as of this writing--but as this is being written, it's probably too early to pass judgement on the skip season. This issue contains some reports of the super mid-April auroral DX openings, which reached into the deep South in the U.S.

BITS...Many thanks again to artist Harry Hayes for another humorous VUD cover...You may have noticed that some of the regularly scheduled columns have been missing lately; there are a variety of reasons, with some editors citing a lack of reports (we hope that situation is now ending), or time to do the column. More on this next month.

TABLE OF CONTENTS

MAILBOX: Mike Hollis comments on DXing in Korea.....	3
FCC TV NEWS: TV Table of Assignments available free.....	4
FCC FM NEWS: Lots of format and network info this month...8	
NEW KID IN TOWN: The LPTV situation, in detail.....	11
NORTHERN FM DX: Auroral induced E-skip in Manitoba.....	14
SOUTHERN FM DX: Rare auroral DX visits the South.....	16
SIMPLE MAST REINFORCEMENT: Or, playing with dowels.....	17
QSL CORNER: More TV QSL card examples.....	18
EASTERN TV DX: Lots of mid-April auroral activity.....	20
WESTERN TV DX: April 29 E-skip starts California season...24	
TECHNICAL TOPICS: A bit about FM DX antennas.....	25
IN SEARCH OF PSB: Lots of good northern Florida info....	26
A LOOK AT EUROPEAN TEST PATTERNS: From a British DXer....	28
FM STATISTICS: The latest Scoreboard, plus corrections...30	
JERROLD STO-82--THE BEST UHF BALUN: In a class by itself.31	
WTFDA TV STATION GUIDE: Announcing, the Second Edition!..32	



MAILBOX

John Zondlo
1802 N. Rockwell,
Apt. 107
Bethany, OK 73008
(405) 787-3717
Deadline: 5th

New Members:

James Carlisle 110 Harmony
Camilo Molina 2712 Jefferson Hwy.
David Nieman 12284 Nice Road
Scott Parker 5775 Kristin
Robert Stonier 467 S. Maple Ave.
Thomas Walsh 424 Baltimore Pike

Toledo, OH 43615
Jefferson, LA 70121
Akron, NY 14001
Beaumont, TX 77706
Glen Rock, NJ 07452
Springfield, PA 19064

Renewals:

Bob Coomler, David Curvin, Clinton Day, Pat Dyer, Richard Eddie, Jerry Franklin, Ronald Green, Christopher Hanley, Gerard Hart, Ken Onyschuck, John Robertson, Bob Seybold, Bob Umhoefer, William Welch, William Wild.

Rejoins:

Edward Cotton-4106 2nd St.-Chesapeake, VA 23324
W. Ryan-651 Battery St.-Victoria, BC V8V 1E7
Morris Sorensen-General Delivery-Amaranth, MB R0H 0B0

Address Changes:

Bob Coomler-Route 1, Box 22-Enterprise, OR 97828
Michael Hollis-102 Star St.-Enterprise, AL 36330
Frank Luman-6627 S. Cherry Way-Littleton, CO 80121
Robert Pantazes-229 E. Ridgewood Ave.-Absecon, NJ 08201

Renewals Due in July:

Jim Albrecht, Jim Alexander, Douglass Allen, John Barber, Jr., Gerald Barkow, R.S. Broadhead, Eric Cooper, Robert Curtis, Mike Dalton, Patrick Durkin, Jr., John Ebeling, Roger Gravelle, Mike Hardester, Bill Heusmann, Roger Horie, Tom Huehn, Tom Jackowski, James Laratta, David Letterer, Scott Levitt, Nick Lombardi, Mark Lucas, Fred McCormack, Ian Meyers, Alan Michalek, David Newkirk, Lonnie Nine, K. Noffsinger, Walter Patton, David Riley, Dan Samer, Curtiss Seaman, Gary Siegel, Dr. James Snow, James Sofonia, Ralph Strobel, Paul Swearingen, Doug Talley, Robert Williams.

Leading off the new members this month is DAVID NIEMAN. He's mainly into FM, with some interest in TV. His gear includes a Sansui G-8000 receiver and a Winegard SC-650 antenna mounted at 35' on an Alliance rotor. For TV, he has an RCA black and white set with a Winegard VHF antenna and a 5' UHF dish mounted at 32' on a Gemini rotor.

SCOTT PARKER uses a 50' crank-up tower with a Channel Master 7' UHF dish. He's also into shortwave DXing, using a Radio Shack DX-300.

Tidbits.....

Rejoiner Morris Sorensen passes along these words: "I have been DXing on all bands since the mid-sixties and was a member of WTFDA briefly in the early seventies. At present, I am engaged mostly in ECB and FM DX. I also have a special interest in monitoring radio communications (any mode or frequency) from the Arctic and sub-Arctic regions of the world. A teacher by occupation (grade 4 & 5 academics, 4, 5, and 6 physical education), I DX using a Panasonic RF-2800, a Hammarlund HQ-150 and several portables. I am also a member of NRC, CIDX, NNRC and the University of Manitoba DX Club.

Next up, we hear from Al Ellis: "Desperate for usable space, I am selling all magazines from way back. Gave all my earlier, various colored sheets of the old Dombrowski era to the local paper drive, but kept the pocket type VUDs till now. 1972 till the present (some are missing), total by guess weighs about ten or more pounds. Will weigh them should someone be interested. What am I offered? Am taking my collection of 73 Magazine to the first flea market held for amateurs this next season. It is either make room or move out of the room referred to as the den. Had to clear a space to put newly acquired sound equipment. By the way, I am not averse to SASEs being mailed me by any who inquire about them." Contact Al at 19 McClure Ave., Frantford, ON N3R 4L7.

(continued on page 34)



Bill Fahber
336 Atlantic Street
Bridgeton, NJ, 08302

Applications for Broadcast Stations:

St	Ch	ERP	HAAT	City/ Applicant
AZ	13	316	1031	Flagstaff; Manning Telecasting
	18	1196	3717	Tucson; Diocese of Tucson, R.C.Church
	"	3810	2012	" Alden Communication Corp.
	"	692	2001	" National Group Telec. of T'n.
	40	1549	2032	" Vallee Verdee Broadc. Corp.
CA	67	2306	2365	Monterey; Schuyler-Littlefield B'C'ng
DE	64	140	945	Seaford; Del. Citizens' Committee
FL	69	1775	1026	Hollywood; Family Television 69, Inc.
	"	2670	1016	" Golden East Broadcaster
	"	5000	978	" Christian Media of Florida
	51	1117	945	Ocala; Big Sun Television, Inc.
	25	5000	1025	Orange Park; Orange Park Florida TV
	"	5000	580	" Christian Communications
IL	24	124	319	Moline; Black Hawk College
IA	53			Des Moines; Neighborhood TV Co., Inc.
LA	29	700	333	Lake Charles; Hugh Van Eaton et al.
MI	8	316	714	Iron Mountain; John R. Powley
	64	201	498	Kalamazoo; West Michigan Family Comm.
MS	30	8	234	Meridian; TV-3, Inc. (maybe TV-30?)
MO	36	1012	841	Jefferson City; The FAB Foundation
NV	5	5	465	Reno; Channel 5 Public Broadcasting
	27	95	2300	Reno; Family Stations, Inc.
NH	50	4709	700	Manchester; Golden Triangle Broadc'g.
	"	1430	704	Derry; CTV of Derry, Inc. (Manchester assignment)
NC	16	4502	520	Burlington; National Group Telecomm.
ND	4	100	912	Williston; Prairie Public Television
OK	52	531	1518	Oklahoma City; TV 52 Broadcasting Inc
PA	56	10	626	Hazleton; Hazleton TV Associates
	38	31	1287	Scranton; SWH Associates
PR	18	3499	1136	San Juan; Three Star Telecasting, Inc.
TX	51	5000	1492	Irving; Irving Texas TV, Inc.
	25	2140	1020	Victoria; Community Broadcasting
UT	13	60	3901	Salt Lake City; Utah Telev. Associats

Applications for major changes in facilities:

IL	27	2570	772	Marion; WDDD-TV (are they on yet?)
MO	2		2000	St. Joseph; KQTV
SC	51	156	607	Myrtle Beach; WGSE

Applications to change city of license:

AL	21	WTTO		from Homewood to Birmingham
PA	33	WITF-TV		from Hershey to Harrisburg
TX	9	KPTX		from Monahans to Odessa

The above lists were taken from the Federal Register, various dates from January to March, 1980.

ATLANTIC CITY, N.J. FCC approved construction of 370-foot tower by WWAC, ch. 53, which hopes to begin 24-hour-daily broadcasting by July 1, 1981. The tower is being constructed at a sewerage authority plant (no reflection on the programming quality, I hope.). (Ref: Philadelphia Inquirer, April 5, 1979)

JUST OFF THE PRESS: Code of Federal Regulations (CFR), Title 47 (Telecommunications), Parts 70-79. The cost is \$7.50 in the United States, add 25¢ for foreign. This includes mailing. This book contains all Federal regulations and technical standards, with charts, for AM, FM, TV, SW broadcast stations, TV and FM translators and booster stations, and more. It also contains the complete Table of Channel Assignments with offset frequencies and noncommercial reservations. (For you FM buffs, it contains the FM channel of assignments with the various class FM stations.) This new edition covers all regulations up to October 31, 1980. Send to: Superintendent of Documents, U.S. Government Printing Office, Washington, D.C., 20402. Make checks or money orders payable to Superintendent of Documents.

TABLE OF ASSIGNMENTS FOR FREE! If all you want is a list of Television Table of Assignments, and you don't want to spend \$7.50, send me a self-addressed stamped envelope and I will send you a copy at no cost.

CORRECTION: I reported in last month's issue the assignment of 3- to Colorado Springs in Colorado. That should have read Glenwood Springs.

NATIONAL CAPTIONING INSTITUTE has been in operation for over a year now. (Not to be mistaken for the Caption Center in Boston, which captions the ABC News for PBS.) NCI is responsible for all the captioned programs which require a simple decoder box to be attached to the set. How does it work? If you adjust your vertical hold during a captioned program, so that you can see the entire vertical blanking line, (the black horizontal line), you will notice that the very last line (the black line consists of 21 lines of each scan; the line in question is the 21st line of scan one) consists of

CAPTIONING (continued)
about 15 half-inch segments constantly blinking on and off. The decoder converts this code into letters and superimposes the letters over the lower portion of the screen. NCI presently captions about five hours of programming for ABC per week, five for NBC, and about twelve for PBS. CBS has refused to cooperate in any way with NCI.

Instead, CBS has been working on a teletext system developed by the French government's Telediffusion de France. The "French Antiope Teletext System," which uses lines 15 and 16 of the vertical blanking interval, can display computer-based data over the entire screen of a television which is equipped with a special decoder. CBS, working with the Caption Center at WGBH-TV in Boston (which does the captioning for the ABC News shown on PBS, and not to be mistaken for NCI) is borrowing the equipment from the French government for tests which began on April 8 over KNXT and KCET in Los Angeles, which began on April 8, and are approved by the FCC to continue until the end of this year. In addition to a limited number of captioned programs (captioned for CBS by the caption center), another use of the system being put to work is a teletext magazine called EXTRAVISION, which contains eighty pages of a wide spectrum of informational services. The decoder can display these pages over the TV screen. (This is a composite summary of three related articles which appeared in Broadcasting, 3/16/81, 4/6/81, and 4/13/81.)

WNJU-TV IN LINDEN, N.J. is giving up its earlier plans to go STV; they are already quite successful as one of the top Spanish stations in the area. (Broadcasting 4/6/81)

LOST: ONE SATCOM SATELLITE; Finder please contact RCA Americom, Inc. Goes by the name of SATCOM III. Last seen on Dec. 6, 1980 on the launching pad. Meanwhile, RCA had to rent time from AT&T on another satellite to supply its customers' needs. But now the customers have to spend up to \$25,000.00 to build a new dish antenna aimed at COMSTAR D-2. They're also upset about having to wait until next year to get time on a new satellite to be launched in late 1981. Ted Turner's Cable News Network is threatening to sue RCA. (They could make a TV series out of this continuing drama, and call it Sitcom III; anyway, ref. Washington Star, 2/27/80, sent in from Greg Monti.)

BALTIMORE HAPPENINGS: WBFF-TV, ch. 45, wants to join the STV service, "ON-TV." But according to the FCC, there must be four non-STV stations serving a community before a fifth station be allowed to operate STV. Although Baltimore has only four stations, WBFF-TV claims that the Baltimore area is also served by several stations licensed in Washington, D.C. (This article puzzles me, since there are five stations in Baltimore, on channels 2, 11, 13, 45, and 67.)

Also in Baltimore, as was mentioned last month, was CBS's switch from WMAR to WBAL,

leaving speculation that WMAR would seek NBC affiliation. According to a Baltimore paper, NBC is already in contact with WMAR. Network changes are expected by Sept. 9, or as early as July 1. Articles sent in by Tom Yingling

CONSOLIDATED HEARINGS (cases in which there are more than one applicant for a channel.)
Mobile, Alabama; ch. 21; Alabama Orion, Inc. & Providence Journal Broadcasting Corp. Miami, Florida; ch. 39; Contemporary Broadcasting, Inc.; Florida Broadcasting Ministry, Inc.; 39 Broadcasting Co.; and Sun Belt Broadcasting, Inc.

Seattle, Wash.; ch. 22; Trinity Broadcasting of Seattle; Seattle STV Corp; Tavitac Corp.

New York, N.Y.; ch. 31; renewal of WNYC-TV which is under question; True Witnesses Ministries.

El Paso, Tex.; ch. 26; Superior Broadcasting Co.; Paso Del Norte Broadcasting Corp. Indianapolis, Ind.; ch. 59; Channel 59 of Indiana; Indianapolis Television Corp.; United Television Corp. of Indiana; Indianapolis 59, Inc.

Omaha, Nebraska; ch. 42; Christian Broadcasting of the Midlands; Pappas Telecasting, Inc.

Des Moines, Iowa; ch. 17; 220 Television; Greater Des Moines Vision, Ltd.; The Independence Broadcasting Corp; Columbia Iowa TV Ltd.

Portland, Oregon; ch. 24; Channel 24 Christian Television, Inc.; Tavitac Corp.; National Subscription Television of Portland, Inc.; Broadcast Associates, Inc.

Spokane, Wash.; ch. 28; Springfield Television of Washington, Inc.; Jus Dan, Inc. Portland, Maine; ch. 51; Crosby Family Telecasters; Comark Television, Inc.; Greater Portland Television, Inc.

Wichita, Kansas; ch. 24; Greater Wichita Telecasting, Inc.; Columbia-Kansas TV, Ltd. Medford, Oregon; ch. 12; Highland Communications, Inc.; Christian Broadcasting, Inc.; Sunshine Television, Inc.; Medford Channel 12 Limited Partnership; Channel 12 Associates.

CONSOLIDATED HEARING INVOLVING TWO EXISTING STATIONS: WBBH-TV in Fort Myers, Fla., and WCJB in Gainesville, Fla. both applied to the FCC to relocate their transmitters; both stations operate on ch. 20. Because granting both applications would cause short-spacing, only one of these can be granted.

NOTE TO READER: These consolidated hearings are cases in which the FCC has to select one out of several competing applications. Usually the selection is based on such issues as hiring practices, financial ability, minority ownership, criminal record or suspicious background of applicants or owners, etc. Hearings usually run several months before a decision is made.

CONSOLIDATED HEARING RESULTS:
St. Louis, Mo.; FCC granted C.P. to New Life Evangelistic Center for ch. 24
Concord, Calif.; FCC granted C.P. to First Century Broadcasting for ch. 42,

CANADIAN TELEVISION NOTES

According to the Canadian Allotment Plan, which is similar to the FCC Table of Assignments, stations occupying an assigned channel may operate at full power and are protected from interference, whereas stations on unassigned channels are not protected, and are limited to 5 watts (but does that go for UHF stations also?) Unlike the FCC table, many of the assigned channels are short-spaced, and therefore include power limitations to avoid interfering with other favored assigned channels. Since no power is available on new stations, I thought it best to divide these new stations into those occupying an assigned channel, and those not occupying an assigned channel, but caution that this may not necessarily be an indication of its actual power..

PROV	CALL LTRS	CH	BASE STN	LOCATION
Alb.	CBXFT-8	19z	CBXFT	Grand Prairie (f)
	CBXFT-7	34	CBXFT	Hinton (f)
	CBXFT-9	22z	CBXFT	Plamondon (f)
B.C.	CBUFT-4	4z	CBUFT	Prince George (f)
	CBCEB-TV-1	18z	CKPG-TV	Vanderhoof (e)
N.S.	CBHT-6	8-	CBHT	Middleton (e)
Ont.	CBLFT-21	23z	CBLFT	Gogoma (f)
	CBLFT-20	26-	CBLFT	Sault Ste Marie (f)
	CBLFT-18	12z	CBLFT	Thunder Bay (f)
	CBLFT-23	16z	CBLFT	Wawa (f)
Que.	CBMIT	28z	CBMT	Baie-Comeau (e)
	CBGAT-13	7-	CBGAT	Baie Comeau (f)
	CBST-11	8-	CBST	Harrington Harbour (f)
	CBST-13	4	CBST	La Tabatiere (f)
	CBMPT	11z	CBMT	Riviere-St-Paul
	CBST-16	21z	CBST	Riviere-St-Paul
SASK	CBCEP-TV-2	2+	CJFB-TV	Cypress Hills (?)
	CBKGT	45+	CBKT	Gravelbourg (e)
	CBKFT-6	39-	CBKFT	Gravelbourg (f)
	CBKFT-10	16z	CBKFT	Moose Jaw
	CBKFT-7	22z	CBKFT	Ponteix (f)
	CBKFT-8	21z	CBKFT	Willow Bunch (f)
	CBKFT-4	7+	CBKFT	St. Brieux (f)
Que.	CBQO-TV	28+	CHNB-TV	Temiscaming (?)
	CFEM-TV-1	10+	CHOT-TV	Lithium Mines (?)

STATIONS NO LONGER ON THE AIR

PROV	C.L.	CH	LOCATION
Alta	CKAB-TV-2	83	Crow Lake
	CKAB-TV-2	13	Maytower
B.C.	CFNV-TV-1	3	Camp Woss
	CHEL-TV-2	11	Sheringham Point.
Sask	CKBI-TV-4	7	Nipawin

CHANGES IN CHANNEL

PROV	C.L.	OLD	NEW	LOCATION
B.C.	CHTL-TV-2	12	6	Granisle
	CHKC-TV-2	11	6	Olalla
	CFOF-TV	11	2	Ocean Falls
Sask	CKBI-TV-3	3	4z	Greenwater Lk.
	CKSA-TV-1	12	8+	Meadow Lake

CHANGE CITY OF LICENSE

PROV	C.L.	NEW CITY OF LICENSE
Que.	CBGAT-6	6 St. Adalme
B.C.	CHWM-TV-1	4 Alta Lake/Whistler
	CFGL-TV-1	12 Gribbell/Hartley
	CHMH-TV-1	8 Massett/Haida
	CHCQ-TV-1	4 Mt. Poole/Sandspit
NWT	CFYK-TV-1	10 Rae/Edzo

NOTES ON CANADA'S ALLOTMENT PLAN: Presently, Canada's allotment plan still has channel assignments for channels 69-83, despite the fact that those channels have been removed from public use for television. The Canadian government is presently performing a complete overhaul of this plan to remove those channels and make the best use of the remaining channels.

CHANGE CALL LETTERS (all Brit. Colum.)

C.L.	CITY
CBCB-TV-2	6z Fort Fraser (CKPG-TV-3)
CBUIT-2	9 King Island (CHVT-TV-3)
CBUIT-4	11 Hagensburg (CHVT-TV-1)
CBUIT	7 Saw Mill Mt. (CFK-TV)

PROV	CALL LTRS	CH	BASE STN	LOCATION
Alb.	CBRT-15	27	CBRT	Cowley (e)
	CBRT-17	34	CBRT	Exshaw (e)
	CBRT-16	4	CBRT	Milk River (e)
	CBXT-8	4	CBXT	Plamondon (e)
	CBXFT-4	14	CBXFT	Red Deer (e)
	CBXAT-12	7	CBXAT	Wabasca (e)
CKSA-TV-4	12	CKSA-TV	Provost (e)	
CKSA-TV-3	8	CKSA-TV	Wainwright (e)	
CBXFT-9	22	CBXFT	Lac La Biche (?)	
CFJC-TV-19	12	CFJC-TV	Pritchard (e)	
CHEK-TV-2	11	CHEK-TV	River Jordan (?)	
CBNAT-14	10	CBNAT	Ming's Bight (e)	
CHSJ-TV-3	8	CHSJ-TV	Boiestown (e)	
CBAPT-14	12	CBAPT	Grand Falls (f)	
CHSJ-TV-4	69	CHSJ-TV	Parker Ridge (e)	
Ont.	CBLFT-24	7	CBLFT	Dubreuilville (f)
N.S.	CBIT-17	13	CBIT	Bay St. Lawrence (e)
Que.	CIVA-TV	12	CIVM-TV	Lithium Mines (?)
	CIVN-TV	8	CIVM-TV	Rouyn (?)
	CBST-10	9	CBST	Gagnon (f)
	CBGAT-9	4	CBGAT	Gros-Morne (f)
	CBMGT	12	CBMT	Fort George (e)
	CBMYT	7	CBMT (f)	Iles-de-la-Madeleine
	CBGAT-1	13	CBGAT	Lac-Au-Saumon (f)

PROV	C.L.	CH	BASE STN	LOCATION
Que.	CBRT-5	12	CBRT	Marsoui (f)
	CBMOT	12	CBMT	Matashanu Post (e)
	CBMOT	9	CBMT	Matashanu Post (f)
	CBMOT	18	CBMT	North-Louis-Er-Haut (f)
	CBMOT	12	CBMT	Nouveau-Compsoir (f)
	CBMOT	13	CBMT	Old Fort Bay (e)
	CBMOT	7	CBMT	Old Fort Bay (f)
	CBMOT	13	CBMT	Old Fort Bay (f)
	CBMOT	2	CBMT	St-Augustin-Saguenay (f)
	CBMOT	30	CBMT	St-Rene-du-Matane (f)
	CBMOT	8	CBMT	Ste-Anne-des-Monts (f)
	CBMOT	6	CBMT	Tebe-a-la-Paludie (f)
	CBMOT	6	CBMT	Weymont (f)
	CBMOT	3	CBMT	Beauvoir (f)
	CBMOT	26	CBMT	Bellefleur (f)

(e)=English (f)=French

FCC TV NEWS

CALL LETTERS APPLIED FOR: NEW STATIONS

AL WMCP-TV	45	Montgomery; X'n Life Broadc'g
FL WTKW	16	Key West; Key West Telev. Inc.
IN WXJC-TV	63	Angola; James A. Chase
MS WLHT	22	Hattiesburg; Central Telev.
MD WKJL-TV	24	Baltimore; Jesus Lives, Inc.
NC WUNM-TV	19	Jacksonville; Univ. of N.Car.
ND KDSE	9	Dickinson; Prairie Public Te.
OH WTLW	44?	Lima; American X'n Telev. Ser.
PR WRWV-TV	30	San Juan; La Fe Del Progreso
OR KECH	22	Salem; Greater Willamette Vis
WA KLRK	49	Vancouver; KLRK Broadc. Corp.
WV WRJK-TV	40	Bluefield; Channel 40, Inc.

CALL LETTERS GRANTED: EXISTING STATIONS

AZ KNAZ-TV	2	Flagstaff; KOAI
CA KTSF	26	San Francisco; KTSF-TV
KICU-TV	36	San Jose; KGSC-TV
KSEE	24	Fresno; San Joaquin Comm. Corp.
KBRK-TV	31	Sacramento; KMJV-TV (other ref. has new C.L. as KRBK-TV)
DC WCQR	50	Washington; WGSP-TV (on yet?)
GA WCGT	31	Albany; Gordon Comm. Corp.
WV WPBY-TV	33	Huntington; W.Va. Educ. Broadc.

CALL LETTERS GRANTED: NEW STATIONS

OH WTLW	44?	Lima; American X', Telev. Ser.
WA KLRK	49	Vancouver; KLRK Broadc. Corp.
WI WTMB-TV	43	Tomah; Tomah Television

TWO OTHER CHANGES which BROADCASTING somehow missed: WCMC, ch. 40 in Wildwood, NJ, is now WAAT as of April 27. WIIC-TV, ch. 11 in Pittsburgh, Pa. is now WPXI.

NETWORK CHANGE: WBOY-TV, ch. 12 in Clarksburg, W.V. is now NBC and claims to be doing better in their ratings than when they were ABC!

CONSTRUCTION PERMITS GRANTED BY THE FCC

FL WTKW	16	603kw 300ft	Key West; Key West Television, Inc.
IN	44	1313kw 970ft	Evansville; Family TV, Inc.

CHANGE IS FACILITIES GRANTED BY THE FCC

CO KDBI-TV	12	229kw 2416ft	Broomfield (or KDBI-TV?)
TX KTFX-TV	9	316kw n.c.	Monahans

CHANGE IN EXISTING FACILITIES; APPLICATIONS

AL WTTT	21	1042kw 1343ft	Homewood
MI WTVS	56	1850kw 959ft	Detroit
TX KTFX-TV	9	316kw n.c.	Monahans
VI WBNB-TV	10	5.68kw 1850ft	Charlotte Amalie (other references have WBNB-TV)

ADDITIONAL SERVICES AVAILABLE FROM FCC-TV

In addition to the free copies of the Table of Assignments, the following are also services for members of WTFDA.

A list of every application for a new television broadcast station published in the Federal Register since October, 1979, until December, 1980. (This month's column contains those from January to March, 1981). Send SASE. Throw on an extra stamp if you want the Table of Assignments also. Be sure you don't use small envelopes!

MORE CONSOLIDATED HEARING RESULTS: Tampa, Florida; FCC dismissed applications for ch. 28 by Tampa Broadcasting Corp. and Suncoast Telechoice, Inc; and granted construction permit to Family Television Corp. Spokane, Wash. (ch. 22) FCC granted application by Frontier Media, Inc., and dismissed application by Southwest Television.

I have plenty of information on translators and low power Canadian stations, none of which is worth printing (they would take up too much space and very few would ever be logged by a DX'er). But if you need information concerning stations in a particular area, or need an ID or location of a particular area, let me know.

Two new California stations testing their equipment in April are KFTY, ch. 50 in Santa Rosa, and KSTS, ch. 48 in San Jose. (report sent in from Peter Taylor.)

HAWAII TO GET MORE CHANNELS! As it now stands, 76-88 MHz (channels 5 & 6) and 98-108 MHz (FM channels 251-300) are reserved for inter-island communications instead of broadcasting. Bell Telephone, which used to be the only major user of those frequencies, no longer needs them, so the FCC is considering returning those frequencies to TV and FM radio. However in Alaska, where those frequencies are also reserved for other uses, no changes have been proposed yet.

MORE CANADIAN INFORMATION

CHANGES IN BASE STATION

PROV	C. L.	CH	BASE STN	FORMER	CITY
Ont.	CBWPT-7	2	CBLEP		Kenora
N.B.	CHCR-TV	4	CHCN-TV	CHSJ-TV	Campbellton
	CHCN-TV	4	none	CHSJ-TV	Newcastle/Chatham
B.C.	CBUIT	7	CBUT		Saw Mill Mt

NEW STATIONS (British Columbia)

C.L.	CH	BASE	CITY
CBUIT-1	13	CBUIT	Bella Bella
CBUIT-3	13	CBUIT	Bella Coola

This Canadian information, and information on the previous page is almost entirely from William Hepburn.

NEW STATIONS IN TEXAS: KBNB, ch. 33 in Dallas began broadcasting around Dec., 1980, using VEU subscription service in the evening. KTXA, ch. 21 in Arlington, is presently running old movies, but plans to go STV with ON-TV services soon; KTXA began broadcasting on Jan. 11, 1981. A third station is KTWS-TV, ch. 27 in Dallas, using PREVIEW's subscription service in the evening, and showing religious programs, game shows, and cartoons. (This information from Charles George, Dallas, TX, sent by Fred McCormack)

AURAL AND VISUAL TRANSMISSIONS: Previously, aural and visual transmissions had to be of related programming, except during equipment failures or tests, test patterns, etc. Effective 10/27/80, stations may, during normal non-operating hours (12-6 a.m.), transmit unrelated audio and video programming, or video only programming. This will allow stations to present news, weather, time, public affairs information, or non-entertainment material all night.

WANTED: comments, TV news, corrections of previous columns, etc. Send them in!!!



FM NEWS

BRUCE ELVING, PH.D., EDITOR
4515 AVENUE "E," KEARNEY
KEARNEY NE 68847, U. S. A.

NEW STATIONS GRANTED

AR Van Buren 102.3 3000 h.v.; 300'; mg
CA Placeville 92.1 890 h.v.; 520'; m
MD Berlin 103.9 2000 h.v.; 370'; rm
MI Hart 105.3 10000 h.v.; 410'
PA Creson 94.3 380 h.v.; 730'; km
MI St. Ignace 102.9 10000 h.v.; 375'; m, Mighty-Mac
WI Washburn 105.9 10000 h.v. (slightly directional
with minimum lobe 97000 watts); 740'; m (relay
BC Barriere (64 km N. Kamloops) 104.1 171 CBU /
BC Fort St. James 91.9 10 (48 km NW Vanderhoof)
CFPR AM Prince Rupert relay
BC Kenamo (80 km SE Kitimat) 97.9 44 w, CBC
via Anik Satellite

BC One-Hundred Mile House 91.3 1800; CBU relay
(One-Hundred Mile House is 64 km Nene Clinton)
BC Osyoos (64 km SSE Pentiction) 95.3 236
BC Shalalth (64 km W. Cache Creek) 95.1, 1 w,
CFPM 98.3 Kamloops relay
MB Flin Flon 90.5 550; relay of CBW (AM)
Winnipeg and CBWK (FM) 100.9 Thompson MB
MB Gillam (97 km WSW Limestone) 89; CJO B AM
relay -- to be on 97.1.

MB Little Grand Rapids (113 km ENE Jackhead)
101.5 300 watts; CBW (AM) relay.
PQ Camp Brisay 96.1 48 w; CKAC Montreal relay
PQ Camp Chaumont 95.1 50 w; CBF-7 relay
96.1 48 w; CKAC relay

(Above believed to be in James Bay area)
PQ Duplantar 99.1 200 watts; CKAC relay
PQ Camp Fontage 96.1 50 w; CKAC-James Bay area
PQ Camp LaGrande 96.1 49; CBF-7 Radisson relay
96.1 48 w; CKAC relay
PQ Camp LG-2 99.1 288; CKAC, James Bay area
PQ Camp L-6 99.1 477 w; CKAC relay
SA Cumberland House 94.9 115; CBK (AM), CBKA
(FM) 105.9 La Ronge relay; Cumberland House
is located 80 km WNW The Pas MB.
SA Pelican Narrows (97 km NW Flin Flon MB) 105.9
900 watts; CBK (AM) Regina relay
SA Prince Albert (130 km NE Saskatchewan) 99.1
100000; m; possibly to be stereo
NW Gjoa Haven 105.1 87 watts; CFFB AM Frobisher
Bay relay; Gjoa Haven is 161 km SW Spence Bay.

DELETIONS

CA Salinas KAUG *90.9
WI Milton WDMF *89.9 (unofficial)
MB Winnipeg CJUM 101.5 (official)

FORMATS/NETWORKS

AL Albertville WQSB 105.1 k (from rock)
AL Atmore WSKR 104.1 k, Mutual
AK Kenai KQOK 100.1 m, CA Shafter
AK North Pole KJNP-FM 100.3 m, KMGN 97.7 RT
AZ Flagstaff KNAU *88.5 UPI Audio
AZ Lake Havasu City KRFM 95.9 m, KROG 92.7 rock
AZ Tucson KNDE 95.5 k, CA Walnut KSAK
AZ Yuma KTTI 95.1 m, CBS, CA South Lake
AR Clarksville KLYR-FM 92.7 rk, Tahoe KRLT
AR Lake Village KLYA 95.5 k, \$, 100.1 AP Audio
AR Mammoth Spring KAMS, CA Stockton
AR Ozceola KHFO 98.1 l, g, KFMR 100.1 k
AR Warren KWR-FM 105.5 rk, CA Walnut KSAK
CA Fresno KSVJ *91.5 Lr; irregular hours on the air/
CA Long Beach KSLX *90.1, AP Audio
CA Manteca KNBS *90.3 rock
CA Mariposa KUBB 96.3 L (Spanish announcing?)
CA Mount Shasta (and Weed translator) KEDY 95.3
rock and mutual network
CA Riverside KHMY 92.7 NBC
CA San Francisco KP00 *89.5 mostly s; \$
CA San Mateo KCSM *91.1 now cj
CA Santa Barbara KTM5-FM 97.5 T
CA Santa Cruz KZSC *88.1 now on with increased
power (1250 h.v.; 470'), rock

CO Durango KDUR *91.9 p
CO Gunnison KWSB *91.9 u, OK Miami KORS
CT Middletown WESU *88.1 JDO.9 NBC
*WHS 104.9 S

FL Atlantic Beach WFYV 104.5 T
FL Big Pine Key WWUS 93.5 Y, OK PotEAU
FL Fort Pierce WOVV 95.5 T, KLUP 97.9 r
FL Gainesville WUFT-FM *89.1 P
GA Atlanta WZGZ 92.9 Y, OK Pryor
GA Columbus WCGD 107.3 RT, KMYZ-FM
GA Donalsonville WGMK 106.3 m, 104.5 rock
GA Fort Valley WQEZ 106.3 r
GA Greensboro WGRB 103.9 r (from kr), U
GA Savannah WSVH *91.9 l, cj, P
IL Arlington Heights WFVH *88.3 S
IL Chicago WUIC *88.1 A
IL Eldorado WKSI 102.3 rock
IL Geneseo WGEN-FM 104.9 k, "stereo 105"
IL Glenview WMMW *88.9 Mutual
IL Park Ridge WMTX *88.5 U
IL Quincy WQUC *90.3 mc
IL Rochelle WRHL-FM 102.3, km, monaural
IL Skokie-Chicago WGLR 101.9 now rock
IN Indianapolis WBOG *90.9 U, WFBQ 94.7 T
KS Dodge City KINF *91.9 rock
KY Corbin WYGO-FM 99.3 rock
KY Mount Sterling WMST-FM 105.5 rock
KY Paducah WDDJ 96.9 T

KY Princeton WPKY-FM 104.9 gr, S
LA Baton Rouge WBRH *90.3 rj
LA Lake Providence KLPL-FM 92.7 rk
LA Marksville KWLB 97.7 T
LA Moresauville KLIL 92.1 rock, OR Coos Bay
LA Slidell WAIL 105.3 T, KYNQ-FM
MA Boston WRBB *91.7 I, 105.5 A
MA Framingham WDJM *91.1 A
MA Pittsfield WBRK-FM 101.7 m
MA Sheffield WBSL *91.7 S, OR Corvallis
MA Springfield WAIC *91.9 A, KLOD-FM
MA Taubury WIRI 92.7 rock, 106.1 k, CBS
MI Ann Arbor WPAG-FM 107.1 r
MI Hancock WMP-LF 93.5 r (to be WZRK, \$)
MI Houghton WHUH 97.7 m, Stereo 98
MI Howell WHMI-FM 93.5 k
MI Ishpeming WMOT 107.1 rp (also translator
on 105.5 in Marquette), "D-107"
MI Monroe WVMQ 98.3 Mutual, OR Gold
MI Newberry WNBV-FM 93.5 m, Hill KRWO
MI Little Falls WYRQ 92.1 NBC, 100.3 k, S
MS Columbus WACR-FM 103.9 k
MS Holly Springs WKRA-FM 92.7 ks
MS Magee WSJC-FM 107.5 k, OR Newport
MS Winona WONA-FM 96.7 I, KNPT-FM
MO Bethany KAAAN 95.9 S, 102.5 m
MO Mansfield KTRI 95.9 m
MO Marshall KMFL 102.9 m (not k)
MO Marshfield KQSC-FM 104.9 m
MO St. Charles KCLC *89.1, E
MO St. Louis KB DY *89.9 js (off air)
MO St. Louis KSTG 97.7 rock, OR Portland KQFM
NE Gordon KSDZ 95.5 kr, U, 100.3 A (from T)
NE Lincoln KRNU *90.3 Y
NV Fallon KVLV-FM 99.3 m
NV Conway WMMV 93.5 rp
NY West Long Branch WMCX *88.1 p
NJ Henrietta WRHR *90.5 r
NC Belhaven WKJA 92.1 Y, OR Springfield
NC Cullowhee WNCU *91.7 rk, KSND 93.1 T
ND Bismarck KCND *90.5 c, P, PA Beaver Falls
OH Bellevue WNNR 92.1 Y, WGEV *88.3 A
OH Castalia WGMN 97.7 S, PA Huntingdon
OH Celina WCSM-FM 96.7 rk, WKVU *91.7 m
OH Cleveland WDSB *89.3 Y, WKVU *91.9 pj
OH Dayton WDAO 107.7 s (from disco)
OH Tiffin WHEI *88.9 s
OH Urbana WUHS *91.7 p, WCOM 101.7 rk

PA Lewisburg WMRF-FM 95.9 rock
PA Mansfield WNTT *89.5 S
PA Millhburg WMNC 98.3 M
PA Pittsburgh WRCR *88.3 A
WJ01 93.7 r (from m), top 40

RI Westerly WERI-FM 103.7 Y
SC Columbia WUSC *91.9 pj
SC Walterboro WALD-FM 100.9 k
SD Aberdeen KOAA 94.9 T
TN Chattanooga WDDO-FM 96.5 k (from rp),
no more D-96 nonID.
TN Covington WKBL-FM 93.5 k
TN Henderson WFHG *91.5 kr
TN Henderson WPKV 100.5 r, T
TN Lebanon WFMQ *91.3 mc
TN Lobelville WPCY 94.3 k
TN Lexington WZLT 99.3 k, "Z-99," not strict
TN Martin WCMT-FM 101.7 U
TN McKenzie WKTA 106.9 k
TN Milan WKBJ-FM 92.3 km
TN Signal Mountain WCSO *91.5 mj, S
TN Trenton WTNE-FM 97.7 m, \$
TX Big Lake K272AO 102.3 k
TX Crockett KIVY-FM 92.7 m, WV Huntington
TX Denton KNTU *88.1 j, WMUL *88.1 rj
TX La Grange KMVZ 104.9 k
TX Mc Allen XUMV 96.9 U
TX Muleshoe KMUL-FM 103.1 rock
TX Ozona KRCT 94.3 k, WI Dodgeville
TX Pleasanton KBDF-FM 98.3 k, WDMF-FM 99.3 S
TX Tackkarna KTAAL-FM 98.1 k, "K-98"
TX Refugio KYOT 106.3 j, WI Keweenaw
TX Rosenberg KFRD-FM 104.9 k, WAUN 92.7 M
TX San Angelo K8IL 92.9 Mutual
TX Slaton KJAK 92.7 T

UT Manti KMXU 105.1 m
UT Salt Lake City KISN 97.1 (and translators) T
VT Montpelier WNCX 96.7 rp
VA Appamattox WTTX-FM 107.1 k
VA Blackstone WBBW 93.5 k
VA Charlottesville WTJU *91.3 U
VA Lynchburg WWLC *88.3 cg, WI Richland
WRVL *90.3 g, Center WRCO-FM
WGOI 98.3 rock, 100.9 kr
VA Marion WOLD-FM 102.3 rk
VA Pennington Gap WSWV-FM 105.5 mk
VA Salem WJLM 93.5 I
VA Yorktown WYVA 94.1 U PR Aguadilla WTPM
WA Aberdeen KJMD 99.3 I, 92.9 S
WA Bellevue KZAM-FM 92.5 rock
WA East Wenatchee KTRW 97.7 mc; NE; \$
WA Seattle KBLR-FM 93.3 r, "FM-93," stereo?
WA Tacoma KUPS *90.1 rk
WA Tappanish KENE-FM 92.7 rock

SCA (67 KHZ) ACTIVITY

AR Jonesboro KF1N 107.9 SIT (AP news and
AR Radio Network)
CA Auburn KHVY 101.1 music and high frequency
X.
CA Los Banos KLSB-FM 104.7 TX
FL Fort Myers WINK-FM 96.9 music
HI Kailua KJVE 96.3 TX
HI Wailuku KA01 95.1 TX (subsided chirps)
IL East Moline WDLM-FM *89.3 TX
IL Effingham WCRV 95.7 TX
IL Olney WSEI 92.9 ft, main channel; rk, S
IA Cedar Rapids KTOF 104.5 TX, "Sunshine 104"
IA Centerville KMGO 98.7 TX, nonID; FM-99
KY Mayfield WKID 94.7 T (D-94)
LA Shreveport KROC 94.5 T m, nonID; FM-94
MA Springfield WTKC *90.7 T adds SCA
MO Kennett MTMO 98.3 T (from music)
MO Kirksville KRXL 94.1 TX
MO Poplar Bluff KJUE 95.5 T; Main: CBS, Z-95
NE Ogallala KOGA-FM 92.7 TX

NC Raleigh WQDR 94.7 occasional sports
NC Wilson WKYY 106.1 no SCA
TX Nacogdoches KRCC 92.1 same as AM, TMT
KJCS SCA "agree with your FM ATLAS,
including Spanish-language programming
on 1-hour, all TX state network."

VA Norfolk WNOF-FM 98.7 T music
VA Suffolk WFOG 92.9 T music
ON Toronto CKFM 99.9 T music

DUAL-CITY IDS GRANTED

CA Marysville KRFD 99.9 adds Yuba City
CO Colorado Springs K1LO 93.9 adds Pueblo
FL Leesburg WHLY 106.7 adds Orlando
NY Cortland WNOZ 99.9 adds Ithaca
PA Wilkes-Barre WKRZ 98.5 adds Scranton
PR Aguadilla WIVAF-FM *100.3 adds Mayaguez
NB Neguac 97.9 CBAF-22 adds Allardville

SLOGANS/NON-IDS

AR Conway KMJX 105.1 Magic-105 (strict)
IL Aledo WRMJ 102.3 J-102 (not strict)
IL East Moline WZZC 101.3 101-FM
IL Quincy WGEV-FM 105.1 Q-Country
IA Davenport K1IK 103.7 Kick
MI Marquette WUUN 100.1 Stereo-100
MO Gordonville KJAO 99.3 Q-99 NE Lincoln
NY Buffalo WPHD 103.3 103-FM KFRX 102.7
SC Greenville WFBC-FM 93.7 FM-94 no nonID
TN Lebanon WUSW 107.3 US-107 (was X-103)

FACILITIES CHANGES

AL Tuscaloosa WUAL *91.5 100000 h.v.; 520'
AZ Prescott KAHM 103.9 630 h.v.; 590'; Stereo
CA Chester K221AI 92.1 carries KSUE-FM 92.7
Susanville CA, not KSRN 104.5 Reno NV [FM
CA Chester K252AL 98.3 carries KSRN not KSUE-
CA Chualar KUBO *90.9 (from 89.7); to come on
air soon, takes over KAUG Salinas' dial spot (see
deletions) [Directional]
CA Los Angeles KKG0 105.1 17000 h.v.; 2970'; /
CA Modesto KBBE 103.3 20000 h.v.; 190'
CA Patterson KOSO 93.1 still believed to have a
directional antenna, as only 97 km from KYA-
FM San Francisco on 93.3; KOSO alt Mt. Oso!
CA Santa Cruz K228AH 99.5 (from K224AG 92.7)
CO Pueblo KTCS from 89.5 to *89.7 100000 h.v.;
1120'-fate of KAFA *89.7 Colorado Springs
unknown, as KTSC will throw a primary signal
right over KAFA's studios! I've written KAFA.
FL Pensacola (from Milton) WUWF *88.1 \$, cj, P
IL Bloomington WESN *88.1 100 h.v.; 120'
IA Muscatine KFHM *91.7 10000 h.v.; 245'
KS Colby KTCC *91.9 100 h.v.; 38'
KS Wichita KFDI-FM 101.3 1130' (100000 h.v.)
NE Bangor WHCF *88.5 11000 h.v.; 920'
NE Braddock Heights WZYQ-FM 103.9 350 h.v.; 910'
MN Duluth KDD5 (calls changing from KDD5-FM)
94.9 100000 h.v.; 700'
MN Willmar KQIC 102.5 100000 h.v. (830')
MO Farmington KTJL 98.5 1040' (100000 h.v.), 1T
(MO Network and UPI Audio)
MT Belgrade KMZK 96.7 210' (3000 h.v.)
MT Great Falls KOZ2 106.3 3000 h.v. (300')
NE Hastings KCNT *88.1 2300 h.v.; 180'
NE Scottsbluff KNEB-FM 94.1 100000 h.v.; 680'
NV Las Vegas KCEP *88.1 1400 h.v.; 120', soul
NJ Blackwood WDBK *91.5 100 h.v.; 81'
NY Afford WETD from 91.3 to *90.9 360 h.v.; 285'
NY Buffalo WADV 105.5 50000 h.v. (390')
NY Ogdensburg WPAK 92.7 2800 h.v.; 310', Stereo
NC Asheville WUNF-FM *88.1 110 h.v.; 870'
OH Medina WDBN 94.9 52000 h.v.; 610'
OK Tonkawa KAYE *90.7 from 90.5 1200 h.v.; 66'; r
OR Corvallis KLOO-FM 106.1 1140' (100000 h.v.)
OR Eugene KWAX *91.1 1015' (20000)
OR Portland KROD *90.7 30000 h.v.; 12500 v (800')
PA Palmyra WCTX 92.1 300' (3000 h.v.)
PA Philadelphia WKDU *91.7 110 h.v.; 99 v; 170'

TX Austin KAZI *88.7 1600 h.v.; 350'
TX El Paso KPAS 93.9 1210' (85000 h.v.)
VT Middlebury WCVM 100.9 250' (3000 h.v.)
WY Saratoga KLLK 99.9 30000 h.v.; 3430'
MB Brandon CJCM 96.1 10000 (1042)
ON Pembroke CBCO-52 96.7 10000
PQ Maniwaki CHGA (calls) from 95.7 to
97.3; 2880
PQ Sherbrooke "CBC" 92.1 25000

STEREO OR TO BE STEREO

AL Brewton WKNU 106.3, Mutual
AL Chickasaw WTUX 98.3
AZ Apache Junction KSTM 107.1
AZ Chandler KMLE 107.9, m
CA Atascadero K100 104.5, Mutual
CA Atherton KMAH *88.9, m
CA Carpinteria KARZ 101.7, 310 h.v.; 810'
CA Fowler KTED 96.7, Mutual
CA Holtville KGBA 100.1
CA Hoopa KIDE *91.3, e
CA Imperial KOZN 99.3, rock
CA Oakland KWLK 95.1, k
CA Peble Beach KSPB *91.9, rock, on with
115 h.v.; 470'
CA Redlands KUOR *89.1, jr
CA Roseville KP0P 93.5, now fulltime soul
CO Longmont KCDC *80.7
CT Hamden WDAQ *88.3, U
CT Hartford WRCT *88.3
FL Fort Myers WSDR 95.3 S
FL Fort Pierce WCGS *88.3, cj, P
FL La Belle WVHG 92.1
IL Lawrenceville WAKO-FM 103.1
IN Elkhart WVPE *88.1
IA Ames KPGY *91.9
IA Chariton KYRS 105.5, k
KY Greenville WGGY 105.5
KY Prestonsburg WDOO-FM 95.5, r, no SCA
ME Augusta WSLC 92.1 k, m
ME Biddeford WBVC 94.3, m
MA Greenfield WRSI 95.3
MA Springfield WNEK *97.5, I
MI Baytown WGED 97.7
MI Elie W0ES *91.3
MI Hastings WBCH-FM 100.1, k
MI Marshall WBL 104.9
MI Olivet W0CR *89.7
MN Benson KBMO-FM 93.5
MN Fosston KEHG-FM 107.1
MS Canton WQAB 101.7, m, B
MS Cleveland WQAZ 92.7
MS Lexington WMRR 106.3, k
MS Starkville WKOR 92.1
MS Jefferson City KJUM *88.9
MO Manett KKB 95.8, rock
MO Osage Beach KYLC 93.5, k
MT Sidney KZIN 96.3
MT Wolf Point KYZZ 92.7
NE Falls City KTNC-FM 95.3, m
NV Boulder City 105.5
NV Las Vegas KUNV *91.5 pj, some classical
NH Concord WEVO *89.1, cj, P
NH Bridgeton WMLB-FM 107.7
NJ Trenton WWMF *89.1, talk
NJ Vineland WKOV 92.1, mr, R
NM Farmington KNMI *88.9, M
NY Corning WKZK 106.1
NY Ellenville WDRS 99.3
NY Woodstock WDST 100.1
NC Thomasville WEYE 98.3
VA Amherst WCNV 107.9, k
VA Buena Vista WVDZ 97.7, m, S
VA Charlottesville WUVA 92.7, A
VA Crozet WCMZ 102.3 S, P
VA Louisa WLSA 105.5, S
VA Luray W0AA 103.9, WLCC 106.3, S
VA Richmond WDCS *90.1
WI Milwaukee WMSW *91.7, has vertical
WY Ethete KIEA *89.7, ethnic
WY Riverton KCWC *88.1, pm
NS Kentville CKWM 97.7 CBC-\$ network

CALL LETTERS ASSIGNED

AL Eufaula 92.7 WKOK (WLAZ)
CA King City 92.1 K1FA
AZ Glendale 92.3 KJUU-FM (KXTC)
FL Blountstown 102.3 WRTM, \$, k
FL Fort Lauderdale 106.7 WWJF (WENZ)
FL Mount Dora 107.7 WJYO (WDRJ)*FM*)
GA Millidgeville 102.3 WKXR (WVMV-FM)
IL Ava 103.9 WXAN
IL Chillicothe 94.3 WTXR (WCLL)
IN Paoli 95.3 WUME-FM (WUME)
KY Jeffersonton 101.7 WJVL (WZZX), m
LA New Orleans 99.5 WRNO-FM (WRNO),
the "FM" is because WRNO (AM) is a
shortwave station, possibly to come on the
air this summer.
ME Eastport *91.7 WSHD
ME Portland 97.9 WJBB (WJBB-FM)
MA Boston 100.7 WHUE (WHUE-FM)
MA Taunton 93.3 WSNE (WRML), R
MI Otsago 100.9 WAOP
MT Kalispell 98.5 KFZK
NE Mc Cook 103.1 KZKC-FM
NM Humble City 94.1 KWKK-FM (KYKK)
NY Corinth 93.5 WSCG
NY Utica 107.3 WRCK (WTB-FM)
OH Hamilton 103.5 WBLZ (WOKV)
OK Oklahoma City 102.7 KJYO m (KZUE),
K-Joy
OK Sallisaw KAZZ (KRRB-FM)
OK Tulsa 96.5 KRAV-FM (KRAV)
OR Corvallis 101.5 KEJO (KFLY-FM), r, A
SC Walterboro 100.9 WALD-FM (WKYP)
TX Abilene *98.1 KGNZ
TX Dibioll 95.5 K1PR-FM (KSPL-FM)
TX El Paso 96.3 KNEY-FM (KEZB)
TX Jasper 102.3 KWXY (KTXJ-FM)
TX Moab 98.7 KRND

Courtesy Greg Monti, Silver Spring MD, we received
lists of affiliates of two networks. Changes or new
listings for those networks are presented below.

RKO RADIONETWORK (R)

AL: Athens WZYP 104.3, Mobile WBLX 92.9 (not
southern any more) AK Fairbanks KAYY 101.1,
AZ: Phoenix KBBC 98.7, Tucson KNDG 99.5,
Yuma KJQK 93.1, AR: Fort Smith KXKI 100.9,
Walnut Ridge KCAZ 106.3.
CA: Eureka KPDJ 92.3, Fresno KFYE 93.7,
Sacramento KWOD 106.5, San Luis Obispo KZOO
93.3, CO: Lakewood KPL 107.5, Fort Morgan
KBRU 101.7, Gunnison KGUO-FM 98.3,
CT: Waterbury WWYZ 92.5, DC Washington WASH
105.7, FL: Bonita Springs WLIO 95.8, Jacksonville
WAV-FM 96.9, Fort Lauderdale WAXY 105.9,
Orlando WBWJ 105.1, Panama City WPFM 107.9,
Tampa WRBO 104.7, GA: Atlanta WVEE 103.3,
Athens WAGO 104.7, Augusta WZZW 103.1,
Savannah WAEV 97.3.
ID: Nampa KFCD-FM 97.9.
IL: Chicago WYFR 103.5, East Moline WZZC
101.3, Springfield WNNR 98.7
IN: Columbus City WKSY 106.3, South Bend
WRMR 103.9, Brazil WGOJ 97.7.
IA: Iowa City KFRQ 100.7, Meteorolo KCNB
105.7, KY: Bowling Green WJLB-FM 96.7,
Prestonsburg WPRT-FM 106.5, Henderson WKDO
99.5, Lexington WLAJ-FM 99.5.
LA: Alexandria KQCD 93.1, New Orleans WEZB 97.1,
Shreveport KFMF-FM 101.1, ME: Portland WGAN-
FM 102.9, MD Baltimore WMLP 92.3.
MA: Boston WROR 98.5
MI: Detroit WDRO 93.1, Battle Creek WKFR 99
103.3, Bay City WHNN 96.1, Clare WCX 95.3,
East Lansing WFMC 99.1.
MN: Mankato KEZ 99.1, MS: Jackson WZZQ
102.9, Meridian WJOD 101.3,
IL: Columbia WCBW 104.9,
MO: ST. Louis KSLQ 98.1, Wayneville KFB-FM
97.7, MT: Billings KYA 93.3, Great Falls
KNUIW 94.5, NJ: Long Branch WUUU 107.1,
NM Albuquerque KZZZ 99.5, Carlsbad KATK 92.9,
NY Albany W0MO 100.9, Buffalo WFXZ 92.9,
New York WYLO 98.7, Ithaca WBRB 93.5,
NC Charlotte WRQO 96.1, Winston-Salem WSEZ
93.1, Burlington WPCY 101.1, Bridgeton WSFL
106.5, Dunn W0TT 103.1, Sanford WFAJ 105.5,
Southport WLCE 107.1, ND Grand Forks KKDO
92.9. Continues next page

READERS' REPORTS AND COMMENTS

OH: Akron WKDD 96.5, Cleveland WDMT 107.9, Hamilton WSKS 96.5, Steubenville WRKY 103.5, Xenia WDJX 103.8.
 OK: Ardmore KIKR 92.1, OK Lake Oswego KMKK 106.7. PA: Johnstown WJNL-FM 96.5, Carlisle WZUE 102.3, Philadelphia WIOQ 102.1, Reading WRFY 102.5, Braddock WFFM 98.9, Sharpsville WGBZ 95.9.
 SC: Cape WZLD 96.7, Laurens WGLX 100.5, TN: Gallatin WWXK 104.5.
 TX: Amarillo KQIZ 93.1, Austin KHFI 98.3, Orange KIOC 106.1, Fort Worth KEGL 97.1, Odessa KOIP 96.9, Edinburg KBFM 104.1, Wichita Falls KKOV 103.3.
 UT: Salt Lake City KALL-FM 94.1.
 VA: Charlottesville WVVW 97.5, Norfolk WNOR-FM 98.7, Richmond WRVQ 94.5, Roanoke WXLK 92.3, Lynchburg WKZZ 100.1.
 WA: Seattle KPLZ 101.5, Spokane KDRK 93.7, WV: Huntington WKCE-FM 100.5, Morgantown WVAQ 101.9, WY Sheridan KRQE-FM 94.9.
 VI: Charlotte Amalie WBSF-FM 97.9.

THE SOURCE [OF NBC] (T)

AZ: Mesa KDKB 93.3, Tucson 96.1 KLPX.
 CA: Paradise KNVQ 96.7, Fresno KNAX 97.9, Redlands KCAL-FM 96.7, Sacramento KXOA-FM 107.9, Salinas KDON-FM 102.5, San Diego KGB-FM 101.5, San Jose KJSQ 92.3, Ventura KBBY 95.1, CO Denver KBPI 106.9.
 DC: Washington WKYS 93.9.
 FL: Fort Myers WDFX 93.3, WSWF 107.1, Atlantic Beach WFFY 104.5, Miami Beach WWVL-FM 93.9, Orlando WDIZ 100.3, Tallahassee WOOD 103.1, Clearwater WQXM 97.9, West Palm Beach WNSG 92.1.
 GA: Augusta WYMX 105.7, Gordon WIZY-FM 96.7, Savannah WSGF 96.0.
 ID: Boise KIDD 104.3, Pocatello KPKY 94.9.
 IL: Chicago WMET 95.5, Danville WDLN 102.1, Peoria WWCOT 105.7, Urbana WPGU 107.1, Winnebago WYFE 95.3.
 IN: Fort Wayne WKKE 103.9, Vincennes WRTB 96.7, IA Des Moines KDXI 93.3.
 KS: Topeka WIBW-FM 97.3, Hutchinson KSKU 102.1, KY Lexington WKQQ 98.1.
 LA: Lake Charles KBIU 103.7.
 MD: Baltimore WYBY 97.9, MA Worcester WAAF 100.3.
 MI: Lansing WLS-FM 101.7, St. Joseph WRX 107.1, MN Brainerd KLIZ-FM 107.5, MS Gulfport WZKX 107.1.
 MO: Kansas City KYYS 102.1.
 MO: Greenfield KRGP 93.5, St. Louis KADI-FM 96.3, St. Louis KADN-FM 94.9.
 NV: Reno KQZZ 106.7, Las Vegas KFMS 101.9.
 NJ: Blairstown WFMV 106.3, Pleasantville WGRF 98.3, Trenton WKXW-FM 101.5.
 NY: Endicott WMRV 105.7, Kingston WBFM 94.3, Rochester WVAQ 92.5, Schenectady WPGM 99.5, Syracuse WSYR-FM 94.5.
 ND: Bismarck KYYZ 92.9.
 OH: Athens WXTQ 105.5, Celina WKKI 94.3, Bellaire WOMP-FM 100.5.
 OK: Miami KORS 100.9.
 OR: Ashland KKIC 101.7.
 PA: Johnstown WGLQ 92.1, Mechanicville WQVE 93.5, Scranton WEZX 107.1.
 SC: Anderson WANS-FM 107.3, Greenwood WSCZ 96.7, SD Sioux Falls KKRZ 93.5.
 TN: Knoxville WMMZ 103.5, Memphis WZXR 102.7, TX: El Paso KLAQ 95.5, Houston KRBE 104.1, Lubbock KFMH 94.5, Fort Arthur KHYS 98.5, Tyler KTYL-FM 93.1, Waco KNFO 95.5, VA Lynchburg WGOE 98.3, NC Elizabeth City WMYK 93.7 (listed under "Norfolk").
 WV: Beckley WCIR-FM 103.7, Morgantown WCLG-FM 100.1.
 WI: La Crosse WJLW-FM 93.3, Marinette WLST 95.1, Milwaukee WZLU-FM 95.7, Oshkosh WOSH 103.9, Sun Prairie WMAA 92.1.

ABBREVIATIONS USED HERE

is stereo, h horizontal effective radiated power in watts, v vertical effective radiated power in watts, * is a noncommercial station, c stands for SCA and its codes. Program codes: 1 classical, d disco, e ethnic, g gospel, j jazz k country, L is Latin/Spanish, m middle of the road and easy-listening, p progressive rock, r rock in all its other forms, s soul, t talk. Network codes: A ABC-FM, with ABC standing for American Broadcasting Co., B National Black Network, C Columbia Broadcasting Company, E ABC Entertainment, I ABC Information, M Mutual, N National Broadcasting Company, P National Public Radio, R RKO Radio Network, S Associated Press Audio, T NBC, The Source, U United Press Audio, Y ABC Contemporary, Z Sheridan Broadcasting Network. 1M is SCA background music, TX is telemetry or teletype chirps on the 87 kHz SCA channel.

"I thought your column remarks excessive in April VUD regarding the fieldwork of..." is a sample of one response to my column-header of two months ago. While my comments may have been too defensive, I do not take exception to them. Indeed, they have evoked an outpouring of mail which has in part resulted in this being one of the most information-laden columns ever. John Zondlo points out Dallas Lankford and the RCMA as copy-righting all the information they send to club bulletins... another person points out an ego problem prompting copyrighting, but as publisher it seems strange a person would shell out \$10 for the privilege of protecting their ego. Anyway, it's refreshing we have a regime in club headquarters now that does not censor.

A blind listener reported on SCA reception using a modified G-E Superadio aboard an airplane. He found reception most interesting in CO, not much SCA activity over NE, and heard a four-way telephone conversation on the SCA of a station in IN-IL or MI. He claims listening to a portable radio aboard a plane with an earphone is usually possible, with airline employees either not knowing about it or not paying attention. WSRD 101.1 Youngstown OH now on with 3800 h.v; at its new tower with 1370'.

The Dow Jones Co. is planning a new FM-SCA radio news service, with news of business, corporate, financial and economic developments without commercials. Subscribers would pay \$25 a month for the radio to pick up "Radio II." No start date has been announced. The Commerce Dept. released a study showing many more FM stations could be started by use of terrain shading, directional antennas and spacing on the dial. Thus in Dallas-Fort Worth the number of on-air stations could be increased from 21 to 38—an 80% increase.

In Cabo San Lucas, Mexico Peter Taylor heard 99.5 and 100.1 Culican and Mazatlan briefly in six days there, but otherwise no FM. A local hi-fi store was surprised at even that reception. KENO-FM Las Vegas NV 92.3 has applied for a call letters' change to KMBO, and this has elicited lotsa local protest. So far no granting of the call change by the FCC.

Two readers sent articles from the April 12, 1981 newspaper supplement, *Parade*, "Where Courage Counts," a story about WMNR "88.1 Monroe CT, which hires out and helps handicapped young people. WMNR has stereo and vertical and an application for 10,000. R. Wood sent an article saying how Iceland State Radio, celebrating its 50th anniversary, is starting FM stereo transmissions over part of its network, and KADI-FM 96.3 St. Louis is building a new tower (actually with less HAAT and less coverage, but perhaps located in an area where more of its target audience lives) in an effort to bolster its weak ratings.

In Alaska, KAYY.101.1 Fairbanks went on the air April 4 to come on the air as that city's first commercial FM outlet. They ID as "Stereo K-101." Their HAAT is about min-us 100 feet, with Robert Fischer believing this a temporary transmitter location. On air 24 hours a day with a soft rock format in stereo. And the Associated Students of the University of Alaska want a drop-in frequency allocation for themselves.

Canada's AJ Ellis, owner of a giant FM receiving system with mammoth tower, can now enjoy WYSU *88.5 with its folk music program by Doc Darling much better, thanks to WYSU's reported 50000 watts and higher tower, although I have seen nothing official on this. Canada's Bill Heppburn says "Hope that you list Canadian FM stations again on next FM Atlas maps; just listing cities is no better than a standard road atlas."

The CRTC writes me that they are studying my suggestions that all Canada fm stations, including relayers separately identify. They also found my comments regarding SCMO of particular interest. "The CRTC has always considered the use of SCMO an excellent way to more fully utilize the limited number of FM frequencies which are available and encourages the further development of its broadcasting potential."

Two people reported success in nooking SCA to earphone jacks of TV sets to pick up the scrambled audio of STV. One used a SuperSnooper, now sold out and no longer available. The other used the SCA adapter inside his table radio, a practice not recommended because of shock hazard potential.

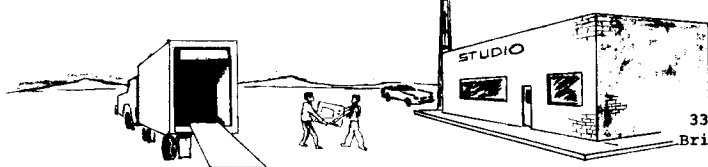
Heard testing: KIWR *89.7 Council Bluffs IA, with transmitter in Omaha NE. KIWR to be on 89.7, 100000 h.v, 1010', directional to protect KUSD-FM Vermillion SD. R. C. Mendelsohn sent a nice map showing FM transmitter locations in and near New York City. I found this feature helpful as a starting point for my new map projection on the New York City for the next edition. Watch for this exciting new map with its NYC FM dial guide! WCCO-FM Minneapolis' license is the target of a group of FM broadcasters on the IDS tower there that have had to cut back power to 50000 watts from 100000 watts because of WCCO-FM charges of interference.

CONTRIBUTORS

APRIL VUD: P. Boersma, Spring Lake MI; T. Caswell, Dunmore PA; Saul Chernov, Toronto, Ont.; J. Ebeling, Bloomington MN; C. George, Dallas TX; P. L. Gaines, Detroit MI; Bob Hempel, Manson IA; A. S. Lobei, San Diego CA; N. Lombardi, Atlanta GA; J. W. Mengelcarne, Altoona PA; E. P. Maletto, Johnsonburg PA; Sarge Miller, Palos Verdes Penn. CA 90274; G. Monti, Silver Spring MD; R. H. Perrin, Wells ME; Marty Rimoldi, Oakland CA; John Robertson, Crowell MI; J. Small, Ujica, IL; D. Walcutt, Houston TX; MARYJUNE VUDs: Boersma, Chernov, R. K. Clark, Puerto Plata, DR; J. Clemen, E. Molina IL; Bill Coleman, Jr., Rocky Mount NC; M. Cooper, Atlanta GA; M. Corcoran, Montpelier OH; Patrick Durkin, Jr., West Allie WI; John Ebeling, Bloomington MN; Joe Eisenberg, Lincoln NE; Albert H. Ellis, Brentford ON; William Felt, Willoughby OH; Robert Fischer, Fairbanks AK; Ted Feischaker, Louisville KY; Jerry Franklin, Fremont NE; Charles George, Dallas TX; Larry Hart, Los Angeles CA; Bob Hempel, Manson IA; W. Heppburn, Niagara Falls ON; John M. Jefferson, Pleasanton CA; David Legler, Houghton MI; Nick Lombardi, Atlanta GA; R. C. Mendelsohn, Hastings-On-Hudson NY; August J. Miller, Newark CA; Greg Monti, Silver Spring MD; Ken Onychuk, Park Forest IL; J. G. Pansauds, CRTC, Ottawa ON; Walter Patton, Montreal PQ (who sent much of the Canada news reported here); R. H. Perrin, Wells ME; Andrew C. Robins, Kalamazoo MI; Ken Simon, Lake Worth FL; Jerry Starr, WSRD Youngstown OH; R. Stern, Madison WI (who notes WBA-FM 101.5 has left progressive radio for "top 50 over and over!"); Also: Paul Wardell, Portland OR; Larry West, Acton MA; Peter V. Taylor, San Francisco CA; David L. Walcutt, Houston TX; Roger Windsor, Hobart IN; Dr. Richard Wood, Cape Girardeau MO; Joseph A. Young, Clara MI; John Zondlo, Bethany OK.

Your contributions help to make this column complete! Report often, and 73,

NEW KID IN TOWN



Bill Fahber
 336 Atlantic Street
 Bridgeton, NJ, 08302

Video Village began with a few television stations, and since then expanded into a metropolis with the coming of Color TV, cable TV, UHF, translators, satellites, subscription TV, video games, video cassette recorders, video discs, video libraries, etc. Although such recent projects as high resolution TV, 3DTV, stereo and bilingual TV are still afar off, Low Power Television (LPTV) is heading this way, and plans to make permanent residence here.

With the tremendous advances in TV media lately, the FCC concluded that the public is still hungering for more, and the technology and experience developed by translators over the years will provide the means of supplying that additional need.

The FCC's proposal for LPTV as described here (ref: *Federal Register*, 10/17/1980, pp. 69178-69194) will also affect translators to some degree. Also, remember that there are only proposals, and many changes will probably have to be made before LPTV legislation becomes a reality. In a sense, LPTV already exists, but only as a translator which has been given special privileges by the FCC.

The chief purpose of a translator is to rebroadcast simultaneously the signal of a full service broadcast station in an area where that signal is weak, yet not beyond the "Grade B" contour area. A translator may not originate any broadcasting material of its own (not even station ID), except for local emergency warnings and an hourly 30-second fund raising spot. Special provision has been made for some Alaskan translators to originate some local material. Recent experiments in translators involve rebroadcasting of TV signals relayed by satellite (The Spanish International Network is now doing this with a few translators, or satallators as they call them, in Denver, Colorado (KA2XEG) and Washington, D.C. (KA2XEH)).

The main difference between translators and LPTV lies in this area of program origination. LPTV may rebroadcast simultaneously any full service broadcast station, with permission from that station. If it wishes, a LPTV station could scramble that signal and lease decoders to the public. LPTV could rebroadcast several stations, delay broadcast material, become a network affiliate, or produce its own local programs. No limit will be set on the amount of time spent rebroadcasting, scrambling, or originating. They may not substitute their own commercials when rebroadcasting another station.

AVAILABILITY OF TELEVISION CHANNELS. Translators were originally limited to channels 70-83 before that band was reassigned to mobile radio. A few translators are still operating on those channels, but they began transmitting before the change. Presently, translators are to seek out an available channel in the less-crowded range from ch. 55 to ch. 69 before considering the lower UHF channels. VHF translators are prohibited in areas served by only UHF stations.

The FCC proposes lifting all restrictions except for the ch. 70-83 range, allowing a translator or LPTV station to pick whatever channel it wishes, on the condition that no harmful interference will occur with existing broadcast stations.

The key factor to keep in mind before licensing any broadcast station or translator is interference. While the TV DX'er is well familiar with interference between stations hundreds of miles away, the main concern is that one station's normal audience should be able to tune that station in without having to worry about another station making lines across the screen. Several methods are used to prevent harmful interference: (1) minimum separation, whereby two transmitters on the same channel, adjacent channel, or separated by a certain number of channels must be at least a certain distance apart. (2) Table of channel assignments, whose design is based on previously calculated minimum separations, (3) secondary status, whereby a translator interfering with a broadcast station must automatically shut down, (4) seniority, whereby a newer station must shut down or modify its transmitter if it interferes with an older station, (5) mutual agreement between two conflicting stations to eliminate the problem, (6) FCC action which will make a decision on the issue, and (7) equipment modification, altering either the direction of signal, antenna height, location or power, or channel.

SECONDARY STATUS. The FCC designed the Table of Television Channel Assignments in order to eliminate the chances of interference between two broadcast stations. Although no table of assignments will be established for translators and LPTV stations, they must still meet certain mileage separation requirements to avoid causing interference to the broadcast station. This is where the "A broadcast station, by definition, is a station which can originate as much of its own programming as it wishes.

secondary status comes in. If a translator causes interference to a broadcast station, the translator must immediately change its equipment, signal, or channel or cease operating.

Secondary status also means that the FCC overlooks the very existence of a translator when licensing a broadcast station. As soon as a new broadcast station begins, all translators causing interference with it must cease operating until they can make the necessary changes. Despite the fact that a LPTV station requires its own studio and licensed operators, the FCC proposal still gives secondary status to LPTV stations.

POWER: VHF stations east of the Mississippi River (used here as a geographic division between east and west) are allowed no more than one watt; VHF translators in the west may go up to ten watts. The FCC granted a few exceptions to this rule, and no interference has yet resulted in this lax ruling. UHF stations may go up to 100 watts on either side of the Mississippi. In cases where a translator occupies a vacant channel assignment, the only power allowed for VHF is 100 watts, and 1000 watts for UHF. In those cases, the translator must either be owned by an existing broadcast station licensee, or someone who has shown technical proficiency. The FCC proposes that all VHF translators be allowed up to 100 watts, and all UHF translators be allowed up to 1000 watts, and that the proposed LPTV stations also be allowed the same maximum power as a translator.

MINIMUM MILEAGE SEPARATION: The FCC requires that a UHF translator must be certain distances from full service broadcast stations that are certain frequencies apart because of various types of interference.

Stations less than six channels apart can cause intermodulation, and must be separated. Stations seven and eight channels apart need to be separated because of IF beat and modulation. Stations fourteen and fifteen channels apart must be separated because of sound and picture image. The minimum standards presently used are such that a translator operating at 1000kw would still not cause interference with a broadcasting station. The only restriction on VHF is that adjacent channels must be separated, and remember that channels 4 & 5, and channels 6 & 7 are not adjacent. This separation principle has hindered UHF translator development somewhat.

The FCC proposes that translator and LPTV applicants first strive to follow these separation standards in selecting a channel to transmit on. If no channel fits these standards, the applicant could produce a supplemental engineering study to determine if there is an available channel with allowable levels of interference. Applicants can also meet those tolerable limits by any combination of directional antennas, ERP, antenna height, offset frequency, or terrain shielding. Current studies of television receiver performance suggest a possibility of the FCC reducing some of the mileage separation

standards. Firstly, IF interference (8 channels above or below the transmitter's channel) is almost nonexistent unless you're next to a full power station. Oscillator radiation seven channels below the transmitter channel shows no cause of trouble. Nor does the sound and picture interference 14 and 15 channels above the transmitter channel. To illustrate, a hypothetical applicant on channel 40 must presently avoid intermodulation interference affecting stations on channels 36 thru 45; oscillator interference to stations on ch. 33 and 47; IF beat interference on ch. 32 and 48, sound image interference on channels 26 and 54; and picture image on ch. 25 and 55. A recent report to the FCC says that that applicant does not need to be concerned about any interference to channels 32, 33, 48, 54, & 55.

VHF translators do not follow minimum mileage separation, but rather abide by the "secondary status" principle. That is, any channel or location is free game unless it causes undesirable interference with an existing facility, in which case it must modify its station to correct the problem or else shut down. The FCC plans to continue this policy with translators and extend it to future LPTV stations.

INTERFERENCE BETWEEN TWO TRANSLATORS OR LPTV STATIONS: Presently, two interfering VHF must resolve the problem by mutual agreement, whereas a seniority system exists on the UHF channels. The FCC proposal for both VHF and UHF translators and LPTV stations is to correct interference problems by mutual agreement. If no mutual agreement is reached, seniority will prevail.

INTERFERENCE WITH CATV SYSTEMS: Presently a translator suspected of causing interference with a TV cable system must cease operating until the source of that interference can be determined, even if the translator is not causing it. The FCC, unhappy with this "whipping boy" approach, proposes that translators and LPTV stations may continue to operate until a definite connection with the interference is established. At such a time the translator or LPTV station and the CATV system are to resolve the problem by mutual agreement. If no mutual agreement can be reached the FCC will intervene. (the reference in the Federal Register also refers to a seniority system as a solution to a CATV-LPTV/translator fight.)

STATION IDENTIFICATION: There are presently three ways for a translator to identify itself. Most convenient to the TV DX'er is when the primary station gives a combined ID of itself and its translators. More subtle and undetectable are station ID's which are given by morse code keying of frequency shifts, or of amplitude modulation of the aural carrier. The frequency shift keying could be noticeable if there happens to be co-channel interference at the time. The FCC proposes one of these three methods be used by a LPTV station when it is rebroadcasting another station. When the LPTV station is originating its own program, the FCC proposes to require identification by a local

telephone number where a person responsible for the station can be contacted.

When will LPTV stations come into existence? In one sense, they already exist. Until the FCC creates a set of regulations, a low power applicant must apply for a translator license with certain low power features. The translators in Alaska which originate programming, the Spanish translators which rebroadcast a satellite signal, UHF translators using 1000 watts but not occupying a vacant channel assignment, these are all translators with low power features but none of them yet have all the freedoms that future LPTV regulations will allow. They are low power stations in a limited sense, but they still come under translator rules.

REACTION TO FCC PROPOSALS: The FCC insists that a full service STV station rent decoders instead of selling them, but does not plan any regulation which would forbid LPTV stations using STV to sell them. Wometco Enterprises, which operates WWHT and WSNL-TV in the New York area, both STV stations, in their response to FCC proposals, cautions the FCC that decoders sold to the public by LPTV stations would become useless should that station go off the air for financial or "secondary status" reasons.

ABC, CBS, and NBC all protested the FCC's proposal that would ban commercial network ownership of a LPTV station. They also objected to the idea suggested by the FCC to choose between conflicting applications by means of a lottery.

The National Association of Broadcasters (NAB) disagrees with another FCC proposal which would give preference in competing applications to minority ownership or control and to noncommercial applications.

PBS, the Corporation for Public Broadcasting, and the National Association of Public Broadcasting Stations, aware of the slow progress educational stations are making, fear that a sudden surge of commercial stations may hinder the development of noncommercial LPTV stations. They are calling for reserved channels for educational stations.

The National Translator Association suggests that translators and LPTV stations be removed from secondary status after operating for a certain number of years.

While many other comments have been made, thousands of applications have poured into the FCC. The vast majority of these are in conflict with one another, either applying for the same channel, or else applying for stations which would short-space each other. But out of these thousands the FCC is sifting out those very few which would be unaffected by the other applicants, and will be dealing with them first.

One of the applicants for the largest number of LPTV stations is proposing over 100 translators which will be linked by satellite to KUSK, Prescott, AZ. Residential Entertainment is applying for over 100 translators to rebroadcast WBTI, Cincinnati, OH, which is a STV station.

Bogner Broadcasting, a subsidiary of Bog-

ner Broadcast Equipment Corp, was a major applicant, applying for a network of stations to rebroadcast KTBN-TV, Fontana, CA, a religious station, using a satellite system. Bogner plans to experiment with circularly polarized antennas on these LPTV's. Also applying for a number of stations to rebroadcast KTBN-TV is Translator TV, Inc., a division of Trinity Broadcasting, the owners of KTBN-TV. A third group planning to build a network of LPTV's to rebroadcast KTBN-TV is Garcia Broadcasting.

Another religious organization applying for a large number of translators is American Christian Television Systems, Inc. They are a division of the Southern Baptist Convention.

Graphic Scanning Corp has applied for a large number of STV translators, but has not as yet named his satellite distributor.

CONCLUSION: Judging from the list of the major applicants to date, it appears that we can expect the majority of LPTV stations to be nothing more than satellite networks of STV systems, cable systems being aired, or what is coming to be known as the "Superstation," such as WTBS in Atlanta, Ga.

When the news of LPTV first hit the press there was talk of minorities, schools, special interest groups, local organizations, churches, or ethnic groups being able to have their own TV station at little cost. Indeed, those opportunities are now open, but I fear that most of them may wind up struggling to survive financially, and many will go bankrupt in a short time, in the end we may get to see very little in the way of local programming.

Don't expect LPTV stations to be spreading rapidly. The progress will be slow, and the FCC will need to make changes along the way just as it had for broadcast stations and translators. But remember that, like the new kid in town, there needs to be that period of adjustment before LPTV will feel at home.

LPTV UPDATE: Out of 4,748 applications for LPTV and translator stations, only 35 appear to be uncontested; another 43 might qualify. The FCC put an immediate freeze on accepting any more applications as of 4/9/81. The only applications being accepted are those (1) existing translators on ch. 70-83 which wish to change to a lower channel, or (2) to change channels to resolve interference with existing stations, or (3) new applicants in areas that currently receive less than two full service stations. Meanwhile, the FCC will be presenting new mileage separation standards for LPTV/translators; after these are adopted, acceptance of applications can resume. (ref: Broadcasting, 4/13/81, p. 28)

NORTHERN FM-DX

Ralph Strobel, editor
2510 E. McCalliard Rd.
Muncie, Indiana 47303
Deadline: the 10th

JUNE 1981

For FM DXers in Canada, the Northwest-Central states of WA OR ID MT WY ND SD NE MN IA MO and states east of the Mississippi River and north of the Mason-Dixon Line.

APRIL BROUGHT NO WORTHWHILE DX TO THE NORTH!

Morris Sorensen - General Delivery - Amaranth, MB ROH 080
Equipment: Panasonic RF-2800 w/telescoping "whip" antenna

This is my first report, as I just rejoined WTFDA after an absence of about six years. For several years, I lived way up in the northern part of Manitoba and never had any luck with FM DX except during visits to my parents home in Ontario during the summer. A few months ago, I moved to Amaranth (about 108 highway miles WNW of Winnipeg on the west side of Lake Manitoba), and things have really picked up. Of course, an unusually mild winter helped out. Unfortunately, I am unable to put up an outdoor antenna here. All stations listed are new for me at this QTH. Times are EST.

2/17 tr
2141 KEYA 88.5 ND Belcourt
2211 CITI 92.1 MB Winnipeg, "City-FM"
2/19 tr
2030 CJCM 96.1 MB Brandon
2200 CHMM 97.5 MB Winnipeg
2/20 tr
0030 KIZZ 93.7 ND Minot, "Z-94"
2/22 tr
2305 CBW 98.3 MB Winnipeg
2359 CKWG 103.1 MB Winnipeg, "CKWG 103"
2/23 tr
0000 CHIQ 94.3 MB Winnipeg, "Q-94-FM"
2/25 tr
0856 KYTN 94.7 ND Grand Forks, "Y-95"
2/28 tr
1200 KBTO 101.9 ND Bottineau
1357 CBWY 92.7 MB Jackhead
3/2 tr
1816 CBWX 95.7 MB Fisher Branch
1829 CBWZ 104.3 MB Fairford
3/13 tr
2310 KDUZ 97.1 MN Crookston, "Z-97"

3/14 tr
0013 KKDQ 92.9 ND Grand Forks
4/7 tr
1958 CKSB-8 99.5 MB Brandon
2002 CBWW 97.9 MB Brandon
2004 CBWW 105.3 MB Baldy Mountain
4/11 Es
2132 CIGE 102.3 PQ Trois Rivieres, my earliest Es on FM. Many other unID French lang. stations heard, several with election ads. French audio also QRMing CBWT-Ch. 6. Opening first noted around 2154; gone by 2208. MUF reached past 107 MHz at one point, but individual stations faded rapidly. Es was probably auroral-induced as a complete auroral blackout on CGB and lower SW frequencies followed the next morning.
4/11 tr
2228 KVOX 99.9 MN Moorhead, "Country-100"
(All stations new to log)
73,
Morris Sorensen

Neil G. Zank - 623 Lyncrest Dr. - Lincoln, NE 68510
Equipment: Pioneer SX-750, Archer 10 element Yagi with CD rotor at 45 feet.

The FM band is starting to come alive for me as I make my seasonal transition from MW to FM DX, with a little TV out of the corner of my eye. April saw my normal regional reception improve as expected, and three new loggings have been entered in my logbook since the first of this year.

3/30 tr
KIXX 96.1 SD Watertown,
(This due to demise of KEFM)
4/13 tr
KAUR 89.1 SD Sioux Falls
KQIC 102.5 MN Willmar

Not a lot of time spent at DXing yet, but am looking forward to increased activity, and possibly more Es opportunities this year.

Bob Zent - 1835 Fruit St. - Huntington, IN 46750
Equipment: Heath AR-1515, AR-1500, Channel Master 4408.

4/6 tr 2130 WAKU 88.5 DC Washington, (Phone in talk show. Topic: handgun control. No stereo pilot). 470 miles

4/25 GW 2200 WDHS 91.1 IN Gaston, (10 watts. Dead mono carrier. Confirmed by Ralph Strobel. Apparently this station is leaving the transmitter on all the time. This may be a good target for DXers who do much of their listening in the wee hours). 41 miles (Ed. note: WDHS was on for two weeks with a dead carrier, but went off air May 4.-RS)

NORTHERN FM DX

JUNE 1981

David J. Nieman - 12284 Nice Road RR 3 - Akron, NY 14001

This is my first report as a new member of WTFDA. I am using a Sansui model G-8000 receiver with an 11 element Winegard antenna 35 feet high on rotor. I've been FM DXing off and on since 1959. My total number of stations received to date is 554. The farthest station I've received is CHOZ-FM St. John's, Newfoundland 1455 miles on July 16, 1980. The tropics have picked up since the beginning of the month. The Detroit, Cleveland, Pittsburgh, Washington, and Philadelphia stations have been in much stronger.

3/26 tr	0210 CFWU 93.3 ON Guelph, s/off	109	4/14 au	0125 KCKN 94.1 KS Kansas City	870
3/27 ms	0120 WROE 94.3 WI Neenah	500	4/19 tr	0930 WVAQ 101.9 WV Morgantown	245
4/7 ms	0110 CHIQ 94.3 MB Winnipeg	1000	4/28 tr	0157 WARC 90.3 PA Meadville	125
4/10 ms	0130 KROA 95.7 NE Grand Island	1020	5/5 tr	0830 WWMD 104.7 MD Hagerstown	245
4/13 au	0122 WGE 97.3 VA Newport News	480		(new underlined)	
				I wish you the best of DXing, Dave	

Bob Hempel - Box 599 - Manson, Iowa 50563
Equipment: Pioneer SX-880, Zenith VHF antenna, CDE rotor at 40 feet.
Added Channel Master Stereo Probe 9 on Feb. 17.

This is my second report, the last being in October. Not too much activity except logging new stations. In this part of Iowa (North Central), we had a new public station go on the air (KTPR, 91.1 \$ cj - P), that has offered an alternative to a saturation of rock in Fort Dodge. Had a good signal one morning which played classical music and gave news and weather for New England...thought had good Es, but it was KSJR 90.1 Collegeville, MN carrying NPR satellite broadcast of WGBH Boston. All activity has been in a range of 350 miles from Manson. However, I've added 70 stations to my list since Oct. 1.

Those in the 300 mile range:

Oct 20 KCHW 90.9 MO Warrensburg, \$ c	311	Apr 17 WERN 88.7 WI Madison, \$ c	316
Dec 29 KDLO 96.7 SD Watertown, \$ k	300	Apr 28 KFSI 88.5 MN Rochester, \$ g, new	
Apr 15 WIBA 101.5 WI Madison, \$ c	316	May 4 WDLN 89.3 IL East Moline, #130	280

The Channel Master improved reception about 25 to 30% and has been great in helping receive 10w stations like KBBG 88.1 IA Waterloo, \$ s. (KBBG now 9700w h,v, 35 ft.-RS) Five days after receiving the Channel Master, static electricity from lightning knocked out the balun on top and cost \$30 for local repair people to put a \$3 balun on. Wife tells me that I am going to have to learn how to climb. Look forward to warmer temps for better tr's and E skips.
73 and good DXing, Bob

Robert S. Ross - VE3JFC - Box 4373, Stn. C - London, ON Canada N5W5J2
Equipment: Stoddart NMA-5 aircraft receiver and Marantz 2226-B with dipole at 130 feet.

4/1 tr	0212 CILQ 107.1 ON Toronto	4/3 tr	0244 WBBN 102.5 NY Buffalo
	0215 WDMT 107.9 OH Cleveland		0247 WMJC 94.7 MI Birmingham
	0228 WDOK 102.1 OH Cleveland	4/7 tr	0425 WHUG 101.7 NY Jamestown
	0234 WLVU 99.9 PA Erie	4/16 tr	0217 CFWY 102.1 ON Brampton
	0239 WGCC 103.7 PA Erie	4/19 tr	0350 WNIR 100.1 OH Kent, ex-WKNT
	0245 WACJ 104.1 NY Buffalo, ex-WWOR		0358 WQRS 105.1 MI Detroit
	0313 CHRE 105.7 ON St. Catharines, ex-CHSC		0401 WYDD 104.7 PA Pittsburgh
	0322 CHUM 104.5 ON Toronto	4/28 tr	0257 WWSK 106.7 PA Beaver Falls
	0328 WBBN 94.9 OH Medina		0259 WVCC 101.7 PA Linesville
	0400 WZPR 100.3 PA Meadville		0306 WYFM 102.9 PA Sharon- OH Youngstown
4/3 tr	0240 WLBS 102.7 MI Mt. Clemens		

From your editor: If you have never attended a WTFDA convention, I highly recommend this year's gathering in Oklahoma City, July 31 - August 2. Previous conventions I have attended proved to be educational and fun. After attending my first convention in 1978, I suddenly found myself greatly interested in this organization. This summer I will be driving to Oklahoma City and hope to see many of you there. 73, Ralph

SOUTHERN FM DX

Danny Buntin
1312 N. Skyline
Stillwater, OK 74074
DEADLINE: 10th

JUNE 1981

For FM DX reporters from: AL, AR, AZ, CA, CO, DE, FL, GA, KS, KY, LA, MD, MS, NC, NM, NV, OK, SC, TN, TX, UT, VA and WV.

THE AURORA BOREALIS PAYS A RARE VISIT TO THE SOUTH AND BRINGS SOME DX

On April 12, as many of you know but must have missed, an unusual display of the Aurora Borealis (Northern Lights) was viewed throughout most the South. It was so unusual that some scientists could not accept it for what it was and called it sunlight reflected off a cosmic cloud. But there was indeed dx attributed to the aurora for that night but by only one reporter. If you missed it the first time around, the next good time to try aurora dxing comes up during the September-October period when the next equinox occurs. The earth's geomagnetic field is more easily disturbed then, since the equatorial plane of the sun will line up through space with the earth's equator, giving solar particles a more direct path to the earth's polar regions. By late 1982, the chances for further intense aurora activity are to be much enhanced should scientific speculation come true. In late 1982 all nine planets are expected to move into perfect alignment. The combined gravitational influences may affect the sun by causing huge storms. The theoretical effects of this phenomenon is detailed in the Jupiter Effect. What this might mean for aurora dxing in the South is something we should remember to be in tune for to find out.

George Rogers, 320 Lafayette Rd., Chickamauga, GA 30707 - Feb. 16 to April 20
Equipment: JG Penney AM-FM radio model 680-1908, after Mar. 2 new GE Superadio 7-2880B

It has been a bad winter FM DX season. I went almost two months without FM DX until I went to Winchester, TN to visit some friends. Here's what I have:

2/16 tr (from Winchester, TN area)	
1200 WHUB 98.3 TN Cookeville, nx	
1203 WHOP 98.7 KY Hopkinsville, nx	
1205 WUTS 91.5 TN Seawannee	
1245 WAFI 94.5 AL Birmingham, m	
1300 WIZO 100.1 TN Franklin, ID	
1300 WCRQ 92.7 AL Arab, ID	
1305 WDRM 102.1 AL Decatur, k	
1313 WVNA 100.3 AL Tusculumbia, m	
1500 WRKM 102.3 TN Carthage, ID	
2/27 tr (Back in Chickamauga)	
1332 WOFM 94.9 TN Greenville, wx	193
1335 WFBC 93.7 SC Greenville, rp	210
2/2 tr	
0827 WHOP 98.7 KY Hopkinsville, nx	190
0850 WCRL 97.7 AL Oneonta, ad	110
0900 WZZK 104.7 AL Birmingham, k	145
3/17 tr	
1438 WJDQ 101.3 MS Meridian, ad	290
1440 WAIM 101.1 SC Anderson, "Rock-101"	195
3/22 tr, gw (heard from Atlanta, GA)	
1025 WRAF 90.9 GA Toccoa Falls	120
1030 W263AA 100.5 GA Conyers WMBWt, 10 wts.	
3/23 tr, gw, all t gw	
1555 W290AA 105.9 GA East Point WMBWt 10 w.	
1615 WHHY 101.9 AL Montgomery, rp	168
1620 WCUP 100.3 GA Tifton, m	182
1630 WHIT 102.5 NC Hendersonville, k	160
1635 WHKW 98.1 AL Fayette, r	190
1635 WLMI 92.3 AL Montgomery, k	168
2200 W298AA 107.5 GA Norcross WMBWt (gw)	
3/24 tr	
0900 WRES 105.7 AL Troy, nx	185
0910 WFKL 104.9 GA Columbus	108
0920 WCON 99.3 CA Cornelia, ad	100
0925 WICD 100.1 GA Statesboro, nr	200

3/24 tr	
0925 WLOV 100.1 GA Washington, k	140
0930 WELZ 100.1 AL Phenix City, ABC nx	115
(Back in Chickamauga)	
3/31 ms (previous by E-skip)	
1125 WADJ 93.7 MN Minneapolis	1008
tr:	
1850 WDDJ 96.9 KY Paducah, r	277
4/3 tr	
0805 WCRQ 92.7 AL Arab, r	110
0805 WKJS 92.7 TN Harriman, g	105
0930 WTLI 93.5 TN Lenior City, trading post	
0935 WGRM 97.7 AL Oneonta, M nx end	110
4/6 tr	
0859 WADI 95.3 MS Cornith, MS net nx	226
4/8 tr	
0845 WKOA 100.3 KY Hopkinsville	175
0900 WLJS 91.9 AL Jacksonville, ex 10w	115
2020 WLTU 95.9 TN Livingston, ad	110

4/12 Au	
2335 WFGC 95.5 MD Morningside, ad	505
2340 WWWW 97.5 VA Charlottesville, r	482
2345 WLAN 96.9 PA Lancaster, ad, #1368	660

4/13 tr	
0715 WFAP 29.5 FL Panama City, ad	298
4/14 tr	
1145 WSEZI 105.9 TN Memphis, ID	322
1205 WFFL 103.9 GA Blue Ridge, nx, rare	80
4/17 tr	
0735 WANZ 97.5 KY Louisville, k	303
0745 WUGC 90.5 GA Athens	140

4/20 tr	
2015 WYSH 104.9 TN Clinton	125
2020 WSEV 102.1 TN Seiverville, r	130
2035 WXPQ 96.9 TN Bristol, k	230
2040 WQUT 101.5 TN Johnson City, pr	220

SOUTHERN FM DX

JUNE 1981

Rick Samford, 404 S. McNeill, Burnet, TX 78611 - April 8 to May 6 CST

4/9 tr
0859 KBIM 94.9 NM Roswell, ad & ID
before local nx

4/19 gw
1901 KBGL 97.1 TX Ft. Worth-Dallas,
ex-KFJZ, still r, "The New Eagle-97"

The famous Gulf tropo which is normally with us this time of the year, has yet to really show up. I only picked up New Orleans once during the last month. Our recent wx seems to have been dominated by rain-producing low pressure areas which have stalled the tr development. The Northern Lights were visible in parts of south central Texas the evening of April 12, but I didn't get to observe (much less DX) this phenomena, which is extremely rare for this latitude, since I didn't learn of it until the next day. 73s, Rick.

Editor's notes:

No dx noted here since the nice tr opening on 2/25, which was dated incorrectly, not 11/25, in the April column. I heard what must have been aurora dx on April 12, but was in on it late and never heard a clear ID. Poor conditions have reached bottom here, but have nowhere to go but up with June and July just around the corner. With that in mind, I'm trying to redevelop the habit of checking for dx at early morning and early evening times. Are you doing the same?

Of interest to TV DXers, all concerning Tulsa, OK, KGCT-41 now on with 1350 kw, 1300' (1500' above average terrain). Ch 47 now has a permit and might be on by Christmas with all religious programming. Ch 2, 6, 11 all want to get off their old towers and jointly build a new one about 20 miles southeast of downtown. This would put all Tulsa TV in one small general area. Coincident with the tower move will be a swapping of channels between 11 and 2, 11 presently an OK ETV(OETA) channel. This scheme will solve adjacent channel interference still remaining when receiving a NBC affiliate (now Tulsa ch 2) in OETA ch 3's hilly local area. Viewers there have to use amps, which caused trouble when 3 became a local. OETA installed traps, but there were still complaints. This story in the Dec. 1978 VUD. With the channel change in effect 2 and 3, both being OETA, will show the same thing, so interference between the two won't matter. This still subject to FCC approval as far as I know. Some time ago I read in Mailbox about someone complaining about a streak running down their UHF picture. The same problem developed on the TV I use, in fact there were two streaks. As I learned after using spray cleaner, which took care of the problem, all that streaking is a sign of a dirty tuner. Until next month, 73.

SIMPLE MAST REINFORCEMENT

If you use the standard 1 1/4" steel mast for your antennas, you may have noticed that even the heaviest types of such tubes are not quite strong enough to cope with the larger antenna arrays--especially parabolic UHF dishes.

To be safe, be sure to use at least 16-gauge steel mast, preferably the seamless hot-dipped type, and nothing lighter. For added mast strength, try the trick that many amateur radio operators have used: insert wood doweling inside the mast.

This makes it difficult for a sudden gust of wind to bend the mast, while only slightly increasing its weight. The diameter of the wooden dowel should be roughly equal to the inner diameter of the mast. To find the right diameter of dowel for your mast, take a piece to your lumber dealer and have him find the size you're looking for.

While this method of mast reinforcement is not as effective as using solid steel shaft or heavier-type water conduit for your mast, it may save the mast from bending in a high wind--or even prevent the mast from snapping.

One final suggestion. Never use aluminum mast for larger DX antennas, unless you're prepared to reinforce it with doweling. It may be lightweight, but it bends--and kinks--much easier than steel mast.

There's no sense in spending a lot of money on a good high-gain DX antenna array, only to have it held up by a mast that may snap off at the rotor under severe wind conditions. Protect your antenna investment by reinforcing the mast.

QSL CORNER

TV-QSL's

- AR KETS 2 Little Rock, % 350 S. Donaghey, Conway, AR 72032. Letter from CE, Vernon L. Dillaplain (what a signature, No wonder Richard Eddie couln't understand it) Letter explaining my reception of KTEJ-19 id on ch. 2, reply came back in 13 days. He also mentioned that they're activating ch. 6 Mountain View by September 80'. Fahber
- IL WFLD 32 Chicago, 300 N. State St, 60610. Letter from Dwain Schoonover, Eng. Manger in 7 days. Durkin
- IN WTHI 10 Terre Haute, 918 Ohio St, 47808. Letter from Margo Boyll, Admin. Engineering in 11 days. Durkin
- IN WTHR 13 Indianapolis, 1401 N. Meridian St, 46206. Letter from R. L. Arendall, Manager of Engineering in 6 days. Durkin
- MA WWLP 22 Springfield, P. O. Box 2210, 01101. Rec'd large envelope with confirmation letter, station postcard, program scheduel, coverage map & copies of log of program I reported. Reply in 1 month. Quite a package!!! Letter from PR Director, Ronal E. Langevin. Schweitzer
- MD WJZ 13 Baltimore, TV Hill, 21211. Letter explaining that sunspot activity may have caused "unusual propagation phenomema", fact sheet on tv tower, coverage-map & business card from Bill R. Johnson, Assistant Mgr. Reply back in one week. Schweitzer
- MD WAPB 22 Annapolis, 1690 Hawkins Rd, 21091. Send back my letter wrote on the bottom "Right-Thanks", unreadable signature, reply in 2 weeks. Schweitzer
- MD WMFB 67 Baltimore, % Maryland Center for Public Broadcasting, Owings Mills 21117 Letter & booklet from Bruce T. Herget, Dir. of Eng in 2 weeks. Schweitzer (best to send to main station in Baltimore for reply, ed.)
- MI WOTV 8 Grand Rapids, 49502. see copy Durkin
- MI WKZO 3 Kalamazoo, 590 W. Maple St. see copy Durkin
- MI WZZM 13 Grand Rapids, TV Center, Box Z, 49501. Unsigned card in 7 days, see copy. Durkin
- MI WGVG 35 Grand Rapids, 301 Manitoie Hall, Allendale, 49401. Letter from Bradley F. Morgan, Ass't CE in 4 days. Durkin
- MN WCCO 4 Minneapolis, 50 S. 9th St, 55402. Typed letter by Henry F. Sheppard, CE with reply in 16 days. Fahber
- NC WGHF 8 High Point, 400 N. Main St, P. O. Box 2688, 27261. QSL note, no date, or anything, signed by Ross Mason (ce?) Reply in 2 weeks with a bumper sticker enclosed. Fahber
- NY WNYE 25 New York, 112 Tillary St, Brooklyn, 11201. Received note on bottom of my letter, "Pardon the delay. That was our station." no signer, sase used reply in 5 months, 19 days. Wolf
- OK KOTV 6 Tulsa, 302 S. Frankfort, P. O. Box 6, 74101. Letter signed by S. Johnson, no title, also send program schedule, pencil with KOTV on it, "Trapper John, MD Jiggers Medic" card (first aid info, & returned my sase, came in large envelope in 18 days. Wolf
- VA WARA 15 Roanoke, 1215 McNeil Dr. SW, 24032. Brief letter from E. V. Rexrode, Jr. Executive Vice Pres. & Gen. Mgr. sase used in 7 days. Wolf
- WY KWTO 2 Casper, 4200 E. Second St. Card from Steve Broomell, CE Reid

Reporters this all TV month are: Bill Fahber, of Bridgeton, NJ; Patrick Durkin of West Allis, WI; Robert E. Schweitzer of East Brunswick, NJ; Jeff Wolf of Silver Spring, MD; & Mike Reid of Willowdale, Ont. This month's qslcopies come from Patrick Durkin of TV QSL's. A note from Saul Chernos says- If anyone is having trouble to get stations in the General Toronto Area, send the letter to him, and he will get your report veried, if they are correct. Send to 79 Ridge Dr, Toronto, Ont. M45 1B6. Stations not QSL'ing are CKEY-590, OECA TV Net, CHIN-am/fm & others. Send a stamp for it may help out more. Send a letter to Saul for more details. I hope this may help the members alot for their QSL Collection. My many thanks to this month's QSL Reporters, keep it up.... 73's..... Tom

Thomas J. Yingling, jr.
221 Pinewood Road
Baltimore, MD 21222
Phone # 1-301-282-5649

WOTV VERIFICATION

This is verification on your report

on January 24 of 1981

Grand Rapids, Michigan 49502

WOTV

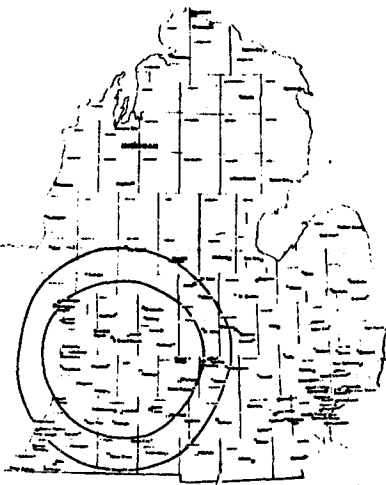
Channel 8

282 KW Visual - 56.2 KW Aural

RCA Transmitter TT 25 DH

RCA TW 18 Antenna

R.C. Smith
Asst. Chief Engineer



PLACE
STAMP
HERE

POST CARD

Address

Patrick Durkin, Jr.
88 29 W. Orchard St.
West Allis, WI 53214

This will serve as verification of your reception of WKZO-TV on February 14, 1981 as outlined in your recent communication. We hope you will be able to pick us up again soon.
Deborah M. Hethel
Engineering Department
WKZO

WZZM-TV

CHANNEL 13 • TELEVISION CENTER
GRAND RAPIDS, MICHIGAN



Confirming your reception

report of 14 FEB 1981 at 2:25 PM EST

~~XXXXX~~

VIDEO 316KW ERP
AUDIO 63KW ERP
TRANSMITTER - G.E.
TOWER - 991 FEET ABOVE GROUND
1783 FEET ABOVE SEA LEVEL
ANTENNA - G.E. HELICAL



EASTERN TV-DX

William J. Draeb
Ellis St. R.R.#2
Kewaunee, WI
54216

Eastern TV-DX

June 1981

Eastern TV-DX

Deadline: 5th

Not much DX observed here during the past month. It would seem the situation would be the same over the NE 1/4 of the country because of the below normal temperatures. About the only interesting thing that was seen was on 4-12 & 13 when Au activity was extra strong and on 4-27 when Es was observed.

Frank Merrill; P.O. Box 7207, Toledo, OH 43615 EST/EDT 6/4/80-9/29/80

6/4 Tr 2100	WKMU-21 KY	6/28 Tr 0139	WHTM-27 PA	7/1 Tr 0753	WSIL-3 IL
	WICS-20 IL		Harrisburg		KFVS-12 MO
	WAND-17 IL	0225	KODE-12 MO	1433	WBKO-13 KY
	WVUT-22 IN		Joplin		Bowling Green
	WUSI-16 IL	0228	KTHV-11 AR		WSIL-3 IL
	WFIE-14 IN	0257	KUHI-16 MO	1445	WTVF-5 TN
2300	WRAU-19 IL		Joplin	1530	WKPT-19 TN
	WMBD-31 IL	0315	KTVI-2 MO		W39AB TN
	WGEM-10 IL		St. Louis	7/3 Tr 0134	W01-5 IA
2330	WTVK-26 TN		2200-2330		Ames
	WKPT-19 TN		WRAU-19 IL	0231	WISC-3 WI
6/5 Tr 0133	WBKO-13 T		WICS-20 IL	0300	W0WT-6 NE
0140	WZTV-17 TN		WHA-21 WI		Omaha
	WBAK-38 IN		WIFR-23 IL	0327	WCNY-24 NY
0159	WAFB-48 AL		WVTV-18 WI		Syracuse
	Huntsville		Chicago	0338	KNXP-9 MN
0214	WRAU-19 IL		stations.		Minneapolis
	WHNT-19 AL		WEEK-25 IL	0408	KOLN-10 NE
0218	WNGE-2 TN		WKOW-27 WI	0501	WSTM-3 NY
	Nashville		WTVO-17 IL		Syracuse
0243	KFVS-12 MO		WQRF-39 IL	0547	CBFT-15 ON
0253	KPLR-11 MO		WMTV-36 WI		Belleville
	WHAS-11 KY		WNVS-10 WI	0540	WICZ-40 NY
0318	WTVF-5 TN	6/29 Tr 0845	WGEM-10 IL	0624	WEYI-25 MI
6/20 Es 1230	WGBH-2 MA	-1000	KPLR-11 MO		WVIT-30 CT
	WFSB-3 CT		WILL-12 IL		WETM-18 NY
1255	WBZ-4 MA		WICD-15 IL		(was WSYE)
	Boston		WRAU-19 IL	0625	WSKG-46 NY
2030-2100			WICS-20 IL	0631	W63AB PA
	CKCW-2 NB		KDNL-30 MO		Mansfield
	CBHT-3 NS		WEAK-38 IN	0632	W71AI NY
	CJCB-4 NS	1000	KFVS-12 MO		Stamford
	CBIT-5 NS	-1200	WUSI-16 IL	0634	W64AS NY
	CJCB1-6 NS	1600	WNED-17 NY		Sherman
6/21 Es 0307	KWGN-2 CO		WNPE-16 NY		(17 mi. NW of
0403	KUTV-2 UT		WXXI-21 t		Jamestown--wd)
	Salt Lake City	7/1 Tr 0130	KHQA-7 MO	0706	WUHF-31 NY
	(1410mi.)		WGEM-10 IL		Rochester
6/26 Es 2000	KYTV-3 MO		WQAD-8 IL	0732	WVNE-31 NH
	Springfield		KDUB-40 IA	1130	WNPE-16 NY
Tr 2309	WTVQ-36 KY		WICS-20 IL		Watertown
	Lexington		Madison U's	7/6 Es 0100	CKBI-5 SK
6/27 Tr 0339	WCGV-24 WI	0234	WVTM-13 AL	0117	CBKFT-3 SK
	Milwaukee		Birmingham		Prince Albert
2100	WUSI-16 IL	0251	WHEF-4 IL	Tr 2300	WKPT-19 TN
	WICS-20 IL		Rock Island		WCYB-5 VA
2108	KTEJ-19 AR	0346	WERC-6 AL		WDBJ-7 VA
2115	WKMA-35 KY		Birmingham		WSWP-9 WV
	WKMU-21 KY	0348	WTCN-11 MN		WJHL-11 TN
	KFVS-12 MO		KPLR-11 MO		WSVN-47 VA
6/28 Tr 0010	WNPE-16 PA	0412	WCCO-4 MN	7/7 Tr 0043	WSOC-9 NC
	WCDC-19 MA		KSTP-5 MN		Charlotte
	WDAU-22 PA	0358	WMT-2 IA	0118	WCCB-18 NC
	WBRE-28 PA		Cedar Rapids		Charlotte
	WENY-36 NY	0458	WDEF-12 TN	0143	WATE-6 TN
	WICZ-40 NY	0540	WLUC-6 MI		Knoxville
0022	WGGC-34 NY	0745	WENT-19 AL	0154	WBTV-3 NC
	Binghamton		WAAV-31 AL		Charlotte
0025	WVIT-30 CT		WMBD-31 IL	0217	WAVY-10 VA
	New Britain		WZTV-17 TN		Portsmouth

Frank Merrill; continued---

7/7 Tr 0324	WAGA-5 GA	7/9 Tr 0029	WETA-26 DC	7/14 Tr 0215	KTVO-3 IA
	Atlanta		Washington		Kirksville, MO.
0518	WRCB-3 TN	0034	WBFF-45 MD	0246	K33AA IA
	Chattanooga		Baltimore		Ottumwa
0529	WXIA-11 GA	0158	WJLA-7 DC		(rebroadcasting
	Atlanta		Washington		WISN-12)
0554	WSB-2 GA	0228	WBAL-11 MD	1000	W68AA IL
	Atlanta		Baltimore		Danville(WAND)
0559	WANX-46 GA	0628	WMAR-2 MD	7/15 Tr 0647	W48AA WV
	Atlanta		Baltimore		Grant Cty.(WVWU)
0605	WETV-30 GA	0642	W36AB MD	0652	WHAG-25 MD
	Atlanta		Oakland		Hagerstown
0608	WLOS-13 NC		(WWPB-31)	0722	W70AE WV
	Asheville	0643	WHPB-31 MD		Moorefield(WTOB)
7/8 Tr 2330	WHPB-31 MD(tent.)	7/16 Tr 0358	Hagerstown	0358	CJOH-13 ON
	WHPB-67 MD		Davenport		Ottawa
	Baltimore	7/14 Tr 0158	WOC-6 IA	0403	CJOH-8 ON
					Cornwall
				0410	CICO-24 ON
					Ottawa

Steve Sprachman; 3939 Eve Drive, Seaford, NY 11783

"I am writing to report that there is almost nothing to report. The DX has been so bad lately, the only stations received on anything that resembles a trop are WVT-30 Hartford, CT and the Philadelphia area U's- 17, 23, 29, 48 and 52. The last decent anything was Feb. 16. On that date, in the morning, the DC and Harrisburg U's were seen. Is it the weather?(It must be, it's been kind of dead here too.-wd) The days have been warm and the nights cool. Is it my antennas or lead in wire?(I doubt it but it wouldn't hurt to check. I make it a point to check all my antennas, etc. this time of year to make sure they are working the way they're suppose to.--wd) Are others finding conditions really poor?(Judging from the number of reports received this month, I would say so.-wd)

There's even nothing newsworthy to report about the local stations. Hopefully, there will be more next month.

On the good side, I'm two weeks away from my vacation. I hope to add to my TV Guide collection about 20 to 25 editions. I will report any DX I see between New York and Eastern Wyoming.

Hopefully '81 will turn into the best DX year yet(but I won't lose too much sleep if it doesn't).

Robert Grant; 5775 Bishop, Detroit, MI 48224 (CDT--see comments)

2/15 Ms 0351	WCCO-4 MN	3/19 Tr 0538	WDTN-2 OH	4/12 Au 2345	Unideds on
17 Tr 1555	WCLQ-61 OH	22 Ms 0605	WCBS-2 NY		chs.5,6,12 & 13.
	(new call-ex-	0616	WSB-2 GA	13 Au 0155	Unideds on ch.
	WKBF; never log-		Atlanta		2. WJBK-2 off."looks
	ged as WKBF)		(No. 213)		like 100 STV(pay)
28 Es 1010	Unideds on	27 Ms 0512	WSB-2 GA		stations all at once
	chs. 2, 3 & 5.		0521	WNGE-2 TN	"
3/12 Tr 0415	WBEM-2 IL	28 Tr 0515	WTTV-4 IN		Au 0355 fade out.
17 Gw 0050	CBET-9 OH		0520	WGN-9 IL	14 Ms 0400
19 Ms 0500	WNGE-2 TN		0535	WISH-8 IN	16 Tr 0422
	Nashville		0555	WTHR-13 IN	WBEM-2 IL 250
	(No. 212)		0536	WTHR-13 IN	(simultaneous)
	(State No.27)	30 Tr 0642	WCBS-2 NY		0439
		Ms 0459	WNGE-2 TN		WTHR-13 IN 235
	0536	Tr 0625	WWUP-10 MI		Ms 0535
	Dayton	3 Ms 0520	WNGE-2 TN		WCBS-2 NY 470
	(Shortest Ms)				

"CDT (GMT-5) is the standard winter time zone here in MI. On 4/26 we switch to Central Double Daylight Time (C2DT, or GMT-4) anyway, you may know it better as (EST/LDT). I hope that I have not confused anyone.

Equipment is now an R.S. V-90 log & Gemini AXL rotor for WHP, loop for UHF (I had purchased an R.S. 4-bay bowtie(actually a 3-bay)for WHP but it has less gain than the loop!) Main DX set is now a 1979 12" Sears B&W, the 1969 RCA color set is busted again(and again).

As for your questions on WIHT-31, (or just "IT"): "IT" has its transmitter between Chelsea and Waterloo, MI. This gives "IT" a city grade signal in Jackson. (But I doubt that the inmates at Southern MI Prison can afford subscription TV!) The "IT" signal is very weak on Detroit's east side.

My first Au opening was DX-iting, although I didn't I.D. anything. Bill, did you get in on this Au opening?(Yes, see my report for details.--wd)

By the time you WTFDAers are reading this, Es should be in full swing! If Es is as good as I hope, check channels 14,15,16...every hour!(Wishful thinking, hi.)

Christopher Hanley; 1125 Bolton St., Winston-Salem, NC 27103 EST

3/30 Tr 0655 WPDE-15 SC 135 Florence
4/4 Tr 0014 WITN-7 NC 185
0029 WCIV-4 SC 225

"That's it so far this year. In fact, that's it since September 1980(everything else was/were relogs of 165 mi. or less.). School and etc. has kept me busy (though I imagine I'll make time when conditions improve, hi.).

WPDE-15 says it has the tallest tower (UHF) in the country--2000ft. Can any body top that?

WGGT-48 is not on the air as I write this (4/27/81). They should be on the air soon; their advertising billboards (red, purple and blue with "We're Gonna Getcha Triad") are already up and the May ratings sweeps are approaching. They'll share WPMY-2's tower in Randolph Co."

George Rogers; 320 Lafayette Rd., Chickamauga, GA 30707 EST

From Atlanta, GA:

3/22 Tr 1020 WRDW-12 GA 150 3/22 Tr 1400 WVTM-13 AL 150

Via CATV from Atlanta, GA:

3/23 0800 WGN-9 IL 708 3/23 0900 WOR-9 NY 854
New York
(No. 449)

From Chickamauga, GA:

3/31 Ms 1125 WCCO-4 MN 4/20 Tr 1235 WAGA-5 GA 4/23 Tr 2105 WMAE-2 MS 280
Minneapolis WGTW-8 GA 24 Tr 0805 WJSP-28 GA 205
(previously via Es) WXIA-11 GA WYEA-38 GA 224
4/19 Tr 0835 WHMA-40 AL 4/21 Tr 1800 WSM-4 TN WBMG-42 GA 145
0845 WTBS-17 GA 1805 WTVF-5 TN WDAM-7 MS 359
4/20 Tr 1235 WSB-2 GA 4/23 Es 1000 ICR-2 Cuba WALA-10 AL 372
(1st Es of season)

"As promised in my last report, I did get some April Es. On the 23rd when I got the Havana station in at 1000, they had a school lesson on at that time. I do think that I will get at least one high band Es opening this season. Remember my motto, "We're Gonna Have DX Fun in '81".

New equipment includes an RCA 12" TV model no. AFR-246-W; pretty good set.

Greg Kelley; 211 St. Clair Ave. SW, New Philadelphia, OH 44663 EDT

All DX seen on 5/1.
Tr 0630 WTAP-15 WV 115 Tr 0630 WPCB-40 PA 90 Tr 0800 WGTE-30 OH 150
WXON-20 MI 170 CKCO-42 ON 180 CICO-59 ON 145
WPTT-22 PA 75 WTVS-56 MI 170 WSEE-35 PA 125
WDHO-24 OH 150 WGPR-62 MI 170 CBET-9 ON 160
WEYI-25 MI 220 0700 WKBD-50 MI 170 CFPL-10 ON 175
CKGN-29 ON 180 WSFJ-52 OH 75 Toledo V's
WIHT-31 MI 175 WBTI-64 OH 200 W7AB OH 55 (WOSU)
Mansfield

22 "My DXing for the past 30 days has been nothing to brag about, although there was an opening around the 25th of April that had similar results. I did switch from 300 ohm to cable for my VHF and seems to have reduced static

Greg Kelley; continued---

from a plant not far away. Looked to me like there might had been an Es opening today. But whatever it was faded out shortly.

Bill, will certainly miss your FCC news reports. I've really enjoyed reading them and learning about those translators relaying western TV stations. I've never seen or heard of "Broadcasting" magazine and wish it was around here.

Had a conversation with a guy who is building a STV box to decode ch.61 Cleveland. Says he will give me the plans if his works.

The same guy tells me his home and 7' dish (CM) is on a 1200' hill and by using a 32db gain preamp he gets Chicago U's as normal reception!!!! Makes you feel ill, huh? (Sounds like he's got a super set up. Now you should work on him to join the WTFDA--wd).

William R. Hepburn; 5659 Highland Ave., Niagara Falls, ON L2G 4X2 EST

"Here is what little DX occurred this winter-- not much to say the least. Cool weather has delayed tropo activity a bit. Log totals now 139 VHF + 52 UHF = 191."

2/27 Tr 2245 WKBD-50 MI t 3/25 Tr 0748 CHRO-5 ON t 4/18 Tr 2235 WIIIC-11
WGPR-62 MI t (where's Pittsburgh
3/12 Tr 0844 CICA-5 ON t this one? 2238 WPGH-53
23 Tr 0818 WCLQ-61 OH 210 wd) Pittsburgh
Cleveland 28 Tr 0814 WKBD-50 MI 210 WPCB-40 PA t
"Q-61" ind. 31 Tr 1924 Detroit U's " 2253 WQED-13
(50,56&62) Pittsburgh

"WKTU-2 Utica only VHF within 200 miles that still has yet to be received."

William J. Draeb; Ellis St. R.R.#2, Kewaunee, WI 54216 CST-CDT

3/9 Tr 1835 WKSO-29 KY 3/25 Tr 1742 WKLE-46 KY 4/16 Tr 1850 WKYT-27 KY
1838 WKLE-46 KY WTVQ-36 KY 17 Tr 0802 KDNL-30 KY
KDNL-30 MD WCET-48 OH WTVQ-36 KY
1848 WTVQ-36 KY 27 Tr 1909 WCET-48 OH WKLE-46 KY
10 Tr 1840 WTVQ-36 KY 1936 WBTI-64 OH WLKY-32 KY
WKLE-46 KY WPBO-42 OH WDRB-41 KY
WCET-48 OH 1945 WLKY-32 KY 0805 WKYT-27 KY
WCET-48 OH 1955 WTVQ-36 KY 2120 WCET-48 OH
11 Tr 1725 KDNL-30 MD 1955 WTVQ-36 KY 2145 WPTT-22 PA
WPTT-22 PA 4/5 Tr 1842 WKLE-46 KY 18 Tr 2137 W68AA-68 IL
1940 WTVQ-36 KY WSEE-35 PA W63AH-63 OH
WKLE-46 KY WQLN-54 PA 2010 WUTV-29 NY 2150 WKMJ-68 KY
WDRB-41 KY WKON-52 KY WDRB-41 KY
WLKY-32 KY 2017 WKSO-29 KY WLKY-32 KY
2049 WCET-48 OH 2041 WCET-48 OH 2205 WKPC-15 KY
14 Tr 2100 WTVQ-36 KY 2057 WKPC-15 KY 27 Tr 0625 WKBN-27 OH
15 Tr 1825 WTVQ-36 KY 4/5 Tr 1842 WTVQ-36 KY 0634 W39AA-39 IN
WKLE-46 KY 12 Tr 2054 WCET-48 OH Es 2128 Unids chs.2-4
16 Tr 1819 KDNL-30 MD 12 Tr 2054 WCET-48 OH 2232 KWAB-4 Tent.
1836 WTVQ-36 KY WKYT-27 KY
WKLE-46 KY WTVQ-36 KY
18 Tr 2232 KDNL-30 MD 2057 WKSO-29 KY 2245 KTWO-2 Tent.
21 Tr 1944 WKLE-46 KY 2117 WCET-22 TN 2314 KENW-3 NM
WDRB-41 KY Au 2145 CBWFT-3 MB 5/3 Tr 0830 WKBD-50 MI
WLKY-32 KY Other unids 0900 WUTV-29 NY
WTVQ-36 KY on chs.2-6. It 1530 WXIX-19 OH
22 Tr 1109 WPTT-22 PA (the aurora) WCET-48 OH
1230 WKLE-46 KY seemed to in- 1940 WKYT-27 KY
WTVQ-36 KY tensify after WTVQ-36 KY
1648 WCET-48 OH the DX was gone WKLE-46 KY
WKON-52 KY around 2215. 2004 WHUL-33 WV
23 Tr 1744 WTVQ-36 KY 14 Tr 0715 WKYT-27 KY 2013 WSVH-47 VA
WKLE-46 KY WTVQ-36 KY WKPT-19 t
WKSO-29 KY WKLE-46 KY WKSO-29 KY
WDRB-41 KY WCET-48 OH 2035 WPCP-15 KY
WLKY-32 KY 16 Tr 1835 WTVQ-36 KY 2038 WDRE-41 KY
2110 KDNL-30 MD WKLE-46 KY More next month-wd

WESTERN TV-DX

June 1981

Fred McCormack
Box 5221
State University Sta.
Fargo, ND 58105

Deadline: 10th

TECHNICAL TOPICS



The Es season started on April 29 in San Jose. It hasn't been noted here yet, although there has been some auroral induced Es. There have been many days of intense auroral activity, but as usual with aurora on TV, no ID's were made.

Let's have lots of reports of the new Es season for the July issue.

New _____ New Mode _____ Tentative - t Unidentified - unid

Randy Miltier, 1068 Fariview Ave., San Jose, CA 95125 PLT

April 1981 Equipment: 1980 Magnavox 19" color
older Winegard V/U w/rotor at 50'

29 Es 1010 unid 2
1031 unid 3 A (KTVS?)
1100 KMID 2 TX 1225
1101 KENW 3 NM 1100
1116 unid 4 n/e
1140 unid 2 n/e
1427 unid 3

It's good to be back in these pages - it means the DX season is beginning in California. April 29 brought in my first Es of the new season along with a new state with KENW-3 NM logged. The only new equipment here is a 19" Magnavox color set. Plans are still in the works for a new VHF and UHF antenna. Hopefully soon.

There have been a couple of call letter changes in the area: KGSC-36, San Jose, is now KICU-36 and KMUV-31, Sacramento, is now KREK-31.

I took by amateur novice test about three weeks ago, so I'm anxiously awaiting word from the FCC. Good DX to all.

Fred McCormack, 3022 S. 13th St., Fargo, ND 58103 CST/CDT

Equipment: 9" Broadmoor television, CH-7078 V/U, CH-9095 UHF, B-T CMA-U preamp

I moved to a different house on April 1 and took advantage of the move to add a separate UHF antenna and to move the preamp to the top of the down lead. The new location is on the south side of the city and has the advantage to UHF of nothing higher than my antenna between it and the horizon. Hopefully it will produce a little more UHF than I have been seeing in recent years.

January 1981 16 tr 2328 KTIN 21 IA 305 3 tr 0015 KSIN 27 IA 300
11 AE 2322 WCAX 3 VT 1165 2331 K32## 32 MN 110 0026 K57BL 57 MN 90
2338 WNGET 2 TN 905 (Long Prairie KSTP-5) (Donnelly KTHI-11)
2358 KTCI 17 MN 215 0030 K61BJ 61 MN 90
(Donnelly KDLO-3)
April 1981 May 1981 0030 K59BT 59 MN 90
(Donnelly KMSP-9)
12 Au Strong Ch 2-13 1 tr 0859 K61BH 61 MN 145 AE 2347 CHRC 2 BC 1060
16 tr 2130 K14## 14 MN 150 (Deer River KBJR-6) K14## Willmar is 1KW
(Willmar KSTP-5) 0907 K57BK 57 MN 135 TPO. Part of KSTP O&O
2155 K36AA 36 MN 95 (Northome KDLH-3) group coming on this
(Alexandria KDLO-3) 0908 K55BY 55 MN 135 spring and summer.
(Alexandria KTHI-11) (Northome WIRT-13)

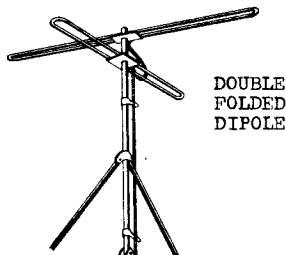
GWDXA GETTOGETHER

The Golden West DX Association, an international group of radio enthusiasts, especially in the MW & FM bands, will be holding its 3rd annual Oversized QTC (read Convention) 25-28 June in Chicago, IL. Major activities will include the world-famous "Sticker Smorgasbord", many station tours/raids, a big soccer game between the GWDXA & Chicago Area DXers (CADX) All-Stars, and of course a more-than-adequate selection of cold beer and warm soda pop. Everyone is invited!

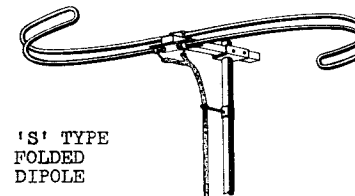
Contact: Mark Strickert, 2507 N. Kimball, Chicago IL 60647, (312) 227-3669
--send a self-addressed stamped envelope for details.

Q: "I don't have any room to put up a large FM antenna outside for DXing, but I have enough space on my balcony for an omnidirectional type of antenna. Are these any good for DXing? Can you stack them for more signal gain?"

A: Omnidirectional antennas of any kind are practically useless for serious DXing purposes. Since they are omnidirectional, you can see why they can't do a DXer much good--they don't have any real directivity, and thus, can't be used to null out an interfering signal. These antennas are available in various configurations, as shown below.



DOUBLE
FOLDED
DIPOLE



'S' TYPE
FOLDED
DIPOLE

Most of the omnidirectional FM antennas available are simple variations of the folded dipole antenna, and can't in theory have any more than 0 dB of gain. In practice, some of them have negative gains in terms of dB, such as -2 dB at 88 MHz, etc. This does not mean that they can't pick up signals; it simply means that they are only useful for strong signals--such as your local and stronger semilocal FMs. You can get a bit more gain by stacking certain types of omnidirectional antennas, such as the double folded dipole at left, above, but only if you do it carefully. In practice you'd get about 2.5 dB additional gain. Omnidirectional FM antennas can be used to receive strong E-skip and some strong tropo signals, but without directivity, would be a poor second in DX performance even to a simple pair of rabbit ears rotated by hand.

Q: "A national electronics chain is selling a ten-element FM yagi antenna that looks exactly like one made by one of the better antenna companies. Is it the same antenna? The electronics chain does not give the specs."

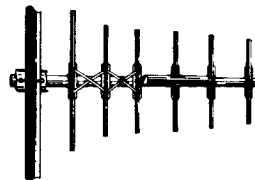
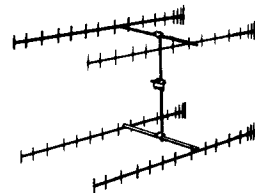
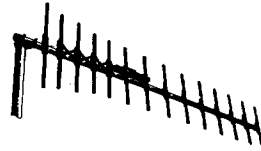
A: Beware. In some cases, such electronics stores will be selling what appears to be the same thing as a well-known major-brand antenna, when in fact, it's an imitation of the better antenna, with a shorter boom, different feed system, or even shorter elements. It's true that major antenna manufacturers are also in the "private label" business, making their antenna designs under their own brand name as well as that of another company. However, you often get what you pay for, and that cheaper version of a hot DX antenna turns out to be such a bargain because its a smaller version as well. Don't go by the picture in the catalog; demand the specs from the manufacturer. If they won't give you them, or won't give you a straight answer, chances are they're trying to sell you an inferior product. By the way, there are some very good antennas being sold by national electronics chains that are the equivalent of some well-known models, sometimes at lower prices, but these are the exception, rather than the rule. We suggest that you try to learn as much about the antenna that you're considering as possible before you buy--even to the point of comparing boom lengths and thickness of elements. In addition to having better DX performance, a good quality antenna also must be able to stand up to rough weather conditions.

IN SEARCH OF PSB

Donald L. Blevins
1715 Earhart Road
Baltimore, MD 21221
#301-574-2714

IN SEARCH OF PSB.....This month will feature northern Florida, as submitted by Gary Thomas of Pensacola, Florida. A list of this sort is vastly appreciated, as this type of information keeps this monthly feature alive.

City Police	Frequency	Hospitals
Blountstown	460.075	Baptist 155.28
	460.275	155.34
Bonifay	460.275	163.25
Chipley	460.025	Sacred Heart 155.28
	460.275	155.34
Crestview	460.275	33.08
Fort Walton	460.075	West Florida 152.075
	460.150	155.34
	460.250	Santa Rosa 155.28
Defuniak Springs	460.050	155.34
Gulf Breeze	460.275	Century 155.28
	460.400	155.34
	460.375	Milton 155.16
Marianna	460.275	155.28
	460.425	155.34
Mexico Beach	460.275	
Milton	460.400	
Panama City	460.175	
	460.275	
	460.375	
	460.400	
	460.425	
Pensacola (2)	460.025	
	460.100	
	460.150	
	460.175	
	460.275	
	460.425	
County Sheriff		
Bay	460.225	
	460.275	
	460.400	
	460.450	
Calhoun	460.275	
Escambia (1)	460.100	
	460.275	
	460.475	
	460.500	
VHF (1)	159.150	
	159.180	
Highway Patrol		
Mobile	44.90	
Base	45.06	
North Florida	154.665	
	155.505	
South Florida	154.695	
	155.460	
Car to Car	154.920	
Civil Defense	37.26	
Marine Patrol	44.96	



Railroads	Frequency
Apalachicola	160.38
Atlanta & St. Andrews	160.77
	161.295
	161.37
L & N	
Marianna & Blountstown	161.25

Amateur Repeaters	Frequency
Fort Walton	146.79
Panama City	146.70
Pensacola	146.61
	146.67
	146.76
	146.85
	146.89
	146.94

Marine	Frequency
Intership Safety	156.30
Commercial	156.45
Distress	156.80
USCG	157.10
Pensacola Marine Operator	161.90
	162.00

Public Utilities	Frequency
Gulf Power	153.56
	153.89
Okaloosa Power	48.18
Pensacola Gulf	153.665
Pensacola Public Utilities	153.65

Pennsylvania State Police	Frequency
155.505 Base	
155.85 Mobile	
155.58 Base	
155.79 Mobile	
155.67 Base	
155.91 Mobile	
154.755 Mobile to Mobile	

While in Jefferson, North Carolina I was able to observe the following:

North Carolina State Patrol

42.60 Base	Newton
42.66 Mobile	
42.62 Base	Asheville
42.52 Base	Salisbury
42.80 Mobile	

Ashe County Sheriff 154.845

Regional Point to Point 154.875

Statewide Agency to State Patrol/
State Patrol to Agency 155.19

Virginia State Police 159.165
Wytheville

Smyth County Sheriff 39.40
Marion, VA

Wise County Sheriff 39.42 *
Wise, VA

Craig County Rescue 39.50
New Castle, VA

Roanoke County Sheriff 39.36
Roanoke, VA

Roanoke Police Department 155.13
Roanoke, VA

Lynchburg Police 155.55
Lynchburg, VA

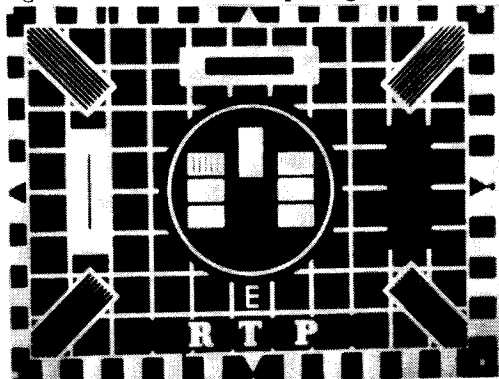
* Former member Gary Mullis, a dispatcher for Baltimore County Police, reports that Wise County Sheriff can frequently be received in Towson using police department receivers, as well as Juniata County Sheriff in Mifflintown, PA.

From the latest information in the Police Call Magazine, I have been able to assess that Virginia has added or replaced the statewide point to point network, formally on 39.50 with 39.54 mhz. Rescue squads are frequently on 39.50 so that local police or sheriffs can page squad members.

MAKE YOUR CONVENTION PLANS NOW!

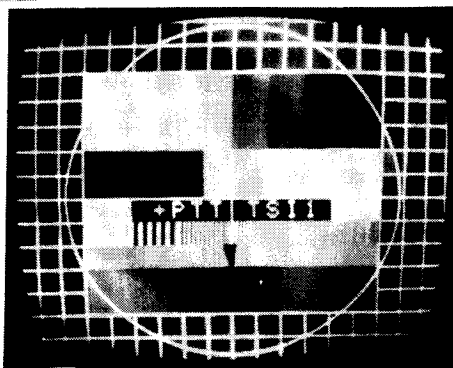
A LOOK AT EUROPEAN TEST PATTERNS

Test patterns are becoming increasingly rare on TV stations around the world, as broadcasters make the switch to the more versatile and accurate electronically-generated bar-type patterns. Nevertheless, they're still using test "cards" in Europe regularly. Here's a look at some of them:

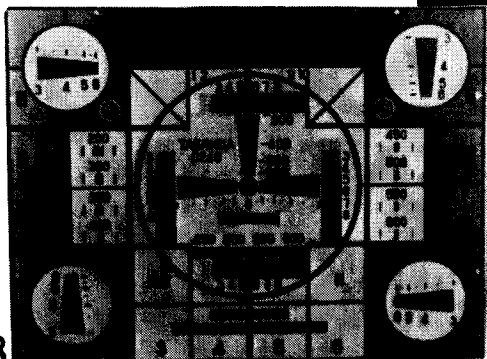


RTP, Portugal

Switzerland
(Italian Service)

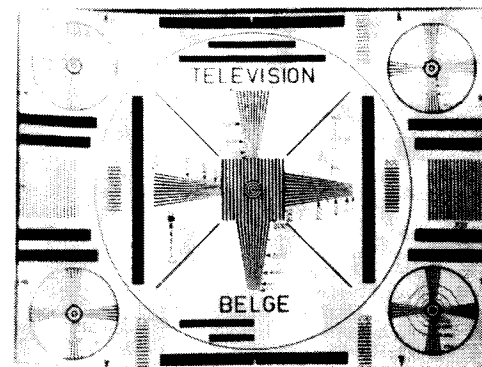


U.S.S.R.

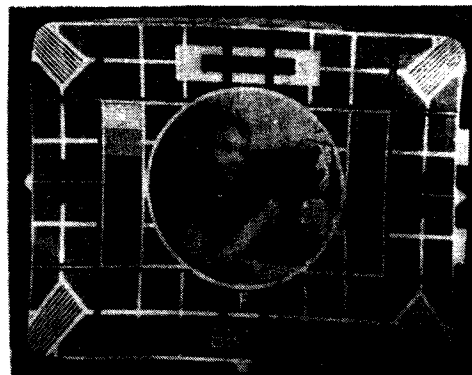


A LOOK AT EUROPEAN TEST PATTERNS

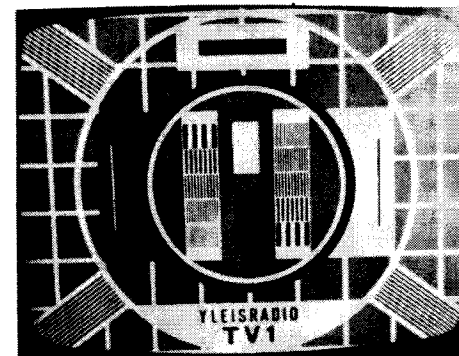
BRT/RTB, Belgium



BBC1, England



Finland



North American TV DXers who were successful in receiving BBC 45 MHz video signals during the recent sunspot peak may recognize the BBC1 test card.

WTFDA would like to thank British TV DXer Keith Hamer for these test pattern photos, some of which are actual shots of the test cards themselves, rather than over-the-air video photos.

Fred Nordquist
7945 Boxford Road
Clay, NY 13041
Deadline: the 5th

JERROLD STO-82: THE BEST UHF BALUN

FM SCOREBOARD

Dxer, Location	Rank	Total	88-92	Es	MS	Au	USA	CN	MX	PO	TPU	YE	As of:
Andy Bolin, Charleston IL	1	2021	325	776	100	286	45+	7	5	3	61	70	4/28/81
Pat Dyer, San Antonio TX	2	1421	181	1156	23	0	41+	3	6	3	54	70	11/15/80
John Ebeling, Bloomington MN	3	1303	188	720	28	77	47+	4	4	0	56	52	8/21/80
Mike Dalton, Clearwater FL	4	1188	248	689	7	0	41+	2	12	12	68	72	10/1/80
Danny Buntin, Stillwater OK	5	1169	140	670	1	0	47+	5	8	0	61	74	12/2/80
Fred Nordquist, Clay NY	6	1122	162	513	27	42	39+	5	0	2	47	69	5/17/81
Peter Sawatzky, Guelph ON	7	1062	153	484	112	5	38+	7	0	1	47	71	1/14/80
Mike Bugaj, Enfield CT	8	1031	125	520	7	16	37+	3	0	1	42	74	8/14/80
Fred Mc Cormack, Des Lacs ND	9	1028	131	775	25	77	44+	6	3	0	54	65	8/3/80
Ralph Strobel, Muncie IN	10	959	242	93	16	0	31+	3	0	0	35	72	3/3/81
Joseph Fela, So. Plainfield NJ	11	917	178	431	2	9	37+	5	0	3	46	68	8/10/80
Roger Winsor, Hobart IN	12	807	160	211	0	0	32	1	0	3	36	60	3/30/80
Hank Holbrook, Chevy Chase MD	13	750*	174	202	12	0	35+	5	0	3	44	59	12/5/80
Tim McVey, Bolivar TN	14	705	89	155	2	0	39+	4	2	0	46	77	8/1/80
Dave Brumfield, Muncie IN	15	637	136	33	1	0	28	1	0	0	29	78	3/3/81
Vernon Eaton, Benton AR	16	617	104	112	1	5	33	5	7	0	45	77	7/26/80
Richard Steinberger, Hudson MA	17	546	108	234	10	6	33+	2	0	0	36	58	11/15/80
Joseph Smith, Johnson City NY	18	524	69	98	0	0	30+	2	0	1	34	71	8/22/80
John Jefferson, Pleasanton CA	19	517	102	255	67	0	20	4	2	0	26	57	2/22/81
Fred McCormack, Fargo ND	20	504	57	301	2	39	42+	3	0	0	46	74	8/3/80
Pat Durkin, West Allis WI	21	350	69	21	0	0	23+	1	0	0	25	78	11/30/80
John Ebeling, Prosser MN	22	346	45	107	2	0	36+	4	0	0	41	75	8/21/80
Paul Traska, Buffalo NY	23	293	113	86	2	0	31+	3	0	1	36	76	10/29/80
Ken Simon, Lake Worth FL	24	274	97	201	0	0	28+	2	1	4	36	66	7/26/80
Alan Michalek, Springfield MA	25	230	29	90	0	0	28	4	0	0	32	52	11/15/80
John Bolduc, Nashua NH	26	185	42	16	0	0	19	0	0	0	19	74	7/1/80
Bob Schweitzer, E. Brunswick NJ	27	170	58	7	0	0	9+	0	0	0	10	77	3/19/81
Paul Mount, Teaneck NJ	28	150	23	17	0	0	18	2	0	0	20	77	9/14/80
Dave Hascall, Fortville IN	29	147	24	11	1	0	13	1	0	0	14	76	6/29/80
Frank Wheeler, Erie PA	30	144	16	3	0	0	7	1	0	0	8	64	7/21/80
Paul Mount, Nelsonville OH	31	129	7	3	0	0	8	1	0	0	9	78	5/19/80
John Adler, Milbank SD	32	123	10	15	1	0	17+	0	0	0	18	78	7/30/80
Wm Hepburn, Niagara Falls ON	33	115	37	21	0	0	17+	1	0	0	19	79	5/1/81

Scoreboard definitions in Oct 80 VUD page 44. Send in your summer '81 updates by 8/5/81!!!!!!
*-Verified.

STATES STATS

State #	Dxer #	Dxer #	State #	Dxer #	Dxer #	State #	Dxer #	Dxer #	Prov. #	Dxer #				
AL	48-tm	44-ab	IN	137-rs	128-ab	NE	24-ab	23-je	SC	32-je	25-db	AT	13-db	2-ab
AK	None		IA	88-je	65-ab	NV	12-fm	7-jj	SD	20-fm	17-je	BC	5-fm	
AZ	22-fm	21-je+	KS	55-ab	40-fm	NH	18-rjs	17-jb	TN	64-tm	60-ab	MB	13-fm	4-ab
AR	59-ve	36-tm	KY	75-ab	61-rs	NJ	54-jf	52-res	TX	211-rls	145-ab	NY	4-ab	1-tm+
CA	189-je	74-fm	LA	53-rjs	36-ve	NM	34-ab	27-je	UT	18-ab	17-rjs	NP	8-fm	3-jf
CO	49-ab	34-je	ME	29-ab	25-rjs	NY	147-fm	132-je	VT	9-rjs	8-ab	NS	9-ab	8-ab
CT	38-ab	32-je	MD	35-jf	21-je	NC	59-je	48-db	VA	38-je	33-db	ON	51-fm	38-wh
DE	11-sw	9-je	MA	76-rjs	63-je	ND	17-fm	13-ab	WA	15-je	10-je			
FL	106-ab	82-db	MI	101-rs	93-rw	OH	159-rs	124-deb	WV	25-rs	24-ab	PE	1-jf	1-cb
GA	44-je	43-db	MN	106-je	62-fm	OK	68-db	37-fm	WI	109-je	90-ab	PQ	17-fm	
HA	None		MS	60-tm	33-fm	OR	16-fm	8-je	WY	13-ab	7-je			11-rjs
ID	19-db	13-vls	MO	85-ab	72-db	PA	90-je	90-fm						
IL	178-ab	143-rw	MT	15-ab	14-je	RI	9-rjs	7-mb+	DC	13-sw	13-je	SA	6-fm	4-ab

+ means 2nd place tied with others. The key to DXers' initials/DX location listed below:

jb-John Bolin NH	ve-Vernon Eaton AR	fm-Fred McCormack ND	res-Bob Schweitzer NJ
ab-Andy Bolin IL	je-John Ebeling MN	tm-Tim McVey TN	rjs-Richard Steinberger MA
cb-Cranston Bonnell NB	ef-Eric Fader NY	fn-Fred Nordquist NY	rls-Rick Sanford TX
deb-Dave Brumfield IN	jf-Joe Fela NJ	js-Joe Smith NY	rw-Roger Winsor IN
db-Danny Buntin OK	wh-Wm Hepburn ON	ps-Pete Sawatzky ON	sw-Steve West PA
mb-Mike Bugaj CT	jj-John Jefferson CA	rs-Ralph Strobel IN	

New FM Distance Records/Corrections not included in the Sept 80 or Feb 81 VUDs:

MHZ	Prop	CL	Location	Miles	Dxer, Location	Old Record	Holder-Miles
107.9	MS	KVLY	TX Edinburg	1075	Andy Bolin, Charleston IL		Hauser-950
94.7	MS	KSET	TX El Paso	1145	" " " "		Nordquist/Hauser-1065
89.7	Es	XHRA	Jal Guadalupe	1570	" " " "		McCormack-1525

(Logged off frequency)

Corrections to Sept 80 VUD p. 41: 99.1 MS Dxer should be J. Ebeling

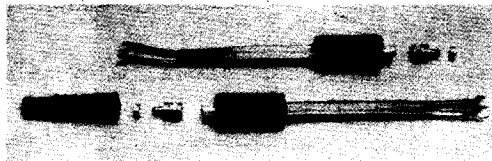
p. 42: 101.9 MS Dxer should be P. Sawatzky

73 - FRED

FM DXers are again reminded to send in their Mexican States Stats & Foreign Country Stats!!!!

If you are using 75-ohm coaxial cable in your UHF DX system, you have to use a balun, or matching transformer, at the antenna terminals--unless you happen to also be using a mast-mounted preamp with a 300-ohm input.

But, if you have a straight-through (i.e., no preamp) run of coax to your DX receiver, or if you are using one of the CATV-quality 75-ohm preamps, such as Blonder-Tongue's CMA-UB-75, which offers high performance on the "old translator channels" (chs 70 to 83), you've got to have a high performance outdoor balun at the feed terminals of your UHF dish.



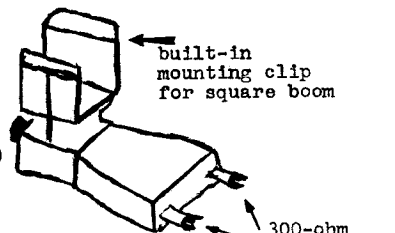
CONVENTIONAL BALUNS

at channel 83, and very poor response across the UHF TV band. Clearly, some of these matching transformers were really only intended to be used for VHF only. However, some of the "all-channel" models offer mediocre results on UHF. Some models, such as Sony's EAC-20W, work very well on the lower part of the UHF TV spectrum, and very poorly on the highest channels.

There is one balun made by a major antenna manufacturer that stands out above all other commercially available units--Jerrold's STO-82. This is an all channel balun that is radically different in design from the more conventional types. The only similarity between it and the other units is the F-type male connector output at the 75-ohm end. Beyond that, it would appear that some very careful thought went into the design, with a very tight waterproof case, and unique input terminals. The STO-82 offers truly "flat" frequency response from ch 2 to 83, an almost incredible feat.

Insertion loss at ch 2 is a bit higher than that of other baluns --this is not too unusual, when you consider the fact that this balun is designed for an extremely wide frequency range. The STO-82 really begins to shine on the UHF frequencies, where other matching transformers begin to falter. In fact, at 550 MHz, the insertion loss was measured at only 0.5 dB. Most other all-channel baluns have 0.8 to 1.0 dB of loss at that frequency. Both loss, and standing-wave ratio, remain very low on this unit all the way up to ch 83.

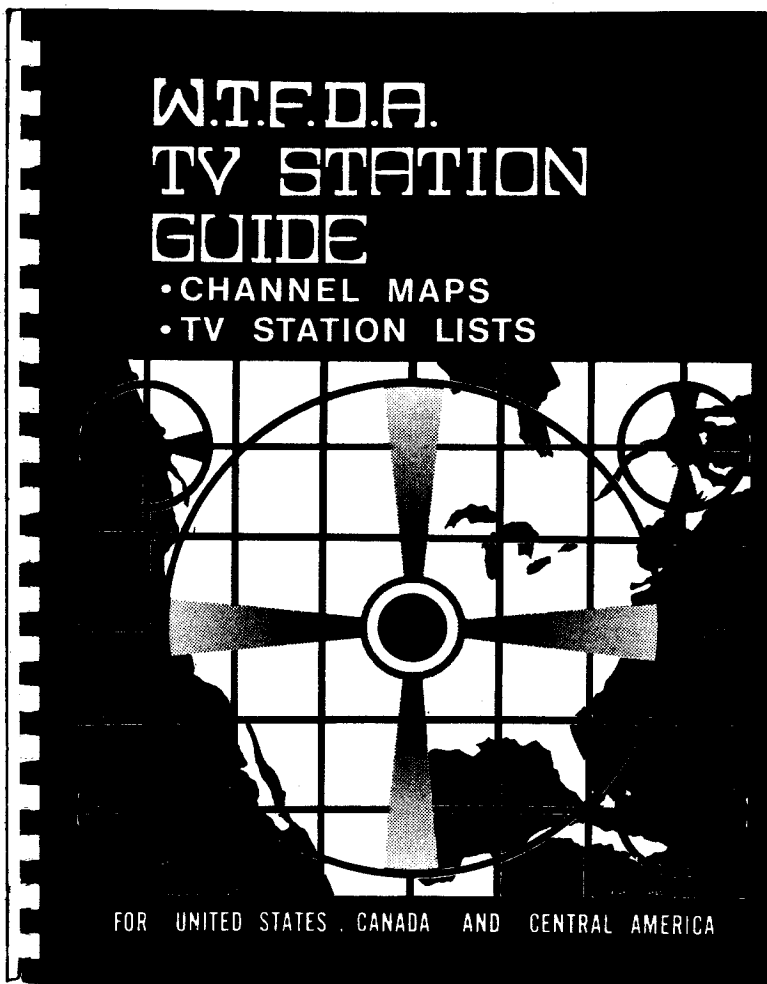
75-ohm output (F-type)



JERROLD STO-82 BALUN

If all this sounds too good to be true, there are a couple of problems. First of all, you may not be able to use an STO-82 with your UHF dish without some slight modification--and this you will have to do carefully, if you want to retain the very low insertion loss offered by the unit. Since the STO-82 features input terminals instead of a short length of twinlead on the 300-ohm side, you may have to improvise. If you are using a Finco dish with folded-dipole feed section, a little careful bending of the feed may be needed--but do it carefully. The reason for this is that the STO-82 was intended to be used only with Jerrold antennas. It does, however, feature a built-in clip that allows it to be attached to a 1-inch square boom. The second problem is the price; currently, it may retail for close to \$10.

NOW AVAILABLE!



THE ONE YOU'VE BEEN WAITING FOR -- It's finally here! The Second Edition of the W.T.F.D.A. TV STATION GUIDE. The only comprehensive reference source of television broadcasting stations known to be on the air in North and Central America, with data on northern South American stations included. With channel-by-channel maps indicating the geographic locations of stations, and complete up-to-the-minute data vital to the TV DXer as well as the broadcasting or communications professional. The only book of its kind-- designed with the long-distance TV reception enthusiast in mind, but also of great use to the CATV industry, antenna installers, and VHF amateur radio operator. Compiled by TV DXers, and contains many new features.

CHANNEL MAPS -- The TVSG features maps for each TV channel, pinpointing station locations, as well as station carrier offset information and the station's network affiliation. Opposite each map is a station list page identifying city, state or province, call letters, network, effective radiated power, and antenna height above average terrain.

LARGE SIZE -- Designed for easy and frequent use, the TVSG is 8½ by 11 inches, and features plastic-coated covers and comb binding, to help withstand daily use by the DXer. Tough enough to withstand frequent reference, and easy to read. 63 information-filled pages.

DESIGNED BY DXERS -- Our club's most professional publication to date, the Second Edition of the TVSG is the product of hundreds of hours of voluntary work by W.T.F.D.A.ers who are full-time artists, draftsmen, writers, students, and broadcast professionals. Featuring layout and production work by Morrie Goldman, map design and drafting by Ron LeBlanc, cover by Harry J. Hayes, and data compilation by John Combs, Bill Fahber, Mike Hollis, Bob Langridge, Steve Sprachman, and Rick Samford.

NEW FEATURES!

COMPLETE CANADIAN INFORMATION -- Now includes low-power Canadian repeaters.

IMPROVED CHANNEL MAPS FOR UHF -- Now much easier to use!

STATE TV NETWORKS -- List of regional networks using group IDs.

EXPERIMENTAL TV STATIONS -- Little-known stations authorized to use the standard TV channels in the U.S.

SUBSCRIPTION TV -- Information on how to spot a scrambled STV signal, and notations on the station lists after each station authorized to scramble their signal.

IDENTIFYING TV IMAGE SIGNALS -- With a list of carrier and image frequencies.

SATELLITE TV DOWNLINK FREQUENCIES -- Info on what's on the "birds."

TERRESTRIAL MICROWAVE TV FREQUENCIES -- Including MDS and IFTS.

EQUIPMENT SUPPLIERS -- Lists of TV antenna and accessory manufacturers, and microwave and satellite TV receiving equipment, complete with their mailing addresses and telephone numbers.

SPECIAL W.T.F.D.A. MEMBER PRICE: \$5.00 / \$6.00 AFTER 6-20.

ORDER YOUR COPY OF THE TV STATION GUIDE RIGHT NOW! The W.T.F.D.A. Member Introductory Price is only \$5.00, if postmarked before June 20; after that, the price for W.T.F.D.A.ers will be \$6.00. The price for non-W.T.F.D.A. members is \$8.00. Please, only one copy to a member at the special low W.T.F.D.A. rate.

ORDER FROM: W.T.F.D.A., P.O. Box 97, Calumet City, IL 60409. Make checks or money orders payable to the Worldwide TV-FM DX Association. HURRY!--you can save \$1.00 by ordering right away if you're a W.T.F.D.A. member.

Recent renewer Jerry Franklin is next up: "Some information about me- 34 years old, have FCC 1st class phone license, single, belong to NRC, and have a small Realistic tuner connected to a ten element FM yagi laid on top of the garage at a height of ten feet." Good to have you with us for another year, Jerry!

Richard Eckman has these words of wisdom for us this month: "I enjoyed Bill Fahber's meteor scatter article in the April VUD. I think that this is one mode of WIF propagation which is not well understood by many and this first part of a series goes a long way toward solving this problem. However, I do think there has been/still is a lot more research in the field than Bill leads us to believe. Ionospheric physicists have been investigating meteor scatter for the last several decades. Take, for example, Davies' book, Ionospheric Radio Propagation (1965), which has a nice section on the subject. On the DX front, my move from Philly to Boulder last August has not been good for TV DXing. Tropo is all but non-existent. I have noted a few Es openings yielding some Alberta stations, but nothing else of real interest. I'm finishing my first year of graduate school at the University of Colorado, in the Department of Astro-Geophysics. This past semester I did a research project in ionospheric physics with Ken Davies at the NOAA/Space Environment Lab. I'm looking forward to an early appearance of Es (it hasn't happened here as of late April) so I can get back into the TV DX habit. 73."

Welcome back to the States, Mike Hollis! He has these comments: "I thought I would check in because it has been a year since I've done any serious TV DXing due to being overseas. During my one year in Korea there was little TV to DX. Conditions for tropo were common due to many days of light winds and hazy sky in the interior. I had a color TV, but no antenna, so I was severely handicapped for DXing. Also, Korea has many high mountains which hinder tropo. The only TV DXing I heard about were some Koreans located on the southeastern coast receiving Japanese TV via tropo over the Sea of Japan. It got to the point that the Korean government had gotten involved to discourage this reception by making people take down their antennas and reorienting them. The biggest event in TV broadcasting was the Korean government granting Korean stations to broadcast in color, which started in December 1980. Also, the Korean Broadcasting System (KBS) started broadcasting on UHF (KBS 3). I took several color pictures of Korean TV test patterns. Maybe the photo-news column can make an exception for these color photos. Also, if anyone wants any reprints of these test patterns drop me a card and I'll have them made at cost plus postage. Here in Enterprise, I've seen numerous tropo openings along the Gulf Coast. I've seen stations in Miami (WCKT 7 and WRLN 17) at 530 miles and my longest catch is KGNS 8 Laredo TX at 880 miles. I'm looking forward to building up my log. Good luck to everyone this summer." You'll find Mike's new address on the preceding page. (p. 3)

Next we have a letter from a Japanese DXer who will be visiting the U.S. this summer and is looking for other DXers to visit: "I'm going to get to the United States this summer, probably from July 19th to August 30th. For that reason, I'm now looking for friends with whom I can talk over DXing and radio stations, and I'd like to visit stations in the U.S. with them. And, I would be very happy if I can stay at their homes for a few days, then I can give much information on Japanese and Asian stations. I'd like to correspond with them before I leave Japan. I have a plan to go to New York, San Francisco, Los Angeles and San Diego, but it can be changed. I intend to cross the continent by bus. I'm a 20 year old college student. I go to a medical college in Tokyo. My hobby is, of course, DXing, listening to the radio around the world." His name is Masaaki Arai, and if you'd be interested in having him visit you while on his trip, write to him at 3-3-4 Minami-cho, Tanashi-city, Tokyo 186, Japan.

To wrap it up this month, we'll continue from last month the comments by the Netherlands Paul Van Rossum: "I looked at your description of the Akai AT V04. Specs seem no better than the Akai PS 200T I tested about 1 and a half years ago; I must admit, I wasn't nearly as positive about it. But, I admit, when all FM channels are nicely spaced 200 kHz apart, and you're not too close to any transmitter, such a set can function quite well, but so can three or four dozen other sets on the market right now! We found that the introduction of the synthesizer tuner has led to a clear deterioration in FM DX possibilities. Therefore, this note to you--presuming the Technics ST 9030 is on your market, I'd try to borrow one if I were you to check it out!" We'll continue this next month. See you all in July.....73.....jz

DON'T MISS IT!

WORLDWIDE TV-FM DX ASSOCIATION

CONVENTION 1981

OKLAHOMA CITY -- JULY 31, AUGUST 1, 2

Plan now to attend the 1981 WTFDA Convention in Oklahoma City, OK. This year's DX gettogether is going to feature something for everyone!

WTFDA Convention '81 will be held at OKC's Ramada Inn Airport West, just off Interstate 40. One of the area's top convention facilities, the Ramada Inn is ideally suited to a DX club convention.

Room rates: a very reasonable \$30 per night for a single/\$35 per night double, with \$6 per extra person. Convention registration fee is \$18, and that covers refreshments and the banquet, which will feature an after-dinner speaker.

With plenty of activities for the whole family, Oklahoma City makes a great place to visit on a cross-country vacation trip. You can easily fit a stop at OKC into your travel plans, as it is centrally located. Or, you can take advantage of the fare discounts being offered by major U.S. airlines this summer--most of them serve Oklahoma City. Since our convention site is an airport area facility, transportation to and from the airport will be easy.

We'll be telling you more about the program planned in next month's issue--but in the meantime, let your convention host know now if you're planning to attend. Use the Convention Registration Form inserted in last month's VUD issue, or send a self-addressed stamped envelope to:

John Zondlo, 1802 N. Rockwell, Apt. 107, Bethany, OK 73008. (405) 787-3717

