

From The STAFF

W.T.F.D.A. Headquarters, P.O. Box 514, Buffalo, NY 14205

WELCOME NEW MEMBERS...Many thanks are due to POPULAR COMMUNICATIONS magazine, a slick monthly for the communications enthusiast that features coverage of DXing. As a result of the publicity they gave us, we have received many requests for information on our hobby and the club--and several new WTFDAers have resulted. You'll want to check this one out at the local newstand; it's full of good stuff.

MAILBOX IS RETURNING...One of the most popular features of the past few years, the WTFDA MAILBOX column, should be returning to the VUD soon. We're glad to say that serious volunteers have finally come forth to take on this task. More on this in the next issue.

MORE GOOD NEWS...Through the efforts of Mike Hogan, HQ has finally dug up a few remaining copies of the WTFDA UHF TRANSLATOR DX GUIDE. We should point out that this is the second edition (1979) and DXers have recently commented on the fact that it is rapidly becoming useless due to the many rapid recent changes on the UHF TV band. Nevertheless, it contains some great tips on DXing those low power UHF TV relays that often cannot be seen without above average equipment. The few copies remaining are available at \$2.00 each. Members ordering \$20 or more worth of club supplies will receive a copy free. In the coming months, we hope that a new, completely rewritten edition will be available from WTFDA.

LOG TOTALS...All DXers reporting to the DX columns are asked to observe your club's new policy on log totals. Do not include them as part of the comments in your DX report; DX column editors are being asked to delete them and send them along to your STATISTICS editors, Bob Seybold and Fred Nordquist. This topic was much discussed at the 1982 and 1983 WTFDA conventions, and the consensus of the members was that the "stats" sections should be better supported, and that info on such log totals should be the domain of the STATISTICS columns. Your column editors do an extremely demanding job, and do it very well. To take at least some of the workload off the busy DX columns, the STATISTICS sections should be reported. Most VUD readers avidly compare statistics, and this can be best done in a "scoreboard" type of listing. We're sure no-one will object to the mention of a DXing milestone in a DX column, such as the logging of the 100th or 1000th station--but your exact totals belong in the STATISTICS columns.

ANARC UPDATE: A TV DXer at the ANARC Convention.....	3
FCC FM NEWS: WMFG, Hibbing MN has a run of bad luck.....	4
CENTRAL FM-DX: Ralph S. logs all of Indiana's commercial FMers!....	6
FM STATISTICS: The new distance and state stats are in.....	11
SOUTHERN FM-DX: It only took two years for a "grand" achievement!..	15
THE NONIMPORTANCE OF CAPTURE RATIO IN FM DXING: Is worse better?..	20
NORTHERN FM-DX: 7/24 proves to be the BIG skip day of '83.....	22
TELEVISION NEWS: RKO, in trouble with the FCC.....	33
WESTERN TV-DX: Great tropo in August.....	37
TV STATISTICS: Latest scoreboard; Mike Hollis' personal best.....	47
PHOTO NEWS: DXer's antennas are up a tree.....	48
EASTERN TV-DX: Excellent tropo in August.....	49
CCI(UNIDENTIFIED DX) Many unIDs, could be short skip.....	54

This month's cover by Harry J. Hayes.

ANARC UPDATE

Steven P. Sprachman
39-16 48 Street
Sunnyside, N.Y. 11104

Letter From ANARC '83 - A TV DX'er At The ANARC Convention.

My last article dealt with what happened at the ANARC Convention. This article deals with my reactions to being a TV DX'er among Shortwave radio DX'ers.

I must start with a qualification. I too am a Shortwave DX'er, but my first love is Television DX. I feel that had I not been a Shortwave DX'er, I would have been left out of most of the functions of the convention. I would have had no interest in any of the seminars. And, there would have been no other point for my being there except to promote WTFDA.

The reactions that I found from many of the Shortwave DX'ers I spoke to about TV DX is that it does not exist, it isn't worthwhile to try for, or it is not considered DX. It was hard for them to realize that there is a challenge in picking out an ID in the jumble of an Es opening. It was difficult to have them understand the excitement of getting a new station in a 500 mile Trop opening.

The lack of even a scheduled and publicized TV session in the "free-wheeling" DX sessions made me feel "sort-of" unwanted. They did realize that there may be some TV' DX'ers would attend the convention. They did have a sign-up sheet for the TV DX session. But, when the session took place, we had to fend for ourselves.

I realized that in a group like ANARC, that most of the functions must be geared towards Shortwave DX'ers. But, more could have been done to accommodate us and others who were interested in TV DX. Many people I spoke to had an interest in TV DX but had nowhere to go.

There are many things that we can do to ensure that we are accommodated at the next ANARC convention. First, we must remind the convention hosts that we will be there. We must help the hosts to accommodate us. We can provide names of people who can host a "free-wheeling" discussion. We can provide information for a seminar. We have to make sure that any forums dealing with TV DX are correctly publicized in the literature sent out by the hosts and by ANARC. The forums must not only be listed on the agenda, but they also must not be swept aside because something else has ran overtime.

AT the convention, our club must be visible. We must set up a booth selling VUD's and other literature about TV DX'ing (i.e. Beyond Shortwave).

As many members of WTFDA should attend a convention to talk about their experiences while TV DX'ing. We may want to hold an ANARC Convention ourselves. At that convention, we can provide a program on TV DX as well as the necessary Shortwave DX programs needed to draw a large crowd.

We must work on making the ANARC Convention a place to meet with and be considered equals with Shortwave DX'ers. They can learn from us and we can learn from them. And, maybe we will get some converts to TV DX'ing.

Next time, WTFDA and the Handicapped Aid Program (HAP). Until then, best of DX this fall season.

Steven P. Sprachman

CENTRAL FM

Ralph Strobel, editor
2300 E. McGalliard Rd.
Muncie, Indiana 47303
Deadline: the 7th

CENTRAL FM DX

Jeff Kadet - Box 20 - Macomb, IL 61455

OCTOBER 1983

Equipment: McIntosh MR-78; Stereo Probe 9 up 30 ft. Phone: (309) 833-1809

October 1983

Report to Central FM if you live in the central states of MN IA MO WI IL IN MI & OH

Bruce F. Elving, Ph.D. - Box 24 - Adolph, MN 55701

WXPR *91.7 Rhinelander WI, \$, chirping SCA; KFSI *88.5 Rochester MN often dominant through closer KBEM Minneapolis, and skip July 27: WCCF with \$stereo news, talk, Buies Creek NC *90.1 at 1132, and WRVL *88.3 Lynchburg VA at 1200. KMSU *89.7 Mankato MN with NPR and \$, mono WNCB *89.1 Duluth and \$stereo KDNW *90.5 Duluth both g, and CKSE- (numeral unknown) 89.1, French, Fort Frances ON, which often crashes through WNCB when I aim the antenna North. Nonidentifying CBQT 90.5 Fort Frances also comes through local KDNW at about 26 km when the antenna is aimed right. Other stations received: KKOK 95.7 Morris, KKEB-FM Bemidji MN 103.7 (\$, rock, strictly "KJ-104," except on the hour), and KZZA, or 'ZZA, as it is often called, 107.1 Glenwood MN, \$, rock. WAQE-FM 97.7 \$, r, Rice Lake WI finally counted. 73ily, Bruce

++++

Doug Dornbos - 931 Boon St. - Traverse City, MI 49684

Since I have never sent in a real DX report and since I am moving in two weeks, I thought I would send in a condensed version of my log for the entire time I have lived here (from 1-82 to 8-83). It is arranged here not so much for technical accuracy but more to show and share my DX'ing habits and accomplishments. Since I didn't DX before I moved here I am interested to see how a location change will affect things. (You don't mention where you are moving to. Where?-RS)

Total Stations

By Category:	By Month:	By Time of Day:	By Location:	Call letters heard on all log entries
Local stations- 6	Jan - 10	12 to 2 am -24	Michigan - 59	
Secondary " -10	Feb - 43	2 to 4 am - 1	Wisconsin - 25	
	Mar - 11	4 to 6 am - 0	Ontario - 3	
(See Editor's comments below)	Apr - 8	6 to 8 am - 1	Illinois - 3	
	May - 3	8 to 10 am - 3	Indiana - 1	
	Jun - 7	10 to 12 n - 7	Ohio - 1	
	Jul - 10	12 to 2 pm - 1	Unid - 1	
	Aug - 1	2 to 4 pm - 1		
	Sep - 0	4 to 6 pm - 1		
	Oct - 0	6 to 8 pm -14		
	Nov - 0	8 to 10 pm - 8		
	Dec - 1	10 to 12 pm -32		

Elevation of Traverse City: Approx. 600 ft.

Elevation of Surroundings : Rising from 1000 to 1100 ft. within 2 to 20 miles from town depending on direction.

Equipment: Advent 300 receiver, Winegard CPF bandpass filter, Channel Master Stereo Probe 9, Channel Master 9512 rotor. Antenna mounted at 34 ft.

(Editor's comments: If I type the totals you mention, they will only be deleted by the chief editor. Last month, I did mention Jeff Kadet's partial totals and that was even deleted. The idea is to send totals to Fred Nordquist's column. Anyone objecting to this should contact Dave Nieman-RS)



7/28 tr 0102 KCUR 89.3 MO Kansas City, s/off; 0200 KLJC 88.5 MO Kansas City, AN beaut. sacred mx preceded by ABC Info. Net. nx & wx. (235). 0254 WIBW 97.3 KS Topeka, "Topeka's 97-FM," WIBW-TV FM Vision promo (285). 0318 KFBD 97.7 MO Waynesville, "\$stereo B-98" (200). 0325 KTJW 98.5 MO Farmington, "Regional Radio J-98," k, (200). 0343 KAUS 99.9 MN Austin, wx, "FM-100 Country" (245).

7/29 tr 0108 WRLO 105.3 WI Antigo-Crandon, Larry King Show (325). 0125 KSFT 105.1 MO St. Joseph, "\$stereo Country-105" (225). 0151 WKIR 104.1 TN Jackson, "Giant 104-KIR" (305). 0208 KTXR 101.5 MO Springfield, b, "KTXR FM-101" (265). 0217 WAKQ 101.1 KY Russellville, d, "KQ-101" (325). 0223 WBDC 100.9 IN Huntington, Denny Spinner sports promo (240). 0230 WYEZ 100.7 IN Elkhart-South Bend, "In a class by itself, EZ, WYEZ-FM 100.7" (235). 0240 KGMO 100.7 MO Cape Girardeau, r, city referred to as "Cape" (225). 0320 KJAG 99.3 MO Gordonville, "Q-99," Pinpoint wx (225). 0500 WBKY 91.3 KY Lexington (365). 0500 WFPK 91.9 KY Louisville, s/on (345). Es 1520 KTEP 88.5 TX El Paso, 1738 KLAQ 95.5 TX El Paso, r, 1740 KFIM 92.3 TX El Paso, r (1030) tr 1800 KCMW 90.9 MO Warrensburg (200).

7/30 tr 0455 WROE 94.3 WI Neenah-Menasha, "Roe Radio" (pronounced "row") (270). 0530 WJNZ 94.3 IN Greencastle, sports (205). MS 0531 WZKB 94.3 NC Wallace, tentative, (Will never know for sure if it was them, as the exact moment I was turning the tape over, they Ided and I wasn't paying complete attention). (775). tr 0533 WEIC 92.1 IL Charleston, "FM-92" w/Cole Co. nx (145). 2144 WORT 89.9 WI Madison, "Smokey Joe's Cafe" show (180). 2253 WILL 90.9 IL Urbana, j (130). 2350 KTFP 91.1 IA Ft. Dodge, bluegrass festival (225).

7/31 tr 0007 KTFN 92.1 MO Trenton, Tina Kirchner DJ & s/off just a few mins. after local WCAZ s/off, (155), leaving... 0010 WMAD 92.1 WI Sun Prairie, r w/Chris Elliot DJ AN pgm., "92-MAD" (180). 0107 WLLI 96.7 IL Joliet, Summer Fun Givaway bumper sticker promo (145). 0234 WEMI 100.1 WI Neenah-Menasha, wx (270).

8/2 tr 1605 KWEN 95.5 OK Tulsa, Tulsa Co. nx (415). 1615 WQQC 90.3 IL Quincy, "The fine arts station of Quincy since 1974," 110 watts (55). 1648 KKRL 93.7 IA Carroll, r w/Ron Stevens DJ (245). 1728 KKKX 95.7 KS Ottawa, "96-X" w/Dick Stone DJ (280). 1745 KHLS 96.1 AR Blytheville, Cardinal BB promo & Dick Wilson DJ (320). 1815 KRIT 96.9 IA Clarion, remote f/Wright Co. Fair (220). 1902 KCOU 88.1 MO Columbia, r, 430 watts (145). 1957 WLSU 88.9 WI La Crosse, pledge drive phone # 782-1600 (225). 2006 KCLC 89.1 MO St. Charles, k (115). 2200 KHKE 89.5 IA Cedar Falls, wx (160).

8/3 tr 0030 KSUI 91.7 IA Iowa City, s/off (85). 0055 KCBW 92.1 MO Sedalia, album r w/Crystal DJ & s/off. These people give very few IDs. (190).

8/4 tr 0216 WRAY 98.1 IN Princeton, hard r w/Tri-City wx (225). 2018 KFJB 101.1 IA Marshalltown, "K-101, We've got country's best." (If that's the best, I'd hate to hear the worst) (155). 2026 WIXX 101.1 WI Green Bay, r (305). Trivia question of the month: What set of call letters has been used by more stations than any other? For instance, WIXX used to be on 1520 kc/s from FL. 2040 WGIL 101.5 IL Carbondale, Ramada Inn add, difficult thru WBNQ (210). 2107 WMDH 102.5 IN Newcastle-Muncie, Gaston Lions Club promo (270). 2140 KFRX 102.7 NE Lincoln, record store ad in Centrum Plaza (320). 2200 WTHI 99.9 IN Terre Haute, "If you love your country, you'll love Hi-99" (175).

8/5 tr 0100 WWRW 103.3 WI Wisconsin Rapids, "All the best mx 24 hrs. a day" (270). 0116 KYSM 103.5 MN Mankato, SID, k (300). 1707 WMUZ 103.5 MI Detroit, Rocky Peanut Co. Good nx (400). 1726 KJAN 103.7 IA Atlantic, Case Co. Fair Info. (235). 1730 KCHI 103.9 MO Chillicothe, AM & FM ID (160). 1731 KVCM 103.9 MO Montgomery City, traffic rpt. by local sheriff (120). 1750 WJWJ 103.9 IN Crown Point, inst. MoR/k mx, "W-Joy" (170). 1848 KBOE 104.9 IA Oskaloosa, Kentucky Fried Chicken k song contest promo (120). 1852 WSHY 104.9 IL Shelbyville, k (260). 1944 KONE 105.7 IA Waterloo (155). Had an unID on 105.9 too weak to ID, so turned off the radio to do other things, only to return @ 2258 to find it, WBWA, booming in. During the previous three hours a great tropes opening to the N materialized. Discovered that a good tr opening can be almost as hectic as an Es opening. 2258 WBWA 105.9 WI Washburn-Bayfield (440). 2307 KCHA 95.9 IA Charles City, nx w/Joan Downing (200). 2358 KZZA 107.1 MN Glenwood, nx, "ZZA-FM" (430).

8/6 tr 0000 KEEY 102.1 MN Minneapolis-St. Paul, "New FM-Country," also "K-102" (335). 0005 WVLJ 105.5 IL Monticello, s/off (110). 0020 KQRS 92.5 MN Golden Valley, r, "92-QRS" (335). 0023 WIMK 93.1 MI Iron Mountain, "Serving upper MI & NE WI" (385). 0030 KSTP 94.5 MN St. Paul, r, "KS-95" (335). 0103 WIZM 93.3 WI LaCrosse,

- Continued -

8/6 tr cont'd: "Z-93" (225). 0132 WAUC 105.1 MN Duluth, "Continuous country FM-105" (445). 0200 WIFF 105.5 IN Auburn, Mutual nx (290). 0210 WXRK 105.5 IL Woodstock, "X marks the spot," "The Star Station," "X-105." No legal ID given on the hour, so I had to call them up on the phone to see if it was them (can they be as bad as WQQM 106.3 which I have never heard give a legal ID?) (165). 0251 KJJY 106.3 IA Ankeny, k, w/Charlie Daniels featured album promo (180). 0326 KBEM 88.5 MN Minneapolis, r, w/"Ready, Set, Go Show," serving BoD special school district #1. (335). 0430 WJKL 94.3 IL Elgin, "94-Great Mx Club" promo & end of Larry King Show (155). 0446 WGHN 92.1 MI Grand Haven, Tri-City wx (280). 0508 WHIO 99.1 OH Dayton, "The smooth relaxing mx of WHIO FM-99" (340). 0516 WSTR 99.3 MI Sturgis, r album cuts, AM & FM ID (280). 0530 WEXU 88.9 KY Richmond (380). 0556 WXMJ 103.9 IN South Bend (235).

8/7 tr 2300 WLNK 106.3 IL Lansing, "FM-106" w/J+T Gospel hour (175).

8/8 tr 0257 WZEW 103.7 WI Wauwatosa-Milwaukee, "FM-107," "easy" (225). 0306 WWIB 103.7 WI Ladysmith, end UPI nx then rel. inspirational mx. These two were flukes as extreme pests KIIK & WDBR were both off - this was a NM - but KIIK came back on @ 0307. Don't know how long both were off together. (340). 0410 WAOP 100.9 MI Otsego, "101-FM" w/Kalamazoo Valley wx (280). 0422 WRKR 100.7 WI Racine, r, wx (205). 0502 WCCQ 98.3 IL Crest Hill, "FM-98.3" (175). 0528 KSTG 97.7 MO Sikeston, nx w/Kelly Keith (255).

8/9 tr 0217 WRTB 96.7 IN Vincennes, r, w/frequent non-ID as "Hit-96" (210). 0245 KMBR 99.7 MO Kansas City, U. of KS travel tips (230).

8/10 tr 0112 WNNW 98.5 MI Coldwater, k w/DJ named "Mushmouth" & Dick Jensen wx (300). 0128 WZND 99.3 MI Zeeland, "Super-ZND" w/Mx Country Net. (275). 0144 WDDC 100.1 WI Portage, "FM-100" w/ABC nx & washer givaway promo (225). 0445 WBCS 102.9 WI Milwaukee, k, "FM-103" (225). 0500 WIAA 88.3 MI Interlochen, Traverse City wx (375). 0500 WKKB 92.1 WI Manitowoc, SID & WKKB Soundoff (295). 0507 WCSG 91.3 MI Grand Rapids, Mike DeVries w/Kent Co. airport temp. (300). Then my first Canadian by tropes: 0512 GJOM 88.7 ON Windsor, wx, ON Double-Bonus Drawpromo & ID as "OM Radio 88.7" (pronounced like "ohm") (485). 0531 WHTC 96.1 MI Holland, "FM-96," wx, then b (275). 0652 WSJY 107.3 WI Atkinson-Janesville, "The mx of Joy-FM 107" (165). 0705 WYMS 88.9 WI Milwaukee, "Jazz Plus Milwaukee Show (225).

8/11 tr 0230 WNB 97.1 IL Chicago, g (175). 0250 KSYZ 107.7 NE Grand Island, r (400). 0340 KNZA 103.9 KS Hiawatha, "KNZA, your wx station" (255). 0445 WLOL 99.5 MN Minneapolis, r (335).

8/12 ms 0200-0430 92.1 Sat on the freq. w/ant. due E during peak of the Perseids Shower, but the only thing close to an ID was a "X-92" @ 0203; this with rarely a 10 second breather between some type of burst, some lasting as long as 20 seconds (is this foolishness worth it? Hi.) (Next time choose a class B/C frequency which is vacant. Eventually an ID will be heard by ms. I have IDed 35 stations by this method and it does work. Finding the proper frequency to be on is important.RS)

8/12 tr 1906 KIOV 104.7 SD Sioux Falls, k (375). 2102 WYHY 107.5 TN Lebanon-Nashville, "Y-107," w/WYHY 20 min. mx sweep (365). 2135 WIMZ 103.5 TN Knoxville, r, "Knoxville's High FM for the 104 days of summer" (470). 2139 WBLZ 103.5 OH Hamilton Bailey Turner for City Council ad (325). 2337 WMC 99.7 TN Memphis, r w/Phil Collins DJ (375).

8/13 tr 0000 KFUD 99.1 MO Clayton, classical mx serving greater St. Louis (130). 0041 WSM 95.5 TN Nashville, "Nashville-95" MS 0200-0400 99.3 Sat on the freq. w/ant due E & actually got an ID... 0300 WSEF 99.3 PA Harrisburg, caught "...on WSEF Harrisburg" (750). tr 0500 WETS 89.5 TN Johnson City, s/on f/E. TN State U. (530). 0500 WNBW 88.9 TN Chattanooga, wx (475). MS 0530 WKTC 104.3 NC Tarboro, caught - "...located on highway 44 west between Tarboro..." (775). tr 0555 WMYU 102.1 TN Sevierville, r (475). 0645 WMLW 94.1 WI Watertown, "Mellow-94" w/Watertown Memorial Hosp. Health Fair promo (215).

8/14 tr 1930 KWPM 93.9 MO West Plains, Ntl. Mx Survey (255). 2058 WBFM 97.7 IL Effingham, "Your Christian Radio Station" (150). 2100 WRPL 95.3 IL Rantoul, wx (125). 2218 KZZC 98.9 KS Leavenworth, r, "Z-99" (240).

8/15 tr 0200 KKYK 103.7 AR Little Rock, KIIK & WDBR again off (410). 0212 KOKQ 98.5 IA Council Bluffs, "Sweet-98, Still #1" (275). 0255 KLXL 102.3 IA Dubuque, k, "FM-102" (140). 0315 WGRM 103.9 IL Dundee, "FM-104" (150).

8/16 tr 0100 WEPN 88.1 IL Wheaton, s/off w/Drew Grant anncr., 250w (150).

8/17 tr 0207 WTUE 104.7 OH Dayton, "TUE," r (335). 0230 WIKY 104.1 IN Evansville, "104-FM," MoR

- Continued -

8/18 tr 0400 WISQ 100.1 WI West Salem SID, wx, "100-FM" (225). 0420 KAGE 95.3 MN Winona, SID, "KG-FM" (245). 0425 WIAL 94.1 WI Eau Claire, r, "I-94" (300). 0432 WDAY 93.7 ND Fargo, "Color Wx Radar," "94-FM," "Y-94" (535). 0432 WTEX 93.9 MN Hibbing, "94-X" (495). 0437 CBQT 90.5 ON Ft. Francis, "Great Northwest Show," // 800 kc/s. (580). 0458 UNID MN MN Public Radio stations // 88.5, 89.5, 91.1 & 91.7 (KLSE). Have written to KLSE for possible IDs. 0458 WAYL 93.7 MN Minneapolis-St. Paul, b mx (335). 0500 KFNW 97.9 ND Fargo, gospel, then UPI nx (535). 0510 WAQR 97.7 WI Rice Lake, wx w/John Dooley (350). 0530 WRST 90.3 WI Oshkosh, called up station, 960w (255). 0538 WCOM 97.1 WI Sparta, k (240). 0546 KRIS 98.5 MN Minneapolis, Twin cities wx (335). 0600 WGBM 102.3 WI Viroqua, "FM-Viroqua" & Crawford Co. Fair promo (215). 0602 WLXR 104.9 WI LaCrosse (230). 0609 KXLV or KXLB MN 105.5, "FM-105," serving E. Central MN QTH??? (I have ID on tape). 0615 WNNC 107.1 WI Wisconsin Dells, r, Gary Boss w/nx (215). 0628 KLI2 107.5 MN Brainerd, "Big K" wx w/Mike Jay (445). 0635 KKWS 105.9 MN Wadena, "K-106" (465). 0655 WRVM 102.7 WI Suring inspirational mx (340). 0700 WIXN 101.7 IL Dixon, "Your place in the country" (105) 0705 KBHP 101.1 MN Bemidji, nx (525). 0720 WTMB 98.6 WI Tomah, off freq. Should be on 98.9. Would have normally been impossible to get due to NSP WHBF (240). 0730 KNXR 97.5 MN Rochester, nx (260). 0735 KWKK 96.7 MN Rochester, k, then nx (260). 0744 WJMC 96.3 WI Rice Lake, nx (350). 0758 WYUR 95.9 WI Ripon, "FM-96," instr. mx (245). 0816 WBKV 92.5 WI West Bend, instr, mx (235). 0820 KFST 88.5 MN Rochester, "beautiful, sacred mx" (260). 0700-0945 CJBC-2 89.1 ON Ft. Francis, FF CBC program-ming. Signal was so strong, I had trouble believing it was really them. Antenna location must be super towards the S. (580).

8/19 tr 0459 WAUS 90.7 MI Barrien Springs, think they had just had s/on (240). 0500 WKAR 90.5 MI East Lansing, ditto above. (345).

8/21 tr 0015 WNDU 92.9 IN South Bend, "U-93" (230). 0042 WZZR 95.7 MI Grand Rapids, Radar wx phone line #784-1111. 0043 WJBL 94.5 MI Holland, g. 0147 KZZL 99.5 IA LeMars, b, called up station (325). 0200 WIVQ 100.9 IL Peru, s/off (100). 0220 WKSI 102.3 IL Eldorado, r, "Kiss-102" (220). 0300 KKUZ 102.5 MO Joplin, r (320). 0345 WTCM 103.5 MI Traverse City, k (385). 0355 WOSH 103.9 WI Oshkosh, "FM-10" w/John Allen DJ. 0447 WOMC 104.3 MI Detroit, tentative, u/o WJEZ. (Detroit is in an almost direct line w/Chicago), "Metro Magazine" program w/mention of MI, then r after 0500 (400).

8/22 tr 0445 K274AA 102.7 IA Eldridge, //KUNI, my first xltr & 10 watter (80). 0530 KUCB 89.3 IA Des Moines, s/on (175).

8/23 tr 0230 KSJN 91.1 MN St. Paul (335). 0300 KWIT 90.3 IA Sioux City (325). 0345 WNNN 96.1 MI Bay City-Saginaw, r, "Win-96" (390). 0404 WEHB 89.9 MI Grand Rapids, wx, k, 390w. 0410 WKCC 98.1 MI Saginaw, k, "KCQ stereo Country." 0415 WGRD 97.9 MI Grand Rapids, r. 0430 WVGR 104.1 MI Grand Rapids, s/on. 0430 WGER 102.5 MI Bay City-Saginaw, b. 0456 WEMU 89.1 MI Ypsilanti, end of "Jazz Scope After Hours" w/George Klein (375). 0730 WLUV 96.7 IL Loves Park, rough thru WSEY (145). 0739 WJVL 99.9 WI Janesville, Janesville Gazette ad (165).

In last month's report I said that WLRK 100.1 was my closest unheard. That should be amended w/WWQC 90.3 (since heard), WCIC 91.5 (54) 35000w directional. Are they on the air? (I can't find them here, and I've tried-RS), WQMA 88.3, 410w (68), KALA 88.5, 100w (72), plus a KUNI xltr on 94.5 (72). 73.

Bob Zent - 1835 Fruit St. - Huntington, IN 46750

8/12 MS
0115 WJML 98.9 MI Petoskey, 275
"...Stevie Nicks at the mx station JML..."
0116 WBGH 98.9 FL Tallahassee, 720
"...770 downtown. And uh, we've got Billy Joel and Allentown. We're Tallahassee's favorites on FM-99..."

8/13 tr
0100 KPTM 98.9 MO Kennett, ID 400
8/13 MS
0102 WUSL 98.9 PA Philadelphia, ID 515
0310 KWLW 93.9 TX San Angelo, calls 1045
0350 KIL0 93.9 CO Colorado Springs, 1005
"...That was Pink Floyd from the Wall here at Kilo-94..."

8/14 MS
0325 WKYS 93.9 DC Washington, 450
"...93-KYS. Isley Brothers, I Don't Want Much....You..."

8/18 tr
2220 WJBD 100.1 IL Salem, 245
local ad & call letters

8/21 tr
0020 WELA 104.3 OH East Liverpool, ID 230
0042 WDDC 100.1 WI Portage, calls 260
0200 WCRH 90.5 MD Williamsport, ID 390
0210 WTCR 103.3 WV Huntington, 225
New call letters and format
0401 WGLL 91.1 MI Houghton, ID 430
(Time is CDT)

- Continued -

8/22 tr 0635 WGNR 88.9 MI Grand Rapids, ID, 135 new station (New underlined)	8/24 tr 2300 WJYE 96.1 NY Buffalo, ID 355 2314 CKO-2 99.1 ON Toronto, 340 CKO network promo
--	--

This is the first time I really made a serious effort at meteor DX. I'm pretty impressed with the results. Got some nice bursts, some as long as two minutes. A few of these stations I had logged previously via E-skip or tropo. Antenna was pointed southwest. Unfortunately, there are very few channels that are open enough to be useful for MS these days. Anyhow, I have all of this on tape. Will try again in December.

Ralph Strobel - 2300 E. McGalliard Rd. - Muncie, IN 47303

8/13 tr 2200 WBNI 107.1 IN Boonville, r 200 Finally! (See comments)	8/20 tr 2259 WEKZ 93.7 WI Monroe, b\$ 275 2345 WTKM 104.9 WI Hartford, 260 polkas, mono
--	--




8/14 tr 0202 KZZC 98.9 KS Leavenworth- "ZZ-99" Kansas City, rp\$ 525	8/21 tr 0001 WDUQ 90.5 PA Pittsburg, s/off 280 0112 KSJN 91.1 MN St. Paul, j\$ 520 0200 WEMI 100.1 WI Neenah-Menasha, g\$ 310 0301 WGGI 91.1 MI Houghton, j\$ 500
---	---

8/15 MS 0334 KZZC 98.9 KS Leavenworth-KC, 525 "...When ZZ-99...stars..."	8/24 tr 2130 WGGN 97.7 OH Castalia-Sandusky, 140 (Ant. aimed W) g mono
---	---

8/19 tr 0434 WXKI 91.5 NY Rochester, wx 425 0530 WGMR 88.9 MI Grand Rapids, g\$ 180 300w good signal!, "Good News Radio"	8/30 MS 0135 UNID 98.9 ?? Seven seconds gave: "...first location at 6433 NW 39th at Spencer. The KZBS people's choice..." (Possible KQVS or KCBS, hard to tell)
---	--

0600 WCXL 89.3 OH Dayton, g mono 87 200w poor signal!, ex-88.7, WFPL off	8/20 tr 1000 WOJB 88.9 WI Reserve, 525 not Hayward, \$
--	---

After thousands of tries, WBNI Boonville, IN, my most wanted station, faintly heard over WGRY Danville, IN with good ID's on 107.1. All class A, B, and C stations in Indiana are now logged and taped. Only three Indiana stations remain unheard. They are 10 watters in Chesterton, Howe, and Valparaiso. Will I ever hear them? I doubt it! Now my most wanted station is WGSJ 104.7 in Morris, IL. This station must have a horrible signal also, as I've tried for it thousands of times and no luck 173, Ralph

 <p>UNIVERSITY OF MISSOURI-COLUMBIA</p> <p>P.O. Box 758 Columbia, MO 65205</p>	 <p>WKMS FM 91.3</p> <p>Murray State University Murray, Kentucky 42071</p>	 <p>WBRT - WOKH 103 West Stephen Foster Avenue Bardstown, Kentucky 40004</p>

FM STATIONS

Fred Norquist
7945 Boxford Road
Clay, NY 13041

OCTOBER 1983

ALL TIME FM DISTANCE RECORDS		MILES DXER LOC		PROP CALL LOCATION		MILES DXER LOC	
NO.	PROP	CALL	LOCATION	FREQ.	PROP	CALL	LOCATION
88.1	Es	WCRP	PR Guayama	2300 D.Bu	OK	90.9	Es KCMW MO Warrensburg 1510 J.Je CA
	Tr						Tr KUNI IA Cedar Falls 820 F.No NY
	MS	KTXT	TX Lubbock	1140 F.Me	OH		MS KCMW MO Warrensburg 885 L.Vo VA
	Au	WUTC	TN Chattanooga	665 D.Ni	NY		Au KUNI IA Cedar Falls 600 F.Me ND
	Es	KSUC	TX Keene	1430 J.Je	CA	91.1	Es JEC-2 Jam.Cooper's 1940 J.Pi NM
88.3	Tr						Tr WFAM FL Jacksonville 1020 G.Ha TX
	MS	WRBH	LA New Orleans	1105 D.Ni	NY		MS KSJN MN New Brighton 1130 G.Ha TX
	Au	WAER	NY Syracuse	675 A.Bo	IL		Au WVUE IN Vincennes 745 F.Me ND
88.4	Es	TGRT	Guatemala, Guat	1130 G.Ha	TX	91.3	Es WTPR PR San Juan 1820 C.Ho OH
88.5	Es	KPLU	WA Tacoma	1505 D.Bu	OK		Tr WTHS FL Miami 1155 G.Ha TX
	Tr	WRAS	GA Atlanta	890 G.Ha	TX		MS WHHI WI Highland 740 L.Vo VA
	MS	WDDC	NC Winston-Sal	1160 G.Ha	TX		Au WCNY NY Syracuse 525 R.Br MI
	Au	WAMU	DC Washington	920 J.Eb	MN	91.5	Es XHJC BCN Mexicali 1450 J.Eb MN
							Tr WFSU FL Tallahassee 840 R.Sa TX
88.7	Es	WERN	WI Madison	1730 J.Je	CA		MS WHMD WI Suring 1220 G.Ha TX
	Tr						Au WRPI NY Troy 505 F.Me MI
	MS	WHA	WI Madison	1080 G.Ha	TX	91.7	Es KRSW MN Worthington 1435 J.Pi CA
	Au	WRA	WI Madison	685 F.Me	ND		Tr KOSU OK Stillwater 790 B.El MN
	Es	TGRT	Guatemala, Guat	1130 G.Ha	TX		MS KOSU OK Stillwater 880 F.Me ND
88.8	Es						Au KRSW MN Worthington 855 D.Ni NY
88.9	Es	WEKU	KY Richmond	2000 J.Pi	CA	91.9	Es WSIU IL Carbondale 1725 J.Pi CA
	Tr						Tr WSIU IL Carbondale 810 G.Ha TX
	MS	WKES	TN Chattanooga	875 G.Ha	TX		MS WHRM WI Rib Mountain 1005 R.Wo LA
	Au	WMSW	TN Chattanooga	740 F.No	NY		Au WSIU IL Carbondale 750 F.Me ND
	Es	YSRI	ES San Salvador	1215 P.Dy	TX	92.0	Es XEBJ Cd Victoria, Tams 895 G.Ha OK
89.0	Es					92.1	Es CJAY AT Calgary 1750 D.Ni NY
	Tr						Tr CKY MB Winnipeg 840 F.Me MI
	MS	KFAE	WA Richland	610 J.Je	CA		MS WJGA GA Jackson 930 S.Gr IA
	Au	KMUW	KS Wichita	640 R.Br	MI		Au WYKE WI Sun Prairie 260 A.Bo IL
89.2	Es	XEJT	Tampico, Tams	990 G.Ha	OK	92.15	Es CMBC Habana, Cuba 1330 G.Ha OK
89.3	Es	WDLM	IL E. Moline	1670 J.Je	CA	92.3	Es WDBO FL Orlando 1740 F.Me ND
	Tr	WPCS	FL Pensacola	800 R.Br	MI		Tr WDBO FL Orlando 1065 G.Ha TX
	MS	WKHW	WI Chilton	1165 G.Ha	TX		MS WKLH AL Montgomery 1050 J.Eb MN
	Au	WCAL	MN Northfield	715 S.Ch	ON	92.5	Au KLIQ OR Portland 1030 F.Me ND
	Es	TGD	Guat. Quetzalt	1095 G.Ha	TX		Es WPAP FL Panama City 1505 F.Me ND
89.4	Es	KENW	NM Portales	1460 D.Ni	NY		Tr KYND TX Pasadena 985 R.Br MI
89.5	Tr	KENW	NM Portales	965 J.Ay	TN		MS KAPM TX Dallas 1450 J.Je CA
	MS	WNIU	IL DeKalb	1035 G.Ha	TX	92.7	Au WMHE OH Toledo 750 F.Me ND
	Au	WPKV	CT Bridgeport	790 A.Bo	IL		Es
89.6	Es	TGDX	Guatemala, Guat	1130 G.Ha	TX		Tr KJEF LA Jennings 650 J.Pi NM
89.7	Es	XHRA	Jal. Guadalajara	1570 A.Bo	IL	92.9	MS WDUX WI Waupaca 430 P.Sa ON
	Tr	WMCU	FL Miami	1155 G.Ha	TX		Au KERX NE O'Neill 430 F.Me ND
	MS	EGCC	TX Denison	1120 L.Vo	VA		Es WSCD MN Duluth 1640 J.Je CA
	Au	WGBH	MA Boston	905 A.Bo	IL		Tr WELX AL Mobile 890 N.Di MD
89.9	Es	WJCT	FL Jacksonville	1625 F.Me	ND		WZCG GA Atlanta tie G.Ha TX
	Tr	WJCT	FL Jacksonville	1020 G.Ha	TX		MS KITTY TX San Antonio 1235 C.Ho OH
	MS	WHSA	WI Brule	905 L.Vo	VA	93.1	Au WVNY VT Burlington 855 A.Bo IL
	Au	WHSA	WI Brule	505 F.Me	MI		Es KAMA TX El Paso 1280 N.Di MD
90.0	Es	YSU	ES San Salvador	1205 G.Ha	TX		Tr WDDS NY Syracuse 820 B.El MN
90.1	Es						MS XBHB SD Sturgis 1175 R.Wo LA
	Tr	KPFT	TX Houston	860 J.Co	FL	93.2	Au WDRQ MI Detroit 540 J.Eb MN
	MS	WHBI	IL Chicago	1065 G.Ha	TX		Es XHQQ NL Monterrey 1375 R.Br MI
	Au	KSJR	MN Collegeville	760 S.Ch	ON	93.3	Tr XHQQ NL Monterrey 265 G.Ha TX
	Es						Es KTEN OK Ada 1435 R.St MA
90.3	Tr	WHLA	WI Holmen	800 L.Vo	VA		Tr WFLA FL Tampa 995 G.Ha TX
	MS	WHLA	WI Holmen	1085 G.Ha	TX		MS KYKR TX Port Arthur 1195 P.Sa ON
	Au	WBCL	IN Ft. Wayne	705 F.Me	ND	93.5	Au WBSW OH Youngstown 680 J.Eb MN
	Es	R. Jamaica	Spur Tree	1930 J.Pi	NM		Es KLKC KS Parsons 1440 J.Je CA
90.5	Tr	WKAR	MI E. Lansing	930 R.Wo	LA		Tr KRFG MO Greenfield 625 F.Me OH
	MS	KXCV	MO Marryville	970 F.No	NY		MS WHJT MS Clinton 940 P.Sa ON
	Au	CBHA	NS Halifax	980 F.Me	OH		Au WLIH WI New London 340 A.Bo IL
	Es	KOBC	MO Joplin	1495 J.Je	CA	93.7	Es WJIT PR San Juan 2275 R.Co OK
	Tr	KVNO	NE Omaha	900 D.Ni	NY		Tr KBNO TX Houston 1090 C.Ho OH
	MS	WHAD	WI Delafield	885 W.Bi	FL		MS WCCY MA Lawrence 1475 R.Co OK
	Au	KWU	MO St. Louis	835 J.Fe	NJ		Au KWYR SD Winner 655 A.Bo IL

Table with columns for call sign, frequency, location, and number. Includes entries like 8/17 Es, 2002 KDKR, 2004 unID, etc.

Table with columns for call sign, frequency, location, and number. Includes entries like 8/17 Es, 2045 KXBI, 2046 CKUA-3, etc.

Well, another year at this location(2 yrs. now), and Es talling off fast, fall tropes around the corner. (congrats on 1000+! -hq) Highlights were 2 hop to Jamaica and long single to Kingston, ON, and some of the most intense Es on FM ever witnessed.

Tim McVey, Route 3, Box 568, Bolivar, TN 38008 (club address) CDT Summer 1983

Equip: Pioneer F-5 digital tuner with homemade SCA decoder and headphone amp; a \$3.95 version of a 39 cents dipole antenna. All of this report is new loggings ACTUALLY MADE in Huntsville, AL in an apartment in Jones Valley.

Table with columns for call sign, frequency, location, and number. Includes entries like 7/7 tr, 0626 KTXR, 7/11 Es, etc.

Table with columns for call sign, frequency, location, and number. Includes entries like 7/24 Es, 2223 KTTL, 2226 KSID, etc.

Bill Townshend, 4500 Conn. Ave. NW #901, Washington, DC 20008 EDT

Table with columns for call sign, frequency, location, and number. Includes entries like 7/30 tr, 2000 WCRH, 8/2 tr, etc.

Table with columns for call sign, frequency, location, and number. Includes entries like 8/16 tr, 0821 WSUX, 8/22 tr, etc.

WHFS 102.3 is now dark. I caught the s/off at 0004 EDT Fri. 7/15. It may come back on the air again in mid-September as WTKS with a talk format.

NORB 3FM CONT.

John Jefferson, 4016 Crest Ct., Pleasanton, CA 94566 - 1/24 to 8/4

The skip season has been an erratic one, with one spectacular May event and a hot late June, but also 2 solid weeks in mid-June with just one logging and 3 in July also with but one logging.

Large table with columns for call sign, frequency, location, and number. Includes entries like 1/24 tr, 0752*KFAC, 0910 KGON, etc.

cont.

6/22 Es
 1839 KAWL 104.9 NE York, loc. ad 1320
 1841 KBYZ 107.7 NE Grand Island, calls, ad
 1851 KBUL 107.1 CO Brush, K-Bull, 980
 Brush refs.
 1355 KAZY 106.7 CO Denver, calls
 1858 KQKY 105.9 NE Kearney, loc. ads. 1230
 1900 KLCO 104.3 CO Longmont, ID 915
 1901 KSTC 104.7 CO Sterling, ID, (last 1015
 heard on 96.7)
 1906 KSDY 95.1 MT Sidney, wx, ann. name
 2114 CBRP4? 91.9 SA Bellegarde, FF
 2120 KIZZ 93.7 ND Minot, Z-94, Minot ref.
 2144 CKUAL3 91.3 AT Drumheller, j, ann.
 2200 CBY 90.9 AT Edmonton, CBC ID and
 Edmonton ref.
 2202 CBYG 91.5 BC Prince George, c 1140
 2235 CHFA5 90.5 AT Grande Prairie, CBC
 French ref. & c 1300
 2250 KIZZ 93.7 ND Minot, Z-94 & loc. ref.
 2250 KEYA? 88.5 ND Belcourt, garbled
 6/23 Es
 1105 KSEC 93.3 CO Lamar, Lamar ref 1015
 1119 KTAP 103.9 NE Crete, local LL BB 1350
 1121 KYGB 104.3 KS Great Bend, ads 1225
 1130 KJLS 103.3 KS Hays, nx 1200
 1131 KTIQ 102.7 CO Manitou Springs 915
 1146 KBFI 105.9 CO Denver, calls, time
 1149 KSTC 104.7 CO Sterling calls
 1151 KNDY 103.1 KS Marysville, ID
 1153 KZMC 105.3 NE McCook ads 1110
 1200 KHAT 106.3 NE Lincoln, ID 1360
 1200 KXCV 90.5 MO Maryville, ID 1440
 1213 KUCV 90.9 NE Lincoln calls
 1215 KIGX 95.9 NE McCook, wx, calls
 1236 KOGA 99.7 NE Ogallala, local refs.
 1246 KSRD 96.9 NE Seward, calls 1340
 1252 KFRX 102.7 NE Lincoln, calls
 1254 KJNR 89.7 IA Council Bluffs, calls
 1259 KOKI 101.1 NE Columbus, calls 1330
 1306 KROA 97.7 NE Grand Island, loc. refs
 1321 KRIG 98.1 OK Lawton, calls 1310
 1323 KHEM 94.7 NE Norfolk, calls 1290
 1326 KGBS 96.1 CO Greeley, calls 930
 1352 KBLN 97.1 NE North Platte, ad, calls
 1354 KSID 98.7 NE Sidney, ID
 6/24 Es
 1032 KYXS 95.9 TX Menard Wells, calls
 1034 KSUC? 88.3 TX Keene, TX nx, g
 1038 KLVU 98.7 TX Dallas, K-Love 1425
 1042 KTCU 88.7 TX Ft. Worth, c, TCU ref.
 1104 KTFN 93.3 OK Ada, ad, calls 1385
 1110 KEBC 94.7 OK OKC, OK ad 1355
 1111 KOKF 90.9 CO Edmond, ID 1355
 6/26 Es
 1443 KCMT 100.7 MN Alexandria, psa 1435
 1459 KIGX 95.9 NE McCook, local ref.
 1449-1517 KUCV? 90.9 NE Lincoln, c, no
 fading observed!
 1529 KINF 89.7 IA Council Bluffs, loc ref
 1530 KOUR 89.3 MO Kansas City, ID 1450
 1540 KTAJ 103.9 NE Crete, loc. ref
 1543 KYLN 94.1 NE Omaha, ID 1395
 1547 KQCR 99.9 NE Omaha, calls
 1603 KBBH 106.3 NE Blair, calls 1385
 1610 KSEZ 97.9 IA Sioux City, calls 1395
 1622 KLGH 98.7 MN Pipestone, loc. ref. 1380
 1623 KHEZ 99.1 NE Mankato, loc ref 1495
 1628 KYSM 103.5 MN Mankato, loc ads
 1645 KUCA 95.1 MN Worthington 1290

6/26 Es 1480
 1648 KMLP 93.1 MN New Ulm loc. ref, calls
 1653 KXKL 92.9 ND Grand Forks, loc refs XL93
 1658 KQBE 90.7 MN Moorhead, ads 1405
 1701 KYTH 94.7 ND Grand Forks, ID
 1708 KFSH 39.3 ND Grand Forks, ID
 6/27 Es
 2000 KMLW 93.9 TX San Angelo, ID 1285
 2000 KILL 90.1 SD Porcupine, ID 1085
 (How's that for variety?)
 2005 KSDZ 95.5 NE Gordon, calls 1065
 2010 KVDB 94.3 IA Sioux Center, loc. nx 1400
 2020 KXNF 103.5 NE North Platte, RX-103
 2023 KGOR 99.9 NE Omaha, calls
 2110 KXCV 90.5 MO Maryville, calls
 2116 KIGS 91.5 NE Omaha, Omaha ref
 6/28 tr
 0030 K232AH 94.3 CA San Luis Obispo, 170
 (verified, only KEAR xlator on 94.3)
 Es
 1304 CBRP4? 91.9 SA Bellegarde, FF
 6/30 Es
 0805 KXCV 90.5 MO Maryville, calls
 0808 KLGH 98.7 MN Pipestone, loc refs
 0828 KESD? 88.3 SD Brookings, SD ref
 0833 KWOA 95.1 MN Worthington, loc ref
 0837 KUSD? 89.7 SD Vermillion, c, // 88.3
 0849 KBGF 95.5 IA Sioux City, loc ref
 0913 WDAY 93.7 ND Fargo, "Y-94, Fargo-
 Moorhead" 1405
 0916 KCMT 100.7 MN Alexandria, loc refs
 0921 RYYY 92.9 ND Bismarck, calls 1230
 0929 KDSU 91.9 ND Fargo, loc refs
 1000 KUCV 90.9 NE Lincoln, ID
 1004 KCBI 100.7 NE Omaha, Omaha ref
 1008 KSFI 105.1 MO St. Joseph, calls 1435
 1016 KMAZ 92.9 NE Beatrice, loc ref 1350

(Unlike last year, which featured a terrible
 June and a fabulous July, this year things
 are rather lean in July.)

7/1 Es
 1138 KIXY 94.7 TX San Angelo, ads 1285
 1152 KYXS 95.9 TX Mineral Wells, calls 1355
 1153 KLVU 98.7 TX Dallas, K-Love 1425
 1216 KFAH 106.3 TX Hereford, ref 1085
 1219 KVRP 95.5 TX Haskell, ref 1270
 1238 KORC 100.7 TX Abilene, ref 1275
 1244 KFTE 92.3 TX El Paso, calls 970
 1246 KSET 94.7 TX El Paso, calls
 1249 KMFM 92.3 TX Midland, calls 1175
 7/2 Es
 1906 CBX 90.9 AT Edmonton, CBC nx in \$ 1175
 1907 CKC6?101.9 AT Edmonton, talk
 1917 CHFA2?103.5 AT Red Deer, FF
 1926 CHFA5?90.5 AT Grande Prairie, FF
 1935 CBK4? 89.7 BC Dawson Creek, j
 1937 CBUS? 91.3 BC 100 Mile House, j //89.7?
 2000 CBUS 91.3 BC 100 Mile House, CBC Radio
 // 89.7, 91.5 985
 2001 CBK2 89.7 BC Dawson Creek 1325
 2005 CBYG 91.5 BC Prince George, CBC R. C.
 2011 CBYE 92.9 BC Logan Lake, k, // CBYG
 2015 CBUP4?95.5 BC Prince George, FF
 2018 CBYM 90.9 BC Kersley, k, // CBYG
 7/4 Es
 1002 KERG 94.7 OK OKC, OKC ref. 1255
 1028 KYNB 95.9 OK Frederick 1270
 1050 KQBE 104.3 TX Borger, calls 1145
 1100 KSLX 94.3 TX Segmour, ID 1285

cont.

7/4 Es
 1101 KVRP 95.5 TX Haskell, ID 1270
 (becoming a nuisance!)
 1104 KAZL 92.5 TX Dallas, calls
 1137 KLYT 88.3 NE Albuquerque, K-Light 875
 1147 KGNZ 88.1 TX Abilene, L
 1828 KMHF 92.9 TX Wichita Falls, calls 1320
 7/5 Es
 0706 KRSL 95.9 KS Russell, loc refs 1200
 0730 KJOD 99.5 CO Denver, calls 915
 0742 KREL 97.1 NE North Platte, calls 1120
 0745 KHEM 94.7 NE Norfolk, calls 1120
 0748 KMLL 103.9 NE Ord, Ord ad 1235
 7/6 Es
 1113 KMFM 92.3 TX Midland, Odessa ref
 1121 KSEL 93.7 TX Lubbock, calls
 1141 KVRP 95.5 TX Haskell, Haskell ref
 7/19 Es
 0835 KLUI 97.9 OK Foteau, OK nx net, 1495
 E, phone verie 1495
 0836 KML? 99.5 IA Douglas, Douglas (logged
 this in '81, so no followup on it)
 0842 KTEK 93.3 OK Ada, Ada ref
 0908 KAYE? 90.7 OK Tonkawa, E (No way John,
 more likely Joplin, MO's KOBC, EB.)
 0935 KKMZ 92.5 OK OKC, OKC ref
 0938 KMIN 92.9 TX Wichita Falls WF ref
 0954 KIXY 94.7 TX San Angelo, calls 1285
 0955 KBIL 92.9 TX San Angelo, calls
 1012 unID 95.5 L mx & SS ann.
 7/25 Es
 0637 KLAQ 95.5 TX El Paso, KCID-TV ad
 7/27 Es
 1829 KIGX 95.9 NE McCook, McCook ref 1110
 1835 KEBC 94.7 OK OKC, OK ad
 1839 KJLL 104.9 OK Bethany, ID 1350

Danny Buntin, 1312 E. Skyline, Stillwater, OK 74075 CDT

8/14 ex. gw
 2001 KMSZ 95.3 OK Lawton, ID, r 135
 8/16 tr
 1020 KGLI 95.5 IA Sioux City, ads, KC95 450
 1026 KLIN 107.3 NE Lincoln, calls, b 335
 The Es season was a good and memorable one here, especially because of the double hops,
 my first sure experience with it. No word yet from Colombia. For a follow-up I'll include
 more Spanish words and a cassette tape of the reception. My congratulations extend to Jim
 Pizzi for logging 1000, including Jamaica. I don't think anyone has logged that many in a
 little as two years. Until next month, 73.

Hank Holbrook, 7211 Chestnut St., Chevy Chase, MD 20815

7/21 tr
 1645 KMSZ 100.3 PA Media, 35 kw 115
 5/1 tr
 0627 KMS 96.5 VA Williamsburg, ex-WBCJ110
 3/7 local
 0745 KJLL 90.5 VA Fredericksburg, new 65
 5/30 tr
 0420 WLOP 99.3 NJ Pleasantville, WKGR 115
 6/4 tr
 1254 WFFF 89.1 NJ Trenton, 3 kw 140
 6/23 tr
 0124 KKEB 90.9 NY Brooklyn, 8.6 wts. 200
 CBY!! ne of my top 3Ls on any band,
 heard fairly well, too!!
 0952 KKEA 88.1 NY Brentwood, 180 w., 220
 very weak
 Es
 1104 KMSC 88.1 MN St. Cloud, 1.3 kw 1104
 12 others ID & all 3Ld here!!

7/27 Es
 1846 unID 106.3 c mx (thought it was KACU,
 but note below!)
 1849 KHEM 94.7 NE Norfolk, calls
 1859 KUMR 91.9 WY Laramie, SE WY wx 900
 1901 K292?? 106.3 CO Craigh, c & K/CCL Denver II
 (& just happen to have K/CCL xlator list from
 6/4 opening!)
 1904 KXNP 103.5 NE North Platte, LP ref
 KNDY 103.1 NE Marysville, loc. ref 1340
 1908 KQSA? 97.5 NE Chadron, Q-98
 1949 KRAZ 100.7 WY Cheyenne, calls 935
 1953 KENZ 92.3 NE Omaha, loc ad 1395
 2000 KXNF 103.5 NE North Platte, ID
 2002 KEGS 96.1 CO Greeley, calls 930
 2037 CBX 90.9 AT Edmonton, opera
 2040 CBBC 91.7 AT Lethbridge, // 90.9 945
 2041 CKUA1 93.7 AT Calgary, Boston SG concert
 CKUA13 91.3 AT Drumheller, // 93.7
 2043 CKO6? 101.9 AT Edmonton, E
 2049 CHFA5?90.5 AT Grande Prairie, FF
 2051 CKX? 100.3 AT Edmonton, r
 2052 CKO5 103.1 AT Calgary, c, // CKO6, confirm
 2108 CBYJ? 88.3 BC Fort St. John
 2120 CBUP2?99.1 BC Kelowna, FF
 2129 CIGV 100.7 BC Penticton, k, calls 830
 2140 CFFF 98.3 BC Kamloops, k, calls 915
 2142 CKO5 103.1 AT Calgary, CK ref
 CHFA2?103.5 AT Red Deer, FF
 2145 CBYJ 88.3 BC Fort St. John, // 89.7,
 91.3, 91.5
 8/3 MS
 0735 KLLA 95.5 NV Henderson, calls 375
 7/30 MS
 0325 KNNN 99.9 AZ Phoenix, calls 630
 8/4 MS
 0600 KFAE 89.1 WA Richland, s/on 605

8/16 tr
 1053 KIOV 104.7 SD Sioux Falls, ID, k 525
 1100 KZZL 99.5 IA Le Mars, ID 475
 1100 KUSD 88.3 SD Vermillion, ID 470

7/24 Es
 1005 KAVS 88.7 LA Lafayette, FF 1055
 1012 WVOZ 90.7 LA New Orleans 1035
 1028 WHER 90.7 FL Ft. Palm Beach, went 860
 bonkers when I phoned them & anncd. over air.
 1156 WQCS 88.3 FL Ft. Pierce 805
 1218 KKEC 93.7 LA Shreveport, c, WSTA, DE 1050
 1300 KMLU 88.7 LA Monroe 970
 7/29 Es
 1304 KSBJ 28.1 TX Humble, g 1240
 8/1 tr
 1213 WRJA 88.1 SC Sumter, weak-fair 405
 8/3 MS
 0830 WRJA 88.1 SC Sumter, bounced in w/good
 signal off & on till 1030 EST. (really MSLE)
 8/8 tr
 0531 WBUH 91.7 PA Allentown, x89.7 (3Ld
 there in '72 when only 7 w. 140
 (Underlined have 3Ld.)

#####

The Nonimportance of Capture Ratio in FM DXing

By Bruce F. Elving, Ph.D.

At various DX gatherings I have made the statement that, poor capture ratio would be an advantage in DXing. Now, I will elaborate on this idea. Capture ratio, which is defined as the ability of a tuner or receiver to reject unwanted signals just below the threshold of coming in through a stronger station, is a nice thing when it comes to listening to a stereo concert or even a baseball game on FM. But I submit that this is the principal area in which the needs of the DXer and the high fidelity listener are at variance.

Highlighting this concern is the recent discussion of the Carver TX-11 and other tuners in the VUD. See Bill Thompson's Feedback, VUD, August, 1983, pp. 56-57. Thompson says, "Personally, I have not been able to detect differences in sensitivity between FM tuners as easily as I have been able to spot a tuner with average or mediocre capture ratio performance," and "What use would the poorer capture ratio performance be in a situation such as an E-skip opening with many class A stations coming in on the same frequency?"

Given my druthers, I would take a tuner with lousy capture ratio performance, simply because it would signal the existence of a station trying to come in that was below the level of audibility. If the capture ratio were rotten enough, you might even be able to hear the programming of the two stations simultaneously—much like you would listening to a "graveyard" AM channel at night. Depending upon the acuity of your hearing and/or concentration, you might be able to pull a verifiable signal from the lesser of the two stations on such a receiver, and thus "capture" a station that might otherwise have been totally unattainable.

- As more likely happens, having a receiver with poor capture ratio would signal to you, by the distinctive fuzzy or chugging sound of two or more stations vying for the frequency, that you might, with a little effort, be able to get the just-behind station. This might mean staying on the frequency and, with a little patience, waiting for it to break through. Or, it might mean that with a little fine pivoting of your antenna (whip, line cord, or rotatable yagi), you might be able to successfully bring the behind station up front where it counts! Using a good capture ratio receiver might not alert you to the presence of a station you might otherwise not be able to hear.

I can remember the early days of my DXing career, using a tube Zenith table model radio with its welcomingly poor capture ratio. I'd tune in fairly close-by

stations during tropospheric openings and note the distinctive sounds caused by farther-away stations trying to break through, but not quite making it. I recall marvelling at how many stations could be heard with those sounds, as I tuned the dial, and using White's Radio Log, figuring out what they might be. In some cases all I had to do was wait and cheer the wanted station into audibility as it took the forefront, and at other times changing the antenna orientation to bring in the desired station. I am sure much of my success in those days was because of using the Zenith with its poor capture ratio as it was to the comparative lack of local and semi-local stations which later made DXing more difficult. Of course, I did not at the time recognize that it was due to poor capture ratio that I was alerted to those stations coming in. But as I reminisce on this now, it had to be.

Bill may be right about E-skip, and the conditions of today's band. Perhaps capture ratio is a good thing in that instance. But even there, I find the constant see-sawing of two or three stations, with only one station in the forefront at any given moment, exceedingly frustrating. Oh, if only the gods would permit a person to hear all of the two stations at the same time—you might be able to sort them out as you listened to the tapes of of the reception later!

Unfortunately, when you buy a receiver that has quality engineered into it—good sensitivity and selectivity—you also get good capture ratio. Since today's receivers are a definite improvement, as a group, over those of two decades ago, you have to expect some features to suffer, and not help the DXer as much as you'd find on vintage equipment. Such is the case with capture ratio. The ultimate solution may be for some entrepreneur—Elving Science?—to come out with a tuner engineered with all the features DXers like, such as excellent FM station signal overload rejection, selectivity, sensitivity—and with an adjustable capture ratio control!

Such a move would not be without its precedent, as most of us are aware of specialized communications receivers being used by hams and shortwave listeners, as differentiated from the more ordinary "consumer type" shortwave portable radios.

□■□■□■□■

NORTHERN FM-DX

October 1983 I can now be reached by phone - see below

C'day! First of all I'd like to thank Bob Seybold for a great convention in Dunkirk. No wonder Dunkirk is chosen so often. Way to go, Bob. Your hilltop DX is impressive, to say the very least. I enjoyed meeting my fellow WTFDA'ers; it's especially nice to KNOW the people whose reports I type, who've traded stickers, and to whom I've corresponded by phone or letter. By the way, those who stayed till the very end got the best of Bob's DX that "weekend". Monday morning, Mike Reid & I had CHICAGO UHF in our Quality Inn motel room. Meanwhile, Bob had IOWA in his BAR; no time for the hill, & we got there in time to see it. Yours truly also discovered electric fences do not enhance DX. While observing the night-time star display with some DXers, I wandered into a mildly charged fence. So those lights in the northern sky are auroral, and not an electrically-charged editor. In other words, I still need batteries for my portable. And the typewriter's still manual so better git going:

MY PHONE NUMBER, EFFECTIVE IMMEDIATELY, IS (613) 737-0585. Callers are welcome anytime between 7 AM EDT and 1 AM EDT. The # is an Ottawa one, but my mail forwarding service has proven most reliable over the summer, so TORONTO is where your reports go to. There is no deadline from now on, although I tend to mail the column to HQ towards the end of the month. Also remember I'm omitting "ID" and "ad" from loggings unless there's something more specific than that. All stations do ID, though it's often hard to believe. And if you can find a station licensed "commercial" that is ad free, let us know. WHYP 100.9 PA seems to fit that category. Conventioneers to Dunkirk '83 may have heard WHYP. Lastly, I got four reports from the same state on one day. The one with .80¢ postage (airmail) took the longest. Get it?

Paul Mount - 471 Emerson Avenue - Teaneck NJ 07666 (201)836-1137 to midnite daily.

Sony STRVX-4 w/rabbit ears - all times EDT

- JUNE**
 10 Tr Philadelphia-NJ stations
 14 Tr Similar to June 10
 30 Tr Marty Siegel in Brooklyn NY called me
 2127 WRI 105.3 VA Norfolk g vocals
 2130 WADB 95.9 NJ Mt Pleasant b "FM-96"
 2135 WLTY 95.7 VA Norfolk r "Y-96"
 2140 WQEQ 103.1 PA FreeLand local ads
 2144 WDRG 102.9 CT Hartford r "DRC-FM"
 2155 WSNJ 104.5 PA Philadelphia r no WDRG,VA
 2159 WFOG 92.9 VA Suffolk b
 2208 WKCI 101.3 CT Hamden r no WWDE-VA
 2242 WQWI 102.9 VA Norfolk s "FM-103"
 2258 WFTI 99.7 VA Norfolk g
 2342 WGH t 97.3 VA NewportNews c piano
 2355 WNER 100.7 NJ Wildwood r "\$-1"

Ed. note... Paul, re WQEQ, if you send stats to stats column, be sure you don't count call changes as a new station.

Eric Fader & I compared notes several times, also. Thought we had WRIO 102.3 Cape May NJ, but it turned out to be WBAB NY w/ a guest interview on g topic. I've found it necessary to lift the rabbit ears off the receiver and rotate the assembly at unusual angles for - sometimes any, sometimes optimum reception of adjacent frequencies. Also, going to .05 MHz higher helps, like 95.75 (digital) for WLTY to get away from local WPLJ 95.5. I've been waiting for an opening to VA-DC for this. Otherwise it's been near dead for skip. 73 FRM.

Eric Fader - 23-35 Bell Blvd - Bayside NY 11360 Technics SA-410 (digital) w/ Archer rabbit ears

- DX from Philadelphia PA:
FEBRUARY '83
 14-15 Tr general Tr to NY-DC
 21 Tr 0008 WALK 97.5 NY Patchogue
MARCH
 20 Tr 2219 WSRN 91.5 Swarthmore PA
APRIL
 28 Tr 0115on NY-NJ coastal Tropo
MAY
 7 Tr
 0125 WSEF 106.5 NC New Bern
 0134 WGH 97.3 VA NewportNews
 0206 WLTY 95.7 VA Norfolk

- 0215 WWDE 101.3 VA Hampton "2-W-D", "FM-101"
 0300 DC-MD 102.5, 103.5, 104.7, 105.1, 107.3, 107.9.
 0332 WKJA 92.1 NC Belhaven Larry King Show (synd.)
 0703 WLTY 94.7 MD Bethesda "Light"rock
 0717 WEZR 106.7 VA Manassas
 0727 WVKX 105.9 VA Woodbridge
 0730 WRFK 106.5 VA Richmond j o/WRLX-MD
 0740 WRKZ 106.7 PA Hershey k u/local slop
 0803 WHP 97.3 PA Harrisburg b
 0811 WDYL 92.1 VA Chester
 0814 WEZS 103.7 VA Richmond "EZ-104"
 0816 WRVQ 94.5 VA Richmond "Q-94"
 0819 WPVA 95.3 VA Petersburg

CONTINUED-->

Eric Fader, cont.

NORTHERN FM DX (2)

October 1983

May 7 Tr cont.

- 0843 WNAV 99.1 MD Annapolis slop to 99.3
 0852 WFRE 99.9 MD Frederick b
 0900 WYJ 90.5 VA Fredericksburg g
 0910 Everything but Norfolk VA & DC gone.
 2120 Coastal Tropo returns.

- 2146 WCTD 107.1 MD Fredericksburg k
 2356 WALK 97.5 NY Patchogue
 8 Tr
 0104 WAAF 107.3 MA Worcester
 0122 WHUD 100.7 NY Peekskill

The rest of Eric's DX comes from Bayside (Queens):

(I'd love a tape of WHOT & NINE, the pirates...I'll be glad to pay to cover costs, too-yr editor)

FEBRUARY 1983

- 28 Tr
 0045 WKSZ 100.3 PA Media Also minor coastal Tropo
 2155 Minor general Tropo from PA-NY-NJ
MARCH
 17 CW-Tr
 0237 WKNJ 90.3 NJ Union
 1300 WKNJ o/ WMSC-NJ; all else 90.3 seemed to be off air.

19 Tr

- 1144 I tuned in & noted all stns atop the Empire State Bldg off (see FM Atlas-ed) NY stns on 92.3, 93.9, 96.3, 97.9, 99.5, 104.3, 105.1, 106.7, 107.5 off. Am I dreaming? (Yes, you never had any of this! Heh!!!-ed)
 1144 WBYO 107.5 PA Boyertown g
 1153 WSNJ 107.7 NJ Bridgeton
 1208 WRKZ 106.7 PA Hershey "Z-107" k
 1220 WIOV 105.1 PA Ephrata "I-105"
 1235 WVCD 97.9 PA Hazleton
 1239-1251 All back on. WBAI DJ said went off 1126 & "This is one of those magical moments when a R. Stn goes off the air & comes back on. So while I'm still here /" & they all went off air.

MAY

- 26 Tr General CT-MA-NJ-MD coastal Tropo
 27 Es
 1137 unID 91.7 c fades 1152-1202
 1143 unID 94.9 m CDT time check
 1231 KRSM? 91.7 OR other MN stn.
 1245on WMIT 90.3 IA Sioux City
JUNE
 5 Es
 1936 KETR 88.9 TX Commerce ment. severe T-Storms in their area

9 Tr

- 2200-2330 CT-MA-MD-VA tropo
 11 Tr
 2230-2355 CT-MA Tropo

18 Tr

- 0102 WEVO 89.1 NH Concord s-off in the period 0100-0115 between WNYU s-off & WFDU-NJ s-on
 0112 WHOT 91.5 NY Brooklyn? PIRATE w/echo (a la spoof of WLNG 92.1) played oldies & had a loop-line phone #352-9906, "Hot 91 1/2" & great jingles. Also \$ (ED Note: 91.5 is a hotbed (scuse the pun) for NYC pirates, & I've called that # for a popular NYC AM pirate.)

20 Tr-CW

- 0048 WXL 103.7 NJ Newton one of my closest unheards pre my SA-410

30 Tr

- 2300on Coastal to VA, MA & in between

JULY

1 Tr

- 0154 WNPR 89.1 CT Norwich thru lcl, e //WPBH90.5 & s-off

1 Tr cont.

- 0218 WHTT 103.3 MA Boston call change
 0229 WFNX 101.7 MA Lynn call change
 0241 WMVB 97.3 NJ Millville another close stn unheard.

2 Tr

- 0108 WEVO 89.1 NH Concord s-off
 0125 WHOT 91.5 NY Brooklyn area see Junel8th

3 CW-Tr

- 0150 NINE 91.9 NY Queens an old 1979 pirate on for special July 4th broadcast. Signal \$ and NOISELESS.

3 Es

- 2025 KUHF 88.7 TX Houston
 2030 unIDs 94.5 3 stns likely Houston, Gainesville & Harlingen TX...& WDAC-PA
 2043 KRCK 94.5 LA Shreveport r
 2107 KWIS 94.9 TX Arlington
 2111 unID 91.7 Weird singing perhaps Chinese

4 Tr-CW

- 0205 WHOT pirate again 91.5 NY Brooklyn area
 2100 CT-MA 98.1 96.1 97.7 102.3 etcetera

5 Tr

- 0102 WRTC 89.3 CT Hartford

10 GW-Tr

- 1945 WFMN 103.1 NY Newburgh another close by, yet unheard till now.

11 GW-Tr w/ Empires (see Mar 19) all off

- 0106 WBYO 107.5 PA Boyertown
 0107 WMJX 106.7 MA Boston call change
 0110 WGD 97.9 PA Hazleton
 0121 WRKZ 106.7 Hershey (PA-oops, ed)
 0122 WCNA 107.7 NY Albany k
 0133 WJBQ 97.9 ME Portland r
 0159 WJBR 99.5 DE Wilmington b
 2155on minor coastal; thanks to Joe Fela for phone-tip

12 Es

- 1415 unID 88.7 FF despite Es to SOUTH, PQ??? (No, I'd suspect KRVS LA as they're billing-ual FF-EE. I had 90.7 WHRS FL in FF so can easily be the South-editor's mumbling comment)

18 Tr-CW The Empire stns off(there's an idea for a blockbuster movie in there-ed)

- 0100 WJBQ 97.9 ME Portland
 0107 WCNA 107.7 NY Albany
 0112 WIOV PA Ephrata (105.1)
 0125 WPRO 92.3 RI Providence
 0144 WRIU 90.3 RI Kingston 0203 s-off
 0150 WRKZ 106.7 PA Hershey
 0155 WSSH 99.5 MA Lowell

23 Tr

- 2300on CT-MA-RI in strong

24 Es Great opening, started to IA-MS-FL but went into FM to S.FL only; thanx to phone-tips from Paul Mount, Joe Fela

- 1058 WIRK 107.9 FL W. Palm Bch "CountryK"

24 Es cont.
1106 WEAT 104.5 FL W. Palm Bch "relaxing 104"
1107 WRMB 89.3 FL Boynton Bch g
1109 WATA 97.3 FL Miami r
1112 WKQS 99.9 FL Boca Raton k
1121 WLYF 101.5 FL Miami b
1124 WINZ 94.9 FL Miami Bch r "I-95"
1132 WHYI 100.7 FL Ft Lauderdale r
1137 WLRN 91.3 FL Miami c
1145 WRBQ 104.7 FL Tampa "AT-40"
1150 WWSU 104.7 FL Big Pine Key r
1155 WBEAT 107.3 FL St Petersburg b
1208 WFSU 91.5 FL Tallahassee c
1235 89.7 c Tampa or Miami
1300 MUF off FM/returns 1820
1824 WKFX 88.5 FL Sunrise "K-Picks"
1827 WINZ 94.9 FL Miami Bch
1832 WLYF 101.5 FL Miami
1835 WEDRT 99.1 FL Miami s
1855 WHYI 100.7 Fort Lauderdale

1900 WMCU 89.7 FL Miami c
1902 WRMB 89.3 FL Boynton Bch
1906 WMBAT 107.3 FL St Petersburg b
1908 WWSU 104.7 FL Big Pine Key
1927 WCVU 94.5 FL Naples
1930 WEAZ 94.5 GA Baxley
1935 unID 94.9 FL WCSN??? k
27 Es 1030-1515 Missed to LA-AR-OK while taking a bar exam. T'was obvious there'd be Es. (Good luck, & if I need a lawyer..)

28 Tr
0045 WWOX 105.7 NC Columbia "OK-106" r ex-WTHD
0210 Coastal tr to CT-MA-VA(97.3) & areas in between)

All in all, a fairly interesting July after a silent May and a quiet June. I predict a big Tropo doing in the N.E. AUGUST 3-11...I'll be away in CALIFORNIA, hi! (Average in W. NY at that time-ed)

Robert Goodman - 2030 Hering Avenue - Bronx NY 10461

Aug 1982-July 1983 EDT time

JULY 24 Es 1900 WFSU 91.5 Tallahassee FL 950 miles
1924 WINZ 94.9 Miami Beach FL 1100 miles "I95"

Both new. Locally WRKI 95.1 CT is also I-95. I use Radio shack CB-8 multiband w/ "invinible" 73, Robert. AFC...ugh.

Arnold Lazarus - 333 Candee Avenue #4E - Sayville NY 11782 (516)567-2545

*Akai AT2650, Channel Master Probe 9, rotor at 40 feet.

JUNE
18 Tr
0716 WLTJ 95.7 VA Norfolk r
1334 WFMP 104.5 MA Fitchburg m "M-104" lcl ads
2123 WHMP 99.3 MA Northampton r local ads "FM 98" slogan

19 Tr
1100 WKQT 101.7 MA Pittsfield Polka mx
22 Tr
0746 WDST 100.1 NY Woodstock
1736 WWCX 105.7 NC Columbia "OK-106"
2307 WITN 93.3 NC Washington r
2317 WXTR 104.1 MD La Plata r "Extra 104"
23 Tr
0631 WOKS 96.5 VA Williamsburg mx
0659 WEZR 106.1 VA Manassas "the new WEZR"

29 Es
1959 WRMB 89.3 FL Boynton Bch g
2015 WINZ 94.9 FL Miami Beach r "I-95"
30 Tr
0800 WYGS 91.5 VA Yorktown s-on ancmts
1810 WRVQ 94.5 VA Richmond r "Q-94"
1939 WTVR 98.1 VA Richmond k nx "FM-98"
2038 WNTT 100.9 VA Warsaw k
2043 WRXL 102.1 VA Richmond r
2054 WEZS 103.7 VA Richmond rm "EZ-104"
2100 WRFK 106.5 VA Richmond c
JULY 1 Tr
0700 WZID 95.7 NH Manchester
0729 WQNA 107.7 NY Albany k "GNA"
0733 WFOR 101.9 ME Portland k nx
0737 WJBO 97.9 ME Portland r "98-JBQ"
0741 WUNH 91.3 NH Durham r
0754 WPEC 92.9 ME Bangor lcl ads

July 20 Tr
0835 WKHS 90.5 MD Morton j

1 Tr cont.
0800 WMCU 93.5 ME Rockland
0814 WMLX 106.7 MA Boston r o/WKHK
0818 WFBO 92.3 RI Providence r "PRO-FM"
1931 WEZF 92.9 VT Burlington el

2 Tr
0757 WZZO 95.1 PA Bethlehem r "ZZO"
0814 WKKW 104.1 PA Allentown k
3 Es
2204 KWJS 94.9 TX Arlington g
2230 KSBJ 88.1 TX Humble
5 Es
1927 unID 92.1 "92-Ways" k
1938 WCSN 94.9 FL Tallahassee r
1946 WGOV 92.9 GA Valdosta k "V-93"
2000 WKGC 90.7 FL Panama City p

8 Tr
0538 WQMR 91.9 MA Provincetown (that's the one Ernie Cooper volunteers at -ed)
0544 WSME 92.1 ME Sanford r dual "WEBI & WSME"ID

11 Tr
0401 WNUA 91.1 MA Amherst wx
0431 WFSI 107.9 MD Annapolis g
19 Es

1930 unID 90.5 "Serving the Whiteshell portion of Ontario" (CB..Ft Francis)
1935 unID 89.1 FF perhaps Ft Francis (if CBC, yup, if not could be Quebec City PQ & I'd doubt that's Es distance for you...)
2000 KCRB 88.5 MN Bemidji
2007 unID FF r mono "Radio Canada de Neuve Ontario" presumed Thunder Bay ON CJon20. (Yep, & Neuve" may be Nord (north) although such a phrasing would be grammatically incorrect. Neuve is NEW!
2040 unID //89.3 on 88.1. (yer ed doubts PEI so mebbe Sault Ste Marie ON CJon18 tho power only 1700w. & much closer to u.

Ernie Cooper - 5 Anthony Street - Provincetown MA 02657 (617) 487-9337

Equipment: "Toy" Realistic STA-52; Antenna is double dipole on roof. This will soon be improved. I await the side-by-side test of the McIntosh MR-78 and the Carver SX-11 at the convention. My present receiver is difficult to DX with, as the dial pointer slips a great deal when I reverse direction, and it is next to impossible to tell what frequency I'm on, without finding a local and counting off the channels. Here's the more recent DX here at the Tip of the Cape: (1983) *Verified

MAY
8 Tr
0955 CBD 91.3 NB Fredericton nx stocks wx for entire Maritime area
1150 WHCF 88.5 ME Bangor * hymns to 1200, nx sports wx, hymns at 1224

17 Tr
1603 unID 90.3 Detailed wx for various areas w/ locations of buoys, a local, & nx re Canadian National Fisheries.

(ed, note: I'd guess CBMM NF but that'd be very good Tr, even for you on the "tip". It is a Maritime CBC for SURE. No one seems to have had Es then. You sure not 90.5 Halifax?????????)

27 Es My 1st of season, here.
1105 KLJC 88.5 MO Kansas City ABC nx, wx b & g *
1135 KOCK 88.3 IA Cedar Rapids relog *
1140 KDPS 88.1 IA Des Moines r *
1151 KUCB 89.3 IA Des Moines black g
1201 KHKE 89.5 IA Cedar Falls/ Waterloo m

JUNE
23 Es
1851 WRMB 89.3 FL Boynton Bch g relog *
27 Es
1746 WKWC 90.3 KY Owensboro ment. summer picnic on Ohio River *

1749 WBCL 90.3 IN Fort Wayne g mixed w/ WKWC for 12 min & gone *

***I've a classical band mx prgm on WQMR 91.9 in Prov. MA every Sat. at 1000, & at 1100 "Forward March" is aired, w/ marches from world-wide. Is there anything similar on other stns-I'd like to know what stns & when & what. I'd like to correspond w/ hosts of such programs. -Ernest.

(Ed, Ernie, you seem hot on QSLing; I hope you'll let Tom Yingling (QSL Corner) in on your QSLing. Try long distance info for the phone # unID; better yet, EVERYONE should send unIDs to CCI; they simply cannot be noticed as easily by someone who could solve 'em. I may abbreviate unIDs to include an indication of time heard...I feel this is important especially in the fringes of FM Es openings. I've beenmaking changes to this column; how does everyone feel? No rotten eggs in my mailbox, so far at least - but criticism is welcome, too)

Alan Michalek - 227 Redlands Street - Springfield MA 01104. Panasonic RF-2900 w/whip antenna

JUNE
27 Es
1906 WCHY 94.1 GA Savannah "T94" k
1915 WBYZ 94.5 GA Baxley equip.test; regular prgm begins July 11
1916 93.5 "KC93" GA-FL connection
1917 WGOV 92.9 GA Valdosta
1938 WQXI 94.1 GA Smyrna-Atlanta "94Q"
1924 WCON? 97.9 "FM98"
1953 WCPJ 100.3 GA Tifton "\$100"

28 Es
2028 WAIV 96.9 FL Jacksonville "97-Wave-FM"
2030 WQLO 98.7 SC Beaufort
JULY
5 Es
1841 WOMB 97.7 SC Georgetown
1843 WATA 97.3 FL Miami "97-A-1-A"
1933 WVPF 94.1 FL Lakeland

JULY
1 Tr
0133 WRKS 98.7 NY NYC "Kiss-FM" r plugs for a "Kiss Card" * after 5 tries
0946 WPKN 89.5 CT Bridgeport m ment. Ray Terlaga (NRC DXer I think) but no verie after 3 attempts
1000 WWHB 107.1 NY Hampton Bays In like a local mostly all day; r
1100 WMAJ 107.1 NJ Long Branch In & out w/ WWHB; not much for QSL report

5 Es
1917 MUWF 88.1 FL Pensacola Cleveland Orchestra Concert
2012 unID 90.7 c/organ w/ Lee Erickson; nx re other concerts; fadeout

19 Es
1945 WIAA 88.3 MI Interlochen fundraising & some mx 1st MI FM here
1942-2041 unID 88.3 w/ ballet mx from "Gise-11e; when narrator said she went into the woods, so did signal
2019/20 88.9 Comedy stories;89.3 band & c mx & SOUZA marches-I'd sure like to know who this was!

24 Es
1843-51 unIDs 89.3 w/phones 523-3471, 523-8989 & Marshall Tucker Band mx; On 88.5 Frick Collection concert w/ Everett Fay; 90.1 someone interviewing nincompoops at outdoor rock concert.
1855 WMFE 90.7 FL Orlando end "Firing Line" talk show, into g drama/mx I may visit on planned FL trip

1959 WCHY 94.1 GA Savannah "T94"
2000 WFSU 91.5 FL Tallahassee c
14 Es
1808 KWTO 98.7 MO Springfield "Rock 99"
1812 KMOD 97.5 OK Tulsa
1813 KFBP 97.7 MO Waynesville "B98"
1815 KDBQ 96.9 KS Pittsburg
1820 KYYK 98.1 MO St Louis "KY98"
1825 KCPQ 98.5 OK Tulsa
1830 KWFC 97.3 MO Springfield g
1835 KRUZ 102.5 MO Joplin "Z103" r
1910 KNID 96.9 OK Enid k
1922 KXLS 99.7 OK Alva-Enid "Class-FM"
19 Es
2013 WERI 94.3 WI Eagle River
2020 KNNS 96.9 MN Grand Rapids
2046 97.5 MN? Twins' bb

JULY 24 Es
 1815 WRIA 97.3 FL Miami "97-A-1-A"
 1821 WSHF 103.5 FL FtLauderdale "103-She"
 1828 WCKO 102.7 FL Pompano Beach
 1835 WJLF 106.7 FL FtLauderdale "107-FM-Joy"
 1844 WLYF 101.5 FL Miami "W-Life"
 1845 WXOS 100.3 FL Plantation Key

1859 WEAT 104.5 FL West Palm Bch "Relaxing-104" b
 1900 WYOR 105.1 FL Coral Gables "EZ-105"
 1905 WQBA 107.5 FL Miami in SPANISH -ed)
 1907 unID 104.7 FL "Q-105"(WRBQ FL, WACQ GA...
 1915 WQYK 99.5 FL StPetersburg "K-99" K
 1931 WQXM 97.9 FL Clearwater "98-Rock" r

Thomas J, Yingling jr. - 221 Pinewood Rd - BALTIMORE MD 21222 EDT Time.

I've finally got an FM DX report for your column; between DXing TV SW PSB, I got some good FM DX (SKIP). My receiver is a Pioneer TX-9100 w/SCA built-in. Antenna is a Probe-9 by Channel Master On GDE push button rotor control box type (don't know model #).

JUNE
 8 Es
 2028 KLPQ 94.1 AR Little Rock
 2040 KBEZ 92.9 OK Tulsa
 2050 KJCK 94.5 KS Junction City
 2100 KVVN 90.7 NE Omaha
 28 Es
 2000 CBAF-29 88.1 PEI Charlottetown FF
 2010 CKPE 94.9 NS Sydney
 2030 CKWM 97.7 NS Kentville
 2034 CKOT 101.3 ON Tillsonburg (ed. Tom & I agreed at Convention this was Tr, but I wonder if this explains some "short hop" - The easiest to confuse is Es & MS...I should know; I've done it a few times-ed)
 29 Es
 2100 KHME 96.7 OK Comanche
 2120 WQUE 93.3 LA New Orleans
 2138 KAYD 97.5 TX Beaumont

JULY
 3 Es
 1622 KJUC 88.3 TX Keene
 1630 KSEJ 88.1 TX Humble
 2030 KWTX 97.5 TX Waco
 2100 KSRD 96.9 NE Seward
 2130 KNBO 97.5 AR Hot Springs
 2210 K1AW 101.5 OK Lawton
 9 Es 1630 WMDM 94.3 FL Marathon Key
 12 Tr 1700 WQKS 96.5 VA Williamsburg
 14 Es
 1700 KYNN 94.1 NE Omaha
 1710 WBY5 98.3 IL Sterling
 1730 WKAI 100.1 IL Macomb
 1745 KRG1 96.5 NE Grand Island
 1800 KBBN 98.3 NE Broken Arrow
 1810 KNCT 97.7 NE Nebraska City
 1820 KSYZ 107.7 NE Grand Island
 1830 KQSK 97.5 NE Chardon "Q-98" Mountain time



Got some Es at last, with good IDs & stuff for QSL reports. Why must there be Tr when there is skip, messing up clear freqs? & then the skip won't be steady to follow the stns that come in. Does anyone else have the same problem; also has anyone noticed that just before a skip opening ends, the mileage of stns you're receiving jumps out farther? Is this because, when the E-Cloud begins to break up, that it moves up higher, thus increasing the skip mileage zone? I've noticed this on FM TV & PSB E-SKIP. That's all for now, '73's & good dxing (ED: I most definitely have noticed that; can VUD's "Technical Topics" help??) -Tom.

Harry Hayes - 9 Henry Street - Wilkes Barre PA 18702

The weekend of JULY 23-24 could probably be said to be the whole highlight of the 1983 DX season, with many hours of FM Es on both days. I was away much of the time this weekend, unfortunately, so I guess I missed quite a bit. Other than this, I would still rate 1983 as the least active VHF-UHF season ever in these parts.

DX at WILKES BARRE (GE Superadio, Zenith Trans-Oceanic, RadioShack indoor FM rabbit Ears).

JUNE 29 Es
 2109 KSCS 96.3 TX Ft Worth k
 2123 KNOK 107.5 TX Ft Worth s
 2130 KKAJ 95.7 OK Ardmore
 2115 KEGL 97.1 TX Dallas pr
 2115 KPLX 99.5 TX Dallas k
 2115 KZEW 97.9 TX Dallas punching thru semi-1cl WZV
 JULY 14 Es
 1829 KDBQ 96.9 KS Pittsburg r
 1849 KKKX 95.7 KS Ottawa "96-X"

DX at THORNHURST (10 mi. NE W.B.; GE Superadio, Winegard FM&G at 25' W/Rotor at 1900 ASL)

JULY
 3 Es
 2030 KRLY 93.7 TX Houston "Love-94"
 2038 KHOO 99.9 TX Waco
 2050 WJMI 99.7 MS Jackson
 2058 KTIZ 96.9 LA Alexandria
 2059 KWTX 97.5 TX Waco
 2107 KNOK 107.5 TX Fort Worth
 2110 KZRO 104.3 AR Marshall
 2112 K1XK 106.1 TX Denton
 2115 KACQ106.3 AR Hot Springs
 2127 KMEZ 100.3 TX Dallas
 2135 KPXI 100.7 TX Mount Pleasant
 2137 KRM0 101.1 LA Shreveport
 2159 KZZB 95.1 TX Beaumont "B-95"
 2200 KSEJ 88.1 TX Humble g
 2208 KR0K 94.5 LA Shreveport
 2211 KSCS 96.3 TX Fort Worth
 2215 KGRI 100.1 TX Henderson
 2231 KJUC 88.3 TX Keene
 2232 KAFM 92.5 TX Dallas back to T-40 format
 2244 KPLX 99.5 TX Dallas
 8 Es
 1000 KLEF 94.5 TX Houston c
 23 Es
 1140 KMBQ 93.7 LA Shreveport
 1143 KR0K 94.5 LA Shreveport
 1150 KGRI 100.1 TX Henderson
 1213 KKTXT 95.9 TX Kilgore "96-X" heard
 1300 WKIY 93.5 MS Bay Springs "WHII-WKIY" dual ID

THIS REPORT CONTINUES ON NEXT PAGE

JULY
 24 Es
 1300 WOKK 97.1 MS Meridian
 1309 KSM6 94.5 LA Lafayette
 1314 KTDY 99.9 LA Lafayette "Casey Casem" mx prgm
 1838 WKPX 88.5 FL Sunrise T-40 rock "K-Pex"
 1842 W0JC 93.3 FL Tampa ex-WFLA
 1858 WSHF 103.5 FL Fort Lauderdale "103-She"
 1900 WPIO 89.1 FL Titusville
 1906 WIRK 107.9 FL West Palm Beach "The-Country-K"
 1923 WQIK 99.1 FL Jacksonville
 1925 WQYK 99.5 FL St Petersburg
 1936 WAXY 105.9 FL Fort Lauderdale
 1940 WHRS 90.7 FL West Palm Beach "FM 91" Pledges (They were fundraising that nite & so was WFPE FL 90.7, I heard 'em both. WFPE is pretty consistent with the "FM-90-Plus" slogan & WHRS uses "\$-91" and "FM-91". I even had WHRS doing a bit in FRENCH around 1240 EDT, but t'was EE rest of day. They even mentioned their signal was bouncing into Chesapeake Bay (VA) & CTI-ED).
 2000 KLPI 89.1 LA Ruston in well w/ protest rock!
 2000 KLVU 91.3 TX Beaumont end "The Big Bandstand" w/ host Ted Fleischaker (we dxers sure get around-ed)
 2101 KSEJ 88.1 TX Humble
 2105 KSM6 94.5 LA Lafayette
 2130 unID 88.3 w/ readings from Modern Maturity and Old Age Topics . (Your ed. suspects WRBH N.O. LA, "Reading to the Blind and Handicapped"; that's the stuff I've heard in about seven loggings of 'em this summer. They're easy on Es, so you might get 'em lots.)
 2217 KWEH 97.1 AR Camden 2231 KJKK 95.3 AR Murfreesboro Log totals now 689 FM's hrd.
 2219 KIPR 95.5 TX Diboll 2252 KR0K 94.5 LA Shreveport



Dave Nieman - 12284 Nice Road - Akron NY 14001

JUNE
 25 Es (MUF 107.5)
 2132 KMGC 102.9 TX Dallas r 1200
 2214 KNUE 101.5 TX Tyler k 1155
 26 Es (MUF 105.1)
 1133 KOEZ 92.3 KS Newton b 1045
 1236 K1LO 93.9 CO Colorado Spr. r 1380
 "CO's concert stn. Kilo-94"
 1240 KRDO 95.1 CO Colorado Spr. m 1380
 (G/ WLF Bristol Center NY)
 1247 KOSI 101.1 CO Denver b "FM-101, 1375
 cozy, K.O.S.I."
 2029 KUWR 91.9 WY Laramie t 1375
 2105 KBVL 94.7 CO Boulder c 1380
 27 Es (MUF 94.8 (only 2 FM in area-ed))
 1630 ZBM 89.1 BERMUDA Hamilton r 1000
 1801 ZFB 94.8 BERMUDA Hamilton b 1000
 28 Es (MUF 93.9)
 1233 KANW 89.1 NM Albuquerque s 1575
 1241 KOB 93.3 NM Albuquerque r 1575
 1300 K1XS 93.3 TX Killen r 1325
 2200 K1LO 93.9 CO Colorado Spr. 1380
 JULY
 3 Es (MUF 107.9)
 2021 KLOL 101.1 TX Houston rp 1275
 "Houston's best rock!"
 2033 KNOK 107.5 TX Fort Worth s 1215
 2041 K1XK 106.1 TX Denton r 1175
 2100 KWIC 107.9 TX Beaumont r 1230
 2106 KEAN 105.1 TX Abilene k 1350
 2116 KZEW 97.9 TX Dallas rp 1200
 2204 KUT 90.5 TX Austin m (ex-90.7) 1355
 JULY 4 Es (MUF 92.1)
 0901 WPIO 89.1 FL Titusville g 1025
 5 Es (MUF 107.3)
 2103 WQUE 93.3 LA New Orleans r 1090
 2153 KDCK 95.5 KS Dodge City r 1150
 2201 KKKX 95.7 KS Ottawa "96-X" r 925
 8 Tr & Es (MUF 93.3)
 0656 WFPK 91.9 KY Louisville c 490
 2130 KLJC 88.5 MO Kansas City g 870
 12 Es (MUF 103.7)
 1355 WBSN 89.1 LA New Orleans g 1090
 1544 KVIL 103.7 TX Dallas r 1200
 13 GW-Tr
 2258 CKIN 88.1 ON Toronto pr \$ (50 wattsERP-ed)
 14 Es (MUF 107.3)
 1830 KWEH 97.1 AR Camden r 1000
 1855 KLRE 90.5 AR Little Rock c 930
 1908 KAYE 90.7 OK Tonkawa rp 1075
 1929 K1ZR 105.9 KS Lawrence rp "Rock-106" 925
 1935 KTFK 106.9 KS Topeka k "Country-107" 925
 15 Tr & Es (MUF 92.3)
 0744 WWRM 106.7 MI Gaylord mr 330
 0858 WVEVO 89.1 NH Concord c 345
 1650 CKOZ 92.3 NF Corner Brook r 1200
 16 Tr
 0858 CBON-21 104.9 ON Gogama FF 420
 17 Tr
 0910 CBF-8 100.1 PQ Trois Rivières 385
 0929 CJMF 93.3 PQ Quebec r-d FF 460
 1000 CBF-9 96.3 PQ Mont-Laurier FF 310
 -Dave.

Fred McCormack - 135 Prairiewood Drive - FARGO ND 58103

Only a few FM openings were noted this period, but they provided some interesting DX. The FLORIDA loggings in the 1600 MILE range came as quite a surprise. There was no indication of any DOUBLE-HOP possibilities, so it'd seem that it was long Es w/ Tr extension at one

end (Likely the FL end). (Ed. Do Tr play a role like that?)

I also got my first logging from NEW BRUNSWICK. I assume the calls are CKHJ as they only IDed as "KHJ". They had k music & NB wx report. I'm hoping for some Tr soon, but it seems unlikely. The FM band is filling up; even out here, and my tuner is suffering from a lot of overload from all the local 100 KW transmitters. It seems hard to pull any distant signals through the mess.

REPORT COVERS JULY 1983: TIMES ARE C.D.T.

Table with 3 columns: Call letters, Frequency, and Location. Includes stations like WMEZ, WTKX, WXBW, etc.

(is N.O. IA 1225 or 1235- ed)

TIM BROWN - 24 Laceywood Crescent - DON MILLS ON M3A 2Z4 (Don Mills is suburb of Toronto)

Just some notes to bring club members up to date with FM DX in the TORONTO area. Actually, I've been so busy, I've only had two occasions to DX in the last month! Luckily, both times have been during some very strong Es openings, with some strong Tropo as well. I won't mention the Tr as most of the stations come in quite easily.

On June 27 Mike Reid was kind enough to let me in on an opening to BERMUDA. ZBM 89.1 was in with a signal strength great enough to record in stereo! A humorous note...it was my birthday (Happy Birthday! -ed) that night and my family prepared a great dinner; but because of the sustained FM opening, they didn't see much of me! I assume they had a good time without me. (Tim, by feeding me a line like that, do you know what you're doing? An editor with any streak of meanness would have answered your assumption-Ed) ZBM lasted for several hours & seemed to peak around 1800. They've adopted a fully American format since I last listened in 1977. (American "r" format, a lot like WBBN 102.5 NY, to be exact-ed) The next great opening (Es) was on JULY 14 from 2030-2130:

Table with 3 columns: Call letters, Frequency, and Location. Includes stations like KEGL, KOEZ, KRRD, KSWT, KBUZ, etc.

KINF mentioned a caller from BUFFALO NY, maybe a club member?

The weekend of JULY 23-24 was amazing, but I missed most of the Es due to work and other obligations.

JULY 23 Es 1030-1200: 92.5 WPAP FL Panama City, 103.3 WDUV FL Bradenton-Sarasota, and 90.7 WKGC FL Panama City.

JULY 24 Es around 1900: 97.3 WAIA FL Miami and 107.5 WQBA FL Miami.

This has been a great year so far when one considers I haven't been able to listen to a radio for any great period of time. The other factor is the pesty imaging problem that persists due to my location - 5 miles from the CN TOWER.

(ED. NOTE: That CN TOWER is host to most of Toronto's FM-TV signals, much like the World Trade Centre or Empire State Bldg in New York City hosts NY's locals. My home in Toronto is much closer to the Tower than Tim's is. Yes, that's DX in a big city; I haven't made a serious attempt to try FM-TV there; in fact I'll swear the Tower casts a shadow on our house...well almost)

I hope everyone has a great time at the convention. I am in a new job and cannot afford to take time off; so I'll have to wait till next year's convention.

73's, Tim Brown

Daniel E. Oetting - 2882 Old Cedar Grove Road - Broomall PA 19008

EQUIPMENT: Yamaha T-70, Panasonic RF-2600 and Archer 10-element yagi (FM) hand rotatable W-N at 25 feet AGL.

Table with 3 columns: Call letters, Frequency, and Location. Includes stations like JULY 3 Es, 2017 KITX, etc.

Table with 3 columns: Call letters, Frequency, and Location. Includes stations like JULY 19 Es, 1830 KNEY, etc.

there's more

JULY 24 cont.
 1950 WBLX 92.9 AL Mobile s
 2000 WUVF 88.1 FL Pensacola g
 2010 KNIF 95.3 TX Gilmer rm
 2020 WHLL 91.3 AL Mobile local ref
 2020 unID 92.1 in SS; see coments.
 2100 KLIL 92.1 LA Moreauville r
 2214 WNTB 97.1 IL Chicago c
 2241 Es off FM
 25 MS
 0450 WZUU 95.7 WI Milwaukee ID
 26 Tr
 0001 WYJY 90.5 VA Fredericksburg s-off
 27 Es
 1134 WIL 92.3 MO St. Louis k
 1135 KSLH 91.5 MO St. Louis m
 1138 KSHB 94.7 MO Crestwood rp
 Had to leave Es at 1146
 27 Tr
 1954 WOBR 95.3 NC Wanchese b
 2136 WFLR 99.1 CT New Haven rp
 2145 WRHU 88.7 NY Hempstead p ex-WVHC
 2200 Very good Long Island NY Tropo
 2330 WTYD 100.9 CT New London

28 Tr
 0015 WNET 107.9 NC Greenville b
 0030 WRIU 90.3 RI Kingston p
 0105 WJJB 97.7 NY Hyde Park rp
 0115 WCTY 97.7 CT Norwich k
 0120 WRVQ 94.5 VA Richmond r
 0125 W220AA 91.9 NJ Perlin sr WVRM xltr
 0132 WKRB 90.9 NY Brooklyn pr Swatts good signal
 0139 WPIA 95.3 VA Petersburg k
 0144 WWMK 107.7 VA Warrentown rm
 0210 WSOX 94.9 MA West Yarmouth b
 29 Tr
 2242 WCIB 101.9 MA Falmouth mr
 30 Tr
 0106 WWSB 91.1 VA Norfolk s-off
 AUGUST 1 Tr
 0301 WFRB 105.3 MD Frostburg k WDAS off
 0307 WTMJ 88.9 CT Hartford b
 The SS unID on 92.1 on JULY 24 was thought to have been WCMQ-FL, but after talking to Steve West who was receiving a SS 98.5 DOUBLE HOP Es to MEXICO, that area falls into SUSPICION. Until next month 73s Dan

Having received no more reports as of Aug 30, your editor will edit his own stuff

An awful JUNE transpires into a slow but (I guess) acceptable JULY. I still did a lot of fishing, though. Here goes:

JULY
 3 Es
 2012 KZ7Q 94.3 LA Galliano
 2014 WRBH 88.3 LA New O. Reading for the Blind and Handicapped 1225
 2015 WQID 93.7 MS Biloxi 1160
 2018 103.7 KBIU LA Lk Charles 1310
 2019 WEZB 97.1 LA NO "B-97" 1225
 2024 KYKZ 96.1 LA Lk Charles "Kix-96" 1310
 2026 KHOM 104.1 LA Houma 1270
 2029 WKWZ 101.7 MS Collins "101KNZ" & synd. "Countdown America" 1235
 2030 WCKW 92.3 LA LaPlace 1360
 2032 KRVS 88.7 LA Lafayeete 1230
 2041 WFMF 102.5 LA Baton Rouge 1280
 2043 KAJN 102.9 LA Crowley g 1120
 2047 WQMV 98.7 MS Vicksburg "Q-99"
 2048 KYKS 105.1 TX Lufkin "Kix-105" r
 2049 WJMI 99.7 MS Jackson 1085
 2051 KIPR 95.5 TX Diboll "Kipper" 1305
 2052 KKBQ 92.9or5 TX Pasadena; due to their strength & lcl CHAY 93.1 t'was hard to tell the real freq. 1410
 2053 KRBE 104.1 TX Houston Astros bb 1410
 2105 KWIC 107.7 TX Beaumont "KWIC-FM-108" 1350 & oldies 50s-60s mx
 2107 WYNN 101.5 LA Baton Rouge 1230
 2110 WKYV 106.7 MS Vicksburg 1120
 2115 KRLY 93.7 TX Houston "Love-94" 1410
 2117 KPMK 97.9 TX Houston "98FM-KPMK" 1410
 2119 KSRR 96.5 TX Houston 1410
 2125 KOOF 106.5 TX Jacksonville Astros bb1285
 2130 KSEJ 88.1 TX Humble 1395
 2131 KPFT 90.1 TX Houston 1410
 2136 KHCB 105.7 TX Houston g 1410
 2138 KAYD 97.5 TX Beaumont 1350
 2140 KRRV 100.3 LA Alexandria 1220
 2145 KLEF 94.5 TX Houston 1410
 2207 KJQJ 106.9 TX Conroe g 1395
 2215 KMJQ 102.1 TX Clear Lake City

JULY 3 Es cont.
 2234 KZ2B 95.1 TX Beaumont "B-95" "Triangle area weather" 1350
 2236 KTOC 104.9 LA Jonesboro 1175
 4 Tr
 2212 97.3 CHGA PQ Maniwaki r FF
 2215 88.7 CBOF-9 PQ Chapeau CBC FF mono & lcl talk re Outaouais region.
 2218 101.5 CHIP PQ Fort Coulonges FF sports
 2225 WZPR 100.3 PA Meadville 235
 2300 CHEZ 106.1 ON Ottawa r 150
 2302 CBOF-8 98.7 ON Renfrew CBC FF mono //88.7
 2305 GDMF 94.9 PQ Hull FF m 150
 5 Tr
 0037 WNCO 101.3 OH Ashland 335
 0039 WBTB 101.7 NY Genesee 135
 5 Es
 2122 WZEW 92.1 AL Fairhope "Zoc", phone the "Zoo-line"
 2135 WRBH 88.3 LA N.O. talking book 1225
 2145 WWOZ 90.7 LA N.O. 1225
 2152 KCSC 90.1 OK Edmond 1200
 2157 KOCC 88.9 OK Okla. City still 88.9, not yet 88.5. ID heard 1205
 2159 KEBC 94.7 Okla. City OK 1205
 2200 KBEZ 92.9 OK Tulsa local news 1100/1100 of thedr b'cast hrs: 0900-0200 (CLT of course)
 2201 KWGS 89.5 OK Tulsa full ID with a ment.
 2202 KSPI 93.9 OK Stillwater 1160
 2203 KWEX 97.3 OK Wetherford
 2204 KLAW 101.5 OK Lawton 1285
 2205 KLTE 101.9 OK Oklahoma City "K-Light" 1205
 2207 KDCK 95.5 KS Dodge City "DCK" 1230
 2215 KMUV 89.1 KS Wichita 1105.
 8 Tr
 0030 WICB 91.7 NY Ithaca "CB-92" 195
 0745 WSKG 89.3 NY Binghamton 225
 8 Es
 2130 KOBC 90.7 MO Joplin lcl bb game ID 1000
 2131 KNFB 94.3 OK Nowata k
 2132 KWEN 95.5 OK Tulsa "K-95-FM" 1100

JULY 11 Tr
 0735 WTKS 106.7 PA Beaver Falls "Kiss-107"
 2145 104.9 w/Detroit Tigers bb, & their net list says WFCY AND WELL, Both would be new here, but I'll never know who!
 2150 WSAB 89.3 MI Spring Arbor "FM-89" wx 350
 2155 WBCI 90.3 IN Fort Wayne g 425
 2159 KMMU 90.7 MO St Louis ID heard!
 2203 WMMN 98.5 MI Coldwater 745
 2230 WIAN 90.1 IN Indianapolis ID, end of "Music Mountain" synd. prgm. 525
 2241 WUGN 99.7 MI Midland end synd. "Nite-sounds" a gc prgm out of Wheaton IL; ID
 2242 WHEE 92.5 OH Toledo "T.'s favorite, W. #325
 2300 WUJC 89.1 IL Mount Carmel ID, end UPI nx
 2310 WCEW 94.5 MI Mt. Pleasant 325/ IL:660
 12 Tr
 0008 WTCM 103.5 MI Traverse City wx 350
 0630 WIAA 88.3 MI Interlochen "Peninsula wx" 365
 14 Tr 280 & 155 mi:
 1745 WNNN 96.1 MI Bay City ID/QTH Es on low FM
 2145 WSEN 92.1 NY Baldwinville k Es now over 14 Es
 1736 WPCS 89.3 FL Pensacola wx 1120
 1830 KBFL 90.3 MO Buffalo wx 915
 1831 KWGS 89.5 OK Tulsa wx 1100
 1835 KOSU 91.7 OK Stillwater 1160
 1836 WTYX 94.7 MS Jackson 1085
 1840 KMDD 97.5 Tulsa OK 1100
 1841 KCFO 98.5 OK Tulsa ga 1100
 1844 KWEN 95.5 OK Tulsa wx "K-95" 1100
 1850 KNLU 88.7 LA Monroe
 1851 KTFX 103.3 OK Tulsa 1100
 1857 KTEB 93.3 OK Ada 1200
 1900 KNJN 92.9 TX Wichita Falls "FM-93" 1320
 1905 KHME 96.7 OK Comanche
 1906 KWES 97.1 AR Camden "FM-97" 1110
 1909 KLRG 98.1 OK Lawton 1285
 1915 KMBQ 93.7 LA Shreveport 1190
 1919 KLIJ 99.9 TX Wichita Falls 1320
 1924 KJYO 102.7 OK Okla. City 1205
 1928 KSSN 95.7 AR Little Rock "Kissin'" 1020
 1929 KNUE 101.5 TX Tyler 1270
 1931 KKNQ 92.5 OK Okla. City 1205
 1935 KREK 104.9 OK Bristow
 1939 KEBC 94.7 OK Okla. City 1205
 1940 KPKF 94.1 KS Kansas City "KFM-94" wx 925
 1950 KEZO 100.3 AR Jacksonville "FM-100" b 1000
 1953 K.C. Royals' bb 107.3 (v.s. Cleveland) 892.1
 1958 KRPT 103.7 OK Anadarko 1260
 2013 "K-Star" k KSTR , KSIR...on 102.9 or so ???
 17 Tr
 1207 WHTT 89.1 NY Schenectady wx 275
 1210 WAZG 100.9 NY North Syracuse "Sky-101" pri70
 1215 WAQK 95.3 NY Manlius 95-X pr 180
 1220 WUUU 102.5 NY Rome "Soundtrack of the 60's" synd. prgm. 195
 1250 91.9 CPFC ON Kingston Queens U. stn 110
 18 Tr
 0659 WKYK 90.3 KY Morehead 530
 0700 WCMU 89.5 MI MtPleasant "CMU Public R." 325
 0701 WQED 89.3 PA Pittsburgh
 1900 CKLN 88.1 ON Toronto new stn out of Ryerson Polytechnical Institute 50 w. ERP; prjc Any song I hear on CKLN the chances are I've never heard it before; ie, they aren't "Hit" oriented radio.

19 Es
 1825 KCCM 91.1 MN Moorhead newsclcl 905
 1827 KQDY 94.5 ND Bismarck "Soo Cycle" ad
 1828 KYYY 92.9 ND Bismarck both1105
 1830 KFJM 89.3 ND Grand Forks wx 930
 1831 KAKB 91.7 MN Grand Rapids 755
 1832 KYYZ 96.1 ND Williston 1245
 1833 KCBV 97.1 ND Minot "FM-97" wx called Minot the "Magic City" Minot: 1135
 1834 KIZZ 93.7 ND Minot "Magic City" also
 1837 CBKF4 91.9 SA Bellegarde CBC FF mono
 1847 WKRQ 93.9 MN Hibbing k 725 / 1465
 1904 GITI 92.1 MB Winnipeg pr 965
 1904 QLA 94.3 CHIQ MB Winnipeg pr 965
 1906 CHMM 97.5 MB Winnipeg 965
 1908 CFMQ 92.1 SA Regina mr 1315
 19 Tr
 1930 CB.. 90.7 ON Kapuskasing 370
 22 Tr
 2235 WIOT 104.7 OH Toledo r "FM-104" 325
 2240 WLOR 101.5 OH Toledo bm 325
 2245 WOSE 94.5 OH Fort Clinton k
 2247 WIAA 88.3 MI Interlochen ID & Fund-raising, phone 276-9292
 23 Tr
 0900 WKYO 104.9 MI Caro "Caro Gas & Oil" ad & news 1100
 23 Es I believe these to be AURORALLY induced, as well as those of next day, 24 JULY. There was Au activity most times the Es MUF wasn't up there.
 1030 KYEZ 93.7 KS Salina
 1040 KDCK 95.5 KS Dodge City 1230
 1055 KKKY 96.1 OK Oklahoma City "KKY" 1205
 1058 WFSU 91.5 FL Tallahassee
 1105 KPKF 94.1 KS Kansas City k 925
 1107 WMOG 95.7 FL Clearwater "Magic 96" 1220
 1220 KDKI 88.3 IA Alexandria hrd after a brief absence from my radio
 1221 WQID 93.7 MS Biloxi 1160
 1222 WRBH 88.3 IA N.O. Talking Book 1225
 1225 KTSU 90.9 TX Houston 1410
 1230 WUFT 89.1 FL Gainesville 1090
 1245 WEZB 97.1 IA N.O. "B-97" 1225
 1255 WJAD 97.3 GA Bainbridge "97-Rock" 1030 "Kasey Kasem" synd. rock prgm.
 1300 unID 90.7 (remote chance 90.5) w/ soul-disco and ment. of "AM-1480"
 1303 WPAP 92.5 FL Panama City "92-WPAP" & also AP news 1105
 1310 WVOC 102.9 GA Columbus 940
 1315 WSCA 100.9 AL Union Springs "A-101" & "Farm & Ranch" netwk; oldies & rock
 1330 A very severe case of AURORA when Es dips off FM. Au MUF at least TV-13 & is intense, even up there, thus I'd guess the MUF to be much higher. No, I didn't check UHF; unfortunately, I didn't even have time to DX FM. I hope SOMEONE will rep't this?
 24 Tr
 0000 WBCI 90.3 IN Fort Wayne g
 0020 WHEE 97.3 IN Fort Wayne r
 0101 WBNY 91.3 NY Buffalo pr recently new to the airwaves
 24 Au (I finally gets de chance...)
 0030 KOEL 92.3 IA Oelwein k turn page!→

JULY 24, Au cont.

PAGE 11 !

0100 WBLV 90.3 MI Twin Lake NPR, s-off
 24 Es
 1015 WPAP 92.5 FL Panama City
 1017 WWML 93.9 FL Miami Beach
 1020 WPCV 97.5 FL Winter Haven
 1028 unID 89.3 Bible Study Hour; I'll check their Toronto office; prob a FL.
 1030 WERJA 88.1 SC Sumter stn. net list
 1031 "American Country Countdown" 92.3 - AL?
 1033 WDI2 100.3 FL Orlando r
 1035 WCKO 102.7 FL Pompano Beach "K-102"
 1045 WJCG 95.7 FL Clearwater
 1051 WDJC 93.7 AL Birmingham
 1055 WQYK 99.5 FL St Petersburg k
 1058 WAIW 96.9 FL Jacksonville "97WaveFM" & synd. prgm. "Soundtrack of the '60s"(r)
 1059 WJCF 89.9 FL Orlando
 1100 WDNF 88.5 FL Tampa SS QTH
 1105 WJFE 90.7 FL Orlando "FM-90-plus" & fundraising.
 1110 WRQJ 104.7 FL Tampa
 1112 WSRZ 102.5 FL Sarasota "MusicWave-102.5"
 1115 WWSA 107.3 FL St Petersburg "FM-107" b
 1120 WFTW 89.1 FL Gainesville "Classics-89", ID & phone for a bumper sticker 392-5200
 1130 89.5or7 Back to God g synd prgm.
 1228 WCVU 94.5 FL Naples
 1230 WRMB 89.3 FL Boynton Beach g
 1235 WOVV 95.5 FL Ft Pierce
 1238 90.1 in SS WHO????????????????????
 1245 WIRS 90.7 FL "\$91" FRENCH program, later in EE, both times fundraising (WMFE FL also after \$ - fun to hear the 2 go at each other. Also said their "signal is bouncing to Chesapeake Bay (VA) and CT"; SO WHO CALLED?????
 1250 WAFG 90.3 FL Fort Lauderdale
 1300 WKPX 88.5 FL Sunrise "The Big 88", "K-Pik"
 1315 WDMK 92.1 FL Destin "K-92" ment "Panhandle" MUF off FM, to return later; The following also includes much of what I had earlier, but I decided NOT to relog, although MUF went below TV-2, and this WAS a whole new opening(of sorts) whatever....
 1834 WMSB 92.1 FL W. Palm Bch "Wings-92"
 1840 WINZ 94.9 FL Miami Bch
 1841 WEDR 99.1 FL Miami
 1843 WKOS 100.3 FL Plantation Key
 1844 WWJF 106.7 FL FtLauderdale
 1847 WIRK 107.9 FL W. Palm Beach k nx
 1849 WFTN 92.5 FL Key West Sung ID, also "WFTN 92.5"
 1853 WDEB 92.3 FL Orlando "K-92" k wx
 1859 WLRN 91.3 FL Miami
 1901 WIZD 98.7 FL Ft Pierce "99-IZD"
 1902 WHOC 96.5 FL Orlando k
 1904 WINK 96.9 FL Fort Myers "97-Rock"
 1916 WTLG 88.3 FL Starke g
 1919 WCKS 101.1 FL Cocoa Beach "CK-101" wx
 1930 WUSF 89.7 FL Tampa
 1948 unID 92.5 (or.7?) SS ????
 1950 WMBZ 97.1 LA New Orleans "B-97"
 1958 WWOZ 90.7 LA New Orleans jazz
 1959 WNWG 89.9 LA New Orleans
 2003 KZZQ 94.3 LA Galliano "Z-94"
 2018 WCKW 92.3 LA LaPlace this stn in well; at 2255 or so, they mentioned a caller from ALDEN NY, MIKE EHRHARDT, so it seems the Es really got around this weekend!
 2019 ONLY A FOOL WOULD GO FISHING DURING THE BEST Es OPENING OF THE SUMMER; oh well..

2145 I return with one nice Bass & WDEF 92.3 TN Chattanooga
 2150 KSMB 94.5 LA Lafayette local birthdays
 2153 Joe Gragg, here's the "Stereo Amistad" on 91.5/7 I told you about at Dunkirk. Was in SS & Mexico's not out of the question.
 2155 WJSU 88.5 MS Jackson
 2158 WJCG 90.7 FL Panama City
 2201 WLMW 92.3 AL Montgomery k
 2202 WJWF 88.1 FL Pensacola/U.of Western FL
 2210 102.9-3.1 w/ "The Big X" "covering N.FL etc..."
 2218 WPMO 99.1 MS Pascagoula
 2220 WJUF or WJVF? 96.7 MS Gulfport w/ lots of local anct's & "\$-97". A relog so ignored
 2230 WBSN 89.1 LA New Orleans FINALLY!
 2231 WOKK 97.1 MS Meridian
 2245 WQST 92.5 MS Forest
 27 Es
 1229 WQOX 88.5 TN Memphis "88X" pr
 1233 KOSU 91.7 OK Stillwater
 1235 824-9494 # given by the stn on 94.1/3 so when I get time I'll make a few PERSON TO PERSON calls to ID
 27 Tr
 1728 WKAR 90.5 MI East Lansing wx
 28 Tr during pouring rain!
 2000 WMMU 90.1 MI Marquette ID, "Public Radio 90" in well 455 miles
 2105 CFTI 92.1 ON Timmins much wanted k
 29 Tr still raining & 300plus mi. stuff in
 0040 WMBN 96.3 MI Petoskey mb & area DX
 30 Tr Still kinda dull out
 0420 WTCM 103.5 MI Traverse City 350 mi.
 0440 WJXX 101.1 WI Green Bay rp 475 mi.
 AUGUST
 1 Es
 1135 WFME 90.7 FL Orlando "FM-90plus" 4-10 Away at convention & travels In Dunkirk we fared well into IL MI WI IN PA ON PQ (I missed the PQ opening) etc... & word has it Toronto area had little of that; basically into Ohio.
 11 MS
 0653 WCKN 101.1 SC Anderson ID
 12 MS
 2232 KMZU 101.1 MO Carrollton ID MS Relog
 WDJQ 101.3 (2324 time) MS Meridian tent as hrd "Q-101" & talk about the stn.
 13 MS
 0614 KBHT WAKQ 101.1 both would be new except all I heard were 2 slogans back to back: KB-101 and KQ-101...in diff. bursts in one minute of each other; diff ancrs (male/fem) Bemidji MN & Russellville KY
 1148 KQJY 94.5 ND Bismarck "...wx for the Bismarck area" new MS state.
 1222 KBEC 94.7 OK Okla. City ID
 13 Tr
 1149 WCFN 94.5 MI Mt Pleasant k
 14 Tr
 0915 103.5 "Ici Radio Canada" FF // lcl 96.5 & my guess is CHM-1 PQ arelog, & I'll check to see if they're affiliate to CBC-FF.
 0916 WDTN 90.9 MI Detroit 280 mi. most area also in quite well.
 1000 CBON-21 ON Gogama 104.9 CBC-FF

I'll leave it here, until Nov., take care, 73sl

TELEVISION NEWS

Bill Fahber, editor
 336 Atlantic Street
 Bridgeton, NJ, 08302

APPLICATIONS FOR NEW TELEVISION STATIONS
 CH ERP HAAT STATE/CITY/APPLICANT
 21 4900 345 AL Mobile; Way of the Cross
 29 5000 317 AL Selma; Way of the Cross
 47 96 513 AL Tusculumbia; Kadd Communicat'ns
 6 45.1 3182 HI Kailua-Kona; Manulele Broadeg
 36 4950 303 KS Hutchinson; Way of the Cross
 36 2685 775 LA New Iberia; Blue Rose Telev'n
 36 1390 471 LA New Iberia; Channel 36 Bc'g
 36 5000 464 LA New Iberia; Commerce Broadeg
 36 5000 697 LA New Iberia; Guadeloupe Enterprises, Inc.
 36 2692 900 LA New Iberia; Tres Video, Inc.
 18 1352 592 KS Salina; Salina Television Inc
 46 1000 1151 MI Port Huron; Haney Communic'ns
 46 3900 914 MI Port Huron; TV 46 Corporation
 35 1122 1098 PA Philadelphia; Independence Public Media of Philadelphia
 15 690 520 SD Rapid City; Midcontinent Bc'g
 16 13.7 219 WI Manitowoc; Hiawatha Valley Communications, Inc.
 APPLICATIONS AMENDED
 66 3459 1528 CA Vallejo; Bay Area Community Television, Inc.
 66 3443 1528 CA Vallejo; Golden State Telev'n
 36 n.c. 980 FL Cape Coral; Cape Coral Broadcast Production & Management Corporation
 44 2049 n.c. AL Gadsden; Anthony Jay Fant
 CONSTRUCTION PERMITS GRANTED
 23 2109 465 TX Garland; International American Broadcasting Company, Inc (FCC Review Board decision, upholding initial grant)
 48 600 406 MS Natchez; MSLA Broadcasting (Engineering data is from an application by Signal America instead of MSLA for some reason. Can't figure that out.)
 20 3148 2548 CO Denver; Alden Communications
 64 1063 2765 CA Stockton; Family Stations, Inc
 7 100 1813 NV Winnemucca; Matlock Communic.
 15 192 697 KS Wichita; Kansas Public Telec.
 APPLICATIONS DISMISSED BY THE FCC
 ● Richardson, TX; channel 23; Buena Vista Telecasters of Texas, Inc.
 ● Denver, CO; ch. 20; Colorado Television, Inc.; Oak Television of Denver, Inc.
 ● Vallejo, CA; ch. 66; Redwood Television Ministries, Inc.
 ● High Springs, FL; ch. 53; William F. Parrish
 ● Jamestown, ND; ch. 7, Jamestown College
 ● Sacramento, CA; ch. 29; El Dorado Television Company; Sacramento Entertainment Television, Ltd.; Sacramento Television Associates, Ltd.; Trefoil Broadcasting Co., Inc.
 ● San Bernardino, CA; ch. 30; Black Media Coalition
 ● Springfield, IL; ch. 49; Henry C. McCall
 ● Houston, TX; ch. 61; DHL Broadcasting Co.

APPLICATIONS TO MODIFY CONSTRUCTION PERMITS
 23 1666 1033 IL Decatur; Decatur Foursquare
 50 5000 702 NH Derry; WNDS
 45 2940 1110 NY Schenectady; WUSV
 43 2210 1150 TN Knoxville; WKCH-TV
 32 1070 1055 WI Appleton; WBOC
 18 575 2829 PR San Juan; WSJU
 67 2612 n.c. NY Smithtown; WSNL-TV (on the air)
 2 n.c. 1970 NM Santa Fe; KSAF-TV
 44 1236 972 IN Evansville; WAFV
 APPLICATIONS TO CHANGE EXISTING FACILITIES
 2 42.7 2900 NV Reno; KTVN
 53 2500 1887 CA Fresno; KAIL
 12 316 n.c. NM Farmington; KIVA-TV
 42 1423 461 NC Charlotte; WTVI (amended, see last month.)
 CHANGES GRANTED IN EXISTING FACILITIES
 ● WBGU-TV, Lima-Bowling Green, Ohio, was granted a construction permit to change to channel 27 from channel 57. Power raised to 1000kw Max. from 740 kw Max./479 kw Hor. Same tower but 3' lower (1051' AAT). Channel 57 is a noncommercial assignment to Lima; channel 27 is a noncommercial assignment to Bowling Green, so this change will mean switching to an assignment of another community.
 ● WDSI-TV, ch. 61; Chattanooga, Tennessee. Power increase from 2218 kw max/946 kw hor to 4613 kw max/1972 kw hor. No change in tower height or location.
 34 WMGC-TV, ch. 34, Binghamton, New York. Power increase from 204 kw to 679.38 kw max/470.34 kw hor. No change in antenna height or location.
 CALL LETTERS APPLIED FOR: CHANGE EXISTING
 CH C.L. STATE/CITY/APPLICANT
 69 KTTY CA San Diego; KSDT
 8 KBCT-TV NE Albion; KONA-TV
 22 WNJX-TV PR Mayaguez; WQRD (not yet on air)
 CALL LETTERS ASSIGNED: NEW STATIONS
 44 KLUJ TX Harlingen; The Wings of Faith
 22 WQRD PR Mayaguez; Ana J. Plaza
 61 WDWI DE Wilmington; Delaware Valley Broadcasters
 CALL LETTERS ASSIGNED: CHANGE EXISTING
 63 WTLN VA Richmond; WRNX (not yet on air)
 4 KCNC-TV CO Denver; KOA-TV
 17 WXMI MI Grand Rapids; WMMA-TV
 42 WUIA-TV PR San German; WWIA-TV
 STATION ON THE AIR
 ● KDVR, channel 31, Denver, Colorado, went on the air October 10, 1983. 5000 kw max./1140 kw hor (as per CP modification granted 3/29/1983); 1038' AAT/375' AG/7730' ASL (as per same); Coordinates 39°43'43"/105°14'12"; TL on Lookout Mountain, near Golden, Colorado (as per CP modification granted 11/29/1982). Address: Centennial Broadcasting Corp., 100 Speer Blvd., Denver, CO, 80203. Independent station.
 ● WNDS, channel 50, Derry-Nashua-Manchester, New Hampshire, went on the air September 5, 1983. 1430 kw max/914 kw hor; 702' AAT/499' AG/983' ASL. Coordinates 42°44'07"/71°23'36"; TL Trigate Road on Merrill Hill. George

Mileon and Phil Sullivan both reported very weak signals from the station. Phil is only 25 miles away from the station, has an eight bay bottle and preamp, and can get only a very snowy picture. George called the station and was told that they were operating at reduced power, and will be for a while until they get the bugs out of the system. (Terminix will do the job right away!) (Somebody said that they were going to transmit from atop a five hundred foot tall ant.) As noted earlier, they recently applied to the FCC to increase their power to 5000 kw max. Phil reports that the station is independent. Address: CTV of Derry, Inc., Box 80, Sudbury, MA, 01776.

STATION OFF THE AIR

WKBS, channel 48, is now a thing of the past. Its last program was College Football, in which Nebraska slaughtered Penn State. After the game, a fifteen-minute videotape was played showing all the employees being caught off-guard by the cameraman, while tear-jerker music played in the background. Then the station manager gave his farewell as the lights faded out. Instead of the usual National Anthem, "The Sounds of Silence," by Simon and Garfunkel was played. At about 12:50 a.m. on the morning of August 30, the station shut off for the last time.

To all of our friends, thanks for your support over the years!



CONSOLIDATED HEARINGS

- * Fort Collins, Colorado; channel 22; Fort Collins Television, Inc.; Fort Collins Telecasters; Women's Broadcasting of Fort Collins; Eagle 22, Ltd.; Fort Collins Minority Broadcasting Company. Transmitter sites proposed by applicants are from 25 to 29 miles from the Table Mountain Radio Receiving Zone, which broadcasters are required to protect from harmful interference (see section 73.1030(b) of FCC rules).
- * Tuscaloosa, Alabama; channel 17; Local Majority Television; George E. Gunter; Channel 17 of Tuscaloosa, Inc.
- * Topeka, Kansas; channel 43; Arapahoe Silent Majority, Inc.; Channel 43, Inc.
- * Odessa, Texas; channel 30; Local Majority Television; George E. Gunter.

CANADIAN NEWS FROM WALTER PATTON

"(The CRTC has authorized CANCOM, the company acting as a common-carrier providing the satellite signals to be used in remote areas, to carry the programming from WJBK-2 (CBS) and WTWS-5 (PBS) Detroit MI and KING-5 (NBC) and KOMO-4 (ABC) Seattle WA. The Company had originally wanted to carry the 4 U.S. Network signals out of Detroit but complaints about the time differences across the country resulted in the split feed.

CANCOM has reapplied, however, to carry WDIV-4 (NBC) Detroit. Accompanying this ruling, the CRTC stated that only in extraordinary circumstances would the U.S. signals be permitted to be broadcast over the (air), either clear or scrambled, perhaps out of fear of copyright complications.

"One of the results has been that several operators looking to supply CANCOM service, have reversed field and changed their applications to a request to supply cable, rather than scrambled over-the-air service. A few already licensed have also requested a change in status.

"The CANCOM originated service has been less successful than had been anticipated. In the past two years the CRTC had approved 450 applications to supply CANCOM signals to over 850 communities (both cable and broadcast) but as of April 30 only 75 were in operation to 125 communities. Perhaps here cost is a problem, most of the suppliers charge three or more times what the cost of a conventional cable service would be.

"The data published in the Canada Gazette for these CANCOM rebroadcasters has been inadequate, generally giving only the community name and signals to be carried with no other information on channels to be used or power, in some cases substantial, and many times being unclear as to whether several communities are to be served by one set of transmitters or many. This is true of both companies operating a commercial service with STV or communities with unscrambled signals being paid out of taxes.

"Licensed operators are also in competition with illegal installations. These broadcast signals received from various satellites, especially pay-TV types available off U.S. birds. There are hundreds (thousands?) of these outlaws in remote communities. A cousin of mine, who lives in a north central BC community, told me of a letter he had written to the local newspaper complaining about the local broadcast society, which rebroadcast explicit material in the early evening hours due to the time-zone difference between the east and west coast. In his letter he also complained that the group, of which he is a paying member, was transmitting an inadequate signal. Sure enough, people from the society arrived at his home the next day to see about his reception difficulties only to find that his antenna, mounted on a pole beside his house, was by then completely covered by snow (the real kind). Some days you can't win.

"The CRTC has refused to license religion-only stations, especially those with a particular point of view. In its stead, they will allow a third-party operation to supply cable systems with religious programming. The system must be available to any religion which wants time and solicitations may only be for funds to cover the actual cost of broadcasting.

"At the same time the regulatory agency is accepting bids to supply cable services such as the above religious programming, news, sports, children's programming and others

which would be available on an extra-cost basis but which would have advertising to keep its costs moderate. This would be the first time advertising could be sold by other than regular broadcasting stations. Canadian broadcasters who have examined the financial aspects of these services have been less than enthusiastic, and proposals have been made to use signals off U.S. Satellites such as ESPN and Ted Turner's CNN, perhaps augmented by Canadian inserts.

"One national pay-TV service, C-Channel, a cultural service, failed after just three months, having attracted less than fifty thousand subscribers. There were a couple of over-the-air licenses to carry this channel in the Maritimes.

"It has been the position of the Federal Government here, to enhance cable-TV, already available to 70% to 80% of Canadians as a way of strengthening Canadian broadcasting (read reducing the influence of American TV) and while they have recently indicated that they would not prosecute individual owners of TVRO dishes they have indicated that they will crack down on apartment SMATV and their use by bars and hotels. (They are much too late and won't have public support).

"At a recent European Conference setting international regulations regarding DSB (the RARC-83 convention held in Geneva last June. -wbf), the Canadian delegates urged that only low and medium power transponders be used in satellite broadcasting, ostensibly to prevent interference in adjoining countries. However, the US indicated it intended to go ahead with high power transmitters allowing reception with simple 1 meter dishes.

"Canadian broadcasters fear that if signals from satellites are available internationally, in this case U.S. cable and private interests receiving Canadian satellite signals, then U.S. Broadcasters claiming infringement of their exclusive programming guarantees from the major U.S. networks, might result in Canadian networks no longer being able to carry U.S. programming on a pre-release or simulcast basis."

NEW TRANSMITTERS AUTHORIZED

- CH ERP CITY, PROVINCE, ORIGINATING STATION
- 13 24.9 Huntsville, Ont; CICA(19) Toronto TVO
- 51 60.0 Penetanguishene, Ont; " "
- 42 0.83 Ayer's Cliff, Que; CBMT(6) Montreal/CBC

CHANGES IN SIGNAL STRENGTH GRANTED

- 11 0.67 Marten Mountain/Slave Lake, Alta, CBXAT-11. from 1.14 kw.
- 29 0.10 Two Hills, Alta; CBXT-10, from 0.01kw
- 21 0.10 Viking, Alta; CBXT-9, from 0.01 kw
- 11 38.6 McCreary, Mb; CKX-TV-3, from 31.8 kw
- 12 58.9 Baie Trinite, Que; CIVF-TV, from 31.8
- 35 3.68 Gaspé, Que; CIVK-TV-3, from 2.56 kw

CHANNEL CHANGES

- 16 Riverhead, Nfld; CBNT-40 (from ch. 5)
- 57 Toronto, Ont.; CITY (from ch. 79, as of July 3, 1983. Both to be on for a month)
- 5 L'Anse a Valleeau, Que; CHAU-TV-9 (from 7)
- 7 Murdocheville, Que; CHAU-TV-12 (from ch.5)

CALL LETTERS

- 12 CITF-TV Baie Trinite, Quebec
- 35 CIVK-TV-3 Gaspé, Quebec
- 8 CFSN-TV Dawson Creek, B.C.
- 10 CBLIT Armstrong, Ontario
- 4 CJBN-TV-1 Dryden, Ontario
- 4 CJBN-TV-2 Fort Frances, Ontario
- 5 CBLJ-TV Hearst, Ontario
- 8 CJBN-TV-4 Ignace, Ontario
- 12 CJBN-TV-5 Red Lake, Ontario

APPLICATIONS FOR NEW TRANSMITTERS

- 39 0.10 Cherryville, B.C. KNOW (Knowledge Network of the West Communications Authority, British Columbia's educational TV, normally only on cable.)
- 22 3.45 Powell River/Comox, B.C. SRC
- 5 0.59 Camp LA-1 (James Bay), Que. SRC Anik

APPLICATION FOR CHANGE IN SIGNAL STRENGTH

- 4 1.28 Edmundston, N.B., CIMT-TV-1 (from 1.22)

APPLICATION FOR CHANNEL CHANGE

- 12 Camp 821 (Manic 3) Que; CHQN-TV-3 (from 9)

FORUM

Bill Draeb reported some translator shenanigans on the night of August 18. It seems that W69AV, covering Leland and Sutton's Bay area, was rebroadcasting WHME, ch. 46 in South Bend, Indiana, instead of its primary, WCML, ch. 6 in Alpena, Michigan. This indicates that W69AV picks up signals from channel 46 instead of receiving channel 6 direct. This makes some sense: It's easier to pick up W46AC in nearby Traverse City than the long distance to Alpena. But according to Bill's report, W69AV didn't seem to be getting W46AC at all. He was picking up both translators very strongly, but with no trace of the W46AC signal on channel 69: just a clear rebroadcast of WHME. W69AV later went off while W46AC continued transmitting. I suspect that the WHME signal overrode W46AC so strongly that the engineer at W69AV must have shut it off for the night, like they're supposed to do but seldom do. The translator later came back on with only slight CCI from WHME. Other news: WWMA, ch. 17 in Grand Rapids became WXMI on August 19. The ch. 66 translator rebroadcasting SIN is K66BV in Detroit. WGGN-TV, ch. 52 in Sandusky, Ohio, claim to be operating at 83.2 kw ERP visual, instead of the 136.14 kw authorized by the FCC. Notes on Iron Mountain, Mich, translators: Ch. 67 carries MTV (satellite network). (Is that the same as W67AO, which was originally supposed to rebroadcast WAEO-TV, ch. 12?) W08BG moved to channel 55 to make way for WIIM-TV, which will broadcast on ch. 8 from Iron Mountain in the future. A channel 57 translator is showing CNN Headline News. (I don't have anything on these translators, so I can't supply call letters or other information.)

Ronald Purdue reports another station dropping STV: WCLQ, ch. 61 in Cleveland, Ohio, is dropping its PREVIEW STV service as of September 1, advertising itself as "The New 61." Heading out to California, we find news from Albert Lobel is response to my uncertainty about KAET, channel 8 in Arizona. They are definitely on the air, and identify as Mesa-

Temple. KAET is the local PBS outlet in the Phoenix area and its studios are on the campus of ASU in Temple with transmitters on South Mountain above downtown Phoenix. All Phoenix area radio and TV stations have transmitters on South Mountain.

Way over on the eastern part of the United States, we start with George Mileon, who sent me a copy of the 7/29 Boston Globe, which was related last month. But he added a comment which never occurred to me: the article made no mention of channel 64, WSTG in Providence, Rhode Island. He mentioned on September 6 that WSTG is still on for only three hours a day in regular broadcast mode. He also confirms that channel 68 is now broadcasting regular syndicated programs (WQTV, Boston).

Phil Sullivan adds on WQTV that the station was off the air from August 31 to September 4 in order to install a new antenna and increase their power. (I'm not so sure that the FCC approved that yet) Phil does say that the station is considerably stronger. He says that he suspects they abandoned the CP antenna (circularly polarized) and gone to a conventional horizontal antenna, giving an additional 3 dB of usable signal. (The Television Factbook doesn't show WQTV as having circular polarization. Either it is outdated or perhaps they weren't running full power previously.) Phil confirms WQTV's syndicated programs, and adds that they are heavy on detective-like police shows.

Going back to George Mileon: He was originally told by what he called a reliable source that WQTV would use the Zenith system and broadcast a second PREVIEW service. George also has a few questions about MDS. Are there any publications or journals that report on MDS applications, permits, etc. as Broadcasting magazine and Television Digest do with VHF-UHF television? Does anybody know where to get a list of MDS and ITFS transmitters and services? I have seen some ITFS information in Television Digest on a few occasions.

RKO'S THIRD TELEVISION STATION ENDANGERED
WNAC-TV in Boston was taken off the air. WOR-TV was saved by politicking (not, as I reported a few months ago, by any legislation by congress). At the time WNAC-TV was under consideration, the Court of Appeals ordered the FCC to reconsider the other license renewals. After reconsidering, the FCC decided to refuse to renew their licenses. KHJ-TV, channel 14 in Los Angeles, California, may be the next one to go. Along with the renewal of its license, the FCC will consider the application for a new station to take its place by Fidelity Television, Inc. There are thirteen other RKO stations awaiting a similar fate, looking toward the results of the FCC's decision to find out what will happen to them. There are 160 applications for new broadcast stations waiting to gobble up those stations.

SPANISH INTERNATIONAL FIGHTS BACK
Continuing the article reported last month: Spanish International Communications Corp., Spanish International Network, and the licen-

sees of KDTV (San Francisco) and KTVW-TV (Phoenix, Arizona) got together and filed an antitrust suit against Spanish Radio Broadcasters of America, charging that they have "combined, conspired, and agreed among themselves to boycott and eliminate the plaintiffs as competitors for Spanish-language radio and television advertising billings and audience share, and have combined, conspired and agreed to monopolize the market for Spanish-language radio and television advertising billings and audience share and various product and geographic submarkets thereof, by, inter alia, eliminating the plaintiffs as competitors therein." The officers and members of SRBA are being accused of "baseless and repetitive claims with the Federal Communications Commission in an effort to bring about the termination and nonrenewal of licenses."

WASHINGTON D.C.
I reported earlier that an administrative law judge proposed that the FCC grant WSCT-TV a construction permit for channel 14. But the losers in the hearing are taking the matter to the FCC's Review Board. The Review Board had questioned the judge's decision to give weight to WSCT's integration proposals and its disqualification of Urban Telecommunications on a financial issue.

SUPERSATURATION AT THE VIDEO INDUSTRY
There seemed to be a boom in pay-TV, until recently. Many of the DBS applicants are now having second thoughts. Some of the recently created cable services have closed down. And as we have been noticing lately, STV is now having problems despite the recent FCC deregulation. Greg Monti sent me an article from the 9/5/83 Broadcasting magazine, which has some interesting comments on STV. As mentioned earlier, STAR shut down in Boston. Oak Television's ON TV lost contracts with stations in Dallas, TX and Phoenix, AZ. Oak blames it on a "high disconnect rate." Cox Communications closed down its STV operation on KDNL-TV in St. Louis. WRBV in Vineland, NJ, is still having financial trouble and is still in receivership as the station is up for sale. Wometco, which supplies STV service to WRBV, blames poor business in that area and in New York on the cable industry. Golden West shut down its operations in Dallas and Oklahoma City. There are now 19 STV stations in operation, compared to 27 last year. Piracy of decoder boxes is another serious problem.

Because of the thickness of the VUD in the past few months, due to heavy reporting, I am keeping this column short. There has been some material sent to me by members on DBS, reports on RARC-83, recent developments which may dim the hopes of STV, and information on DBS in general with a review of satellite TV to report on. Then there's the RETROSPECT article on translators and low power boosters to finish, a report on TV stereo and other uses of TV's aural baseband, a translator update, plus various other articles sent in by club members. This will all be coming in the next few months.

WESTERN TV-DX

Fred McCormack
Box 5221
State University Sta.
Fargo, ND 58105

October 1983

Deadline: 11- 4-83

This month's column is packed with tropo loggings from the midwest (for once, apparently beating tropo conditions in New Mexico). However, Jim Pizzi reports the ID'ing of a fantastic 1300 mile logging of WDLI-17 last June 20th. In Wisconsin, all three reports include long haul loggings of W3GAB from Oakland, Maryland. The distance honors go to Nate Ely's logging at 625 miles. This month, Bill Draeb and Nate joined Ron and myself in experiencing the joys and frustrations of DX'ing Minnesota translators. There were lots of loggings and a few mysteries too!

New ___ New Mode ___ Tent. - t Unidentified - unid S/On - + S/Off - =
ID Color Bars - @ Unid Color Bars - % IHTP - \$ Misc. Test Patterns - &

Nathaniel Ely, 1237 East Johnson St., #2, Madison, WI 53703

CDT

Equipment: Quantum 1110 with 2950 preamp + various traps at 57', C.M. 7' dish with 4990 preamp at 61', 70'/30' runs of .412/RG-11 cable, CD rotor, 1980 System 3 with remote. Tower, QDMX MD-56 (free standing)

July 1983

1 tr 0730 WBCU 57 OH 310	8 tr 0218 WKYT 27 KY 430	12 Es 1404 unid 6 PTA: FL
0808 Detroit U's 315	0225 KSHB 41 MO 405	tr 0002 WLIQ 35 OH 310
Es 1733-1930 unids 2 sse	0227 WCLQ 61 OH 400	14 tr 0140 K32AF 32 MN 270
and ssw	WJAN 17 OH 420	0900 WVUT 22 IN 315
1930 KMD 2 TX 1025	0230 CBEFT17 ON	WTTU 30 IN 305
2 tr 1952 KYFCT 50 MO	(Very weak)	1300 WISH 8 IN 280
3 Es 1834-1930 unids 2 sse	0314 WPGH 53 PA 505	Es 1335 WGBH 2 MA 970
and ssw	0317 WAKR 23 OH 415	17 Es 1420-30 unids 2 s, se
1930 WCLX 6 FL 1305	0328 WXXIX 19 OH 375	18 tr 0214 K14AD 14 MN 315
1948 unid ch 6 PTA:FL	0340 WPCBt 40 PA	(Willmar KSTP- 5)
2100 WKRG 5 AL 860	(AN Religion)	0250 =WRTV 6 IN 280
(unids NBC, CBS, FLT)	0349 WPXI 11 PA 505	Es 1333 unid 2 - XEW net
5 Es 0901 WBRZ 2 LA 880	0356 WTAJ 10 PA 590	1426 XEPM 2 CH 1250
0938 KMD 2 TX 1025	0419 WKEN 27 OH 460	1503 unid ch 5 Mexico
6 tr 0130 WLEX 18 KY 430	0420 WDDHO 24 OH 310	1721 KUTV 2 UT 1175
0200 WHAS 11 KY 400	0429 WUAB 43 OH 400	1800 KBCI 2 ID 1360
0215 WKYT 27 KY 430	0436 KPLR 11 MO 315	KAID 4 ID 1360
7 tr 0000 =KSPR 33 MO 460	0455 WLEX 18 KY 430	tr 1830 W49AG 94 WI 80
=KOZK 21 MO 460	0459 CKCO3 42 ON 480	(Bloomington WHLA-31)
0110 K32AF 32 MN 270	9 tr 0515 WTVQ 36 KY 430	1900 K83AH 83 WI 105
(St. James KSTP- 5)	0000 =KSPR & KOZK 460	(LaCrosse KITC-10)
0202 KMTC 27 MO 460	0052 KMTC 27 MO 460	Es 2007 KNAZ 2 AZ 1325
(TC-27")	0108 =KMEG 14 IA 360	2143 KMD 2 TX 1025
0210 unid 14 PTA: KS	0116 KLDH 49 KS 440	19 Es 1830 WGBH 2 MA 970
(Rel. AN - TBN)	0126 KSHB 41 MO 405	1900 WLBS 2 ME 1050
0216 KSHB 41 MO 405	0233 =KSNT 27 KS 440	1930 WCSH 6 ME 975
0256 KOKH 25 OK 695	2101 KSPR 33 MO 460	(Giant storm moved
0335 KXTX 39 TX	2201 KANE 9 MN 410	through. Hope every-
0349 KTXat 21 TX	2230 KOLR 10 MO 460	one's equipment still
(Not scrambled)	KLDH 49 KS 440	up!)
0417 unid 19 PTA: TX	2244 KNMT 12 MN 380	LS 2200-2300 Lots of
KS (Religious, "...east-	2300 KYFCT 50 MO	blips up and down the
tern Texas...")	10 tr 0039 =KMEG 14 IA 360	dial to the east.
0417 unid ch 29 ssw	0045 KSHB 41 MO 405	20 tr 0930 WKAR 23 MI 240
0420 unid ch 16 ssw	0147 WLEW 13 KS 440	(WIFR blown off the
0430 WTVQt 36 KY	0156 WDAZ 8 ND 580	air last night.)
WXIXt 19 OH	0256 KMBC 9 MO 405	21 tr 0420 WXXIX 19 OH 375
0241 KMTC 27 MO 460	0230 KTBO 14 OK 695	0421 WDRB 41 KY 400
0245 chs 5, 11, and 30	(unid of the 7th)	0434 WKOI 43 IN 315
MO 315	0241 KMTC 27 MO 460	0442 WLEX 18 KY 430
0402 KOKH 25 OK 695	0245 chs 5, 11, and 30	0446 WLKY 32 KY 400
11 tr 0050 WDDH 24 OH 310	MO 315	(Snow free)
0125 KSHB 41 MO 405	0402 KOKH 25 OK 695	0457 WLIQ 35 OH
12 Es 1400 WPBT 2 FL 1305	0125 KSHB 41 MO 405	23 tr 0430 WXYZt 7 MI
WESH 2 FL 1090	Es 1400 WDIQ 2 AL 820	unid ch 7 sse
	1403 KBCI 2 ID 1360	

Nathaniel Ely (continued)

12 tr 0400 KELO 11 SD 400
0405 unid ch 27 south
(Rel. AN - TBN)

23 Es 1420 KMID 2 TX 1025
1438 XEPM 2 CH 1250
1439 WESH 2 FL 1090
KPRC 2 TX 975

27 tr 0150 K47AF 47 MI 200
(Iron Mtn. Movie Ch.)
0150 W59AQ 59 MI 200
(Iron Mtn. WGN - 9)
0154 unid 67 PTA: as
above with "MTV"
0203 W72AA 72 MI 200
(Iron Mtn. WBAY-2)
0203 W75AE 75 MI 200
(Iron Mtn. WLJK-11)
0203 W77AA 77 MI 200
(Iron Mtn. WJMN-3)
0254 KELO 11 SD 400

29 Es 1400 WBRZ 2 LA 880
1430 KMOL 4 TX 1090
1530 KMID 2 TX 1025

August 1983
2 aE 0116 unid ch 2 nww
0136 unid ch 4 nww
0153 unid ch 2 nww
0206 CFAC 2 AT 1325
0208 unid ch 6 nww
0209 unid ch 6 nww
0220 CFON 4 AT 1325
(Auroral hash to ch13
until 0230. Every-
thing gone by 0239.)

3 Es 1401 CFAC 2 AT 1325
1420 CKTV 2 SK 850
1449 CKSA 2 AT 1170

5 tr 0900 WTUW 30 IN 310
0126 K14AD 14 MN 315
7 tr 0217 K14AD 14 MN 315

8 tr 0414 WKYT 27 KY 430
0415 WTVQ 36 KY 430
0425 K32AF 32 MN 270
0444 WLEX 18 KY 430
0446 WDHO 24 OH 310
0448 CKCO3 42 OH 480
0450 WTOL 11 OH 310
0456 WLYK 32 KY 400
0458 WAKR 23 OH 415
0506 WUAB 43 OH 400
0517 WKOIT 43 IN
0521 WNEO 17 NY 525
0530 WSEB 35 PA 465
0535 WCLQ 61 OH 400
0539 WOHU 14 MI 230
0546 WBGU 57 OH 310

10 tr 0414 WDHO 24 OH 310
0417 CKCO3 42 OH 480
0423 KDNL 30 MO
(Snow free)
0426 unid ch 27 south
(Rel. AN - TBN)
0435 unid ch 57 sse
(Rel. choir mx.)
0444 WDRB 41 KY 400
0445 WLYK 32 KY 400
0451 WKIX 19 OH 375
0500 WLEX 18 KY 430
12 tr 0358 K20AD 20 MN 315
(Worthington KSTP-5)

18 tr 2030 WCET 48 OH 360
2042 WBTI 64 OH 360

19 tr 0725 W68AA 68 IL 220
(Danville WAND-17)
0735 WTVQ 36 KY 430
0749 WYUW 22 IN
0804 WQLN 54 PA 465
(S/off til 1600)
0807 WCLQ 61 OH
0811 WDRB 41 KY 400
WFIE 14 IN
0830 WGRB 34 KY 460
2323 K57CN 57 MN
(Wabasha KSTP-5)

20 tr 0000 KTCI 17 MN 235
K50AG 50 MN 315
0010 K34AF 34 MN 370
(Alexandria SPN)
0014 K14AD 14 MN 315
0015 K52AR 52 MN
(Appleton WCCO-4)
0029 K46AG 46 MN 315
(Willmar WCCO-4)
0045 K48AH 48 MN 315
(Willmar KMSP-9)
0100 K50AB 50 MN 270
0104 K38AC 38 MN 370
(Alexandria KMSP-9)
0130 K36AA 36 MN 370
(Alexandria WDAY-5)
K63EM 63 MN 390
(Donnelly KSTP-5)
0138 K58AS 58 MN 300
(Redwood Falls KELO-11)
0200 K4BY 9 SD 485
0216 CHLPT8 61 ON 440
0230 K18AI 18 MN 360
K26AC 26 MN 410
0243 K65BY 65 IA
(Waterloo PTL)
0306 CKGN22 22 ON 510
0319 CFMT 47 ON
0326 unid 15 nww SPN
(W15AB - Rice Lake?)
0345 &CHLPT13t 15 ON
0345 &CHLPT14t 32 ON
0408 K52AB 52 MN 270
0428 CKGN29 29 ON 355
(Sign/On @ 0500)
0443 WAKR 23 OH 415
0453 WKBW 7 NY 525
0457 CKCO3 42 OH 480
0508 unid 57 Canada?
(CITY - Toronto?)
0533 @WHIZ 25 OH 430
0536 WSEB 35 PA 465
0540 WJET 24 PA 465
0600 unid 67 se CBS
0615 K65BY 65 IA
0616 WUAB 43 OH 400
0617 WCLQ 61 OH 400
2148 WJET 53 PA 505
2149 WCLQ 61 OH 400
2247 WLOAC 67 OH 420
2259 WSPJ 51 OH 420
2300 WNEO 45 OH 445
WABD 49 OH 415
(ID'd together.)

21 tr 0004 WAF 21 PA
0007 WPMJ 21 OH 460

Nathaniel Ely (continued)

21 tr 0220 W49AF 49 MI
(Crystal Falls WLJK-11)
0223 W60# 60 MI
(Escanaba ESPN)
0227 W64AR 64 MI 200
(Iron Mtn. CBN)
(Also 59, 72, 47, & 62)
0300 WDLI 17 OH 420
(TBN allnight)
0312 CKGN29 29 ON 355
0330 WTAJ 10 PA 590
0335 WPXI 11 PA 505
0352 &CKCO13t 13 ON
(Same TP as 42.)
0354 WXYZ 7 MI 315
0404 WJKW 8 OH 400
0414 WHIO 7 OH 350
0444 WNEWS 5 OH 400

21 tr 0514 @WHIZ 18 OH 430
0515 unid ch 27 s TBN
23 tr 0059 K20AD 20 MN 315
0100 KMEG 14 IA 360
0133 WFIE 14 IN 375
0145 KSFY 13 SD 400
(Through WEAU-13)
24 tr 0200 WDLI 17 OH 420
0204 WAKR 23 OH 415
0210 WPGH 53 PA 505
0210 &CKGN29 29 ON 355
0225 WCLQ 61 OH 400
CKCO3 42 ON 480
0330 WTOL 11 OH 310
31 tr 0007 W68AA 68 IL 220
0010 WFIE 14 IN 375
0016 KMEG 14 IA 360

First off, some thank you's are in order both to you, Fred, for helping me with my unids, and to Mike Hogan for scrounging up a UHF Translator Guide for me. I had received a notice from HQ that they were out of translator guides, and I sure was disappointed. I hope my comments in the last report did not offend anyone; I do realize that this is a club staffed by volunteers.

The tropo on the nights of July 7th, 8th, 9th, and 10th was truly exceptional and marks my first experience with "super tropo." On the night of the 7th, the distance kept stretching out as it got later and later. First came Missouri, then Oklahoma, and then, tentatively, Texas. I've good enough information to write KXTX-39 and KTXA-21 in hopes of verifying these stations. KTXS is a little more sketchy; I couldn't figure out what movie they were showing. On the 8th, tropo from the southwest was still pretty good, but the opening pressed out to the east bringing in Pennsylvania and, tentatively, New York. During these four nights, I managed to log some new high band VHF stations; always welcome.

The Iron Mountain translators were in again on the night of July 27th. K47AF is definitely showing scrambled movies rather than being fed KTEB. KTEB (Trinity Broadcasting Network) feeds most of the all night religious stations that I've seen. I have reported channel 47 as "The Movie Channel" per Bill Draeb. I also notice that channel 67 is broadcasting "MTV." I assume this is also from Iron Mountain.

Lastly, my mystery channel 45 was no mystery. It was a CATV channel. Seeing the weather channel (3) on UHF channel 30 clinched it for me. Just when I said CATV was no longer a problem! How does this happen?

August seems to have been quite the month for translators and LPTV. The nights of the 18th and 21st were abundant with "pesky" little translators from Minnesota. I saw about 25 of them including 5 LPTV. According to the info sent by Fred (thanks) there are about 148 little transmitters in Minnesota, so this is pretty futile territory. Since it does not take a great act of nature to get into Minnesota, I'll look forward to more stations as time goes on. The most outstanding translator catch for the month was also from a new state. I caught WWPB-31 in Hagerstown and W36AB from Oakland, Maryland signing off the night of the 21st. I was also surprised to see two translators from Iowa and two from Illinois. I saw a new LPTV(?) station from Waterloo, Iowa, K65BY, running PTL Satellite Network. The nights of the 20th through the 21st were outstanding to the east with many new loggings. I hope everybody got a piece of the opening.

The Perseids was pretty unproductive. I saw a TP worth reporting to CCI. Es seems to have died out, but I must admit that I haven't been vigilant enough in monitoring channel 2 to make an accurate assessment.

I'm still bedeviled by a unid channel 27 to the south running TBN allnight. I wrote to WVBS-27 in Westpoint, Mississippi on the off chance that it might be them. The heading matches up well enough, but at 665 miles, I doubt that they would be in that often.

I've eliminated most CATV and VHF interference from my UHF antenna by using a Blonder-Tongue UHF-VHF multiplexer with the VHF port terminated. This works fairly well as a bandpass filter. A big thanks to Doug Dornbos for this suggestion!

That's about all to report. September should be good (I hope!).

(Nate, your K65BY in Waterloo would probably be an LPTV now, but it had its origins before LPTV was created. The Full Gospel Businessmen's Association had a plan (or has a plan) to create a multitude of these satellite fed 'translators' across the nation. The existing operations were probably granted as translators with waivers of the rules to permit program origination. They have W57AO licensed at Robinson, Illinois, among others. Could this explain one of your unids?)

Jim Pizzi, P.O. Box 1778, Lovington, NM 88260 (505)-396-3432

MDT

* DX received on Motorola R-220 receiver (audio).

July 1983

26 Es 2300 XEW 2 DF 960
 27 tr 0800 Houston 20, 26 /
 Es 1230 KDIX 2 ND 936
 1231 unid ch 3 n NBC
 1256 CKTV 2 SA 1188
 1628 unid ch 2 Canada
 1645 KGFET 2 ND
 1656 unid ch 2 north
 1658 CKND# 2 MB 1184
 tr#1710 KSNC 2 KS 450
 Es 1757 WBEM 2 IL 1040
 1800 WMAB 2 MS 828
 2100 WDTN 2 OH 1152
 2141 KUTV 2 UT 707
 2200 KBCI 2 ID 990
 2218 KSL 5 UT 707
 2219 KTVX 4 UT 707
 2220 KIVI 6 ID 990
 2226 KAID 4 ID 990
 28 Es 0937 unid ch 2 Canada
 unid ch 5 north
 0943 CKND# 2 MB 1184
 2000 WESH 2 FL 1346
 29 Es 1215 WCBdt 2 SC
 1227 unid 2 ne 3/4 CB
 1300 KDKA 2 PA 1373
 unid ch 2 ne
 1400 WJFK 2 MI 1260
 1459 unid ch 4 ne
 1503 WBAY 2 WI 1125
 1629 WHBF 4 IL 900
 1630 WKZZ 3 MI 1148
 1707 KIMTt 3 IA
 1711 WCCO 4 MN
 1718 KGAN 2 IA 878
 1832 KXJB 4 ND 990
 KGFET 2 ND 1058
 1846 CFAC 2 AT 1328
 1859 KWSE 4 ND 1035
 1900 CBKT1 4 SA 1184
 1950 WITW 2 IN 981
 2000 WDTnt 2 OH
 2001 WLWTt 5 OH
 2112 KSNBt 4 NE
 2120 WQMH 4 OH 1215
 2126 WYFF 4 SC 1206

29 Es 2126 =WSJK 2 TN 1170
 (STL's- WGR-93, WGR-94)
 (Scratch- 6/25 WGR re-
 port. This is what I
 saw. Watch out every-
 one.)
 2137 unid ch 5
 2159 WMAB 2 MS 828
 2230 K55CV 55 NM 152
 (Montoya KOB - 4)
 K57BR 57 NM 152
 (Montoya KOAT - 7)
 2235 K59BD 59 NM 152
 (Montoya KGGM-13)
 30 Es 1931 WSB 2 GA 1098
 2030 WCIA 3 IL 959
 2255 CKND# 2 MB 1184
 2344 KTVI 2 MO 824
 2345 WITW 2 IN 981
 31 ms 0100 KTVI 2 MO 824
 Es 0930 WJFK 2 MI 1260
 WCIA 3 IL 959
 1030 WITW 2 IN 981
 1414 XEW 2 DF 960

August 1983

2 Es 0759 WKRg 5 AL 936
 0800 WEAR 3 FL 950
 0815 WWL 4 LA 819
 0830 WBRZ 2 LA 743
 5 Es 1800 KTCA 2 MN 968
 CKPR 2 ON 1260
 6 Es 1730 WESH 2 FL 1346
 1800 unids 2-6 east
 KTVU 2 CA 1116
 1827 KNBC 4 CA 855
 1844 KSBY 6 CA 1004
 1845 KEYTt 3 CA
 1900 KTLA 5 CA 855
 2000 KTVI 2 MO 824
 2031 WNGE 2 TN 968
 7 Es 1035 unid 2-6 east
 1128 WJFK 2 MI 1260
 1130 WCBd 2 SC 1359
 1230 WFTM 2 NC 1350
 1300 WSJK 2 TN 1170
 8 Es 1845 KNXt 2 CA 855
 1850 KEYT 3 CA 945

9 ms 0029 KTVI 2 MO 824
 0112 KSNC 2 KS 450
 13 Es 1029 WESH 2 FL 1346
 1030 unids chs 3, 4 e
 14 Es 2042 unid ch 2 ne CBS
 2130 KTCA 2 MN 968
 2135 unid ch 2 ne
 ms 2159 WDIQ 2 AL 1008
 15 Es 2256 CKND# 2 MB 1184
 (In until 0015.)
 16 Es 2126 =WSJKt 2 TN
 2127-2200 unids 2-6 nw
 2201 KBCI 2 ID 990
 2202 KPVI 6 ID 833
 2245 unid ch 5 nw
 2306 KTVU 2 CA 1116
 *2331 KOTI 2 OR 1170
 (A only, KTVU + offset.
 KOTI is a - offset.)
 17 tr 0040 K57CW 57 TX 116
 (Bovina KVII- 7)
 Es 0920 unid channel 2 w
 1400 WSB 2 GA 1098
 1759 WDIQ 2 AL 1008
 1855 CKTV 2 SA 1188
 2030 KFBB 5 MT 1062
 2100 KXGN 5 MT
 2130 KREM 2 WA
 2202 KXLF 4 MT
 21 Es 1756 XEW 2 DF 960
 1758 unid ch 2 Mexico
 23 tr 2300 K67BD 67 NM 135
 (Cedar Canyon KOB- 4)
 Ruidoso xlaters 145
 Montoya xlaters 152
 Plus all other xlaters
 in se & e NM & Bovina
 2340 K76AS 76 NM 147
 (Tucumcari KOAT- 7)
 2344 K63BR 63 NM 147
 (Tucumcari KENW- 3)
 2345-55 Forest xlt 123
 27 ms 0007 KTVI 2 MO 824
 30 tr 0900 Houston20,26 515
 1700 Tulsa 23, 41 473

September 1983

2 tr 0930 Tulsa 23, 41 473

June unids VERIFIED by phone (from information provided by George Rogers)

4 Es 2031 WTAE 4 PA 1373 4 Es 2124 WAVE 3 KY 1049 20 tr 0951 WDLI 17 OH 1310

Called WZTV-17, KCBR-17, WITW-17, WAND-17, and WMMI-17 concerning PTL logging at 0951 on June 20. Verified as WDLI-17 (new calls). They have new ownership. They were very surprised at the distance! Special thanks, again, to George for steering me in the right direction on these unids - especially for WDLI-17.

Well, it looks like Es is gone for now - next Es, December and January. I've been trying my hand now at ms (TV video and R-220 audio). Hope this fall brings some decent tropo, although this summer, tropo were excellent, but brief. Confirming WDLI-17, WMA-17, and WTOG-44 plus a tremendous Es season (FM & TV) makes 1983 my best ever DX year. Until next time, 73's, Best of DX, Jim.

(Congratulations on your logging of WDLI-17. fm)

John Jefferson, 4016 Crest Ct., Pleasanton, CA 94566

PLT?

Equipment: Hitachi CT-922 fed by a Channel Master VHF antenna and a Winegard CH-9095 UHF antenna. Both are on a 20' mast, about 35' off the ground, the UHF is 3' higher, with Winegard AC-4990 preamp (and separate lead). A Bohsei (DX is hooked up to a Radio Shack VHF antenna 15' off the ground. B&W on Bohsei and Radio Shack antenna is marked with an *)

April 1983

29 Es 1113 unid ch 3
 (MUF ch4 @ 1200)

4 Es 1740 unid channel 5
 1800 KTVQ 21 MT 890
 1929 KWGN 2 CO 915
 1934 KNOP 2 NE 1120
 1943 unid ch 4 ABC
 2011 KSNW 3 KS 1315
 2025 KTVY 4 OK 1355
 2136 KMID 2 TX 1175
 5 Es 1402 KMID 2 TX 1175
 (MUF ch4 @ 2130)

May 1983

8 Es 1710-1800 unid ch 2
 (MUF ch3 @ 1715)
 1945-2100 unid ch 2
 (MUF ch4 @ 2020)

2100 CKTV 2 SA 1240
 13 Es 1120 unids chs 3-6
 (MUF 107.9@1148)
 1300 KNME 5 NM 875
 (MUF ch4 @ 1330)

14 Es 1207-1235 unids 2, 4
 (MUF ch5 @ 1225)
 18 Es 1701 unid ch 2 MUF-4
 21 Es 1217 unid ch 2 Canada
 (MUF ch5 @ 1245)
 1315 CKTVt 2 SA CTV
 1500 KDIX 2 ND 1155
 1528 CKTV 2 SA A ID
 22 Es 1142 XEPM 2 CH 970
 23 Es 2032 KDLXt 2 ND
 (MUF 90.1@2048)
 2153 unid ch 2 CBS
 2220 CKTV 2 SA 1240
 2308 CFAC 2 AT 1025
 24 Es 2000 KDIX 2 ND 1155
 2035 unid ch 4 MUF-4
 25 Es 0657 unid channel 2
 0742-0810 unid ch 2
 0758 unid channel 5
 (MUF 100.7@1013)
 unid channel 2
 (MUF 91.7@805)
 0858 unid ch 4 NTV
 (MUF 106.7@1013)
 1059 KOB 4 NM 875
 1100 KAMR 4 TX 1115
 1110 KWGN 2 CO 915
 27 Es 1100 KTWO 2 WY 885
 28 Es 1448 unid ch 4 CBS
 1511 XHBSt 4 SI
 30 Es 0929 unid ch 2 KMID?
 unid ch 3 KENW?
 unid ch 2 Mexico
 (MUF ch5 @ 1232)
 2057 KMID 2 TX 1175
 (MUF 90.7@2109)

2028 KWGN 2 CO 915
 (Just home from work.)
 0208 KWGN 2 OK 915
 off- until 0510)
 (KTVU
 0219 unid ch 2 (TP
 o/KWGN - vert.
 bars, not CB)
 0240 unid channel 6
 (KVIE- off air.)
 0248 unid ch 2 CB
 0305 unids channel 2
 0339 unids 2 Canada
 0354 CFAC 2 AT 1025
 (In until 05431)
 0402 CKRD 6 AT 1115
 (ID'd CB. In to 0424)
 (MUF 103.9@0415)
 0530 CKTV 2 SA 1240
 (ID over KTVU & CFAC)
 1830 unid 4 Spanish
 1837 unid 3 Spanish
 10 Es 1215-1300 unid ch 2
 1220 unid channel 4
 1246 unid channel 6
 1250 unid channel 5
 1300 KNOP 2 NE 1120
 1324 CFAC 2 AT 1025
 1357 unid channel 4
 ("13,
 9, & 4" - KWSE?)
 (MUF 95.5@1402)
 11 Es 1645 unid channel 2
 (MUF 97.9@1736)
 1758 KTWO 2 WY 885
 1828 unid channel 2
 (MUF 91.7@0032)
 12 Es 0036 unid channel 2
 14 Es 0800 XHIT 4 CH 1100
 0807 unid ch4 English
 1254 XEPM 2 CH 970
 1300 KMID 2 TX 1175
 (MUF 93.9@1349)
 1358 XEPMt 2 CH XEW
 (El Paso FM in.)
 1500 XHIT 4 CH 1100
 1649 unid channel 3
 18 Es 1657 unid channel 2
 19 gw 1500 KFCEB 42 CA 13
 (1st day on air)

MAY TOTAL: 14 days of E skip

June 1983

2 Es 1212 unid channel 2
 (MUF ch4 @ 1245)
 3 Es 1300 unid channel 2
 (In until 1530)
 4 Es 1456 KSNC 2 KS 1260
 (MUF 106.7@1635)
 1659 KTWO 2 WY 885

20 Es 0858 unid channel 3
 22 Es 1441 unids chs 2, 4
 1630 KDIX 2 ND 1155
 1645 unid channel 4
 1653 KTWot 2 WY
 unids chs 4, 5
 1656 unid ch 2 MT nxs
 1713 CKTV 2 SA 1240
 1746 KREMt 2 WA
 1759 CKTV 2 SA 1240
 (MUF 107.7@1841)
 1926 KING 5 WA 705
 (Veri by phone.)
 2100 KDIX 2 ND 1155
 2354 CKTV 2 SA 1240
 23 Es 0202 unid ch 2 wk TP
 (From 22nd - KTVU off)
 1055 unid channel 4
 (MUF 107.7@1342)
 24 Es 2119 KSNK 2 KS 1260
 (MUF 99.5@1033)
 25 Es 1620 unid channel 2
 26 Es (MUF 107.7@1545)
 2158 CKTVt 2 SA
 2200 KCSA 2 AT 1225
 (MUF 103.5@2219)
 2321 CITL 4 AT 1225
 (MUF 103.5@2020)
 27 Es (MUF 106.3@2119)
 2149 KMID 2 TX 1175
 28 Es 1002 KMTV 3 NE 1395
 1300 CBUT 2 BC 820
 (MUF 91.9@1304)
 29 Es 1122 unid channel 2
 (MUF ch4 @ 1209)
 30 Es (MUF 106.3@0814)

JUNE TOTAL: 23 days of Es

July 1983

1 Es 0957-1016 unid ch 2
 1013 KTVYt 4 OK
 1100 KAMR 4 TX 1115
 1125 unid channel 3
 (MUF 106.3@1156)
 1209 unids 2-4 Sp-2
 1210 unid channel 5
 1300 KMID 2 TX 1175
 (ID o/ unid Sp - XEPM?)
 1303 KFDX 3 TX 1320
 1458 KTWO 2 WY 885
 1501 KAMR 4 TX 1115
 (MUF 95.5@1508)
 1530 KFDX 3 TX 1320
 (MUF 97.1@1619)
 2201 unid 2 Spanish
 2 Es 1859 CFAC 2 AT 1025
 (MUF 103.5@1913)
 2034-2139 unid ch 2
 3 Es 0955 unid channel 2
 1247 unid 2 Spanish
 1248 unid ch 4 CBS

Table listing TV stations and frequencies for John Jefferson (continued). Includes call letters, frequencies, and channel numbers.

The skip season has been fairly good, though erratic, for FM. TV, alas, hasn't fared well at all. Too few of the unlogged targets are strong enough and in a favorable enough direction to have any reasonable chance to break through the locals.

Such as it is, that's it. Totals stand at 126 for bay area, 123 here in Pleasanton, and 40 at my parents' house in Castro Valley. For this year, seven new loggings, five by Es (one per channel, strangely enough), one via tropo, and one by ground wave (new KFCB-42, some 13 miles from here).

(John, your late night Es on May 8 sure sounds like it was auroral induced. I have watched Canada Es all night long on numerous occasions with strong signals with extreme ghosting at times. It is quite different in appearance from the 'garden variety' E skip. Your unid on May 10 was not KWSE. They would never display channel numbers and would never ID for just those three channels. I strongly suspect you were watching KPRY-4. KSFY-13, KABY-9, and KPRY-4 do sometimes run common identification. fm)

Jeff Kadet, Box 20, Macomb, IL 61455

CLT?

Equipment: Zenith 13" color, Zenith 9" b&w, Stereo Probe 9 antenna @ 30' agl.

Summary table for July 1983 with columns for date, call letters, frequency, and channel number.

Jeff Kadet (continued)

Table listing TV stations and frequencies for Jeff Kadet (continued). Includes call letters, frequencies, and channel numbers.

I wish there was more to report, but I don't have a UHF or a VHF antenna erected yet. Out of extreme curiosity, I've ordered Jim Pizzi's EU-4S UHF preamplifier and will be using it with a Channel Master Diamond Quantum.

Cable radiation was very bad here until July 28 when the worst leak was repaired by the cable company, but there is still some there on channels 2-6. At the local ham club, I learned that this has been a problem for years, but I suspect they'd have to rewire the entire town to eliminate it all.

Since the house I'm renting is surrounded by 70' trees and is less than two miles from the future PBS channel 22's transmitter site, I'll eventually look for a place in the country where I can also put up a 7' dish. 73.

Ronald Purdue - Route #1, Box 224, Byron, MN 55920

CDT

Equipment: RCA 1982 XL-100 color, J.C. Penney 5" b&w portable, Winegard CH-7084 with Winegard AC-4990 pre-amplifier at 28' above ground level.

Table listing TV stations and frequencies for Ronald Purdue. Includes call letters, frequencies, and channel numbers.

Ronald Purdue (continued) August was a superb month for TV DX'ing, with all tropo openings! On the 18th, K47AF in Iron Mountain, Michigan came in with the picture scrambled and audio normal; not on a subcarrier.

On the 20th, several new stations from Ohio came booming in here, but no distance records were broken. It looks like WCLQ-61 in Cleveland will be dropping the "PREVIEW" STV service on September 1 and will become "The New 61" with such programs as "Vegas" on weeknights. (I saw the announcement for it)!

That will wrap up another report for this month. If anybody in the club knows of any stations that plan to drop STV, drop me a line. I hope to bag new stations from PA, NY, and ON next month if DX tropo conditions are just right! See you in 30, '73's.

William Draeb, Ellis St., Rt. #2, Kewaunee, WI 54216

CDT

Lot of DX since my last report. August 18-21 was especially good for tropo. Here goes:

Table listing TV DX observations for June, July, and August 1983. Columns include date, call sign, frequency, location, and signal strength. Includes entries like 'June 1983 28 Es 1215 KPRC 2 TX 1118' and 'August 1983 1 Es 0010 CFRNT 3 AT'.

William Draeb (continued)

Table listing TV DX observations for William Draeb (continued) from 19 tr 2049 to 29 tr 0535. Columns include frequency, call sign, location, and signal strength. Includes entries like '19 tr 2049 K14AD 14 MN' and '29 tr 0535 W55## 55 MI 100'.

Lots of translators this time. As Nathaniel Ely said, - "They were popping up like mushrooms." Some channels were two and three deep. Needless to say, I didn't identify all of them. Some new ones in Iron Mountain, Michigan also. WLUC-6 moved to channel 55 from channel 8 there; so, that new channel 8 should be coming on any day now.

That tropo opening on the 21st to the east was pretty good. Pittsburgh U's at times were overloading my CMA-Ub. I thought that was going to be the extent of it until WKBS-48 showed up with a snowy picture and WRBV-65 showed up about the same as WKBS-48, but it faded in and out every one or two minutes exchanging places with a translator. Fortunately, they were in at 0644:30 when they showed their ID slide and gave an aural ID also. This was followed by the song, "This is My Country", with an Air Force film shown. Before and after this, they ran full color bars with tone until 0700 when programming began. They disappeared at 0705 when thunderstorms moved in here. After that, everything went down hill.

Don Ruland, 4448 68th Place, Kenosha, WI 53142

CLT?

June 1983	8 tr 0600 CITY 57 OH 430	20 tr 2345 WSFJ 51 OH 340
27 Es 2100 WTVY 4 AL 800	0615 WUTV 29 NY 460	WPGH 53 PA 430
	14 tr 0730 WCLQ 61 OH 330	21 tr 0017 W36AB 36 MD 480
July 1983	CLFLT8 61 ON 400	(Oakland WWPB-31)
3 Es 1800 KATC 3 LA 900	16 tr 0545 WJET 24 PA 400	0030 WPTT 22 PA 430
7 tr 0630 WDRB 41 KY 330	WSCE 35 PA 400	0058 WTAP 15 WV 400
	WKOI 43 IN 240	0527 WTAE 4 PA 430
	WKPT 19 TN 510	0530 WTAJ 10 PA 510
23 tr 2330 CBEFT 54 ON 250	0555 WEOA 49 OH 340	24 tr 1800 WGGN 52 OH 280
24 Es 2000 WCIX 6 FL 1250	0600 K66BV 66 MI 250	WQON 54 PA 400
2030 WWL 4 LA 890	(Detroit SIN)	Akron/Cleve. U's
2200 KRIS 6 TX 1160	20 tr 0520 KEYC 12 MN 330	WNED 45 OH 360
2220 KPRC 2 TX 980	0545 WBNY 7 NY 600	Youngstwn U's380
	0600 WUTV 29 NY 460	1830 W6HAK 64 OH 370
August 1983	1600 Cleveland U's330	(Ashtabula WVIZ-25)
8 tr 0600 WCLQ 61 OH 330	Youngstwn U's380	

Fred McCormack, 135 Prairiewood Drive, Fargo, ND 58103

CDT

Equipment: VHF: Broadmoor 9" black & white, Winegard CH-7078; UHF: Magnavox 19" color, Winegard CH-9095, Blonder-Tongue CMA-Uc pre-amp; Alliance rotor.

August 1983	17 tr 2209 WEEK 25 IL 560	18 tr 0631 @WQRF 39 IL 490
7 tr 0157 WHO 13 IA 385	2305 WMBD 31 IL 565	0632 WBBW 55 IL
0710 K23AH 23 NE 460	0005 =WAND 17 IL 620	0653 unid ch 20 PBS
(Wallace KGIN-11)	0015 WQRF 39 IL 490	0700 W15AB 15 WI 255
0742 K15ACT15 SD	0102 =K72BL 72 IA 300	(Rice Lake LPTV)
(Rapid City KELO-11)	(Rolfe WOI - 5)	0723 @NIPB 49 IN 735
0752 WIFR 23 IL 490	0107 K78AW 78 IA 345	0734 @WHA 21 WI 445
0753 WQRF 39 IL 490	(Carroll KCCI- 8)	22 tr 2230 WNDUT 16 IN
0908 KHNE 29 NE 425	0130 =WICD 15 IL 645	2234 WSBT 22 IN
0929 KMNE 7 NE 340	0134 K76BZ 76 IA 465	WSJV 28 IN 635
11 tr 2313 WEEKT 25 IL	(Ottumwa WHO -13)	2308 WMMet 46 IN
2337 t Chicago UHF's	0142 K74CO 74 IA 465	23 tr 0019 t Chicago UHF's
2350 WKOW 27 WI 445	(Ottumwa KCCI- 8)	25 tr 2155 WHA 21 WI 445
12 tr 0003 WMTV 15 WI 445	0150 WOC 6 IA 480	2159 WKOW 27 WI 445
0056 WICST 20 IL	0158 =KWVL 7 IA 395	2332 unid20 b&w movie
0549 +WAND 17 IL 620	0159 KCCI 8 IA 385	28 tr 0249 unid 45 KELO xlt
0557 +WICD 15 IL 645	0200 KGAN 2 IA 400	30 tr 2039 KYFC 50 MO 555
0558 +WICS 20 IL 610	0219 WSAW 7 WI 365	2059 KBIN 32 IA 390
0600 WIFR 23 IL 490	0532 @WIFR 23 IL 490	2258 KYNE 26 NE 390
0627 +WTVO 17 IL 490	0540 KAAL 6 MN 285	31 tr 0539 @KLDH 49 KS 545
0629 WMBD 31 IL 565	0541 @WEAU 13 WI 320	0540 KSNV 27 KS 540
0648 @WQRF 39 IL 490	0542 @WMTV 15 WI 445	
0653 WEEK 25 IL 560	0548 @WICD 15 IL 645	September 1983
0658 KDUB 40(WI) 425	0550 +WAND 17 IL 620	1 tr 2200 K59BE 59 MN 155
0659 WMTV 15 WI 445	0551 +WRAU 19 IL 560	(Granite Hills KQMT- 7)
0742 @WNE 38 WI 455	0554 WMBD 31 IL 565	2208 K69DP 69 MN 155
0759 WTVPT 47 IL	0555 @WLFI 18 IN 675	(Granite Hills WTCN-11)
0929 K6OAB 60 MN 125	0558 +WICS 20 IL 610	2 tr 0659 K78AW 78 IA 345
(Appleton KSTP- 5)	0615 WNDU 16 IN 635	0714 K74EN 74 IA 345
17 tr 2113 WBLN 43 IL 575	0620 @KDUB 40(WI) 425	(Carroll WOI - 5)
2143 WCIU 26 IL 570	@WTVO 17 IL 490	0718 K72BL 72 IA 300
2159 K22AE 22 MN 215	0623 @WFEN 66 IL 570	1135 K38AC 38 MN 90
(New Ulm LPTV)	0625 K74CZ 74 MN 320	(Alexandria xltng
(w/ WCCO 10 PM Report)	(Winona KITC-10)	CKND, normal KMSP-9)
	0629 WSBT 22 IN 635	Es 1158 WBRZ 2 LA 1185

Some interesting tropo during the month with WIPB-49, Muncie, being the most distant at 735 miles. It was interesting to note that K22AE, the LPTV in New Ulm, Minnesota carries WCCO-4 news at 10 PM. They run SPN up to that time, then WCCO (including WCCO ID and bits of WCCO ads), and then at 2230, a locally produced news program. I have on a couple of occasions lately noted a translator on channel 45 translating one of the KELO network. The identity of this station is quite a mystery to me. I would appreciate any information that anyone can provide.

I will be surprised if September matches the performance of August with regard to tropo openings, but of course, I'm hoping that it does.

Fred McCormack, Des Lacs, ND 58733

CDT

Equipment: UHF: Sony 9" b&w TV, Finco 7' dish @ 30', B-T CMA-Uc preamplifier.
VHF: Heath GR371MX 25" color TV, Winegard CH-4054 @ 30', CDR rotor.

August 1983	22 tr 0615 K24AE 24 MN 330	22 tr 0928 KAVT 15 MN 500
19 tr 1630 KWSE 4 ND 110	(Alexandria KSTP- 5)	
1634 KDSE 9 ND 125	0635 WFET 29 MN 455	September 1983
2227 KXLL 41 MN 420	0656 KSINT 27 IA	7 tr 0857 KSINT 27 IA
2254 WPNET 38 WI	0658 K14AD 14 MN 375	0858 KMEG 14 IA 470
2300 KIMA 23 MN 455	(Willmar KSTP- 5)	0859 K68EM 68 SD 220
2303 WFWCT 28 WI	0709 tent. Willmar	(Lowry KPRY- 4)
2341 WKOW 27 WI 685	xltrs-46, 48, 50	0929 K56AX 56 SD 220
2351 WMTV 15 WI	0712 KMEG 14 IA 470	(Lowry KPLO- 6)
2352 WHA t 21 WI	0924 KXLI 41 MN 420	0934 KHINT 36 IA

I got a chance to use a parabolic antenna again while out at Des Lacs. I really enjoyed the directionality of it. I think I could really make good use of one in Fargo when trying to separate the numerous Minnesota translators.



STATISTICS

October 1983

Bob Seybold
Bennett Rd., RD #2
Dunkirk, N.Y. 14048

TV SCOREBOARD

DXer, Location	Rank	Total	UHF	XLTR	ES	MS	AU	YB	As of
Bob Seybold, Dunkirk NY	1	913	438	108	193	30	6	'50	9-83
Bill Draeb, Kewaunee WI	2	849	351	78	189	113	1	'53	7-83
Paul Gaines, Detroit MI	3	515							
Fred McCormack, Des Lacs ND	4	365	24	29	213	45	0	'64	7-83
Fargo, ND		339	66	80	113	1	2	'74	7-83
Mike Hollis, Enterprise AL	5	322	145			58	13	'80	10-82
Jim Pizzi, Lovington, NM	6	309	118	67	106	30	0	'81	4-83
Frank Wheeler, Erie PA	7	288	60	1	122	5	2	'55	7-83
Mike Lapinski, Jamestown NY	8	279	202	44	15	0	0		7-83
Richard Reese, Jersey Shore PA	9	262	45	7	152	28	0	'79	5-83
Fred Nordquist, Clay NY	10	239	102	11	70	3	0	'69	7-83
Nathaniel Ely, Madison WI	11	170	78	7	15	2	0	'82	5-83
Saul Chernos, Toronto ONT	12	161	6			94	7	'76	
" Burnt River ONT		60	23			12		'79	
Ronald Purdue, Byron MN	13	130	58	22	26			'81	5-83
William Hepburn, Resolute Bay NWT	14	1							

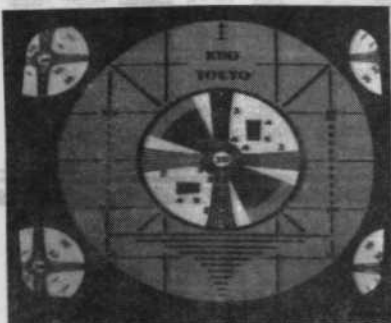
As an added feature I am going to list some individual records for DXers who send in some of their own records. So in future if anyone sends in their own personal DX records I will print them in the Stats column when time and space allow. So let's have more reports here. Here are some of Michael Hollis's records (from Enterprise, Alabama):
 KTBC 7 Austin TX 730 miles
 WNEP 16 Scranton PA 900 miles
 KQMS 8 Laredo TX 880 "
 KLRU 18 Austin TX 730 "
 KLRN 9 San Antonio TX 780 mi.
 WBRB 28 Wilkes Barre PA 900 mi.
 WNEP 11 Nuevo Laredo MEXICO 880 mi.
 WTAF 29 Philadelphia PA 880 mi.
 KSAT 12 San Antonio TX 780 mi.
 WTVT 30 New Britain CT 1040 mi.
 KPTV 13 Laredo TX 880 mi.
 WYIA 44 Scranton PA 900 mi.

More of his records in a later issue. Thanks for the reports and to all who attended the convention in Dunkirk. 73- Bob...

PHOTO-NEWS

Mike Reid
109 Arjay Cres.
North York, Ont. M2L 1G6
CANADA

This month: Some photos of tropo from Jim Pizzi of Lovington, NM and Ron Purdue of Byron, MN, a satellite photo from Jim and the antenna set-up of Steve West of Havertown, PA.



KDD Network, Tokyo, JAPAN
44,600 mi. sat. (Pizzi)



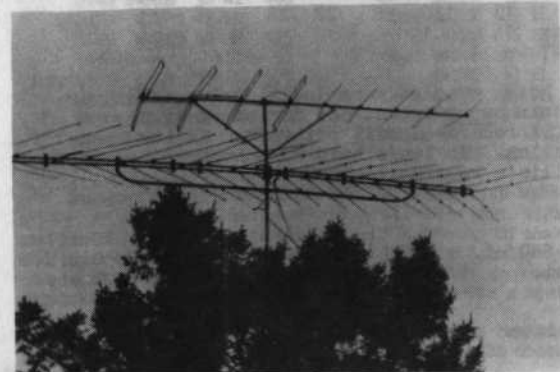
WRBT-33 Baton Rouge, LA
Mar. 2, 1983 743 mi. Tr
(Pizzi)



WIRT-13 Hibbing, MN
Aug. 3/82 231 mi. Tr (Purdue)



WAPT-16 Jackson, MS
772 mi. Tr (Pizzi)



And lastly, Steve's antennas: For VHF a Stereo Probe 9 and for UHF a JFD LPV 19 element log periodic 205" long all mounted on a 35' pine tree. Photo by Tom Yingling. (Were you paid, Tom?)

73's

Mike

EASTERN TV-DX

William J. Draeb
Ellis St. R.R.#2
Kewaunee, WI
54216

October 1983

Deadline: 1st

Steve Sprachman; 39-16 48th St., Sunnyside, NY 11104 EDT

This month's report brings an ending and a beginning. As you can see by my address I've moved. I've lived at this location on weekends in July and full time from August 13th on. Let me give you my report from my Seaford, NY location: Dates with tropo - July 12, 19, 26, 27, 29. Es - July 19, 24. Highlights: July 19 Es 1930; unids ch.3; Sudbury, ON mentioned. July 26 Tr 0700 U's from Boston to DC. July 27 Tr 1800 to 2200; U's from Boston to Norfolk. WFMZ -69 Allentown, PA (rare in Seaford). July 29 Tr 0645-0730 U's from Philadelphia, Baltimore and DC. WUUV-54 Baltimore (new).

Here in Sunnyside, I have an indoor VHF and UHF antennas that set on the window sills. It does not provide great DX. I get: WCBS-2, WNBC-4, WNEW-5, WABC-7, WOR-9, WPIX-11, WNET-13, WTXL-20 Waterbury (very poorly), WLIW-21 (also poor with ghosts), WNYE-25, WXTV-31, WNYC-31, WJTV-41, WJUN-47, WEDW-49 Bridgeport, CT, WJIM-50 Montclair, NJ, WCBS-2 xltr W53AA, WBY-54 Poughkeepsie (occasional), WNBC-4 xltr W57AA, WJNB-58 New Brunswick, NJ, W62AI (WVHT), W62--(WNJU), W64--(WNEW), W68--(WABC), WVHT-68 Newark (poor) and WPIX xltr W71--.

I did get what may be considered tropo on July 23 with WEDH-24, WVIT-30 and W59AA (WVIT) seen. There has not been anything spectacular yet (I don't know if I can expect anything spectacular). There is a UHF antenna on the roof from when the last tenants had Wometco Home Theatre. I am trying to figure out how I can use it. A Piece of the coax lead in hangs from the roof. My ch.59 mystery remains unsolved. It was on two weeks in a row on weekdays. Then it was off for two weeks; then it moved. I have not seen it here in Sunnyside. I was interested in Rick Turcsany's comments. Some one at ANARC suggested a pirate a pirate station. I some how doubt. It would not be wise for a pirate to be on 24 hours a day without any programming. It's not wise for a regular station to do this either. There is a translator licensed for ch.59 in Plainview, NY. I wrote to the owners of the xltr and WTVU-59. I have not received a reply from the translator people and the WTVU-59 in the latest TV Factbook is not valid.

Finally, in TV news, there was an article in the New York Times today. WKBS-48 in Philadelphia is being dismantled by the stations owners. The station was profitable, but due to feud in the Field's Company, the owners, they won't allow the station to be sold. So, they are just shutting down at the end of the month. The people of Philadelphia deserve better. Unfortunately, there is nothing they or the FCC can do. That's it for now. I hope the fall brings good DX.

Robert Goodman; 2030 Hering Ave., Bronx, NY 10461 EDT

June 1983	July 1983	July 1983
27 Es 2010 WEAR-3 FL 1050	5 Es 1900 WRBL-3 GA 850	19 Tr 0000 WBY-54 NY 60
2200 WEDU-3 FL "	1928 WEDU-3 FL 1050	24 Es 1853 WEDU-3 FL (muf, FM)
30 Tr 0455 WWLP-22 MA 110	1956 WSAV-3 GA 750	August 1983
0500 WCVB-5 MA 180		14 Es 1810 WPBT-2 FL 1100

Several other Es seen without ID's, usually with a low MUF. Times given for July 5 loggings are fairly arbitrary, with the three stations noted, plus probably some others, fighting it out at least from 1855 to 2110. 6/27 loggings made for interesting synchronicities. Some friends I hadn't seen in a while were in town, staying with my godmother across the street. Last I'd remembered, they lived in Pensacola. I went to mail a letter during the opening, passed my godmother, and talked to her grandchildren (friends' children). They said their parents were at the Yankees game, I told them, what a coincidence the Yanks-Orioles game was in by Es on WEAR from Pensacola. They said, not such a coincidence, because now they live in Tampa. So I got back from the mailbox to the dials, and of course WEDU came in. My friends moved, and so did the skip cloud! P.S.-How do you like being zoned out of your own column. (It has it's good points and it has it's bad points. I don't have to type up my own reports now but I have the inconvenience of the added expense of sending it to someone else to do it.-wd)(Also, since I operate a lot of CW, I use the backs of the reports I get as scratch paper.-wd)

Eastern TV-DX

October 1983

Bill Townshend; 4500 Conn. Ave. NW #901, Washington, DC 20008 EDT

August 1983

20 Tr 0905 WCNC-40 NJ; 0950 WHRO-15 VA (garden program).

Totals heard and/or seen now 27. WCNC had fair signal on 8/20 but good signal on 8/21. WHRO-15, good, then QSB'd out around 0955 on 8/20. WBOC-16 Salisbury, MD is now a pest as it is seen consistently in evening and early morning despite my poor locale for serious TV/FM DXing.

Saul Chernos; 79 Ridge Drive, Toronto, ON M4E 1B6

May 1983

23 Tr 1730 WCML-6 MI
27 Es 1100 WABG-6 MS
1300 KARK-4 AR
1301 KTVI-2 MO
Tr 2003 CI--6 ON
North Bay
(new to air TV Ontario station)
29 Es 1445 KWGN-2 CO
30 Ms 0635 KTVI-2 MO
Es 1945 WBRZ-2 LA
31 Es 2005 unids 2-4, S-SW.

June 1983

2 Es 1700 WPBT-2 FL
1718 WESH-2 FL
1730 WTVJ-4 FL
5 Es 1856 WPBT-2 FL
1916 WEDU-3 FL
2059 WWL-4 LA
2100 WBRZ-2 LA
Tr 2133 WDIV-4 MI
6 Es 2100 WESH-2 FL
WPBT-2 FL
7 Tr 0715 WICU-12 PA
WEWS-5 OH
8 Es 1700 WBRZ-2 LA
2130 KJAC-4 TX
13 Au 0720 WVMU-13 MI t
(PBS for sure + this very likely)
17 Tr 0105 WJKW-8 OH
0108 WKYC-3 OH
18 Es 1253 unid-2; SW with tp.
21 Es 2030 WESH-2 FL
2100 WPTV-5 FL
2111 WBRZ-2 LA
23 Es 1900 WPBT-2 FL
2245 to NNW; maybe Canada, brief.
26 Es 1100 WESH-2 FL
KTVY-4 OK
1126 KJRH-2 OK
1127 KAMR-4 TX
1400 KPRY-4 SD
1430 KNOP-2 NE
2015 KAVE-6 NM t
2130 KJAC-4 TX

June 1983

27 Es 2030 WESH-2 FL
2200 WBRZ-2 LA
2201 KDFW-4 TX
28 Es 2057 CKBW-2 SA
Melfort
2131 KOTA-3 SD
29 Es 2100 KJAC-4 TX
2217 WBRZ-2 LA

July 1983

1 Es 1235 CFSS-3 SA t
1240 unid-4; French
1255 KNDX-2 ND
1258 KXJB-4 ND
1300 KDLO-3 SD
1320 KOTA-3 SD
1400 CKTV-2 SA t
1525 TP ...kind of late, no? Ch.2 to W; 2Es?
2100 KJRH-2 OK
KARK-4 AR
3 Es 2300 KSNK-2 KS
Shreveport
4 Tr 2245 CBOT-9 ON
Ottawa
2246 CBOT-4 ON
2250 WNNY-7 NY
5 Es 2015 CKTV-2 SA
2017 WDAF-4 MO
Kansas City
2019 KSDK-5 MO
St. Louis
2115 WDIQ-2 AL
2116 WTVY-4 AL
11 Tr 1900 WKTV-2 NY
14 Es 1800 WDIQ-2 AL
WCIV-4 SC
19 Es 1845 CKOS-3 SA
(I thought they moved to ch.5-wd)
1858 CKTV-2 SA
1859 CKTV2-6 SA
Willow Bunch
CKND2-2 MB
Minnedosa
1900 CFCN-4 AT
Calgary
1926 KTIV-4 IA
1927 CKBI-5 SA
Prince Albert

July 1983

19 Es 1928 CKBI3-4 SA
Greenwater Lake
Plus, lots of unids I'll solve when up to date TV Canada list is obtained.
21 Es 1907 WBRZ-2 LA
1920 KATC-3 LA
Lafayette
2000 KJRH-2 OK
22 Tr 2225 WTVG-13 OH
Toledo
2229 WTOL-11 OH
23 Tr 0900 WWUP-10 MI
1000 WDEM-5 MI
24 Es 1400 WESH-2 FL
1409 WBRZ-2 LA
1410 KDFW-4 TX
1804 WJXT-4 FL
1855 WCIX-6 FL
1857 WCPX-6 FL
2258 KJAC-4 TX
2259 KPRC-2 TX
27 Es 1230 KTAI-6 LA
Shreveport
1700 KSNK-2 KS
28 Es 2000 CKND2-2 MB
29 Es 1915 KDFW-4 TX
1916 WESH-2 FL

August 1983

1 Es 1100 WEDU-3 FL
1101 WCBD-2 SC
1115 WESH-2 FL
1118 WUFT-5 FL
1207 WSB-2 GA
1303 KPRC-2 TX
1318 KJAC-4 TX
1325 WWL-4 LA
1330 WBRZ-2 LA
13 Tr 2200 CITY-57 ON
Toronto(ex-ch.79)
15 Es 0015 KTVY-4 OK
0020 KJRH-2 OK
0057 KARK-4 AR
1900 WPBT-2 FL
1901 WESH-2 FL

One reporter to Northern FM said he could send his next report on a postcard if Es didn't improve. Another reporter did just that. That sums up the Es season this year, possibly my last complete summer at Burnt River.

Eastern TV-DX

October 1983

Robert Grant; KD8EN, 5775 Bishop, Detroit, MI 48224

July 1983

1 Es 2000 KFDX-3 TX
3 Es 1900 KBTX-3 TX
2000 KIXT-5 TX
5 Es 2200 KLNE-3 NE
KSNW-3 KS
(I'll never get used to this new call sign. KARD was very catchy.)

July 1983

31 GW 1500 K66BV MI 6
Detroit
(SIN satellator)
August 1983
3 Es 1030 KTVS-3 CO

August 1983

17 Tr 0913 CITY-57 ON
Toronto (ex-ch.79)
20 Tr 1030 WKOW-27 WI
1100 WREX-13 IL
(Thanks, Alicia., hi.)

From Honor, MI:

July 1983

17 Tr 2300 WXMI-17 MI
Grand Rapids
CKOO2-2 ON
Warton
Es 1200 KFDX-3 TX
KJRH-2 OK
1300 WESH-2 FL
19 Es 1930 WGH-2 MA
WFSB-3 CT
Hartford
20 Es 0525 KWGN-2 CO
KOA-4 CO t
Tr 1900 WKOW-27 WI
Madison
KTMA-23 MN
Saint Paul
(Zenith STV)
WFBT-29 MN t
(20khz to WGTU)
KYIN-24 IA
(0 to WCGV)
1915 KWVL-7 IA
21 Tr 0115 WBBS-60 IL
Chicago
0129 WSNS-44 IL
Chicago
(Sine wave STV)

July 1983

21 Tr 0200 WCFC-38 IL
Chicago
WISH-8 IN
Indianapolis
WME-46 IN
South Bend
23 Es 1200 WSAV-3 GA
Savannah
1248 WESH-2 FL
24 Es 2200 KDFW-4 TX
2300 KMID-2 TX
2302 KAUZ-6 TX
Wichita Falls
2330 KAMR-4 TX
25 Es 0120 KBTX-3 TX
0200 KIII-3 TX
Tr 0835 WHRM-20 WI
Wausau
0841 WUCM-19 MI
Bay City
1700 WSNS-44 IL
WCFC-38 IL t
WBBS-60 IL t
WFBN-66 IL
Joliet(Chicago)
(Zenith STV)
27 Es 1300 WFMY-2 NC
Greensboro
1330 KJRH-2 OK
29 Es 1230 KATC-3 LA
1530 KPRC-2 TX
1533 KIII-3 TX

K66BV is the new Spanish International Network satellator tran-KOET-3 OK smitting from the top of the Renaissance Center in downtown De-KFDX-3 TX troit. Little else is known about it because they have no 1758 KAMR-4 TX local office of any kind (no phone #). I have heard 1800 KSNK-2 KS the I.D. many times in Morse Code. (Twice about 29 Es 1230 KATC-3 LA every 15 minutes). I don't know why they have K calls. 1530 KPRC-2 TX Maybe because of their satellator status or maybe the FCC 1533 KIII-3 TX decided to give all xitrs K calls to ease their workload? They did have a short spot on how to use LPTV's. (I know a little Spanish); this is what I could make out: "A loop antenna is not recommended, use RG-6 coaxial cable." Do they mean to say that RG-6 is better than twinlead at ch. 66? (No, they mean that for best overall reception RG-6 is better under varying weather conditions. When twin lead gets wet, its loss is very high, especially at ch.66-wd)

Paul Gaines; 15920 Puritan St., Detroit, MI 48227 EDT-EST?

I'm back-tracking the report I had sent you; lost in the black hole!

7/27/82 Es WKRK-5, WLBT-3, KATC-3, KLNE-3, KOTA-3, KYCU-5, KTVS-3; 7/28 Ms WNGE-2; 7/29 Ms WVAR-2; 8/1 Es KIII-3, KFDX-3, KBTX-3, KARD-3(now KSNW-wd), KENW-3, KENS-5; 8/2 Es TV Cubana-3, ICR Cuba-6, CKTV-2, CFSS-3; 8/4 WKPT-19; 8/5 WAND-17, WICD-15, WILL-12, WQRF-39, WVMU-13, WNEP-16, WICZ-40, WDAU-22, WENY-36, WEFB-28; 8/6 Tr Green Bay 2,11,26,38, WREX-13, WSAW-7, WISC-3, WSEJ-51, WNEB-17 xitrs 26,46,64; WFUM-28 full I.D. on ch.59, W39AA Ft.Wayne, WOAC-67 on ch.64; 8/7 Tr IL,WI, Es KWGN-2; Tr CELFT-32, WWUP-10, WLKY-32; 8/10 Ms KCKT-2(now KSNK-wd); 8/11 Es KLNE-3, KARD-3, KOTA-3, KTVS-3, KYCU-5; 8/16 Es KIII-3; 8/20 Es CKLI-1-3; 8/27 Es KATC-3, WVAR-3; 9/4 Ms WESH-2; 9/6 Tr WOAY-4 9/9 Tr WNPE-16, CELFT-32, WTAJ-10, WUAB-43 on ch.28, WWU-24(WNPB-wd), CELFT-15; CELFT-44, WNEP-16, WIXX-20, WUTR-20, WETM-18, WVIT-30, WICZ-40, WSKG-46,

Eastern TV-DX

Gaines; continued---

October 1983

9/9 Tr WTEH-10, WCDC-19 I.D. on chs. 29, 32, WCDC-19, W26AA(WNEB), WMGC-34, WENY-36, WETA-26, WSBK-38; WVTA-41, WNPI-18, WXXI-21, WUHF-31; 9/10 Tr Rochester 10, 21, 31, WJPE-16; 9/17 Tr WAPT-19, WVOL-15, WZTV-17, WNGE-2, Lexington 18, 27, 36, WLKY-32; 9/28 WAND-17; 9/29 CBFT-54; 10/1 Tr WTVQ-36, W46AB, WOAC-67 on ch. 64, W26AA, WFUM-28 on 32&59, WUTV-29 on 19, 33 & 60, CBFT-7(what ch? wd), W39AA, W64AK; 10/2 Tr WTAJ-10, WSNY-10(I.D. seen?-), WJAC-6, W0WK-13, WJZ-13, WNPB-24, WBOY-12, W64AK, W67AL(both WVIZ); 10/4 Tr TVO running on 33, 60; W58AM(WNEB), W65AH, W47AB, W17AA; 10/7 WEAO/WNEB xltr on ch. 55; 10/8 IL; 10/9 Tr CKCO-42; 10/10 Tr CKCO-42 on ch. 27; 10/28 WPOB-42; 10/29 WFUM on 32&59. 11/21 Tr WAND-17, WICD-15, WTIU-30, WEHW-55(now WRSP-wd), Peoria 19, 25, 47, WILL-12, WBAK-38, WTHI-10, WUST-16, WTVS-56, TVO on ch. 17; 11/22 Tr WAND-17, Peoria 19, 25, 31, 47; 11/30 Es CBHT-3, CJCH-5, CBIT-5; 12/4 WGNW-52; 12/6 Es WEAR-3; 12/8 Es KLINE-3, KTWS-3, KRMA-6, KOAA-5, KENW-3, KFDX-3; Tr WFSL-47; 12/10 CBFT-54 running double different French audio (P.M.); 2/13/83 WAND-17, KY, IN, WUSI-16; 2/14 Tr WJIN-9, IL, IN, W66AQ(WBFI-64), KY, TN, WKGB-53; 3/15 WAND-17.

May 1983

July 1983

July 1983

25 Es 1123 CBHT-3 NS 970 3 Es 2228 WABG-6 MS 715 Greenwood 24 Es 1140 WCIX-6 FL 1170 1141 WPTV-5 FL 1110 1145 WJIM-6 MI 600 1150 CFCL-6 ON 1080 1203 TV Cubana-3 1390 1204 WEDU-3 FL 1000 1205 CKRN-4 P 1050 1235 CKND-2-2 MB 1200 1305 KXJB-4 ND 1005 1307 KXJB-4 ND 1005 1309 KSTP-5 MN 800 1315 KBJR-6 MN 975 1355 WDAY-6 ND 1005 1720 KGFE-2 ND 1020 28 Es 2025 KGBT-4 TX 900 2035 KRGV-5 TX " 2038 KPRC-2 TX 675 2044 XHD-4 TAM 1110 2046 XHRIO-2 TAM 1000 2207 CKGN-2-2 ON 975 29 Tr 0805 WALA-10 AL 385 0825 WENG-42 AL 145 0827 WOTO-21 AL " 0828 WVTM-13 AL " 0829 WTOK-11 MS 289 Es 1034 TR-4 Cuba 900 1100 KTCA-2 MN 800 1105 WBAV-2 WI 673 1107 CKCY-2 ON 800 1126 KWGN-2 CO 1050 1420 KNOP-2 NE 1000 1450 KSNK-2 KS 800 1505 KSNB-4 NE 950 1518 KYCU-5 WY 1110 1520 KDUH-4 NE 1120 1535 KWNB-6 NE 1000 1541 KOA-4 CO 1050 1557 KOAA-5 CO 980 1623 KTWO-2 WY 1250 1855 CBFT-2 P 930 1902 KUSD-2 SD 950 1917 KPRY-4 SD 1110 1925 KIVV-5 SD 1175 30 Es 1525 KRID-2 TX 950 1540 KDIX-2 ND 1250 1545 KUSD-2 SD 950 1547 KTTV-4 IA " 1759 KNOL-4 TX 865 1815 KENS-5 TX "

Thanks for your long & short of Es. I don't guess I'll get that mileage, but I will keep trying. I usually get 6 new ones via Es every year but I don't think I will this year. Good short trips this summer. Pirate TV ch. 55. I wish someone in OH could I.D. it. Like xltr, comes in here 10 degrees west of where I get Akron. Three of us here saw it the first time; Mike De Wan, "Gen. Grant" and me. It went off air about 2230. I went on the phone to Mike. He said, "My God, they just went off." Since then I have seen it a lot. They usually go off air 2308-2315(bedtime?). Wrote ch. 45 & 49 (office; Kent, OH) chief engineer. They don't have anything on that ch., just 58(Youngstown-wd). I have seen the 45, 49 I.D. at 2300 on ch. 55 many times, it's their programming. Sent mail about this to Bill Fahber and 45/49 card to Tom Yingling, Jr. This Angola, IN station is really weak here(here too-wd). Have to get it on a trop. This K66BV is on the Renaissance Bldg., downtown. When they first got on air they were running the video with a T.P./tone. Well, not everyone can understand Spanish. Yes Bill, we have SIN in Detroit now.

George Rogers; 320 Lafayette RD., Chickamauga, GA 30707 EDT

July 1983

July 1983

July 1983

26 Es 1011 WLBZ-2 ME 1080 2048 KTTV-4 IA 950 2050 KUSD-2 SD 950 26 Es 2055 KDLT-5 SD 975 2058 KNOP-2 NE 1000 2109 KDUH-4 NE 1120 2120 26 Es KYCU-5 WY 1110 2130 Es AWGN-2 CO 1050 26 Es 2131 KOA-4 CO "

Eastern TV-DX

Rogers; continued---

October 1983

July 1983

July 1983

August 1983

27 Es 1025 CBFT-2 P 930 1030 WKTU-2 NY 670 1032 WSTM-3 NY 680 1034 CLOT-4 ON 900 1038 K-TV-2 MD 675 1039 KUSD-2 SD 950 1044 KDIX-2 ND 1250 1045 KPRY-4 SD 1110 1046 KTTV-4 IA 950 1108 KDLT-5 SD 975 1110 KOE-4 MN 1150 1115 CHNB-4 ON 1000 1120 WFRV-5 WI 673 1123 KPRP-2 ON 1100 1124 CBFT-5 ON 750 1125 WTOP-4 MI 775 1126 CKCO-2-2 ON 800 1135 CIGI-5 ON 960 1150 WJIM-6 MI 600 1205 CFCL-6 ON 1080 1235 CKRN-4 P 1050 1305 CKND-2-2 MB 1200 1307 KXJB-4 ND 1005 1309 KSTP-5 MN 800 1315 KBJR-6 MN 975 1355 WDAY-6 ND 1005 1720 KGFE-2 ND 1020 28 Es 2025 KGBT-4 TX 900 2035 KRGV-5 TX " 2038 KPRC-2 TX 675 2044 XHD-4 TAM 1110 2046 XHRIO-2 TAM 1000 2207 CKGN-2-2 ON 975 29 Tr 0805 WALA-10 AL 385 0825 WENG-42 AL 145 0827 WOTO-21 AL " 0828 WVTM-13 AL " 0829 WTOK-11 MS 289 Es 1034 TR-4 Cuba 900 1100 KTCA-2 MN 800 1105 WBAV-2 WI 673 1107 CKCY-2 ON 800 1126 KWGN-2 CO 1050 1420 KNOP-2 NE 1000 1450 KSNK-2 KS 800 1505 KSNB-4 NE 950 1518 KYCU-5 WY 1110 1520 KDUH-4 NE 1120 1535 KWNB-6 NE 1000 1541 KOA-4 CO 1050 1557 KOAA-5 CO 980 1623 KTWO-2 WY 1250 1855 CBFT-2 P 930 1902 KUSD-2 SD 950 1917 KPRY-4 SD 1110 1925 KIVV-5 SD 1175 30 Es 1525 KRID-2 TX 950 1540 KDIX-2 ND 1250 1545 KUSD-2 SD 950 1547 KTTV-4 IA " 1759 KNOL-4 TX 865 1815 KENS-5 TX "

From Radcliff, KY;

8/20 Tr 0932 WBAK-38 IN 150, 0935 WTHI-10 IN 150, 0945 WEHT-25 IN 112, 0947 WOSU-34 OH 210, 0950 WTUC-26 OH 183, 1000 WWTU-9 MI 460, 1005 WFYI-20 IN 114, 1007 WTHR-13 IN 114, 1008 WCEE-13 IL 185, 1010 WREX-13 IL 281, 1015 WGN-9 IL 295, 1020 WISH-8 IN 114. Top Es stations: KMLD-2, 36 times, to, WLBZ-2, 19 times

A late report from Seybold will have to wait until next month.-wd.

C.C.I. [UNIDENTIFIED DX]

Robert Grant, KD8EN
5775 Bishop
Detroit, MI 48224
October, 1983.

TV unIDs:

Bill Fahber, 336 Atlantic St., Bridgeton, NJ 08302.
1983: Thu 26 May Es ch 5 2200 EDT-- "Star Trek" to 2300. Reference to US1 of Route 95 during a commercial. (PTA: OK,KS,MO,AR.)
Fri 3 Jun Es ch 2 1730 EDT-- "Peoples Court" to 1800. (PTA: TX,OK,KS,NE,SD,ND.)
Sat 4 Jun Es ch 2 1120 EDT-- CBS Station, promo for Fred McLeod, Eyewitness News. (Definitely WJBK. Notice that in my DX report that I had short Es from E. & W. at the same time. -RG)
Tue 14 Jun Es ch 2 1943 EDT-- "Muppet Show" (PTA: S)
Wed 15 Jun Es ch 3 1300 EDT-- Cuba. See drawing 1.
Tue 28 Jun Es ch 3 1558 EDT-- Warner Bros. Cartoons (Bugs Bunny, Daffy Duck, Foghorn Leghorn, Road Runner, etc.) \emptyset offset.
" " " " ch 4 1530 EDT-- "Fantasy" (regular NBC CDT/EDT sked. Can't ID this one. -RG)
" " " " ch 2 2030 EDT-- // to CJCB-5 Halifax. (most likely CKCK. -RG)
" " " " ch 5 2030 EDT-- // to both of above. (this one puzzles me. LP repeater??-RG)
Sun 3 Jul Es ch 6 2000 EDT-- TX Rangers/Milwaukee Brewers bb. (// to KXAS-5.)
" " " " ch 2 2057 EDT-- "Cosmo" to 2100, mention Star City High School, "Masterpiece Theatre" (a PBS.)

Eric Fader, 23-35 Bell Blvd., Bayside, NY 11360.
1982: Mon 7 Jun Es ch 3 1829 EDT-- mention "Breakout from detention center" rx woman named Denise. (PTA: TX,LA,AR,MO,IA,WI.)
Tue 15 Jun Es ch 6 1930 EDT-- promo for "Donahue" at 9am, begin "You Asked For It" (PTA: KS,NE,IA,MN.)
1983: Fri 27 May Es ch 3 1230 EDT-- large "Good Day" across screen. Name of pgm? (PTA: MN,WI,MO,NE not KIMF.) (could be a PBS with a Children's reading show like "Electric Co." -RG)
Sun 3 Jul Es ch 6 2021 EDT-- TX Rangers bb (PTA: TX.) (note Bill Fahber's report for this same date. .hi. -RG)
Thu 14 Jul Es ch 6 1900 EDT-- end "Sesame Street", play 2 min. of inst. mx., begin "Reading Rainbow" (PTA: SW)
" " " " ch 3 1908 EDT-- ad for "Cherry Orchard Furniture Store" (PTA: LA,MS,TN,MO,NE.)
" " " " ch 6 1931 EDT-- news pgm with "Jim" and "Roland"

Thomas J Yingling, Jr., 221 Pinewood Rd., Baltimore, MD 21222.
1983: Wed 8 Jun Es ch 5 1700 EDT-- "Adam-12"
Mon 27 Jun Es ch 4 1700 EDT-- "Yogi & Friends" cartoon show.
" " " " ch 4 1800 EDT-- Action 4 News, w/ "4" in circle. (sounds like WDAF. or WTAE by tropo. -RG)
Sat 9 Jul Es ch 3 1937 EDT-- "Doctor Who" PBS? (Most likely. -RG)

Jim Pizzi, P.O. Box 1778, Lovington, NM 88260.
1983: Fri 29 Jul Es ch 5 2137 MDT-- "Barney Miller" (PTA: TN,OH,MI.)
Ronald Purdue, Route #1 Box 224, Byron, MN 55920.
1983: Sat 4 Jun Es ch 2 1133 CDT-- "All Star Wrestling" (PTA: SSW)
Fri 10 Jun Es ch 3 1928 CDT-- "Quincy" (PTA: NNW)
Tue 5 Jul Es ch 4 1856 CDT-- "Family Feud" (PTA: E)
Fri 8 Jul Es ch 3 1535 CDT-- "Richard Simmons Show" (PTA: ID or MF)
Mon 18 Jul Es ch 2 1654 CDT-- "CHiPs" (PTA: W)

Robert Grant, KD8EN, 5775 Bishop, Detroit, MI 48224, editor. (From Detroit:)
1983: Sun 3 Jul Es ch 4 1900 EDT-- TX Rangers bb, \emptyset offset (PTA: TX)
(From Honor, MI:)
Mon 25 Jul Tr ch 55 1710 EDT-- "700 Club"

FM unIDs:
Thomas J. Yingling Jr., 221 Pinewood Road, Baltimore, MD 21222.
1983: Wed 8 Jun Es 94.1 1800 EDT-- non-ID as "KQ-94" (write KQXY, then write KXKQ. -RG)
" " " " 98.3 1810 EDT-- non-ID as "FM-G-98"
Thu 14 Jul Es 96.5 1743 EDT-- non-ID as "Country-96" suspect KRGI.
Sun 24 Jul Es 107.1 1715 EDT-- non-ID as "Love 107" (write KWLV, then write WLLV. -RG)

CCI- unidentified DX.

October, 1983.

FM unIDs:

Jim Pizzi, P.O. Box 1778, Lovington, NM 88260.
1983: Tue 5 Jul Es 96.5 1655 MDT-- "96-Rock" (PTA: NEast.)
Fri 8 Jul Es 97.5 0928 MDT-- ad mention "Riverdale" (PTA for 7/8 is IL,KY,VA,WV,TN,NC,AR)
" " " " 103.9 0933 MDT-- "J-103" rock.
" " " " 104.9 0937 MDT-- ad mention "Clinton"
" " " " 104.5 0943 MDT-- "Rock-105"
" " " " 103.9 1007 MDT-- "New Magic"
Mon 11 Jul Es 91.5 1700 MDT-- "Keep in touch with us on 92.7, 95.7 & 91.5" followed by BSC news. Female ancr. w/out accent. USA? (PTA: Caribbean. Jamaica FM's in.) (I doubt that it could be USA because 91.5 is an EFM channel while I could find no listing for EFM stations on either 92.7 or 95.7. More likely Jamaica or British Virgin Islands, or a pirate. -RG)
" " " " 103.1 1944 MDT-- mention Macinac Island. (PTA: WI,MI) (This Island is near where the Lower Peninsula and Upper Peninsula almost meet. WGMM is the closest 103.1 to it but it is not in WGMM's range. -RG)
Thu 14 Jul Es 98.3 1836 MDT-- ad mention "OTUM" (PTA: GA, AL, MS, NC, SC.)
Sun 17 Jul Es 99.7 2046 MDT-- "Magic-100" (PTA: TN,GA,NC.)
Sun 24 Jul Es 102.7 2151 MDT-- "The Hot One" (PTA: OH,IN,MI.)

Ronald Purdue, Route #1, Box 224, Byron, MN 55920.
1983: Wed 8 Jun Es 101.9 1717 CDT-- ad on rock concert. (PTA: SE)
Thu 14 Jul Es 107.7 1929 CDT-- Foreign Language pgm. (PTA: ESE)
Mon 18 Jul Es 94.1 2054 CDT-- SS MoR. (PTA: SSW) (I think this is KESS, Fort Worth, TX which moved to 94.1 from 93.9. This one caught me by surprise during an Es opening too. -RG)

Steve West, 432 Kenmore Rd., Havertown, PA 19083.
1983: Sun 24 Jul Es 98.5 2115 EDT-- SS male ancr. Followed by 3 SS vocal songs. Not KHYS but in that area. (Steve asks if KQXX is SS.)

Robert Grant, KD8EN, 5775 Bishop, Detroit, MI 48224, editor.
1983: Sun 3 Jul Es 92.1 2021 EDT-- Houston Astros bb., no stereo pilot. (PTA:TX)
" " " " 93.3 2042 EDT-- ID heard clearly: "Kicker Country- K-C-K-R". According to directory assistance "kicker" in Port Arthur is still KYKR.

TV IDs:

Jim Pizzi:
Sat 4 Jun Es ch 4 2031 MDT-- mention Duquesne, Squirrel Hill. (Robert Goodman says this is almost surely WTAE given those areas. -RG)



* This Es season was characterized by short duration openings
* with high MUFs meaning many FM and ch5/6 unIDs. Unlike past
* Es seasons, the best openings were not spaced slightly less
* than a month apart. Probably due to many occurrences of aurora
* this summer covering over the Es season's normal pattern.
* 73 & gud DX, TX to all reporters and readers.



SUPPORT WTFDA