

From The STAFF

W.T.F.D.A. Headquarters, P.O. Box 514, Buffalo, NY 14205

MEET YOU AT NEW ORLEANS!...WTFDA Convention '85 is just a month away--and what a great location we have this year! Host Ron LeBlanc is planning a great time for everyone--and the agenda even includes a tour of the facilities of a shortwave broadcasting operation, WRNO. There will also be tours of local FM and TV stations, and operating TV and FM DX systems. Many longtime WTFDAers will be there, and you can be sure they'll bring along some DX tapes, photos, QSLs, and stories about their DXing experiences. Ron advises that attendees can bring DX gear to test, compare, or sell, too!

THERE'S SOMETHING FOR EVERYBODY...Since New Orleans is a world-class convention city, it's also a great place to bring the whole family. Everything from tours of the Superdome to a ride across the Mississippi on a cablecar is available, and the view of the area from the Lake Pontchartrain causeway on the way into New Orleans is fantastic. The famed French Quarter of the city is also a must for visitors, so there is plenty for non-DXers to do while the convention activities are going on.

REGISTER NOW!!!...Don't waste time. If you're going to the WTFDA convention, host Ron LeBlanc wants to hear from you as soon as possible. The sooner you contact Ron, the faster arrangements for accommodation and transportation can be made. Those arriving via New Orleans International Airport should make note of arrival time and airline, so a ride can be arranged. Send in your registration form (inserted in this month's issue) along with the \$20 fee to Ron at the address on page 16.

E-SKIP SEASON ROLLING ALONG...As usual, the E-skip season is getting mixed reviews, but much depends upon your geographic location. There have been quite a number of small openings in June, mostly short lived. Right about the time this is being prepared, the summer's best activity takes place, so it may still be a bit too early to analyze conditions. We'll soon be into what usually proves to be a great period for BOTH E-skip and tropospheric ducting: early July. Keep a close check on conditions, and be watching the next couple of issues for results.

MEMBER RESPONSE INCREASING...Our request for more equipment reviews has paid off. One of the first to help out was Rich Wertman, who submitted features that are being typed up now. A big thanks to Rich, and to those of you who wrote with ideas. Keep it up, and lets hear from more members with ideas for articles--your ideas are what the VHF-UHF DIGEST is all about!

TELEVISION NEWS: Reader input & Canadian notes.....	3
WESTERN TV-DX: Es loggings dominate July's column.....	7
PHOTO NEWS: Some ch 2 E-skip seen by Jim Pizzi.....	11
EASTERN TV DX: May 23 & 27 E-skip seen by many.....	12
COME TO NEW ORLEANS: Details of the August 2 - 4 WTFDA Convention.....	16
SOUTHERN FM-DX: 1980's DX season: the best ever?.....	18
FM STATISTICS: Pat Dyer reports his "personal best".....	21
FCC FM NEWS: It's back to Minnesota, where tropo is better.....	23
IN SEARCH OF A METEOR SCATTER BEACON: Monitoring for peak MS.....	28

TELEVISION NEWS

Bill Fahber, editor
336 Atlantic Street
Brignton, NJ, 08302

This month's column will be slightly different from the usual format. Because of a combination of new working hours and the summer schedule of the library where most of the research is done, there was no chance of doing the usual research, outside of the Federal Register. So that information will have to wait until next month, when the summer semester's library schedule goes into effect. Meanwhile, as promised, technical data for new television stations listed in the past few months.

NEW STATIONS ON THE AIR

- ND Bismarck; KBMY, ch. 17-; 510 kw max ERP; 948' AAT/649' AG/2869' ASL; coordinates 46°35'11"/100°48'20"; TL 2 miles south & 4 miles east of St. Anthony (close to the WDAY-TV ch.12 tower); address: WDAY Inc., Russell Building, N. State Street, Bismarck, ND, 58502. Satellite of WDAY-TV, ch. 6 in Fargo, ND, an ABC affiliate. How will this affect KXMB-TV, ch. 12, which is a satellite of KXMB-TV in Minot, which has secondary ABC affiliation?
- PA Scranton; WOLF-TV, ch. 38; 97.5 kw Max ERP; 1261' AAT/352' AG/2412' ASL; coordinates 41°26'09"/75°43'45"; TL West Mountain Road, Ransom, PA (about 1 mile NE of WDAU-TV, ch. 22); Independent station, went on the air around the beginning of June, 1985. Very weak signal; Tom Yingling and I both noticed severe fading when it does come in. I also noticed that the picture has to be pretty discernible before the signal strength is good enough to make out the audio. Maybe because the audio is only 10% of the video ERP. Could this be the wave of the future?
- PR Fajardo; WMTJ, ch. 40z; 96.38 kw Max. ERP; 2754' AAT/205' AG/3434' ASL; coordinates 18°18'36"/65°47'41".
- MI Flint; WSMH, ch. 66-; 1170 kw max; 943' AAT/967' AG/1577' ASL; coordinates 43°13'18"/84°03'14"; TL 7114 Gary Road, Flint, MI, 48503. Address: Flint Broadcasting Limited Partnership, G-2288 South Ballinger Hwy, Flint, MI, 48503.
- TX Waco; KXXV, ch. 25+; signed on 3/22/85; 5000 kw ERP; 1828' AAT/1732' AG/2532' ASL; coordinates 31°20'15"/97°18'36.9"; TL 3.1 miles northeast of Moody; address: Central Texas Broadcasting Company, 1909 S. New Road, Waco, TX, 76711. (Jim Pizzi's DX report in last month's VUD mentioned it as an NBC affiliate)
- IL Quincy; WQEG, ch. 27+; signed on 3/9/85; 14.8 kw max; 567' AAT/495' AG/1205' ASL; address: West Central Illinois Educational Telecommunications Corp., Box 6151, Springfield, IL, 62708. Educational station, obviously.

- MS WDBD, ch. 40+, Jackson; signed on 12/27/84; 1040 kw max; 1210' AAT/1078' AG/1522' ASL; coordinates 32°16'53"/90°17'41"; TL about 1.8 miles southwest of intersection of Highways # 18 and 20; address: Jackson Family Television Inc., Box 10888, Jackson, MS, 39209.
- MI Saginaw; WAQP, ch. 49-; signed on 3/26/85; 1000 kw max/833.68 kw hor; 1023' AAT/1049' AG/? ASL; address: Tri-State Christian TV, Box 1198, Saginaw, MI, 48606.
- NY Riverhead (Long Island); WLIG, ch. 55+; 5000 kw max; 670' AAT/679' AG/764' ASL; coordinates 40°53'50"/72°54'58"; TL north of Middle County Road, near Ridge, NY. Address: WLIG-TV, Wading River Hollow Road, Ridge, NY, 11961. Independent station featuring rather old syndicated programs and movies, with emphasis on Long Island news and public events.
- NC Fayetteville; WCFT, ch. 62z, signed on 3/4/1985; 223.9 kw max; 903' AAT/900' AG/1108' ASL; coordinates 34°55'11"/79°03'22"; TL 0.2 mile WSW of intersection of State Routes 1711 and 1712, Parkton, NC; address: Fayetteville-Cumberland Telecasters, Drawer 62, Lumber Bridge, NC, 28357.
- KY Madisonville; WLCN, ch. 19-. According to comment by Jeff Kadet in last month's VUD, this station had been on the air since last June. Which could very well be. I wasn't aware of it myself until I saw it in a recent Television Digest update, which was probably too embarrassed to list a sign of date of almost a year ago. 1143 kw max/953 kw hor; 1194' AAT/1057' AG/1667' ASL; coordinates 37°17'02"/87°33'42"; TL 1 mile SE of Kentucky Hwy 70, 0.55 mile northeast of Sugar Creek, near Madisonville; address: Life Anew Ministries, 721 Princeton, Madisonville, KY, 42431.
- CO Colorado Springs; KXRM-TV, ch. 21z, signed on 1/21/85; 1054 kw max; 2085' AAT/125' AG/9485' ASL; coordinates 38°44'40"/104°51'37"; TL Building #39, Cheyenne Mountain. Address: Light Communications Inc., 5050 Edison, Suite 221, Colorado Springs, CO, 80915.

CONSOLIDATED HEARINGS

- NJ Vineland; ch. 59; Rita Wise; Family Television Network.
- MIN Minneapolis; ch. 45; Vision Broadcasting Corporation; Jean Turner Goins; Metro Program Network.
- TX Fort Worth; ch. 52; Dave Reese; Alden Television Inc.; Rebecca Rangel Henton; Texas Spanish Broadcasters; Fort Worth Television Inc.; Channel 52 Fort Worth Television Ltd., a Limited Partnership; Nuevo Mundo Broadcasting Inc.; Benjamin T. Perry III; Carter Broadcasting Partnership; EAM Broadcasting Company of Fort Worth; Channel 52 Limited Partnership.
- TX Odessa; ch. 42; Alfred H. Roever III; Garcia Communications.

KS Pittsburg; ch. 14; Family Broadcasting Co., Inc.; John H. Leland.
TX San Antonio; ch. 60; Vela Broadcasting Company; San Antonio Video Corporation; TV 60 Limited Partnership; Amistad Communications of the Southwest; Fiesta Communications Ltd.; Thomas TV Associates; Spanish American Broadcasting Inc.; Pro 60 Communications Inc. San Antonio Broadcasting Inc.; Neuva Vista Productions (sic); Salinas-Oatman Corp; Hispanic Broadcasters of San Antonio Inc.; Televista Corporation.

CHANGES IN THE TABLE OF CHANNEL ASSIGNMENTS
AL Opelika: add 50z
GA Dalton: add 23z (site restriction 6.1 miles west of Dalton.)

FORUM

I found this in the 6/10/85 Camden (NJ) Courier Post. It starts out discussing WRBV, channel 65 in Vineland, NJ, wherever that is. "The station, which was recently converted from a pay-TV format to a free service by its new owners, Press Broadcasting Co. of Asbury Park, is expected to announce a full programming schedule that may very well put Ch. 65 in direct competition with the Delaware Valley's other two independent UHFers, Channels 17 and 29." "...the programming undertaken by Channel 65 will reflect 'extensive research on the public's perception of TV in the Delaware Valley.' Currently, Channel 65's programming is comprised almost entirely of music videos supplied by the Odyssey network." "The entry into the local broadcasting sweepstakes by Channel 65, one of the two commercial stations currently in operation in South Hersey...will mark the beginning of what should become a regional television boom in the next few years. Beside Channel 65, the FCC has assigned another license for Vineland on Channel 59." "What? They've gone beyond mistaking construction permits for licenses. Now they stoop so low as to mistake a vacant television channel being contested by two applicants under a consolidated hearing, a license? "In addition, the short-lived Channel 53 in Atlantic City is expected to be switched back on in the near future, and Channel 62 has also been licensed for Casino City." "What do these guys use for drivers licenses? Blank automobile registration forms? "Also in the works is Channel 61 in Wilmington, Del., which is expected to locate its transmitter in Salem County and serve the southern reaches of the Garden State. Finally, Grant Broadcasting of Miami is getting ready to turn Philly's PRISM (STV-wbf) outlet, Channel 57, into a full-time free, independent station. Channel 57 will hit the airwaves this fall, and it has already scored a major coup by cutting a deal with the Villanova University to air the NCAA champ's basketball games." "Lest that last sentence mislead you, Channel 57 (WWSG) has been on the air for some time.
Personal observations: Maryland Public Televisions and their translators are now equipped with stereo. WHHT, ch. 68 in New York and WSNL, ch. 67 in Smithtown, NY, both until now STV stations (Wometco Home Theatre), are now broadcasting video music, at least in

the evening, in stereo.
Nate Ely sent an article from the Wisconsin State Journal about the efforts in the broadcasting industry to block video cassette recorders from recording commercial programs. Because viewers can speed up a tape when the commercials come on, the advertisers lose out on the opportunity to pester you with the usual set of lies, half-truths and misleading statements about their products. Now does that seem fair? They use your hard earned grocery money to provide the finest in programming, and you don't even watch their commercials. But now, through the genius of Andrew Lippman of MIT, we have unrecordable video. Unrecordable video operates with varying scan rates. It runs slightly slower, then occasionally slightly faster. This doesn't bother the television set, but it sure bothers a VCR, which requires exactly 30 frames per second. Eventually they will build VCRs with the ability to record unrecordable video at a higher price, but by then the broadcasters will have another method of rendering video unrecordable. So why bother? By the way, I think NBC may be experimenting with unrecordable video already. I tried recording the A-Team the other day, and when I played it back, all I could get was a jumbled mess on garbled nonsense. Nate adds, "I wonder if local stations will be willing to 'fool around' with their TV signal and risk losing more distant viewers." My impression of television stations is that they don't really care about distant viewers. It doesn't sound to me as if the slight change in scanning rate would affect weak signals.

Bruce Elving sent a clipping from the 5/5 Charlotte (NC) Observer about WSOC-TV, ch. 9. It now has stereo facilities, and is broadcasting synthesized stereo, taking amono signal and artificially splitting it into stereo. WBTV, ch. 3 in Charlotte, is also using synthesized stereo.

John Ebeling reports that WTCN-TV, ch. 11 in Minneapolis, MN, will be changing its call letters to WUSA. The station is owned by Gannett Publishing, who publishes USA Today. He also sent an article from the 5/20 Minneapolis Star & Tribune. It gives a negative view toward the idea of noncommercial VHF stations selling their channels in exchange for huge sums of money. "...it begins to look about as nice as selling your grandmother to raise a little gas money for the Oldsmobile." Evidently WEDU, ch. 3 in Tampa, is swapping channels with WTOG, channel 44, for \$40 million. At the annual meeting of PBS stations in San Francisco, the general feeling was opposed to the FCC's proposal to allow commercial stations to swap with noncommercial VHF stations. But no official stand was taken, since it was felt that individual stations should have the freedom to choose.

George Mileon says that WJTV, ch. 66 in Framingham, MA, is at full power, but the picture in the Boston area is not that great. (What did you expect from punk rock?) They are on 20 hours a day, not 24. WSTG-64 in Providence, RI, has gained more advertisers. WSMW-27, Worcester, MA, has cut down on its

scrambled broadcasting and reduced its monthly fee to \$4.00.

During a skip opening Bill Draeb logged KOUS-TV, ch. 4 in Hardin, MT, which carried a dual station ID with KYUS, ch. 3 in Miles City, and asked if KYUS is a satellite of KOUS. Not that I know of. They are both NBC, but are separately owned and have different advertising representatives. The 1984 Broadcasting Yearbook doesn't say anything, and the list of satellite stations in the Spot TV book doesn't include them. Anybody else know anything about them?

Bill also wrote, "WSOC-14 (Suring, WI -wbf) is still on but their outlook as far as continuing on the air doesn't look too good. Since their last fund raiser...they had to cut one of their two paid employees from the staff...The remainder of help are volunteers who run the station." "Since their last fund raiser they had to drop their Saturday morning programming...because of insufficient funds to operate the xmtr. All programs they air are provided to them free of charge. Some are provided by WVCY-30." By the way, did you or Nate ever find anything more about those Iron Mountain translators?

As of 5/9/85, Eric Fader in Bayside, NY, has yet to log WLIG, ch. 55 in Riverhead, NY. (Tom Yingling and I got it in on a few occasions. But then again television signals in this area can travel good distances along the coast.)

Bill Hollman spoke with one of the higher-ups at WLCT, ch. 26 in New London, CT. The station plans to go on the air around September, 1985, with 3.8 million watts. He also read in a paper about WEDN, ch. 53 in Norwich, CT, installing a 30' antenna atop their 500' tower. (But is that for their station or for some other service sharing the same tower?)

Ed Shepherd confirms what I suspected. WGGT, ch. 48 in Greensboro is independent, but it carries the CBS morning news instead of WPMY, the local CBS affiliate on channel 2. Two more stereo stations are WSOC, ch. 9 in Charlotte, NC and WXII, ch. 12 in Winston-Salem. WPTT-TV, ch. 28 in Durham, NC, has been experimenting with stereo, and might have gone to stereo by now. WTVI, ch. 42 in Charlotte, NC, is off the air temporarily, and was supposed to return in mid-June. Ed writes, "No one ever seems to DX WIKY-14 in Hickory, NC. Don't know the power but some one besides me must pick it up. Any response on this question from other DXers?" I imagine that with 656 kw JRP and 600' AAT, the suburbanites there probably consider it DX.

Just in from John Combs. WJBR, ch. 33 in Pensacola, FL, is on the air, and part of the Christian Television Network (CTN), which also includes WTGL-52, WSNB-66, WOLF-22. WSCV, ch. 51 in Fort Lauderdale, apparently is now licensed to Miami and identifying as Miami. Can anybody confirm that? John says that I ran his previous letter twice, in two different columns. I probably filed it away instead of discarding it after I was finished with it. I'll make sure that doesn't happen again. But one correction he does make: He did not say that Gainesville residents cannot receive

W69AY. People 30 miles away from Gainesville have complained that they can't receive it on a loop antenna. Despite reports that WSAV-TV (ch. 3 in Savannah) and WJCL (22) have switched networks, he says that WJCL is still NBC. Maybe the change is planned for a future date when their contract runs out.

W.R. McIntosh writes that KTBN-TV, ch. 40, is now identifying as Santa Ana-Los Angeles. Active KTBN translators include K53AB, Inyokern; K53AT, Buellton-Solvang; K550C, Thousand Oaks; K55CN, Bakersfield; K60BB, Desert Hot Springs; K62AN, Lancaster; K64AT, Victorville; K65BT, Santa Barbara; K65BP, Arvin-Lamont; K65BM, Palm Springs; and K65CJ, Santa Maria.

Mc also sent in a few rather interesting articles. One, in the 5/16 Los Angeles Times, has details about a new Mexican television network. One thing that has been almost totally lacking in this column is Mexican TV news. "The Mexican government this month will launch a new TV network aimed at the working and rural classes, with domestic programming designed to strengthen the national identity." "Government-owned Channel 7 will start its programming, soon to become 24 hours a day, at 7 a.m. Saturday through 99 repeater stations covering 72% of the nation's territory-bigger than any existing private TV network. The government first entered the TV field, in direct competition with the giant, privately owned Televisa, in the early 1970s when it bought a small bankrupt Mexico City station, Channel 13. It has since expanded that station into a national network with 44 repeater stations. Until now, a viewer in the Mexico City metropolitan area had the choice of six channels, four owned by Televisa, one cultural channel run by the main national university and Channel 13." "The government, sensitive about what kind of entertainment and information is offered to the people and how government actions are portrayed, appears to have felt there were not enough alternatives for the viewing public." "Channel 13's programming will be aimed at the upper and middle urban classes. ...the new Channel 7 will be aimed at 'the popular classes'-workers and peasants, representing about 70% of Mexico's 78 million people. The new network will have commercials but will carry no liquor or cigarette advertising and will accept only ads for 'necessary consumer goods and services.'" "...the programming will have a maximum of only 15% foreign content. Most of Televisa's popular evening shows come from the United States, from such series as 'Dallas' and 'Magnum P.I.', to specials such as the Miss America and Miss USA pageants." "...the new channel...will feature education programs during the day, entertainment at night and short news breaks every 30 minutes."

This next article, from the 5/17/85 Los Angeles Times, will start those 4th commercial network rumors flying again. "Tribune Co... has agreed to buy KTLA Channel 5 here for \$510 million cash, the highest price ever paid for a single TV station. The sale is expected to force Tribune Co. to sell its Van Nuys-based Daily News...and position the company as a new player in the race to build a national network

of independent television stations." "Founded by Paramount Pictures in 1947 as the first TV station west of the Mississippi, KTLA is considered the most profitable non-network television station in the country." "KTLA will make (Tribune) company the fourth-largest owner of television outlets in the country in terms of revenues, earnings and households reached—just behind the three commercial networks." "Perhaps more important, owning KTLA with its nine sound stages in Hollywood once owned by Warner Bros.—also puts Tribune Co. in a position to develop an ad hoc network of its own, linking it through Tribune-produced programming with other independent stations." "Only last week, Australian media magnate Rupert Murdoch and Denver oilman Marvin Davis announced their intention to buy six television stations from Metromedia...apparently with the hope of linking them into a fourth network, via programming from their 20th Century Fox studios. However, entertainment industry officials were skeptical...that Tribune Co. or Murdoch and Davis would be able to develop a network that would offer original programming throughout the day or link enough stations to reach every major market in the country." "...a limited network, supplying programming on a part time basis, could be successful. Analysts predict that as companies with the resources and programming capability of Fox or Tribune Co. enter the fray, original programming of a much higher quality and in much greater quantities could become available for independent stations."

Mc also sent a list of stations and cable services covered in the Los Angeles Times TV listings: "25 commercial stations" (five of which are PBS) and 20 Cable services. It claims to be "the most comprehensive TV listings in the country." Let's see in anybody can find one better. The list includes Los Angeles, Orange County, and San Diego. At least somebody is wising up to the fact that noncommercial stations are in fact just another type of commercial station.

Ralph Strobel sent in two articles about WPDS-TV, ch. 59 in Indianapolis, Indiana. The articles were from the Indianapolis Star and Muncie Evening Press for 5/25/85. A group called Decency in Broadcasting filed a complaint with the FCC against WPDS for violating FCC regulations on broadcasting of sex and violence. Specifically, the Radio Communications Act of 1934, which prohibits the broadcast of "obscene, indecent or profane" material. The group is asking the FCC to revoke the station's license and stop it from broadcasting nude scenes and offensive sexual conduct. The station has been broadcasting adult movies in the evenings and Sunday afternoons. A lawyer for the station says that the reference in the Communications Act refers only to obscene, indecent or profane language, not visual images. He also cited a Supreme Court decision that nudity and sexual conduct are permissible as long as the ultimate sexual act is not shown.

The court had also ruled that a community standard must be established, by which a sta-

tion can be judged for indecency. Decency in Broadcasting is attempting to discern exactly what that community's standard is. The group had already convinced WRTV, ch. 4, to stop showing R-rated movies, and, according to Ralph, threatened WFBQ (FM) with court action for using a vulgar ID slogan. The station dropped the slogan.

Larry Fuss responded to some of the missing and incorrect information in the 5/85 column. Under APPLICATIONS DISMISSED, Cookeville, TN should have been listed as a construction permit cancelled, on channel 55. (55 would be Crossville, TN, not Cookeville. I have record of a CP for WINT-TV which had been cancelled, but no record of Joseph Williams being connected with it. I still wonder if we are talking about something else. Did Williams apply for a CP in contest with the renewal of WKWR's CP for channel 28? WKWR is taking too long to get on the air.) Larry does state that another application for ch. 55 was filed by Gerald R. Roberts (900 kw; 721' AAT), I suspect for Crossville, not Cookeville. Under CONSTRUCTION PERMITS GRANTED, Honolulu ch. 5 is 100 kw at 71' AAT. FACILITIES CHANGES GRANTED: WUNG-TV, Concord, NC, is ch. 58. The ch. 43 assignment listed in the next column is for Wiggins, MS, not Wiggling. The Manteo, NC allocation should be 4z, not 34z. That makes sense, as it is 190 miles from Chapel Hill's WUNC on the same channel.

Bob Timmerman reports that W39AA in Fort Wayne, IN, is now repeating WFIY-20 in Indianapolis instead of WBGU. WFIY is more Indiana-oriented. He also sent a clipping from the 6/4/75 local newspaper about WBKZ, ch. 63 in Angola, IN. The station, not yet on the air, is being purchased by Calvary Temple, a church in Fort Wayne. They plan about 2/3 Christian programming and 1/3 family-oriented programs. The sale of the station still has to be approved by the FCC, and the tower still has to be built, hopefully somewhere between Auburn and Waterloo. They hope to have the station on the air within the next year.

CANADIAN NOTES FROM WALTER PATTON
CALL LETTERS

32 CIVK-TV-1 PQ Anse aux Gascons (446.4 kw)
2 CBGAT-14 PQ Carleton (32 kw)

APPLICATIONS FOR NEW TRANSMITTERS
24 PQ Wakeham (100 w; R-CBMT, ch. 6, Montreal)

APPLICATIONS FOR CHANGES
ON Owen Sound; CICA-TV-12, ch. 12: 41 kw to 52
PQ New Carlisle; CBVN-TV, ch. 45: 5.19 kw to 5.32 kw

SA Regina; CBKFT, ch. 13: to originate programming instead of repeating CBWFT, ch. 3 in Winnipeg, Manitoba. (140 kw)

SA Several stations to repeat CBKFT instead of CBWFT: CBKFT-2 (Prince Albert); CBKFT-3 (Debden); CBKFT-4 (St. Brieux); CBKFT-5 (Zenon Park); CBKFT-6 (Gravelbourg); CBKFT-7 (Ponteix); CBKFT-8 (Willowbunch); CBKFT-10 (Moose Jaw); CBKFT-11 (Leoville). (oops: respectively channels 3, 22, 7, 21, 39, 22, 21, 16, 31.) Also include CBKFT-1, ch. 13, Saskatoon, and CBKFT-12, ch. 41 in North Battleford.

WESTERN TV-DX

Fred McCormack
Box 5221
State University Sta.
Fargo, ND 58105

July 1985

Deadline: 8- 9-85

This month's column is dominated by reports of E skip loggings, but there are also reports of some excellent tropo loggings out to 800 miles on UHF.

I would like to take this opportunity, early in the reporting season, to encourage all western TV DX'ers to report their loggings. I would also like to encourage timely reporting and the inclusion of at least the date, time (indicate standard), and mode of propagation. I would also like to see more consistent reporting of distances. I think these figures make the significance of your DX openings much more apparent to DX'ers who don't happen to live in your neck of the woods.

Well, on to the DX!

New _____ New Mode _____ Tent. - t Unidentified - unid S/On - + S/Off - =
ID Color Bars - @ _____ Unid Color Bars - % IHTP - \$ Misc. Test Patterns - &

John Ebeling, 9209 Vincent Avenue South, Bloomington, MN 55431-2157

CST

I finally have some TV DX to report from the cabin at Prosit, Minnesota. As you may know, I usually have the set running all day during the summer months looking for the Es tip-off for the FM band. So often, the Es doesn't get up beyond channel 2.

Anyway, here is what was noted:

May 1985	25 Es 1300	unid channel 2	25 Es 1905	KUTV 2 UT
11 Es 2000 KTVQ 2 MT	1330 KUTV 2 UT		2200 KMLD 2 TX	
(Short opening)	1355 XEPM 2 CH		26 Es 2330 WBRZ 2 LA	
25 Es 1200 KNAZ 2 AZ	1730 WSB 2 GA		27 Es 1129 WCBI 4 MS	
1230 KWGN 2 CO	1844 WCBD 2 SC		1350 WTTG 5 DC	

The XEPM logging had ID's for both XEW and XEPM, but XEPM was an overlay on the top 1/3 of the picture - probably a relay of XEW network. (That is correct. fm)

Dave Pomeroy, 1169 Webster, Topeka, KS 66604-1502

12- 8-83 tr	KMEG-14 IA	KGCT-41 OK	8-22-84 tr	WTVP-47 IL	WFIE-14? IN	WBAK-38 IN
KEKR-62 MO		KPOM-24 AR	WPWR-60 IL	K33AA-33 IA	(Newswatch)	WLFI-18 IN
	6-12-84 tr	KTVF-29 AR	WFBN-66 IL	KITN-29 MN	WEVY-44 IN	WICD-15 IL
6-10-84 tr	WESH- 2 FL	K30AE-30 OK	WCFC-38 IL	KYIN-24 IA	KHNE-29 NE	WUST-16 IL
K38AK-38 OK		K46AH-46 OK	WFLD-32 IL	KTMA-23 MN	K23AA-23 NE	WAND-17 IL
K46AH-46 OK	6-14-84 tr	KCBR-17 IA	WSNS-44 IL	KCAU- 9 IA	KOOD- 9 KS	
KOKH-25 OK	KSPR-33 MO		WAND-17 IL		WBBS-60 IL	12- 8-84 tr
KUAT-43 OK		8-15-84 tr	WICS-20 IL		(Spanish)	W49AA-49 IL
KBTO-14 OK	7- 8-84 tr	KDNL-30 MO	WRSP-55 IL	12- 7-84 tr	WFBN-66 IL	KMTC-27 MO
KGMC-34 OK	KMTC-27 MO	KNLC-24 MO	WLFI-18 IN	K30AL-30 KS	WPDS-59 IN	KBTO-14 OK
K40AI-40 MO	KDNL-30 MO		WFHL-23 IL	KHBS-40 AR	WTVP-47 IL	KOKH-25 OK
		8-16-84 Es	WILL-12 IL	KPOM-24 AR	WHMB-40 IN	K30AL-30 KS
KYNE-26 NE	7-14-84 tr	WSAV- 3 GA	K40AI-40 MO	KMEG-14 IA	unid ch 22	KGCT-41 OK
WRSP-55 IL	KSIN-27 IA	WJBF- 6 GA		KAUT-43 OK	WFLD-32 IL	WRAU-19 IL
WICS-20 IL	KGMC-34 OK		8-24-84 tr	KGMC-34 OK	WSNS-44 IL	KHBS-40 AR
WEEK-25 IL	KOKI-23 OK		K30AL-30 KS	KOKH-25 OK	WEEK-25 IL	WRSP-55 IL
WMBD-31 IL	KBTO-14 OK	8-??-84 tr	WRSP-55 IL	KOKI-23 OK	WMBD-31 IL	WBLN-43 IL
unid 60,66	WXOW-19 WI	KMEG-14 IA	WICS-20 IL	KOZK-21 MO	WRAU-19 IL	KOKI-23 OK
(Chicago??)	KTIN-21 IA	K20AD-20 MN	KMEG-14 IA	WICS-20 IL	(over KCPT)	KPOM-24 AR
K38AB-38 IA	KYIN-24 IA	K33AA-33 IA	WMBD-31 IL	KTBO-14 OK	WBLN-43 IL	KTVP-29 AR
K33AA-33 IA	WQOW-18 WI	KTIN-21 IA	WEEK-25 IL	WRSP-55 IL	WCTU-26 IL	KDNL-30 MO
KMNE- 7 NE	KOKH-25 OK	K30AL-30 KS	WICD-15 IL	KBSI-23 MO		

In addition, the following new stations have been seen here in the last year: WLRE-26, Green Bay, WI; WXGZ-32, Appleton, WI; K30AM-30, Lawrence, KS (ID's only as "TV-30"); and XEPB- 2, Monterrey, NL.

LPTV channel 40 in Topeka and KSAS-24 in Wichita should be on by mid-summer. Construction of channel 43, Topeka, and channel 38 in Lawrence are questionable at this date.

(Good to hear from you again, Dave. I hope to get regular reports from your QTH this season. fm)

William Eckberg, RR#4, Dixon, IL 61201

CST/CDT

Equipment: 1966 Zenith b&w tube receiver ch 14N22, modified Zenith 175-1953 detented tuner. Channel Master 1110 VHF antenna. Channel Master 7 foot UHF parabolic antenna with Winegard PA4975 preamplifier on a 40' tower.

April 1985	21 tr 0500	W32AC 32 IN 231	25 Es 1328	XEPM 2 CH 1162
		(Muncie local)	1815	KUTV 2 UT 1139
17 tr 0530	WVAH 23 WV 463	22 tr 0500	K33AA 33 IA 158	2115 KNMZ 2 NM 972
25 tr 0530	WQMW 21 MI 234		(Ottumwa s.b. KIIN-12)	2130 KWGN 2 CO 811
			(With WISN-12)	2200 KNME 5 NM 1026
May 1985		0630	W56AB 56 WI 76	2220 KTVK 3 AZ 1348
			(Darlinton WMTV-15)	2300 KNAZ 2 AZ 1258
10 tr 0525	KSNF 16 MO 413	23 Es 1235	WCBF 2 SC 797	26 Es 1255
0530	KODE 12 MO 413	24 Es 1150	WESH 2 FL 983	1825 XEPB 2 NL 1282
0605	KHBS 40 AR 513	25 ms 0447	CKND2 2 MB 752	1900 WGBH 2 MA 918
0630	KTVF 29 AR 463		0559 KJRH 2 OK 519	2255 XEPM 2 CH 1162
0640	KPOM 24 AR 513	Es 1300	KMID 2 TX 967	2320 KMID 2 TX 967
0700	KGCT 41 OK 519	1310	KTVQ 2 MT 968	27 Es 1105
				KWGN 2 CO 811

I had a good tropo opening on May 10. It was limited to a small area that had eluded me before. I would have missed it if I hadn't noted Springfield U's. Tropo in the other directions was below normal.

I was surprised to receive CKND2 via a strong 3-4 second meteor burst. They had news with the call in the upper right corner. The intensity and number of bursts at this early hour was unbelievable. I never thought any stations were on the air before 5 AM to the north.

There was no hint of E skip until May 23rd. I had been checking regularly. KCBR-17, Iowa has been on all night for at least three months with color bars with a large boxed 17, call letters above, and location below in the lower right corner. Also, WHO-13, Iowa is on all night with the call letters in the top center and news below. They are an opportunity for long haul tropo.

I noted new ID's for four stations, namely; KNMZ-2, New Mexico; WSYM-47, Michigan; KZKC-62, Missouri, and WHOI-19, Illinois.

(Bill, CKND used to run a twenty four operation. It seems that they still do. fm)

Jeff Kadet, Box 20, Macomb, IL 61455 (309)-833-1809

CDT

Equipment: Zenith N1310 color, Channel Master 1110 with CP 3800 preamp, RG-11 at 50', Channel Master 7' dish with PA 4975 preamp, .500 cable at 55'

May 1985	10 tr 0538	KTXA 21 TX 640	25 Es 2121	KUTV 2 UT
	0545	%KTVVt 36 TX	2359	KNAZ 2 AZ
4 tr 0530	Cleveland 25,43, and 61. 475	0629	%KOED 11 OK 415	26 Es 0005
			(Then OETA s/on)	KTVK 3 AZ 1265
5 tr 0300	OKC 14, 25 510	13 Es 1830	WESH 2 FL	1825 XEPB 2 NL
	0415 %KTXAt 21 TX	1900	WEDU 3 FL	2255 XEPM 2 CH
	0638 KTXA 21 TX 640	16 Es 1310	unid ch 2 French	2300 KMID 2 TX
9 tr 2310	OKC 34, 43 510	2014	WPBT 2 FL	Es 0000
10 tr 0125	KXII 12 OK 565	2027	unid 2,3 Spanish	0020
	0138 OKC 14, 25 510	2030	WCIX 6 FL	0029
	0200 KWTW 9 OK 510		unid 2 Spanish	1030
	0209 =KFDxt 3 TX		(French movie w/ Spanish titles, Cuba?)	1036
	0215 KLMG 51 TX 600			1050
	0407 %KTXH 20 TX 800			1059
	0519 KTEN 10 OK 520	23 Es 1700	WGBH 2 MA	KNOP 2 NE 530
	(ID w/classical music)		WBZ 4 MA	1115
0530	KHTV 39 TX 800		1200	KTVX 4 UT
0533	%KXXVt 25 TX		1221	KCNC 4 CO 755
	(0 kHz-WEEK-25)		1243	KRMA 6 CO 755
			1329	C??? 2 ON ???
			2200	WKTW 2 NY
				(*MCTV-CBC ID *)

Some decent Es (was beginning to forget what it looked like) and tropo this month. On the 10th, KLMG-51 was in from 0215 to past 0900, peaking at 0345 almost snowfree with their all night ID'ed color bars. The AM of the 31st had similar conditions with Dallas and Houston coming in again, but there was no sign of KLMG at all.

Es on the 27th was interesting. XEPM-2 was in from the evening before until 0250, the latest Es I've yet seen. KNOP-2 at 530 miles is the closest Es so far. KYCU-5 gives a visual ID with "TV3-TV5-TV10" on the screen. I'm not sure about the CBC call letters or location on channel 2. It might be Kenora. They had many ads for Sudbury, and the only

Jeff Kadet (continued) ID they gave after each program was a visual "MCTV-CBC" ID with the announcer saying "Mid-Canada Television."

I will be making a few TV DX improvements over the summer. I have decided to buy the house which I have been renting for the past two years. I had originally planned on moving out to the country to avoid WIUM-22, 1.7 miles SSW of here, but they are barely a problem at all. There is still some minor cable radiation with Showtime on channel 5 and USA on channel 13, but there are too many advantages to living in town. Anyway, the seventy foot tree which is just a few feet ESE of my tower will be cut down. It's dying anyway, and this should give a better shot in that direction (DC someday?).

I just got a five element Winegard low band antenna and will be using it vertically polarized with a preamplifier. St. Louis channels 2, 4, and 5; Quad Cities channels 4 and 6; Kirksville channel 3; and Champaign channel 3 can be real pests with Es although none of their transmitters is within eighty miles of here.

Lastly, it is apparently possible to rig up a Zenith 1310 UHF tuner so that it bypasses AGC completely. Some experimenting was done comparing the outboard tuner to the one in my set, and there was a definite improvement with weak stations. As soon as I can scrape up some \$\$\$, I'm going to have an outboard tuner which I can switch off and on. The outboard one overloads on stations with any significant signal strength. 73.

(Perhaps one of the Ontario area DX'ers can fill us in on your channel 2 logging. I am fairly sure that your logging was of channel 2, Kearns, a relay which used to have CFCL call letters. But I can't seem to find it's current call letters. Mid Canada Communications Corp operates in the Sudbury and Timmins areas, but the data in the 1985 TV Factbook is muddled and conflicting as to who relays who and what network is carried. fm)

Nathaniel Ely, 1237 East Johnson St., #2, Madison, WI 53703 (608)-257-5220

CST/CDT

Equipment: Quantum 1110, Spartan II VHF preamp (0061) from Chmstr; C.M. 7' dish with 4990 preamp at 61', 70'/30' runs of .412/RG-11 cable, H-D 73 rotor. Winegard DA-405 post amplifier (when locals off the air), 3 Channel Master 7206 "Hi Q" traps (UHF). Tower, QDMX MD-56 (free standing).

February 1985	25 tr 0130	KMTC 27 MO 460	12 tr 0038	WSYM 47 MI xWFLS	25 Es 1313	KSAF 2 NM 1025
	0201	KSPR 33 MO 460	14 ls late	WKBD 50 MI 310	1355	KXLft 4 MT
	0336	KFVS 12 MO 400	16 Es 1210	WLBZ 2 ME 1050	1417	KMID 2 TX 1025
26 tr 0005	KVFS 12 MO 400	1215	WGBH 2 MA 970	1422	KTVQ 2 MT 965	
	0042	WUAB 43 OH 400	1230	WABI 5 ME 1050	1426	XEPM 2 CH 1250
	0121	WAKR 23 OH 420		unid ch2 ATV-CTV	2338	unid ch 2 Mexico
				(St. John's ads)	26 Es 0003	KNAZ 2 AZ 1325
				unid ch 2 FF SRC	0930	WCBF 2 SC 890
March 1985	8 tr 1830	WQLN 54 PA 460	18 tr 1230	WHOI 19 IL xWRAU	1000	WPBT 2 FL 1305
	20 tr 2356	W49AA 49 IL 230	21 Es 1232	KPRC 2 TX 975	1059	WESH 2 FL 1090
	(Springfield WCIA- 3)		22 tr 0029	WSMht 66 MI		KUTV 2 UT 1175
			23 Es 1030	WESH 2 FL 1090	1128	KWGN 2 CO 860
				1100	1152	KBCI 2 ID 1360
April 1985	10 tr 1506	WQLN 54 PA 460		1200	1229	KTVQ 2 MT 965
	18 tr 0031	KFVS 12 MO 400		1200	1310	KXLF 4 MT
	(KPLR ID's-"St. Louis' only stereo tv sta.")			(WESH running "Atmospheric Interference" slide.)	1400	CFAC 2 AB 1325
	Evansville UHF's			1236	1915	WPBT 2 FL 1305
30 tr 0737	W68AA 68 IL 270			1248	1920	WESH 2 FL 1090
	(Danville WAND-17)			1300	27 Es 0034	KMID 2 TX 1025
				24 Es 1300	0035	unid ch 2 Mexico
				25 Es 1106		(I think I saw a ch 24 promo; not sure. XEW)
May 1985	10 tr 0156	KTVS 12 MO 400		1200	1228	KSAF 2 NM 1025
	Es 1945	unid ch 2 ABC w		1216	1330	CBFT 2 PQ 775
	11 Es 2000	KREMT 2 WA		1300	1358	WBZ 4 MA 970
		unid ch 4 west			29 tr 0500	WSMH 66 MI 280
		(Txn for the call wd)			31 tr 1349	WAQpt 49 MI rel.

(Nate, I note that Bill Eckberg saw channel 2, Santa Fe, using the call letters KNMZ on May 25th. I have also seen that call in use. fm)

Fred McCormack, 135 Prairiewood Drive, Fargo, ND 58103

CDT

Equipment: VHF: Broadmoor 9" black & white, Winegard CS-4053; UHF: Teknika 6510 tuner, Winegard CH-9095, Blonder-Tongue CMA-Uc pre-amp; Alliance rotor.

May 1985		27 Es (MUF 94.9 @ 1106 -TN)	7 tr 1358 WBRZ 2 LA 1185
10 Es 1707	unid ch 2 SE	1110 WAGA 5 GA 1115	1400 WEAR 3(AL)1225
1807	unid channel 5	(MUF 107.9 @ 1159 -NY)	(MUF 94.1-1449)
1820	WBBM 2 IL 570	1230 WTVH 5 NY 1045	1457 WLBTV 3 MS 1070
1827	WRAL 5 NC 1215	1243 WNEW 5 NY 1205	1520 WSB 2 GA 1115
20 Es 2045	unid ch 2 ABC s	(MUF 95.9 @ 1318 -NY)	1524 WBRZ 2 LA 1185
2053	KATU 2 OR 1240	(MUF 89.7 @ 1416 -MD)	1659 WSAV 3 GA 1320
2059	WDIQ 2 AL 1195	1448 KYW 3 PA 1175	1728 WBTW 3 NC 1140
25 Es 1355	KMID 2 TX 1060	1451 WMAR 2 MD 1135	(MUF 92.3 @ 1738 -NC)
1759	KBTX 3 TX 1120	1458 WPSX 3 PA 990	1751 WRAL 5 NC 1215
1800	KPRC 2 TX 1195	1529 WGRZ 2 NY 935	8 tr 0856 +KCPT 19 MD 550
1829	WKRN 2 TN 905		0857 KZKC 62 MD 550
1830	WWAY 3 NC 1320		0900 KDNL 30 MD 660
1936	unid ch 5 NBC		0905 KBST 23 MD 750
	(MUF 90.5-1942)		0918 KSNF 16 MD 685
1959	WBTW 3 NC 1140	2 Es 1030 WBRZ 2 LA 1185	0924 unid ch 15 ABC
2100	KPRC 2 TX 1195	1035 KTBS 3 LA 990	0946 unid ch 25 CBS
2156	XEPM 2 CH 1180	1059 KBTX 3 TX 1120	0919 WRSP 55 IL 610
2250	unid channel 5	(MUF 88.7-1159)	1003 WEVV 44(KY) 780
(MUF 88.7 @ 2300 -AZ)		1200 KPRC 2 TX 1195	Es 1055 WBTW 3 NC 1140
27 Es 0124	=KATC 3 LA 1185	1212 unid ch 5 CBS	1058 WSJK 2 TN 1005
0859	unid ch 2 se	7 tr 0920 KXNE 19 NE 320	(MUF 107.9 @ 1200 -TX)
0900	WEAR 3(AL)1225	KYNE 26 NE 390	(MUF 102.7 @ 1236 -TX)
1028	WWAY 3 NC 1320	KHNE 29 NE 425	1337 KENS 5 TX 1220
1030	KDKA 2 PA 945	Es 1156 WWAY 3 NC 1320	1358 KENW 3 NM 965
1059	WSIL 3 IL 755	1201 WPMY 2 NC 1150	1400 KFDX 3 TX 900
(MUF 94.1 @ 1100 -TX)		1229 WBTW 3 NC 1140	1437 KNMZ 2 NM 915
		1233 WRAL 5 NC 1215	
		(MUF 94.1 @ 1249 -NC)	

It was a nice period with a couple of new E skip loggings and some fairly long haul tropo at the last moment. I had to delay typing the column about half a day to avoid missing anything!

GOING TO NEW ORLEANS?

read all about it

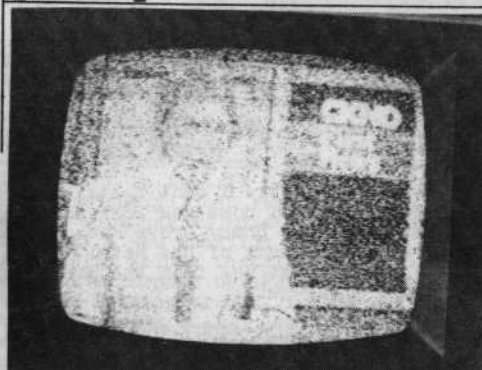
in this months

V. U. D.



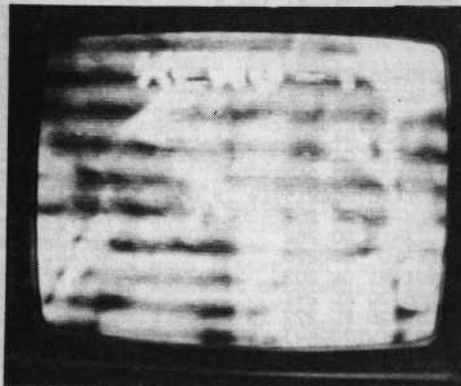
PHOTO-NEWS

David J. Nieman
12284 Nice Road
Akron, NY 14001
U.S.A.



This time we look at some E-skip photos from Jim Pizzi Lovington, NM.....

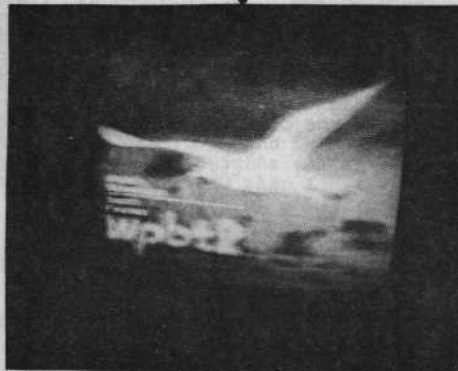
CKND-2 Minnedosa, MB
E-skip seen at 1184 miles



XEWO-2 Guadalajara, JAL
E-skip seen at 840 miles

WPBT-2 Miami, FL
E-skip from 1508 miles

KETS-2 Little Rock, AR
E-skip from 644 miles



EASTERN TV-DX

William J. Draeb
1304 Ellis St.
Keweenaw WI
54216

Deadline: 1st

July 1985
Bill Towshend; 4500 Conn. Ave. NW, #901, Washington DC 20008 (202)-966-8046

May 1985	May 1985	May 1985
6 Tr 0740 WAGN-40 NJ	6 Tr 0747 WVIR-29 VA	14 Tr 2154 WYAH-27 VA
0741 WALK-35 VA	0757 WTLN-63 VA	2200 WJVS-23 NJ
0744 WIKO-15 VA	14 Tr 2145 WTVZ-33 VA	2210 WREV-65 NJ
WPHL-17 PA	2147 WJGN-40 NJ	2219 WYRO-15 VA
0746 WYAN-27 VA		

The Tuesday, May 6 reports, were from work (just before I went upstairs to my office) at Marlow Heights MD, 11km SE of the Capitol dome and 20km SE of my QTH in NW DC. The reports for May 14 were from the Shady Grove Plaza in Gaithersburg MD at the end of the recently opened segment of "Le Metro" (the subway), 22km NW of my pad, both a considerable distance from the darn image jungle and tower farm which plagues VaF-UnF DXing here.

John Combs; 2831 Selma, Jacksonville FL 32205 EST-EDT (904)-389-2188

April 1985	April 1985	May 1985
26 Tr 0600 WJKA-26 NC 335	27 Tr 0817 WPTF-28 NC 410	10 Tr 0614 WRJA-27 SC 261
WPTF-28 NC 410	28 Tr 0754 WPI-15 AL 355	11 Tr 0708 WGXA-24 GA 201
WJPM-33 SC 297	0758 WSRE-23 FL 330	WMGT-41 GA 202
2000 WESA-14 SC 200	0801 WPAW-53 FL 316	2345 WAGT-26 SC 215
WTHN-23 SC 294	Unid-55	12 Tr 2335 WBSA-14 SC 200
WOLO-25 SC 263	0802 WKRG-5 AL t	WAGT-26 SC 215
WRJA-27 SC 261	0830 WJTC-44 FL 349	13 Tr 2100 WBSA-14 SC 200
WJPM-33 SC 297		WAGT-26 SC 215
WBFS-33 FL 313	May 1985	WFLX-29 FL 272
WRLK-35 SC 267	2 Tr 0712 WEVU-26 FL 277	WXEL-42 FL "
WUNJ-39 NC 344	2027 WRJA-27 SC 261	WTVX-34 FL 234
WDXL-39 FL 313	6 Tr 0755 WBSA-14 SC 200	2112 WPTV-5 FL 272
WHFT-45 FL 312	WCES-20 GA 207	2205 WBFS-23 FL 313
WLTN-23 FL 314	WGXA-24 GA 201	2240 W56BG FL 169
WLRN-17 FL t	WOLO-25 SC 263	(WESH-2 xltr)
2143 WPE-15 SC 313	WAGT-26 SC 215	14 Tr 0645 SC 10,14,15,19,
WLTN-19 SC 262	0800 WRLK-35 SC 267	25,27,33,35,
WIS-10 SC 270	WLTN-19 SC 262	0800 Miami 33,39,45
WUNK-25 NC 433	WIS-10 SC 270	+ W27AB.
WKFT-40 NC 364	0820 WMGT-41 GA 202	2256 SC 15,27,33;WB
2145 WGSE-43 SC 282	7 Tr 0650 WBBH-20 FL 241	B. 29,42; WTVX
WCCT-57 SC 267	WEVU-26 FL 277	15 Tr 0911 WRJA-27 SC 261
WFCT-62 NC 364	0703 W27AB(WTOG-44)	16 Tr 2128 SC 15,19,23,25,
2155 WPTF-28 NC 410	0820 WTVX-34 FL 234	27,33,35+W.P.B.
WAGT-26 SC 215	8 Tr 2137 WJKA-26 NC 335	Augusta, Miami.
WGXA-24 GA 201	WUNJ-39 NC 344	2139 WJBF-6 GA 214
WOLO-25 SC 263	2250 WPE-15 SC 313	19 Tr 0840 WBSA, WCES, WAGT
WJKA-26 NC 335	9 Tr 0718 W49AI FL 110	22 Tr 2205 " "
WPTF-28 NC 410	0743 WTVX-34 FL 234	23 Tr 0615 WIS-10 SC 270
WJPM-33 SC 297	10 Tr 0813 WBSA-14 SC 200	Es 1100 CKVH-3 ON 977
WRLK-35 SC 267	WAGT-26 SC 215	1126 WCYB-5 VA 425
WKFT-40 NC 364	0614 WIS-10 SC 270	1228 WNLN-6 MI 868
WNGT-41 GA 202	WOLO-25 SC 263	WNLN-6 MI 1034
		WLUK-6 MI 1156

The last three were heard on FM radio. WCYB-5 is the shortest Es I've seen. Tropo was routine this month, but finally got some decent Es. I had to leave in the middle of the opening, but I logged all 3 MI ch.6 stations while driving around Jacksonville in my truck! WCYB-5 is the shortest Es ever seen by me--it beats the 426 mi. logging of WWAY-3 which I made while I was in Orlando. Readable I.D., but bad multipath may make photo kind of murky.

Totals: 135 logged; 87 UHF; 7 low pwr xltres; 8 Es; 0 Ms; 10 states; 1 Canadian province; 1 Mexican state; 0 other foreign countries; 12 total political units.

Frank Wheeler; 6589 Wattsburg Road, Erie PA 16509 EDT

The following is my first report of the year. Memorial Day (today) was a good day for Es, which probably a lot of you found out.

Eastern TV-DX

Wheeler; continued---

July 1985

May 1985	May 1985	May 1985
10 Es 1658 KJRH-2 OK 943	23 Es 1230 KLNE-3 NE 1016	27 Es 1202 CKND-2 MB
1800 KLNE-3 NE 1016	1431 WBRZ-2 LA 1159	1217 KWGN-2 CO 1128
13 Es 1900 KSNV-2 KS 1015	26 Es 1240 WTHS-2 FL 1095	1355 KLDH-3 MN 682
1902 WBRZ-2 LA 1159	1254 WBRZ-2 LA 1159	1359 KDLO-3 SD 846
23 Es 1200 KSNV-2 KS 1015	1330 KPRC-2 TX 1210	1400 KBME-3 ND 1066
1228 KSNW-3 KS 963	27 Es 1130 KNOP-2 NE 1066	1630 KGFE-2 ND 917

Equipment: Sylvania 24" color TV; Archer VU-160 ant.; Servo-Rotor; Totals: 289 seen, 215 verified.

Frank Merrill; P.O. Box 7207, Toledo OH 43615 EST-EDT

This is what happens when I post nearly a year of DX notes to my logbook again it's not the most presentable, but it is an actual carbon copy of my log, which in turn is a condensation of my notes. I think if I move to Macomb (seriously!) and restart my log, my notes and my log will be one and the same. Logbooks in condensed form do get badly dogeared after 10 to 15 years of use. A new addition to this DX den, in 1985, was a used Jerrold low-band yagi (high gain), installed on the roof, 20' high instead of 70' up the tower. Its purpose became evident on 5/16 during the Es when the tower had trouble getting WLSZ-2, but it was easy on the lower Jerrold. I attribute this to making WCAK-3 possible over Cleveland (same direction) because they were equal strength on the Jerrold, but probably unreadable on the monster antenna. I recently added a Zenith 13" color portable, Model A 1310W, to my den, but much to my chagrin it is not equal to the older L3310 model. Selectivitywise it's still a hot little set, but selectivity has been decreased so that ch. 12 is "tough" between my 11 and 13 locals! The older L3310 can get ch. 12 from about 280° of rotor with no slopover of any kind from 11 & 13. People who want a truly great DX machine should try to find an old Zenith L3310 13" color set (same tuner may be in some other late 70's & early 80's Zeniths too), and you'll want the one with the UHF dial on top and the pushbutton AFC. The newer A1310W still has "decent" selectivity, but I'm really spoiled with the great selectivity on the old one. Unfortunately, the tuner in the L3310 has been slipping badly, and has to be fixed. I hope it's only a matter of tightening something up, and not replacing the tuner, though tuner replacement may not "cost" me stations because I doubt that the newer "inferior" tuner could interface with the older L3310 anyway. I'm typing to get some people looking out for other L3310's (I'd like to have as many as 4 or 5 of them) because I'm not sure that a better DX set will ever be made. The general public wants sets that are "easy" and lock into channels with strong AFC's and electronic pushbutton tuning. My L3310 outperformed Morrie Goldman's Teknika tuner in a recent "A/B" comparison test in Chicago -- selectivity was much better and image rejection was better, though the Teknika seemed to be somewhat more sensitive. Some technical friends of mine feel that the poorer selectivity on the newer A1310W may reflect the elimination of an I.F. stage to cut costs. They, and I, cannot see any reason they'd defect from a great tuner that was already very cheap to begin with. The above DX updated to May 19, 1985, brings by 14 year Toledo log to 697 and my combined 23 year Toledo/Michigan log to 726. That was after eliminating 2 or 3 non-convicted stations from my totals. I hope that this is the year for a good hi-band Es logging here and something from South Carolina!

August 1984

October 1984

October 1984

1 Es 0120 CRCK-TV2 SA	11 Tr 1930 WSKG-46, WICZ	12 Tr 1600 WCNV-27, WLUC-6,
6 Es 1330 CBRT-3 NS	-40, WENY-36, WNGC-	WHLU-13, WGTQ-8
15 Es 2000 KTVS-3 CO	34, CIII-22 snow-	1800 WCNV-27 MI
22 Tr 0900 KWA-7 MO	free, WNPB-16, WIXT	Cadillac
WGEM-10 IL	-9, WRCC-8.	2000 W69AV t; weak
25 Tr 2230-2300 WSAW-7,	2100 WGVK-52 MI	cci against W69AO
WKBT-8, WAOV-9,	Kalamazoo	2300+ WKPT-19, WFAT-19
WABO-12, WLUC-6,	(dual I.D.	WDBJ-7
WHRP-20, KIIN-12,	with ch.35)	13 Tr 0120 WJHL-11, WCYB-5
26 Tr 0400 WSIL-3, KPIR-11	2103 CICO-4-51 ON	2036 CBLFT-6-12 ON
WFO-13, CKGN-6(now CIII)	Penetanguishene	CKNC-1-7 ON
	(parallel to 32)	2135 CHEX-12 ON
Oct. 1984	2300 W46AD MI	2258 WBOY-12, W36AB
10 CW 1900 WRGT-45 OH	Traverse City	14 Tr 0126 CBLFT-1-44
Dayton	2312 WLLP-36, WAO-12	20 Es 1330+ WESH-2, WEDU-3
11 Tr 1930 WGTU-29 MI	12 Tr 1600 WGTU-29 MI +	WUFT-5.
snowfree, WPAW-7,	cci from W46AD,	1418 unid-8 t; brief.

Eastern TV-DX
October 1984

28 Tr 0547 WBLN-43 IL
KSHB-41 MO
KCEB-17 MO
0703 KMEG-14, Peoria,
WRSP-55, WTVO-17,
WICS-20, CKCO-42
0745 KETC-9 over CBET
2000-2110 N IL; Toron-
to U's strong. Strong
cci from the WI xltr
on 57.
2200 WFHL23 IL
Decatur

2308 KDUB-40 IA(WI)
29 Tr 0050-0220 KYFC-50, KM-
BC-9, KHQA-7, KNLC-24. 13 Tr 0730-0830 WKPC-
0320 KSHB-41 MO 15, WAND-17, WFHL
0543 KPLR-11 MO; read-
able against WTOL's TP.
2326 W66AK OH
Gates Mills
W65AH, W69AD, W67AL
2330 phantom on ch.66
carrying WDEO-24

2336 WTEY-54 NY; ghost-
ing on W4LN; snowfree
at 0028. "If I can get 11 Tr 0307 WBSI-23 MO
Poughkeepsie, why is NYC
so elusive?" (Answer: --
The Pocono Mts.-wd)
also WICZ-40, WENY-36,
WETM-18.

30 Tr 0038 W72AQ, W64AS, W46AB
0044 Vy strong phenomenon;
WUAB-43 unwatchable due to
multipath ghosting. WMGC-34
WVIT-30.
0053 W65-- , W64-- w/open
carrier. Also W64AS
0125-0140 W71AI with W46AB
& W46AB instead of WSKG.
0152 W26AA (why was WNEB
on all night??)
0248 W76AM NY
Allegany
0258 W73AR NY , WTVH-5
Arcade
0338 W69AD NY, xltng
Sarona W46AB
instead of WSKG. 14 Es 1900 KENW-3, KMID-2

Merrill; continued---
October 1984

30 Tr 0350 CKNC-9, CKNC-1
-7, CKNY-10, CKCO-12
CBFT-34 (snowfree)
CBFT-15, CICO-24,
CBFT-32, CBFT-44,
all t.s.s.
0357 W80AK NY (WNEB) 6 Tr
Springville
0402 W69AD; phantom
on 61 w/CFT-47.
0553 CHOT-40 ON
Ottawa-Hull
3/4 c.b.

13 Tr 0730-0830 WKPC-
15, WAND-17, WFHL
-23, KOKH-25 t,
WKSO-29, ASPH-33,
KGA-C-34 t, K38ABt
WHMA-40, WCVN-54,
Lexington U's.

December 1984
10 Tr 1830 Chicago
U's snowfree
11 Tr 0307 WBSI-23 MO
Cape Girardeau

14 Tr 2110 WSMH-66 MI
Saginaw-Flint
2040-2110 South OH
xltrs/WV +
W41AA, W55?? t
15 Tr 0100 WACP-49 MI
Saginaw
religious
(what's going on up
there??)
16 Es 1216 WLEZ-2 NE
1229 CKCW-2 NE
1230 WCAV-3 VT 560
Burlington
(I.D. slide
floored me!
Had "3-" discussion
show @ 1225 which I
was sure was CBET;
faded, and this came
up.
1302 CBFT-2 Pa
Also, unids 2-6.

July 1985

December 1984

14 Es 1906 XEJ-5 CH
Ciudad Juarez
end of movie;
then I.D. slide

January 1985

0140-0155 KWTV-9 t,
(as OKC completely
eludes me on Tr),
WTVB-9 MS t
ASNK-16 MO
KDNL-30 MO
WCAV-30 TN
WZTV-17 TN
WHNT-19 AL
WHTT-27 IL
WAAV-31 AL
snowfree
WGRB-34 KY
WFYZ-39 TN
WBRG-42 AL
WTO-21 AL
Homewood-Birmingham
0238 WBIR-10 TN
3/4 c.b.

Eastern TV-DX

Frye; continued---

July 1985

Rogers appeared fairly strong; the duct began to weaken by 1400, but I managed to hear the city of license for this PBS station too; Bismarck (you were watching KFFL-3)-wd. By 1420, a CBS affiliate overtook ch.3 with "As The World Turns" (probably KDLO-wd). Ads for an Empire Mall and Super Value market preceded the station I.D. which was abruptly lost in the ensuing hash. Can anyone shed some light on my ND loggings? I'd like to notify the stations of my catch. Fellow DXers, the "proof is in the pudding"; check the VHF low band routinely during the critical midday hours.

Equipment: Winegard Ch-5200, 40' above ground; CD AR-22XL rotor; Channel Master 0065 antenna systems preamp; Winegard DA-203 distribution amplifier; Mitsubishi CS-1952 19" color TV.

March 1985

May 1985

May 1985

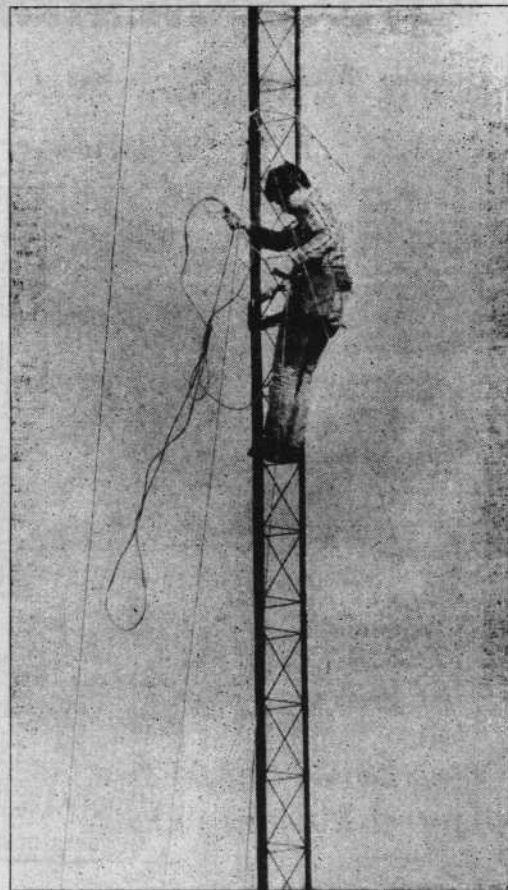
22 Tr 2330 KYW-3 PA 170 7 Tr 0525 unid-2; N 21 Tr 0030 WBEZ-4 MA 150
2335 WPVI-6 PA " 0530 unid-8; N 27 Es 1230-1330 KGFE-2 ND 1200
c.b. w/ tone 1340-1400 KEME-3 ND 1350
21 Tr 0015 unid-12; W 1430 KDLO-3 SD t
6 Tr 0130 unid-8; N CBS

Worldwide TV-FM DX Association

Station logos are from
Rich Eddie-St. Louis, MO



KMEG-TV
SEVENTH & FLOYD BLVD.
SIOUX CITY, IOWA 51102



Edward B. Frye: 317 Hooker Ave., Poughkeepsie NY 12603-3111 EST-EDT?

This is my first report as a WFFDA member (I joined 10/84). My current WIF loggings are not extensive because of significant interference my system receives from Vassar College's radio station, WVKR 91.3 (the campus lies adjacent to my home). Two Channel Master 0214 FM traps have improved my reception of the WIF "regulars" (chs.2,4,5,7,9,11 from Manhattan; chs. 6 & 10 from Albany), but vacant channels still absorb WVKR's carrier. Meanwhile, I'm constructing a deep fringe UnF system that, I trust, will bring me trouble-free DX action. Memorial Day here was in the 80's and the hazy afternoon sky seemed especially suited for Es. With WVKR off the air this holiday, I scurried to the set and swung my antenna to the west. Sure enough, chs.2 & 3 were roaring with activity! First up on 2 at 1235 EDT was the beginning of PBS' Sesame St.; initially, there was moderate fading, but a solid TASO Grade 2 picture arrived by 1300. No I.D. on the hour and fading returned by 1330, making visual identification difficult. I did catch a schedule of evening programs bearing the headline "Prairie Public Television". A garbled station I.D. followed - sounded like "KFFL"; I definitely caught the city of license, however; Fargo ND. (You were watching KGFE-2 Grand Forks ND which is a satellite of KFFL-13 Fargo ND.-wd). Over to ch.3 at 1340, the PBS show Mr.

COME TO NEW ORLEANS



AUGUST 2,3,4 FOR THE 1985 WTFDA CONVENTION

WORLDWIDE TV-FM



DX ASSOCIATION

TRAVELODGE
NEW ORLEANS WEST
2200 WESTBANK EXPRESSWAY
HARVEY, LA. PHONE 366-5311

 **LeBlanc's**
Alazm Systems, Inc.

YOUR HOST:

RON LeBLANC, WD5EQQ
4052 LEMANS DRIVE
MARRERO, LA 70072
(504) 340-4294
(504) 347-0738



4052 LEMANS DR.
MARRERO, LA.
347-0738 340-4294

COME TO NEW ORLEANS AUGUST 2, 3, 4 FOR THE 1985 WTFDA CONVENTION

ALL DXERS ARE WELCOME!

COME TO WTFDA'S ANNUAL GETTOGETHER! YOU'RE INVITED TO A FUN GATHERING OF YOUR FELLOW WTFDA CLUB MEMBERS IN ONE OF AMERICA'S GREATEST CITIES, NEW ORLEANS, LOUISIANA. HERE'S YOUR CHANCE MEET DX ENTHUSIASTS FROM ALL OVER NORTH AMERICA. THERE'LL BE SOMETHING TO INTEREST EVERYONE, INCLUDING FINE FOOD, TECHNICAL LECTURES, A CHANCE TO VIEW DX SLIDES AND AUDIO AND VIDEO TAPES, QSL COLLECTIONS, LITERATURE AND EVEN SOME DOOR PRIZES!

IT'S EASY TO GET THERE!

THE MAJOR U.S. AIRLINES, INCLUDING EASTERN, DELTA, AMERICAN, USAIR, CONTINENTAL, PAN AM, SOUTHWESTERN, AND UNITED ALL SERVE NEW ORLEANS, AS WELL AS RAIL SERVICE VIA AMTRAK--AND OF COURSE, GREYHOUND BUS SERVICE. PLEASE LET YOUR HOST KNOW WHEN YOU INTEND TO ARRIVE, ESPECIALLY SINCE THE AIRPORT IS A CONSIDERABLE DISTANCE FROM THE CONVENTION SITE.

FINE ACCOMODATIONS--REASONABLY PRICED!

OUR CONVENTION MOTEL IS THE TRAVELODGE NEW ORLEANS WEST, 2200 WESTBANK EXPRESSWAY, HARVEY, LA (504) 366-5311, AN EXCELLENT FACILITY. THERE ARE OTHER MOTELS IN THE GENERAL AREA, AS WELL AS A NUMBER OF RESTAURANTS TO SUIT JUST ABOUT ANY BUDGET. IF YOU PLAN ON STAYING AT THE TRAVELODGE PLEASE LET YOUR HOST HANDLE THE ROOM RESERVATIONS. ROOM RATES ARE GOING TO BE QUITE REASONABLE, AT \$34.00 FOR A DOUBLE (2 PERSONS), AND \$32.00 FOR A SINGLE ROOM PER NIGHT.

STATION TOURS WILL HIGHLIGHT THE PROGRAM!

PLAN TO ARRIVE EARLY, BECAUSE WE'RE EXPECTING TO HAVE SOME OF THE BEST STATION TOURS EVER. ALL TOURS WILL BE ON FRIDAY AUGUST 2ND, AND WILL TAKE MOST OF THE MORNING AND AFTERNOON. AT APPROXIMATELY 9:15 A.M., THE GROUP WILL LEAVE FOR A TOUR OF WRNO FM AND SHORTWAVE STUDIOS; AT ABOUT 11:00, WE'LL VISIT A VERY UNIQUE TV STUDIO, THE FULLY AUTOMATED FACILITY OF WNOL-38; AT 12 NOON, THE GROUP WILL BE FREE TO HAVE LUNCH IN THE WORLD-FAMOUS FRENCH QUARTER OF TOWN. AT 2 P.M., IT'LL BE TIME TO LEAVE FOR A LOOK AT THE FOLLOWING TRANSMITTER SITES: WDSU-6, WNOE-8, WYES-12, WNOL-38, WTX-AM, WLTS-FM, WNOE 101.1, AND WRNO 99.5. AT 4 P.M. THE GROUP WILL RETURN TO THE MOTEL BRIEFLY, AND THEN MEETS AGAIN AT 4:30 FOR A TOUR OF THE CENTRAL ALARM MONITORING OFFICE. AT 5:30 P.M., IT'S A VISIT TO THE SHORTWAVE TRANSMITTER OF WRNO, ADJACENT TO RON'S HOME DX SITE. FROM ABOUT 6 P.M. THROUGH THE REST OF THE EVENING, IT'LL BE A COOKOUT/DX GAB SESSION AT THE LEBLANC'S.

SATURDAY AND SUNDAY WILL BE BUSY!

WTFDA'S FAVORITE CONVENTION TECHNICAL LECTURER JOE GRAGG WILL BE GIVING A TALK ON SIGNAL PROPAGATION SATURDAY MORNING, AND WE'RE ALSO HOPING TO HAVE A LECTURE AND DEMONSTRATION OF HOME SATELLITE TELEVISION BY A REPRESENTATIVE FROM CHANNEL MASTER. OTHER TALKS AND DEMONSTRATIONS ARE BEING LINED UP RIGHT NOW, AND WILL BE ANNOUNCED. FOR THOSE OF YOU WHO ARE HAMS, WE EXPECT TO HAVE AN OPERATING AMATEUR RADIO STATION DURING THE CONVENTION, AND EXPECT CAPABLE OF WORKING ON 80, 40, 20, AND 6 METERS; AND, THERE WILL BE OPERATING TV AND FM DX SET-UPS AS WELL, AND WE'RE EVEN EXPECTING SOME DX! SATURDAY EVENING, THERE'LL BE ANOTHER COOKOUT AND DX SESSION INTO THE EVENING. ACTIVITIES WILL BEGIN AGAIN AT ABOUT 9 A.M. ON SUNDAY MORNING, WITH PLENTY OF TIME TO VIEW SLIDES, VIDEO TAPES (WE'LL BE ABLE TO SHOW BETA AND VHS) AND QSL COLLECTIONS. AFTER BREAKING FOR LUNCH ON THEIR OWN, ATTENDEES WILL BE ABLE TO PARTICIPATE IN THE TRADITIONAL CLUB BUSINESS MEETING AT ABOUT 1 P.M., ROUNDING OUT THE PROGRAM.

DON'T WASTE TIME--SEND IN YOUR FORM!

IF YOU'RE GOING TO NEW ORLEANS, DON'T HESITATE! FILL OUT YOUR REGISTRATION FORM NOW AND SEND IT IN WITH \$20.00 FOR THE REGISTRATION FEE (TO COVER REFRESHMENTS AND OTHER EXPENSES) PAYABLE TO RON LEBLANC AT 4052 LEMANS DRIVE, MARRERO, LA 70072. AUGUST WILL SOON BE HERE; COME ON DOWN TO NEW ORLEANS AND MEET YOUR FELLOW WTFDA MEMBERS!

SOUTHERN FM DX

Danny Buntin, editor
1312 N. Skyline
Stillwater, OK 74075

SOUTHERN FM DX

Dyer, cont.

JULY 1985

For FM DX reporters from: AL, AR, AZ, CA, CO, DC, DE, FL, GA, KS, KY, LA, MD, NC, NM, NV, OK, SC, TN, TX, UT, VA & WV. Happy DXing.

DEADLINE: 10th

HEATWAVE TROP RETURNS TO THE SOUTHWEST WHILE ES SEASON STRUGGLES TO GET ESTABLISHED.

Pat Dyer, 6315 Silvertip Dr., San Antonio, TX 78228 - May 6 to June 6 CST

Equip.: Realistic TM-1001 tuner into Allied 426, Archer 6-e beam at 20' with rotor.

5/11 tr	0029 XETr	94.1 NL Monterrey	275	5/26 Es	2136-2150 unIDs to 89.3	
5/13 tr		ID		2241-2316 unIDs to 89.3		
1957-2020 R. Belize	88.9 BZ Belize City	1080		5/27 Es		
5/16 tr	2259 KIOC	106.1 TX Orange, ID	295	0031 unID	94.1	
5/19 Es	1940 KBYU	88.9 UT Provo, c	1040	0753 unIDs to 89.3		
5/20 Es	1915 XETRA	91.1 BCN Tijuana, r	1100	1052 KFSDt	94.1 CA San Diego, c	1120
1920 KSDS	88.3 CA San Diego, twn	ID 1120		KYXY	96.5 CA San Diego, m	1100
1923 XHRM	92.5 BCN Tijuana, r	1100		1054 KPBS	89.5 CA San Diego, ID	1120
1924 KTFM	98.1 CA San Diego, ID, ads	1120		1055 XETRA	91.1 BCN Tijuana, area ad	1100
1929 KPBS	89.5 CA San Diego, ID			1100 KSDS	88.3 CA San Diego, ID	1120
5/23 Es	0829 KBEM	88.5 MN Minneapolis, wx, ID	1110	1115 f/outs		
0830 CNON-20t	89.3 ON Thunder Bay, Fr	1400		1252 unIDs to 96.9		
0835 KQRS	92.5 MN Golden Valley, r, ID			1257 WLK	93.5 GA St. Marys, town ID	1020
0836 WAKX	98.9 MN Duluth, ads	1250		1300 WTNT	94.9 FL Tallahassee ID	855
0836 KQDS	94.9 MN Duluth, wx, ID			1305 f/outs		
0850 KSTP	94.5 MN St. Paul, local ads	1110		5/28 tr		
WQJB	88.9 WI Hayward, ID	1205		0906 KWHW	93.5 OK Altus, local ad	360
0923 f/outs				0922 KZBS	98.9 OK Oklanoma City, ID	420
1031-1041 CBOB-20	89.3, WOFBt	88.9		0929 KKNG	92.5 OK Oklahoma City, EL, ID	
5/25 tr	0945 KBAT	93.3 TX Midlad, ad	280	0930 XHJD	98.9 NL Monterrey, ID	275
Es				0933 KECCO	96.5 OK Elk City, local ad, k	415
0952 unID	89.9 (spotty)			0945 KOOI	106.5 TX Jacksonvill, ID	260
1044 WNSN	98.7 IL Springfield, r, ID	870		0951 KOFM	104.1 OK Oklahoma City, ID	420
1046 WFMt	98.7 IL Chicago, c	1045		0952 KQTZ	105.9 OK Hobart, area ad	385
WAJP	93.5 IL Joliet, town ID	1015		2252 WCKW	92.3 LA Laplace, slogan ID	495
1047 WMBIt	90.1 IL Chicago, g	1045		2301 KIOC	106.1 TX Orange, ID	295
1055 KIYS	92.3 ID Boise, r, ID	1370		WRKF	89.3 LA Baton Rouge, ID	450
tr				2348 WGGZ	98.1 LA Baton Rouge, ID	450
1057 KNFM	92.3 TX Midland, ID	280		5/29 tr		
Es				0059 WPAP	92.5 FL Panama City, k, ID	785
1059 KUSU	91.5 UT Logan, ID	1115		0320 WTYX	94.7 MS Jackson, town ID	525
1101 KNPR	88.9 ND Minot, ND nx	1300		0332 KYKR	93.3 TX Port Arthur, ID	280
1102 WKLM	89.3 IL E. Moline, area wx	945		1136 KEGot	96.5 OK Elk City, k	415
1110 KFKY	94.9 ID Pocatello, r, ad	1195		1140 KKNG	92.5 OK Oklahoma City, m, ID	420
1123 KSKI	93.5 ID Sun Valley, ad	1305		1141 KZBS	98.9 OK Oklahoma City, ID	420
1125 KSDY	95.1 MT Sidney, local ad	1295		1155 KQTZ	105.9 OK Hobart, area wx	385
tr				1206 KOFM	104.1 OK Oklahoma City, ID	420
1128 KQIP	96.9 TX Odessa, ID	275		1232 KECB	94.7 OK Oklahoma City, city ID	
Es				5/30 tr		
1130 KBLIt	97.7 ID Blackfoot	1215		0021 WCKW	92.3 LA Laplace, ID	495
1134 KZBQ	93.7 ID Pocatello, ad	1195		0146 KTUX	98.9 TX Carthage, "TUX-99"	310
tr				0200 WMNF	88.5 FL Tampa ID	985
1136 KUFO	97.9 TX Odessa, ID	275		0208 WUSF	98.7 FL Tampa, ID	985
Es				0250 WYNK	101.5 LA Baton Rouge, ID	450
1215 f/outs				0252 WYNF	94.9 FL Tampa, area ad	985
1255 KBYU	88.9 UT Provo, c	1045		0301 KTIIZ	96.9 LA Alexandria, ID, r	385
1314 KUERT	90.1 UT Salt Lake City, c	1080		0809 KZBS	98.9 OK Oklahoma City, ID	420
1329 KOPR	94.1 MT Butte, ID	1365		0859 KDAQ	89.9 LA Shreveport, town ID	350
1336 KQPI	99.1 ID Idaho Falls, ID	1215		Es		
1355 f/outs				1642 KECPt	88.1 NV Las Vegas, s	1050
2003-2008 KMPRT	89.9 ND Minot	1300		1643 4 others from Las Vegas-t		
2129-2138 KMPRT	89.3 ND Grand Forks	1240		1644 KVMW	93.5 AZ Show Low, area ads	745
KFJMt	89.3 ND Grand Forks	1240		1704 KOOL	94.5 AZ Phoenix, wx, ID	835
				KKLTt	98.7 AZ Phoenix, r	
				1705 KJZZ	91.5 AZ Phoenix, wx, ID	
				1725 apx f/outs		
				cont....		

5/30 tr	1931 WPAP	92.5 FL Panama City, ID	785
	1940 WPKW	92.3 LA Laplace, wx	495
	1956 KZZB	95.1 TX Beaumont, ID	275
	2303 WRKF	89.3 LA Baton Rouge, ID, j	450
	2304 KDAQ	89.9 LA Shreveport, ID	350
5/31 tr	0000 WUSF	89.7 FL Tampa, ID	985
	0023 WTYX	94.7 MS Jackson, town ID	525
	0100 WMNF	88.5 FL Tampa, ID	
	0749 WRKF	89.3 LA Baton Rouge, wx, ID	450
	0839 KSMB	94.5 LA Lafayette, ID	395
	0843 KYKS	105.1 TX Lufkin, area ad	265
	0854 KTIIZ	96.9 LA Alexandria, local ad	
	0900 KVNE	89.5 TX Tyler, ID	230
	1939 WPAP	92.5 FL Panama City, ID, wx, ads	
	1958 WYNF	94.9 FL Tampa, town ID	985
	2032 KHYS	98.5 TX Port Arthur, ID	280
	2038 WTNT	94.9 FL Tallahassee, ID	855
6/1 tr	0020 KJEF	92.7 LA Jennings, ID	360
	0040 KYKR	93.3 TX Port Arthur, ID	280
	0108 KSKM	94.5 LA Lafayette, ID	395
	0111 WRKF	89.3 LA Baton Rouge, local wx	
	0112 WUSF	89.7 FL Tampa	985

6/2 tr	1025 KDAQ	89.9 LA Shreveport, ID, c	350
	0054 WGGZ	98.1 LA Baton Rouge, ID	450
	0059 WCKW	92.3 LA Laplace, ID	495
	0103 WYNK	101.5 LA Baton Rouge, ID	450
	0107 WRKFt	89.3 LA Baton Rouge, c	450
	0121 KSMB	94.5 LA Lafayette, ID	395
	0129 KMKS	92.1 TX Bay City, town ID	160
	0138 WKSJ	94.9 AL Mobile, "KSJ, k	630
	0142 WMNF	88.5 FL Tampa, ID, r	985
	0149 WKRQ	99.9 AL Mobile, "G-100", r	630
	0153 KIOC	106.1 TX Orange, "K-106", ad	295
	0159 KYKR	93.3 TX Port Arthur, ID, k	280
	0204 KHYS	98.5 TX Port Arthur, r	280
	0254 WKJN	103.3 LA Hammond, "CaJun"	490
	0258 KQXY	94.1 TX Beaumont, EL, ID	275
	0301 WQXY	100.7 LA Baton Rouge, ID, r	450
	0304 WUSF	89.7 FL Tampa, j, area psa	985
	0305 KTIIZ	96.9 LA Alexandria, wx	385
	0310 KZZB	95.1 TX Beaumont "B-95"	275

(large Es opening later this day
1725-1845 to 109+ MHz into GA, AL, SC,
NC - details next time.

85 May	#	min
13	1	10
19	1	5
20	1	10
23	2	70
25	4	155
26	2	10
27	4	40
30	1	25
sum	8	16 325
(84)	14	29 1035)

Still a bit of a sluggish Es season. Total only about 30% of May 1984. (see to right.) The big news, however, was the tropo. I spent a good bit of time on the TV(UHF) and on 144-MHz. 50-MHz even had ducting to New Orleans and probably more distant. Strange getting the 94.9 Tallahassee on Es then a few days later on trop.

Bill Townshend, 4500 Conn. Ave. NW #901, Washington, DC 20008 - (202)966-8046 EDT

5/20 tr	0832 WQWZ	99.1 NJ Zarephath, g	170
	0836 WIOQ	102.1 PA Philadelphia, r	
	0840 WMMR	93.3 PA Philadelphia, r	
5/20 tr	0844 WMGK	102.9 PA Philadelphia	
	0902 WRFP	102.5 PA Reading	
	0909 WKXW	101.5 NJ Trenton	

Some half-way decent tropo for a change around these parts. Reports were from my office before I "turned to" (Navy lingo for starting work) I work as a computer programmer for the National weather Service at Marlow Heights, MD, next door to WXTR 104.1 studios. That's my favorite station for regular listening since I am an oldies junkie. Another DX site is in Gaithersburg, MD, 14 mi. nw of my pad in upper nw DC while my office is 13 mi. SE of my QTH, which is the pits for serious FM/TV DX because of the tower farm and image jungle. Any evening reports my be from the Gaithersburg site, which is a few blocks from the end of the recently opened segment of the subway. A bandscan at that site on Sunday 4/21 1300-1500. Also Monday 5/14 2100-2230 yielded 51 stations. WBAA 88.9, WCVT 89.7, WCLH 90.5, WBJC 91.5, WGT5 91.9, WYST 92.3, WING 92.5, WPOC 93.1, WFSL 93.3, WQRA 94.3, WLTT 94.7, WRBS 95.1, WCLY 95.5, WWIN 95.9, WCEI 96.7, WKNZ 97.5, WIIY 97.9, WYGR 98.5, WHFS 99.1, WFRB 99.9, WGRX 100.7, WFLA 101.5, WLIF 101.9, WTGS 102.3, WXYV 102.7, WBEY 103.1, WSBT 103.3, WZVQ 103.7, WKTR 104.1, WBSB 104.3, WMD 104.7, WAVA 105.1, WQSR 105.7, WPKX 105.9, WMRK 106.5, WMBW 106.7, WMJR 107.7, WFSI 107.9 and all Washington, DC FMs. In addition to WXJR there are two more oldies stations in my area, WYST and WQSR. Enough for now. 73's.

Danny Buntin, 1312 N. Skyline, Stillwater, OK 74075 CDT

Equip.: Pioneer TX-9100 tuner, Antennacraft GFM-10 30' up with rotor

5/29 tr	0931 KSCB	107.5 KS Liberal, ad	230
	0940 KKBS	92.7 OK Guymon, ad	250
	0951 KEAN	105.1 TX Abilene	300
	1000 KSEZ	93.3 CO Lamar, ID, "Mighty EZ"	
	1000 KHUQ	106.7 KS Hugoton, ID, nx	260
	1032 KCMR	88.1 CO Manitou Springs, ID	465
	1038 KWKR	99.9 KS Leoti, ID	295
	1043 KSTC	104.7 CO Sterling, ID	460
	1045 KORQ	100.7 TX Abilene	300
	1200 KANZ	89.7 KS Oakley, xlator!	290
5/29 tr	2138 KJWR	89.9 KS Weir, g, low power	145
	2207 KGOL	107.5 TX Lake Jackson	
	2300 KUHF	88.7 TX Houston	460
5/30 tr	(hottest May day in OK City--104!)		
	0000 KOIR	88.5 TX Edinburg, s/off in EE, 685	
	SS g		
	0015 KHAZ	99.5 KS Hays, ID	235
	0025 KBNJ	91.9 TX Corpus Christi, ID	580
	0027 KUT	90.5 TX Austin, ID, wx	410
	0102 KESI	106.7 TX Terrill Hills-S. A.	

cont.

5/30 tr	6/1 tr
0806 KQMA 92.5 KS Phillipsburg, "Q-93"290	0857 KWDQ 102.3 OK Woodward, testing 135
0819 KRBE 104.1 TX Houston, ID 460	1000 KWKS 94.3 KS Winfield-Ark. City, ID 75
0821 KASE 100.7 TX Austin, "Case 101" 410	6/7 Es
0826 KJNE 102.5 TX Hillsboro, k 285	1832 WCEZ 93.5 SC Columbia
0834 KSRH 96.5 TX Houston, wx, nx, r 460	1834 WKJZ 92.7 GA Dublin
(most others in good from Houston.)	1900 WRJA 88.1 SC Sumter 970
0838 KNFO 95.5 TX Waco 320	tr
0841 KBUC 107.5 TX San Antonio, "K-Buck"	2255 KFKF 107.5 AR Mountain Home, k, \$
0904 KEYI 103.5 TX San Marcos, wx, "K-103"	6/8 tr
1000 KXXK 106.5 TX Galveston-Houston	1037 KGLI 95.5 IA Sioux City 450
2052 KBOR 103.1 OK Atoka, ad, k 130	1041 KADI 96.3 MO St. Louis 410
2053 KITX 95.3 OK Hugo, ad 200	1056 KIWR 89.7 IA Council Bluffs 365
2305 KDAQ 89.9 LA Shreveport, ID, j 320	1130 WSIE 88.7 IL Edwardsville 435
2321 KZZB 95.1 TX Beaumont 460	2014 KFKX 92.3 AR Pine Bluff, ID, k 320
6/1 tr	2042 KBCV 98.3 AR Bentonville
0019 WQXY 100.7 LA Baton Rouge 525	2045 KBFL 90.3 MO Buffalo, NY 245
0035 KAJN 102.9 LA Crowley, ID, k, Unx 495	2054 KAYG 97.7 MO Warsaw
0036 KTDY 99.9 LA Lafayette 565	2100 KADQ 89.9 LA Shreveport, ID 320
0037 WFMF 102.5 LA Baton Rouge, ID 525	2101 WMC 99.7 TN Memphis 405
0059 WRBH 88.3 LA New Orleans, s/off 590	2102 WKYV 106.7 MS Vicksburg, ID, k 445
0101 WWNO 89.9 LA New Orleans, s/off	6/9 tr
0844 KWIC 107.9 TX Beaumont, ad 460	0005 WGKX 105.9 TN Memphis, k, ID
	0222 WYHY 107.5 TN Lebanon-Nashville 620

On 6/9 more time was spent with TV UHF where 800+ mi. tr from Ohio and eastern TN was coming in. The earlier trop during the Memorial Day weekend assured me this season would be more productive than last year, which was even poorer than '79 as far as new stations logged. But Es is even poorer than last year. Well, we folks in the Southwest have taken the time to show you what our famous heatwaves can do for the trop, so why don't you folks from the Southeast show us what your early June record heatwave did for the tr, if anything at all? Surely something happened since it was more prolonged than ours.

KKLR translator comments, cont. from last month. The July 1984 VUD cover indicated that KKLR's translator is directional in coverage but such isn't the case since the translator seems to have a stable signal over all of Oklahoma City (except where overloading interferes) as well as in Edmond itself, the city of license. As a matter of fact the translator has a steady signal as far north as 2 miles north of the Oklahoma County line on I-35. It sure seems to be a highly efficient, heavy duty translator, quite unlike the other feeble 10 watters I've monitored in my car.

XXX

IT'S BEEN 5 YEARS AGO, 1980's SUPER DX!

Five years ago many FM DXers in the South and Midwest were enjoying the best DX season they ever experienced. 1980 was famous both for its long lasting tr and Es openings. June 1980 featured two monumental openings with both amazing dxers by lasting a solid week. Before the openings were over stations from hundreds of miles away had been logged from most all directions with distances logged ranging up to 1000 miles. At one point a 10 watter was logged from a distance of 410 miles. The signal intensity of much more powerful stations from similar distances was incredible. DX or CCI could be found on nearly every channel. By September 1980 the VUD FM report columns both in agreement that it had been the best season ever. Es was also around in 1980, though it was a rather strange season, considering that the bulk of the activity happened on June 18 and July 17 with some DXers having the skip in all day from a variety of directions with some commenting that it was the best ever. If there were better times for DXing than 1980, then the old-timers of the hobby have failed to point them out. Here's Tim McVey's comments on that great year, "Yes, 1980 was an incredible year, especially compared to the 5 years since then. Actually, I can't believe 5 years have passed already!! I really cleaned up that year and didn't even check the band as much as I could have. Seems like between dates, working, and other things that summer I had very little time to even so much as turn on a receiver, but there was always something there when I did." Tim's comments in July 1980 SPM report, DXing in TN, "...by now TX FM is like locals, with full stereo quieting, and s-meter all the way to the right!...KAFM and KOAX(Dallas) stayed in in full stereo for over 22 HOURS!" Other DXers comments from 5 years ago, "June 25, an all time record breaking heatwave started in TX, OK, AR, KS, and MO all at once. This created hot air rising to a dome of cold air that created fantastic tr from south to east 270 degrees that lasted 10 days." "All I can say regarding the summer of 1980 is: Incredible!" "Stations from the St. Louis area at 310 mi. have been full strength competing with the locals nearly every day. So many stations were blasting in that it was impossible to get ID's on everything." "May 18 to July 15, best two months of DX I have ever had." "I just went home and immediately got on the radio. It was red hot with ES from west to east. This opening lasted until 2130--a 9 hour opening, fantastic!"

XXX

FM STATIONS

FM SCOREBOARD

Fred Nordquist
7945 Boxford Road
Clay, NY 13041
Deadline: the 5th

STATION	NAME	LOCATION	TOTAL	88-92	ES	MS	AU	USA	CN	MX	FO	TPU	YB	AS OF:
1	PAT DYER	TX SAN ANTONIO	1838	283	1585	32	0	43+	3	16	4	67	70	03/31/85
2	DANNY BUNTIN	OK STILLWATER	1588	242	913	4	0	48+	5	9	2	65	74	11/24/84
3	BRUCE ELVING	MN DULUTH	1496	213	1231	8	7	44+	3	1	0	49	48	03/03/85
4	JOHN EBELING	MN BLOOMINGTON	1444	232	813	48	79	47+	4	5	0	57	52	01/02/85
5	JIM PIZZI	MN LOWINGTON	1313	185	1044	27	0	38	5	20	3	66	81	03/04/85
6	RALPH STROBEL	IN MUNCIE	1234	327	223	44	4	38+	3	1	0	43	72	05/02/85
7	FRED NORDQUIST	NY CLAY	1219	201	592	29	57	39+	5	0	2	47	69	06/12/85
8	MIKE BUBAJ	CT ENFIELD	1213	156	652	7	21	37+	4	0	1	43	74	12/31/84
9	FRED MCCORMACK	ND DES LACS	1098	148	881	25	87	44+	6	4	0	35	65	06/28/84
10	PETER SAMATZKY	ON KITCHENER	1088	167	588	112	6	38+	7	0	1	47	71	11/11/84
11	JOSEPH FELA	NJ S. PLAINFIELD	1062	218	589	2	9	37+	5	0	3	46	68	06/22/84
12	DAVID NIEMAN	NY ARDOR	994	252	244	35	19	41+	7	0	2	51	59	01/01/85
13	FRED MCCORMACK	ND FARGO	868	186	565	3	48	47+	5	2	0	54	74	06/28/84
14	HANK HOLBROOK	MO CHEVY CHASE	814	282	216	16	0	35+	5	0	3	44	59	04/26/84
15	JOHN JEFFERSON	CA PLEASANTON	765	158	417	129	0	24+	4	4	0	32	57	08/19/84
16	JOHN EBELING	MN PROSIT	672	121	364	3	5	41+	8	0	0	51	75	01/02/85
17	DANIEL GETTING	PA BROOMALL	657	151	226	6	3	32+	6	0	0	39	77	11/11/84
18	RICHARD STEINBERGER	MA HUDSON	648	133	286	12	6	35+	4	0	0	48	58	09/22/84
19	JOSEPH SMITH	NY SPRINGFIELD	685	88	165	0	0	34+	2	0	1	38	71	04/28/84
20	ALAN MICHAEL	MA SPRINGFIELD	485	56	256	0	0	36+	4	0	0	48	52	07/26/84
21	PAT BURKIN	WI WEST ALLIS	428	89	81	0	0	32+	3	0	0	36	78	08/29/84
22	THOMAS YINGLING	MD BALTIMORE	354	54	131	1	0	0	0	0	0	8	71	04/08/84
23	PAT BURKIN	MN WOODBURY	329	51	97	2	0	31	1	1	0	33	81	08/29/84
24	MIKE HOGAN	IL BURNHAM	315	62	32	0	0	24	1	0	0	25	76	08/16/84
25	BOB SNOLAREK	NJ OLIVICK	263	68	1	0	0	15	1	0	0	16	78	10/29/84
26	BOB SCHWEITZER	NJ E. BRUNSWICK	245	75	7	0	0	11+	0	0	0	12	77	08/10/84
27	PAUL MOUNT	NJ TERANECK	216	28	28	0	0	21+	1	0	0	23	79	04/02/84
28	BILL NOLLMAN	CT NORWICH	204	31	31	0	0	23	0	0	0	23	81	03/12/85
29	RONALD PURDIE	MN BYRON	188	3	95	0	0	28+	0	3	0	24	81	06/30/84
30	FRANK WHEELER	PA ERIE	155	19	3	0	7	1	0	0	0	8	64	03/04/85
31	WILLIAM HEPBURN	ON NIAGARA FALLS	144	51	35	0	0	18+	1	0	0	20	79	08/10/84
32	GUS MANDUSO	MD CHEVERLY	128	16	2	0	0	9+	0	0	0	7	70	08/22/84
33	BOB SCHWEITZER	NJ OLD BRIDGE	125	33	0	0	0	9+	0	0	0	18	82	08/10/84
34	WILLIAM HEPBURN	NT CORAL HARBOUR	56	5	55	0	0	5	8	0	0	13	84	08/10/84

**VERIFIED

COLUMN DEFINITIONS are as follows: Total=Total number of FM stations logged. (Freq. changes count as a station, call letter changes DO NOT count. Also count a station only once regardless if logged by different propagation modes.) 88-92=All stations logged from 88.0 to 91.99 Mhz. ES=Total number of stations logged via E-skip. MS=Total by meteor scatter. AU=Total via Aurora USA=Total number of states and the '+' = Washington, DC. CN=Number of Canadian provinces logged. MX=Number of Mexican states logged. FO=Number of foreign countries, but not Canada or Mexico. TPU=total number of political units=sum of USA CN MX and FO. YB=The year you began DXing

Thanks to those who sent in their FM statistics. I want to welcome Bill Nollman to the WFTDA and this column. Sorry for a couple of members totals dropping out of the last FM Scoreboard --- a case of using an old disk file by mistake. They were David Nieman and Frank Wheeler. Ralph Strobel noted receiving 13 stations via MS on 98.9. Pat Dyer reports his "personal best" records below:

Es 88.5 WHCF ME Bangor 1925 miles
Tr 3 Miami Stations 1150 miles
MS 96.1 KID ID Idaho Falls 1215 miles
Shortest Es = 96.9 KNID OK Enid 480 miles
Shortest MS = 94.7 KEBC OK Okla City 420 miles

Bruce Elving reports his Kearney NE totals at 678, but soon he'll be beefing up his Duluth totals as he is moving back up there in late June. I encourage more of you to send in your FM statistics totals, including any distance records (See the April 85 issue for the last issue), state/province stats (see next page), and FM Scoreboard (see above). Entries for the States Stats should surpass those highest or second highest number of FM stations for each state/province/etc -- and indicate your DX location from which you logged them. Also, you may send in your "personal best" or very unusual DX stats, and I'll include them in this column.....73, Fred.

PA Sherrville WMGZ-FM 95.3 330' (3000 h.v.)
PA Tyrone WGNR 101.1 8500 h.v. (1170')

FORMATS/NETWORKS

AL Dothan WOOF-FM 99.7 r, still "Woof Radio"
AR Benton KAKI 107.1 m, still "FM-107"
CA Escondido KOWN-FM 92.1 b (from r)

KOZY 105.3 Cozy-105 (seemed strict), b
TX Houston KLOL 101.1 no nonID
TX Lubbock KFYO-FM 102.5 no nonID

NOT IN STEREO: [Comments below]

AL Dothan WOOF-FM 99.7 r, still "Woof Radio"
AR Benton KAKI 107.1 m, still "FM-107"
CA Escondido KOWN-FM 92.1 b (from r)

IL Winnebago 95.3 WKMD (WYFE)
IN North Vernon 106.1 WNVJ (not WINN;
WINN may be AM affiliates' calls; I heard

STEREO

IL Chicago WGCI-FM 107.5 has Greek only on
92 kHz, taking it off 67, which is now blank
KS Dodge City KDCK 95.5 telemetry (X) 92

NEW FM STATIONS IN MEXICO
Aguascalientes, Ag. 103.7 XHMR 2800 c.p.
106.3 XHUU 1000 h.v. ON AIR

STEREO

Chihuahua CH XHUA 90.1
Ciudad Camargo, Ch. 106.5
Ciudad Juarez, Co. XHJZ 107.5

XHIM 105.1 770 h.v.
XHGU 105.9 46,500 h.v.
Ciudad Obregon, So. XHFL 90.5 12500 h.v.

STEREO

Ciudad Obregon, So. XHFL 90.5 12500 h.v.
Coatzacoalcas, Ver. XHNE 100.1 5100 h.v.
XHTD 101.7 9800 h.v.

San Luis Potosi SLP XHOB 96.1 4000 h.v.
XHTL 99.3 1,800 h.v.
XHPM 100.1 20,000 h.v.

STEREO

San Luis Potosi SLP XHOB 96.1 4000 h.v.
XHTL 99.3 1,800 h.v.
XHPM 100.1 20,000 h.v.

PROPOSED NEW SCS CATEGORIES

A ABC network relay, either the Information/
Talknets or Entertainment/Paul Harvey
B Relays of networks other than ABC,



Sign of the time? Above is a station that thinks
more of being on cable FM than on AM!
SPOTLIGHT ON MEXICO

The Mexican ministry of communications, after
several years of not hearing from them, came
through in fine style with a complete listing of

JIM PIZZI: "FANTASTIC GOING ON THE MEXICAN FM INFO. FILLS IN A LOT OF HOLES ON MY UNID'S. WHEN YOU WRITE TO THANK THEM, MAYBE YOU CAN REQUEST TV TOO, WITH OFFSETS, IF POSSIBLE. . . IF YOU DO ASK AND GET A RESPONSE WITH INFO ON TV LISTINGS, COULD YOU SEND ME A COPY (BILL FAHBER, TOO)? [I DO INTEND TO THANK THEM FOR THE DATA, BUT I DON'T WANT TO BE TOO PUSHY AND ASK FOR OTHER THINGS. I WOULD LIKE TO HELP BILL OUT WITH HIS COLUMN, BUT WOULD HOPE YOU OR HE WOULD WRITE TO MEXICO DIRECTLY. I HATE TO TRY TO PUSH MY LUCK AND SHOW THAT I FEEL THE INFORMATION I RECEIVED FROM MEXICO WAS AT ALL INCOMPLETE. AS FAR AS OTHER COUNTRIES GO, I WONDER IF MIKE DORNER OR SOMEBODY ELSE SHOULDN'T TRY TO CONTACT THEM FOR A LATIN AMERICAN FM STATION UPDATE?]"

"ON CORDOBA 92.1 XHPG, I THOUGHT THEY SAID XHPT; T AND G SOUND SIMILAR—BUT I DEFINITELY DID HEAR XHZN ZAMORA ON 91.9. I SUPPOSE IT'S POSSIBLE THEY WERE OFF FREQUENCY FROM 92.1—MODULATION WAS DISTORTED A LITTLE. ALSO HEARD A \$, M STATION ON 98.8 THAT MENTIONED HIDALGO MANY TIMES ON 12-12-84. NOTHING LISTED ON 98.8 THAT'S CLOSE TO THE STATE OF HIDALGO? ALSO WHAT ON XHNA 101.1 CAMPECHE—NOT ON THEIR LIST? I ALSO HAVE LISTINGS ON XHHB 94.7 OREGON, SON., XHNG 98.9 TAMPICO AND XEJBFM 92.1 CIUDAD VICTORIA. . . THANKS AGAIN FOR THE FM INFO; I REALLY APPRECIATE IT. IF YOU THINK YOU'RE ON A ROLL IN GETTING INFO, TRY CUBA, GUATEMALA, ETC. WHO KNOWS, SOME OF THEM MAY RESPOND!" SPECIAL THANKS GO TO **DR. RICHARD WOOD**, WHO SEVERAL YEARS AGO, DRAFTED THE SPANISH FORM WHICH I SENT TO MEXICO.

TOM CORNELL SENDS STATION NEWS FROM IN, INCLUDING SOME NEWSPAPER FORMAT SCHEDULES AND LOGOS. "WIAN INDIANAPOLIS MAY HAVE A LICENSE CHANGE, AND THE 92.7/93.8 'MUSICAL CHAIRS' FREQUENCY SHIFT MAY BE CLOSER TO TAKING PLACE. THE INDIANAPOLIS SCHOOL BOARD FEELS THEY SHOULD GIVE UP THE STATION AND ARE CONSIDERING SOME NEW ARRANGEMENT. WHAT THIS WILL RESULT IN, I DON'T KNOW. . . I AM OUBIOUS OF ANY MAJOR FORMAT CHANGE. CERTAINLY HOPE NOT! LARRY FUSS SENDS CLIPPINGS ABOUT A WAR THAT'S GOING ON IN ATLANTA BETWEEN TOP-BILLING WRMM 96.7 (WHICH THE ARTICLE MISIDENTIFIES AS "WARM") OVER THE USE OF "96" IN STATION SLOGANS. WRMM HAS LATELY BEEN USING ITS CORRECT FREQUENCY, 96.7, SO I DON'T KNOW WHY WSB-FM IS GRIPING. NOW THAT GAINESVILLE STATIONS WFOX AD WYAY HAVE BUILT TALL TOWERS AND COME INTO THE ATLANTA MARKET, THE RATINGS' RACES HAVE HEATED UP. RIMSHOTTER "WFOX MANAGEMENT HAD TO BE ELATED OVER ITS FIRST BUCK LAST FALL. THE STATION PULLED A 3.3 PERCENT SHARE COMPARED WITH WSB-FM'S 3.5 SHARE AND WRMM'S 5.3 SHARE. . . THE OVERALL ATLANTA RADIO MARKET IS ONE OF THE HEALTHIEST IN THE COUNTRY," SAID SHARON ARMBRUST, AN ANALYST WITH PAUL KAGAN AND ASSOCIATES, INC. OF CARMEL CA. "THE GROWTH RATE IS EXTREMELY STRONG". SHE ADDED THAT THE TWO FORMER GAINESVILLE STATIONS 'HAVE BEEN A STIMULANT' TO THE MARKET. "THEY HAVE REALLY HAD MORE OF A POSITIVE EFFECT ON THE ATLANTA MARKET THAN A NEGATIVE EFFECT. . . THEY HAVE GENERATED SOME EXCITEMENT AND WOKKE THE OTHER STATIONS UP."

ANOTHER GEORGIAN, **NICK LOMBARDI** SAYS, "AS YOU PROBABLY NOTICED, THE RKO RADIO NETWORK HAS CHANGED ITS NAME TO 'UNITED STATIONS RADIO NETWORK' (SOMETIMES SHORTENED TO 'UNITED STATIONS'). I ASSUME YOUR 'R' SYMBOL WILL NOW MEAN UNITED STATIONS."

A NICE TESTIMONIAL CAME FROM A USER OF ONE OF MY MODIFIED SCOTT FM TUNERS, **CHUCK KAUFMAN** IN OH: "THE SCOTT TUNER WITH SCA IS WORKING VERY WELL. THE SENSITIVITY AND SELECTIVITY IS MORE THAN I ANTICIPATED FROM ANY STEREO RECEIVER. I HAVE IT HOOKED UP TO AN OUTSIDE DIRECTIONAL ANTENNA. THE SCA ALSO WORKS FINE." A PERSON IN TENNESSEE SENT INFO FROM A SAN DIEGO NEWSPAPER ON RADIO. LISTED ARE SOME STRANGE STATIONS, SUCH AS "96.7 KSDT ROCK, JAZZ," WHICH I ASSUME IS NOT XHKY 95.7 TJUANA, BUT INSTEAD A LOCAL CABLE CHANNEL. SIMILARLY, IT SHOWS "96.8 KSM CAFM ROCK MUSIC, 98 KCR CAFM PROGRESSIVE MUSIC."

PETE NOLAN: "FROM MY CANADIAN SOURCE, WORD THAT CISO SQUAMISH BC HAS TWO NEW TRANSLATORS ON THE AIR: CIPN PENDER HARBOUR AND CIGS SECHLT. NATURALLY, HE DIDN'T MENTION FREQUENCY OR POWER."

[AND MY DATA ARE IN TRANSIT, SO I CANNOT CHECK EVERYTHING—B.E.] **ROGER BROWN, M.D.:** "I'M REALLY QUITE EXCITED ABOUT DISCOVERING WHAT'S HIDDEN IN THE SUBCARRIERS OF THE L.A. STATIONS. HERE'S AN AMUSING FACT: MY DATASPEED QUOTREK STOCK MARKET PRICE UNIT PIGGY-BACKS ON THE MOST RADICAL, ANTI-BUSINESS STATION IN CALIFORNIA (KPFF). I SUSPECT SCA MAKES FOR UNEXPECTED BED-FELLOWS. . . ."

"I AM RENEWING FOR ANOTHER YEAR IN WTFDA. I NO LONGER ACTIVELY DX, AND DX AS SUCH NO LONGER CAPTIVATES ME. THE PRIME REASON I AM RENEWING MY WTFDA MEMBERSHIP IS YOUR COLUMN—IT IS THE FIRST THING I POUR OVER WHEN I GET A NEW VUD! (BILL FAHBER'S TV COLUMN IS ALSO QUITE INTERESTING TO ME). I ONLY GLANCE AT THE DX COLUMNS, GENERALLY. . . YOUR NEW ELECTRIC LOOKS GOOD—AND YES, IT DOES ADD A "CLASSY" LOOK TO THE VUD. ONLY COMPLAINT IS THE VERY SMALLEST TYPE YOU USED (EG, THE LAST 1/4 OF NOLAN'S WYEP COMMENTS). . ."

THE ABOVE FROM **PHIL BOERMA**, AND BEFORE I CONTINUE WITH HIS REPORT, I'LL MENTION THAT I AM LEARNING MORE ABOUT THIS MACHINE. WHEN I DID LAST MONTH'S COLUMN THE MACHINE WAS IN NEED OF ADJUSTMENT (IT SUSTAINED SOME DAMAGE IN SHIPPING VIA GREYHOUND), AND NOW SEEMS TO BE PERFECT. ERRORS YOU FIND ARE MINE, NOT BECAUSE OF THE MACHINE NOT WORKING CORRECTLY. THIS PAGE HAS BEEN TYPED ON AN UNUSUAL FONT CALLED "COPPERPLATE 16-POINT DOUBLE-CASE." IT CALLS FOR A DIFFERENT SPACING CODE, AS THE SMALL LETTERS OCCUPY DIFFERENT SPACINGS THAN ANY OF MY OTHER FONTS; IT WOULD NOT WORK PROPERLY ON MY ORIGINAL COMPOSER. I'LL CONTINUE PHIL'S REPORT: An AM daytimer which is granted an FM under Docket 80-90 will not have to turn in his AM license after three years. . . he can SELL the AM facilities to someone else. Meaning that there will then be a new owner for the AM daytimer, faced with all the problems the old owner had, plus the new FM competition (the former owner of the AM daytimer!). I suspect that if the FCC grants a large number of FMs to current AM daytimers, in five years or so we will see a new crop of AM daytimer owners whining about how bad they have it, and wanting to operate with full power in the middle of the night. You and I know the real reason so many daytimers are running red ink, however: it's not the limitations on hours of broadcasting, but rather the fact that AM is dead as a mass-appeal medium; added to the fact that many (small-market) AM station owners are complete cretins anyway when it comes to creative, useful programming. Locally, WBLV #90.3 Twin Lake MI is 24 hours, six days a week (silent Monday mornings midnight to 6 a.m.) They carry the overnight service from American Public Radio (classical/eclectic weeknights, jazz weekends). . . . WGVC-FM #88.5 is now operating noon to 1 a.m. seven days a week WICE 88.1 Wyoming, owned by the school board there, has drastically cut its hours. Now operating only six hours a day, and not at all on Sundays. A good target for shared time? . . . WEHB is back to 24 hours (on 89.9, Grand Rapids), and the Holland 89.9 (WTHS) is not yet on. No indication as to when WTHS will come on. WEHB is still mono!

BILL COLEMAN SENT ME TAPES OF THE RAY BRIEM ABC TALK SHOW OF 12-13-84 WHICH I HAVE NOT HAD TIME TO LISTEN TO, BUT I AM SURE THEY WILL BE INTERESTING—ON THE SUBJECT OF DX WITH DR. RICHARD WOOD AND OTHERS. "I WAS LOOKING TO SEE ALSO IF YOU HAD A NEW ADDRESS IN YOUR FCC NEWS COLUMN, BUT DIDN'T, GUESS YOU HAVEN'T SOLD YET." [WE DID, BILL, AND IT'S A HECTIC TIME; THIS COLUMN-TYPING IS EVEN BEING DONE AT THE LAST MINUTE AS A RESULT.]

A LISTENER IN THE NY AREA WHO TUNES IN WMNR #88.1 MONROE CT NOTES THAT THEY ARE MORE THAN 600 WATTS H, AS SHOWN IN MY LATEST EDITION FM ATLAS. IT HAS SINCE GONE UP TO 11 KW, AS WMNR'S MANAGER WAS QUICK TO POINT OUT TO ME SEVERAL MONTHS AGO.

HAVING EXHAUSTED ALL COURT REMEDIES, COMPETITORS TO WFTW-FM CAN ONLY SIT BACK AND WATCH THAT STATION GO UP TO 100,000 WATTS ON 96.5, WITH A MOVE SOON EXPECTED FOR THEM FROM 99.3. THE NEW FACILITIES WILL ENABLE WFTW-FM TO REACH FROM BEYOND PANAMA CITY TO THE EAST, TO MOBILE TO THE WEST AND AS FAR NORTH AS MONTGOMERY AL, ACCORDING TO STATION PERSONNEL QUOTED IN AN ARTICLE LARRY FUSS SENT. IT APPEARED IN THE PLAYGROUND DAILY NEWS IN FORT WALTON BEACH FL.

WFTW-FM HAS A PERMIT FOR 600', 100,000 HORIZONTAL - AND VERTICAL.

In news of the Toronto area, **Stephen Tuura** says that CKLN 88.1 wants up to 10 kw and stereo on the revamped CJRT transmitter from 1949, but remains downtown on its 410' Ryerson campus tower. "This is the cheapest way to get more power, and a CN tower 88.1 is inadvisable because of interference to TV channel 6. . . CFMX 103.1 Cobourg wants 102.9 for a classical affiliate on the CN tower, instead of that frequency going to Hamilton's CKOC. I remember CJSH FM in the early and mid-50s. This would give Toronto another FM frequency, and the station would serve Hamilton and the Niagara area as well. Some interesting reception from both stations would develop around Oshawa, Ont. 94.9, CKQT wants to prevent somebody else from getting a beautiful music station in Toronto on 97.3 by moving its transmitter to the CN tower for another Toronto station. It has such a format now with some mixed category as well. CJUT 89.5 gets the licence for 20 kw from the CN tower. The educational variety format would sign on in 1986. [I've seen nothing official on this—b.e.]

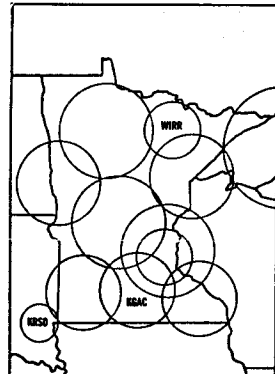
"97.3 in Toronto should be decided by Sept. 1985 and the station, whoever gets it, could sign on in 1986. CFGM in Richmond Hill got a frequency at last for a religious station in the Toronto area. This is 103.7, barely possible with Erie like CKFM on 99.9 and the other way it is Ithaca 97.3. But not on the CN tower as the antenna will be inland on a hill in Aurora, Ont. and the power no more than 20 kw to reduce interference. [I believe he means Erie and Ithaca on 103.7, causing potential short-spacing problems; again, I've heard nothing official on this one.]

"Thus Toronto, a most major city, gets enough local FM at last. The few existing stations have made up for variety by high quality programs. . . CFBQ in Parry Sound wants to switch to another frequency with more power and applied for a separate FM licence due to new ownership. The CBC wants a Muskoka AM network rebroadcaster on FM at Lancelot, Ont." And he heard that "somebody in Buffalo has apparently applied for a major commercial FM licence on 101.1, the last one there, unless somebody on the Niagara frontier wants 3,000 watts on 104.9, which is reserved for the Canadian side. The applicant is not WKBW. [I am not aware of 101.1 being open in the Buffalo area, even under Docket 80-90; it could be an allocations' proposal—b.e.]

ROBERT BAKER

SENT NEWS ABOUT HAPPENINGS AT Minnesota Public Radio, with station KGAC #90.5 St. Peter on the air, and WIRR #90.9 Virginia about to start. KRSD #88.1 Sioux Falls SD is on the air (see "stereo" news this month); the parent station of KGAC is KLSE #91.7 Rushford MN (serving Rochester). Augustana College in Sioux Falls helps support KRSD with studio space, and their college radio station shares KRSD's antenna. Likewise, the article mentions the problems KGAC had in going on the air, and it found a site on a piece of farm land five miles northwest of North Mantato in rural Nicollet County. The article mentioned that a local commercial FM shares KGAC's tower and transmitter building. I think the local station is KDOG 96.7, also new on the air. Interference to people's TV reception is mentioned, with the blame placed on the use of booster-amplifiers and the fact that most TV stations they try to watch are in the Twin Cities, 75 miles away. KGAC manager John Gaddo has been spending most of his workdays responding to interference complaints. "I feel we've got a handle on it now," he says.

Correspondent **Jim Korn** picks apart the geographic coordinates for the World Trade Center and the Empire State Building in New York city. My May reportage of those figures was correct, so far as the FCC/NTIS microfiche goes. He devised a formula for converting minutes of longitude to statute miles, and slunking in that formula to the figures I gave produced a difference of 23.9 statute miles between the locations of the two buildings. "But just by laying a ruler across a city map it looks like the World Trade Center is on the order of 1.5 miles west of the Empire State Building; certainly nothing approaching 24 miles." So I checked with the head of the geography department



of the local college, and he agreed with Jim. Jim's formula appears to be correct; it must be the microfiches that are in error, and probably one station had an error on its application and all the stations on that particular building copied the same application, error and all. The geographer, however, calculated the difference in location between the two buildings as 2.86 miles. So the controversy about New York's FM transmitter locations continues, making it perhaps the top story of the year in this column. On another subject Jim says:

"On page 31 of the November, 1984 VUD you reprinted **Frank Aden's** comment that ' . . . all of the Idaho FM stations reported being stereo'. That may be true, but in July, 1984, I visited KWEI-AM-FM in Weiser, and at that time they were using an old Gates transmitter for their FM which had never been multiplexed. They had no stereo capability despite the fact that their afternoon and evening programming was album-oriented-rock." [If anyone wants to double-check that for the KWEI-FM's telephone number is (208) 549-0886—b.e.] . . . "I do wish . . . in future editions that you'd go back to the slick, heavier cover as was used for the seventh and eighth editions, rather than the lighter one that was used on the ninth edition. My own FM Atlas spends a lot of time traveling with me in my car, and the book seemed to wear better with that thicker cover."

Larry Fuss again, and he clarifies the issue about the Class C in Kodiak AK (not being legal in the lower 48) from the May VUD. "There are quite a few grandfathered Class C's running real low power (WRFS-FM in Alexander City AL is 4600 watts at 240 feet). You can't do that anymore though. By the way KJZZ 101.1 Kodiak is officially a C2 on the FCC database. In Florida, neither WZNE Clearwater or WRMP Palm Beach are directional (97.9). WBUS 96.7 Newnan GA has been dark (silent?) for over a month. New tower being built. WLLT in Fairfield OH—c.p. is for 51 kw at 640 feet. Your guess was close." He sent along a list of vacant FM channels, much like that which was published last month, and a statement from the FCC concerning the random selection of FM channels under docket 80-90. Thus, the FCC will select applications for channel 243, 96.5 first, wherever they appear in the country on the table of allocations. The Commission will announce when window application filing periods will be held and the time periods when you can file. Early summer is when the first filings are expected to begin. If you wanna file for one of these stations, you might want to engage the services of Larry and his firm at PO Box 3976, Jackson GA 30233.

The ABC-Capital Cities merger will result in the sales of FM stations as follows. Capital Cities: KZLA Los Angeles, WPAT-FM Paterson NJ, ABC: KTCS Denton-Dallas, KSRR Houston, WRIF Detroit, WPLJ New York, KLOS Los Angeles, WLS-FM Chicago. This information from an article sent by W. R. McIntosh. In the South, WOIC AM Meridian MS is supplying the programming to WSLY 99.3 York-Livingston AL from 6:30 p.m. until 6 a. m. the following day, using the "WSLY" call letters only on top of the hour. So if you hear "WOIC" mentioned on 99.3 at night, it's WSLY you are hearing—confusing?

On the SCA front, CBS has leased the 57 kHz SCA to American Diversified Capital Corp. for paging on seven of its FM stations. Deal does not include five additional FM stations CBS is buying from Taft Broadcasting. So watch for more SCA activity on 57 kHz besides ARI. Some other format information I had buried, and I don't know the sources: AZ Flagstaff KNAU #88.7 c, not c; CA Fresno KKNV 102.7 m (all love songs); "and an asinine 'FM-103' unid (strict). Haven't they ever heard of digital tuning?" I just found the source for the preceding, **John Jefferson**, who also notes KARZ 106.1 Burney expected on by now, light rock. He notes an error in the 4-85 VUD in which I moved KSLP San Luis Obispo to 88.5. It belongs on 88.3. And, in FM tuners, he prefers the Mac MR80 or even his ancient AJ15 for selectivity over the NAD, which "was mentioned as best for under \$3,000. In his location "the rare open channels are all doubly adjacent to locals and essentially unusable for tropa and MS."

CONTRIBUTORS

Robert Baker, Humboldt IA; Jack Belck, Knoxville TN; P. L. Boerma, Spring Lake MI; Roger Brown, M.D., Rancho Palos Verdes CA; Mike Bugaj, Enfield CT; Don Coco, Kings Beach CA; Bill Coleman, Rocky Mount NC; Tom Cornell, Fremont IN; Mike Dalton, Clearwater FL (who wants to rejoin the WTFDA); Vernon Eaton, Benton AR; Ted Fleischer, Louisville KY; Larry G. Fuss, Jackson GA; Bob Grove, Brassstown NC (who will be mentioning my electronics catalog and book in "Monitoring Times," now going out to 10,000 circulation); Chuck Gryn, Stockton NJ; Rodney Hughes, Vienna WV; J. M. Jefferson, Pleasanton AR; R. Scot Johns, Boise ID; Chuck Kaufman, Lebanon OH; Carl Kendziora, Pound Ridge NY; Jim Korn, San Francisco CA; Jim LaPlante, Woodland CA; Nick Lombardi, Atlanta GA; Eldon Sanders, Luoma, Fort Coquitlam, BC; W. R. McIntosh, Granada Hills CA; Lic. Daniela Garcia Nocetti, Mexico City MEXICO; Peter A. Nolan, Houston TX; Fred Nordquist, Clay NY; Jim Pizzi, Lovington NV; Richard and Franklin Reese, Jersey Shore PA; Christian Rigan, Chicago IL; Ralph Strobel, Muncie IN; Stephen Tuura, St. Catharines ON; Edward I. Warner, Franklin NC.

—and, sad to say, there's no room to quote from **Edelberg's 1948 article** c the future of FM, or to read from **Chaucer, 73, to all, Bruce**

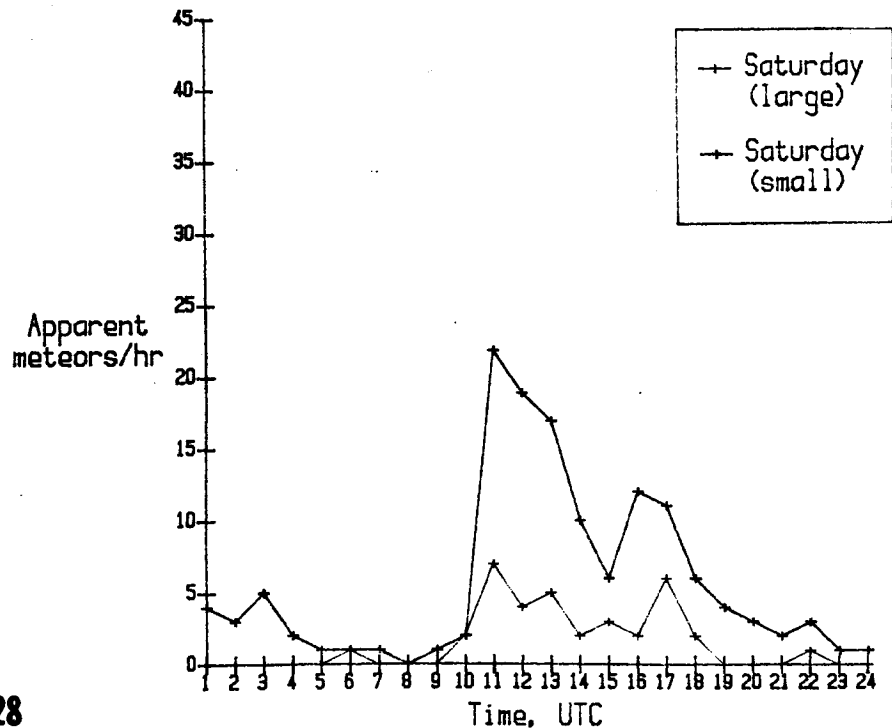
 IN SEARCH OF A
 METEOR SCATTER BEACON

IN SEARCH OF A METEOR SCATTER BEACON

I'm very interested in monitoring the VHF spectrum for the peaks of meteor showers. I want to more precisely determine when peaks occur so that future peak-time predictions will be more accurate. So far I have been monitoring different FM channels with so-so results. Enclosed are graphs of the recent Eta Aquarids shower as "seen" from upstate New York on 90.5 MHz. I'll discuss the setup in a moment. My request is this: Does anyone know of a good "beacon," one which is between 500-1500 miles from New York, is on the air 24 hours a day, which has no other co-channel occupants (or virtually none), and which runs at least a few thousand watts? The frequency isn't too important; anything between 40 and 200 MHz is probably going to serve the purpose. FM-band stations would be OK but there are too many of them - the strip-chart recorder can't tell which station is coming in. TV stations are just about as bad, and they're not on the air all the time. Does anyone have ANY suggestions?

Now, about the graphs. Here's the set-up: I have a 10-element Radio Shack FM-only antenna at 20'. It feeds a homebrew GaAsFET preamp, which drives a HeathKit FM receiver. I tap off the agc line and that voltage drives a 1"/hour chart recorder. Incoming meteors deflect the pen in proportion to both the ionization intensity and duration of the meteor trail; big deflections are often accompanied by DX on the 2-meter amateur band. In the graphs, "large" and "small" refer to different arbitrary cut-off levels on the original strip chart.

Eta Aquarids, May 4 & 5, 1985:
 Radio Reflections at 90.5 MHz



Eta Aquarids, May 4 & 5, 1985:
 Radio Reflections at 90.5 MHz

