

From The STAFF

W.T.F.D.A. Headquarters, P.O. Box 514, Buffalo, NY 14205

IT'S COMING NEXT YEAR...Have you been thinking about volunteering to be the host of WTFDA Convention 1986? You have until November 1st to make your bid. If you are interested, you MUST have a copy of the club's bid form, to be filled out and returned as soon as possible. We will not accept bids made by phone, and you must be a current member of WTFDA in order to host the convention. If more than one bid is received by November 1, the WTFDA membership will vote to decide the site of the 1986 convention. Hosting the WTFDA club convention requires a fair amount of planning, so if you're serious about this job, let us know now! Ideally, this task is best handled by more than one member, but in the recent past, has been run by some very capable individuals.

CONVENTION '85...Speaking of the convention, a report on this year's New Orleans gathering is being prepared by QSL editor Tom Yingling, and should appear in an upcoming VUD. If you missed New Orleans, you missed a great time. Let's see you next summer at WTFDA Convention '86--and you can help decide where it will take place.

ELENA SHOWS HER STUFF...The best place to be while Hurricane Elena crossed the Gulf Coast was about 1000 miles away, especially if you were interested in super tropo conditions. Counter-clockwise winds circulating around a storm system crossing the northern U.S. shoved Elena towards the east on August 30th and 31st, stalling movement of the superstorm in the Gulf. This helped a high pressure system build over the Northeastern U.S. and northern Midwest, and the resulting ducting was classic Hurricane-related tropo. Some of the duct activity was very bizarre; western New York DXers caught strong UHF signals from areas out to the 900-to-1000 mile range from Missouri and Kansas, while Indiana and Illinois observers were seeing little or nothing at the same time. Labor Day weekend found some very unusual tropo paths open on FM and TV throughout the Northeastern U.S.

OF INTEREST TO FM DXERS...Robert F. Scott, semiconductor editor for RADIO-ELECTRONICS has done an informative article on multipath distortion in the October issue. He explains how to reduce multipath by stagger and horizontal stacking antennas. "FM distortion is annoying," he says, "but there's no need to put up with one of the most common types..." Multipath, he claims, is "surprisingly easy to get rid of."

REMINDERS...We are still seeking a member to replace Dave Nieman sometime early in '86 as VHF-UHF DIGEST chief editor; if you feel you qualify, let us know. In addition to good layout skills, we'd like to have a person with a well-rounded DXing career (shortwave, BCB, amateur, etc.) as Editor-in-Chief...Those of you who write to H.Q. with a question to be answered: including a self-addressed stamped envelope (SASE) will get you a quicker reply.

ANARC UPDATE: 1985's convention review.....	3
FCC FM NEWS: Letters to the editor.....	4
TELEVISION NEWS: VHF-UHF swap update.....	7
VHF UTILITY DX: Editor's move puts him back in business.....	11
NORTHERN FM-DX: Canadians reluctance to ID frustrate many.....	12
TECHNICAL TOPICS: Transmitters, receivers team up to improve S/N.....	19
SOUTHERN FM-DX: "Jam Box" made DX-ready???	20
QSL CORNER: Ch 31 GA verifies Roy Barstows reception in MA.....	23
WESTERN TV-DX: Tropo improves as Fall closes in.....	24
PHOTO-NEWS: Year-end photo blitz begins.....	27
EASTERN TV-DX: He's hooked!!!.....	29

ANARC UPDATE

STEVEN P. SPRACHMAN
15 Berry Lane
Hicksville, N.Y. 11801
USA

THE 1985 ANARC CONVENTION - A REVIEW AND AN EDITORIAL

The 1985 ANARC Convention was a success. The convention, held in Milwaukee Wisc. attracted over 250 DX'ers of all interests. Many fine programs were presented. There was a discussion of the role of local clubs. Sessions were held on Medium Wave DX'ing, Computers and DX'ing, and Shortwave, Questions and Answers. Robert Kramer hosted a session on TV DX and Trop and E-skip propagation. I'm sure he plugged WTFDA as often as possible. There were also the standard programs on the agenda. The International Broadcasters Forum had representatives from 7 international radio stations. Those attending the Saturday night banquet heard Clayton Howard, the former host of HCJB's DX Party Line. He spoke of the past conventions he has attended. The evening was topped off by the presentation of the ANARC awards. This years winners were:

- North American DX'er- Larry Lundberg of Minnesota
- North American Specialty DX'er- Nick Patch of Victoria B.C.
- International DX'er- Ralph Perry of Malaysia
- International Broadcaster- Willis Conover of the VOA (He is supposed to be the most listened to person in the world. If any FM DJ's claim this, don't believe them.)

I am sorry that I could not attend this years event. I missed seeing all the people I met at past conventions and the WTFDA members who told me that they would be there. I greatly enjoy getting a chance to talk DX for three days straight. And this years convention probably had the most diverse program of any convention of the past few years.

ANARC Conventions must continue this diversity. A debate came out of this years convention on how future conventions should be held and who they should be for. One commentator, on a popular DX program on Radio Netherlands called the convention predictable and not for shortwave listeners. He made it sound as though the convention should only be for those interested in Shortwave. The convention should be a travelling showcase of all aspects of the hobby. No one band or interest should dominate. The convention needs geographic diversity so that different people can attend this showcase each year. ANARC must insure the conventions continue to grow. It must take a more active role in directing these conventions. ANARC may have to directly sponsor the convention. Or there may have to be rotating sponsorship among member clubs. That club specialty can be highlighted while keeping the standard programs. Or sponsorship may have to be opened up to Manufacturers, Radio Stations or others who are interested in the hobby, but not connected to ANARC. Something must be done so that the same people aren't the only ones to show up each year. The convention need not become "predictable".

Small specialty clubs like ours are able to hold a yearly convention while the large Shortwave clubs, with large memberships that would make a yearly convention a well attended event, do not. If they did, this would take some of the pressure off of the ANARC convention as being a gathering of Shortwave DX'ers and listeners. A new group is forming in Colorado called the Rocky Mountain Radio Listeners. According to a letter from the group's spokesman, Wayne Heinen, RMRL is a NON club-no dues, no rules, just friendly informal get-togethers. They plan to send a newsletter to keep members informed of all get-togethers. The club is aimed primarily at shortwave listeners and DX'ers, it would be advantageous for all DX'ers within driving distance of metro Denver to contact this group and find out what they are all about. For more information, send a SASE to either Wayne Heinen, 4131 S. Andes Way, Aurora CO 80013, or Rodney J. Johnson Jr., 1265 Bowring St. Apt 408, Denver CO 80218, USA. Tell them you heard about them from WTFDA.

That's it for now. Best of DX during Indian Summer,

73's
Steve P Sprachman

Worldwide TV-FM DX Association



Ken Roberts, who re-created Pasadena-based KROQ.

being absorbed by video and his computers.

ANOTHER ARTICLE HE SENT MADE NOTE OF THE FACT THAT THE FCC'S WOMEN'S PREFERENCE RULE HAS ENDED, SO STATED A FEDERAL APPEALS COURT. THE CASE INVOLVED ST. SIMON'S ISLAND GA. LATELY, MANY APPLICATIONS FOR NEW FM STATIONS WERE FILED BY WOMEN, IN NAME ONLY AT LEAST. NOW, UNLESS THE FCC CHOOSES TO APPEAL THE VERDICT, FEMININE APPLICANTS WILL HAVE NO EDGE OVER THEIR MALE COUNTERPARTS.

Merger of the Detroit News and the Gannett Co. would most likely place stations WWJ (AM) and WJOL 97.1 FM on the sales block, according to an article sent by Paul L. Gaines. Gannett owns WCZY-AM-FM Detroit, which may also have to be sold. Paul was perceptive to send on word from bumper stickers he has seen what the formats and stereo indications are of some stations. He's seen some odd ones—"KCLT FM 105 in stereo" on a car with an AR license, and "WADD 97 FM" with an AL license. So now is born a new aspect of the hobby... Watch your parking lots and report station news from the bumper stickers you see! And I could fill up this page with pictures of the "Country Favorites"—the jocks of WWWW 106.7 Detroit, which Paul sent. Or are the "Country Favorites" the music and not the people? The people are Chuck Santoni, shown wearing a western hat, Kathy O'Neill, with wild, dark hair; bearded Ken Morss, smiling Buddy Blake, sportcoat wearin' John K., ... you get the picture, right?

Rod O'Connor sent a radio page from the Anchorage News, and it lists KATB 89.3 on the air. "However, I was in Anchorage last week, and did not notice it on the dial, and I plan on going there again next week, and will try to check again." From AK to AL, Keith Pugh: "As for format data talked about in the August VUD, I don't think it's out-of-date. I agree with you that it is 'precise' and there are p stations around."

Pat Durkin sent an article on how Minneapolis' KTCZ 97.1 "The Cities" has taken off, at least in listener acclaim, if not in ratings. It is, however, in the top 10 of Twin Cities' radio, with Bobby Christian, 34, program director largely responsible. Article concludes "There is no question that the station has broken new ground in a radio market legendary for its fatigue. Yet in the course of going outside the traditional parameters of local radio, Cities 97 has so narrowly defined its mission and sound that its ability to grow musically could be limited." Pat has been enjoying the trope that has plagued the Midwest lately!

New translators in the Houston area are alluded to in an article Pete Nolan sent (see new stations granted above), with an ERP of 54 watts in North Houston at 104.9, and startup could be this month. It will try to carry commercials on the translators alone, on "105-FM." They are only contemplating adding a translator to west Harris County, according to the article, but you'll see they hold a grant for two translators, so I am sure they are actively seeking ways to enhance the anemic Class A coverage of a station trying to compete with Class Cs like KODA 99.1. John Ebelin sent an article on a proposed downtown FM broadcast tower that would rival the CN Tower in Toronto for height. This would enable Twin Cities' stations to become full Class C at 300 meters above average terrain. The suburb of Shoreview wants the tall towers removed, and this is seen as a solution. Other metro areas are too close to airports to work. Oh yes, television might be included in the plan, but the article does not say. Wouldn't that be a twist—tall towers built mainly for FM, but including all the area's TV masts as a bonus? Joel Hermann visited the Rock Island area and says of WLUV-FM 96.7 Loves Park—it is "ks.", actually "h" for "hodge-podge" would be more accurate. They seem to be k during the daytime, but here's what I heard one evening: 5-5:30 swap shop, 5:30-6:30 Spanish, 6:30-7 religion, 7-8 polkas, 8-12 mid. soul. There was also a strange buzz occasionally under their programming—FM only.

AM sounded ok (it's all simulcast). The only thing consistent I heard on WLUV-FM was their quality, which was extremely low—probably the worst radio station I've heard anywhere. . . . KAYL Storm Lake IA continues to creak along—sales are down somewhat. FM continues to contribute very little to revenue. We need to change FM to 'fm' but owners won't so FM will continue to be a loser. AM quite successful. KFTX "FM" — k — Fort Dodge SMN used overnight, weekends. Shoestring operation, doesn't even have news wire. I might have bought Sony's AM stereo receiver when I was in Chicago, but no one seems to carry it, yet all the major AMs (and 1 or 2 minors) in Chicago are \$. . . Glenn Hauser ran a series produced by KOSU on his World of Radio program about a couple of religious outfits selling 'instant' FM translators. I guess they're not technically translators but sounds like they basically relay satellite stuff on low-power and non-commercial outlets. Have you seen the September 1985 "Popular Communications"? Write-up on one-person WHRC 92.1 Port Henry NY. Shades of Simon Geller! (Whatever happened to his station?) Finally, Joel asks: "Is this legal: KHAK-AM IDs as Cedar Rapids when running separate. When simulcast the ID is KHAK AM and FM Cedar Rapids-Iowa City. Don't they always have to give the same city of license? Or isn't the second city considered city of license any more? KHAK-AM is directional and can't be heard in Iowa City!" [Stations are now free to add second cities and vary them—see Central City NE above under "Stereo"; but Joel raises a good point about AM-FM simulcasting where one station cannot be heard in all the cities mentioned on the ID.] Nick Lombardi: I found Larry Fuss' comments in the September VUD interesting, especially since his own WSB-FM recently started emphasizing '98.5 on a digital radio'. . . Now that you have reduced your proposed SCA data categories to three (X, Y, Z) and explained what each one sounds like, I am somewhat less hostile to your 'breakdown' plan. Frequency shift (machine gun) data has a quite distinctive sound, as does telemetry. With a little practice, most avid SCA buffs should be able to recognize the various types. John M. Sulak sent an article, "Compatible Stereo Format Quadruples Reception Area" from *Electronic Engineering Times*, July 15, 1985. It would use another subcarrier in defining a more precise stereo signal, but would require new stereo receivers to take advantage of the technology (to pick up in stereo). John Combs saw on a storefront in Gainesville FL, "WONE 91.7 FM"—maybe a cable station? [Yes, and probably different from the WONE 97.5 Akron coverage map which may be printed in this issue.]

Canada help needed! My data lists are totally confused regarding CKUJ. I show those calls used on 90.1 at Kuujuaq, and on 89.9 at Kuujuaarripiq. And I heard from Milwaukee's Ferdie Dombrowski, one of the fathers of this club, who is still single, and the owner of a VCR. He enjoys MI DX when it comes over the lake to his indoor UHF antenna, which also suffices as a handkerchief-drier.

CONTRIBUTORS THIS MONTH: P. L. Boersma, Spring Lake MI; John F. Combs, Jacksonville FL; F. S. Dombrowski, Jr., Milwaukee WI; Patrick Durkin, Jr., Woodbury MN; John Ebeling, Bloomington MN; Richard T. Eddie, St. Louis MO; Paul L. Gaines, Detroit MI; Howard M. Ginsberg, General Manager, WXXX South Burlington VT; Joel Hermann, Storm Lake IA; Hank Holbrook, Chevy Chase MD; Charles Hunziker, Bridgeport CT; Tom Kigin, St. Paul MN (who says KRSD 88.1 Sioux Falls does not carry the talking book for the blind, because of an agreement that SD Public Radio [KCSO 90.9] has the SCA); Nick Lombardi, Atlanta GA; W. R. McIntosh, Granada Hills CA; Peter Nolan and his "MSJ" newsletter, Houston TX; Rod O'Connor, Kodiak AK; Craig W. Pattillo, Portland OR; John Patton, KSOR, Ashland OR; Keith Pugh, New Hope AL; Donald L. Staats, Parkersburg WV; John M. Sulak, Altamonte Springs FL; John Sunier, Kentfield CA; Peter Taylor, San Francisco CA. "Phantom SCAs" are mentioned in an "SCA: Radio Subcarrier Report" article on many 92 kHz said to be Telemet America data carriers. However, in surveying stations, none were discovered, and Telemet's calls were unanswered. The paper covers the Tampa market, giving SCS data.

73, *Boersma*

TELEVISION NEWS

Bill Fabber, editor
336 Atlantic Street
Bridgeport, N.J., 08302

FORUM

Paul Gaines sent a schedule of WZDX, ch. 54 in Huntsville, AL, which went on the air a few months ago. WZDX is an independent station, with children's programming in the morning and afternoon hours. Religious programs in the late morning, but hardly any on Sunday. Sunday is mostly syndicated programs and movies. Five movies on Saturday, with syndicated programs the rest of the day. Movies weeknights and afternoons. Most of the syndicated programs are the currently-produced independent type, with some network leftovers. Paul heard a radio station announcing such things as "for programs on 18-Elmira see 3-WSTM," and so on, and wonders if the list he copied down was a list of translators, especially since some of the city and channel references coincide with construction permits for broadcast stations. It happens that 18 in Elmira is a satellite broadcast station, WETM. The others are all translators and are listed in the 1984 Translator-LPTV list. 50-Watertown and 33-Utica, however, are on assigned channels and will be forced off the air once the broadcast stations sign on.

I have found it interesting myself to tune in on some of those AM stations within a few hundred mile radius to find out what's going on with their local television stations, in case I ever get them in.

Several questions Paul asks: Did Hazard, KY ch. 35 WKHA move its TL? Not that I know of, but I have an unconfirmed report of WKYH-57 given permission to change its TL. What about WKPI-22 in Pikeville? I have no record of plans to change its TL. Paul logged a ch. 30 NBC one morning, but no ID. The only NBC-30 stations on record are in CT and MS. Does anybody know of any new NBC station on ch. 30?

Larry Fuss sent a data base copy of the Tennessee area to explain the mixup around Cookeville and Crossville. The CP cancelled was for WKWR-TV, ch. 28 in Cookeville, owned by Joseph Patrick Williams. Since that cancellation, there have been other applications for the channel, including Gerald R. Roberts. The CP for WHTV-TV, Crossville, TN, has not (N-O-T) been cancelled, contrary to prior reports. It is still on the air, and has a construction permit to move to channel 20. I don't know if it has moved yet.

An article from the Florida Trend, also sent in by Larry, mentions some of the television sales going on in that state along with a peek at Miami's newest television station. WBFS, channel 33 in Miami, calls itself "Florida's Super Station." Channel 33 spent big bucks to buy highly rated network reruns...also purchased top talent, raiding the established independent, WCIX, for a salesman and a promotion director. "And Channel 33 earned the prize as Miami's top station one Sunday with a mix of reruns and classic movies." Not bad for

a brand new UHF in a city with VHF network affiliates, and other indie on VHF. Speaking of WTOG, ch. 44 in St. Petersburg, owned by Hubbard Broadcasting. "In a deal initialized in December, WTOG would pay \$25 million just to switch frequencies with a PBS station that broadcasts on Channel 3. Hubbard Broadcasting would pay \$10 million to \$25 million more to refit both stations and underwrite an advertising campaign for the PBS outlet. But before WTOG becomes Channel 3, Hubbard may have to beat down legal challenges from a competing independent and from Channel 10, an ABC affiliate that figures it, too, could improve its signal by broadcasting from channel 3." Needless to say, if WTOG does move to channel 3, it could compete with WTSP-10 for ABC affiliation in the future.

W.R. McIntosh sent an article from the Los Angeles Times, 8/3/85, about French television. "The Socialist government of President Francois Mitterand has announced it will break the traditional government monopoly on television by allowing two channels on the air in a few months." "...the Mitterand Cabinet has approved a two-phase program for private television. First, the Cabinet member (Georges Fillioud) said, two national channels 'of a commercial character' will be created in a few months, probably before the end of the year. One will be a video music channel appealing to young people; the other...a national channel of general interest." "...the government plans to license perhaps 40 local TV stations throughout the country. This, however, presumably depends on the launch of a special communications satellite, slated about a year from now." "The government's latest announcement amounted to a request for outsiders to make their proposals for the two new television channels. It was not clear how much independence the new general channel would have in its presentation of news." "Besides the three government-owned channels, there is a pay-TV channel that offers mostly movies and sports events."

From Jeff Kadet, "KSAS-24 is on the air (at 3am) asking for reception reports and telling people what 'UHF' is." KSAS is in Wichita, Kansas. "WTJR-16 (Quincy, IL -wbf) was noted testing way back on August 6, but they haven't been seen since. It was definitely them with a 'Jesus Loves You' superimposed on their CB TP. Just what the Midwest needs, another religious station." Jeff, let me know if there is sufficient ABC coverage in that area. This might be a future candidate for affiliation. "On the 12th (August -wif) I got chs. 65 and 68 in NJ for a new state. WJAT IDed as Monmouth, a sizable distance from Vineland—what gives?"

Jeff asks about translators. W51AB is in Flintstone, GA. 853 watts ERP. Don't know ant. height. "I saw them on the 21st. They were very weak but it was definitely them with a CA Public TV Begathon." Can't help you on the other translator information.

Bob Langridge visited the studios of new television station KLJB, ch. 18 in Davenport, IA, which went on the air 7/28/85. A promotional item reads, "KLJB-TV, Channel Eighteen... 'Free and independent' television for the Quad Cities, and about to become another of the big success stories in the fast-growing independent television industry." "Our 3,000,000 watts of power, plus our cable carriers, including Cox Cable channel 7 with 60,000 subscribers, Group W channel 18 with 46,000 subscribers, and Heritage Cable channel 6 with 17,000 subscribers, to name a few, achieves (sic) parity with the three local network affiliates because of the high percentage... of cable penetration in the market. Our programming is a refreshing alternative to network viewing. It's programming with proven appeal. From classics of television's 'Golden Years,' to contemporary hits like 'The Rockford Files and Hawaii Five-O.' We bring a new look with sitcoms and children's programs in place of the news, and academy-award-winning movies during network prime time hours." Or, as one member recently put it, "same old UHF rot."

George Mileon sent in an article from the 8/22/85 Boston Globe about the recent WGBH "Bogathon." This article could also apply to other educational stations. "WGBH... executives are... concerned because the August pledge month period is winding down, weakly - the televised appeal ends next Sunday - with the lowest viewer response since the late 1970's." "The 1985 summer solicitation follows two years of successful 'Pledge-Free August,' when WGBH promised viewers not to nag them on the air or otherwise if sufficient funds were promised voluntarily to meet fiscal commitments." "Other reasons for the dramatic slow-down... include: solicitation while viewers are on vacation; the preponderance of encore programming...; the increase in remote control devices which allow viewers to watch the shows, then switch to another channel during the intermission pledge periods each night."

Bill Nollman sent an article from the 8/14 Norwich Bulletin, about proposed station WLCT, ch. 26 in New London. "A local television service, catering directly to southeastern Connecticut, will be available by the year's end. A decision last night by the Montville Zoning and Planning Commission to grant a special permit, puts to a close four years of studies and plans to begin a local commercial television station, Channel 26. The approval will allow C&S Broadcasting Corp. to build a 1,200-foot television tower at the intersection of Routes 161 and 85." "Construction could begin immediately and should be completed by the end of the year... construction permit from the FCC expires Sept. 19 and cannot be renewed unless construction has begun." Bill adds, "Since few maps show the intersection... I took out a road map. The spot is exactly 9 1/2 miles SW of the intersection of Rts 2 and 395 (ex Rt 52). This can easily be found on any map. The spot is in the city of Montville near the town line of East Lyme." "...now Ch 25 - a great movie station from Boston will be swamped with CCI." Not quite. CCI stands for

co-channel interference. It will, however, suffer from ACI, or adjacent channel interference. I also want to comment that this article is one of the few that recognizes a difference between a license and a construction permit.

Which brings me to this letter by Leslie Price, enclosing an article from the 8/25 local paper. "TV STATION PLANNED FOR MOREHEAD CITY" Wow! What does that mean? Does it mean the station is about to go on the air? Does it mean somebody was granted a construction permit? Does it mean somebody applied for a construction permit? Does it mean there is even an available channel there? No none of the above. What happened is that Larry Fuss of Contemporary Communications applied to the FCC to add channel 8 to the table of assignments for Morehead City in North Carolina. Or, as the article put it, that the FCC "will open hearings to assign a license to broadcast on TV Channel 8 in Morehead City. Larry will most likely be interested in the last sentence of the article: "Contemporary Communications also holds a license for a TV station in Maryland which has not yet been put on the air." Just think, Larry! Now you don't have to apply for that license.

John Combs Finally got a typewriter that has the number 2 on it, just in time for him to begin his new column. He reports, "WTGS-28 Hardeeville SC is on today (8-16) testing with ID slide. They intend to be sort of a Savannah 'rim-shooter;' hence the earlier article I sent which referred to 'Channel 28 in Savannah.' Still no switch on WSAV-3 vs. WJCI-22. I would have expected it to take place on July 1st, if at all. Maybe it won't happen until the first of next year?"

Glenn Hauser writes, "Ron Schatz and I checked out the Florida Keys translator network... on an expedition down the keys... using his battery-powered portable TV set in the car. Those who have been straining to DX them will be interested to know that the Key Largo, Matecumbe, Marathon and Big Pine groups are indeed on the air, but not Key West (and this is confirmed in a local newspaper listing omitting the K.W. channels). The Matecumbe, Marathon, and Big Pine facilities are easily visible from the Overseas Highway.... Key Largo's is not on the main road, but about 4 miles N of the junction with US1 on county road 905. That's the off-air pickup site... as evidenced by the array of VHF receiving antennas above the UHF transmitting elements on the same tower. They all had very short range (on the portable monitor) and were quite directional toward the next one (i.e. SW or WSW)."

The 8/11 New York Times included an article, sent in by Eric Fader, about WTZA-TV, ch. 62 in Kingston, New York. "The Hudson River Valley, one of New York's most rapidly growing regions, is about to get its own commercial television station." "The station, WTZA-TV, Channel 62, will be a UHF outlet that... will provide news from the many separate communities... between Albany and New York City and other local programming plans are to begin broadcasting by late October. A five-million

watt transformer and an antenna are under construction atop Overlook Mountain in nearby Woodstock, and 22,500 square feet of television studios are being built in the downtown area here." "The station's powerful signal... should be strongest between the Catskill and Berkshire Mountains and from the Albany area to northern Westchester County." "But they say WTZA-TV would be the only general-interest commercial station in the valley." "Station WTZA-TV will be on the air 18 hours a day..." "We'll buy programming from the shelves, the syndicated programming of the last 20 years, to supplement the station's own material." "The news director... said the station would open news bureaus in Poughkeepsie and in the Newburgh-Middletown area as well as in Kingston. News of the valley emanating from Albany will (also be) covered." "The station would begin each day with a news and information program between 6 A.M. and 7 A.M. Also to be offered are a half-hour of national news at 6 P.M., a half-hour of local and regional news at 6:30 P.M. and a newscast at 10 P.M."

Fred McCormack sent an article from the 8/18 Fargo Forum, about ch. 15. "No longer KVNJ, the station is now KVRR-TV." "Channels 10 and 12 are KVRR's new full-power spinoff stations. They'll duplicate Channel 15's programming, with commercials and public service announcements tailored to their respective areas. Channel 10, based in Thief River Falls, Minn., serves northwest Minnesota and the Grand Forks, N.D.-East Grand Forks, Minn. area. Channel 12, based in Pembina, N.D., serves northeast North Dakota and southern Manitoba, Canada." "KVRR's new facilities are at 4007 9th Ave. N.W. in Fargo." "Effective in October, KVRR will use... equipment for 24-hour programming in stereo...." "What we're trying to do is mix the old with the new and put good old-fashioned family entertainment back into television - things people can sit down to watch with the whole family and not be afraid they have to plug little kids' ears." "Programming highlights include a minimum of 15 movies weekly and more than 30 holiday specials from Halloween to Jan. 1." "Children may watch cartoons Sunday mornings or kids' shows weekday afternoons; wrestling fans can tune in Saturday afternoons or late-night Saturday." "Sports programs include North Stars and Gopher games. Other programming includes news magazines, shows for teen-agers and sitcoms."

Fred writes, "You may have noticed that KVNJ was sold in recent months. It was sold by its original builders to a Minneapolis company who then sold 50% of it to another company in exchange for ownership of LPV's K18AI, Grand Rapids, MN; and K26AC, Bemidji, MN; and Construction Permits KFOH-TV, channel 10, Thief River Falls, MN; and KWBA, channel 12, Pembina, ND. Both of these permits have existed for years (since 4/82 and 7/81 respectively)." "KVNJ-TV had been operating on a rather brief schedule with sign-on around 1500 and sign-off before midnight. Since the sale, they have expanded their program schedule and have started a strong advertising campaign on radio and taxicabs. Their radio ads ask if

you remember channel 15, the station that no one could see. The ad goes on to say that they have installed a powerful new transmitter. It is about twice as powerful as their first, but I suspect they still have the lowest ERP of any full power UHF license in the nation. Do you agree? Almost! They were at 3.5 kw ERP, and have applied for 8 kw recently. But I did find a few other wonders. KDCD-TV, ch. 18 in Midland, TX, is 1.6 kw max/0.813 kw hor. But with its increase in power, there will be four more stations weaker: KIDZ-24 (Wichita, TX), WTUV-33 (Utica, NY), WTKV-33 (Valdosta, GA), and WEDY-65 (New Haven, CT).

Bruce Elving sent a few articles from various issues of the Current, a periodical for educational radio and television stations. One article describes ch. 35 in Philadelphia. "Channel 35 will join WHYY-TV, Philadelphia, and WNTT-TV, Trenton, in serving the area's public television audience when it takes to the waves this fall. Licensed (sic) to Independence Public Media of Philadelphia, the station plans a broadcast menu to complement the existing channels' schedules. It will be soliciting more work from independent producers than programs fed by PBS." "By and large, our programming will be for general audiences." "But the board, whose members include two Hispanics and one black, is giving considerable attention to developing programming for Philadelphia's minorities." "In 1983 IMPOB applied for the license (sic) after they learned it would otherwise go to an organization called The Faith That Pleases God Church Inc. - a Texas-based religious group." Good reason to apply for a CP. A vacant channel gathers dust until somebody else wants it, and all of a sudden you decide you want it too.

There have been occasional complaints that WHYY-12 has been insensitive to the general audience in its programming. On one occasion, a group of minorities objected to its lack of programming of interest to minorities, claiming that WHYY's diet of high-class cultural programming is geared toward the richer classes. In response, WHYY insisted that its high-class programming is meant for people of all races and cultures. The State of Delaware objected to the fact the WHYY neglects its home state in its programming. Their bitterness stems from the fact that WHYY, many years ago on Philadelphia channel 35, switched to Wilmington channel 12 (from UHF to VHF) on the condition that it would give special attention to Delaware. Yet it still transmits from Philadelphia, and caters only to higher tastes. In defense, WHYY claimed that it does indeed cater to the interests of Delaware. The example it gave was Sesame Street, arguing that the people of Delaware speak the same English as the other states. Honest!

Another article from the Current reports on the latest on the interference problem between channel 6 and educational FM stations. Several months ago, the FCC adopted a set of proposed rules to eliminate the problem, publishing that proposal in its Third Report and Order. Those proposals were unacceptable

to both channel 6 interests and educational FM interests. The article begins, "Representatives from public radio and major commercial channel 6 television interests have reached a compromise agreement on regulation of educational-FM signals' interference with reception of channel 6. A joint proposal for a rules package was submitted to the FCC May 28." "The rules in the third Report and Order issued by the FCC last fall were rejected for different reasons by both radio and television. At that time, representatives for both groups filed a joint motion for reconsideration, which the Commission subsequently approved. The FCC immediately announced a freeze on all new or modified ed-FM applications, pending new interference regulations." "The new joint proposal calls for the FCC to adopt receiver standards....And the broadcasters have also agreed to do a joint study of real interference. With respect to predicting interference, the parties have proposed modifying the conventional method to take into account such factors as terrain, population, use of filters and duplicate network service from another TV station." "An ed-FM applicant could avoid going through the interference prediction process by choosing a lower power....Also, they're always free to get an agreement with a channel 6 station. If they can get an agreement without going through the process, it would be encouraged."

Several articles sent in last month by Walter Patton are all related, and involve reactions to a proposal by the Canadian Radio-Television and Telecommunications Commission that will reshape Canada's broadcasting system by allowing regular television stations to put their signals on satellite and have them picked up and redistributed by cable companies across the nation. Toronto's multilingual station, CFMT, ch. 47, plans to expand into 14 other cities by September. Another contender for the "superstation," as the CRTC is calling it, is CITY-TV. But the existing networks CTV and CBS, are opposed to the idea, because it would lead to fierce bidding wars for American programs. Also opposed to the idea is Global TV, which had recently announced plans to become the nation's third network, competing directly with the other two. Global plans to expand its coverage to 24 cities by building new transmitters and expanding the coverage area on its existing transmitters. But the FCC seems to favor the superstation concept, its policy being that cable television is preferable to transmitter stations.

VHF-UHF CHANNEL SWAP UPDATE

Democrats in congress are upset about the FCC's proposal to allow VHF educational stations to sell their channels in exchange for huge sums of money. During a Senate Commerce Committee meeting, they tried to pass a ruling that would freeze noncommercial reservations on channel assignments. The Democrats want Congress to take immediate action, while the Republicans feel that the FCC should be given time to study the matter and adopt a policy before any action should be taken. Democrats in the House of Representatives are also

considering taking steps to block the FCC.

IN CONCLUSION

As you have noticed, this column doesn't contain the usual technical information related to applications and permits of television stations. That is because of the difficulty in researching this month's column. However, next month will contain two months worth of information in it.

This time of the year is usually the best for long-distance tropospheric DX in this part of the country, so be on the guard for some of those long hauls. There are lots of new stations on the air that weren't on last fall.

Those of you who are PBS fans are probably aware of some of the subtle methods used by commercial advertisers to advertise their products or services on educational stations. What some of you may not realize is the fact that many of your kiddie shows are half-hour long commercials with occasional breaks for other commercials. Specifically, I refer to such programs as Voltron, Masters of the Universe and G.I. Joe. The latest wave of commercial-cartoons deals with robots that change from one form to another. This began with the famous Transformers and Go-bots. Now there is a new wave of transformer toys following the success of Go-bots.

For example, there are the Sno-bots. Leave them around for a few minutes in a warm house and they transform into puddles of water. Then there are the Ferraro-bots. They transform from Diet Pepsi cans to Diet Coke cans in front of television cameras. No-bots transform into nothing. Slo-bots transform into congressmen.

Now they have cereals advertising toys, such as Rainbow Brite. Now they have G.I. Joe cereals. They fill you full of lead. Next will come the Transformer cereals. Leave them in a bowl full of milk for a half hour and watch what they transform into.

If your kids are like mine, watch out. They succeeded in transforming even the toys that weren't meant to be transformed. I won't say what they were transformed into, but they became a valuable addition to the city's sanitary landfill.

Just a few more notes. John Combs saw WTGS, ch. 28 in Hardeeville, SC, testing 8/16/85. It may be on the air by now. Last minute letter from Ed Frye contained an article that says that WTZA, ch. 62, plans to be on the air "the last weekend in October." The TZA stands for Tappan Zee to Albany.

I noticed in the Eastern North Carolina TV Guide that WRAL, ch. 5 in Raleigh, is now CBS, and WTVD, ch. 11 in Durham, is now ABC. A recent Canadian TV Guide, Maritime Provinces Edition, lists a CJBR, ch. 3 in Rimouski, Quebec. I think somebody has questioned that station some time ago.

One more note on the proposed channel swap with educational VHF stations: I noticed that Sesame Street is now teaching children how to count up to 68.

VHF UTILITY DX

Donald L. Blevins
3615 East Lombard
Baltimore, MD 21224
phone: 301-522-2089

This month's feature will announce the change of this editor's address once again. This time, however, the change should be a long term one as I have finally bought a house. Also you will note that my own loggings should be more extensive as I have installed an outside antenna for low band and high band, and I can at long last join all of you in actually logging some of the PSB DX.

I have been quite busy unpacking from the move, so I still might be missing some things. Anyone who has undergone such a change is to be sympathized with. My antenna set up now consists of a quarterwave ground plane for VHF High and a quarter wave dipole for VHF Low.

My only offerings at this time will be Bill Nollmans info which by the way was the only thing I could remember where I put. It has taken some time to unpack and reassemble my DX shack and there are some things yet to be put into place. I beg you for your indulgence.

Bill Nollman Box 184 RFD #1 Fitchville, CT 06334 reports

6/4/85

1800	KAW 628	46.50	Westerly, RI	Watch Hill Fire Dist
1807	WRX 703	46.50	West Haven, CT	Allington Fire Dist

6-6-85

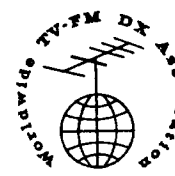
1813	unk	33.90	(poss) Arkansas	
1815	WQQ 360	33.90	Salem, CT	Salem Fire Dept
1816	KCH 245	46.18	Haddam, CT	Hadam Fire Dept

6-7-85

2013	????	39.46	Springfield, IL	Police Dept
2013	KSA 213	39.46	Springfield, IL	Illinois State
1816	KDE 621	39.46	Flora, IL	Police Depart
1823	KNC 661	39.46	Effingham, IL	Effingham County S.O.
1823	KSC 778	39.46	Toledo, IL	Cumberland County S.O.
1831	KSD 806	39.46	Newton, IL	Jasper County S.O.

6-8-85

1338	KTV 633	37.12	Monroe, MI	Monroe County S.O.
1645	KAA 522	42.12	Willow Springs, MD	Missouri Highway



NORTHERN FM-DX

OCT-1985 Phone (416) 489-8623 at 0800-2300 ELT (I'm in Toronto now)

Yep...until further notice I'll be in Toronto. There's a slight chance that I'll get a job somewhere else but who knows? Burnt River is just about over for the summer. Only a week to go; my summer employment contract is out and I'm taking a week's holidays before doing some serious job searching. I'll be gone from the River by Labor Day. Not much August Es, if any at all, and a nice start to Aug. Tropo that fizzled without any real extended supertropo, at least for me. The Perseids seemed hot but I largely ignored 'em.

FRANK MERRILL - P.O.B. 7207 - Toledo OH 43615 SAYS HE'S MOVING TO IL, SEE COMMENTS AT END.

MAY 1985

23 Es
1200 WSFP 90.1 FL Ft Myers prgm promo ID
1210 CH... 91.9 CUBA "Radio Rebelde de Habana"
Country #5, any info?...Help!!!
1214 WYD 107.7 FL MtDora "Joy108" Orlando ad
1215 WABA 107.3 FL StPetersburg
1220 WOJ 107.1 FL Lehigh Acres "107-OJ" pr
1223 WJIS 107.1 FL Key West local ad
1226 WJLY 106.7 FL Leesburg "Y-106, Orlando's
hot rockin' Y"
1230 WML 106.3 FL Sarasota lcl wx (86°)
1231 WHEW 101.9 FL Ft Myers
1237 WLOQ 103.1 FL Winter Park "LOQ"
1240 WJLE 105.9 FL DeLand WJLE Country 10
Countdown
1241 WRBQ 104.7 FL Tampa thru WIOT
1243 WFTY 104.5 FL AtlanticBeach TV-12 ad
1251 WLEQ 95.9 FL Bonita Springs "Q96" lcl ads
1256 WJLV 102.9 FL Jacksonville ID
1257 WJTV 105.1 FL Orlando "BJ-105" ad
1258 WTOR 105.1 FL CoralGables "Hot-105" ads
1303 WKTZ 96.1 FL Jacksonville ID b
1305 W... 88.1 FL Jacksonville lcl stuff
(I had WNCM on Es, it's them-saul)
1309 WCKS 101.1 FL Cocoa "CK-101" WCPX-6 ad
1315 WLYF 101.5 FL Miami c/WLQR "You're tuned
to FM 101, Life, WLYF"
1317 WSHE 103.5 FL FtLauderdale
1320 WSVE 92.7 FL Green Cove Springs "93WSVE" g
1322 WOVV 95.5 FtPierce Stuart(FL)ad
1325 WJAX 95.1 FL Jacksonville "The X" lcl ads
1327 WQYK 99.5 FL StPetersburg
1330 WQIK 99.1 FL Jacksonville "WQIK FM 99" k
1331 WJIV 96.9 FL Jacksonville "97 WJIV, playing
your favorites of yesterday and today"
1339 WDBO 92.3 FL Orlando WOFL-35 ad "K92" still
WDBO? (FM Atlas sez WKKA, it also lists WNCM...
Frank, I don't want to sound like a broken record
cause you probably have enough of them, but
you & other FM DXers should have a copy-saul)
1341 WHOO 96.5 FL Orlando "96FM, that's whoo"
1345 WPUZ 93.7 FL Ocala ad temp.
1352 WKGR 98.7 FL FtPierce r ID QTH
1355 WTKI 93.1 FL Miami
23 Tr
1400 WFPK 91.9 KY Louisville (forgot to log before)

12

Saul Chernos
79 Ridge Drive
Toronto Ontario
M4T1B6

JUNE 7 Es cont'd

1720 CBAF 26 88.5 NB Moncton
1722 CBCT 96.9 PE Charlottetown
1735 CBIB 90.1 NS BayStLawrence EE CBC mono
85 watts (sure it wasn't Millertown NF?-saul)
8 Tr
2343 WJJC 89.1 IL MtCarmel PSA & promo
2356 KPKB 107.5 AR Mountain Home bluegrass mx
& ID; not in Atlas (so you DO have a copy-sc)
9 Tr
0012 WKKG 101.5 IN Columbus thru WLQR (wanted)
0035 KZRO 104.3 AR Marshall "Southern Ozark
Country" k
0123 KFIN 107.9 AR Jonesboro "N.E.AR's best
country, KFIN" jingle o/WTPI.
0144 KJAJ 99.3 MO Gordenville
0148 WIKY 104.1 IN Evansville
0200 KYMO 98.9 MO Kennett legal ID k (satellite
prgm)
0204 WZZQ 107.5 IN Terre Haute "107 WZZQ, T.H.,
the valley's best, song after song."
10 Es
1723 WKKS 92.1 TX Bay City "WKKS wx centre"
1736 KRLT 84.5 TX Harlingen
1738 KSBJ 98.1 TX Humble "88KSBJ" g
1800 KBNV 91.9 TX Corpus Christi SS-EE ID, SS
1803 KLIJ 89.5 TX Robstown legal ID
1814 MUF at 102.9 briefly
1828 KTFP 92.1 TX Bridge City ads ID
1834 KJAE 92.7 LA Leesville
14 Es
1311 KESS 94.1 TX FtWorth "Tortilla Luna...
...para comunicad Hispafola del metroplex"
18 Tr
0300 WKFP 99.3 KY Fulton ID-jingle //WENKAM TN
0311 WKJQ 99.5 KY Henderson "Evansville's
music FM, KQ-99"
0334 WWEZ 92.5 OH Cincinnati o/WMHE, my strong-
est local; now have DX o/ all my locals. A
relog, as WMHE used to s-off.
19 Es
2036 KROE 94.9 WY Sheridan
20 Es
1537 KWYK 94.9 NM Aztec
1542 KRAN 92.9 NM Farmington
23 Es
1102 KGCH 93.1 MT Sidney
1143 CBKP 97.7 SA Regina FF CBC
1147 GIZL 98.9 SA Regina "Zed-99" SA PSA
1342 KLBJ 93.7 TX Austin
24 Es (sorry, my canada list in Tor.; will look)
1714 CB... 88.7 ?? EE mono to East Coast
1725 C... 94.9 FF independent sounded/CJBT
(Maybe Carleton PQ?-saul)
1733 CFDM 92.7 PQ Cap aux Meules
1736 WQDY 92.7 ME Calais
1738 CBSI 98.1 PQ SeptIles FF CBC mono
1740 CBAF 25 107.5 NS Mulgrave
1740 CBHE 106.7 NS Mulgrave EE CBC mono →

Merrill, cont'd

JUNE 24 Es cont'd

1742 CJYC 98.9 NB St John "C98" QTH wx
1743 CBZA 103.7 NB Grand Manan
1744 CKO9 103.5 NS Halifax (You sure? They
must be very new-to-air, delayed by \$
problems, \$ meaning money not \$tereo-sc)
1750 CBHY 92.1 NS Yarmouth
1752 WMMJ 95.7 ME Ellsworth
1804 C... 93.7 EE CBC mono
28 Es
1141 KTCL 93.3 CO FtCollins
1144 KBVL 94.7 CO Boulder
1203 KENW 89.5 NM Portales
30 Es
1344 WTKI 93.1 FL Miami
1344 WMCU 89.7 FL Miami

JULY 1985

2 Es

1234 KERA 90.1 TX Dallas
1241 KSEY 94.3 TX Seymour "Casey Country"
1243 KOFM 104.1 OK Oklahoma City
1244 KRPT 103.7 OK Anadarko "The best of
the country, KRPT" k
1300 KSNY 101.7 TX Snyder TSNrx ID
1301 KORQ 100.7 TX Abilene
1301 KATT 100.5 OK Oklahoma City

opening was only about 2 hrs! June 7 Es covered most time, but much of the time Es was below FM in MUF. May 23 best day in several years, stable-strong signals, even a 105.5 unID poking thru WMMW, 4 miles away. WHERE IS THE CUBAN, their power? While they're pesty on AM I never expected one on FM!
THIS SHOULD BE MY FINAL OHIO REPORT, as I'm moving to Macomb IL. Not only a DXers paradise but a darn nice town. Ahh, gotta start all over again. If I can resolve unIDs in this rep't my ALL TIME TOTALS (combining 1960s MI DX w/ Toledo OH) would be 1663, from 41 states & DC, 9 Canadian provinces & 5 countries. In OH, in 1970s-1980s, TOTALS 1538 from 39 states (DE & NJ were heard in MI via Au & Tr but not in OH) & DC, 9 provinces & 5 countries. Best freq. is 92.1 with 51 stns logged (46 from Toledo/OH & 5 more not heard since I moved from MI). Best Educ.FM freq. is 88.1 with 28 logged, all time.
I've decided to count CBC Canadians on the basis of programming and parallels (/), without necessarily hearing IDs. My logic is this: many of them don't ID, EVER, so if I can hear ANYTHING that determines that they were, for example, CBC English mono, I assume that that statement, on the air, IS the ID. If a station never gives a legal ID, does that mean you can NEVER count it?
(Ed: CBCs do not ID in the way WIOT or other stations might. You are right in that they do give enough clues - usually. Be very careful. On June 24, I got maritime Es, and all CBCs were doing local stuff. I heard NS news on some, NB news on others, a NF wx report, etc... but what to do if two NF CBCs who are // both on 89.5? I counted in that case the more powerful one and in future will treat 89.5 as a relog even though it may be the other CBC! Not all Es openings are going to last until the mono CBCs sign-off at 0007 or 0107 local time when relay lists are given. If you get a relay of CBL 740 Toronto on 93.5, is it Peterborough or London ON? (Luckily I heard London before Peterborough began operating!)
(Frank, again:) Everything in my log are stations I'm 100% convinced of, 95% with actual IDs, or local ads (which I often verify by phone, network (only for Canada - never elsewhere), slogans ("Q97 rocks South Florida" if there's only one stn in S. FL), or a combination of these clues. I don't log it unless I'm convinced I had it. In Macomb I hope to have a CONSTANT taping system where EVERYTHING GETS TAPED; it never happened here cause I never had two machines for dubbing purposes. Next rep't from IL, 73 & great DX! Frank Merrill.

JOHN EBELING - 9209 Vincent Ave. - Bloomington MN 55431-2157 CST

DX FROM CABIN AT PROSIT MN:

JUNE 1985
10 Es (first noted 9th at 2345)
0000 CKUA 6 101.3 AB Red Deer
0001 CKUA 4 100.9 AB Grande Prairie
0001 CKUA 2 99.3 AB Lethbridge
0001 CKUA 3 97.3 AB Medicine Hat
0001 CKUA 12 99.5 AB Spirit River
0001 CKUA 1 93.7 AB Calgary
0001 CKUA 13 91.3 AB Drumheller-Hanna
0009 CHFM 95.9 AB Calgary
0015 CJAY 92.1 AB Calgary

JUNE 10 Es cont'd

0023 CKIK 107.3 AB Calgary "Kix-107"
0030 CBBC 91.7 AB Lethbridge CBC \$
23 Es
0930 KCIR 90.7 ID Twin Falls
0933 KLIJ 96.5 ID Twin Falls
0959 KIYS 92.3 ID Boise "Kiss FM"
1000 KIZN 93.1 ID NewPlymouth/Boise k "93FM"
1020 KLYZ 92.5 WY Powell/Cody lcl ads, calls
1028 KID 96.1 ID Idaho Falls plus SCA(music)
1047 KQY 95.5 MT Butte "Y-95"
1051 KYTA 93.3 MT Billings "Y-93-FM" (turn page)

13

JUNE 23 Es cont'd
 1100 KLCM 95.9 MT Lewiston
 1108 KQPR 89.9 MT Great Falls
 1109 KUFM 89.1 MT Missoula
 1158 WXTU 92.5 PA Philadelphia (surprised met)
 1200 CBTK 95.7 BC Kelowna CBC Sunday Morning prgm
 1210 WJNG 92.1 NY Sagharbor
 1218 CJAY 92.1 AB Calgary (was in in middle of the opening)
 1235 CJSW 90.9 AB Calgary Local info, v. poor audio, phone # 283-0011.
29 Tr
 2300 KDAL 95.7 MN Duluth new stn testing
JULY 1985
1 Es (Ed goofs... Jul 2 Es starts at 1030)
 0930 WJJA 88.1 SC Sumpter
 0930 WLTR 91.3 SC Columbia
 1000 WVFJ 93.3 GA Manchester/Columbus
 1000 WSVH 91.1 GA Savannah
 1001 WEAS 93.1 GA Savannah
 1019 WAPI 94.5 AL Birmingham
 1030 WQTD 93.7 MS Biloxi
 1033 WHOD 104.9 AL Jackson k
 1038 WKOR 92.1 MS Starkville
 1044 WEEZ 99.3 MS Heidelberg
 1045 WJMG 92.1 Hattiesburg
 1048 WJXY 93.5 MS Bay Springs
 1051 WOKK 97.1 MS Meridian
 1053 WDLT 98.3 AL Chickasaw
 1056 WPMO 99.1 MS Pascagoula
 1059 WHIL 91.3 AL Mobile
 1100 WQST 92.5 MS Forest
 1105 WOSM 103.1 MS Ocean Springs
 1110 WMYN 98.3 MS Carthage
 1115 WJMI 99.7 MS Jackson
 1120 WYLD 98.5 LA New Orleans
 1123 WRNO 99.5 LA New Orleans
 1126 WNOO 89.9 LA New Orleans
 1130 WJIN 95.5 MS Jackson
 1135 KROK 94.5 LA Shreveport (& SCA Muzak)
 1155 WNAV 102.3 FL Santa Rosa Bch "WaveFM"
 1200 WPMK 92.1 FL Destin "K-92"
 1220 WPAP 92.5 FL Panama City

DX FROM HOME AT BLOOMINGTON MN:

MARCH 29 1985 Tr
 1900 KGAC 90.5 MN StPeter/Mankato (new stn)
APRIL 15 1985 Tr
 1700 KDOG 96.7 MN Mankato "all hits, 97 Rock" new stn to air.
JULY 1985
30 Es
 1948 KSSR 96.5 TX Houston "97 Rock"
 1952 KMKY 104.5 TX Orange
 2000 KHCB 105.7 TX Houston g

This year has not been a great one for DX. I have spent a good deal of time at the cabin in Northern Minnesota with the TV running day-long on ch.2, looking for signs of Es. It's surprising how many days in June and July were completely free of Es. The time spent at the cabin, of course, means less time to DX at the home location in Bloomington; however the band there is so full of local stations that it is difficult to get much anymore. The Es opening JUNE 10 early morning was noted at 2345 the 9th (Sunday). I was watching ch. 3 (30 miles away) and noticed interference rapidly building. I switched around low-band TV which was active. Went to FM and have reported the results. The CKUA-FM stations were all // (parallel) and I got a lengthy s-off with all stations being listed. For your info, CKUA #s 1-13 are in stereo, 100kw, with h & v radiation. Most Canadian stations are sure tough to ID; I wish you had a top-of-the-hour legal ID in Canada as we have in the states. Regards, John Ebeling. (Don't complain, you caught their (CKUA's) network list, probably given only at s-on & s-off. Best time for an Es to Canada is at 0500-0630 and 0000-0100, and you did it. See Frank Merrill's comments. In all seriousness you have a point, -saul, your editor in the frozen Northlands of Canada where stations don't have to ID, eh!) (Turn...)

JULY 8 Tr
 0900 KNSU 89.7 MN Mankato
8 Es
 1450 KVRH 92.1 CO Saladia
 1457 KIQX 101.3 CO Durango "Kix-FM"
 1459 KKKX 94.1 CO Montrose
 1500 KYLE 102.3 CO Gunnison
 1501 KWSB 91.1 CO Gunnison
 1508 KNAU 88.7 AZ Flagstaff
 1514 KMTS 92.7 CO Glenwood Springs w/wxSCA
 1516 KCFR 90.1 CO Denver
 1519 KYOU 92.5 CO Greeley
 1527 KVVU 99.9 CO Pueblo k SCAw/telemetry
 1530 KJOL 90.3 CO Grand Junction g
 1532 KVEE 92.3 CO Grand Junction
 1540 KOMP 92.3 NV Las Vegas r
 1548 KRAI 93.7 CO Craig singing ID
 1549 KSSD 92.5 UT Cedar City
 1600 WXLK 92.4 VA Roanoke r (diff.dir.)
 1624 KZAN 97.9 UT Ogden k
 1652 WKNC 88.1 NC Raleigh
 1657 WRAL 101.5 NC Raleigh
 1700 WCNI 102.7 NC Wilmington
 1708 WRLT 92.3 NC Asheboro (same satellite music as WTBX 93.9 MN Hibbing!!!)
 1710 WTQR 104.1 NC Winston-Salem
 1714 WMMO 102.1 NC Reidsville g
 1728 WDSC 92.9 SC Dillon (o/"local" WSCD)
 1735 WBOB 93.3 NC Forest City
 1800 WFAE 90.7 NC Charlotte
 1801 WQAK 90.9 GA LaGrange g
 1813 WSSL 100.5 SC Gray Court
 1900 WMRK 89.7 SC Columbia
 1956 KLVY 92.7 TX Crockett
 2002 KPMK 97.9 TX Houston
9 Es
 1139 KRST 92.3 NM Albuquerque "Crest-FM"
15 Es
 0941 WTTT 92.3 IN Bloomington
 0943 WDFP 92.3 TN Chattanooga
 1005 KVRP TX Haskell 95.5
 1015 WEXZ 97.5 TN Knoxville

2010 KGOL 107.5 TX Lake Jackson g
 2020 KYKS 105.1 TX Lufkin
 2021 KPMK 97.9 TX Houston
 2023 KYKZ 96.1 LA Lake Charles
 2032 KDBH 97.7 LA Natchitoches k
 2041 KYKR 93.3 TX Port Arthur
 2045 KQXY 94.1 TX Beaumont (w/SCA Muzak)
 31 Tr
 2358 KDAL 95.7 MN Duluth (new stn in old hometown)

Equip: GE Superadio w/ whip; Pioneer SX-850 w/ Winegard CS-7080 VHF-UHF-FM antenna pointed N.W. at 25'. CDT time used. Present FM totals: 360 logged.

JUNE 1985
9 Es
 2045 CFCR 98.9 AB Red Deer ID 1090
 2050 KZTN 96.3 MT Shelby "Z96" 925
22 Es
 2057 CJAY 92.1 AB Calgary "CJ-92" 1070
 2100 CBBC 91.7 AB Lethbridge 985
23 Es
 1104 KQPK 92.3 MT Ronan 1025
 1115 KIQK 94.9 WA Richland lcl ads 1270
 1133 KZTN 96.3 MT Shelby MTnx 925
 1139 CBBC 91.7 AB Lethbridge //CBR 102.1 985
 1141 KCLK 94.1 WA Clarkston 1165
 1157 CKUA 2 99.3 AB Lethbridge 985
 1204 CJAY 92.1 AB Calgary 1070
 1213 CHFM 95.9 AB Calgary lcl ads 1070
24 Es
 1519 KRYX 99.1 TX Corpus Christi 1215
 1530 KMKK 92.1 TX Bay City "92-FM" 1115
 1534 KVIC 95.1 TX Victoria 1140
 1535 KTYN 98.7 TX Victoria b 1140
JULY 1985
3 CW-Tr (another new-to-air)
 1200 KDAL 95.7 MN Duluth "96-Light" 140
7 Tr-GW (more new-to-air)
 2316 KGAC 90.5 MN St. Peter MPR 65
 2317 KDOG 96.7 MN North Mankato r 75
COMMENTS: So far this summer, Es & Tr have been appearing on a regular basis but have not been spectacular. This report period did yield 3 new states (WA MT VA) & AB for a new province. I also got many new stns by Tr. I was excited to log WA since it was further west than anything I'd logged previously. Hopefully OR NV & CA stns will arrive soon! The morning & evening of JULY 8 were great for Tropo; FM and TV was alive with ND, SD, NE...areas not often logged here, and southern IA, northern WI. If I didn't have to go to work that day, I'm sure my results would have been better. (call in sick-saul); and Es that day from VA & NC to top it off! Looks like the Es action is over for a while (hopefully only until next season-saul) but I'm looking forward to the traditional (at least in these parts) great tropo that always occurs in late August & early September. Hope the rest of you see it too! '73's, Pat.

JOHN L. RIEGER - 1586 S.82nd St. - West Allis 53214-4421 Panasonic RF 2200 w/whip. WISCONSIN

JULY 2 1985 Es (hot opening)
 1301 KSEJ 88.1 TX Humble g (contemp X-tian)
 1302 KABF 88.3 AR Little Rock poor but clear ID
 1305 KUHF 88.7 TX Houston noon nx, in well
 1419 WOVV 95.5 FL FtPierce SOL mx (soul?-saul)
 1422 WCKS 101.1 FL Coral Bch "CK-101", promo
 1431 WSSP 104.1 FL Cocoa Bch "Whisper-104" b
 1434 WBJW 105.1 FL Orlando "BJ-105"
 1441 WKGR 98.7 FL Ft Pierce rp "KGR"
 1452 WAKA 92.3 FL Orlando "K-92-FM" k

COMMENTS:
 This was a welcome opening, especially after a dismal 1984 and lousy 1983. Now have logged 317. In other local notes to help other DXers:
 WYCO 107.9 WI Wausau is now on w/ AdCon (r) via satellite (SMN).
 WKTT 103.1 WI Sheboygan/Cleveland/Two Rivers/Manitowoc (oy-veh-saul) is now on with automated k, a "T-103" slogan, but

not a non-IDer. That's about it, if other dx occurs I'll report. John L. Rieger. (John, were you responsible for a DX test of WAWA? Your name is familiar, you may have even signed the verie. Another WI 1590 stn was even testing simultaneously - a memorable event-s)

BOB SMOLAREK - RD#1 - Box 63 - Whitehouse Station 08887

FEBRUARY 1985
 12 CW-Tr (WLEV off-air)
 1720 WHTX 96.1 PA Pittsburgh
 1733 WRSR 96.1 MA Worcester
24 Tr
 1015 WORQ 102.3 CT Stonington
MARCH 1985
 16 Tr
 0900 WXTX 104.1 MD La Plata
 24 CW-Tr (WLEV off-air)
 1514 WJYE 96.1 NY Buffalo

APRIL 1985
 7 CW-Tr (WIOQ 102.1 off-air)
 1600 WJQY 102.1 MA Springfield
 1610 WEEB 89.5 NJ Cherry Hill b
 8 CW-Tr (WSTW off-air)(93.7)
 0006 WMYK 93.7 NC Elizabeth City
 0101 WRXL 102.1 VA Richmond
MAY 1985
 19 CW-Tr (WPST off)
 1900 WNCQ 97.5 NY Watertown
 15 Tr 0930 WCTX 92.1 PA Palmyra

MAY 15 Tr cont'd
 0933 WCKX 94.1 PA Sunbury
 1000 WHDC 103.7 MD HavreDeGr.
 1030 WWTN 95.9 MD GlenBurnie
 26 CW-Tr
 0200 WICN 90.5 MA Worcester
JUNE 1985
8 Tr
 0500 WGGY 93.7 MA Lawrence
 more next page

JUNE 23 1985 Es
1105 WYNF 94.9 FL Tampa
1125 WJWZ 94.9 FL Miami Bch
1126 WCMQ 92.1 FL Hialeah
JULY 1985
1 Es
1130 KATF 92.9 IA Dubuque "theCat"
1133 KMHC 93.3 IA Des Moines k
1152 KQWC 95.9 IA Webster City
1155 KZOC 92.7 KS Osage City
1158 KYEZ 93.7 KS Salina k
1208 KILR 95.9 IA Estherville
1209 KDHL 95.9 MN Faribault
4 Tr
0900 WBAZ 101.7 NY Southold (newstr)
2300 WHTB 107.1 NY Hampton Bays
2310 WQCN 105.5 CT Groton
2359 WCRN 105.5 PA Tamaqua
6 Ch-Tr (WPAT off)
1100 WRYN 93.1 MA Springfield
1100 WFOC 93.1 MD Baltimore
1100 WNTQ 93.1 NY Syracuse

JULY 8 Es
1745 KBEZ 92.9 OK Tulsa b
1748 KCWD 96.7 AR Harrison
1756 KQWK 96.9 KS Pittsburg
"Quick Rock 97"
1803 KRAV 96.5 OK Tulsa
1806 KZMO 94.3 MO California
1819 KSAJ 98.5 KS Abilene
1823 KPCR 100.9 MO BowlingGreen
1826 KFDI 101.3 KS Wichita
1828 KRBS 104.7 MO Moberly
1830 KCTR 106.5 MO Liberty
1834 KCAC 107.3 MO Lexington
1836 KTFK 106.9 KS Topeka
1840 KMAZ 92.9 NE Beatrice
1845 KMDY 103.1 KS Marysville
1901 KAAH 95.9 MO Bethany
1907 KZKX 96.9 NE Seward
1914 KUVR 97.7 NE Holdrege
1919 KRNG 102.5 IA Des Moines
1928 KDMI 97.3 IA Des Moines
1933 KGGG 94.9 IA Des Moines

JULY 8 Es cont'd
1939 KKRL 93.7 IA Carroll
1940 KMCK 93.3 IA DesM.
(Bob, your 1st Es relog)
July 1 was a pretty good day for Es, but it paled in comparison to July 8, which I thought was fantastic. I want to thank Joe Fela for tipping me off on the July 8 opening. This is my first year for chasing Es and I've heard 31 Es stations. (You did better than me in my 1st year of Es, MUCH BETTER, keep it up 'n' report it-saul)

HARRY J. HAYES - 9 Henry St. - Wilkes-Barre PA 18702 EDT times

JULY 1985
2 Es (At Wilkes Barre)
1600 WYNF 94.9 FL Tampa r
1415 KADL 94.9 AR Pine Bluff farm rep'ts
1430 WMC 99.7 TN Memphis r "FM-100"
5 Tr (holiday visit to Thornhurst, 10 miles away, w/FM4G & empl.)
1136 WRYN 93.1 MA Springfield r
1145 WZOU 94.5 MA Boston r ex-WCOZ
1151 WKSS 95.7 CT Hartford r
1224 WAAF 107.3 MA Worcester in well w/ feature "Noontime Workforce" (Isn't that prgm produced by Radio Moscow?-s.c.)
2100 WQLN 91.3 PA Erie
2200 WKXI 91.5 NY Rochester
8 Es (Back in Wilkes-Barre)
1827 KDBQ 96.9 KS Pittsburg "QuickRock"
1837 KICT 95.1 KS Wichita "T-95"
1936 WOV 94.1 NE Omaha ex-KOMH thruWKCK
1937 KEFM 96.1 NE Omaha no CID (?-saul)
1949 KNEN 94.7 NE Norfolk
10 Airplane Scatter
2130 WZS 103.7 VA Richmond "R's easy 104 FM"
exciting to me anymore but some nice long haul tropo is a different story. No Au DX at all this year & Es is in rather short supply, possibly just a smudge better than 1984. Much more skip though, on TV channels 2 & 3 than last year. I hope for some good tropo catches to report to you next month.

JULY 13 Tr
0012 WKFM 104.7 NY Fulton dance & soul mx
0023 WWTW 101.7 NY Owego
0047 CFMK 96.3 ON Kingston
0935 WSPW 99.3 NY Seneca Falls r
0943 WSHH 99.7 PA Pittsburgh("Wish"?-ed)
1501 WDCX 99.5 NY Buffalo "WDCX 99ers" bb game!
20 Tr
0215 WCFM 96.5 NY Rochester (WPFL off as usual)
0229 WYLF 95.1 NY Bristol Center b weak
1000 WDST 100.1 NY Woodstock fair, 1st time ever from Wilkes-Barre; not on 102.3 yet.
1006 WCFM 99.5 NY Schenectady r weak
21 Tr
0706 WKPQ 105.3 NY Hornell strong r
0721 WNET 104.5 PA Wellsboro r strong
0834 WJWU 107.7 NY Wethersfield polka mx
25 Tr
0819 CKBY 105.3 ON Ottawa 0800 news & nrtip #
COMMENTS: Nothing really exciting yet this year but it is early. I'm hoping for some good Tropo more than anything this year. Reporting long distance skip isn't all that exciting to me anymore but some nice long haul tropo is a different story. No Au DX at all this year & Es is in rather short supply, possibly just a smudge better than 1984. Much more skip though, on TV channels 2 & 3 than last year. I hope for some good tropo catches to report to you next month.

ALAN L. MICHALEK - 227 Redlands St. - Springfield MA 01104 Panasonic RF2900 w/whip antenna

JUNE 1985
7 Es
1605 WOCM 97.5 NF St.Johns
1615 CIOZ 96.3 NF Marystown
1632 CBFA 169.4.3 NF Fort-au-Port FF
1650 CBTB 97.1 NF Bale Verte
1708 CBYF 89.5 NF Portland Creek
1900 CBYM 98.7 NF Mt.St.Margaret
22 Es
2132 WMFR 90.1 MS Jackson
JULY 1985
2 Es
1053 WOKK 97.1 MS Meridian
1055 WJTT 94.3 TN Red Bank "JET-94"
1058 WMFR 90.1 MS Jackson

JULY 8 Es
1818 KTYR 101.5 MO Springfield
1823 KKUZ 102.5 MO Joplin
1828 KIRK 103.7 MO Lebanon
1843 KZCC 98.9 KS Leavenworth "ZZ-99"
1900 KANU 91.5 KS Lawrence "92-FM"
1908 KSKG 99.9 KS Salina "99-KG"
1920 KVGB 104.3 KS Great Bend "K-104"
1935 KMG0 98.7 IA Centerville "99Country"
15 Es
2024 WKKA 92.3 FL Orlando "K-92-FM"
COMMENTS: I came home from work on June 7 to find band open to NFLD. Also heard what sounded like CBC (weak) on 97.9, 101.7 (EE?-saul); and FF 100.1 CBSI17 tent., 103.5 CBSI16 t., 105.1 ??, & 101.5 EE CBMT t...the last

four in PQ. On JULY 8...106.5 w/ "the new Kiss-FM" QTH ??? JULY 15 94.3 "Carolina's hottest FM station" again QTH unknown. Had Es on a few other days, didn't last long, but no clues to what was in. 73s, Al. (Nice chatting on phone when I was in area, Al...-saul)

ROBERT S. ROSS - Box 4373, Stn. C - London ON N5W 5J2 (VE3JFC)

JULY 1985
8 Es
1836 WMFR 90.1 MS Jackson 875
13 Tr
0220 CKNX 101.7 OH Wingham testing 80
0300 WIOT 104.7 OH Toledo 150
0231(?) WKSG 102.7 MI MtClemens "KissFM" 80
14 Tr
1830 WDTR 90.9 MI Detroit 120
1902 WRBO 97.1 OH Ashtabula 100
15 Es
1130 KRCS 93.1 SD Sturgis-RapidCity 1125
1136 KBHE 89.3 SD Rapid City 1125
1200 KILI 90.1 SD Porcupine 1100
18 Tr
0701 WHOT 101.1 OH Youngstown ex-WSRD 140
2030 WNCI 97.9 OH Columbus 225
2100 WUPE 88.1 IN Elkhart 260
2110 CKEZ 93.9 ON Windsor (not CFX) 120

JULY 19 Tr
0635 WEMU 89.1 MI Ypsilanti 140
21 Tr
0415 WBZZ 93.7 PA Pittsburgh 150
0415 WBLK 93.7 NY Buffalo 120
24 Tr
0301 WKLR 99.9 OH Toledo 150
2110 WCVJ 90.9 OH Jefferson 150
25 Tr
0355 WQOD 93.3 OH Youngstown 140
27 Tr
0243 WAUP 88.1 OH Akron 125
0256 WCSE 89.3 OH Cleveland 100
0315 WRUW 91.1 OH Cleveland 100
Tr still not very good yet; managed to get WUPE out of IN (Rob, that's not an ethical way of DXing, I hope you'll return their station to them-saul)-best to date this summer. Es dropped off after July 15th. '73, Rob.

BILL NOLLMAN - Box 184 RFD#1 - Fitchville CT

JUNE 8 1985 Tr
1431 WABK 104.3 ME Gardiner
JULY 1985
7 Ch-Tr
1644 WBAZ 101.7 NY Southold
19 Tr
2024 WNVZ 104.5 VA Norfolk 405
2026 WQHQ 104.7 MD Ocean City "2Q-105" 280
2031 WESR 103.3 VA Onley 330
2032 WCMS 100.5 VA Norfolk 405
2039 WKHI 99.9 MD Ocean City "100-KHI" 280
2041 WNOR 98.7 VA Norfolk 405
2046 WJGE 99.3 NJ Pleasantville "Lucky99.3"
2100 WATV 95.1 NJ Atlantic City 205/205
2105 WMYK 93.7 NC ElizabethCity "K-94" 440
2108 WOBM 92.7 NJ Toms River 160
2118 WOFI 102.9 VA Norfolk 405
2125 WJDE 101.3 VA Hampton "2WD" 400
2130 WNRN 94.9 VA Va.Beach "Winner-95" 400
2136 WQVR 98.3 NJ Ocean City 215
2143 WSLT 106.3 NJ Ocean City 215
2129 WKRE 107.5 VA Emore "K-Country-105"340

JULY 29 Tr
1858 WAYV 95.1 NJ Atlantic City
1859 WUSL 98.9 PA Philadelphia "Power99-FM"
1859 WJBR 99.5 DE Wilmington
1900 WIOQ 102.1 PA Philadelphia
1903 WJCK 102.9 PA Philadelphia "Magic-103"
1904 WAFP 103.5 NY Lake Success "N.Y.'sApple"
1904 WRGN 103.9 NY Riverhead "Rockin'-104"
1906 WSLT 106.3 NJ Ocean City with "Gus the Weatherdog"
1914 WKSZ 100.3 PA Media "Kiss-100.3"
1918 WSTW 93.7 DE Wilmington
1920 WMMR 93.3 PA Philadelphia
1930 WADE 95.9 NJ PointPleasant
1930 WFLN 95.9 PA Philadelphia
1932 WJDE 96.5 PA Philadelphia
WFLN: "Your station in the Delaware Valley for classical music, WFLN AM & FM in Philadelphia."
COMMENTS: June & July were as busy as possible with scanner & TV Es, & recently UHF Tropo. This report covers some real nice FM tropo. On JULY 19 the great VA catches surprised me. A friend called called around 2100 & said he had WNOR-VA with an FM dipole on his stereo 20 miles W. of me in Colchester CT. He was estatic! The real shocker was JULY 29 with FULL SCALE (5-plus) signals from assorted NJ & PA stations. I was rather happy to fill in some of my Philly empties. - Bill Nollman

had WNOR-VA with an FM dipole on his stereo 20 miles W. of me in Colchester CT. He was estatic! The real shocker was JULY 29 with FULL SCALE (5-plus) signals from assorted NJ & PA stations. I was rather happy to fill in some of my Philly empties. - Bill Nollman

BRUCE F. ELVING - Box 24 - Adolph MN 55701-0024

KEARNEY NE: THE FINAL CHAPTER (log closes at 691 stations during 5 1/2 years)

JUNE 10 1985 Es: WTTA-95.3 GA Thomaston, WDAX-95.3 GA McRae, and WABE-90.1 Atlanta. WABE previously heard w/SCA only but now main carrier ID at 1730.

JUNE 23 Es: WNCM-88.1 FL Jacksonville.
---and then, with tears in my eyes (Bruce, I hope you don't mind my making things more dramatic-saul), I took down the 10-element Antennacraft antenna & loaded it into a U-Haul truck. We left behind a 20' section of steel mast which was too long to take, and which would not come apart. (Pass the Kleenex-s)

DULUTH MN: (Bruce, one of my main Tr paths is up WI to Thunder Bay, twice in two summers, and well up that way a few other times; have you ever had much down my way from there? See my report if I get to it this month; if not, next month-saul)
We've bought rural acreage - 34 acres; and a house N.E. of Esko, or 22 Kilometers WSW of Duluth, so I'll add to the Duluth logs. I've an antenna at my in-laws, north of Adolph, and one at my mother's near downtown Duluth. I may remove antennae at Weldon's north of Adolph, as I can get everything there here. I re-installed the Antennacraft at a point behind the peak of the house for aesthetic reasons. It does quite well, & may increase height. I'm still using my 1969 Fisher 500TX as main revr. The following mainly from rural Esko: (turn

JULY 8 Es WCPE-89.7 NC Raleigh at 1800; also Tr: KMOJ-89.9 MN Minneapolis, KBHL-103.9 MN Osakis, KDAL-95.7 MN Duluth (new local), K203AN 88.5 Moose Lake MN - verified as a 1-watt xlr of KDNW 90.5 Duluth, at 32 miles. JULY 17, with a rare off-the-air by WHSA 89.9 Brule WI, I got: KRPR Rochester MN - a student-run stn. Their director wrote me that KRPR left the air immediately thereafter & wasn't to be back till September. KGAC 90.5 MN StPeter thru KDNW often possible from here by rotating antenna properly.; KDSB 90.9 SD Pierpont, KLZC "EZ-96" in Stereo in Crookston MN.
(Bruce, WRHR-NY...I can't tell if it's Stereo, can anyone out there? Bruce wants to know. I've no stereo indicator and I'm not too close to Rochester (115 miles air). I do know they go off at night, carry almost all (maybe all) Rochester Red Wings baseball games, as does WMC-90.1, etc..., and I've heard ads run during the games...ads on 90.5 (saul) (Bruce, as soon as I compile lists, I'll send you slogans I've heard, call changes, like 89.1 WJZ Syracuse NY using "Z-89" & p format, heard here a bit, though weak-s)

AN EDITOR WHO IS LATE WITH HIS COLUMN BECAUSE HE FORGOT ABOUT IT DURING 5 days of SUPER Tropo
From Burnt River ON:

JULY 1985

18 Tr (cont'd from last month)
2330 WUOM 91.7 MI Ann Arbor ID s-off
2336 WBLV 90.3 MI Twin Lakes j
19 Tr (SUPERTROPO CONTINUES)
0023 WYEN 106.7 IL Des Plaines "106-WYEN"
0030 WIDL 104.9 MI Caro
0100 WEMU 89.1 MI Ypsilanti j
0105 WEMU 88.9 NY Richmond UPInx s-off
0200 WLLL 90.9 IL Urbana
0201 WQTE 91.3 OH Toledo
0224 WKLQ 94.5 MI Holland
0230 WKEE 100.5 WV Huntington "The river City's Hit-100...Key-100" r
0300 WVPB 91.7 WV Beckley WV Public Radio
0301 WVPB 89.9 WV Wheeling WV Pub. R.
0323 WKWK 97.3 WV Wheeling w "97-WK"
0324 WJFM 93.7 MI Grand Rapids r "All hits"
0330 WVPB 88.9 WV Buckhannon WV Pub. R.
0600 CBOP-988.7 PQ Chapeau (caught sleep!)

JULY 30 Es

2001 W777 90.7 FL Panama City
2031 KYKZ 96.1 LA Lake Charles
2045 KSEB 88.1 TX Humble "88-FM" g

30 Tr

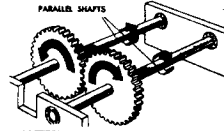
2130 WCVJ 90.9 OH Jefferson g

AUGUST 1985

2 Tr
0131 WEMU 89.1 MI Ypsilanti j
7 Tr
1706 CBF 100.7 PQ Montreal FF-CBC-\$
1724 CJFM 95.9 PQ Montreal EE
1730 CBOP 988.7 PQ Chapeau CBC-FF-mono
1731 CHLM 103.5 PQ ValD'Or "
1911 CITE1 102.7 PQ Sherbrooke FF m
1956 WEZG 100.9 NY NorthSyracuse b
8 Tr
0000 WSKG 89.3 NY Binghamton S-off
0130 unID 100.7-9 "WFM0" r ??????East
9 Tr
0005 WSUE 101.3 MI SaultSteMarie k
0713 WMHT 89.1 NY Schenectady
10 Tr
0105 WBNY 91.3 NY Buffalo p
0715 WKAL 95.9 NY Rome
10 MS (5 min. burst, not Es)
2027 KKKX 95.7 KS Ottawa
11 Tr (more great tropo!)
1619 WRKR 100.7 WI Racine r
1637 CBF 100.7 PQ Montreal
1640 KSHE 94.7 MO Crestwood ID & QTH,
(slight chance this MS but doubt it)
2334 WCLT 100.3 OH Newark "T-100"
12 Tr
0059 WWSW 94.5 PA Pittsburgh "3WS" r

AUGUST 12 Tr (cont'd)

0100 WOSU 89.7 OH Columbus APnx s-off 0107
0222 WNCO 101.3 OH Ashland k
0630 WSKG 89.3 NY Binghamton
0653 WCLH 90.7 PA Wilkes Barre "90.7-FM"
0654 WKSJ 102.7 PA Williamsport
0659 WJZ 89.1 NY Syracuse pr
1907 WRKR 100.7 WI Racine r "OneDoubleOhSeven"
2323 CJFI 99.9 ON Sarnia "FM-100" rn
2324 WSAQ 107.1 MI Port Huron
14 Tr
0330 WRUW 91.1 OH Cleveland (finally!)
0500 CBOP 988.7 PQ Chapeau
...GET THIS, this FF CBC was running off the ENGLISH NETWORK, BEWARE DXers*****
15 Tr
2043 CBF 100.7 PQ Montreal
~~2100 CBOP 988.7 PQ Chapeau~~ I must be getting tired I made the same error twice in the same place!!!!
2100 CBOP 7 102.1 ON Brockville
2310 CBCW 98.5 ON Whitney finally able to isolate from 98.7 CBC station!
2320 CJMF 94.3 PQ Montreal FF r
16 Tr
0215 CBM 93.5 PQ Montreal (CBCL,CBCP off)
22 MS in car near here
0845 CBON 20 89.3 ON Thunder Bay prev. by Tropo & once possibly by Es though not counted.
First ever MS ID in my car & first ON MS.
23 Tr
0720 CFQR 92.5 PQ Montreal EE tm
0730 CKOI 96.9 PQ Verdun "C'est Quoi" FF
26 Tr
0730 WSKG 89.3 NY Binghamton NPR
1343 CITE1 102.7 PQ Sherbrooke FF "Cit -Un, Cent-Deux virgule Sept" virgule means comma as the PQ folks use 102,7 not 102.7
1344 CKOI 96.9 PQ Verdun FF r
1345 CIEL 98.5 PQ Longueuil FF
1425 CKMF 94.3 PQ Montreal FF r
1500 CFQR 92.5 PQ Montreal EE m
27 Tr
0800 CFTI 92.1 ON Timmins k
0801 CBON 25 97.1 ON Timmins
28 Tr (CHAY off or weak or...)
0032 WNTQ 93.1 NY Syracuse "93Q" r
0042 WZAK 93.1 OH Cleveland
0127 WMHE 92.5 OH Toledo
0222 CHAY 93.5 ON Barrie drifted during re-pairs, on other side of WWSE-93.3, shocked me!
1438 "Cruise 92" 92.1 to West; Bad Axe MI?
29 Tr
1545 WZAK 93.1 OH Cleveland (more CHAY offair)
SUPER TROPO SEPT 1-5: WI IN IL MI ON PQ, next mo.



Technical TopiX

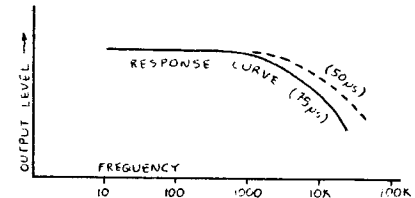
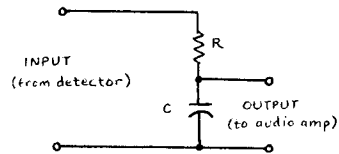
BROADCAST DE-EMPHASIS

Q: What is pre-emphasis in radio broadcasting, and what is the switch on my AM/FM receiver actually doing?--it is labeled 25µs and 75 µs.

A: In broadcasting, it is recognized that noise is a persistent problem which, hopefully, can be largely overcome with stronger signals and near-100% modulation. By modulating a signal "louder," it is raised above the noise floor that much more than a "softer" signal--an improvement in signal-to-noise ratio. If made too much louder, overmodulation occurs, which produces audible distortion. Naturally, one wants one's FM signal to be as "hi-fi" as possible, so the compression techniques used by AM broadcasters are undesirable. Thus, pre-emphasis is used in broadcasting.

sometimes
Actually, pre- and de-emphasis work together as a team. At the transmitter, the audio is passed through a pre-emphasis (=equalization, or tone control) circuit that boosts the treble frequency content of the program source. At the receiver, a complementary de-emphasis circuit cuts treble an equivalent amount so that the resulting audio response curve is flat. Since the noise is equal at all frequencies, and since the circuits cannot differentiate between the audio and the noise, any noise picked up in the atmosphere and in the receiver is cut the same amount as the treble notes. Ingenious, wouldn't you say? (Dolby "b" tape noise reduction achieves an increase of 10dB S-N ratio by this method.)

Pre-emphasis is applied to the audio range above 4000Hz, and is specified by time. In the US, standard pre/de-emphasis is 75µs; in Britain it is 50µs. By "75µs de-emphasis," we mean that the time constant of the de-emphasis circuit in the receiver is 75µs. The time constant defines the frequency response of a filter such as the simple RC circuit shown below. The response curve appears also, showing how the filter's output level falls as frequency increases. Suitable values of R and C would be such that their product is equal to the time constant. (For 75µs, a combination of .001 µF and 75 k would work.) A shorter time constant will allow higher frequencies to pass with less attenuation.



Some tuners have included de-emphasis switches, and no doubt the reader owning such a tuner has discovered that by placing the switch in the 25 µs position, a noticeably "brighter" sound is obtained. Of course, this is analogous to playing back a Dolby-encoded tape without Dolby; in either case, the degraded signal-to-noise ratio may be found acceptable, especially if the audio amp is not the best to begin with.

73, Tim McVey
Rt. 3 - Box 568
Bolivar, TN 38008-9556

SOUTHERN FM DX

Danny Buntin
1312 N. Skyline
Stillwater, OK 74075

October 1985

DEADLINE: 10th

For FM DX reporters from: AL, AZ, CA, CO, DC, DE, FL, GA, KS, KY, LA, MD, NC, NM, NV, OK, SC, TN, TX, UT, VA & WV. Happy DXing!

'85's Es SEASON TURNS OUT LITTLE BETTER THAN '84 FOR MOST

Well, judging from the reports received over the summer the '85 skip season turned out a bit better than dismal '84, so that's not saying much. Trop has been somewhat active since July with openings going out to 500+ miles, such as the Aug. 21-22 tropo, apparently associated with a hurricane as reported by a new Alabama reporter. And the August Perseids did not get by without a few reported ms loggings.

Bill Townshend, 4500 Conn. Ave. NW #901, Washington, DC 20008 EDT 202-966-8046

7/29 tr	7/29 tr
0811 WWDB 96.5 PA Philadelphia	0848 WIQ 102.1 PA Philadelphia
0814 WDAC 94.5 PA Lancaster, g	0850 WZGO 106.1 PA Philadelphia, ex-WWSH
0821 WDAS 105.3 PA Philadelphia	0922 WLAN 96.9 PA Lancaster
0823 WSNI 104.5 PA "	0924 WFSW 97.5 NJ Trenton 156
1842 WMMR 93.3 PA "	1145 WNGK 102.9 PA Philadelphia
0844 WYSP 94.1 PA "	8/20 tr
0847 WKXW 101.5 NJ Trenton 156	0801 WRAL 101.5 NC Raleigh 235

The WRAL catch eclipses by 20 miles my previous record of 215 mi. on 10/22/81, WLIR 92.7 Garden City, NY on Long Island (Nassau County). WRAL was heard on my Portavision-55 just before I went upstairs to work. It's been a lousy year for tropo here. Stations heard by states: MD 41, VA 32, PA 21, DC 12, NJ 6, DE 5, NC 3, NY 1, and WV 1. Total 122. Maybe we'll get some halfway decent tropo before Fall really sets in. '73's.

Keith Pugh, 227 Martin St. New Hope, AL 35760 6/7 to 9/4

I just joined WTFDA in July and really like it! I haven't been DXing long; I started in June '83 when I picked up my portable and found the local stations being overlapped by Colorado FM's. Not having an outside antenna at the time, this was probably the strongest skip signals I've witnessed. The July 2, 1985 opening to No. and So. Dakota was similiar, but with the outside antenna and amp in use. I had received skip before 1983 though, two Canadian stations in Dec. 1980 and in June 1981 openings from all directions, RI, MN, NY, then to KS, CO, ND, SD, TX and one MO station, 103.3 KMOX. Also my most distant catch was on 6/12-81, 94.9 KUOW, Seattle, WA. Back then I kept my log by putting check marks and dates in the McIntosh catalog that included the FM directory. In March 1983 I bought a JC Penney portable "Jam Box" and was surprised by the selectivity it had. I've been using it ever since. I put up an Archer 6-element in Sept. '83 and started using an Archer 18 db amp. That made the JC penney DX ready. But I'm looking forward to someday owning the Accuphase T-106 or Carver TX-11.

My report starts with the first Es this season. It's been pretty good compared to last year's flop. Many unID French stations on June 7th and 14th that's not included in the report The E-skip seems to have left as of July 29th. The tropo on Aug. 21 and 22 may have been caused by the remains of Hurricane Danny. Elena hasn't generated any results. Arkansas stations were giving very strong signals at the time I noticed the opening at 1715. With antenna turned east KHLT was over WQXI Atlanta. After the fade-out at 2000 the same Arkansas stations logged earlier were back in. I took the last log at 1053 8-22 on 91.3 because there wasn't any new stations left. The overall opening didn't fade until 1530 Aug. 22. Well, now to wait for some more tropo, E-skip is gone. Tropo hasn't happened very often here. '73's. [Ed. note: Welcome to WTFDA and Southern FM DX, Keith. I'm glad to know that you have aspirations for a better receiver. I think too many of the newer DXers have insisted upon using cheap equipment and with little wonder, soon forget the hobby. I feel, in the hobby of FM DXing spending a lot for good equipment is not a bad idea, since once you do, any further expenses in the hobby can be small, so unlike many other hobbies. DB]

6/7 Es	6/7 Es
1200 WBMT 88.3 MA Boxford, r, ID 970	1416 KANZ 91.1 KS Garden City, c ID 840
1207 WHEC 88.5 ME Bangor, c, ID 1160	1418 KSPZ 92.9 CO Colorado Springs, r, ads
1211 WDBX 98.3 ME Waterville, r	6/14 Es
1216 WKZS 99.9 ME Bangor, r, ID 1090	1233 CBNt 88.1 ON Sault St. Marie, c 840
1218 WKHJ 92.9 ? ? k	1235 CBLt 94.1 ON Toronto, FR c 730
1233 unID 93.1 Fr. mono	1237 CKNJt 93.1 NB Fredrickton, k 1280
1235 f/out	1239 WCFB 99.9 NY Flattsburg, rp B100 960
1410 KIFO 93.9 CO Colorado Springs, rp ID	1242 WHJY 94.1 RI Providence, rp, 94-HJY940
1415 KSEC 93.3 CO Lamar, r, ID 930	1248 CIME 99.5 PQ Ste. Adele, "SEEN" ID 1050
1416 KANZ 91.1 KS Garden City, c, ID 840	cont.....

SOUTHERN FM DX

Pugh, cont.

OCTOBER 1985

6/14 Es	6/14 Es
1251 CBF 100.7 PQ Montreal 1025	1012 WKSQ 94.5 ME Ellsworth, r "Kiss-94"
1253 CBAF31t 104.7 NS Digby, mono	1029 WKXZ 93.9 NY Norwich, area ads 790
1256 unID 107.5 Fr. \$	1032 WZFP 92.9 VT Burlington, b, ID 960
1300 WEZO 101.3 NY Rochester, b, ID 750	1035 WIAA 88.3 MI Interlochen, c ID 700
1305 CFMO 93.9 ON Ottawa, mr, ID 920	1040 WMJC 94.7 MI Birmingham, r "Magic 95"
1315 CKBY 105.3 ON Ottawa, city ID	1053 WJHT 95.7 MI Grand Rapids, 96 lite 565
1330 CKCU 93.1 ON Ottawa, 93 point 1 ID	1056 unID mentioned northern Ontario, mono
1333 CBNt 97.3 ON Nipigon, mono 1030	1102 WTBX 93.9 MN Hibbing, r, ID 960
1340 CBNt24 90.7 ON Kapuskasing, ID 1040	1105 KYCK 97.1 MN Crookston, k, ID 1085
6/23 tr	1109 WMRX 97.7 MN Beaverton, r, ID 665
1300 WBKY 91.3 KY Lexington, ID 260	1119 KQWB 98.7 MN Moorhead, r, Q-98 1065
1308 BBW? 91.1	1122 KVOX 99.9 MN Moorhead, K-100, ads
Es	1128 KDAY 93.7 ND Fargo, Y-94 1085
2008 KIL0 93.9 CO Colorado Springs 1070	1130 KNOX 94.7 ND Grand Forks, mr, ID 1120
"K101-94"	1135 KKKL 92.9 ND Grand Forks, XL-93, ID
2041 KSIDt 98.7 NE Sidney, b 1010	1139 KBWS 102.9 SD Sisseton, r, B-103 990
6/24 Es	1152 KKL5 93.9 SD Rapid City, r, ID 1120
1341 KNAU 88.7 AZ Flagstaff, k, wx, ad	1154 KQAA 94.9 SD Aberdeen, r, ID 1120
1345 KAFFt 92.9 AZ Flagstaff	1155 KSON 94.1 SD Aberdeen, r, ID
1347 KRKE 94.1 NM Albuquerque	1203 KSNJ 93.3 ND Jamestown, r, ID 1100
1350 f/out	1204 KKRC 93.5 SD Sioux Falls, r, ID 855
1418 KEZB 93.9 TX El Paso, r, B-94 1160	1205 KMHA 91.3 ND Four Bears, ID 1280
1419 KFTM 92.3 TX El Paso, r, ID	1212 KEAT 97.3 SD Sioux Falls, r K-pat 855
1420 unID 95.7 "Kiss-FM, r, \$, west	1213 KQDY 94.5 ND Bismarck, k, ID 1165
1422 KGBE 99.9 TX Monahans, K-gee ID 960	1216 KGNDt 90.5 ND Bismarck, c
1425 KSTMT 99.9 TX El Paso, b 1160	1229 KRSDt 88.1 SD Sioux Falls, g 855
1428 KTSF 88.5 TX El Paso, c ID	1230 KNWC 96.5 SD Sioux Falls, g, ID
1430 KANZ 93.1 TX El Paso, r, 931, ID1160	1232 KCMT 100.7 MN Alexandria, KC100, ID 925
1435 XHGUT105.9 CHI Ciudad Juarez, r\$, SS	1255 KBWH 99.5 MN International Falls, g, ID
1442 XHHT 101.7 CHI Ciudad Juarez, \$ SS	1259 WAYL 93.7 MN Minneapolis, b, ID 810
1443 KTZA 92.9 NM Artesia, r, ID 1035	1300 f/out
1447 KTXt 88.1 TX Lubbock, c 880	1329 CKEZ 93.9 ON Windsor, b, ID 560
1448 KHBYt 96.3 TX El Paso 1160	1330 f/out
1455 KLAQ 95.5 TX El Paso, r, ID	1358 KKKL 92.9 ND Grand Forks, r, XL-931120
1457 KLYT 88.3 NM Albuquerque, g, ID 1160	1359 KIXX 96.1 SD Watertown, r, ID 950
1500 KBUY 94.1 TX Amarillo, k, ID 875	1402 KSDN 94.1 SD Aberdeen, r, ID 1020
1501 KRWG 90.7 NM Las Cruces, c, ID 1165	1406 KDVL 102.5 ND Devels Lake, c, ID 1180
1510 KSET 94.7 TX El Paso, r, ID 1160	1408 KESD 88.3 SD Brookings, c, ID 915
1522 KCPX 98.7 UT Salt Lake City, r ads	1410 f/out
1530 KEPC 90.5 CO Colorado Springs, ID	tr
1532 KSPZ 92.9 CO Colorado Springs, 1070	1416 WMIX 94.1 IL Mount Vernon, ad 290
r, ID	Es
6/25 tr	1443 unID 94.1 Spanish \$, f/out 1444
0030 KRNB 101.1 TN Memphis, s ID 235	1500 WTBX 93.9 MN Hibbing, r, ID 960
6/27 tr	1502 f/out
2240 WKIR 104.1 TN Jackson, k, ID 165	tr
2243 WMC 99.7 TN Memphis, r, ID 235	1523 WVUB 91.1 IN Vincennes, c, ID 295
6/28 tr	7/3 tr
0031 WNBC 103.1 Columbia, k, ID 170	1605 WKTC 93.9 KY Madisonville, r, ID 200
Es	7/8 Es
1101 KN5H 98.7 NM Truth or Consequences, b, ID 1190	1305 WFUV 90.7 NY New York, ID 790
1103 KRWC 90.7 NM Las Cruces, ID 1165	1310 WHJY 94.1 RI Providence, rp, 94-HJY950
1120 KRNT 94.3 NM Raton, r, ID 1035	1330 WHEB 100.3 NH Portsmouth, r, ID 1015
1130 KTRM 99.9 NM Clovis, r, ID 950	1349 WYYY 94.5 NY Syracuse, r, ID 790
1132 KLYT 88.3 NM Albuquerque, g, ID 1160	1350 WJBO 97.9 ME Portland, r, JBQ 1060
1134 unID 91.1 "T-91", r, west	1351 WABKt104.3 ME Gardener, r 1075
1135 KZZX 99.5 NM Albuquerque, r, ID 1160	1352 had to leave, too bad, a good opening.
1139 KCB 93.3 NM " " "	7/17 tr
1140 KRST 92.3 NM " " , k, ID	0141 WKOR 92.1 MS Starkville, r, ID 120
1143 KWSL 94.1 NM " " , rp	0147 WALX 100.9 AL Selma, r, ID 157
1145 KAMZ 93.1 TX El Paso, r, ID 1165	7/20 Es
1150 KRKE 93.9 ? ? rock, west	1132 unID 91.7 Canadian English, mono
1156 f/out	1133 unID 93.7 French, mono
1220 KEZB 93.9 TX El Paso, r, ID 1165	7/27 tr
1230 KBT 93.5 NM Ruidoso, r, ID 1030	1330 WHEB 103.7 MS Hattiesburg, b, ID 282
6/30 tr	1335 WAAW 103.7 KY Murray, r, ID 180
1726 WBBQ 104.3 GA Augusta, ID 265	7/29 tr
1745 WIZD 104.1 AL Atmore, r, ID 265	1730 WGCC 95.1 KY Glasgow, k, ID 160
1755 KWSZt104.1 LA Monroe, b 360	Es
7/1 Es	1911 KKIS 93.9 SD Rapid City, r, ID 1055
1043 unID French 88.3 mono, 93.1 mono	1914 KQSYt 95.1 SD Deadwood, r
to 101.5 \$, 97.7 \$, 96.3 mono	8/12 tr
1050	1000 WBMG 103.9 TN McInnville, r, ID 90
1056 KSJN 91.1 MN St. Paul, c, ID 800	1013 WCRB 102.5 MA Waltham, calls, cont.. 980

8/12 ms
 1054 WKEZ 94.1 VA Yorktown, "spend your day
 with EZ-94, WKEZ..." 568
 8/21 tr
 1715 KHIT 94.1 AR Little Rock, k-lite 94
 1717 KABF 88.3 AR Little Rock, ID
 1720 KSSN 95.7 AR Little Rock, k, Kissing
 1726 KKYK 103.7 AR Little Rock, r, ID
 (over local WQEN Gadsden)
 1733 KZLE 93.1 AR Batesville, r, 93 -FM, ID
 1815 KHRK 97.1 TN Memphis, s, ID
 1828 KEZK 102.5 MO St. Louis, b, ID
 1900 KASU 91.9 AR Jonesboro, c, ID
 1905 WSTO 96.1 KY Owensboro, r, 96SDT ID
 1915 WCTL 101.5 IL Carbondale, r, ID
 1919 KGMO 100.7 MO Cape Girardeau, rp, ID
 1922 unID 98.1 "Y-98-FM oldies, WRAY?
 1936 KLAZ 98.5 AR Little Rock, ID
 1951 WEBQ 99.9 IL Harrison, ID
 1955 KSHE 94.7 MO Crestwood, rp
 2000 f/out
 2041 KNCE 101.9 LA Monroe, r, FM-102, ID
 2045 KEZO 100.3 AR Jacksonville, ID
 2100 KWOZ 103.3 AR Mountain View, k, ID
 2105 KXKZ 107.5 LA Ruston, ID
 2113 unID 106.1 "magic-106", r
 2138 WWKZ 103.5 MS New Albany, r, KZ 103
 2152 WFTA 101.7 MS Fulton, r, ID
 2153 WTXI 102.3 MS Ripley, k, ID
 2200 KLRE 90.5 AR Little Rock, ID
 2234 KFXE 92.3 AR Pine Bluff, ID
 2345 WESE 95.9 MS Baldwin, b, ID

8/22 tr
 0020 WBFC 93.5 AR Forest City, ID
 0030 KACQ 106.3 AR Hot Springs, k, ID
 0037 WARC 103.9 MS Columbus, s, ID
 0205 KTMO 98.9 MO Kennett, k, ID
 0240 KVNE 89.5 TX Tyler, g, ID
 0300 WJDQ 101.3 MS Meridian, r, ID
 0338 KTJJ 98.5 MO Farmington, k, ID
 0652 KSCM 105.7 MO St. Genevieve, ID
 0705 KWPM 93.9 MO West Plains, r, ID
 0717 WXID 94.7 KY Mayfield, ID
 0745 KHLS 96.3 AR Blytheville, ID
 0823 KUMR 88.5 MO Rolla, c, ID
 0830 unID 89.9 "This is BRM" \$, ms?
 0837 KLSR 93.7 AR Fort Smith, r, Kisser 93
 0850 WIST 94.3 TN Lobelville, ID
 0915-40 AR still in
 0915 WJLQ 100.7 FL Pensacola, ID
 0918 WCGQ 107.3 GA Columbia, ID, 107-Q
 0930 WTVY 95.5 AL Dothan, k, ID
 0940 WBLX 92.9 AL Mobile, s, ID
 1053 KUCA 91.3 AR Conway, mono, ID

8/24 tr
 2200 WPLN 90.3 TN Nashville, c, ID
 8/26 tr
 1830 WRVU 91.1 TN Nashville, r, ID
 (increased power to 14,500 watts)
 9/4 tr ID
 0000 WSOF 89.9 KY Madisonville, g, sign-off

John Jefferson, 4016 Crest Ct., Pleasanton, CA 94566

Once again my DX report is overdue. I can only plead extenuating circumstances and throw myself at the mercy of the court. (Better late than never. DB) It's been a rough year, so far, between my mother's death in April and the sale of my former employer to an Omaha firm. I accepted an offer to work with an old friend the night before they laid off half the staff, though I wasn't among the layoffs. Anyway, the skip season was a disappointment (but better than 1984), probably due in large measure to that obnoxious high-pressure area that sat over the New Mexico area through most of the season. However, thanks to the Perselids, I did finally achieve my 1984 goal: logging #800! As always, the MR80 was the tuner, fed by the S/Probe-9 at 55' off the ground. Underlined are new; dashed underline indicates a new mode.

2/4 tr (semi-local)
 2343 KXBX 98.3 CA Lakeport, ads, ID 115
 2/21 gw
 2400 KDJK 95.1 CA Oakdale, ID 50
 (Finally on: CF out since 1979 or earlier.)
 2/25 tr
 0100 KLKT 100.1 NV Incline Village, ID 140
 2/27 ms
 0730 KITT 96.3 NV Las Vegas, calls 370
 3/8 tr
 1000 XHBA? 104.1 BCN Mixicali, Span. cl.
 4/10 ms
 1038 KMML 98.7 TX Amarillo, calls 1115
 4/15 tr
 0004 KALF 95.7 CA Red Bluff, calls 155
 (new freq.)
 5/10 tr
 1014 K217AM 91.3 CA Ukiah, kCDS ID 130
 6/5 tr
 0053 KOTR 94.3 CA Cambria, calls 150
 6/8 tr
 0211 KXGC 93.1 CA Arcata, ID at 0500 250
 Es
 1057 XHHV? 94.7 SN Ciudad Obregon?? JS, L, v
 1100 KSNP 98.7 NM Truth or Conseq., ID845

6/8 Es
 1111 XHFL? 90.7 SN Ciudad Obregon. Right
 freq. wrong freq. (not 90.5)-off channel?
 heard in past on 90.55, so known drifter.
 6/10 Es
 0810 KDCK 95.5 KS Dodge City, ad DCK 1195
 0818 KSKG 99.9 KS Salina 99KG 1310
 0819 KHCK 100.7 KS Holsington, calls 1260
 0821 KHAZ 99.5 KS Hays 1155
 0835 KABI? 98.5 KS Abilene, m
 0849 KHCC 90.1 KS Hutchinson, loc. ref. 1280
 0855 KKMG 98.9 CO Pueblo, Magic 99 935
 0859 KFDI? 101.3 KS Wichita, talk o/KICI
 0905 KHUT 102.9 KS Hutchinson 1280
 0907 KLZA 97.9 KS Wichita 1315
 0943 KVUU 99.9 CO Pueblo, K-View 935
 1001 KJCK 94.5 KS Junction City, ID 1340

(John's report will be continued next month and Pat Dyer's report will also be in then. Surprisingly, Pat had no FM Es for Aug, first time ever, though he was away for a few days. Sorry, about the delay in getting all of this month's column out. DB)

#####



QSL CORNER

THOMAS J. YINGLING, JR.
 221 PINWOOD ROAD
 BALTIMORE, MD 21222-2345

TV QSL's

GA WTSG 31 Albany, 1211 Slappy Blvd., P.O. Box 4050, zip 31707.
 Letter from Tony B. Gainous, CE in 2 weeks. Copy of letter below. *Barstow*
 NE WOWT 6 Omaha, 3501 Farham St., zip 68131. Letter from Wayne Goetz, CE in 2 weeks. *Ely*
 OH WNEO 45 Alliance * 275 Martinel Dr., Kent, OH 44240 QSL Card
 WEAO 49 Akron * from LuAnn Worley, Public Information
 Coordinator with reply in 20 days. *Gainous*

Reporters this time are Paul Gains, Nate Ely & Roy Barstow. This month I'm a little low again on items to type up, so I got a copy of Roy Barstow letter of WTSG-TV ch. 31 in Albany, GA. If anybody else got some NEW FM & TV QSL's would you please send them in for printing the this column. I like to thank all of you that have in the past reported with your QSL information. As you by now should have noticed that I got a new word processor program called FontMaster which as 16 different printing fonts build into it. Well; enough computer talk and on to this month QSL copy 73's for now.

WTSG-TV 31 ALBANY, GEORGIA

1211 Slappy Blvd., P.O. Box 4050, Albany, GA. 31708 - 912-435-3100

October 8, 1984

Mr. Roy Barstow
 P.O. Box 488-T
 Teaticket, MA 02536

Dear Mr. Barstow:

We have received your letter of October 2, 1984 inquiring about our programming on September 23, 1984 from 7:20-7:22AM.

Your information is correct according to our station log.

Sincerely,

Tony B. Gainous

Tony B. Gainous
 Chief Engineer

TBG/th

Pat Dyer (continued)

20 Es 1123 KDLO 3 SD 1070	23 Es 2032 KKMA 2 ND 1225	26 Es 0929 WESH 2 FL 1055
1129 KGFE 2 ND 1240	2113 WBAY 2 WI 1190	0930 WTJW 4 FL 1150
KTCA 2 MN 1110	2119 KGAN 2 IA 945	0931 WPTVt 5 FL
1201 KOTA 3 SD 1040	2320 apx fade/outs	(MUF 101.5-1111)
1210 CEWFTt 3 MB	24 Es 0045 unid ch 2 ne brf	1235 YSU t 4 ES
1219 CKND2 2 MB	0750-0820 unids ch 2,3	1238 TGV 3 GU 1120
(MUF 107.9-1233)	0820 KTVKt 3 AZ	(MUF 98.6-1312)
1452 KKMA 2 ND 1225	0821 KTVXt 4 UT	1354 unids chs 2-6 Sp
1456 KPRYt 4 SD	0823 KUTV 2 UT 1080	1356 YSR 2 ES 1200
1542 KTVQ 2 MT 1245	0854 unids ch 2 ne	(MUF 88.9-1425)
1552 KTWO 2 WY 1015	0910 fade/outs	1500 fade/outs
(MUF 95.1-1620)	1105-1155 unids ch 2-5	1605 WPBT 2 FL
1738 KOTA 3 SD 1040	1157 WISC 3 WI 1065	1615 WTJvt 4 FL
1800 fade/outs	1200 WDTN 2 OH 1075	1822 Cuba 3 (//ch2)
21 Es 0910 unids channel 2	(MUF 89.9-1211)	1858 unid channel 4
0929 KTWO 2 WY 1015	1230 WCCO 4 MN 1110	(Unstable beat)
0959 KGAN 2 IA 945	KSTPt 5 MN	1900 soon fade/out
1258 KLNE 3 NE 785	1237 KTCat 2 MN	27 Es 0555 unid ch 2 ne
1259 KEME 3 ND 1200	1259 KKMA 2 ND 1225	(spotty to 0649)
KPRY 4 SD 1035	(MUF 107.9-1314)	0651 WCEB 2 SC 1120
KFYrt 5 ND	1507 WITW 2 IN 935	0659 WFMY 2 NC 1175
KPLot 6 SD	1513 KDLO 3 SD 1070	0820 fade/outs
(MUF 94.5-1302)	1540 WDTN 2 OH 1075	0915-20 unid ch 2 Sp
1303 KSRRE 6 ND 1300	1600 fade/outs	1040-1100 unid ch 2 w
1332 KOTAt 3 SD	25 Es 0810 unid ch 2 ne	(Mexico)
1359 KIDK 3 ID 1215	0822 KVBC 3 NV 1050	1215-1245 unids ch 2 w
KTWO 2 WY 1015	0839 KTVXt 4 UT	(Spanish south)
(MUF 107.9-1422)	0852 KUTV 2 UT 1080	1745 unids channel 2
1520 apx fade/outs	0856 KIDKt 3 ID	1759 KGFE 2 ND 1240
1740-1840 unids ch 2,3	0917 KWGnt 2 CO	1804 KKMA 2 ND
1858 KUSD 2 SD 920	0929 unid ch 2 Sp s	1821 KEME 3 ND 1200
2000 KWGN 2 CO 810	0946 KTVKt 3 AZ	1822 KPRYt 4 SD
2120 fade/outs	(MUF 88.9-0954)	1829 KNOP 2 NE 815
2329 unid channel 2 w	0959 KGAN 2 IA 945	1833 KMTVt 3 NE
22 Es 0810-0815 unids ch 2 n	1010 XHAQt 5 BCN	2005 fade/outs
0830-0900 spotty	1012 XETVt 6 BCN	2103 YSU t 4 ES
0959 WDTN 2 OH 1075	1020 CKND2t 2 MB	2112 TGV t 3 GU
1039 KNMZ 2 NM 600	1021 KPRYt 4 SD	(MUF 88.1-2116)
1050-1320 unids ch 2-4	1029 KKMA 2 ND 1225	2120 YSR 2 ES 1200
1601-1710 unids ch 2,3	1030 KEME 3 ND 1200	2205 fade/outs
1713 WITW 2 IN 935	1059 KTWO 2 WY 1015	28 Es 0744 unids chs 2-5
1758 WKYC 3 OH 1250	KOTA 3 SD 1040	0758 WCCot 4 MN
1807 WDIVt 4 MI	KTVS 3 CO 815	0759 KGFE 2 ND 1240
1942 fade/outs	1108 KDLO 3 SD 1070	KTCA 2 MN 1110
23 ms 0441:15 WAVE 3 KY 945	1109 WITW 2 IN 935	0829 KMTV 3 NE 830
0457:50 WDAF 4 MO 700	1113 WTTVt 4 IN	KGAN 2 IA 945
Es 0625 unids chs 2-4	(MUF 106.5-1134)	0970 WMCA? 5 ??
ms 70759 KMID 2 TX 275	1159 KNBC 4 CA 1190	(MUF 109+ @1036)
Es 0759 KKMA 2 ND 1225	WESH 2 FL 1055	1204 KOTA 3 SD 1040
0808 KPRYt 4 SD	KCBS 2 CA 1190	1227 KWGN 2 CO 810
0846 KTVQ 3 MO 835	WTVJt 4 FL	1310 apx fade/outs
(MUF 89.3-1006)	1229 WMAB 2 MS 615	1955 unids channel 2
1014 KDKA 2 PA 1280	WBTV 3 NC 1105	2013 unid channel 4
1031 WTAEt 4 PA	1259 WSJK 2 TN 1010	2027 KBMEt 3 ND
1059 KDLH 3 MN 1250	1345-1410 lull	2059 KKMA 2 ND 1225
1139 WDTN 2 OH 1075	1432 KKMA 2 ND 1225	(MUF 89.3-2106)
1245 WKYC 3 OH 1250	1500 KTVQ 2 MT 1245	2117 KPRYt 4 SD
(MUF 103.1-1304)	1657 KUSD 2 SD 920	2136 KTVQ 2 MT 1245
1405 WITW 2 IN 935	1710 KDLO 3 SD 1070	2200 apx fade/outs
1628 KSNC 2 KS 615	(MUF 92.5-1713)	29 Es 1859 KGAN 2 IA 945
1653 KLNE 3 NE 785	1718 KSNC 2 KS 615	1913 WCCot 2 MN
1659 KPRY 4 SD 1035	1729 KNOP 2 NE 815	KIMTt 3 IA
KNOP 2 NE 815	1759 KOTA 3 SD 1040	KTCA 2 MN
(MUF 89.9-1702)	(MUF 89.3-1802)	KUSD 2 SD 920
1730 KTVS 3 CO 815	1833 KTVS 3 CO 815	2019 WBAY 2 WI 1190
1732 KOTA 3 SD 1040	1836-2017 unids ch 2-4	2025 fade/outs
1959 KGFE 2 ND 1240	2100 apx fade/outs	30 Es 0928 unid channel 2 n
KIMT 3 IA 985	26 Es 0859 WPBT 2 FL 1150	0958 KBME 3 ND 1200
	WEDUt 3 FL	KTVQ 2 MT 1245

Pat Dyer (continued)

30 Es 1000 KNAZ 2 AZ 855	30 Es 1029 KKMA 2 ND 1225	30 Es (MUF 89.3-1123)
KVOAt 4 AZ	1059 KIMT 3 IA 985	1200 KDLO 3 SD 1070
1015 KPRYt 4 SD	1118 KOTA 3 SD 1040	1320 fade/outs
	1120 KIVVt 5 SD	1650-1700 unids ch 2 n

A very busy June. I forgot to mention last time that the June 1-2 tropo ID's were made a lot easier in many cases due to the superimposed locations/phone numbers for the telethon that weekend.

Channel 4 has now gone back to full power, and channel 5 went to reduced levels (while cleaning, sandblasting, etc.). Hard to judge the intensity of the Es with channel 5 so easy to get CCI.

Making both the Central States VHF Society Conference in Tulsa (July 25-28) and the WIFDA Convention (my first) in New Orleans the next weekend didn't give me much time to get the reports here more up to date. 73, Pat, WA5IYX

Fred McCormack, 135 Prairiewood Drive, Fargo, ND 58103

CDT

Equipment: VHF: Broadmoor 9" black & white, Winegard CS-4053; UHF: Teknika 6510 tuner, Winegard CH-9095, Blonder-Tongue CMA-Uc pre-amp; Alliance rotor.

August 1985

2 Es 2130 KBCI 2 ID 960	10 tr 2258 Sprgrld MO U's t	11 tr 0226 WFLDt 32 IL
(MUF 104.3-2133)	11 tr 0022 WCiUt 26 IL	0926 WKOWt 3 WI
10 tr 1029 KRIN 32 IA 395	0041 WTHR 13 IN 715	1000 KRIN 32 IA 395
2217 Peoria IL U's t	0052 KWNL 7 IA 395	1029 KCBR 17 IA 385
	0222 WQAD 8 IL 500	1059 KCCI 8 IA 385
	0223 WHO 13 IA 385	1130 KDIIn 11 IA 385

This tropo opening was very unusual - very frustrating. It doesn't seem reasonable to describe an opening with 700 mile VHF as mediocre, but it largely was. WTHR-13, while it was in, was as good as most of the signals received. I spent the entire night watching snowy signals pop up and fade out before ID. Logic indicates the signals were coming from Springfield, Missouri, northern Illinois, and Wisconsin; in addition to Iowa which was the best. KDIN-11 was identified through local KTHI-11.

Worldwide TV-FM DX Association



PHOTO-NEWS

David J. Nieman
12284 Nice Road
Akron, NY 14001
U.S.A.



WSPA-07 Spartansburg, SC

338 mile tropo no date (JC)



WPDE-15 Florence, SC

313 mile tropo no date

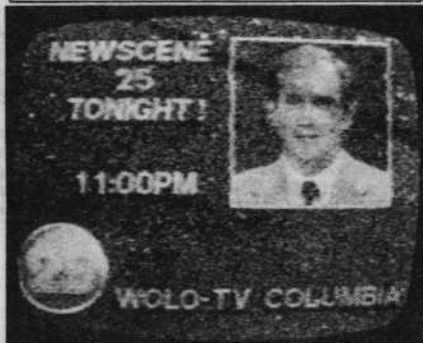
(JC)



WRJA-27 Sumter, SC 261 mile
tropo no date (JC)



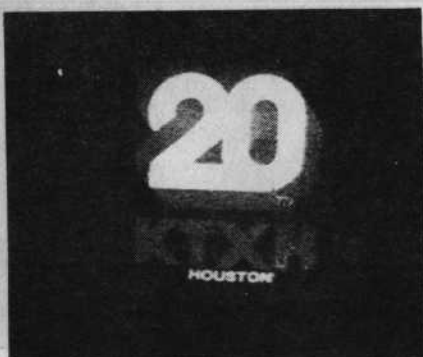
WIS-10 Columbia, SC 270 mile
tropo no date (JC)



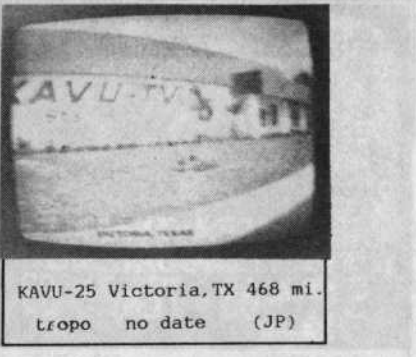
WOLO-25 Columbia, SC 263 mile
tropo no date (JC)



WSOC-09 Charlotte, NC 347 mile
tropo no date (JC)



KTXH-20 Houston, TX 515 mile
tropo no date (JP)



KAVU-25 Victoria, TX 468 mi.
tropo no date (JP)

Thanks to, John Combs-Jacksonville, FL (JC) and to Jim Pizzi-Lovington, NM (JP) for supporting this column. Guys; I have so many of your great DX photos, that if I were to use them all. There'd be no room for anyone else's. So I hope you don't mind if I take a sampling of them. Dave

EASTERN TV-DX

John F. Combs
2831 Selma
Jacksonville FL 32205
(904) 387-2367

October 1985

Deadline: 1st

GREETINGS!

No, you haven't been drafted, hi! Just thought I'd waste a few lines of VUD space to tell all concerned a bit about myself by way of introduction. I am 27 years old, originally from New Jersey, and have lived in Florida since I was 12, except for a brief sojourn in Ohio during my college days (daze?). I have been active on and off in TV-DX for most of my time in Florida. My interest in TV-DX was initially stimulated by two things: (1) Glenn Hauser's article on TV-DX which appeared in TV Guide in the late 60's and (2) seeing KQTV-2 by E-skip one summer while in Vermont. The dramatic impact of seeing this TV signal from 1000 miles away got me hooked. I have a degree in Radio-Television (which I have never used) and am currently employed by an inventory service. Enough about me, on to reports!

Bill Nollman, Box 184, RFD #1, Fitchville CT 06334

(EDT)

"This is my first attempt at TV DXing, so here goes...In January I bought myself a Regency HX-1000 scanner and soon found the joys of E-skip to Missouri, Florida, Tenn., etc. Unfortunately it took me until June when Tom Yingling and I talked about a super day of Es (June 23rd) and how he was getting great reception into Wisconsin. Finally something upstairs clicked and I realized that if Es are up past 45 MHz...then the MUF might just be up near Ch. 2 or higher!

Next time I was picking up good Es on the scanner I decided to hook up the CM3617 to a cruddy little B&W TV and guess what--WBEM Ch. 2 was coming in clear as day! I couldn't believe it! Since then I've seen approximately 29 stations via E-skip and have since "switched" the scanner to a TV-DX early warning system with freqs like 42.06--Missouri State Police, 39.46--all of IL, and 45.62--Pasco City FL as the best...

However, I haven't seen ANY Es in almost 3 weeks (nor I--jfc)...So what does a DX-hungry DXer do? He fixes the AC/DC TV he screwed up last year and heads for the hills to try another frontier he has yet to attempt: UHF tropo. I went up Wawecus Hill Rd. and found good reception...about 1 1/2 miles west of my house and appx. 700 feet above average terrain.

As you can see by my first few attempts (I was just seeing what would come in--not really DXing) this spot...is prime DXing (at least it's better than at my house). Unfortunately, I'll be back at school soon--Univ. of Hartford CT and in the bottom floor of a brick dorm (ouch--jfc) where multipath is so bad that Ch. 61 at 1 or 2 miles away has more ghosts than they have watts output! Maybe this year they'll let me put simple antennas on the roof (4 floors high)--I was refused last year.

That's about all from here. I might try a hill by the Montville CT TV (Cable) towers... it's very high and about 2 miles from the ocean! Let's go humidity! And fog! Great DXing ...and have a great summer (what's left of it)."

July 1985

- 2 Es 2030 WBEM-2 IL 815
Chicago
- 7 Es 1100 WPBT-2 FL 1200
Miami
- 1200 WESH-2 FL 990
Daytona Beach
- 1230 WEDU-3? FL T
- 1400 WSJK-2 TN 685
Sneedville
- 1600 KTCA-2 MN 1075
St. Paul
- 8 Es 1715 KJRH-2 OK 1320
Tulsa
- 1730 KTVI-2 MO 975
St. Louis
- 1752 KYTV-3 MO 1160
Springfield
- 1800 KMOX-4 MO 975
St. Louis
- 1800 KTVY-4 OK 1425
Oklahoma City
- 1812 KSDK-5 MO 975
St. Louis
- 11 Es 1900 KUSD-2 SD 1265
Vermillion

July 1985

- 11 Es 1912 unID-2 "ment.
Thunder Bay & Chs.
2 & 5"(I'd say
CKPR-2 Thunder Bay
ONT--jfc)
- 1930 KQTV-2 MO 1190
St. Joseph
- 2000 WBEM-2 IL 815
- 2100 KTCA-2 MN 1075
- 2126 WCCO-4 MN 1075
Minneapolis
- 2130 KUSD-2 SD 1265
- 14 Es 1206 WSB-2 GA 860
Atlanta
- 1230 WMAB-2 MS 1090
State College
- 1300 WRBL-3 GA 945
Columbus
- 14 Es 1300 WLBT-3 MS 1190
Jackson
- 1314 WCBI-4 MS 1050
Columbia
- 1348 KETS-2 AR 1190
Little Rock
- 1817 WESH-2 FL 990

July 1985

- 14 Es 1828 WVL-4 IA 1285
New Orleans
- 1859 WUFT-5 FL 1010
Gainesville
- 1921 WCBD-2 SC 750
Charleston
- 15 Tr 1630 WMUR-9 NH 110
- 1630 WENH-11 NH 160
- Es 1750 unID-2 SS "ment.
CTV + Alka-
Seltzer ad"
- 1754 WBTV-3 NC 650
Charlotte
- 1757 WSB-2 GA 860
- 1800 WSJK-2 TN 685
- 17 Tr No time given...
WBOC-16? MD T
- WLIW-21 NY 100
- WCFB-28 MD 290
- Salisbury
- WNJM-50 NJ 120
- Montclair
- WILG-55 NY 40
- Riverhead

(continued on next page...)

EASTERN TV-DX

July 1985
 17 Tr ---- WCVX-58 MA 75
 Vineyard Haven
 30 Es 1820 KGAN-2 IA 990
 Cedar Rapids
 1830 WBBM-2 IL 815
 1857 KTVO-3 MO 1050
 Ottumwa IA/Kirks-
 ville
 1922 WCIA-3 IL 845
 Champaign
 1924 WTWC-2 IN 815
 Terre Haute

Nollman, continued--

July 1985
 30 Es 1926 KTVI-2 MO 975
 1930 KTV-3 MO 1160
 1937 WDAF-4 MO 1190
 Kansas City
 1941 KMOX-4 MO 975
 2100 KJRH-2 OK 1320
August 1985
 12 Tr 2200 WHCT-18 CT 35
 Hartford
 WCDC-19 MA 85
 Adams
 WLIW-21 NY 100
 Garden City

August 1985
 12 Tr 2200 WXTV-41 NY 115
 Paterson NJ
 (Not Secaucus--jfc)
 WEDW-49 CT 60
 Bridgeport
 WVJV-66 MA 60
 Marlborough
TOTALS: 23 States
 48 VHF
 23 UHF
 29 Es
 71 Total

Equipment: (Home) Emerson B121 B & W TV, Channel Master Model 3617 Antenna @30 ft. AGL, RG-59 coax and low-loss Jerrold baluns.

(Mobile) Panasonic TR-329B AC/DC B & W TV, rabbit ears mounted on magnetic CB mount on roof of car. (Tres unique!--jfc)

(A good first report, Bill, and I hope many more are to come. I have taken the liberty of forwarding some of your more promising unIDs to the CGI column. I also deleted tropo less than 100 miles, unless new. Maybe you should invest in a 4-bay UHF antenna for your hill-top trips, or something similar that would be easy to hand-hold. Just have a good story ready when the local gendarmes inquire as to your activities, hi! It's too bad you can't get in a dorm room on the 4th floor, or at least higher than the basement, where a 4-bay stuck out the window might get some results! Hope you send some of your photos on to Dave Nieman for the Photo-News column--jfc)

Bill Townshend, 4500 Conn. Ave. NW #901, Washington DC 20008 (202) 966-8046 (EDT)

July 1985	July 1985	August 1985
29 Tr 0900 KYW-3 PA 2255 WHRO-15 VA 2256 WPHL-17 PA 2257 WVIR-29 VA	29 Tr 2259 WRBY-65 NJ 2300 WNJT-52 NJ 2345 WMGM-40 NJ	14 Tr 0929 WTVZ-33 VA 15 Tr 0743 WYAH-27 VA 0800 WIVE-51 PA

"I finally got all 12 VHF channels covered. The 2245-2345 reports above were from my apartment building roof, just 16 steps up from my pad. These reports from an area which usually stinks out loud as far as this kind of DXing is concerned! I usually get a signal, albeit weak, from very local WRC-4 all over the UHF band on my Portavision-SS (12-778). Stations seen/heard by states: VA-15, MD-13, PA-13, DC-9, NJ-4, NC-2 and DE-1. Total 57. Most distant, WLXI-61 Greensboro NC on 4/19/85 at 260 ml./416 km. 73's."

John F. Combs, 2831 Selma, Jacksonville FL 32205 (904) 387-2367 (NEW NUMBER) (EDT)

July 1985	August 1985	August 1985
27 Tr 2035 WRJA-27 SC 261 28 Es 1150 KMID-2 TX 1221 1156 KACB-3 TX 1113 San Angelo Tr 2130 WTVX-34 FL 234 2255 WXEL-42 FL 272 2255 WPTV-5 FL 272 30 Es 2130-2220 Noted, no IDs 31 Es 0908 CBFT-2 Pq 1138 (Phillips TP) 0925 XHCH-2? CH T 1013 XEPI-5? CH T August 1985 1 Es 0814 CBFT-2 Pq 1138 (TP agn--gone by 0820) (Es in & out on 2 all dat today...) 6 Es 0856 unIDs-2,3 14 Tr 0655 WLTX-19 SC 262 0655 WOLO-25 SC 263	14 Tr 0655 WRLK-35 SC 267 0655 WATG-26 SC 215 2150 WEBA-14 SC 200 2150 WATG-26 SC 215 15 Tr 0840 WLTX-19 SC 262 2322 WLTX-19 SC 262 2322 WOLO-25 SC 263 16 Tr 1045 WTGS-28 SC 174 Hardeeville (Testing w/ID slide) 1955 WJKA-26 NC 335 1955 WRJA-27 SC 261 1955 WHMC-23 SC 294 1955 WFDE-15 SC 313 2035 WLTX-19 SC 262 2230 Columbia, Augusta Us 17 Tr 0843 Columbia Us 18 Tr 1925 WJKA-26 NC 335 19 Tr 0842+ SC Us 14,19,25,27 20 Tr 0038 WATG-26 SC 215	OUT-OF-SEQUENCE (oops...) 13 Tr 0050 WATG-26 SC 215 0050 WIS-10 SC 270 0135 WMAZ-13 GA 201 Macon 0135 WRBL-3 GA 229 BACK TO NORMAL (?) 25 Tr 1825 W69AY FL 55 1859 W57AN FL 80 1859 W49AI FL 110 1859 W29AB FL 77 1905 W61AK FL 106 Inverness (WTOG-44) 26 Tr 0035 WLTX-19 SC 262 0035 WOLO-25 SC 263 27 Tr 0230 W50AC FL 175 31 Tr 0045 WLTX-19 SC 263 0045 WATG-26 SC 215 0930 W29AB FL 77

I have raised my 5' dish to 32' AG, using RG-6/U cable. More frequent scatter now from Columbia, Augusta, etc. VHF is not up right now; I need to mount it on a separate rotor. July 31st interesting for seeing Canada and Mexico within 13 minutes of each other!

I hope to continue the tradition of quality that marked Bill Draeb's reign as editor of this column. Let me know your ideas and criticisms! And keep reports coming! 73.....JOHN

WTFDA CLUB SUPPLIES



PLACE YOUR ORDER NOW!! PLACE YOUR ORDER NOW!! PLACE YOUR ORDER NOW!!

VHF-UHF DIGEST BACK ISSUES -- AVAILABLE JANUARY 1983 TO THE PRESENT \$1.25
 A FEW AVAILABLE BEFORE JANUARY, AT \$1.00

NOW AVAILABLE ONLY \$6.95

order your copy TODAY!



ALL NEW REVISED QSL REPORT FORMS ----- FOR REQUESTING QSLs (VERIFICATIONS) FROM FM or TV STATIONS, BLK on YEL \$2.00

VHF-UHF DIGEST BOXERS ----- ATTRACTIVE CASES DESIGNED TO KEEP YOUR COPIES OF THE VUD ORGANIZED. \$2.00 3-\$5.00

ORDER FORM		HOW MANY?	PRICE (each)	AMOUNT
NAME	NAME OF ITEM			
STREET				
CITY				
STATE	ZIP			
SEND YOUR ORDER TO				
WORLDWIDE TV-FM DX ASSN. POST OFFICE BOX 514 BUFFALO, NY 14205 U.S.A.			TOTAL	
			SEND CHECK OR MONEY ORDER (U.S. FUNDS)	

THE FOLLOWING ITEM CAN BE ORDERED DIRECTLY FROM THE SUPPLIER

FM ATLAS AND STATION DIRECTORY (9th edition)	-----	THE ONE EVERYONE HAS TO HAVE FOR SUCCESSFUL FM DXING. THIS IS THE SINGLE MOST COMPLETE SOURCE OF INFO ON THE FM BROADCAST BAND.	\$8.75 ppd
ORDER DIRECT FROM FM ATLAS--ADOLPH, MINNESOTA 55701 U.S.A.			