

From The STAFF

W.T.F.D.A. Headquarters, P.O. Box 514, Buffalo, NY 14205

NOTICE TO ALL COLUMN EDITORS...By the time you read this, you'll have already begun work on your March VUD columns; as of this writing, no-one has volunteered to be the VUD's new Editor-in-Chief. Therefore, we've made arrangements with a group called Layout Associates; they will takeover with the April issue. Layout Associates will require that full pages be sent--they won't fill in blank spaces. In addition, any column which isn't considered camera-ready (dirty because of too much glue used) will be returned. Because printing requires that the total number of VUD pages be in multiples of four, some columns may have to be held until the following month to meet these requirements. Last of all, the VUD front covers as we've come to know them may end with the March issue, to be replaced with FROM THE STAFF if no volunteers are found between now and the March 15th deadline for the April VUD.

OTHER CLUB CHANGES...As can be seen above, the VUD will no longer have an Editor-in-Chief; in other words, it will be edited by committee. These changes are being made necessary by several things. Dave Nieman is stepping down as VUD editor; club co-founder Morrie Goldman has resigned his board of directors position and stepped aside as Literature Manager; VUD Publisher Bill Thompson has assumed other duties; and just about everyone involved did not want the promptness or appearance of the VUD to be adversely affected. You'll continue to see the VUD early each month, but we still will be in constant need of volunteers. Morrie Goldman's FEEDBACK editorial on page 17 will give you ideas about what kind of help we're seeking.

YES, WE HAVE THOSE BACK ISSUES!...Thanks to the efforts of Mike Hogan, a number of back issues from 1982 have turned up, and are available from WTFDA Supplies. Post-1981 back issues are \$1.25 each, as a February-only special, they are available for a quantity discount: any 10 (your choice) for \$11, or any 20 (your choice) for \$20. See page 39 for details on how to order them.

NEW LONGWAVE GUIDE...Winter finds many club members tuning the longwave bands for DX, which can be quite spectacular at this time of year on the low frequencies. The 1986 AERO/MARINE BEACON GUIDE is now available from Ken Stryker, 6350 North Hoyne, Apt. 202, Chicago IL 60659. It's reasonably priced and filled with information on over 6100 beacons on longwave, including station powers and coordinates. All longwave DX fans will want a copy of this book! Contact Ken for further details.

MAILBOX: Time to hear from the silent majority.....	3
TELEVISION NEWS: Network changes and Caribbean news.....	4
FCC FM NEWS: More on the early days of FM.....	11
ANARC UPDATE: Should WTFDA host the ANARCON?.....	16
FEEDBACK: Morrie Goldman hangs up his hats.....	17
VHF UTILITY DX: Focus on highway department frequencies.....	18
SPECIAL REPORT: Anselmo Roccaforte has more news from Argentina.....	22
EASTERN TV-DX: October 3rd tropics all nighter; more on FL TV pirate.....	24
QSL CORNER: E-skip and translator QSLs.....	28
WESTERN TV-DX: Central American Es seen in Texas.....	29
PHOTO-NEWS: 10 slide of Texas' new ch 35.....	30
TECHNICAL TOPICS: Form DD-2371, boo boo, and audio amp project.....	31
NORTHERN FM-DX: Tuner specs needed; IDing CBCs.....	33
SOUTHERN FM-DX: A profile on St. Louis' FM.....	37

Logos on front cover were sent in by Richard Eddie.



MAILBOX

Alan Hyams
P.O. Box 130
City Island Sta.
Bronx, NY 10464

The MAILBOX column has been absent from the pages of the VUD for the last few months, but it isn't because of your humble editor taking another vacation. Rather, if the truth be told, I'm just not receiving any mail.

It could be possible that the mail isn't coming in simply because the column has been less visible of late, but I tend to think that it has more to do with the lack of club controversy.

Last year, the logging procedures debate along with some religious controversy spurred some lively comments from many club members. Since those issues have been settled (at least to the point where everyone who wanted to, had his say) the mail has stopped coming in.

It was recently suggested to me that if I wanted the mail to start coming in again, I ought to stir up some new DX debate. I'm not sure I want to do that. For one thing, some of the 'debates' suggested to me seem pretty petty, but aside from that, I don't think that I should have to drum up commentary where none had existed.

What I'm trying to say is that the MAILBOX column is still here. If you have something to say, by all means send me a letter. If not, I'll be content to do the column however periodically the mail dictates.

* * * * *

I'd like to thank Doug Dornbos for his kind words about me in his column of a few months back. We should all be able to agree to disagree.

If anyone has written me a letter within the last month or so, it may have been returned. This was due to my own negligence in not keeping track of my mailbox's expiration date. I apologize. At any rate, the box is back in my hands now, and the address up top, the same one that I've always had, is still valid.

Finally, I'd like to congratulate departing Editor Dave Nieman on the fine job he's done over the last few years. Let's hope the new editor, whoever he may be, will maintain the high VUD standards.

Till next time, 73.

AH

LIKE YOUR CAR...WTFDAs
MAILBOX CAN'T RUN ON
EMPTY!

TELEVISION NEWS

Bill Fabber, editor
336 Atlantic Street
Bridgeton, N.J. 08302

TELEVISION NEWS - page 2

FEBRUARY, 1986

CHANGES IN THE TABLE OF CHANNEL ASSIGNMENTS

TX Mineola: add 63+
NM Caprock: add 17z
CA San Clemente: add 26z
CA Brawley: delete*26z; add *48+ (to accommodate San Clemente assignment)
MI The FCC denied a petition by the University of Michigan to reconsider its imposing a 3-mile-east site restriction on *58 at Ann Arbor when it assigned 43- at Battle Creek. This restriction would prevent a future licensee from using the tower of WIHT-TV, ch. 31, or WUOM(FM), both of which are west of Ann Arbor. More comments on the use of existing towers by educational stations will appear under FORUM.

CONSOLIDATED HEARINGS

CA Santa Barbara; ch. 38; application by Coast TV has been reinstated.
WA Bellingham; ch. 64; oral hearings were scheduled to present arguments against the FCC's grant of a CP to Prism Broadc'g.
MS McComb; ch. 28; Southwest Communications; Southwest Mississippi Television Company; Commonwealth Venture Systems; Robin C. Brandt. Southwest Comm. is 9 miles short-spaced to vacant channel 42 in Natchez, MS; Brandt is 2.88 miles short-spaced.
GA Dalton; ch. 23; Family Television of Dalton Inc.; Dalton Television Associates Ltd.; Southern Television Inc.
AR Little Rock; ch. 42; Magnolia Communications (4.4 miles short-spaced to KJTM-TV, ch. 38, Pine Bluff, AR); Maumelle TV (14.5 miles short-spaced to vacant ch. 28 in Russellville, AR, but there is currently a petition to change ch. 28 to ch. 54); Leininger-Geddes Partnership; Capitol Communications Corporation. There is also a petition to change 42 in Little Rock to 47; this could eliminate both of the above short-spacings.
PA Bethlehem; ch. 60; Ashford Communications; Sonshine Family TV Inc.; Bethlehem Broadcasting; Haughton Television; Lehigh Valley Broadcasting and Communications; William J. Kimble.
TX Longview; ch. 54; Ashley Broadcasting; Etelex Telemedia; Channel 54 Broadcasting Company. The three are short-spaced to KLMG-TV, ch. 51 in Longview, TX, respectively by 10 miles, 11 miles, and 6 miles.
WA Bellevue; ch. 51; C.R. Pasquier Associates of Bellevue; Bellevue Telecasters Ltd.; Bellevue Broadcasting Company; Rainier Broadcasting Company.
NV Las Vegas; ch. 33; Classic Vision, Inc.; 4-A Communications; Lucky 33 TV; El Sol Broadcasting; M.W.D. Inc; Venture Broadcasting Company.
NC Greenville; ch. 38; Community Service Telecasters Inc.; East Coast Media Ltd.; Winard Broadcasting.

LONG ISLAND, NEW YORK

Some months ago the Long Island Coalition for Fair Broadcasting asked the FCC to reallocate one of the New York City VHF assignments to somewhere in Long Island. The Coalition also asked the FCC to deny the license renewal of WNEW-TV because of lack of coverage of Long Island events. Now they are asking the owners of WNEW-TV to change its community of license.

LOS ANGELES COUNTY SHERIFF

Sheriff Sherman Block is still trying to get the FCC to take some of the television spectrum away for use by his department. But when he asked a White House official to put some pressure on the FCC, the FCC reprimanded him and threatened sanctions if he tried it again.

APPLICATIONS FOR NEW TELEVISION STATIONS

CH	ERP	HAAT	STATE/CITY/APPLICANT
22	675	219	TX Wolfforth; Randy Chandler Ministries
50	1000	477	AL Opelika; Virginia L. Fruits
8	316	2339	CA Fort Bragg; Virginia Fruits
8	215	2445	CA Fort Bragg; Capitol Foothills Broadcasters
8	229	2425	CA Fort Bragg; Mad River Bc'g Co.
41	735	1153	CO Denver; Colorado Christian College
24	5000	2000	CO Steamboat Springs; Constance J. Wodlinger
18	619	292	FL Islamorada; Islamorada Educators Broadcasting Company
9	186	276	FL Marathon; Marathon Educators Broadcasting Company
57	400	693	GA Atlanta; Acorn Television in Action for Communities
51	5000	1000	NY Batavia; Genesee Communic'ns
41	5000	1424	CA Ventura; Marin TV Services Partners Ltd. (amended)
41	5000	1176	VA Ventura; Novato Broadcasting Corporation (amended)
60	1795	1756	AL Dothan; Broadcast Associates
18	3000	1939	MT Butte; Montana Western Corp.
14	3236	896	TX Llano; Llano Broadcasting Co.
63	n.c.	1456	NJ Newton; Newton Television Ltd (amended)
63	n.c.	1722	NJ Newton; Newton Television Inc. (amended; formerly Herlinda Valdez)
32	n.c.	1978	SC Myrtle Beach; South Carolina Broadcasters Ltd. Partnership (amended)
6	100	591	MT Billings; Mark L. Wodlinger
54	5000	372m	CA Avalon; Coastal Broadcasting Partners (372 meters?)
51	1000	1118	NY Batavia; M&M Partnership
22	800	455	TX Wolfforth; Garcia Communications

APPLICATIONS DISMISSED

FL Orlando; ch. 27; Elim Broadcasting (failure to prosecute its application)
NY Syracuse; ch. 56; Non-profit Television Concepts
TN Memphis; ch. 50; Jack Townes; Wolf River Broadcasting (failure to prosecute).

WA	Bellevue;	ch. 51;	J&J Partners.
HI	Honolulu;	ch. 5;	Media Central Inc. (failure to prosecute its application); Ka'Ikena Lani TV Corporation (joint request for settlement agreement).
NY	Syracuse;	ch. 56;	Non-Profit Television Concepts (failure to prosecute).
CO	Pueblo;	ch. 32;	F&M Broadcasting Inc.; Pueblo Family Television.
CO	Fort Collins;	ch. 22;	Fort Collins Telecasters. (Initial decision; application of Eagle 22 Ltd. was given preference on integration grounds)
FL	Gainesville;	ch. 61;	Central Florida Broadcasting Corporation; Gainesville Telecasters Ltd.; Gainesville Television Group Inc.
NV	Reno;	ch. 11;	Peavine Inc.; Reno Telecommunications Company; Glorja Hammers.
TX	Decatur;	ch. 29;	Chavela Broadcasting Inc; Wise County Messengers Inc.
TX	Fort Worth;	ch. 52;	Rebecca Rangel Henton.
NE	Omaha;	ch. 15;	Channel 15/Omaha; Family Television Inc.; Koplak Communications Inc.; Omaha TV 15 Inc. All applications dated back to 1979; th is is a Review Board decision upholding an initial decision back in August, 1983.
TX	San Antonio;	ch. 23;	San Antonio Educational Television Inc.
FL	Tice;	ch. 49;	Reginald L. Duff; Florida Coast Communications Company; Florida Telecasting Inc.; Ralph W. Gabbard; Qualivision of Lee County Inc.
TN	Cookeville;	ch. 28;	Robin C. Brandt; Gerald R. Roberts.
TN	Memphis;	ch. 13;	Professional Broadcast Group, Inc.
FL	Fort Pierce;	ch. 21;	Florida Educational Television Inc.
NJ	Burlington;	ch. 48;	Burlington TV Inc. (Joint request by Burlington TV and Adelphi Broadcasting Corporation)
TX	San Antonio;	ch. 60;	Hispanic Broadcasters of San Antonio Inc. (at its request).
VA	Roanoke;	ch. 60;	Roanoke TV 60 Broadcasting.
ME	Presque Isle;	ch. 62;	Allan H. Weiner (at his request).
LA	New Orleans;	ch. 49;	Horizon Broadcasting Ltd. (joint petition for settlement agreement).

49	5000	800	FL Tice; Tice Television Company
46	5000	1534	NC Belmont; Metro-Crescent Communications Inc.
16	5000	1038	TX Lubbock; Lubbock TV 16 Broadc'g
35	104	510	MI Bad Axe; Delta College
15	5000	1077	NE Omaha; Mid-America Broadcasting Inc. (Review Board decision of 8/29/83)
23	1312	1371	TX San Antonio; Hispanic Community Educational TV Inc.
29	5000	910	TX Decatur; Karen L. Hicks (summary decision)
28	1051	427	TN Cookeville; Sandra J. Lewis
25	2786	2510	CA Watsonville; California Community Television Network
60	5000	1555	VA Roanoke; Southwest Virginia Television

CONSTRUCTION PERMITS CANCELLED			
WA	Spokane;	KSMW,	ch. 34
NC	Goldsboro;	WYED,	ch. 17
VI	Christiansted;	WVCW,	ch. 15.

CONSTRUCTION PERMITS REINSTATED			
AL	Gadsden;	WTJP,	ch. 60
MO	St. Joseph;	KTAJ,	ch. 16
WY	Cheyenne;	KLWY,	ch. 27

LIFETIME OF CONSTRUCTION PERMITS EXTENDED			
The FCC extended the time period of a TV construction permit from 18 months to 24 months, hoping to reduce the number of applications for extension of time, and allowing a more realistic time period to construct a TV station. Extensions shall be granted upon only three circumstances: (1) construction is complete and testing is under way; (2) substantial progress has been made (site acquired and cleared; equipment on order or on hand); (3) no progress made for reasons clearly beyond the control of the permittee (governmental, zoning problems, etc.) but the permittee has taken all possible steps to resolve the problem. Along with the longer construction permits, the FCC is getting stricter on the practice of applications to modify construction permits beyond a few months of the permit's grant.			

APPLICATIONS TO MODIFY CONSTRUCTION PERMITS			
55	5000	731	NY Amsterdam; WOOD
44	1951	1228	TX Harlingen; KLUJ
23	5000	967	IN Marion; WMC
68	1380	1129	AL Birmingham; WCAJ
49	2150	2738	CA Visalia; KNXT
56	4570	1150	KY Danville; WKY-TV
52	1355	601	OK Oklahoma City; KSBI
63	n.c.	1040	IN Bloomington; WIIB
41	205	297	LA Alexandria; KHCA

CONSTRUCTION PERMIT MODIFICATIONS GRANTED			
23	1380	1659	CA Arcata; KREQ
64	5000	1572	CA Barstow; KVV
39	560	498	LA West Monroe; KMCT-TV
34	1175	1025	TX Beaumont; KITU
24	4453	1110	TX Odessa; KPEJ
68	1380	1129	AL Birmingham WCAJ (CP granted 9/23/82 by Review Board reversal of initial decision. I never saw record of call letters, so I assumed the CP was still being contested.)

CONSTRUCTION PERMITS GRANTED			
51	5000	932	AR Rogers; MCC Communications
55	1000	1301	OH Hillsboro; Pioneer Broadcasting Limited.
12	316	530	SD Huron; John R. Powley (summary decision)
30	2820	2340	CA San Bernardino; Maranatha Broadcasting Company (reversing prior decision which had granted interim broadcasting authority to Angeles Broadcasting. Angeles had been given preference on integration grounds, but with the departure of its president, it no longer had that preference.)
22	?	?	CO Fort Collins; Eagle 22 Ltd.
32	1850	2140	CO Pueblo; tv/USA Pueblo Ltd.

32 ? 791 PR Aguadilla; WKKU
 21 4207 ? VA Lynchburg; WJPR (CP granted
 3½ years ago)

APPLICATIONS FOR CHANGES IN FACILITIES
 10 6.16 ? CO Montrose; KREY-TV
 35 661 ? OH Lima; WLIO
 18 3273 1110 CT Hartford; WHCT-TV
 7 316 2000 LA Lake Charles; KPLC-TV
 9 316 1732 TN Chattanooga; WTVG
 7 18.9 924 AK Anchorage; KAKM
 11 316 2000 AZ Tucson; KMSB-TV
 8 79.4 ? OK Sayre; KVIJ-TV
 9 316 ? WA Seattle; KCTS-TV

FACILITIES CHANGES GRANTED
 FL Jacksonville; WAWS, ch. 30; granted CP to
 raise ERP from 2750 kw max/759 kw hor to
 5000 kw max; 991' AAT/997' AG/1012' ASL
 (3½' lower than existing); same TL.
 OH Zanesville; WHIZ-TV, ch. 18; granted CP to
 change ERP from 212 kw to 588 kw max.;
 533' AAT/477' AG/1387' ASL (7' lower AAT/
 29' lower AG/23' higher ASL. neat trick for
 same transmitter location).

IL Harrisburg; WSIL-TV, ch. 3; granted license
 to cover CP for changes; 100 kw max, direc-
 tional (formerly 100 kw); 994' AAT/1000'
 AG/1600' ASL (same TL, 15' higher).

OK Tulsa; KOED-TV, ch. 11; granted license to
 cover CP for changes (see 12/84 VUD).
 Note: Same TL as is now used by KJRH, ch.
 2, which lists the correct latitude of
 36°01'15". KOED's 36°10'15" is incorrect.
 Also, KOED's transmitter antenna is 115'
 lower AAT and ASL than KJRH, but 60' higher
 above ground, according to its application.

TX Houston; KPRC-TV, ch. 2; granted license
 to cover CP for changes. See 2/84 VUD.

KY Beattyville; WLJC-TV, ch. 65; granted MP to
 raise ERP from 93.1 kw max to 1603.25 kw
 max; 656' AAT/525' AG/1624' ASL (23½' high-
 er AAT/200' higher AG/241' higher ASL.
 Another example of inconsistent figures.)
 Same TL.

MN Minneapolis; KM SP, ch. 9; granted license
 to cover CP for changes; see 8/85 VUD.

OH Lima; WLIO, ch. 35; granted CP to raise
 ERP from 503 kw to 661 kw max; 540' AAT/
 522' AG/1392' ASL (same AAT; 27' lower AG
 and ASL); same TL (had a CP about ½ years
 ago for major increase in ERP and antenna
 height, but apparently did not construct).

TN Nashville; WTVF, ch. 5; granted MP to
 change to directional antenna; same TL;
 1394' AAT/1140' AG/2010' ASL (27' higher
 AAT; 39' lower AG and ASL).

SC Charleston; WCBD-TV, ch. 2; granted MP to
 change to directional antenna (100 kw max);
 1949.7' AAT/1940' AG/1957' ASL (1108'
 higher ASL); TL to Awendaw Section, Seewee
 Road, 4 miles NE of Ten Mile, Charleston
 County; coordinates 32°56'24"/79°41'45"
 (Az. 50°, 15.28 miles from present TL).

CALL LETTER APPLICATIONS: NEW STATIONS
 CH C.L. STATE/CITY/APPLICANT
 65 WRBW FL Orlando; Rainbow Broadcasting
 45 KXLM-TV TX Rosenberg; Pueblo Broadcasting
 21 KRWB NM Roswell; Roswell Broadcasting
 69 WRBV VA Fredericksburg; Rappahannock
 Television Broadcasting Inc.

65 WLXV MD Cumberland; Gary D. Terrell
 25 KZRQ AR Pine Bluff; Charles Ray Shinn
 20 KZOD CO Denver; Alden Communications
 63 WFPB-TV FL Boca Raton; Palm Beach County
 Educators Broadcasting Inc.
 48 WHST SC Greenwood; WCGC-TV (four year
 old construction permit, just
 recently taken over by Pappas
 Broadcasting)

12 KIID-TV SD Huron; John R. Powley

CALL LETTER APPLICATIONS: CHANGE EXISTING
 66 WGBN-TV IL Joliet; WFBN
 3 WWMT MI Kalamazoo; WKZO-TV

CALL LETTER CHANGES: NEW STATIONS
 23 KREQ CA Arcata; The Mad River Broadcast-
 ing Company (can somebody con-
 firm this for me?)
 10 KBSC-TV MT Helena; KBSY-TV
 23 KMES IA Ames; Metro Program Network Inc.
 25 WLAX WI LaCrosse; WWQI
 58 WDJT-TV WI Milwaukee; TV58 Ltd Partnership
 26 WTRT AL Florence; WTUK
 51 WPXT ME Portland; WHSI

NEW STATIONS ON THE AIR
 CA Chico; KCPM, ch. 24½ signed on 9/24/85;
 5000 kw max ERP; 1772' AAT/718' AG/2586'
 ASL; TL 9½ mile northeast of Red Bluff;
 coordinates 40°15'46.8"/122°05'39.3"; ad-
 dress: Chico Broadcasting Corporation, 180
 E. 4th Street, Chico, CA, 95926.

FL Cape Coral; WFTX, ch. 36z, went on the air
 10/14/1985; 5000 kw max ERP; 987' AAT/988'
 AG/1017' ASL; coordinates 26°47'43"/81°48'
 04"; TL 4.9 miles SSW of Tucker's Corner;
 address: Family TV Associates, 428 Pine
 Island Road, Cape Coral, FL, 33904.

LA Shreveport; KMSS-TV, ch. 33z, signed on 10/
 6/1985; 4532 kw max ERP; 1813' AAT/1749'
 AG/2014' ASL; TL 0.57 mile south of KSLA-TV
 transmitter site; coordinates 32°40'00"/
 93°56'02"; independent station; address:
 Media South of Shreveport, Inc. P.O. Box
 30033, Shreveport, LA, 71130.

NY Kingston; WTZA-TV, ch. 62z,
 began broadcasting
 sometime around
 12/15/1985. I saw
 it testing with
 3/4 CBTP on 12/5.
 5000 kw max ERP;
 1940' AA T/277' AG/
 3197' ASL; TL atop
 Overlook Mountain,
 Woodstock; coordi-
 nates 42°05'06"/74°06'
 00"; independent station;
 address: WTZA-TV Associates,
 721 Broadway, Kingston, NY, 12401.

OH Akron; WBNX-TV, ch. 55-, seen testing by
 Rich Wertman on 12/1/85 and programming on
 12/2 with independent schedule. 2298 kw
 max ERP; 598' AAT/480' AG/1649' ASL.

TX Kerrville; KRRT, ch. 35+ seen by Jim Pizzi
 on 11/12/1985; probably signed on 11/6.
 5000 kw max ERP; 1763' AAT/1520' AG/3016'
 ASL; TL 2.3 mile ENE of intersection of
 Hwy 1283 and Hwy 37 in Lake Hills; coordi-
 nates 29°36'37"/98°53'35"; address: Repub-
 lic Communications Corporation, 6218 North-



west Loop 410, San Antonio, TX, 78238.
 SC Hardeeville; WTGS-TV, ch. 28-, signed on
 9/1/85 with independent programming.
 4920 kw max ERP; 795' AAT/785' AG/803' ASL;
 TL 1½ mile south of the intersection of
 Hwy 278 and Hwy 170; coordinates 32°19'50"
 80°56'19"; address: American Communica-
 tions & Television, Inc., 28 Broadcast
 Way, Ridgeland, SC, 29936. Programming is
 heavy on movies, mostly old syndicated
 programs, but a few of the current ones;
 no news programming.

MS Natchez; WNTZ, ch. 48z signed on 11/16/85;
 1079 kw max ERP; 818' AAT/693' AG/1023'
 ASL; TL on Liberty Road, about 4½ miles SE
 of Natchez; coordinates 31°31'35"/91°19'
 39"; address: MSIA Broadcasting Inc.,
 Television Plaza, Natchez, MS, 39120.

MD Baltimore; WKJM-TV, ch. 24+ is now broad-
 casting. Commercial broadcasting began
 Christmas Eve, 12/24/85, independent sta-
 tion with emphasis on religious programs
 and old syndicated programs and movies.
 1180 kw max ERP; 1073' AAT/900' AG/405'
 ASL; coordinates 39°17'15"/76°45'38"; TL
 WNUV-TV (ch. 54) transmitter tower. Rec-
 ent ownership change prior to going on
 the air; address to follow next month.

STATIONS EXPECTED TO BEGIN SOON
 DE Wilmington, WBOT, ch. 61, which had been
 scheduled to sign on last October, had
 some delays and planned to sign on in
 January, 1986. It will be an independent
 station, with plans to air local sports
 programs. Possibly an attempt to attract
 local cable companies already crowded
 with independent stations. Look for 3000
 kw ERP of signal beaming from sunny South
 Jersey, namely Woodstown.

AZ Phoenix; KUTP, ch. 45, was scheduled to
 go on the air in December, 1985. No word
 yet.

TX Midland; KPEJ-TV, ch. 36, hopes to be on
 the air in March, 1986.

NETWORK CHANGES
 CA Eureka; KIEM-TV (CBS,NBC) to be NBC, but
 sources also have KVIQ-TV (ABC,NBC) going
 to NBC. Something wrong in the sources,
 but don't let network changes in Eureka
 catch you off guard. And somebody there
 please tell me what the correct network
 changes are.

GA Savannah; WSAV-TV, ch. 3, is changing
 from ABC to NBC. Although no word yet,
 it seems likely that WJCL, ch. 22, will
 change to ABC.

MO Columbia; KOMU-TV, ch. 8, will change
 from ABC to NBC. That means that KCBJ-TV,
 ch. 17, will have to change to ABC or CBS.

TX Temple; KCEN-TV, ch. 6, is changing from
 ABC to NBC. That means a change for KXXV,
 ch. 25, which had been on the air for
 only a year.

CA Fresno; KFSN-TV, channel 30, changes from
 CBS to ABC; KJEO-TV, ch. 47, changes from
 ABC to CBS; effective 9/9/85.

ID Twin Falls; KMVT, ch. 11, covering all
 three networks, will be strictly CBS.

NC Raleigh and Dur ham: WRAL-TV, ch. 5,
 switched from ABC to CBS on 8/4/85, along

with WTVD, ch. 11 switching from CBS to ABC.
 WTVD is owned by Capital Cities, which now
 owns ABC.

VA IRFAX, VIRGINIA
 The FCC warned WNCV, ch. 56, against com-
 mercial advertising by a noncommercial tele-
 vision station. Two noncommercial FM radio
 stations were already fined \$5000 and \$2500.
 HARTFORD, CONNECTICUT
 WHCT-TV, channel 18, is back on the air
 after several months of silence. Now owned
 by Astroline Communications, the station now
 serves the community with badly-needed movies
 and syndicated programming. Maybe it was
 better off with Dr. Gene Scott.

LOS ANGELES, CALIFORNIA
 The Los Angeles Sheriff succeeded in getting
 the FCC to allocate channel 16 to public safe-
 ty uses, thus making the channel unavailable
 at Ventura, California, for television. Two
 applicants for channel 16 have been competing
 for seven years for the channel. The FCC is
 seeking alternatives. Channel 25 and 51 have
 been considered, but they would create short-
 spacing problems with other stations.

FORUM
 Ed Frye writes on the startup of WTZA, ch.
 62 in Kingston, NY, "WNYT-13's channel 63
 translator (W63AA, Kingston) has moved to
 channel 36. The lower frequency allocation
 seems to have resulted in better picture qual-
 ity, too. Meanwhile, Albany's latest UHF
 outlet, WUSV-45, continues to sputter along
 with no outstanding programming to speak of."
 On WTZA, he writes, "Having Nancy Cozear co-
 anchor their local newscast is a major score
 for WTZA management; she drew much attention
 in Albany when she began working for WNYT-13;
 several years ago."
 In an article sent by Ed from the Poughkeep-
 sie Journal, most of which had been reported
 in past months, comes a preview of their
 programming. Note the use of the word, "clas-
 sic." "After the inaugural today, Sunday
 programming will begin at 8 a.m. with a morn-
 ing schedule of religious programming and
 cartoons, a film...and a block of classic
 westerns in the early afternoon...." "For
 lovers of classic sitcoms, it will have a
 morning schedule featuring such favorites as
 I Love Lucy to such recent hits as Love Boat."
 "Saturday's programming will go heavy on films
 and sports and will also include music pro-
 grams."
 Richard Clark reported that WTRA, ch. 16 in
 Mayaguez, Puerto Rico, went on the air 12/14/
 1985, duplicating the programming of WRWR-TV,
 ch. 30 in San Juan. I neglected to include
 this station in the new stations list, but
 here is some data on it: 90 kw max/30 kw hor
 ERP; 1123' AAT/133' AG/1347' ASL. WUJA, ch. 58
 in Caguas, PR, signed on 12/4/1985 (55 kw max
 ERP; 1078' AAT); also on is WKPV, ch. 20 in
 Ponce, PR. There is also a channel 13 broad-
 casting 24 hours from Nevis, St. Kitts, and a
 channel 21 in Guatemala City, Guatemala. Under
 construction is ch. 5 in St. George, Gren-
 ada, ch. 13 in Tegucigalpa, Honduras, an
 unknown channel in San Salvador, El Salvador.

W58AA in Caguas, PR, is naturally off the air because of WUJA. WSJU, ch. 18 in San Juan, is now in stereo.

Randy Miltier sent an article from the San Jose Mercury News, dated 12/11/85. Ron Miller writes the television column, discussing James Gabbers, who operates KTZO, ch. 20 in San Francisco. Unlike most independent broadcasters who are complaining about the court decision against the "must-carry" rule, Gabbert is in favor of the decision. He feels that if you run a good station and people like it, no cable operator would drop you, even if the law now allows it. And weaker competitors would be dropped from cable systems long before KTZO would be. But writer Ron Miller adds his view of the decision. "Frankly, I think there's lots of room to argue on both sides, but I'd hate to see 'must carry' done away with completely. In the first place, local cable companies operate as monopolies and should expect to sacrifice certain freedoms in return for that franchise. Ensuring that their subscribers will receive all local stations conveniently via cable seems to me a small price to pay. If 'must carry' disappears forever, I don't think you'll see the Ch. 20s and Ch. 44s dropped by cable systems. But I wouldn't be surprised to see some systems dump marginal stations like San Francisco's KVOP (Ch. 38) which has been TV preacher Gene Scott's pulpit for years, or drop two or three of our four Bay Area PBS stations. Once your local cable operator begins to exercise that sort of discret ionary power, I think serious damage will be done to minority viewing interests, which raises its own set of constitutional questions."

Dave Nieman writes, "...WNYB-49 buffalo has purchased a movie package for 1987. Looks like they won't be on for a while." He also sent an article from the 12/22/85 Buffalo News about an applicant for vacant channel 56 in Syracuse, New York. Tureaud Broadcasting, which includes a Buffalo judge and a Common Council leader, applied for "a license" with the FCC. "They said the Buffalo group is one of five vying for the broadcast rights to the newly created Syracuse Channel 56, a full-power commercial channel opened by federal officials in late 1984." That means the FCC added 56 to the table of assignments. "Two other commercial UHF channels have been approved by the FCC for Syracuse but have not yet begun broadcasting." "Full-power licenses are awarded on the basis of competitive bidding, with applicants required to bid on the basis of their plans for broadcasting, their financial ability, and the backgrounds of the applicants."

News of the Wisconsin area from John Lentz. "On October 27th, WOBY was seen testing with Cletters and a telephone number. I called them up to find out that they're broadcasting from the former tower of WVTW (ch. 18), which is still atop the Marc Plaza Hotel in downtown Milwaukee. I live about 12 miles from downtown and receive a very poor picture.... At 12mid November 4, 1985 they started broadcasting... Odyssey, 24 hours a day in stereo." "WTMJ-TV, ch. 4, NBC, and WMSV-TV, ch. 10, PBS are the

only TV stations in Milwaukee, so far, broadcasting in stereo." WGVV-24, Milwaukee, is carrying commercials for WISN-12's news programs in exchange for the rights to broadcast "Happy Days" reruns. WVCY-30 has expanded its programming and added CNN news. It now operates from 3 p.m. to 11 p.m. weekdays, and 8 a.m. to noon, and 4-11 p.m. on weekends. Meanwhile WVTW-18 is 24 hours, the fourth Milwaukee station to do so.

A few answers to my question about cities with more than one PBS outlet. Robert Baker reports that Omaha, NE (KYNE, ch. 26) and Council Bluffs, IA (KBIN, ch. 32) are separated only by the Missouri River, and both stations carry a great deal of PBS programming. In a similar sense, I guess we could also include Wilmington, DE WHYY-TV, ch. 12, which has offices and transmitter in Philadelphia, and Camden, NJ's WNJS, ch. 23. Both of them are also heavy on PBS. Don Ramos gives more info on the Los Angeles area. KGET-28 is the primary outlet for PBS, and also produces its own programs for distribution around the country. KLCG-58 is owned by the Los Angeles City School District and sends programming primarily to schools. Many shows are done by students. Some PBS shows are shown, but with visible captioning for the deaf at the bottom of the screen. There is a third PBS station in the viewing area. KOCG-TV broadcasts from Huntington Beach, carries some PBS, but programs for Orange County viewers.

Randy Miltier sent an article from the 1/9 San Jose Mercury News, recalling the efforts of second-rate Spanish broadcasters to put down their greatest competitor, the Spanish International Network. "Although it may be years before it actually happens, the Bay Area's only Spanish-language television station could lose its operating license as a result of a federal judge's decision...that it is controlled by foreigners. Federal Administrative Law Judge John H. Conlin, sitting in Washington, D.C., refused to renew the license of San Francisco's KDTV-TV, Channel 14, and six other big city Spanish-language stations around the country, saying the foreign influence over them violated federal law. However, he said that their owners did not violate the chief intent of the law, which is to keep broadcasting out of foreign hands in the event of war, and that corporate restructuring might solve the problem. In any event, the 5-year-old case probably will be appealed and could drag on several more years before any definitive action is taken by the (FCC).

Larry Fuss says that there is a Hendersonville, TN, and there is a channel 50 assignment there. According to the coordinates, it is located just northeast of Nashville.

"Having lived in Pittsburgh at one time, I can tell you that Mount Washington (where the LPTV ch. 63 will be) is IN Pittsburgh, not "near Pittsburgh". It sits on the south bank of the Monongahela River, right across the river from downtown Pittsburgh." He also corrects me on the statement about noncommercial stations on other stations' towers. "There is no such law that obligates commerc-

ial TV broadcasters to provide tower space to educational stations. There is an FCC rule however that prohibits a licensee who owns or controls a 'unique' site from prohibiting access to the site to other stations. I guess 'unique' could mean the top of the tallest building in town, mountaintop real estate, or whatever." A news clipping from the Atlanta Constitution reports that WGTX, ch. 46 in Atlanta displaced WTBS, ch. 17, the famous "superstation", as the city's leading independent station. In another clipping and advertisement sent by Larry, KVEA-TV, ch. 52, is now broadcasting 98 hours weekly in Spanish, including US films and syndicated programs dubbed in Spanish, and locally-produced news and childrens programs in Spanish. The article and the advertisement identify KVEA as a Los Angeles station, but isn't it still licensed to Corona?

Fred McCormack reports that KVRR-15 finally got its two new satellites linked together. (referring to KNRR-12 in Pembina and KBRR-10 in Thief River Falls. He also sent a clipping from the Multi-Channel News, 12/16/85, about Canadian cable companies carrying KGPE, ch. 2 in Grand Forks, ND. "Noting some 14,000 Winnipeg residents make regular contributions to Prairie Public Television—a PBS licensee based in Fargo, ND—city council here has appealed to the (CR)CTC to ensure PPTV's... station will not be cut from cable offerings. The city's move was in response to an application to the CRCTC by Greater Winnipeg Cablevision to replace four U.S. TV signals from North Dakota with similar signals from Detroit.

Lots of information and questions from John Adams. To start, get out those LPTV-XLTR lists. CONNECTICUT: W61AC is Waterbury, not Westbury. FLORIDA: W56AW Fort Walton Beach should be relaying WTVY, ch. 4, not WTVJ, which is too far. WTVY is in Dothan. In my notebook, I had changed WTVY to WTVJ for some reason, but I can't figure it out, so assume it's WTVY. MASSACHUSETTS: W70AI should be W07AI. That agrees with Television Factbook and the 1980 FCC Data base. NEW YORK: W04BK is too far from Elmira to relay WENY. He suggests that the primary may be elsewhere. Either that or it picks up a microwave feed. OREGON: K13MF is too far away from Medford to relay K0BI. When I checked this one out, I found a major mistake on that page. The following should be the correct list of stations repeated:

K13KO K0BI	5	According to an article in TV Guide some
K13KQ KCBY-TV	11	years ago, LPTV station
K13ME KCB1-TV	2	station I19AD was re-
K13MF KTVB	7	broadcasting K31AE,
K13MI K0BI	5 (LIC)	but one reference has
K13MI K1IM-TV	3 (CP)	them as both repeating

OR. W59AS is listed as ch. 58 in the Eugene paper. K61CC is listed in other references as W61AL or K61CL. The Seaside-Warrenton-Gerhart xlters (K71AP, K75AJ, K78AQ, K81AQ) all shut down 3 1/2 years ago. Tillamook xlters (K71AL, K73CC, K76AM, K79AE, K82AT) are all believed off the air. Does anybody have information on primary station changes as a

result of network changes in the Cottage Grove or Florence xlters? Is K37AA the correct channel? No way it could be. I suspect it should be 38, since Rural Baker Valley also has xlters on 40, 42, 44, 46, and 50. John says that Oregon Public Broadcasting gives contradictory information when identifying its translators. He mentions a ch. 68 xltr in Drain-Curtin, OR, that was not listed in the LPTV-XLTR list, but is no longer listed in local program schedules in the area. K02KO shut down in summer, 1983. K18AD (?) and K68AE aren't listed anywhere in local papers. K55AN is now off. K55CT is not listed anywhere. ch. 61 in Gold Beach should be deleted; that area is served by K55CM (But ch. 61 was a CP. Does K55CM plan to change channels?). K62AS is not listed anywhere. K62BF burned down in 1984, came back on for a few weeks in 1985, and went off again, although it is still listed; Dufur, however, is 120 miles away. K64AO is no longer listed on the primary's ID slide. K68BH was listed on the program guide as ch. 11, but is not listed at all anymore, but the ID slide still lists it. Same with K59BN. WASHINGTON: John wonders if KOJEI is still on the air; he hasn't seen it in the past few months. K14AA most likely inputs K58BL. K27AC no doubt is off because of KCMT-27. John reports K61CL seen last August with religious (PTL) programming; I noticed some confusion myself. Even though K61CL was listed as a licensed translator, there was a K61CD granted to repeat WJAN-17 in Vancouver. John suggests that the primary of K65BU would more likely be KCK A-15 rather than KTPS-23 (formerl y ch. 62). KTPS-KCKA no longer list K67CI as a translator. K70DT is apparently no longer on. NEVADA: The 9/1/84 mentioned a LPTV in Tonopah, NV, run by juvenile offenders. I have no record of this, but it could be there.

A few questions John asks: What are the FCC rules concerning ID's for TV translators? Translators can ID by frequency offset keying, by audio subcarrier I believe, or by being included in multiple ID's by the primary station. I saw one translator sneak it in its hourly one-minute pledge drive. How did the "must-carry" rule apply to translators and foreign stations. As far as I know, it didn't. Cable systems were required to carry full service stations within a certain radius, which was well within its coverage area. The rule was intended to protect U.S. broadcast stations, not foreign. Can and do any LPTV's affiliate with the three major networks? I don't know of any that do yet, but I'm sure they can, if the networks want them. ABC won't bother with a broadcast station unless it has a certain number of potential viewers. When will the Canada-Alaska xltr list be out? I made a complete list of Canadian repeaters some months ago, then began to find major discrepancies from different sources as to their originating stations, so I question the value of that list. I haven't touched the Alaska list yet. Presently, I've been trying to completely update my broadcast station list in the event that the WTPDA can

begin plans for a TV station guide, which would be a high priority. On the translator update in the 3/85 VUD: K27AM is Bend, OR, not OK. K50AS can't be in Denver because its primary station is in Denver. (Maybe, but not necessarily the case. New York stations used to have translators in the same city. I think people within New York City had trouble with the VHF signals being reflected off buildings. It could be that the city of Denver had some trouble like that.) It's input station, K05GI Buford, is about 100 miles from Denver. (Note: I did find a reference to its transmitter: 1 mile SE of Meeker on Pollard Hill, north of the mouth of Marvine Cree k, about 1/2 mile up.)

A mistake in the 9/85 VUD caught by John: Nate Ely described the Iron Mountain translators, "all...200' AG except for ch. 55 and 57, which are 200' AG." Since I no longer have Nate Ely's letter, I'm not sure what I said. I think 55 and 57 were 150' AG. On the 10/85 VUD, page 10 on the article sent in by Walter Patton, he suggests that "CTV and CBS" should be "CTV and CBC", and that "But the FCC..." should be "But the CRFC..." That seems to make more sense that way.

Other news from John Adams: KOIN, ch. 6 in Portland, OR, has been airing a Japanese program in the evenings, filmed in Oregon. KOIN also advertises that its signal can be picked up on FM radios. KECH, ch. 22 in Salem, OR, dropped STV last year, and is airing mostly religious programs, and some NBC programs dropped by KGW-8 during the day. No news yet on KTDZ-24 Portland, KUTP-32 Salem, or ch. 40 in Portland. Ch. 40 has yet to be granted call letters, so I suspect there's conflicts over the FCC's grant of a construction permit. KTBW-20 Tacoma is not yet listed in the local TV Guide, despite being on the air nearly two years.

John asks what network KCMT-27 Wenatchee is. Definitely independent, with movies and news during prime time. KVOS-12 Bellingham is a CBS affiliate, but carries very little CBS programming: mainly daytime and late night programs. What network is KCWS-3 in Glenwood Springs, CO? Definitely independent. When did WRGB-6 Schenectady NY change to CBS, and WAST/WNYT change from CBS to NBC? Some time after 1980, I believe, and before 8/83, where an old SRDS records the change. WAST changed to WNYT around late 1981. When did WXAA-TV, ch. 23 in Albany, NY, come on the air? 7/30/1982. Whatever happened to an application for ch. 50 in Albany NY listed in the 9/83 VUD. Probably returned to the applicant. Evidently it was for Albany GA, not Albany, NY, but regardless, there is no ch. 50 assignment for either city. What is the latest on WOOD-55 Amsterdam? You know more than I do. I don't even have call letters for them yet. About WVUV-51 Pittsfield MA? After a two year fight to keep its construction permit, the FCC issued a final decision to grant it in spring, 1985. So give it about two years to construct. Is WVUV-33 Utica NY on yet, and is it a CBS affiliate? Not yet, but I think it may be a good candidate for CBS. What are the cor-

rect calls for ch. 46 in Binghamton, NY? A TV log lists it as WERZ, which is an FM station in New Hampshire. The calls for 46 are still WSKG.

Observations of Hawaiian stations made by John last spring: KHON-2 Honolulu airs most NBC programs on a same-day delay basis; ID's include its Kauai xlrtr, K78AR. KITV-4 airs most ABC programs with a one-week delay, operates all night thurs-fri-sat. KGMB-9 airs most CBS programs, on a delayed basis, is on all night on weekends, but its satellites KGMV-3 Wailuku and KGMJ-9 Hilo do not. KGMB occasionally identifies its translators K57BI Waimea and K69BZ Lihue, but no mention of K03EB Princeville-Hanalei or K68AY Wai'anae Coast. Network affiliates in Hawaii don't necessarily air programs on the same day as mainland network stations. KDSC-14 airs mostly music videos and some Korean programs in the evening. KHAI-20 is all Japanese, and is on only in the evenings. KSHO-26 airs some network programs rejected by the network stations. Kauai translator K74BC is now on ch. 52. Translators that were not on were K50AF, K03EB Princeville-Hanalei, K10MH Hanalei, and K29AF Lihue.

John says that the correct calls for ch. 14 in Minot ND should be KMCY, not KOMY. There is a channel 29 in Sacramento CA that recently got call letters KOMY. I know that discrepancy had been bothering me for some time.

John wants to know where he can get a list of the various editions of TV Guide as well as a list of stations and cable services that are included in those editions. Can anybody help out on that?

He also reports WPTX, ch. 36, on the air with typical weekday schedule: childrens and religious programs, midday news, syndicated public affairs, evening syndicated reruns and movies and late night movies. Typical independent station.

I still have several letters from Bruce Elving, Paul Gaines, W.R. McIntosh, and Canadian news from Walter Patton, which I'll save for next month. Locally, some papers have been announcing that WOCG, ch. 8 in Hamonton New Jersey is supposed to start up in January 1986. Since there is no channel 8 assignment in Hamonton, or anywhere else in New Jersey, I assume they're talking about a LPV station. If so, what's it doing with broadcast station call letters? Maybe next month I can tell you a little more about this station.

One quick note from Bill Johnson: ch. 66 in Joliet, IL, is now WGBQ-TV as of the beginning of the year. The station is advertising 5 million watts of power. I thought they always had 5 million watts. Is anybody in that area picking up a better signal, or is it about the same?

D O N ' T M I S S T H E
1 9 8 6 W T F D A
C O N V E N T I O N ! ! !

Jamestown NY - August 1 - 3

FM NEWS

New FM Stations, Translators Granted

AL Tuscaloosa W255AH *100.9 (WGI 8 91.9 Birmingham FM translator)
CA Banning K201AR *88.1 (KSGN 89.7 Madera)
CA Big Pine K288DL 105.5 (KMMT 106.3 Mammoth Lakes CA translator) (Los Angeles)
CA Boreno Springs K232CC 94.3 (KKG6 106.1)
CA Palm Springs K208AK *89.7 (KSGN 89.7)
CA Ukiah K285AC 104.9 (KEAR 106.9 San Francisco). "Very much alive... its alleged replacement on 102.3 to carry KABL-FM 98.1 San Francisco. The confusion resulted from an FCC error: they granted the KABL translator on 104.9, despite K285AC's existence, and then granted the new translator the frequency change to correct the blunder." (side CA)
CA Victorville K205BH *88.9 (KSGN 89.7 River/CO Crested Butte *90.3 255 h.v.; 450' Educ. Rad. C1 Shelton *90.1 100 h.v.; 340', Schools CA Athens *91.3 3000 h.v.; 330'; GA Public Tele. GA Tifton *91.1 3000 h.v.; 250' "
IL Canton W80D 100.9 3000 h.v.; 330'. Did not delete apparently, as one VUD reader pointed out it recently got a facilities' change
IL Petersburg 97.7 3000 h.v.; 330'
KS Wichita *88.3 15500 h.v.; 145' Ed. Bcstr. Fou. KY Okolona (Louisville rim-shooter) *88.5 24000 h.v.; 570', g, Evangl Sounls
MI Gladstone 105.5 3000 h.v.; 330'
NV Blythe K228CL 93.5 (KPAH 92.7 Tonopah)
OR Cave Junction K265HC 100.9 (KEKA-FM 101.5 Eureka CA) (97.5 Bend OR)
OR The Dalles K240BN 95.9 (KNL R / 1300' SC Clearwater near Augusta GA) 98.3 3000 h.v.; WA Seattle, Aki Beach K258AA 99.7 (KISW 99.9 Seattle) (Nathan Educational Bcstr. Found. WA Yakima *81.1 700 h.v.; 690', g, /
WI Wausau-Rothschild W208AC *88.5 (WXPB 91.7 Rhineland WI)
VI Charlotte Amalie 107.1 1350 h.v.; 1630'
BC Seattle 104.1 5 watts; fm (CISU 104.9 Squamish relay). "Your Dec. column listed CIGS 107.1 as Seattle. It should be listed as Gibsons-Sehmet."

NS Inverness (60 km W. Sydney) 94.3 490 w; CBC ON Red Lake CKRE 98.5 170 h; 92'
YT Carmacks 90.5 1 w, CKRW AM relay & local, 170 km NW Whitehorse. (powerful FM station)
YT Old Crow 100.1 50 w, CBC, Yukon's most/
YT Pelly Crossing 90.5 1 w, CKHw and native

FACILITIES CHANGES GRANTED

AL Albertville W05B 106.1 1000' (100000 h.v.)
AK Anchorage K1LV 104.1 55000 h.v. (71)
AZ Kingman KAWA 105.9 12500 h.v.; 3680'
AR Newkirk KALL *90.9 4000 h.v.; 455'
AR Pine Bluff KLLN 94.9 100000 h.v.; 1870', transmitter Redford AR. (reduces coverage.
CA Blythe KJMB-FM 100.3 36000 h.v.; 57' /
CA Laurel K216 *91.1 (from K228AH 93.5), on the air on 91.1, but exact call numbers unknown.
CA Mariposa K228C 105.5 now has KDNO 98.5 Delano, not KEBR Sacramento on it
CA Pasadena KROQ-FM 106.7 5200 h.v.; 1390', reduces coverage somewhat
CA Project City K244AY *96.7 has KEAR 106.9 San Francisco, not KEBR 100.5 Sacramento on it
CA Salinas K252CK *88.3 (from K249AR 97.5)
CA Santa Maria K285CX *104.9 " K288CF 106.7)
CT Stamford WJRS 96.7 adds v, 330' (3000)
FL Pensacola WYLO 100.7 1555' (100000 h.v.)
GA Mc Donough WMVV *90.7 on air with mono g at 13 watts (temporary power, as zoning board tucked down request for 300' tower), " it's very weak and has lots of static. I heard them ID as 'WVVV FM 90.7 McDonough!... I may have been

the first human being to ever tune in. Even people in McDonough (my mother lives there) are not even aware of it."

HI Lihue KJAD 92.7 100 h.v.; 1220'; FCC says application for 96.9 cancelled; assume station has not deleted, and is going back to former facilities.
ID Emmett KKIC-FM 101.7 1250 h.v. (5101)
IL Morris WCSJ-FM 104.7 40000 h.v.; 185'
IN Bedford WBF 106.5 2000 h.v.; 400'
IN Muncie WOKZ 104.9 330' (3000 h.v.) (hv(310))
IA Marshalltown KFJB-FM 101.1 adds v; 75000/
KS Ogdan KOLA 103.9 315' (3000 h.v.)
KY Ashland WAMX 93.7 740' (100000 h.v.)
KY Hazard WSGS 101.1 1480' (100000 h.v.); \$7
LA Galliano KBAU 94.3, not Golden Meadow, apparently staying in Galliano
MD Cumberland WROG 102.9 1440' (3500 h.v.)
MA Brookline WBOB 92.9 17000 h.v.; (8601)
MA Fitzburg WOLO 104.5 25500 h.v.; 680'
MN St. Louis Park KJJO 104.1 100000 h.v.; 1070'
MS Pat. Mount WMFM 106.3 1800 h.v.; 400'
MO St. Louis KSD 93.7 985' (100000 h.v.)
MT Billings KZLS 97.1 adds v, 85000 h.v.; 385'
NE Lincoln KJUS 95.3 90' (3000 h.v.)
NV Austin K276CS *103.1 (from K249BT 97.7)
NM Albuquerque KHFM 96.3 20000 h.v.; (4130)
NM Gallup KOVO 94.5 100000 h.v.; 1380'
NM Socorro KHBN 92.7 3000 h.v.; -235'
NY Albany WPKX 106.5 15500 h.v. (900')
NY Beth WVIN-FM 98.3 2750 h.v.; 340'
NY Ellenville WELV-FM 99.3 100 h.v. (1630')
NY Patsburgh WGF8 99.9 100000 h.v.; 985'
NC New Bern WSFL-FM 106.5 100000 h.v.; 915'
NC Rocky Mount WVSP *90.9 (from Warrenton)
NC Tarboro WKTC 104.3 985' (100000 h.v.)
ND Oakes KDDR-FM 92.3 4000 h.v.; 150', C27
OH Springfield WAZU 102.9 490' (50000 h.v.)
OR Phoenix KHUG-FM 106.1 33000 h.v.; 3275'
OR Tillamook KTLI-FM 104.1 16500 h.v.; 185', a dramatic reduction in coverage from former 98060 h.v.; 2000'

PA Bellefonte 96.3 660 h.v.; 580'
PA Greenville WTGP *88.1 1100 horizontal, 7'
SC Barnwell WBAW-FM 101.7 330' (3000 h.v.)
SC Mount Pleasant WDXZ 104.5 (from 104.9)
SC North Myrtle Beach WNNB 105.5 330' (3000w)
TN Sweetwater WDEH-FM 98.3 (from 95.3) - apparently on air and DX ready on 98.3
TX Bryan KORA 98.3 800 h.v.; 530'
TX El Paso KXCR *89.5 175 h.v.; 1090'
TX Hutto (from Taylor) KRGT 92.1 1650 h.v.; 450'; non-ID assumed dropped, still Spanish?
TX Lake Jackson KQAL 107.5 100000 h.v.; 1955'
TX Lubbock KLLL 96.3 820' (100000 h.v.)
KRLB-FM 99.5 820' (100000 h.v.)
KFYO-FM 102.5 820' (100000 h.v.)
TX San Angelo KIXY 94.7 360' (100000 h.v.)
VT Lyndonville WWL R *91.5 (from 98.3); assumed. FCC says its grant for 98.3 has been forfeited, but station could be deleted - at, what fun it is to second-guess the FCC!

WA College Place KGTS *91.3 4600 h.v.; 1295'
WV Mullens WPMW 92.7 330' (3000 h.v.)
WI Berlin WISS-FM 102.3 3000 h.v.; 176'
WI Milwaukee WVCY 107.7 24000 h.v.; 540', reduces coverage
PR Bayamon WGSX 94.7 32000 h.v.; 1780'
PR Rio Piedras WFID 95.7 50000 h.v.; 940'
BC Kelowna C8TK 88.9 (from 95.7)
CILK 101.5 11000 watts
NB Campbellton CBAE 90.5 (from 88.1)
ON Toronto CKLN *88.1 250 h.v.; new, unannounced
PQ Verdun CKOI 96.9 has vertical (and h)
YT Whitehorse new 93.5 (not 92.5)

AL Arab WCQR 92.7 fm, "The New Lite 92.7 WCQR," not a nonIDer. "They now sign off at night, so that's a welcome change."
AZ Phoenix KFLR-FM *90.3 (local)
AR Mountain Home KKTZ 107.5 mr, \$, no SCA
CA Bakersfield KJWI 92.1 to be c; "sister station to KDCE 102.1 San Francisco. Apparently, they'll ship KDCE's tapes back and forth. The owner was surprised when I mentioned that KQXR 101.5 was classical back in the '50s; guess he was planning to bill KIWI's format as a first."
FL Coral Gables WHQT 106.1 s, no rock.
FL Gainesville WYFB *90.6 G network (Moody)
FL Jupiter WIKI-FM 96.7 (rock)
FL Lakeland WCIE *91.1 S network (Network)
GA Baskley WBBK-FM 93.5 k, has "Satellite Neww"
GA Decatur WFAV 98.3 Mutual news, "FM-98"
GA Douglas WDMG-FM 99.5 R (United Stations network news); still monophonic
IL Champaign WSTF *90.1 rock and jazz
IL Litchfield WSMI-FM 106.1 kr-- "has been for 3 years at least." Yes, this column strives to bring you always the latest news!
IL Rantoul WRBZ 96.3 r (not fm, no more satellite); now "82-95," not BZFM.
IL Sullivan WSAK 101.3 k, not k and r
IL Urbana WKIO 106.9r, not rp, is half-way up on its new tower. New facilities: 2350 h.v.; 330'. New tower "right next to their little tower. It really looks dwarfed by the new one."
MN Duluth WAKX 98.9 no network (carries only special events and news from the ABC Direction Network, but no network newscasts)
MN Eveleth WVEVE-FM 97.9 E network; IDs on hour as: "Eveleth-Virginia-Hibbing-Cook-Or-Embarras-Buhl Mountain Iron," and possibly rotating among other cities.

MS Clarkdale WAD 106.3 m, stereo
MS Oxford WKLL 107.1 r, still s, -J-107 (strict)
OH East Liverpool WOLA 104.3 no network
PA Altoona WFBG-FM 98.1 no network
PA Blairville WNOQ 106.3 S net, "Wink-FM"
PA Braddock WHYW 96.9 no network
PA DuBois WOWO 102.1 kr (k days; r nites)
PA Greensburg WOKU 107.1 no network
PA Johnstown WGLU 92.1 no network
WJNL-FM 96.5 no network
PA New Kensington WRCT 100.7 no network
PA Pittsburgh WRCU *88.3 no network
WWSW 94.5 no network
WHTX 96.1 no network
WPIT-FM 101.5 G (Moody) network
WYDD 104.7 no network
PA Sharon WPKF 102.9 no network
PA Uniontown WYFM 99.3 network, still Q-99
TN Bolivar WKGZ-FM 96.7, \$, (from k)
TN Chattanooga WSKZ 106.5 r
TN Knoxville WIMZ-FM 100.5 r (the change of WRJX 103.1 Jackson to rp makes only two other rp TN stations: WKDF 103.3 Nashville and WZXY 104.9 Kingsport) (network)
TX El Paso KBNA 97.5 Spanish, r, assumed no Y / TX Midland KBAT 93.3 rp
TX Tarkenton KATL-FM 98.1 r, "98-Rocks"; \$7
WV Fairmont WF3M 97.9 no network, "Great 98"
WV Wheeling WKWK-FM 97.3 no network
WVOK 98.7 no network
WV Cayman WJMM 107.5 no network, "FI: 107-5"
AT Calgary C2J1 denied change to harder #
MB Winnipeg CTTI 92.1

STEREO

AL Dothan WRWA *88.7 C, stereo assumed; simulcast with WTSU *89.9 Troy-Montgomery AL, which is also c; P network for both.
AK Anchorage KATB *89.3-first g station for

FCC/FM

are since KHVN gave up g in 1981
KASH-FM calls changed from KASH), k;
minus 290' (100000 h.v)
CA Kernville KKR 123.5 r (adult contemp.)
CA Los Angeles KKL 98.9 (never had \$ as
KHOF), drops SCA
CA Redding KNCQ 97.3 k, transmitter on Shasta
Bolly at 5000' sd, along with two TVS
FL Miramar WCJX 96.5, has no SCA
GA Columbus WTJB 91.7 r, stereo, P, assumed
GA Ocala WKAA 97.7 r, "K-98, or Digital 97.7"
LA Duluth KPCH 97.7, with Ruston sometimes
LA Milesville WIXQ "91.7
WI Tomah WVX 98.9; technical problems in one
of our lines"; will be stereo soon, they tell me.

NOTIN STEREO--DELETE LISTING
FL Starke WTLG "88.3, signs on 6 a. m.; off 6 p.m.

MULTI-CITY IDs IN USE
AR Jacksonville KEZQ100.3 adds North Little Rock
LA Alexandria KTIZ 96.9 adds Pineville
LA Ruston KYKZ 107.5 with Monroe sometimes;
transmitter and studios are in Ruston.
MI St. Joseph WRX 107.1 with Benton Harbor-
Niles-South Haven "every hour"; Magic-107 yet
NC Eden WWVI
94.5 adds Greensboro
[and Scranton
PA Nanticoke WJMW
92.1 adds Wilkes-Barre/
Barre and Scranton
TN Trenton WLDT
97.7 adds Dyersburg,
k, \$, no SCA
[Boomer City LA
TX Carthage KTUX
98.9 adds Shreveport /



SEE JANUARY VUD
GREENSBORO,
NORTH CAROLINA
FL Gainesville WYGC 100.9, p. 22, Bugaj
MO Ferguson KCFV, p. 19, Bueneman
NY Monticello WSUL 98.3, p. 24, Hood
NY Southold WBAZ 101.7, p. 24, Hood [Bugaj
VA Staunton? (it must be ad.) WAWV 99.7, p. 23/

MORE FORMATS/NETWORKS
From Rod O'Connor, stationed in Alaska
Anchorage KGOT 101.3 no network
KRKN 102.1 rp
Homer KGTL-FM (and translator) 103.5 r
Kodiak KMMT 104.1 k (also r, n, m, k) [affairs
St. Paul KUHB "91.9 k (also r and lots of public/
Off air: K272BW 102.3 Kodiak; when it does come
on it may carry something other than presently-
authorized KGTL (AM).

SLOGANS/NON-IDS IN USE
AR Hope KXAR-FM 101.7 KX-101; ID said to
include Texarkana, but I find it too far geographi-
cally from Texarkana for this to be other than
sheer fantasy!
FL Clearwater WNLT 95.7 W-light
IL Aurora WAUR 107.9 Chicago's Lifestyle FM
IL Lansing WLN 96.3 Soft Touch, [oull
IA Pella KXJX 96.3 X-103 (strict); non xmt r
MI SW Des Moines; no PA local news or
sports, going for Des Moines audience. Des Moines
paper interviewed several Pala citizens, most of
whom seemed to care less that their local station
was not carrying anything local. Perhaps KTAV
92.1 could partly throw off its religious cloak and
do more local main-stream programming to fill
the void.

ME Biddeford WBYC 94.3 Joy-94
NH Rochester WXKZ 96.7 Ecstasy-96.7
OH Youngstown WKBN-FM 98.9 Stereo-99
PA Emporium WQKY 99.3 99-Q
PA Meadville WZPR 100.3 Country-100
WV Morgantown WVAQ 101.9 Q-102

A STRANGE GRANT BY THE FCC
TX Ballinger KRUN-FM 103.1 gets specified hours,
6 a. m. to 7 p. m. Otherwise, FM stations are
expected, by FCC rules, to program at least four

hours after 6 p. m. local time, making the earliest
possible sign off 10 p. m. This could be the start
of a trend among FM stations that are marginally
profitable, or not profitable at all in the evenings,
to cut back on their service. An alternative to 24-
hours-per-day among stations--and what does this
indicate, if it becomes a trend, to DXers?

FM APPLICATIONS: FCC has dismissed
all outstanding applications for the following
towns and frequencies: GA Boston 106.3, MN
Duluth 101.7, MN Ely 92.1, MS Bruce 94.6, OK
EK City 94.3, among others. Already some of
them, such as Duluth MN, have fetched new
applications, with supposedly the first one in now
getting the grant. But it looks like many are filing
as the applications of more than one party reach
the FCC simultaneously.

DELETIONS
ID Praston KACH-FM 96.7
ME Springvale WNCY "91.1
MI Lakeview WLKV 106.3
MA Gloucester 104.9 Grandbanke Corp., with
Simon geller getting to keep his WCA 104.9
Gloucester.
NJ Lawrence Township WLCR "89.7
ND Carrington KDAK-FM 98.3
SD Balde Fouchre KCEB 95.9
WY Thermopolia KLYX 98.3
BC North Bend CBRN 90.7 (same station as
CBRW 90.7 Boston Bar, with a call letters' change)

CALL LETTERS CHANGES
AR Stuttgart 106.5 KFNC
CA Chester 98.9 KCFM [Best
CA Los Angeles 97.1 KBZT (from KHTZ); "K/
CA Madera 92.1 KHOT-FM (KXMK)
CA Oceanside 102.1 KEZL (KEZL"-FM")
CA Sacramento 106.1 KRAK-FM (KSKK)
CA Taft 103.9 KTLM CO Aspen "91.5 KAJX
FL Crystal River 98.5 WKTK (WRYO); affects 1
FL Vero Beach 101.7 WXCL
GA Thomsville 107.1 WHMJ (WTUF)
GA Waycross "91.5 WXVS (WXGA-FM)
97.7 WASE (from WWU1)

GA La Grange 104.1 WEKS-FM (WJYF-FM); s, no
network; AM is in Marietta GA, along with studios!
ID Boise 97.9 KOFC (KBOJ-FM)
ID Nampa 94.9 KFML (KFXX-FM)
ID Sun Valley 93.5 KSKI-FM" (KSKI-FM)
IL Joliet 93.5 WJTW (WJAP); m, no nonID
IN Hartford City 93.5 WWWD (WWHC)
IA Decora 100.9 KDEC-FM [translator
IA Spencer 104.9 KJG (KRGs); affects one /
KS Marshfield 92.7 WKQI (WCAJ)
KY Catlettsburg 92.7 WKQI (WCAJ)
MA Marshfield 96.9 WATD-FM (WATD)
MI Bear Lake 100.1 WRDT
MS Brookhaven 92.1 WBKN (WMRO)
MS Gulfport 96.7 WQFX-FM (WQFX); nonID
assumed dropped
MS New Albany 106.3 WTMX (WJMJ)
MO Joplin "88.7 KXMS
NE Orchard 105.3 KGRD NV Fallon "91.9 KVCE
NV Las Vegas 96.3 KKLZ (KITI); has vertical
NV Round Mountain 97.7 "K249CI (K249BF)
NM Beten 97.7 KARS-FM (KMLW)
NY Poughkeepsie 92.1 WLMS
NC Dunn 103.1 WDKC (WIDO)
NC New Bern 106.5 WSFL"-FM" (WSFL-FM); AM
has new calls now ND Williston "89.5 KPPR
OK Clinton 106.9 KKCC (KKCC-FM); nonID
assumed dropped OK Marlow 92.1 KFxi
OK Oklahoma City 107.7 KIMY (KAEZ)
OR Bend "91.3 KOAB-FM
PA Lock Haven 92.1 WWZU (WCNM); non \$, r,
no network, "Zoo-92," IDs with Williamsport-
State College.
SC Ravenel 101.7 WFXR (WGOX); 13:00 h.v.; 480'
TN Jackson 103.1 WRJX (WJHR), rp, no SCA
TX (had paging) WINJ (WMGL)
TN Monterey 107.1 WMCC TN Pulaski 98.3/

February, 1986

TX Corpus Christi 93.9 KSTE (KEXX) (KTYE)
TX Dal Rio 96.3 KTDOR TX Tye 98.3 KTLC /
Non will WELY and KELY change their calls?
TX Weatherford "89.5 KADE [WTBC
UT Midvale 102.7 KOMB VT Williston "90.9/
VA Petersburg "91.3 WAZR [KEYF (KEYJ)
VA Woodstock 95.9 WSWT WA Cheney 101.1/
WV Beckley 103.7 WCIR-FM (WCIR"-FM")
WJ Clintonville 92.1 WMMQ (WFCL-FM)
WI Wiroque 102.3 WRQJ-FM (WGBM) [CFKS
ON Beerskin Lake 90.1 CFBL ON Deer Lake 90.1/
ON Kingfisher Lake 90.1 CFKL
ON Longlac 90.1 CJLL
ON Wunnumin Lake 90.1 CHPM (from CJPM)
SCA, 67 kHz and 92 kHz (67 kHz un-
less specified otherwise)

AR Jonesboro KJBR 101.9 paging, 92 kHz
KFJN 107.9 music 92 kHz, data 67 kHz
CA Riverside KSGN "89.7 music (rock, m vocals,
replaces data; unusual format for a Seventh-day
Advertiser-owned station, with the denomination
officially eschewing rock [and jazz] music.)
FL Fort Lauderdale WMYI 100.7 no SCA
WJQY 106.7 TX high speed, freq. shift)
KY Murray WKMS "91.3 silent carrier 67 kHz (re-
move listing); 92 kHz used sometimes to carry
WJSP 113.0 AM Murray KY with its k format and
Kentucky Network news [mation Systems
MA Boston WERS "89.9, TX 92 kHz, MIT Infor-
/WBUR "90.9 TX 92 kHz Mutual Multicomm
WJIB 96.9 TX 67 kHz, Lotus Infor. Systems
WZLX 100.7 TX (Bonnevile, same as on
101.7)
WFNX
WHTT 103.3 167 kHz paging [rock
MA Lawrence WCGY-FM 92.7 music on 67 kHz /
MA Waltham WCRB 102.5 192 kHz music [carrier
Burg] in addition to 87 kHz music [carrier
MS Grenada WDXB 100.1 paging 67 kHz, nr main/
MS Oxford WMMS 97.5 TX, m
MS: PRM network now has SCA in use at 67 kHz,
carrying such things as time signals from U. S.
Naval Observatory master clock (similar to WWV)
and NPR feeds, a short program about our local
system from WKSU Kent OH, and other features.
NC Asheville WKRR 92.3 rock, 67 kHz
NC Burlington WZUU 93.9 TX [something else]
NC Reidsville WMMO 102.1 1 tone (testing for /
NC Rocky Mount WFMA 100.7 92 kHz rock, as
well as 67 kHz music [to 67 kHz
NC Salisbury WRDX 106.5 AM relay, mt, /
OH Cincinnati WWUO "91.7 TX, 92 kHz, Mutual
Multicomm [to 67 kHz
WUBE-FM 106.1 92 kHz Muzak in addition/
OH Middletown WPFB-FM 105.9 92 kHz music
in addition to 67 kHz music
OH Piquette WPTW-FM 95.7 listed as no SCA. I
claim as having music, and have written Ralph
Strobel in IN to see if he can tune them in and
find out for us [92 kHz carrier with bursts
MN Minneapolis KTIS-FM "98.5 67 kHz data & /
ON AI AND DX READY (selected)
MS Jackson WMPR "90.1 j\$, 100000 h.v.; 450',
write to PDB 408, Tugboat MS 38371

HOW ABOUT AN SCA yellow pages' ad
from Santo Domingo? Sent by Richard
Clark, re HIXZ-FM 104.5 at 67 kHz. Use
your magnifying glass and translate away!

Música Ambiental
Radio Listín
DIFERENCIA CON AMBIENTE PERFECTO
AGENCIAMIENTO DE LA PRODUCTIVIDAD
FRECUENCIA ESTABILIZADA
E ALGO MAS QUE MÚSICA
MÚSICA AMBIENTAL EN ANGLÉS
MÚSICA AMBIENTAL EN ESPAÑOL
AMBIENTE AGRADEABLE Y DISTINGUIDO
INSTALACION Y SERVICIO
SERVICIO CONTINUO DE MANUTENCIÓN
DEBE LLEGAR ALMA HASTA LAS 24 HORAS DE LA MANUTENCIÓN
Radio Listín
Division M.F.L.
688-2033

FCC/FM
READERS' REPORTS AND OTHER FM NEWS

Speaking of Santo Domingo, I'll plug a book that I
enjoyed reading. It's Santo Domingo Journal, by DXer Jeff
White. It consists of 90 pages of narrative covering White's
recent adventures in the Dominican Republic when Radio
Earth was broadcasting over Radio Clarin. Buy it at \$7.95
from The Shortwave Store, N4561 Circle Drive, Cambridge
W1 53523. Tell 'em I sent you, although there's no commission
to me.
Rod O'Connor also sent a blurb from ALASKA
magazine about a local Seward group, Puffin Public Broad-
casting, selecting KSKA 91.1 Anchorage for rebroadcast
over its K201AO 88.1. It will get the KSKA signal via satellite,
which is illegal for "lower-48" translators to do. Moody Broad-
casting, however, has again petitioned the FCC for permission
for satellite and microwave feeds to its translators. Moody con-
tends that poor wintertime direct FM pickup make its mount-
tain top translators unreliable.

Walter Patton came through with new Canada time zone
boundaries, which will be shown in the new Atlas. He's not
sure which it is--Yukon or Northwest Territories--does not
observe daylight saving time. He also sent data to resolve some
of the conflicts I saw in going through FCC-NTIS lists, for
which I am also thankful. And he included an article on how
AM stations in Canada are losing audiences to FM, but not yet
at as fast a rate as in the U. S.

California news from John Jefferson: KFMP "89.7 Prune-
dale is aiming for early spring starting. No sign yet of KSOL-1
107.7 Pleasanton nor of KRQR-1 97.3 San Ramon. "KRQR is
so strong here the latter will probably be noticeable only by
the onset of multipath in the primary (and in fact might even
be on with DA away from me), but KSOL-1 will be quite
obvious. KSCO 99.1 Santa Cruz's move to Loma Prieta is
imminent: they're just waiting on the paper work." And John
snet a program guide for KUSP "88.9 Santa Cruz, with its
eclectic format. I notified KANZ "91.1 Garden City KS that
they were giving the wrong call sign for "98.3 Lamar CO, and
the director writes back: "You're right on the K252BY call. . .
We've corrected our ID."

Larry Fuss: "WVUA in Tuscaloosa is not the first or the
only station to operate vertical only. Several stations in Miss-
issippi have been doing it. I don't know why. It appears to
have been pioneered by the Mississippi Authority for Educa-
tional TV. . . Regarding IDs: The FCC's rules require that the
legal ID be given 'At the beginning and ending of each time of
operation and hourly, as close to the hour as feasible, at a
natural break in program offerings.' (Sec. 73.1201.) It used to
be plus/minus two minutes of top of hour. Stations like WHZZ
that ID at :50 or at :10 (or whatever) are bending the rules
just a bit regarding the 'natural break in program offerings.'"
WYAY here does the same thing. At :54 they do their legal
ID, 'WYAY Gainesville-Atlanta, etc.', and on the top of the
hour they normally just say "Y-106" and mention Atlanta.
They hide their call letters and their true city license at :54.
Seems to be a common practice, especially among "rim-
shotters". . . When an FM (or a TV) is part of a combo with the
same call letters, the FM (or TV) suffix is officially part of the
call letters and must be used even if the stations are not
simulcast. For example, here in Atlanta we have WSB, which
is an AM. The FM is WSB-FM and Channel 2 TV is WSB-TV.
On a legal ID, the FM and TV MUST include the suffix.
"And more (quoting from Sec. 73.1201): 'If the same
licensee operates an FM broadcast station and an AM broad-
cast station and simultaneously broadcasts the same program
over the facilities of both such stations, station identification
announcements may be made jointly for both stations for
periods of such simultaneous operation'. In the case of WLS
in Chicago simulcasting, the legal ID could consist of 'WLS
AM and FM Chicago', 'WLS/WLS-FM Chicago', or 'WLS FM
and AM Chicago'. To ID as 'WLS Chicago' would not be a legal
ID if a simulcast was in progress because it is IDing the AM
only. Continuing 73.1201: 'If the call letters of the FM station
do not clearly reveal that it is an FM station, the joint
announcement shall so identify it'. So if you had an AM
station with the call letters WAAA and an FM with the call
letters WBBB, and you were simulcasting, 'WAAA/WBBB
Podunk' would not constitute a legal ID. You would have to
say 'WAAA and WBBB FM Podunk'. You'd be surprised how
few people in radio are aware of that.

"The 'Foxy 96' nonID heard by Mike Dorner is WQFX
in Gulfport-Biloxi. They're on 96.7 with a black urban format.
The new WFTW 96.5 is not on yet. . . The chances are nil of
operating a commercial station below 92.1. The FCC is very

protective of channels reserved for noncommercial use."
Stations Larry mentioned as having v only in Mississippi are:
WJSU "88.5 Jackson, WMAA "91.3 Jackson and WMAB-FM
"89.9 Mississippi State, with a note with the latter saying:
"Wavier granted to radiate vertical only." Larry also sent an
article on broadcast industry mergers, with new owners
cautioned, in the next few years, to control programming
costs, which have skyrocketed in recent years, while revenue
growth is slowing. Most of that analysis, however, relates to
television, although radio's efficiency may have bottomed
out, with stations now using satellite and taped automation
being forced by competition in many markets to embrace
live operation, which of course is costlier for the stations.
He and W. R. McIntosh sent articles on how FM radio
station prices are soaring nationally. The article quotes
veteran broadcaster Gene Autrey as selling a Los Angeles
FM channel for \$45,000 in 1949. Autrey thought he could
tell a turkey when he saw it, and more than once Autrey
"scorned the chance to own an FM radio station for a few
thousand dollars. . . . 'It simply makes me sick,' Autry said."
Now, all I have to do is ask WHICH L. A. channel was sold
for \$45,000, and I am sure at least two of you will write
in and tell us all! Mc's other article was about KCRW "89.9
Santa Monica bringing in the new year with 30 hours com-
plete of James Joyce's "Ulysses." The station got permission
from Irish National Radio, along with the tapes which had to
clear customs in a hurry for the broadcast. I thought it was
public policy in Ireland to broadcast in Gaelic, not English,
so I wonder if the tapes were really in English.

Steve Apel was the first of three VUD readers so far who
have identified W65H as being on 46.5 mhz in Hartford CT.
From 1941-1943 the FCC had a system of station identifica-
tion different for FM than for any other band, before or since.
"the first letter, either W or K, was used to identify the sta-
tion's region--east or west of the Mississippi River. The digits
in the middle referred to the final two digits of the station's
frequency in the original 44-52 mhz FM band. The letter or
letters that followed were a shorthand for the station's city
of license. Thus, W65H was licensed to Hartford CT and
operated at 46.5 mhz." Steve has done a summary of major
FCC rulemakings that have affected the development of FM
radio. He plans to copyright the material, and offered to send
me a copy. I'll say right here that I would like to see the copy,
and Steve and I can decide later what if anything should be
used from his manuscript in this column or my newsletter.

Robert Baker sent an article about an unusual happening
in Iowa, with KUCB "89.3, a black-owned station, rampaging
off frequency, sometimes as far as 90.1, where it interferes
with WOI-FM Ames, or down to "88.9 to knock out little
KWDM West Des Moines. The KUCB transmitter is old and in
an old truck-trailer without heat. When it gets cold the trans-
mitter drifts. Zoning keeps it several blocks away from the sta-
tion's studio. WOI-FM engineers have offered to help, but
they find the KUCB engineers are part-time and do not return
calls. The stations are trying to solve the problem themselves,
rather than relying on the FCC.

Tim McVey, who supplied much of the SCA information
for his region of the country, is starting a rumor that WBAQ
97.9 Greenville MS will be getting new call letters. He's hearing
their identity as "Z-98." He "noticed in Dec. column
where 'jazz Bunks out' at WFAM 90.9 (FL). Crying shame. In
Knoxville, University of TN's WUTK 90.3 has eliminated or is
eliminating the jazz and reggae programs, the staggeringly
popular weekend r & b program, and the blues records to
develop a top-40 and new rock his format. How disgusting in
an area with two commercial rock-hits stations."

"Silent Radio's" only venture into FM-SCA (its other uses
are with TV vertical blanking interval) are at KXFM Santa
Maria CA. It uses an SCA data feed to send print messages to
public places, like restaurants. In Imperial CA, the FCC has
ordered KOZN 99.3 to show cause why its license should not
be revoked. The charge: unauthorized operation by an alien.
CA readers should check to see if KOZN is now on, and if it
continues to operate, Richard and Franklin Reese say WKFM
104.7 does ID as Fulton-Svaceuc, "at least sometimes." I also
list it as including Manlius NY in its ID.

From Pittsburgh, Marty Barvinchak sent news about
several stations not using their networks, some nonIDs, and:
"WYEP "91.3 is off the air indefinitely again--they are now
looking for a new studio location which would be more afford-
able. The transmitter is OK." Rimshotters WIYQ 99.1 and
WNQQ 106.3 "appear to be having a contest between them to

FCC/FM

sec which can produce the most outrageously poor on-air presence. Both production and audio quality are setting new lows on both stations, with WYQ being worse by far (wavering, fluttering phone-line quality taped music cut randomly at times—and you should hear what their compression does to this in the nulls between songs). The basic format of WIQQ is still country-oriented, but tends toward adult contemporary, especially in the evenings. WNOQ, on the other hand, is programming some sort of ridiculously varied CHR/rock/pop/oldies/MOR/easy listening/country/whateverelse format which they call "adult middle of the road." Imagine a 60s garage-rock tune segued into a Perry Como song. . . . You'll note that Pittsburgh radio is now more varied than ever—served by 4 CHR stations, 7 adult contemporary oriented stations, and 2 contemporary rock stations. Wonderful!!!! Finally, what is the status on low-power FM? I keep thinking I might even be interested in this myself someday. [I think the Moody proposal, reported above, is the latest. That would enable FM translators to pick up the primary station by satellite or microwave feed. I believe local origination by FM translator would be part of such a proposal, and that would, in essence, make for "low-power FM."]

Max Engel sent information on Hartford FM, including a copy of a letter he received, dated April 2, 1948, from WTHF-FM Hartford CT. The FM section of the March 29, 1948 "Hartford Times" accompanied the letter to Max, and guess what? Max sent me the entire paper, but it is falling to pieces so rapidly that I have not figured out a way to open it and photocopy the good stuff. There are several ads for radios from such companies as RCA Victor, Emerson, Fada and Stromberg-Carlson. I'll try to get to more of that next month, and to tell you more about WTHF-FM. Max comments: "I would like to give you my thoughts on the Ray Briem Show. I got up early to listen. It is unfortunate that Ray Briem did not devote any time to TV and FM DXing. The day before the program went on the air I telephoned the WABC program department and told them that in 1985 WABC cut off the Ray Briem show before it was over. I told them it would be a public service to have the entire program carried by WABC. . . Unfortunately, WABC cut off the program at 5 a. m. EST and there is no other station in the NYC area that carries the program. I would like to suggest that the WORLDWIDE TV-FM DX ASSOCIATION contact Larry King at WTOP Washington DC regarding a TV and FM DX program. . . . It was nice hearing you on the Ray Briem Show. Every afternoon WABC has time for Bob Grant to tell his listeners 'get off the phone, you creep'. They should be able to clear time to carry the Ray Briem Show in its entirety." From Max's letter: "I am enclosing the FM section of March 29, 1948, HARTFORD TIMES. On p. 5 it tells us that WDRC-FM Hartford is the successor to W65H. Pardon the appearance of this old newspaper, but I thought it may be of interest to you."

Dave Albert, of ABC, sent me a complete listing of the network's affiliates. The list covers all six ABC networks, including the Rock network. I have sent the list to Roger Winsor, who is living back in Champaign-Urbana IL, for analysis. I will omit from the list stations that only use the network for commercials, special events, or news actualities—stations that do not carry daily (Monday through Friday) at least one complete network newscast. Dave also sent a NY metro radio audience report from the Fall Arbitrons. Included, probably by error, is one noncommercial station: WFME #94.7 Newark NJ, which had a .8 for the highest rating for a religious station. I plan to write Arbitron and ask them to kick WFME out (since it qualifies as a noncommercial station, having translators in the 88-92 MHz part of the band reserved for education), or to include other public stations in the reports. The top 10 stations are WFLJ 95.5, WHTZ 100.3, WRKS 98.7, WOR 710, WBLS 107.5, WINS 1010, WLTW 106.7, WNEW-FM 102.7, WCBS 880, WPAT-FM 93.1. In all, 43 stations are listed, including scores of rim-shooters. One station not showing is WYRS 96.7 Stamford CT, which with its jazz format I thought would make it. Chicago ratings were also sent. The top 10 stations (with two tied for the tenth spot) were: WGN, WBMX, WGCI, WLOO, WFEM (AM), WLS (AM), WLUP, WBBM-FM, WLAK, WCLR, WUSN, with WFMT-FM bringing up the rear, at No. 18. And he sent a



February, 1986

Blaupunkt ARI road information system promotional card for the NYC area. The card information is dated, however, showing 100.3, the New Jersey-area station, as WVNJ-FM, not WHTZ.

Nick Lombardi kindly sent me copies of a two-part article on SCA that was in "Modern Electronics," Dec. and Jan. The circuit uses the XR-2211 chip, which my EL-II adapter uses, and includes a squelch or muting circuit. Nick comments: "The author of the article seems badly misinformed with respect to ARI, apparently unaware that the traffic information is on the MAIN FM channel, available to all; the ARI sub-carrier contains only continuous 'zone' tones and 'message alert' tones which activate the receiver and/or switch from tape playback to radio to insure that the traffic info is heard. . . I'm glad to hear that the new Atlas will soon be completed, but I do wonder what 'going to a computer' has to do with deciding whether or not to implement the new SCA categories." [I have a computer on order, which should come after Jan. 17. If I learn its operation quickly, I will make use of it to store and present the data, using this IBM Composer solely as an output device. If I do that, I will reformat everything, including the SCS categories, and will do away with the networks, at least in the geographical directory. If I do not use the computer in typesetting the Atlas, I will continue to type from the printout generated by keypunch cards. I will not change the system, if I must use the cards to generate data, but will do so at the time I go to the computer. At that time I also expect to recalculate all antenna heights in meters and use the new FCC metric curves in calculating coverages. Miles will disappear, as they should have ten years ago. Finally, I will catch up to that most conservative of all government agencies, the FCC, which went metric some time ago. I will, however, keep the scale of miles on my maps for one more edition, but expect to convert that up in the future. I plan to recalculate all coverages using the new curves rather than just recompute mi into km. This will reflect the newest thought in FM coverages, and make for the most accurate data I can present. How much of this I can do in the next month or two is uncertain. I think you'll like the final product, even if you are not presently a fan of the metric system.]

Paul Gaines sent official word on the sale of WWJ-WJOI (FM) Detroit to a group of local investors for \$39 million. Detroit's top radio stations in the ratings are: WJR 760, WJLB 97.9, WJOI 97.1, WRIF 101.1, and WWJ 95.0.

Ron Wing contributes to the column from Wichita. He's hearing K261BL 100.1, a KCFO-FM 98.5 Tulsa OK translator. "The translator seems to have a great deal of trouble receiving its primary station. The broadcast signal would get extremely noisy, then the translator would shut itself off, then after a while it would turn itself back on with an extremely noisy signal, which would gradually improve for a while; and then the whole thing would happen again. The next day I did not hear the translator on the air at all." Shows what happens when broadcasters try to stick translators out too far for them to reliably receive the main channel.

Frank Sulek sent a long write up from Joe Sullivan, the broadcast coordinator of the Empire State Building, mentioning the stations on the master antenna. All of that agrees with the information published here before, with the exception of WNYC-FM, which has a c.p. to broadcast from the World Trade Center, but which is still at the ESB. The report says: "A number of FM stations had applications to move to the World Trade Center, but did not follow through. They would have been subject to adjacent channel interference in some cases from FM stations in other cities. Those that wouldn't have and didn't move would have caused interference with other stations. Even FM stations now on the World Trade Center have complained of adjacent channel interference problems." The report does not mention the stations receiving or causing the alleged interference.

Richard H. Perrin: "At 2:16 p. m. Dec. 10 Simon Geller, 65, of WVCA 104.9 Gloucester MA broke into his taped program to jubilantly announce that the FCC had unanimously voted to renew the WVCA license. The case took 11 years." Although WVCA is commercial, it carries advertising from only four local businesses, and is supported primarily by listener contributions.

"Radio's Weaker Signals Crying for Help" is another article Mc sent from CA. It details KP00 San Francisco, and its poor finances, especially after the CA governor cut off state funding for public radio. The station's \$97,000 annual budget

FCC/FM

comes from such things as listener contributions, T-shirt sales, and the State Arts Council. KIDE, operated by the Hoopa Indian tribe near Eureka, is said to be in desperate straits, with KIDE's future uncertain.



R. H. Perrin says "Almost totally my listening is to serious music stations either from Portland or Boston, and sometimes to WVCA. WVCA is mono only and at a distance of 50 air miles with a 3 kw power output is received here quite well. . . . There are many days when out-of-state signals wipe out even locals only 30 miles away. Oddly enough, not always is there anything doing on FM at the time distant TV stations are popping in."

Al Germond also solved the W65H mystery of last month, and gives other early FM histories: "W51C, the Zenith station in Chicago, was at 45.1, W55M, the Milwaukee Journal adjunct to WTMJ was at 45.5, W59C, the FM side of WGN was 45.9. . . There was K45LA (Don Lee, Los Angeles, now whatever the RKO General station is at 101.1; a direct connection exists!), W45BR (Baton Rouge LA, still owned by the Manship family 45 years later!), W31NY, W45NY, W59NY, W63NY, W67NY, W71NY and W75NY all NYC. . . . WQXR's pioneer FM outlet operated as WQXQ several years, WGNB was the FM side to WGN and WHNF was the FM partner to NY's WHN-AM. [As is KSJL, the FM partner to WSUI (AM) Iowa City, and dating back to the 40s—b.c.]. But back to WDRC-FM, W65H, W1XPW, etc. Franklin Doolittle (the late, he died in 1984) started WDRC AM in 1922 and owned it until 1959. It figured in the mid-20s with another AM station (WPAH) in early binatural/ stereo broadcasts. High frequency operation traces to 1936, but this may have been just a typical AM relay between 30-40 MHz which was quite common in the period. We do know that Doolittle was a friend of Armstrong's and early on embraced the Major's FM experiments. An inveterate experimenter, Doolittle may have experimented with FM as early as '36 (the IRE demonstration was in 11-35) . . . We do know Doolittle had an experimental authorization in the 40 mHz range under the call W1XPW and built a 1 kw facility south of Hartford on Meriden Mountain which went on the air in summer '40. This was an exciting period in the developmental phase of FM with Daniel Noble, a U. of CT professor successfully demonstrating mobile FM police radio, resulting in its adoption by the CT State Police and other departments around the country. Noble then went to work for Motorola, theretofore principally a car receiver maker. But mobile radio is another story. The Meriden Mountain rig consisted of a 1 kw transmitter feeding a 6-bay turnstile antenna with open lines. Since the cables were short, this arrangement probably yielded something in the order of 5 or 6 kw. The WDRC-FM promontory overlooks the populous Connecticut River valley; even then, several million potential listeners were within 75 miles, the probable 50 uv/m radius (at 40 mHz). Of course, 1-1.41 marks the date W65H came into existence and those calls were used until WDRC-FM (still at 46.5) took over in '43. The billboard pix was widely reproduced in various trade magazines in 1941." Al sent one from Milton Sleeper's "FM" magazine, Oct., 1941.

"At this time there was lots of FM activity within 100 miles of Hartford. There were two outlets in the Worcester MA area including the 50 kw (more like 400 kw wrt!) Yankee Network outlet high on Mt. Asnebuskit. And WTAG-AM had an FM adjunct as well. Travelers Insurance opened an FM adjunct to its WTIC-AM and Westinghouse had an FM adjunct to WBZA (the synchronous relay for WBZ-AM) in Springfield.

"Although Geller's station is commercial, it carries advertising from only four local businesses and is supported primarily by listener contributions"

More ambitious listeners could hear WGFM, the Schenectady NY GE outlet, Yankee's Mount Washington NH relay (at 6290 feet above sea level) plus a half dozen NYC area outlets, including Armstrong's own 40 kw W2XMN. We also know from personal experience typical FM units of 1940-42 were hot performers, virtually all with tuned RF stages and enough IF amplification to hiss loudly between stations and if licensed Armstrong circuits, with two limiters to keep AM out. [FM suffered for years after the war because only a few manufacturers wanted to spend the money to produce quality circuits; the move to 100 mHz was ahead of cheap receiver technology and many shortcuts were taken to compete with the flood of cheap plastic AM sets that flooded the 1946-50 replacement market.]

"WDRC-FM operated until an unknown date in the late 1950s when the license was apparently surrendered. Then, mysteriously, it came back on the air in 1959; I recall hearing it that year but being told there had been a lengthy period of silence; of the Hartford stations, only WTIC-FM carried on during FM's mid-50s bleak period. So now WDRC-FM continues, claiming in "Broadcasting Yearbook" 1936 as its year of origin but apparently forgetting the 1950s hiatus. . . . I may also send a copy of an early FM dial with the call numbers. Philco, Freed-Eisemann, Zenith and GE all produced receivers (which I have) utilizing the call numbers. It was a good idea in its day but obviously coming up with hundreds of city letter combinations would have been a killer: Pittsburgh got the simple letter P while its much larger cross-state rival took on PH." [And I suppose Punksutawney would get PU1—b.c.]

If space permits, I'll try to provide some historical FM pictures. Meanwhile, here are this month's CONTRIBUTORS: David R. Alpert, ABC, New York NY; Steve Apel, Philadelphia PA; Robert Baker, Humboldt IA; Marty Barvinchak, Pittsburgh PA; Jim Bell, Bloomington IL; Waldo F. Bishop, Tallahassee FL; John Ebeling, Bloomington MN; Max Engel, Brooklyn NY; Wendell Ford, Westville IN; Larry Fuss, Jackson GA; Paul L. Gaines, Detroit MI; Dr. Al Germond, Columbia MO; Larry Hart, Inglewood CA; Quentin Hope, KANZ, Pierceville KS; John M. Jefferson, Pleasanton CA; John Lapp, GA; Nick Lombardi, Atlanta GA; John B. Manuel, Ruston LA; W. R. McIntosh, Granada Hills CA; T. K. McVey, Knoxville TN; Bill Myers, Carlisle PA; Rod O'Connor, Kodiak AK; Walter Patton, Willowdale ON; Richard H. Perrin, Wells ME; Keith Pugh, New Hope AL; Richard Reese, Jersey Shore PA; Frank Sulek, Carteret NJ; Mark A. Voth, Waverly IA; Larry Weil, Acton MA; Ron Wing, Wichita KS; Roger Winser, Champaign IL.



FM DEMONSTRATION DRAWS CROWDS AT G. FOX & CO. STORE, HARTFORD CT. FROM "RADIO RETAILING," DECEMBER, 1941, AND SENT BY AL GERMOND.

UPDATE

STEVEN P. SPRACHMAN
 15 Berry Lane
 Micksville, NY 11801-6203
 516-731-3305

TODAYS MAIL

I get a lot of mail each week regarding my work as the club's representative to ANARC. Today, I got several letters that may be of some interest to the membership.

A few months back, I wrote an editorial about the sponsorship of ANARC conventions. I wrote a letter to the Executive board of ANARC with the same comments. The letter and the editorial were photo-copied and sent to all the board members. Well, today I got a response. The response was from Harold Sellers of the Ontario DX Association. He felt that many of my ideas were unworkable. I felt that the sponsorship of the convention could be rotated among the ANARC member clubs. He opposed this by saying that since these clubs are voluntary, then the sponsorship of the convention should be voluntary. Mr. Sellers felt my idea of rotating the convention by geographic area would deter potential sponsors by making ANARC seem like a tyrant, telling people what to do. He then states "Clubs which now hold their own annual conventions might consider foregoing their own convention one year and sponsor the ANARCON. This would introduce their members to ANARC and introduce other ANARC Clubs and their members to the host club." He continues by challenging WTFDA to be the first club to volunteer. I think that this is a great suggestion. I think that WTFDA should that up the challenge. I'd like to hear from everyone about the idea of hosting the 1988 ANARC Convention in place of the WTFDA Convention. And I am willing to work on such a convention with any interested members anywhere in the U.S. Let's do it soon so we can put in a bid for 1988!

My next letter was from Terry Colgan, Executive Director of ANARC. He greatly enjoyed attending the 1985 WTFDA Convention in New Orleans and he enjoyed meeting all who attended. He stated that we can not continue to complain about the lack of programs for TV and FM DX'ers at ANARCON's unless we offer to help. He is looking for volunteers to hold talks about TV and FM DX'ing. I am planning to attend this years convention in Montreal (July 18-20). I would like to hear from anyone who is planning to attend so we can set up a program. If anyone would like to send a copy of a tape of their FM DX, a video tape or slides of their TV DX, or has any suggestion on how we should run such a program, please write. A program by WTFDA would be the best publicity that the club can get.

My final letter in today's mail was from Don Hosmer. He was my roommate at the Washington D.C. ANARCON in 1983. He is now the head of a fine new local DX club for the state of Michigan called the MICHIGAN AREA RADIO ENTHUSIASTS(MARE). His club has regularly scheduled meetings, a place to hold DX'peditions and they publish a bi-monthly bulletin. For more information, write to Don c/o MARE, 24500 Union, Dearborn Mich. 48124 USA. Tell him you heard about MARE from WTFDA.

There is one comment from Don's letter that I'd like to share. Don stated that one MARE member near Brighton, Mich. "picked up and video taped a Mexican TV station on UHF". He couldn't give me any exact details. I hope Don suggested to this MARE member to join WTFDA, if he is not already a member.

That's it for this month.

73's,

*Steven P. Sprachman
 and my ~~assistant~~
 postal carrier)*

Worldwide TV-FM DX Association

FEEDBACK

WTFDA'S CO-FOUNDER
 MORRIE GOLDMAN ANNOUNCES
 RESIGNATION FROM CLUB
 BOARD OF DIRECTORS

After considerable thought, I have decided to tender my resignation as a board member of WTFDA...in recent years, the free time that I have had available to the club has been very limited. My look ahead into 1986 points to more of the same. As a result, I must relinquish my board post so that a more active member can takeover. I do believe that this is in the best interest of WTFDA.

As co-founder of WTFDA, and as one who has worn many hats in the organization, I can honestly say that active participation has been personally very rewarding. The more active, the more new friends and the more visible the fruits of labor become. I strongly encourage WTFDA members who have not taken a role in the organization to become active. There's plenty of opportunity in editorial, publishing, special projects, convention hosting or even membership drives. You can "do your own thing," help others and enjoy the process. I've been VUD editor, publisher, column editor, article writer, publicist, literature creator, convention host, grunt and bottle washer...and I'd do it all again...and who knows, may yet one day...

I'm certainly no the only one with a record as a do-er. Too many to name have gone above and beyond the call of duty. But that's history. As the count once said, "today we need new blood."

WTFDA needs more activists who not only enjoy their hobby, but enjoy preaching the gospel of DXing...zealots who will help spread the word about every aspect of the hobby and pump vitality into the organization. That can't happen with the same group of "leaders" every year.

I look forward to my continuation as a supporting member of WTFDA and have just renewed. This coming year, I should have a "real" antenna system up for the first time in a number of years. Hopefully I'll have DX to report. I also hope to attend the '86 convention, and perhaps even submit an article of two to the VUD.

Clearly, WTFDA has many challenges and opportunities facing it. We're not perfect, but we're not bad either. The active support of just a dozen or so additional members could make a world of difference in the VUD and the vitality of the club.

In addition, I strongly believe that WTFDA must embrace the microcomputer revolution with open arms. For example, the WTFDA TV STATION GUIDE, once fully on-computer (both tables and maps) could be updated easily on an ongoing basis, so that every year--without fail--we could have a new edition in time for the DX season. (That could also keep us financially solvent for years to come without frequent dues increases.) For the latest news of new stations and actual DX reports, it's not beyond reason to imagine WTFDA having its own computer bulletin board. Members would be able to dial in, read the latest happenings, add their own reports and perhaps even alert others to current DX conditions. This sort of instant communications is already commonplace in other hobby areas. There are many other potential applications for computers to simplify the work of volunteers and improve efficiencies. Some of our members have already been involved in computers for years. We should try to benefit from their experience--I know they're out there--and ask for help.

Let's keep the energy levels high and look forward to more years of growth, and service to DXers everywhere. WTFDA has had a remarkable record for years of serving a dedicated membership, and if we play it right, the future could be even brighter.

Thanks for the memories and those yet to come.

--Morrie S. Goldman
 WTFDA BoD Member (retired)

VHF UTILITY DX

DONALD L. BLEVINS
3615 EAST LOMBARD STREET, BALTIMORE, MD 21224-2408
PHONE # 301-522-2089

VHF UTILITY DX...This month will focus in on Highway Maintenance frequencies, call signs and locations. For those of you who have read my monthly feature for some time may remember that I did list the frequencies of these agencies. I would like to point that the frequencies I have listed are used exclusively by State Highway Agencies, as the FCC has allocated State Agencies separately from local agencies. This type of information is a great deal easier to research.

10-14-85	KNEN-660	155.385	Sprinfieid, MA	Springfield Hosp &
10-14-85	KCD-384	033.94	Manchestester, CT	Manchester Fire
10-14-85	KCC-672	033.94	South Windsor, CT	South Windsor Fire
10-14-85	KCB-457	033.86	Newton, CT	Newton Fire
10-14-85	KCF-596	033.86	Brookfield, CT	Brookfield Fire
10-14-85	KCF-587	033.86	Monroe, CT	Monroe Fire
10-15-85	KKL-668	155.385	Hartford, CT	Community Health Su
10-15-85	KCA-394	155.07	Westmoreland, NH	Police Department
10-15-85	KCD-472	033.94	Windsor Locks, CT	Fire Department
10-15-85	KCF-569	033.78	Tolland, CT	Fire Department
10-15-85	KQW-555	033.64	Willimantic, CT	Fire Department
10-15-85	KDC-882	156.00	Town of Newington	Town of Newington
10-15-85	KRA-486	155.34	Winsted, CT	Mem Hosp/Ambo
10-15-85	KJJ-377	046.18	Cromwell, CT	Fire Department
10-15-85		046.18	Middletown, CT	Fire Department
10-15-85	KCH-884	046.06	Naugatuck, CT	Fire Department
10-15-85	KCH-245	046.18	Haddam, CT	Fire Department
10-18-85	KEF-222	046.46	West Babylon, NY	FPD
10-18-85	KYP-496	155.55	East Longmeadow, MA	Police Department
10-19-85		039.14	Lafayetteville, NY	Police
10-19-85	KCF-589	033.86	New Fairfield, CT	Fire Department
10-19-85	KEV-444	155.355	New Britian, CT	General Hospital
10-19-85	KCE-721	033.70	Litchfield, CT	Fire Dispatch
10-21-85	KCI-233	033.66	Watertown, CT	Fire Department
10-21-85	KEE-576	046.46	North Babylon, NY	Fire Department
10-21-85	KEG-977	046.46	Selden, NY	Suffolk County Fire
10-21-85	KXV-489	033.94	Grandby, CT	Fire Base
10-21-85	WRX-703	046.50	West Haven, CT	Fire Department
10-21-85	KZC-491	033.70	Barkhamstead, CT	Pleasant Valley FD
10-21-85	KCE-454	033.70	Morris, CT	Fire Department
10-21-85	KTS-493	154.86	Cheshire, CT	Conn State Police
10-30-85	KCC-712	155.52	West Sprinfield, MA	Police Department
10-30-85	KTD-334	460.125	Manchester, CT	Polcie Department
10-30-85	WXV-455	461.60	Bolton, CT	Propane Gas Srvc Co
10-30-85	KBP-809	033.72	Bloomfield, CT	Fire Department
11-03-85	KNFP-321	154.205	Newburgh, NY	Cronomer Valley FPD
11-03-85	KCD-305	155.61	Windsor Locks, CT	Police Department
11-03-85	KCB-280	033.98	Waterbury, CT	Fire Department
11-04-85	KCH-462	155.76	East Longmeadow, MA	Civil Defence
11-04-85	KSE-695	033.86	Poundridge, NY	West Chester County
11-04-85	KRI-572	033.70	New Hartford, CT	Fire Department
11-09-85	KUO-819	460.425	Newington, CT	Police Department
11-12-85	KCE-357	033.70	Bethany, CT	Volunteer Fire
11-12-85	KNGT-951	033.70	Harwington, CT	Volunteer Fire
11-12-85	KYF-457	033.70	New Hartford, CT	South End VFD
11-13-85	KCA-773	039.90	Norwich, CT	Police Department
11-25-85	KEG-707	462.95	Wethersfield, CT	Volunteer Ambulance
11-25-85	KFN-656	033.86	Thompsonville, CT	Fire District
11-25-85	KNVG-845	046.18	Portland, CT	Fire Department
11-25-85	KIU-252	033.94	Windsor Locks, CT	Hartford County FD
11-25-85	KCG-651	033.70	Derby, CT	Fire Department
11-25-85	KCF-460	033.70	Warren, CT	Volunteer Fire
11-25-85	KCT-676	033.70	Harwinton, CT	West Side VFD
11-25-85	KCE-357	033.70	Bethany, CT	Fire

Bill Nollman
Fitchburg, CT
Reports

Nollman (continued)

12-04-85		450.45	New Haven, CT	WTNH TV 8 News Crew
12-04-85	WRB-572	453.15	Springfield, MA	Town of Springfield
12-04-85	KOI-316	033.90	Cincinnati, OH	Hamilton County Com
12-04-85	KQJ-943	033.80	Dublin, OH	Washington Twp Fire
12-04-85	KDP-455	033.98	New Concord, OH	Fire
12-04-85	KQL-885	033.96	Montville, CT	Fire
12-08-85		033.82	New Haven, CT	Fire
12-08-85	KCG-249	033.70	Southbury, CT	Fire
12-08-85	KEM-734	033.74	Canton, CT	Fire
12-10-85		154.355	Manchester, CT	Fire
12-10-85	KDU-448	154.40	Springfield, MA	Fire
12-10-85	KCD-575	033.62	Cheshire, CT	Fire
12-10-85		046.18	Portland, CT	Fire

COLORADO 47.02

Bald Mountain	KBI-914
Baxterville	KJW-715
Buckhorn Mountain	KFN-697
Canon City	KBI-903
Castle Mountain	KFN-698
Cedar Mountain	KFN-699
Cheyenne Mountain	KFN-700
Cheyenne Wells	KBI-913
Copper Mountain	KBI-912
Delta	KBI-858
Denver	KZQ-804
Dolores	KBI-910
Durango	KFN-708
Frisco	KJW-716
Grand Junction	KFN-704
Grand Junction	KRA-533
Hot Sulphur Springs	KBI-907
Hugo	KFN-703
Julesburg	KCM-881
La Veta	KFN-702
Lamar	KJW-722
Meeker	KBI-902
Mines Mountain	KBI-903
Montrose	KBI-906
North Mountain	KBI-908
Duray	KIT-254
Pagosa Springs	KJW-714
Pool Table Mountain	KFN-701
Salida	KFN-695
Silverthorne	KVN-621
Springfield	KBI-900
Sterling	KFN-705
Sunlight Peak	KBI-905
Trinidad	KBI-904
Vail Village	KJW-717
Walton Mountain	KFN-696
Wray	KBI-901

DELAWARE 47.22 47.34

Delaware City	KCV-371
Dover	KGD-205
Georgetown	KGE-556
Georgetown	WZX-933
Harrington	KGE-482
Lewes	KSZ-257
Middletown	KGE-666
Seaford	KGE-481
State Road	KGC-901
Wilmington	KJY-832

WEST VIRGINIA 47.14 47.28 47.36

Amma	KNAE-808
Arista	KQF-370
Baker	WQK-453
Buckhannon	KQD-269
Burlington	KVC-845
Burnsville	KVC-981
Charleston	KNAG-316
Charleston	KNAL-535
Charleston	KQD-428
Clarksburg	KQA-406
Clarksburg	WXB-726
Clarksburg	WKF-747
Clay	KQF-390
Clay	WXB-726
Clayton	KQD-386
Elkins	KBM-946
Franklin	KQE-882
Greenwood	WXB-727
Huntington	KFB-589
Huntington	KNBN-600
Huntington	KVC-772
Hurricane	KFD-563
Hurricane	KNAE-807
Job	KQE-665
Judy Gap	KQG-484
Kanawha Falls	WQH-317
Keyser	KQD-271
Kimball	WQF-391
Lookout	KQG-483
Madison	KQF-389
Mannington	WQD-433
Marlington	KQE-887
Martinsburg	KVC-681
Martinsburg	KVC-688
Moundsville	KQD-276
New Martinsville	WXB-729
Oak Hill	KQE-446
Ona	KQB-524
Parkersburg	KQD-270
Parsons	KQF-795
Pineville	KQF-786
Point Pleasant	KQF-394
Princeton	KNDB-942
Red House	KQE-885
Ripley	KQA-405
Scary	KNAW-417
Sissionville	KCN-976
Skellton	KTC-396
Summersville	KQE-678
Sutton	KVC-431
Talcott	KQF-291
Thomas	KJW-454
Union	KQF-786
West Hamlin	KQF-794
Wheeling	WXB-730
White Sulphur	KJW-730

Alamo KOI-349
 Arden KJV-224
 Austin KJW-571
 Austin KBN-829
 Baker KOG-965
 Basalt KOK-672
 Battle Mountain KAG-229
 Beatty KDN-439
 Blue Jay KCU-291
 Carlin KFE-357
 Carson City KJK-529
 Carson City KOF-525
 Carson City WSB-881
 Contact KOG-959
 Contact WYG-237
 Current KNBF-241
 Current KOK-364
 Currie KOG-957
 Dayton KAX-225
 Denio KOK-245
 East Ely KOG-967
 Elko KJD-580
 Elko KOG-374
 Elko KOI-367
 Elko KRP-756
 Elko KTN-417
 Ely WYD-952
 Ely KAS-295
 Eureka KRP-757
 Fallon KZH-911
 Ferguson KOG-956
 Fernley KJE-962
 Gardenville KJV-226
 Glendale KOK-207
 Goldfield KWO-438
 Hawthorne KTT-914
 Imlay KON-464
 Incline KCY-618
 Lake Tahoe KOI-721
 Las Vegas KNAP-570
 Las Vegas KOG-961
 Las Vegas KOI-551
 Lovelock KFM-308
 Lovelock KRC-575
 Lund WYV-398
 Mesquite WRE-358
 Mina KTT-913
 Nixon KAX-242
 Nixon KJL-674
 Northfork KOG-960
 Oasis KTN-408
 Orovada KOL-783
 Orovada KIT-640
 Pioche KLD-743
 Pioche KOL-663
 Reno KOG-997
 Reno KOF-525
 Reno KWE-506
 Round Mountain KAS-607
 Ruby Valley KOP-241
 Searchlight KDT-308
 Searchlight KNAP-569
 Springdale KGW-673
 Tonopah KOG-962
 Tonopah KOI-769
 Tuscarora KAT-805
 Virginia City KJV-225
 Warm Springs KCP-498
 Wellington KOG-373
 Wells KJE-961
 Wells KTT-951
 Winnemucca Mountain KOG-375
 Yerington KBY-481
 Zephyr Cove KJH-637

Alton KGB-854
 Bartonville KGE-567
 Bedford KTH-649
 Blue Knob KBG-658
 Brookville KSM-985
 Buckingham KGB-578
 Butler KGB-785
 Carlisle KGB-670
 Catawissa KGB-668
 Center Valley KGB-673
 Chambersburg KGB-666
 Clarion KGB-608
 Clarks Summit KGB-574
 Coudersport KGB-855
 Danville KGB-678
 Dauphin KGB-562
 Eagleville KGB-675
 Easton KGB-676
 Ebensburg KGA-506
 Elizabethtown KDX-213
 Emporium KSO-795
 Erie KGA-505
 Franklin KGA-295
 Franklin Township KGB-690
 Gettysburg KGB-665
 Greensburg KGB-717
 Hamburg KDL-940
 Harrisburg KDL-942
 Huntingdon KGB-657
 Indian Orchard KGB-568
 Indiana KDL-941
 Indiana KGB-720
 Karrtown KGA-503
 Kittanning KGB-719
 Lancaster KGB-572
 Lehighton KGB-674
 Lewisburg KGB-672
 Lewistown KGB-655
 Loganton KGB-852
 Markton KGB-734
 McConnellsburg KGB-654
 Media KGB-576
 Mercer KGA-504
 Mifflintown KGB-581
 Milford KGB-570
 Montrose KGB-569
 New Bloomfield KGB-667
 New Castle KGB-442
 Penn Hills Twp KGB-716
 Philadelphia KGB-577
 Pittsburg KNAQ-439
 Pleasant Gap KGB-850
 Pottsville KGB-575
 Reading KGB-679
 Rochester KGB-718
 Rosemont KGC-835
 Saint Marys KGB-851
 Selingsgrove KDL-943
 Shawville KGB-853
 Somerset KGB-691
 Sunbury KGB-565
 Tionesta KGB-443
 Towanda KGB-573
 Tunkhannock KGB-677
 Uniontown KGB-689
 Warren KGA-502
 Washington KGB-717
 Waynesburg KGB-688
 Wellsboro KGB-563
 Wilkes Barre KGB-571
 Williamsport KGB-566
 York KGB-669

VIRGINIA 47.22 47.30 47.32
47.34

Abington KID-527
 Accomac KID-544
 Albemarle County KIC-255
 Amelia KID-557
 Amherst KID-563
 Appomattox KID-562
 Arlington County KFG-598
 Ashland KID-553
 Bedford KIC-929
 Bland County KTE-716
 Brookvale WRE-241
 Chesapeake KIC-540
 Chesapeake KRE-523
 Christiansburg KIC-923
 Church Road KNAT-711
 Colonial Heights KIG-861
 Covington KLR-267
 Croaker KUB-901
 Culpeper KIC-641
 Danville KKV-741
 Dillwyn KID-560
 Dublin KLE-692
 Eastville KKV-746
 Edinburg KIC-251
 Falmouth KID-552
 Fancy Gap KFF-516
 Farmers KID-549
 Farmville WRE-239
 Fishersville KUG-785
 Floyd County KIK-322
 Franklin KID-545
 Fredricksburg KID-552
 Free Union WSB-852
 Fremont KRF-323
 Gloucester KNBL-335
 Green County KIX-772
 Hague WRE-242
 Halifax KID-559
 Hampton KII-401
 Hanover County WBJ-947
 Harrisonburg KIC-254
 Henrico County KVM-211
 Hillsboro WSB-854
 Hillsville KIC-932
 Independence KRZ-307
 King George KID-550
 King William County KSL-263
 Leesburg KIC-257
 Lexington KIC-248
 Long Mountain KIE-817
 Louisa KIC-256
 Luray KIC-640
 Marion KRF-324
 Marshall KUY-449
 Martinsville KIC-331
 Massanutten Mountain KEW-980
 Massaponax KRF-321
 McKenney KUB-902
 McKenney KRF-322
 Moccasin Gap KUY-326
 Montgomery County KUY-904
 New Kent County KIF-711
 Newport News KFR-435
 Norfolk KFY-442
 Norfolk KNBN-811
 Norfolk KRZ-309
 Norton KIF-670

ALASKA 47.06 47.14

Anchorage KAK-902
 Anchorage KDZ-486
 Anchorage WOS-901
 Anchorage WGU-319
 Birchwood WQQ-335
 Black Rapids KZE-627
 Cantwell KTG-677
 Chandalar WOS-299
 Coldfoot WRV-718
 Cordova KCN-640
 Craig KTA-974
 Deitich KNBU-375
 Dillingham KJF-704
 Ernestine KBL-882
 Fairbanks KBY-358
 Fairbanks KGX-935
 Fairbanks KCN-204
 Girwood KCN-641
 Glennallen KBL-876
 Gustavas KCE-648
 Haines KCN-642
 Healy KLP-884
 Homer KCN-643
 Hope WSZ-324
 Hyder KZO-356
 Johnson River KCN-644
 Juneau KAK-904
 Juneau KLV-255
 Juneau KLY-237
 Juneau KLY-238
 Kalsin Bay KUY-632
 Ketchikan KRM-823
 Moose Bay KCN-646
 Naenak KXJ-234
 Nelchina KLF-883
 Ninilchik KCN-647
 Nome KGW-685
 Nome KZR-672
 North Kenai KCN-645
 Palmer KBL-881
 Paxson KBL-880
 Petersburg KVP-772
 Prospect KNAB-285
 Prospect WSW-741
 Seven Mile KNAB-286
 Seven Mile WQM-706
 Seward KCN-648
 Silvertip KCN-649
 Sitka KRX-397
 Skagway KZV-366
 Slana KBL-879
 Sunrise WSZ-323
 Talkeetna KTG-603
 Tok KBY-778
 Tok KCN-652
 Trappers Creek KNAB-910
 Trims Camp KCN-651
 Valdez KAX-903
 West Fork KIJ-207
 Willow KBN-460
 Whangle KCE-446
 Yakutat KZO-357

SPECIAL REPORT

MORE ON ARGENTINA FM DX
FROM ANSELMO ROCCAFORTE

On Tuesday, 15 October 1985, there was a new Transequatorial (TE) F2 opening from Cental America during the 1940 to 2025 EST period. I have heard these frequencies:

- 88.1 MHz Radio Revelacion, Guayama, PUERTO RICO.
- 87.7 MHz unidentify, in Spanish
- 88.9 MHz maybe WJDZ-FM Levitton, PUERTO RICO. In English
- 90.5 MHz unidentify, in Spanish; the frequency doesn't belong to Puerto Rico; the station belonged to the Presbyterian Church.
- 91.3 MHz unidentify, in English, maybe WIPR-FM San Juan PR

I don't know if WJDZ and WIPR broadcast in both languages; if anyone has information about it, it could be useful to help me identify.

* * * * *

With the approach of the Spring, in this part of the world, the DX in the bands above 30 MHz had increased in a dramatic way.

During the last week of September the tropo propagation over the Rio de la Plata had been enhanced, because an anticyclone system was stationary over a big area.

I had received a new FM station from Uruguay: CX 222 (92.3) Emisora Libertador FM Stereo, FM Florida City. It is a low power station, and it is situated 150 miles from my home; now the station can be heard daily. During my first reception, September 26, 1985 0900 EST, it was possible to hear, during the fadings of CX 222, a FM station from Asuncion, PARAGUAY (700 miles from my home) on the same channel, 92.3 MHz.

Early the same morning, 0600 EST, 1000 GMT, I had heard LRH 251 Radio Chaco FM, Resistencia, Argentina, 101.5 MHz (450 miles).

The VHF ham band had benefited, too, with the tropo propagation. The repeaters of Montevideo, Uruguay (output = 147.240 MHz, input +.600) was used as a bridge by hams from Argentina and Uruguay, with a total distance of near 400 miles.

During the earthquakes in Mexico our repeaters had been used to collect the names of Argentine citizens living in Mexico City, and passed to Mexico on 14151 kHz USB.

* * * * *

Five years ago I bought a Bearcat 220, and after 4 years of heavy use I had problems with the keyboard. A year ago, I wrote a letter to Electra asking for a new keyboard; they sent me a letter with the price of \$5 U.S. and \$15 U.S. for handling and shipping. I sent a check for with the amount but I never received the keyboard, nor an answer. During this year I sent three letters with only one result: no answer. One day I was reading the 1985 edition World Radio TV Handbook and I read UNIDEN Corp. had taken over Bearcat; I wrote a letter, and after 20 days I had received a new keyboard by mail at my home, and now the Bearcat works 100%. Uniden sent me the keyboard without my having to pay again, which is now impossible for me to do due to economic restrictions on sending money to foreign countries from Argentina.

SPECIAL REPORT

More On Argentina FM DX

FM in Buenos Aires

Buenos Aires is the capital city of Argentina, in which nearly six million people live, and seven million in suburban areas. I live 45 miles from Buenos Aires. There are 11 FM stations on-air, all of which have studios and transmitters in the city. This list shows the actual status:

- 91.9 MHz LS 1 Radio Municipal (non-commercial, municipal)
- 94.3 MHz LR 1 Radio El Mundo (commercial)
- 95.1 MHz LS 10 Radio Del Plata (commercial)
- 95.9 MHz LR 4 Radio Splendid (commercial)
- 96.7 MHz LRA 38 Radio Nacional (non-commercial, governmental)
- 97.5 MHz LR 2 Radio Argentina (commercial, new station)
- 99.1 MHz LRA 37 Radio Nacional (non-commercial, governmental)
- 99.9 MHz LR 6 Radio Mitre (commercial, not yet on air)
- 102.3 MHz LR 9 Radio America (commercial, new station)
- 103.1 MHz LS 5 Radio Rivadavia (commercial)
- 105.5 MHz LS 4 Radio Continental (commercial)
- 106.3 MHz LS 6 Radio Buenos Aires (commercial)

As can be seen in the list, there are three non-commercial stations. The format of Radio Municipal is classical music. Radio Nacional is the governmental station, which have a network of AM stations which covers all of the country, with a few SW outlets. The head of the network is LRA 1 Radio Nacional Buenos Aires on 870 kHz (100 kW). The channel of FM's LRA 37 broadcasts the same program as AM, but LRA 38 has a different program in stereo during the afternoon and the night. The format of their programming is classical music, news programs, folk music.

The other stations are all commercial; the format of their programs is similar: rock and roll and pop music. News programs are broadcast at the top of the hour. Maybe it could sound incredible, but the FM stations have the same call letters as the AM stations to which they belong, except Radio Nacional. Throughout the country, the FM commercial stations are paired with one on AM, an AM station grant has the obligation to install one on the FM band with different programs from AM.

Anselmo Roccaforte,
La Plata, ARGENTINA

WRTH 1986

1986 World Radio TV Handbook The 1986 WRTH is now available for prompt shipment. The retail price is \$19.95 in the USA. Until further notice, you may order copies at \$20 each plus \$1 Book Rate shipping and handling regardless of the number of copies. For First Class Mail, enclose \$23 for the first copy and \$21 for each additional copy. Orders, with check or money order payable to **CENTURY PRINT SHOP**, should be mailed to: Century Print Shop, Don Erickson, 6059 Essex St., Riverside, CA 92504-1599. Inquiries welcome at (714) 687-5910. Back copies of WRTH, 1981 through 1985, may be ordered at \$12 ea., 2/\$20, postpaid, mix or match years. California residents, please add 6% sales tax to ALL orders.

EASTERN TV-DX

John F. Combs, prop.
2831 Selma
Jacksonville FL 32205
(904) 387-2367
DEADLINE: 1st

EASTERN TV-DX

February 1986

February 1986 "ALL THE DX THAT'S FIT TO PRINT"
Bob Seybold, Bennett Rd., Dunkirk NY

"Trops continued to this area in October, but less frequent. One really big opening to South and some smaller ones. Do not expect much more this year; maybe some E-skip in December/January."

Particularly Impressive

October 1985

3 Tr "Opened in early evening (1800 EDT) and continued with great intensity all night into AM of the 4th until 1000 EDT or later. I only left the dials about 30 minutes in this opening (no sleep)!" (* see notes)

KARD-14 LA 983	WOOV-20 AL 798	WKSO-29 KY 469	WFYZ-39 TN 583	WCET-48 OH 358
*WPTO-14 OH 349	WDCB-20 OH 264	KTVP-29 AR 906	WJSU-40 AL 703	WAFP-48 AL 661
WKVT-15 MS 868	WDCA-20 DC 270	WKAY-30 TN 586	WHMB-40 IN 400	KYFC-50 MO 834
WTAP-15(OH)246	*WTTQ-21 AL 668	WMKW-30 TN 758	WIIQ-41 AL 841	WSFJ-51 OH 238
WKPC-15(IN)445	WKEF-22 OH 320	WAAV-31 AL 661	WDRB-41(IN)447	WKON-52 KY 397
WNDU-16 IN 359	WVAH-23 WV 312	WLKY-32(IN)445	W41AA WV 185	WZDX-54 AL 661
WPTD-16 OH 320	WPTY-24 TN 755	WKAB-32 AL 796	*WBMG-42 AL 743	WINT-55 TN
WJMT-16 TN 699	WKAS-25 KY 328	WPBO-42 OH 324	WYMT-57 KY 414	WPDS-59 IN 400
WZTV-17 TN 595	WTVK-26 TN 511	*WRGB-34 KY ??	WKOI-43 IN 345	WTSF-61 KY 324
WLEX-18 KY 409	WTJC-26 OH 296	WKHA-35 KY 419	WKCH-43 TN 513	WIII-64 OH 357
WHIZ-18 OH 225	WKYT-27 KY 408	WTVQ-36 KY 408	WRGT-45 OH 320	WLJC-65 KY 409
WDHN-18 AL 844	WVSB-27 MS 800	WKMR-38 KY 367	WKLE-46 KY 414	WKMG-68(IN)445
WKPT-19 TN 444	WTTB-28 OH 247	WBAK-38 IN 478	WSBN-47 VA 424	
WHNT-19 AL 661	WMAA-29 MS 933			

THIS ONE SIZZLES!

June 1985
30 Es 1330 WESH-2 FL 900
1330 WPBT-2 FL 1080

July 1985
2 Es 1145 KJRH-2 OK 675
1200 KXTT-5 TX 1075
1305 WCIX-6 FL 1080
1507 KPRC-2 TX 950
2000 KPRC-2 again...
2000 KENW-3 NM 1070

Strobel, cont.---
July 1985
7 Es 1915 KNMZ-2 NM 1150
2158 KENW-3 NM 1070
2305 KMID-2 TX 1110

8 Es 1200 WPBT-2 FL 1080
1200 WESH-2 FL 850
1300 WEDU-3 FL 900
17 Es 1000 KNMZ-2 NM 1150
1030 KENW-3 NM 1070

July 1985
30 Es 1531 KNMZ-2 NM 1150
1800 KWGN-2 CO 1000

August 1985--"No Es this yr!!"
October 1985
27 Tr 0301 KAIT-8 AR 450

November 1985
18 Tr 0252 WWSB-5 OH 200
0255 WCTV-8 MI 180
0321 WXYZ-7 MI 160

"Since FM-DX was so pitiful the past two summers, I turned to TV-DX and found it very interesting. I have a 19" Quasar color TV. In May 1984 I purchased my first VCR...a year later, a second. It's been fun taping TV IDs, although Es is not easy to tape. When the signal fades, the speed of the VCR changes all by itself, to a slower speed. I finally found it better to tape Es at the slowest speed. Dubbing the IDs off on a second tape works fairly well, although audio can be lost if the signal was not strong enough. Suggestions, anyone?"

"My TV-DX set-up is not good as yet. I do have a rotor on my VHF-TV antenna, but I need a better antenna. Don't know what kind of antenna I have, but it is 50' AG on my tower and does some good...As everyone can see from my report, I have no UHF antenna as yet. Perhaps I will have one installed in time. So far, I've logged mainly Es reception. Doubt that I missed much Es, as I was home most of the time to check. 73, Ralph."

(Welcome to Eastern TV-DX, Ralph! I know that a lot of DXers whose first love is FM still log quite a bit of TV-DX while waiting for the MUF to rise.--jfc)

NOTES on above:-WPTO-14 "rare"

- WTTQ-21 "super-strong all evening til AM s/off, then agn at s/on"
- "WRGB-34" (Bob, these are still Schenectady Ch. 6 calls, no? Is this a newie I don't know about?--jfc)
- WBMG-42 "in all night into AM--never faded out"

"Also lots of translators, too many to list. Many tentatives and unIDeds which will be reported later if found to be definite. This was a real super opening. 800 mile tropo overriding 100-300 mile regulars for hours!"

12 Tr Kentucky U's, Columbus, Dayton, Springfield OH U's; Madison & Chicago U's good; South Bend, Ft. Wayne U's, also KDUB-40 briefly. "Also good to east:" Binghamton, Elmira, New Jersey, Connecticut U's; also WVTM-41, Watertown, Utica, Syracuse, Flattsburgh & others.

19 Tr Toledo U's "super," Lima, Bowling Green, WGGN-52; Michigan U's good; Ft. Wayne U's. "Fair sigs to east:" Elmira, Binghamton, Utica, Watertown, Ontario U's "above average"

"Occasional E-skip in October, channels 2 & 3, no IDs. Some scattering of tropo on few others days, but just run to 400 miles, nothing great. Some indication of 62 Kingston NY being on? (Supposed to have gone on in late October [WTZA]--jfc) No ID but seemed to be above-normal activity on 62 in late October/early November even on bad tropo days. (With their 5000 kw and 1940' AAT, they should be a regular for you, Bob--jfc) That's it for now. Expect lull. (That's OK; you're probably still resting up from the 3rd!--jfc)

Ralph Strobel, 2300 E. McGalliard Rd., Muncie IN 47303

February 1985	June 1985	June 1985
5 Es 1801 XEFM-2 CH 1370	11 Es 1107 KNMZ-2 NM 1150	19 Es 2219 KTVQ-2 MT 1175
1818 KENS-5 TX 1070	13 Es 1200 KPRC-2 TX 950	21 Es 1231 KPRC-2 TX 950
1829 KMID-2 TX 1110	14 Es 1234 KMID-2 TX 1110	2230 KEND2-2 ME 950
May 1985	16 Es 1230 KNMZ-2 NM 1150	22 Es 1230 KMID-2 TX 1110
23 Es 1200 WPBT-2 FL 1080	18 Es 1702 KTVQ-2 MT 1175	1630 CKCK-2 SA 1110
1200 WESH-2 FL 850	1727 CKCK-2 SA 1110	1900 KPRC-2 TX 950
1700 WGBH-2 MA 740	1820 KTWQ-2 WY 1060	23 Es 1200 CBPT-2 PQ 660
24 Es 1413 KWGN-2 CO 1000	1830 CKCK-2 SA 1110	1300 KPRC-2 TX 950
25 Es 2054 KNMZ-2 NM 1150	19 Es 1400 KNOP-2 NE 790	1300 KBTX-3 TX 925
27 Es 1230 KWGN-2 CO 1000	1417 KNMZ-2 NM 1150	1334 KENS-5 TX 1070
1530 CFSS-3 SA 1110	1500 KWGN-2 CO 1000	1922 KNMZ-2 NM 1150
June 1985	1849 KTWQ-2 WY 1060	2000 KENW-3 NM 1070
8 Es 1653 WEDU-3 FL 900	1915 KOTA-3 SD 925	24 Es 1505 KMID-2 TX 1110
1700 WPBT-2 FL 1080	1937 KOUS-4 MT 1140	1530 KIII-3 TX 1125
9 Tr 0530 WCHS-8 WV 240	1957 KTVQ-2 MT 1175	1700 CBHT-3 NS 1100
10 Es 1400 KPRC-2 TX 950	2058 CKCK-2 SA 1110	1730 WLBZ-2 ME 860
1400 KIII-3 TX 1125	2156 CFSS-3 SA 1110	28 Es 1110 KMID-2 TX 1110

(RALPH'S REPORT CONTINUES ON THE NEXT PAGE--)

Scott M. Hood, Dean Jr. College, Franklin MA 02038-1994

From Franklin:	October 1985	November 1985
September 1985	22 Tr 2245 WUSV-45 NY 136	5 Es 2150 MUF Ch. 4
21 Tr 0005 WMAR-2? MD T	2255 WGBS-57 PA 250	15 Es 2100 unID-2
25 Tr 2315 WAVY-10? VA T	2305 WDCA-20? DC T	1220 MUF Ch. 5
2315 WTKR-3? VA T	2310 WPHL-17 PA 250	16 Es 1820+ MUF Ch. 4
26 Tr 0905 WJLA-7 DC 375	2345 WBAL-11 MD 340	1915+ MUF Ch. 2
0905 WHYI-12 (PA) 250	23 Tr 0010 WMAR-2? MD T	18 Tr 2305 WVII-7? ME T
30 Tr 0105 WBAL-11 MD 340	1825 WVII-7? ME T	From Beverly:
October 1985	2220 WRC-4 DC 375	27 Tr 2255 WFSB-3 CT strong
14 Tr 1830 WVII-7? ME T	2255 WJLA-7 DC 375	2310 NYC vs v weak
20 Es 1820 unID-2 (MUF 3)	2320 WMAR-2 MD 340	"This is Beverly--a DXing sewer--remember?"
1925 unID-4	2340 WBAL-11 MD 340	29 Tr 2305 WCBS-2? NY T
22 Es 1725 unID-2 brief	2340 WDVN-9 DC 375	30 Tr 2345 NYC 2,4 v weak
Tr 1820 Philly 3,6,10,12, and 29	2345 WMDT-47? MD T	2345 KYW-3 PA 295
Es 1900 unIDs-2,3	2350 Philly V's 250	December 1985
Tr 2000 WVIA-44 PA 220	24 Tr 1025 WVII-7? ME 223	1 Tr 1035 NYC V's wk in/out
Es 2005 unID-3	1025 WLBZ-2? ME T	1035 WFSB-3 CT strong
Tr 2020 WNEP-16? PA T	1025 WCBB-10 ME 176	1035 KYW-3 PA 295
2205 WOLF-38 PA 220	1755 WVII-7? ME T	1055 WHYY-12 (PA) 295
2240 WLVT-39 PA 235	2250 WCAU-10? PA T	
2245 WDAU-22 PA 220	November 1985	
	5 Es 1755+ MUF Ch. 5	

Note on WVII-7 logging of 10-24: "Ignored the Presidential news conference--showed "Bewitched instead!" (Maybe a comment on "voodoo economics?"--jfc)

"Well! A couple of big tropo days...made for an unexpectedly long report! The Es was generally either too weak or WFSB-3 too strong to ID anything."

"Taking a 2 week trip to HI for Xmas. Wonder what I will "catch" over there--Australia, perhaps?...73's, Scott."

Ed Frye, 317 Hooker Avenue, Poughkeepsie NY 12603-3111

"Following a rather busy November in Los Angeles/San Diego, it's good to be back at the typewriter. Being in San Diego for Thanksgiving was certainly different without the cold, raw weather that usually accompanies Turkey Day in upstate NY."

"WTZA-62 was testing with a colorful ID slide and now broadcasts full-time. W63AA has now moved to Channel 36 (WNYT-13 xltr--jfc). While in L.A., I saw KVEA-52 return to air as a SS language stn. Visited RF Electronics in Anaheim. Expecting to find a warehouse, I discovered that RF is a small storefront in a suburban "strip mall." Very little Wine-gard merchandise is stocked on the premises, so avoid the freeways and use the phone instead! We are relocating to the L.A. area, so DX from here will be gone for awhile. Before long, you'll see me in the Western TV-DX column!"

(We'll miss you here, Ed. Good luck with your move--and savor the CA weather!--jfc)

June 1985			July 1985			September 1985		
1 Es 1930	KTVI-2	MO	19 Tr 0025	W25AA	VA 114	8 Tr 1800	WGM-40	NJ
2 Tr 0845	WUNK-25	NC 244		(Onancock	WHRO-25)	1830	WAKR-23	OH 278
Es 2000-2300	MUF Ch. 5		0637	Harrisburg area		10 Tr 0715	WTV-11, WCTI-12	
5 LS 1900	WPTF-28	NC 251		Hartford 61,30		0845	WUNM-19	NC 270
7 Tr 0627	WUHQ-41? MI	T		NC 16,48 PA	44,39	0845	WHMC-23	SC 380
0627	WIHT-31? MI	T	20 Tr 0730	WLIIG-55	NY	0845	WJPM-33	SC 380
0653	WDHO-24 OH	377	Es 0935+	unIDs-2-5		0926	WAWS-30	FL 653
Es 1930	WPBT-2 FL	900	21 Tr 1830	WFMJ-21	OH 234	0930	WGSE-43? SC	T
1945	Cuba-2?(2 stns)T		22 LS 2100	WOUC-44? OH	T	0937	WTF-17? FL	T
8 Es 0840	KJRH-2? OK	T	27 Es 1805	Cuba-2? T			WMFE-24? FL	T
1010	unID-2 PBS			(MUF Ch. 4)			WOFI-35? FL	T
1020	KXMA-2? ND	T	28 Tr 0715	WSJT-65	NJ 126		WNFT-47? FL	T
1149	unID-2 3/4	cb		"New calls"		26 Tr 0710	W35AB	PA 119
1259	WPBT-2 FL	900		0745	WLS-10? VA T		WPMY-2? NC	T
1800	MUF Ch. 5			2100	WLS-10 VA 226	0717	WMBG-26? ME	T
1830	WPBT-2 FL	900		2340	WLIIG-55 NY		CT U's, Harris-	
1830	Cuba-2 & 3		29 Tr 0100	Norfolk 10,13			burg, Scranton,	
9 Tr 0910	WHRO-15 lcl	qlty		0200	Hartford 30,61		Allentown, WLIIG-	
0910	WUNK-25 NC	244		2320	NJ 23, 52, 58, 65		2340	Long Island LPTVs
2228	WXII-12 NC	263		2340	63(T), 59			
2228	WNRW-45 NC	263		2340	WLIIG-21 NY	0737	NC 42, 36, 48, 58	
10 Tr 0000-0100	NC 11,16,28,	48		2340	WLIIG-55 NY		W64A0? VA	T
LS 2200	WPTF-28 NC	251		30 Es 1900	KGAN-2 IA 750	0755	WNVE-25? NY	T
15 Es 1300	MUF Ch. 4			2030	KSNW-3 KS 1050		WNVE-13 NY	196
2329	unIDs-2			August 1985		0840	Tent. LPTV-33	
17 Tr 0030	WXII-12 NC	263		4 Es 1545+	unID-2		(which?--jfc)	
to	WCTI-12 NC	270		6 Tr 0630	Scranton U's		W41AB xiting	
0250	NC 11,28,36			10 Tr 0140	WLS-10 VA 226	0910	WTV-51, WVPT-51	
21 Es 2300	MUF Ch. 3				WDBJ-7 VA 226	0929	NYC 41,47,68	
22 Tr 0130	NC 11,28				0233	MA 56,58	MA 56,58	T
Es 1000	KJRH-2 OK				0630	WINDS-50? NH	WINDS-50? NH	T
1034	KQTV-2 MO				0900	NJ 50,52,58,65	NJ 50,52,58,65	
2144	KYTV-3 MO	853			0900	W59AT? NY	W59AT? NY	T
23 Es 1145	KJRH-2 OK				2016	WSDC-19 MA	WSDC-19 MA	
1205	KGAN-2 IA	750			11 Tr 0030	WKP-19 TN 332	WKP-19 TN 332	
24 Tr 0715	WVIT-30 CT	283			0140	WJHL-11 TN 332	WJHL-11 TN 332	
0715	WTIC-61 CT	285			0140	WUNE-17? NC	WUNE-17? NC	T
27 Es 1810	Cuba-2					WDEF-12? TN	WDEF-12? TN	T
29 Es 1100	unID-2				0300	(Ø to WWBT)	(Ø to WWBT)	
30 Es 1150	KJRH-2 OK				0345	WPKI-22? KY	WPKI-22? KY	T
1150	unID-2 PBS					(2Ø to WMP)	(2Ø to WMP)	
July 1985					12 Tr 0657	Scranton Us	Scranton Us	
2 Es 1129	WSIL-3 IL	626			0700	WOLF-38 PA 173	WOLF-38 PA 173	
2000	WPBT-2 FL	900			13 Tr 0700	WTV-51 PA	WTV-51 PA	
4 Es 1128	WBRZ-2 LA	950			18 Tr 0700	WVAH-23? WV	WVAH-23? WV	T
8 Es 2000	KUSD-2 SD	1050			24 Tr 0715	WNET-13 NY 196	WNET-13 NY 196	
2000	unIDs-3					0739	WAKR-23 OH 278	
9 Es 0040	KXMA-2? ND	T				0739	Pittsburgh 2,40	
LS 2015	WPCB-40 PA	173			September 1985			
2015	WKPT-40 NC				1 Tr 1230	Cleveland U's	Cleveland U's	
12 LS 2115	WPCB-40 PA	173				1300	WOIO-19 OH 291	
Es 2115	unID-2 PBS					1345	WAKR-23 OH 278	
13 Es 1000	WESH-2? FL	T				1400	WIHT-31 MI T	
14 Es 1810	WEAR-3 (AL)					2000+	OH 23,24,43	
2003	WPBT-2? FL	T			2 Tr 0100	WCTI-12 NC	269	
15 LS 2055	WOIO-19? OH	T			3 Tr 0035	NC 22, OH 23		
					5 Tr 0025	NC 22,40		
					8 Tr 1247	Philly 17,29		

John F. Combs, 2831 Selma, Jacksonville FL 32205 (EST)

The new roof is finally on, but the antenna situation hasn't turned out quite like I expected. First, I decided not to put the dish on the 15' tripod as I was concerned with wind-load on my EL Cheapo rotor. I substituted a 4-bay. I believe it to have almost as much gain as a 5' dish, but not as directional. I managed to walk the tripod/rotor/4-bay combo to an upright position and mount it. Now, my knees shake at the thought of climbing the thing to put up the VHF antenna, and I may just not do so. I may wait until I can get another rotor, then mount the VHF on a chimney. So for now, the 4-bay is at about 33' AG, and I have only bunny ears for VHF. (My loggings appear on the next page-----)

December 1985			Combs, cont.---			December 1985		
22 Tr 2308	WTAT-24	SC 216	31 Tr 0720	WTAT-24	SC 216	31 Tr 0741	WEBA-14	SC 200
29 Tr 2320	WFLX-29	FL 272	0720	WLOL-25	SC 263	0743	WRBT-49	SC 317
2320	WXEL-42	FL 272	0720	WATG-26 (SC)	215	0743	W49AI? FL	T
2320	WTVX-34	FL 234	0720	WRJA-27	SC 261		(CCI SW to WRET)	
2320	WFBS-33	FL 312	0720	WRK-35	SC 267	0743	WMGT-41	GA 202
2320	WHFT-45	FL 313		(barely under WOFL)		0743	WXGA-24	GA 201
2320	WDXL-39	FL 313	0723	WAXA-40? SC	T	0808	WHMC-23	SC 294
2320	WLTV-23	FL 314		(CCI to WTWC)		0815	WIS-10? SC	T
2320	WBEV-26	FL 277	0728	WLTZ-38	GA 240		(NBC-could have been WALB, too)	
31 Tr 0720	WJWJ-16	SC 177	0728	WNEH-38	SC 238	2050	WTAT-24	SC 216
0720	WLTX-19	SC 262						

Mike Bugaj, 69 Sherman Road, Enfield CT 06082 (EDT/EST)

June 1985			July 1985			August 1985		
8 Es 0930	WESH-2	FL 1025	14 Es 1805	WKRG-5	AL 1150	11 Tr 0000	WHMM-32	DC 315
0930	WPBT-2	FL 1190	29 Es 1900	WTMJ-4	WI 785	0000	WCFB-28	MD 290
1630	WPBT-2	FL 1190	1900	KGAN-2	IA 985	0005	WETA-26	DC 315
1740	WTVJ-4	FL 1190	1940	WBBM-2	IL 770	0005	WFTY-50	DC 315
1742	WCIX-6	FL 1220	1955	KCTV-5	MO 1170	13 Tr 1840	WNEP-16	NY 215
11 Tr 2135	WFMZ-69	PA 180	August 1985			2130	WPITZ-5	NY 185
2150	WHYY-12 (PA)	195	4 Tr 0845	WHMM-32	DC 315	14 Tr 2025	CBFT-2	PQ 250
2150	WGAU-10	PA 195	0845	WBFF-45	MD 285	29 Tr 1830	WTVH-5	NY 190
2150	WLVT-39	PA 180	0850	WFTY-50	DC 315	1830	WTKT-9	NY 190
19 Es 2030	WESH-2	FL 1025	0850	WNUV-54	MD 285	1830	WUTR-20	NY 155
22 Es 1955	KARK-4	AR 1185	0850	WETA-26	DC 315		"easily watched thru null in local WTX"	
2000	KBTS-2	AR 1180	0857	WNVC-56	VA 325			
2050	WMC-5	TN 1045	Es 1830	KTVI-4	IA 1205	September 1985		
23 Es 0930	WESH-2	FL 1025	1858	CKPR-2	ON 920	1 Tr 0855	WKBW-7	NY 310
1735	KKJO-2	MO 1165	1900	CHFD-4	ON 920		"Omdr. Tom cartoons for 2 hours"	
1900	KTVI-2	MO 970	9 Tr 2030	W63AS	NY		(Is that Yingling?--jfc)	
24 Es 1830	KTVI-4	IA 1205	2030	WSJT-65	NJ 195	October 1985		
1940	WSMV-4	TN 865	2040	WITF-33	PA 250	23 Tr 1940	WCPB-28	MD 290
July 1985			2055	WNJU-47	NY 115	1940	WBOG-16	MD 290
8 Es 1500	WABG-6	MS 1145		"through Hartford's W47AD"		2105	WTV-51	PA 205
1740	KFSM-5	AR 1250	2100	WBOG-16	MD 290	2115	WFTY-50	DC 315
1913	KHAS-5	NE 1335	2155	WCVX-58	MA 115	2120	WTKK-66	VA 335
12 Es 2200	KTCA-2	MN 1050	2300	W64AD	NY	2130	WNVC-56	VA 325
2205	KSTP-5	MN 1050		(Assume you meant AD as no W64AB--jfc)		2240	unID-15	from SW
2205	WCCO-4	MN 1050	0000	WWSG-57	PA 195		"// SIN to WXTV-41--who??"	
14 Es 1300	WSB-2	GA 855	0000	WBFF-45	MD 285		(Ya got mel--jfc)	
1800	WDIQ-2	AL 1050						



FLORIDA TV PIRATE UPDATE

---I received a letter from John Santosuosso about his logging of pirate TV station "WRAT"-4, which was reported in this column in December. He has this to share: "I am passing your letter along to the operator of WRAT-TV. He was most interested to learn that my logging made it into WTFDA. I think you can understand that I really cannot say too much about this operation. However, the reason I was able to "log" him was that I received an invitation to his broadcast location. This is a flea-power operation, and it is unlikely anyone would have much luck on a tropo opening. Very recently there was a second transmission for a small group of friends, and again I was present. The operator does have some vague plans to improve both antenna and power...that of course might mean some DX possibilities. However, I have no idea when or if this might take place." My thanks to John for his informative letter!

---I also received a letter from a very active Florida SW pirate, WMTV, "South Florida's Best Rock." They indicate on their QSLs that they operate on AM, FM, SW, and TV. To my knowledge, however, only the SW outlet has ever been logged. They claim to operate with minimums of 60 watts on 1610 kHz AM, 100 watts on 96.3 kHz FM, 300 watts on 41 meter SW, and 700 (1) watts on Ch. 3 TV. They say that they may crank these powers up "depending on how brave we are and how much beer we had!" Sounds like a really mature enterprise, hi. I'm not sure to what extent we can accept WMTV's claims; after all, these people claim to have received a telex from Barcelona (yes, Spain) concerning reception of their FM signal!! But they are very active and open on SW, using a private phone line and a Delray Beach P.O. box, so let's keep ears and eyes open. TH-TH-TH-TH-TH-THAT'S ALL FOLKS!! ?3.....JOHN.



QSL CORNER



THOMAS J. YINGLING, JR.
221 PINWOOD ROAD, BALTIMORE, MD 21222-2345
PHONE # 301-282-5649

WESTERN TV-DX

Fred McCormack
Box 5221
State University Sta.
 Fargo, ND 58105

February 1986

Deadline: 3-8-86

This is the shortest column in some time, but some nice DX none the less.

New _____ New Mode _____ Tent. - t Unidentified - unid S/On - + S/Off - =
ID Color Bars - @ - Unid Color Bars - % IHTP - φ Misc. Test Patterns - &

- TV QSL's
- MO KQTV 2 St. Joseph, P. O. Box 247, zip 64506. QSL Card with no signer. Nollman
 - KSDK 5 St. Louis, TV Plaza, 1000 Market St., zip 63101. Letter from Eugene R. Hill, Dir. of Eng. in 1 month. Nollman
 - OK KTVY 4 Oklahoma City, 500 East Britton Rd., zip 73114. Send QSL card, with no signer on old WKY-TV card with KTVY-TV written in. Nollman
 - FL WESH 2 Daytona Beach. Send QSL card, signed by Neil Hunt (?), Chief Engineer. Nollman
 - MO KYTV 3 Springfield, 999 West Sunshine, zip 65807. Letter from Dan woodall, Asst. Chief Engineer in 1 week. who says "Being anavid DXer, I am sure you are aware of how the atmosphere can do some strange and unique things to RF signals." Nollman
 - MS WMAB 2 State College, % P. O. Box 1101, Jackson, MS 39215-1101. Letter from David J. Wilson, Dir. of Eng. & also map of the state etv network. Nollman
 - AR KETS 2 Little Rock % 350 S. Donaghey St., Conway, AR 73032. Letter from Bradford Johnson, Video Technician AETN He says that we too are subject to skip as other ch. 2 station severly interfere with out primary coverage area. WPBT, WMAB & KSAF are often seen after we sign off. Nollman
 - GA WSB 2 Atlanta, 1601 W. Peachtree St. N.E., zip 30309. Letter from Herb Gilbert, Dir. Eng. in 1 month. Nollman
 - FL WUFT 5 Gainesville. QSL Card from Brian Lietz, Dir. of Eng. Nollman
 - IL WBBM 2 Chicago, 630 N. McClurg Court, zip 60611. Send a QSL Card signed by unreadable Dir. of Technical Operations. Nollman
 - FL WPBT 2 Miami, P. O. Box 2, zip 33261-0001. Letter from Graham R. Simmons, Dir. of Eng. Nollman
 - SA CFSS 3 Warmley, % Box 280, 95 E. Broadway, Yorkton, SA, Canada S3N 2V9. Letter from Richard Nierergal, in 3 1/2 monts. Ross
 - DE WDPB 64 Seaford, P. O. Box 864, zip 19973. Letters from Ray A. Fantini, CE in 2 weeks aftrl follow-up. Vogt
 - W61AN 61 Newark % Summit Broadcasting, RD1, Box 394, Summit, DE 19709. Letter from Francis J. Tafelski. This took some detective work! I called WGBB-TV 49 Read Lion, PA to see who hadpermission to translate then. Then called Tafelski Electronics. I called & talked with Mr. Tafelski was a 1 yearmember of our club about 20 years ago (is the club that old?)so he understood what Iwanted. Vogt (you better get them qsl soon, a new station coming on air on same channel in Wilmington, ed.)
 - PA WTVE 51 Reading, 1729 N. 11th St., P. O. Box 3248, zip 19604. Letter from Gitson P. White, Contract Chief Eng. who has programs from "SelectTV" scrambled movie service. Vogt
 - NY WSNL 67 Smithtown, % 3200 Expressway Dr. S., Central Islip, NY 11722. Letter from Norman E. Wright, CE. Vogt
 - SC WJKA 26 Wilmington, 1926 Orleander Dr., P. O. Box 2626, zip 28403. Letters from Larry White, CE in 2 weeks. Vogt
 - NY W59AT 59 Plainview : % Mr. Michael Bogner, 202 Terminal Rd., Westbury : Plainview, NY 11803. Send back my prepard cards after 2nd try. I send photo of there id for report. translators now being use WL16-TV 55 Riverhead, NY. Reply took 3 months in all. Vogt
 - NC WBTY 3 Charlotte, 1 Julian Price Place, zip 28208. Letter from Frank King, Operations Technician in 2 weeks. Nollman

Reporters for this month are Bill Nollman of Fitchville, CT; Robert S. Ross of London, Ont. & Larry Vogt of Springfield, VA. Next month more FM QSL's. Keep on reporting for QSL's in 1986. There lots of tv to QSL!

Pat Dyer, 5315 Silvertip Drive, San Antonio, TX 78228 (WA5IYX) CST

Equipment: 1980 model Penncrest 9" black and white, Archer V-100 and eight bay bow tie UHF array at 20 feet with rotor.

<u>November 1985</u>		14 Es 1701 WDTN 2 OH 1075	15 Es 2229 WTWO 2 IN 935
30 ms 0604:05 KQTV 2 MO 750	Es 0920 unids channel 2	1828 WBBM 2 IL 1045	2240 fade/outs
0929 KWGN 2 CO 810	0959 WCBM 2 SC 1120	1830 fade/outs	20 Es 0009 unid channel 2
1027 3 Cuba	1116 2 Cuba	1950-2020 unids ch 2	0035-0046 unid 2 n,ne?
1128 fade/outs		2031 WPBT 2 FL	1123 t/in unids 2-4
		2044 WESH 2 FL 1055	(MUF 107.9-1141)
		2128 fade/outs	1243 WAVET 3 KY
		2202-2230 unid ch 2	1258 WDTN 2 OH
		(Spotty)	1259 WTWO 2 IN 935
		15 Es 1148-1200 unids 2 nw	1320 fade/outs
<u>December 1985</u>		1222-1315 unids ch 2	22 Es 1820-1830 unids 2,3
12 ms 2333 KETSt 2 AR		(Mexico - CBS)	(Spotty)
13 ms 0623:20 KUSD 2 SD 920		football with Sp	23 Es 1628-1630 unid 2 e,ne?
Es 1325 unids 2 Spanish		narration)	24 Es 1400-1405 unid ch 2 se
1355 TGV t 3 GU		1420-1430 unid 2 w/nw	lull
1411 YSR 2 ES 1200		1817 WCBM 2 SC	1423 unids chs 2, 3
1415 YSU t 4 ES		1922 WFMYt 2 NC	1429 TGV t 3 GU
(MUF 88.8-1427)		1934 WCMHt 4 OH	1440 YSU t 4 ES
1459-1520 unids 2 Mex		1959 WAVE 3 KY 945	1458 YSR 2 ES 1200
ms 2215:40 KGAN 2 IA 945		2100 KTCat 2 MN	(MUF 88.5-1525)
14 ms 0615 KQTV 2 MO 750		2103 WCCOt 4 MN	1530-1800 unids 2-4
0645:40 KSNC 2 KS 615		(MUF 94.5-2114)	(Mexco et al)
0652:17 KNOP 2 NE 820		ms 2201 WDTN 2 OH 1075	lull
Es 1655 WAVET 3 KY		ms 2214 KQTV 2 MO 750	1828-1843 unids 2 Sp
		Es 2228 WSIL 3 IL 810	25 Es 0815-0845 unid 2 Mx se

Even though I got more ID's on the 14th, the Geminid meteor rates seemed high the morning of the 13th. (Local channel 5 was on by 0615 on the 14th).

I was busy with the 10-M ARRL Contest December 13-15, so some ID's were likely missed.

The most intense Es of the month on the 20th started suddenly (i.e., none noted at 1015), but most of the time was spent with the FM band.

Channel 12 has now dropped the all-night "Odyssey" rock videos. Channel 35 from 0030-0130 has Dr. Gene Scott before sign/off.

73, Pat, WA5IYX

William Eckberg, 1032 Sterling Road, Dixon, IL 61021 CST

Equipment: 1966 Zenith b&w tube receiver ch 14N22, modified Zenith 175-1953 detented tuner. Channel Master 1110 VHF antenna. Channel Master 7 foot UHF parabolic antenna with Winegard PA4975 preamplifier on a 40' tower.

<u>December 1985</u>		DX was limited to a midday E skip opening on December	
4 ms 0440 KOUS 4 MT 925	20.		
6 ms 0320 KOUS 4 MT 925			KOUS-4 appears to be on all night. They have an
14 ms 0520 KDFW 4 TX 738			easily identifiable ID slide and are usually logged within
0540 KPRC 2 TX 890			five minutes.
0608 KOUS 4 MT 925			Noted one new ID. WMMT-3, Michigan. The old WKZO-3
20 Es 1225 KPRC 2 TX 890			call has disappeared forever. Not many of the early stations
1235 KIII 3 TX 1072			have retained the same channel and call originally
			granted.

WCIA-3/WCFN-49, before and after the ID change in Springfield showed the same call

William Eckberg (continued) slide. Formerly, it was WCIA-3/W49AA. Now it is WCIA-3/WCFN-49. Have they simply retained ownership and upgraded the Springfield translator to satellite?
 W51AF in La Salle, Illinois has been noted on all night recently. Rare for low power stations and a good DX target.

Nathaniel Ely, 1237 East Johnson St., #2, Madison, WI 53703 (608)-257-5220 CST

Equipment: Quantum 1110, Spartan II VHF preamp (0061) from Chmstr; C.M. 7' dish with 4990 preamp at 61', 70'/30' runs of .412/RG-11 cable, H-D 73 rotor. Winegard DA-405 post amplifier (when locals off the air), 3 Channel Master 7206 "Hi Q" traps (UHF). Tower, QDMX MD-56 (free standing).

November 1985		15 tr 0009	WLKY 32 KY 400	15 Es 2115	WUFTt 5 FL
6 tr 0026	WCAY 30 TN 500	0027	WGRB 34 KY 460	2204	WBRZ 2 LA 880
0147	WLEX 18 KY 430	0031	WDRB 41 KY 400	2206	KPRCt 2 TX
0230	WHAS 11 KY 400	0032	WLEX 18 KY 430	16 Es 2130	KUTV 2 UT 1175
0300	WZTV 17 TN 500	0210	WVAH 23 WV 525	2200	KWGN 2 CO 860
0423	WLWT 5 OH 375	0237	WHAS 11 KY 400	December 1985	
0426	WTVQ 36 KY 430	0439	WKRC 12 OH 375	6 ms 0230	CKND2 2 MB 680
0435	WDRB 41 KY 400	0449	WKYT 27 KY 430	(Shot 7 photos of ID slide before f/out)	
0437	WTWO 2 IN 280	0514	WPBO 42 OH 420	7 ms 0235	CBFT 2 PQ 775
0451	WLKY 32 KY 400	0529	WPBY 33 WV 525	(Phillips TP)	
14 tr 2121	WKON 52 KY 390	Es 2059	WESH 2 FL 1090	10 ms 0214	CKCK2 2 SA 850
2122	WLKE 46 KY 430	2100	WPBTt 2 FL		
2222	WTVQ 36 KY 430	2105	unid ch 2 MX XEW		

Winter landed in Wisconsin early in November. So far, 53 inches of snow have fallen, and it's only January 6th. And too, it has been unusually cold. Could this mean an early DX season? I hope so. Now is the time to kick back and formulate a battle plan for spring.
 New call letters for WFBN in Chicago as of January 5, 1986 are WGBO. 73, Nate

Fred McCormack, 135 Prairiewood Drive, Fargo, ND 58103 CST

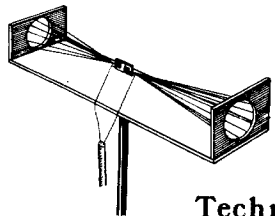
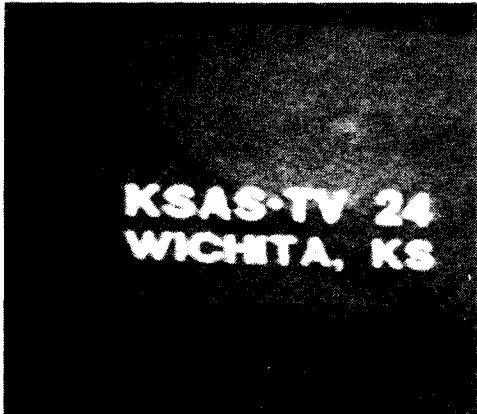
Equipment: VHF: Broadmoor 9" black & white, Winegard CS-4053; UHF: Teknika 6510 tuner, Winegard CH-9095, Blonder-Tongue CMA-Uc pre-amp; Alliance rotor.

January 1986
 7 tr 2200 KNRR 12 ND 149 Pembina, satellite of KVRN-15, Fargo. That's all for now!

PHOTO-NEWS

David J. Nieman
 12264 Nice Road
 Akron, NY 14001
 U.S.A.

We have more DX photos this month from.
 Jim Pizzi - Lovington, NM



Technical Topix

MISCELLANEOUS

Perhaps the reader wonders how a person can write articles on a regular basis for several months and then disappear for several months without a trace? Well, I figured that it is my duty to simulate E-skip conditions for the benefit of those who may not have gotten them on their radios...

Before going any further here, Saul Chernos and others will be interested about some new information from the Government with a capital C. NASA does, indeed, have a form for requesting "Shuttle-skip"! DX'ers should file a form DD-2371 "Request For Ionospheric Disturbance."

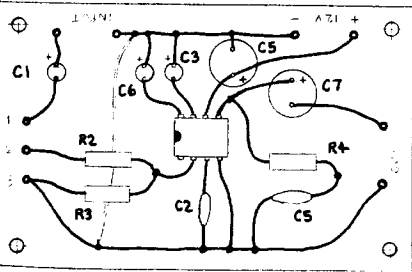
Seriously, on that matter, I have not received any information about the Spacelab 2 ionospheric/plasma experiments yet. (Tech Topix, Sept. '85) As a matter of opinion I would doubt the snagging of any distant stations via reflections off the plasma experiments because they affected so small an area of the ionosphere. More likely would be the chances of reflection off the charged trail left behind by the orbiter itself. Verification of this would require extensive calculation of the locations of the transmitter, your QTH, and the shuttle orbiter.

BOO BOO DEPARTMENT

Now a word about my column on selectivity. (Tech Topix, Apr. '85) I realized (and thanks for reminding me, Joseph Fela, and others!) that I committed a grave error of omission which I will rectify here, if you will permit. Somehow I managed to omit perhaps the most important tuner spec to DX'ers: Adjacent Channel Selectivity. This is the spec that 99% of manufacturers do not publish. It is the spec that Leonard Feldman fails to report in his reviews for *Audio* magazine. And it is the spec that separates the men from the boys, as it were.

As some of you know, adjacent channel selectivity (I'll call it ACS) is the ability to separate stations that are next to each other on the dial (that is, two neighboring channels), while the alternate channel selectivity is the ability to separate stations that are two channels apart. While tuners on the hi-fi market typically exhibit 60dB or better alternate channel selectivity, few can muster up much more than 5 or 10 dB ACS. That, of course, is not that good in an area where the dial is crowded with strong signals. Even here in rural west Tennessee, my Pioneer F-5, with its crummy ACS, has at least eight or ten channels rendered useless for DX'ing at any time due to spillover and confused PLL action.

For the sake of completeness I managed to dig up a few specs (thank to Marty Barvinchak for some of these). For instance, the legendary, discontinued Mac MR-78, considered by some to be the best home tuner evermade, had selectable ACS of 7, 22, and 55 dB. Few manufacturers come close, except for the Onkyo T-9090 FM-only tuner which, at \$600, may be the best news to come along in awhile for FM DX'ers. It sports alternate channel selectivity of 80dB and ACS as much as 50dB. The Carver TX-11 is also capable of great things and gives you 45-50 dB ACS for \$600. Most of the other tuners mentioned in the article came in at 10 dB or less.



Q. XEW-TV comes in on my television sometimes when weather conditions are bad. What city is that station in? — L.E. — Jackson

A. The Federal Communications Commission had no record of such a station and said it must be a ham operator's call letters.

↑ FROM THE JACKSON SUN NEWSPAPER (JACKSON, TN) A FEW SUMMERS AGO.

PROJECT DU JOIR

This month Tech Topix will provide you with something to do during the cold months. Our project for today is a headphone amplifier which can be used to provide the benefits of sound to tuners, tape decks, SCA decoders, etc.

The circuit I have designed is inexpensive, has hi-fidelity sound, is very simple to assemble, and all of its parts can be purchased at Radio Shack. It can be built into a separate cabinet with its own power supply (or an AC wall adapter) and appropriate connectors, or wired into a piece of equipment and powered off same.

The LM386 integrated circuit was made specifically for battery-operated operations in consumer electronics. This means small tape recorders, portable radios, and such. Intended supply voltages range from 4 to 12 VDC and typical supply current is 50mA.

Gain of the 386 is internally set to 20 (26dB). The capacitors on pins 3 and 7 are bypasses to prevent oscillation. R1 and C1 make up a damper which ensures transition oscillation (which would drive an AM radio crazy) does not occur during a negative swing into a low impedance load.

Figure 1 is the circuit and Fig. 2 is the wiring diagram. As in all good audio work, keep the leads short and neat. Keep the bypass caps as close as possible to the IC. Ground all signals to one point, if possible.

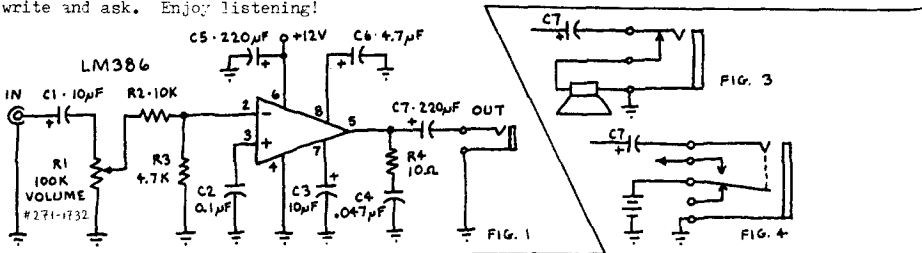
There are several options on the output connection. Figure 3 shows how to wire a closed circuit jack (R.S. #274-251 or 252) to silence a built-in speaker when the headphones are plugged in. Figure 4 shows how to wire the headphone jack to serve as a power switch (R.S. # 274-252 or 277).

Now a comment on level matching. The outputs of stereo tuners and disc players, the "audio output" jacks of TV's and VCR's, and the "tape play" outputs of tape decks all provide a "line-level" signal. This is a medium to high impedance (2k to 100 k ohms typically) ac audio signal of about 500 mV.

In operation, the amplifier is very quiet and has clean response from 40 to 25000Hz. It is possible to add some degree of tone control, if desired or required. To reduce treble response, place a small disc capacitor from pin 2 to ground.

If it is desired to connect the amp to a receiver with no line-level outputs (i.e. a portable radio or communications receiver), one must open up the case and gain access to the terminals on its volume control. Use an ohmmeter to determine which of the three terminals is connected to ground (the chassis, or common) and connect your input wire's shield here.

Good luck...and if you have problems building this (although I can't imagine what), write and ask. Enjoy listening!



NORTHERN FM-DX

Saul Chernos
P.O. Box 292
Paris, Ontario
Canada N3L3G2

FEBRUARY 1986 (work (519) 442-4456 ; home 756-1201 anytime)

I finished typing January Northern last night and already I've got three reports! Some more nice tropo so I'll get an early start on preparing the column this month. Remember, be typed and "ready to print as is" if at all possible.

ERIC PADER - 23-35 Bell Blvd. - Bayside NY 11360

SEPTEMBER 1985

- 25 GW-Tr
1830 WCAG 91.9 NY New York PIRATE distorted signal with heavy metal music
26 Tr
0205 WBJC 91.5 MD Baltimore good, Boston in
0802 WHLM 106.5 PA Bloomsburg o/MD station
0825 WBEY 103.1 MD Grasonville

27 Non-Tr
HURRICANE GLORIA passed thru area around noon; Now I know the true meaning of "cx totally dead"

- 28 GW-Tr
0110 WHCT 91.5 NY Brooklyn PIRATE great sound
30 Tr

0130 WGIK 103.1 NY Bath g "Moral Majority Report" fadeless; extremely rare path

- 0208 Boston MA area; WGIK 103.1 NY stronger
0231 WAEV 97.3 GA SAVANNAH "more music, Wave 97...Nightime Savannah" o/WHP-PA & WMVB-NJ, Taped, my best Tr for distance at 718 miles! (This seems out of place for your other DX; could it have been a long MS burst or freak Es; when I had a KS stn once, on Es, no other trace of Es yet was in 13 minutes with fadey in-out signal; I've had same effect w/ MS for shorter time frames. I believe you had it, but was it really Tropo?-Saul)
0300 WHRB 95.3 MA Cambridge
0307 WFNX 101.7 MA Lynn
2005 WDNH 95.3 PA Honesdale o/WSBH-NY
2200 Good general Tr...NJ, MA
2300 WELV 99.3 NY Ellenville o/WOMP-MA

- OCTOBER 1985
1 Tr
0058 WOKQ 97.5 NH Dover
0100 WHOM 94.9 NH MtWashington 29db signal!
10 Tr
0105 WPFW 89.3 DC Washington
11 GW-Tr
2330 WHOT 91.9 NY Brooklyn PIRATE mentioned drifting because "someone was ironing" and then did drift down to 91.85
2352 WHOT 103.1 NY Brooklyn NOT AN IMAGE of above pirate; see comments below report.

- 12 GW-Tr
0005 WHOT 91.5 NY Brooklyn HERE TOO! In addition to 91.85 & 103.1 (oy-vehl-saul)
0135 WHOT acknowledges being on all 3 freqs!
0610 WACL 103.1 NY New York PIRATE "Columbus Day Block Party" 6dB (THIS 14 GW-Tr coops-s)
0900 General Tr w/widespread heavy fog
17 GW-Tr
2140 WACL 103.1 NY New York PIRATE
23 Tr (one of best NY Tropo Tr in awhile)
0105 WHOM 94.9 NH MtWashington 22dB signal (most lcl alternate-channel stns usually 30)
0110 WCRB 102.5 MA 44dB; WAAF MA 107.3 49dB!
0110 WGNV 107.7 NY Albany 27dB
0119 WFNX 101.7 MA Lynn 30 dB
0123 WPEX 106.5 NY Albany "Pix-106"

- 23 Tr cont'd (Oct)
0130 unID 104.9 MA? weak classical
0133 all MA & RI stns on 94.1, 94.5, 94.1, 93.7, 101.5, 100.7, 103.3...at apparently best levels in years!
0143 WJUL 91.5 MA Lowell s-off 0149
0155 WOMP 91.9 MA Provincetown jazzy
0200 WMLN 91.5 MA Milton s-off taped
0745 still good Tr to north (ALBANY NY) & N.E.
2045 WJFK 94.9 MA WestYarmouth NEW CALLS
2055 WBEY 103.1 MD Grasonville
2200 general Tr to MA & central PA; also MD91.9
2316 WHP 97.3 PA Harrisburg 27dB
2355 WKRZ 98.5 PA Wilkes Barre

- 24 Tr
0010 WHLM 106.5 PA Bloomsburg
26 GW-Tr
0025 WHCT 91.9 NY Brooklyn DJ "Pete Sake" 10dB, terribly accented Brooklynese voice, sounded like an idiot. Mentioned having been on "last week", erroneously anc'd 91.5, "The original fun radio station!"

- NOVEMBER 1985
1 Tr
0110 WDNH 95.3 Honesdale solid, 10dB
7 Tr
1725 mincr coastal Tr to LI & CT
16 GW-Tr
0115 WFUN 91.9 NY New York probably Brooklyn, as dedication played for Bay Ridge. Same stupid-sounding DJ, 13dB in stereo. (Remember WHOT said "fun" radio stn? Bet they're one & the same.-saul)

- 19 Tr
General MD to Boston MA Tr; mild w/patchy fog.
20 Not much Tr
HURRICANE KATE was of surprisingly little help. The 77°F temperatures didn't trigger Tropo either!

BULLETIN FROM EDITOR: I rec'd a letter from a DXer who mistakenly thought I had an ONKYO T-9090. Can you answer his questions and mail to me in your next report; in fact perhaps a few of you could help him out: "I would like info on your ONKYO T-9090. Is it a tuner or a receiver? I am looking for a good tuner for DX purposes. What would you say & that's why your editor calls for more than one answer) is better, the CARVER TX-11 or TANBERG (spelling okay?-s)300A? " The DXer is from Grand Rapids MI to give you an idea of where he is DXing from. I'll forward your replies, and perhaps print up a special "technical" page if the info warrants such a page. PLEASE HELP. Back to Eric.....

ERIC SENT SOME INFO ON NYC PIRATE SCENE WHICH SEEMS INTERESTING ENOUGH, SO HE WILL APPEAR AT THE END OF THIS COLUMN IN A NEW ADDITION TO COLUMN CALLED "NORTHERN FEATURES". turn...

GLAD TO HAVE YOU BACK RALPH!

MARCH 1985
9 Tr
1200 W208AA 89.5 IN Richmond g\$ (42nd 10-watter from educational band; WCDR ID 38
29 Tr
0900 WCFM 99.3 IL Mt Zion b \$ 200
APRIL 1985
6 MS
0008 KTUX 98.9 TX Carthage (see MS report at end of my report) 760
12 Tr
0905 WVBA 89.9 KY Frankfort r \$ 160
14 MS
0100 WBCM 98.9 FL Tallahassee 700
MAY 1985
10 Tr
0235 KZBS 98.9 OK Oklahoma City (prev MS) 750
0353 KZCC 98.9 KS Leavenworth 520
23 Es
1100 WKPX 88.5 FL Sunrise r \$ 1050
1101 WPRK 91.5 FL Winter Park s-on 870
1115 WSWN 93.5 FL Belle Glade 1020
1115 WCYL 93.5 FL Vero Beach news 950
1116 WRMB 89.3 FL Boynton Beach g\$ (prev MS) 910
1120 WCKS 101.1 FL Cocoa Beach r \$ 1035
1126 WTRK 107.9 FL W. Palm Beach k\$ o/WTFPI 1025
1131 WWSF 106.7 FL Ft. Lauderdale b \$ 1055
1133 WKOS 100.3 FL Plantation Key wx 1140
1136 WFIT 89.5 FL Melbourne r \$ 925
27 Tr
1200 WDCL 89.7 KY Somerset cj \$ p 180
30 Tr
1100 WNKU 89.7 KY Highland Heights news 105
JUNE 1985
7 Es
1409 KEXX 93.9 TX Corpus Christi "XPFM" 1125
9 Tr
0001 KZRO 104.3 AR Marshall k \$ 500
0200 WFPC 102.3 IN Petersburg k \$ 175
0206 WCOJ 105.5 OH Conneaut g 250
0315 KKYK 103.7 AR Little Rock r \$ 550
0524 WNU5 107.1 OH Belpre k \$ 200
0620 WHCB 91.5 TN Bristol g \$ 300
10 Es
1708 KSEB 88.1 TX Humble g \$ 925
10 Tr
2114 WJHS 91.5 IN Columbia City r \$ testing 65
11 MS
0049 KTUX 98.9 TX Carthage 760
16 Tr
2300 WDFM 98.1 OH Defiance testing r \$ 70
18 Tr
0100 WKMP 94.3 IN Loogootee (???) r \$ s-off 150
19 MS
0040 WAKX 98.9 MN Duluth 530
23 Es
1005 CBD 91.3 NB StJohn NB wx, into "Sunday Morning" program (new prov. for me) 1025
1008 unID 88.5 mono EE //91.3 (list not here-s) 1008 unID 89.3 " " " (ditto-saul)

JUNE 30 Tr
1005 CBEC 106.3 ON Sarnia CBC EE mono "Sunday Morning" program, 0009 next morning s-off 220
JULY 1985
2 Es
1200 KENW 89.5 NM Portales 1070
1205 KMLW 93.9 TX San Angelo 1100
1221 KSEL 93.7 TX Lubbock 1070
1223 KTKT 88.1 TX Lubbock p \$ 1070
8 Es
1305 WCIE 91.1 FL Lakeland g \$ (prev MS) 905
1307 WMCU 89.7 FL Miami wx g \$ 1080
1312 WDZD 93.5 NC Shallotte k \$ 600
1314 WPCV 97.5 FL Winter Haven k\$ 920
1322 WSWN 93.5 FL Belle Glade 1020
1328 WRIT 92.7 FL Stuart m \$ 1000
9 Tr
0129 WPHN 90.5 MI Gaylord g \$ 320
11 MS
0227 CIZL 98.9 SA Regina 1110
16 Tr
2344 WBIU 88.9 IL Charleston reggae \$ 180
19 Tr
0255 WCTL 106.3 PA Union City g mono 290
0500 CJRT 91.1 ON Toronto s-on 375
23 MS
0202 CHIK 98.9 PQ Quebec City (PQ new) 825
26 MS
0437 CJYC 98.9 NB StJohn 1025
27 MS
0152 KTUX 98.9 TX Carthage 760
0433 KZBS 98.9 OK OKC 750
28 MS
0020 KZCC 98.9 KS Leavenworth 520
0300 KZCC 98.9 KS Leavenworth 520
0400 KTUX 98.9 TX Carthage 760
30 MS
0036 KZBS 98.9 OK OKC 750
0155 WUSL 98.9 PA Philadelphia 530
0343 WUSL 98.9 PA Philadelphia 530
2357 WNIU 89.5 IL DeKalb 235
AUGUST 1985
1 MS
2329 WAKX 98.9 MN Duluth 530
2 MS
0152 KZCC 98.9 KS Leavenworth 520
0351 WUSL 98.9 PA Philadelphia 530
5 MS
0005 CIZL 98.9 SA Regina 1110
0141 KTUX 98.9 TX Carthage 760
8 MS
0006 WUSL 98.9 PA Philadelphia 530
0045 CHIK 98.9 PQ Quebec 825
11 MS
0140 WAKX 98.9 MN Duluth 530
11 Tr
0300 KZEN 100.3 NE Central City Lincoln & Ord k\$ 690
12 Tr
0100 KSJN 91.1 MN StPaul c \$ 520
0200 WOI 90.1 IA Ames-Des Moines c \$ 460
0230 KWWR 95.7 MO Mexico wx k \$ 375
13 MS
0101 WAKX 98.9 MN Duluth 530
15 MS
0024 WJML 98.9 MI Petoskey 320
18 MS
0504 KVIL 103.7 TX Dallas (prev Tr & Es) 850
21 Tr
0254 KKYK 103.7 AR Little Rock r \$ (TURN) 550

AUG 24 1985 MS
0202 WQNT 103.7 NJ Atlantic City 570
SEPT 1985
2 Tr
0200 KZPC 98.9 KS Leavenworth r \$ 520
0200 KZEN 100.3 NE Central City k \$ 690
0311 WHAJ 104.5 WV Bluefield r \$ 310
3 Tr
0430 WFIU 91.1 MI Flint c \$ s-on 200
0605 WGGY 106.3 IL Gibson City wx ID 175
5 MS
0353 KVIL 103.7 TX Dallas 850
OCT 1985
14 MS
0116 WCLZ 98.9 ME Brunswick 825
25 MS
0201 KKMG 98.9 CO Pueblo 1036
0224 KZBS 98.9 OK Oklahoma City 750
METEOR SCATTER DETAILS (1985):
APR 6 KTUX "9900 hits in a row from TUX99. The wait for something better is now over on ...Radio, TUX99"
APR 14 WBCM "WBCM Tallahassee FM 99"
JUN 11 KTUX "4 for a dollar, 4 for a \$. If you long for a Tux99 sticker for your very own, well, your time has come!"
JUN 19 WAKX "This morning in the twin ports, 51..."
JUN 30 KZBS "...ZBS. Well, the..."
JUL 11 CIZL "...blazers, Regina's premiere entertainment showcase"
JUL 23 CHIK "...Quebec..." FF female
JUL 26 CJYC "...at 25-23. Tonight Toronto is in Hamilton. I'm Lester Pierce, CJ..." (Canadian Football lg-sc)
JUL 27 KTUX "at Tux 99"
KZBS "...KZ..."
JUL 28 KZCC "Sunday morning on Z7-..." ALSO "...Z7-9..."
KTUX "Tux 99, KTUX"
doesn't bother me) (the only static I get nowadays is static cling from doing my laundry; haven't tried MS lately-sc) All the DX reported here has been taped. Let's hope 1986 will bring better reception than the past couple of years. 73, Ralph.

FRED NORDQUIST - 7945 Boxford Rd - Clay NY 13041

(I haven't any VUDs here & I don't remember typing your DX so I agree the post may have lost it-saul) EQUIP: Heathkit AJ-15; Channel Master Stereo Probe 9 w/CDR rotor, height 35' AGL.

DEC 28 1984 Tr-GW
1945 WJFZ 88.9 NY Syracuse r NSP "Z89" (NSP means never off; why were they 88.9? -saul) 16
APRIL 1985 (now on 89.1)
12 GW-Tr
1659 WSLU 89.5 NY Canton NPR "Voice of the North Country" 100
13 Tr
2002 WRKZ 106.7 PA Hershey k "Z-107" 210
MAY 1985
10 Es (to S.W. at 1729-1746)
1730 KQTZ 105.9 Ok Hobart "KQ-106" 1340
JUNE 1985
2 Es (to South, 1910-2010)
1910 92.9 GA WACAC Valdosta r "C-93" 937
1916 WSSB 90.3 SC Orangeburg lcl wx 713
7 MS
0732 WLL 90.9 IL Urbana ID (prev by Tr) 645
8 Tr
1026 WAIJ 90.3 MD Grantsville g "Keep alive radio" 285

METEOR SCATTER DETAILS cont'd
JUL 30 KZBS "Listen for it at KZBS"
WUSL "Downtown Philadelphia..." & "Power 99 FM, check here on your radio"
WNIU "Here at WNIU-FM"
AUG 1 WAKX "About 11:29 now at 99-wax, and for wx information whenever you need it, just dial..."
AUG 2 KZCC "Z799"
WUSL "Power 99 FM Community service dept reminds you that poetry performers..."
AUG 5 CIZL "August the 26th, presented by Zed99, the heart of rock & roll; & now..."
KTUX "Tux 99" (SID)
AUG 8 WUSL "Power-99-FM, Philadelphia"
CHIK "Quatre-vingt-dix-neuf, Québec" FF male translates as "99 Quebec"
AUG 11 WAKX "419 West Michigan St., Duluth MN, 5...."
AUG 13 WAKX "99 Wax is WAKX Duluth"
AUG 15 WJML "JML, Northern MI's best..."
AUG 18 KVIL "Old Bandido himself, Mariano of Mariano's Restaurant in Marguarette. Sunday mornings on KVIL, followed by... weekend show, in the rest of the most successful."
AUG 24 WJML "Show Road, Linwood" (tentative)
SEP 5 KVIL "...KV..."
OCT 14 WCLZ "...CLZ..." 17th MS on 98.9! (Wow!-saul)
OCT 25 KKMG "Magic 99"
KZBS "KZBS, twenty-four past two O'clock"

NOTES & COMMENTS:

I've finally decided to count 88.1, 88.5, & 96.9 in PEI & NB. After hearing these stations almost yearly, I heard them this year on-the-hour with no IDs. Since others have counted them, I've decided to do the same. Do you know what CBC EE stations are on 88.5 & 89.3? They were // to 91.3 w/ wx for NB. (88.5 could be Gaspé PQ in EE or FF Moncton, 89.3 in EE I dunno...my lists aren't here in Paris-sc) The FM band is becoming even more crowded here, making DX more complicated. As you can see I'm a MS freak. I did have some good luck in logging a few new stns by MS. When nothing else is coming in, one may as well try for a MS burst. (Static

JUNE 8 Tr cont'd

1800 WJFM 90.9 WV Morgantown "WV Pub.R." 312
2002 WRHR 90.5 NY Henrietta Rochester Red Wings baseball, s-off says 2500 watts (Groundwv) 75
JULY 30 Es (to SW 2027-2044)
2027 KEXX 94.1 TX Fort Worth SS 1350
SEPT 1985
1 Tr
2127 WTCM 103.5 MI Traverse City k 485
2130 WTHM 90.5 MI Charlevoix g talk prgm 477
(This is WPHN in GAYLORD MI per latest FM ATLAS and many of my own loggings; they pack out a really strong signal and are in fact gospel-s)
2215 CKAT 101.9 ON North Bay k SID 274
2229 WCMU 91.7 MI Alpena "CMU Publ.R." 386
2234 WCMU 89.5 MI MtPleasant // above 435
2244 WKHQ 105.9 MI Charlevoix r "KHQ" 477
2254 WKPX 106.7 MI Gaylord r "KPK" ???
(I inserted Gaylord instead of Traverse City, they are ex-WJRM, and in Gaylord MI; WRHR is in Henrietta not Rochester) - turn page folks-

SEPT 2 1985
 0108 CBSM 89.5 ON Sault Ste, Marie wx, CBC
 Northern CN, s-off w/ AK & FM freqs named
 & GSTQ (not O'Canada?)
 0112 CBE 89.9 ON Windsor CBC Stereo r //
 94.1 CBL Toronto ON
 0129 unID 88.1 to WEST w/ weird sound effects
 in stereo after jazz (CKLN Toronto ?????-sc)

NOV 16 GW (Tr)
 1006 WGCC 90.7 NY Batavia 100
 1023 WUNY 89.5 NY Utica classical mx 40
 Only 15 new loggings this period. Several Es
 openings were missed week of JULY 7-14 when
 I was camping on the lee of Lake Ontario. A
 rice Tropo session was noted SEPT 1-2 into upp-
 er MICHIGAN. 73, Fred.

INTERIM NOTES WHILE WAITING FOR REPORTS.....

Waldo Bishop: I'd like to thank you for the letter solving WKGC; I knew it was them, I was just unsure of the calls and did not want to print wrong info in my report. So thanks! I sent your letter to Dave; he's told me before that that address will work, so no problems.
 Dave Nieman: Dave sent a bandscan to be used later, and adds... "No tropo or skip here.", so I guess things are dead in Western NY; it's even worse here in Paris!
 Chris Hanley: Got your package; I'll be glad to save radio station promo items if you'll keep an eye out for political campaign buttons.
 STILL NO REPORTS (well, it's only been three-and-a-half minutes) so on to the very first...

** NORTHERN FEATURES **

ERIC PADER'S PIRATE REPORT or SHOW AND TELL IN NEW YORK AND WALK THE PLANK:

WHOT 91.5 (more or less) Their first show was OCT 2 1980; I first heard them in JUNE/83. They've been on pretty much every other weekend since. Announcers are now "Jim Nasium" and "Pete Sake". Their "star", "Hank Hayes", moved to Detroit this past summer & is no longer on except by phone, occasionally. All oldies & phone calls; "Hot 91 1/2" slogan. Has been heard, on occasion, on 91.7, 91.85, 91.9, and 103.1. (re OCT 11 this report...see page one this VUD column...at 0005 WHOT began IDing as "WHOT network" announced they were moving down to 91.5 "in some areas"; they were heard on 91.5 here with a weak, distorted signal; but still local-like on 91.85 (WHOT generally does NOT drift, this is the first time they've not been squarely on a frequency.) The 91.85 was a really sloppy signal - audible from 91.65 through 92.05 or my Technics (ie, not as selective) receiver. The 91.5 was definitely separate signal. IDed as "WHOT 91 1/2 and 103-1".
 KSUN 91.5 First heard 1982; logged several times that year but not since. "K-SUN" and "Pirate Radio 91.5"
 KPRC 91.5 First heard JULY 15-84 on FM; previously AM; "Pirate Radio Central" Not heard since Oct 14-84. (KSUN became KPRC - saul)
 NINE-FM 91.9 Also called "Stereo-Nine-FM". First heard JUNE-79 with DJs Ted Harris and "TJ the DJ". Active in 1979-1980 (AUG), (when I moved to PHILADELPHIA to go to school). Count on these guys being on (I don't think they are anymore-saul) with talk any time there's something political going on (election, Reagan jokes about bombing Russia, Korean planes shot down, or July 3-4). Their self-proclaimed last "regular" broadcast was Oct 5-84, but they WERE on Sept 21-85. A recent DJ is Edwin Armstrong; has been noted in past on 91.85, 91.95, and 92.1.
 WCAG or WCHE Hardcore and heavy-metal rock, see this column in Nov '85 VUD 91.9
 WFUL top 40 & oldies, see this issue's report. (91.9?-saul)
 WACL 103.1 hard rock (not hard core rock) w/ some metal. DJs Rich Michaelson, Jimmy Jay. On fairly frequently; first heard by me AUG 2 1985. See Nov '85 NORTHERN FM DX.

Thank, Eric. They are fun to listen to. Your editor has no DX to report as of now and is going to wait until Dec 31 before sending this to print, so MAYBE more reports below.....

PHOTO-NEWS continued



SOUTHERN FM DX

Eric Bueneman
 c/o KCFV 89.5 FM
 3400 Pershall rd.
 Ferguson, MO 63135

report to this column if you are from: AL, AR, CA, CO, DC, DE, FL, GA, MS, KY, LA, MD, MO, NC, NM, NV, OK, SC, TN, TX, UT, Va&W

Request line numbers (if you hear us via Es): (314)595-4472/524-8311

Since there is no mail at KCFV during the holidays, sFw will present a special edition on the St. Louis FM scene. Our logs will return next month. Before we go to the special edition, a couple of notes: wTrC-95.5 Elsau, IL, an r outlet operated by Christian Science's Principia College is off the air, and has been since about November 15, 1985. Also wBIL-88.7 Edwardsville, IL is off, probably to add the 41 kw vertical polarization. KUMR-88.5 Molla, MO comes in good in wBIL's absence.

SPECIAL EDITION: St. Louis FM

In big cities such as St. Louis, in whose shadow I live in, rock music stations are the biggest part of FM radio here. There is only one Album-oriented rock station in St. Louis, that is KSNB (94.7). The popularity of Top 40 is widespread, mostly concentrated on AnTr (103.3), with KWA (106.5) mixing that in with recent hits. Adult Contemporary is possibly the type of r that grabs the lion's share of St. Louis radio listeners and stations. KSD (93.7), KADI (96.3), KYKY (98.1) and WUNY (101.1) all have one sort or another of this format. KADI sometimes leans more toward CHR, while WUNY plays jazz at night. Other rockers audible in St. Louis are WSMI (106.1, Litchfield, IL) and WGEL (Greenville, IL, 101.7 (Metro East)).

Country, a staple in most Midwestern towns, had been the domain of WIL (92.3) until WKKX (104.1, ex-WJEM) hit the airwaves in October of 1985. WKKX started out with a bang by playing 2,104 (count them, two thousand, one hundred and four) country favorites in a row. Then, they started playing ten in a row every hour. WIL started claiming ten in a row, but, in listening to WIL, I have heard, at most, three in a row. Other country stations audible in St. Louis are KTJJ (Farmington, MO, 98.5), ASGM (Ste. Genevieve, MO, 105.7) and KLPW (Union, MO, 101.7 (metro west)).

Easy listening has been the domain of KEZK (102.5) since 1980 when the old KCFM became KSD. But now, KLTH (97.1, ex-KCFM) is going after KEZK's audience with a "light music" format. Easy listening, also known as "doctor's office music", "grocery store music" and most commonly "beautiful music", has been on a decline in recent years due to a glut of stations programming the format, similar to what happened to AOR in the early 1980s. "Light music" seems to be the easy listening wave of the future, as an alternative to "beautiful music". By listening to KLTH, it seems to remind me of the old KMOX-FM (now KHTr). "Beautiful music" will stay around for years to come, with new variations coming off the drawing board. Another type of "easy listening" is classical music. Only KFUC (99.1) programs this type of music. Nowadays, classical music is a public radio mainstay.

Religion, another staple in Midwestern towns, is available on only one FM station. That's WCBW (104.9). When they are not running religious programming, WCBW goes toward the excitement of Christian rock. If that doesn't suit you, you can get that on WIBI (Carlinville, IL, 91.1), religious programming is more suited to AM than to FM, but FM draws the higher Arbitron rating.

St. Louis has been without an ethnic FM station since 1980 when KSCF (now KLTH) became KCFM with a nostalgia format. Double helix, a non-profit group, ran ethnic station KDMA until they sold the station to a commercial operator in the mid 1970s (the station is now KZZK). The non-profit group had applied for and was granted 88.1, but that could run into a challenge from the St. Louis Community College in the near future.

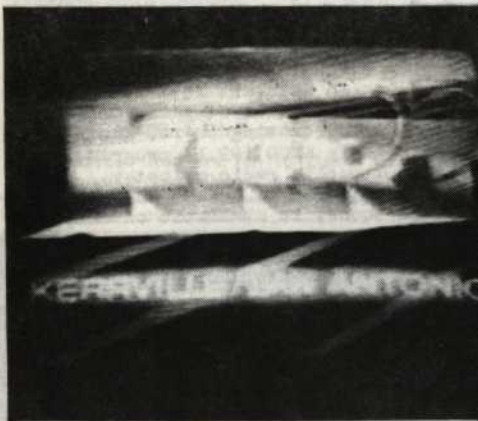
The growth of college and high school radio in the 1980s has turned some heads in the marketplace. Big college stations run NFM programming, like WSIE (88.7) and KWMU (90.7). Others have music formats, like KCFV (89.5, STL Community College, rp), KCLC (89.1, Lindenwood College, j), WLGA (89.9, L&C Community College, r), KWLX (90.3, Washington University, cp) and now-silent WTPC (95.5, Principia College, pr). High school stations program various formats. The most powerful of which is KSLH (91.5), a talk-oriented station run by the St. Louis Public Schools. Most high-school stations run low power, like Aitenour High School's KASh (90.1, p format) and Cahokia High School's WATE (89.5, m format). Non-commercial operators like Hyde Park Association's KBDY (89.9, j) and the Young Men's Christian Association's KYMC (89.7, rp). Some stations use one frequency during the summer and another station uses it during the winter. One example is 89.9, where KBDY uses it in the summer and WLGA uses it in the winter.

What would be a big city without a soul station? St. Louis has an abundance of those stations, with WZEN (100.3) and KMJM (107.7) running the format. WZEN tends to play a soul classic from the 1960s and 1970s on occasion, while KMJM goes more towards current soul hits. There is a rumor that KMJM is going AOR, one thing I hope will never happen.

St. Louis FM has changed considerably since KFUC signed on 99.1 in the early 1950s or so. Now, AM is facing the same changes as FM did in the early 1970s, so by 1990 or so, FM and AM would be equal. I think that FM is the wave of the future, but with all the negative comments made about AM, it could lose some punch as we race toward the twenty-first century. St. Louis FM will also change with time (and the Arbitrons).

Also noteworthy: If you hear KCFV on strong tropo or Es, send the report to SFM, and I'll get my boss, Ted Faas, to verify it for you. El editor's 9:00-10:00 am Wednesday airshift has been dropped to give others a chance, but I'll be gracing the airwaves again very soon. If you would like an aircheck of my first KCFV airshift, send me a 60-minute cassette along with \$1.00 for postage and handling, I'll get it dubbed and sent to you. Joe Sonderman, former KCFV PD, has taken up residence at KHTX. Buzz Carlson has become the new co-host of KCFV's Solid Gold Sunday. Until next month, sayonara from new Music 89.

PHOTO-NEWS continued



KRRT-35
Kerrville, TX
330 mile tropo
seen Nov. 29, 1985

73 and Good DX,

Eric Bueneman
Eric Bueneman (E.B. Stevenson)
Your rockin' SFM Editor

photo
one page
KTIN-21
Ft. Dodge, IA
824 mile tropo
30 seen Sept. 7, 1985

photo
two page
KSAS-24
Wichita, KS
456 mile tropo
30 seen Sept. 7, 1985

photo
three page
KIDY-6
San Angelo, TX
210 mile tropo
36 seen Oct. 8, 1985

photo
four page
XHGW-2
Cuerrero Negro, BCS
743 mile E-skip
36 seen Nov. 8, 1985

WTFDA CLUB SUPPLIES



VHF-UHF DIGEST BACK ISSUES
JANUARY 1982 TO PRESENT \$1.25
A FEW EARLIER EDITIONS \$1.00

NEW QSL REPORT FORMS
FOR REQUESTING QSLs FROM FM
or TV STATIONS (blk & yel)
50 for \$2.00

UHF TRANSLATOR-LOW POWER TV
LIST
A COMPLETE LISTING OF UHF
TRANSLATORS AND LPTV STATIONS
IN THE CONTINENTAL U.S.A. AS
COMPILED BY TELEVISION NEWS
EDITOR BILL FAHBER. THIS
1985 EDITION IS AVAILABLE AT
\$6.95

SEPT. 1980 VUD HI-LITES
MAILBOX: co-channel beats
PHOTO-NEWS: ES catches
PCC FM NEWS: SCA in N.Y.C.
EASTERN TV-DX: best tr ever
WESTERN TV-DX: high band ES
NORTHERN FM-DX: "80" best yet
SOUTHERN FM-DX: July 17 ES
FM-TV STATISTICS: 1980
TECH. TOPIC: dub'l duty ant.

SEND YOUR ORDER TO:

WORLDWIDE TV-FM DX ASSOCIATION - POST OFFICE BOX 514 - BUFFALO, NEW YORK 14205-0514 U.S.A. USE CHECK OR MONEY ORDER (U.S. FUNDS ONLY)

AVAILABLE
***ONLY ONE COPY LEFT!!!**



THE FOLLOWING ITEM CAN BE ORDERED DIRECTLY FROM THE SUPPLIER

FM ATLAS AND STATION DIRECTORY (9th edition)	THE ONE EVERYONE HAS TO HAVE FOR SUCCESSFUL FM DXING. THIS IS THE SINGLE MOST COMPLETE SOURCE OF INFO ON THE FM BROADCAST BAND.	\$8.75
ORDER DIRECT FROM FM ATLAS--ADOLPH, MINNESOTA 55701 U.S.A.		ppd