



# EASTERN TV-DX

John F. Combs  
1308 Willow Branch #24  
Jacksonville FL 32205  
(904) 389-2451

APR 1988

STATES STATS (CONTINUED)

FM STATISTICS

PRCV	#-DXER	#-DXER	STATE	#-DXER	#-DXER	STATE	#-DXER	#-DXER	STATE	#-DXER	#-DXER	ENTRY	#-DXER	#-DXER
AB	24-JEb2	19-JEb2	AGU	1-JP1	0-None	STD	9-JP1	2-TMc	PUE	5-PDy	4-TMc	CUBA	3-JFe	2-MBU
BC	20-JEb2	8-JEb2	BCN	1-PDy	10-FMc2	HSD	1-JP1	0-None	SIN	2-JEb2	0-None	BELTZ	2-PDy	1-JP1
NB	15-FMc	13-FMc2	BOS	1-PDy	0-None	JPL	12-TMc	10-PDy	SJP	2-TMc	0-None	BERMU	2-FMc	2-DN1
MB	5-RSt	3-FMc	CRK	1-JP1	0-None	MEX	1-JP1	1-PDy	SON	3-JEb2	1-DBU	EL SA	2-PDy	1-KS1
VF	13-FMc	12-JFe	DNC	6-JP1	5-FMc	MIC	3-JP1	1-PDy	FAB	2-TMc	1-JP1	BUATE	5-PDy	4-KS1
NS	8-SCh	8-JFe	COA	6-JP1	5-PDy	MOR	4-PDy	3-JP1	TAM	6-PDy	5-MS1	HONDU	2-KS1	1-PDy
ON	92-DN1	68-SCh	DF	21-TMc	21-JP1	NL	14-PDy	4-JEb	VCZ	9-JP1	5-TMc	JAMA1	3-JP1	2-MS1
PE	2-JFe	2-RSt	DUR	1-PDy	0-None	OAX	1-JP1	1-PDy	YUC	2-JP1	2-PDy	PUERT	4-KS1	1-DN1
QD	22-Wh1	22-FMc	GRD	5-PDy	1-JP1							D. REP	1-KS1	0-NONE
SK	8-FMc	7-Wh2												
NWT	1-Wh2	1-JEb2												

KEY TO DXER INITIALS/LOCATION

JAY	Jim Ayers	Tn	Murfreesboro
DBr	Dave Brunfield	IN	Nuncie
MBU	Mike Bugaj	CT	Enfield
DBu	Danny Buntin	OK	Stillwater
SCh	Saul Chernos	ON	Burnt River
JEB2	John Ebeling	MN	Prosit
JEB	John Ebeling	MN	Bloomington
BE12	Bruce Elving	MI	Duluth
JFe	Joseph Fela	NJ	S Plainfield
Wh1	Wh Heppburn	ON	Corrwall

Wh2	Wh Heppburn	NT	Coral Harbor
Jeb2	John Jefferson	CA	Pleasanton
Jeb2	John Jefferson	AK	Anchorage
FMc2	Fred McCormack	ND	Fargo
FMc	Fred McCormack	ND	Des Lacs
FMc	Tia McVey	TX	Bolivar
FMc	Frank Merrill	MI	Milan
DN1	David Nieman	NY	Akron
FMc	Fred Nordquist	NY	Clay
DB1	David O'Dell	AR	Little Rock
DB1	Daniel Getting	PA	Broomall
JP1	Jim Pizzi	MI	Lovington
JP1	Jim Pizzi	CA	Orcutt
RSa	Rick Sanford	TX	Burnett

RSa	Bob Schweitzer	NJ	Brunswick
RS12	R. Steinberger	MA	Hudson
RSt	Ralph Strobel	IN	Nuncie
Stw	Steve West	PA	Havertown
Pdy	Pat Dyer	TX	San Antonio
VEn	Vernon Eaton	AR	Benton
Gya	Gus Mancuso	MD	Cheverly
Ala	Alan Michalek	MA	Springfield
RSw	Bob Spelarek	NJ	Oldwick
Lye	Larry Meade	IL	Chicago
MS1	Matt Sittell	TN	Kingsport

Thanks to Pat Dyer, John Ebeling, Ralph Strobel, Joseph Fela, John Ebeling, Alan Michalek, Larry Meade, Gus Mancuso, and Matt Sittell for their FM Scoreboard/States Stats/FM Distance record updates. It looks like many achieved big jumps in their totals this past season. Here are new FM Distance record updates to the Sept 87 VUD issue: 96.1 ES KEZF ID Idaho Falls 1633 mi. Matt Sittell TN 96.9 MS WINK FL Ft Myers 959 mi. Ralph Strobel IN

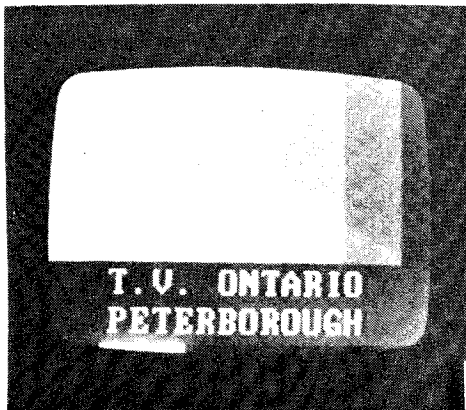
## PHOTO-NEWS

Column layout by:  
David J. Nieman  
12284 Nice Road  
Akron, New York  
14001-9529

MARCH

1988

This month's contributor is: me! myself, I; with a foto of another T.V. Ontario repeater.



T.V. ONTARIO  
PETERBOROUGH

CICO -18  
Peterborough, ON  
91 mile ground wave  
seen Sept. 22, 1987  
at 0038 ESTime

4

DAVE

Don't leave home without it.

Price higher in Alaska, Hawaii,  
Puerto Rico and Virgin Islands.

WINTER DX DOLDRUMS IN FULL SWING...

REPORTS FROM TV-DXers IN AL, CT, DC, DE, FL, GA, IN, KY, MA, MD, ME, MI, NC, NH, NJ, NY, OH, PA, RI, SC, TN, VA, VT, WV, Quebec, Ontario & the Maritimes

APRIL 1988

DEADLINE: 1st of each month

Roy Barstow, POB 488-T, Teaticket MA 02536

DECEMBER 1987	JANUARY 1988	JANUARY 1988
21 Es 1945 WBRZ-2 LA 1370	12 Tr 1945 WMDT-47 MD 340	17 Tr 1800 WHRO-15 VA 440
2045 WEDU-3 FL 1170	1950 WGBS-57 PA 260	- WBOC-16 (DE) 340
2052 WPBT-2 FL 1215	2000 WMPY-22 MD 360	- W17AG NY 190
2115 WESH-2 FL 1030	2000 WCPB-28 MD 340	- WNJS-23 NJ 260
2130 UnID-4 FL	2000 WBOC-16 (DE) 340	- WYAH-27 VA 450
22 Es 1900-1915 No ID's	2032 WNUV-54 MD 350	to WCPB-28 MD 340
23 Es 2000 KLNE-3 NE 1500	2035 WBFF-45 MD 350	- WMGW-40 NJ 285
2000 WREG-3 TN 1130	2035 WOLF-38 PA 270	- WMDT-47 MD 340
2200 KTVO-3 MO 1130	13 Tr 0010 WVIA-44 PA 270	- WGOAI NY 190
2220 KMOV-4 MO 1050	0017 WBRE-28 PA 260	- WTGI-61 (NJ) 280
2230 KYTV-3 MO 1240	0100 WNEP-16 PA 270	2400 WDPB-64 DE 330
2230 KTVI-2 MO 1050	0100 WYOU-22 PA 270	FEBRUARY 1988
Es up to channel 6...	16 Tr 1315 WVIA-44 PA 270	2 Tr 1415 WYOU-22 PA 270
JANUARY 1988	1315 WOLF-38 PA 270	1415 WOLF-38 PA 270
12 Tr 0100 W19AH MA 60	1315 WBRE-28 PA 270	1415 WBRE-28 PA 270
1230 WTAF-29 PA 260	2005 WHRO-15 VA 440	2200 WTAF-29 PA 260
1300 WHRO-15 VA 440	17 Tr 0115 WMGW-40 NJ 285	(See note...)
1940 WYAH-27 VA 450	0130 unID-12 shopping	17 Tr 2245 WGBS-57 PA 260
1940 WTVZ-33 VA 440	(HBN) tel. 1-800-356-????-maybe LPTV??	2255 WMGW-40 NJ 285
1945 WTGI-61 (NJ) 280		2300 WCPB-28 MD 340

Note: odd conditions (on 2-21--rain all day, then snow at night...semi-locals struggling to get in, no NYC stns in, yet PA in! Nice to see some coastal tropes in mid-winter...73.

Scott M. Hood, 7 Auburn Rd., Beverly MA 01915-2501

NOVEMBER 1987	DECEMBER 1987	JANUARY 1988
28 Tr 1730-NYC V's 206	From NEW PORT RICHEY FL:	Back in Beverly:
2230 KYW-3 PA 285	(18th-29th) Dead quiet until	12 Tr 2210 NYC V's 206
2235 WYOU-22 ? PA T	28th--poor antenna, too!	2215 KYW-3 PA 285
29 Tr 0045 NYC 4,5,6,8 206	28 Tr 2245 WMBB-13 FL 209	2215 WCAU-10 PA 285
0105 WTAF-29 PA 285	2315 WDGH-28 FL 217	13 Tr 0020 WHYY-12 (PA) 285
0105 WPHL-17 PA 285	2315 WVGA-44 GA 207	14 Es 1915 WHYY ch. 2
0115 WCAU-10 PA 285	2315 WTWC-40 FL 186	?? 2045-2105 MUF into FM
0120 unIDs 3,6	2315 WNFT-47 FL 159	(See note #2)
DECEMBER 1987	2325 WABW-14 GA 217	28 MS 0035 KTVI-2 MO 1056
1 ?? 0025 unID-3 10 kHz WFSB	2325 WTXL-27 FL 184	1st MS Ided!
1915 unID-2	2335 WJKS-17 FL 159	FEBRUARY 1988
2300 unID-2 (see note #1)	2350 unID-53 FL	1 GW 1925 WHHT-21 NH
12 Es 1810-1820 MUF ch. 3	(See my note below--jfc)	now CBS...

Note #1: "Blue light" off E. coast rptd next day on "Paul Harvey." (UFO scatter?--jfc)  
Note #2: Weird...TV virtually clear, FM barely cutting above noise...almost seemed like Aurora, but no video hash on the TV!

After a relatively active fall, the winter doldrums have definitely taken hold. The early morning MS 1-28 was a pleasant surprise. One question I'd like to throw out to the column: does the Mountain Time Zone have its own network feeds? (As far as I know, no. Since there are relatively few stations on MST, they are pretty much left to their own devices as far as choosing between East and West coast feeds, tape-delaying, etc. On another subject, I am almost certain that ch. 53 in High Springs FL is not on. I haven't seen them, but then, neither have I really been looking for them, hi! I think it's more likely you saw WPAN-53 in Fort Walton Beach. I also wasn't aware that WDGH-28 was on, but I haven't seen any Dx from that direction in a long time.--jfc)

Morris Sorenson, 111 Town Line, Milton ON L9T 2X1  
Not much to report! I did, however, visit Elmsdale ON (the place where I started my TV-DX career). I DXed in Elmsdale (155 highway miles North of Toronto) from 1966-1971 and again, briefly, in 1982. While there this past weekend, I added new locals CIII7-7, CICO6-6, and CICA13-13 to my Elmsdale log. No tropo was observed despite the fact that I had much better equipment available than what I use in Milton. 73, Morris Sorenson.

Robert S. Ross, VE3JFC, Box 4373, Stn. C, London ON N5W 5J2  
SEPTEMBER 1987 OCTOBER 1987  
28 Tr 0739 CBLFT13-15 ON 15 Tr 2220 CIII41-41 ON (testing)  
0745 CBLFT12-44 ON 16 Tr 0820 CICO38-38 ON  
(Robert, I misplaced your report... sorry about the delay getting it in the column!--jfc)

F. Fillmore Rasputin, 3rd hut from the left, Nuku'alofa, Tonga, South Pacific  
Here is a summary of DX for 1983: JANUARY--no DX seen, FEBRUARY--no DX seen, MARCH--no DX seen, APRIL--no DX seen, MAY--no DX seen, JUNE--13th 1030 local time KNXT-2 CA (5175 mile quadruple-hop Es). JULY to DECEMBER--no DX seen. Receiver is a 1948 DuMont, powered by my hamster, Smedley. Palm tree used as antenna...high gain, but very difficult to rotate... (Sorry about the delay on this report, but the carrier pigeon just arrived--jfc)

5

# ANARC UPDATE

EASTERN TV-DX

APRIL 1988

David Shapiro, 484 Hammond Dr., Griffin GA 30223

Hello everyone...it's been ages since I reported to the Digest as TV/FM bands are very crowded here by Atlanta and Macon stations, but from time to time I get some E-skip on both bands. I received some Es on chs. 3 and 4 around 1730-1900 on 12/19/87. Ch. 3 had a SS cartoon, and all I could make out was Space Patrol. Ch. 4 had a dancing class going with Manadana music (???) in the background. At 1900 ch. 4 had a news program, and during the ID I didn't see any calls on the screen. I suspect it was Cuba. I usually have heavy QRM from Atlanta chs. 2 and 5, but when Es does come in, and if it is strong, then the Es overrides the locals. My location is 40 mi. south of Atlanta and 60 mi. north of Macon. So long for now. (Thanks for the report--jfc)

OCTOBER 1987			DECEMBER 1987			JANUARY 1988		
16 Tr	0932	WBGU-27 OH 255	7 Tr	1158	WTAP-15 (OH) 300	19 Tr	1303	WLTV-39 PA 290
	1030	W56AF NY 72	12 Es	1936	MUF 89.9 MHz		1727	WMLF-56 PA 265
		(Silver Creek WNED-17)			2000 KATC-3 LA 1150			"WOLF-TV"//WOLF-38
		2355 WGGN-52 OH 215	JANUARY 1988					1757 W63AB OH 180
17 Tr	0110	W67AL ? OH T	19 Tr	0945	WRGT-45 OH 345			(Mansfield WVIA-44)
26 Tr	0744	WVIA-44 PA 260		1010	WPTD-16 OH 350		1925	WTVF-51 PA 295
	0747	WOLF-38 PA 260		1011	WOLB-20 OH 325			(HSC)
	0842	WOUC-44 OH 270			(7/WOUC-44)			
		(w/WOUB-20 TP)			1303 WLYH-15 PA 295			

(Bill, note that WTAP-15 xmitr is in OH, not WV--jfc)

**EQUIPMENT:** JVC HR-D555U VCR, AV-2600CA TV; VHF dipoles on balcony; UHF indoor twin bow-tie with amp...all in 12th floor apartment.

A very strange Canadian winter with mid-January DX with a temp of only 1° C. (34° F.). Just goes to show that you can't rule out DX at any time. There was a good inversion with temps aloft quite a few degrees higher. It'll be good to see ch. 22 open for DX once Global shuts down. Chs. 70-83 are just full of cellular phone calls when the DX rolls in. Funny, when I bought my scanner, a disclaimer was enclosed saying that 825-845 and 870-890 MHz coverage had been deleted to conform with new Canadian laws...yet many TVs/VCRs sold can still tune these ranges. Hope the RCMP doesn't take my TV away, hi! Well, 73's for now, Bill. (Just points out the inferior mentality of politicians who have nothing better to do than come up with new ways to abridge our rights with legislation that is largely unenforceable anyway. Your tax dollars at work!--jfc)

Greg Coniglio, 5100 Glenwood Dr., Williamsville NY 14221

FEBRUARY 1988		FEBRUARY 1988		FEBRUARY 1988	
18 Tr	1950	WKBD-50 MI 236	18 Tr	1954	Both TVO-18 stns
	1953	CKCO3-42 ON 176			(London, Peterborough)
				2010	WGPR-62 MI 224

**EQUIPMENT:** Emerson ECR137 TV (color), VHF rabbit ears, UHF 4-bay w/Archer 20db amp.

The 18th [of February] was a fairly good opening for February. Ch. 50 Detroit was very strong. FM has been good the past few weeks. Hopefully, this is an indicator of good things to come on FM and TV. 73s, Greg.

John F. Combs, 1308 Willow Branch #24, Jacksonville FL 32205 (904) 389-2451					
FEBRUARY 1988		FEBRUARY 1988		MARCH 1988	
12 Tr	0710	WLTV-23 FL 313	23 Tr	2225	WGSE-43 ? SC T
	0710	WEVU-26 FL 267		2225	WHMC-23 SC 293
	0710	WFLX-29 FL 272	29 Tr	2227	WHMC-23 ? SC T
	0710	WFBS-33 FL 312	MARCH 1988		
	0710	WTVX-34 FL 233	1 Tr	0950	WFLX-29 FL 272
	0710	WDZL-39 FL 312		0950	WDXL-39 FL 312
	0715	WPBT-2 FL 313		0950	WXEL-42 FL 272
	0740	WHFT-45 FL 311		0950	WHFT-45 FL 311
16 GW	2300	W59BC FL		1006	WTVX-34 FL 233
		(Jacksonville WCLF-22)		1007	WLTV-23 FL 313
23 Tr	2015	WJKA-26 NC 334	2 Tr	0125	Macon U's GA 201
	2115	WUNJ-39 NC 334		0125	WAGT-26 (SC) 215

**EQUIPMENT:** Sears 9" Panasonic 9", Sears 12" GEORGIA PUBLIC TELEVISION TVs (all B & W); 2 60 MHz quad-loops, 2 80 MHz quad-loops; channel 4 trap, FM trap; 1540 Stewart Avenue, S.W./Atlanta, Georgia 30311 4-bay UHF antenna, EU-4S pre-amp (on loan--see below). All antennas mounted indoors in my 2nd floor apartment (the landlord just shakes his head when he visits...).

A fair amount of tropo, including the first signals from Atlanta and Asheville in quite some time. W59BC appeared for about a day, then disappeared. I had an interesting chat with WCLF's c.e. about this, which will be reported to Bill Fabber's column! Had a very nice visit with Steve West while he was vacationing in Cocoa Beach--a day of DXing and general b.s! He loaned me the EU-4S pre-amp he uses on trips (and which he is considering selling) to see how it would work in my QTH. It really is a dandy unit! It can take a signal that is barely visible (or even not visible, having died on its trip through baluns and splitters, as well as the internal noise of the set itself) and pump it up to a watchable level! It does overload quite a bit from my local UHFs (9 miles distant), but I hope to obtain a UHF trap to deal with this.

\*\*\*\*\*  
**AN ADDITION** to the "Where's that transmitter" list (which appears in the TV-CCI AIDS column elsewhere in this issue of the VUD...): omitted from the list was WTGI-61 DE (NJ). I didn't catch this until I had mailed the final TV-CCI AIDS copy! BYE!!!  
 \*\*\*\*\*

ANARCON '88

Now is the time to decide about attending the 1988 ANARC Convention. This year's event will be held on the West Coast. It is being hosted by the American Shortwave Listeners Club of Huntington Beach California. They have planned a full schedule of events starting at 12 noon on Wednesday July 13th and ending on Sunday July 17th. The location where the convention will be taking place is the Irving/Grange County Airport Holiday Inn. The hotel is located a short drive away from some of Southern California's best known tourist attractions. And there is shopping nearby. The hotel has a restaurant, indoor pool and exercise facility. Room rates for the convention are \$50 per night for a single, \$70 for a double, and \$10 extra for each additional person. The registration fee is \$22 per person or \$30 for the family prior to May 1st, and \$25 and \$40 after May 1st. The fee for the banquet is \$25 per person. The speaker at this year's banquet will be Ray Briem, host of the Ray Briem Show on the ABC Talknet Radio Network. And many other prominent radio personalities are expected to attend. The big rumor is that Tom Meyer, the popular host of Radio Netherland's Happy Station Show will represent the station at the convention. For more information and a registration form, send a SASE to:

ANARC Convention Committee  
 16182 Ballard Lane  
 Huntington Beach, CA 92649-2204

Do it today- Remember- the registration fee increases after May 1st.

Interested in speaking about TV, FM DX'ing or DX'ing above 30 MHz at this year's convention? The convention committee is now looking for speakers. If interested, contact Stewart Mackenzie at the above address.

Interested in manning a table for WTFDA at the convention? It is a great deal of fun meeting fellow DX'ers and showing off your expertise. If interested, please contact either me or Bill Thompson at WTFDA's headquarters in Buffalo.

Other ANARC News

The All Ohio Scanner Club has applied for full membership in ANARC. AOSC specializes in VHF - UHF Scanning and monitoring in and around the State Of Ohio. They publish a bi-monthly bulletin called the American Scannergram. The American Scannergram has columns covering scanner activities in different parts of Ohio and adjacent states. Plus there are technical articles and a beginner's column. The AOSC has been in existence since 1979 and has over 400 members. Membership is open to all. The new membership rate is \$15 a year. For more information, send a SASE to:

All Ohio Scanner Club  
 50 Villa Road  
 Springfield, OH 45503

SPRACHMAN'S CORNER

New York Metro Area News Briefs

Death of a radio station- WGBB 1240 AM Freeport NY- 1924 to 1988. WGBB died in January. This local station served suburban Nassau County for over 60 years. It was the station that area residents turned to for accurate news, weather, traffic reports, plus the latest popular music and likable disc jockies who sounded like they really enjoyed their jobs at the station (including at least one WTFDA member). The station was a training ground for many who went on to bigger and better in broadcasting. It wasn't unusual for WGBB to be found broadcasting live from a local business or shopping mall, giving away dinners for two at a restaurant or a movie pass for a popular film. If the winter weather was bad, WGBB had the longest list of school closings. In the last few years, WGBB had been in failing health. Due to its close proximity to New York City and its small coverage range, its ratings were low. In the last few years, the station has had a succession of owners who paid a great deal of money for the station. The station's death was hastened by the latest owners, Noble Broadcasting of New York. Noble changed the station's format to news and information 24 hours a day. The last of WGBB's loyal listeners left. The station failed to pick up the new listeners that the management expected. Death came, 9 months after it became a talk station. WGBB was replaced by WBAB-AM. Now the station simulcasts WBAB-FM except for a daily morning 4 hour news block. On the day of its death, former staffers gathered for a funeral, coffin included. The station will be greatly missed.

Speaking of "dead radio stations", will WLIR be resurrected? The former owners of WLIR are trying to purchase WRCM 103.9 in Riverhead, NY. In their way are several petitions to deny the sale. If the sale goes through, few of WLIR's former listeners will be able to hear the new WLIR. WRCM's signal covers mid-Suffolk County to the East End. WDRE (the former WLIR) is heard from Western Suffolk County to Manhattan.

The East End of Long Island is a world apart for the radio listener. The East End is the area of Long Island from Riverhead, to Montauk Point. Being about 100 miles away from the "Big Apple", stations on the East End do not have to compete with the New York Stations. The main competition comes from Connecticut and Rhode Island. The East End's small population allows for great ratings that would not make a dent in the rating service elsewhere on Long Island. The top station on the East End is WJHB 107.1 (HB 107) from Westhampton.

All the television on the East End comes from Connecticut. Not a single New York Television station can be received without cable. At the eastern most point on Long Island, the light house keeper at Montauk Point gets great reception of the Providence stations. Montauk is the only place on Long Island where the Providence edition of TV Guide is sold in the supermarket instead of the New York Metropolitan edition.

The National Broadcasting Corp is selling off its radio stations across the USA. In New York, WNBC and WYNY have been sold to the Emmis Broadcasting Corp, present owners of WFAN and WQHT (Hot 103). Emmis will then have to sell one AM and one FM station before the sale is finalized. Speculation is that Emmis will move WFAN to 660 kHz and sell its 1050 kHz frequency. There has been no indication as to which FM station will be sold (my guess is WYNY).

Another New York Station is up for sale. The Metropolitan Broadcasting Corp is selling WNEW-AM, but is keeping WNEW-FM. Just another sign of FM's supremacy in the ratings over AM.

The New York Post was sold, but not without it nearly going out of business. Rupert Murdoch was able to get concessions from the unions after threatening to close the paper. With the concessions, the sale went through. Now Murdoch is able to continue to own WNYW channel 5.

Have you noticed the way simulcasting stations now present their ID's on the hour? The FM is mentioned before the AM. WALK in Patchogue NY never mentions its AM station, except in its hourly ID and it never mentions its AM frequency. WALK mentions its FM frequency as frequently as possible. Why don't these stations sell their AM stations if they rather be thought of as FM only?

Well, spring is here. And its time to think about summer vacations. For the fans of NWS radio, many of the state maps provided free by the state travel and tourism commissions show the frequencies and locations of the NWS stations. Many states have toll-free 800 numbers that allow you to call and have the maps sent without spending a penny. I'll have an up-dated list of 800 numbers in a future ANARC Update. Until then, refer to the prior ANARC Updates where these numbers were listed, or call the 800 information operator (1-800-555-1212).

Finally, a great source of media news is the local newspaper. Here on Long Island, our own Newsday has a column on the areas radio scene every Wednesday. This is where many of the ideas for this column come from.

Well, until next time, best of DX to everyone.



Steven P. Sprachman

**THE HUMAN LIE DETECTOR.**

THE MORTON DOWNEY JR. SHOW  
WEEKNIGHTS 9PM



# NORTHERN FM-DX

GREG CONIGLIO  
5100 GLENWOOD DRIVE  
WILLIAMSVILLE, NY 14221

APRIL 1988

DEADLINE: The 5th

I would like to make a few comments regarding reporting to this column: Please include ALL of the following: a mode of reception designation beside each day (see end of this column for codes) frequency and city/state for each logging. (New loggings should be underlined) Mileage is optional. Also, try to include as much extra information as possible, such as format, slogan, etc.

Regarding unids, if you only have a few, or if I can ID it, I will print them. Otherwise, they should really go to Robert Grant's CCI column.

Also, regarding the deadline, if a report comes in a day or two after the cutoff date (usually the fifth), there is a chance it will still get in, but ONLY if it is short. Even then, I cannot guarantee it will make it. The safest thing to do is send it in on time.

BILL RULLMAN - 8 AUTUMN WAY - BORZAH, CT. 06334 - 203-889-5069 DX ALERTLINE

EQUIPMENT: CARVER TX-11A TUNER...REALISTIC STA-740 RECEIVER (AMPLIFIER)  
CHANNEL MASTER STEREO PROBE 9 AT 35 FEET AGL...RG-59U FOAM COAX

OCTOBER 1987

6 TR  
2141 WJHB 96.7 ME Boothbay Harbor

NOVEMBER 1987

1 TR  
2117 WJHB 106.3 NH Nashua, "B-106.3"

3 TR  
1515 WJHB 95.9 NY Rome, "K-LITE 96" (trip to Watertown days off)  
1603 WJHB 94.9 PD Hull, comm for CHRO TV, FF

17 TR  
1732 WYNY 104.1 NH Hinsdale, "EZ Favorite..FM 104.1 WYNY"

20 TR  
1915 WJHB 95.9 NY Pittsford, "B-106", came in while on-air? Doing amazing job of nulling WJHB which is local strength at 235  
Commas

DECEMBER 1987

4 TR  
1925 WJHB 95.3 NY Southampton, (CALLS changed from WJHB. I thought I had a strange harmonic of Longfield, Mass. 103.1) which changed to 103.1 WJHB after only a year or two!

1339 WJHB 95.9 NY Somersville, WJHB, new call (1155) 95.9. This is the high peak one night!!!  
What calls is the new call for them?

DECEMBER 11th MS

0653 WJHB 95.7 ?? ??? I have it on tape..ID that is, but no idea where!

0719 WJHB 95.7 PA St Georges de Beauce, FF 10 sec long 310  
Maybe WJHB Louisville, KY??-doc

16 MS  
0619 WJHB 95.9 ?? the Gatesville Community Church  
1507 WJHB 95.7 ?? BFM music, "Stereo 95.7" 10SEC!!  
BLEBS (of 6) WJHB-FM and WYNY-FM are on. I think, but WJHB uses "WJHB 106" doc

02 ES  
1027 WJHB 94.5 FL Fort St. Joe, full scale signal. 1000  
1008 WJHB 95.7 AL Dothan 1040  
1625 WJHB 91.5 FL Tallahassee, MGNV 1040  
1632 WJHB 95.9 GA Mountain 1040  
1635 WJHB 95.9 FL Tallahassee 1040  
1637 WJHB 95.9 FL Tallahassee, "FM 95" 1040

02 ES this one was fun!  
1045 WJHB 95.7 MD Maiden 1000

145 TR 94.7 KY Newfields, NKS STATE! 1000.  
SUNSHINE JOURNAL! What the heck does that mean? Last set of calls I could find was 44E-doc.

0511 WJHB 94.5 AR Pine Bluff, "K-LITE" what are their calls? WJHB is the new call of

0511 WJHB 106.1 AR Jonesboro, "106" 1040  
0100 WJHB 91.5 KY Louisville 1040  
0106 WJHB 95.9 MO West Plains 1040  
0201 WJHB 94.3 AR Marshall 1040  
0202 WJHB 94.3 MO Springfield, "The 106" 1040  
0217 WJHB 94.3 AR Camden, "106" 1040  
0218 WJHB 94.3 AR Littleton 1040

1450 AM **KATE** RADIO ALBERT LEA 305 S First Avenue, Albert Lea Minnesota 56007  
95 FM **KEPI**

## BILL NOLLMAN'S REPORT - continued

## TOTALS AT END OF 1987

\*\*\*\*\*  
 TOTAL STATIONS 577  
 E-SKIP 212  
 METEOR SCATTER 14  
 \*\*\*\*\*  
 TOTAL POLITICAL UNITS  
 USA STATES 32  
 CANADA 4  
 WASHINGTON D.C. 1  
 TOTAL 37  
 \*\*\*\*\*

**WI♥LV**  
**WISCONSIN LOVES 94.9 FM**

KURT RICHARDSON - 23 BEVELL LANE - NORTH SYRACUSE, NEW YORK 13212-3558

## DECEMBER 1987

23 Es  
 1634 WDIZ 100.3 FL Orlando

Kurt mentions that chs. 2 &amp; 4 in Miami were also in.



BILL KRETSCHMER - 104 KOPP AVENUE - NORTH SYRACUSE, NEW YORK 13212-1606

## FEBRUARY 1988

6TH  
 0630 WEDD 97.9 NY New York, null in WPTX  
 17TH  
 1144 WIGV 105.9 ME Bath, Wx and ID  
 18TH  
 0021 WHTZ 100.3 NJ Newark  
 0023 WZPR 100.3 PA Meadville  
 0051 WQHT 103.5 NY Lake Success, \$  
 0100 WNCN 104.3 NY New York, ID, news, Wx, WKGN off  
 (on about 0130), carrier, no audio  
 0107 WLTH 106.7 NY New York, \$  
 0108 WVIP 106.3 NY Mount Kisco  
 0114 WALK 97.5 NY Patonogue  
 0159 WYSP 94.1 PA Philadelphia  
 0201 WHJY 94.1 RI Providence, ID "Rockin' Southern  
 New England, WHJY Providence"  
 0208 WRXZ? 103.7 ?? AoR (maybe WRX-RI, which is AoR-gc)  
 0209 WKGW 104.3 NY Utica, off again

## FEB 1st cont:

0017 WNLN 104.3 NY New York, \$  
 0220 WQNT 103.5 NY Lake Success, \$, again at 1100  
 1007 WHTZ 103.5 NJ Newark  
 1008 WWSL 100.3 PA Redia  
 15TH  
 0100 WQHT 103.5 NY Lake Success, \$  
 0200 CKGM 105.1 ON Peterborough, \$ (WQIV off-cc)  
 0205 WNCR 105.1 NY New York (calls are WISR-gc)  
 0203 WLTH 106.7 NY New York, \$  
 0211 WVIP 106.3 NY Mount Kisco, \$  
 0214 WEDL 106.1 PA Philadelphia, \$ (calls are WED-gc)  
 0216 CHEZ 106.1 ON Ottawa, \$  
 0220 CKOI 106.9 ON Ottawa  
 21ST  
 0100 WQHT 103.5 NY Lake Success, \$  
 21 MS  
 0111 unID's country (\$) and classical (\$) (are these 103.5?-gc)

DAVE NIEMAN - AKRON, NEW YORK 14001-9529

EQUIPMENT: Carver TX 11 tuner, Channel Master SP-9 antenna w/KU-11 lead-in at 25 feet above ground, 815 feet above sea level.

## JANUARY 1988

31 TrS  
 0724 WLTU 95.7 VA Norfolk, call + "Y-50", \$

## FEBRUARY 1988

2 TrS  
 1358 WHII 99.3 PA Harrisburg, ID, "99-HIT-FM", \$

## FEBRUARY 14 TrS

0900 WLSR 99.3 NY Lowville, ID into DNN Wx, "99-3"  
 Title & listserve of 3 FM, \$ 114  
 23 Es  
 1113 WEM 88.1 RM Hamilton, call, \$ 1060  
 25 MS  
 1432 WRRR 65.1 RR Little Rock, ID // KLRK  
 Listener supported public radio,  
 KLRK FM Little Rock; WRRR Little Rock; sur

## conclusion of DAVE NIEMAN'S report

## COMMENTS:

I am now using (TrS) instead of (Tr) to indicate tropo scatter rather than a general tropo (ducting) opening to an area. This should help to explain why I only heard WLTU from southern Virginia. Does anyone else THINK this is a useful way of indicating propagation conditions? (Dave, I think this is an excellent idea; I have incorporated it in my report and encourage others to do so as well. There is a fairly significant difference between the two modes. Tim McVey recently wrote a fine article concerning tropo ducting and scatter; it was in the NOV 87 VUB, I believe. See my report for more details gc)

Dave

MURRIS SORESEN - 111 TOWN LINE - MILTON, ONTARIO L9T 2A1 CANADA

Comments: All my DX since my last report has been logged away from my Milton J4H and I'm afraid none of it is too exciting. I did however make a brief visit to my former J4H of Ensdale, Ont. where a couple of new loggings pushed my totals there over 100.

From Gravenhurst, Ont. (approximately 100 hwy mi. N of Toronto)

Receiver: Sony ICF-2010 Antenna: Whip  
 NOV 20, 1987 GW & TR  
 2330 CFBK 105.5 ON Huntsville, (simulcast with CFBK-650)  
 2334 WBJQ 102.5 NY Buffalo, "MAGIC 102"

From Kemptville, Ont. (approximately 35 hwy mi. S of Ottawa)

Receiver: same as above  
 DEC 24, 1987 GW  
 2334 WPAC 92.7 NY Ogdensburg, "Pack 90-WPAC Ogdensburg"

JAN 1, 1988 GW

1838 WVNC 96.7 NY Canton, "WVNC Canton-your voice in the North Country"  
 adult contemporary music

From Emsdale, Ont. (app. 155 hwy mi N of Toronto/67 hwy mi S of North Bay)

Receiver: Sharp FV-610 Antenna: whip  
 FEB 20, 1988 GW  
 0836 SKIP 103.3 ON Parry Sound, rock, Emsdale log #100 (I thought their calls were CKLP-gc)  
 0845 CFBK 105.5 ON Huntsville, announcer Doug Blackwood CFBK (AH) 650 now silent.

/s/  
Murriss Sorensen

GREG CONIBLID - 5100 GLENWOOD DRIVE - WILLIAMSVILLE, NEW YORK 14221

EQUIPMENT: Pioneer TX-9100 tuner, Nikko NR-550 Receiver (used as an amplifier), 5-element FM antenna, roof mounted at approx. 20 feet AGL. Archerrotor used, as well as 75 ohm cable.

## FEBRUARY 1988

31 TrS  
 2000 WNLN 104.3 NY North Falls, call, take ID at top of  
 hour said: WNLN 104.3-ON/NEW/ENSDALE 104

## FEBRUARY 1988

1 TrS  
 1645 WJIA 104.5 NY Horseheads, K, Wx 111

## FEBRUARY 1988 continued

2 TrS  
 2000 WWSL 100.3 NY Utica, W, Wx, "Magic 102"  
 2050 WJZL 103.5 NY Wellsville, W, Wx, "99-3"  
 4 TrS  
 1900 WJIA 104.5 PA Kittanning, W, Love Radio 107  
 7 TrS  
 1000 WWSL 100.3 NY Utica, W, Wx, "Magic 102"  
 1000 WWSL 100.3 NY Utica, W, Wx, "Magic 102"



GREG CONIGLIO'S REPORT - CONTINUED

Contributions earnestly solicited and/or coveted!

Table with columns for date, call letters, frequency, and location. Includes entries for February 1989 continued.

Table with columns for date, call letters, frequency, and location. Includes entries for February 1989 continued.

COMMENTS:

The logos that have appeared in the last two columns are courtesy of Joe Feia. Thanks Joe!!

After CFRG 91.9 Kingston in my Clarence bandscan which appeared last month, I had "NOTE 1" Well, I forgot to say what that meant. I hear CFRG Thursday-Sunday only, so they must have a limited schedule. Also, 91.7 Ann Arbor's calls are WUOM, not WIQB. WIQB is on 102.9 and is not heard here 'cause CKLH Hamilton is in that same direction.

You may have noticed the different typestyle this month. I did the column this month on a Leading Edge w/a Okidata printer. February and March's columns were done on an Atari 800. The Leading Edge/Okidata is much easier to work with, and I feel it's font is more readable, but unfortunately, I only have them temporarily, so next month look for the Atari again. Comments on format (1 column or 2, fonts, etc.) would be appreciated. You may have noticed I did a few reports w/1 column this month.

Reporters: If you hear a station via troposcatter, please try to note it as such (TFS). (see Dave Newman's report). Troposcatter will usually only bring a station in for a minute or so. See Tim McVey's article in the Nov. 87 VUD for an explanation. I never heard scatter until I got a roof antenna. Now it is my most common mode of reception other than local. Here are the reception zones for anyone who is unfamiliar with them: Tropo Tr-Tropo TrS-TropoScatter GW-groundwave or local MS-meteor scatter Au-Aurora Scatter

TRIVIA ITEM FOR THE DAY:  
Limit of daily reception: (Clarence NY)  
Steady signal: WUOM 91.7 Ann Arbor, Michigan (271 miles)  
Troposcatter: WLHT 95.7 Grand Rapids, Michigan (354 m less)  
In nearly 100% of the time.

NOTE: WAWX Manlius, New York (Syracuse) has moved to 95.7 (from 95.3) Change noted just after I finished the column (March 5). Format AGR, "95-X". More details to come...

73,  
Greg

New Station, Translator Grants

- AL Linden 102.9 3000 h.v.; 100 m
AZ Benson KAVV-1.97.7 10 h booster
AR England KLRA-FM 3000 h.v.; 45 m
CA George (34-38; 117-171) 100.7 85 h.v.; 472 m
CA New Almaden KATD-2.95.3 10 h / im, 9
CA Grand Junction 107.9 100000 h.v.; 303 /
CA Augusta W296AS 107.1 (WYFA) 100.9
Waynesboro translator
GA Neco W296AR W296AR 107.1 (WYFA)
GA Sparta 102.7 3000 h.v.; 100 m, Hope FM
ID Burley K2800V \*103.9 (KRIC 100.5
Rexburg) KZZU-FM Spokane WA booster
ID Coeur d'Alene KZZU-FM 92.9 10 h /
ID Twin Falls K252CZ \*98.3 (KRIC 100.5)
IL Galena 107.5 3000 h.v.; 100 m
IL Mount Morris 100.5 3000 h.v.; 100 m
IL Pekin \*88.5 550 h, 490 v, 123 m, Central
IL Radio Fellowship, sharing time with:
IL Peoria \*88.5 4300 h.v.; 151 m, IL Valley
Broadcasting (100 meters
KY Burkesville WKYI-FM\* 98.5 3000 h.v./
KY Somerset 102.3 3000 h.v.; 100 m
LA Lake Arthur 107.3 3000 h.v.; 100 m
ME Bar Harbor 99.1 10700 h.v.; 152 m, BH
107.7 26000 h.v.; 36 m, Tanist Besto.
ME Lebanon W280CU 103.9 (WGLY 103.1
Waterbury VT) (sharing time with WBQ)
MD Baltimore \*96.7 19 h.v.; 23 m, / PCA
Communications Group
W261CD 100.1 (WGRX 100.7 Westminster),
"on World Trade center in downtown
Baltimore" (FM 105.3 Frostburg)
MD Cumberland W296AE 101.7 (WFRB-/
MA Northampton 106.3 3000 h.v.; 91 m
MN Mankato K249CZ 97.7 (KDOG 96.7
North Mankato)
MS Clarksdale 96.5 3000 h.v.; 100 m
MS Indianola 96.9 3000 h.v.; 100 m
MO Mountain View 96.7 1500 h.v.; 140 m
MO Warsaw K210AW \*89.9 (KCVO 90.7
Camdenton) (FM 103.1 Marysville KS)
NE Beatrice K288EK 105.5 (KNDY-/
NE McCook 93.9 50000 h.v.; 150 m
NV Boulder City K232CO 94.3 (KXTZ 94.1
Henderson) (107.5 Colusa CA)
NV Stateline K224CA 92.7 (KTMX-/
NH Hanover W285DD 104.9 (WHDD 106.1
Claremont) (KBOM 106.7 Los Alamos)
NM Espanola K296DZ 107.1/ (Ignacio CO)
NM Farmington K217B1\*91.3 (KSUT 91.3/
K288EL 105.5 (KRSJ 100.5 Durango CO)
NM Hatch 101.1 100000 h.v.; 293 m
NY Copenhagen W249AN 95.9 (WMHR
102.9 Syracuse) (im, Radio Catskill
NY Jeffersonville WJFF \*90.5 830 h.v.; 189/
NY Massena W280- 103.9 (WMHR 102.9)
NY Plattsburgh \*99.7 190 h.v.; 675 m, S, p,
see also "Deletions, below [Family Stations
NY Syracuse \*90.3 900 h.v.; 49 m, S, g,
OH Wooster W207AH \*89.3 (WCRF 103.3
Cleveland)
OK Lahoma 95.7 3000 h.v.; 100 m
OR Eugene KZAM-FM1 95.3 10 h, booster
PA Scranton W280CV \*103.9 (WKDN 106.9
Camden NJ)
PA Smethport 106.3 1000 h.v.; 145 m
RI Bristol \*88.3 100 h.v.; 23 m, Roger
Williams College (100.9 Waynesboro GA)
SC Aiken W228AW 93.5 (WYFA-/
SD Aberdeen 106.7 100000 h.v.; 216 m
SD Lowry (43 km SE Mobridge) \*91.9
100000 h.v.; 221 m, State ETV Board
SD Rapid City 104.3 100000 h.v.; 301 m
SD Redfield K249CX 97.7 (KCGN 101.5
Ortonville MN)

- TN Karns 93.1 3000 h.v.; 100 m
TN McKinnon (39 km E, Paris) 101.5
790 h.v.; 185 m (Family Stations, Inc.
TX Beaumont \*89.7 9000 h.v.; 173 m, S, g/
TX Brenham KLUF 94.1 3000 h.v.; 100 m
TX Stephenville 98.3 3000 h.v.; 100 m
UT Moab 96.7 3000 h.v.; -161 m
VA Appomattox 102.7 50000 h.v.; 150 m
VA Franklin WLQM 101.7 1500 h.v.; 143 m (m
VA Staunton WTON-FM 94.3 3000 h.v.; 100/
WY Freedom K249CW 97.7 (KLCE 97.3
Blackfoot ID) (er, 1 watt horizontal
NF Labrador City-Wabush 99.1 CHFI relay-/

Call Letters Assigned

- AL Citronelle 101.9 WSYE
AZ Globe 100.3 KGRX (not KRGX), p,
"eclectic adult-oriented rock and jazz.
Very progressive sound." Not "new wave"
as mistakenly wrote earlier
AR Hot Springs \*91.5 (not 91.1) KALR
AR Little Rock 94.1 KHLT-FM (from KHLT)
CA Coachella 93.7 KRCK (KCHV); going S?
CA Crescent North 97.9 KPDD-FM (KTGK);
AM is in Crescent City
CA Eureka 105.5 KECU
CA Freedom 107.5 KPIG (KLZC), country?
CA Long Beach 97.9 KSKQ-FM (KNOB),
Spanish, r, AM is in Los Angeles, "FM-98"
CA San Francisco 98.9 KHIT-FM (KCCY), r
(CHR), "Gorilla," sale to Jim Gabbert left
through; oldies r has "very little stereo
separation," KHIT (AM) is in Spokane WA
CO Aspen 97.7 KSPN-FM (KSPN); AM is in
Vail)
CO Delta 95.1 KKLY (KLDK)
CO Kremmling 106.3 KRKM (KTLD-FM)
CT Norwalk 95.9 WGMX (WLYQ)
FL Starke 106.3 WEAG-FM (WPXE-FM)
FL Lakeland 94.1 WEZY-FM (WVFM; AM is
in Cocoa FL) (still r)
GA Americus 94.3 WDEC-FM (WADZ), /
GA Atlanta 96.1 WKLS (WKLS-FM)
99.7 WAPW (WARM-FM), still "Power-
99.7," r
GA Boston 106.3 WXTR
GA Milledgeville 107.7 WPWS
HI Wailuku \*90.7 KKUA (KMRT)
IL Aurora 107.9 WYSY-FM (WAUR)
IL Casey 104.3 WCBH
IL Gaiva 102.5 WZUU
IN Indianapolis \*90.1 WFYI-FM (WIAN)
IN Van Buren 99.3 WMRR
IA Sac City 105.1 KSRG
KS Hiawatha \*91.1 KJTH (KHIA)
KS Kingman 99.3 KGLV
KS Pratt 93.1 KLLS (KGLS)
KY Lancaster 105.1 WTCF (WHBK)
KY Louisville 106.9 WVEZ-FM (WVEZ)
LA Alexandria 100.3 KRRV-FM (KRRV)
MD Crisfield 96.9 WLSL
MD Hurlock 100.9 (WAA)
MA Nantucket 96.3 WNTX (WXJY)
MI Baraga 104.3 WMVE
MI Gulliver 94.7 WTIQ-FM; AM is in Manistee
MI Lakeview 106.3 WRIZ-FM
MI Norway 94.3 WNWY (WJAU)
MI Rockford \*91.9 WFSJ
MN Collegeville \*88.9 KNKR (KNJR)
MN St. Cloud 104.7 KCLD-FM (KCLD),
still r (hits), FM-AM simulcast, only
mentioning FM frequency on air
MN Worthington 935 KNRJ
MO Clinton 96.1 KLRQ
MO Gainesville 99.7 KMAC
MO Sparta 96.5 KJLR
MT Miles City \*90.7 KECC

- NE Winnebago 105.7 KSUX
NV Las Vegas 101.9 KPMS-FM (KFMS);
AM in Paradise NV keeps KFMS
calls; affects 10 translators)
NV Tonopah \*91.7 KTPH
NM Jal 107.1 KPQD
NM Las Vegas 98.3 KLLNM
NY Cobleskill 103.5 WACS-FM (WITU)
NY Rome 96.1 WFRG-FM (WFRG), still k
NY Syracuse 107.9 WRRP (WRRR), now b,
"elevator music... AM WDRR-1260
switched to k 2-29-88"
NC Banner Elk 100.7 WJZS
ND Wishek 100.3 KMVC (["FM"])
OH Bellefontaine 98.3 WPKO-FM (WTOO/
OH Canton 98.1 WTOF (WTO-FM)
OH Edgewood 102.5 WZOO-FM (AM is in
Asheboro NC)
OH Xenia 95.3 WOJK (WBZI)
OK Lawton 98.1 KKRX-FM (KKRX), r
OK Lindsay 105.1 KBLP (CA)
OR Bend 98.3 KIDD-FM (AM is in Monterey/
OR Medford 103.5 KOPE
OR Portland 97.1 KKSIN-FM (KLLI), "Kissin'
FM"; r (oldies). "Since simulcasting, they
don't even mention the AM station any
more." AM is in Vancouver WA.
PA Central City 101.7 WYSN (WWZE)
PA Kane 103.9 WLMJ (WIFI)
PA Pittsburgh 94.5 WWSW-FM (WWSW)
PA Ridgebury 96.5 WMKB
SC Cayce 96.7 WYYS (WZLD), sr, "dance-
CHR," nonID: "Yes 97"
SC Darlington 105.5 WMMG (WDAR-FM)
SC Newberry 106.3 WMMX
SC Ridgeland 109.9 WZBZ (WXRY)
TN Franklin 100.1 WWRB-FM (WWRB); ID
with Nashville where its AM affiliate is
TN Harrison 92.7 WWBR-FM (WRGZ), rg,
AM-FM simulcast
TN Wartburg 101.3 WGTG
TX Amarillo 97.9 KMLT (KGNC-FM)
TX Lamesa 100.3 KUFD (KLSG)
104.7 KLSG (KUFD)
TX Odem 98.3 KKHQ (KXTO)
TX Rockdale 98.5 KRXT
TX San Angelo 93.9 KTEO-FM (KYSD)
UT Bountiful 99.5 KBZE (KLZX)
UT Brigham City 100.7 KHSB
VA Crozet 102.3 WJLT-FM (WJLT)
VA Harrisonburg 104.3 WNCY-FM (WJSY)
VA Spotsylvania 99.3 WYND-FM (AM is in
DeLand FL) (Best Oldies")
WA Tacoma 97.3 KBSSG (KNBQ), r, "K-
WV Buckhannon 101.3 WUBI
WV Mountsiville 96.5 WRKP
BC Atlin \*90.1 CBUA

See Also March VUD For
AL Mobile WAHV 96.1 The Wave nonID,
Pugh, p. 21
KS Lateral KLSL 101.5 LS Radio nonID,
NM Raton KRTN-FM 94.3 note stereo, k
format, Pugh, p. 21 [FM nonID, Pugh, p. 21
NC North Wilkesboro WKBC-FM 97.3 KBC-/
TN Centerville 96.7 now WCOT (not WHLP),
Pugh, p. 20 (Inot "K-94"), Pugh, p. 21
TN Oak Ridge WKNF 94.3 94-KNF nonID/

FM Stations
NY Ithaca 97.3 is WYXL, not "WXYL,"
March p. 18, "Formats"
NY Watertown \*90.9 calls are WJNY (not
"WUNY"), FM Atlas-11th edition, p. 114.
Make this correction after you get your
new "FM Atlas"
OH New Philadelphia WNPQ 95.9 not on p.
150 in the new "FM Atlas," add WNPQ



# SOUTHERN FM DX

Danny Buntin  
1312 N. Skyline  
Stillwater, Ok 74074

APRIL 1988

DEADLINE: 10th

For FM DX reporters from: AL, AR, AZ, CA, CO, DE, FL, GA, KS, KY, LA, MD, ME, MI, MO, NE, NY, Ok, SC, TN, UT, VA & WV. Also DC.

Well, the dullest time of the year, the last month or two, has been just that, so no MS or far ranging tr this month. So a "lite FM DX" edition this month as John Combs would put it. We should start going off diet real soon as the 1988 DX season starts shaping up. So start watching DX conditions more closely.

Of interest to tuner freaks, March High Fidelity featured a test report on one of the 2 interesting new super tuners from Harmon International. The all important adjacent selectivity checked out better than 40 db, the highest ever measured by the magazine. While interest in super tuners has probably died down, since so many FM DXers who could get one have opted for either the Onkyo or Carver, maybe though the Harmon International at only about half the price will revive renewed interest.

Monitoring Times fans are probably glad to know that publication has changed its format to a more conventional magazine style and is available on magazine stands now.

Keith D. Pugh, 227 Martin St., New Hope, AL 35760

Eqipt: Onkyo T-9090, \$ Probe 9 at 30', GM rotor

2/3 ms (prev. ds)	2/14 tr	158
1124 <u>KREB</u> 94.7 Ok Oklahoma City	0000 <u>WTJB</u> 91.7 GA Columbus, s/off, // WTSU	
"Here at Oklahoma's best country"	2/21 tr	
tr	1557 <u>WSJC</u> 107.5 MS Magee, k, ID	275
1309 <u>WABC</u> 95.7 NC Hickory, rp, "The Rock", ID	2/26 tr (local WLRH 89.3 at low pwr)	290
2/4 tr	1239 <u>WTPH</u> 89.5 GA Columbus, g, ID	158
1104 <u>WAGI</u> 105.3 SC Gaffney, ad, ID	1300 <u>WLBF</u> 89.1 AL Montgomery, g, ID	148
2/8 tr	1300 <u>WKGC</u> 90.7 FL Panama City, c, ID	305
1625 <u>WYNC</u> 105.3 IN Evansville, k, ID	"Cu, f Coast Community College"	240
1653 <u>WENM</u> 107.9 WV Huntington, g, ID	1318 <u>WBCX</u> 89.1 GA Gainesville, b, ID	142
2/11 tr	2/27 gw?	
1034 <u>WQMF</u> 95.7 IN Jeffersonville, rp, ID	1800 unID 88.3 unmodulated stereo, from w.n.w, 15 db signal, left the air just after logging. 73	
2/13 tr		
1535 <u>WYMI</u> 102.5 NC Hendersonville, ID		
"Greenville, Spartanburg, Anderson"		

Matt Sittel, 220 Brookfield Dr., Kingsport, TN 37663

Hi! DX is so slow this month, (So is your post office. Your card took 7 days to get to me. From the post mark on the back I see it had to go through New Orleans before ending up here, just barely in time for this month's column. DE) I can fit everything on a post card this month! Well, not that slow, I logged 2 new ones, so I can't complain.

2/18 tr	2/22 tr	
2056 <u>WWMY</u> 94.5 NC Eden, "My 94.5"	2232 <u>WTFE</u> 105.9 OH Middletown, wx	236
2133 <u>WQLT</u> 107.3 AL Florence, calls	2/28 tr	
2/20 tr	1046 Chattanooga 92.3, 106.5	186
1854 <u>WQOK</u> 97.5 VA S. Boston, calls	ms	
	1124 unID 107.3 83 s. burst! w/"Sound of Music"	

DX has definitely sunk down to dismal levels. Amazingly, I was able to log two new stations this month! Caught WQOK 5 miles northwest of my QTH on car \$. Weird--you have to go farther west to catch east!? 2/28's ms burst was the longest I've ever received--too bad I couldn't ID it. It had that "Do-Re-Mi" song on. I've noticed ms to be very frequent, so far this year. Have I just been missing it before, or is ms good this year? Just think, s-skip season begins soon. 73's and great DX to all.

Tim K. McVey, 9906 El Dee Dr., Ellicott City, MD 21043

Yes, I am still alive and well as a DXer! My new address is a house out on the fringes of Baltimore's urban sprawl. This is a location near the crest of a hill at about 420' ASL. The antenna is a Probe 9 at 30' with rotor, recently purchased from Philadelphia DXer Steve West. The tuner is a Pioneer F-5 with analog tuning/digital readout and modified IF for much-improved selectivity and spur rejection. Certainly, now I'm ready to become a regular reporter to SFM DX again after several years' absence.

#####

# Television news

Bill Fabber, editor  
336 Atlantic Street  
Bridgeton NJ 08302

## ABBREVIATIONS USED IN THIS COLUMN:

AAT Antenna height above average terrain  
AG Antenna height above ground  
ASL Antenna height above sea level  
AZ Azimuth (North=0°)  
BT Beam Tilt  
CIR Circular polarization  
CP Construction permit  
CRTC Canadian Radio-television and Telecommunications Commission  
DA Directional antenna  
ELL Elliptical polarization  
ERP Effective Radiated Power  
FCC Federal Communications Commission (USA)  
HOR measured along a horizontal plane  
MAX In the direction or elevation of maximum signal strength  
MP Construction permit modification  
TL Transmitter or tower location  
+ carrier frequency offset 10 kHz above standard  
- carrier frequency offset 10 kHz below standard  
z carrier frequency not offset

## APPLICATIONS FOR NEW TELEVISION STATIONS

ST	CH	ERP	HAAT	CITY/APPLICANT
OR	28	391	911	Eugene; Oregon Commission on Public Broadcasting
TX	28	5000	1713	Bryan; Silent Majority Group Inc. (amended)
VA	42	142	1300	Front Royal; The Shenandoah Valley Educational Television Corp.
WI	16	10.7	414	Mariontown; Tony C.G. Herdey (amended)

## APPLICATIONS DISMISSED

CA	El Centro; ch.7; Garcia Communications Ltd.
FL	Key West; ch.22; Conch Republic Television Inc.; Hartke Communications Corporation.
LA	Minden; ch.21; Carl M. Fisher; John Jones Jr.
NJ	Newton; ch.63; Family Stations Inc.; Newton Broadcasting Company; Newton Television Inc.; Newton Television Ltd.; Press Broadcasting Company; Vanguard Broadcasting. (Review Board decision)
NC	Rocky Mount; ch.47; East Carolina Communications; RMS Broadcasting.
OK	Duncan; ch.40; Calvin Russ.
OR	Eugene; ch.28; The Oregon Commission on Public Broadcasting. (returned)
PA	Williamsport; ch. 53; MMM&K Inc.
SC	Rock Hill; ch.56; Catawba Communications Inc.; Family 55 TV Inc.; Metrolina Media Inc.; Susan S. Mulkey; Neisler Ltd. Partnership. (Review Board decision)
TX	Paris; ch.36; Mountlake Productions Ltd.; The Yellow Rose of Texas.
WI	Janesville; ch.57; Harold Corporation.

## CONSTRUCTION PERMITS GRANTED

ST	CH	ERP	HAAT	CITY/APPLICANT
FL	22	5000	571	Key West; Penny Drucker
MO	55	1000	984	Poplar Bluff; Larry Gene Dare
NJ	63	5000	921	Newton; Mountain Broadcasting Corporation (Review Board decision)
NC	47	1300	1023	Rocky Mount; Family Broadcasting Enterprises
PA	53	105	101	Williamsport; Williamsport TV Associates
SC	55	5000	1952	Rock Hill; Koontz Communications Ltd. Partnership (Review Board decision)
TX	36	1376	697	Paris; G&D Communications Inc.

## CONSTRUCTION PERMITS CANCELLED

ST	CH	CALLS	CITY
FL	51	WJOE	Marianna

## APPLICATIONS TO MODIFY CONSTRUCTION PERMITS

ST	CH	ERP	HAAT	CALLS	CITY
CA	45	5000	1325	KDOB-TV	Bakersfield (changed from ch.48 by FCC action)
NC	14	5000	469	WGTJ	Greenville (from ch.38)
TX	42	1130	480	KMLM	Odessa
WA	33	5000	1932	KBGE	Bellevue (amended)

## CONSTRUCTION PERMIT MODIFICATIONS GRANTED

ST	CH	ERP	HAAT	CALLS	CITY
TX	49	5000	1184	KTFH	Conroe

## APPLICATIONS TO CHANGE EXISTING FACILITIES

ST	CH	ERP	HAAT	CALLS	CITY
CA	30	1380	1095	WPBA	Atlanta (cp)
IN	39	1370	730	WFWA	Fort Wayne (cp)
OH	14	5000	1000	WPTO	Oxford (cp)
MA	6	100	1000	WLNE	New Bedford (cp)
MO	8	310	793	KOMU-TV	Columbia (cp)
SC	28	5000	1500	WT65	Hardeeville (cp)
VT	41	1053	2245	WVTA	Windsor (cp)
VA	27	1230	2000	WVFT	Roanoke (mp)
WA	28	?	1998	KWYU-TV	Spokane (cp; what happened to CP to raise ERP from 1198 to 2400kw?)
WV	24	3475	1491	WNPB-TV	Morgantown (cp)

## CHANGES GRANTED STATIONS ON THE AIR

DC Washington; WFTY, ch.50; granted MP to change ERP from 2450 kw max/1869 kw hor to 2438 kw max; 810' AAT/732' AG/1020' ASL (I have only existing HAAT of 570' to compare with that, but definitely a boost of a few hundred feet); same TL; polarization and other technical data unavailable; this station already reaches out quite far during coastal tropics with that ERP, so I wouldn't expect that increase in height to make an improvement.



IN South Bend; WSBT-TV, ch.22; granted CP to raise ERP from 2175 kw max/586.53 kw hor to 4745 kw max; antenna height reduced 60' to 1066' AAT/988' AG/1857' ASL; same TL; polarization and other technical data unavailable. Look for clearer signal, both for DX and local coverage. Without any increase in antenna height, I'm not expecting DX outside the Ohio valley to be any more frequent.

PA Erie; WSEE, ch.35; granted CP to reduce antenna height 130' to 836' AAT/620' AG/1960' ASL; same TL; polarization and other technical data unavailable. At 1186 kw ERP, it should still have enough tower height to provide DX.

PR San Juan; WIPR-TV, ch.6; raise ERP from 53.7 kw to 57.9 kw max; reduce antenna height 154' to 2751' AAT/935' AG/3890' ASL; same TL; polarization and other technical data unavailable. Won't help DXers, but at least high-flying birds will be a little safer.

TX San Antonio; KABB, ch.29; probably as-built adjustments, since the station just signed on a few months back. 5000 kw max ERP; 1453' AAT/1470' AG/1982' ASL; coordinates 29°17'27"98°16'12".

**CALL LETTER APPLICATIONS: NEW STATIONS**

ST CH CALLS CITY/APPLICANT  
 ND 7 KJRR Jamestown; Red River Broadcasting

**CALL LETTER GRANTS: NEW STATIONS**

ST CH CALLS CITY/APPLICANT  
 CO 53 KWHB Castle Rock; LeSea Broadcasting  
 KS 3 KSWK Lakin; Smoky Hills Public Television Corporation  
 MI 18 WHTV Jackson; Jackson TV Co.  
 WI 45 WKTB Richland Center; Kaul Broadcasting Company Inc.

**CALL LETTER CHANGES: EXISTING STATIONS**

ST CH CALLS CITY/APPLICANT  
 CA 63 KADY-TV Oxnard; KTIE  
 MA 46 WHRC Norwell; WRVT

**NEW STATIONS ON THE AIR**

AZ Yuma; KYMA, ch.11; date reported last month; address: Yuma Broadcasting Company, Box 650, Yuma CA 85364.  
 FL New Smyrna Beach; WCEU, ch.\*15\*, went on the air 2/8/1988; 708 kw max ERP; 576' AAT/569' AG/606' ASL; TL on WWLV(FM) tower, Indian Lake Road, 7 miles WSW of Daytona Beach; coordinates 29°10'24"/81°09'24"; DA BT HOR; address: Coastal Educational Broadcasters Inc., Daytona Beach Community College, Box 1111, Daytona Beach FL 32015.

**FORUM**

An article from **DAVE SINCLAIR** (Vancouver, B.C.) relating to United States news, from the 9/17/87 *Wall Street Journal*: "Thanks largely to deregulation, the cable television industry is booming, cable systems are selling at mind-boggling prices, and cable stocks are the darlings of Wall Street. Cable, says Barry Lucas, an analyst for First Manhattan Co., has become 'an unregulated monopoly.' Exactly, say cable's adversaries. Stunned by cable's growing might, motion picture studios and independent broadcasters, which depend on cable to carry their programs, want its power checked." "Much of that power and wealth result directly from deregulation, which began after Congress passed the Cable Communications Policy Act of 1984. Although the professed goal of deregulation was to balance cable's powers with those of broadcasters and program producers--and give consumers the broadest possible viewing choice--executives of those industries contend that the retention of some earlier rules favoring cable has tipped the scales up in its favor." "For months cable's adversaries have been lobbying for a congressional review of cable deregulation." "Spurred by the growing outcry from cable's competitors, the House Telecommunications Subcommittee plans hearings next month on the status of cable after deregulation." "Meanwhile, the [FCC] is reviewing industry comments on whether it should ask Congress to abolish cable's 'compulsory license' to retransmit broadcast signals for only nominal payment." "The FCC also is considering whether to reinstate the 'syndicated-exclusivity' rule, which it had repealed in 1980 to further help the cable industry. Under the rule, a cable operator was forced to black out an imported program if it appeared on a local TV station that had paid for exclusive rights to it."

**RICHARD CLARK** (La Vega, Dominican Republic) spent a month in Puerto Rico and sent these updates from his observations:  
 WSTE, ch.7, San Juan (Super 7; "since they moved their antenna from Mt. Jayuya to San Juan they are now the weakest UHF in Puerto Rico").  
 W07., Ponce PR (Super 7; "Any ID of call for this translator?").  
 W08BM, Mayaguez PR (Super 7; LPTV)  
 WUSN, ch.68, Humacao PR (Video 68; on the air July, 1987; video music format).  
 Armed Forces ch.38, Roosevelt Roads PR ("This stations seems to be quite low in power").  
 Armed Forces ch.40+, Boqueros PR (Aguadilla) ("Only one that makes it to the Dominican Republic").  
 Armed Forces ch.40, Fort Allen ("It seems to be inactive or very low power").  
 Armed Forces ch.56, Vieques Island ("Inactive or very low power").  
 WORA, ch.5, Mayaguez PR (now in stereo).

**FRED McCORMACK** (Fargo ND) sent an article from the 1/18 *Multichannel News*: "Two non-commercial, college-based broadcast television stations in Oklahoma and Illinois have eschewed Public Broadcasting Service programming in favor of The Learning Channel, the basic cable network.... Executives at both KXON-TV of Claremore, OK, and WEIU-TV, of Charleston, IL,

said their stations became TLC affiliates because they did not want to duplicate the fare of local PBS stations. Half of KXON's daily schedule (11 hours, seven days a week) consists of TLC shows, mostly telecourses that can lead to college credit, according to James Baum, station manager. The station, which is based at Rogers State College, began broadcasting July 1. "We chose The Learning Channel because of its quality instructional programming as an alternative to PBS. There already was a PBS statub (in Tulsa, 20 miles away)," Mr. Baum said. He added that KXON is under a mandate from the National Telecommunications & Information Agency Facilities Program, from which it received a \$355,000 grant in 1985, to carry non-duplicative programming. The remainder of KXON's schedule is composed of locally produced news and public affairs shows, as well as programs from the Native American Public Broadcast Consortium." "For WEIU, the reasons for TLC affiliation was slightly different, according to John Beabout, the station's general manager. WEIU, which is based at Eastern Illinois University, previously was a cable channel on one cable system that cherry-picked from TLC, Financial News Network and Biznet, he added. In July 1986 the channel became a broadcast station to take advantage of the lower cons in technology to better serve the 10-county area," Mr. Beabout said. "WEIU blends the best of cable, public broadcast and independent TV programming, Mr. Beabout said. During the week, TLC is aired eight hours a day, FNN for five hours, and the station produces its own news early- and late-evening news shows. TLC programming is also shown 6 a.m.-11 a.m. on Saturdays." "At night, the station programs cultural and entertainment shows, including film classics and PBS programming, including British and Australian comedies not carried by the local public station, he said."

Several articles from **WENDELL FORD** (Westville IN). From the 1/25 *Gary Post-Tribune*, Howard & Sons is selling its 30 lbs. net wt. Piggy Pack at \$59.95! This includes 5 lbs. each of pork chops and spare ribs, 4 lbs. pork steaks, 3 lbs. each of sausage, pork loin roast, country ribs, and pork butt roast, and 2 lbs. each of pork outlets and bacon. They accept food stamps, Visa and MasterCard.  
 From the same clipping: local news production in northwestern Indiana's two new television stations is hindered by lack of money. "With two television stations licensed in Northwest Indiana, local viewers may expect to see news and public affairs programs focusing on area issues and events. If Richard Parker and Earmon Irons get their way, those local programs will become reality. The problem is money. Parker, the manager of WYIN-TV (Channel 56), the Public Broadcasting System affiliate in Merrillville, is pursuing the money necessary to make his 2-month-old station an important part of community life. Irons, a partner in WPWR-TV (Channel 50) and the executive producer of 'Dimensions Northwest Indiana,' the only Northwest Indiana public affairs program now airing on broadcast television, is looking for the money to expand on what has been started. While the two are not competing for the same dollars - WYIN seeks revenue from corporate sponsors and private subscribers, while WPWR is a commercial station dependent on advertising - both men say money is what stands in the way of area television coverage."

Can somebody tell me the difference between a corporate sponsor and a commercial advertiser, outside of how hard they can push their products and services?  
 Irons, a Gary resident, is a minority partner in WPWR. The station has its studios in Aurora, Ill., broadcasts from Chicago's Sears Tower, but is licensed to Gary. WPWR, which previously broadcast on Channel 60, acquired the Gary license in a three-way trade, in which WYIN, which held the rights to Channel 50, took part. The [FCC] requires stations to produce public affairs programs focusing on the area to which the license is assigned. 'Dimensions Northwest Indiana,' ... serves to fulfill the FCC requirement, Irons said, but he added that the station plans to expand its coverage of Northwest Indiana beyond the minimum required by the federal government.  
 They did say pork butt roast, didn't they?  
 The 2/4 *Post-Tribune* reports, "Joseph Stroud, the California restaurateur who holds the license (read 'construction permit' - wbf) for Channel 62, assigned to Hammond (WJYS - wbf), refused comment on reports he planned to begin broadcasting by October. An October start up for the station seems unlikely, considering the amount of time needed to construct an antenna and install broadcast facilities." He's had the permit for more than two years already.  
 Two UPI releases on troubled WTTV, ch. 4 in Indianapolis. The 2/9 release reports that Tel Am Corporation has received three bids to purchase the station, and can either sell the station to one of them or go bankrupt. The 2/13 release reports that Emms Broadcasting is the successful bidder, but that the station's creditors must review the bid before a sale is agreed upon.  
 The 1/26 *Gary Post-Tribune* reports that Rupert Murdoch would be given a temporary reprieve from having to sell the New York Post. FCC cross-ownership rules do not permit a person to own part of all of a television station and a newspaper in the same area.  
 Several articles from **FRANK ADEN** (Boise ID). The 11/22 *Oregonian* reports that Univision and Spanish International Communications Corporation are back together under common ownership again. Hallmark Cards Inc. and First Chicago Venture Capital, a unit of First Chicago Corporation, earlier purchased the ten television stations for \$301.5 million from SICC, which was forced to sell its stations because of foreign influence and control. The article reports that Hallmark and First Chicago have agreed to acquire Univision for nearly \$300 million. The deal was to be completed in January.  
 An article from the *Twin Falls Times-News*, undated, reports that Western Telecasting Company of McLean VA applied for a permit to construct a full service television station on channel 35 in Twin Falls. "The only other full service station licensed in Twin Falls is KMVT-TV. The new station will provide broadcasts on 'issues of public importance in Twin Falls and the rest of its service area, including news interviews, coverage and public service announcements,' according to a statement from

the company included in the application. But the application doesn't indicate if the station would be a network affiliate or independent.

The 12/18/87 Oregonian reports that the Oregon Public Broadcasting System "hopes to expand its Eastern Oregon television service via a television translator atop Lookout Mountain." That is, southeast of Baker OR, at 7123' ASL. "Under that plan, OPBS Channel 13 would be converted to Channel 8 and beamed to Durkee and the Snake River towns of Halfway and Richland."

Here's a small article from the 2/18 Oregonian about a small television station in a small town, Glendive MT: "A television station here? Yes, KXGN, in the tiniest of the nation's 213 TV markets, ending in a once thriving, now-wilting town of 6,500 in eastern Montana. It's getting harder and harder," said general manager-sales manager-sports-caster-commercial voice-TV bingo host Dan Frenzel, known in these parts as Dapper Dan. How small is KXGN? So small that it is a CBS affiliate that also airs NBC programs. So small that its total staff numbers only eight. So small that when 23-year-old Terry Kegley calls a meeting of his full-time 'Action 5 News' staff - news director, anchor, reporter and cameraman - he is the only one in the room. So small that the average cost of a 30-second spot in prime time on KXGN is a mere \$15. Local ads are not enough to sustain the station. "We were surviving on national spot sales, but that's gone down 200 percent - 300 percent since Black Monday, costing us 20 grand a month," Frenzel said. "KXGN's signal extends 140 miles, reaching such hamlets as Ekataika, Plevna, Ollie, Willard and Mildred, some with as few as 50 inhabitants." "This used to be a railroad and oil town," Frenzel said. "But the railroad... stopped coming through here... and the oil boom stopped three years ago." That along with a farming recession and corporate pullouts from the Glendive area, led to a devastating 33 percent population plunge (from more than 10,000) and the death of many small businesses. "Now you can understand why there are so many vacant channel assignments in that part of the country."

**JOHN COME** writes, "The other night (2/16) I returned home to note a rather strong signal on channel 59. It frequently superimposed reading 'W59BC JACKSONVILLE FL PROGRAM TEST' and was relaying WCLF-22 Clearwater, a Christian station. This new signal caught me totally unaware, and I called WCLF the next day to check on it. Their exec said that they are putting a number of xlters on the air around FL. I asked him why they had chosen ch. 59 when there was a CP granted for a full-power station on that channel not too long ago. He was very surprised and a bit angry when I heard this, and swore that they had no knowledge of the CP, and would not have gone ahead with the xltr if they knew they would be 'bumped' within a year or two. Shortly after our conversation, the W59BC signal disappeared and has not been seen since." Smart move, John. Now call the owners of that music video LPTV, WIGAX, and ask them that same question!

**NETWORK WARS!** From an unreferenced Jacksonville FL newspaper article: "WFLV TV 13, the city's ABC affiliate, will become the city's NBC affiliate sometime this year, station officials

announced yesterday. The change reverses a March 1980 switch. In that move, TV-12 jumped from NBC's camp after 23 years to join ABC's fold. At the time, ABC was the nation's No. 1 network and NBC was last in the ratings. Now, the reverse is true. Although the contract had been signed, it is predicted that WUGO TV 17 will realign itself with ABC. "We're talking with ABC right now," says Robert Sutton, president of Media General Broadcasting Co., which owns TV 17. "Like other stations nationwide, TV-12 became an ABC affiliate when that network was winning in the ratings. ABC rewarded NBC affiliates who switched allegiance with sizable fees - one estimate is that TV-12 receives up to \$2,300 per hour of any ABC programming it airs." "In the meantime NBC has risen to the top berth. With momentum from *The Cosby Show* and a strong Thursday night lineup, NBC is the one now wooing affiliates. The ones they are primarily after are VHF stations..." "The re-affiliation with TV 12 comes during renewed efforts by NBC to upgrade its affiliates to VHF stations. According to a recent article in the trade publication Electronic Media, Jacksonville and Charlotte, N.C., had been targeted as key markets for negotiation." That means we might see a future network swap in Charlotte NC, making WSOO-TV ch.9 switch from ABC to NBC, and WPCQ-TV ch.36 switch from NBC to ABC.

Another newspaper clipping from the Associated Press: "The [FCC], signaling a tougher stance on minority hiring, put conditions yesterday on the license renewals of 11 Southern (sic) television stations whose affirmative action efforts it found to be defective. One of those cited was Jacksonville's WNFT TV-47." "The FCC renewed the stations' licenses but said they must report periodically to the agency on their efforts to recruit, hire and promote qualified women and minorities. The commission will monitor the stations' efforts and if not satisfied, might conduct an investigation. If the FCC still is not satisfied with the station's equal employment opportunity, or EEO, efforts, it could begin proceedings to revoke the station's license. The National Black Media Coalition had asked the commission to deny license renewals to 19 TV stations because of deficient EEO efforts." Ah, for the good old days when all the television stations were black and white!

Another article shows efforts being made to bring satellite television to a few jungle villages in Peru. The article centers in Huaccana, about 200 miles southeast of Lima. "Courtesy of a ruddy-faced, white-haired Irish Catholic priest from Boston, Huaccana has been wired for a cultural explosion. Like the nearby town of Ocobamba, where Father John Pashby's parish is headquartered, this mountain village will soon be able to pick up television broadcasts ranging from Soviet news to Chilean telenovelas and westerns." The key to the town's new connection - a gleaming, sipping 30-foot-diameter satellite antenna appears to be firmly in place. With that, and a microwave transmitter made in South Miami for government sales, a revolution may be at hand, Pashby said. "Nothing gets in the newspapers, no television, if [the peasants] have a radio, it's to listen to

Huayno [Indian] music; when the news comes on, they switch the station. Education is a total failure. Family income is probably about \$300 a year."

"Their attention riveted, Pashby is convinced that television can be used to teach villagers elemental but crucial skills that could help wipe out curable diseases, cut back rampant infant deaths from diarrhea and double, perhaps triple, crop yields."

"Then again, Jerry Pashby, or 'Padre Jeremias' as the husky, 54-year-old cleric is known in these parts, did not just dream up his antennas and write a few checks on the weekly parish collection. In Huaccana, Pashby hauled in materials for the dish, rode his motorcycle the dozen-odd miles and 5,000 vertical feet up what's left of the road from Ocobamba, wired a small gasoline generator to a car battery and the battery to his tools, and built it." "We made the first one with a screen, and everybody thought the padre was loco, recalled parish aide Henry Jose Ccellocascca, 18, who was there at the creation. 'He couldn't get anything.' Prototype 2, a parabola of corrugated tin roofing, hammered flat, captured enough of a signal to send Ocobambans on a shopping spree. Financed by savings, government farm loans and church bingo pots, 30 TV sets have already popped up in and around the village." (Sounds like they must've tuned in Home Shopping Network. -wbf)

"With last year's third dish, Ocobamba can now simultaneously pull in two black-and-white feeds from more than a dozen international satellites. Solar power cells, the latest acquisition, will soon charge the car batteries with which the locals run their sets. Pashby first began to explore the possibilities of television in the area as satellite antenna prices fell during the late 1970s. The technological key to his backyard network, however, may have been the compact transmitter developed later by Nic Messemaker, the Dutch owner of a South Miami electronics firm, Hawkeye Industries. Messemaker normally sells the cigar box-sized device to police, military and other services of the U.S. and foreign governments for video surveillance. But with a linear amplifier, he said, the device can be set up to broadcast five or 10 miles."

**BOB SEAMAN** (Hazleton PA) writes, "We recently were on vacation in Florida (Tampa & Orlando areas) and I ran across this ad for WXFL." Odd, I didn't notice any tire reads on it. "Apparently they have installed a new transmitter and are not broadcasting in stereo. Also while watching the evening news on WTOG channel 44, St. Petersburg, they announced that they were having a new 1600 ft. transmitting tower constructed. They showed some videotape of the crew installing the tower."

"Not much new in this area. A few of the translators have been changed to different (lower) UHF channels by WVIA (ch.44, Wilkes Barre -wbf) and WYOU (ch.22, Wilkes-Barre -wbf)... I think one of the WYOU translators changed from channel 65 to ch. 19. Their announcements were very brief, so I may be mistaken." "I think that the proposed transmitter for WWLF ch. 56 should include Wilkes-Barre and Scranton in its coverage area because it is less than 20 miles from

Wilkes-Barre. They probably will still be a satellite of WOLF ch. 38 because WOLF's signal southwest of Wilkes-Barre is quite weak." My reason for raising the question about their continued satellite status was for the opposite reason. Since WWLF will reach into Wilkes-Barre, and since WOLF plans to reduce its power, why would their owners have any more use for WOLF?

**FORUM CANADA**

**BEN WILKIE** (York ME) writes, "I'd like to comment on the condition of television reception in Ontario, Canada! It appears to me, that they seem to be 'repeater happy' over there. I just wonder why there aren't ever any 'normal' applications for new stations being sought. Anytime there's ever anything new, it's to repeat CBLT 5 or TVO...ir CBC-French or something equally ridiculous."

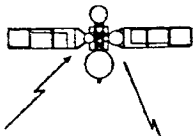
"Perhaps Walter Patton or J.J. Rosenberg can fill us in on why this is...or maybe tell us what it's like to be in central Ontario on a 'HOT' DX night, while seeing 60 different UHF signals...ALL playing the same programs! I'd like to know how northern Toronto viewers (like Rosenberg) feel about that new Ch.7 near Barrie, does that interfere with WKBW Buffalo? And why does Ontario NEED another GLOBAL affiliate? That spurs my next comment."

"Canada is the heaviest cabled nation in the world. So why so many repeaters of the same station every 20 or 30 miles? If people in Peterboro have cable, they get CICA 19 Toronto anyway...so why have Ch.18? And if 18 is receivable in Thornhill, then 19 must be in Peterboro. I just can't see the logic in all of this. Perhaps this is a diabolical plan by the CRIC to crowd the UHF dial with useless signals, so there won't be any intruding American signals to hamper the CBC's plan of monopolizing the airwaves! Food for thought EH! Then again it's not JUST Ontario, it seems to be done everywhere. In the Database, you have stations listed in the Maritimes, that repeat CHCH II in Hamilton, Ont! Can't they be original and think-up their own station, instead of relying on Ontario to provide them w/commercial infested American shows? I could go on, but I think I've made my point and I'd only be 'repeating' myself...and I wouldn't want to do that! I do have one final question. Does anyone know why Canadian call-letters can't go beyond the 'K' in the second letter...ie. CKVR?"

"Can you believe it, I just thought of something else. I keep hearing comments (from Canada) that Toronto has one of the most crowded FM & TV dials in North America! I mean really...what hog-wash. Compare the number of FM stations in Toronto, to that of MOST American cities. Now, I think I've said enough. Any comments or answers to any of the above statements would be appreciated."

I will restrict my comments only to the NATVDB mentioned above, and allow our Canadian members to comment on the rest of the letter. As mentioned on a few previous occasions, the column on stations repeated was a poor attempt on my part to show each station's source of network programming. I had hoped it would be a tool in identifying repeaters which unintentionally repeat other stations on the intended input channel. In reality, it's just like saying that all the NBC affiliates in the Eastern and Central time zones repeat WNBC in New York. Those source stations include microwave relay, cable, and ANIK satellite.

# SATELLITE NEWS



GEORGE W. JENSEN  
4604 Anntana Avenue  
Baltimore, MD 21206-9220

Several items to report this month. Arianespace is still on hold. Telecom 1B has suffered outages causing several European users to switch to other satellites, with TV Sat still operational.

On the domestic front - a new service called YOU-TV (Health Television) will appear by April 1st on Satcom 3 - XPDR 19. On Satcom 4 - XPDR 7 a most unusual subcarrier has appeared - The Radio Network of the Nicaraguan Resistance. I don't know its precise frequency, but it is the first on the dial so to speak.

For the remainder of the column I plan to give a satellite by satellite rundown of the current offerings. an "X" means VCI encoded

SATCOM 5 - Aurora - 143 W  
Feeds and telephone circuits on most channels  
24 - Alaska Satellite Project

SATCOM 1R - 139 W  
1 - KTVT - Dallas/Fort Worth X  
2 - KUSA - Denver, Colorado X  
4 - KCNC - Denver, Colorado X  
5 - WSBK - Boston, Massachusetts X  
6 - KMGH - Denver, Colorado X  
7 - Prime Ticket - Los Angeles, California  
8 - NBC - Full Network Feeds - East  
10 - HSE - Home Sports Entertainment X (testing)  
12 - KRMA - Denver, Colorado X  
14 - KWGN - Denver, Colorado X  
16 - KTLA - Los Angeles, California X  
17 - 3 Angels (Religious)  
18 - Worldnet - U.S. Information Agency and Latin American feeds  
20 - KDVR - Denver, Colorado X  
24 - United Cable of Denver and KUBD - Denver, Colorado (in clear)

GALAXY I 134 W  
1 - HBO X  
2 - Nashville Network  
3 - WGN - Chicago, Illinois X  
4 - Disney Channel X (testing)  
5 - Showtime - East X  
6 - Univision - Spanish  
7 - C N N X  
8 - C N N Headline Service X  
9 E.S.P.N. X  
10 - The Movie Channel - East X  
11 - C B N X  
12 - Request TV (Pay-Per-View) X  
13 - Country Music TV  
14 - The Movie Channel - West X  
15 - WWOR - New York, New York X  
16 - Showtime - West X  
17 - P. T. L.  
18 - WTBS - Atlanta, Georgia X  
19 - Cinemax - East X  
20 - Galavision - Spanish  
21 - U.S.A. Network - East X  
22 - Discovery Channel  
23 - H. B. O. - East X  
24 - Disney Channel - West X (testing)

SATCOM 3 131 W  
1 - The Fashion Channel  
2 - The Learning Channel  
3 - Trinity Broadcasting Network  
4 - F.N.N.  
5 - Shop TV Network  
6 - Tempo Television  
7 - ESPN feeds  
8 - Q V C Shopping Network  
10 - U.S.A. Network - West X  
11 - feeds  
13 - HBO - West X  
14 - C N N feeds  
16 - Travel Channel  
17 - Lifetime X  
18 - Reuters Teletext encoded  
19 - YOU TV  
20 - Black Entertainment Television  
21 - FAILED TRANSPONDER  
22 - Home Shopping Club  
23 - Cinemax - West X  
24 - Arts and Entertainment

A S C I - 128 W  
has had occasional video, but nothing on C-Band at this time

TELSTAR 303 - 125 W  
all permanent users (KTVT, Country Music TV) have moved off this bird.  
It is beginning to light up however with numerous sports feeds

WESTAR 5 - 122.5 W  
1 - New York Racing and other feeds some encoded  
2 - Dr. Gene Scott  
8 - Pro-Am Sports Network  
much of the rest of the satellite is used primarily for Group W feeds and others

SPACENET I - 120 W  
3 - SecceTV X  
5 - Christian Television Network  
11 - Hospital Satellite Network Encoded  
15 - A C T S  
16 - Univision and Televisa feeds  
17 - Satellite In-Store Music  
18 - American EXXXtasy X  
21 - Baptist Television Network

MORELOS I - 113.5 W  
2 - XHMT - Mexico City  
6 - feeds  
8 - XHDF - Mexico City  
10 - XHGC - Mexico City  
12 - feeds  
13 - Mexico Relay San Diego stations and Tijuana  
14 - XEW - Mexico City  
11 - COLLEGE CLASSES - IN ENGLISH - LOCATION ?

ANIK D - 104.5 W  
1 - feeds  
2 - TSN Sports encoded  
3 - feeds  
4 - Global Television feeds  
5 - feeds  
6 - Much-Music  
7 - CBC feeds  
8 - CHCH - Hamilton, Ontario encoded  
9 - WDIV - Detroit, Michigan - encoded  
10 - WXYZ - Detroit, Michigan encoded  
11 - CBE feeds  
12 - feeds  
13 - Feeds  
14 - TCTV - Montreal, Quebec encoded  
15 - CBC - French network  
16 - CBC - House of Commons - French  
17 - feeds

- 18 - CITV - Edmonton, Alberta - encoded
- 19 - CBC - North - Atlantic
- 20 - CBMT - Montreal, Quebec
- 21 - WTVS - Detroit, Michigan encoded
- 22 - CHAN - Vancouver, British Columbia = encoded
- 23 - WJBK - Detroit, Michigan - encoded
- 24 - CBC - House of Commons - English

WESTAR 4 - 99 W

many feeds on this bird - specifically -

- 6 - National Christian Network
- 10 - CNN feeds
- 13 - JISO - feeds to Japan
- 15 - PBS - A feeds
- 17 - PBS - B feeds
- 18 - HBC - Telemundo
- 21 - PBS C feeds
- 23 - PBS - D feeds NOTE - all PBS feeds but one will encrypt with VCI in Fixed-key mode permanently

TELSTAR 301 96 W

mainly numerous feeds with specifically:

- 2 - CBS
- 4 - ABC - Los Angeles
- 7 - CBS
- 9 - WOLD syndicated feeds
- 10 - ABC - East
- 11 - CBS
- 12 - ABC - Los Angeles
- 14 - Fox - West
- 23 - WOLD
- 24 - Fox - East

GALAXY 3 - 93.5 W

- 2 - Racing feeds - encoded
- 5 - Pay-Per-View service ? X
- 8 - Home Shopping Club
- 9 - C V N - Shopping Club
- 10 - E W T N - religious
- 11 - Mind Extention University
- 13 - Weather Channel
- 14 - C-Span II - U.S. Senate
- 15 - Video-Hits I X
- 16 - Home Premier X
- 17 - M T V X
- 18 - Viewers Choice II X
- 19 - Nickelodeon - East X
- 21 - Viewers Choice I X
- 22 - Nickelodeon - West X
- 23 - National Shopping Club
- 24 - C-Span I - House of Representatives

WESTAR 3 - 91 W

no permanent programming - is being phased out of operation

TELSTAR 302 - 85 W

primarily telephony and other services with a number of feeds for the CBS network - many using the VC I system

- 10 - ABC - Los Angeles - West
  - 15 - CBS feeds
  - 16 - CBS feeds
  - 17 - CBS feeds
  - 18 - CBS feeds
  - 20 - CBS programs - East
  - 24 - SCOLA - foreign newscasts in NTSC daily - 8AM - 5 PM
- Note** - Baseball backhaul feeds will use the VC I system. Your local TV station planning to carry highlights from these feeds will have to purchase a decoder for 1 or 2 thousand dollars and pay \$250/month for authorizations.

excuse the change in type, but the other one died.

SATCOM IV - 82 W

- 1 - Home Shopping Club
- 2 - Bravo - evenings - RAI-USA afternoons - a shopping channel at other times
- 3 - Gospel Music Network/Rock Christian Network
- 5 - American Value Network
- 6 - Telshop - Madison Square Garden Network
- 7 - Liberty Network
- 8 - Program Guide
- 9 - Sportsvision
- 10 - American Movie Classics X
- 11 - Home Sports Entertainment X
- 12 - New York Sports Channel
- 13 - N ESN - New England Sports Network
- 14 - Fashion Channel
- 15 - Shop At Home
- 17 - Movie Time
- 19 - WPIX - New York, New York X
- 20 - Prime Ticket
- 21 - Nostalgia Channel
- 22 - Home Team Sports
- 23 - Silent Network/Sports Channel
- 24 - Playboy X

WESTAR 2 - 78 W - INACTIVE

COMSTAR 3 & 4 - 76 W - Testing occasionally

GALAXY 2 - 74 W

- 1 - University of Virginia
- 2 - Telecast - Pay-Per-View - encoded
- 4 - First Run - Pay-Per-View - encoded
- 10 - TuXedo Network - X
- 11 - NHK Relay

racing and other feeds are found on many other transponders

SATCOM 2R - 72 W

- 2 - WBBM - Chicago, Illinois X
- 4 - WABC - New York, New York X
- 12 - WXIA - Atlanta, Georgia X
- 13 - N.A.S.A.
- 22 - Armed Forces Television (AFRTS)

other transponders are beginning to light-up with sports and news feeds

SPACENET 2 - 69 W

this satellite used to be primarily telemetry feeds, etc, but is also beginning to light-up video-wise

- 1 - Telstar II - PPV X
- 3 - Telstar I - PPV X
- 9 - SelectTV X
- 10 - Shipboard Satellite Network - late evenings
- 11 - Telstar Channels barker channel
- 23 - Telstar III - PPV X

Intelsat V-F - 53 W

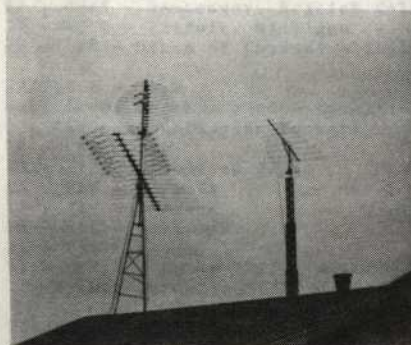
- 1 - Argentina Cable - B-MAC encoded - PAL color
- 3 - Argentina - Horse Racing - PAL color
- 12 - News feeds from England (24 hours/day) - PAL - color
- 18 - TV Peru and Pantel - Lima, Peru - NTSC color
- 24 - ATC - Buenos Aires, Argentina - PAL-color

INTELSAT VA F11 - 27.5 W

- 1 - BrightStar London - news feeds 24 hours per day - NTSC & Pal
- 9 - Channel 5 - Caracas, Venezuela - NTSC
- 11 - NBC feeds - London - NTSC
- 13 - ABC feeds - LO'DOM - NTSC - is what is relayed on Galaxy 2 - XPDR 11
- 15 - CBS London
- 20 - Chile? - NTSC

That's all for now - You may wish to keep this for updates in future columns. With everybody's help - I hope to do similar with audio-subcarriers in a few months. '73's

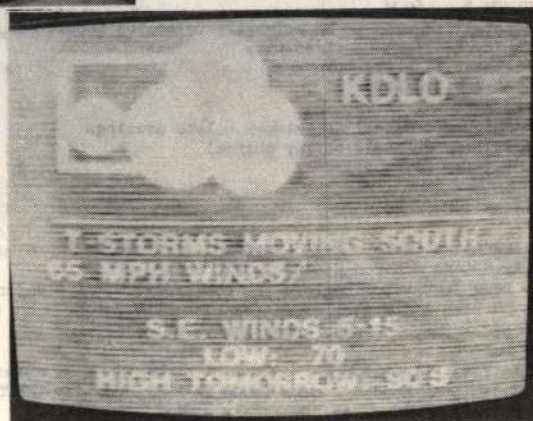
# SEND 'EM IN...



## PHOTOS OF YOUR DX SET UP...



## AS WELL AS YOUR DX.



SEND THEM TO...  
PHOTO-NEWS  
12284 NICE ROAD  
AKRON, NY 14001-9529

# WTFDA

## CLUB SUPPLIES

AVAILABLE NOW: QSL  
REPORT FORMS...BOXERS  
(TO HOLD YOUR V.U.D.'S)  
NORTH AMERICAN TV STA-  
TION DATA BASE...TRANS-  
LATOR-L.P.E.V. LIST...  
BACK ISSUES OF VHF-UHF  
DIGEST...SEND A S.A.S.E.  
TO CLUB HEADQUARTERS  
FOR A FREE CATALOG

WTFDA - P.O. BOX 514 -  
BUFFALO, NY 14205-0514