

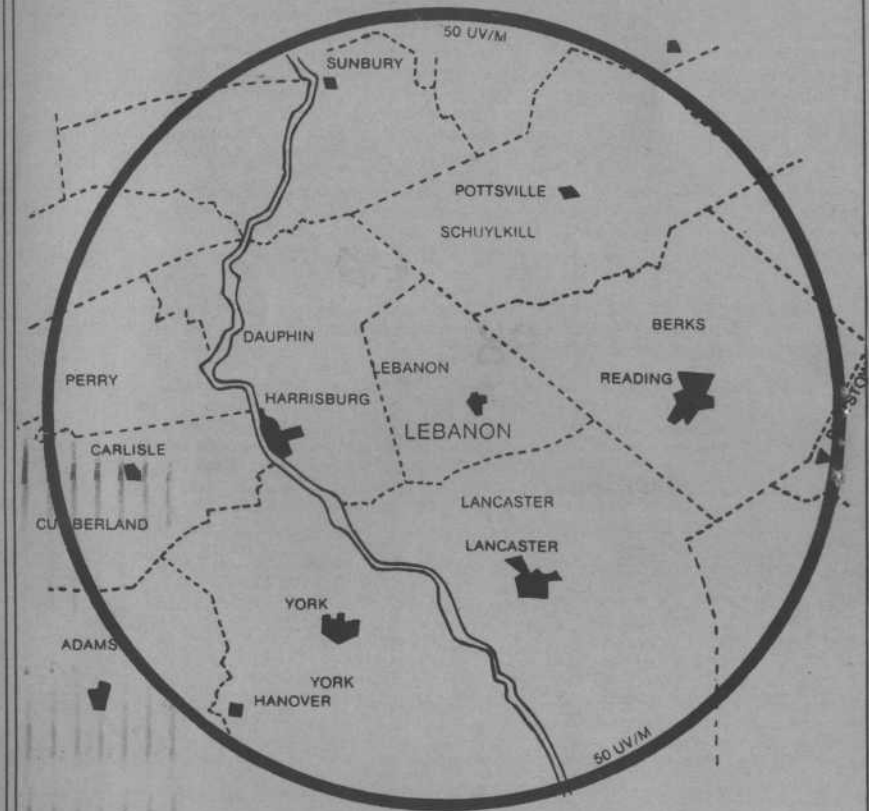
Vhf-Uhf DIGEST

The Official Publication of the Worldwide TV-FM DX Association

APRIL 1991

LEBANON BROADCASTING COMPANY
P.O. BOX 1270, LEBANON, PENNSYLVANIA 17042
(717) 272-7651

LITE HITS. LESS TALK



WORLDWIDE TV-FM DX ASSOCIATION
POST OFFICE BOX 514-BUFFALO, NY 14205-0514-U.S.A.

THE WVF-UHF DIGEST IS THE OFFICIAL PUBLICATION OF THE WORLDWIDE TV-FM DX ASSOCIATION. W.T.F.D.A. IS A NON-PROFIT ORGANIZATION, A MEMBER CLUB IN THE ASSOCIATION OF NORTH AMERICAN RADIO CLUBS, AND IS GOVERNED BY A FIVE-PERSON BOARD OF DIRECTORS, COMPOSED OF: BILL FABER, MICHAEL HOGAN, DAVID JANOWITZ, STEVEN SPRACHMAN, BILL THOMPSON. PERSONS CONTRIBUTING THEIR EFFORTS FOR THE WORLDWIDE TV-FM DX ASSOCIATION MUST DO SO WITHOUT ANY MONETARY COMPENSATION. ALL MEMBERS, INCLUDING BOARD MEMBERS AND EDITORS, ARE REQUIRED TO PAY DUES. DUES AND ALL OTHER REVENUE COVER PRINTING, POSTAGE, AND OTHER CLUB EXPENSES.



first class mail

Vhf-Uhf DIGEST

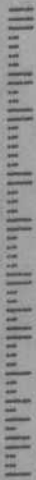
The Official Publication of the Worldwide TV-FM DX Association

OPINIONS EXPRESSED IN THIS PUBLICATION ARE THOSE OF THE INDIVIDUAL CONTRIBUTOR AND DO NOT NECESSARILY REFLECT THE VIEWS OF THE PUBLISHER OR BOARD OF DIRECTORS. WE RESERVE THE RIGHT TO EDIT MATERIAL, TO MEET PUBLISHING STANDARDS. UNLESS PREVIOUSLY AGREED UPON IN WRITING, ALL MATERIAL SUBMITTED FOR PUBLICATION IN THE WVF-UHF DIGEST BECOMES THE PROPERTY OF W.T.F.D.A.

REPRODUCTION OF MATERIAL FROM THE WVF-UHF DIGEST WITHOUT PERMISSION OF W.T.F.D.A. IS PROHIBITED. INDIVIDUALS AND OTHER ORGANIZATIONS ARE GRANTED SUCH PERMISSION PROVIDING PROPER CREDIT IS GIVEN TO THE SOURCE.

ANNUAL DUES - UNITED STATES: \$17
CANADA: \$18
OUTSIDE NORTH AMERICA: \$27
NAME CHECK OR MONEY ORDER PAYABLE TO WORLDWIDE TV-FM DX ASSOCIATION.

11/91
WILLIAM N NOLLMAN
35 NYE ROAD
GLASTONBURY CT 06033



From The STAFF

THE "SEASON" ARRIVES...For FM and TV DX chasers, it's a whole new ballgame. Yes, baseball is back in season--but so is VHF/UHF DXing! April often brings showers, but also features the return of warmer and more stable high pressure weather systems, and of course, the resulting tropo DX. Remember, too, that this is a good time of the year to check your antenna system thoroughly and make any necessary changes or improvements soon; E-skip DX will start rolling in a month or so!

LOOKING FOR BACK ISSUES?...Well, we've got them, going back to December of '89. They're \$2.00 each (price includes postage) and can be ordered from: WTFDA Supplies, c/o John Ebeling, 9209 Vincent Avenue South, Bloomington MN 55431-2157.

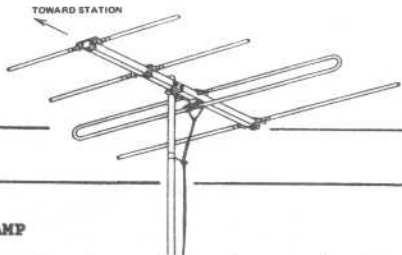
LOOKING FOR LOST ISSUES?...Most members within North America should be receiving their VUD copies no later than mid-month. We usually mail out each month's issue on or about the 5th. Recently, we've received word that some WTFDAers are experiencing delays. We find that this often happens because we don't have correct address information. Check the label on your VUD--if the wrong zip or postal code is being printed on it, it may be the reason your VUD gets bounced around the USPS more than it should. There also seems to be a greater number of VUDs damaged in the mail with each month; USPS sources tell us this is partially due to their increasing use of automation and that the damage should subside as they get used to newer machines and procedures. Nevertheless, this kind of thing is never very pleasant when it happens to you--and we want to hear from you when it does. If and when you receive a defective VUD or one damaged in the mail, please drop us a line--we'll do our best to replace it, as long as supplies last. If possible, send along the cover with your address label as it was received. When necessary, we can use it as evidence to make a complaint to the Postal Service.

THE ENVELOPE, PLEASE?...On the same topic as above, we've received several suggestions that the VUD should be mailed in envelopes each month, "like most of the better newsletters," in the words of an enthusiast who receives about twenty amateur radio, astronomy, and DX club publications monthly! Since the VUD has a magazine-style format, this would increase expenses. Would you prefer to have your VUD mailed in an envelope? We'd appreciate hearing from members on this.

TABLE OF CONTENTS

TECHNICAL TOPICS: Notes on a handy little amp, and a great UHF trap...	3
FCC FM NEWS: Midwest DXers try phase-nulling; LOTS of station news...	4
SATELLITE NEWS: ABC starts to scramble news feeds.....	12
WESTERN TV DX: Extraordinary was the word for February.....	13
EASTERN TV DX: January and February featured suprise DX.....	16
SOUTHERN FM DX: Some tropo and E-skip highlights February.....	20
TV TIME TUNNEL: The original U.S. TV channels--as they were in '45!..	21
PHOTO NEWS: Snapshots of rare NJ-to-northern OH DX, and a NH UHFer..	22
SPECIAL REPORT: A new antenna design comes out of the closet!.....	23

Thanks to PHOTO NEWS column editor Dave Nieman for this month's cover.



TECHNICAL TOPICS

1. EXPERIMENTING WITH A SMALL PREAMP

Recently while flipping through a mail order catalog in search of RF connectors, I came across an inexpensive "in-line amplifier for CATV use." Here are its advertised specs:

Bandwidth: 5-950 MHz
Gain: 11 dB
Maximum Input: 20 dB [sic]
Maximum Output: 31 dB [sic]
Noise Figure: 4 dB
Power Requirement: 15 VDC
Dimensions: 2 1/2 L x 5/8 D

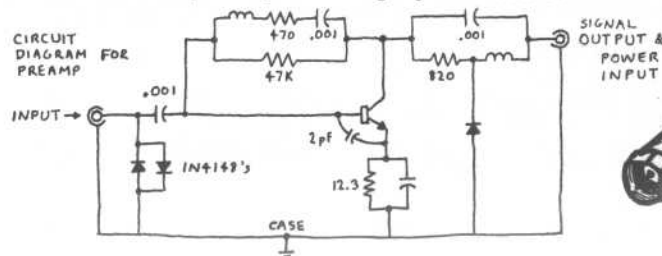
This seemed like it could be an awfully handy little item to have around, so I ordered one. (TENMA #33-917 for \$18.50 from MCM Electronics, or ARCHER #15-1117 for \$17.95 from Radio Shack) The unit could be used to give that extra little boost when routing cable or TV signals around the house or copying tapes (DX tapes, of course!). Or, the attached dc wall transformer could be cut off and a 12V car lighter plug attached for use on DXpeditions. For scanner users, it would be well suited for use with a low-gain antenna such as a whip or a discone. I use it with indoor antennas to get FM and UHF stations to come in better. This model is a single stage circuit having just enough gain to overcome line losses, etc. without overloading or introducing a lot of noise.

The amplifier is in a cylindrical case, with a female "F" connector on the output end and a male "F" on the input (it could be screwed directly onto the balun on your antenna). Power is carried through the download by using a "power injector" supplied with the amp. This is a small box with a 6" RG-59 pigtail and male "F" for your TV's antenna jack, a female "F" for the download, and a DC power input from a plug-in wall transformer.

I tested this amp in the lab and found the following for my unit:

Bandwidth: 5-800 MHz (-3 dB)
Gain: 10 dB (+2, -3 dB)
Noise figure: not able to verify
Power input for 1 dB gain compression: -4 dBm (173mV @ 75)
3rd order intercept point: +20 dBm (-10 dBm two tone input)
VSWR: <2.0:1 from 5-700 MHz (input port)
<1.7:1 from 5-1000 MHz (output port)
Power consumption: about 20 mA @ 15 VDC

Not bad for under 20 bucks. I definitely would not recommend this on a high-gain outdoor antenna system, but it is useful for indoor antennas and low-gain outdoor antennas. The compression point of 173 mV is easily reached in a strong signal area, even with rabbit ears, so some care must be exercised so that the spurs and noise do not overwhelm the signals you are trying to receive.



2. THE WINEGARD UT-2700 TRAP

Seems like tunable traps are awfully expensive these days. I had planned to order a C.M. 7206 (the one in a metal box with two vernier dials), but my unfriendly local distributor wanted \$120 and special order fees. The two-stage mast mounted models (C.M. 0503 and 0504) were \$53, and only covered FM and VHF in bands; no UHF.

Fortunately, a DX'er in nearby VA, Eric Voytko, located a very similar Winegard model that covers UHF--for only \$36. He was kind enough to send me one to test out, so I did. This model is designed to mount on a mast and is reasonably well constructed with a water-shedding plastic case. The manufacturer says the trap "may be tuned over the frequency range of 470 to 810 MHz. The UT-2700 features two separate traps that may both be tuned to the same frequency to reduce it -15 dB or to separate frequencies to reduce [each of] them 8.5 dB."

I was a bit dismayed at first because of the apparent lack of shielding. However, Winegard cleverly assembled the unit to provide some shielding without incurring the cost of a metal box. The filter circuit is etched into double-sided board, and its ground plane is soldered through 1/2-inch standoffs to an unetched (that is, solid copper) board with two holes drilled to accommodate a screwdriver for tuning. This entire sandwich is more or less self-shielded and is merely pushed into the plastic case and held in place by small tabs.

In the lab, I found the UT-2700 could be tuned anywhere from 400 to 1050 MHz, and that its performance exceeded the manufacturers' claims considerably. Plot 1 shows insertion loss versus frequency, and gives a rough visual idea of the sharpness of the notch. Below 500 MHz, passband insertion loss is less than 0.5 dB, important if the trap is being used on an all-band VHF-UHF TV antenna or if that antenna is also feeding a scanner. Through the TV range, loss starts at about 0.5 dB at 470 MHz (channel 14) and gradually increases to about 0.75 dB at 900 MHz (channel 69). VSWR is excellent across the entire range, never exceeding 1.45:1.

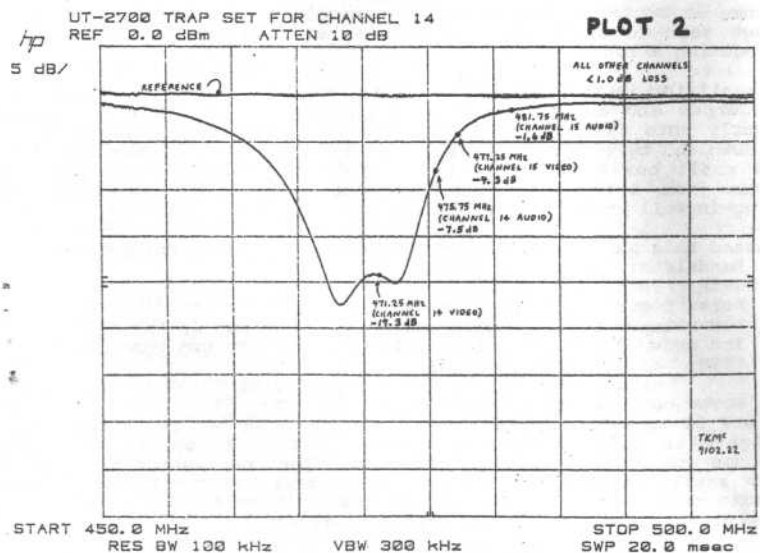
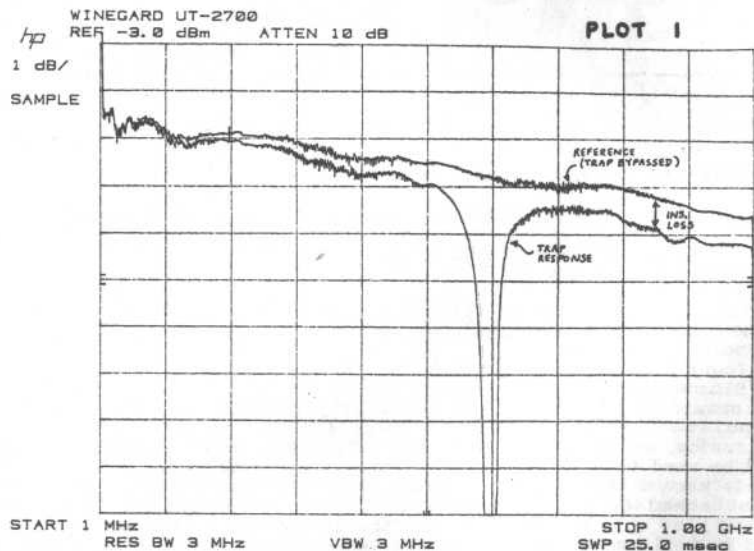
Each stage of the UT-2700 has a single tuning capacitor adjustment, and is fairly touchy since a 180 degree turn tunes the entire 600 MHz bandwidth. No big problem, however, since TV channels are 6 MHz wide. A table appears on the next page which gives passband insertion loss, notch depth, and notch width versus frequency. Notice that the notches become noticeably deeper (and somewhat wider) as you tune them higher in frequency. A single trap has a notch that is 9 dB deeper at channel 69 than at channel 14.

When one tries to get both notches to line up on the same channel, it is possible to get up to 40-45 dB of attenuation! (Enough to make that pesky local UHF powerhouse--whose tower lights you can see out your window--seem like it's 50 miles away.) In practice, it is difficult to get the two notches to line up perfectly on top of each other. Plot 2 shows more typical results--this was my best attempt to get a single notch at channel 14. However, tuning becomes easier the higher you go in frequency. For the higher channels it is not too hard to get the two traps onto the same frequency to create a 30-40 dB null. Plot 1, for example, shows where I set both traps onto 600 MHz. Of course, many DX'ers may find the trap is more useful for killing off two separate, local channels anyway. In many cases attenuating two powerful locals by just 12 dB or so may be enough to kill all of a DX'ers image problems.

PERSONAL NOTES...

Thanks to Mr. Voytko for the trap. If you have something like a preamp or a balun or something that you would like to see a real detailed review on, think about sending me one for a couple of weeks like he did with the UT-2700. I will print 'em as long as there is interest. (Please don't send any equipment like a TV or tuner.)

73 de Tim McVey, 10338 Hickory Ridge Road #537, Columbia, MD 21044



UT-2700 SPECIFICATIONS

Tunable frequency range: 400-1050 MHz
VSWR over this range: less than 1.45:1 (both ports)
Insertion loss in passband: less than 0.8 dB

Frequency	Ins. Loss	Notch Depth	Notch BW, 3dB	Notch BW, 10dB
400 MHz	0.35 dB	12.5 dB	2.3 MHz	10.2 MHz
500 MHz	0.40 dB	15.0 dB	2.6 MHz	9.6 MHz
700 MHz	0.60 dB	17.4 dB	3.1 MHz	10.0 MHz
900 MHz	0.75 dB	19.0 dB	3.7 MHz	11.7 MHz
1000 MHz	0.80 dB	21.0 dB	3.8 MHz	11.9 MHz

FM Co-Channel DXing Improvements and Readers' Reports

Last month's column carried a brief item about Andy Bolin investigating the possibility of tuning out nearby stations on the same channel which might be affecting DX of a station farther away, even on the same antenna bearing. Well, since last month, I have converted from a skeptic to 100% on Andy's side. The system does work, and I am convinced it is as big a breakthrough for the FM DXer as selectivity improvements have proven to be, as well as the efforts by some in the club to defeat the tuning steps (or at least narrow that tuning to 100 kHz or smaller steps) in digital tuners and receivers.

Quite by accident I discovered that two antennas can interact favorably (or unfavorably). By connecting transmission lines to a splitter, but "tampering" with the line coming from the smaller antenna used to "null" out offending stations with variable capacitance, you can actually "tune" out the station you don't want to receive, or reduce interference from an unwanted background station.

I am using a vertically-mounted dipole which is not rotatable and a yagi, rotatable, both on the same tower. Better results would be from a yagi, horizontal and rotatable on its own tower an FM wavelength or two removed from the regular antenna. However, even with this primitive setup, I can tune in 90.9 Wausau WI and avoid interference much of the time from the much-closer WIRR *90.9 Buhl MN. I have nulled out 94.1 Little Falls MN to hear Atwater MN in the same direction, and *88.5 KFAI Rochester MN can often be pulled out of the mess created by KBEM Minneapolis and KCRB Bemidji MN. The receiver area is a tangle of wires, 300 and 72-ohms, as well as three antenna switches to provide a more pure signal as well as a signal influenced by the output of the two antennas and variable capacitor. The variable capacitor is actually contained in an antique Turner FM-TV (VHF) signal booster, and often by tuning way off the FM band, near channel 4 TV, I get the best results. The booster can even be turned off and still do its thing, but for more pronounced nulling I can turn the booster on and switch one of the antennas through it and reduce the main system gain. I think it will be fun (and complicated) to use when skip comes in. John Ebeling stopped by and was aghast, saying "I don't want anything in my system to reduce gain. Every time you add a connector you are reducing gain by half a dB." The system does not seem to help selectivity; when I DX next to locals, it is best to run the antenna straight into the tuner, bypassing the co-channel tuning equipment. Too, straight attenuation is not what Andy and I are doing. If it were attenuation, nulling out semi-locals and other offending signals would be easy. My system works best when the ratio of offending to desirable signal is quite close.

This technique makes use of phase differences between the two antenna systems. I believe to be most effective, transmission lines should be of equal length, which mine

aren't. A ham sent an article by FM DXer Joe Eisenberg of Lincoln NE, "FM Broadcast Band Interference Filter," showing a three-stage filter to null out locals and help clean the band of cross-modulation. If anyone wants a copy of the article, send 50¢ for postage and copying. This may or may not help in the phase cancelling process; if it doesn't, you might at least learn how to null out some of your local signal overload. Now to what Andy Bolin writes:

"It sounds like you have begun to understand what phase shifting signals can do! I have no doubt when you turn off your booster you can still cast nulls. Do you understand why? You've got two horizontally positioned antennas on your roof. A signal hits one antenna at a different time interval than the other antenna. If you have an attenuator on the antenna with the most gain to match its signal amplitude to the other antenna, then run your rotor, you may be able to cause a 180° phase shift since you have the two antennas coupled together. You now see what happens with two signals 180° out of phase when hooked to your receiver, a null! Since you only have one rotor, you won't get much use out of phasing but you are doing the same thing as Bob Hawkins' friend was doing. You could get some control over phasing by simply changing the length of the coax on your phasing antenna. Of course, splicing different pieces of coax in your line isn't very functional during skip! When I saw Bob's friend using this trick, I realized what was needed was a mechanical way to tune the phase—a device you could spin a control on and watch signals go in phase or out of phase, hassle free!

"I've spent over a year researching this idea and I think it has the greatest potential of anything I've ever seen for the DXer. The uses are almost endless. As fate would have it, an ad from Microwave Filter Co., Inc. of East Syracuse NY turned up about six months ago in a CATV trade magazine. This is the first time I have seen an ad for any kind of phase box!" [The ad is for the 2903 Co-Channel Eliminator; call Microwave Filter Co. at (800) 448-1666 for technical assistance.]

Andy thinks that a phaser needs two or more stages, unlike the single stage model sold by Microwave Filter. My thinking is one stage would be enough; if you need more intense nulling you might be able to add a third antenna phased into the line, possibly using even an amplified indoor antenna and moving that about. Andy goes on:

"This company is charging \$530 for their unit. I have some two stage prototypes in the field now for \$125 and could cut the price further if I bought the parts in lots of ten. I think my price is a rip-off price, but I can't find parts at what I think is a fair price. I wonder how many companies are going to start sellingphasers?

"Something else to think about. If a good two-stage phase box can put a signal out of phase, it could therefore put a signal in phase. I'm sure you've read Winegard and other companies' literature on horizontally stacking antennas. Even though the reason for horizontally stacking is to improve directivity, you know from reading such literature that you end up with an overall

gain of around 1.2 dB with one wavelength spacing. Since you're going to be using separate antennas on separate rotors you would probably have well over two wavelengths spacing. So if you were to peak (instead of null) the signals with the phase box you seem to end up with over 2 dB gain! Since I have the ability to tune signals from 180° out of phase to in phase, I don't think any further improvements on the box can be made. But I need time to spend working with the antenna spacing to see what works best, if anything. My next trick is to horizontally stack two Probe 9s on a common rotor to see how that works (assumed not as good)." Andy is looking at UHF as a good band to try TV phase shifting, since the wavelengths are so short. TV DXers eat your hearts out on this:

"What will happen if you take two little UHF antennas, nail them to a sawed-off broom handle, stick it up on the roof and run two downloads to a phaser? I don't even need to try it. I can guess it's going to be good-by locals! Look what's going to happen at the low end of the TV dial. The wavelength there is so long it's not practical to horizontally stack. Once again with a TV antenna at each side of the house hooked to a phaser, you should be able to put a null almost anywhere you want it!

"The only drawback to phase shifting on FM is you will need to modify your S-meter circuit for tight signal readings on locals, or you won't be able to find the null . . . On TV, the nulls aren't hard to find, since the picture starts to ghost a little before you hit the null. I think phase shifting is the greatest, wildest, DX stunt I've ever seen! Keep with it; you'll see what you once thought were miracles! Perhaps on FM, you can detune and note the local losing strength, or listen for the "chugging" that betrays a weak station threatening your receiver's capture ratio circuitry. Bob Hawkins, who Andy refers to, is an FM DXer and chief engineer of Emmis Broadcasting's WENS Indianapolis, and a subscriber to my FMedial newsletter. If you have further questions you might write Andy at 709 Lincoln Ave., Charleston IL 61920, and include an SASE to make his replying easier. I am not sure if he is selling his phasers or not, but that is something you might ask him about.

Now after that truly exciting news in DXing, it's on to other member mail. Tom Bryant at WSM-FM 95.5 Nashville sent a mention about WSM asking the FCC to rule against Capstar Communications, which has been running WWTN monophonic 99.7 Manchester-Nashville, WSIX-FM 97.9 and, until recently, WSIX AM (now sold and religion). WSM is charging that those stations are violating FCC rules about station management and ownership in the same market. Tom muses, "There are plenty of actions involving absentee ownership, but this is different insofar as the absentee owners have contracted with a local licensee to conduct the business of four different operations." WWTN was recently off the air after wind had blown a microwave dish into its transmission line. By now it should be fully DX ready.

W. R. McIntosh sent news about KQLZ 100.3 Los Angeles, still "Pirate," but which sent Scott Shannon down the electronic plank. Scott's still syndicated, so DXers might yet hear him; going back to NY City? KLON Long Beach now on with 8 kw, but they are allocated 30 kw; they had a problem with KUCR Riverside. I'm not sure if 8 kw will be permanent; perhaps a DXer in the area can call KLON to try to find

out. KUCR is going to 750 watts h.v.; 89 m, also on 88.1.

Ronald Percue sent word on WLOL 99.5 Minneapolis disappearing; it's now noncommercial KSJN, still with a Muzak SCS. "I have taken 99.5 out of 'Memory' on my Realistic STA-111 receiver just to make room for KQLW [102.5 Wabasha MN-S, 'Power 98' (sic)] as with other rock music stations on my stereo! . . . I guess the FCC denied the three petitions to deny the WLOL transfer to MPR." About the WLOL disappearance, John Ebeling says, "Seems as if MN Public Radio has now decimated the long time WLOL (Land of Lakes) calls. First they took over the 1330 AM frequency; now the FM is gone as well! Found out my 'mystery translator' which I asked about last year. Seems that KUOO 103.9 Spirit Lake IA rebroadcasts KEEZ 99.1 Mankato overnights. An ID was given for both stations." John thought KLKS Breezy Point MN had moved from 95.3 to 104.3, but that station is not slated to move until May.

Nick Lombardi thinks, with my problems with an aging computer and IBM Composer, I should consider getting something more modern. "The one used to prepare the Northern FM DX column seems especially effective, and something like that would probably serve you well." Maybe Greg can share with us what kind of printer and computer he's using.

Mark Daugherty hadn't received the "FM Atlas" he ordered when he wrote, so a replacement book was sent Feb. 22. "I really enjoy your column in the VUD," he says. "I joined the WTFDA because of a plug in your last 'FM Atlas'—thanks! I'm not really a DXer (276 stations in first year from Columbus IN). I just love public radio stations. I agree with F. Merrill. I would also like to see formats listed by frequency. Another thought—WTFDA might offer a bibliography of useful articles on antennae, leads, amps, etc. As I'm sure everybody agrees it's hard to find nontechnical info relative to FM broadcast, not ham radio! I love experimenting, but don't really want to become an electrical engineer. Keep up the good work on your column and the 'FM Atlas.'" John Ebeling is handling club supplies, and he may have a list of back articles in the "reprint" service to send.

DXing with the benefit of more selective filters installed by Mike Bugaj is Steven Solomon of Hamden CT. The filters enable him to "DX any frequency, including 96.7, which before was impossible with WTIC-FM 96.5 at 90% signal strength with their transmitter about 10 km away at 50 kw! Now WQQQ (formerly WJAZ) in Stamford is common DX along with 96.3, WQXR-FM New York, which I hear with little interference. . . With the Yamaha TX-930 tuner I still have a little audio distortion from the narrow filters, and I would like to know if there is a way I can line up the filters so I get maximum selectivity with no audio distortion. I'm a big aircheck collector and from my East Hartford CT apartment I can hear and record clean airchecks from NYC, Poughkeepsie, Providence, Northampton MA and all of CT. The only antenna I have is a Radio Shack omnidirectional in the corner of my bedroom on the third floor of an apartment." He mentions hearing "WJJB" 100.9 in New Haven CT, which must be a pirate, and the 98.1 and 103.3 stations in NW CT remain off the air. I am not sure about lining up the filters for better audio response; it is an inexact

science, and when you reduce selectivity you might have to tolerate a slight increase in distortion or changed audio. Bill Nenjadly's previous articles in the VUD probably reflect the best we know at this point about how audio characteristics of a tuner change with the substitution of more selective filters. Alaska's Rod O'Connor sent an item about Nome AK getting a commercial FM allocation, which would give KICY-FM 100.3 some competition.

Gus Mancuso discovered that Hope Mills NC can't hope to be on 103.5 because of Dunn NC, so I checked and found that Hope Mills (WCCG) is being ordered by the FCC to move to 104.5. He wants frequency changes listed separately from power boosts, but, Gus, they are facilities' changes, and often the two go hand-in-glove. I talked to Robert Unmacht at the "M Street Journal," and we agreed it is hard to call it on frequency changers. Stations often change frequency before the FCC announces it; a case in point is Churchville VA now on 106.3 (from 106.7) and Luray VA on 105.7 instead of 106.3. You can DX those stations right now on their new frequencies! Bruce Hall, in last month's VUD, said he likes my FM Atlas maps, as he heard KYPG Girard KS on 99.1, and wouldn't have believed it had not the reference for this former 101.1 mhz station been printed on p. 59 with the notation "to go to 99.1." Gus discovered last summer the apparent confusion, which was cleared up in this column last month, about WHOV-WHRV, WHRO-FM in the Norfolk VA area. He heard those stations while dialing from Emporia VA. "One of the stations was soliciting reception reports, so I called. We talked about the frequency changes taking place. . . I wish I had more notes on the conversation. I'm guessing one of the three stations wanted a power increase, necessitating move to more 'open' frequency. Re: Ebeling 100 km spur. I claim record for longest spur, 6,400 km! Armed Forces Radio on 1107 kHz, heard on 1170, from West Germany," but, Gus, this isn't an AM or SW club; this is FM, and the "spur" or whatever it was, was DX on the 88 to 108 mhz band, albeit pesky DX!

"Looks like Boise State University is going after a student-run station

after all," muses Frank Aden, Jr. "More interference to DXing! It is almost impossible now." The station being sought would be at 91.5 with 4 kw at 787 m from Deer Point, site also of KJHY 101.9 Emmett-Boise, having moved from 101.7. Frank also confirms that the new KMCL 101.1 McCall is stereo. Paul Gaines still tries to DX in Detroit, but working seven days a week "driving for hire" doesn't give much time.

Chris Dunne has not only heard Bahamas "104-5 FM," but wants a digital tuner that gets even frequencies for such exotic DX as 106.2 in Bermuda and 88.8 in Guatemala; "Gem Radio," Montserrat on 94.4; "however, as far as I know, it has been off due to 'Hugo' in '89."

Now to two comments from Canadian readers. Saul Chernos received my radios' and electronics catalog and was aghast that it lists radios made by General Electric. GE should be boycotted, according to a pamphlet he sent, because it is a defense contractor which creates "dangerous, costly and unnecessary weapons, [is] contaminating the environment [and] manipulating government for profit." One point is that GE "hires as lobbyists the founders of the Committee on the Present Danger—a far right organization dedicated to warning the public of the 'growing Soviet military strength and the need to match it.'" For more information you can write INFACT, Nuclear Weaponmakers Campaign, PO Box 3223, South Pasadena CA 91031. Saul also sent a reprint from the Toronto Star, Aug. 24, 1989, saying that GE is America's third-largest maker of nuclear weapons. Although Saul finds the "FM Atlas" a "useful, professional piece of work," he takes issue with my catalog. "I find no fault in what you do; in fact, I applaud your work at boosting awareness about SCA. However, would it be possible for you to use equipment other than that made by General Electric? Enclosed is some literature to explain my concerns in greater detail so you'll understand exactly why I am asking you to consider not dealing with GE. I realize GE makes excellent radios—they also make many fine household appliances, some of which I have bought and used. Unfortunately, Bruce, GE also makes nuclear weapons.

"I first considered a letter to you about a year ago, but I thought the demise of the Cold War and the crumbling of the Berlin Wall might, in itself, bring about an end to the arms race. I also did not want to discourage you from your good work. However, recent events in the Middle East compel me to write to you. . . By manufacturing nuclear weapons, GE encourages war. Read the enclosed and you will find out about a boycott aimed at pressuring GE to get out of the weapons business and to 'bring good things to light' in a humane way. A serious plan to convert production from wartime to peaceful can be accomplished and would mean no loss of jobs.

"I don't wish to come across as some political know-it-all—I really believe that what GE is doing is wrong and must stop. I support INFACT's GE boycott because I believe, with cooperation with people like you, it can be effective and we can make this world a safer, saner place to live." Saul goes on to mention that he is hearing a French CBC station, which I suspect is the new CBOX 102.5 Ottawa, and the CKNX-FM relay on 104.9 in Meaford ON is on the air, as is the new gospel station, WMHI, 94.7 stereo, in Cape Vincent NY, serving Kingston ON. Regarding the GE boycott, I think Saul has a good point. But where does one stop? Do you boycott other GE companies, such as NBC? What about other companies you disagree with? I happen to dislike the tobacco industry, but find myself eating Nabisco Shredded Wheat. The list goes on. Even in my investing in the stock market, I find companies like Phillip Morris on the list. A few years ago I tried to emphasize Panasonic radios in my catalog, but none sold as well as the GE Superadio, and the GE models tended to remain in their product line year after year, while Panasonic changed their models so frequently that catalogs were soon rendered obsolete. I would like to eliminate GE radios, or convince them to get out of the nuclear business (let General Dynamics or Honeywell do it—companies which don't make radios!). I may have to phase out GE anyway, as there is a two to three month backlog in getting GE Superadios (model 7-2885); I suspect they are changing their country of manufacture out of China.

Quebec's Charles Gauthier reports that CISM *89.3 Montreal is on the air in stereo, French, from atop Mount Royal, with a format mostly p and r, including some classical and jazz; 65% of the rock will be from French-speaking artists. It frequently IDs as "La radio des étudiants de l'Université de Montreal." Charles is also hearing WCFE-FM *91.9 Plattsburgh NY, also stereo, but it is weak in Quebec. "They provide a very good news service since they broadcast the BBC World Service every night from 10 to 11 and Monitoradio from the Christian Science Monitor 4-5 p.m. The reception here is good, but only possible with an outside antenna. I can barely hear it in the car. I read in the WCFE-TV program guide that the FCC has limited WCFE-FM's range of broadcasting from Rand Hill until 1993 when they expect relocation to Lyon Mountain where the TV transmitter is. It should then have an extremely good signal in all the Montreal area and beyond. I wish you a very good DX season. A bientot! Soixante-treize (73)." He confirms the format of stereo station CHEY 94.7 Trois-Rivieres as m (middle of the road).

Now, before going to a paste-up of part of last month's FMedial newsletter, here is information culled from the most recent VUD.

See Also March VUD, p: 16

- AL Montgomery WLNE 96.1 \$, Pugh; DE Rehoboth Beach WGMG 92.7 Sunny 92.7 (from "FM 92"), Shaftan, p. 10
- FL Marco WGUW 92.7, [stereo]? Dunne, p. 16
- GA Douglas WDMG-FM 99.5 Magic-99 (from "99 Alive"), Sittal, p. 14
- KS Girard KYPG 99.1, having moved from 101.1, Hall, p. 11, and thanks for nice FM Atlas comments
- KY Whitesburg WKKQ 103.9 k, "K-104" (from "Q-104"), Sittal, p. 14
- MA Springfield "WBRO" 99.7 pirate with k or luegrass and Mutual, Bugej. Let me know if it seems to have any regular schedule and if it is stereo. By using a beam and a city map and then a car radio and a low sensitivity portable you should be able to pinpoint its exact location.
- MS Yazoo City WAZF-FM 93.7—what is its format and is it stereo? Sittal, p. 14
- NV Sparks KMMR 100.9 assume Jefferson (p. 15) means "I" when calls it "serwah"
- NJ Pomona WLFJ *91.7 Lite 91.7 (from "Lake Frad Radio"), Shaftan, p. 10
- NM Clovis KTDJ 99.9 Magic 99.9 (from "FM 100"), Pugh, p. 16; I assume it would be "Magic 99.9" and not just "Magic 99," because there is another Clovis station on 99.1 [it stereo?]
- NC Murphy WCNG 102.7 m, Sittal, p. 14; [is ND Williston KYYZ is on 96.1, not "96.3" (probably a typo), Cherry, p. 12
- OK Stillwater KOSU *91.7 still on d facilities, Buntin, p. 16, but remember to spell "It's

without the intrusive apostrophe—as in "its tower." "Not "It's tower." You would say, however, "It's a tower which is crumbling," meaning "It is a tower which is crumbling." SC St. Stephen WTUA 105.9 need to know if it has stereo—Sittal, p. 14

TN Rogersville WJDT 106.5 has \$, Sittal, p. 14

BAHAMAS 104-5 is in \$, Dunne (p. 16). Dunne is going to get a stereo receiver to replace his GE Superadio for DXing (and maybe helping the GE boycott!). Then he'll be better able to check on the stereo characteristics of the stations he receives.

It's too bad about Bill Fahber's computer ("From the Staff"). I, too, use a computer not compatible with any other. It is obsolete and if it crashes all the data it contained is lost. The last time when that happened, I was able to buy the identical model from my former supplier, and I still have the old computer, which could be fixed if necessary. And most of the data could be manually retrieved from the last "FM Atlas" and from issues of FMedial since then. I hope 811 or somebody else can revive the TV station column and WTTFA station list.

New FM Station, Translator Grants

- AL Atmore WYDH 3700 h.v.; 136 m, AL Native American Cstg., 105.9 m. [A. Seifert
- AL Georgiana 107.7 6000 h.v.; 100 m, Sharon/ AK 8 titles [Field] (location unknown) KZ21-AA 92.1 (KIAM AM Nenana AK translator)
- AZ Tucson 104.1 3000 h.v.; 14 m, F. E. M. Ray
- CA Bayside (Arcata) *91.5 500 watts h.v.; 251 m, Com. of Humboldt Educ. ERCS
- CA Livermore KBAY-1 100.3 50-w booster of San Jose station [of San Francisco station CA Martinez KOIT-FM2 96.5 200-watt booster/ CA Visalia KDUV *88.9 1000 h.v.; 807 m, Community Educational Broadcasting, Inc.
- CO San Antonio (SSW Alamosa near NM border) K209BC *89.7 (KFLQ 91.5 Albuquerque NM)
- DE Selbyville 97.9 3000 h.v.; 100 m, Anchor Cstg., reinstatement of initial decision and overturning of FCC Review Board
- FL Lecanto (Severy Hills) *88.3 3800 h.v.; 79 m, Diocese of St. Petersburg FL [Communications
- FL Port St. Lucie 101.3 6000 h.v.; 100 m, Gantt/ GA Cobb (25 km SE Americus) W212AJ *90.3 (WFR 90.5 Columbus GA) [IL, via satellite]
- HI Hilo K220DH *91.9 (WMBI-FM 90.1 Chicago IL)
- HI Kalahe'o 106.1 40 watts h.v.; 975 m, Shaka 8 cpts.
- HI Puuoa (near S. tip of big island) K1PA-FM1 1300 h, booster of Hilo station, 100.3 m.
- ID Idaho Falls K220DG *91.9 (WMBI-FM 90.1 Chicago IL)
- IL Mount Vernon W212AK *90.3 (WMBI-FM 90.1 Madison W215AD *91.1 (WMBI-FM) [try Cstg.]
- KS Norton 106.7 50500 h.v.; 28 m, Pioneer Coun./ KY Fort Knox WKED-FM 103.7 2500 h.v.; 109 m, Allan Communications, Inc.
- KY Westwood (this is the Westwood near Ashland KY, not the suburb of Louisville) 99.7 3000 h.v.; 100 m, Pickaway Communications, Inc.
- MI Newberry W204AD *88.7 (WPM 90.5 Gaylord)
- MN Spring Valley 104.3 2800 h.v.; 144 m, Radio Ingotd MN, Inc. [Catholic]
- MS Biloxi W207AP *89.3 (WMBI-FM 90.1 Chi-/ MS Gulfport W216AP *91.1 (WMBI-FM)
- MO Kirksville 107.9 100000 h.v.; 126 m, Hallmark Computer Services [Chicago IL]
- MO St. Joseph K209BE *89.7 (WMBI-FM 90.1/ MT Emigrant K208BX *89.5 (KGLT 91.9 Bozeman)
- MT Livingston K208BY *89.5 (KGLT) [cgo IL]
- NE Chadron K213BJ *90.5 (WMBI-FM 90.1 Chi-/ NE Valentine K214BJ *90.7 (WMBI-FM)
- NY Monroe *89.3 200 h.v.; 312 m, g. Sound of Life, Inc., see also "Deletions," below
- NC Goldsboro W217AC *91.3 (WMBI-FM 90.1 Chicago IL)
- NC Kinston W203AD *88.5 (WMBI-FM)
- NC Southport W213AG *90.5 (WMBI-FM)
- NC Wilmington W212AL *90.3 (WMBI-FM)
- OH Columbus *91.5 3000 h.v.; 100 m, g. Bright-

Call Letters Assigned or Changed

- AZ Window Rock 96.1 KWRK
- AZ Yuma *88.1 KZPL [still rm]
- CA San Diego 94.9 KRMX (KYY), "Mix 94.9,"/ CA Soledad 106.3 (CP was originally for 105.3) KLUK
- CO Denver 95.7 KHOW-FM (KSSY), r[ock]
- FL Fort Walton Beach 96.5 WJUS
- FL Graceville 102.1 WYDA
- GA Irwinston 103.7 WPKX (from WSYI)
- GA St. Simons Island 92.7 WMOG-FM (WPF); AM is in Brunswick GA
- IL Decatur 93.1 WYDS
- IN Newburgh 106.1 WSYZ (WEKK), r
- IN Salem 97.9 WDHM
- KS Wichita *90.7 KZZD (KGAM)
- LA Benton 92.1 KLKL (KDKS), "Cool 92.1"
- MD Pocomoke City 106.5 WMYJ
- MA Boston 98.5 WBMX-FM (WROR), sr, with some rock, but "no rock with a harder edge." It has hired Greg Strassel, formerly of WL0L 99.5 Minneapolis (now KSJN-FM, noncommercial, classical, despite three petitions to deny license change to Minnesota Public Radio, as program director, dumping Harry Nelson. →

- ness Ministries, Inc. [Chicago IL]
- OH Gallipolis W219AZ *91.7 (WMBI-FM 90.1/ OK Ardmore K206AX *89.1 (WMBI-FM)
- OK Bartlesville K206AY *89.1 (WMBI-FM)
- OK Grove K219BP *91.7 (WMBI-FM)
- OK Hooker K2148J *90.7 (WMBI-FM)
- OK Muskogee K2048Q *88.9 (WMBI-FM)
- OK Ponca City K2065Y *88.9 (WMBI-FM)
- OK Wilburton 103.7 6000 h.v.; 83 m, Blue Mtn. Cstg.

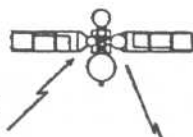
OR Newport K2058F *88.9, relaying KLCC *89.7 Eugene, and not to be replaced by new satellite station KLCC *90.5. "Our plans are to continue operation of the translator. . . Newport is a diverse community with an increasing number of retirees [and] to better serve community needs, KLCC plans to program KLCC differently during parts of the broadcast day. The translator will, of course, continue to carry KLCC during those periods of alternate programming." [delphia]



- PA Denver W214AL *90.7 (WRTI 90.1 Phila-/ PA Easton W208AJ *89.5 (WMBI-FM 90.1 Chicago IL)
- PA Johnstown W201AN *88.1 (WMBI-FM)
- PA Kane W211AK *90.1 (WMBI-FM)
- PA Lewisiston W214AK *90.7 (WMBI-FM)
- PA Mansfield 92.3 420 h.v.; 264 m, Jennifer Lamb
- PA Richland W214AL *90.7 (WRTI 90.1 Philadelphia) [communications]
- SC Scranton 102.9 3000 h.v.; 100 m, S. Com./ TN Bartlett (Memphis) 92.9 3000 h.v.; 100 m, Belz Broadcasting Co. [Chicago IL]
- TN Oak Ridge W215AH *90.9 (WMBI-FM 90.1/ TX Danison K213BL *90.5 (WMBI-FM) [Corp. TX Tahoka 95.3 3000 h.v.; 100 m, Parity Radio/ TX Texarkana K212AW *90.5 (WMBI-FM 90.1 Chicago IL) [Baptist Academy, Inc.]
- UT Salt Lake City *88.3 500 h.v.; 362 m, g. S.L./ VA Vinton (Roanoke) 101.5 630 h.v.; 215 m, Carol S. Bowman
- WA Ellensburg *90.7 5000 h.v.; 778 m, WA State U. (see also "Deletions," below)
- WV Montgomery 93.3 400 h.v.; 217 m, Upper Kanawha Valley Broadcasters [Chicago IL]
- WY Douglas K2198Q *91.7 (WMBI-FM 90.1/ WY Evanston K2138I *90.5 (WMBI-FM)
- WY Jackson K216CI *91.1 (WMBI-FM)
- PO La Poudre CHOZ 97.5 25200 h.v., with transmitter at St. Oursine "to ensure that the 500 w/m contour excludes Riviere-du-Loup and surrounding area" Denied

NB Edmondston, a bid by CIBM Riviere-du-Loup for a 4-w relay because of possible adverse impact on the Edmondston advertiser base

SATELLITE NEWS



GEORGE W. JENSEN
4604 Anntana Avenue
Baltimore, MD 21206-4220

A short column this time. After a lot of moving around and other activity, things have slowed down considerably.

Telstar 3 - TVN now using XPDRs 1, 3, 5 and 9 in VC2 plus - Video-Pal

NBC seems to be using less and less on K2 and moving some other services to other Ku birds - like their news feed channel.

Satcom 4 - International Channel has moved from XPDR 20 to 12

Spacenet 2 - SCOLA has moved again from 15 to XPDR 23

Satcom 3 - Request TV2 is now on XPDR 4 from Satcom 4 - 4

Galaxy 6 - Superior Livestock Auctions (Saturdays) XPDR 23

The New Inspiration Network has moved from Galaxy 3 XPDR 2 and now is on Satcom 3 XPDR 18 (this was the trade with TNT mentioned some time ago.)

Galaxy 1 - TNT now permanently on XPDR 17

Morelos 2 XPDR 13 - believed to be XEVIP full time (Canal 11 ID noted)

Westar 4 XPDR 17 - OUTLAW MUSIC CHANNEL apparently not going to use a MAC system and airs Midnight to 7 AM.

The CBS Dharhan feed was on Telstar at 27W XPDR 15V. they did not use a US domestic to relay as others did. This is why there was some questions as to where their feed was by many sources.

Also on the same bird at XPDR 18V is the CNN feed from numerour overseas sources.

And now the BAD news. ABC is using a Leitch encryption system now on its Saudi pool feed. It has been said that they intent to scramble all of their feeds. It looks like this is about to begin.

That's all from this end for now. See you in 30.

73's
George



WESTERN TV-DX

Fred McCormack
Box 17860
St. Paul MN 55117-7860

Deadline: 05-10-91
Cut-off: 02-01-91

April 1991

It was an extraordinary February for TV-DX. There were at least two E skip openings, including one which may have brought Puerto Rico to Oklahoma. As if that wasn't unusual enough, a super tropo event took place on the 8th.

New ___ New Mode __ Tent. - t Unidentified - unid S/On - + S/off - =
ID Color Bars - @ Unid Color Bars - % Misc. Test Patterns - &
Parallel Programming - // MTS Stereo - \$

NL Nuevo Leon TA Tamaulipas

Christopher W. Hanley, 1321 Beecher Avenue, Galesburg IL 61401

CST

Equipment:

VHF antenna (unknown vintage) at approximately 30 feet. Tabletop Radio Shack UHF bow tie in the attic at approximately 15 feet. Kawasho 13" color set.

Tropo reared its not-so-ugly head here the night of February 8th. It was the best February TV-DX I've seen since 1980, my first year. It sure was a welcome sight. Here's the edited version:

February 1991			8 tr 2038 WXINT 59 IN			8 tr 2101 WDRB 41(IN) 300		
8 tr 2000	WSIU	8 IL 206	2044	WFWat	39 IN	2103	WKGBt	53 KY
2004	WUSI	16 IL 188	2045	WNITT	34 IN	2206	WTHR	13 IN 231
2012	KSPRT	33 MO	2049	WTKK	29 IN 235	2218	WFIE	14(KY) 261
2018	WWSL	46(MO) 177	2050	WSJV	28 IN 222	2225	WNDU	16 IN 221
2030	WKMA	35 KY 302	2052	WPSD	6 KY 270	2230	WEVV	44(KY) 258
2032	WCLJt	42 IN	2057	WKEF	22 OH 333	2232	K53	53 ??
2036	WCETt	48 OH	2100	WLKY	32(IN) 300		(Unknown	WKYT-27)

My total is now 171 counting the ID Jeff Kadet solved for me and two others (CFAP-2 PQ 6-27-88 and WJXT-4 FL 7-10-89) I got. God bless and 73s.

William Draeb, Ellis St., Rt. #2, Kewaunee WI 54216 (414-388-2350)

CST

Equipment:

7' Finco dish, B-T CMA-Ub preamp @ 93', .750 cable. Stacked Finco high band yagis @ 100' with RG/11 cable. Second tower, 40', with Winegard CH-2026 (lo-band) yagi. Zenith 14N22 table model 23" b&w (1971) with B-T BTU-2s UHF converter (used for UHF and also the stacked hi-band yagis) and Zenith 16J20 19" b&w (early 60's) (used with antennas on 40' tower). Panasonic 9" b&w portable.

December 1990			7 tr 2209 KAWB 22 MN 365			8 tr 0530 Louisville Us		
31 Es 0625	unid ch 2+ sw		(Abv 2 snowfree)					Portsmouth Us
	KDFW 4 TX 965		K19BG 19 MN 335					Lower Ontario Us
0830	unid ch 3 ed		(St. Cloud TBN)					(Most snow free)
			KXLI 41 MN 310			1721	WTCIt	45 TN
			2221	KXLIt	47 MN		WDRB	41(IN) 437
			2231	WCET	48 OH 400	1953	WAFF	48 AL 685
			WOSU 34 OH 395				WBMG	42 AL 768
			WXIX 19(OH) 400				WPBO	42 OH 461
			K57-- 57 ??			1958	WXMTt	30 TN
			(Unknown KSTP- 5)				WEVV	44(KY) 420
			2248	K45-- 45 ??			WCET	48 OH 400
			(Unknown KMSP- 9)				WXIX	19(OH) 400
			CBCE 16 ON 285				WHNTt	19 AL
			Evansville Us				WTVQ	36 KY 473
			Cincinnati Us			2012	WKGB	53 KY 535
			Columbus Us				WGRB	34 KY 515
			Cleveland Us			2015	WFIE	14(KY) 420
			Toronto Us				WEHT	25(KY) 420
			Buffalo Us				WKPC	15(IN) 437
			Erie Us			2026	WCTEt	22 TN

Jeff Kadet (continued)

8 tr 0320	&CBLFT 25 ON 610	8 tr 1900	Atlanta U's 576	9 tr 0103	W558M 55 GA 555
	@CFMT 47 ON 610		(See Note # 2)		(Marietta VJN)
	CITY 57 ON 610		Chattanooga Us /	0154	unid ch 22+ HSN
0348	WSYT 68 NY 765	2040	WSBN 47 VA 500		(S of Louisville)
0355	@WQLN 54 PA 555	2214	W67CI 67 GA 555	0202	W68-- 68 ??
0412	W68-- 68 ??		(Roswell "WCI" LPTV)		(See Note # 4)
	(Unknown TBN)	2229	W62BG 62 AL 527	0217	W29AO 29 AL 512
	(St. Louis hdg)		(See Note # 3)		(Anniston WBRC- 6)
0416	CICA 19 ON 610	2306	=WBQI 10 AL 526		W15AP 15 AL 539
	&CBLFT9 53 ON 511		(o/WGEM - RARE!)		(Gadsden WBRC- 6)
0438	WUTR 20 NY 819	2325	W53AZ 53 AL 525	0329	WLTZ 38 GA 639
0442	@WNED 17 NY 620		(Birmingham WTJP-60)	0400	K/W21-- 21z
	WCMW 21 MI 334		WTJP 60 AL 520		(See Note # 5)
	(Rare)	2340	WFOA 32 AL 615	0405	unid ch 24+ HSN
0556	CBLFT17 68 ON463		WJSP 28 GA 635		(Nashville hdg)
1200	unid ch 59z PBS	2346	=WTLK 14 GA 576	0450	@WDCO 29 GA 690
	(ene- Utica on?)	9 tr 0023	@W34AG 34 GA 520	0455	@WOWK 13 WV 455
1205	unid 73 religion		(Rome WTLK-14)		@WCPL 18 GA 510
	(ene - not TBN)		(WTLK-14 TP w/'34' LR)		OKC & Tulsa Us
1900	WBMG 42 AL 527	0057	W33AT 33 GA 615		in well all AM
			(LaGrange country mx)		

Note # 1 - Normally KMEG-14. K55FL must pick up KMEG from K4000 (Storm Lake).

Note # 2 - A totally delightful opening to a part of the country which seldom produces strong signal strengths here. WVEU-69 was particularly awesome, as was WBMG-42. In the evening, local WMEC-22 (2 miles away) was covered by both WSBT and WKEF depending on where the dish was pointed. Local cable was demolished on channels they pick up off the air.

Note # 3 - What's the deal in Birmingham? W62BG is supposed to carry WDBB-17 which it was, but they were also often giving WTT0-21 IDs as well (another Birmingham station)?

Note # 4 - Video Jukebox Network - gave channel 59 visual ID - not a spur!!! To southeast.

Note # 5 - Non-IDing Home Shopping Spree on St. Louis heading - seen often.

Can anyone confirm if the channel 62 Channel America in Columbus, Ohio is on the air? There was a giant tropo opening to there on December 27th with the channel 28 blasting in, yet no trace of anything on channel 62.

Thanks to Mike Reid for confirming reception of CIII-7-7. Also to Doug Smith for IDing channel 59 Video Jukebox Network to the southeast which is from Nashville. Also to Joop in the Netherlands for sending the E skip pics (send more!).

On November 1st, KCRA-3 was in here on double-hop at 0130. They are the only double-hop station ever seen from here and this was their 4th time. Station total now at about 1175.

Dave Pomeroy, 1169 Webster, Topeka KS 66604-1502 (913-354-4963)

CST

Despite an inoperative rotor (which I don't plan to replace soon as we expect to move elsewhere in Topeka in June), I was able to get some fair tropo in February (the 8th) in an arc from Chicago to Lexington. The antenna is pointed straight east.

February 1991

8 tr 1810	WAND 17 IL 370	8 tr 1900	WTKK 29(IN) 525	8 tr 2200	WFIE 14(KY) 450
	WICS 20 IL 335		(See Note # 1)		WIFI 18 IN 490
	WRSP 55 IL 335		WYZZ 43 IL 360	22 tr	K17CK 17 KS
	WHSL 46(MO) 285		WTVP 47 IL 340		(Topeka VJN)
	KDNL 30 MO 290		WEVV 44(KY) 445		(See Note # 2)
	WFLD 32 IL 465	2200	WTVQ 36 KY 615	23 Es 1900	WEDU 3 FL 1090

Note # 1 - ID and promos only for "TTV-4", a definite violation of FCC rules.

Note # 2 - I'm not sure where this one is located, but it is quite clear on an indoor UHF antenna. I suspect it is 1000 Watts - probable NW of my location. It definitely wipes out channel 17 from anywhere else. It does ID visually on the hour with "K17CK Topeka, Kansas." It is on 24 hours.

Hope I'll have more to report before my antenna situation is corrected in a few months.

William Eckberg, 1032 Sterling Road, Dixon IL 61021

CST

Equipment: See February 1990 Western TV-DX

February 1991

1 Es 2045	KPRC 2 TX 893	8 tr 0230	KSAX 42 MN 404	8 tr 1945	K69FN 69 MO 213
	2155 XEFB 2 NL 1282		0540 KHBS 40 AR 513		(St. Louis LPTV)
	2330 KMID 2 TX 967		0545 KHOG 29 AR 463	2000	WBMG 42 AL 582
	2400 XHRIO 2 TA 1201		0546 KPOM 24 AR 513	2030	WYMT 57 KY 449
3 tr 2000	WLAJ 53 MI 254		1130 WXMI 30 TN 408	2200	WAAY 31 AL 503
	7 tr 2230 KHNE 29 NE 464		1300 WKSO 29 KY 405	2205	WHNT 19 AL 503
			1910 WAFF 48 AL 503	9 tr 0005	WTJP 60 AL 561
			1920 WZDX 54 AL 503		0025 WXMI 30 TN 408

Historically, February must rank last for TV-DX. 1991 proved the exception here with E skip and tropo on the 1st and 8th respectively. On the 1st, E skip was in before 2045 and past 2400. Early it reached channel 4.

The channels were full with tropo throughout the day on the 8th. The party ended abruptly at 0030 on the 9th as the long occluded front passed to the south. Gadsden 60 being logged at this time as my most distant UHF ever past channel 50 at 551 miles. At 2200 on the 8th, Huntsville 19 and 31 were easily taking out the local Peoria UHFs with snow free signals and only a few degrees different antenna heading. February 1991 certainly proved that 1st class E skip and tropo can occur at any time or season.

Interestingly, St. Louis 69 has their ID on the screen during programming. Also, Springfield, Missouri has their distinctive 33 on the screen continuously. Jefferson City 25 is begging for contributions to stay on the air.

Glenn Hauser, Box 1684, Enid OK 73702

CST

Despite a great deal of TV-DX activity, especially in the 60s and 70s, double-hop sporadic E has been extremely elusive for me. Now I'm wondering if I have a catch which could be anything but. An unusual opening on Saturday, February 23, first noted at 1803 CST began with WBRZ-2, PBS on channel 2, WSAV-3, WESH-2, a bit of FM from Georgia and Florida; and at 1936, TELEMUNDO promos on channel 2 during their Cine Accion program. This peaked in again during the next break at 1945 when Telemundo program promos mentioned times as "10, 9 Centro" as presumably carried in the U.S. proper, but lacking any tropo from KFWD-52, I had nothing to compare it with; Enciclopedia Britannica ad with 1-800 number, war bulletin. By 1948, Mexico was in with XEW net on channel 3; but at 1958, channel 2 still had Telemundo with another break, but never any local ID caught. At 2029, some local ads in Spanish, but not sure if same station on channel 2; by 2058, XEW was there on channel 2. So the question is, could this Telemundo outlet on channel 2 be anything but WKAQ in San Juan, PUERTO RICO? It's a U.S., not a Mexican net, and I suppose the only other possibility is that one of the Mexican border stations is carrying it (or maybe there's an LPTV or translator carrying it somewhere in the U.S. on channel 2). I'll appreciate any comments on whether this could only be WKAQ, or could be something else. 73!

(Good to hear from you, Glenn. I hope someone can tell you if there are any other possibilities. Feel free to send in your more routine loggings too! fm)

Jeff Kadet, Box 20, Macomb IL 61455 (W3CRH) (309-833-1809)

CST

Equipment:

ICOM R7000 with video adapter, JVC and Panasonic monitors. Various Zenith TV's. Screened Channel Master 7' dish with PA-4975 preamplifier, .500 aluminum hardline up 85'. Channel Master 1110 with PA-1975 preamplifier, .500 aluminum hardline up 80'. Winegard 5 element lo-band yagi (vertically polarized) with RG-11 up 18'.

December 1990

19 tr 1714	WBMG 42 AL 527	20 tr 0635	WMAV 18 MS 425	3 tr 0505	W48AP 48 OH 375
	Huntsville Us455		(o/KLJB - rare)		(Toledo LPTV)
	K43CJ 43 AR 310		7 tr 1817	K69DA 69 MN 420	
20 tr 0027	KLAX 31 LA 623			(Little Falls KSAX-42)	
	KARD 14 LA 583			K66CN 66 AR 320	
	0420 @WVSB 27 MS 468			(Harrison TBN)	
	0424 @KSLA 12 LA 580				(Granite Falls KARE-11)
	0439 @KTAL 6(LA) 580				1840 K57CN 57 MN 280
	0457 @WTV 9 MS 450				(Wabasha KSTP- 5)
	0503 @WXVT 15 MS 469				8 tr 0110
	0534 @KETG 9 AR 471				K55FL 55 IA 290
					(Spencer w/KBS-40)
					(See Note # 1)

EASTERN TV-DX

Bill Nienajadly
PO Box 2999
Clifton NJ 07015-2999

March/April 1991 Cutoff 3 months from deadline Deadline: May 5 1991

A very interesting ETVDX column this month. January and February had some surprise DX from tropics and...Man made E-skip! Nasa was conducting experiments with the atmosphere by releasing canisters of Barium and Lithium to form clouds in which to check the affect of magnetic and radio disturbances on January 12th. The result was E-skip. This is not the first time this experiment was done, I seem to recall 1985 or 1986 and DXers also reported this event.

Super Tropo for...Falconer 757 miles from Nebraska to Ontario! Phelps 800 miles to San Antonio TX from KY! Combs 400-500 mile tropo. Some dude from Joisey sees Maine on UHF!

Jeff Wolf 1131 University Blvd Silver Spring MD 20902

December 1990

1 Tr 0957 zero cci to
WRLH 35 VA
0959 WYED 17 NC 248

1 Tr 0959 WPTF 28 NC 251
1009 WPDE 15 SC t
1403 + 1631-2130
WPHL 17 PA

January 1991
13 ES 0943 UNID 2z
1040 Fade outs

Christopher S Dunne 21500 Johnson ST Box 533 Pembroke Pines Florida 33029

Equipment: Sony 9" Trinitron/Teknika TVC-22 Tuner/Rabbit ears/UHF bowtie at height of 2' hi
January 1991

20 Tr 2100 WPXI 15 AL 500 t :Fox, WPCS 89.5 in, WTOG 44 nearly nulled to show 44 Pensacola t
23 Tr 1000+TR t 13 CUBA 210 : Tele Rebelde, TP (See Note #1)
2300 " " " " : again with news & clock in lower left!
2300+—t 9 CUBA 210 : Cuba Vision: in order: US? rock video, then 'claymation' cartoon
(a la Gumby) than a English (SS subtitles) movie, "The Secret"
(See note #2)

Footlike notes: #1 I believe there is a 2 hr "Today"-like show, 8-10 am local time, then a TP until the afternoon.
#2 Fine thing to get tropo from Cuba right while "The Honeymooners" is on Ch 33!! I had a tough decision, huh? Fidel can really be a Weisenheimer hi..
(All CUBA loggings believed to be from Matanzas)

Comments: I would appreciate any feedback concerning my Cuba loggings, i.e. should I continue to report these (to show programming details), or is it just a bore when I report 9 & 13 over & over & over?!?!?! They come in with a watchable signal about three times a year. Write me. "Setenta y tres" Christopher

(Ed Notes; Cuba is rarely reported on tropo. For the policy of reporting to ETVDX about programming details., If any country OTHER than the US, Canada or sometimes Mexico gets reported then it's OK and even encouraged to provide programming info. You are the only one reporting Cuba on tropo and information that you provide can help other DXers in the future perhaps. Also 3 times a year is not excessive at all, but if the same station was reported 10 times a month, month after month..then thats excessive. Que Pasa? HI!-BN)

Tom Bryant 849 Todd Preis Dr Nashville TN 37221 CST

January 1st (1991): Very active tropo with openings to Hunstville, Birmingham, Memphis, Central KY, Southern IN and Southeast MD. Hi V's & low U's only.
January 2nd: More of the same as 1/1 with the addition of one new catch, WKSD-29-KY @ 139 miles
January 6th: Thru end of January ..Many MS bursts on Channel 2...KJSD-2-SD in many times along with a mystery set of color bars. Will report details on that to John Combs.
longest sighting of KJSD was almost a minute in duration. WKRN-2 (local) has changed operating hours again and there's more opportunity to catch MS activity
Details on WKRN and several LPTV changes sent to Bill Fahber. 73's Tom

Harry J. Hayes 9 Henry St Wilkes Barre PA 18702

Equipment: Old junky RCA 1971 RCA TV/Ch 2 quad loop w/radio shack amp.

January 1991

12 ES Ch 2-5 2230-2330

12 ES 2250 CBIT 2 NS Aspen (ID as CBC Cape Breton) winter storm advisoies.

see next page for Harry's comments

Eastern Tv DX

March April 1991

Jeff Falconer Box 63 Clinton ON N4M 1L0

Equipment: Icom R7000, 25 el log periodic at 25' with rotor

November 1990

28 ES 1659 WEDU 3 FL 1087
1700 WJXT 4 FL 919
1700 WESH 2 FL 1011
1729 WPBT 2 FL 1218

December 1990

13 ES 1350 MUF 4

February 1991

8 Tr 0157 WCIU 26 IL 334
0159 WFLD 32 IL 333
0204 WNDU 16 IN 277
0208 WANE 15 IN 256
0211 WSBT 22 IN 277
0212 WHME 46 IN 275
0231 WSNS 44 IL 333-SS

8 Tr 0249 WHMB 40 IN 353
1044 WLAJ 53 MI 159
1049 WDJT 58 WI 324
#1- 1056 KYNE 26 NE 757
1125 WMYT 36 WI 324
1130 WQRF 39 IL 399
1156 KSPR 33 MO 745
1223 WJJA 49 WI 330

#1 New record Tr distance for me.

Nice opening Feb 8 came to a quick end around 1 PM. Other than that, not much to report.
73 Jeff

Ed Phelps Rt 2 Box 266 Benton KY 42025 502-527-2289 (Phoned in report-BN)

January 28 & 29 1991 (No times listed) All tropo

Ch 60 KVDA TX-800 WGNO 26 LA 500 WAPT 16 MS 325 WJTV 12 MS 325 KEIK 56 TX Ch 51 Longview
Ch 62 W62BG Birmingham AL 250 // to WDBB 17

0110-0115 KEIK-56-TX Left their TP on for 5 minutes after I asked them to!
WITTO-21 reportedly buying WDBB-17, W62BG, WNAL-44-AL for a possible network.

Harry Hayes continued from last page (Ed note: OOPS! Sorry it should have gone on top-BN)

Very little DX activity noted this winter despite checking every day. The E-Skip event that some experienced on 11/28 was not noted by me because I was working that Wednesday afternoon. Here's an alert to any DXers who may picked up my WOLF-38 at 2200 local time. If you see 'Newswatch 16' news here, it's not your imagination. WOLF and WNEP-16 have teamed up to have a special broadcast of Newswatch 16 broadcast on channel 38 w/all Ch 16 logos and newsteam int intact. It is believed that this is the first such arrangement between two not commonly owned stations in the nation. 73 till next time.

(Ed comment: Didn't a UHF in NC rebroadcast WRAL 5 NC a year or so ago when for different reasons (tower collapse) resulted in such a arrangement of this type?-BN)

John F Combs PO Box 7581 Tallahassee FL 32314

December 1990

25 Tr 1840 WICE 21 FL 326?
WTVX 34 FL 326
+ WYAK 56 FL 279
1900 WFLX 29 FL 360
WXEL 42 FL 360
+ TF Myers U's
2017 WPBF 25 FL 326

31 Tr 1800 FT Myers U's

Atlanta U's
1900 WITTO 21 AL 258
1909 WBYC 42 AL 258
WCFT 33 AL 267
1933 WDSI 61 TN 335
1942 WTCT 45 TN 335
2018 KBST 23 MO 586
Multiple promos
w/"Fox 23" calls
dominated WSRE 23
for about 20 min.
2022 WTJP 60 AL 266
WCAJ 68 AL 258
WNCM 34 GA 263
2042 WPTY 24 TN 460
2057 WLMT 30 TN 458

31 Tr 2117 KLRT 16 AR 565
"Fox 16 ID's, Movie
then Magnum PI,
later con firm'd by
phone.

January 1991

4 Tr 2150 WMAH 19 MS 279
5 Tr 1530 WMAH 19 MS 279
18 Tr 0630 Atlanta 36,39
W59BC FL 160
27 Tr 0945 WGNO 26 LA 340
WNOL 38 LA 340
28 Tr 2059 KLTL 18 LA 520
KLPB 24 LA 484
Both very weak,
in/out-classic
ducting w/New Orle
-ans not in, Mobile
at normal levels.
30 Tr 0630 Ft Pierce U's
W.Palm Beach U's
Ft Myers U's

February 1991

1 ES 2105+UNIDs 2-4

4 Tr 2357 WIAT 24 SC 317
5 Tr 0002 W59BC FL 160
0005 W67BJ GA 205
8 Tr 0525 WAPT 16 MS 377
WVUE 8 LA 341
WGNO 26 LA 340
WNOL 38 LA 340
0555 Had to leave
10 Tr 0113 W. Palm-Beach U's
Ft Myers U's
Ft Pierce U's
(No Ft Lee U's? HI!-BN)
0950 Time in, UHF jam-
med, Central & S.
FL U's SOLID +
New Orleans 26,38
0953 WHFT 45 FL 393
1003 WBFS 33 FL 393
1006 WLTV 23 FL 394

A really nice New Year's tropo opening brought my farthest ever over land UHF loggings-KLRT 16 & KBSI-23. As Greg Coniglio remarked-it's hard to believe he & I have a UHF logging in common! KBSI would probably freak if they knew they'd been seen in both NY & FL.

(John's comments continue on the next page-BN)

John Combs continued

My work schedule has allowed for precious little DX time the last 8 weeks, so I've hardly noted any Es and most of my home time was very late at night or very early in the AM. May have missed some good Tr, too, but no use crying about it—we all have to earn a living unfortunately.

73's John

Bob Timmerman 1210 Desoto Court Auburn IN 46706 EST year-round

February 1991

8 Tr 0950 KBSI 23 MO 363	8 Tr 1900 INID 53 South	8 Tr 2216 WPTY 24 TN 496
1000 KFVS 12 MO 360	w/700 club	2314 WWSB 27 MS 566
1520 KSPR 33 MO 509	1905 WICT 27 IL 336	WMAV 18 MS t
over local WKJG	1912 WKPT 19 TN 375	Definitely PBS &
1830 WUSI 16 IL 237	1915 WSRN 47 VA 334	zero offset, but

Nice to see some 500+ tropo on my birthday! KSPR-33 interfered with local WKJG (easily nulled out) all day. St. Louis 9, 11, 24 30 & 46 were also in all day (339 miles).

2320 WKMU 21 KY 372
over local WPTA

TBN sent me an updated list of TBN owned & operated affiliated stations, which I have copied verbatim.

****STATION NEWS**** WINM-63 Angola, is back on the air. They are now owned by Total Christian Television and carry a lot of TBN programming. WINM's transmitter is still Edgerton, Ohio, so that makes them a () station.

Tom Bryant 849 Todd Preis Drive Nashville, TN 37221 (Central time)

Columbus Day came in 'fabulous' February! Pulled in both WIVM-9-GA and WBSN-10-OH in the same night...both new! NO relogs listed, as I'd use up half the magazine. Had 11 states in 6 hours on the 9th: and another super set of openings on the 20th & 21st. During all openings semi-regulars like Evansville, St. Louis, Jonesboro, Indy & Cincy were snow free (or close to it). Saw a commercial for "SMEDLEY'S CHEVYLAND" (love the name) on 22 (WKCF/OH): and noted that

****STATION NEWS**** 16 in Jackson, TN changed calls from WJWT to WMU.

Here's the blow by blow:

February 1991

9 Tr 0121 WIVM 9 GA 283	20 Tr 2129 WICI 45 TN 107	21 Tr 0231 WRGT 45 OH 292
0301 WBSN 10 OH 343	2129 WVAL 44 AL 148	Plus another 25 to
plus about 30	2131 WJTP 60 AL 155	30 relogs-
relogs	2159 WTLK 14 GA 155	
20 Tr 2115 WDSI 61 TN 107	Milage is likely dif	2100 to midnite
2129 WCAJ 58 AL 178	-ferent due to xmtr	another Massive open-
+ 20 relogs	move closer to Atlanta	ing as 2/20 no new

There was one really weird situation late nite 2/21 & early morning 2/22 as local LPTV W12BV appeared to be off, but really wasn't. They get their HSN program feed via off the air pickup of W24AE, and the 24 xmtr was down. Thus, W12BV was repeating whatever it's receiving antenna was picking up: WKYU (24) from Bowling Green, and later, WPTY (24) from Memphis. Somehow (probably due to detuning) the W 12BV sidebands on channel 11 contained audio from KBSI (23) in Cape Girardeau. It took a while to figure out what was happening as the signals on 12 appeared very weak, thus leading me to the mistaken impression that I was getting repeaters from somewhere in West TN or the M.O. Bootheel. Trop reception at 700' above ground isn't as good as it is at 20'...as I was getting everything 12 was picking up stronger over the air than they were,

Tom

Jeff Wolf 1131 University Blvd W. Apt 701 Silver Spring MD 20902

February 1991

3 Tr 0105 UNID 28 West	3 Tr 0641 WYED 17 NC 248	9 Tr 0120 W28AL VA t
w/TBN, w28AL	Norfolk 15-27-s/E	0133 WKBN 27 OH t
Front Royal VA	0644 WKFT 40 NC 265	10 ES 0843 UNID 2 cci
0641 WPTF 28 NC 251	0645 W25AA VA	? 0850 UNID 2zcci
0641 WUNK 25 NC 244	0645 WUNP 36 NC 195	? 0943 UNID 3
		? 0950 cci strong
		1019 Fade outs

****STATION NEWS****

W28AL Front Royal, VA is licensed as an LPTV. W10AZ Woodstock VA carries TBN & other programming & is listed as W28AL's primary station. This information from the 1990 TV & CABLE FACTBOOK.

Christopher S. Dunne, (NEW ADDRESS:) 21541 NW 8 Ct., Box 81, Pembroke Pines, FL 33029

Buenos dias, y'all. No Es to report, but exotic trop VHF to Cuba again. (See Mar VUD for the equipment I use.) Jacksonville came in as well. I included program details for some of the Cuba logs. TR = Tele Rebelde. CV = Cuba Vision. CU = Cuba.

January 1991

	2308 TR 13 CU 210?	(note #6)
	(note #4)	0040 Jacksonville:
29 Tr 2100 ???t 3 CU?	31 Tr 0800 TR 13 CU 210?	17(color)/30/47
(Note #1)	(note #5)	0150 W60??60 FL 175?
30 " 0859 WNPT 47 FL 300	February 1991	W61??61 FL 170?
0900 WAWS 30 FL 300		(see notes 7&8)
0901 ??? 17	11 Tr 0033 W6??63 FL 175	2030 CV 9 CU 210?
(note #2)	(note #6)	(note #9)
2300 CV 9 CU 210?	0038 W6JBT20 FL 250	TR 13 CU 210?
(note #3)		(note #10)

- (1) I'm a rare entity - I have YET to confirm this station from home, tho' everyone else, it seems, has seen this one (3 Cuba)!
- (2) Audio u/WLRN-TV, doubtless WJKS.
- (3) Programming: "Rhythm of the Rain" rock video (Fogelberg) (?)/Spain travelogue/movie.
- (4) Prog: end of baseball game/nx with clock
- (5) BEST CUBA RECEPTION EVER - COLOR FOR OVER 60 MINUTES! Prog: "Revista de la Mañana" ("Morning Magazine"), something like our Today show; included was one pop video by a group called "Mezcla" (Mixture)/Japanese-style cartoon at 1000. Sorry - but all other possible Tr had to take a back seat; you understand that, dontoha Bill?
- (6) This is a relay of WTMW 32, Dr. Gene Scott program. I was told by a lady at WTMW that this is from Lake Seminole (but she wasn't 100% sure).
- (7) One reference book at the local library has a ch 60 LPTV at Dunedin with TBN, which this station had.
- (8) LPTV 61 in Tampa is Univision, which my 61 had.
- (9) Prog: SS concert, female vocal.
- (10) ID "Tele Rebelde (Ch) 2".

Nothing else to tell you; this was a mouthful. *Setenta y tres*

If you must edit this, okay. However, I thought this whole thing would help potential Cuba loggers... (You are right, and everything is left intact! Hi!-BN)

Dude from Joisey PO Box 2999 Clifton NJ 07015-2999 201-478-3044 All tropo

There has been a few openings the last two months to Boston, Hartford and WNSD 50 NH has showed when Boston is S/F & local WNUM is off a few times since. Late February bought a opening where Springfield Mass was better than Hartford and rarely seen WHLL 27 was noted with super rare WGBY 57 MA. Finally got a new TV state MAINE! WPXI 51 ME 282 at 0130 approx on Jan 30 1991. I have more to mention but Im running outta space.

*** IRCA AM-FM ALMANAC, 5th Edition 1991 ***

The fifth edition of the IRCA AM-FM Almanac is now available! This 240 page book is a must have cross reference for the serious FM and AM DXer. Within it you will find the current frequency check list, affiliates for news and talk show networks, syndicated music and religious programs, AM-FM simulcasts, station slogans, broadcasting in Canada, AM stereo, sports networks, utility stations and many articles on broadcasting. In addition, Volume V contains a section focusing on AM band foreign DXing. Each list is in frequency order and many include the FM frequencies as well as the AM (great for FM DXers).

The IRCA AM-FM Almanac is available in large comb bound or loose leaf (please state preference when ordering). Prices are:

IRCA member: US - \$13.00 Canada - \$14.00 Overseas Sea Mail - \$14.00 Overseas Air-Mail - \$17.00
non-members: US - \$15.00 Canada - \$16.00 Overseas Sea Mail - \$16.00 Overseas Air-Mail - \$19.00

The IRCA AM-FM Almanac is available from: IRCA, 11300 Magnolia #43, Riverside, CA 92505.

SOUTHERN FM DX

APRIL 1991

Danny Buntin
1312 N. Skyline
Stillwater, OK 74075

DEADLINE: 14th

SOME TR HIGHLIGHTS FEB. (also brief Es) HOMEMADE ANTENNA-CRAFT "FM 13" SET TO GO UP.

Doug Allen, w2crs, P. O. Box 5646, Woodland Park, CO 80866

Equip.: Pioneer TX 9800(IF modified) & stacked Stereo Probe 9's at 25'

2/1 ms	2/6 gw
1123 WTXI 98.1 AL Fayette'98 TXT", ID	1100 KKDD 107.1 CO Brush, still on freq.
1135 WKCO 98.1 MI Saginaw, local wx	1100 KCCY 97.9 CO Pueblo, still on freq.
2/4 & 2/5 tr	2/19 gw
enhancement out to 465 miles, central NE,	1000 KEPC 89.7 CO Col. Springs, ex 90.5
KS, Amarillo, TX, Enid, OK	1100 KTLF 90.5 CO Col. Springs, 89.7
2/6 ms	
1049 KCLN 97.7 IA Clinton, "97.7 KCLN", ID	

A quiet month of FM DXing here. Spent most of my time on 5-band DXCC pursuit with my new (old)Hytower antenna. Notice the local call/freq. changes here. KEPC is the Pikes Peak Community College station and is on irregularly. Have put together an Antennacraft "FM13". I'll take down the lower Stereo Probe 9 and replace it with the "FM 13" with a switching arrangement, so I can make comparisons this month. If it outperforms the higher Stereo Probe 9, I'll use stacked Antennacraft 13s this season. Have received very few replies to my request for the sporadic E "pest" study(see February VUD). Unless I receive a dozen or more replies, I'll abandon the project, and assume that pests are not really an important factor in FM DXing the way they are in AM DXing, which has been my experience. I will reply to those who sent SASEs. (SFM editor's note: Yes, I hope plenty of DXers will respond to your project. Es does need more study about its nature. Every Es season FL is often in here, but seldom hear from the panhandle of that state.Count me as a participant. DB) My meteor scatter article is on hold until I get permission to reprint several graphs, etc. I've received some much appreciated, excellent info on ms from several FM DXers, but can always use more! Good DXing to all!

Todd Brandenburg KAOKAN, 1337 Woodhull #6, Topeka, KS 66604 913-273-8168

Equip.: Marantz ST-300 tuner(150kHz filters installed Feb. 23, 1991), Antennacraft FM-10 at 38 ft. with rotor. fed w/RG-6. All DX from Silver Lake, KS. All times CST.

2/8 tr	2/8 tr
1900 96.9 WLBH IL Mattoon,legal ID, UPI nx	1951 102.7 WPFT IN Terre Haute, Power 103,ads
1919 104.5 WFME IL Springfield, local ads	1954 104.1 WRXZ IN Bloomington, Z-104, wx
1930 100.5 WYMG IL Jacksonville, calls, YL	1956 102.9 WSOY IL Decatur, legal ID
ann.--Slaughter song + calls	2/23 Es
1945 88.7 WPCK IL Champaign legal ID, wx, r	1800 102.3 WTRS FL Dunnellon, legal ID
1948 90.3 WBCI IN Ft. Wayne, FM-90 Ministries,	1816 102.7 WMOXJ FL Pompano Beach, Magic 102.7
phone #627-3678, state #25	1905 99.5 WQYK FL St. Petersburg, K, dedic.

I would like to hear from anyone who has had success with indoor antennas. I've had horrible luck,so far,and I'm getting tired of chasing all DX from my parents' place. 73's to all. (It may be unsightly and awkward but you might could bring an outdoor antenna indoors, DB)

Christopher S. Dunne,(NEW ADDRESS:) 21541 NW 8 Ct., Box 81, Pembroke Pines, FL 33029

Equip.: GE Superadio II, whip antenna, Radio Shack 6-31. FM antenna

1/30 tr	2/11 tr
1015 WEJZ 96.1 FL Jacksonville,Lite 96.1	0112 WUFT 89.1 FL Gainesville, jazz
1018 WKQL 96.9 FL Jacksonville, Cool	0118 WTKK 98.5 FL Crystal River, "KTK"
1030 "W-FM" ?? 93.5 Cuba, Santa Clara, "La	0135 WAPE 95.1 FL Jacksonville, Scott
Estacion de los grandes exitos"	Shannon Show
Jax-300 miles, Gainesville-250 miles, Santa	Clara-230 miles or so...73s.

Gus Mancuso, 5615 Inwood St., Cheverly, MD 20785

(From Cordova, MD 1/2 way from DC to Ocean City, MD)

2/9 pm & 2-10 am	2/9, cont.
90.5 WCRH MD Williamsport	106.7 WRKZ PA Hershey, had to null WJFK
92.1 WDYL VA Chester, new handle,92-Lite	107.1 WCDV NJ Long Branch, new calls, local
101.3 WXPZ DE Milford, new station, g	WKLE still silent
103.1 WAFY MD Middletown,local WBEY off	

Brings total to 156 from this spot. Hoping to return in May to fully exploit potential here. Dial very "clean".

SFM editor's notes: KOSU 91.7 of Stillwater, OK finally made it to the air with their new 1030' tower on March 13th. The new signal is believed to be 3 times stronger in Tulsa and 5 times stronger in Okla. City while reaching nearly half of Oklahoma's population.



Submitted by Tom Bryant
249 Todd Preis Dr.
Nashville, TN 37221

O O O S A N D E N O S

'ATE' ON 8?: It always seemed to me that WATE-tv in Knoxville, TN should have swapped calls with WSIX-tv (later WNGE/now WKRN) in Nashville. WATE was on channel six; WSIX was on channel 'ate' [8]...get the picture?

1949 REVISITED: Backtracking to the listing of 1949 stations on the air or under construction; [1/91 VUD] Dennis Park Smith ferreted out another typo...it has KKTV rather than KTTV on 11 in Los Angeles. (The other was KFBM rather than KFMB in San Diego.)

HELP!: Bill Nienadjadly mentioned during a recent phone conversation that a history of tv operations in New York City (including northern New Jersey) would be interesting. I agree, but don't have the resources to adequately research the topic. We've seen a lot of the old calls and sketchy bits of info regarding tv's infancy in 'The Big Apple'..but the surface has barely been scratched. Any volunteers out there to give a hand with this project?

DIAL DINOSAURS: Bill Eckberg sent a virtual gold mine of articles from old publications, and you'll be getting glimpses from that treasure chest every now and then. The first is a look at a "RADIO NEWS" chart published in January 1945. Presumably the list [lower left] is of stations both operating and planned..some of those listed didn't begin operation until several years later. Note the Milwaukee call of WMJT. This may be a typo, or the newspaper may have actually requested those letters; however, I can find nothing to indicate that they were ever used. All available information points to the use of WTMJ-tv when operation began in 1947. Also note the channel frequencies in 1945, compared to the 1948 listing [below/right].

LOCATION	CALL LETTERS	OWNER	FREQUENCY
New York	WNET	NBC	50-56 megacycles
New York	WCBW	CBS	60-66 megacycles
New York	WABD	DuMont Labs.	78-84 megacycles
Phila., Pa.	WPTZ	Philco Corp.	66-72 megacycles
Chicago	WBKE	Balaban & Katz Corp.	60-66 megacycles
Chicago	WTZR	Zenith Radio Corp.	50-56 megacycles
Schenectady, N. Y.	WRGB	General Electric Co.	66-72 megacycles
Hollywood, Calif.	KTSL	Don Lee Bcastg. System	50-56 megacycles
Milwaukee, Wis.	WMJT	Journal Co.	66-72 megacycles

Television Channels

No. of Channel	(Lower TV band) Freq. Covered	Mc.
1		44-50
2		54-60
3		60-66
4		66-72
5		76-82
6		82-88

DING-A-LING: I always enjoy chatting with fellow dxers..particularly about the 'good old days'. If you have a question or want to hash out an idea for a future column, feel free to call. Please observe a couple of simple courtesy requests...call only between 9 PM and 1 AM (CT) ANY night...don't let the phone ring more than ONCE...NO COLLECT CALLS will be accepted. All that having been said, the number is 615-646-2000.

Photos submitted to PHOTO-NEWS become the property of this column and will not be returned.
EDITED BY David J. Nisnen

MAILING ADDRESS:
PHOTO-NEWS
12284 Nice Road
Akron NY 14001-9529

Our first reporter is Jeff Kadet - Macomb Illinois
Equipment: ICOM R7000 with video adapter, JVC & Panasonic monitors. Various Zenith TVs (circa 1978-82). Screened Channel Master 7' dish, PA4975 preamp, 1/2" hardline at 85'. CM 1110 VHF w/t PA1975 preamp, 1/2" hardline at 80'. Winegard 5 element lo-band yagi vertically polarized at 18', RG-11 feed.

W46AC (KTCA-2)
Willmar, Minnesota
365 mile tropo
seen August 31, 1990
at 0601 CDT

Thanks Jeff



Next is a new reporter Bill Nienajadly - Clifton New Jersey (12 miles west of NYC). Equipment: Teknika TVC22 tuner w/t Sharp monitor, Radio Shack U-120 at 80' (rotatable). Winegard AC-4990 preamp and RG-59 coax.

WOIO-19
Shaker Heights-Cleveland, Ohio
394 mile tropo
seen September 5, 1990
at 0100 EDT



WVNE-31
Hartford-Hanover, NH
196 mile tropo
seen October 4 1990
at 0000 EDT



WXXA-23
Albany New York
150 mile tropo
seen October 4 1990
at 0000 EDT

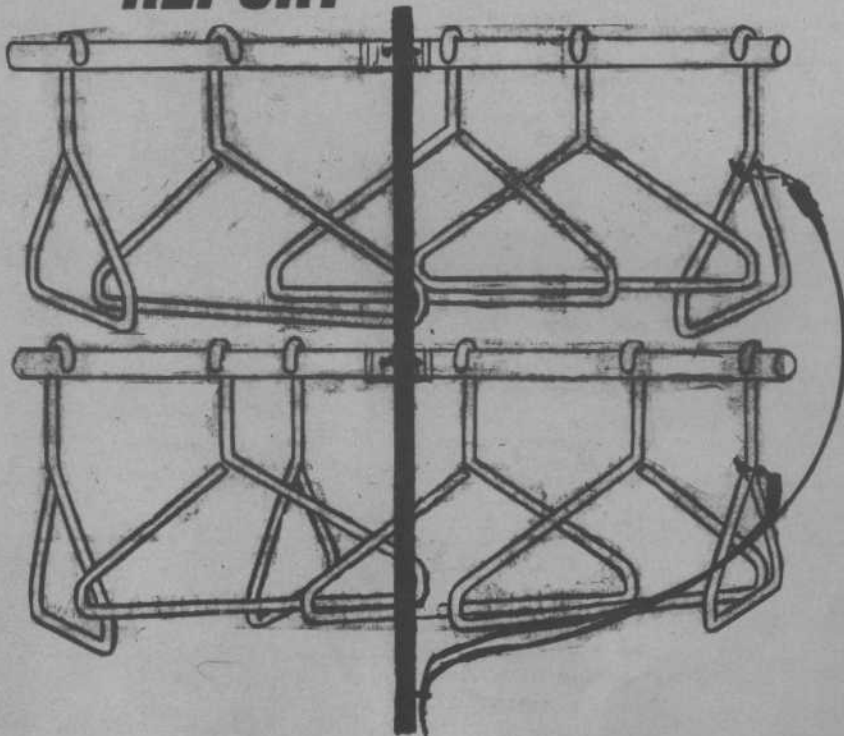
Thanks Bill

Till next time,

DAVE

SPECIAL REPORT

SUPER NEW HIGH GAIN ANTENNA NOW AVAILABLE IS BASED ON A LONG PROVEN PRINCIPLE THAT'S BEEN HANGING AROUND FOR YEARS



by Perry Boulic

I am pleased to report to you on the first new antenna design to become available to VHF DXers in many years. Some engineers say it is probably the only real new idea since the Yagi-Uda antenna concept. I first saw mention of this design in TECHNICAL TOPICS in an issue of VUD. I soon learned that simple "single co-tangers" are now in use all over the world--especially in "grade A" signal areas! Incredibly, the concept may have been accidentally discovered by someone WHO DIDN'T EVEN KNOW ANYTHING ABOUT ELECTRONICS! Rumor has it may have been a college student who broke the monopoly of an old black and white portable one night, and asked a roommate what to do to fix it. "Use a co-tanger, stupid!" said the person--and as if by divine inspiration, or the kind of accident that used to cause people to scream "Come here Watson, I need you!", the new antenna idea was discovered.

Above is the stacked co-tanger array, a broadbanded set of triangular shaped elements that some engineers say is "so incredible that it can't be believed." Is it going to be a "hot" DX antenna? The answer is "yes, if you mount it outside in the sun!" I have no word on the exact gain, VSWR, or front/back and front/side rejection specs as of yet, but it must be FANTASTIC, as design engineers say: "you can't even begin to measure forward gain with it..."

Word has it that several antenna manufacturers are now rushing each other to get this array out onto the market. Even Radio Shack may soon have a version, but as with most of their antenna accessories, it will be plastic instead of the high carbon steel wire that most other versions seem to use. The Radio Shack version will likely be cheaper, and will fall down a lot more often and have less gain, but as with most of their other products, you'll be able to buy a service contract for it.

I plan to get a co-tanger array into the air as soon as they become available--I will report on my DXing results with it as soon as possible--maybe next April!