

Vhf-Uhf DIGEST

The Official Publication of the Worldwide TV-FM DX Association

DECEMBER 1991

**MORE
SUPER
AURORAL
EVENTS!**



WORLDWIDE TV-FM DX ASSOCIATION

POST OFFICE BOX 514-BUFFALO, N.Y. 14205-0514-U.S.A.

OPINIONS EXPRESSED IN THIS PUBLICATION ARE THOSE OF THE INDIVIDUAL CONTRIBUTOR AND DO NOT NECESSARILY REFLECT THE VIEWS OF THE PUBLISHER OR BOARD OF DIRECTORS. WE RESERVE THE RIGHT TO EDIT MATERIAL TO MEET PUBLISHING STANDARDS. UNLESS PREVIOUSLY AGREED UPON IN WRITING, ALL MATERIAL SUBMITTED FOR PUBLICATION IN THE VHF-UHF DIGEST BECOMES THE PROPERTY OF W.T.F.D.A.

REPRODUCTION OF MATERIAL FROM THE VHF-UHF DIGEST WITHOUT PERMISSION OF W.T.F.D.A. IS PROHIBITED. INDIVIDUALS AND OTHER ORGANIZATIONS ARE GRANTED SUCH PERMISSION PROVIDING PROPER CREDIT IS GIVEN TO THE SOURCE.



DEFEAT
MUSCULAR DYSTROPHY
SUPPORT MDAA

Hubert H. Humphrey



first class mail

11/92

WILLIAM N NOLLMAN

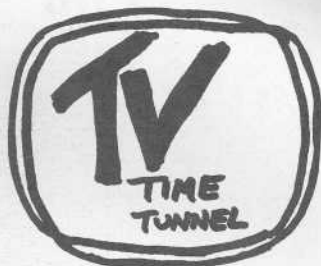
35 NYE ROAD

GLASTONBURY CT 06033



Written and edited by:

TOM BRYANT
849 Todd Preis Drive
Nashville, TN 37221



MERRY

CHRISTMAS

MISCELLANEOUS AND MAILBAG

MOVED...??: In the list of those attending the Convention in Dunkirk, I somehow managed to get Bill Kretschmer moved down to New Jersey! Not so...he's still in Syracuse, NY. Sorry about that, Bill.

EXCELLENT BOOK: Tim Cronin of Worth, IL steered me into a book titled "THE GREAT TELEVISION RACE / A HISTORY OF THE AMERICAN TELEVISION INDUSTRY 1925-1941". The book, written by Joseph H. Udelson, is an excellent overview of the pioneers and developers of television. It includes seldom seen information about early corporate in-fighting, along with a synopsis of regulatory evolution. Those and other elements are skillfully woven together in about 200 pages of well documented text and footnotes. This book is a must for any serious television historian, and can be obtained from the University of Alabama Press at Box 870380, Tuscaloosa, AL 35487-0380 for \$20.00 (shipping included).

PRE CHANNEL ONE: In reading the Udelson book mentioned above, I was amazed to learn that some of the very early tv transmissions were conducted in what we know today as the AM broadcast band as well as in the 'tropical band' (around 2000 kHz). A number of factors brought an end to video transmission on these low frequencies; but while it was taking place, good (by the standards of the time) pictures were often received on a regular basis at distances in excess of 400 miles from the transmitters. Imagine the dx potential of 'skywave' video!

CHANNEL ONE - revisited: Bob Baker of Humboldt, IA writes: "W9XUI Iowa City was not 'Iowa State University' (Ames, IA), but University of Iowa (Iowa City, IA); Formerly 'State University of Iowa'..thus the call letters." [Ed note: My error..I copied the info incorrectly! All other data on this station was correct. I got caught by a Hawkeye's hawk eye!]

WNBT AND WCBW: Jeff Kadet sent photocopies of several newspaper schedules from the New York City pioneers, and you'll see a few of them in a future VUD. Also in the works, a study of the Crosley tv stations.

TAKEN FOR GRANTED?: Perhaps some newer dxers don't know the meanings of the letters and numbers in early tv call signs. Of course, W (later, K; and earlier, N) are prefixes used for U.S. broadcast services. The number (prior to the advent of four-letter calls) pertained to the geographic region of the country in which the station was licensed. The numbers began with 1 in the extreme NE and moved clockwise around the country to wind up with 8 and 9 in the midwest and north central states. The 0 district, not part of the original numerical scheme, was added later. Perhaps the most important part of this system was the letter X following the number. Only experimental stations were so designated. The last two letters were usually selected by the licensee...some for obvious reasons (like W6XDL for the Don Lee Broadcasting Co)...others, like RCA's W2XBS, apparently had no tie-in.

STILL LOOKING: I haven't received much help yet in my effort to borrow old test pattern and/or ID photos. If you have such a collection and access to a copier, please submit them to this column. Old letterheads and QSL's fall in the same category. I'll gladly pay the postage! Thanks!

1991 WTEBA Dunkirk NY
CONFERENCE photos.



Early arrival Joe Cragg
of Texas (on left) helps
CONFERENCE host Bob
Seybold putup a Wine-
gard 5200 VHF antenna
at the hilltop DX site.
djm



You can tell a DXers
car by the number of
radio station bumper
stickers me has from
all over. Well this
DX shack on wheels be-
longs to EASTERN TV DX
editor: Bill Nienajadly
of New Jersey.
m&gc



Taking in a little sun
are (from left to right):
NWS NEWS & CCI editor
Matt Sittel of North
Carolina, Jeff Kruszcza
of Louisiana and Bill
Nollman of Connecticut
m&gc



Talking over radio modifications are (from left to right) ETVDX editor: Bill Nienajadly of New Jersey and Roger Winsor of Indiana.

djn



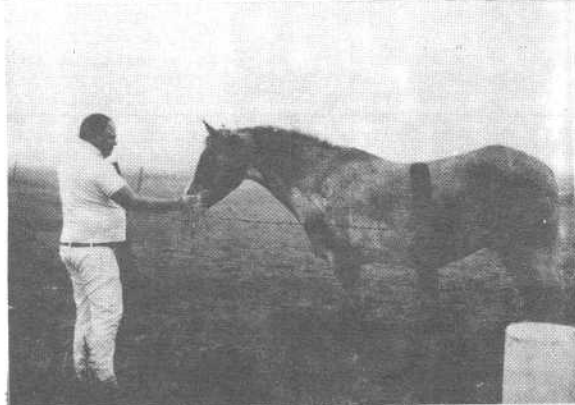
Doing some AM!!! DXing using a homebrew loop antenna are (in back ground) Bill Kretschmer of New York (that's Bill's antenna) next is Bob Zent of Indiana, (in foreground) Joe Gragg of Texas and (standing) Jim Rollins of Virginia.

djn



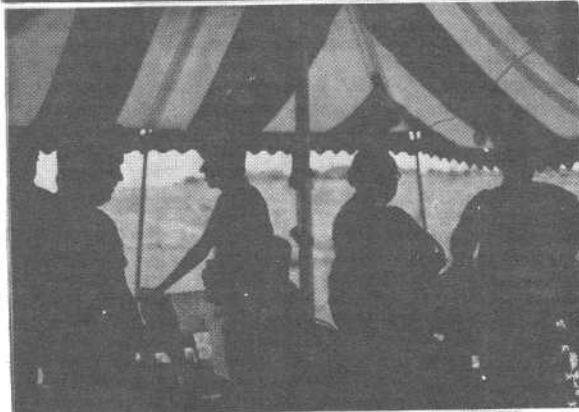
With Lake Erie in the back ground; that's (from left to right) Bill Kretschmer of New York, Bob Smolarek of New Jersey and Northern FM DX column editor, Greg Coniglio of New York.

m&gc



That's Joe Gragg of Texas making friends with one of the hilltop residents. Hope he didn't follow you home.

m&gc



At the hilltop DX site (from left to right) PHOTO-NEWS editor Dave Nieman of NY, NFMDX editor Greg Coniglio of NY, George Green of Ohio, Bob Smolarek of NJ, Bob Zent of IN and Jim Dietrich of Kansas.

m&gc



Again at the hilltop are (from left to right) are ETVDX editor, Bill Nienajadly, NFMDX editor, Greg Coniglio, dBruce Hall of Ontario, Jim Rollins of VA and Bob Smolarek of NJ.

m&gc

Thanks to all who showed up at the 1991 WTFDA CONFERENCE, to host Bob Seybold and to Mike & Greg Coniglio for the conference photos.

Till next time.

DAVE



TECHNICAL TOPICS

3. PLAYING WITH SWITCHES

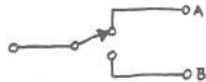
Not long ago, I had a setup with cable TV and antenna inputs, a movie channel from the box supplied by the cable company, and two VCR's. All of this was fed, through switches, to one TV set. To put the system together, I went to the trouble to buy gold-plated connectors and crimp them professionally onto the shortest possible lengths of low-loss coax. The switches were a bunch of Radio Shack "High Isolation Video Switches." When it was all put together, it didn't work! The picture quality on several channels was bad; there was cross-channel interference everywhere, none of the weak signals that I could normally get on the antenna were watchable, and one of the VCR's wouldn't even lock onto certain channels. (This Akai VCR would let you watch a channel for about 20 seconds before it would slowly drift off to some buzzy point between two adjacent channels.)

After all this aggravation, I eventually identified the switches as the source of my problems!

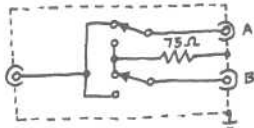
So let's go in the lab and look at some RF switches. There are many types of RF switches. Many are implemented using PIN diodes, which are semiconductors which behave properly at RF, but can be biased "on" or "off" with a simple DC control voltage. These are used in all sorts of consumer gear to avoid having to use more costly mechanical switching. Such switches can be expected to have an insertion loss of 1-2 dB when "on" and an isolation (that is, insertion loss when "off") of 30-60 dB. They can typically operate across an octave or so of bandwidth, although there are diode switches that are carefully designed to work over 3 octaves of bandwidth, for example, 1-8 GHz.

Properly designed mechanical switches exhibit typical insertion loss of less than 0.5 dB and an isolation of easily more than 90 dB, over bandwidths from DC to microwave. (For example, certain types of microwave "coaxial" RF switches fitted with SMA connectors can operate from DC to 12 GHz.) Of course, with mechanical RF switches one doesn't have the ability to electrically or remotely control them unless some sort of magnetic actuator is designed as an attachment. And anything electromechanical will cost more to build and assemble than its all-electronic equivalent.

A good RF switch must not just make or break a contact, however. It must also maintain an impedance match with the cables/lines connected to it. It must not interrupt the shielding provided by the braid of the coax cables which attach to its connectors. It should provide a matched termination (this can be as simple as a



A SIMPLE A/B SWITCH...



...REALLY LOOKS LIKE THIS!

75-ohm resistor) for all unused inputs. Finally, the switch contacts must be designed so that when "off," there is sufficient isolation. (If the switch wiper remains physically close to the live contact, coupling can occur and some RF will leak across the gap. With PIN diodes, the small physical structure has a capacitance which allows RF coupling, hence, diode switches have poorer specs than mechanical ones since it is impossible to make capacitance-free diodes.)

So, back to the lab. I was bound and determined to find out what was wrong with my A/B switches. Well, the Radio Shack models 15-1248 and 15-1249 are real duds! For starters, they aren't even shielded! The PC board has a set of standard slide switches, the

18 element TV aerial
as used by leading rental companies
FOR ONLY **£1.99**
+ 50 p.p.h.

A fantastic item, save money and do-it-yourself. Receive BBC1, BBC2 and ITV on THEY 100 channels, colour and black/white. 18 element aerial with gold reflector for better reception. A proper aerial, usually supplied only by stages. They save and cut out the middle man. An ideal aerial for the person who likes to do it himself. Complete with fitting clamp and instructions. Money back guarantee. The inside or out.

IMPERIAL TRADING
Dept. FT10, 45 ABERDEEN ST., NOTTINGHAM

kind normally used to switch battery power and audio signals, on a small PC board having a ground plane. Blobs of excess solder were supposed to ensure a good contact from the F-59 sockets to the metal on the board. This whole miserable assembly then goes into a plastic case. In my setup I had two of these switches located next to each other; no wonder so much signal was leaking into everything! I used a power meter and a sweep generator to test isolation of the 3-way switch exactly as it comes from the store:

from port "A" to "common" 70dB @ 500MHz / 60dB @ 800MHz
from port "B" to "common" 63dB @ " / 53dB @ "
from port "C" to "common" 49dB @ " / 40dB @ "
from "A" to "B" or "C" isolation was less than 40dB

I also checked insertion loss, and found it to be about 0.5dB at 100 MHz, rising to 2.3dB at 470MHz, and still rising to 3.5dB at 900 MHz. This is not a properly designed RF switch!!!

Amazingly, the less expensive switches sold by R.S. (and not advertised as high isolation) are much much better. At least this model is completely shielded in a pot metal case (an external black plastic covering is just for looks). The 15-1247, at \$4.99, checks out as follows:

	FM BAND: 95-108 MHz			TV CHANNELS 7-13: 174-216 MHz			CHANNELS 14-69: 470-806				
FREQUENCY	100	200	300	400	500	600	700	800	900	1000	MHz
INSERTION LOSS	~0.2	~0.2	<0.5	<0.5	<0.5	0.5	0.6	0.8	0.9	1.0	dB
ISOLATION "switch off"	95	92	89	87	85	84	83	82	80	79	dB
ISOLATION port to port	>95	90	81	77	74	74	78	80	79	78	dB

General Instruments make a very nice A/B switch, model DCS-A/B, which is sold by a lot of shops (including Hosfelt Electronics of Steubenville, OH, for \$4.95). Its performance figures are very similar to the R.S. model checked out above, except that its port-to-port isolation exceeds 100dB across the range from 100 to 600 MHz. If you don't have switches at least as good as this in your DX system, get rid of them right now! (And report all your new loggings to the VUD.)

Never use a switch with less than 75-80 dB isolation in a DX or your family's TV setup. Any switch you use should be completely encased in metal (preferably cast metal, the type doesn't matter). This metal will usually have a plastic case over it for appearance. Good, metal-encased switches will be heavy in your hand, having a noticeable "heft" to them. AVOID any switch having pushbuttons (for example, those by Channel Master)--these are usually poorly designed and inherently low in isolation and high in insertion loss.

That's it for this time. The number 3 at the start of this article is meant to suggest that this is a continuing series of equipment reviews. Parts 1&2 appeared in the April '91 VUD.

73, Tim McVey

DELUXE A/B SWITCH



Mfg - General Instrument
Mfg # -DCS A/B

Two 'F' connector input, 75 ohm, high 90 dB isolation, 5-900 MHz bandwidth, and features two mounting flanges.

No. 51-146 **\$4.95**



Three Input Video Switch

■ Three input push button type coax switch ■ Offers quick selection of antenna, cable, VCR or other input sources ■ 30dB isolation

#33-765.....\$4.95.....\$4.25 (10-up)

Deluxe A/B Switch

■ Two input, 75ohm, high isolation ■ A/B switch for CATV, MATV, MDS, STV and VCR applications ■ Features zinc diecast housing ■ Molded PVC outer case with mounting flanges ■ 5-900MHz bandwidth ■ 90dB isolation "off" ■ Patented design

#33-390.....\$6.95.....\$6.15 (10-up)



CCI unIdentified DX

Matt Sittel
PO Box 21451
511J Wood Hall, NCSU
Raleigh, NC 27607
(919) 834-6053

Deadline: none...just
send something when you
have an unID!

Welcome to the umpteenth revival of CCI! As the newest editor of this column, I plan to run this just like in the past. This is for your unidentified TV and FM DX, as well as any "CCI Aids" that you may want to include. I have quite a few TV Guides on hand, but if you could send along your editions (especially from last skip season) I can have even more data to try to figure out your unIDs. I'll be glad to send you one of my local editions in return if you wish, but "donations" are most welcomed and appreciated. Anyway, here's what I have on hand already:

John F. Combs, PO Box 7581, Tallahassee, FL 32314

1990:

Mon Oct 15 tr ch 10 0500 EDT -- Spanish ECO affiliate, running // XERV-9 during big Gulf opening. Strongly suspect XHX-10 in Monterrey, unless some south TX station like KZTV-10 runs this in the wee hours. Is there anybody who can confirm XHX-10 with ECO? Pat? PTA: Mexico. (John, my listings show these 10's as being off-the-air at 0500 EDT: KZTV, KWIX, KTEN, and KIVE. And KLFY runs country music videos.-mcs)

1991:

Sun Jun 2 Es ch 2 1255 EDT -- SS newscast, appeared locally-produced, though slick. Sports segment seemed to place heavy emphasis on teams in and around Guadalajara. Can anyone confirm a local newscast on XHGH at this time of the morning (1055 CDT)? PTA: Mexico.

Mon Jun 3 Es ch 4 1115 EDT -- Phillips TP, but no ID or date/time like Cuba. At 1150 noted a newscast "Noticero 4" which is believed to be the same station. Suspect El Salvador. PTA: Central Amer.

Mon Jun 3 Es ch 5 1120 EDT -- SS station ID'ing as "Canal 5 -- el lider" and brags about having best programming, #1 in audience, etc. At 1142 roll end credits on novela "La Pasion de Teresa." At 1145 odd sequence as follows: audio of John Lennon's "Imagine" while video switches between 3/4 CB and blank screen. A few minutes later a short program promo, then back to 3/4 CB and start "Imagine" again at the top! Suspect Honduras. PTA: Central America.

Thu Jun 13 Es ch 3 1245 EDT -- "Bewitched" dubbed rather poorly in SS. PTA: Mexico. (I've seen XHY run that on a Saturday at 1030. I would say it was likely them.-mcs)

Thu Jun 18 Es ch 3 0900 EDT -- Start "Zoobilee Zoo." Would be nice if I could narrow this down to only one of KSWK, KLNE, KOET. PTA: Midwest. (I wish I had some TVG's from there to help you.-mcs)

Sun Jul 28 Es ch 2 0004 EDT -- PBS station ending program with puppet that looks like Topo Gigio. ID at 0005 with logo as at left, then into "Eastenders." Strongly suspect KTCA. PTA: MN.

Sat Aug 17 tr ch 61 0851 EDT -- Seedy old "Charlie Chan" movie. Ad noted for Recreational Factory Warehouse. PTA: GA, SC. Characteristics of the opening seem to rule out WDSI (which would have had Fox programming at this time anyway), WLXI (not them-mcs), or WTOG xlters. Probably an LPTV, possibly a Channel America affiliate?

Greg Coniglio, 5100 Glenwood Drive, Williamsville, NY 14221

1991:

Wed May 29 Es 95.1 1740 EDT -- WZMP, Marion, MS, my "Z 95.1" station ID'ed as this.

Wed May 29 Es 102.3 1949 EDT -- urban/AC sounding, ID almost sounded like "Ballin' 102" or "Darling 102". PTA: TX, MS, AL.

Fri May 31 MS 99.1 1125 EDT -- "980 WPHG". Thank you Matt, and also Ed Mitkus and Bill Burrows for help on pinpointing that as Bristol, VA, but who would have this on FM? My only guess is that it was a satellite feed acknowledging an affiliate. Is WPHG satellite? (They used to not be, but I don't know now for sure.-mcs)

Sat Jun 8 Es 99.1 1207 EDT -- "Christian Radio", calls sounded like WSIG. PTA: FL.

Sun Jun 9 Es 94.1 1916 EDT -- KTHK, Okmulgee-Tulsa, OK, my "94.1 The Fox" unID with classic rock ID'ed as this.

CCI (unidentified DX)

Coniglio, cont.

page 2

Mon Jun 10 Es 95.3 2145 EDT -- CBC mono, did not seem to be parallel to CBNM-90.3 which was in at the time. PTA: NF.

Mon Jul 1 Es 104.9 0851 EDT -- "Lite 105", mention of Northwest Expressway. PTA: OK.

Mon Jul 1 Es 98.3 2140 EDT -- "All Hit 98" and country! PTA: Central & Eastern TX.

Mon Jul 1 Es 94.3 2150 EDT -- Country, "Key 94", or "K 94" (accent tough) PTA: TX.

Mon Jul 15 tr 162.55 2100 EDT -- Canadian NWS, several mentions of "Peterborough and the Kiwarthas". DXing from Outwater Park Ridge in Lockport, NY. Also noted 162.475 in Kingston, ON is on, and Watertown on same frequency! (Greg, Bill Hepburn says VEU-671 in Peterborough on 162.550 came on in spring of '91.-mcs)

Tue Jul 16 tr 88.5 2330 EDT -- Rap station, lesser known artists, not commercial rap like MC Hammer, etc. Bad audio, going on and off the air, best due west. Nothing at all fits. Fairly steady signal, when I came back later it was gone, never to return. A pirate maybe? I heard a mention of Buffalo. PTA: Trop to WI, MI, IL.

Doug Allen, PO Box 5646, Woodland Park, CO 80866 1991 DX:

Mon Jul 1 Es 98.1 ???? ???? -- "WQSO" good ID, pirate? (How about WQSM, Fayetteville, NC? What was the PTA on it?-mcs)

Mon Jul 1 Es 106.5 ???? ???? -- "84" at radio center"

Mon Jul 8 Es 92.7 ???? ???? -- "Hometown Radio 92.7". PTA: TN, NC, SC.

Mon Jul 8 Es 89.5 ???? ???? -- WHSS or possibly WDPR/WDPS. Cincinnati weather, "FM 97.1"

Mon Jul 15 Es? 89.5 ???? ???? -- "Nebraska Public Radio" // 89.1.

Mon Jul 15 Es 92.3 ???? ???? -- WPTV, tent. "Carolina's Rock 92" (WKRR, Asheboro, NC fits the slogan. Perhaps they had an ad for WBTV, ch.3 in Charlotte??-mcs)

Thu Jul 18 Es 107.1 ???? ???? -- "107.1 Lite Flite". PTA: Upper Midwest.

Fri Jul 19 Es 98.1 ???? ???? -- "Nice and Easy 98". PTA: OH, PA, Carolina area. (That is definitely WTVR, Richmond, VA.-mcs)

Fri Jul 19 Es 99.3 1810 ?DT -- Country, "99.3 WHEZ".

Fri Jul 26 Es 93.7 1058 ?DT -- "93 Rock" with Sears Pt. Raceway CA ads.

Matt Sittel, PO Box 21451, Raleigh, NC 27607

1991:

Wed May 22 Es 97.9 1207 EDT -- "Q98" or "K98", maybe s format. PTA: AR, OK, TX.

Wed May 22 Es 96.5 1209 EDT -- "Cattle Country". Suspect KECO. PTA: Same as above.

Wed May 29 Es 107.7 1926 EDT -- Regional weather summary which mentioned eastern Michigan and northern Wisconsin. PTA: MI, WI.

Wed May 29 Es 92.7 2003 EDT -- Gospel. "We're here for you-92.7 FM". PTA: OK.

Mon Jun 3 Es 92.9 1301 EDT -- "FM 92" in SS, SS music. Yucatan mention. PTA: Mexico, TX.

Mon Jun 3 Es 103.7 1717 EDT -- Area code 816 mention. Gospel, Jimmy Swaggart on.

Sun Jun 16 Es 95.3 1819 EDT -- Calls ended in "-ZP" or something like it. PTA: IL, IA.

Sun Jun 30 Es 93.5 2030 EDT -- AC format. "Best Mix-Best Variety". PTA: ME, NB.

Sun Jun 30 Es 93.7 2033 EDT -- English CBC feed, // to a 97.9. PTA: ME, NB.

Sun Jun 30 Es 89.5 2120 EDT -- Radio-Canada, // CBAP-88.5. PTA: ME, NB.

Mon Jul 1 Es 95.3 2037 EDT -- "KJ95", AC or CHR format. PTA: MN, WI.

Fri Jul 19 Es 93.7 1715 EDT -- "Porché a 93". Mentioned July 25 as their Independence Day. I was getting very short skip into AL, so this is very likely a double hop.

Fri Jul 19 Es 104.9 1915 EDT -- "105 WD..." then fade out. Mentioned Daphne, AL.

Fri Jul 19 Es 100.3 2012 EDT -- "FM 100", country format. PTA: TX, LA, MS.

Tue Jul 30 Es 94.5 1611 EDT -- SS, in with 5 Tampico FM's.

Tue Jul 30 Es 94.3 1715 EDT -- "94". PTA: FL, AL, MS, LA.

Wed Jul 31 Es 91.9 1700 EDT -- "Moody Radio". Suspect WMBV. PTA: FL, AL, MS, LA, TX.

TV:

Wed May 29 Es ch 3 1530 EDT -- Start of "Santa Barbara". PTA: TX.

Wed May 29 Es ch 3 1604 EDT -- "Tiny Toons" at 1600, "Tom and Jerry" at 1630. PTA: TX.

Mon Jun 3 Es ch 2 1159 EDT -- Woman saying that the station needed \$9,000 by June 30th. Mentioned "5086" as if it were a zip code or the last 4 digits of their phone number. Into "3-2-1 Contact" at 1200. PTA: TX.

Mon Jul 3 Es ch 2 1300 EDT -- News with Linda Edwards. Very plain looking 4 logo in a square. PTA: TX.

Wed Jun 12 Es ch 2 1438 EDT -- "Accion Deportiva" on. PTA: Mexico.

Tue Jun 25 Es ch 2 1042 EDT -- "Sally" on. A "Cosby Show" promo plus a logo that looked like a number 28. PTA: ??

Fri Jul 5 Es ch 2 0910 EDT -- What looked like a Phillips TP, with something perhaps written in the middle. KBTX, KPRC, KATC in. PTA: TX, Mexico.

Thu Jul 18 Es ch 4 1930 EDT -- "The Challengers", PTA: KS, NE.

Mon Jul 29 Es ch 2 1727 EDT -- SS singing with Fernando Villalova. Ran "La Prometida Esta Aqui" across the bottom of the screen. PTA: Mexico.

NORTHERN FM-DX

GREG CONIGLIO
5100 GLENWOOD DRIVE
WILLIAMSVILLE, NY 14221

For DXers in: MA, NH, VT, CT, MA, RI, NY, PA, NJ, OH, MI, IN, IL, WI, MN, IA, NE, SD, ND, MT, WY, ID, WA, OR, AK, Canada
DECEMBER 1991 → DEADLINE: The 5th → LOG CUTOFF: 2 months from when mailed.

Season's Greetings

Not much to report this time around. The disappointing fall tropes season certainly has not improved. Of some interest was a surprise E-skip opening on November 5 (and 6th), plus several days of good aurora. Of special note was November 8, which really lit up the sky in some areas, and according to some, it was just as good, if not better than the famous opening of March 13, 1989. It has been a very busy month for me, so I may not get to finish all reports in time for this month. If you sent in a report on time that does not appear, I apologize. It will be given priority next month. I hope everybody has a very Happy Holiday season! On to the DX!

MIKE CHERRY - BOX 631 - GANGES, BRITISH COLUMBIA V0S 1E0 (604) 537-5201

PDT, @ means mobile

AUGUST 1991 DX

19 Tr
0710 KTEL 93.3 WA - semiloc. KUBE off, k, \$
0715+ Yakima/Tri-Cities FM's in strong

SEPTEMBER 1991 DX

2 Tr
2114 KQBE 103.1 WA - FM 103 ID and AC mx
2117 KPQ 102.1 WA - Q102 weather
2133 KATS 94.5 WA - DJ with phone in caller for contest, \$, sports

9 Au

2201 KKPL 96.1 WA - ID, wx, prev. tropo
2213 KCDA 103.1 ID - Country 103, k, weak



What a surprise getting KCIR twice within a month via meteor-scatter. KSER isn't super strong here, I usually listen to it in mono, because its just too noisy in stereo and just barely lights the indicator. KZAZ finally made it on the air and I can get it by nulling out CBYF Chilliwack, BC which is more or less in the same direction. This trick works better than trying to point the beam exactly at KZAZ. Hope everyone has a good Xmas and that '92 brings ya lotsa DX!!! 73s, Mike VE7SKA

GUS MANCUSO - 5615 INWOOD ST. - HYATTS, MARYLAND 20185

For what its worth: (10/91 VUD). Mike Hawk of Nebraska (Omaha) got Tampa via skip on August 23. At the same time Matt Sittel in Raleigh, NC got Central Texas. Halfway between Omaha and Tampa is virtually same place as halfway between Raleigh and Central Texas. At same time George Greene in Akron gets Corpus Christi-San Antonio area. Half way point between those two points is only 150 mi. from other spot (where Hawk and Sittel lines intersect). - Gus Mancuso.

P.S. Ralph Strobel in Indiana, his "line" comes close, too.

P.P.S. Am saying something anyone doesn't know already??

STATION NEWS: CFT 101.1 in Fort Erie, Ont. has reportedly switched calls to CKEY (old 590 Toronto calls) but I have heard no change, they do not use any calls anyway. Format is still adult standards. In Central Texas, KNNC 107.7 Georgetown-Austin is on the air, with a modern rock format and a "K-Nac" slogan. Another format change on the same frequency, same format: 107.7 in Seattle is now KNNN "The End" and modern rock as well. If you are getting skip or tropes to the northeast, and hear an album rock station on 96.9 with a "97 Rock" slogan, be careful. While WGRF Buffalo certainly uses that slogan, now Braddock-Pittsburgh is WRRK "97 Rock" as well. WHOT-FM 101.1 in Youngstown, Ohio is taking more of a rock 40 approach. In Houston, 92.9 is still KKBO but a vastly different format: easy country. Two big top 40 stations hit the dust recently: 94.9 in Arlington-Dallas is now KODZ, "Oldies 94.9". Longtime top 40 94.7 Chicago is now WLS-FM and talk radio // to the AM 890. 93.9 Windsor, Ont. is back to CKLW-FM, and using the "classic jingles". WJMX 98.9 in Upper Arlington-Columbus is now country. Another change in Columbus: WBNS 97.1 is now "Oldies 97.1". An FM network of stations in Colorado has been formed: KZYR Vail, KSMT Breckenridge, KSNO Aspen, KGUC Gunnison, KKMV Steamboat Springs are simulcasting hot a/c. CKFM 99.9 "Mix 99.9" in Toronto is playing a wide variety of music under the rock spectrum, from dance and modern to a/c, classic rock, mainstream pop, etc. 95.1 Charlotte, NC is back to top 40, with the call letter WAQQ.

Happy Holidays! Greg

Northern FM DX

Happy Holidays!!

December 1991

Bill Nienajadly PO Box 2999 Clifton NJ 07015-2999 1-201-478-3044 no collect calls please

Sorry at this time I really have no FM DX to report, but if I may I'd like to talk about the fact that the 110 khz filters are in stock at Digikey. Last week (today is 10/20/91), I finally received the 110 khz filters from Digikey, after a 3 month wait. It was worth the wait. I had the opportunity last year to use ONE 110 khz filter thanx to Bill Burrows, who, kindly sent one up this way via Murata. But, as most of you know Murata, at the time, had the policy of high minimum order (you needed to buy 250 filters for a minimum). But with Digikey there is no minimum, I now have several to play around with, and here is a comparison test between TWO of almost same Audiovox car radios. Both of course are analog.

Subject: Audiovox car radio (s), both AFC defeated. One radio is a plain AM/FM Stereo and the other one is a AM/FM Stereo 8 track. Both have seen better days. But check this out!

Both radios at my house connected up to a 12 volt power supply and to a Radio Shack 6 element antenna, w/rotor @ 80 ft with a 10 db post amp. 12 miles from NYC.

Radio # 1 with Two 110 khz filters: gets all available adjacents, despite it only has two filters, sound quality distorted somewhat, best described as subdued sound, Amazing selectivity! Gets WRCH 100.5 Pointed right at WHUD 100.7 & next to Z-100 (100.3). No splatter noticed at all on other sandwich tests, Sensitivity seems a bit down but not a major problem really, the adjacents are very quiet, so maybe this gives the effect of loss of sensitivity. Was able to remain splash free when WOGL 98.1 Philly faded, this was adjacent to WSKQ 97.9 NYC and WKJY 98.3. WHFM 95.3 faded and no splash from 95.5 WPLJ & WRKI 95.1. I highly recommend this set up and I would say use this with a 10 db car amp, You will have no problem with selectivity at all, and driving around you'll be able to pick off that weak tropo station with ease. The subdued sound quality could pose a problem though, To me its more than worth it. If you live with many strong semi-locals and close locals, this would work better than the 150/110.

Radio # 2 with one 150 & one 110 khz filter. Gets most adjacents, but not all.. Pointed at WHUD 100.7 it could not get WRCH (100.5) like the other radio did. Could barely get WHFM 95.3 next to WRKI 95.1 pointed at WRKI (as the other radio did with no problem) Also next to local 95.5 WPLJ. As the other radio, it got Philly, Hartford-Reading, adjacents with no problem, but for the "real sandwich situations" it had problems. Sound quality sounded better, and it seemed to be more sensitive. But when the signal faded on the adjacents, some splash, not major though, was noted, WOGL had some minor splash when the signal went into fades. This radio modified with the 110 and 150 khz filters would be really good during a E-skip opening and would do very good during a tropo opening and would excell all around and the sound quality makes it a plus but there could be some problem as you could miss a station or a couple due to the "sandwich problem". Could this set up work for you? How bad is your area? If you live a dozen miles from the transmitters, this will work fine. If you must get every station that is out there then use the 110/110 setup.

Still this is a darn good setup!

This comparison test is not scientific, but it should be a good guide nonetheless. If you are considering using a Digital car radio, get a Kenwood model 430. Rich Shaftan modified his radio with the 150's and says he gets WSTW 93.7 Wilmington, Delaware ...on the George Washington Bridge! Is that a good car radio or what? Im just wondering what results he would have with the 110's! Also give credit to Bill Nollman finding all the improvements and new modifications for the Pioneer Supertuner car radio! I talked to him the other day and he said he found still another modification! Get this, he found that 'blank space' on the digital display on the Supertuner and added a missing DIODE (rings a bell doesn't it) and is now able to tune 95.5 in 50 khz increments! Ex 105.95 106.00 -etc!
missing space

I will update on the success of the 110 khz filters, I'd like to see your success' too!
Goodxing! Bill *Bill*

NOTES: In the Albany area the simulcast between WSHZ 98.3 and WSHQ 103.5 has broken down. WSHZ is still oldies, but // WTRY 980 AM. WSHQ has gone to a soft a/c format. In Buffalo, WUFX 103.3 "The Fox" has added much more current album rock, change from op to rp. In Kansas City, KMBR 99.7 is now KLTH "Lite". Another easy listening is gone. News from California: KHTX in Monterrey has gone to KPIG and country, KZOZ San Luis Obispo to classic rock. 107.5 Boyertown's brief stint at a/c has failed; they are going back to religion, WBYN. An odd simulcast arrangement in Lubbock: KKIK 93.7 is reported to be simulcasting non-commercial religious KAMY. Toledo should soon lose a top 40 as WRQN Bowling Green becomes "Oldies 93.5". In Denver, 100.3 is back to its old KMJI call letters. In Portland, Maine. WCSO 97.9 changes slogan from "Coast 98" to "Ocean 98", because of complaints from nearby WQSS Camden, Me. "Coast 102.5" in St. Louis "V100" KFAV is a top 40 with adult slant. Brownwood, Texas 104.1 calls are now KXYL-FM.

DAVE NIEMAN-12284 NICE RD-AKRON NY 14001-9529

Equipment: Carver TX-11 IF filter modified, CM Stereo Probe 9 at 40'. Alliance HD-73 rotor and RG-11 coax. New loggings are underlined. New call: [KKKK].

September 1991 DX

9 troposcatter
1050 WIVN 94.7 NY Deposit, format was mr or o
not sure. \$?? 163
12 tropo
0022 WCLR 95.7 OH Piqua, "CLEAR 95.7"+call, b\$
ex-WPTW 358
what a bad two month period for DX. Dave

OCTOBER 1991 DX

8 troposcatter
1349 WZXR 99.3 PA South Williamsport, calls
used often, r\$, ex-WFXX 142
17 tropo
0138 WVCR 88.3 NY Loudonville, call, p\$
(WAER Syracuse off) 227

DAVE NIEMAN-HO STA GEH RD-ROCK CITY NY

Equipment: Technics ST-8080, Antennacraft FM-10 at 10' and RG-6 coax. All new to Rock City log.

September 1991 DX

22 tropo&scatter groundwave
1115 WVCS 91.9 PA California, "FM-92"+call, r\$ 158
1130 WJED 94.5 NY Buffalo, call, c\$ 46
1156 WHWK 98.1 NY Binghamton, call, \$ 140
1200 WJTR 90.9 MI Detroit, ID, t\$ 240
1219 WRQX 107.3 DC Washington, "MIX-107.3"
rm\$ 227
1300 WJRT 91.1 PA Jackson Township, ID w/WRTI,
WJAZ, "JAZZ-90" j\$ 167

October 1991 DX

5 tropo&scatter
1126 WYRK 106.5 NY Buffalo, call, k\$ 61

IF modified the Technics tuner by replacing two of the four ceramic filters with 150khz. Any more 150khz filters and there was a noticeable loss of sensitivity. ETVDX editor, Bill Nienajady, sent me two 110khz filters which I'll try in the Technics. Dave

October 5 Tr&TrS continued

1132 CKGL 96.7 ON Kitchener, call, k\$ 142
1142 CBCP 93.5 ON Peterborough, CBC RADIO, t 160
1253 WQMU 103.1 PA Indiana, call, r\$ 102
13 tropo
1210 CFMP 101.5 ON Peterborough, "FM-101"
mr\$ 160
0109 CBBP 103.9 ON Peterborough,
CBC \$, c\$ 160
27 groundwave
1219 WJED 90.9 NY Alfred, call, s\$ 37
back on for school year



WILLIAM R. HEPBURN - 35 LOCKWOOD RD - BRAMPTON ON L6Y 4T7

Equipment: modified JUC R-X330U w/indoor dipoles

(EDT)

SEPTEMBER 1991

13 IR
0305 WQBR 93.5 NY Ithaca 185
18 IR
0251 CIXX 106.5 ON Owen Sound 83
(FM-106.5 non-ID)

26 GW

---- CFRU 93.3 ON Guelph 23
(was never heard in Mississauga)

28 IC

2039 CBO 91.5 ON Ottawa, mono 225
(u/WXXI, ex-AM 920)

OCTOBER 1991

18 IR
1854 WXCX 102.7 MI MtClemens-Det 170
(ex-WKSG)

19 IR

0124 WOUR 96.9 NY Utica-Rome 235
(25 db)

21 IR

2157 WUKS 92.5 OH Toledo 255
2204 CCKLW 93.9 ON Windsor 185
(ex-CKMR)

26 IR

0354 WJJA 89.7 NY Jamestown 107
(10 db, // WNED 94.5)

(EST)

29 AU

(10-15 db noise floor across FM band)
0344 KFUD 99.1 MO Clayton 645
(10 db, Concert-99)

0410 CJMY

102.7 PQ Val-d'Or 325
(10 db, FF)

30 IR

1154 WUQA 105.1 NY DeRuyter-Syr 200
(20 db, ex-WOIV)

31 IR

1339 CIME 94.9 PQ Hull-Ottawa ON 230
(FF, CKQT off air)

Comments: Highlight of October was my first IDENTIFIABLE Auroral DX. A real test of patience -- signals garbled. Audio very distorted and bassy sounding. Mono signals just barely above the elevated noise floor usually associated with AU. Until I can put up a tower I'm using one set of rabbit ears & one vertical dipole for antennae up on the 2nd floor.
73S & Good DX, Bill.

RALPH STROBEL - 106 E. DAVIDSON STREET - MUNCIE, INDIANA 47303

Equipment: McIntosh MR-78 FM Tuner with two CM Stereo Probe 9 antennas and rotors at 38 and 36 feet above ground with phase box built by Andy Bolin - Charleston, IL

September 1991 (CDT)

3 MS
0051 WJIS 88.1 FL Bradenton 892
3 Es (brief)
2302 KLUX 89.5 TX Robstown, b\$ 1108
2302 KOIR 88.5 TX Edinburg, l\$ 1210
4 MS
0200 WKRY 93.5 FL Key West 1100
5 MS
2238 KXIA 101.1 IA Marshalltown 410
14 tr
0000 WBUK 107.5 OH Fort Shawnee, o\$, 75
"Oldies-107.5 - The Big Buck"
22 tr
0200 WJAA 96.3 IN Austin-Seymour, 100
op\$, Equipment tests
0400 WMAW 88.1 MS Meridian, ID 570
22 MS
1920 WJIS 88.1 FL Bradenton 892
October 1991
5 MS
0302 WKRY 93.5 FL Key West 1100

October 1991 (cont'd)

7 MS
0432 WMTO 93.5 FL Port St. Joe 717
17 MS
0251 KWVG 93.5 NE Columbus 632
24 GW
1400 WHHH 96.3 IN Indianapolis, rs\$, 50
"Hoosier-96," Equipment tests
25 MS
0231 KGNZ 88.1 TX Abilene 961
???? WJIS 88.1 FL Bradenton 892
26 MS
0234 WKRY 93.5 FL Key West 1100
27 MS (EST)
0602 WKRY 93.5 FL Key West 1100
0653 unID 93.5 ?? ? ??
29 tr
0057 WONB 94.9 OH Ada, op\$, "Rock-95" 90
s/off, OH Northern University
November 1991
1 tr
0242 WFEN 88.3 IL Rockford, g\$ 223

Meteor Scatter Results:

S/3 WJIS "...WJIS...Wayne Watson in concert - Victory Assembly of God, September 8th..."
S/4 WKRY "...You're listening to Key-Light Jazz with Simon on WKRY Key West, Florida's Key-93.5..."
S/5 KXIA "...It all happens at the Marshalltown High School audi..."
S/22 WJIS "...East of Bradenton, Sunday Worship, 10:30 a.m..."
O/5 WKRY "...WKRY..."

O/7 WMTO "...George Michael...fresh new hits and music on WMTO..."
O/17 KWVG "...Join me weekday mornings... .WMG..."
O/25 KGNZ "...KGNZ..."
WJIS "...chapel in Sarasota. Call 359-1050 for details..."
O/26 WKRY "...listen to it weeknights at six and all day Sunday only on Key-93.5..."
O/27 WKRY "...Sunday on Key-93.5 FM..."
unID "...Classic Rock - Z-93..."

When my second CM Stereo Probe 9 was installed last April, I should have replaced the old one. There is a drastic difference regarding the gain of both antennas. It is my understanding that the CM antennas are now being made with steel rivets, rather than aluminum. In about five years the rivets have rusted, with considerable gain being lost. One gradually loses gain over a period of time and it goes unnoticed. Next April I'm hoping that Andy and Dennis can stop here on their journey to the Dayton Ham Fest and replace my old antenna. The gain of both antennas should then be fairly equal.

Why am I camping out on 93.5 looking for meteor scatter? The only state in the east I have never heard is Delaware. WZBH "The Beach" in Georgetown, DE on this frequency is my only hope. I'm hoping that WZBH is on the air 24 hours a day. If it is not, will someone please be kind enough to send me a postcard and inform me? As one can see, I keep getting Key West, FL by MS on 93.5 - six times to be exact.

This has to be the poorest fall tr season I've ever seen. There has been no good reception as in previous years. Most recent loggings have been stations new to the air in this part of the midwest. Perhaps some December Es will find some antennas.

The new "Hoosier 96," WHHH Indy, on 96 dot 3 (as their DJ's announce it), began broadcasting 24 hours on Monday, October 28 at 0600. I set my alarm clock and got up for their first official s/on and announcements which were taped. WHHH has a temporary antenna system atop the Bank One building in downtown Indy. The permanent antenna array should be ready for use sometime in November. The signal does not get out real well at fifty miles. I can easily get Chicago, Columbus, OH, and even Detroit and Murfreesboro, TN at times. On a car radio WHHH is barely audible here. Their music is a mix of top 40, as well as older dance music. Sounds as if they are looking for a young audience. The station manager and DJ's are all Indy people who have previously worked at other stations there. Merry Christmas to all!

73-Ralph

SOUTHERN FM DX

Danny Buntin
1312 N. Skyline
Stillwater, OK 74075

DEADLINE: 14th

DECEMBER 1991

SOUTHERN FM DX is for reporters from: AL, AR, AZ, CA, CO, DE, FL, GA, HI, KS, KY, LA, MD, MO, MS, NC, NM, NV, OK, SC, TN, TX, UT and DC. Happy DXing and report soon!

FALL TROP STILL DOWN, BUT ES AND AU COME AROUND SOME.

With the fall trop season still languishing so bad, DXers had to resort to the other modes to find better luck. Efforts in doing so netted at least one Es opening for both October and November. And the aurora made a renewed comeback or two in the South, reaching as far south as Texas. On Nov. 8th the Northern Lights brought out the Oklahoma City fire dept. to return to an office building fire recently put out. Callers living in the area feared the red glow in the north meant the fire had rekindled. DX-wise no Au reports in yet covering that particular date. However some Au DX was reported for Oct. 28th. At least one reporter got in on some meteor scatter.

In reference to last month's comments, which month in 1973 did Glenn Hauser report in with virtually 6 pages of FM Es? Answer: August, covering 6/5 to 6/7, 1973.

Matt Sittel, P. O. Box 21451, Raleigh, NC 27607 EDT/EST
Equipt.: Yamaha TX-900U, Archer 6-bay FM Antenna, Archer FM signal amplifier, rabbit ears.

Raleigh, NC DX:	11/5 Es
10/11 tr	1552 KPLX 99.5 TX Fort Worth, K-Plex 801
0934 WJFK 106.7 VA Manassas, calls 217	1554 KISX 107.3 TX Whitehouse, calls 697
10/24 tr	1554 KOAJ 106.1 TX Denton, The Oasis 777
0849 WCUJ 103.1 VA Culpeper, calls 190	1557 KIMJ 104.1 TX Tyler, ID 699
Cookeville, TN DX:	1559 KGLY 91.3 TX Tyler, ID 699
0855 WMSU 92.7 MD Prince Frederick 224	1605 KOXE 101.5 TX Brownwood, calls, k 917
11/5 trs	1625 KWMM 97.9 TX Dallas, lite 769
1400 WUAL 91.5 AL Tuscaloosa, ID 237	D/FW ments.
Knoxville, TN DX:	1728 KXYL 104.1 ?? ??, calls heard
11/5 Es!	Kingsport, TN DX:
1537 KIXY 94.7 TX Big Spring, calls 1042	11/5 Es!
1539 KZPS 92.5 TX Dallas, calls 769	1814 XET 94.1 NL Monterrey, Super T 1302
1549 KEGJ 97.1 TX Fort Worth, Eagle 801	1814 XHSRO 92.5 NL Monterrey, NL ment. 1302

Skip in November? I wouldn't have believed it had I not heard it! The signals were solid on this opening, making IDing them fairly easy. And once I thought things had faded when I got home and checked again, I was shocked to find skip back after the MUF seemed to have dropped out of FM! I'm not complaining, although it would have been nice to have been in Raleigh to log some of this. '73's.

Doug Allen, w2crs, P. O. Box 5646, Woodland Park, CO 80866
Equipt.: Onkyo T 4087 and various Pioneer tuners (all IF modified) FM-13 at 50 ft.

10/17 ms	10/28 aurora!
0823 KLDE 94.5 TX Houston, area event calendar, 20 sec. burst	2230 WLAV 96.9 MI Grand Rapids 1051
10/22 ms	2240 WKLO 94.5 MI Holland, ID 1030
0730 WGGZ 98.1 LA Baton Rouge, wx	2330 KKEZ 94.5 IA Fort Dodge, ID 632
0733 CBUF 97.7 BC British Columbia, FF	2339 KGGG 94.9 IA Des Moines, ID 633
0752 WRBH 88.3 LA New Orleans, readings for the blind	2352 KOYB 98.3 MN Spring Grove, ID 760
	KQOYt 95.5 MT Butte, in garble of aurora fuzz!

Despite very warm weather until someone pulled the switch on the 25th, no tropo noted, but friend Greg, WQOP, in Topeka picked up Burlington and Colorado Springs on 7/21 using an IF modified TX 9100. I didn't monitor that morning. Darn! From my observations of others, the Orionids shower, supposed to peak on the 22nd, didn't show up! Nothing more than random meteors. Weatherwise, flowers in the garden were blooming and reblooming until the 25th. I looked forward to a lot more outdoor antenna work, but it's been below freezing with snow ever since with ten inches on the ground at end of month. The real excitement this month was the extraordinary high solar flux and the solar storm of Oct. 27-29 which brought aurora to the southern latitudes. The declining solar cycle produced some of its highest flux readings with the MUF above 50 MHz on many occasions including very strong openings the last few days of the month. I worked many stations in the Caribbean, South America and Pacific areas on 50 MHz. TV DXing must have been exciting, too! The aurora was accompanied by A index readings of 100+ and K index of 7, a sure sign of aurora. The two or three times that happened in the past three years, I didn't monitor FM, but I caught this one! There were so many stations competing on my open frequencies that IDing was difficult. Also aurora refraction usually causes a very muffled sound. And so it was except for KKEZ, which was in very clear for almost cont.

SOUTHERN FM DX

Allen, cont.

DECEMBER 1991

an hour. All the above aurora propagated stations appear to be all time distance records! During the period when I was hearing Michigan, I worked eastern Indiana on 14 mhz, one of my longest two meter aurora contacts. The second best meteor shower of the year, the Gemnids, will occur December 10-14 and provide excellent early morning opportunities for ms DXing. Strong possibility of more aurora, too Have fun and 73.

Christopher S. Dunne, 21541 NW 8 Ct., Box 81 Pembroke Pines, FL 33029
Equipt.: JVC RX302BK mod. w/150kHz filters, GE Superadio II Mod. w/150kHz filter, Archer 6-element FM antenna.

What started out as a dry DX period was interrupted by rare October Es with MUF about 100 mhz!

9/12 gw	10/20 Es
0000 88.3 FL PIRATE, "Electric Radio", "Miami", "Harris 1k" tx - DJ says also on 91.7 but no hear. ??	1820 \$KLSI 93.3 MO Kansas City, "Mix 93" 1140
9/13 tr	1824 KFKF 94.1 KS Kansas City, ID 1140
1015 WFTT 89.5 FL Melbourne, ID, not hard to get; I just never concentrated on 89.5 here. 150	1826 SKLTH 99.7 MO Kansas City, ID 1140
10/7 tr	1930 \$KYFW 88.3 KS Wichita, ID 1210
2100+WGYL 93.7 FL Vero Beach, calls NOTE NEW FREQ. 10/13 gw	1933 \$KTTS 94.7 MO Springfield, 1010
0040 88.3 FL PIRATE, "Radio X", eclectic j. I doubt same as "Elec. Radio"	1939 \$KJTY 88.1 KS Topeka, "Joy 88, "...in Topeka", CST ment. 1185
	1943 \$KWFC 89.1 MO Springfield, 1010
	1945 \$KNGM 91.9 KS Emporia, Emporia ment. 1180

Also...Thanx to Frank Merrill for his ID of KLRK 104.3 as KMCR/KLRK. This explains my logging "KLRK 103.9" a while back as in reality KMCR Montgomery City, MO @103.9. Didn't mean to throw anyone off!

Also...a note on March '91's Super Tr: also I heard WDEN 105.3 Macon GA @ 475 miles. In October I phoned them, and a nice DJ there QSLed me confirming something I heard ("Rowdy Country").

Gus Mancuso, 5615 Inwood St., Hyatts, MD 20785

From Cordova, MD on eastern shore:

10/26 tr (EDT)	10/27 tr
1800 WYFU 100.1 VA Ashland	0715 WAVV 95.1 NJ Atl. City, null on WMGK
2031 WMYK 92.1 NC Moyock, best freq. here, now have four.	0720 WQXR 96.3 NY New York, 2nd Big Apple (Went back to bed)
2200 WFOS 88.7 VA Chesapeake	1000 WYNY 103.5 NY New York (Lake Success)
10/27 tr (EST)	1018 WRAR 105.5 VA Tappanhook
0700 WRTY 91.1 PA Jackson Township, simulacasting w/WRTI 90.1 Phil.	1110 WUDE 101.3 VA Hampton
0701 WPLJ 95.5 NY New York, first NYC	1710 WNNY 100.9 VA Warsaw, tough null on local WAAI
0711 WWOI 102.9 VA Norfolk, null on WMGK	1723 WHXT 99.9 PA Easton

Near perfect Indian summer conditions, warm temps. with some fog to boot. 13 this weekend are most added on any trip here. Totals 184 included 3 from another house about 25 mi. n.ne. of here.

Ever notice that there seems to be 2 kinds of Es? Sometimes everybody gets reception from same place, regardless of where they're at. other times like 8/23 you can pinpoint the "cloud". Guy in Nebraska gets Tampa, man in NC gets so. TX. You line up and get a perfect cross w/four 600 mile arms meeting over n.e. Mississippi.

Danny Buntin, 1312 N. Skyline, Stillwater, OK 74074

Equipt.: Onkyo T9090, Channelmaster Probe 9 up 32 ft., with rotor.

8/18 gw	1900 KMSI 88.1 OK Moore-Okla City, ID, g
10/19 gw	1940 KWKS 107.9 KS Winfield-Arkansas City "WKS", ads, wx
10/20 Es	1331 WZZR 92.7 FL Stuart, r, ad, "ZZR"
	1304 WKPX 88.5 FL Sunrise, ID
	1306 WZTA 94.9 FL Miami Beach 1250

Nice to get a dab of some off season Es after not hearing or seeing much of it last summer.

I wish every one a very Merry Christmas and hopefully a very DXful new year 1992.



EASTERN TV-DX

Bill Nienajadly
PO Box 2999
Clifton NJ 07015-2999
1-201-478-3044 no collect
Deadline Jan 8 1992

December 1991 3 Month cut off Deadline Jan 8 1992

Before I get right into the reports, I'd like to headline a few items. First, if anyone objects with the real small print and the new format of four columns in ETVDX, write me a postcard. If I get at least 3 complaints, then I'll go back to using the wider style. But the newer format really saves space. Anyone looking for a VCR with a defeatable mute? See Eric Voytko's report. Eric sent a channel America list which I have sent to HQ under a special report, and maybe it will be in the VUD in a month or two. Joe Fela of NJ reports LPTV in New Brunswick NJ on ch 36, runs at nite on Fri, Sat & Sunday with Indian programming.

On the DX front: Solar Flare Activity is up again this year, November 8th had Super Aurora and resulted in E-Skip later in the evening. It happened 2 days earlier on Nov 6th with AU-induced E-skip and one report from Ed Phelps had E-skip to ch 3 on that date. Very Strong tropo activity happened several days from Oct 23-27th in the Northeast with a stagnant high pressure system over the area. The longest distant tropo report is from Michael Hollis in Florida who received Super Gulf tropo from....920 miles via XHFV ch 9 in Mexico!

Don't forget December E-skip and Meteor scatter that happens in this "off season month".

Michael P Hollis 40 Lakewood St Mary Esther FL 32569

1988 Sanyo 19" Color TV, Channel Master Crossfire 3617 VHF, 7' Finco Dish UHF. Winegard Amps & mounted on 30' tower.
-ALL TROPO LOGGINGS-

8/11 2230 XHFV 9 MX 920	8/12 0525 KHDU 11 TX 530	8/12 0550 UNID 9 MX	8/12 0700 KEDT 16 TX 700
2246 XERY 9 MX 790	0530 KETH 14 TX 530	0626 KSAT 12 TX 740	0701 KORO 28 TX 700
8/12 0505 KHTV 39 TX 530	0530 ALL VHF/UHF NEW	0627 KRIV 26 TX 530	0730 XHAB 7 MX 760
0506 KHDU 13 TX 530	ORLEANS STATIONS	0641 KHSH 67 TX 520	OR XHAR 7 MX ?
0508 KXTH 20 TX 530	0531 KBMT 12 TX 470	0658 UNID 27 TX ?	
0510 KLVN 45 TX 570	0532 KZTV 10 TX 700	(ELPB-EDUCATIONAL)	1004 UNID 22 MX or TX ?

Nice opening into Texas and Mexico on the 11th and 12th. First decent opening since last spring.

Tom Bryant 849 Todd Preis Drive Nashville TN 37221 CDT

-ALL TROPO LOGGINGS-

10/14 2100 UNID 46 MD or KY?	10/14 2132 WTVQ 36 KY 195	10/14 2151 WAPT 16 MS 323	10/14 2351 W35AH TN 112
2126 WDKY 56 KY 172	2132 WKYT 27 KY 195	2230 WJLA 33 LA 467	
2130 WKLE 46 KY 190	2140 WGRB 34 KY 117	2305 WLPB 27 LA 462	2359 WJMT 30 TN 175

Between vacation and being out of commission with an allergy bug, I only managed to troll in one night of good tropo...but it was a doozie. 27 & 33 from Baton Rouge were complete surprise, and 16 from Jackson, MS wiped out 16 from Jackson, TN! WJMT logged with local WMT on the air, but the Memphis 30 knocked out WMT in a null. The new ant setup (see last month) continues to perform very well...particularly the UHF--73's Tom.

Ed Phelps Rt 2 Box 266 Benton KY 42025 (NNZE) 502-527-2289 call anytime

11/6 2130 KTVQ-2-MT 2200 KTWQ 2 WY 2350 KWGN 2 CO MUF 3, ALL E-SKIP (AU-INDUCED-BN)

On 10 meters, had short skip to Kansas. Also WPSD-5-KY is now on the air 24 hours a day

Doug Smith 14 Brookside Court Nashville TN 37209-4503 CDT 615-356-8305

Sears Stereo 19" tabletop: rabbit ears: radio Shack corner reflector @ 6 ft.

10/15 TR 0900+

10/12 AU 0300 KJMM 2 NM	10/12 Tr 0900+ WJLY 32(IN) 158	10/12 T 0900 WAFF 48 AL 97	UNID 27
Note # 1	WGRB 34 KY 108	UNID 52 KY ?	Note # 4
Tr 0900 WKPC 15 (IN) 157	WTVQ 36 KY tent	Note # 3	WEMG 42 AL 177
WHNT 19 AL 95	Note # 2	WDKY 56 KY 160	WRGT 45 OH 276
WEHT 25 (KY) 121	WDRB 41(IN) 157	WFIE 14 KY 121	WDKY 56 KY 160
WKYT 27 KY 182	WEVV 44(KY) 121	WMMU 21 KY 97	WTJP 60 AL 157
WKPD 29 KY 116	W46?? TN 82	10/15 T 0900 WITQ 21 AL 177	UNID 61 relig.
WVAY 31 AL 95	Cookeville TBN	WHIQ 25 AL 95	Note # 5

Notes # 1...Does DX seen in my dreams count? (I dreamed I saw Klamath Falls Ch 3, but I couldn't video tape a dream so I didn't count it--Hi!--BN) Had a real vivid dream of seeing KJMM-2, yeah I know they're really on channel 10, via aurora about 0300...Suspect that's what caused me to wake up 0845, to find that I'd just missed a Cincinnati opening....# 2 Heavy CCI to local W36AK TBN.....# 3 Sync bars only. Probably WKON. Saw suspected WDET-48 about 15 mins earlier.....# 4 Two weak stations fighting it out. One probably W27AK Murfreesboro- the other likely WKYT Lexington.# 5 Very weak, with Pat Robertson. Suspect WTSF-(WV).

October 23 TROPO - ----- DX from Newburgh NY w/ Sonywatchman & built in antenna-----

WJAR 10 (MA) 145 WPRI 12 (MA) 145 WNCV 64 (MA) 145 WYSH 66 MA 145 WJME 6 (RI) 145 WFXT 25 (MA) 155
WHLL 27 MA 155 WHDH 7 MA 155 -over semi local WABC. Noticed Providence FM full quieting on barefoot ICF-
2010, then when I saw WMDT-47 ID float through WJLU-47 on the cable system. I decided to break out the TV..
(Ed notes, Newburgh NY is 40 air miles North of Clifton NJ--BN)

Eastern TV-DX "December" 1991

Doug Smith continued from the following page....

Nice to see Birmingham again, looks like the tropo season is back. Had Huntsville snow-free the evening of the 14th nothing further--Tom Bryant had Baton Rouge!

Matt Sittel PO Box 21451 511-J Wood Hall NCSU Raleigh NC 27607 (Ed Notes, Matt is CCI editor now!--BN)

4 Bay UHF Antenna, Winegard CP-4800 UHF, Amplifier, Rabbit ears for VHF. ALL TROPO LOGGINGS

8/29 0911 WEBA 14 SC 233	10/1 0755 W41AC VA 211	10/18 1111+WMTV 53 VA 213	10/24 0805 WDCA 20 DC 241
to WJWJ 16 SC 236	0930 W44AD VA 211	WVNC 56 VA 233	to WHSW 24 MD 268
1130 WCES 20 GA 266	WGOAL VA 211	WTKK 66 VA 225	0935 WTXF 29 PA 352
WTAT 24 SC 200	Onancock xltres	2330 WTAT 24 SC 200	WMM 32 DC 241
WDCO 29 GA 344	10/3 2350 WTAT 24 SC 200	10/19 0826 WBSG 21 GA 368	WBFF 45 MD 274
WFXL 31 GA 424	10/4 0820 WTAT 24 SC 200	to WTAT 24 SC 200	WFTY 50 DC 241
WFTY 50 DC 242	10/9 0900 WTAT 24 SC 200	0947 W41AC VA 211	WVNT 53 VA 213
WFXG 54 GA 247	10/11 0922 WTAT 24 SC 200	W44AD VA 211	WNLV 54 MD 268
8/30 0637 WCES 20 GA 266	10/17 2357 WBOC 16 MD 255	WFTY 50 DC 242	WVNC 56 VA 233
to WTAT 24 SC 200	10/18 0412 WEBA 14 SC 233	WGOAL VA 211	WBSG 57 PA 352
0946 WAGT 26(SC)239	to WBSG 21 GA 368	WHSP 65 NJ 347	WHSP 65 NJ 347
WFXG 54 GA 247	1111 WTAT 24 SC 200	10/23 2302 WTAT 24 SC 200	WTKK 66 VA 225
10/1 0755 WBOC 16 MD 255	WBFF 45 MD 274	10/24 0805 WBOC 16 MD 255	

All tropo have been good here, just not plentiful enough! Although WFXL-31 is my furthest logging in this report, the best day was October 24, featuring shorter distances and incredible signals! I'd never seen WBSG-57 until that day, and it came in stronger than the best signals ever seen from much closer places, like Columbia, SC or Washington DC. That's how good it was! I hope everyone has had just as much good DX! Happy Holidays to all! 73's Matt (Matt wrote me a postcard saying there was a E-skip opening on 11/5/91 with a MUF past 108 MHz!--BN)

Bob Seybold 10567 Bennet Road Dunkirk NY 14048

Sept 29- evening (hills) WETA 26, WDCA 20, Wash 50, WLYH 15, WLVT 39, WITF 33, Scranton, Elmira fair: WOLB 20, South Bend 16 & 46, Ft Wayne U's, WBGU 27, WGGN 52, WJTC, Indianapolis 40, Bloomington 42, Richmond 43, York 43, Newark 51 Angola 63,

Sept 30--AM--good opening to east-southeast, Michigan good, Ft Wayne OK, South Bend 16 & 46, pittsburgh good, WTAP 15, scranton U's super even 28 Wilkes Barre very strong, Rochester 15-38 good, Syracuse strong, WJTR 20, WETA 26, Altoona 23, York 43, WLYH 15 good, WLVT 39, WITF 33, Burlington (VT--BN) 33, Conn 26, translators to east good 59,60 63,64,65, 69 (2), trenton 52 weak, Watertown 16 strong, Elmira, Binghamton good but Scranton better, Canadians 20 -51 to north above normal.

Oct 14 great tropo opening--0730-1100 WMCU 14, Ohio 14,16,17,18,20,22,26,28,30,34,35,36,41, 42, 22 (Cambridge & Lima) WRTG 45, Newark 51, Sandusky 52, Mansfield 50, Ashland 50, Cincinnati 48, translators 65 & 69, WJLY 32 WMR 38, Lexington 27 & 36, Louisville 27 & 36, Louisville 15, Darville 56, all pittsburgh U's good, Altoona 23 & 47, Greenville Tenn 39, WTAP 15, Scranton U's great, WLYH 15, Hershey 33, Lebanon 39 (Do you mean Allentown 39?--BN) Washington 20,26 & 50, Elmira, Binghamton U's great, xltres 62,60,65,69 (NY), 63 & 64 (Penna) ???-51 (repeat of Altoona 47 & Pittsburgh (40)--Butler PA) : Conn 26,20,30, Watertown, Syracuse, Utica, U's very strong. Burlington 33 VT, Pittsburg 57, Evening before had Chicago U's in, also many Indiana U's, Michigan U's good also Southern Ohio.

Oct 28- evening -noted about 1930 (could have started sooner), strong opening to the West- Chicago u's excellent, Milwaukee 18,36,58 and tentative 30: Green Bay 26,32,38, Michigan U's super, Cadillac 33, muskogean 54 (over Erie) Grand Rapids 17 & 35 both over locals: Kalamazoo 52 & 64 (rare), WMCU 14, Ft Wayne U's, South bend strong, Angola -63, Bloomington 63, Richmond 43 (tentative), Bloomington IL 43, WJHQ 41: later shifted to North-Canadians U's & V's -great, Little current 16, Owen sound 12, Sudbury 5, Global 4 & 7 & others--Aurora up also.

Oct 29 tropo to East,Northeast, North, Northwest up mostly Northern Michigan, Ontario, Central & Eastern NY, Little Current 16, Ottawa 33, Bad Axe 35, Sudbury some of the best.

Dude from Joisey PO Box 2999 Clifton NJ 07015-2999

Tropo from Oct 22-27th, best night was Oct 23, Seen Providence 10,12,36, Boston 25,38,56, MA 66, New Hampshire 50 (after local WJWJ 50 signed off) Pretty sure I logged Mineola 57 xltr of WJLG -55, 57 was tough with Springfield & Philly fighting it out. Opening went down to Norfolk/Virginia Beach areas WGRN-27, 33 Fox was in, Red Lion WGBB-49 was very strong, Reading 51 off the back was clogging up the channel for Maine WFXT 51 Portland, couldn't see them but Joe Fela finally did. There was a full week of tropo, the New England U's at a saturation point bleeding over on other channels. FM was interesting too. This opening had real potential to go down really far out along the coast but nothing beyond 310 miles was really noted, as is mostly the case.

November 8th noted Aurora all the way up to ch 10!!! But, I heard that this spawned E-skip (AU-induced) on the channels 2 and 3, but I missed it.

Happy Holidays, Merry Christmas and Happy NIE YEER! (Hi!) Don't forget about E-Skip and Meteor Scatter in December! Gooding!

Dave Nieman 12284 Nice Road Akron NY 14001-9529

September 1991

12 Tr 0007 WNDU 16 IN 404	30 Tr 0832 CKWS? 26 ON ???	30 Tr 0930 CBCE 16 ON 266
0030 WSBT 22 IN 404	0900 CBOT? 59 ON ???	0934 CBOT2 19 ON 178
0755 WKAR 23 MI 299	0900 CIVQ 15 PQ 444	0945 CBOT 9 (PQ) 219
0759 WBSX 31 MI 282	sign on	1000 CFJP 35 PQ 300
	0900 CIVC 45 PQ 377	1000 CIVO 30 PQ 219
	sign on	1015 CBLFT1768 ON 193
	0900 CIVM 17 PQ 300	1030 CHOT 40 PQ 219
		1045 CICO? 39 ON 258

October 1991

29 Tr 0731 WGPT 36 MD 250	0900 CIVM 17 PQ 300	1045 CICO? 39 ON 258
---------------------------	---------------------	----------------------

Just a little tropo at the end of October. Dave

WESTERN TV-DX

Fred McCormack
Box 17860
St. Paul MN 55117-7860

Deadline: 10-01-91
Cut-off: 01-09-92

December 1991

Things have been slow. Two good tropo dates in October were the 12th when Jeff Kruszka noted tropo from Louisiana to the Mexican border and the 28th when William Draeb observed it from Wisconsin to New York.

New _____ New Mode _ _ Tent. - t Unidentified - unid S/On - + S/off - =
ID Color Bars - @ Unid Color Bars - % Misc. Test Patterns - &
Parallel Programming - // MTS Stereo - \$

CH Chihuahua TA Tamulipas

Mike Cherry, Box 631, Ganges BC V0S-1E0 (604-537-5201)

PDT

Equipment: See October Western TV-DX

August 1991

29 tr 1132 KPTV 12 OR 234
(KVOS-12 off)

29 tr 0600 KATU 2 OR 234
30 ms 0643 unid 2 135° 12s

20 Es 1200 \$KTVK 3 AZ 1233
1230 KCBS 2 CA 1047
1300 XHBC 3 BN 1197
1330 KEVT 3 CA 1006
1338 MUF below ch 2

September 1991

10 Es 1900 KVBC 3 NV 986
1923 KTVU 2 CA 769
1931 \$KCRA 3 CA 739
18 ms 0032 KOTI 2 OR 476
(16 seconds)
(CBUT-2 off)

October 1991
3 ms 0714 unid 3 85° 27s
7 tr 0728 KXLY 4 WA 299
0756 KREM 2 WA 299
(Over CBUT-2 !!)
20 Es 1114 opening noted
1122 KVBC 3 NV 986
1131 KRNK 4 NV 668

E skip season ended for the most part by mid-August - disappointing. October 20 E skip was a nice surprise! Propagation beacons on the 6 meter (50 MHz) band started

in from Arizona at 1114 and by 1118 the MUF was up to channel 3 and then channel 4!!! After leaving the TV frequencies at 1338, the opening lasted on 6 meters for another half hour to California.

I still don't have a new UHF preamplifier to replace the one that got fried this summer. My attempts at building one have failed - too broadband, and my experiments with narrowing the badpass haven't worked out - too much intermod, etc. I doubt that I'll have one up before winter monsoons hit British Columbia so it may be next year after I move to a new QTH. I missed out on some interesting tropo on UHF this fall - oh well.

I'd like to wish all members of the club a great Christmas and hope its filled with DX! Maybe the winter E skip season will be better than last summers! 73s Mike, VE7SKA

Frank Merrill, P.O. Box 669, Macomb IL 61455 (309-833-2661)

CDT

Equipment

ICOM R-7000 VHF-UHF communications receiver with video adapter and Zenith L1310C9 13 inch; All tropo, some E skip: VHF-UHF (Winegard 8100?), Winegard preamplifier, RG-11, at 40 feet; Most E skip: Channel Master Quantum 1110 mounted vertically at 12 feet.

August 1991

5 tr 0440 Ft Wayne, Toledo UHFs
7 Es 1633 XEPmt 2 CH XEW
KDBct 4 TX
1700 KTWO 2 WY 825
KUTV 2 UT 1125
2059 KENW 3 NM 860
2159 KNAZ 2 AZ 1200
13 Es 1700 KMID 2 TX 865
KACB 3 TX 820
15 tr 0400 WOIO 19 OH 470
WQHS 61 OH 470
0407 K34BR 34 MO 115
(St. Charles TBN)
0425 CIII22 22 ON 435
WXON 20 MI 405

15 tr 0427 W48APT 48 OH
(Spanish)
Akron UHFs
WNEO 45 OH 510
0437 CICO32 32 ON 415
0448 W45AG 45 IN 290
(Fort Wayne VJN)
W66BD 66 IN 285
(Fort Wayne WINM-63)
(No W66BN)
0544 WQLN 54 PA 560
16 tr 0115 W33AX 33 WI 195
(Madison TBN)
0200 KXLI 41 MN 375
K53CH 53 MN 340
(St. Paul religion)

16 tr 0200 K20AD 20 MN 340
(Worthington KSTP-5)
0220 W57BJ 57 WI 300
(Green Bay TAB)
22 tr 0150 WKJG 33 IN 290
("24 Hr Nxs Ch")
22 tr 0150 W45AG 45 IN 290
MN 29,41,42,43,
and 47
MN x1tr 14,20,32
0410 &GIN 11 NE 430
0450 K57BX 57 SD 440
(Lake Andes KELO-11)
0525 KUSD 2 SD 365
0535 K33AC 33 NE 300
(Pawnee City KUON-12)

Eric Voytko 1721 Dalewood Place, McLean, VA 22101 Phone 703-356-9663

Equipment: UHF-Channel Master 4250 dish, Winegard AP-4800 preamp & UT-2700 traps, RG-11 VHF-Channel Master Quantum 1110, RG-11 RECEIIVE-Icom R-7000, JVC HR-D970U VCR, Zenith SG2795BG TV

August 1991

2 Tr 2318 WVE-51 PA 117
3 Tr 0015 WLVT-39 PA 145
0030 WFMZ-69 PA 145
11 Es 1453 KTVO-3 MO 845
1459 KPRC-2 TX 1218
12 Tr 2311 WSL-10 VA 195
28 Es 2008 MUF-3

2347 WVIA-44 PA 182
15 Tr 0535 WYOU-22 PA 182
(w/ WMPT off)

October 1991

9 Tr 0732 WPTF-28 NC 227
0733 WKFT-40 NC 260
0737 WYED-17 NC 243
2233 WNEP-16 PA 182
2233 WBRE-28 PA 182
2257 W28AZ(+) VA 65

2307 W407(-) PTA SSE
(w/ACTS Christ.)
10 0602 Scranton 16-28-44
all local quality
0605 WOLF-38 PA 195
0605 WWLF-56 PA 170
0609 W40AF(+) PA 95
(Ch. Amer, Dillsburg)
0609 WGCB-49 PA 80
2230 WHRO-15 VA 155
2231 WTVZ-33 VA 155
2240 WAVY-10 VA 155

September 1991

14 Tr 2345 WERE-28 PA 182
2347 WNEP-16 PA 182

A failure of my old Winegard PA-4975 in mid September left my UHF side down for over two weeks. The preamp developed a serious overload problem, so I removed it and found the coax terminals shorted to ground. Apparently this model is discontinued, so I am trying the replacement, the AP-4800 'Chromstar'. The 4800 is rated at a whopping 30db gain, and improvements in daily scatter are evident. WLIH-15 is in more regularly and WPMT-43, which was always strong at 85 miles, is now usually in all day. Unfortunately this unit has a greater tendency to overload near the locals. WTXF-29 has not been seen since I installed it, nor has any Philly UHF as they are almost directly behind the locals and the TV just goes crazy. Salisbury U's are still there, but 16 now has an annoying 'cross' and diminished audio. I love the gain of this unit, but will miss my PA-4975, which was the perfect 'suburban' preamp.

The TV adapter for the Icom was also a major disappointment. My R-7000 will thus be relegated to being an audio receiver. But what an audio receiver it is! The VHF reception is particularly good, far better at rejecting adjacent channels than any TV or VCR I've tried. Pin-pointing carrier offsets saves time identifying stations, especially LPTV's.

I'm also trying out a new JVC HR-D970U VCR. On this unit the 'video mute' can be defeated to receive distant stations. Hats off to JVC! Their other VCR's may also have this feature too. The unit is as good as my Zenith on UHF, but not nearly as sensitive on VHF. The remote control is also too big and cumbersome. One neat feature is simulcast recording. I can feed the Icom in as a second audio source and record it's audio and the VCR's while making DX tapes.

Tropo has been a little scarce this way, but October 9 & 10 showed signs of life. The Scranton PA U's are showing up more than last fall too. The morning of the 10th they were so clear I thought I was watching the cable box!

Ed Phelps Rt 2 Box 266 Benton KY 42025 Part 2 (All phoned in to ETVDX) Totals now at 439 stations

11/12 TR 2245 WWS 10 WI 431 11/12 TR 2358 WMT 39 WI 431 11/13 TR 0012 WEEK 25 IL 268

band was open until 0100, Peoria, Chicago, North & Central IL & Milwaukee. After 0100 Atlanta, Selma & Birmingham AL was really good. Possible call change, WCAJ 68 Birmingham now possibly WABN, Aurora seen in KY on Nov 8 at 2200 it squashed the 160 meter band. Aurora looked fluorescent and reddish to the North West. On the horizon it was blue greenish.

Frank Merrill (continued)

24 tr 0403 W25BN 25 IN 260 (Marion religion)	24 tr 0605 K40BR 40 MN 395 (Willmar KITT-29)
22 tr 0535 K24AC 24 NE 265 (Falls City KUON-12)	0608 K66DN 66 MN 395 (Willmar CBC North)
23 tr 0055 WLUK 11 WI 305 KELO 11 SD 370	KTCI 17 MN 340 KVRR 15 ND 510
0215 W68BS 68 WI 305 (Green Bay TBN)	WLEF 36 WI 380 WHWC 28 WI 320 W49AG 49 WI 170
0402 CICO32 32 ON 415	(Bloomington WHLA-31)
0500 WPTO 14 OH 320 (Snow free)	0649 K63DY 63 MN 420 (Little Falls KMSP- 9)
Es 1929 KGBT 4 TX 1070 KPRC 2 TX 800	25 tr 0350 WQHS 61 OH 470 (See Note # 2)
24 tr 0235 unid 62 MN/WI (See Note # 1)	0508 W59CA 59 MI 340 (Jackson WAQP-49/TBN)
0248 CBLFT10 48 ON465 (w/W544F instead of CBEFT ch 54)	0530 WKBN 27 OH 525 0544 &K54AT 54 MN 455 (Brainerd KVR-15)
0300 CIII41 41 ON 615 CITY 57 ON 615	0548 K58BS 58 MN 340 (Minneapolis TBN)
0315 WLNS 6 MI 355 ("Rare")	W27AU 27 WI 310 (Wausau WJFW-12)
0355 K38CL 38 MN 250 (Winona KITT-29)	0550 KCCO 7 MN 425 (Second time)

Note # 1 - Heading seemed to be toward Minneapolis or perhaps as far east as Eau Claire. TBN. (I would think this was K62AU, the ACTS network LPTV at Alexandria, Minnesota. This has been reported in the past with TBN. Perhaps you could check ACTS satellite feed at that time. I know of nothing on channel 62 in Wisconsin. fm)

Note # 2 - Otherwise conditions were absolutely dead this morning. Strange that this was coming in until around sunrise.

This has been a phenomenally terrible season for tropo here. In fact, no significant FM tropo at all since SPRING (June 20)! The August 24th opening had zero effect on lowband and FM. At least I'm able to get other stuff done - lack of tropo certainly doesn't leave me without things to do, hi! I was gone for two weeks (August 29th - September 14), but apparently there was no tropo during this traditional epicenter of the season. Very strange. Maybe it's all building up to a Christmas tropo opening to New Mexico, hi.

I still haven't put up the large (70'-80') tower. This year it got waylaid by needing to replace my van (which was dying with 179,000 miles) and more expenses in my storage building. It soon may not matter if I ever do it at all with all the LPTVs, various CPs, etc.; my modest antenna has done a great job! 73.

Jeff Kruszka, 2824-E Steamship Circle, Harahan LA 70123

CDT

Equipment:

Sylvania 12" black and white, quad loop cut for channel 2, Radio Shack U-75 corner yagi. Sony Watchman. Mitsubishi HS-U31 VCR.

October 1991

1 Es 1840 unids 2,3, and 5 (Spanish)	12 tr 0200 KHOU 11 TX 319 KLTJ 22 TX 303	13 tr 2041 WFSG 56 FL 256 2131 WFGX 35 FL 193 2310 W48BC 48 FL 197
12 tr 0048 XHAB 7 TA 526 0058 KBMT 12 TX 221 0120 XERV 9 TA 559 0129 KTRK 13 TX 318	0221 KSLA 12 LA 290 2302 XHFWt 9 TA (See Note) 13 tr 0014 XHABt 7 TA 0142 KBMT 12 TX 221	(Destin LPTV) 18 tr 2114 Houston chs 2,13 20 tr 1120 KARD 14 LA 189 1128 KLPA 25 LA 179

From Dallas, Texas:

17 tr 0818 K2TVt 10 TX	17 tr 0858 KTBC 7 TX 180
0819 XHAB 7 TA 465	18 tr 0757 KSAI 12 TX 250

Note - Didn't look like XERV again; they ID every now and then and show local commercials. Did see several references to XHGC, and this is listed as the only XHGC net in the database. Had "Tour of Duty" in Spanish.

Jeff Kruszka (continued) Had some excellent tropo to the Mexican border on 10/12 and 10/13. Strange though, that only XHAB and XERV were coming in (no sign of Corpus Christi etc.). They must be really strong or this was a narrow duct. I was up on the 11th floor of a hotel in Dallas 10/16-10/18 and was surprised to see XHAB there too. Note that all Mexican IDs this month were observed on the Sony Watchman.

William Draeb, Ellis St., Rt. #2, Kewaunee WI 54216 (414-388-2350)

CDT/CST

Equipment: See October 1991 Western TV-DX

<u>September 1991</u>	22 tr 2115 WKON 52 KY 437	28 tr 1746 WETM 18 NY
25 tr 2019 WCET 48 OH 400	WXIXt 19 OH	WUTV 29 NY 445
27 tr 2026 WCET 48 OH 400	W29BE 29 MI 110	WNET 23 NY
2029 WTVQ 36 KY 473	W24AI 24 MI 190	WNED 17 NY 445
29 tr 2034 Rockfrd 45,62,68	(Michigan City TBN)	WSEE 35 PA 405
	W19BA 19 MI 140	CBLN2 34 ON 268
	W15AM 15 MI 130	CBLFT15 68 ON268
	W40AK 40 MI 110	1855 WQLN 54 PA 405
	23 tr 0443 WVTV 18 WI 100	2057 W44AG 44 PA 410
	(RETMA TP)	(Erie TBN)
<u>October 1991</u>	28 tr 0645 WUTV 29 NY 445	(See Note # 1)
1 tr 2056 W69BJ 69 MI 195	WNYB 49 NY 445	WEAO 49 OH 380
(Lansing WAQP-49)	WNED 17 NY 445	2105 WETGt 66 PA
2 tr 2043 Rockfrd 45,62,68	(Muskegon TBN)	(See Note # 2)
(No sign of 33)	W15AM 15 MI 130	CBLN 40 ON 340
W29BE 29 MI 110	(Grand Rapids WHME-46)	WNYE 16 NY 600
W19BA 19 MI 140	(Grand Rapids TBN)	CBLN4 45 ON 307
W15AM 15 MI 130	W19BA 19 MI 140	WSEE 35 PA 405
17 tr 1805 W40AK 40 MI 110	(Muskegon CHA)	WNEO 45 OH 405
(Muskegon TBN)	W29BE 29 MI 110	CFMT 47 ON 410
20 tr 1006 KFVSt 12 MO	(0 kHz-WISN-12)	WQLN 54 PA 405
0727 CICO##t 27 ON	0730 WKBN 27 OH 420	CBLFT9 53 ON 340
21 tr 0450 W29BE 29 MI 110	1746 WNYB 49 NY 445	CBCE 16 ON 270
22 tr 1730 WCET 48 OH 400	WENY 36 NY 575	(See Note # 4)
WDRB 41(IN) 437		29 tr 0540 Buffalo 17, 29

Note # 1 - Very slow and raspy Morse Code ID at 2059 made identification difficult.
Note # 2 - Under WSMH-66 most of the time. Surfaced for a fraction of a second, but no ID.

Note # 3 - Extremely strong, wiping out WBSX-31 completely.

Note # 4 - Carried CBC news parallel to CBLN stations.

I've been seeing W29BE, Muskegon, more frequently. I wonder if they raised power, antenna, or both? Also, in the October VUD in the FCC column is mentioned that WGTU-29 is supposed to raise their ERP to 2000 kW. It hasn't happened yet. I watch them when they sign on and give their ERP, etc. They're still running 1000 kW.

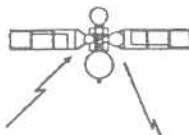
It started to rain around 1800 on October 28th which slowly killed the DX. Still a little left in the AM on October 29th. There was probably some good DX during the day on the 28th (between 0730 and 1746), but no time to watch.

WTFDA CONVENTION 1992!

AS OF THE DEADLINE, WTFDAer MICHAEL GOETSCH OF LAKEWOOD, OH HAD MADE THE SOLE BID TO HOST THE CLUB'S 1992 CONVENTION. SINCE NO OTHER BIDS WERE RECEIVED, THIS OFFER AUTOMATICALLY WINS. A BIG THANKS GOES TO MICHAEL! WE'LL HAVE MORE DETAILS ON WTFDA CONVENTION 1992 IN UPCOMING ISSUES.

SATELLITE NEWS

Greetings:



George W. Jensen
4604 Anntana Avenue
Baltimore, MD 21206-4220

There continues to be a neverending string of changes - so here goes:

Satcom C-1
changes in the Denver Netlink
KCNC to 14
KWGN to 23
KRMA to 3
No change in KUSA and KMGH
Look for Encore on 1

Galaxy 6 has replaced Westar 4
Keystone has moved from here to Spacenet 1 XPDR 13
World Harvest has moved to XPDR 14 on Westar 4
Helen Television Service from St. Lucia now on various XPDR's on Westar 4

IMPORTANT NOTE - The FCC has granted permission to Westar 4, 5 and Galaxy 6 to use these satellites for program distribution between Caribbean locations. So look for more than just Helen TV St. Lucia on these channels and satellites.

Agnet is on C1 AM's

The Asian Network will be using XPDR 28 on K-2 in addition to these Chinese programming.

Satcom 4 is failing. Canada's D2 may be used as a replacement. Canada's E1 may be forced to replace the D2 sooner if the above mentioned change takes place.,

Worldnet is now on XPDR 3 on Spacenet 2
Comedy Central is now testing with VC2. both feeds
Overnight Television Network will debut in December on Telstar 1

The NBC News Channel is being aired on GStar 3 and 4.
CNN's Airport Channel has been noted on G-Star 4 XPDR 23V

Future Launches =
Galaxy 5 122.5 W - replaces Westar 5 January
Satcom C4 - Replaces F4 in August 1992
Satcom C3 - replaces F3 in November 1992
Galaxy 7 - 91 West - New C/Ku
Galaxy 4 - 99 West replaces G-6 which moves back to old location (December 1992)
Contelsat - 83 West - New C/Ku 1993
ASC 1R - replaces ASC 1 - 1993
Telstar 401 - replaces 301 - May 1993
Galaxy 1R - Replaces Galaxy 1 - 1993
Spacenet 1R - replaces Spacenet 1 - May 1993
Spacenet 2R - replaces Spacenet 2 - Spet. 1993
Solidariday 1 and 2 - replace Morelos 1 & 2 - 1994
Intelsat VI F5 - 38 West - recently launched to replace another Intelsat upon completion of testing

FORUM:
RONALD PURDUE - Route #1, Box 224 - Byron, Minnesota 55920

Time for another report to the Satellite News column of the VUD. Guess What? I have seen the live launching of the Anik E-1 Satellite on Anik D-2, Channel 18 on September 26 or on October 3rd (I don't remember which date it was but is was' on a Thursday night). The launch and the deployment of the satellite was successful.

SATELLITE NEWS



On the Skyvision report on Westar 4, Channel 20 on the 23rd. They have reported that Westar 4 will be replaced on November 2nd by the Galaxy 6 satellite. The Galaxy 6 satellite will be at 99 West until late next year when Hughes will launch Galaxy 4 to take up the position at 99 W, according to Tracy at Skyvision. So long for Westar 4, I surely will miss it.

Yesterday the 26th, I have finally replaced the 55 deg. Kelvin LNB with the new 30K unit. I have seen a considerable - not perfect, improvement on all the channels except channels 19 - 22, I don't know why. It could be the way it was manufactured by the company Norsat.

In closing, I have been trying to find out when the new high-powered satellite Galaxy 5 will be launched (see above Ron for approximate date - ed.) Also, in the October, 1991 issue of the VUD, you have mentioned the Bikini Dating Party in the VCII encryption mode, the error is that they are in the clear. (error noted, Ed.) It is a 30 minute program length commercial. So see you in 30. '73's - Ronald Purpue.

Others take note to the above. If you have something to report or just comments to make - please feel free to sent them to me.....GWJ.

See you all in 30 - '73's

GWJ

STATION BREAK

WTFDA Stationbreak
P.O. Box 514
Buffalo, NY 14205-0514

WTFDA member ads only. Items may be edited to conserve space.

INFO WANTED - During September I logged Jazz- Programmes from KLOM Jazz Radio, USA, on "Eurojazz" transmitted via Eutelsat I-F5 on 11.077 GHz..."Eurojazz" is not on the air anymore...both stations didn't make any announcements so their address really is unknown. Has any WTFDA- member got an address of Eurojazz or KLOM?
Dietmar Gehrman - Bunzlauerstr.9 - D- W3120 Wittingen - GERMANY

FOR SALE - RDX Labs UA-75 UHF balun, 0.1 dB loss, \$19. UA-60 VHF/UHF balun, 0.3 dB loss, \$19. UA-900 UHF amp, built-in balun, 1.0 dB NF, 20 dB gain, \$169. New! UA-700 VHF high-band amp, built in balun, ch 7-13 BPF, 1.5 dB NF, 15 dB gain (20 dB opt.), \$149. All prices FOB KS. Highest performance components available, great for DX. For complete data and ordering info, send large SASE.
Jim Dietrich - P.O. Box 88 - Derby KS 67037

YOUR non-commercial ad can appear in the VUD free of charge! Got a piece of DX gear you'd like to sell? Looking for something? Advertise in STATION BREAK. This feature appears on a space available basis. WTFDA and the VHF-UHF DIGEST assume no responsibility for any claims made by advertisers--our trust is implicit, as fellow DXers.



CHANGES GRANTED TO EXISTING STATIONS

St	Ch	ERP	HAAT	Call	City
FL	10	nc	458	WTSP-TV	St. Petersburg
(was 468m. New fac. are on air)					
ID	3	56.2	nc	KLEW-TV	Lewiston
(was 13.8kW. New fac. are on air)					
MA	38	2370	354	WSBK-TV	Boston
(was 3090kW max/1170kW Hor.. 364m. New fac. are on air)					
MD	62	3366	138	WFPT	Frederick
(was 24.9kW/570m)					
MN	10	nc	301	WDIO-TV	Duluth
(was 322m)					
MO	62	2183	340	KSMO-TV	Kansas City
(was 1660kW. Old ant. height unknown, inconsistent data!)					
NC	25	1256	351	WUNK-TV	Greenville
(was 631kW max/562kW Hor., 359m.)					
OH	43	4680	336	WUAB	Lorain
(was 4800kW/327m)					
TN	16	4680	329	WMTU	Jackson
(TL: 35°47'22"N, 89°06'14"W; 1.3km ENE of TN hwy. 54 & 88, ~30km NW of old site)					
(was 588kW/207m)					

NEW STATIONS ON THE AIR

San Francisco, CA: KMTP-TV #32+; 8/31/91:
This replaces former KQEC, whose license was revoked by the FCC. Technical facilities are unchanged.

Holly Springs, MS: WBUY 40z; 9/15/91:
4624kW, 142m AAT/143m AG /249m ASL.

TL 34°59'20"N, 89°41'13"W
700m SSW of Byhalia Rd. @ TN border, nr. Barton.
TBN affil.

Llano, TX: KLNO 14-; 9/6/91:
5000kW, 524/413/918m.
TL 30°22'51"N, 98°24'08"W
6km S of Round Mtn., off hwy. 281.
NBC affil., satellite of KXAN-36 Austin.

Martinsburg, WV: WYVN 60+; 10/1/91:
3923kW, 307/70/513m.
TL 39°27'27"N, 78°03'53"W
3.9km W of Nollville, Berkeley Co.
Fox affil.

CALL LETTERS ASSIGNED TO NEW STATIONS

St	Ch	Call	City
CA	68	KWOK	Novato
GA	58	WPGA	Perry

NEW CALLS ASSIGNED TO EXISTING STATIONS

St	Ch	New	Old	City
AZ	13	KSWT	KYEL-TV	Yuma
OH	4	WCMH	WCMH-TV	Columbus

FORUM

First, a quickie note from me.. I seem to remember WCCL-49 New Orleans being reported dark a few months back. It's apparently back on, as while DXing AM, I heard a promo for a show on channel 49 on WSMB-1350.. which just goes to show, it pays to DX all bands..

John Combs, Tallahassee FL:

Besides the WKCF/WRES swap info that appeared last month, John also sent along a Reuters clipping regarding the integration of the old East German television into the system of unified Germany.

Broadcasting in West Germany is organized on a lander (state) level; each of the 9 states operates 2 statewide TV channels, and they cooperate to produce the national ZDF channel. East German TV, on the other hand, was centralized & controlled from East Berlin. Now, under the unification treaty, East Germany's DFF television is being phased out, to be replaced by two regional stations in the 5 former East German states. About half of DFF's 6,200 employees are likely to be left unemployed.

More important to many East Germans is the fear that DFF programs intended to assist them in joining a market economy will be replaced by programs from the west, and from foreign countries.

I have one other question- I've heard conflicting reports of whether East Germany used the PAL color system used in the West, or the SECAM used in most of the former Eastern Block countries? If SECAM, are the stations in eastern Germany going to change to PAL?

Dennis Park Smith, Santa Barbara, CA:

"Up until last summer or so, the PBS station in this area, KCET 28 Los Angeles, avoided any mention of its channel number on its IDs or even in its signon, presumably because of its preference for inclusion on cable systems between chs. 2 and 13. (By contrast, KMEX-34 prefers cable ch. 34) Since then, however, KCET 28 has been including its channel number (28) in IDs,

though it hasn't in any s/ons I've seen."

"Ch. 33 Tijuana has been IDed as XHAS. It used to be with the XEW network and seemed to have very little of its own IDs. Now, it appears to be with the Telemundo network, and it has more of its own IDs."

Dennis also passes along some interesting info about Video Jukebox K15DB Santa Barbara. Besides severe CCI from KPBS-15 San Diego, about 185 miles across ocean water, this LPTV has local legal problems:

"...K15DB is on Gibraltar Peak, an antenna farm of 36 acres and 100 transmitting antennas, including K59CD, K61AI, and K65??, plus an AM and many FM broadcasters.. Neighbors had worried whether the RF on the peak was a health threat, so Santa Barbara County prohibited new transmitters on the Peak in 1989. "K15DB was approved by the FCC after the County's no-expansion order, and came on the air Dec. 1, 1990. On Jan. 16, 1991, the owner of K15DB was asked about this by Santa Barbara's newspaper, the News-Press, and his reply was, "I don't know where you got that information. I don't know what you're talking about." The issue was published on Jan. 17 morning, and by that time K15DB had been turned off, and hasn't been back on."

Matt Sittel, Raleigh NC:

Matt comments on my unID Es reception on channel 6 back in May; his TV Guides indicate that it is not a Texas station (despite airing a TX ad) but could possibly be KVIO-6 Carlsbad, NM, a satellite of KVIA-7 El Paso. Quite possible; during this 90-second opening, classical music was clobbering local WMOT-89.5, KENW-FM being a good possibility.

He (and I) are also looking for technical info on LPTVs W68BK, W34AX, W13CI, W59BA, W64AZ, W56CC, W20AT, W57BQ, W51BH, W35AR, W19BC, and a TBN on 38 in Raleigh. Matt also saw WCNC-36's test pattern on 24; I can't find anything that matches, although my LPTV lists are somewhat outdated.

Ron, Wichita KS:

Sorry Ron; lost your envelope & forgot your last name!

Ron says K15DD signed on with Home Shopping sometime between 8AM and 7PM on Oct. 19. It's got a -10kHz offset, and IDs in Morse Code.

ABBREVIATIONS USED IN THIS COLUMN:

ERP= Effective Radiated Power, in kW
HAAT=Height Above Average Terrain, in meters
nc= No change
TL= Transmitter Location
CP= Construction permit
MP= Modification permit (modification of construction permit)
*= Non-commercial

APPLICATIONS FOR NEW TV STATIONS

St	Ch	ERP	HAAT	City
FL	46	1268	142	Panama City Beach
FL	46	2450	359	Panama City Beach
MD	2	100	267	Baltimore

APPLICATIONS DISMISSED FOR NEW TV STATIONS

Ch St City
58 GA Perry; Perry Television Inc.

CONSTRUCTION PERMITS FOR NEW STATIONS

St	Ch	ERP	HAAT	City
GA	34	316	147	Baxley (Upchurch Bcstg.)
GA	58	756	99	Perry (WPGA radio)
ID	13	3.98	131	Twin Falls (St. Bd. of Educ.-KAID-4)
TX	18	1187	160	Farwell (Ramar Comm. Inc.)

APPLICATIONS TO CHANGE EXISTING STATIONS

St	Ch	ERP	HAAT	Call	City
NY	7	316	221	WWNY-TV	Carthage (CP amended)
NY	18	666	243	WNPI-TV	Norwood
NY	16	618	279	WNPE-TV	Watertown
OH	44	555	393	WOUC-TV	Cambridge
TN	16	588	322	WMTU	Jackson (MP)
TX	14	5000	269	KLNO	Llano (MP)
WV	60	3890	312	WYVN	Martinsburg (MP)

Dave Sinclair, Vancouver BC:

Dave mentions that KCWT-27 Wenatchee, WA has gone TBN. He also passes along two newspaper clippings:

From the Feb. 6 Lake Havasu City Herald, "Target Television Marketing of Phoenix has inserted its last commercial into the Mohave County television translator system. The company went off the air Jan. 31 after reaching an agreement with the county in which the county purchased the company's equipment for \$60,000. The equipment will be retained by the county and may be used to broadcast emergency messages, such as thunderstorm or flash flood warnings. No other use of the system is contemplated. Three years ago Target signed a five-year contract with the county which leased it the right to insert 30 seconds of commercials each half hour. The insertions became controversial when viewers charged they were made over program material, and over commercials originated by Las Vegas, and Phoenix stations carried by the translator system. Late last year, Target asked the county to renew its contract for another five years, two years early, so that it could borrow money to improve its service, but the county declined to do so."

And, from the Oct. 12 Penticton (B.C.) Herald, news of a pirate TV station: "The Victory Christian Fellowship church in southern Alberta believes it has a mandate to preach the gospel- even if that means breaking the law by operating an illegal television station." Associate pastor Kenn Haase, of the Lethbridge, Alta. church, says he knows their channel 15 station is illegal, but believes their right to freedom of religious expression will preempt the license requirement in court. I don't know about Canadian law, but that wouldn't wash in the U.S. courts..

Winnipeg businessman Ken Groening, whose company Inspirateion Television Canada helped set up the Lethbridge station, says there are about 6 similar operations elsewhere in Ontario and western Canada, plus several dozen interested communities. Groening said a station could be built for as little as \$15,000, and that monthly electricity costs are only \$20/month.

Dave feels the \$20/mo. electricity cost is unreasonably low; given that the electric bill sitting on my kitchen table is \$41, I'd tend to agree! (admittedly, that includes electric heat..)

Ronald Purdue, Byron MN:

"KXLT-47 in Rochester finally returned to the air about 10 days ago. They were apparently been having xmtr problems, earlier this month, KXLT was broadcasting with very low power. I estimate at about 100 watts ERP..." Ronald mentions that KXLT and KXLI are now Home Shopping affiliates.

"As KXLT returned on the air, the TBN affiliate on channel 60 in Rochester (K60DS) is now off the air!"

Ronald says he's going to be writing TV stations that don't broadcast in stereo, trying to find out if & when they will begin. He says WCCO-4 is the only CBS affiliate he sees in stereo.

Some TV stations have older transmitters that simply are incapable of broadcasting in stereo. In others, the audio wiring and control room equipment is mono. Even if the wiring is stereo and the transmitter can handle it, the stereo generator itself (and the gear to monitor it) isn't cheap, and the current recession is hitting the television industry harder than the economy in general.

FCC RULES PRIMER

Now that we're caught up on the last few months of official rulemaking, I've got the space to start this up. If there's sufficient interest, this'll be a monthly feature. The idea is to explain some part of the FCC rules, as it pertains to DXing.

This month, I want to go over the legalities of LPTV.

In the early 1950's, it became obvious that many areas of the country wanted TV, but were too far from a major city to receive signals direct, and not populous enough to support their own station. To address this problem, the translator service was created. Translator stations simply pick up a TV signal and retransmit it on another channel. (the related "booster" service retransmits signals on the same channel. Otherwise, boosters are the same as translators.)

For some 25 years, translators were content to simply retransmit TV stations verbatim. They were permitted to originate their own brief announcements soliciting donations to support maintenance, but my understanding is that few did so.

Then, in the mid-80s, the declining cost of satellite time & receiving dishes made it practical for translators to pick up signals, not over the air, but by satellite. Only one problem: it was illegal! A petition was filed with the FCC, and permission was given for translators to rebroadcast satellite-delivered signals. Trinity Broadcasting (KTBN Santa Ana) and SICC (KMEX Los Angeles) were two pioneers in this area.

About the same time, someone petitioned the FCC to allow translators to originate their own programming. This, too, was approved, and the LPTV service was born.

LPTVs can operate on any VHF or UHF channel, of course subject to not interfering with each other or full-power stations. LPTVs are a secondary service, and if a full-power station requests assignment to a channel that would interfere with (or be interfered with) by a LPTV, the LPTV must move or go dark.

VHF LPTVs are limited to 10 watts transmitter power east of the Mississippi, 100 watts west. UHFs are limited to 1000 watts. I'm aware of no limits on ERP or HAAT; in practice, VHF LPTVs show ERPs of between 50 and 800 watts, and UHFs between 500 and 50,000 watts.

Unlike full-power stations, LPTVs cannot pick their own calls. LPTVs are assigned 5-letter calls, starting with a W or K (depending on whether they're east or west of the Mississippi), followed by two digits for their channel number, then two letters assigned in alphabetical order. For example, the first western LPTV on channel 2 would be K02AA.

Frequently, LPTVs and translators on channels 2-9 omit the 0 before their channel number, resulting in calls like K2MX and W5BD. Those of you who are hams will recognize these as amateur calls. If you see a TV station signing a call like this, insert a 0 before the number before looking it up..

Something else LPTVs frequently do is drop the channel number altogether. Actually, this is legal in promotional material, and even on the air, as long as they use the whole call for the hourly ID- and since they're permitted to ID with Morse Code, you may not see/hear the "real" call at all! This results in calls like KMX and WBD.

This latter situation is obvious if a TV station shows up using a 3-

letter call not used by a radio station in that area. Since 1957, the FCC has never assigned a 3-letter call to a TV station unless it was owned by a radio station that already had that call.

Harder to detect is the case of stations like "WBTR" Baton Rouge and "WSSM" Madison, where LPTVs assign themselves 4-letter calls. This, too, is legal, as long as the correct 5-letter call is used for the hourly IDs.

In the early 1950's, there was no such thing as a "character generator" for identifying translators. Translators could be ID'd by the station they're relaying (and many are), but stations in places like Salt Lake City, relayed by literally hundreds of translators, could spend all their time ID'ing & have none left over for programs! You could put a TV camera & an ID card, or a tape recorder and an aural ID, at the translator site, but maintenance would be a nightmare. So, the FCC permitted translators to ID by Morse Code, shifting their video carrier frequency "when the key is down". The code would be generated automatically by cutting wedges out of a disk & then rotating the disk past a switch.

This provision is still on the books, and many LPTVs (especially Trinity's) are ID'd this way. If one of your local LPTVs doesn't seem to ID, this is probably what they're doing.

That's a quick run through the LPTV rules. Comments? Suggestions for other rules to cover? Next month, I plan to cover the procedure for starting a new full-power station.

Oh, information from Canadian, Mexican, and overseas members would be eagerly appreciated.. I found Tim McVey's article last month very interesting..

73 Doug



FM NEWS

Bruce F. Elving, Ph.D., Editor
Pox 336
Esko MN 55733-0336

Contributions always wanted!

Readers' Reports

Alain Pepin came through with a very complete list of FM stations, call letters and facilities from Canada. After spending most of a whole week going through the data, they are all punched in and ready for the new FM Atlas, which I am working on concurrently with this column. The new Atlas should be ready in January or February, and you can advance order at \$12 including shipping (same price as last edition). I won't have room to list all Alain's changes, but will try to summarize the most important ones.

Gus Mancuso contends my timing is off. "Why not hold off on the new atlas until mid-spring? Obviously that's when the 'season' begins. Doesn't seem to be worth your trouble to do it now, plus a lot of info will be out of date by the time most guys use it. Why not take the time to fine tune things, work on those maps and proof-read? You have more 'margin' at top of map pages than at bottom." [I like my Atlas to come out at annual intervals and the stock of the 1990, 13th ed., is low, and to turn out a book for the first of 1991 will mean that the 1992 issue might be nearer the DX season, since it seems more like 14 months is the interval between printings rather than 12 months. I'm sending the manuscript to a different printer, so maybe the problems of too much top margins will be resolved, and the data should still be very current for the DX season—b.e.]

Wendell Ford sent an extensive trip report, mentioning such things as WTLN-FM 95.3 Apopka FL finally embracing stereo. He also reported on the fact that such new IN stations as WOTS Mitchell and WJEF *91.9 Lafayette IN are now stereo, and the county containing Knox IN migrates to Eastern time, so my maps have been corrected accordingly. The time zones march westward. My mother remembers when central Upper MI was on central time; now all of MI is eastern, except

for the Ironwood area. Eastern time for MN? Neighboring area of ON (Thunder Bay) and MI (Isle Royale) are on eastern.

Ken Onysekuk says it's WLS-FM 94.7 with talk, simulcast with AM 890; assumed to be monophonic. "In the latest ratings, Z-95 WYTZ 94.7 was 22nd at 1.3% listenership. ABC had to make a change. . . . Another Chicago FM rocker goes down. Listeners probably will go to WBBM-FM 96.3 or WWBZ 103.5."

Steve Solomon, now in Hamden CT, has ordered some 110 khz selectivity filters from Digi-Key. "I'll be popping one of those into my Yamaha TX-930 tuner and I'll be reporting the results. I'm a little concerned on audio quality/distortion levels with such a narrow bandwidth. Any suggestions on where to place the filter in the filter order?" [No idea; just experiment—b.e.]

The filters' king Bill Nienajdy is anxious to hear of my results using 110s. He says the 110s "work excellent," as shown by his recent VUD article. Unfortunately, I had a Magnum/Dynalab tuner fail as I tried to install filters; I have contacted the factory for advice. The tuner may have been defective, as it had been returned to the factory for refurbishment by its previous owner.

Eric Fader sent a clipping about WFMU *91.1 East Orange being ganged up on by nearby stations or close to its frequency. It seems that those stations perceive WFMU as too tantalizing a DX target, and they want WFMU to reduce its power by 50 percent. WFMU is trying to organize fundraisers to help it in legal expenses before the FCC, while the other stations are more well-heeled. Stay tuned and see if money alone helps to make a station a better DX target relative to another station!

Now onto freshly prepared material for this column, since FMedia! did not publish last month. And look for "See Also."

New FM Station, Translator Grants

AL Brundidge 94.7 2000 h.v.; 120 m, Troy Bcstg. Corp. [lic Bishop of N. AK
AK Nome *96.1 100 watts h.v.; 42 m, Catho-
AZ Duncan K285C *104.9 (KPSN 96.9 Phenix)
AZ Prescott K269EE 101.7 (KAMT 102.1
Prescott) [89.1 Little Rock]
AR Forrest City K218B *91.5 (KUA)
AR Pine Bluff *91.1 1000 h.v.; 61 m, g, Bible
Bcstg. Network [burg KS]
AR Rogers K204BS *88.7 (KRPS 89.9 Pits-
AR Waldron K205CC *88.9 (KSCB 90.1 Hot
Springs AR); a 300-watt DX target!
CA Baker (highway station west of Mountain
Pass) 101.5 50000 h.v.; 150 m, Baker Bcstg. Co.
CA Big Pine K288DL 105.5 (KMMT 106.3
Mammoth Lakes; applies for license renewal)
CA Indio *89.3 780 h.v.; 180 m, jc, Santa Monica
Community College [State U.
CA Kings Beach *89.9 2700 h.v.; 218 m, CA/
CA Ludlow 'on 1-40 between Barstow and Essex)
105.7 1800 h.v.; 180 m, First American Com-
munications [lica Com'ty. College
CA Oxnard *89.1 200 h.v.; 260 m, Sta. Mon-
CA Susanville 96.3 25000 h.v.; 100 m, Antelope
FM Partnership [M. Murphy
CO Buena Vista 104.1 6000 h.v.; 433 m, Riley/

CO Strasburg 102.3 6000 h.v.; 100 m, Leonora
Alexander [lic Telecom. Comm.
GA Fort Gaines *90.9 100 h.v.; 91 m, GA Pub-
GA Helen 105.1 420 h.v.; 263 m, H. Bcstrs., Inc.
GA Martinez 107.7 50000 h.v.; 145 m, Kennedy
Bcstg. [m, Dobson, Goss, et. al.
ID American Falls 104.1 3000 h.v.; 100/
IL Decatur W264AA 100.7 (WEJT 105.1 Shelby-
ville) [L Stratemyer
IL Hillsboro 99.7 50000 h.v.; 150 m, Benjamin/
IN Brownsburg (Indianapolis) 101.9 2500 h.v.;
51 m, Helen Quinn [Moody Bible Inst.
IN Kokomo *91.7 2100 h.v.; 91 m, g,
IN Westport *91.5 14500 h.v.; 93 m, g, Good
Shepherd Radio, Inc.
KS Great Bend *90.9 50000 h.v.; 238 m,
Hutchinson Community College
KS Independence K205CB *88.9 (KRPS 89.9
Pittsburg)
KS Seneca 92.1 3000 h.v.; 100 m, KNZA, Inc.;
causing translator there to delete
LA Alexandria *91.7 1000 h.v.; 74 m, g, Bible
Broadcasting Network [lic Bcstg. Net.
LA Lafayette *91.9 1500 h.v.; 165 m, g, Bi-
MO Hagerston *89.1 900 h.v.; 403 m, WETA-
FM
MI Hillman (between Atlanta and Alpena) 94.9
50000 h.v.; 150 m, Mark A. Kilmer

MI Sault Ste. Marie W271AC *102.1 (WNMU
90.1 Marquette)
MN Cloquet WKLK-FM 96.5 6000 h.v.; 100 m,
WKLK, Inc., to be, \$ m, on air next month
MN Eden Prairie 105.7 3000 h.v.; 100 m, SW
Suburban Radio [89.1 Duluth]
MN Moose Lake W294AA *106.7 (WNCB/
MN Pelican Rapids 104.1 50000 h.v.; 150 m,
Heart of the Lakes Bcstg.
MS Laurel W205AM *88.9 (WMBV 91.9 Dixons
Mills AL)
MS Meridian W205AL *88.9 (WMBV)
MS Woodville 107.7 3000 h.v.; 100 m, PDB Bcstg.
NV Ely K220DT *91.9 (KNIS 91.9 Carson City)
NJ Manahawkin 105.7 25000 h.v.; 96 m, Press
Bcstg. [m, g, Sound of Life, Inc.
NY Hudson *91.1 80 watts vertical only; 106/
NY Oswego *88.9 100 h.v.; 3 m, State U. of NY
NY Southport 99.5 1300 h.v.; 148 m, Nancy
Nicasiro
NC Charlotte 92.7 84 v, five sites, temporary
station to MHS Holdings, LP; experimental—
testing for in-band DAB?
NC Kill Devil Hills 104.1 100000 h.v.; 122 m,
K.D.H. Communications [Granville]
OH Columbus W272AT *102.3 (WDUR 91.1)
OH Portsmouth *88.3 1000 h.v.; 196 m, gc, The
Cedarville College (displacing translator)
OH Wooster WKWR *89.3 2100 h.v.; 97 m, Kent

FCC—FM

State U., displacing translator [Bcstg.
OR Lincoln City 95.1 24500 h.v.; 216 m, L.C./
PA Hawley 105.3 3000 h.v.; 100 m, Susan Larose
PA Levittown W300AA *107.9 (WRD V 89.3
Warminster)
PA Oliver 94.9 210 h.v.; 378 m, Humes Bcstg.
SC Belvedere (Aiken) WUOZ *88.3 4500 h.v.;
423 m, g, Toccoa Falls College, to displace WFGG
423 m, Fort Gordon GA? [Ital Bcstg.
SD Rapid City 98.7 100000 h.v.; 157 m, Cryst./
TN Germantown 107.5 3000 h.v.; 100 m, Omni
TN Nashville W271AB 102.1 (WQZQ-FM 102.5
Dickson TN, moving from 102.3)
TX Amarillo *91.9 2300 h.v.; 89 m, g, Bible
Bcstg. Net. [Jas. Madison U.
VA Lexington *89.9 100 h.v.; 59 m, cj/
WA Chehalis *90.5 3000 h.v.; 30 m, g, C. Valley
Ed. Foundation
WA Spokane K2SL 104.7 3000 h.v.; 94 m, g,
Black Hills Christian Communications
WV Charleston-Belle *90.9 800 h.v.; 190 m, g,
Maranatha Bcstg., Inc. [er Bcstg.
WI Seymour 104.3 2600 h.v.; 109 m, Brook/
WY Mammoth Hot Springs K286EF 107.1
(KCTR-FM 102.9 Billings MT)
AB Chateh *89.9 10 watts h, e, Dene Comm.
Society [dio Society of PC
AB Pincher Creek CK1Z 90.5 10 h, r, Teen Ra-
BC Ucleulet CJKW 107.3 1 w/h, West Coast
Communication TV
NB Clair CJEM- 104.3 16 h, French relay
NB Saint-Leonard CJEM- 95.1 16 watts h
NF Burgeo C1BB 89.3 10 h, d-a, Bcstg.
System, Ltd. [Social La Grande
PD Camp LG-4 CHLG-1 100.1 28 h, d-a, Club/
PD Murdochville CJRG- 99.5 60 watts h,v
PD Restigouche CHRQ 106.9 31 vertical, d-a,
Donna Isaac (OBCL)
PD Winneway 93.5 50 h, Mark Hunter
SK Canoe Lake CFCK 103.9 10 v, C.L.
Communications Committee
SK Cole Bay CFB8 89.9 10 v, C.B. Bcstg. Co.
NT Fort Providence CHFF 101.9 10 v, e, Native
Communications Society [C. S.
NT FortSmith CHFS 101.9 10v, e, Native/
NT Rae-Edo CBQ8 *105.1 160 h, CBC
NT Yellowknife 95.3 110 h.v., Y. Bcstg. Society
YT Whitehorse 89.7 10 v, e, Northern Native
Bcstg.

Call Letters Assigned or Changed

AL Fruithurst 102.7 WCKS
AK Saldotne 96.5 KAZO (KSLD-FM)
AZ Green Valley 92.1 KTNZ (KOSN), r
AZ Oracle 103.1 KLOB (KQLD), k, "Camel
Country"
AZ Seligman 103.3 KZKE
AR North Little Rock 101.1 KZQA
AR Pine Bluff *91.1 KYFB
AZ Crescent City 94.3 KCRE "FM" (KCRE-FM;
A11 gets new calls)
CA Fallbrook 107.1 KBAB (KMLO)
CA Freedom 100.5 KPFG (KHTX), back to k,
with a "Swine Line" for requests
CA Gonzales 104.3 KHKN-FM (KUP-FM), k,
"Kick'n", part of an LMA with AM stations
KMBY and KLAU in Monterey/Salinas
CA Hanford 107.5 KCLM (KMMA), k
CA Lake Arrowhead 103.9 KBON (KSHO), to
190 h.v.; 534 m
CA Quincy 100.3 KSKPY (KZDD)
CA Santa Rosa *91.1 KZCC
CO Buena Vista 104.1 KBVC
CO Denver 100.3 KMJI (KXLT), "Magic 100"
CO Gunnison K4YY (KJUC-FM), r
CT Leyard 106.5 WBWW (WVNL), to 6000 h.v.;
91 m [k, "OK-88"
FL Arcadia 98.3 WOKD-FM (WJKT),
FL Callaway 103.5 WDOR (WBKL)
FL Cape Coral 103.7 WXKB (WAKS)
FL Green Cove Springs 92.7 WJBT (WZAZ-FM),
"The Beat," still s
FL West Palm Beach *88.1 WAYF
GA Augusta 102.3 WGUS-FM (WOPW), m,
programmed by Benchmark Communica-
tions, WZNY 105.7. "With Benchmark, the

WISS-FM in WI Finally Embraces Stereo

station should be managed very well. We
should have stayed with country."
GA Leesburg 103.7 WEGC (WIKX)
GA Lumpkin 99.3 WYAZ
GA Wrightsville 106.3 WDBN (WIML)
HI Kanehene 104.3 KBLZ
IL Chicago 94.7 WLS-FM (WYTZ), t, mono, AM
simulcast. "In the latest ratings WYTZ 94.7
was 22nd at 1.3% listenership. ABC had to
make a change, and the bosses decided to
simulcast AM 890. It may or may not be
permanent. . . . Another Chicago FM rocker
goes down."
ID Ketchum 104.7 KYAA
IL Herrin 92.7 WVZA
IL Olney *90.3 WUSI "FM"
IL Woodlawn 106.9 WML (WUID)
IL Woodstock 105.5 WZSR (WAIT-FM)
IN Battle Ground 98.7 WVZE
IN Churubusco 96.3 WKQM
IN Fort Wayne 92.3 WFVI
IN Greenwood 106.7 WGGR (WVYJ)
IA Boone 98.3 KIAB (KWBG-FM)
IA Mason City 93.9 KIAI (KNIO), k
KS Copeland 98.1 KYBD
KS Liberal 105.1 KZDD
KS North Fort Riley 102.5 K3LS (KXDJ)
KS Topeka *90.3 KZKH
KY Radcliff 103.5 WUOX
KY Reuland 106.7 WXEZ (WSEQ)
LA Alexandria *91.7 KYFE
LA Bura *91.9 KMRL
ME Dennysville 102.9 WVZD
ME Kennebunk 99.3 WBQQ (WJIB), to be c,
"W-Bach," with "canned programs syndicated
out of KDCC in San Francisco" via tape
ME Sanford *88.5 WSEW
MD Baltimore 101.9 WLIF "FM" (WLIF-FM;
AM gets new calls)
MA West Yarmouth 94.9 WXTX (WOCB-FM),
MI Carrollton 100.5 WTCF (WFKF)
MI Port Huron 102.3 WGR
MN St. Peter *91.5 KNKA (KVRU)
MN Stewartville 105.3 KYBA
MS Cleveland 107.7 WMJW (WZRI)
MS Meridian 101.3 WJDD (WJDD-FM)
MS Utica 92.9 WOAD-FM (WJXN-FM), sg, AM is
in Jackson
MO Kansas City 99.7 KLTH (KMBR)
NV Reno 101.7 KTHX (KOH-FM), still p, \$
NH Winchester 98.7 WXOD (WKBK-FM), o
NY Blue Mountain Lake *89.9 WLXH
NY Elmira 92.7 WENY-FM (WLEZ)
NY Hudson 93.5 WRVW (WRES), still o, "93
Gold"
NY Montauk 94.9 WVZC
NY Not changing calls—yet: WPLJ 95.5, but
rumored to want to dust off oldies and bring
back WABC-FM, recalling heyday of its AM
770. WCBS-FM 101.1, anticipating possible
oldies competition, has already switched
onto "Cousin Bruce" Morrow, and Scott
Shannon hasn't helped the station's former
"MaJo" image like he had when he was at
WHTZ 100.3. NonID is "95-5 PLL."
NY Rotterdam 98.3 WTRY-FM (WSH2), taking
calls of non-co-owned AM in Troy, still o,
"Great 98"
NC Charlotte 95.1 WAQQ (WGK-LF-FM),
NC Eden 94.5 WMKG (WMDY)
NC Salisbury *102.5 WKTD (WNWY)
NC Wilmington 105.3 WUOY
OH Chillicothe *91.9 WVZF
OK Nowata 94.3 KRIG (KNFB)
OK Poteau 107.3 KBSY (KLMK), rm, "Sunny"
OK Sapulpa 100.9 KXOJ-FM (KXOJ "FM")
OK Sulphur 100.9 KFXT (KFNC)
OR Brownsville 102.3 KGAL "FM" (KGAL-FM;
AM in Lebanon gets new calls)
OR Medford *91.7 KCIA [not "Z-96")
PA Berntown 95.9 WZZZ (WBNE), rp, "Z-95")
PA Boyertown 107.5 WBYN (WYCL), g, taken
over by WDAC 94.5 Lancaster.
PA Bradock 96.9 WRRK (WMYG), "Rock 97"
PA Erie 94.7 WVZB

PA Pittsburgh 104.7 WORD-FM (WEZE-FM);
AM is in Spartanburg SC
PA Pittston 102.3 WYOD-FM (WWRB), "Q-102"
(AM is in Plattville WI)
PA Washington *92.1 WXJX (WXJM); see
Harrisburg VA below
PA York 105.7 WQXA-FM (WQXA)
SC Pawleys Island 100.3 WPWJ
SC Spartanburg 102.9 WSDN (WJZX)
SD Rapid City 104.1 K1QK (K1GN), k
TN Jefferson City 99.3 WJFC-FM (WNOX)
TN La Follette 104.9 WQLA-FM (WOLA)
TN Loudon 99.1 WNOX (WLOD-FM); ID with
Knoxville, as does 99.3, WJFC-FM
TX Amarillo *91.9 KYFA
TX Arlington 94.9 KDDZ (KHYY), o, "Oldies
94.9" (strict)
TX Comfort 95.1 KYBC
TX Howe 95.3 KZKF
TX Raymondville 105.7 KARU (KQUF)
TX Wichita Falls 92.9 KNIN-FM (KNIN "FM")
TX Woodville 94.7 KVLL-FM
UT Salt Lake City 94.1 KALL-FM (KLCY-FM),
o, "Oldies 94"
UT Vernal 105.9 KLCY-FM (KUIN); KLCY AM
is in East Missoula MT, to 7400 h.v. (126 m)
VA Harrisonburg *88.7 WXJM (not WZJM).
"The station in Washington PA (see above)
applied for different calls at the request of the
station at JMU. The FCC allocation letter is
enclosed for your interest."
VA Lawrenceville 98.9 WHFD (not WLES-FM);
on air, oldies and country (ok), monophonic
VA Manassas 106.7 WJFK-FM (WJFK), AM in
Baltimore (1300) now simulcasts the FM,
including Howard Stern.
VA White Stone 100.1 WVZG
VA Yorktown 94.1 WKOD (WKEZ)
VA Davenport 102.5 KZBB
WI Minocqua 95.9 WMGA-FM (WVWH)
WI Waukegan 105.1 WNN. "Rasberries to
whoever suggested (CFMaid Oct.) that this
suburban Madison CF should move to less
crowded 92.9 or worse 93.1—home of
Chicago's magnificent WXRT, which comes
in clear and clean on higher elevations south
of Madison, including my own."
PR Hormigueros 92.1 WEGM (WBOZ-FM/WGJT)
106.1 WGIT
AB Banff *104.3 CKUA-FM14, \$ [d-a, \$
BC Abbotsford 104.9 CF8R (CF8R), 16000h, h
BC Armstrong-Endery 98.7 C1CF-4 (CKAL-4),
h, v [CKSR-1, h only
BC Chilliwack 107.5 CKSR [h, d-a
BC Christina Lake *88.5 CBRO (CBRI), 100/
93.3 CKGF-1 (CKGF-3)
BC Clearwater 102.9 CFJC-1 (CFJC-2)
BC Creston 89.9 CKIB, 10 v (no h)
BC Gold River 100.1 CJGR (CFWB-1)
BC Greenville (move from New Aiyush) 96.1
CILZ, 8 v [CKH (CKNL-1), 10 v
BC Hudson's Hope 106.1 [m, non d-a)
BC Kaslo 95.3 C1CF-3 (CKAL-3), 42 h, v (-93/
BC Mackenzie 105.7 C10-2
BC Magna Bay 94.7 C1CL (C1CL-), v, not h
BC McLeod Lake 92.5 C10-1
BC Merritt 99.5 CFJCF-FM
BC Nakusp 100.1 C1CF-1 (CKAL-1)
BC New Denver 93.5 C1CF-2 (CKAL-2)
BC Osta Lake-Tatlaose *94.9 CFJG
BC Pemberton 104.5 C1SP (C1SP, 20 v (215 m),
d-a
BC Phoenix *97.9 CBRJ, 300 h, d-a
BC Port Alice 100.3 CFPA (CFNI-1)
BC Poucelet 102.7 CWBC (CKKS-1)
BC Princeton *91.1 CBRG (CBRI), 16 h, d-a
BC RadHot Spring *94.5 CBUD (CBKV), h,
only, d-a
BC Sorrento 107.1 CHNL-2 (CHNL-3), h/
BC Tumbler Ridge 92.7 CJOC-1
BC Ucelelet 102.7 CWBC (CKKS-1)
BC Valemount *90.3 CBRV (CBKI)
BC Cranberry Portage *88.9 CBWU, h, v
over by WDAC 94.5 Lancaster.
NB Allardville 97.9 CBAA (CBAF-22), English,
m, from Neguac [from Newcastle
*105.7 (from 101.9) CBAF-2 (CBAA),/

NB Campbellton *91.5 CBAF-3 (CBAF-23), 2400 h (1223 m, d-a)
 NB Edmundston *100.3 CBAF-4 (CBAF-28), 20400 h,v (204 m) [CBAF-14]
 NB Fredericton-SaintJohn *102.3 CBAF-1/ NF Clareville 100.7 VDCM-1, 1200 h,v 105.3 CJKK
 NF Deer Lake 95.1 CKXX-1 (CJOY), h,v
 NF Hopedale LB 89.9 CJHL, v
 NF Rigoulet LB 89.9 (from 89.1) CHLR, 1 v *105.1 CFRU (CFGB-), 4 h,v
 NF SaintJohn's *105.9 CBAF-17 (CBAF-20) NS Cheticamp *103.9 CBAF-13 (CBAF-17) NS Digby *104.7 CBAF-7 (CBAF-31)
 NS Halifax *92.3 CBAF-5 (CBAF-10) NS Middleton *93.3 CBH-FM, 1, is h, d-a *107.5 CBAF-6 (CBAF-21)
 NS Mulgrave *107.5 CBAF-11 (CBAF-25) NS New Glasgow *88.7 CBAF-10 (CBAF-27) NS Sydney *95.9 CBAF-14 (CBAF-24), d-a NS Weymouth *100.9 CBAF-8 (CBAF-2), h only, d-a; 103.3 CKDY-1
 NS Yarmouth *107.3 CBAF-9 (CBAF-30), 1200 h,v (145 m, d-a)
 ON Dubraultville 93.9 CFNO-6, h,v
 ON Fort Erie 101.1 CKEY (CJFT), d-a; [tr 530 AM silent, deleting] (watts h)
 ON Geraldton 107.1 CFNO-4 (CFNO-3), 5/ ON Hearst *91.1 CINN, h
 ON Hornepayne 107.1 CFNO-2 (CFNO-1) ON Longlac 107.1 CFNO-5 (CFNO-4)
 ON Mesford-Centreville 104.9 CKNX-FM2, d-a ON Midland 88.1 CFRH-1 (CFXL), v
 ON Ottawa (east) 96.5 CFDT 6 v, d-a, t (English) [west] 96.5 CFDT-1, 6 v, d-a, t (French)
 ON Thunder Bay *88.3 CBOT (CBO), h *101.7 CBQ-FM (CBO-FM; AM deleted)
 ON Wawa 107.1 CFNO-7
 PE Charlottetown *88.1 CBAF-15 (CBAF-29) PQ Cabano 102.7 CFVD-1 (CFVD-FM)
 PQ Pavane-St-Pierre 95.1 CILE (CITE-)
 PQ Kangisaluajaa 89.9 CFGR, v
 PQ Lac Megantic 101.7 CFJO-1
 PQ Lac Megantic 103.9 CKWE, 50 h
 PQ Pohénégamook 104.9 CFVD-2 (CFVD-FM2) PQ Port Menier 90.1 CJBE, 6 h, d-a
 PQ Radisson 92.3 CIGP (CITE-)
 PQ Rivière-au-Renard *92.5 CBGA-3, 40 h
 PQ Rivière-du-Loup *89.5 CBJR-FM1, h 107.9 CIBM-1, h, d-a
 PQ Rouyn-Noranda 96.5 CHOA (CHLM)
 PQ St-Felicien 92.1 CHVD-1, h,v
 PQ Saint-Pamphile *88.7 CBV-4, h
 PQ Squatec 92.1 CFV0-3
 PQ Trois-Pistoles 104.9 CIBM-2, h, d-a
 PQ Val d'Or-Lithium Mines 103.5 CHOA-1 (CHLM-1) [93.5 station deletes]
 PQ Winneway 93.5 (from 100.1) CFWR; former/ SK Cumberland House 89.9 CJCF, v
 SK La Loche 103.1 CHPN, 5 v, d-a
 SK La Ronge (not La Loche) 89.9 CJLR, v
 SK Pelican Narrows 89.9 CJAZ, v
 SK Pinehouse Lake 89.9 CFNK (CKRW-), v
 SK Regina 92.1 CHMX (CFMQ)
 SK Saskatoon 90.5 CFCR [d-a]
 NT Hay River Reserve 101.9 CHRR (CKNM-), NT Inuvik 103.1 CKEV, 8 h
 NT Nanisivik 90.1 CHOP, 45 v
 YT Carmacks 90.5 CHCK (CKRW-), 3 v, d-a
 YT Haines Junction 93.5 CHHJ (CKRW-), 10 v, d-a
 YT Old Crow 90.5 CHOL (CKRW-), 3 v, d-a
 YT Pelly Crossing 90.5 CHPE (CKRW-), 3 v, d-a
 YT Teatin 90.5 CHTE (CKRW-), 3 v, d-a
 YT Whitehorse 93.5 CHLA (CKRW-), 1 v

See Also November VUD For

AL Attalla WKXX 102.9 \$, r, "Kix 103," Pugh, p. 28
 AL Eutaw WIDO 104.3 \$, Pugh, p. 28
 AL Fort Rucker WXUS 100.5 \$, Pugh, p. 28
 AL Moulton WXKI 103.1 \$, Pugh, p. 28
 CO Leadville city of new KWBI translator on

89.17 Allen, p. 27.
 FL Cocoa WLRQ 99.3 LiteRock 99.3 FM, Brumfield, p. 21 [Brumfield, p. 21]
 IN Rensselaer WLQI 97.7 r, "Q-98," KSWichita KZZD *90.7, Z-91 (from "Z-Gam"), Combs, p. 28 [Brumfield, p. 22]
 KY Maysville WFTM-FM 95.9 still mono./ NY Hudson Falls WENU 101.7 mr, Monroe, p. 20 [is it stereo? Brumfield, p. 21]
 NM Los Lunas KZPY 106.3 probable kr format/ NY Hampton Bays WWHB 107.1 "WNEW-FM" nomID (from "HB-107"), Mancuso, p. 22
 OH Calina WCSM-FM 96.7 Mix 96.7; is it still mono? Ross, p. 26. ["Station News," p. 23]
 PA Tioga WPHD 94.7 (having moved from 93.3), TN Centerville WNKX-FM 96.7 (was WHLP-FM), k, "Kicks 96.7"; is it stereo? Smith, p. 28.
 TX Hobstown KMID 105.1 sr, no Spanish, still "Magic 105," Brumfield, p. 22
 ON Cornwall DFLG 104.5 Easy 104.5 (from "Stereo 104.5"), Monroe, p. 20
 PQ St-Hilarion CHIO assumed to be "C Show MF"; is it stereo? Pugh, p. 28.

Facilities Changes (Selected)

AL Mobile WHIL *91.3 303 m (100000 h,v), C AL De catur WDRM 102.1 298 m (100000 h,v) FL De Funiak Springs WQUH 103.1 50000 h,v; 147 m, C2
 GA Lyons WLYU 100.7 (from 92.5) KS Augusta KLLS 104.5 46000 h,v; 156 m, C2
 KS Columbus KOCD 105.3 (from 98.3) 25000 h,v; 64 m, C3
 KS Hutchinson KIUS 97.1 12500 h,v; 141 m, C3
 KY Cave City WHHT 103.7 (from 106.7), 13500 h,v; 137 m
 KY Georgetown WTKT-FM 103.3 (from 103.1) 5000 h,v (97 m), ID with Lexington
 LA Boyce KBCE 102.3 25000 h,v (88 m), C3
 MI Spring Arbor WSAE *106.9 (from 89.3) 290C h,v; 102 m
 MO La Monte KOSY 97.1 25000 h,v; 100 m, C3
 MO Springfield KTXR 101.3 (having moved from 101.5)
 NM Ruidoso KWES 93.5 25000 h,v; 57 m, C3
 NY Watertown WCIZ 97.5 87 m (100000 h,v), downgrade to C2
 NC Edenton WZBO-FM 102.5 (from 102.3) 26000 h,v; 210 m, C2
 OR Gold Beach KGBR 92.7 42000 h,v; 420 m, C1
 OR Sweet Home KSKD 107.1 8300 h,v (734 m), C1
 PA Tioga WPHD 94.7 (from 93.3), affects Corning booster
 SC Marion WKSX 100.5 21500 h,v; 108 m, C3
 SC Myrtle Beach WJYR 92.1 50000 h,v; 90 m
 TN Atwood (from Huntingdon) WTKB 93.7
 TN Memphis WKNO-FM *9.1 100000 h,v; 176 m
 WSKS *91.7 25000 h,v; 123 m, d-a; these two and experimental operation, which apparently becomes permanent
 TX Alice KBIC 102.9 (from 102.3) 50000 h,v; 150 m, C2
 TX College Station KTSR 92.1 (grant for 107.3 rescinded), 3000 h,v; 84 m
 TX Corpus Christi KBNJ *91.7 (from 91.9)
 TX Mesquite KEOM *88.5 (from 88.3)
 TX Raymondville KSIX-FM 102.1 (from 101.7) 17900 h,v; 231 m, C2
 VA Exmore WPHG 106.1 25000 h,v (100 m), B1
 WA Bellevue KASB *89.3 250 h, 1 m, "but it has been years since I've heard KASB. Does it still operate? I get only Bellingham on 89.3."
 WA Cashmere KZPH 106.7 (from 101.1)
 WV Kingwood WFSP-FM 107.7 (from 107.9), \$, "Sunny FM 107.7"
 WI Ladysmith WLDY-FM 93.1 (from 92.7), still mono
 WI Oshkosh WUSW 96.9 (from 96.7) 10 m (3000 h,v)
 AB Edmonton CKUA-FM *94.9 100000 h,v

(146 m)
 AB Swan Hills CBXZ *91.5 88 watts h,v (157 m—not 88 kw)
 NB Edmundston CFAI 101.1 (from 92.7) 1000 h,v; 95 m
 PQ Quebec CKIA 96.1 has h,v
 CHOI 98.1—apparently not moving to 96.9
 NT Hay River CJCD-1 *100.7 (from 100.1) 300 h,v, d/a (53 m)

Stereo—Or to be Stereo

AL Attalla WKXX 102.9, r, "Kix 103"
 AL Eutaw WIDO 104.3
 AL Fort Rucker WXUS 100.5
 AL Moulton WXKI 103.1 (having moved from 103.3), k, "X-103"
 AL Opelika WMXA 96.7, "Mix 96"
 CA Soledad KLUJ 106.3, p, "Clue FM" (not strict), ID with Salinas-King City
 FL Apopka WTLN-FM 95.3
 FL Plantation Key WFKZ 103.1
 FL Silver Springs WWGO 95.5, o
 GA Ashburn WFFM 105.7, o, ID with Fitzgerald
 GA Waynesboro WAGW 107.1, "Lite 107.1," ID with Augusta
 ID Hayden KKCH 94.5
 IL Ramsey WJLY 93.3
 IN Cannelton WKCM-FM 102.9, k, ID with Tell City-Hawesville (KY)
 IN Lafayette WJEF *91.9
 IN Mitchell WTSJ 102.5, g
 IN Terre Haute WPFH 102.7, a stereo carrier, but no programming. "Calls given every five minutes over telephone!"
 KY Louisa WSAE 92.3, r
 LA Reserve WADU-FM 94.9, "Laplace's All Rock Station." Has "homebrew tapes with no IDs, spots, promos." Seeking a 25 kw C3, expected by spring.
 MD Mountain Lake Park WKHJ 98.9, "99-KHJ"
 MI Carrollton WKFK 100.5, "K-100.5"
 MO Perryville KBQZ 93.1, "B-93.1"
 NE Bonnington KRRK 93.3, p, "K-Rock," which they call "intensive rock." Even though serving Omaha, there's no dual-city ID.
 OH Coal Grove WVXX 97.1, b
 OH Fort Shawnee WBUK 107.5, "The Big Buck"
 OH Marietta WEYQ 102.1
 OH Troy WTRJ 96.9, o
 PA Grantham WVMM *90.7, "V-90.7 FM"
 PA Spangler WCCZ 97.3, "Goldies 97.3"
 TX Bryan KBMA 99.5, Spanish, I
 TX Clarksville KCBZ 98.5
 TX Georgetown KNNG 107.7, "107.7 K-Nac" (strict), ID with Austin
 TX Liberty KSHN 99.9, ID with Dayton
 TX Lufkin KSWP *91.1
 TX Stephenville KCLUE 96.3
 VA Covington WLDQ 100.9
 VA Bellingham KZAZ *91.7, cj, and "just had its first blind drive," with the usual NPR shows; 2 a.m. sign off
 VA Kelo KUKN 94.5, k, "Cookin' Country," with Longview ID
 WV Berkeley Springs WCST-FM 93.5
 WV Danville WZAC-FM 92.5
 WV Dunbar WBES-FM 94.5
 WV Princeton WAHY-FM 95.9
 WI Berlin WISS-FM 102.3
 WI Brule WHSA *89.9 now fulltime stereo with c, weekend jazz, plus NPR, dropping weekday call-in programming which was duplicated on KUWS *91.3 Superior WI)
 WI Mosinee WOFM 94.7, o, ID with Wausau, "Wausau's Oldies FM, WOFM."
 WI Sheboygan WSHS *91.7
 WI Sturgeon Bay WFFF *90.5

MONOPHONIC
 FL Tampa WBFM *90.5, remove \$ listing
 KY Maysville VFTM-FM 95.9
 TX Pasadena KJIC *88.1 still mono

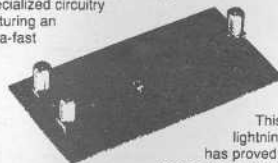
ANTENNA PREAMPLIFIERS WITH THE CONVENIENCE YOU WANT

Winegard's Prostar antennas can be paired with any of the Chromstar® 2000 preamplifiers which feature high-tech designs with the most up-to-date technology for reduced noise, greater convenience and easier installation.

The preamplifiers feature 75 ohm cable input, which can be easily adapted to the 300 ohm Prostar line with the AP-1000 transformer kit. The AP-1000 kit adapts any 300 ohm TV antenna to 75 ohm Chromstar series preamp. Includes matching transformer, 4' coax cable and rubber boots.

The housing is constructed of tough, high-impact ABS material which resists damage due to constant UV exposure, and is most mounted for easier installation. Flexible, polyethylene boot covers keep connections clean, dry and protected from the weather. And the steel hardware is zinc plated for maximum corrosion resistance.

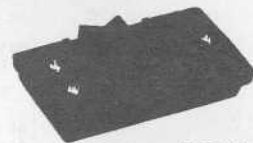
Transistor burn-out is virtually eliminated with specialized circuitry featuring an ultra-fast



recovery diode. This protection from lightning-caused pulses has proved effective in hundreds of thousands of installations.

The preamp features two FM traps. The selectable FM trap reduces FM signals (88-108 MHz) -15dB to prevent overload from strong local stations. There is also a tunable FM trap that reduces a 3 MHz band width by -12dB. Both are adjustable — selectable without opening the housing.

In addition, our improved manufacturing capabilities include new highly-sophisticated technology for more consistent, efficient, automated production. Surface mounted components are 1/10 the size of leaded components



for a more compact amplifier, and they minimize stray RF because there are no exposed component leads. You can expect greater accuracy with much cleaner signal transmission because there is less interference. The components are fastened more securely to the printed circuit board, with little chance of breaking loose during shipping or severe weather.

This preamplifier line has only 10 models — so you have less inventory to carry and warehouse. The convenient calculator-type, plug-in power supply is both CSA and UL approved.

	AP-2870 Dual Input	AP-2850 Dual Input	AP-3700	AP-3800	AP-4700	AP-4800	AP-8275	AP-8700	AP-8780	AP-8800	
GAIN (Avg.)	VHF	20.6 dB	32.5 dB	19.2 dB	32.9 dB	By-pass	By-Pass	32.1 dB	20.5 dB	20.8 dB	32.7 dB
	UHF	18.7 dB	18.2 dB	By-Pass	By-Pass	19.4 dB	30.7 dB	29.9 dB	19.3 dB	30.9 dB	19 dB
NOISE FIG. (Avg.)	VHF	2.9 dB	2.9 dB	2.6 dB	3.2 dB	N/A	N/A	2.9 dB	2.8 dB	2.9 dB	2.7 dB
	UHF	2.9 dB	2.9 dB	N/A	N/A	2.9 dB	2.7 dB	2.8 dB	2.8 dB	2.7 dB	2.8dB
MAX. TOTAL (Microvolts)	VHF	85,000 µV	23,000 µV	98,000 µV	23,000 µV	N/A	N/A	23,000 µV	85,000 µV	85,000 µV	23,000 µV
	UHF	93,000 µV	98,000 µV	N/A	N/A	96,000 µV	23,000 µV	26,000 µV	87,000 µV	23,000 µV	90,000 µV



Complete Winegard line is available from:

Rich Wertman
 R.W. Antenna Service
 6510 Crosby Road
 Lockport NY 14094

(716) 433-0805