

Vhf-Uhf DIGEST

The Official Publication of the Worldwide TV-FM DX Association

OCTOBER 1992

From
Small
Acorns...

WLW-T
Television
Cincinnati

WLW-D
Television
Dayton

WLW-C
Television
Columbus

WLW
Radio

WLW-I
Television
Indianapolis

... THE
DYNAMIC
WLW'S



WORLDWIDE TV-FM DX ASSOCIATION

POST OFFICE BOX 514-BUFFALO, NY 14205-0514-U.S.A.

OPINIONS EXPRESSED IN THIS PUBLICATION ARE THOSE OF THE INDIVIDUAL CONTRIBUTOR, AND DO NOT NECESSARILY REFLECT THE VIEWS OF THE PUBLISHER OR BOARD OF DIRECTORS. WE RESERVE THE RIGHT TO EDIT MATERIAL TO MEET PUBLISHING STANDARDS, UNLESS PREVIOUSLY AGREED UPON IN WRITING. ALL MATERIAL SUBMITTED FOR PUBLICATION IN THE VHF-UHF DIGEST BECOMES THE PROPERTY OF W.T.F.D.A.

REPRODUCTION OF MATERIAL FROM THE VHF-UHF DIGEST WITHOUT PERMISSION OF W.T.F.D.A. IS PROHIBITED. INDIVIDUALS AND OTHER ORGANIZATIONS ARE GRANTED SUCH PERMISSION PROVIDED PROPER CREDIT IS GIVEN TO THE SOURCE.



first class mail

11/92
WILLIAM N NOLLMAN
35 NYE ROAD
GLASTONBURY CT 06033

Amateur TV Operator's Workbook!

NEW AMATEUR TV BOOK IS HOT SELLER!
MANUAL MAY BE OF INTEREST ALSO TO HOBBY TV-DX'ERS

Mike Stone's (WB0QCD) new hefty size FAST SCAN TV manual entitled "AMATEUR TELEVISION OPERATOR'S WORKBOOK" which was released this year at the DAYTON, OHIO HAM-VENTION has all but SOLD OUT first edition copies (one box of 30 remain as of this printing). Nearly 1,000 first edition copies of the UNITED STATES ATV SOCIETY sponsored publication have been sold since April 1992. The thick book took nearly two-years to assemble. A.E.A. Coporation in Lynnwood, WA (one of the two sponsors of the book) purchased 500 initial copies to place into their 85 retail dealer stores nationwide. Direct over-the-counter and mail order sales have also been very good with several selected dealers having already placed several reorders. WYMAN RESEARCH, INC. of Waldron, IN, UNIVERSAL RADIO in Reynoldsburg, OH and SPECTRUM INTERNATIONAL, INC. of Concord, MA report steady sales of the new book through July. Assembler/Author and Publisher Mike Stone has published articles in past issues of Vhf/Uhf DIGEST about the subject.

A revised 2nd Edition production run of the book is planned for sometime in August/September with copies available this fall. This planned "updated" manual will have BROWN plastic and cardboard spiral covers instead of the blue bound versions made available on current first edition copies. It will still sell for \$14.95 per copy. New additions to the 170-page manual will include an over 250 operator listing of CATV employed HAM operators, information on Leo Zucker's (K2LZ) patented, dual-polarity, 1050 line HDTV FCC proposal, updates to Chapter Seven's EQUIPMENT SOURCE DIRECTORY and Chapter Twelve's ATV CLUB and ATV/R and RT pages, more great photos, e-x-p-a-n-d-e-d commercial advertising and other additional information. Commercial Advertisers desiring to get ADS into this edition should contact Mike Stone at QCD PUBLICATIONS immediately (319) 452-3628.



AMATEUR TV WORKBOOK
Just Released! 170-page, 21 Chapter manual covering everything you need to know about HAM-TV. Assembled by WB0QCD. Written by 11 authors. Updated, plastic spiral bound edition \$14.95 plus \$1.50 shipping. No credit cards.
QCD PUBLICATIONS, INC.
770 Quincy Avenue,
Clarence, IA 52216-9628

The AMATEUR TV OPERATOR'S WORKBOOK presently contains 21 Chapters written by 11 expert authors active in the field covering everything from Early Commercial and Amateur TV History, an easy to understand, well written study of the NTSC Video Signal, a listing World Broadcast Systems, Video Waveform Monitoring theory, the difference in Computer Video Images, Getting Started on ATV, Cameras, 3-Kit Building Projects, Transmitters and Receivers, Preamps, Sound & TV Audio, ATV Repeaters and Remote Transmitters, Special Events on FSTV including Contests and Awards, Antennas, Coaxial Cable, Amplifiers, Futuristic Digital TV Techniques, AM versus FM TV Signals, CATV and Hams, Reporting TV Signals (new Weighted dB P-Chart and TV Test Pattern Included) with a 16-page Chart/Reference/Glossary section of TV and Video Industry Terminology. There are at least 182 known operating Amateur TV signal REPEATERS and REMOTE TRANSMITTERS located around the country in many major cities (listing provided in the book) in which hobby TV DX'ers might be able to pick up. Many are horizontally polarized systems. Several of these HAM-TV relay systems provide NASA Space Shuttle Video and Audio broadcasts: Regular evening viewing is quite interesting (and entertaining) to watch! Some systems employ L-I-V-E relayed WEATHER RADAR images from the NWS. Special event activities on Amateur TV include high-altitude balloon launches covering several states in viewable range which travel upward to 100,000 feet before BURST while transmitting continuous breath taking pictures on HAM-TV frequencies (usually 439.250 MHz) with attached cameras and computer generators. HF SWL NETS are conducted on 40 and 80 meters LSB for TV HOBBYISTS to "tune in to" and listen to flight progress. There is also a large listing of known ATV CLUBS around the country (with address information). Many newer TV sets and VCR tuners have the capability of viewing Amateur TV signals that are sent in the 420-440 MHz. band area just below UHF-TV Channel 14 without modification. Some TVs require an inexpensive UHF to VHF (Channel 3-4) DOWNCONVERTER box. WB0QCD's manual sells for a reasonable \$14.95 per copy plus \$1.50 for postage/handling. Orders for the book may be sent directly to the publisher: QCD PUBLICATIONS, INC., 770 Quincy Avenue, Clarence, IA 52216-9368. Please mention your W.T.F.D.A. membership when ordering.

**SATELLITE NEWS**

George W. Jensen
4604 Armitage Avenue
Baltimore, MD 21206-4220

G-Star 3 93 West KuBand only
Used for occasional feeds - Non-Stationary orbit due to malfunction.
27 - test Card noted

GALAXY 3 93.5 West (95 proposed) odds-Horiz./Evens-Vert.
1 - Encore VC2
2 - Fox Cable Network
7 - A. C. T. S.
8 - Home Shopping Club
9 - QVC Shopping Network
10 - EWTN
12 - Nu Star Cable Vision Promos for cable services
13 - the Weather Channel VC2
14 - C-Span II - U. S. Senate
15 - VH1 (Video Hits 1) VC2
16 - Viewers Choice 2 - Pay-Per-View VC2
17 - MTV - East VC2
18 - MTV - West VC2
19 - Nickelodeon - Nick-At-Night - East VC2
20 - Lifetime East VC2
21 - Views Choice Pay-Per-View VC2
22 - Nickelodeon - Nick-At-Night - West VC2
23 - Comedy Central - West VC2
24 - C-Span I - U. S. House of Representatives

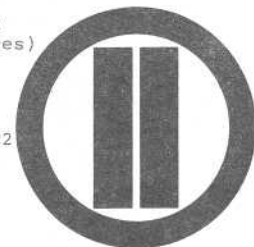
S B S 4 91 West KuBand only

Used primarily for instructional services and teleconferences

Spacenet 3 87 West Odds-Horizontal/Evens-Vertical
2 - Nebraska Public Television
3 - WSBK - Ch. 38 - Boston, Massachusetts VC2
4 - nebraska Public Television (special services)
5 - KTVT - Ch. 11 - Dallas, Texas
8 - Access America
9 - WPIX - Ch. 11 - New York, New York VC2
11 - CNN feeds
15 - KTLA - Ch. 5 - Los Angeles, California VC2
16 - VCC - Video Catalog Channel
19 - SportSouth VC2 occ. CNN
21 - PASS sports channel VC2
22 - Las Vegas Television Network
23 - Home Team Sports VC2
24 - Satellite Market USA

SATCOM K1 85 West Ku Only
ALL TRANSPONDERS ARE IN MAC FORMAT - IS A DBS (direct broadcast service) SATELLITE FOR "PRIME STAR"

TELSTAR 302 85 West Odds-Vertical/Evens-Horizontal
5 - HBO II East VC2
7 - CBS feeds VC1
9 - HBO 3 East VC2
10 - ABC Los Angeles L
11 - ABC
14 - HBO II West VC2
16 - CBS feeds
18 - CBS feeds VC1
19 - CBS feeds VC1
20 - CBS feeds VC1
21 - Cinemax 2 East VC2
22 and 24 - occasional feeds many times in MAC

**WPIX NEW YORK**

SATCOM 4 82 West Odds-Horizontal/ Evens-Vertical
(this satellite used to be ANIK D2 and replaced F4
when in malfunctioned last year)

- 1 - Sports Channel - Philadelphia, Pennsylvania VC2
- 2 - Action Pay-Per-View VC2
- 3 - Sports Channel America VC2
- 4 - Cable Video Store Pay-Per-View VC2
- 5 - New England News Channel
- 6 - Madison Square Garden Network VC2
- 7 - Sports Channel - New York VC2
- 8 - Program Guide
- 9 - Sports Channel - Chicago, Illinois VC2
- 10 - Value Vision
- 11 - Sports Channel New York Plus VC2
- 12 - International Channel VC2
- 13 - NESN (New England Sports Network) VC2
- 14 - Sports Channel - Florida VC2
- 15 - Shop-At-Home
- 16 - Sports Channel - Ohio VC2
- 17 - misc. sports channels/Shop-At-Home
- 18 - Spice (Adult Pay-Per-View) VC2
- 21 - Nostalgia Television
- 22 - Playboy - Nights VC2
Silent Network/Americas Disability Network/
Satellite City all these days....
- 23 - Sports Channel New England VC2
- 24 - Home Shopping Club Entertainment

SATCOM K2 81 West Ku band only

- 2 - NBC - East
- 8 - Cycle Sat
- 11 - NBC / CNBC
- 12 - Conus feeds
- 14 - NBC feeds
- 16 feeds
- 19 - NBC feeds
- 22 - NBC feeds
- 27 - NBC News Channel - feeds
- 28 - AT&T - MAC
night - NATN - Chinese programming service
- 30 - NBC feeds



GALAXY 2 74 West Odds-Horizontal/ Evens-Vertical
This satellite is used primarily for feeds and a large
menu of SCPC audio services

SATCOM 2 72 West Odds-Vertical/ Evens-Horizontal

- 1 - ANA - Arabic Network of America - evenings
- 2 - WRAL - Ch. 5 - Raleigh, North Carolina (CBS) VC2
- 3 - feeds
- 4 - WABC - Ch. 7 - New York, New York (ABC) VC2
- 5 - NASA feeds NOTE "L"
- 7 - All News Channel VC2
- 11 - Home Shopping Spree
- 12 - WXIA - Ch. 11 - Atlanta, Georgia (NBC) VC2
- 13 - NASA Select Television
- 18 - International feeds
- 20 - feeds
- 21 - feeds
- 22 - NHK - Tokyo Japan feeds
- 23 - feeds
- 24 - feeds

SPACENET 2 69 West Odds-Horizontal/ Evens-Vertical

- 2 - Dr. Eugene Scott's University Network
- 3 - WorldNet (U S Information Agency)
- 5 - Channel America
- 7 - Mainstreet Television
- 9 - Telemundo Network primary feed
- 10 - Galavision Europe (to PanAmSat)
- 11 - ESPN International MAC (to PanAmSat)
- 17 - Telemundo feeds
- 19 - KBL Sports - Pittsburgh, Pennsylvania VC2
- 20 - AFRTS MAC
- 21 - Cornerstone (WPCB -Ch. 40 Pittsburgh/Greensburg//
WKBS -Ch 47 Altoona/Johnstown, Pennsylvania)
- 22 - SUR - Panamericana Television - Lima, Peru
relay of many news and entertainment programs from
Peru, Argentina, Brazil, Chile, Venezuela, Colombia,
Ecuador, Dominican Republic)
- 23 - Empire Sports - New York
- 24 - Hero Teleport - Miami, Florida



On the KuBand side are the following
23 and 25 - 2 separate feeds of KET - The Kentucky,
Educational Television Network
on other transponders - Florida News Network
Tie-In Educational Network
(2 transponders)

BRAZIL SAT - 70 and 65 West

A number of services in Brazil use this satellite
but where is not known to me since the footprint
of this bird is nowhere near my location. Perhaps
someone in extreme south Florida can see something
from it. While using PAL color - they use a 525 line
scan, I believe. DXers take note.

INTELSAT VB 513 53 West *=service not beamed here

- 4 - Argentina Cable TV (PAL)*
 - 11V - Serte Paris, France in PAL, SECAM and NTSC
 - 14V - Ch. 13 - Buenos Aires, Argentina MAC and PAL
 - 14H - BBC and ITN and others to US from London
uplink usually in PAL
 - 16H - usually a NTSC feed from London and Europe
- NO VIDEO NOTED ON THE KU BAND



PANAMSAT 1 45 West

generally hard to receive at this location, though
some in deep south could probably get pretty clear
reception of this bird on the C-Band side

- 1 - CNN MAC
- 2 - TV Nacional de Chile
- 5 - HBO Ole MAC
- 10 - ESPN MAC
- 15 - news feeds
- 21 - something in MAC
- 22 - primary feed of SUR - Panamericana Television
Lima, Peru
- 24 - news and special events feeds

ON THE KUBAND side things are much clearer with a good
US spot beam

- 1 - European news feeds to US in PAL and NTSC
 - 4 - Feeds in day - night Belgrade Television in NTSC
 - 14 and 15 - NHK Tokyo, Japan feeds
- a few other transponders may also be used for occasional
feeds

TDRS EAST 41 West

This is an active bird that I have never anything on NASA uses the Ku side for tracking and data relays and a US operator is discussing the C-Band for some type of transAtlantic services

INTELSAT V F4 (506) 34.5 West

While this is a new replacement satellite - it still seems to be in an inclined orbit
23 and 24 are used for news feeds - some of which have been noted lately with a fairly good signal considering past performance - this time from Rio at the Ecology Summit Nothing has been noted on the KuBand side.

INTELSAT VI F4 (601) 27.5 West

2 - TVE International = Madrid, Spain
3 - feeds
8 - Televen - Caracas, Venezuela *
9 - VTV - Caracas, Venezuela*
9 - Brightstar - London, England feed to North America
11 - NBC London feeds
14 - ABC London feeds
15 - WorldNet - USIA
16 - CBS - London feeds
18 - CNN - london feeds
22 - FBS/CIA feeds to US MAC
No KuBand noted here - it is beamed E to Europe

INTELSAT V1 F2 (605) 24.5 West

This satellite is carrying mostly data services though transponders 23 and 24 are beamed W with news feeds. No Ku has been noted

INTELSAT V F2 (502) 21.5 West

Was in inclined orbit. May now be replaced by the new Intelsat K which should carry much of the Olympic Games from Barcelona, Spain to North America

INTELSAT V F6 (515) 18.5 West

Again another oldie which carries news feeds on transponders 23 and 24. Nothing noted on Ku-Band

STATSIONAR/GORIZONT 4 14 West

1 and 6 have not been noted recently due to tree obstructions

STATSIONAR/GORIZONT 11 11 West

2 transponders seemed active when I was able to receive them until early Spring. 1 had usual Central TV type programs in SECAM while the second transponder carried feeds to CNN of the coup attempt and other feeds in NTSC.

This completes the listings of the video services received here at this location in Baltimore, Maryland. Satellite users should retain this list and update it as changes occur. In the next few months many changes will occur with the launches of Satcom C3 in September to replace F1 at 131 west. Satcom C4 to replace F4 in August, Galaxy 4 to be located where the current Galaxy 6 is located in December, and Galaxy 1R at 133 West to replace Galaxy 1.

That's all for now - see you in 30 and good DX!

73's

George

PHOTO-NEWS WTFDA

MAILING ADDRESS:
PHOTO-NEWS
12284 Nice Road
Akron NY 14001-9529

OCTOBER 1992

Trops season has begun! Here in Western New York, a rare east coast opening in August lasted two days 22 & 23rd. And one which started September 12th and still going on today the 14th is bringing in stations from eastern NY to mid continent.

Richard Shaftan - Rockaway New Jersey is our first reporter.



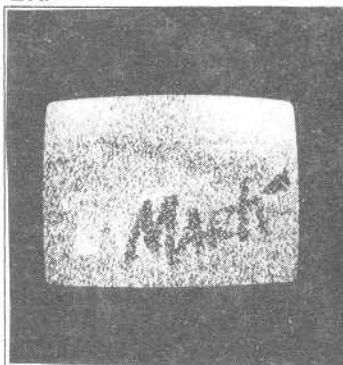
WLTN-19
Columbia South Carolina
600 mile tropo
seen May 20, 1992
at 0900 EDT



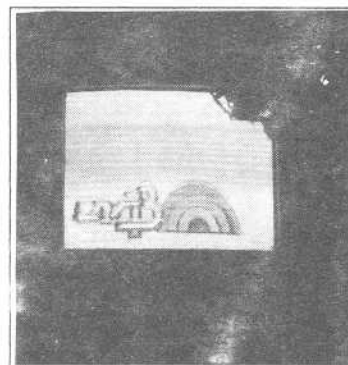
WPBT-2
Miami Florida
1100 mile E-skip
seen June 13, 1992
at 0900 EDT
"over local WCBS New York"

Thanks Rich.

Next is Chris Dunne - Pembroke Pines Florida using an FM antenna to capture his DX.



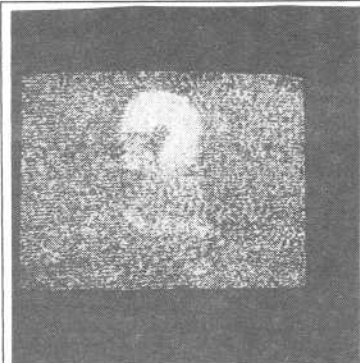
TV MARTI-13
Cudjoe Key Florida
110 mile tropo
seen June 1, 1992
at 0400 EDT



ZNS-13
Nassau Bahamas
200 mile tropo
seen July 2, 1992
at 1300 EDT

continued
on
the next
page

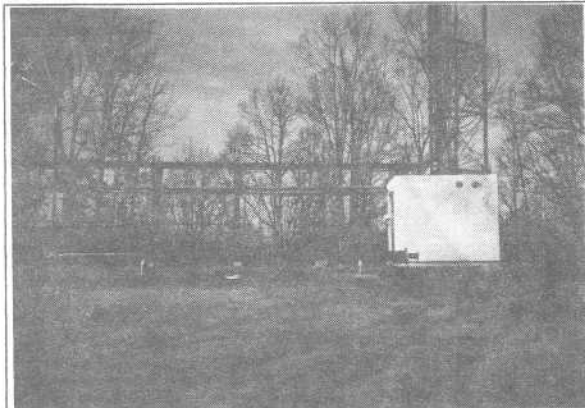
....we saved the best from Chris till last.



WKAQ-2
San Juan Puerto Rico
1000 + mile tropo
seen July 2, 1992
at 0210 EDT

Thanks Chris

From Dave Moody - Jasper Ohio via TV NEWS editor Doug Smith are site fotos of WPBO-42 Portsmouth Ohio



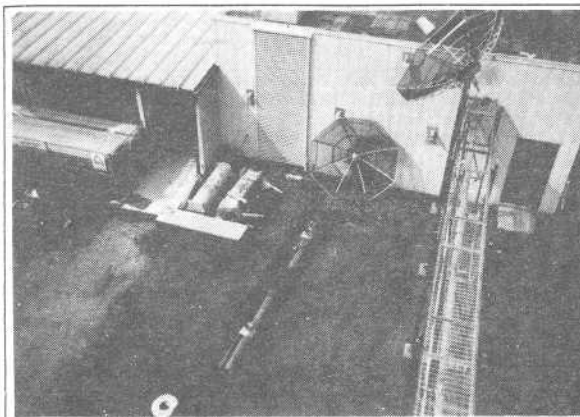
WPBO-42's tower
base and new
transmitting
antenna on the
ground



full view of the
new transmitter
building

continued
on the next
page

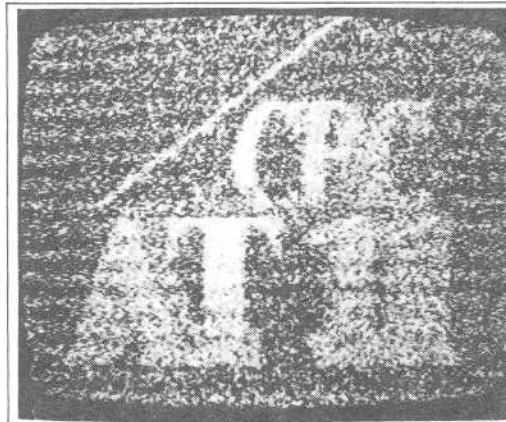
WPBO-TV transmitter site fotos from Dave Moody...



WPBO-TV
new building left
old building
right

Thanks Dave & Doug.

Robert Kramer - Chicago Illinois sent in a stack of DX fotos. Bob's equipment is: 1978 RCA 19" b&w, Sony 19" color set, Mitsubishi HS-422UR Stereo VCR. Archer U-120 UHF Yagi at 68', Archer V-185 log periodic at 58'; both antenna fed with RG-11 coax, 3 Archer adjustable preamps model 15-1113A, Alliance HD-73 rotor. Camera equipment: Ricoh XRM 35mm loaded with Kodak T-Max 400 b&w film



CBLN-40
London Ontario
338 mile tropo
seen September 11, 1991
at 0358 CDT

much more from Robert Kramer next time.

Station News: CHEX-12 in Peterborough Ontario has put on a relay near Toronto; +CHEX2-22 Oshawa Ontario. Reported ERP is from 2.8 to 7 kw.

Till next time, DAVE



(unIdentified DX)
October 1992

Matt Sittel
603 Fulton Rd., Apt. B24
Tallahassee, FL 32312
(904) 386-2212
(please don't call
after 2200 unless DX!)

Well, this column should have appeared in August's VUD. But yours truly forgot the size specifications for typing this column so it didn't! There was no way I could get it re-typed for September's VUD as I had just moved in and I didn't have time to type with the unpacking that had to get done. Then I plunged right into school and there went the free time! But CCI is here, just a little late. I apologize. Now, on to the unIDs:

Michael Hawk (N00SY), 10212 P St., Omaha, NE 68127-2130

1991 TV:

Fri Aug 2 tr ch 6 0150 CDT -- Religion. PTA: central and south IA, N. MO, E. KS.

1992 TV:

Tue May 5 Es ch 2 1705 CDT -- 2 unIDs. One mentioned a 315 area code (north central New York). Much CCI. PTA: NY. Where is WGRZ located? (Buffalo. It's in AC (716). WKTU in Utica is AC (315), and AC (607) is close enough to perhaps necessitate the specification of AC's.-mcs)

Fri May 8 Es ch 2 1628 CDT -- PBS. "Mr. Rogers" to 1630, then "Sesame Street". PTA: ID, MT, OR. (There aren't any PBS 2's there that I know of. WMAB in State College, MS, runs both at the times you saw them, though. Could you have gotten this off the back of your antenna, Mike? -mcs)

Fri May 8 Es ch 2 1814 CDT -- 2 unIDs. One had what looked like "Heritage News" then stock market report with "NASDAQ Movers". One may have been PBS, any others? S/SE beam heading. PTA: LA, MS, TN, AL. (That "NASDAQ movers" sounds like "Nightly Business Report". WPBT Miami and WUND Columbia, NC check at that time. WSJK Sneedville, TN, WDIQ Dozier, AL and WMAB do not.-mcs)

??? ??? ?? Es ch 2 1200 CDT -- Probably more than one station. One had "Days of Our Lives". I also saw a commercial for "Little Lotto". This Lotto commercial had a wizard as a logo. Another station ID'ed as "Global Television Metro" (Probably Canada.) PTA: ON, PQ, any state which borders one of the Great Lakes. ("Little Lotto" is an Illinois lottery game, so I'm thinking that was WBEW. "Days of Our Lives" checks for Global so I think that would be CIII-2 in Bancroft, ON. That would be some short skip if you had WBER!-mcs)

1992 FM:

Mon Jan 6 Es 98.9 1751 CST -- SS ID "RCR". PTA: S TX, NL, TAM, COA.

Sun May 24 Es 94.7 2022 CDT -- Music (either o or r), and mention of "Desert Island Disks". PTA: NY, NJ, MA, CT, RI.

Mon May 25 Es 89.9 1327 CDT -- Several mentions of ECSU, or similar to it. Must be some college. PTA: SC, NC, VA, MD, WV. (It is WRVS, in Elizabeth City, NC. ECSU stands for Elizabeth City State University; I used to get them in NC.-mcs)

Mon May 25 Es 101.7 2007 CDT -- New York Mets baseball. PTA: same as above.

Thu Jun 11 tr 91.1 2358 CDT -- Fair with rap and rock music. ID slogan was "Z-91.1". Didn't ID legally on the hour. Could be KANZ-KS, but thought they were jazz. PTA: KS, MO, OK.

Sun Jun 14 Es 107.7 1027 CDT -- ID slogan was "Classic Country 108". PTA: TX, NM, CO, AZ, UT, south CA.

Wed Jun 17 Es 101.5 1620 CDT -- Mention of Stamfordville or something similar. Ad for Tera Motors whose phone number was 462-TERA. PTA: PA, NJ, NY, CT, DE, MD, VA, WV.

Wed Jun 17 Es 92.1 1701 CDT -- Brief with "Soul 92" slogan. PTA: DE, VA, NC, SC, WV. (That is WRSV, Rocky Mount, NC, one of my old locals.-mcs)

Wed Jun 17 Es 102.5 1759 CDT -- ID as "Oldies 102.5" (no legal ID), then ad for "Easy Rider Bikes". PTA: SC, NC, GA. (WXLV, Charleston, SC.-mcs)

Wed Jun 17 Es 99.1 1816 CDT -- "Atlanta Braves Network" baseball. PTA: GA, SC, FL.

Christopher W. Hanley, 1321 Beecher Ave., Galesburg, IL 61401-2027

1992 TV:

Sat May 23 Es ch 3 1858 CDT -- PTA: NE US. Political ad for Senate or U.S. House race-sounded like Joe Chippa or Chipper (non-incumbent); news item at problems at Wolfon (?) prison.

Mon May 25 Es ch 2 2030 CDT -- PTA: NE US. Documentary about African tribe with English narration and subtitles; PBS or CBC? (I happen to have

CCI (unIdentified DX), October 1992 Hanley, cont.

page 2

the Boston TV Guide for that exact week. The show was "Millennium" and read: "The Art of Living" considers the integration of artistic values with everyday life. Featured: a young woman of Niger's Wodaabe tribe whose story about an annual festival describe's her culture's views of beauty and love; a Dogon tribesman of Mali, who joins the dance and ritual following his uncle's death." Sounds like it was them.-mcs)

Sun May 24 Es ch 2 1927 CDT -- "Graymore and Gladdigan" (?) furniture ad. NBC. (Greg Coniglio told me there's a store with a similar name in Buffalo. I'd say you had WGRZ.-mcs)

Sun May 24 Es ch 5 1957 CDT -- Ad for Jayne Witney nighttime talk show; Northwest Airlines. (WGRZ-2 in.) (WEWS Cleveland runs that show, so it could have been them.-mcs)

Sun Jun 14 Es? ch 4 0042 CDT -- "The Byron Allen Show", call-in show with guests. After WHBF-4 Rock Island sign-off. TX, NM, ND and MT in earlier Evangelical church service, then (at 1200) half-hour skin care commercial with Cher. KENW-3 Portales, NM in at the same time.

Sun Jun 14 Es ch 3 1500 CDT -- Community announcements for Glasgow, MT. (I've seen on KBME, Bismarck, ND ads for a Prairie Public TV viewer meeting/appreciation gathering or something that was being held in Glasgow, MT (!!!) I think that was what you might have seen as well.-mcs)

Sun Jun 14 Es ch 2 1515 CDT -- Cubs vs. Montreal baseball. In English, apparently on Cubs' network.

Mon Jun 15 Es ch 2 1830 CDT -- Ad for the "Great Canadian Giveaway" contest at Canadian Tire. Then to the "Golden Girls".

Mon Jun 15 Es ch 2 1837 CDT -- Local news: Attack helicopters leaving a Montana city (don't know which one) for a new base.

Tue Jun 16 Es ch 2 0626 CDT -- Ads for Westside Geo-Chevrolet, L.W. Marks jeweler.

Tue Jun 16 Es ch 2 0626 CDT -- Alternating with above, radar-style map of Texas, labeled "Texas Today". (KPRC runs news at this time. I don't know if this was the name of the newscast or not; it would make sense as "Today" follows it.-mcs)

Wed Jun 17 Es ch 3 1628 CDT -- News of Berlin (New Hampshire?). NC and SC in just after this.

Wed Jun 17 Es ch 2 1830 CDT -- "Entertainment Tonight" with ad for "Portfolio" furniture stores. WPBT-2 Miami in just after this. (WESH runs "Entertainment Tonight" then.-mcs)

Frank Merrill, PO Box 669, Macomb, IL 61455

1991 TV:

Fri Feb 8 tr ch 68 0450 CST -- TBN from SSSE. PTA: E.MO, E.AR, W.KY, W.TN.

Tue May 28 tr ch 20 0443 CDT -- "Home Shopping Spree" from SW. PTA: OK, SE KS, SW MO. (LPTV or translator). Also seen at 0500 CST on Sat Jan 4 1992. (How about K20CT Springdale, AR?-mcs)

1992 TV:

Sat Jan 4 tr ch 64 2244 CST -- TBN from SSSW. Had suspected K64DB Alexandria, LA, as signal ebbed & flowed with K1AX-31, but telephone calls turned up no TBN/LPTV in operation on ch.64 there, could it have been brand new? PTA: MO, AR, LA. (I see a TBN in Jackson, MS on 64, but nothing in that PTA.-mcs)

Mon Jan 6 Es ch 3 1803 CST -- unID Mexico with ID slide as shown. (See Figure 1) Suspect XHJMA-Chih. or others surrounding ch.3 as XHIT-4 was "blasting in".

1980 or 1981 FM:

??? ??? ?? Es 107.5 ???? ??? -- KIKN, k format. PTA: TX or surrounding states. Also saw an ad for this station on unID ch. 6 same day! Never saw this station turn up in FM Atlas. Logged in Toledo, OH.

1989 FM:

Sun Jun 18 Es 96.9 1300 CDT -- "...en Tampico, Tamaulipas, Mexico" at tune in, obviously a legal ID but has never been listed anywhere (Monterrey, NL, Mexico) String of Monterrey ads here, but station still not in FM Atlas as of 1992. Note: Both also fit the apparent 800 kHz allocation schemes for their cities.

1991 FM:

Tue Jul 18 Es 104.7 1123 CDT -- "FM 104.7 K-F-X", oldies format. PTA: Intermountain region (not AZ/NM), western NE/SD/ND, or double hop from Pacific NW.

Tue Jul 18 Es 103.1 1957 CDT -- Fady legal ID for XHM- (sounded like XHMB or XHMP). PTA: On or near Mexico Gulf coast between Tampico and Cancun.

Tue Jul 18 Es 93.3 2003 CDT -- "FM Globo" or "FM Toba". Suspect XHPS, Veracruz.

1992 FM:
Mon Jan 6 Es 90.9 1715 CST -- (Chihuahua, Chih., Mexico) "Super Estrella", string of Chihuahua ads.

Wed Jan 8 Es 104.5 1104 CDT -- "Estereo Vida". PTA: unlisted Monterrey, NL suspected.

Wed Jan 8 Es 105.3 1104 CDT -- "Papaganos F.M.". PTA: unlisted Monterrey, NL suspected. (Frank, I never received the last CCI photo you sent. Should I write USPO CCI?-mcs)

Jeff Kruszka, 2824-E Steamship Cir., Harahan, LA 70123

1992 TV:
Sun Jun 14 Es ch3s5 1227 CDT -- Cuban, 3//5, ID looked like "TVO" with "Cuba Vision" spinning inside "O", followed by talk by Castro at 1230. (Sounds like the "TV6" network that ID'ed as "CubaVision 6" last time I saw them. I've only seen their TP in '92, but I think you definitely had Cuba.-mcs)

Mon Jun 15 Es ch 2 1849 CDT -- "Wheel of Fortune", suspect KMID. PTA: TX.

Tue Jun 16 Es ch 3 1754 CDT -- Local news, with a 3 in a heart on front of news desk. PTA: Midwest. (KLNE in at 1730) (Isn't that KTVO?-mcs)

Wed Jun 17 Es ch 3 1803 CDT -- "All In The Family". PTA: OH, NY, PA.

Thu Jun 18 Es ch 3 2220 CDT -- Local news with stylish 3 with lines running through it in background. Suspect KDLH. PTA: MN, ON. (That sounds like KIMT's logo, Jeff. -mcs)

Thu Jun 18 Es ch 5 2233 CDT -- "Love Connection". KFYZ? PTA: ND, SD. (My listings say no to KFYZ, KDLT, and KHAS. And 3 in Rapid City runs "Love". Also, KSTP and WOI check negative. So does KYCU.-mcs)

Thu Jun 18 Es ch 5 2237 CDT -- MCTV news. Sudbury mentioned several times. Had to be CICI. PTA: ON.

Fri Jun 19 Es ch 3 0017 CDT -- "Studs". ND in. PTA: ND, SD, ON, MN. (KDLO checks.- mcs)

Fri Jun 19 Es ch 3 1820 CDT -- "Dennis the Menace" cartoon in SS. PTA: Mexico. Local phone number in ad 709-71-82. (When I get an SS running US EE cartoons, it's always XHY. That's my guess.-mcs)

Sat Jun 20 Es ch 3 1208 CDT -- "Bob Newhart". PTA: WI, MN.

John F. Combs, PO Box 721027, Orlando, FL 32872

1992 FM:
Fri Jun 5 MS 97.1 1009 EDT -- "...Bill Anthony is fighting for tough new laws to protect our neighborhoods--one reason why Anthony is endorsed by sherriffs..." PTA: ??

Sun Jun 14 Es 106.9 1102 EDT -- SS with pseudo-ID's as "Caena Radio Centro". KSAW is only U.S. SS I see on this frequency and no Mexicans were heard in the opening. Can anyone confirm? PTA: TX.

Mon Jun 15 Es 94.3 2049 EDT -- Station with ad for business in Enid, OK. No 94.3 anywhere near Enid. Help! PTA: OK.

Mon Jun 15 Es 93.5 2124 EDT -- KC Royals baseball. Could be just about any 93.5 in MO or KS. Can anyone confirm, or narrow the range of possibilities?

Tue Jul 7 Es 93.9 2021 EDT -- Ad for business in Milwaukee, WI. Closest stations on 93.9 are Sturgeon Bay, WI and Chicago, IL, and neither are likely to run an ad for Milwaukee. PTA: WI.

Tue Jul 7 Es 93.1 2029 EDT -- "Northeast Wisconsin's K-Rock". I don't see any 93.1 in what I would consider "northeast" Wisconsin. There is WIMK in Iron Mountain, MI, which would have coverage in northeast Wisconsin, but I would think they are oriented toward the Marquette, MI market. Ideas? PTA: WI. (Well, WIMK is r in the FM Atlas. The calls fit, too. Greg and I both think it was them. -mcs)

Robert Grant, KD8EN, 8226 Beaverland, Detroit, MI 48239 (313) RE.0-8966

1992 TV:
Thu May 7 Es ch 3 1237 EDT -- "Love Connection", possibly KOTA. (KTWO in at 1200) (The most recent listings I have for KOTA say "Love Connection" is run at 1230 MDT. However, I know I've seen them with that program, and I think at 1230. I wonder if they recently switched from 1030 MDT to 1230 MDT?-mcs)

Wed Jun 3 tr ch 66 0420 EDT -- Ø beat to W66BV Detroit, FSK-Morse ID sounded like "W66BD" PTA: IN. (I see a W66BD in Fort Wayne that is listed as TBN.-mcs)

Fri Jun 5 Es ch 3 0145 EDT -- "Geraldo", zero offset. (You didn't list a PTA, but the only thing I found was WBTV; it fits!- mcs)

Wed Jun 10 tr ch 17 0520 EDT -- TBN, same ph# as W66BV, but not same program.

Wed Jun 10 tr ch 43 0520 EDT -- TBN // to unID-17 above, PTA: IN, OH. Not Ø-WUAB.

Mon Jun 29 tr ch 50 0130 EDT -- xltr of WNF-68, which used a dual "50/68" ID. PTA: N. Central OH. (W50BE Mansfield, maybe?-mcs)

Mon Jun 29 tr ch 32 0130 EDT -- rel. with 714 area code (almost certainly TBN), not zero beat to CICO32. PTA: OH.

Mon Jun 29 tr ch 12 0155 EDT -- 3/4 CB w/vy large EDT digital time and TT, not zero beat to WJRT nor CICO12. PTA: northern ON.

Mon Jun 29 tr ch 32 0540 EDT -- FSK-Morse ID sounded like "W32AN", possibly same unID-32 as above.

(mobile on I-40 near Shamrock, TX):

Mon Jun 20 Es ch 2 ??? ? ? ? -- possible newscast with a phone number given: "1-800-TV2-INFO" (which is not dialable from Detroit) PTA: Great Lakes area.

Mon Jun 20 Es ch 2 ??? ? ? ? -- "Tom Raper RV" ad (Richmond, IN, but their ad radius is huge) time for both of these loggings was about 1730 CDT if my memory is correct. (Wonder if WDIN ran that ad? That's pretty close.-mcs)

(from Dalhart, TX):

Tue Jul 21 Es ch 2 0959 CDT -- end "Geraldo", zero beat to KACV, and with a circle 2 logo similar to those of WBAY-WI (which is +, and thus Ø to KACV unless KACV unless KACV changed before coming to air) and WKRN-IN (-)

(Mobile on US 87, Clayton to Raton, NM):

Tue Jul 21 GW 50-55 1100 MDT -- noted a translator (or full-service satellite?) of KNME-5 which seemed to have fantastic coverage.

(from Carleton, MI)

Tue Jul 28 Es ch 4 2000 EDT -- "Cosmos" zero offset (PTA: WY, ND, ID)

(from Detroit)

Wed Sep 2 tr ch 42 0300 EDT -- rel. with (714) AC ph# (likely TBN) not Ø to CKCO4. PTA: IN, IL.

Below are some unIDs culled from reports to Greg's NFM DX column. Thanks, Greg, for asking people to send their unIDs in. Let's save Greg some time by not sending them in the DX reports; I know he'll appreciate your co-operation and so do I, as I'm anxious to help YOU solve your unIDs!!

Ayodele Adewakun, Akure, Ondo State, Nigeria: ***Note: 1992 unIDs below unless otherwise noted.***

1991 FM:
Fri Jun 7 ?? 88.636 0330 ??? -- Tone, jingle in again at 0410 with programme parade.

Jim Renfrew, Rochester, NY:

1992 FM:

Fri May 8 Es 93.7 1237 EDT -- rock under WBLK. PTA: FL. (WMMZ Ocala?-mcs)

Tue May 12 Es 91.9 1003 EDT -- mentioned "Minnesota's governor" (KGAC?-mcs)

Tue May 12 Es 97.5 1306 EDT -- Paul Harvey. PTA: OK, KS.

Tue May 12 Es 93.1 1331 EDT -- k, CDT, ad for wheat growers. (KGLS, Pratt, KS?-mcs)

Jerry Monroe, Marcellus, NY:

Mon Mar 30 GW 97.7 2100 EDT -- xltr for WPCX-106.9, strong signal from east. WPCX has no idea who this is.

William R. Hepburn, Brampton, ON:

Mon May 25 Es 106.7 2102 EDT -- "Hits 106.7", heard KQLD at 2055.

Mon May 25 Es 94.3 2138 EDT -- MN PSA. (KMSR, Sauk Centre, MN?-mcs)

Paul Mount, Lincroft, NJ:

Sun Jun 14 tr 90.9 0509 EDT -- BBC nx, temps around NY state

Harry Hayes, Wilkes-Barre, PA:

Sat Jun 13 Es 91.1 2100 EDT -- Peach State Public Radio. (Well, it is one of two. The only way I can tell you to distinguish between the two is by the ID's. WSVH Savannah almost always says their calls, then Peach State Public Radio. WABR Tifton is in the network and calls for them are part of a list of other stations like WXVS Waycross, WUNV Albany, etc. So if they said only Peach State Public Radio and had no local mentions, I'd say it was Tifton. Savannah tends to mention local underwriters, weather, etc.-mcs)

Saul Chernos, Peterborough, ON:

Sun May 24 Es 92.5 2130 EDT -- "KWYN" (Wynne, AR per Bill Nienajadly. -gc)

Sun May 24 Es 97.5 2144 EDT -- // CKGL-96.7 (cross-Canada country music show) PTA: AR (???-gc) (???-mcs)

Sat Jun 13 Es 94.3 2010 EDT -- "Power 94", rap. PTA: MS. (How about WJTT in TN? I think that's still their slogan.-mcs)

Sat Jun 13 Es 99.3 2219 EDT -- mentioned Iola. PTA: TX, CO. (Iola is a town in southeast Kansas. How about KIOL in Iola, KS? That sure fits!-mcs)

Jeff Falconer, Clinton, ON:

Mon May 25 Es 92.1 2022 EDT -- Atlanta Braves BB. PTA: GA,FL. (Haven't heard any 92.1's around me that run Braves BB.-mcs)
 Sat Jun 13 Es 99.1 2139 EDT -- g\$, "Light 99 FM" (This is KBUZ, El Dorado, KS-gc)
 Sat Jun 13 Es 104.3 2145 EDT -- k\$, "The Fox". PTA: Midwest
 Sat Jun 13 Es 105.5 2203 EDT -- "K-Country", mentioned Warren. (How about KWRF, Warren, AR? The FM Atlas says their slogan is "Magic 105", but still lists them as k.-mcs)
 Sat Jun 13 Es 107.9 2205 EDT -- rs\$, "Z108".
 Sat Jun 13 Es 99.5 2220 EDT -- mentioned Taylor Ranch, Paradise Hills in NM.
 more from Jim Renfrew, Rochester, NY:
 Sun Jun 7 tr 94.7 1651 EDT -- "Q95", ID popped in using the kind of voice that I believe would be matched with a rock format. WFBQ?
 Sun Jun 7 tr 94.7 1710 EDT -- Auto race, // 95.9 WFLR, suspect WPHD.
 Sun Jun 7 tr 94.7 1713 EDT -- "WQOC", no station found with these calls on FM, AM, or TV, Falcon Furniture ad.

Rich Shaftan, Rockaway, NJ:

Sun Apr 5 ?? 104.9 2257 EDT -- "WAZR, your greatest hits of the '60's, '70's, '80's, and '90's." Greg Coniglio says: "Maybe WSRD? Their AM is WIZR 930." (Is there an LMA with WESI, Strasburg, VA? The calls are for 93.7 Woodstock, VA, and I noticed that 104.9 WESI is nearby. But I can't recall if there is an LMA between the two.- mcs)
 Sun Apr 12 trs 107.9 1442 EDT -- oldies, "FM 107.9"
 Mon Apr 13 trs 107.7 0024 EDT -- "YRD Sender 107.7"
 Mon Apr 20 trs 98.9 2200 EDT -- unID thru WUSL w/lame. New Harrisburg?
 Wed May 20 Es 106.5 0032 EDT -- "Carolina's Best Rock'n'Roll". (WSFL, New Bern, NC.-mcs)
 Mon May 25 Es 92.9 1221 EDT -- "Operation Rescue update, featuring Randall Terry". PTA: LA, TX. (Isn't Utica, MS religious? -gc) (Sounds like some sort of Memorial Day telethon to me.-mcs)
 Mon May 25 Es 95.3 1417 EDT -- Ad, "Lane County Bank & Trust". There's a Lane County in Kansas but no 95.3 in area. Same for Linn County, MO. There is a Lynn County, Texas and a 95.3 in county seat of Tahoka, but no "Lynn County Bank & Trust". Help!
 Mon May 25 Es 95.3 1430 EDT -- "Magic 95". PTA: OK, KS. (Does KMGZ, Lawton, OK still use that slogan?-mcs)
 Mon May 25 Es 95.7 2026 EDT -- CW w/Garth Brooks special and ad for "CD2". PTA: AR, NE.
 Mon May 25 Es 99.7 2102 EDT -- Heavy metal, thinking Muscatine, IA.
 Mon May 25 Es 94.9 2125 EDT -- Talk show on ethics issues. Could be KJLT, or Cape Cod.
 Greg Coniglio, 5100 Glenwood Dr., Williamsville, NY 14221

1991 FM:

Sat Dec 28 tr 100.3 eve. EST -- to NW, mono, first with oldies, then some sort of ethnic program. No ID's or announcements at all. PTA: MI, ON.

1992 FM:

Sun May 24 Es 89.3 2110 EDT -- Spanish on 89.3 and 90.1! Other skip to MO. Broadcasting Yearbook '92 shows KCUR and KKFI running such programming but when?
 Mon May 25 Es 94.1 1225 EDT -- Satellite a/c "Star Station". Is this WXLN, which was heard later with "Sunny 94.1". (Wasn't Oak Hill, WV once using that slogan? I know they're satellite.-mcs)
 Mon May 25 Es 96.7 1305 EDT -- urban, "Mix 96". PTA: coastal MS, LA. Is this WQFX?
 Mon May 25 Es 106.3 1334 EDT -- Rock format, "X-106.3" PTA: LA, AL, MS.
 Mon May 25 Es 100.1 2115 EDT -- Sounded like satellite a/c, but with somewhat of a Canadian accent. Was there any such skip noticed by anyone else, Maritimes perhaps?
 Sat Jun 13 Es 95.9 2020 EDT -- "Kon Country 96" or "Kan Country 96", I thought KAAAN moved to 95.5?
 Sat Jun 13 Es 98.3 2110 EDT -- "Oldies 98.3" jingle, "Big Dan Saturday Night at the Oldies", professional sounding station. (The slogan fits WGGC, Midway, GA. What was the PTA?-mcs)
 Sat Jun 13 Es 106.3 2204 EDT -- Ad for Idabel. Satellite country. I wrote KKBI Broken Bow.
 Sat Jun 13 Es 101.9 2216 EDT -- AOR, "Rock 102". CDT, DJ "Carla" or "Darla".

1992 TV:

Sun Jun 14 Es ch 3 1300 EDT -- Potential double hop. Sweden vs. Finland FIFA soccer game, in Spanish. There were ads, also in Spanish for a sitcom that appears weekday nights. During the game there were mentions of "Radio Caracas". At one point there was a slide on: "Deportes en RCTV" (or ACTV). This would seem to point to the Radio Caracas network in Venezuela, it's ch.3 transmitter in Barcelona, roughly

2400 miles away. My concern is that a different station, perhaps in Mexico, was relaying RCTV off the bird. There was a logo that looked like (Greg drew a screen with a black sector in the upper-left quarter of the screen, which may have had a design in white inside of it, and then the rest of the screen in white.-mcs) Did anyone happen to see anything from the Caribbean that day, or have access to a Venezuelan "TV Guide" to see if in fact they were carrying such a soccer game? Or does anyone know if someone else was carrying their programming? It is not known if RCTV was on satellite. No one has reported seeing that logo before on a Caribbean station? Thanks to Matt Sittel, John Combs, Chris Dunne, and George Jensen for advice. (You're most welcome! As I have told Greg, I had XHY in Yucatan about an hour before Greg's logging, and they were running soccer, apparently the same game as Greg saw, too. But none of the logos, Caracas mentions, etc. were seen or heard. I hope this one turns out to be Venezuela!-mcs)

Matt Sittel, CCI Editor

1992 TV, Kingsport, TN:

Tue May 12 Es ch 3 1045 EDT -- "Shining Time Station". Suspect KSWK. PTA: KS, OK, TX, CO.
 Tue May 12 Es ch 3 1230 EDT -- "Mr. Rogers". PTA: KS, NE.
 Tue May 12 Es ch 3 1348 EDT -- French talk show with AC (514) ph# on screen. PTA: MB.
 Thu May 14 Es ch 2 1048 EDT -- Local news program, with logo on the microphone. (See Figure 2.)
 Thu May 14 Es ch 4 1115 EDT -- "Montel Williams". PTA: south TX.
 Tue Jun 2 Es ch 3 1151 EDT -- Full CB TP, and "Dancing in The Dark" by Bruce Springsteen playing. PTA: Mexico.
 Tue Jun 2 Es ch 2 1336 EDT -- "Body Electric". Suspect KACV.
 Fri Jun 5 Es ch 3 1301 EDT -- "Shirley". Suspect CBHT.
 Fri Jun 5 Es ch 4 1328 EDT -- "Télé 4", "TVA" ID. FF. PTA: PQ.
 Fri Jun 5 Es ch 3 1356 EDT -- "LA Law" dubbed into FF. Radio-Canada, I think. PTA: PQ.
 Mon Jun 8 Es ch 2 1206 EDT -- Show with woman at a table working with crafts. KACV?
 Mon Jun 8 Es ch 2 1214 EDT -- History program. This may be KDTN. This and the above may be vice-versa, but I think they are both TX.
 Mon Jun 8 Es ch 4 1330 EDT -- "Classic Concentration". PTA: TX. KJAC? KCNC runs it at this time, however.
 Tue Jun 9 Es ch 2 1032 EDT -- "Pensimentos", a telenovela. May have been XHRIO.
 Wed Jun 10 Es ch 2 1249 EDT -- 3/4 CB with extra strip of colors in the middle. PTA: Mexico.
 Wed Jun 10 Es ch 3 2010 EDT -- Blue Jays baseball. Suspect CBHT.
 Sat Jun 13 Es ch 4 1036 EDT -- Western on, in with XHY. PTA: Mexico.
 Sun Jun 14 Es ch 4 3 morn EDT -- "Comantarristas", a sports talk show. PTA: Mexico.
 Sun Jun 14 Es ch 3 morn EDT -- "Peques y Pecas", a children's show. Suspect XHPN.
 Sun Jun 14 Es ch 3 1250 EDT -- Infomercial, followed by "Future Legends of Baseball" at 1300. The TVG I have had KREG's programs pre-empted by Olympics coverage, yet they did run an infomercial at 1230 before the Olympics. Help!! I'd love to log this station, after years of trying! PTA: CO.
 Mon Jun 15 Es ch 3 1004 EDT -- SRC ID, but one ID had calls that appeared to be CKSB. A FF movie. PTA: western ON, eastern MB.
 Mon Jun 15 Es ch 3 1004 EDT -- "Geraldo". Suspect WJMN.
 Mon Jun 15 Es ch 2 1126 EDT -- ID slide. (see Figure 3) PTA: Mexico, even with the above unIDs 90 minutes before!
 Mon Jun 15 Es ch 3 2054 EDT -- Documentary, with symbol on screen. Apparently not KENW. Saw this as an unID in an old CCI column, was it ever figured out then (about 1982)? PTA: TX, NM.
 Mon Jun 15 Es ch 4 2128 EDT -- Running CBS programming as it MDT, "Popeye's Fried Chicken" ad. This was likely one of two: KGBT or KDBC.
 Tue Jun 16 Es ch 4 1724 EDT -- "Growing Pains". PTA: TX.
 Tue Jun 16 Es ch 3 1848 EDT -- "Care Bears". Suspect XHY. (Dubbed into SS)
 Tue Jun 16 Es ch 4 1852 EDT -- Children's show entitled "TV O", SS. Cuba? Mexico?
 Fri Jun 19 Es ch 2 0101 EDT -- "European Journal". Suspect KUSD.
 Fri Jun 19 Es ch 2,4 0946 EDT -- Slide reading: "SEP, Unidad de Television Educativa, Telesecundaria, Junio de 1992". At 1000 the Mexican national anthem, followed by "Matematicas I, Primer Grado, Unidad VIII, Leccion 173". PTA: Mexico.

1992 FM, Kingsport, TN:

Sat Jun 13 Es 96.5 1131 EDT -- Numerous mentions of Oaxaca, also Tuxtla and Cuzco. This is Frank Merrill's dilemma! PTA: Mexico.

Sun Jun 14 Es 92.9 1044 EDT -- Mentioned Yucatan elections. Called themselves "Solidalidad FM" or something close to it. I heard this twice in Raleigh in '91 and I know it's Yucatan. Again, it's the same problem Frank has!

Sun Jun 14 Es 102.3 1347 EDT -- "Estereo Vida". PTA: S.TX, northern Mexico.

Sun Jun 14 Es 96.7 1508 EDT -- Slogan sounded like "K-Wine". PTA: west TX, E. NM.

Sun Jun 14 Es 97.5 1426 EDT -- "97.5 FM". Format was CHR to urban/CHR. PTA: central TX

Thu Jun 18 Es 102.9 2320 EDT -- "Power 103", CHR. Is this KRQU? PTA: WY, NE.

Sat Jun 20 Es 93.3 2135 EDT -- "Z-93 FM", oldies/AC. PTA: ND, MN. Either Jamestown, ND or has that new one in MN come on yet?

Tue Jun 23 Es 93.3 0235 EDT -- s, "The Z", "93 Jams". Maybe WWWZ, or better? PTA: AL, GA.

Thu Jun 25 Es 95.3 0609 EDT -- WCQS calls (Asheville, NC, 88.1). New xltr?

1992 TV, Tallahassee, FL:

Sat Aug 29 tr ch 32 0646 EDT -- Playing music. Pre sign-on? Maybe WHOA??

Sat Aug 29 tr ch 16 0847 EDT -- B/W movie apparently taking place in a submarine. WJWJ?

Sun Aug 30 tr ch 38 0930 EDT -- End of one religious show, into another. PTA: LA, TX.

Sun Aug 30 tr ch 28 0920 EDT -- Auto racing magazine show. WTGS? Or better??

1992 FM, Tallahassee, FL:

Wed Aug 26 tr 97.7 2313 EDT -- "97X". PTA: due north, maybe AL/GA border.

Sun Aug 30 tr 101.3 2341 EDT -- "Future Hits". Suspect WJDO. PTA: MS, LA.

Mon Aug 31 tr 105.7 0026 EDT -- Country oldies, "Sunday Open House". PTA: MS, LA.

ID's from past CCI columns:

John Combs, 5/92, p.20

Mon Mar 2 tr ch 29 0247 EST -- TBN, 0 to W29AB Ocala, FL... "W29BH, Biloxi, MS 22.80kW, formerly W02BG." - Fred McCormack

Nike Reid, 5/92, p.20

Tue Dec 10 tr ch 30+ 0007 EST -- Ads, game show. Not WCTE, WJIT, KDNL... "WXMT now runs movies at 2300 central/midnight eastern. Could be WLMT Memphis?" - Doug Smith

Matt Sittel, 5/92, p.21

Sun Dec 22 tr ch 9, 12 0130 EST -- "Lifestyles" on 9, "Arsenio" on 12... "Lifestyles of the Rich & Famous" is on WKRC-12; WCPO-9 airs news (presumably a rerun of the 11:00) at 0130 eastern. "Arsenio" is on WCPO-9 at 2330 Eastern; at 0130 eastern WKRC-12 runs "First Look". - Doug Smith. ("On Scene" is run on WCPO, so now I'm confused! - mcs)

Greg Coniglio, 12/91, p.9

Mon Jul 1 Es 104.9 0851 EDT -- "Lite 105", mention of Northwest Expressway. "KNTL-1049 is a religious station, so I wouldn't be surprised to hear it use a "Light" slogan despite KLTE's usage. - Doug Smith.

Eric Fader, 5/92, p.20

Mon Jul 1 Es 102.3 2005 EDT -- "at this time Hot 102, WFMS..." "Could be 102.5 WFMP? They do use the slogan." - Greg Coniglio.

Matt Sittel, 12/91, p.9

Mon Jul 1 Es 95.3 2037 EDT -- "KJ95" "Is probably KAGE-MN, who ID's as KG-95.3". - Mike Hawk.

Tue Jul 30 Es 94.3 1715 EDT -- "Q94" "according to NRC Log, WQZX-AL ID's as this." - Mike Hawk.

Thu Jul 18 Es ch 4 1930 EDT -- "The Challengers" "Challengers is an ABC program." - Mike Hawk. (It's syndicated. My CBS affiliate in Raleigh used to run it, and the Fox WETO ran it too. Did an ABC in your area run it? That might have been them! - mcs)



Fig. 1- F. Merrill
PTA: Chihuahua



Fig. 2- M. Sittel
PTA: north Mexico



Fig. 3- M. Sittel
PTA: Mexico (ch.2)

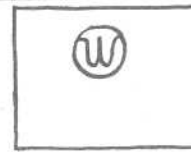


Fig. 4- M. Sittel
PTA: TX, NM. (ch.3)

Thanks to everybody for helping out! Also, much thanks to Frank Aden, Mike Hawk, Todd Brandenburg, Bill Nollman, Tom Bryant, George Greene, Greg Coniglio, and Fred McCormack for helping with TV Guides and schedules to make ID'ing these unIDs a little easier! With the new fall season upon us, that means new schedules, so if you can send those new schedules, I can help ID those unIDs from this upcoming season! I never got a West Texas TV Guide, so there's a lot of Amarillo and Midland unIDs that I can't ID. Can you help? Let's help out our fellow DX'ers by trying to solve some of their ID's! 73's Matt.

TELEVISION NEWS

Doug Smith, Editor
14 Brookside Court
Nashville, TN 37209-4503
615-356-8305 CIS 72777-3143

No one is proposing allowing common ownership of two VHF's in the same market, though.

ABBREVIATIONS USED IN THIS COLUMN:

ERP= Effective Radiated Power, in kW
HAAT=Height Above Average Terrain, in meters
AAT= Above Average Terrain
AG= Above Ground
ASL= Above Sea Level
nc= No change
TL= Transmitter Location
CP= Construction permit
MP= Modification permit
(modification of construction permit)
*= Non-commercial
CRTC=Canadian Radio-TV Commission

The Arizona legislature has decided not to tax pay-per-view cable programming. The proposed 3% tax would pay for the state's boxing commission.

Several TV stations have publicly speculated that the second channel, to be allocated for HDTV, might be used instead to broadcast a second (or more) digitally-compressed, standard-definition TV signal. In an interview in *Broadcasting*, FCC chair Alfred Sikes says the Commission probably will not approve this. In another comment, he reaffirms that the Commission expects stations' current channels to be returned to the FCC eventually.

The Commission has unanimously voted to refuse waivers of the "prime time access rule" to KRON-TV (4) and KPIX (5) San Francisco. This rule prohibits stations in the Pacific (and Eastern) time zone from broadcasting more than 3 hours of network programs between 7 and 11pm.

Waivers have been requested by a number of Western stations wishing to move prime time up by one hour. (6-10pm, like it is in the Central and Mountain time zones) Without the waiver, if a Western station runs 3 hours of network between 7 and 10pm, it cannot run the network's 10:30pm program. (in the case of NBC affiliates like KRON, this is the popular "Tonight Show") Currently, KRON and KPIX have moved up prime time anyway, and are just delaying the 10:30 network programs to after 11:00.

FCC officials said the Commission felt the waiver already issued to KCRA (3) Sacramento was adequate for testing the proposal.

Chase Communications has been granted permission to build a satellite of Denver's KDVR (31) in Fort Collins, Colo., on channel 22. Further details aren't yet available.

Comark Communications is preparing a 55kW UHF transmitter for HDTV tests, to be held in Charlotte, N.C., early next year.

APPLICATIONS TO CHANGE EXISTING STATIONS

St	Ch	ERP	HAAT	Call	City
NE	19	1683	348	*KXNE-TV	Norfolk
				(was 767kW, 339m)	
NM	2	28.2	1275	KKTO-TV	Santa Fe
				(TL: 35°12'55"N, 106°27'2"W	
				Sandia Crest, the Albuquerque antenna farm.)	
				(was 89kW, 600m)	

OTHER STUFF

Obviously, a slow month in Washington. Probably everyone is on summer vacation...

The transmitter site change for KKTO above supports my suspicion that they'll take over the Fox affiliation & programming of KGSW-14.

The Pittsburgh convention was certainly unusual! It was also very interesting, a great chance to meet with other DXers. I certainly hope the other attendees enjoyed it as much as I did. Didn't get a chance to DX TV down there, but did note (via a billboard across the street from the Pittsburgh Motel) that LPTV W63AU is using the non-ID "WNEU-TV", and carries local softball games.

In the wake of relaxation of radio's multiple-ownership rules, potential relaxation of the TV rules is now under discussion. Plans proposed include station limits of 18, 24, or none whatsoever, combined with national audience limits of 25, 30, 35, and 50%. Within a given market, many (but not all) propose allowing common ownership of one UHF and one other (either UHF or VHF) station.

FORUM

Lots of mail this month...

J.E. Lewis, Kansas City, MO:

"How can anyone apply for a TV station on channel 24 at Springdale, Ark. when there is a channel 24 north of Ft. Smith with at least a grade "C" signal there?" Good question; don't know how I missed that one! Either, as J.E. speculates, this is a typo and the station is actually to operate on some other channel, or, the other application is a challenge to the license of existing KPOM-TV.

It would seem rather unlikely that a channel 24 application for Springdale would be accepted for hearing-- even if not for KPOM-24-- because of the presence of KHOG-29 in adjacent Fayetteville; UHF stations are generally not allocated within 5 channels in adjacent transmitter sites.

Dave Sinclair, Vancouver, B.C.:

Dave sends along newspaper clippings and a CRTC news release.

First, from the CRTC: A public hearing on the Commission's policies on religious broadcasting in Canada is to be held on October 19 in Hull, Quebec.

"Under its current policy guidelines, issued in 1983 following an extensive public hearing, the CRTC will not, unless convinced otherwise, grant licenses for radio or television stations whose programming is primarily religious and devoted to the views of a single religion or sect. The Commission also requires each individual station to provide diverse programming and balance in the presentation of differing views on issues of public concern."

According to the news release, Parliament requires that broadcasters licensed by the CRTC offer a variety of predominantly Canadian programming, and a balance in the expression of differing points of view on matters of public concern. (It would seem that the "predominantly Canadian programming" requirement could not possibly be met by TBN programs from the USA, which several unlicensed stations have been airing)

CRTC chair Keith Spicer says that "the Commission invites all interested parties, including those who have been operating illegally, to argue their case within the law

on an equal footing with everyone else." And, "In the meantime, our existing policies remain in force. The law also obliges us to enforce the licensing process established by Parliament in the Broadcasting Act. Therefore, the CRTC is today (May 8) issuing mandatory orders requiring unlicensed operations in Alberta and Saskatchewan to shut down. We have given these illegal operators every opportunity to obey the law. They have repeatedly refused, indeed they are opening new illegal stations."

Stations affected are in Edmonton, Lethbridge, and Grande Prairie, Alberta, and in Lloydminster, Saskatchewan. Prior to a January 14 CRTC hearing in Edmonton, three other Saskatchewan stations voluntarily shut down.

The illegal stations affected by the order had until May 18 to shut down, or face penalties.

Also, from the July 9 *Wall Street Journal*, "As the manager of a TV station run by and for prisoners, Joe Corpier, a convicted murderer, faces some unusual challenges."

The maximum-security Jefferson City Correctional Center in Missouri operates its own cable channel within the prison walls. Programs include movies, prison news, and broadcasts by warden Michael G. Jose, mainly attempts to dispel rumors.

Corpier says he determines how popular movies are by listening to the noise level in the facility-- thriller films may silence the whole prison, while art films have been known to nearly incite riots. Prison officials do attempt to censor programming shown ("Escape movies aren't a good idea."), but "The Silence of the Lambs" was shown twice before officials realized it wasn't a good idea.

In two other prisons, inmate viewers have solved "America's Most Wanted" mysteries, realizing that fellow prisoners were the guilty parties in other crimes...

Tom Bryant, Nashville, TN:

Guess I should have seen this one myself, as it involves my employer! From the August 6 *Nashville Banner*, "Special report to focus on election". This article details WSMV (4)'s decision to broadcast a 1-hour election special (for the Aug. 6 primary) on WXMT (30). Executive

producer Caren Connelly says "Realistically, we couldn't preempt the Olympics for an hour. This way we can give viewers the Olympics and election coverage." During the Olympics, NBC affiliates received time for their late local news one hour late, at 11pm Central time.

The election coverage was produced at WSMV's studios, and sent by Ku-band satellite to WXMT's facilities in downtown Nashville 6km away. Obstructions prevented the installation of a temporary microwave link. WKRN (2) and WTVF (5) reported on the primary within their regular 10pm newscasts.

A 9pm nightly newscast, also produced at the WSMV studios, will begin airing on WXMT about the time you get this VUD. WSMV anchors & reporters will be used; I don't know whether graphics identifying with WSMV will appear. (seems most TV DXers east of the Mississippi have already logged WXMT anyway!)

Ron Wing, Wichita, KS:

"My VCR caught the first transmission of K55FS today. (Sept. 2) There were color bars and a caption near the top of the screen that said: REDUCED PWR TEST KFS-TV 55 WICHITA". "Neither channel 55 nor 51 was on the air by 6pm, when I got home."

Two weeks later, Ron sent a clipping indicating that programming on K55FS should have begun on September 14. He says he hasn't seen anything from them except for the tests caught by his VCR.

W.R. McIntosh, Granada Hills, CA:

Yikes, a Californian! Don't see much from out there..

From the September 1 *L.A. Times*, an article about "KSFV", channel 24 in the San Fernando Valley. KSFV broadcasts foreign-language news from more than 45 countries, 24 hours a day. 40 languages are used, with some programs arriving live via satellite, others by videotape.

KSFV's main competition is KSCI (18) San Bernardino, a full-power station which also carries foreign-language programs, but not all news. Owners Venture Technologies hope to start two similar stations in Los Angeles proper and the Inland Empire (San Bernardino/Riverside area) by the end of the year.

"KSFV" is apparently an LPTV; there's a reference in the article to an ERP of only 50kW, and a full-power channel 24 in the LA area would not be allocated with full power KVCR-TV (24) in operation in San Bernardino. (indeed, I'm rather surprised that a LPTV was authorized on 24!)

John Combs, Orlando, FL:

From the July 27-August 2 *Central Florida Business*, an article about W21AU Orlando. The station will cover most of Orlando proper, an area with 130,000 non-cable homes. A half-hour program costs between \$100 and \$300, with 30-second spots between \$30 and \$100. When not carrying locally-produced programs, W21AU will air the All News Channel from Minneapolis. (John comments that as of when he sent the clipping, in early September, he hadn't seen anything on W21AU except All News Channel.)

Also received from John was part of a hurricane special in the Sept. 2 *Miami Herald*, which was interesting enough in itself! But the main reason John sent it was because of a two-page ad taken out by WCIX (6), headlined "We Temporarily Lost The Power to Broadcast. But We Never Lost The Power to Help."

"Among the wreckage was the Channel 6 transmission tower, which collapsed due to winds in excess of 160mph. Fortunately, within hours, we were able to restore transmission to cable systems in Broward and to low power Channel 27." (translator W27AQ Ft. Lauderdale)

"Now, Channel 6 is back on the air, in most areas of Dade and Broward Counties. We ask all Dade and Broward residents to check both their cabled and non-cabled television sets for Channel 6 reception." My understanding is that a temporary antenna at 20kW ERP has been installed on the WTVJ (4) tower north of Miami. Because of the proximity to WCPX (6) Orlando, WCIX will probably have to rebuild near or at their old site in Homestead, the hardest-hit area.

John says "I noted WFLX-29 simulcasting WPEC-12 coverage of Andrew. WBFS-33 ran a slide all night that they would not show programming until after the hurricane was over, and urging viewers to tune to radio for info. (one of the few times you'll ever see a TV station actually

encouraging people to listen to the radio, hi...)

It's also been reported that a hastily-arranged telethon to raise money for hurricane relief raised over \$2,000,000, and aired not only on most South Florida TV stations, but on stations elsewhere in the state, and on WABM (68) Birmingham, Ala..

WPLG (10)'s studio-transmitter link was wiped out, taking the station off the air for 3 hours until a news microwave van could take over; and WSVN (7) and WTVJ (4) had to evacuate threatened studios and operate from makeshift facilities for several hours. No other TV stations were seriously affected by the hurricane, though 4 FM stations on WCIX's tower were also knocked off. As for Hurricane Iniki, there are no TV stations on Kauai, though it seems likely that the seven translators there were knocked off.

Marv Schutz:

(I think! Someone gave me this one at the convention, I sure hope I remember properly!)

The Sept. 9 *Wall Street Journal* covers an interesting aspect of HDTV testing; selection of "guinea pigs" to evaluate and compare the various systems.

"While experts often pick out the tiniest flaws in a television picture, the average viewer tends to be more forgiving. The idea is to make a trade-off that the average viewer won't care about, or won't see at all."

The Canadian government's Advanced Television Evaluation Laboratory in Kanata, Ontario (near Ottawa) is selecting people to evaluate the various HDTV systems being tested in the USA. Most are students from nearby Carleton University. Those who pass three eyesight tests are paid \$16 Canadian for each hour of evaluation. Test director Paul Hearty has already brought through 2,200 volunteers, and expects to use another 300. No one is allowed to watch more than one system, out of the fear that they might notice something they missed the first time, skewing the results.

\$4,600,000 has been spent on the lab, with 60% of that Canadian government funds.

Also in this paper, news that ABC plans a one-hour late-night show called "Nitecap". Beginning

October 19, and co-hosted by Robin Leach and a female anchor not yet announced, the program will attempt to directly market merchandise & coupons from major catalog firms such as Sears and J.C. Penney.

And, a note that TV advertising revenues increased 2.5% in the second quarter of 1992.

Steve West, metro Philadelphia:

Steve called just before deadline to ask whether I got in on the big tropo during the convention. (kinda. Shattered my FM tropo DX record-- but was in my car & 15 miles too far north to count it!)

He also mentions that WNJS-23 has dropped considerably in signal strength. I don't show any record of them applying for a power or antenna decrease, my suspicion is either that a technical failure has forced a power cut or, as Steve speculates, it has something to do with the NJN budget cuts.

Steve is also seeing the All News Channel on WYOU (22) late at night (WTVF (5) here also runs it overnight, instead of the CBS overnight program), and wonders whether the mystery ANC on channel 24 might actually be a full-power station-- possibly WTAT Charleston, S.C.? Either that or WJET Erie, though I suppose it's pretty hard to get a UHF signal across the mountains!

Bill Nienajadly, Clifton, NJ:

As always, Bill sends a stack of clippings!

From the August 28 *NY Daily News*, details of NYC stations' coverage of Hurricane Andrew. Ratings of news programs skyrocketed in major markets.

CBS sent a "relief mission" of about 24 employees, including carpenters & electricians, and truckloads of building supplies, to help repair the homes of 40 CBS-owned WCIX (6) employees whose homes were damaged by the storm. Some of these employees have been sleeping at the WCIX studios. Also sent were writers & producers who could relieve WCIX employees, allowing them to take care of their homes. Finally, WCBS (2)'s satellite truck was sent to Miami to beam WCIX's signal to area cable systems until they could return to the air on channel 6.

Sept. 4 *Post*: "Channel Nine (an Australian network) initially said 'technical faults' caused it to stop 'Australia's Naughtiest Home Video Special' 30 minutes into the hour-long show and replace it with the American sitcom 'Cheers'". "The show was a compilation of amateur videos that viewers said depicted semi-nude scenes, a distant view of a couple making love, and shots of animals mating." The network later admitted a flood of viewer complaints was the real reason for the sudden change of heart..

Finally, from the August 31 *Daily News*, WMGW (41) Macon, Ga. announced that its only news program, "Live at Five", is being cancelled due to low ratings. Their 11pm news was cancelled 3 years ago for the same reason.

Bill also comments that "WEXP", the experimental HDTV station on channels 27 and 28 in Hoboken, is off. "They might go back on - I hope not." Bill also notes WGTW-48 on the air. He also notices a weak signal-- weaker than WYBE-35 Philadelphia. "I don't give much hope of WGTW succeeding."

FCC RULES PRIMER: POLITICAL BROADCASTS

While not strictly related to DX, there's been a fair amount of controversy over political advertising this year. Congressional candidates in some districts (including one near Nashville) have aired commercials purporting to show aborted fetuses. And stations have been fined for not offering candidates special discounts normally reserved for long-time advertisers. The political advertising rules are part 73.1940.

A "legally qualified candidate" is anyone who has announced to the public their intention to run for nomination or office; who is qualified under local, state, or federal law to hold the office they're running for; and who is either on the ballot, or has committed to a write-in campaign and has made a substantial showing that they're a bona-fide candidate.

73.1940(b): For 45 days prior to a primary election, or 60 days prior to a general or special election, the rates charged for political ads may not exceed the lowest unit rate for the same class & amount of air time. Earlier, the rate charged may be no more than

that charged to a commercial advertiser, and any discounts offered to commercial advertisers must also be available to political candidates. Recently, this has been interpreted to mean that if a station offers a commercial advertiser any discount (for example, a 20% discount for advertisers buying 5 30-second spots a day for 6 months), they must offer the same discount to politicians, even if they don't buy 6 months worth of spots.

73.1940(c): No discrimination is permitted between candidates in practices, regulations, facilities, or services, nor may any preference, prejudice, or disadvantage be given. Stations cannot enter into contracts with one candidate which excludes the advertising of other candidates for the same office.

73.1940(g): No station is required to permit the use of its facilities by political candidates, but if a station does permit such use, it must offer equal opportunities to all candidates for that office. Licensees have no power of censorship over the material broadcast by a candidate. Appearance by candidates in bona-fide news programs doesn't count.

This section is backed by the Communications Act of 1934, an act of Congress which the FCC can't amend on its own. It's why, for example, the "aborted fetus" ads air aired-- I know of no station which wanted to air those ads, but this regulation specifically requires them to do so. Indeed, a political candidate could conceivably appear on camera naked, and stations would not be permitted to censor him, though it'd be a sure way to lose the election! Some people have requested that the FCC rule the commercials in question "indecent", prohibiting them from the airwaves except between midnight and 6am, but the Commission has refused to do so-- in any case, which conflicting federal law would take precedence?!

Well, I've already missed one big tropo-- but weather patterns seem to bode well for a good tropo season this fall. After the abysmal Es season, we deserve it...

73 Doug

Contributions earnestly solicited!

WZWA: Is it for Real? Column's Swan Song Announced

A Nashville FMystery on 99.3 has been solved. "It was indeed W257AR [Donelson TN], set up to relay WAMB-1. WAMB-1 leaves their exciter turned on and modulation fed to it when the power amp is off for the day," says Doug Smith. "There's enough leakage from the exciter that the translator was able to pick it up and relay it," and now that translator has embraced Christianity and is relaying WAYM *88.7 Columbia TN instead of WQZQ-FM 102.5 Dickson TN. Hurricane Andrew took down the tower of WCIX-6 in Homestead FL and FM stations WXDJ 95.7, WRTO 98.3, WMCU 89.7 and WDNA 88.9; although WDNA was already off the air for unknown reasons. Channel 6 has rejoined the airwaves at a lower height, along with its Spanish SAP at 78.67 kHz, but fate of the FMs unknown. Two people called from SE FL the morning I am typing this and I forget to ask about the FMs. Doug also mentions WMUF-FM 94.1 Paris TN as having recently embraced stereo. The "WKNO Stations" is a nonID shared by W/KNA *88.9 Senatobia MS, WKNP *90.1 Jackson TN, and WKNO-FM *91.1 Memphis.

Gus Mancuso reports on his experience tuning in a station, which may or may not have been WZWA Clarksburg WV, which the FCC has deleted: "Don't remember [hearing an] ID, but I have down that I got [it] two times--from mountain and from valley. Vaguely recall getting one station with strange IDs, don't remember what, but remember it was unusual." Well, that's not exactly convincing evidence that WZWA exists. Anyone else want to venture to WV and try out 90.1? Gus is not sure if WRRL-FM 95.3 Rainelle or WOTR 96.3 Lost Creek WV has stereo. WRRL-FM has always been a monophonic blight on the FM dial, and no other human being has been known to tune in WOTR.

Chester Royster answers my question in the Aug. VUD about directional couplers. The part # is 9300-8 and it costs \$2.50, an 8 db directional coupler from Microwave Filter, 6743 Kinne St. East Syracuse NY 13057. "Rich, Earl or any of the other technicians [in the WTFDA] can explain the coupler's benefits such as 1) no loss on your main antenna and 2) the prevention of down-phasing. I used one with superb results when my antennawere spaced around 50' apart. Later I horizontally stacked two FM 13s and eventually made a quad. It appears that the regular 75-ohm splitter/combiner gave the best results in both situations." Microwave Filter Co. has since sent me their eight page brochure. See below for a comparison of one of their products with Andy Bolin's.

New calls for Waterbury CT 104.1 are WYSR, "Star 104.1," says Mike Bugaj. No format change; they're trying to wean DX listeners away from WZMX 93.7. "Also, I think that someone is giving you the wrong info on WLNQ-FM 92.1. I have been checking them out for days now and my stereo LED has yet to come on. They are not stereo. I would guess that somebody heard WRNQ-92.1 from the Poughkeepsie area and thought they had Sag Harbor."

You'll have to grope around without benefit of a program guide as you DX *90.1 WOI-FM Ames. Lack of funds has brought about the demise of that publication, after the Sept., 1992 issue, as Robert Baker reported. It was costing them \$20,000 to keep that publication afloat.

The new G-E Superadio III is in (apologies to Saul Chernos!), and I have four in stock as of this writing, selling unmodified for \$50 plus \$4.50 shipping. Stewart West says it is in the new Best catalog at \$39.98 (list price \$49.95). "I'm sure other discounters will have this radio," John Ebeling and I as well as George Sherman compared the new model with the old. It seems about the same on FM, but AM sensitivity is poorer on the new model. It lacks the many-ganged tuning condenser the old set had and the dial is more crowded, the right half of it. I think to compensate for poorer AM sensitivity G-E included an AM "wide-narrow" switch. The new radio appears to be extremely difficult to change the IF filter, unlike the old 7-2885 model. I will not put replacement IF filters in the new model, but will offer the SCS modification at the same price as for the older model. I took two of them to the NRConvention in Omaha and they both sold, as well as a bunch of FM Atlases--after a little talk on FM DXing Saturday night. Ken Chatterton--whose name appears on an old WTFDA membership list--was there, as was Frank Merrill and perhaps other WTFDA folk. I have not seen a WTFDA membership list in about two years; it used to appear every January. I hope Bill can oblige this year! As I was driving north from Lincoln, KWPN-FM 107.9 West Point NE had a definite spur on 107.5, not sure if it was a transmitter anomaly or an unlisted translator.

Greg Coniglio came back from eastern NC and found WHOV Hampton on 88.1, having moved from 88.3. WKJA Belhaven--no sign of it on 101.1, and probably not on 92.1, from which it was supposed to move. WKJE 104.9 Hertford NC not yet DX ready, and WTKF 107.3 Atlantic NC, with its news and talk format, suffers from the disease of being monophonic. It looks like W280CR 103.9 Kitty Hawk is a goner, and they wouldn't dare intrude on 102.3 because nearby WERX 102.5 is so strong. W214AL *91.7 with WJAZ Summerdale PA is a reality [York PA], and CKEY 101.1 Fort Erie now daring to say "Key FM 101.1" at times. It's WNUUC, call letters probably inspired from Greenland, that hold forth on 107.7 in the Buffalo area with K, displacing WEZQ. "Keep up the great work!" admonishes Greg, who does a fine column in the VUD.

It's stereo for sure for WCLS 100.7 Oscoda, which gets out fine in MI's "Thumb" region, says Karl Zuk. W. R. McIntosh sent a clipping about recent format changes on 103.9, 103.1 and 98.7 in L.A. They are all trying to attract 25-54 year old DXers, with Newport Beach 103.1 now KAJZ and Santa Monica KBJZ, sans "Mars FM." And KKLA 99.5 does have beautiful stereo music, especially at night, in spite of its religious talk format most other times. Besides having stereo on the main carrier, KKLA has a gospel music format at 67 kHz SCS,

but in a foreign language.

Dave Sinclair sent a CRTC announcement about the need for a Toronto radio market study to determine who should be awarded the 99.1 frequency left vacant after the folding of the CKO pseudo-stereo news network. "I read with interest your comments in the August VUD about height comparisons with FM. Very interesting differences!" There was a good article about FM DX in the May Popular Communications, "Listening for FM DX," by Ransom Stoddard, and it mentions the WTFDA, as well as my "FM Atlas and Station Guide."

"Remember how I got you started with SCA?" asks John Ebeling. "Back in 1961 or so, I gave you my first adapter built on a copper plate hi-voltage cage cover from a Motorola TV set. I had just completed a more complex adapter. Look what that gift led to! . . . Notice Muzak no longer has any appreciable pause between selections. KSTP-FM now keeps the carrier on all the time--no need for a mute circuit. I do not even recognize any Muzak selections any more--nothing is even familiar. Twenty years ago I liked to listen to them. Years ago, you could set your watch by their pauses; music would start at the hour and each 15 minutes thereafter." And he notes KRGR



Albert Lea MN still on 95.3, not yet on 94.9. I stopped by and talked with them, and they have yet to move--having problems with zoning and possibly from competitors who would rather they stay a Class A. They were hopeful, saying maybe the next week they could break out the champagne. John goes on: "I'm confused about your statements in the August VUD re FMedia! You mention a special six month subscription and in another area mention you may quit the publication. What gives?" [First, I thank John for leading me to the SCS well and helping me to draw so much satisfaction and money from it as I have lead over 5000 folks to try that brand of DX listening; I just bought a Heathkit AR15 tuner/amplifier from him that I plan to put SCS into; it had been used for DXing until replaced by a Penncrest receiver. About my plans for this column--well, read on.]

"I am rather shocked that you would even consider giving up your contribution to the VUD, though I can sort of understand that FMedia! 'competes' with the VUD/visa versa," says Bill Nienajadly. "All of us hardcore, dedicated FM DXers would be pretty much left out, even though many of us have bought, and will buy the many items that you have offered for sale in the past and in the future. We were there all the time for you and you are there for us. FMedia! is an excellent, well-read newsletter, but one of the reasons why I have not subscribed is because three other nearby DXers already subscribe to it and inform me of new stations coming on the air. FMedia! seems more geared to the commercial market/the 'industry' than just for FM DXing per se, even though the info on stations and station grants appear in both. One section of your VUD 'FCC News' that I really appreciate is the 'See Also' section. Here is where you spotlight DXers' catches for certain changes in format, Stereo status, slogans, etc, and this was not in FMedia! since it is geared toward the 'industry'. If you drop your very valuable FCC News, this section would likely be history. Another part of your FCC News in the VUD is the various comments we DXers contribute. Often, very often we

learn more from reading this part of the VUD than even the DX reports themselves! Through the comment section, we first learned about phasing and quite a few other items that have helped our DXing dramatically! Now if you add a DXing section to FMedia! like you do with FCC News in the VUD, along with member and nonmember comments then I could understand you dropping the VUD, as long as the comments and 'See Also' were then added to FMedia! It is scary to think what would of happened if you decided to drop out of the VUD three years ago! None of us would have known about phasing, feedback on selectivity modification and your witty inputs. Face it, Bruce, we owe a lot of our DX catches to you, if you really think about it! All I'm asking is please don't give up your FCC News column in the VUD. We owe a lot to you. Please reconsider!"

Regarding phasing, Bill says: "It is possible to DX without a phasebox to get DX in the same direction as a farther station and last week we had a sunrise opening to Boston . . . 93.7 Lawrence MA and 92.5 Haverhill MA Loth overrode 93.7 Hartford and 92.5 Waterbury, this even without phasing. I know for sure, because I disconnected one antenna from the phase box and, yep, they were still there. . . Yes it does happen, but at least here it's not very common at all. If you look at my recent DX to NC back in May of this year you will see that if it weren't for phasing a lot of stations simply would not have been heard. Here in the very crowded Northeast phasing has become a necessity, not a luxury. . . I doubt you would want to spend \$545 on Microwave Filter's overpriced junk. They use only ONE phasing adjustment, the other adjustment is an attenuator. In contrast, Bolin's Box uses TWO capacitors/aka two phasing adjustments. If you have Bolin's flyer on the phasebox, you'll see that he offers a two-week money-back guarantee if it doesn't work out. Personally, for what he is selling it for, it is a lot cheaper than a new tuner or practically anything else. Again, here in the Northeast the phase-box is a godsend, the way all those new stations are coming on--the phase box is as important as a yagi!" Bill also corrects on WLNQ-FM not having stereo, but they are stronger, now with their new 6 kw power. "On page 9, Aug. column 1 'Format Changes (Selected)' you list FL New Port Richey WLPJ *91.5. How can this be when 89.3 Monroe NY is also WLPJ? A massive FCC mistake?" [I show Monroe NY as WLPJ--E.e.] "Also on p. 9 Aug. VUD column 3 CServices PA Philadelphia WYDB 96.5, this individual cannot get WYDB except when WQXR-FM is off? Maybe you could sell her a selective tuner so she can get WYDB even with WQXR-FM on the air. I have no problem at all . . . despite WQXR-FM at only 20 km. As Gus Mancuso once said, 'Bless those filters!' Well, that is it from here, and again, please don't give up your FCC News in the VUD. Believe me, it is FAR more valuable than you might think!" [Blush--I am sure others could handle it; you might see the feature "Station News" expand. I've had the column so many years now (anybody know for sure?) that it's time to give someone else a chance. My time is so limited that something has to go--this column or FMedia! Anyway, I plan to do this column though December--E.e.] Articles Bill sent include WBLS 107.5 attacking the ratings services for poor portage among Lack DXers of their audiences; WNEV AM being sold to businessman Michael Bloomberg, who hates music but will cram the 1130 airwaves with business news; Infinity Broadcasting poised

WESTERN TV-DX

October 1992

The only DX of note reported in August was tropo. A fine super tropo developed in the Midwest in the August 8-10 period. Another super tropo opening occurred from Illinois to New York/Pennsylvania on the 21st. California's Central Valley saw tropo on the 1st.

New ___ New Mode __ Tent. - t Unidentified - unid S/On - + S/off - =
 ID Color Bars - @ Unid Color Bars - % Misc. Test Patterns - &
 Parallel Programming - // Scrambled - # MTS Stereo - \$

NL Nuevo Leon

A&E Arts & Entertainment SHO Showtime
 ANC All News Channel TBN Trinity Broadcasting
 CBN Family Channel TBS TBS SuperStation
 CHA Channel America TNN The Nashville Network
 CNN Cable News Network USA USA Network
 HSS Home Shopping Spree VJN Jukebox Network
 LIF Lifetime VVN Valuevision Network
 MSC Midwest Sports Channel WCH Weather Channel
 NOR CBC North

Robert Kramer, Box 8244, Chicago IL 60680 (N9MBK) (312-262-6299) CDT

Equipment: See August 1992 Western TV-DX.

June 1992	29 tr 2339 WNWO 24 OH 220	7 tr 0423 WTLW 44 OH 200
17 Es 1759 WEDU 3 FL 1002	31 tr 2058 WBSX 31 MI 205	0438 WGTU 29 MI 225
WEAR 3 FL 785	2059 WCMV 27 MI 206	0440 WUAB 43 OH 293
	WGKI 33 MI 206	0504 WTOL 11 OH 220
July 1992	2327 WFUM 28 MI 224	0508 WADL 38 MI 240
2 tr 2106 WUSI 16 IL 219	2334 WTVS 56 MI 240	(Audio o/WCFC)
2119 W39BH 39 IL 129	(Thru WYIN-56)	0527 W48-- 48 ??
(Champaign HSS)	2342 WNWO 24 OH 220	(Unknown Religion)
2128 W68AA 68 IL 122	WUPW 36 OH 220	(See Note # 2)
(Danville WAND-17)	2353 WJRT 12 MI 224	0531 W69BJ 69 MI 174
2240 WCFN 49 IL 180		0541 WEYI 25 MI 222
6 tr 0740 WQPT 24 IL 145	August 1992	WNWO 24 OH 220
7 tr 0706 WCMU 14 MI 200	1 tr 0703 WCMU 14 MI 200	0542 WBGU 27 OH 200
WBGU 27 OH 200	2 tr 2208 WGKI 33 MI 206	WGTE 30 OH 220
0753 WTVS 56 MI 240	2310 W69BJ 69 MI 174	0544 CBLN 40 ON 338
WGPR 62 MI 240	2312 WBSX 31 MI 205	0637 WUPW 36 OH 220
WBSX 31 MI 205	3 tr 0220 WXON 20 MI 240	0646 WCMU 14 MI 200
0822 WRGT 45 OH 237	WADL 38 MI 240	0706 WFUM 28 MI 222
Es 1018 WEDU 3 FL 1002	0650 WCMU 14 MI 200	0756 CBLN4 45 ON 349
1045 WTVY 4 AL 727	2234 W33AR 33 IL 75	8 tr 2250 KIIN 12 IA 203
1508 KIII 3 TX 1116	(Rockford WCIU-26)	2317 KPTM 42 NE 438
1725 KGBT 4 TX 1226	5 tr 2344 W33AX 33 WI 121	2345 KSHB 41 MO 424
1820 KATC 3 LA 840	(Madison TBN)	2352 KOZK 21 MO 440
9 tr 1808 WKOW 19 WI 230	7 tr 0005 W34AY 34 IL 129	9 tr 0011 KCPD 19 MO 424
WHLA 31 WI 230	(Champaign TBN)	0027 KSPR 33 MO 440
18 tr 0301 WXON 20 MI 240	0044 W40AN 40 MI 288	0133 KTVO 3 MO 225
0757 WCMU 14 MI 200	(Esanaba WLUK-11)	0320 KCCI 8 IA 315
2155 WBSX 31 MI 205	0351 WXON 20 MI 240	0321 KNLJ 25 MO 335
2207 WBGU 27 OH 200	WGKI 33 MI 206	0323 KARE 11 MN 360
27 tr 0650 WBGU 27 OH 200	0357 W48-- 48 ??	0327 KXLI 41 MN 414
WBSX 31 MI 205	(Unknown VJN)	0336 KIIN 29 MN 360
WFUM 28 MI 224	(See Note # 1)	0345 KSAX 42 MN 475
WAQP 49 MI 222	0416 CKCO3 42 ON 260	0350 KRWF 43 MN 419
WTVS 56 MI 240	0421 WAQP 49 MI 222	(See Note # 3)
0700 W69BJ 69 MI 174	WTVS 56 MI 240	0409 KLG7 23 MN 360
(Lansing WAQP-49)	0422 W59CA 59 MI 173	W33AX 33 WI 121
28 Es 2100 KENW 3 NM 1004	(Jackson WAQP-49)	0428 K19BG 19 MN 414
29 tr 2332 WBGU 27 OH 200	0423 WGPR 62 MI 240	(St. Cloud TBN)

Western TV-DX

October 1992

Robert Kramer (continued)

9 tr 0428 K15-- 15 ??	9 tr 0633 KYIN 24 IA 307	10 tr 0420 W39BH 39 IL 129
(Unknown TBN)	0635 KTIN 21 IA 335	0452 WFIE 14 IN 267
(See Note # 4)	0646 WHLA 31 WI 230	0501 WEHT 25 IN 267
0433 K27CK 27 MN 434	2200 KIIN 12 IA 203	0502 WEVV 44 IN 267
(Willmar TBN)	10 tr 0215 KNLC 24 MO 265	1825 WELI 25 MI 222
0437 K26CL 26 MN 480	0303 KDNL 30 MO 265	WAQP 49 MI 222
(Alexandria WCH)	0311 W24AW 24 IN 45	2003 WXON 20 MI 240
0542 KTTM 12 SD 560	(Valparaiso ANC)	2004 WBSX 31 MI 205
0550 KIMT 3 IA 307	0404 W33AY 33 IL 180	2005 WTVS 56 MI 240
0553 KTTC 10 MN 292	(Springfield HSS)	(Over WYIN-56)
0605 KVRN 15 ND 572	0406 K21OD 21 MO 265	2052 W69BT 69 IN 76
0617 WLAX 25 WI 230	(St. Louis HSS)	(South Bend WICU-26)
0619 WXOW 19 WI 230	0407 W34AY 34 IL 129	2205 WNWO 24 OH 240
0623 K43-- 43 ??	0410 K18BT 18 MO 265	11 tr 0655 KSHB 41 MO 424
(See Note # 5)	(St. Louis TBN)	
	0413 WHSL 46 IL 264	

Note # 1 - VJN with no promos, just the video list. ID as "Power 98" (48? fm), possibly W48AP?

Note # 2 - Family Channel - antenna bearing north of the VJN, probably in the Detroit area. (W48AV? fm).

Note # 3 - No video, just audio all night. Occasionally a scrambled video signal, but usually just black.

Note # 4 - TBN in with the same signal strength and at the same time as K19BG and in the same direction. (No channel 15 TBNs are known in Minnesota. However, the Family Channel affiliate at Appleton, K15DC, carries religious programming at that time. fm).

Note # 5 - Translator with KVRN 3/4 color bars. Distorted signal, with video moving horizontally across the screen. Bearing towards southern Minnesota or northern Iowa. (I think you were probably watching KRWF. As any DXer who has seen this one during tropo can attest, it is usually a mess. I have never seen a full service station with more problems and it has been going on since it came on the air. The distorted video is being broadcast by KRWF, and in my experience, usually involves KMEG-14 video. How it happens is still unknown to me. In his report this month, Jeff Kadet surmises that KRWF must get its signal via K14AD. I personally don't think KSTP would go that route to feed a full service station. Also, the signal which I frequently see KRWF broadcasting does not look at all like the co-channel interference which we are all familiar with. The interference varies sharply, like a fast switch, leading me to believe it is interference to their FM microwave feed. However, I have no personal experience to confirm this. fm)

The opening on August 9th was one of the best I've ever seen. The Minneapolis area was the strongest I've ever seen.

My antenna system suffered some minor storm damage on July 2nd. Winds of nearly 100 miles per hour zipped through the area, bending my mast (which is a water pipe) to about 10 o'clock. The antennas still work fine. They just look a little weird.

I am currently working with the technical director of the Chicago Amateur Radio Club to create and design an extremely high gain amplified system that will have no overload. It however, won't be as compact as present commercial amplifiers. I will probably have more on this at my next report. 73.

John Jefferson, 4104 Spyglass Ct., Antioch CA 94509 (415-778-8727) PDT

Equipment: See August 1992 Western TV-DX.

After a promising May, June & July were dismal. August 5 may have been the best day of the season, but alas I was at work during that opening. Somewhat compensating for the lack of skip was a several-day spell of exceptional tropo up & down the Central Valley which provided 5 new loggings. Underlined are new.

July 1992	August 1992
7 Es 0709 KOUS 4 MT 905	29 tr 2130 K34DE 34 CA 185
2129 KNOP 2 NE 1110	(Redding LPTV)
9 Es 0659 KMID 2 TX 1175	2330 K67DY 67 CA 121
17 tr 2330 K52AJ 52 CA 100	(Chico CHA)
(Lakeport KCSO-19)	
(See Note)	
1 tr 0138 -K49CI 49 CA 124	(Paradise KHSL-12)
0236 K14HX 14 CA 200	(Lakehead KIXE- 9)
2 gw 2258 K08LC 8 CA 45	(Sacramento KICU-36)

John Jefferson (continued)

Note - ID as KCSO-19/KREN-27. Previously translated KSTS-48.

Here's the MUF breakdown to date:

DATE	MUF	TIME	DATE	MUF	TIME	DATE	MUF	TIME	DATE	MUF	TIME
6/25	---	7/ 4	---	7/13	---	7/22	---	7/31	---		
6/26	2	2112	7/ 5	---	7/14	2	0706	7/23	---	8/ 1	101.3 1655
6/27	---	7/ 6	99.5	1207	7/15	2	0807	7/24	---	8/ 2	---
6/28	---	7/ 7	97.1	0726	7/16	98.7	1846	7/25	---	8/ 3	---
6/29	---	7/ 8	94.9	1953	7/17	---	---	7/26	---	8/ 4	---
6/30	2	2131	7/ 9	5 0918	7/18	2	1212	7/27	---	*8/ 5	5 1938
7/ 1	---	7/10	4	2030	7/19	5	0749	7/28	---	8/ 6	---
7/ 2	---	7/11	2	1720	7/20	98.7	2005	7/29	---	*8/ 7	---
7/ 3	---	7/12	4	0930	7/21	97.5	1623	7/30	2	1925	8/ 8 88.3 0957

* On 8/5 around 1700 Eric Sundius had skip to 107.7, but I was at work until 1930. From early May thru 7/24 I averaged 2 days work a week, but started a new job 7/27 & now am extremely busy again. So the big day of the season happens in August! And on 8/7 Eric had skip to 100.1 while I was again working. Groan!

Jeff Kruszka, 2824-E Steamship Circle, Harahan LA 70123 (504-733-8539) CDT

Equipment:

Sylvania 12" black and white, quad loop cut for channel 2, Radio Shack U-75 corner yagi. Mitsubishi HS-U31 VCR.

August 1992

1 Es 1059 KYW 3 PA 1092 1 Es 1134 WMAR 2 MD 1003 1 Es 1145 WFSB 3 CT 1264

Excluding an exceptional tropo opening in July, I have one word for this season - Pathetic!

Jeff Kadet, Box 20, Macomb IL 61455 (W3CRH) (309-833-1809) CDT

Equipment: See August 1992 Western TV-DX.

July 1992	Es	TIME	STATION	TIME	STATION	TIME	STATION	TIME	STATION	TIME	STATION	
4 Es 1115	XEFB	2 NL	1162	18 Es 2115	CKND2	2 MB	818	3 tr 0305	KARD	14 LA	583	
1700	WESH	2 FL	956	21 Es 1330	WTKR	3 VA	806		#K61EU	61 MN	254	
	WPBT	2 FL	1165	25 Es 0830	KKTO	2 NM	918		(Austin	TNN)		
1830	unid ch 2	Mexico			KPRC	2 TX	799		#K55FJ	55 MN	254	
	unid ch 4	Mexico		0930	KENW	3 NM	858		(Austin	CNN)		
	unid ch 3	Mexico			unid ch 2	Mexico			#K49DB	49 MN	254	
6 Es 1029	CKCK	2 SK	959	27 tr 0240	K35CF	35 IA	179		(Austin	TBS)		
	CFQC1	3 SK	1149		(Des Moines	TBN)			Austin 45, 51,			
	&CBKFT2	3 SK		0245	K41DD	41 IA	179		53 and 57			
1100	WPTV	5 FL	1130		(Des Moines	HSS)		4 tr 0402	K44DO	44 MO	190	
	WUFT	5 FL	877	28 tr 0200	KARD	14 LA	583		(Osage Beach	KNLJ-25)		
	WJXT	4 FL	870		(See Note # 1)				(See Note # 2)			
	WEDU	3 FL	1054	0900	WDSI	61 TN	467		0410	KARD	14 LA	583
	WCPX	6 FL	983		WTCI	45 TN	467	5 tr 0403	KARD	14 LA	583	
	WESH	2 FL	956	Es 0900	WGBH	2 MA	1014		0449	WDSI	61 TN	467
1700	WCBS	2 NY	874	1012	WMAR	2 MD	747		0834	W46AJ	46 TN	415
9 tr 0556	#K53DI	53 MN	254	tr 1100	WVEU	69 GA	578		(Cookeville	TBN)		
	(Austin	SHO)			WGNX	46 GA	576	Es 1200	XEFB	2 NL	1162	
	#K57EU	57 MN	254		WATL	36 GA	576		unid ch 5	Mexico		
	(Austin	LIF)			WPBA	30 GA	576		unid ch 6	Mexico		
	#K51CY	51 MN	254	29 tr 0355	W38BK	38 IN	245		(Both //)			
	(Austin	USA)			(Evansville	TBN)			unid channel 2			
	1014	#K45DF	45 MN	Es 0525	CBGAT14	2 PQ1408			1225	KMOL	4 TX	883
	(Austin	CBN)						6 tr 0312	KARD	14 LA	583	
	2034	W54AP	54 IL	August 1992				7 tr 0312	KARD	14 LA	583	
	(Blue Island Catholic)			2 tr 0317	W24AW	24 IN	200	8 tr 0405	KARD	14 LA	583	
18 Es 1130	unid ch 2	Mexico			(Valparaiso	ANC)			(See Note # 3)			
	KIII	3 TX	968		KARD	14 LA	583		2135	#K34DB	34 MN	355
									(Redwood Falls	MSC)		

Jeff Kadet (continued)

8 tr 2135	St. James MN 21,	9 tr 0104	#K31BT 31 MN 425	21 tr 0255	WGBS 57 PA 814
	32,38,40,42,44,		(Appleton CNN)		unid ch 48- east
	46,48,50,52,54		0207 #K15DC 15 MN 425		WTGIt 61(NJ)
	320		(Appleton CBN)		(0 kHz - WQHS)
	W62BD 62 MN 340		(w/TBN program)	0330	WHP5 65 NJ 838
	(Minneapolis VVN)		0226 unid ch 19 MN		CITY 57 ON 620
	Austin 45,49,51,		(See Note # 6)		CFMT 47 ON 620
	53,55,57,59,61		0231 K18DG 18 MN 445		W44AG 44 PA 562
2215	K35CY 35 MN 340		(Alexandria NOS)		(Erie TBN)
	(Minneapolis HSS)		0240 #K39CJ 39 MN 490		0410 WXTVt 41- (NY)
2224	#K61AU 61 MN 390		(Erhard WGN-9)		0425 unid 64 // WOAC
	(Granite Falls WCCO- 4)		0250 K45AR 45 MN 450		(See Note # 7)
	K68BJ 68 MN 355		(Eagle Bend LPTV)	0430	CIC059 59 ON 466
	(Redwood Falls KARE-11)		(Bulletin/rr mx)		WUHT 31 NY
	K67AN 67 MN 390		0258 K34DG 34 MN 395		(0 kHz - WBSX)
	(Granite Falls KRWF-43)		(Willmar NOR)	0517	WVIA 44 PA 775
2300	#K59BE 59 MN 390		0301 #K56BZ 56 MN 425		0521 CBLN 64 ON 455
	(Granite Falls KARE-11)		(Appleton KARE-11)		CB1FT8 61 ON 558
2324	K57CN 57 MN 280		unid 57 KARE-11		W64AK 64 OH 550
	(Wabasha KSTP- 5)		0316 #K18DI 18 MN 390		(Conneaut WVIZ-25)
	K46CB 46 SD 375		(Granite Falls CBN)	0540	WETG 66 PA 562
	(Sioux Falls KDLT- 5)		(w/TBN program)		@MQLN 54 PA 562
9 tr 0000	#K22DO 22 MN 390		(Willmar KMSP- 9)		@WNEI 17 NY 632
	(Granite Falls TNN)		unid ch 58 MN	22 tr 0440	K14AD 14 MN 395
	(See Note # 4)		(Wadena KSAX-42)		(Willmar KSAX-42)
0030	K66DN 66 MN 395		0340 had to leave	0524	unid 16 MN
	(Willmar WCH)	21 tr 0200	W29BG 29 IL 100		(See Note # 8)
	K36AA 36 MN 445		(Decatur TBN)	0530	#K19CV 19 MN 355
	(Alexandria KARE-11)		0227 WSYT 68 NY 765		(Redwood Falls CBN)
0050	K63DY 63 MN 420		CBLN 40 ON 511		
	(Little Falls KMSP- 9)		WHSE 68(NY) 875	September 1992	
0104	KRWF 43 MN 370		CIC018 18 ON 511	3 tr 0432	#K43DH 43 MN 254
	(See Note # 5)		@CKC03 42 ON 467		(Austin A&E)

Note # 1 - Apparently a regular on troposcatter at 583 miles. If I put the R7000 on channel 14- in FM narrow and sit on the channel, their audio will occasionally fade in above the noise level for brief moments (usually between 0300-0430 CDT) 90+% of days tried.

Note # 2 - Reverend Larry, the guy who runs KNLJ-25 and KNLC-24, was airing his own political ads. He was running in the Missouri primary for public office. Is this legal? (Sounds OK to me. Of course he has to provide the opposition equivalent spots at the same rates, if they want them. fm)

Note # 3 - Already a legendary northwest opening probably only rivaled by the one on August 18, 1983 when Fort Francis, Ontario, was blasting in on FM until the late AM, but I wasn't set up for UHF TV yet. Every clear channel had layer upon layer of weak translators and LPTVs fading in and out over each other just like the graveyard frequencies on the AM broadcast band. Unfortunately, I had to leave during the heat of it and was preoccupied before that with packing.

Note # 4 - Probably either Alexandria or Redwood Falls, both STV.

Note # 5 - Anybody trying to watch KRWF tonight would have gotten quite a headache. They must get their signal off the air from K14AD which was being demolished by same offset KMEG-14.

Note # 6 - Probably either Redwood Falls or Appleton, both STV.

Note # 7 - Assume that this is W64AK picking up WOAC-67 (usually WVIZ-25 via W67AL)???

Note # 8 - WTJR-16 was off the air for about ten days. This was a STV 0 kHz to South Bend. Probably St. James, but could be Granite Falls.

Question: Do LPTV/translators have assigned offsets. (Not that I am aware of. As I understand it, back before LPTV was invented, 1 kw translators operating on allocated channels had to comply with the offset. That may still be a requirement if an allocated channel is used. fm)

Correction from last report: the WCCL-49 New Orleans Video Jukebox logging on June 17th was actually K49CG in Little Rock, also channel 492. Jeff Kruszka wrote to say WCCL was off the air. I replied that I had logged a local ad with a Metairie, Louisiana phone

Jeff Kadet (continued) number, plus there were other mentions of Louisiana. Jeff then called the phone number to discover that it was an advertising agency in Metairie selling time on both K49CG and another LPTV in Monroe, Louisiana. Thanks, Jeff!

A week after the great Minnesota opening of August 8-9 I decided to drive up there on a translator/LPTV transmitter scavenger hunt. I wanted to try to solve some of the unIDs, get a better idea of where all these places were located (and the terrain the signals have to travel over) plus get a feel for what LPTV/translators are still up there that are needed. I had also never seen a LPTV/translator site before.

Managed to track down the sites of St. James, Redwood Falls, Granite Falls, Appleton, Alexandria, Willmar, Olivia, Eagle Bend and Winona. STV is alive and well in Minnesota. Of 85 stations visited, 37 were scrambled. Residents of Willmar get everything for free while residents of Appleton have to pay for everything. It's now easier to understand why Appleton is so hard to log from here. Of their 10 STV stations, 5 of them have no audio and 4 of them are negative video.

(The Willmar translators, and others that you visited, operate those unscrambled channels on "the honor system". You are supposed to pay if you are watching. For example, in Alexandria, the Weather Channel has a crawl on it advising viewers that their fair share is \$45.00 a year. A very reasonable charge in my opinion. fm)

Minnesota LPTV/translator stations logged here is at 79. Total LPTV/translators logged is 341. 73.

William Eckberg, 1032 Sterling Road, Dixon IL 61021

CDT

Equipment:

1966 Zenith b&w tube receiver ch 14N22, modified Zenith 175-2225 detent tuner. Rohn tower - Channel Master 1110 at 41'. Rohn crankup tower - Channel Master 7 foot dish with RDX Labs UA900 (round) preamplifier at 52' and 125' of Jerrold CAC11.

August 1992	9 tr 0200 KITM 12 SD 470	9 tr 0610 KYRR 15 ND 498
1 tr 0345 W54AP 54 IL 87	0305 K14AD 14 MN 360	0620 K45AR 45 MN 408
(Blue Island religion)	(Willmar KSAX-42)	(Eagle Bend LPTV)
3 Es 1715 WESH 2 FL 985	0315 K48AH 48 MN 360	10 tr 0150 W54BK 54 IN 120
1730 WPBT 2 FL 1229	(Willmar KMSF-9)	(Chesterton ANC)
1800 WEDU 3 FL 1031	0555 KCCO 7 MN 404	0220 WZTV 17 TN 408
9 tr 0110 KSAX 42 MN 404	KCCW 12 MN 439	

I saw Fargo channel 15 snow free in the AM of August 9th. I haven't seen a Fargo station in 30 years! It was the best tropo ever in that direction with five 5 out of a total of 8 loggings over 400 miles. I was gone several days so missed other tropo.

Fred McCormack, 2384 Teakwood Dr, Maplewood MN 55119-5520

CDT

Equipment:

General Electric 9" color (Model 09GP103). VHF: Rabbit ears. UHF: Archer Golden-U UHF Indoor Antenna (2 bow-ties).

August 1992	28 tr 0859 KHIN 36 IA 270	5 tr 0148 WFLDt 32 IL 0152 WCFCt 38 IL 0157 WCIT 26 IL
10 tr 0103 K28DF 28 MN 110	(Brainerd KMSF-9)	3 tr 0235 K43DH 43 MN 90
0729 KCCI 8 IA 215	(Austin A&E)	0226 WGBA 26 WI 250
0730 MHO 13 IA 215	0247 KDSM 17 IA 215	6 tr 2225 KPTM 42 NE 310
0859 KRIN 32 IA 190	5 tr 0108 -WMTV 15 WI 215	
15 tr 0828 W39AF 39 WI 70	0128 unid channel 16	
(Grantsburg WHWC-28)		

OWNERS PLEASE READ CAREFULLY



EASTERN TV-DX

Bill Nienajadly/N2QJJ
PO Box 2999
Clifton NJ 07015-2999
201-478-3044 no collect

October 1992

Out off 3 months

Deadline the 5th

LONG HAUL TROPO WITH SOME RARE PATH TROPO HAVE BEEN REPORTED ON AUGUST 22-24. VERY LONG HAUL TROPO OVER RARE PATHS IN MID SEPTEMBER!!! NEXT MONTH IN ETVDX- A KY TV DXER SEES CT ON UHF! AND SAME KY DXER SEES CANADA VHF's and UHF's! HISTORY MAKING TROPO IN SEPTEMBER!

As this column is being typed up in mid Sept. word has reached ETVDX about some very long haul and rare path tropo. Though some of these reports mentioned in this headline are not yet in the DX columns, by phone-your ETVDX has heard about...Ed Phelps in KY sees Philly Scranton, Binghampton and Hartford CT on UHF! On the FM side, Dxers have heard MI and New Brunswick Canada at the same time, Dxers in CT hear MI, IN and SC in the same day. A dxer in the DC area, sees MI UHF's and a NY UHF near the Canadian border. A Dxr in the Cape Cod area reported Kitchener ON and NS & NB in the same evening! Some guy from Clifton sees finally a Canadian UHF. Plus a lot more to mention & report will be in next months' ETVDX.

-THIS MONTHS ISSUE CONTAINS-

Bob Seybold of NY reports goodies like WPDE 15 SC and stuff out to MN. Dave Nieman reports WUND-2-NC via tropo. A bunch a fine loggings this month also for Eric Voytko who had Buffalo NY & C100 28 from his DC area location. Tropo seems to be making up for the lack of E-Skip this year, good luck to everyone who got in on the excellent tropo in August and mid September! Please report to your respective columns. On to YOUR DX!

Bob Seybold 10567 Benett Rd Dunkirk NY 14048

After a so-so season as far as DX goes, it finally opened up tropo wise in recent days here. Starting August 20th till & including the 24th there was a solid run of tropo-300-1000 miles in various directions. There were many super catches including long awaited UHF from Florida on Aug 23rd. Some of the Dx seen as follows:

Aug 20th-evening-noted Louisville 32; Lexington 36, Cincinatti 48, Columbus 28 & 34, Dayton 16,22 & 45, WJTC 26, WPP0 42, WHIZ 18, WOUC 44, Mansfield 50, Ashland 59, Newark (Ohio) 51 and other tentative Kentucky U's;

Aug 21 ..morning- really opened up to West: all Chicago U's in quite strong; Rockford super 17,23,39 also LPTV's from Rockford 33,45 -all new. Iowa U's, Cedar Rapids 32, Red Oak 36, Souix City 14, Dubuque 40, Indiana U's 15,16,18,21,22,23,28,33,39,55,34, 46,62, Milwaukee U's 18,24,36,30,58; Green Bay 26,38; Bloomington IL 43; Champaign, Peoria, Decatar U's: Charleston 51, La Salle 35, translator on 65 from IL: Also translators or LPTV's on 15,59,69 all michigan. A channel 43 from Ironwood repeating Green Bay 11 (new): Later in the day-in evening-Madison U's 15,21,27,33 & 47: Plus Fox 18-Davenport: Michigan -U's 52,54,64,14,23,25,53,66,28,41, 19 plus 69 LPTV from South Bend and many unIDs buried under others-Band loaded-strong signals!

Aug 22-Morning, Madison U's in again, plus Green Bay, Cadillac, Western Wisconsin U's 20,28,55 (new). Milwaukee, Chicago, Fox 15 Ottuma Iowa (new): KVRN 15 North Dakota, unided Minnesota U's, other Wisconsin U's including 14- 2nd day in a row. Rockford 17,23,39 still in strong: South Bend, Lafayette, Ft Wayne U's all in: Michigan-Bad Axe 35: Grand Rapids 17,35 super: Kalamazoo 52 & 64: Muskogean 54, WUHQ 41: Many LPTV's from Michigan also. 65 from Milwaukee, Cadillac 27, Manister 21: WMCU 14, WUCM 19: As day wore on- Sudbury 19: Saulte Saint Marie 20 & others. On most of these days-Parkersburg 15: Columbus, Dayton, Newark -51, WOUC 44, Lima 27,35,44 all in: Pittsburg U's, all Elmira, Binghampton, Scranton, Utica Syracuse, Watertown, all in fairly good. Going back to Aug 21 in morning-forgot about these Plattsburgh 57in super, best ever seen. Canadians to the North and Northeast very good, CBC on 26 repeating Kingston 11 (new) CBC-59, Belleville 15,53, Ottawa 24 & 40: Montreal 35: Others on 20 & 42: Hull 30, 55: Ottawa 33 (rare) 32 & 38: Watertown 16 & 50 strong: Norwood 18: Burlington 22 & 33: Utica & Syracuse strong.

Aug 23-Super Opening to East coast and to Southeast near coastline, Hickory 14: Roanoke 15, WLYH 15, Hampton 15 super, and then in 2 days continuous: WPDE 15, WAAP 16, WBOC 16, Philly 17, Nashville 17, WCDC 19, Washington 20,26,50 & 66 (Manasses), Baltimore 24 & 45 & 67: Annapolis 22: Harrisburgh 21 & 27: York 43: Red Lion 49, Trenton 52, WITF 33, all Scranton U's super, Norfolk 33 (new) in 2 days: Prtsmouth 27 strong fro hours & hours, Roanoke 27, 38: WJKA 26, WRLH 35, WLFL 22- Raliegth 28: WWPB 31, WUMP 36, WFPT 62, Kingston NY 62: WNRW 45, WKPT 40, WFEC 38, 55,67,68 from NYC area, WLIW 21 super: Conn 30, 26, 61 all good. Waterbury 20: Boston 25: Burlington 22 & 33 strong, Binghampton WSKG translators on 60 & 69: Hagerstown 25 & 68: unided 63 (most likely in Virginia, NJ, or E PA) -running old movies way into the night. Blank video carrier on 69- 2 AM & after. Aug 23 continued, 23 & 47 Altoona ,NJ 65 w/HSN, number of translators on 64: unides on 59, Reading PA 51. Ch 48 repeating 24 Morgantown W.VA. This was a super opening-very strong signals-continuous hours & hours.

(Bob Seybold's report continues on the next page-BN)

Bob Seybold continued from the last page.

Aug 24 - Some still remaining but fading slowly- Norfolk, hampton, DC, NYC still in, also Harrisburg, York, Philly Baltimore, Scranton & Conn (some U's)- Normal reception later in the day.

Aug 25-27- General conditions down, but a few in: Columbus, Dayton, Louisville, Richmond 43: Bloomington 42, Springfield 26 & lots of tropes scatter- No real strong signals.

Thats it for now Bob Seybold

Matt Sittel 603 Fulton Rd Apt B-24 Tallahassee FL 32312 904-386-2212

4 Bay UHF w/Winegard CP-4800 Pre-Amp, Teknika TV-22 Tuner, Rabbit ears for WF SANO 13" TV Indoor Antennas @ 15' AGL, elevation is about 185 ft.

AUGUST 1992 ALL TROPO

26 2301 WJCL 22 GA 205	29 0659 WJCL 22 GA 205	29 0859 WLTX 19 SC 323
2304 WTGS 28 SC 205	0700 WTGS 28 SC 205	30 0917 KHTV 39 TX 671
2305 WTAT 24 SC 317	0829 WXXV 25 MS 283	0929 KRIV 26 TX 671
29 0645 WMAH 19 MS 276	0845 WGNX 46 GA 229	1224 WMAH 19 MS 276

I didn't include any of the under-200 mile loggings, as I haven't logged a whole lot yet, and after I see more stations, I'll list only the New loggings (after I've gotten most of the near ones) I had my UHF antenna outside, But I bought it indoors as it didn't seem to make any difference where it was. I can use the "Armstrong Rotor" indoors and watch the signals at the same time. I get scatter from WPML-15 & WSRE 23 almost all the time anyway. I don't get the locals real well, though. And VHF is full of cable leakage. As for where I am in relation to where John Combs was, I'm about 5 miles WNW of his old QTH. I'm only about a 1/2 mile South of I-10, and near some local FM's. After about 2 weeks of rainy, DXless days, I got to enjoy some good stuff! The TX stations came in at the end of a fantastic FM opening (see SFMDX). At times, though, I had nothing on TV (not even WSRE!), and Texas on FM. Go Figure (Its called frequency selective ducting, great DX on FM nothing on TV or visa versa TV is great, FM poor. I've seen it a few times-BN) I got KRIV-26 on tape, thanks to the Teknika. John Combs kindly sold one of his Teknika's, as he found an extra TV tuner at a HamFest. Thanks John! 73's Matt

(Matt nice going with your TX DX from your new location, if the cable leakage is really that bad, call the cable company to complain. Maybe there is a illegal tap. If that doesn't help, call the FCC, if it really is THAT severe, the FCC could shut the cable down!-BN)

Frank Wheeler 6589 Wattsburg Road Erie PA 16509

6/13 ES 1500 WEDU 3 FL 888	6/16 Tr 1100 WKJG 33 IN 267	7/7 ES 1600 WDIQ 2 AL 802	7/18 1833 CKCK 2 SK
2314 KMTV 3 NE 817	6/17 ES 1708 WAGN 2 CO 1312	2054 KPRC 2 TX 1212	7/28 1100 KJRH 2 CK
6/14 ES 1300 KLEB 2 SD 896	6/20 ES 2203 KUNE 3 NE 1005	7/11 ES 1059 KUNE 3 NE 1005	1000 CBMT 3 NS
1430 KPRC 2 TX 1212	7/4 ES 1958 WPHI 2 FL 1009	2000 WPHI 2 FL 1009	7/29 1158 KJMO 2 WY
6/16 Tr 0806 WNDU 16 IN 312	7/7 ES 1427 WML 4 IA 1002	7/18 ES 1402 KSNW 3 RS 962	1100 WPHI 2 FL
0830 WANE 15 IN 267	1530 WBRZ 2 IA 1016	1436 WLBZ 3 MS 880	8/10 1100 WPHI 2 FL
			2030 CBMT 3 MS

Robert Grant 8226 Beaverland Detroit MI 48239 313-RE0-8966

JUNE 1992 TROPO FROM DETROIT

29 0130 W50CC CH	29 0140 Sandusky-text	29 0205 CCCC 25 CN	29 0300 Torontoes
(WFD 68)	CBCE 16 CN	Sutbury/LaChaire	0540 CICO 19 CN
W58CC CH	0155 CKCO 11 CN	CBEN 20 CN	Sutbury @ WDJ0
(Toledo TRN)	CBEN 45 CN	0205 CQNC 9 CN	W32AN ??
0140 W41AP CH	CICO 12 CN	CBFT 68 CN	FSK GW ID-where???
7/20 ES -(Mobile near Shamrock TX) 1650 WDTN 2 OH t	7/21 ES From Colorado Springs CO		
7/21 ES -(From Dalhart TX) 0959 WBAY 2 WI	1700 WBAY 2 WI		
7/28 ES -(From Carelton MI	KGAN 2 IA		
2000 KOTA 3 SD	WIMJ 4 WI		
KIWO 2 WY	WHBF 4 IL		
KCAC or KWSE-4	1707 WCIA 3 IL		
(Combs @ WDIV)	1711 WMMT 3 MI		
KNDX-2 NDC // & @ WJFK			

(Robert Grant's report continues on the next page)

Robert Grant continued

Es in '92 a disappointment, but better than the total absence in 1991. Began good this year but it lost steam at the end of June. 6/29 tr was a very good opening, with a very sharp Southern cutoff (note logging of the WMFD translator, but not its primary!)-the lucky break was all major Detroit UHF's were off the air. too bad I can't count ghosts on loggings. When W41AP was strongest, I had ghosts on CICO32-32 and CBFT-54 to the south that were about 10 lines Down Vertically, indicating a path on the order of 100 miles longer-I suspect the ghoster was the cooling tower of the Davis-Besse nuclear power plant in Ohio. The distance in this opening was to the north, with rare Sudbury loggings. I doubt the 23.7 kw power listing for CBCE in the data base, the near snowfree logging in this opening and other reports from other Dxers in the past seems to say that what flows through the final of CBCE's transmitter, is no little current.

The big vacation produced no unusual DX, but it was fun to log WMMT by ES in CO, days after seeing it by GW in Detroit (also WCIA seen in IL by GW), then KOTA-3 by Es at my in-laws', 3 days after watching a movie on it in a Rapid City motel room! Also took the TV to the top of pikes peak, denver stations were snowfree, and KGWS was fair, but my loop antenna kept falling apart. making a serious bandscan impossible. 73 & Gud DX

Tom Bryant 849 Todd Preis Dr Nashville TN 37221 615-646-2000

AUGUST 30 1992 ALL TROPO

0202 WXIN 59 IN 269	0400 WTLW 44 OH 358	0431 WTLK 14 GA 178
0250 WBGU 27 OH 387-cb	0409 WRCT 45 OH 292	0442 WHNS 21 NC 243

Comments; Jeez..what a lousy month...No ES, No MS, No Au: just plain P.U. !

(Does PU stand for Probagation Uncooperative -Hi Hi-BN)

Thanks to the ONLY opening of the entire month, did nail two new U's. A few relogs are included to give an indication of the extent of the opening. Also in were all Louisville Chattanooga and huntsville U's: and a couple out of Atlanta. it just has to get better! Station count now totals 338. GoodDXing! Tom

Bob Smolarek 31 Mark Drive High Bridge NJ 08829

AUGUST 1992 ALL TROPO

23 0005 WFXI 8 NC 409	23 2030 WMPB 67 MD 131	23 2314 WVEC 13 VA 280
0008 WFLP 22 NC 404	2244 WCPB 28 MD 162	24 0630 WCVB 23 VA 263
0010 WKFT 40 NC 420	2254 WMPB 31 MD 177	Best Ever
0023 WHAC 25 MD 177	2300 WHSP 65 NJ 65	0635 WTKK 66 VA 188
0031 WRDC 28 NC 398	Overloading!	

August 23rd was one of the greatest trop days I've ever seen, we don't see Tv stations 400 miles away too often.

Joseph Fela -150 Robert Place - South Plainfield, N.J. - 07080

Equipment: G.E. monitor, Antennacraft P-7 dish @ 35 ft., Winegard PA-4975 amp, rotor. For VHF, the FM antennas are used.

AUGUST 1992

13 GW	0315 WGTW 48 NJ 58	23 Tr	0000 WYDO 14 NC 385
	(Burlington, NJ, initial tests)		0030 WPDE 15 SC 507
	DX GTG here with free DX, including		2214 W44AD 44 VA 210
	Baltimore 24 and 45, Salisbury 16 and 28;		(Onancock - WTKR-3 Norfolk)
	Norfolk 15, 27, 33; WTKK-66 exceptional,		2314 WJAC 6 PA 240
	WLFL-22 NC, WCNC-36 NC, WKFT-40 NC, and		(WPVI phased)
	W3BAV-38 Luray, VA (repeating WVPT-51).	24 Tr	0001 WUND 2 NC 340
	2258 WECT 6 NC 469 (WPVI phased)		(s/off, WCBS phased)
	2300 WFTX 8 NC 410		0028 W25AA 25 VA 210
	2359 WUNM 19 NC 425		(Onancock, relaying WLYH-15
	2359 WUNJ 39 NC 477		after WHRO-15 s/off).
			0031 WJKA 26 NC 491
			0200 WKBS 47 PA 220

A few times on 8/22 and early 8/23 are approximate as are a few milages (didn't have a chance to calculate them exactly). WEXP-27 (testing 3-D television) and WEXP-28 (HDTV testing), both Stevens Institute, Hoboken, N.J. have been off the air for weeks, perhaps for good. W36AS in New Brunswick, N.J. continues an erratic schedule. They will run a day or two on a 24 hour basis carrying something called the American Family Entertainment Network. Then they'll vanish for a number of days or even a week. However, they are still on most Friday, Saturday, and Sunday evenings with Indian programming. 73, Joe.

Bob Timmerman 1210 Desoto Ct. Auburn IN 46706 EST year-round

Equipment: 1975 Quasar AC/DC B&W, 4-bay UHF indoors, rabbit ears

September 1992

4 Tr 0400 KARE-11 MN 480 4 Tr 2200 KMEG-14 IA 583 4 Tr 2230 KYIN-24 IA 421
 2100 KCRG-9 IA 356 2215 KWWL-7 IA 331 5 Tr 0035 WJFW-12 WI 363

Look for a new LPTV on channel 19 in Defiance, Ohio.

WINM-63 has been off the air for many months and may not return this year. Their transmitter site was destroyed by teenage vandals. The jerks were caught and now reside in a state prison. WINM's translator, W66BD Fort Wayne, is still on the air.

Eric Voytko 1721 Dalewood Place, McLean, VA 22101

703-356-9663

Equipment: UHF-Screened 6' Channel Master dish, Winegard PA-4975 preamp and 6 UT-2700 traps
 HD73-1 rotor, RG11/064 Foam, 35' AG
 VHF-Channel Master Quantum 1110, Archerotor, RG11/064 foam, 35' AG
 RECEIVERS-Icon TV/R-7000, JVC HRD9700 VCR, Zenith and Sony Monitors

August 1992

5 Es 1824 KJRH-2 OK 1030	0901 MUF-3	2321 WICU-12 PA 260
6 Es 1937 KOTA-3 SD 1390	Tr 0944 Durham NC U's	2328 CKCO-13 ON 360
22 Tr 1333 Scranton PA U's	0945 WUNJ-39 NC 320	2348 WNEB-17 NY 300
1543 WXTV-41 (NJ) 210	0948 WPDE-15 SC 340	24 Tr 0028 WLVT-39 PA 150
1544 WNUJ-47 (NJ) 210	1029 WCCB-18 NC 320	0051 CHCH-11 ON 330
2231 WUND-2 NC 220	1105 Norfolk 3-10-13	(u/WBAL)
(u/WMAR)	1124 Scranton PA U's	0107 Chrille. NC U's
2233 WYDO-14 NC 250	1128 WSKG-46 NY 230	0600 WENY-36 NY 220
2242 WUNJ-39 NC 320	1149 WWCP-8 PA 140	0603 WHEE-68 NJ 210
2244 WTVI-42 NC 330	1150 WTAJ-10 PA 130	WHSI-67 NY 260
WCNC-36 NC 320	(Most of these today	0605 WXTV-41 (NJ) 210
WJZY-46 NC 330	in all afternoon)	0644 WLIW-21 NY 240
2348 WFXI-8 NC 280	2250 WFSX-3 PA 170	0649 WSKG-46 NY 230
23 Tr 0803 Charlotte NC U's	2252 WFXI-11 PA 180	0700 WICZ-40 NY 230
0805 WERA-15 VA 200	2255 WQEX-16 PA 180	0728 WNAC-64 (RI) 370
0823 WEPK-38 VA 200	2303 KDKA-2 PA 180	0729 WEDN-53 CT 320
0832 WNRW-45 NC 250	(o/WMAR)	0734 WYDC-48 NY (L)
(u/WBFF)	2311 CICO-TV-28 ON	0845 WSEB-36 RI 360
0834 WFTT-27 VA 200	(See note)	0847 WJIG-55 NY 260
0854 WSLN-10 VA 200	2313 WSEE-35 PA 260	
ES 0855 WBRZ-2 LA 990		

NOTE-was very weak, zero offset and French, same direction as CKCO and CHCH. The '87 Database lists this and others on 28z as English, but I'm assuming it was CICO-TV-28 for lack of a better explanation.

Strange weekend of tropo on 9/22-24. As it never really burned off during the day. Best part was late on 23rd and 24th, filling in much needed gaps to the north. CKCO-13 is a new VHF tropo record for me, and I have not logged WNAC since 10/90. On the down side, no matter how good it gets, I can't seem to break the 400 mile mark. Hopefully that will happen this fall.

On the 23rd I had E-skip in the middle of a tropo opening that had me nuts, but I decided to stay on tropo hunting. I still managed to ID WBRZ, which seems like a local sometimes.

I am back to using a PA4975 that I just bought from Ford Electronics. They have about four left if anyone still wants one. Speak with Darrell.

Distances shown in my reports are obtained from the Map feature on my MacII, based on the Transmitter coordinates listed in TV Factbook. It rounds everything off in tens, but is more accurate than using the Atlas and cities of license.

Have noticed unknown testing locally on ch. 38; on 9/1 had full cb green scale from 1724 to 1752, and multi-color on 9/2 from 1800 to 1830+. On 9/2 called FCC Monitor station in Columbia, MD and they saw it too, but they were unaware of any authorized tests and are looking into it.

More symbol used in ETVDX- \$-Stereo de-From t-tentative TBN-Trinity Broadcast Net
 VJN-Video Jukebox Network (also now known as The Box) cci-co-channel interference
 HDIV-high definition TV phased/phasing-nulling out a local/semi local for DX on same channel
 cb-color bars s/f-snow free ns/f-near snow free lcl-local slcl-semi local
 PH/O -Phased over SB- Same Bearing as (when phasing a semi/local same bearing as the DX)

Dave Nieman 12284 Nice Road Akron New York 14001-9529

Equipment: RCA 19" b&w TV with Teknika 6510 tuner, Channel Master 3617B VHF on a CDE rotor at 23 feet. Channel Master 4251 UHF (7' dish) with Blonder-Tongue CMA-Ub preamp on a crankup tower at 30 feet with Alliance HD-73 rotor. Using RG-11 coax for both antenna.
 New loggings are underlined. New call {KKKK}.

August 1992

21 GW 1430 22 ON ??

UnIDed channel 22 testing with best reception with antenna north. The signal was better than Peterborough UHF stations but not as good as Toronto UHF. Dave

Dave Nieman Ho-Sta-Geh, Road Rock City, New York

Equipment: RCA 9" b&w TV, Radio Shack V-110 VHF at 25 feet, Channel Master 4225A UHF with DX Tele Lab EU-45 preamp at 30 feet both antenna on Radio Shack rotor. Using RG-6 coax.
 New loggings are underlined. New call {KKKK}.

August 1992

15 Tr 0630 WKYC 3 OH 170	August 1992	22 Tr 2118 WYOU 22 PA 151	August 1992	23 Tr 0705 WTKK 66 VA 232
22 Tr 0823 CBLFT8 61 ON 142	2135 WETA 26 DC 228	0837 CFJP 35 PQ 344	23 Tr 0617 WTKR 3 VA 388	color bars
0845 CBLN 40 ON 156	0629 WUND 2 NC 438	0858 CBLN1 56 ON 142	color bars	0729 WUSA 9 DC 228
0900 WPMT 43 PA 168	color bars under WGRZ Buffalo	0900 WPMT 43 PA 168	0634 WVIA 44 PA 151	0730 WDCA 20 DC 228
2047 WHSW 24 MD 212	color bars	2052 WQLN 54 PA 82	0700 WPGH 53 PA 135	0732 WHRO 15 VA 363
2057 CBLFT13 15 ON 158	0700 WNEO 45 OH 156	2104 WITF 33 PA 147	ALL LOGGINGS ARE NEW	

Tropo seen on the 22nd and 23rd may have been caused by Hurricane Andrew. All the signals on VHF made IDing all but impossible. It looked like strong E-skip up to channel 13. Dave

Dodie from Joisey PO Box 2999 Clifton NJ 07015-2999

Super tropo conditions have excited a lot of DXers and I have heard some very outstanding loggings of very rare paths. Unfortunately not much has happened at this QTH, in fact I pretty much missed out on the whole thing. In fact I'm much more of a FM DXer than a TV DXer, so when I got tips that Michigan was coming along with New Brunswick Canada and a day earlier or so, a FM DXer logged Chicago and despite being home during most of this period, nothing of significance occurred on FM here. TV however I fared a bit better on September 13 (forgot the time) Joe Pela called and told me WSYT 68 was coming in, sure nuff with lcl 68 off - there it was, but at ID time they faded out also WICZ ch 40 from Binghamton NY was doing real well too, Sept 14 @ 0059 IVO ch 24 from Ottawa was in weak but readable, my first Canadian ever on UHF! What a thrill. And the next nite on Sept 15 at 0150+ I saw Burlington VT ch 33 VEIV also ch 28 Vermont EIV, VEIV was last seen in the fall of 1990 during that years' Super Tropo session. Goodxing!

Editors' tidbits... I have two more reports left to do, the reason why they weren't in here, is because they were both long, both came after the deadline and MY deadline is close, and either one would've been split between this issue, and next months issue. Sorry for the delay guys, forgive me for hogging some of this page. Also I had to change daisy wheels on my 'printer', thats why the type is different this month.

Untimely Ch. 13 interference

PUBLIC station WNET Ch. 13 was hit with signal interference Sunday and Monday night at the worst possible time, the start of the August pledge drive.

Viewers noticed Ch. 13's picture flickering, and the ghost of another station's signal in the background, which was, ironically, that of Baltimore's WJZ, which Ch. 13 general manager Bill Baker previously ran.

Baker said an investigation showed the interference, called co-channel interference, was due to problems in the atmosphere, possibly caused by Hurricane Andrew, and would eventually go away on its own. In the meantime, though, he said Sunday pledges were off about 50%.
 - Elizabeth Jensen

The above from the NYC Daily News August 26-in reference to 8/23 & 24.

SOUTHERN FM DX

OCTOBER 1992

Danny Buntin
1312 N. Skyline
Stillwater, OK 74075

DEADLINE: 14th

GULF TROP COMES IN AGAIN WHILE SOME HOT TROP FOUND IN KILL DEVIL HILLS, NC

Greg Coniglio, 5100 Glenwood Dr., Williamsville, NY 14221

Vacation DX: Kill Devil Hills, NC. One night had an interesting trop opening.

Equipment: Samsung digital boombox, whip, on 3rd floor

7/21 tr

(all 2100-2400)

WHYY 90.9 PA Philadelphia 285
WMGS 92.9 PA Wilkes-Barre, Magic 93, rm\$368
WPAT 93.1 NJ Paterson, light mx 340
WYSP 94.1 PA Philadelphia, Eagles promo 285
WMNR 93.3 PA Philadelphia, album r\$ 285
WSTW 93.7 DE Wilmington, wiping out WKOC259
WPLJ 95.5 NY New York, r\$, 95.5 PLJ, tough
in WOBR slop 340
WFLN 95.7 PA Philadelphia, c\$, wiping WILTY285
WTR 95.9 DE Bethany Beach, rp\$, 96 Rock170
WQXR 96.3 NY New York, c\$ 340
WVDB 96.5 PA Philadelphia, o/WDCX 285
WBSS 97.3 NJ Millville, way over WGH-FM 250
WPST 97.5 NJ Trenton, local sig., r show 304
WSKQ 97.9 NY New York, o/WKAF/WLQO, SS 340
(WNSH 97.9 PA Hazleton, over mess, tough catch
w/so many 97.9s closer(NYC, WIYY, WKZF) 340
WRKZ 98.5 PA Wilkes-Barre, in the clear with
top 40, this & WMGS pretty far inland for
coastal trop! 368
(Tent. ch 24 Syracuse at this point. I knew
I was onto something big.)

7/21 tr

WRKS 98.7 NY NYC, topping WKOO, WKSI, WNOR
WMZQ mess 340
WCBS 101.1 NY New York, oldies 340
WRKE 101.7 DE Ocean View, rs\$, 100.7 Kiss FM
WQCD 101.9 NY New York, j\$ o/WLIF and WIKS
WIOQ 102.1 PA Philadelphia, rs\$, local 285
WSJL 102.3 NJ Cape May, tough in 102.5 slop
WOLC 102.5 MD Princess Anne, o/local WERX150
WNEW 102.7 NY New York, in briefly 340
WMGK 102.9 PA Philadelphia, tough o/WOW! 285
WABE 104.1 PA Allentonw, B104, r\$, strong! 322
WYXR 104.5 PA Philadelphia, Star, rm\$ s 285
WIOV 105.1 PA Ephrata, k\$ 310
WDAS 105.3 PA Philadelphia, tough o/WMXN, s\$
WLAV 105.5 MD Salisbury, rm\$, Love 105 170
WEGX 106.1 PA Philadelphia, Eagle 106, r\$285
WLIW 106.7 NY New York, mr\$ 340
WRKZ 106.7 PA Hershey, k\$, 2107, calls 300
WKDN 106.9 NJ Camden, topping WAFX 285
WBLS 107.5 NY New York, over mess of WKRE,
WKZL, WSMF 340
WFSI 107.9 MD Annapolis, g 235
WEEB 107.9 CT Westport, rm\$, both o/WNCT 355

Quite a nice opening. I knew something was up when driving home, stations from southern NJ, Eastern Shore of Maryland, etc., were staying in on the car radio will into north-east Pennsylvania. When I got back to Williamsville, I was shocked to discover that what were my locals and semi-locals down there were coming in a home! (Not as shocked as I would have been if I had not seen Syracuse tent., but still surprised). Watch NFM for details on that; I had stuff down to VA & NC out to 570 miles. I have never visited the Outer Banks before, nor have I heard that area on trop ever, and immediately upon returning home from there, my first ever trop opening to there?!? What are the odds?!? I heard WNHV 92.5 here, which was only 2 miles from where we stayed! I am sure that Hurricane Andrew had something to do with this. Reporters in NJ seemed to have had both my locals and NC in at the same time during these days. The opening faded out early AM Aug. 24 and did not return. The Outer Banks is an excellent location for FM DXing. (But can you possibly get a decent paying job if you want to go there to live and DX? DB) It is so far from everything that under dead conditions, the band is very open. Even stuff that you would think would be strong (Norfolk-70 mi., New Bern stuff-100 mi.) seem to be nullable during openings, and even fade occasionally on the car radio. For the week, a total of 201 FM stations were heard, most of which being tropo-scatter during dead conditions, or minor openings inland which seemed to happen when there were thunderstorms in the vicinity. the farthest south heard was WZZL 103.5 Charleston, SC (about 320 miles), which came in one evening for about 15 min. Otherwise, the circle of normal reception was: Conway, Georgetown, SC (104.1, 97.7), Charlotte (104.7, 101.9), Winston-Salem area (most of them were in all the time, very strange for the 250 mile distance and just a boombox-maybe cause that window was facing inland this cut down the coastal stuff), Roanoke (89.1 in often, 94.9, 107.9 once in a while), Washington-Baltimore, South Jersey and Philadelphia with slight enhancement to the north. Most of North Carolina east of Winston and Charlotte was in very often, although fading was commonplace. In non DX terms, the Outer Banks were also very nice, there was plenty to do, plus the wilderness areas of the National Wildlife Refuges were very scenic; very beautiful land. I hope some others got in on this (or any other DX of note) and look forward to reading about it. Keep up the great work, Danny! 73. (Thanks but I apologize to the language purists when in the Sept. column I wrote season's rather than seasons and its rather than it's. DB)

A NOTE FROM RON WING OF WICHITA...I wanted to report some information which could save DXers from confusion. KTCM-100.3 (Kingman, KS) simulcasts KBUZ 99.1 (El Dorado, KS) 100%, apparently via off the air pickup.

SOUTHERN FM DX

OCTOBER 1992

Hank Holbrook, 407 Arundel Rd, Fair Haven Cliffs, Dunkirk, MD 20754

(Fair Haven Cliffs overlooking the Herring & Chesapeake Bays 15 miles below Annapolis, MD) Equipt.: Scott 310E FM tuner (from 60s) with an Archer Amplifier, Winegard CS-6065 single bay 10 element yagi with a Channel Master HL-9515 rotor

FREQ	CALL LETTERS	LOCATION	MILES	DATE	TIME EDT	REMARKS
96.1	W T T H	MARGATE, NEW JERSEY	TROP 120	6/13/92		0855-0923 Good-Nil to some QRM WGCB - ID as 96.1 WPTH THE TOUCH. Rock plus commercials. (HOLBROOK, MD)
95.3	W D N O	LAUREL, DELAWARE	TROP 55	6/13		1314-1338 Good- NIL QRM - Id as MAVERIC 95-Rock- Community Notes-Commercials. (HOLBROOK, MD)
91.1	W W N J	DOVER TOWNSHIP, N.J.	TROP 180	6/15		0932-0955 Good -fading after 0950 EDT. CLASSICAL MUSIC 89.1 WFM Trenton & 91. in Dover Township. Plus Weather. (HOLBROOK, MD)
88.9	W J M J	HARTFORD, CONNECTICUT	TROP 275	6/18		0455-0526 Good prior to 0514 and then fading. Pop music from 40s and 50s. etc. News & Weather. (HOLBROOK, MD)
88.9	W C V E	RICHMOND, VIRGINIA	TROP 100	6/26		0509-0552 Good & in clear till WEA sign on at 0552 and then covered by the Baltimore stations. NEWS/WX/CLASSICAL MUSIC. (HOLBROOK, MD)
102.7	W B K R	PETERSBURG, NEW JERSEY	TROP 100	6/26		0827-0905 In and out w/moderate to heavy QRM WXTV Md. Relay WIP SPORTS 610. Station expressed shock when I call them they could be heard "so far".(HOLBROOK, MD)
105.9	W X J N	LEWES, DELAWARE	TROP 80	6/27		0734-0750 and gone -Little to very heavy QRM WCXR Va. (Surprised they were so poor as reception here favors NE.) Slogan is the ALL NEW KIGKS 106. Country music. WX and commercials. (HOLBROOK, MD)
99.3	W V E S	ACCOMAC, VIRGINIA	TROP 90	6/29		0859-0932 STRONG - Country music and commercials, weather- WVES ALL THE TIME 99. (HOLBROOK, MD)
91.7	W L F R	POMONA, NEW JERSEY	TROP 120	7/3		0002-0016 -Strong on excellent opening. Hardcore rock - PSA and long sign off message. Off at 0016 EDT! - (HOLBROOK, MD)
98.3	W K T U	OCEAN CITY, NEW JERSEY	TROP 110	7/3		1028-1102- Good mood of period- Nil to heavy QRM (after 10:48 from WECY DE.) OLDIES-WEATHER-COMMERCIALS. Good report (HOLBROOK, MD)
92.3	W X R K	NEW YORK, NEW YORK	TROP 200	7/6		0954-1018 Good prior to 1015 and then eventually faded under WEQR Md. News- (Their view of the news!) Commercials. K-ROCK ID. (HOLBROOK, MD)
107.7	W G T Y	GETTYSBURG, PENNSYLVANIA	85 TROP	7/13/92		0218-0237 -SO SO thru QRM splash WBLS NY 107.5 /WFSI MD 107.9/& some WRCT VA QRM under on channel. COUNTRY 108 Music and weather. LOST 0237 in QRM./ 0305-0339 STRONG nil/slight WICO QRM, GODDEN OLDIES- EXTRA 104.3 WXNJ (frequent ids). Also Weather.
14.3	W X N J	AVALON, NEW JERSEY	110 TROP	7/13		(HOLBROOK, MD)
107.7	W R C Y	WARRENTON, VIRGINIA	65 TROP	7/15		Good - local not QSLd -in clear - THUNDER 107.7 - Washington's Rock & Country. 0408-0456 (HOLBROOK, MD)
98.7	W F N N	VILLAS, NEW JERSEY	100 trop	7/19		In & Out thur local WMZQ. Pop music commercials. FUN 98.7 WNNN. (80-90s) (HOLBROOK, MD)
89.7	W T M D	TOWSON, MARYLAND	55 TROP (local)	8/13		1916-1940 -Music Noahs Ark etc PSI & WEATHER. STRONG. (HOLBROOK, MD)

Matt Sittel, 603 Fulton Rd. Apt. B-24, Tallahassee, FL 32312 (904) 386-2212

Equipment: Yamaha TX-900U tuner with modified filters, Archer rabbit ears.
2nd floor apartment, approximately 15' AGL and 185' ASL.

8/15 tr	8/30 tr -Great tropo continues! Day 2-		
1031 WLTS 105.3 LA Slidell, calls	0644 KQID 93.7 LA Alexandria, 93-QID	487	
8/16 tr	0655 KBXX 97.9 TX Houston, The Box,s	663	
0004 WMAH 90.3 MS Biloxi, PRM	0700 KXIN 107.5 TX San Antonio, Tejano	854	
0048 WZBA 104.9 MS Moss Point, calls	0706 KMJQ 102.1 TX Houston	663	
2145 WMJJ 96.5 AL Birmingham, Majic	0714 KIKK 95.7 TX Houston, area ment.	663	
2254 WQID 93.7 MS Biloxi, 94-QID	0754 WBHY 88.5 AL Mobile, calls	226	
8/17 tr	0759 KHCB 105.7 TX Houston, ID	663	
2159 WSVH 91.1 GA Savannah, ID	0800 KUHF 88.7 TX Houston, ID	663	
8/18 tr	0803 KXKZ 107.5 LA Ruston, ID	511	
1013 WCHY 94.1 GA Savannah	0830 KQKQ 106.5 TX Galveston, calls	634	
8/20 tr	0857 KKBQ 92.9 TX Pasadena, Easy k	655	
2320 WKKA 92.3 FL Orlando, K-92,Hi John	0910 WTYX 94.7 MS Jackson, Oldies 94	370	
8/21 tr	0915 KHMZ 96.5 TX Houston, Mix, in \$!!	663	
0009 WUSA 100.7 FL Tampa, over WFPS	0940 WZBZ 97.1 LA New Orleans, B 97	349	
0017 WJHM 101.9 FL Daytona Beach	1000 fade-outs...but then...		
8/25 tr -Hurricane Andrew related-	2335 KZFX 107.5 TX Lake Jackson, in \$!!	676	
0730 WKNN 99.1 MS Pascagoula, wx info	2346 WZBZ 97.1 LA New Orleans, B 97	349	
0739 WKXI 107.5 MS Magee, k, Kixie 107	2358 KCIL 107.5 LA Houma, ID	389	
0755 WOKK 97.1 MS Meridian, local ad	8/31 tr -Great tropo still! Day 3-		
0759 WMBV 91.9 AL Dixons Mills, ID	0005 WQCK 92.7 LA Clinton, Q 92.7	400	
8/26 tr	0014 KILT 100.3 TX Houston, WSGY off	663	
0754 WALX 100.9 AL Selma, local ad	0018 WFMF 102.5 LA Baton Rouge, calls	410	
2215 WYUU 92.5 FL Safety Harbor, U-92	0039 WZBA 104.9 MS Moss Point, calls	249	
2259 WLOW 106.9 SC Bluffton, ID	0059 WRKF 89.3 LA Baton Rouge, ID	410	
8/29 tr -Three days of SUPER tropo! Day 1-	0104 KUHF 88.7 TX Houston, ID	663	
0927 WZZK 104.7 AL Birmingham, calls	0703 WMSM 97.5 MS Oxford, Miss 98	406	
0932 WBUB 107.5 SC St. George, ad	0708 WVRV 105.1 TN Waverly, V 105	437	
1016 WALR 104.7 GA Athens, 104.7 FM, s	0714 WYHY 107.5 TN Lebanon, Y 107	412	
1016 KXKZ 107.5 LA Ruston, ID, Kix 107.5	0718 WNP1 102.9 AL Linden	241	
2043 WAPW 99.7 GA Atlanta, Power 99	0729 WZBQ 102.5 AL Jasper, Z 102	290	
2059 WRAF 90.9 GA Toccoa Falls, ID	0734 WDXX 100.1 AL Selma, Dixie 100, k	209	
2112 WSKZ 106.5 TN Chattanooga, calls	0734 WBLE 100.5 MS Batesville, k 101	424	
2122 WFBC 93.7 SC Greenville, wx	0739 WZRR 99.5 AL Birmingham, r	256	
2136 WHPT 102.5 FL Sarasota, The Point	0747 WDJC 93.7 AL Birmingham, calls	256	
2152 WWMS 97.5 MS Oxford, ad	0756 KQID 93.1 LA Alexandria, 93-QID	487	
2157 KOUL 103.7 TX Sinton, ad for C.C.	0759 WBHM 90.3 AL Birmingham	256	
2159 WKXI 107.5 MS Magee, Kicksie 107	0759 WMAO 90.9 MS Greenwood, PRM	403	
2206 WZBZ 97.1 LA New Orleans, Thanks	0802 WQSB 105.1 AL Albertville, calls	284	
2209 WCKW 92.3 LA Laplace, Jeff	0810 WMJJ 96.5 AL Birmingham	256	
2213 WRNO 99.5 FL New Orleans, Kruszkal	0825 WENN 107.7 AL Birmingham	256	
2239 WQSB 105.1 AL Albertville, calls	0826 WDRM 102.1 AL Decatur, k	325	
2240 WENN 107.7 AL Birmingham, Win, s	0829 KXKZ 107.5 LA Ruston, local ment.	511	
2249 KZFX 107.5 TX Lake Jackson, Z107	2215 WDUV 103.3 FL Bradenton, EZ 103	232	
2330 to bed...	2224 WEEJ 100.1 FL Port Charlotte	276	
Little did I know what was yet to come...	2226 WCTQ 92.1 FL Venice, calls, k	259	

So this is what DXing in Florida is like! So far, I like it! It certainly took awhile for any DX to develop (I arrived 8/10) but when a cold front pushed through at the end of August bringing us an all-time record low for August (58°-brrrrr, hi!) it also cleared the air for some great DX! I noticed KXKZ by accident, just setting DX presets on my car radio. I had 3 stations in at the time, which I thought were just images of very nearby locals (98.9, 96.1). But when I heard the legal ID, I was shocked!! And the DX just got better and better! 8/30 AM was amazing with all the Houston FM's coming in near full quieting at worst and KHMZ in stereo! Then it returned to the same area that night for awhile, then yielding somewhat to closer and more northerly signals. 8/31 AM was great, too, hearing lots of distant inland stuff like TN! I was (and still am) amazed at what a little cool air did for DX! I can't wait for fall DX to start up! So far school hasn't presented too many difficulties, except for having to leave early to find a parking spot (but I can DX when I get there, like I did 8/31 and still got KXKZ). However other students I work with tell horror stories of 70-hour weeks to work on a thesis. I can't wait... '73's Matt.

SOUTHERN FM DX IS FOR REPORTERS FROM: AL, AR, AZ, CA, CO, DE, FL, GA, HI, S, KY, LA, MD, MO, MS, NC, NM, NV, OK, SC, TN, TX, UT, WV, & WY.

NORTHERN FM-DX

GREG CONIGLIO
5100 GLENWOOD DRIVE
WILLIAMSVILLE, NY 14221

For DXers in: MA, NH, VT, CT, MA, RI, NY, PA, NJ, OH, MI, IN, IL, WI, MN, IA, NE, SD, ND, MT, WY, ID, WA, OR, AK, Canada

OCTOBER 1992 DEADLINE: The 5th LOG CUTOFF: 2 months from when mailed

Well August and September have been much better for tropo. In the midwest, there were many tropo openings in August, out to 900 miles. On the 22nd to 23rd, there were good Atlantic coastal openings, with rare inland paths to North Carolina. Tropo was also seen in September on the 4th, and the 13th, with some good distances reported. If you get any DX, why not share it with us!.....

dBRUCE HALL - 5 STIRTON AVE. - BRANTFORD, ONTARIO CANADA N3T 1E2

Equipment: JVC JRS201 receiver with three 110 khz filters, sleuth 205 amp. Probe 9 fed with RG6 at 50 feet AGL, crown rotor. (Distances are in kilometres)

JULY 1992 DX

29 Tr
0700 (WBZX) 99.7 OH Columbus, r "99 WBZX
Columbus, rockin' thru another Solid Rock Blitz
99 Seven, The Blitz", ex: WMGG 418

AUGUST 1992 DX

9 Tr
0908 (WBCT) 93.7 MI Grand Rapids, k, "New B93"
"You asked for a station that has more country
with yesterday's favorites and we delivered" 438

AUGUST 11 MS

0724 KMSR 94.3 MN Sauk Centre, r, \$ 24 after
six here on KMSR. 1200

13 Tr

0701 WRKZ 106.7 PA Hershey, k, Z107, "We
are the rapidly aging WRKZ" 436

26 TrS

0758 WPHD 94.7 PA Tioga, op, "758, Lynard
Skyndr, KGB FM". WRGB 92.5 Susquehanna
morning show simulcasted until 10am 405

The hourly rate for the visual Perseid Meteor Shower in August VUD did not correspond to the FM enhanced signals. I taped using a VCR for 50 hours on August 11th, 12th, and 13th. Aug 11th would appear to be the peak for FM radio. I still have hours of VCR tape to transfer to AUDIO tape. I listen to this shower on my 1/2 hour drive to my new employer in Simcoe, Ontario. More to report later as I find new loggings. Locally, CKGL 96.7 Kitchener has CRTC approval to switch to the AM dial. No dates announced yet. With country music being such a hot commodity now, I can't figure this switch out? Most disappointed with response to QSL's this season. I include SASE (40 cents US) and receive between 1 out of 4 to 1 out of 3. Most discouraging and costly considering 48c stamp to mail to USA. (My returns have been poor this year too, Bruce. Some years seem to be good, some aren't. I think it just depends what stations you write, who reads the mail there, etc.-gc). Any suggestions for a better return on my investment? Hope to have another Probe 9 for phasing soon, so lets bring on the tropo!
73, dB

HARRY HAYES - 9 HENRY ST. - WILKES-BARRE, PENNSYLVANIA 18702 (EDT)

Equipment: Wilkes-Barre: GE Superradio, modified with 110 khz filter, Jerrold 9 element antenna in attic with Radio Shack amp, and attenuator filter for locals. Thornhurst (12 air miles east of Wilkes-Barre in mountains): GE Superadio with Radio Shack FM rabbit ears. New underlined, distances in mi

AUGUST 1992

DX from Wilkes-Barre

8 Tr
0243 WKPQ 105.3 NY Hornell, ID, NESE net.
0248 WKFM 104.7 NY Fulton, strong, rr 145
From Thornhurst:
22 Tr
2300 WBXB 100.1 NC Edenton, v. good at
times with black gospel, ID, "Love 100", mention
Ahoskie on ID with Edenton 355
2327 WKTC 96.9 NC Goldsboro, fair with ads
and ID, c/w music 415

23 Tr

0000 WSCL 89.5 MD Salisbury, loud, ID 200
0002 WTEB 89.3 NC New Bern, "Listener
Supported Radio for East. NC", counting as tent
since no ID heard (Harry, I was in that part
of NC and heard them, and that is the exact
slogan that they use-gc)
0003 WKOC 93.7 NC Elizabeth City, rr, IDing
as 93.7 and 94.1, counting as tent as no ID hrd
(Again, that is the slogan they use-gc)
0900 WFPW 89.3 DC Washington, gospel 190
2045 WKHI 99.9 MD Ocean City, strong
with rr, "KHI" IDs 200
2049 WOCQ 103.9 MD Berlin, ads for Salisbury
and OC-104 ID, fair 200

AUGUST 23 Tr cont.

2100 WYFE 99.7 VA Norfolk, like a local at
times with ID on top of hour. Carried BBN pgm
For a second I thought I had a new local! 305
2140 WDSY 107.9 PA Pittsburgh, c/w, ID 230
2156 WFAS 103.9 NY White Plains, IDs and
soft rr, coming up very strong and wiping
out WOCQ 100
2200 WLJP 89.3 NY Monroe, good signal
with religion, ID // WFGB 89.7 90
2210 WHOM 94.9 NH Mt. Washington, showin
up with absolute local strength on just ears 300
2223 WAYV 95.1 NJ Atlantic City, heard
strong thru WZZO. 140
2239 WLQM 101.7 VA Franklin, fair with 6000
watt boost. Q102, satellite rr 320
2243 WBAZ 101.7 NY Southold, dobbing
WLQM, loud signal, satellite like IDs 160
2300 WVPW 88.9 WV Buckhannon, WV net
multiple ID. Could have been closer WVEP
Martinsburg, but showing in loc as this since
WVPW was previously logged and WVEP
was not. How's one to know in this case
2307 WALK 97.5 NY Patchogue, local like
with rr. I got tired so I quit

HARRY'S COMMENTS ON THE NEXT PAGE.

HARRY HAYESREPORT continues.

Every year on this weekend out family has a get together in the Poconos, and every year I leave my radio at home, and every year it opens up to traps. Well, this year I took my radio, and fortunately Murphy's Law seems to have taken a vacation (except for the incident during this opening when tentative WTEB-NC faded right on the ID after sitting thru a half hour of Cuban music) This opening will not soon be forgotten. I am looking forward to hearing what others got. (Harry, on Aug. 21 I was in Kill Devil Hills, NC and in the PM had all your UHF's snowfree! Also had WKRR 98.5 and WMGS 92.9 from there, and tent. WCNY-24! Coming home on Aug 22 in Hazleton I had WQHQ sounding like a local, and WSLT in strong. Then on the 23rd I had NC from here!-gc). Hurricane Andrew, despite being far away, must have had a hand in this. Best regards.

JOHN EBELING - 9209 VINCENT AVE. - BLOOMINGTON, MINNESOTA 55431

FROM BLOOMINGTON, MINN:

JULY 21 Es	
1704 KGAY 92.7 NM Tucumcari, per Atlas	
this one is 270 watts	866
AUGUST 1992 DX	
8 Tr	
1458 KWMG 93.5 NE Columbus	312
1509 KJJC 106.9 IA Osceola	264
2148 KTLB 105.9 IA Twin Lakes	182
2300 KZSD 102.5 SD Martin	434
2343 KSJQ 92.7 MO Savannah	NL
9 Tr	
0003 KRNE 91.5 NE Merriman	438
0020 KQSK 97.5 NE Chadron	504
0900 KRSL 91.3 MN Appleton	134
1001 KIAI 93.9 IA Mason City	116
12 MS	
0145 CKIK 107.3 AB Calgary	1053
0245 WVHR 100.9 TN Huntington	
45 second burst	662
0645 WALX 100.9 AL Selma	923
12 Tr	
2300 KHME 101.1 MN Winona, m, NEW	98
13 MS	
0300 KSLT 107.3 SD Spearfish	519
0301 KXXR 107.3 MO Lexington	391

FROM PROSIT, MINNESOTA

JULY 1992 DX	
7 Es	
0927 KDRK 93.7 WA Spokane	1161
0939 KBMG 95.9 MT Hamilton	1023
0940 KEWU 89.5 WA Cheney	1171
0947 KDXT 93.3 MT Missoula, XT93	1010
1025 KQFM 99.3 OR Hermiston	1273
1028 KCLK 94.1 WA Clarkston, k	1158
1240 KBOZ 93.7 MT Bozeman	883
1246 KZLN 96.3 MT Shelby	899
2015 KZMG 93.1 ID New Plymouth	1191
2212 KKOB 93.3 NM Albuquerque	1102
2217 KRST 92.3 NM Albuquerque	1102
2218 KKOR 94.5 NM Gallup, Core FM	1152
2229 KRZA 88.7 CO Alamosa	945
8 Tr	
0830 K208BQ 89.5 MN Brainerd (KAXE)	87
24 Tr	
0800 WELY 92.1 MN Ely	NL



Was not very impressed with the Perseids this year. Perhaps it was more active in the August 8 to 11 time frame before I tried (Aug. 11 was pretty good here, after that I agree-not too good-gc). That's it for this reporting period. Will advise if & when any new stations are received.
Regards, John Ebeling.

ALAN R. MILLMAKER - 2714 LAKE ROAD - CENTRALIA, ILLINOIS 62801

JULY 1992 DX

7 Tr	
0012 WNOI 103.9 IL Flora	
0100 WKKX 104.1 IL Jerseyville	
0127 WRVI 96.7 IL Virden	
0154 KCMQ 96.7 MO Columbia	
0202 KLOZ 92.7 MO Eldon, Z93	
0301 WJLY 95.3 IL Ramsey	
0536 WSMI 106.1 IL Litchfield	
0600 KBDZ 93.1 MO Perryville, B 93.1	
18 Tr	
0103 WRBT 94.9 IL Mount Carmel	
0332 WFMG 96.7 IN Vincennes	
0459 WDZQ 95.1 IL Decatur	
0653 WCBH 104.3 IL Casey	
0930 WKRB 107.1 IL Vandalia	
1005 KYYS 102.1 MO Kansas City	
19 Tr	
0056 KCGQ 99.3 MO Cape Girardeau	

JULY 19th cont.

0131 KTMO 98.9 MO Kennett	
0657 WKYA 101.9 KY Central City	
0901 WVEM 101.9 IL Springfield	
0908 WZNX 107.9 IL Arcola	
2300 WDNL 102.1 IL Danville	
20 Tr	
0721 WCFL 104.7 IL Morris	
0737 WKIO 92.5 IL Urbana	
2353 WITZ 104.7 IN Jasper	
21 Tr	
0031 KRES 104.7 MO Moberly	
1717 WFIW 104.9 IL Fairfield	
22 Tr	
0000 KTUI 100.9 MO Sullivan	
0035 KSLQ 104.5 MO Washington	
0054 KGBX 105.9 MO Nixa	
0201 WJPS 106.1 IN Newburgh	
0223 KFFB 106.1 AR Fairfield Bay	

ALAN MILLMAKER'S REPORT continues.

JULY 1992 DX

23 Tr	
0059 WCBO 107.9 KY Hopkinsville	
0119 WYMG 100.5 IL Jacksonville	
0222 WBKR 92.5 KY Owensboro	
0307 WSEI 92.9 IL Olney	
0402 KJBR 101.9 AR Jonesboro	
2100 KRYX 104.7 MO Chaffee	
2259 WGLM 106.7 IN Lafayette	
2339 WMRI 106.9 IN Marion	
24 Tr	
0309 WAJC 104.5 IN Indianapolis	
0339 WAZY 96.5 IN Lafayette	
0501 WHRZ 97.7 KY Providence	
0616 WLAC 105.9 TN Nashville	
1531 WSWT 106.9 IL Peoria	
1606 WTAZ 102.3 IL Morton	
2326 WIKY 104.1 IN Evansville	
25 Tr	
0101 KBKB 101.7 IA Fort madison	
0130 WMCI 101.3 IL Mattoon	
0613 WKZW 93.3 IL Peoria	
27 Tr	
0531 KJFM 102.1 MO Louisiana, STN # 200	
1732 WCZQ 105.5 IL Monticello	
1801 WWVR 105.5 IN Terre Haute	
1831 WJVO 105.5 IL South Jacksonville	
28 Tr	
0405 WWCT 105.7 IL Peoria	
0433 WNOI 103.9 IL Flora	
30 Tr	
0555 WMC 99.7 TN Memphis	
0615 WGKX 105.9 TN Memphis	
0618 WRVR 104.5 TN Memphis	
0628 WZXR 102.7 TN Memphis	
31 Tr	
0123 KFIN 107.9 AR Jonesboro	
0506 WHRK 97.1 TN Memphis	

WTEB 89.3 FM

Crown Community College P.O. Box 885 New Bern, NC 28560

AUGUST 1992 DX

1 Tr	
0304 WYNU 92.3 TN Milan	
2 Tr	
0053 KHLS 96.3 AR Batesville	
4 Tr	
2354 KOEA 97.5 MO Doniphan	
5 Tr	
0001 WXID 94.7 KY Mayfield, over KSHE	
0007 KMAL 92.7 MO Malden	
0801 WRAJ 92.7 IL Anno	
6 Tr	
0301 WGKY 95.9 KY Wickliffe	
7 Tr	
0040 WSDM 97.7 IN Brazil, Wisdom 98	
0101 WFPC 102.3 IN Petersburg	
0653 WCBW 104.9 IL Columbia	
8 Tr	
0021 WTNV 104.1 TN Jackson	
0501 WREZ 105.5 IL Metropolis	
9 Tr	
0437 KBEQ 104.3 MO Kansas City	
0501 KDBB 104.3 MO Bonne Terre	
0530 KLTH 99.7 MO Kansas City	
10 Tr	
0201 WKDF 103.3 TN Nashville, KLOU off	
0315 WGBF 103.1 KY Henderson	
11 Tr	
0236 WSOY 102.9 IL Decatur, over KEZS0501	
KMXV 93.3 MO Kansas City, Mix 93, over WJLY	
13 Tr	
0001 WBLZ 106.1 IN Mt. Vernon, Z106.7 FM	
0203 WCNL 95.9 IL Carlinville	
0502 WTAY 101.7 IL Robinson	
1122 KTXR 101.3 MO Springfield	
1401 WACF 98.5 IL Paris	
2058 WRKV 104.1 IL Leroy	
14 Tr	
0513 WEBQ 102.3 IL El Dorado	

I want to correct what I previously reported, that the Lafayette 3030 is off 100 to 200 khz. I hooked up my SCS adapter to the 3030, which works on 67 khz and I found out that KEZS Cape Girardeau, Mo. has switched from the talking book to music. KBDZ 93.1 Perryville has music. KSD and WIL have the same music. My adapter is called the Super Soother, which is more sensitive and more rejection than normal adapter. KFUA has dropped their 67khz lightrock unless they're on 92 khz. WMIX Mt. Vernon Illinois is now getting their music from a satellite, instead of their obsolete tape machines, which kept breaking down. All DX reported is new. Heard an WSBC on 102.1. FCC says that there is a WSBC on 1240 khz in Chicago. (This is not a Chicago station, the 102.1 that is. Perhaps someone new is on the air, with similar sounding calls. WSDC, etc. Send this along to CCI uniD aids-maybe someone has the answer to this-gc). Equipment the same as in previous VUDs.

STATION NEWS: There has been a frequency swap in Kitchener, Ontario. The CKGL country format goes to 570 khz, while 96.7 becomes CHYM, "96.7 Chime FM", and upbeat a/c. 107.7 Wethersfield-Buffalo is now WNUC, and Unistar Hot Country. CKEY 101.1 Fort Erie seems to be dropping adult standards for a more contemporary a/c sound, although you will still hear some big bands once in awhile. New slogan: "Key FM 101.1". In Coastal North Carolina, WKJE 104.9, WKJA 101.1, and WYND 97.1/5 were not on. WTKF 107.3 Atlantic, NC is on, monophonic, and talk radio // WBTV 1400. WHOV Hampton, VA is now on 88.1. WESQ 90.9 Rocky Mount, NC is on with mostly jc, and a limited schedule. WXGM 99.1 Gloucester, Va. is on the air with a/c, "Extra 99". WPTG 107.9 West Point, Va. is on the air, also a/c, "107.9 Sunny FM". WVES 99.3 Accomac, Va is now country "All the Time 99". WBYW 88.9 Grand Rapids is now run as an on air broadcasting school... "students" can go on air and play their music for a price. 96.5 Portage, Mi. is now WFAT, satellite oldies. 101.7 Muskegon Hts, Mich. is now being rented out by WSNX. Some WSNX jocks and apparently their relatives and friends do shows on WMRR 101.7 now, playing mostly album cuts and top 40 music, sounding like a high school station. Thanks Mark Strickert for some information.

BOB SMOLAREK - 31 MARK DRIVE - HIGH BRIDGE, NEW JERSEY 08829

Equipment: Mc Intosh MR78, Carver TX-11, Stereo Probe 9

DX at old location:

JUNE 1992 DX

- 10 Tr
- 2000 WXIN 105.9 DE Lewes, k, new stn
- 2152 WMIJ 106.5 MD Pocomoke City, new
- 13 Es
- 1936 WQLM 92.9 FL Punta Gorda, rm
- 1938 WOLZ 95.3 FL Ft. Myers, o
- 1958 WOZN 98.7 FL Key West, rp
- 1959 WGUJ 92.7 FL Marco, b
- 2006 WRTQ 98.3 FL Goulds, Spanish
- 2016 KZOC 92.9 KS Osage City, k
- 2022 KCMO 94.9 MO Kansas City, o
- 2025 KHUM 95.7 KS Ottawa, o
- 2046 WGYL 93.7 FL Vero Beach, b
- 2048 WKRY 93.5 FL Key West, jazz show
- 2055 WNGS 92.1 FL W. Palm Beach, jazz
- 2100 WGMX 94.3 FL Marathon, r
- 2131 WOYS 100.9 FL Apalachicola, rm

17 Tr + Es

- 0627 WFOG 88.7 VA Chesapeake, c
- 0648 WHRO 90.3 VA Norfolk, c
- 0649 WYFJ 100.1 VA Ashland, g
- 0650 WCVE 88.9 VA Richmond, c
- 1820 KNID 96.9 OK Enid, k
- 1823 KSPI 93.7 OK Stillwater, k
- 1826 KRAV 96.5 OK Tulsa, r
- 1828 KXLS 99.7 OK Alva, r
- 1830 KOSU 91.7 OK Stillwater, NPR
- 1833 KVOO 98.5 OK Tulsa, k
- 1834 KYIS 98.9 OK Oklahoma City, r, Kiss FM 99
- 1846 KFXI 92.1 TX Marlow, k
- 1852 KNIN 92.9 TX Wichita Falls, r
- 1858 KETR 88.9 TX Commerce, r
- 2240 WPTG 107.9 VA West Point, rm
- 2321 WSBY 98.9 MD Salisbury, o

JULY 1992 DX

3 Tr

- 0010 WKOC 93.7 NC Elizabeth City, rp
- 0800 WOTI 90.7 NC Morehead City, g
- 0900 WTKF 107.3 NC Atlantic, talk, #1000 heard, Gred, you predicted it would be a good one! (Congratulations Bob! Yeah that is a good one-they do not seem to get out well at all-gc)
- 0938 WNHW 92.5 NC Nags Head, k
- 0945 WIKS 101.9 NC New Bern, s
- 0955 WSFL 106.5 NC New Bern, rp
- 0957 WDLX 93.3 NC Washington, r

11 Tr

- 1140 WZBG 97.3 CT Litchfield, r
- From new home, 8 miles to the west of old location, 580 feet high, facing west, blockage to the east.



As you can see, there were a couple of great tropo days at the end of August. Strange to hear WZNS and WRFX twice in one year!

JULY 28 Tr

- 2050 WBMR 91.7 PA Telford, g
- 2100 WBYO 88.9 PA Sellersville, simulcasts WRDV 89.3
- 2128 W249AT 97.7 PA Reading, jazz, WRTI translator
- 2200 WQCM 96.7 MD Halfway, rp
- 29 GW
- 1800 W289AA 105.7 NJ Lebanon Twp, c local translator of WWFM 89.1, kills the frequency

AUGUST 1992 DX

22 Tr

- 2300 CKGLt 96.7 ON Kitchener, Blue Jays play by play heard // CHML 900 AM
- 2340 WFTR 95.3 VA Fort Royal, talknet with Harvey Reuben
- 2345 WKTC 96.9 NC Golsboro, KT country

23 Tr

- 0119 WDCK 96.5 VA Williamsburg, o, the Duck
- 0835 WZZU 93.9 NC Burlington, op
- 0845 WPVR 94.9 VA Roanoke, rm, very good signal!
- 0847 WSLO 99.1 VA Roanoke, r, Q99
- 0853 WXLK 92.3 VA Roanoke, r, K92
- 0900 (WQMR) 107.1 MD Federalsburg
- 0946 WVTE 89.1 VA Roanoke, c
- 0949 WMOX 93.1 NC Winston-Salem, o
- 0954 (WBT) 107.9 NC Charlotte, new mode
- 0956 WSFL 106.5 NC New Bern, rp
- 1010 WZNS 92.9 SC Dillon, rp
- 1017 WRFX 99.7 NC Kannapolis, rp
- 1050 WKSI 98.7 NC Greensboro, r
- 1200 WKYE 95.5 PA Johnstown, over WPLJ & WPGC, r

- 2035 WYSN 101.7 PA Central City, m
- 2058 WTNI 105.9 WV Mount Hope, g
- 2101 WOEL 89.9 MD Elkton, g
- 2102 WROG 102.9 MD Cumberland, k
- 2112 WKGQ 106.1 MD Cumberland, r, Go106

- 2117 WHA1 104.5 WV Bluefield, r, J104
- 2138 WVOD 99.1 NC Manteo, j
- 2158 WOMU 103.1 PA Indiana
- 2258 WCUL 103.1 VA Culepeper, k
- 2300 WRVS 89.9 NC Elizabeth City, ex90.7

24 Tr

- 0640 WKWI 101.7 VA Kilmarnock
- 0641 WTVR 98.1 VA Richmond, b
- 0643 WRVQ 94.5 VA Richmond, r over WCHR!
- 0645 WKOD 94.1 VA Yorktown, rp
- 0650 WPLZ 99.3 VA Petersburg, s
- 0657 WDYL 92.1 VA Chester, g
- 2000 WJFK 106.7 VA Manassas, rp
- 2015 WGAY 99.5 DC Washington, rm

27 Tr

- 2100 WUSO 102.5 VA Winchester, k, WRFY off the air

DAVE NIEMAN-12284 NICE ROAD-AKRON, NEW YORK 14001-9529

Equipment: Carver TX-11 tuner IF filter modified. Channel Master Stereo Probe 9 at 36 feet on crankup tower, Channel Master 3617B VHF at 23 feet into phase box. Alliance HD-73 rotor and RG-11 coax.

New loggings are underlined. New call {K K K K}. New propagation mode WWW.

JULY 1992 DX

- 29 tropo
- 1432 WKKY 104.9 OH Geneva, call, k\$ 147
- WDDN moved
- 31 Meteoroscatter
- 0900 WYFI 99.7 VA Norfolk, call, \$ 452
- prev. aurora

AUGUST 1992 DX

- 21 tropo
- 1209 WPOX 104.9 WV Clarksburg, call, k\$ 271
- 23 tropo
- 2358 WCMS 100.5 VA Norfolk, ID, k\$ 452



I missed the super tropo on 8/23 at home but caught it in southern New York. Dave

DAVE NIEMAN-HO STA GEH. ROAD-ROCK CITY, NEW YORK

Equipment: Technics ST-8080 tuner IF filter modified. Antennacraft FM-10 at 20 feet, RG-6 coax and Radio Shack rotor.

New loggings are underlined. New call {K K K K}. New propagation mode WWW.

AUGUST 1992 DX

- 22 tropo
- 0920 WGRG 101.7 NY Owego, call, o\$ 114
- 1000 WNCE 101.3 PA Lancaster, ID+ "Nice & Easy", m\$ 177
- 1317 WAFX 106.9 VA Suffolk, "106.9-Virginia's Fox", op\$ 380
- 1410 WSKE 104.3 PA Everett, call, k\$ 138
- 1437 WMGM 103.7 NJ Atlantic City, "Sunny-103.7", r\$ 280
- 1520 WOTI 90.7 NC Morehead City, ID, g\$ 513
- 1607 WRAR 105.5 VA Tappahannock, call, rm\$ 295
- 2155 WYJI 90.5 VA Fredericksburg, ID, g\$ 262
- 23 tropo
- 0725 WWDE 101.3 VA Hampton, "2WD", r\$ 363

23 tropo continued

- 0738 WCMS 100.5 VA Norfolk, call, k\$ 388
- 0757 WVES 99.3 VA Accomac, "Hot-Country" + call, k\$ 332
- 0800 WVOD 99.1 NC Manteo, ID, Sunday Morning classics, c\$ 448
- 0811 WNOR 98.7 VA Norfolk, call, rp\$ 388
- 1029 WQDR 94.7 NC Raleigh, call, k\$ 431
- 1300 WJAZ 91.7 PA Summerdale, ID+ "Jazz-90", j\$ 143
- 1442 WYSP 94.1 PA Philadelphia, call, Eagles football \$ 226

30 tropo

- 0853 WMKX 95.9 PA Brookville, "Magic-96" \$ 68



Wish I wasn't so beat and stayed up all night on the 22nd. I was awake early on Sunday and the tropo was going super strong. Dave

BRUCE ELVING - P.O. BOX 836 - ESKO, MINNESOTA 55733-0386

Here is my DX in the last two months: WRWA *88.7 Dothan AL, stereo, 6-13 ES: KEOM *88.5 Mesquite TX, 6-14: KJAK 92.7 Slaton TX, 6-16, plus a bunch reheard, including KUHF Houston now on *88.7 instead of 91.3 where I first heard it in 1951. WWIS-FM 99.7 Black River Falls WI was the first new station received, 6-30, after installing a new antenna on a tower at 13 meters, and recent tropo brought in WLLT 107.7 Polo IL 8-9-92. That morning I also reheard WTHI-FM 99.9 Terre Haute IN and WJVL 99.9 Janesville WI, coming through nearby WCDK 99.9 Virginia MN, without the benefit of phasing. Also got KEZT (formerly heard as KLFM) 104.1 Ames IA, smashing through nearby KJJO-FM 104.1 St. Louis Park MN, again with no phasing with no phasing in use. I question some of the reports in the August VUD attributing so much of the DX to phasing. If conditions are favorable, much of that DX would have come through anyway! DXers seem to forget that good old tropo has an amazing propensity to smash through strong nearby (even local) stations when conditions are right. We should be cautious about claiming for phasing DX which might have been received without the technique. Try testing nonphased reception of a DX station versus phased reception by disconnecting the main antenna lead from the phase box and plugging it directly into the receiver. This should be possible on a well-designed system, but not always feasible during a frenzied DX session when you have to keep track of several frequencies at once. 73ily, Bruce

STATION NEWS: 93.3 Killeen-Austin has changed calls to KMXX-it has had the "Mix 93.3" slogan for awhile now. Howard Stern's morning show now is also simulcast on KEGL in Dallas, and WNCX in Cleveland. In Los Angeles, KXEZ 98.7 is now upbeat a/c, "Star". 106.9 Conroe-Houston is going to pick up the "Z-Rock" format and ask for the calls KRZR. In Kansas City, KBEQ 104.3 is dropping its modern rock at night programming.

RALPH STROBEL - 106 E. DAVIDSON STREET - MUNCIE, INDIANA 47303

Equipment: McIntosh MR-78 FM Tuner with two CM Stereo Probe 9 antennas and rotors at 38 and 36 feet above ground with Bolin phase box. *Made possible w/use of box.

July 1992	26 tr (Aug cont'd)		
21 Es	0200*WSSD 88.1 IL Chicago, j, 10w	165	
1635 KWBI 91.1 CO Morrison, g\$	(o/WQRP 88.1 OH West Carrollton)	70	
1747 KCWC 88.1 WY Riverton, wx \$	31 tr		
26 MS	2200*WCKP 101.3 KY Shelbyville, k\$,	136	
0552 KOSI 101.1 CO Denver	"Thunder-101"		
28 tr	(o/WFMG 101.3 IN Richmond)	35	
0200 WEZV 95.3 IN Brookston-	September 1992		
(See note #1) Lafayette, mr\$	2 tr		
August 1992	0450 WSSD 88.1 IL Chicago, again!	165	
2 tr	4 tr		
???? WRR 101.1 TX Dallas-Fort Worth	2001*KLXP 93.1 MN New Ulm-Mankato,	545	
8 tr	(o/WKLR 93.1 IN Indy) r\$	50	
2205*KTBS 93.9 IA Sioux Center, ad\$	2016*KOEL 92.3 IA Oelwein, k\$, SID,	413	
(o/WLIT 93.9 IL Chicago)	"92-Country"		
2300*KPLO 94.5 SD Reliance-	(o/WYCA 92.3 IN Hammond)	148	
Chamberlain-Pierre-Winner, k\$	2029*WAPL 105.7 WI Appleton, r\$	322	
(o/WLRW 94.5 IL Champaign)	(o/WTLC 105.7 IN Indy)	57	
9 tr	2049*KDWB 101.3 MN Richfield, r\$	510	
0025*KLAI 93.9 IA Mason City, k\$,	(o/WFMG 101.3 IN Richmond)	35	
(o/WLIT 93.9 IL Chicago) "93.9-KIA"	2056*WPKR 99.5 WI Omro-Appleton-	294	
0100*KLJC 88.5 MO Kansas City, wx \$	(o/WEPL 99.5 IN Indy) Oshkosh, k\$	50	
Previous MS	2100 WPPP 90.5 WI Sturgeon Bay-	337	
(o/WMUB 88.5 OH Oxford)	Green Bay, g\$		
0300*KLQL 101.1 MN Luverne-	2100 KUNI 90.9 IA Cedar Falls-Water-	401	
Worthington, "K-101," k\$,	100-Cedar Rapids-IA City-Dubuque-Quad		
(o/WKQX 101.1 IL Chicago) Previous MS	2154 WUSW 96.9 WI Oshkosh- k\$,	311	
0431*KISD 98.7 MN Pipestone, r\$,	ex-96.7 Appleton, "US-96"		
(o/WFMT 98.7 IL Chicago) Prev. Es	2232 KTCZt 97.1 MN Mpls-St Paul,	518	
0500*KESD 88.3 SD Brookings, c\$,	"Cities-97"		
(o/WLAB 88.3 IN Fort Wayne)	2252 KLSS 106.1 IA Mason City, r\$	453	
0527 KTPR 91.1 IA Fort Dodge, j\$,	2300 KTIS 98.5 MN Mpls-St Paul, g\$	518	
Previous Es	2310 WAXX 104.5 WI Eau Claire, k\$	447	
0600 KNOW 91.1 MN Mpls-St Paul, t	2325*WGLQ 97.1 MI Escanaba, r\$	394	
0700*WCAL 89.3 MN Northfield, wx \$	(o/WESN 97.1 IN Shelbyville-Indy)	51	
(o/WVXR 89.3 OH New Paris)	2350*WCMW 94.7 MI Gulliver, k\$	411	
11 MS	(o/WFBQ 94.7 IN Indy)	50	
0649 KCRB 88.5 MN Bemidji-Gd Rapids	5 tr		
???? unID 88.5 ?? KTCN ?	0000*WJNR 101.5 MI Iron Mountain,	412	
???? WHCF 88.5 ME Bangor,	r\$, s/off		
Previous Es	(o/WNSN 101.5 IN South Bend)	113	
12 tr	0028 KEEY 102.1 MN St Paul-Mpls, k\$	514	
0000 WJSO 88.5 KY Pikeville, g\$,	0106 WQMT 107.5 MI Ishpeming, r\$	451	
(See note #2) new frequency?	0116 WAIR 92.5 MI Atlanta-Petoskey-	339	
12 MS	"W-air"		
???? KDCR 88.5 IA Sioux Center,	0159*KSJN 99.5 MN Mpls-St Paul, c\$	518	
Previous tr	(o/WZPL 99.5 IN Greenfield-Indy)	50	
(WMUB 88.5 OH Oxford, off air)	0253*WKKC 102.9 MI St. Ignace-	394	
16 MS	Petoskey, k\$		
???? WRR 101.1 TX Dallas	(o/WIQB 102.9 MI Ann Arbor)	169	
17 tr	0403 WVLT107.5 WI South Highland-	???	
0200 WBLZ 106.7 IN Mount Vernon-	(See note #3) Eau Claire ??		
"Z-106.7" Evansville, r\$	0500 WTRV 94.3 MI Leland-Traverse	334	
(All times are CDT here in the summer)	//WAIR 92.5 City, o\$		

Meteor Scatter Results:

7/26 KOSI "...KOSI Denver's Cozy-101 always just the right mix of today's new hits and yesterday's favorites..."	8/11 WHCF "...Canadian dollar is trading at 84 cents to the US dollar. This is Glen Ray at Means Investive Company in Bangor..."
8/2 WRR "...This is WRR..."	8/12 KDCR "...degrees. Currently here in Sioux Center..."
8/11 KCRB "...You're listening to KCRB 88.5 FM Bemidji-Grand Rapids..." unID "...This is KTCN..."	8/16 WRR "...WRR top 40 classical countdown..."

Note #1 - WEZV moved tower and changed city of license, so is countable according to WTPDA regulations. Note #2 - A WJSO ID was heard on 88.5! Who is this? I wrote WJSO and am waiting for an answer. Note #3 - Something new in WI? Anyone know?

73-Ralph

BITT NienajadTy PO Box 2999 Clifton NJ 07015-2999 N2QJJ

Equipment: Pioneer TX-9800 modified. Fisher FM 660 modified with the McVey IF Circuit board GM Delco Modified AM/FM Digital radio, GE Superadio modified. Two Radio Shack 6 element FM only antennas on two separate rotors. Bolin phase box and other items, splitters, attenuators.

July 2, 1992 Tropo	August 12, 1992 MS-Perseids
2300*WKOC 93.7 NC Elizabeth City	1858 WAPW 99.7 GA Atlanta 45 sec burst ID & song
Norfolk FM's	748
July 3, 1992 Super Tropo	August 15, 1992 MS
0113 WNET 107.9 NC Greenville	1352 WMC 99.7 TN Memphis "FM-100"
0123 WDLX 93.3 NC Washington PH/O WMMR @ 82 mi	1900 WMTS 99.7 WI Black River Falls wx & ID
0125 WKOD 94.1 VA Yorktown PH/O WYSP @ 82 mi	884
// to WKOC Eliz City	August 22, 1992 SUPER TROPO
0149 WMYJ 106.5 MD Pocomoke City PH/O WMMX @ 174	2145+WWSL 106.5 NC New Bern
0155 WWSX 107.7 ?? ??	WNET 107.9 NC Greenville
0611 WWTJ 103.3 NC Newport weak!!	WEXB 100.1 NC Edenton
0640 WSPF 106.5 NC New Bern	2210 WRSF 105.7 NC Columbia
0645 WNNH 92.5 NC Nags Head PH/O WXTU @ 82 mi	2310 WACT 96.9 NC Goldsboro PH/O WFGP @106 mi SB!
0645 WRSF 105.7 NC Columbia	2316 WNNH 92.5 NC Nags Head PH/O WXTU
0700 WDBR 95.3 NC Wachese	349
0701 WDBX 100.1 NC Edenton PH/O WDRZ @ 82 mi SB!	August 23, 1992 SUPER TROPO!
0704 WMYK 92.1 NC Myock PH/O WJLT @108 mi SB!	0859 WPIR 94.9 VA Roanoke rare path tropo!
// to 96.1 Cape Charles VA	2020 WNNH 92.5 NC Nags Head o/WXTU No Phasing!
0724 WRSF pinging meter also WDBR just about	2100 WJOD 99.1 NC Manteo (first PH/O WAWZ @ only 34 mi
0833 WDRB 90.3 VA Norfolk PH/O many lcl pests	- at the Same Bearing! few minutes
July 7, 1992 ES	Tater o/WAWZ WITHOUT PHASING!
1400 WQVA 88.9 MS Senatobia	2115 WFRB 105.3 MD Frostburg long wanted- weak!
1407 KTTT 93.7 LA Shreveport	2152 WKOC 93.7 NC Elizabeth City
July 12, 1992 GW New Station on the air	2207 WRSF 105.7 NC Columbia very strong! 80 db !
0939 WZBG 97.3 CT Litchfield very weak here	2230 Norfolk VA FM's way up, very strong
July 22, 1992 ES	2256 WAFX 106.9 VA Suffolk PH/O WJOD @ 83 mi SB!
1211 WMAU 88.9 MS Bude	2352(WJLT) 94.9 VA Norfolk ex WNRN
July 28, 1992 ES	313
1032 KTGJ 92.9 NE Beatrice "The eagle"	August 24, 1992 SUPER TROPO Continued! 3 Days of it
1041 KFKF 94.1 KS Kansas City	0640 Most Norfolk FM's in with/without Phasing o/Philly
1043 KSJQ 92.7 MD Savannah (took out WORE !)	0700 WSVS 104.7 VA Crews long wanted
1058 KJCK 94.5 KS Manhattan lcl merits	0717 WESR 103.3 VA Onley
1107 KKF1 90.1 MD Kansas City "All proceeds go to KCF1"	0734 WVES 99.3 VA Aconack
	0747 WKOD 94.1 VA Yorktown PH/O WYSP
1115 Approx fadeouts-----	// w/93.7 WKOC Eliz City NC
August 3, 1992 Tropo	0750 WMYA 96.1 VA Cape Charles 92.1/96.1 ID
2150 WWSX 107.9 MA Boston o/WEBE	1030+In the Car on modified Delco car radio in Passaic
2220 WJLO 104.5 MA Fitchburg	WVES 99.3, WRSF 105.7 plus many others full quieting
2258 WCGY 93.7 MA Lawrence rare o/WNYZ!	1300 At Seaside Heights NJ-Heard 103.3 WESR o/WPRB
2300 WLYT 92.5 MA Haverhill rare o/Hartford	Oldies 103.1-Freeland PA? Scranton PA FM's also
2300+Other Boston's OK but starting to lose strength.	WMS at times o/WNYZ 103.5, Didn't have time to DX.
I had phone off the hook by accident, missed phone tip	2200 Leaving Seaside NJ- Norfolk VA very strong near
about Maine coming in on 99.3 by Paul Mount. @96.3!	the Beach area. WQMS 100.5 like a local.
	2330 Around Clifton QTH-Nothing exciting going on,
	-for TV and FM. 3 Day SUPERTROPO SESSION ABOUT OVER
	PH/O Phased over SB Same Bearing @ at

Well, so 1992 sucked for E-Skip, but certainly not for tropo. Gee I lost count on how many times we have heard the NC area, Five or Six times I guess. Despite the amount of NC FM stations reported this year, North Carolina is not common on DX here, neither is Norfolk VA. NC might come in only once or twice a year at best, not six times!

At Joe Fela's house on August 22, there was a DX get together with Bob Smolarek, Paul Mount, Steve West, Neil Kazanoss, Leo Gluc and Dave Schmidt (NRC musings editor) and his son, and me too. The DX was just simply amazing there! With a bunch of Divers from the NRC and the WTPDA, DX appeared in rare form. Joe had CFMK 103.1, CKQT 94.9, CJKY 95.3 and others from Ontario on tropo, along with WPRV 94.9 Roanoke VA, WJNC ch 36 from Charlotte NC appeared at 6:00 PM in the AFTERNOON!, some of the good stuff was during the day-broad daylight! Joe later had stuff on FM and TV from Western PA, not to mention South Carolina on FM too. Hah, who says DX don't happen during a DX get together?!? Note the widespread areas involved, surely DX like this approaches "Thanksgiving 86" status.

I'm starting to hear of some of the incredible loggings during this Super Tropo period, just simply amazing to say the least! Bob Smolarek said he had West Virginia, and the guys in Delaware had stuff like Rochester NY and Ontario FM's!

On other things, I've edited a lot of my loggings just to better catches only. About the Perseids, well I must have listened for some 20 plus hours over the course of four days or so and all I logged were just the three listed above. It seems that the December Meteor showers are much more productive than the Perseids. Maybe the Perseids were better when I was at work.

Well lets hope for a good fall tropo season for all. I still need Maine on FM, I keep trying for 102.9 from Portland, though i could phase out WDRB (same bearing as Portland), still nver heard them yet. I know 90.1 could be a chance but I have WJSB from Stony Brook Long Island and Philly off the back to contend with. Goodxing!

JOSEPH FELA - 150 ROBERT PLACE - SO. PLAINFIELD, N.J. - 07080

Equipment - McIntosh MR-78 tuner/stacked Stereo Probe 9s + a single Stereo Probe 9, on rotors, at 40 ft., Bolin phase box.

Time: ELT

JULY 1992		AUGUST 1992	
03 Tr		03 Tr	
0038 WDLX	93.3 NC Washington, call, lite r	2143 WMJX	106.7 MA Boston, ID, clear with WLTW phased. 211
0049 WNHX	92.5 NC Nags Head, "Carolina 92" + call, k	2153 WCDJ	96.9 MA Boston, noted using call letters 211
0102 WRHT	96.3 NC Morehead City, ID, r, WQXR phased	2159 WSSH	99.5 MA Lowell, "Boston's Wish", call noted at 1013, WBAI phased 218
0611{WKQT}	103.3 NC Newport, "Cat 103.3" wx, ads, r, ex: WZYC	2334 WXLO	104.5 MA Fitchburg, "Best Mix", call, o 194
0624 WFOS	88.7 VA Chesapeake, ID, c	06 Es	
07 Es		1050 WKNA	89.9 MS Senatobia, call, believe on NPR, last heard as WJNC-90.1 997
2000 KKZN	93.7 LA New Iberia, "South LA's rock'n roll station, Z-93.7"	1101 WMAO	90.9 MS Greenwood, wx, local ID, extremely low modulation level. 1019
2009 WBSN	89.1 LA New Orleans, ID, g	1115 KETR	88.9 TX Commerce, promo 1290
2032 WBLX	92.9 AL Mobile "93 BLX", rap	1116 WSMS	91.7 TN Memphis, call, request line number 928
23 GW		1150 KVTT	91.7 TX Dallas, call, g 1352
Local WYNY-103.5 off the air:		08 Tr	
2312 WKAB	103.5 PA Berwick, ad, call, o	0402{WRCY}	107.7 VA Warrenton, "Thunder 107.7, k Ex: WEER/WWW/WMJR 220
25 Tr		0556 WJAZ	91.7 PA Summerdale, // to WRTI-90.1 137
0154 WLCH	91.3 PA Lancaster, s/off	0617 WTRM	91.3 VA Winchester, g, k, and address where the \$\$\$ should be sent. 220
0739 WZ49AT	97.7 PA Reading, // to WRTI-90.1 79	0809 WKGB	92.5 PA Susquehanna, "KGB-FM", r 116
28 Es		21 Tr	
1020 KJJY	92.5 IA Ankeny, call, k	2301 WROG	102.9 MD Cumberland, legal ID, G-103, k, WMGK phased 246
1029 KXCV	90.5 MO Maryville, beginning EBS test	2331 WOTJ	90.7 NC Morehead City, g, ID 424
1045 KNIM	99.3 MO Maryville, ad, wx	2353 WRNS	95.1 NC Kinston, call, k 410
1054 KEOK	95.3 IA Keokuk, Cardinal promo, "K Country in Keokuk" 892	2355 WCUL	103.1 VA Culpeper, ID, k 239
1105 KCLY	100.9 KS Clay Center, ads	22 Tr	
1118{KHUM}	95.7 KS Ottawa, "96-Hum", Lawrence ads, mentioned change coming 8/3 at 0600 and has since changed calls. Ex: KOFO 1127	0040 WFLS	93.3 VA Fredericksburg, ID, wx, k 225
1135{KHCA}	95.3 KS Wamego, "FM95" + call, g, ex: KSKT 1089	1300-2300	A DX get together here complete with DX, including WZNS-92.9 SC, WDLX-93.3 NC, WPVR-94.9 VA, CKQT-94.9 ON, WKML-95.7 NC, WDCK-96.5 VA, CHTZ-97.7 ON, WTVR-98.1 VA, WQSM-98.1 NC, WANV-99.7 VA, WROG-102.9 MD, CFMX-103.1 ON, WCUL-103.1 VA, WFRB-105.3 MD, WRDU-106.1 NC, WNCT-107.9 NC plus most Norfolks including WAFX-106.9 for a call change.
1137 KJTY	88.1 KS Topeka, "Joy" 1132	1106 WKTC	96.9 NC Goldsboro, "KT Country", k 411
1142 KBBE	96.7 KS McPherson, ID w/AM 1249	1126 WEQR	102.3 NC Goldsboro, call 409
1145 KLCJ	88.5 MO Kansas City, ID, g 1074		More next month.....73, Joe
1215 KOEZT	92.3 KS Newton, "K-0 Easy" 1259		
1225 KHCC	90.1 KS Hutchinson, c, "Radio Kansas", looking for \$\$\$		
28 GW/Tr			
1439 WZBG	97.3 CT Litchfield, call, programming to Torrington 106		
30 Tr			
2202{WKTU}	98.3 NJ Ocean City, legal ID, "Kool 98.3", o, 8 mile distant WMGQ phased to get this one. Ex: WDVR 96		
2224{WQMR}	107.1 MD Federalburg, "Classic 107.1" + call, o, ex: WCTD 144		

STATION NEWS: KACE 103.9 in Southern California is still urban, but now is using a "V103.9" slogan. KIKX 102.7 Manitou Springs, Colorado is reportedly going to a more top 40-modern rock approach. WXJN 105.9 Lewes, De. is on the air with country "Kicks 106". W289AA 105.7 Lebanon Twp. NJ is on the air, relaying WFFM 89.1. Thanks Bob Smolarek for some info.



ROGER WINSOR - 706 LONGRUN - VALPARAISO, INDIANA 46383 (219) 759-3131

Equipment: Fisher 500TX using a hand held dipole

JULY 1992 DX		AUGUST 1992 DX	
03 Tr		03 Tr	
0515 up	and early and caught WXXR Port Clinton, OH X 94 1/2 plus ads	0715 KCLD	104.7 MN St. Cloud, calls sung, rr mx
0535 WLZZ	104.5 OH Montpelier, k\$, CIs, full \$	0718 KOQL	107.9 MN Anoka, Twin Cities Today on Cool 108
0600 WTTT	103.7 OH Tiffin, full AM-FM ID out of a farm program	0740 KOIC	102.5 MN Willmar, Q102 and ads
0610 WZOE	98.1 IN Princeton, local announcement ex: 98.3	0800 KCGN	101.5 MN Ortonville, full ID, USA mx
0625 WFAT	96.5 MI Portage, with new WFAT news, oldies in stereo	0803 WWJW	98.1 MN St. Cloud, Country 98, same ads as on KCLD earlier
30 Tr		0810 KNST	88.9 MN Collegeville, MN weather 9 Tr
0625 WNDH	103.1 OH Napoleon, taking calls, a most wanted one! No WHME at all	0615 WZNX	107.9 IL Arcola, Z95 + Z108 weather
0628 WZOM	105.9 OH Defiance, Z106, wx, rr music in CKG null. Yesssss	0617 WLKI	100.3 IN Angola, ID, ex 100.1 WPNT is strong here too
		0620 WHZT	105.9 IL Mahomet, The Heat, WHZT
		0700 WBNH	88.5 IL Pekin, full ID into USA rdo nx

All station new, total 1081 and rising. I am impressed with the Fisher. Very good all the way to 107.9. I now receive WMRS 107.7 daily in WRKR null. Both used to be in only when conditions were enhanced. If anyone would happen to be in my area and knows about antenna installation, give me a call on weekends or after 10P daily. 73 de Rog.

GREG CONIGLIO - 5100 GLENWOOD DRIVE - WILLIAMSVILLE, NEW YORK 14221

Equipment: see previous VUDs

AUGUST 1992 DX		AUGUST 23 Tr cont	
11 MS		2141 WWDL	104.9 PA Scranton, rare, rm\$ 189
1500 KESD	88.3 SD Brookings, and 910	2200 WPRR	100.1 PA Altoona, good w/Top 40 172
WHWC	88.3 WI Meonmie, both heard with network IDs in this long 1:49 burst!	2200 WLWV	105.5 MD Salisbury, legal ID with Ocean City, a surprise! 358
1510 WHIK	99.7 SC Port Royal, promo with calls & freq, another long burst, finally, seems almost everyone has heard this one! 740	2330 WCMIS	100.5 VA Norfolk, bluegrass\$ 450
1615 WYFI	99.7 VA Norfolk, BBN program 441	2357 WKXW	101.5 NJ Trenton, NJ 101.5 279
1624 CRO	99.7 PQ Ste-George-de-Beauce, FF, country music heard, antenna NE	24 Tr	
1625 WKSD	99.7 OH Paulding, calls only 329	0001 WNNI	100.9 VA Warsaw, calls 362
22 Super Tr		0010 WDLX	93.3 NC Washington, calls, in clear after WWSE went off, r\$ 521
2317 WQHO	104.7 MD Ocean City, rm\$, Q105 373	0011 WRAR	105.5 VA Tappahannock, calls, rm\$ 362
2320 WYEL	99.7 VA Norfolk, g\$, strong, my first "triple" heard via Au, MS, now Tr 441	0655 WAVR	102.3 NY Waverly, rm\$, rare 112
2330 WOTJ	90.7 NC Morehead City, g\$, calls wow!, not a very easy path to there! 577	28 GW	
2345 WRGX	107.3 DC Washington, r\$, M1x 107.3, very good signal 290	2200 W---	102.7 NY Webster, on the air testing with WNYR 98.5 NY relay 65
2348 WYQD	99.1 NC Manteo, rm\$, weather for Outer Banks, legal, wow, I was just there! 510	30 Tr S	WUFX 103.3 off the air
2350 WKYS	93.9 DC Washington, rs\$ o/WACZ 290	1125 CKLP	103.3 ON Parry Sound, rm\$ 178
23 Tr			A real pest considering distances & power Heard tentative WPRB and WMXW (needed) no IDs
0000 WHUR	96.3 DC Washington, s\$, legal ID over phased CFMX1, leaves only WGAY in DC 287	31 GW	
0001 WVES	99.3 VA Accomac, k\$, legal ID with Parksley, "All the Time 99" 397	1200{WNUC}	107.7 NY Wethersfield, k\$, Unistar Hot Country, Country 107.7 ex: WEZQ, WBMW, WBYR, and WUWU. 32
0010 WSGD	94.3 PA Carbondale, o\$ 94-3 SGD heard coming in over WLWY Elmire 189	SEPTEMBER 1992 DX	
0051 WVOD	99.1 back in, very strong! 510	5 GW	
0055 WBNJ	105.5 NJ Cape May Courthouse, very weak with Joy 105.5 337	1705{CHYM}	96.7 ON Kitchener, rm\$, 96.7 Chime FM, ex: CKGL, which is now on 570 96
0114 WAEX	106.9 VA Suffolk, The Fox, op\$ Coming in very strong the next AM 445	13 Tr	
1340 WNHV	92.5 NC Nags Head, k\$ syndication Carolina 92, 2 mi. from where we stayed! 504	2100 WSIU	91.9 IL Carbondale, legal ID over CFLZ, weak. Also heard via Es 663
1750 WHOT	103.9 PA Muncy, r 157	14 Tr	
1812 WINC	92.5 VA Winchester, r\$, Wink 264	0720 WRSW	107.3 IN Warsaw, strong, r\$ 387
2115 WMMG	103.7 NJ Atlantic City, rm\$ 334	0723 WLNE	102.7 IN Ligonier, ads, M1x 102.7 360
2117 WVES	99.3 VA Accomac, in strong again, k\$		Finally some nice tropo. Was really weird to get Eastern North Carolina here for the first time, just hours after returning from there! There was tropo down there too: see SFM & ETV. It was nice seeing all of you at Pittsburgh. I was disappointed however, that the host did not show up and hence there was no convention activity. We all were very curious as to what happen.

KNIFE EDGE REFRACTION

FRANK ADEN, JR., N7SOK

Over the mountain UHF DX is possible with the right conditions!

Most experienced TV and FM DXers are familiar with most of the common forms of TV DX propagation, Sporadic E-skip (Es), Tropospheric (trops), Meteor Skip (MS), Aurora Skip (AU) and even the rare F-2.

Another form of TV DX exists that many veteran TV DXer have never seen. That elusive propagation is KNIFE EDGE REFRACTION. KNIFE EDGE REFRACTION (KER) (also known as MOUNTAIN BENDING) can make UHF reception possible on the opposite side of high peaks or mountain ranges even when they exceed altitudes of 14,000 Ft!

The theory behind KER is when a mountain peak or range is approximately mid way between a UHF station and a receiver the signal may be bent or refracted by the mountain, making reception possible.

Because few DXers have been (not always easily accessible) where this form of DX happens it has been rarely reported. When DXers have been at these sparse locations some of the most incredible and spectacular DX ever has been seen!

Just because a mountain exists between a receiver and a UHF station can KER be expected to be found. The altitude of both the transmitter and receiver must be taken into consideration. The power of the transmitter must be high enough that the distance to the mountain is not too far so as there is not a strong signal at the base. If not, there will be no signal to be refracted.

Since many UHF signals can be seen at 100 to 150 miles (depending on power and antenna height) it can be possible to see transmissions extended by KER up to and possibly more than 300 miles. The area where the reception occurs could be called a "window". It is limited to a small zone approximately equal in distance from the mountain as the station is from the mountain.

The mountain does not necessarily have to be at the halfway point for KER to occur. If the transmitter is at a lower elevation than the receiver then the reception area will probably be closer to the mountain than the transmitter. If the receiver is at a higher elevation then the opposite will happen.

The shape of the area of reception may resemble a half moon or crescent moon but only in "perfect" situations.

A UHF signal is intersected by a mountain range and the refracted signal appears on the other side. In actual KER situations the size and shape of the "window" will be different since the size of the peak, shape of the peak and elevation of both transmitter and receiver will have a major effect on the formation of the KER signal.

UHF DX reception in the 300 mile range is not a major distance when compared to the other forms of UHF DX propagation but considering the signals are being heard over a mountain range it has to be rated definitely unique.

I have found mountain ranges with sharp peaks & less than 200 miles across to be the best for KER. Where parallel mountain ranges exist the effect is usually destroyed except for within valleys existing between them.

I first started TV-FM DXing 22 years ago in southern Idaho and for the first three years I was only familiar with the more well known forms of UHF DX. When I moved to Bend in central Oregon, (just a few miles from the Cascade Range) I discovered KER for the first time. My first DX location in Bend was on the east side and I could see Mt. Hood, 11239 Ft (100 miles distant) and Mt. Jefferson, 10495 Ft (75 miles distant) from my roof top. To my surprise I found reception of KOMO ch. 4, Seattle WA (290 miles distant) to be regular yet Mt. Hood was directly in line between Bend and Seattle. I was also surprised to find reception of the other Seattle-Tacoma stations to be rare.

Bend's elevation of 3700 Ft compared to KOMO's elevation of approximately 1000 Ft. could explain why I was able to receive the station when I was almost 100 miles closer to Mt. Hood.

The most dramatic KER reception I encountered also occurred in

KNIFE EDGE REFRACTION



central Oregon. On a return bus trip from British Columbia I had a small battery powered TV. About 20 miles from Madras, Oregon on US HWY 26 I suddenly began receiving local signal strength reception of both KEZI ch.9 and KUAL ch. 13, from Eugene Oregon (about 100 miles distant). Looking on the map I noticed that Mt. Jefferson (25 miles distant) was directly between me and Eugene! For about 15 miles the signals remained constant but once I was out of Mt. Jefferson's shadow, the signals disappeared. It is interesting to note my elevation at the time was around 4000 ft where as the Eugene stations are less than 2000 ft.

DXer & KBOI CE, Bill Frahm and I have both noticed many times while traveling from Boise, Idaho to Eugene, Oregon it is possible to listen to Eugene & other Willamette Valley FM stations (over the Cascades) for several miles between Burns, Oregon and Bend, Oregon but as we became closer to the mountains the signals begin to fade out. Just recently Bill Frahm and I passed through the area (on return from the Seaside ARRL Convention) and found central/Southern Willamette Valley FM stations audible from 60 to 90 miles east of Bend.

It would be interesting to see if KER is possible over the Ozarks or Appalachians and if UHF is effected. I suspect if there are any KER UHF reception areas they may be extremely hard to find. They would probably be very small due to the tighter UHF signal angles

As a member of the WORLDWIDE TV-FM DX ASSOCIATION I have discussed some of my KER experiences with other members at several of its conventions. I found very few TV-FM DXers have given KER much thought. I would be interested in hearing from anyone who has seen KER DX.

On a final note, I believe KER could explain the reason for several unique UHF DX openings that have been reported.

One such reception happened in either 1961 or 1962. One evening while watching KTUV ch. 7 in Boise the station broke into network programming announcing several people had called in to report they were receiving a station on normally vacant ch. 8. I changed the set to ch. 8 & found a unidentified weak station coming in. Since my parents wanted to continue to watch their program I was not able to watch the station but I did do a band check before returning to KTUV and found no other unidentified stations. A short time later KTUV made an announcement they had tentatively identified the station as KULR in Billings MT (500 miles distant). At the time I was too young to know anything about propagation but when I started TV-DXing in 1970, I kept thinking back to the time of this strange reception. No normal form of DX could explain how reception of KULR could happen in Boise. Ch. 8 is rarely effected by E-skip and if it had been occurring at the time ch. 3-6 would have been filled with DX. Trops is not known to make it over major mountain ranges at that distance but if it was, again other distant stations should have been seen.

I believe the reception (if it really was KULR) to have been the result of a combination of KER and Trops. It is possible KULR has/had a small reception area in the eastern portion of the Snake River Plain (north of Idaho Falls) where KER reception occurs. If a tropo front was passing thru the area, the KER signal could have been picked up and carried down the valley into Boise.



VHF/UHF UTILITY DX

WEATHER - AIR - MARINE - PSB



BILL HEPBURN - 35 LOCKWOOD RD - BRAMPTON ON - L6Y 4T7

It's the same .. but it's different!

The "NWS News" column has been mutated and transformed into "VHF/UHF Utility DX" .. to encompass a wider spectrum of possible DX on the PSB bands between 30 MHz and 1300 MHz.

Matt Sittel, who did a great job as 'founder' and editor of the NWS News column since 1986, passed over the reigns of the column while on a recent visit to Ontario.

Keeping in the general spirit of the QUD and WJFDA .. this column will remain essentially a DX column. (i.e. - DX as in 'long-distance reception'). However there will be tidbits, hints & station updates from time to time.

Now opening up the entire PSB spectrum for DX reports could amount to hundreds, even zillions of loggings.. Therefore I would propose the following guidelines as to what to report.

1) PSB 'BROADCAST' STATIONS -- i.e. - continue to report all loggings of '1-way' broadcast stations in the Weather, Air and Marine bands.

2) PSB via SKIP -- Yes, BN (yr ETVDX editor), send your reports here! Base stations only -- no mobiles. Also no amateur stations (although 6-metre propagation beacons or repeaters are OK).

3) PSB via TROPD -- Again, base stations only -- no planes, trains or automobiles! (Remember, jets @ 30,000' are supposed to be able to get out for 250-300 miles!). Please try to limit your relogs to 75-100 miles or more (otherwise that word 'zillions' may pop up again).

4) Send in YOUR loggings today!

Now these are just general guidelines .. any & all comments will be appreciated!

LOGGINGS

Well .. right now I only have my own. Matt will be forwarding any remaining reports he has soon .. so on to the DX!

WILLIAM R. HEPBURN - 35 LOCKWOOD RD - BRAMPTON ON - L6Y 4T7

JUNE 1992

14 TR	0749	XLN-470	162.475	ON	LONDON	85	WRC
15 IR	0309	VBG-4	161.65	ON	Orillia	67	CMB 'Toronto CG Radio'
(now w/separate bcst from VBG-2 Fonthill & VBG-3 Cobourg)							
16 IR	2208	YSQ	117.35	ON	LAKE SIMCOE	50	VOR
	2216	IKE	110.7	ON	WATERLOO-GUELPH	34	ILS
	2243	YWT	115.0	ON	WATERLOO	34	VOR
18 ES	2329	I-ELD	111.1	AR	EL DORADO	1007	ILS
	2330	EMG	111.2	LA	ELM GROVE	1079	VOR/HIWAS
(w/Ft Worth wx warning bcst)							
	2332	SHU	117.4	LA	SHREVEPORT	1068	VOR
	2344	SYD	115.2	OK	SAYRE	1200	VOR
	2349	CDS	117.6	TX	CHILDRESS	1269	VOR/HIWAS
(w/Ft Worth HIWAS)							
	2352	PRX	113.6	TX	PARIS	1094	VOR
	2355	BUJ	114.9	TX	BLUE RIDGE	1145	VOR/HIWAS
(w/Ft Worth HIWAS)							

This month's feature

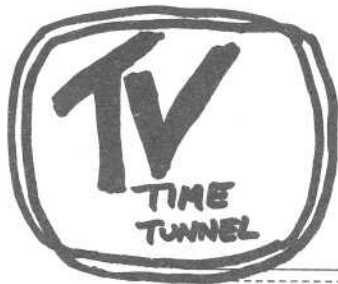
VHF/UHF UTILITY DX

UNITED STATES COAST GUARD MARINE INFORMATION BROADCAST STATIONS 157.1 MHz - MARITIME CHANNEL 22

The USCG maintains an extensive network of radio stations broadcasting weather, notices to shipping, and/or hydrographic data to public, commercial & government marine interests. These stations are sub-divided into "Groups" .. with each group simultaneously broadcasting from one central location through a network of repeaters. Unfortunately, all of these repeaters operate on the same frequency - 157.1 MHz - so it is difficult to know the exact location of the station you're receiving. NOG Sault Ste Marie MI can easily be received in Duluth MN -- from a repeater in Duluth. NML-7 Memphis TN in Poteau OK, etc.

Rather than list all the individual repeaters..here I've listed the "Groups" and their broadcast times (in the 48 states only). Give them a try! Remember all broadcasts are on 157.1 MHz.

NMW-43	SEATTLE WA	--	0630	1830Z
NOW	PORT ANGELES WA	--	0615	1815Z
NMW	ASTORIA OR	--	0533	1733Z
NMW-44	PORTLAND OR	--	1745Z	
NOE	NORTH BEND OR	--	0603	1803Z
NMC-11	HUMBOLDT BAY CA	--	1615	2315Z
NMC-17	SAN FRANCISCO CA	--	1630	1900 2330Z
NMC-6	MONTEREY CA	--	1615	2345Z
NMQ-8	CHANNEL ISLANDS CA	--	0200	1800Z
NOR	SAN DIEGO CA	--	0100	1700Z
NOG	SAULT STE MARIE MI	--	0005	1205Z
NMP-9	MILWAUKEE WI	--	0255	1455Z
NMD-32	GRAND HAVEN MI	--	0235	1435Z
NMD-25	DETROIT MI	--	0135	1335Z
NMD-47	BUFFALO NY	--	0255	1455Z
NML-21	UPPER MISSISSIPPI RIVER (KEOKUK IA)	--	0115	1130 1330 1530 1715 2130Z
NML-7	LOWER MISSISSIPPI RIVER (MEMPHIS TN)	--	0310	1110 1910Z
NML-6	OHIO RIVER (OWENSBORO KY)	--	0900	1000 1245 2100Z
NML-5	TENNESSEE RIVER (BUCHANAN IN)	--	0435	1150 1215 2035Z
NOY-5	CORPUS CHRISTI TX	--	1100	1700 2300Z
NOY	GALVESTON TX	--	1050	1250 1650 2250Z
NMG-2	NEW ORLEANS LA	--	1050	1650 2250Z
NMG-15	GRAND ISLE LA	--	1035	1635 2235Z
NOQ	MOBILE AL	--	1020	1220 1620 2220Z
NMA-21	ST PETERSBURG FL	--	1300	2300Z
NOK	KEY WEST FL	--	1200	2200Z
NCF	MIAMI BEACH FL	--	1230	2230Z
NMA-10	MAYPORT FL	--	1215	2215Z
NMB	CHARLESTON SC	--	1200	2200Z
NMN-37	FORT MACON NC	--	0130	1030Z
NMN-13	CAPE HATTERAS NC	--	0100	1055Z
NMN-80	HAMPTON ROADS VA	--	0230	1120Z
NMX	BALTIMORE MD	--	0130	1205Z
NMN-70	EASTERN SHORE (CHINCOTEAGUE VA)	--	0200	1145Z
NMK	CAPE MAY NJ	--	1103	2303Z
NMY-52	SANDY HOOK NJ	--	1020	2220Z
NMY-3	GOVERNOR'S ISLAND (NEW YORK NY)	--	1050	2250Z
NMY-42	MORICHES NY	--	0010	1210Z
NMY-15	LONG ISLAND SOUND (NEW HAVEN CT)	--	1120	2320Z
NMF-2	WOODS HOLE MA	--	1005	2205Z
NMF-7	BOSTON MA	--	1035	2235Z
NMF-31	PORTLAND ME	--	1105	2305Z
NMF-44	SOUTHWEST HARBOR ME	--	1135	2335Z



This is the
Crosley Broadcasting Corporation
a division of **Avco**

Submitted by Tom Bryant
849 Todd Preis Dr.
Nashville, TN 37221

CROSLEY/AVCO--TELEVISION OPERATIONS

EXPERIMENTAL - pre-war: Under the guidance of Powel Crosley, Jr. (see last month's VUD) WLW's venture into television began in 1937 with the call letters W8XCT. The first experimental presentation was made via closed circuit in 1939, and another in 1941...the same year that W8XCT was licensed to operate on channel 1. (NOTE: Crosley then suspended all television experimentation for the duration of World War II.)

EXPERIMENTAL - post-war: Over-the-air experimentation began in 1946 with transmission periods increasing from an hour a week to over 20 hours a week by the time it was granted a commercial license.

COMMERCIAL DEBUT: February 2, 1948 marked the first use of the WLWT call letters when the Wiedemann Brewing company sponsored a Golden Gloves boxing match. The next day the W8XCT call re-appeared and the station again became an experimental service until February 9, 1948 when it began full-time commercial operation on channel 4 as WLWT. Apparently there was some question as to whether W8XCT could air commercials; and additional question as to whether WLWT was officially authorized to start up before the 9th. The legality of these call letter gymnastics is questionable, but no one seemed to complain.

THE OFFSPRING: It's clear that Crosley/Avco was fully committed to a regional television operation at a very early date. That fact is evidenced by the March 18, 1949 sign-on of WLWD in Dayton, OH (then channel 5); and the April 3, 1949 startup of WLWC in Columbus, OH (then channel 3); and later stations in Atlanta and Indianapolis.

CHANNEL SWAPS: The first three stations (WLWT, WLWD and WLWC) were 'pre-freeze' license grants. Sometime between 1949 and 1952 a massive re-assignment of channels was instituted by the FCC; and all three of the Crosley/Avco operations wound up on different channels. Although the exact dates of the changes are not known, WLWT moved from 4 to 5; WLWD dropped from 5 down to 2; and WLWC eased from 3 up to 4.

SOUTHERN EXPOSURE: In 1953 the Crosley/Avco group purchased WLTV, channel 11, Atlanta from Broadcasting [Magazine] Inc. It's interesting to note that Broadcasting had acquired the facility from WSB-tv in 1950; and even more interesting to note that WSB-tv had originally been licensed to operate on channel 8. Under Crosley/Avco ownership the station became WLVA and remained a part of the group until 1962. Also of interest...channel 11 has operated as WQXI-tv, WAII-tv, and now WXIA-tv. That's a total of six different sets of call letters!

WHY ATLANTA? Good question. Little is known about Crosley/Avco's reason for acquiring the GA station. It didn't fit the profile of their existing group, and it was never interconnected with the Ohio stations (which were tied together from the start). An educated guess points to a major market VHF up for grabs at a decent price...but...one that turned out to be a 'square peg in a round hole' and was kept only until it commanded a handsome sale price (twice the purchase price) in 1962.

[continued...next page...]

[TV TIME TUNNEL - Crosley/Avco - continued...]

BASTARD STEPCHILD?: One would think that the corporate gurus in Cincinnati wanted to hide the Atlanta operation from the public eye. In several promotional pieces issued by Crosley/Avco in the mid 1950s there is no mention of WLVA. The channel 11 call does show up on letterhead, however seems to disappear again after the inauguration of WLWI.

INDY INVASION: October 30, 1957 marked the launch of Crosley/Avco's Fifth (and last) television property, channel 13, WLWI in Indianapolis. WLWI, like the Ohio stations, was built from scratch; and was interconnected by terrestrial microwave links with its sister stations in the Buckeye State. Although WLWT was the key station, the other three originated their own programming and programs were routinely swapped between all stations in the group. The channel 13 operation (springboard from then-weatherman David Letterman) was sold in 1975.

FOR SALE!: Although the Indy station was the first to go (excluding Atlanta), Avco [Crosley had been dropped by this time] decided to get out of the business of tv ownership. The other stations were sold within months...Columbus in December 1975; the 'Mother Ship' - WLWT in January 1976; and Dayton in April 1976. Not even the 'Crown Jewel'... WLW radio survived the corporate broadcast purge. Powel Crosley Jr.'s dream had passed through a reality of fame, power and superpower; and was in the hands of new owners in March of 1976. The Crosley/Avco chapter in broadcasting (actually it was more like a book than a chapter) was closed.

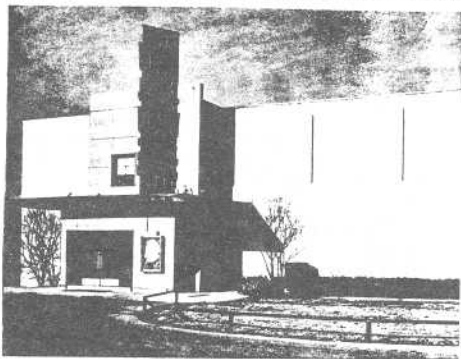
ABOUT THE CALL LETTERS: Although the FCC assigned what appeared to be standard four-letter calls for the Crosley/Avco stations, they were never presented as such either on the air or in print. Perhaps in Powel Crosley's tradition of gimmicky names for products, the owners elected to insert a - after WLW...thus WLW-T (Television), WLW-D (Dayton), WLW-C (Columbus), WLW-A (Atlanta), and WLW-I (Indianapolis). The only other station to identify in a similar manner at the time was "W-TWO" (channel 2) in Bangor, ME.

ETCETERA: Two of the three iconoscope cameras built for W8XCT were later used for film and slide pickups at WLWD. --- WLWT became the first NBC affiliate in the U.S. in April 1948. The station aired kinescope films of network programs until it was connected with New York via co-axial cable in late 1949. --- Many now famous personalities made their debuts on the Crosley stations; among them, Phil Donahue. Donahue began his television career at WLWD. At first the show was aired only on the Crosley/Avco stations, but later went into syndication...continuing to originate from Dayton until 1974. --- "Boston Blackie" was produced by WLWT in 1949...the series went nationwide a few months later, continuing to originate in Cincinnati. --- WLWT had an impressive roster of live programming including "The Midwestern Hayride" and "The 50-50 Club", hosted by Ruth Lyons. Both were originally radio shows, both were adapted for television, and both were simulcast on all Crosley stations for many years. - - In August 1950 WLWT began origination of programs for the NBC network. "Cincinnati at Sunset" and "Dude Ranch Holiday" were seen regularly nationwide. The network was so impressed with the talent and production quality that it later added "Midwestern Hayride", "Straw Hat Matinee" and the long-running Ruth Lyons "50-50 Club." - - In 1950, NBC picked up another WLWT origination, "Breakfast Party". - - WLWT was a pioneer in color telecasting. In fact, the Crosley/Avco engineers adapted three RCA TK-41 color cameras with special low-light pickup tubes to air a nighttime baseball game from Crosley Field. It was the first-ever telecast of a nighttime game, and the technology was largely credited to the WLWT engineering staff. - - Other big names and special accomplishments connected with Crosley/Avco are too numerous to detail here...suffice to say, there were many!

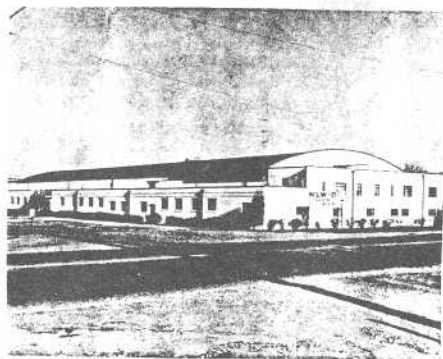
EPILOG: This remarkable broadcast conglomerate all began because one man built a wireless receiver for his son in 1921. American ingenuity and free enterprise still produce such success stories, but they are seldom as dramatic as those of broadcast pioneers such as Crosley.

[TV TIME TUNNEL - Crosley/Avco - continued...]

With special thanks to the large number of people who contributed data for this study, "TV TIME TUNNEL" concludes its visit to WLW-Land with a montage of historically significant material pertaining to and (for the most part) prepared by Crosley/Avco. I've submitted several pages, but given our Editor-In-Chief a free hand to delete whatever might be necessary to satisfy space requirements.



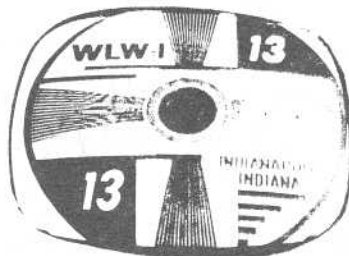
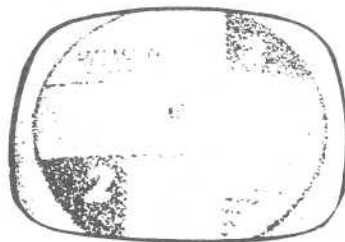
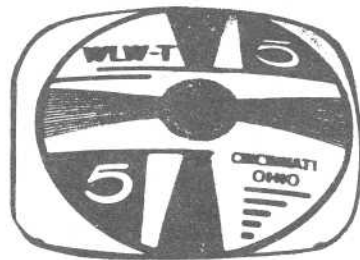
WLW-C, Columbus, Ohio



WLW-D, Dayton, Ohio



WLW-I, Indianapolis, Indiana



[TV TIME TUNNEL - Crosley/Avco - continued...]

FACTS ABOUT WLW-D DAYTON, OHIO

ESTABLISHED MARCH 15, 1949

CHANNEL	2 (54-60 megacycles)
POWER	Visual, 100 kilowatts Aural, 50 kilowatts
ANTENNA	Height, 508 feet above average terrain
EQUIPMENT	2 Studio Cameras 3 Field Cameras 2 Film Projectors (16 millimeter) 1 Automatic Slide Projector (2" x 2" Leica or Esco metal mount. Message Area: 3/4" x 3/4" centered) 1 Standard Slide Projector, 2" x 2" 1 Balopticon (Card Size: 14" x 15", Scanning Area: 5" x 7") 1 Mobile Unit with micro-wave relay and associated equipment. Three-camera pickups possible. Service the 3 WLW-TV stations.
STUDIOS	Television Square 4595 South Dixie Highway Dayton 9, Ohio Telephone: WALnut 2101 Studio A, 60' x 80'
TRANSMITTER	Frytown and West Carrollton Roads, Dayton, Ohio
OPERATION	Licensed to operate full time. On the air Monday through Friday from 6:45 a.m. until approximately 1:30 a.m. On the air Saturday from 7:15 a.m. and Sunday from 8:30 a.m. until approximately 1:30 a.m.
NETWORK	Inter-connected with Cincinnati and Columbus. NBC

Radio and Television Stations

AM: WLW CINCINNATI
TV: WLW-T CINCINNATI • WLW-D DAYTON
WLW-C COLUMBUS • WLW-A ATLANTA



The Jack Denton Show at WLW-C, Columbus



Ruth Lyons' 50-50 Club originates at WLW-T



George Willsford hosts "Exercise in Knowledge" at WLW-I, Indianapolis



The Jimmy McClain Show at WLW-D, Dayton