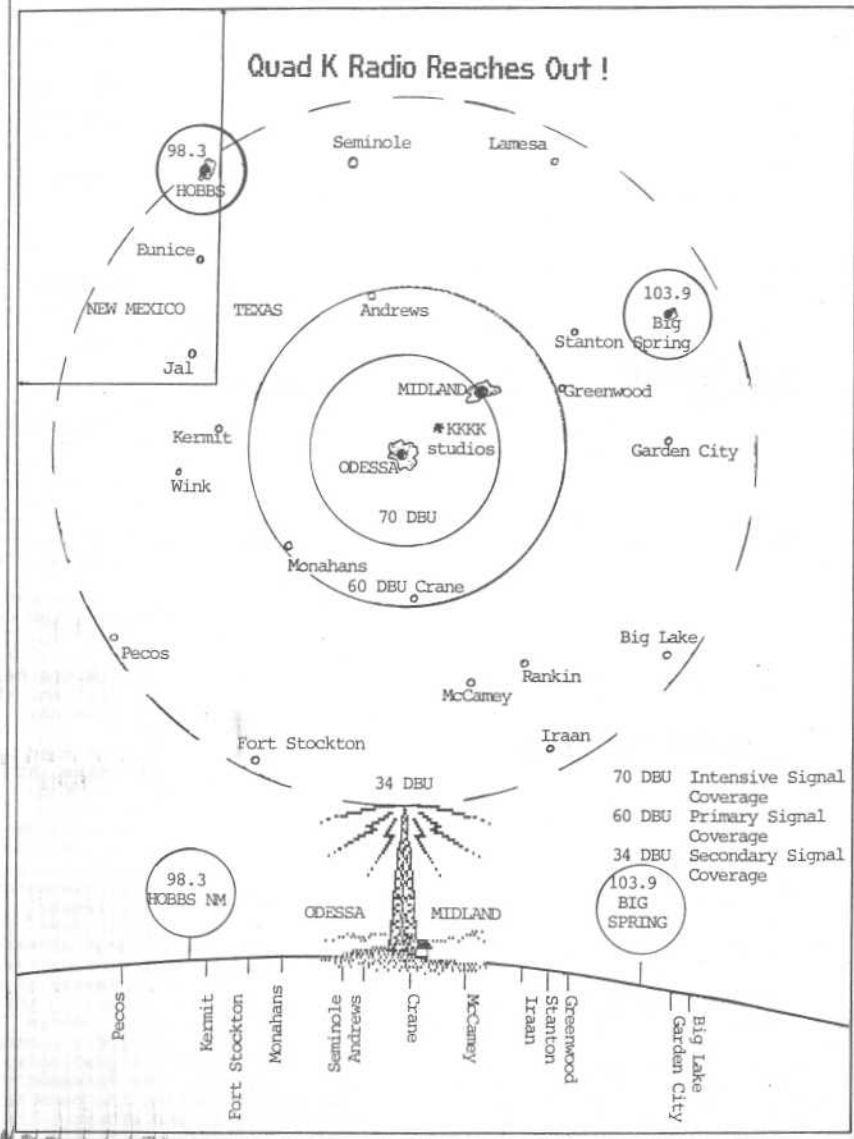


Vhf-Uhf DIGEST

The Official Publication of the Worldwide TV-FM DX Association

JANUARY 1993



WORLDWIDE TV-FM DX ASSOCIATION

POST OFFICE BOX 514-BUFFALO, N.Y. 14205-0514-U.S.A.

OPINIONS EXPRESSED IN THIS PUBLICATION ARE THOSE OF THE INDIVIDUAL CONTRIBUTORS AND DO NOT NECESSARILY REFLECT THE VIEWS OF THE PUBLISHER OR BOARD OF DIRECTORS. WE RESERVE THE RIGHT TO EDIT MATERIAL TO MEET PUBLISHING STANDARDS. UNLESS PREVIOUSLY AGREED UPON IN WRITING, ALL MATERIAL SUBMITTED FOR PUBLICATION IN THE VHF-UHF DIGEST BECOMES THE PROPERTY OF W.T.F.D.A.

REPRODUCTION OF MATERIAL FROM THE VHF-UHF DIGEST WITHOUT PERMISSION OF W.T.F.D.A. IS PROHIBITED. INDIVIDUALS AND OTHER ORGANIZATIONS ARE GRANTED SUCH PERMISSION PROVIDING PROPER CREDIT IS GIVEN TO THE SOURCE.

ANNUAL DUES: United States: \$20.00

(payable in Canada: \$22.00

U.S. funds) Overseas: \$32.00



first class mail



11/93
WILLIAM N NOLLMAN
35 NYE ROAD
GLASTONBURY CT 06033



TV News

Doug Smith
14 Brookside Court
Nashville, TN 37209

615-356-8305
CIS 72777.3143



ABBREVIATIONS USED IN THIS COLUMN:

ERP= Effective Radiated Power, in kW
HAAT=Height Above Average Terrain, in meters
AAT= Above Average Terrain
AG= Above Ground
ASL= Above Sea Level
nc= No change
TL= Transmitter Location
CP= Construction permit
MP= Modification permit (modification of construction permit)
*= Non-commercial
CRTC=Canadian Radio-TV Commission

CONSTRUCTION PERMITS GRANTED

St Ch ERP HAAT City
CO 4 10.6 422 Grand Junction;
John Harvey Rees

APPLICATIONS TO MODIFY CONSTRUCTION PERMITS

St Ch ERP HAAT Call City
TX 48 3028 297 KNVO McAllen
(TL: 26°05'20"N, 98°03'44"W
Just east of McAllen)
(was 3162kW/160m)
VA 43 940 126 WVBT Virginia
(was 2040kW/115m) Beach

CONSTRUCTION PERMITS REVOKED/CANCELLED/ETC.

St Ch Call City
CA 68 KEEF-TV Los Angeles

CONSTRUCTION PERMIT MODIFICATIONS GRANTED

St Ch ERP HAAT Call City
MT 6 nc 249 KPQD Billings

APPLICATIONS TO CHANGE EXISTING STATIONS

St Ch ERP HAAT Call City
IN 63 1374 144 WINM Angola
TN 54 26.1 395 WPMC Jellico
(TL: 36°24'36"N, 84°10'38"W)
(Walnut Mtn., roughly 7km NW of
LaFollette or 40km NW of
Knoxville)
(was 89kW/600m)

CALL LETTERS ASSIGNED TO NEW STATIONS

St Ch Call City/Permittee
CA ?? KDTQ Los Angeles; General
Instrument Corp.

CALL LETTER CHANGES FOR EXISTING STATIONS

St Ch City Was Now
CA 29 Eureka KZJA KBVU
FL 35 Miami WMLB-TV WOLP-TV
MT 6 Billings KPQD KSVI

CHANGES TO THE TABLE OF ALLOCATIONS

Santa Maria, CA: Add 42

STATIONS OFF THE AIR

KVRR-12 Pembina, ND
KLDT-55 Lake Dallas, TX

OTHER STUFF

I'm pretty sure the KDTQ calls for Los Angeles are for an experimental station-- I know of no open commercial channels in L.A.; besides, this call is in the sequence of calls being assigned by the FCC (rather than requested by the licensee) to FM stations.

While there haven't been many tabulated changes above, the FCC has been pretty active.

Commission Chair Al Sikes says he'll resign, effective Jan. 19. (which happens to be the day before Bill Clinton's inauguration) It's believed James Quello will replace Sikes, at least temporarily.

Two years after the enactment of a law specifically designed to spur such an agreement, the big 3 networks have adopted standards to reduce television violence.

Not that DXers didn't already know it but... Clay Pendarvis, the FCC official in charge of call letters, told *Broadcasting* that the Commission rarely denies applications for call sign changes. "If the call sign is available, we'll sign it. And in cases of two people wanting the same thing, we give it to the oldest continuous licensee. It's strictly a license decision based on their business needs and objectives."

As noted last month, the FCC's preliminary HDTV allocation table is out. I now have a copy of the entire table, and the Tennessee allocations seem to confirm the definition of Site 1/Site 2/etc. I've also now seen the spacing criteria used; the Commission proposes allowing second-adjacent allocations at any distance, and first-adjacent if either the transmitters are within 5 miles of each other, or at least 55 miles apart.

The complete table also has a few VHF channels in it, despite the fact the FCC indicated all HDTV would be on UHF. Indeed, the table contains one low-band VHF channel! (channel 2 in Scranton, Penna.) Another broadcaster has speculated that these VHF channels would be assigned to existing UHF stations, which would be expected to move their NTSC operation to the VHF channel, and use their current UHF channel for HDTV; then, when NTSC is phased out, they'd surrender the VHF channel.

VHF broadcasters, the NAB, and the Big 3 networks oppose the all-UHF plan, claiming it will reduce the value of their stations & reduce coverage. UHF broadcasters, of course, are quite happy with the plan, which would eliminate their disadvantage.

The Commission has proposed yet another technology for multi-channel TV programming distribution. The 27.5-29.5GHz band would hold two licensees, each using 1000MHz of spectrum- enough to transmit 160 regular NTSC signals.

A judicial panel has agreed to put off, until March 4, hearings on challenges to the Cable Act. The Justice Department asked for the delay, to give new officials to be appointed by Bill Clinton an opportunity to handle the case.

And in another challenge to the Cable Act, Rep. Barney Frank (D-Mass.) plans to introduce a law that would repeal the retransmission-consent provisions, claiming they would result in cable rate hikes.

Also involving cable, KHIZ-64 Barstow, Calif. has won a \$3,000,000 suit against Jones Intercable in Sierra Madre. KHIZ claimed Jones was guilty of anti-competitive behavior for refusing

to carry the station on their system. Jones plans an appeal; either way, a separate order would be needed to force carriage of KHIZ.

Cable giant TCI has announced plans to install digital video compression equipment in subscribers' homes by early 1994. This equipment would allow TCI systems to add 50-60 new, digitally-compressed, channels, though improvements to compression technology could eventually expand this to 500 channels. (now, where do they find 500 channels worth of programming?!) (actually, several observers suspect such "mega-systems" would offer large amounts of pay-per-view programming)

For several years now, telephone companies have been running experiments & pushing legislation that would allow them to provide cable service. (which is currently illegal) Now, a cable system in New York City is trying to reverse the situation. Time Warner's system in Queens is installing special equipment in 50 homes that would allow subscribers to plug their telephones into their cable boxes, and route the local portion of their long-distance phone calls through the cable TV system, rather than through the local telephone company.

Currently, part (an executive of the firm providing the equipment says nearly half) of the cost of a long-distance call is the cost charged by your local telephone company to connect you to the long-distance company. If this experiment were to prove successful (and regulatory agencies didn't object), cable firms could provide competition in this area.

KNWS-51 Katy, Tex. (Houston) is planning an all-news format when it joins 13 Houston competitors next spring.

If you're showing a cable premium channel in a place of business, you might want to reconsider.. SportsChannel Chicago has sued 68 area bars \$1,530,000 each, charging that they either used illegal descramblers to pick up Blackhawks hockey games off the satellite feed, or ordered the service at the residential rate of \$20, then showed it in a business. (for which the fee was \$100)

The Video Jukebox Network is for sale. Potential buyers include Minneapolis rock musician Prince.

A new 539m tower is in the works for WCIX-6 Miami. Their old tower was destroyed by Hurricane Andrew; the new one is expected to be in place next fall. WCIX is currently broadcasting from a temporary antenna on the WTVJ-4 tower north of Miami, but this is short-spaced to WCPX-6 Orlando and WPTV-5 West Palm Beach, and is not an acceptable permanent situation.

FORUM

Jeff Kruszka, Harahan LA:

Jeff sends a brief article from the New Orleans *Times-Picayune* of Nov. 23. A year ago, ABC's "PrimeTime Live" reported finding prayer requests sent with donations to televangelist Robert Tilton's "Power Channel" program in trash bins outside the Tulsa bank where donations are counted. In the wake of the report, donations to Tilton's ministry are sharply down; "Power Channel" has been off for 3 months; Tilton's staff faces layoffs; and KLDT-55 Lake Dallas, Tex. (which had aired Tilton's "Word of Faith" 24 hours) has been off the air for 3 months.

(Jeff, with regard to "WBTR"-19 using K65EF as a STL, W54BH in Madison did something similar-- indeed, I think they also used channel 65-- for awhile. In their first incarnation as W05BD, they also had a remote van (?) which was set up to link back to the studio on a UHF LPTV channel. Whether this is legal, I don't know, but rather suspect it is-- seems anything goes in LPTV!)

Nate Fly, Madison WI:

Nate's trying to make me homesick with a whole stack of news from Madison..

W11CE had been running Video Jukebox for 3-4 months since W54BH went off, but channel 11 is now off as well.

W08CK is supposed to carry the religious service Family Net, but so far all Nate's seeing is occasional 3/4 color bars, for several hours about once a month.

Longtime Madison broadcaster (and former WKOW-TV executive) Terry Shockley has challenged the licenses of Tak Communications' WKOW-27, as well as WKOW-19 La Crosse, WQOW-18 Eau Claire, and WAOW-9 Wausau.

Current owners Tak Communications are in Chapter 11 bankruptcy. Still, a Univ. of Wisconsin communications professor notes that Shockley stands less than a 10% chance of winning the license, and it could cost him over \$1,000,000 in legal fees. Also, a waiver of current FCC ownership rules would be necessary, as Shockley currently owns WOLX(FM) Baraboo, which also serves Madison.

Finally, several Madison TV (and FM) stations are moving. According to an article in the July 5 *Wisconsin State Journal*, when the Sematech semiconductor research organization was considering locating in Madison, they decided against it partially due to fears of sensitive instruments being unable to deal with the signals of WHA-21 on the site. Other prospective clients of the UW's research park voices similar concerns.

So, the University, which owns WHA-TV, decided to move the tower, onto land it owns about 2km west, about 10km WSW of downtown. Also likely to move are WISC-3 and WKOW-27. (the latter's tower is across the street from WHA) WMSN-47's tower is already on the site; presumably the new tower will be built adjacent to WMSN's tower, then WMSN will install a new antenna on the tower & take down their existing tower. WIBA-FM 101.5, (currently on the WMSN tower) WERN-88.7, (currently on the WHA tower) and WZEE-104.1 (currently on the WKOW tower) will probably move as well. WMTV-15 does not plan to move. (FM stations WORT-89.9 and WWQM-106.3 are also on this tower)

WISC-3 chief engineer (and my former boss) Chris Cain says the "newer-technology" (read that circularly polarized) antenna they'll install will improve that station's signal. Actually, that applies mostly to people living near the tower-- but population growth in that part of Madison has been phenomenal, and the signal improvements from circular polarization will certainly help quite a bit. The effect on DXers will probably be minimal.

Besides the 4 NTSC antennas, the tower is also designed to support the additional antennas needed for HDTV broadcasts.

Physically, the tower will be of the traditional three-legged design, supported by at least 24 guy wires. At the top (414m) will be three poles in a "candelabra" arrangement; there will also be antenna platforms at the 183m and 274m levels. (presumably, the latter for FM and land-mobile) Construction is to be of a steel alloy including vanadium, manganese, and nickel.

The University plans to contract with Motorola to operate the tower, and probably eventually buy it.

Plans are to start pouring footings this fall, and build the tower next spring. South Carolina firm Kline Iron & Steel (which has built many other broadcast towers) will be doing the construction.

There are some concerns over the tower.

The owner of the farm adjacent to the tower isn't happy with the strobe lights currently on the WMSN tower; Randy Theis says "It's like getting your picture taken". Some officials said the new tower might get away with the traditional red lights, though I suspect the Wisconsin Aeronautics Board has other ideas.

Another concern is ice falling off the guy wires. Freezing rain (often at higher altitudes, while it's plain old rain on the ground) is not unusual in early spring in Wisconsin. This rain can freeze on the guy wires and upper parts of the tower; then, when the temperature rises, chunks of ice break loose & fall to the ground. Some of these chunks can be dangerously heavy, and can cause considerable damage to cars. (and potential injury to people, though it usually falls close to the tower where few people are)

Finally, there's concern that if the tower were to fall, it would fall outside the property, and potentially onto busy Mineral Point Road or Co. Highway M. State official Gerald Germanson says, however, that when guyed towers fall, "they tend to crumble rather than fall over because there are so many guy wires holding them up".

(this has been the experience of other tower collapses)

Tom Bryant, Nashville TN:

Tom has a few notes..

WHTN-39 and WHNT-19 have both gone 24 hours; the former with- we assume- their regular religious fare; the latter with CBS's overnight program.

Local TBN W36AK has been off for nearly 2 weeks. WPGD-50 had been IDing for W36AK; haven't seen a legal ID to know whether they still are.

Per a phone call from a friend in Manitoba, Tom mentions that KVRR-12 is off. He speculates (and I agree) that reasons include adjacent-channel interference from CHMI-13; tax laws in Canada that prevent Canadian advertisers from deducting the cost of advertising on U.S. stations; and the fact that the station wasn't able to get carriage on the Winnipeg cable system.

Tom thinks KOAV-3 (NM), KPQD-6 (MT), and WHTA-5 (MI) are on. I have no information on these -- can any members shed any light on these Es targets??

Bill Nienajadly, Clifton NJ:

As usual, Bill sends a stack of clippings;

Newark Star-Ledger, Oct. 19: "New Jersey is in a unique position to attract and reconstitute the television broadcast-consumer products industry and create thousands of jobs that were lost during the 1970s and 1980s.". So says a report prepared for Gov. Jim Florio. The report suggests that the NJN public television network be turned over to the state's Department of Commerce and Economic Development, where it would become a field-test center for HDTV. The thought is that the network would become a test bed for TV technology; test fees and royalties would finance programming.

From the NYC Post, a ratings-tampering scandal.. An ad in the NY Daily News TV section read

"Nielsen families. Meter Check tonight!! Watch Bill Cosby Tonight on You Bet Your Life 7p.m. Channel 2".

This kind of ad is a serious no-no, which can result in a TV station being deleted from the ratings book for the time period in question. Except, Channel 2 (WCBS-TV) didn't place the ad. It was placed by Carsey-Warner Co., the firm which distributes "You Bet Your Life". Rather than penalize WCBS, which really wasn't guilty, Nielsen deleted all NYC station ratings for the time period in question.

Casey-Werner President Bob Jacobs told the *Post* "Asking people to try your show -- I don't see what the problem is". Uh-huh. As the paper says, he's probably frustrated that the program in question is in last place in the NYC 7pm ratings. Indeed, some executives at other NYC stations speculated Jacobs was trying to get a dead-last position deleted from the ratings book!

WCBS-2 general manager Bud Carey wasn't very happy about the incident. He told the *Post* he "sort of went through the roof... Had we known about it before the fact, we would have told the folks at Carsey-Werner they were making a mistake."

Though, in general, the ratings are to be taken with a grain of salt. For example.. In the November books, in one time period, one ratings service had WSMV leading WTVF 31-24, while the other had WTVF leading 31-23!

Going back to HDTV, an article in the Nov. 11 *Wall St. Journal* paints a pessimistic picture of HDTV's future in smaller markets.

Stephen Merren, GM of WKTV-2 Utica NY says of HDTV: "It's definitely light years ahead of everything else. But we can't afford the millions of dollars we'll need to invest. I don't see how others will be able to pay for it either."

The *Journal* estimates that the broadcast industry, including local stations, networks, cable channels, and local cable systems will have to spend up to \$20billion on HDTV - and consumers may spend as much as \$68billion on HDTV receivers. Estimates are that even by the year

2000, HDTV TVs will still cost about \$2,000.

The question is, who will pay?? In light of the Cable Act, cable subscribers are obviously unlikely to be interested in higher rates. Among the big-3 networks, only ABC was profitable in 1991. And among the 1,076 commercial TV stations in the U.S., over 350 lost money last year-- and many more owe huge amounts in debt service. And, we're in a *depression* in advertising revenues.

Citadel Communications (KCAN-8, KCAU-9, WUTV-29, WMGC-34, WVNY-22) owner Philip Lombardo says the investment of \$1.2million at each of his stations to simply pass along HDTV signals from the networks is "impossible". In Erie, Penna., WICU-12 chief engineer Mike Csop says "HDTV will put us out of business". "I spend the same amount as the top 50 markets to put on a picture, but our revenues are much less."

At the receiving end.. Media Access Project director Andrew Jay Schwartzman warns that if HDTV receiver prices don't drop, "This is an information system which will truly separate rich from poor.". Those unable (or, as in my case, unwilling!) to pay \$2,000 for a TV set will find TV unavailable. Sony America president Ron Sommer (who should know!) says that those who think HDTV sets will be less than \$2,000 by the year 2000 are "dreaming". In Japan, where there has already been aggressive price-cutting, HDTV sets still cost nearly \$8,000.

By the time you read this, it'll be too late-- but I'll say Merry Christmas & Happy New Year anyway.. Afraid no signs of Es here, but a pretty good tropo-- central Virginia to the west coast of Florida-- is being reported on 144MHz as I write..

(Dave Sinclair-- sorry, I seem to have misplaced your contribution re:rule changes for potential religious broadcasters in Canada. Christmas disorganization, y'know!)

73 Doug

PHOTO-NEWS WTFDA

Along with the new year WOSU-34 Columbus Ohio has a new logo (pictured at right). Thanks to "TELEVISION NEWS" editor Doug Smith for forwarding a news paper clipping sent him by Keith Short-Columbus Ohio.

The next reporter is Robert Kramer-Chicago Illinois. Equipment: 1978 RCA 19" b&w, Sony 19" color set, Mitsubishi HS-422UR stereo VCR, Archer U-120 UHF Yagi at 68', Archer V-185 log periodic at 58'; both antenna fed with RG-11 coax, 3 Archer adjustable preamps model 15-1113A, Alliance HD-73 rotor. Camara equipment: Ricoh XRM 35mm loaded with Kodak T-Max 400 ASA b&w film.

MAILING ADDRESS:
PHOTO-NEWS
12284 Nice Road
Akron NY 14001-9529
JANUARY 1993

NEW LOOK FOR WOSU



WOSU-TV (Channel 34) has a new logo. Beginning today, the station's identification will be this computer-generated image. It will appear during station breaks, in promotions and on bumper stickers.

KLGT-23

Minneapolis
Minnesota

360 mile tropo

seen August 9, 1992

at 0500CDT



KVRR-15

Fargo
North Dakota

572 mile tropo

seen August 9, 1992

at 0605 CDT



Robert Kramer's foto file continued....

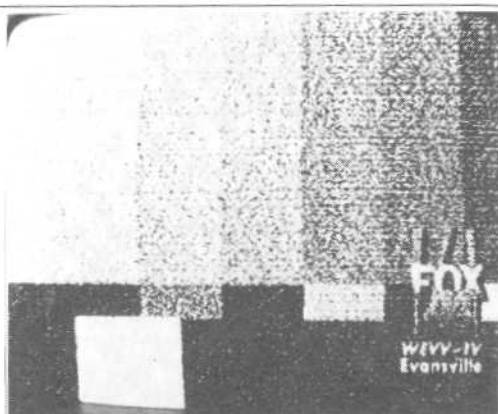
WEVV-44

**Evansville
Indiana**

267 mile tropo

seen August 10, 1992

at 0502 CDT



THE END

Jeff Kadet-Macomb, Illinois is our next reporter. Equipment: ICOM R7000 with video adapter; Zenith L1310, N1310, Y1310 13" color sets; five 9" to 12" b&w Zeniths for E-skip (all sets circa 1979-1982). Screened Channel Master (CM) 7' dish & UA-900 preamp. .5 aluminum hardline up 85'. CM 1110 with PA-1975 preamp. .5 aluminum hardline up 80'. Winegard 5 element lo-band yagi (vertically polarized) with RG-11 up 18'.

KLDT-55

**Lake Dallas
Texas**

620 mile tropo

seen June 17, 1992

at 0200 CDT



KLSB-19

**Nacogdoches
Texas**

665 mile tropo

seen June 17, 1992

at 0208 CDT



Jeff Kadet's foto file continued....

KHSX-49

**Irving
Texas**

645 mile tropo

seen June 17, 1992

at 0300 CDT



KUVN-23

**Garland
Texas**

620 mile tropo

seen June 17, 1992

at 0413 CDT



K45AR

**Eagle Bend
Minnesota**

450 mile tropo

seen August 9, 1992

at 0250 CDT

THE END



Till next time, DAVE



VHF/UHF UTILITY DX

WEATHER - AIR - MARINE - PSB



Well it looks as though as the winter DX doldrums are now with us. This is a good opportunity to update Weather Radio station info. However don't wait until the summer to get in on low-band skip. Even though the solar cycle is on the downslide, some occasional F2 skip is still possible -- though much rarer than in recent years. And don't forget about possible Es.

AM in FM on SW!

Although just out of the scope of the WUD, an interesting station to listen to nevertheless is WFLA Tampa FL (AM-970) which can clearly be heard most days from up here in Ontario on 25.87 MHz in NFM mode. Supposedly only for remote broadcast pick-ups, etc., WFLA seems to use it for some other purpose as sort of a relay.

There are 7 channels available in the 11-metre band to radio stations using FM mode, they are..

25.87, 25.91, 25.95, 25.99, 26.03, 26.07 and 26.09 MHz.

NEW WEATHER RADIO STATIONS

The following Weather Radio Canada stations have recently hit the airwaves..

CBPU-FM-2 103.7 PORT HARDY BC

UBA-557 162.40 GRANDE PRAIRIE AB
XKA-598 162.40 LETHBRIDGE AB
XDF-962 162.475 LODMA AB
..... 162.7 MEDICINE HAT AB
VBC-337 162.55 RED DEER AB

VAM-596 162.40 MIDALE SK
VAR-592 162.475 NORTH BATTLEFORD SK
VAR-551 162.40 PRINCE ALBERT SK
VBC-936 162.40 REGINA BEACH SK (// XLM-537 162.55 Regina)
VAR-554 162.40 STRANRAER SK (// XLF-322 162.55 Saskatoon)
XLF-524 162.55 SWIFT CURRENT SK
VAM-594 162.55 YORKTON SK

VAO-302 162.55 BRANDON MB
VBA-814 162.55 DAUPHIN MB

XLR-527 162.40 BEAUCE PQ 75 watts
XLR-526 162.40 BLANC-SABLON PQ 83 w
XLR-749 162.55 CHIBOUGAMAU PQ 211 w
XLR-285 162.55 CHICOUTIMI-JONQUIÈRE PQ 100 w
XLR-611 162.475 GRAND-FONDS PQ 151 w
XLR-606 162.55 HARRINGTON HARBOUR PQ 195 w
XLR-529 162.475 KÉGASKA PQ 155 w
VOR-182 162.40 MINGAN PQ 182 w
XLR-616 162.55 RIMOUSKI PQ 35 w
XLR-525 162.475 RIVIÈRE-AU-RENARD PQ 204 w
XLR-748 162.40 ROUYN-NORANDA PQ 219 w
XLR-528 162.40 SAINT-CLÉOPHAS PQ 87 w
XLR-519 162.55 SEPI-ÎLES PQ 89 w
XLR-747 162.475 VAL-D'OR PQ 191 w
XLR-750 162.55 VILLE-MARIE PQ 219 w

(These PQ stations are all FF language).

UHF/UHF UTILITY DX

XLK-409 162.40 BAKERS SETTLEMENT NS 126 w (// XLK-473 162.55 Halifax)
XLW-573 162.475 HEBRON NS 126 w (// XLK-473 162.55 Halifax)

UBC-200 162.40 YELLOWKNIFE NT

Proposed Stations..

..... 162.40 FORT DODGE IA (status ? on air ?)

..... 162.40 RAWLINS WY (ditto)
..... 162.55 ROCK SPRINGS WY (ditto)

..... 162.40 CAMPBELL RIVER BC
CBP?-FM 101.9 KAMLOOPS BC
..... 162.55 KELOWNA BC

..... 162.55 KITCHENER-WATERLOO ON (spring 93)
..... 162.40? MOUNT FOREST ON (relay of above)
..... 162.55 SUDBURY ON (spring 93 - EE/FF)

XLR-??? 162.7 MEGANTIC PQ (may already be on, FF
// XLR-412 162.475 Sherbrooke)
XLR-??? 162.7 MONT-TREMBLANT PQ (may already be on, FF)

Environment Canada is also looking at the possibility of operating 2 weather radio stations in cities such as Montreal, Ottawa & Sudbury ... 1 in English, 1 in French.

WEATHER RADIO CHANGES

XMJ-320 162.55 PORT ELGIN ON now relays XMJ-316 162.475 Collingwood rather than XLI-839 162.475 Goderich.

XLR-??? 162.40 ÎLES-DE-LA-MADELEINE PQ now // Sept-Îles PQ not Moncton NB.

XLK-418 162.40 DALHOUSIE NB - ex-162.55
XLK-417 162.55 ST-ISIDORE (BATHURST) NB - ex-162.40

The following NF stations do not relay XLM-616 Gander but instead have a separate // broadcast..

XLW-297 162.40 BRENT'S COVE NF
XLW-296 162.55 CONCHE NF
XLW-295 162.55 MOUNT ST MARGARET NF
XLW-298 162.40 PORTLAND CREEK NF
XLW-299 162.40 ST ANTHONY NF

WEATHER RADIO DELETIONS

..... 162.40 CAMERON (GRAND FALLS) NB

XLK-??? 161.775 SABLE ISLAND NS -- strictly relays VCO 161.65 SYDNEY NS (Coast Guard) and not XLK-473 Halifax.

NEW COAST GUARD STATIONS

VAE- 161.65 ESPERANZA BC (// VAE 161.65 Tofino)
VAE- 162.475 ESTEVAN POINT BC (// VAE 161.65 Tofino)

UCK- 161.775 HAVER-SAINTE-PIERRE PQ (// UCK 161.65 Sept-Îles)
UCG- 161.85 HEATH POINT PQ (// UCG 161.65 Rivière-au-Renard)
UFN- 161.775 ST-JEAN-SUR-RICHELIEU PQ (// UFN 161.65 Montreal)

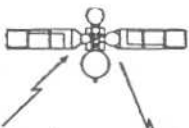
VON- 161.65 BULL ARM NF (// VON 161.65 St John's)
UCM- 161.775 L'ANSE AUX MEADOWS NF (// UCM 161.775 St Anthony)

COAST GUARD CHANGES

VAS-6 162.55 ALERT BAY BC (formerly VAF) - now relays VAC 162.55 Comox (also affects UGL-24 162.40 CALVERT & VAF-B 161.65 HOLBERG)
XLA-726 162.475 MT HELMCKEN (VICTORIA) BC (formerly VAK)
- now relays XLK-672 (aka VAI) 162.475 Bowen Island

(CONTINUED ON PAGE 13) 11

SATELLITE NEWS



George W. Jensen
4604 Arantana Avenue
Baltimore, MD 21206-4220

It remains almost impossible to keep up with the continual changes in transponder usage as C3 and C4 light up and F4 will soon go dark and be returned to Canada. F4 is an old Anik bird that was in storage and put into US service when F4 went kaput.

Here are the proposed C3 (131 West) services

- 1 - Family Channel West
- 2 - The Learning Channel
- 3 - Viewers Choice I
- 4 - Lifetime - West
- 5 - VISN/ACTS
- 6 - Court television
- 7 - C-Span I
- 8 - QVC Fashion Channel
- 9 - Discovery Channel
- 10 - Home Shopping 2
- 11 - Prime Sports
- 12 - Arts and Entertainment (A&E)
- 13 - The Weather Channel
- 14 - NESN
- 15 - Showtime - east
- 16 - MTV - West
- 17 - The Movie Channel - East
- 18 - Nickelodeon - West
- 19 - TBA
- 20 - TBA
- 21 - Comedy central - East
- 22 - TBA
- 23 - E! - Entertainment
- 24 - TBA

Now in a pile of otherness

EWTN to move from G3-10 to G1 - 11
VCC Shopping Channel is on Spacenet 1 XPDR 17
get this one - on G2 - 23 - Funeral Director's Tele-conference - theme - Trauma Embalming - No - I didn't watch it.....

Sky High TV - Spacenet 1 XPDR 23
Encore has moved from G3 to G1 XPDR 3
ANA on F2 XPDR 1 may have been testing in Leitch - someone was and they are usually on this transponder. The Leitch system has been noted on several Morelos transponders lately on an occasional basis - XHDF, XEW and others - the shape of things to come from Mexico? PanAmSat Ku side is becoming quite the International Bird - in addition to 24 hour feed of NHK Tokyo and the evening North American service of Belgrade TV, Fuji TV Japan can be found many evenings with its Paris to Tokyo relay via the US. Also noted on Dec. 13 2100 to 2145 GMT was a feed of Soccer scores from ANI Greece. Almost all of these services are in NTSC and are US beamed which makes them receivable with a normal sized KU comp. dish.

Also on PanAmSat - c-Band - XPDR 2 - Multicanal Omnivision a Venezuelan service which may be originating in the USA since it has an audio Sub-carrier morse ID. Hispasat has been testing at 31 West in PAL and NTSC on the KU side - again with a beam directed to the US
SUR on Spacenet 2-22 is now VC2, but the feed on Intelsat 506 at 50 W is not - but signal varies from super to none since the satellite is in inclined orbit.
2 services in PAL have been noted on Intelsat 502 at 21.5 West, but signal is too weak and variable to ID.
Intelsat 502 is also in inclined orbit which causes this.

A new Childrens Channel in Spanish has been noted at times on Spacenet 2 XPDR 24.
Request PPV is now available to the Home Dish user. As mentioned last issue they will be moving to C4.
BBC 1 Southeast (London area) and Sky Television continue to share XPDR 14 on Intelsat 513 at 53 W.
BBC world Service has been noted on Intelsat 601 at 27.5 W in NTSC (C-band)
The Caribbean Satellite Network debuted in Galaxy 3 XPDR 7. An eclectic mix of Rap, Blues, Jazz and Reggae and other stuff that is mostly NOT Caribbean!
Some up-coming new services recently reported in Broadcasting Magazine and other sources include:
Global Village Network (which had been testing on E2-23)
How-To Channel
Game Show Channel
Crime Channel
Game Channel
Cowboy Channel (where have I heard of this before)
Americana Television
FYI - The Consumer Channel
Golden American Network
Music Vision
Talk TV Network
Viva Television Network
ZYV Music Network and others.
Please note the Deutsche Welle on C4 - 5 uses a different sound matrix - 6.2. Also they have several radio sub-carriers on the same transponder including an English translation channel.
I started this column with the idea it would be short. It isn't. That's all from this end. See you in 30.
Good DXing and HAPPY NEW YEAR!

change

UHF/UHF UTILITY DX

(CONTINUED FROM 11)

COAST GUARD DELETIONS

VAE- 162.40 NOOIKA BC

UCK- 161.775 MINGAN PQ

LOGGINGS

Just one sole solitary logging.. hopefully things will heat up in the spring!

WILLIAM R. HEPBURN - 35 LOCKWOOD RD - BRAMPTON ON - L6Y 4T7 EDT

Rcvr: Realistic PRO-2004 Ant: vertical dipole in attic

SEPTEMBER 1992

14 TR 0010 WXM-49 162.425 IL MARION

642 NWR Goreville xmtr

This was my 2nd reception of this station - better than the first time with good clear copy -- only occasional interference from annoying 162.420 tone pagers.

>>>> If you hear any PSB DX .. be sure to send it this way <<<<

73s. *Bill*

NORTHERN FM-DX

GREG CONIGLIO
5100 GLENWOOD DRIVE
WILLIAMSVILLE, NY 14221

For DXers in: MA, NH, VT, CT, MA, RI, NY, PA, NJ, OH, MI, IN, IL, WI, MN, IA, NE, SD, ND, MT, WY, ID, WA, OR, AK, Canada

JANUARY 1993 DEADLINE: The 5th LOG CUTOFF: 2 months from when mailed

1992 was a poor e-skip season in most regards. Even the mediocre year last year beat it in most instances, having 650 more loggings, and 6 more says for example. The total no. of loggings this year (2640) represents the worst season since 1988, and the 4th worst since my records begin, in 1981. There was also the fewest number of days with skip reported ever: 54. Oddly, both May and June had more loggings than last year, but July 1992 was absolutely pitiful. Even AUGUST '91 was better. Compare the figures to the 91 skip report in the January 1992 VUD. Hopefully next year will be better!

1992 E-skip report.

The top 20 openings in 1992

Note: openings in October and November not included

Reports taken from Northern and Southern FM DX, up to the December 92 issue

DATE	TOTAL	rep	avg	MUF	high
1. JUNE 13	414	25	16.56	107.9	49
2. MAY 25	372	26	14.31	107.9	48
3. JUNE 14	298	13	22.92	107.9	53
4. JUNE 17	197	17	11.59	107.9	46
5. JUNE 18	153	12	12.75	117.6	45
6. JUNE 19	153	15	10.20	107.5	30
7. MAY 24	137	17	8.06	107.9	20
8. MAY 8	118	15	7.87	107.7	22
9. JUNE 16	86	8	10.75	107.9	38
10. JULY 7	79	12	6.58	106.7	17
11. MAY 12	62	8	7.75	106.3	36
12. JUNE 15	43	7	6.14	102.3	16
13. MAY 23	43	7	6.14	106.3	10
14. AUGUST 1	39	3	13.00	107.9	36
15. AUGUST 5	33	1	33.00	106.9	33
16. MAY 14	29	2	14.50	106.7	15
17. JUNE 5	29	9	3.22	105.1	7
18. JUNE 10	26	5	5.20	104.1	14
19. JANUARY 6	27	4	6.75	103.1	13
20. MAY 13	25	1	25.00	107.7	25

TOTAL (54 days) 2640 avg of 48.89 loggings per skip opening, average MUF: 101.38

Key:

total = total number of loggings reported that day

rep = number of DXers reporting noting skip that day

avg = average number of loggings per DXer that day (total + rep)

MUF = maximum useable frequency reported that day

high = most loggings reported by a single reporter that day

Breakdown by month:

MONTH	total for month	number of days	avg	MUF
JANUARY	38	3	12.67	98.57
MAY	840	14	60.00	101.10
JUNE	1523	21	72.52	103.19
JULY	140	11	12.73	97.64
AUGUST	99	5	19.80	104.5

(openings in October and November not included)

Breakdown of MUFs

	no. openings	percent
up to 108.0+ Mhz	1	1.85%
up to 107.9	8	14.81%
up to 105.1	25	46.30%
up to 100.1	33	61.11%
up to 98.5	36	66.67%
up to 96.1	38	70.37%
up to 92.1	49	90.74%
up to 88.1	54	100.00%

NORTHERN FM DX

DAVE NIEMAN-12284 NICE ROAD-AKRON, NEW YORK 14001-9529

Equipment: Carver TX-11 tuner IF filter modified. Channel Master Stereo Probe 9 at 36 feet on crankup tower, Channel Master 3617B VHF at 23 feet into phase box. Alliance HD-73 rotor and RG-11 coax. New loggings are underlined. New call [K K K K]. New propagation mode WWW.

NOVEMBER 1992 DX

10 Groundwave
1100 WCOU 88.3 NY Warsaw, ID, gS
new local!! 19

NOVEMBER 1992 DX

26 troposcatter
1407 WJYJ 90.5 VA Fredricksburg, ID, gS 327

WCOU 88.3 was on testing for a couple days at the beginning of the month. They are now off-the-air waiting for final FCC approval. Dave

DAVE NIEMAN-HO STA GEH, ROAD-ROCK CITY, NEW YORK

Equipment: Technics ST-8080 tuner IF filter modified. Antennacraft FM-10 at 25 feet, RG-6 coax and Radio Shack rotor. New loggings are underlined. New call [K K K K]. New propagation mode WWW.

NOVEMBER 1992 DX

5 tropo
1109 WZXR 99.3 PA South Williamsport, call, rS 92
11 troposcatter
1411 WMJX 106.7 MA Boston, "Magic-106.7", rMS 380
25 troposcatter
0859 WIUP 90.1 PA Indiana, s/on, S 103
NOVEMBER 1992 DX
1 tropo & scatter
1207 WEAZ 101.1 PA Philadelphia, mrs 226
1300 WMXW 103.3 NY Vestal, ID+ "Mix-103", rMS 124

NOVEMBER 1992 DX

8 tropo
1137 WRVY 97.3 PA Harrisburg, call+ "The River", rMS 147
22 tropo
1237 W 102.7 NY Webster, "WNYR" rMS 98
27 troposcatter
1255 WZXL 100.7 NJ Wildwood, call, rS 284
29 troposcatter
0936 WQXR 96.3 NY New York, call, cS 248
1142 W 93.1 PA "The Wizard", rS

99.3 Emporium PA has greatly improved their signal and with a country-rock format use the non-ID "Y-99". November 29 logging on 93.1 could be a new translator for one of the stations of "THE WIZARD" mini network in Northern PA. Dave



Seasons Greetings

MICHAEL HAWK, NIOSY - 10212 P ST - OMAHA, NE 68127-2130

Equipment: Kenwood KT-815 tuner, FM-10 up 30', variable 20 dB attenuator, rabbit ears for primitive phasing

OCTOBER DX

1 Tr
2243 KMSC 88.3 IA Sioux City, p; not had 91 for 10 watts!
2 Tr
1945 KIOA 93.3 IA Des Moines, good with 129 8 mile local KRRK phased
2030 WJOD 107.5 IL Galena, k 301
2047 KDFX 102.3 IA Dubuque, Fox 102 290
2200 WERN 88.7 WI Madison, WI Public R. 366
3 MS
0756 WRJB 107.5 SC St. George, "The stn 1062 that gives you Charleston's best and most..."
3 CW
2300 [KYNN] 101.9 NE Lincoln, now k, & ID 44 Omaha's Young Country"; are //1480. Really trying to get in on Omaha's market, which has only 3 k stations.

They always ID with Omaha and Council Bluffs, & sometimes don't mention Lincoln at all.

4 Tr
0930 KEYE 102.1 MN St Paul; K-102 298
6 CW
1600 KXRT 103.7 IA Atlantic, now K, ID as 48 KT-103; Although Atlantic is 48 miles away, the transmitter is about 20-25 miles away
NOVEMBER DX
11 Tr
1553 WGGC 107.5 IL Chicago, GCI 438
1558 WBBM 96.3 IL Chicago, B-96 438
1601 WLS 94.7 IL Chicago, news 438
1607 WWWW 106.7 MI Detroit, "W4 Country" 674
1608 WQJO 105.1 IL Evanston, SS 435
1609 WJMK 104.3 IL Chicago, Oldies 104.3 438
1619 WBBZ 103.5 IL Chicago, The Blaze 438
1630 WMLK 102.1 MI Kalamazoo, NPR 547

A few stints of Indian summer didn't bring much in the way of tropo. The 11/11 opening was on a cool and cloudy day (about 40 degrees), with rain to our south. Even though Cycle 22 is really down from last year, 28 MHz openings to south Europe have been occurring quite regularly. As always, if anyone is interested in setting up a schedule on 10, 15, 20, or 40 meters, drop me a line. Next month will have my results from the Geminids. 73

JIM RENFREW - 61 WILCOX STREET - ROCHESTER, NEW YORK 14607-3832 (716) 461-2717

Only one item to report: On October 28, at 1400, I heard WJZR 105.9 Rochester testing. An open carrier suddenly while I was on 105.9 hoping for DX. Checked back around 1430 to hear Harry Connick Jr. jazz vocals, then ID "105.9 WJZR, Rochester", then off. Call to station (288-5020) gave evasive answers to all my questions. They expect to be full time "within about a month". Transmitter is along East Main St. They clammed up tight when I asked about the format! Did say that today was first test. There goes another one! Only open frequencies around here are 88.9, 90.9, 91.9, 93.3 (soon to go), 94.7, 104.9 (October VUD says Greece, NY translator), and 107.3 (also a new CP) (Hate to be the bearer of bad news, but 88.9 may go soon too, as WCIV Canandaigua is expected on-gc). Also: 102.7 not noted very often, not on regular service. Not sure if this will be an LMA or not (Last calls for them I have heard were WNUL. The only thing I have ever noticed is relay of WNYR 98.5-gc). 88.9 item reported previously is Watertown.

JEFF FALCONER - BOX 63 - CLINTON, ONTARIO N0M 1L0

Equipment: Magnum DYNALAB FT-101A, Probe 9 at 27' with rotor, RG-11 feedline, Magnum DYNALAB 205 amp

SEPTEMBER 1992 DX		OCTOBER 9 TrS	
13 Tr-all Chicago (332 mi) and Milwaukee (323 mi) in		1715 CKRZ 100.3 ON Oshweken, community calendar type program\$	77
1403 WMIL 106.1 WI Waukesha, k\$	327	1721 CJMJ 100.3 ON Ottawa, r\$, Magic 100	313
1416 WJNR 101.5 MI Iron Mountain PackersFB	355	1727 CHEZ 106.1 ON Ottawa, r\$, ID, ads	313
1436 WXLG 102.3 WI Waukegan, Hot 102.3, r\$	330	1819 WKSJ 102.7 PA Williamsport, o\$, Kiss	284
1441 WGLB 100.1 WI Pt. Washington, mb\$, ID	319	2135 (WERT) 99.7 OH Paulding, Paulding Panthers football game	232
1451 (WKKV) 100.7 WI Racine, r\$, V-100 Jams ex: WBZN	322	10 TrS	
1512 WYLL 106.7 IL Des Plaines, g\$, ID	341	1457 WPKK 91.9 KY Louisville, c\$, ID	430
1521 (WBBZ) 103.5 IL Chicago, r\$, The Blaze ex: WFYR	332	1659 CBON21 104.9 ON Gogama, FF mono	280
1523 WNIZ 96.9 IL Zion, c\$	328	11 TrS	
1524 WNIB 97.1 IL Chicago, c\$ // 96.9	332	1137 WTUE 104.7 OH Dayton, r\$, ID over the usual WIOT Toledo	302
1531 WTMX 101.9 IL Skokie, ro\$, The Mix	334	1146 WKEM 104.7 NY Fulton, r\$, 104.7 KixFM	257
1550 WYCA 92.3 IN Hammond, g\$	334	1340 CJBCI 95.5 ON Belleville, FF mono	210
1610 (WILL) 95.1 WI Kenosha, ro\$, 95 Will Rock, ex: WJZQ	325	1353 (WRQI) 95.1 NY S. Bristol, r\$, ID, ex: WZSH	210
26 TrS		1427 WKSJ 102.7 PA Williamsport, 20 second MS burst with antenna west. My closest MS catch so far, maybe airplane scatter?	284
1446 CBON28 91.9 ON Chapeau, FF mono	305	1430 WRVM 102.7 WI Suring, g\$	351
1957 W220A1 91.9 PA Meadville, g\$ // WCRF	154	17 TrS	
2054 (WBZX) 99.7 OH Columbus, r\$, The Blitz ex: WMGG	264	1431 WKKW 106.5 WV Clarksburg, very weak w/ ID during football game	306
27 TrS		18 MS/TrS	
0045 WAPQ 98.7 OH Crestline, r\$, Apple	205	0129 WXCX 103.7 MD Havre de Grace, calls ant into k\$, STATE 39 heard.	397
29 TrS		0149 WOYX 93.5 PA Clearfield, r\$, ID	238
1804 WHCM 99.1 WV Parkersburg, k\$, Power Country 99	299	0153 KKYK 103.7 AR "...in Little Rock..."	840
1810 CKRZ 100.3 t ON Oshweken		0323 KEYN 103.7 KS Wichita, "when the KEY..."	
1929 CFLZ 91.9 ON Niagara Falls, tourist info and MONO, weak	127	22 TrS	
30 TrS		1732 WCSM 96.7 OH Celina, r\$, Mix 96.7 mixing with CHYM.	263
1900 WGNB 89.3 MI Zeeland, g\$, FM89	232	24 TrS	
1913 WJLN 89.9 MI Traverse City, g\$	217	0054 KUUL 103.7 IA Davenport, o\$, Cool FM	487
1917 WCCW 107.5 MI Traverse City, o\$, Oldies 107.5, Had heard this before but forgot to put it into my log	217	NOVEMBER 1992 DX	
OCTOBER 1992 DX		11 Tr-all Chicago/Milwaukee in	
1 TrS		1848 WIBA 101.5 WI Madison, ads, ch27 wx\$	395
2143 WSAE 106.9 MI Spring Arbor, g\$, ex 89.3	182	1850 WZEE 104.1 WI Madison, r\$, Z-104	395
3 TrS		1904 WPNE 89.3 WI Green Bay, c\$, ID	328
1242 (WGRF) 96.9 NY Buffalo, r\$, 97 Rock, ex WGR, WGRQ, tough since WBTL came on air	142	2224 WPRE 94.3 WI Prairie du Chien, Bucks BB MONO, previously via MS	485
5 TrS		2232 WOLX 94.9 WI Baraboo, Oldies 94.9\$	412
1755 WBFH 88.1 MI Bloomfield Hills, r\$, "Detroit's most powerful high school station"	112	2256 WPKR 99.5 WI Waupun, ads\$	360
6 Tr/TrS-Chicago and Milwaukee good		14 TrS	
1707 WJCH 91.9 IL Joliet, g\$	363	1335 WVCN 91.9 PA California, r\$, Power 92 request line at 938-3000.	260
1721 WCLS 100.7 MI Oscoda, rm\$, ID, recently moved from 100.1	106	1642 WNED t 94.353 strong open carrier off freq and WNED missing from 94.5, leaving WYYY and WWSW (They were on and off that evening-gc)	
2158 WSSU 91.9 IL Springfield, j\$, good	496	1939 CJBC 90.3 ON Toronto, poor with FF talk, c\$ mixing with CBEG	108
2209 WSHW 99.7 IN Frankfort, r\$, Shine 99	344	2320 WHZR 103.7 IN Royal Center, r\$ Hoosier 103	317
8 TrS		2328 WFTU 103.7 IN Bloomington, weak ID	402
1939 (WNUC) 107.7 NY Wethersfield, k\$, New Country 107.7, Ex WEZQ, etc	179		

JEFF FALCONERS comments.

Back in April I moved my small log periodic antenna (used with my Icom R7000 for TV DX) to the same mast as my Probe 9. FM DX suffered as a result of interaction between the two antennas. So I recently moved the log periodic back to its' old spot on the chimney and replaced by old battered Probe 9 with a nice shiny new one. I also replaced the old balun (which was also fried) with a RDX Labs UA60 model. Now I'm back in the swing of things with a more efficient FM DX system. I sprayed all rivets on the new Probe 9 with acrylic spray to slow down rusting. As has been mentioned by other DXers the rivets on Probe 9s tend to rust over time, and hinder performance (my old Probe 9 will attest to that). A few nice tropo loggings here but not much else. Surprised to have an excellent opening to Madison, Wisconsin area on November 11. Logged every FM and TV station in Madison. Was also pleased to log Maryland here for the first time. Should be easy from here but.....Now you need Connecticut for all states east of the Mississippi. 73 for now. Jeff

dBRUCE HALL - 5 STIRTON AVE - BRANTFORD, ONTARIO CANADA N3T 1E2

Equipment: JVC-S201 receiver with 3-110 khz filters, Kenwood tuner KT1000 with 1 110 khz filter, Sleuth 205 amp, Probe 9 fed with RG6 at 50 feet AGL, crown rotor (kilometres in use)

OCTOBER 1992 DX		November 14 Leonid MS	
26 GW		0801 WMTZ 93.9 GA Martinez, r"Martinez, GA"	
0900 CFRU 93.3 ON Guelph, p\$, "Dreamy Great Radio in Stereo on CFRU 93.3 in Guelph, Ont. It goes in one ear and stays there"	48	17 Leonid MS, TrS	
27 GW, Tr		0100 WEEL 95.7 OH Shadyside, o, "95 Point 7 Wheel FM, good time R&R"	352
0622 WHSB 107.7 MI Alpena, r, HSB	332	0201 KFUD 99.1 MO Clayton, c "99 KFUD", like skip MS has relogs too! \$&(#\$	980
0700 CFMU 93.3 ON Hamilton, p\$, "Give me a call at 5289 triple 8, CFMU redefining radio"	38	0600 WHCM 99.1 WV Parkersburg, "WHCM P'ks burg-Marietta, 25000 watts of continuous country music, CBS news	439
28 TrS, GW		0700 WINC 92.5 VA Winchester, Wink FM	472
0815 CBEF 103.1 ON Leamington, tm, CBC FF "Bonjour, Ici Radio Canada"	224	20 GW	
0917 WKGQ 102.7 NY Cape Vincent, rm "The station with the best music mix, Light Rock 103" // WTQJ 103.1 Carthage, NY	337	0700 WCOU 88.3 NY Warsaw, Family Life Net. testing, A great skip freq kaput (I'll say!-gc)	176
0940 CKWF 101.5 ON Peterborough, op\$ The Wolf. The Best classic rock, rock, rock!	206	22 TrS	
NOVEMBER 1992 DX		1000 WQES 105.5 NY Oswego, rm, Star 105	307
11 TrS		1024 WHPA 104.9 PA Holidaysburg, mr, call	337
0642 WAIR 92.5 MI Atlanta, o, Oldies 92 and 94FM, IDs with 94.3 WTRV Leland	373	1036 WELA 104.3 OH E. Liverpool, k, calls	277
0830 (CFMO) 101.1 ON Smiths Falls, "This is FM101 rm, ex: CHEQ, new format and nonID	395	23 MS	
		0713 WQST 92.5 MS Forest/Jackson, y! "How you doin' I'm surviving what we went through..... 1:30 at Collins"	1371

73 dB

GREG CONIGLIO - 5100 GLENWOOD DRIVE - WILLIAMSVILLE, NEW YORK 14221

Equipment: see previous VUDS

NOVEMBER 1992 DX	
12 TrS-many locals off but not much in	
2312 WLTI 92.9 PA Pittsburgh, rm, finally	185
2320 WGTZ t 92.9 OH Eaton, top 40 music	
14 TrS	
1100 WTLR 89.9 PA State College, g\$, legal ID local WFBF Buffalo off the air still from the 12th	154
28 TrS	
1054 WPOC 93.1 MD Baltimore, calls, bragged about being the CMA station of the year	274
DECEMBER 1992 DX	
1 GW	
1100 C--- 92.5 ON Toronto, new on the air testing, Rawco Communications, dominates W...EE	59

Not much DX lately at all. The stations off the air on the 12th of November were due to a terrible windstorm with sustained winds of 50 mph at the Buffalo Airport which is nearby, and gusts to 73. The antennas were fine but we lost a tree. I had a hard time DXing because I was getting much more static than normal. Perhaps this was due to the heavy winds? 94.5, 99.5, 102.5, and 107.7 were completely blank, except for electrical static noise. Thanks Matt Sittel, Bruce Hall, and Dave Nieman for sending logos, and also Jerry Monroe. In station news, 100.1 Lebanon, Pa. is now WQIC and top 40 "Q100", Augusta, Ga. has a modern rock station now. WCHZ 95.1: "Channel Z", and WRSF 105.7 NC has gone country, "Dixie 105.7".

SOUTHERN FM DX

Danny Buntin
1312 N. Skyline
Stillwater, OK 74075

JANUARY 1993

DEADLINE: 14th

SOUTHERN FM DX is for reporters from: AL, AR, AZ, CA, CO, DC, DE, FL, GA, HI, KS, KY, LA, MD, MO, MS, NC, NV, OK, SC, TN, TX, UT, WV.

HAPPY NEW DXFUL YEAR IN 1993!

Doug Allen, w2crs, P. O. Box 5646, Woodland Park, CO 80866

Equip.: Onkyo T 4087 IF modified, FM-13 at 50 feet

7/3 ms (10 second burst)

0800 KCLC 89.1 MO St. Charles, ID

7/4 tr

0740 KEZH 101.5 NE Hastings, "KZ Country"

0808 KBRxt102.9 NE O'Neill

7/6 tr (unusual mid-day opening from here)

0751 KRDF 98.3 TX Spearman, strong

0912 KSNR 106.9 OK Clinton, ex-KKOC

1020 KBBS 92.7 OK Guymon

1030 KWFX 93.5 OK Woodward, "the Fox"

1100 KQLI? 95.3 OK Lawton, western OK wx,

ex 94.3 or KBZQ

1105 KAIT 100.5 OK Okla. City

1128 KMOD 97.5 OK Tulsa

1130 KOSU 91.7 OK Stillwater

1151 KFOR 99.3 OK Ponca City, "99 FM KFOR",

(station #1000)

1200 KOFM 103.1 OK Enid, k, ID

1205 KCEV 88.3 KS Wichita, g

8/5 Es

1842 KMEL 106.1 CA San Fran, ID

1843 KUKI 103.3 CA Ukiah, k, singing ID

1845 KFOGt104.5 CA San Fran

1846 KRPO 104.9 CA Rohnert Park, ads, "Q105"

340 watts?

After three years of hyper FM DXing activity, I spent the first half of the year on "personal growth" type things, was out of town for 14 days in June and spent over three weeks of July traveling by car with my wife to Maine and back, thus missing most of the Es season. Since late August I have spent far too much time on hyper amateur radio DXing activities. (MY personal growth stuff was in part an attempt to be less hyper! Guess I need a refresher course already!) Thus, only 28 new ones, 1992, on FM as of this report. The August Perseids shower was very good again this year, though the peak wasn't quite as spectacular as last year's. I worked 21 stations in 15 new grids on 144 and one station and one new grid on 222 MHz. I used 3 meter FM (88-108 MHz) as an indicator of when the 144 ms path was open with very good results again this year. In late August, I bought a used 1500 watt linear and have been working HF DX this fall. I'm only shy a few countries on 80 of five-band DXOC and I'm closing in on 300 countries total. In September, I got on packet radio for the first time, mainly for the DX Cluster but can be reached as follows: W2CRS @ WOLKD CO USA NA.

One of the problems with being on packet is that the TNC causes about 10 db of noise on three meters, hurting my FM DXing ability. Much, much more, but it will have to wait to next report.

Douglas E. Smith, 14 Brookside Court, Nashville, TN 37209-4503

Some vacation DX....

11/8 tr (from Memphis motel room, w/ GE Superradio)

2200 KABF 88.3 AR Little Rock, ID, poetry show 150

KOLL 94.9 AR Maumelle, oldies 150

11/9 gw (from I-40 midway between Memphis & Little Rock)

0940 unID 92.1 ?? alternative format, slogan "Rebel R. 92.1, the

Mid-South's New Music Leader."

11/12 gw (from Natchez Trace Parkway, near Kosciusko, Miss.)

1300 WRNO 99.5 LA New Orleans, ads for WYNK 101.5 LA Baton Rouge, local ads 190

WVUE-8 and Metarie 207 WGTX 104.1 AL Atmore, rp 190

WIGE 100.7 LA Baton Rouge, "The Tiger" 73.

SFM Editor's note: Well, I hope everybody's 1993 is better than 1992, especially for the evening DXers who really got stuck with the slim pickings. 73.



Prepared For WTFDA/VUD by Tom Bryant, 849
Todd Preis Drive, Nashville, TN 37221.

Thanks to Bill Eckberg for the feature material on CHCH-TV. It's a photocopy of an article that appeared in a mid 1950s publication from the National Radio Institute... a correspondence course electronics school established about 1940. The page size didn't work well with the VUD format, so there is unrelated space filler on pages 20 thru 22. There's a lot of vintage equipment pictured, and the text is detailed without being tedious. Hope you enjoy it. HAPPY NEW YEAR !!!

A Tour of Television Station CHCH-TV

With NRI Graduate J. T. Stacey,

Assistant Chief Engineer

In April, 1950, an inspector-aligner of domestic receivers in Montreal named J. T. Stacey enrolled in NRI. Within a short time his employer, RCA Victor Co., Ltd., promoted him to radar technician. His ability and training next took him to Rediffusion Inc., as Duty Engineer and Maintenance Engineer on video terminal equipment. Then, just three and one-half years after enroll-

ing with NRI, Thomas Stacy was appointed Assistant Chief Engineer of Television Station CHCH-TV in Hamilton, Ontario.

When Graduate Stacey arrived in Hamilton, in November, 1953, CHCH-TV was still in the planning and early construction stages. The next six months were filled with hard, but satisfying work.



Fig. 1. Assistant Chief Engineer J. T. Stacey (left) and Technician Leslie Meszaros (right), both NRI graduates, are shown inspecting video equipment in Master Control of Television Station CHCH-TV, in Hamilton, Ont., Canada.

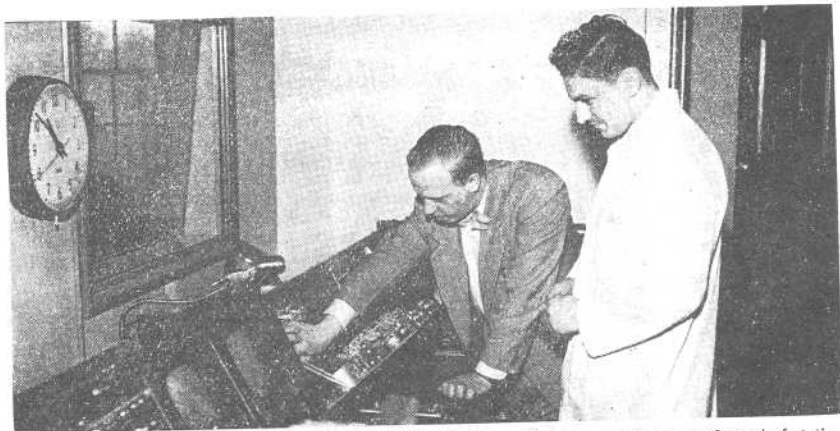


Fig. 2. Graduate Stacey (left) and Meszaros (right) looking at audio equipment in Master Control of station CHCH-TV.

On June 7, 1954, when CHCH-TV began regularly scheduled telecasts, the engineering staff had reason to be proud. The layout design and all installation work, with the sole exception of the antenna, the staff had done themselves.

CHCH-TV operates on Channel 11, with a radiated power of 42.9 kw video and 25.75 kw audio. The studios are located in the city of Hamilton and the transmitter is five miles east of the city on a 900-foot escarpment.

There are four studios available: Studio "A" 50'x50'x18', Studio "B" 30'x15'x14', Studio "C" 13'x11'x11', and Studio "D" 200'x80'x30' with space for an audience of 4,000 people. Four RCA studio cameras are used for live pick-ups. Two Eastman Model 250 16-mm film projectors, a Grey Telejector for 2"x2" slides and a Grey Telop for 3 1/4"x4 1/4" slides and opaque material working in conjunction with two RCA Iconoscope chains provide film and slide sources.

The station is affiliated with the Canadian Broadcasting Corporation, and also receives originations from NBC, ABC and DuMont.

The engineering staff is made up of about twenty men. A second NRI Graduate, Leslie Meszaros, holds a key position on this staff as maintenance technician.

Assistant Chief Engineer Stacey has kindly arranged a guided tour for us by means of photographs of the station.

The engineering operation of the station centers in Master Control. At this point all audio and video signals are switched and routed around the station and all sources are monitored for quality and level. In Fig. 1, we see Mr. Stacey and Leslie Meszaros inspecting one of the Master Monitors. Also in view on the console are the Master Video Switcher and Monitor, Preview Switcher and Monitor, and Remote Controls Panel. Behind the men are the film control units, special effects generator and the racks holding the video patching facilities, distribution amplifiers and the amplifiers associated with the switchers.

Fig. 2 shows us the audio end of the master control console containing an RCA three-channel audio switcher, which our hosts are inspecting, and beyond that an RCA Audio Console.

In the projection room one film projector and the Grey Telejector feed into the same iconoscope, while the Telop and second film projector fed the remaining camera. The physical arrangement of the projectors and cameras is shown in Fig. 3. Since the Telop and Telejector are both magazine loaded, and all equipment can be controlled remotely, extreme speed and programming flexibility can be achieved even during periods of peak operation.

The main studio control room (Fig. 4) is so arranged and equipped that the production staff may preview all studio and film cameras without switching and still obtain an unimpeded view of

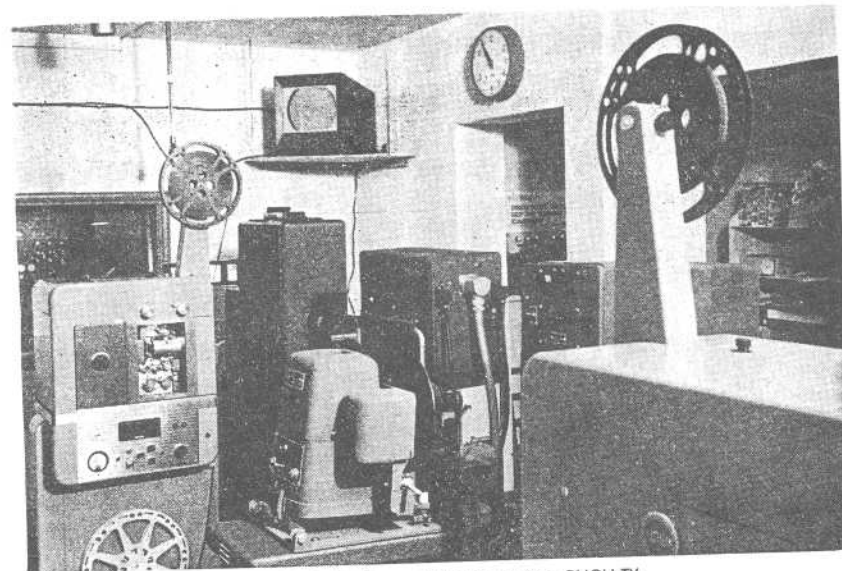


Fig. 3. Projection Room at Television Station CHCH-TV.

the studio. Along the far side of the room is the video operating position where the studio cameras are controlled.

The audio man operates in a raised booth in the rear, walled off from the rest of the main studio control. From this booth the audio man has a clear view of the studio floor and is protected from the distracting noises of the main control room.

Duplication of facilities in Master Control and Main Studio Control provides for transfer of program switching from one to the other. This duplication of switching facilities, together with flexible switching and patching, makes it possible to feed video to the transmitter line over four routes and audio over five routes.

All operating locations are tied together by multiple intercommunication circuits. The freedom from fixed signal channeling and complete coordination obtained by means of the intercoms simplify special operations and help to maintain program continuity in the event of equipment failure.

A five and one-half mile cable and microwave link connects the studio with the transmitter.

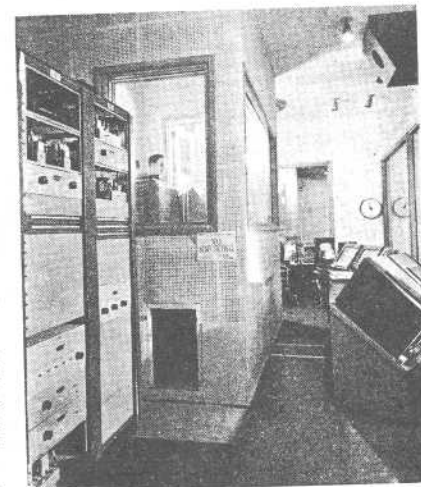
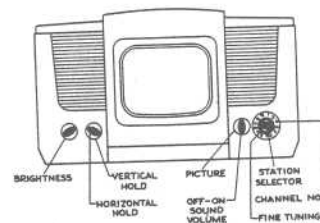


Fig. 4. CHCH-TV's Main Studio Control Room.



"I notice it only needs adjusting when the girls are on."
Reprinted from Technician Magazine, Caldwell-Clements, Inc., 480 Lexington Ave., New York, N. Y.



RCA VICTOR
TELEVISION RECEIVER
MODEL 8TS30



Fig. 5. CHCH-TV Audio and Video Transmitters and Transmitter Control.

The transmitters used at CHCH-TV are RCA Model TT10A. The three bays comprising the audio transmitter, the power control panel, and the power bay for the video transmitter may be seen in Fig 5.

The outputs of the two transmitters are fed to the diplexer where they are combined and fed to the antenna in a common transmission line. The diplexer and its connecting lines are shown in Fig. 7.

The transmitter console has audio and video switching facilities, a picture monitor and two turntables which are used to furnish recorded music during test pattern periods.

The antenna rises to a height of 540 feet above the ground. This antenna is of the type known as the "wave stack." As can be seen in Fig. 6, this antenna resembles a factory chimney. Instead of a conventional transmission line between the transmitter and antenna, the center of the stack forms a wave guide. Power is coupled into the stack by means of a probe and coupled to the radiators in a similar fashion. To comply with Government regulations, the antenna is highly directional with maximum radiation to the west of Hamilton.

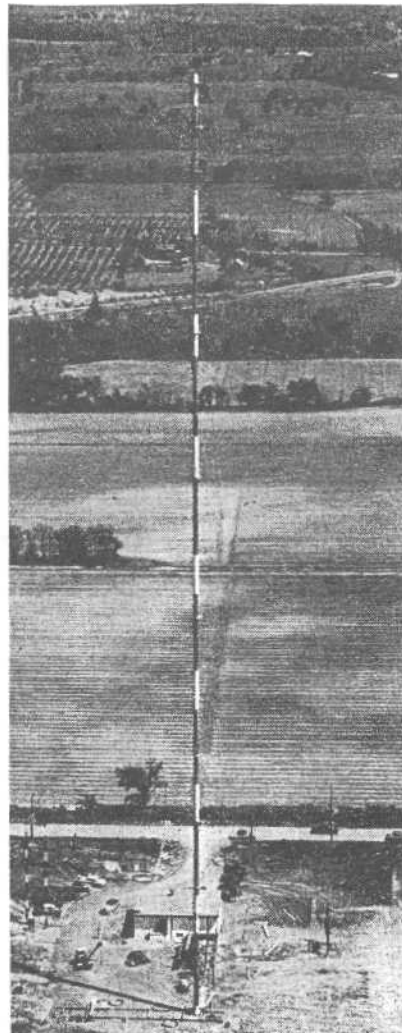


Fig. 6. CHCH-TV "Wave Stack" Antenna. Notice the resemblance to an ordinary factory smoke stack. The antenna is actually a hollow wave guide, probe fed at its base.



The Model 22A21 (or 22AX21) Television Receiver is a 22-tube, AC-operated, direct-viewing, 7-inch table model. The receiver is complete in one unit and is operated by the use of seven front-panel controls. Features of the receiver include: full continuous coverage of the thirteen television channels; FM sound system; and reduced-hazard high voltage supplying 5000 volts to the second anode of the picture tube.

SPECIAL REPORT

Your votes are in and counted. A total of 24 votes were received at post office box 514 by December 1st. Here are the results and some of your comments.

WOODSTOCK, GEORGIA

Host: John O. Broomall

3 VOTES

NASHVILLE, TENNESSEE

Hosts: Tom Bryant and Doug Smith

21 VOTES

YOUR COMMENTS:

"Nashville is my vote, would make for a great vacation"
 "Woodstock, Georgia very ideal as it's close to Hartsfield, the best airport in the U.S.A."
 "Nashville, Tennessee--Music City U.S.A., The perfect location for anything. P.S.; I won't be in Woodstock if it was--Been There!"
 "as they say in Chicago, vote early & often HI--consider this a vote for Nashville"
 "for next year's convention site, I vote for Nashville, Tenn."
 "Convention site: one vote for Nashville, PLEASE!"
 "Here is my mailing label: and my choice (vote) for the 1993 Convention: NASHVILLE, TN (it's easier to get to from MO--that's why it's my choice)"
 "Not to be a trouble maker...but after the undiscussed debacle at Pittsburgh...I would like to see some assurances that, the personal reputations of Tom, Doug, and John aside, there would be a guarantee of a convention to be held. Where were the WTFDA "officials"? Second, now can you ask the membership to vote when the dates (proposed) are not included, also? I could quite possibly attend a convention held between June 1 and one week prior to Labor Day; I cannot attend others, due to job (school) conflicts. With these reservations, I would vote for Nashville, TN, and hope that the convention would be held during the summer months."
 "I vote for Nashville, do not have any more meetings in Pittsburgh!"
 "Nashville? (provisional vote only! I don't have information such as date etc. which could affect it) actually, at that time of year, both places sound awful. Hope this reaches you by the 1st, it's probably a leap of faith to expect 3-day mail."

Thanks to all who voted. Stay tuned; a date, events and times will be in future issues of the VHF-UHF DIGEST. And see you in Tennessee!

PUBLISHER'S NOTES:

COLUMN NEWS After an incredible 20-year stint as V.U.D. FM NEWS editor, Dr. Bruce Elving has stepped down. We owe many thanks to Bruce for his dedication to the FM broadcasting side of the VHF DXing hobby. A couple of members believe that Bruce's run as editor may well be the longest anyone has ever done such a column in the history of DXing! Despite the DX world's rumor mills, Dr. Elving is not "retiring" from DXing. To the contrary, he's continuing to publish his excellent *FMedia!* newsletter. If you consider yourself an avid FM DX enthusiast, you should consider subscribing to this fantastic monthly publication, which features the latest station changes (VERY up-to-date), more news of small market FM stations and translators than we've ever seen in broadcasting industry publications, and information on FM subcarriers--all but totally ignored by other trade journals. Bruce even offers *FMedia!* at a special DXer discount of \$25/year, and can be reached at P.O. Box 336, Esko, MN 55733-0336. Way to go Bruce...and we can hardly wait to see the next *FM Atlas*.

NEW EDITORS ARE NEEDED Obviously, we now need a volunteer to do the V.U.D.'s FM NEWS section. Basically, the purpose of this column will be to list recent station changes, and will not be designed to duplicate Dr. Elving's *FMedia!* efforts. Essentially, it will be a listing of new stations on the air, and the more important changes in existing stations. We are now also in need of a new EASTERN TV DX section editor. Regrettably, Bill Nienajadly has informed us that a broken typewriter has made it impossible for it to continue. We've got volunteers typing up the remaining reports Bill forwarded, and they'll hopefully be received by next month. If you are interested a brief resume listing your qualifications will be welcomed by the publisher at P.O. Box 514, Buffalo NY 14205-0514. Incidentally, WESTERN TV DX does not appear this month due a total lack of reports, which puts Fred on a "forced vacation!" No reports usually means no DX; yes, winter is here!

THE COVER GUYS Thanks very much to the following members for providing cover material for recent V.U.D.s: September 1992 - Greg Coniglio; October 1992 - Tom Bryant; November 1992 - Charles Gauthier; December 1992 - Robert Twomey. This month's cover courtesy Dr. Bruce Elving.

-Bill Thompson