

Vhf-UhfDIGEST

The Official Publication of the Worldwide TV-FM DX Association

MARCH 1994

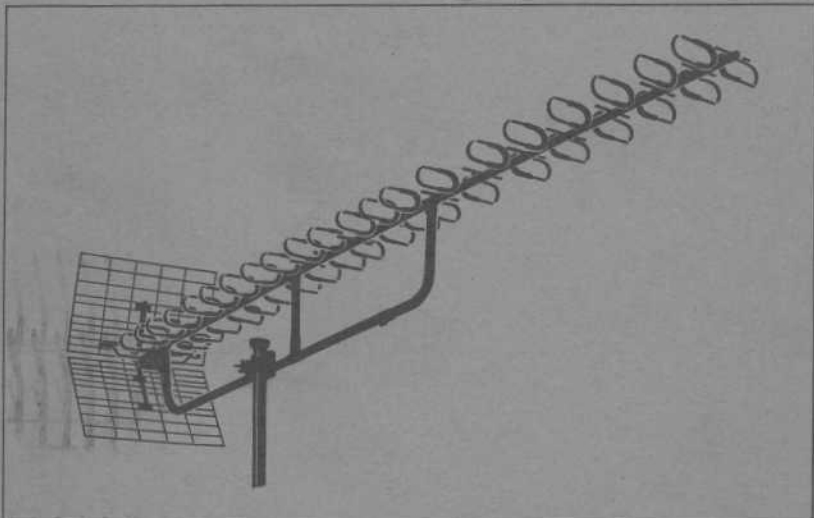
IN THIS ISSUE:

BETTER THAN A 7 FOOT DISH? A LOOK AT EUROPEAN UHF YAGIS

Super-Spectral-Antenne
Fesa 818 N 60



Hirschmann



Für die Fernsehbereiche IV/V, zum Empfang der UHF-Kanäle 21-60
For the UHF frequency range, channels 21 to 60
Pour la bande UHF, canaux 21 à 60



WORLDWIDE TV-FM DX ASSOCIATION

POST OFFICE BOX 514-BUFFALO, NY 14205-0514-USA.

OPINIONS EXPRESSED IN THIS PUBLICATION ARE THOSE OF THE INDIVIDUAL CONTRIBUTOR AND DO NOT NECESSARILY REFLECT THE VIEWS OF THE PUBLISHER OR BOARD OF DIRECTORS. WE RESERVE THE RIGHT TO EDIT MATERIAL TO MEET PUBLICATION STANDARDS. UNLESS PREVIOUSLY AGREED UPON IN WRITING, ALL MATERIAL SUBMITTED FOR PUBLICATION IN THE WFF-DIGEST BECOMES THE PROPERTY OF W.T.F.D.A.

REPRODUCTION OF MATERIAL FROM THE WFF-DIGEST WITHOUT PERMISSION OF W.T.F.D.A. IS PROHIBITED. INDIVIDUALS AND OTHER ORGANIZATIONS ARE GRANTED SUCH PERMISSION PROVIDING PROPER CREDIT IS GIVEN TO THE SOURCE.

ANNUAL DUES: United States: \$20.00
(payable in Canada: \$22.00
U.S. funds) Overseas: \$32.00



Hubert H. Humphrey



first class mail

11/94
WILLIAM N NOLLMAN
35 NYE ROAD
GLASTONBURY CT 06033

The M STREET RADIO DIRECTORY

A Complete Guide to US and Canadian Radio Stations

from the editors of
The M Street Journal

THE
M
STREET
RADIO
DIRECTORY

COMPREHENSIVE MARKET DATA:
U.S. and Canadian AM & FM Stations
Program Formats
Arbitron and Willight Ratings
The M Street Radio Markets
LMA and Duopoly Listings

CALL LETTERS

| | | |
|---------|-------|---------------------|
| KAAA | 1230 | Kingman, AZ |
| KAAB | 1130 | Butteville, AR |
| KAAK | 98.9 | Great Falls, MT |
| KAAW | 1310 | Dallas, TX |
| KAAZ | 87.9 | Bethany, MO |
| KAAN-FM | 95.5 | Bethany, MO |
| KAAP | 91.3 | Bemidji, MN |
| KAAQ | 105.9 | Allenton, NE |
| KAAR | 92.7 | Bum, MT |
| KAAU | 107.1 | Oakhurst, CA |
| KAAV | 105.7 | Avenal, CA |
| KAAW | 1090 | Little Rock, AR |
| KABC | 790 | Los Angeles, CA |
| KABD | 103.5 | Brainerd, MN |
| KABE | 102.7 | Lake Ozark, MO |
| KABF | 88.3 | Little Rock, AR |
| KABH | 95.1 | Shawnee, OK |
| KABI | 1560 | Atlanta, GA |
| KABK | 97.7 | Augusta, AR |
| KABL | 960 | Oakland, CA |
| KABL-FM | 98.1 | San Francisco, CA |
| KABN | 830 | Long Island, AK |
| KABQ | 1350 | Albuquerque, NM |
| KABR | 1500 | Alamo Community, NJ |
| KABS | 91.9 | Great Falls, MT |
| KABX-FM | 97.5 | Mason, CA |
| KACD | 91.3 | Alvin, TX |
| KACE | 103.9 | Englewood, CA |
| KACF | 1340 | Princeton, ID |
| KACH-FM | 96.7 | Princeton, ID |
| KACI | 1300 | The Dalles, OR |
| KACI-FM | 97.7 | The Dalles, OR |

MARKETS

Colorado Springs, CO
metro 341,300 TSA 564,700
M.S. rank 106 ARB rank 110 #4
Winter Arbitron

| | | | |
|-------|---------|----------------------|-----------|
| 740 | KSSS | Colorado Springs, CO | ACA |
| 820 | KVFR | Falcon, CO | op-new |
| 850 | KOA | Denver, CO | 4.3 NX-TK |
| 1040 | KZBR | Monte Vista, CO | RL |
| 1240 | KRDO | Colorado Springs, CO | 7 CW& |
| 1300 | KVOR | Colorado Springs, CO | 6.3 NX-TK |
| 1460 | KKCS | Colorado Springs, CO | 1.3 CW |
| 1490 | KXRE | Monte Vista, CO | SSe |
| 1530 | KCMN | Colorado Springs, CO | 2.2 ASA |
| 1580 | KWYD | Colorado Springs, CO | 3 RL/SS |
| 88.7 | KCME | Monte Vista, CO | FMTZ* |
| 88.7 | KUPC | Colorado Springs, CO | AP* |
| 90.5 | KTLF | Colorado Springs, CO | VA* |
| 91.5 | KRCC | Colorado Springs, CO | NXVA* |
| 92.9 | KSPZ | Colorado Springs, CO | 3.2 OL |
| 93.9 | KILJ | Colorado Springs, CO | 8.3 AR |
| 95.1 | KRDO-FM | Colorado Springs, CO | 2.5 SA |
| 96.1 | KBUJ | Mountain, CO | RC |
| 96.5 | KKFM | Colorado Springs, CO | 6.4 CR |
| 98.9 | KKMG | Pueblo, CO | 8.8 CH-BR |
| 99.9 | KVUU | Pueblo, CO | 6.2 AC |
| 100.7 | KGFT | Pueblo, CO | 7 RL |
| 101.9 | KKCS-FM | Colorado Springs, CO | 17.7 CW |
| 102.7 | KIKX-FM | Monte Vista, CO | 3.0 AP |
| 104.5 | KAFA | Colorado Springs, CO | AP/VA* |
| 105.5 | KHUI | Security, CO | 2.1 CW& |
| 106.3 | KKLI | Windsor, CO | 6.3 SA |

[27 stations 18 AM 17 FM]

Denver, CO
metro 1,537,800 TSA 2,485,400
M.S. rank 24 ARB rank 24 #4
Winter Arbitron

| | | | |
|-----|------|------------|---------|
| 560 | KLZ | Denver, CO | 6 KC/SO |
| 630 | KHRO | Denver, CO | 5 AC |

FREQUENCY

99.7 MHz

| | | |
|---------|-------------------|----------------|
| WQOF-FM | Dothan, AL | 100000w 984ft |
| KMBQ | Walla Walla, AK | 51000w 157h |
| KWVY | Mono Bay, CA | 450w 981h |
| KIOO | Ponterville, CA | 24000w 690ft |
| KFRC-FM | San Francisco, CA | 99500w 1298ft |
| KWXA | Durango, CO | 16000w 879ft |
| WVDO | Vero Beach, FL | 50000w 298ft |
| WNNX | Atlanta, GA | 100000w 1052ft |
| WKAJ | Hillsboro, IL | 50000w 492ft |
| WSTW | Frankfort, IN | 50000w 460ft |
| KPMI | Macon, LA | 100000w 1050ft |
| WDIX-FM | Louisville, KY | 24000w 715ft |

USA

Orlando

| | | |
|------|-------------|---|
| WDBO | 5000/5000w | DA-N [NX-TK] 6e |
| 590 | | +New City Communications 407-295-3454 4192 John Young Parkway, 32804 [WVKA and LMA stations WCFB] Orlando Arbitron 7.9 2nd market Daytona Beach |
| WWVZ | 5000/1000w | DA-N [NX/SX] 7e 1e 8c 3c 0p |
| 780 | | +Paxon Broadcasting 407-960-0664 2500 Maidland Cir. Pkwy. #407, Maidland 32751 [WVRR and also owns WWVZ, WMOF] op 50000/50000 DA-2 Orlando Arbitron 1.2 |
| WOMX | 5000/5000w | DA-N [AC] 9c |
| 850 | | +Nationwide Communications 407-629-5105 180 Lee Rd., Ste. #270, Winter Park 32790 [WOMX-FM] Orlando Arbitron 2 |
| WHOO | 50000/5000w | DA-2 [BG/ET/AR] 7e 5c 7c 9c 1i |
| 990 | | +TK Communications, Inc. 407-295-3990 1 Radio Rd., 32808 [WHITQ] Orlando Arbitron 5 |
| WRMQ | 4100w | ND-D [SS] 1c 5i |
| 1140 | | +Florida Broadcasters 407-830-0800 1033 Semoran Blvd., Ste. 353, Casselberry 32707 [WONO] Orlando market |
| WGAC | 19w | [RL*] |
| 89.3 | | Oak Ridge High School 407-855-2911 6000 Wingard Rd., 32809 Orlando market |

CANADA

British Columbia

Abbotsford

| | | |
|-------|--------------|---|
| CFVR | 10000/10000w | DA-2 [AC-OL] |
| 890 | | +Fraser Valley Broadcasting Ltd. 604-859-5277 2722 Allwood St., Matsqui V2T 3K6 [CFSR] Vancouver market |
| CFSR | 50000w 475h | [E2] 6e |
| 184.9 | | +Fraser Valley Broadcasting Ltd. 604-859-5277 2722 Allwood St., Matsqui V2T 3K6 [CFVR] Vancouver market |

Ashcroft

| | | |
|------|------------|------------------------------------|
| CHNL | 1000/1000w | ND [AC r:CHNL-610] |
| 1340 | | +NL Broadcasting Ltd. 604-372-2292 |

Barriere

| | | |
|-------|------------|----------------------------------|
| CBYO | 1800w 850h | [VA*] r:CBTK-88.9] |
| 104.1 | | +CBC English 604-861-3781 |
| CFBM | 180w 872h | [AC r:CFBM-98.3] |
| 105.9 | | +Fin Pattison Group 604-372-3222 |

Burns Lake

| | | |
|------|-----------|--|
| CFLD | 1000/500w | ND [AC] 6f |
| 740 | | +Cariboo Central Interior Radio 604-692-3414 Box 600, V0J 1E0 |

M STREET
CORPORATION
(212) 473-4668

TV News

Doug Smith
14 Brookside Court
Nashville, TN 37209
615-356-8305
CIS 72777.3143



Abbreviations used in this column:

- ERP= Effective Radiated Power in kW
- HAAT= Height Above Avg. Terrain
- nc= no change
- TL= Tower Location
- CP= Construction Permit
- Pr= Province (of Canada)
- *= Non-commercial
- CRTC=Canadian Radio-Television Commission
- DBS= Direct Broadcast Sat.
- SS:= Spanish language

APPLICATIONS FOR NEW STATIONS

St Ch ERP HAAT City; Applicant
OR 32 5000 544 Salem; EMI Bestg.

APPLICATIONS TO CHANGE EXISTING STATIONS

St Ch ERP HAAT Call City
FL 45 2541 308 WHFT Miami
(was 2400kW)
IL 16 600 nc WTJR Quincy
(was 178kW)
NJ 63 2188 nc WMBC Newton
(was 1510kW)
NY 26 659 180 WTJA Jamestown
(was 661kW/182m)
VA 27 2690 607 WFXR Roanoke
(TL:Bent Mtn., Roanoke)
(was 1230kW/610m)

NEW STATION ON THE AIR

(tentative)
Tice, FL: WRXY-49Z
5000kW/312m
TL 26°47'08"N, 81°47'41"W
in the Tuckers Corners tower farm with the other Ft. Myers-area stations.
Tentatively logged by John Combs in mid-January.

OTHER STUFF

California - Oregon Broadcasting Inc., owners of KOB1-5, KOTI-2, and a bunch of other ABC affiliates in northern California and southern Oregon, have purchased the CP for KEVU-34 Eugene. Normally I'd expect this to mean KEVU would soon be coming on the air as an ABC affiliate (as happened when COBI purchased KFWU-8 Ft. Bragg and KAEF-23 Arcata) but Eugene already has an ABC affiliate, KEZI-9.

A panel appointed by new New York Mayor Rudolph Giuliani has suggested that the city sell its radio and TV stations, WNYC-830/WNYC-FM 93.9/WNYC-TV 31. All three stations operate on channels not reserved for non-commercial operation; thus, all three could be sold to commercial owners. (indeed, WNYC-TV already sells some airtime for ethnic programming) Currently, roughly 30% of the stations' \$13.5million budget is provided by the city, with the rest coming from private fundraising and the above-mentioned sale of airtime.

The group suggested the city could make \$45million by selling the stations. Media brokers suggest the actual proceeds could be considerably higher, with the radio stations worth \$25-30million and the TV \$35-40million. A previous panel, convened in the 1980's, had suggested against selling the stations. Any move by the city to sell will probably face stiff opposition.

The L.A. earthquake caused little or no permanent damage to that city's TV stations, except to the bottom line. Power failures took all VHF stations off the air, but KNBC-4 returned, with a backup generator, 2 minutes later, and the other stations followed quickly. However, with stations averaging 30 hours of uninterrupted (i.e. commercial-free) quake coverage, an estimated \$3million in revenue

The 1994 M Street Radio Directory is the radio industry's most complete, accurate, and affordable reference book. Now with LMA's & duopolies. Easy to carry, easy to use, with over 25,000 updates in this 736-page, 6" by 9" softbound edition. Same day shipping by Priority Mail.

\$32.95 + \$4.00 S & H each

**M STREET, 304 Park Ave S Floor 7,
New York NY 10010**

(Other Stuff, contd.)

was lost. Cable systems are also losing revenue while none suffered severe damage, former subscribers without electricity (or homes!) won't be subscribing for awhile.

Retransmission-consent negotiations are over. (at least for the time being) Now, it's time for stations denied must-carry to petition the FCC for reversal of cable-operator decisions. In Lima, Ohio, WLIO-35 wasn't actually dropped from any cable systems, but petitioned the FCC to declare WLIO's ADI (Area of Dominant Influence) to include several nearby counties, thus guaranteeing must-carry protection in those counties. Several other over-the-air stations in the area (presumably Toledo stations) opposed the move.

And in central Missouri, KMOS-6 was denied must-carry on 40 systems. The PBS station petitioned the Commission for protection; and every one of the 20 complaints judged so far has been decided in KMOS' favor.

The Connecticut Dept. of Public Utility Control has approved a second cable system to serve Hartford and adjoining communities. A TCI system already serves the area. The new system, FiberVision, was given 12 years to complete construction. (an urban cable system is a big construction project!) The firm plans to start with 53 channels of programming. Connecticut is the only state in which the public utility commission regulates cable TV.

WHDH-7 Boston is dropping "CBS This Morning" in order to air more local news. Speculation is that KPIX-5 San Francisco will follow suit.

A severe ice storm on Thurs., January 10 knocked WXMT-30, WPGD-50, and three LPTVs (also a bunch of FMs) off the air. It also left 75,000 locals without power at least

briefly, and over 20,000 are still without electricity as I write this, on Monday. As a result, arrangements were made to carry WSMV-4 news on WLAC-FM 105.9 on Friday, and on WAMB-1160/106.7 over the weekend. WTVF-5 newscasts are already regularly carried on WKDA-1240.

(luckily, my power was only affected for about 2 minutes. Unfortunately, those two minutes were today, as I was writing, and unlike a good computer user, I hadn't saved the file...)

LPTV WATCH

| Call | St | City; programming |
|-------|----|--|
| W07BZ | FL | Orlando; Telemundo |
| K07TV | MO | St. Louis; OFF |
| W11BM | FL | Orlando; The Box |
| W12CD | FL | Altamonte Sprs.; relays W07BZ from the WESH-2 tower in Orange City. |
| W21AU | FL | Orlando; local |
| W27BB | FL | Kissimmee; Tourist |
| W31AU | FL | Orlando; WACK-55 |
| W40AG | FL | Kissimmee; indep. SS: |
| W40AY | MI | Traverse C.; WGKI-33 |
| W53AV | IN | Indianapolis; "WAV" |
| K56CA | MO | St. Louis; OFF |
| W63BH | FL | Orlando; Univision (also relays WCPX-6 6pm news in SS:) |

This month from John Combs and Eric Bueneman.

FORUM

Tom Bryant, Nashville TN:

Tom brought back some local newspapers from a visit to the Caribbean. First, from French-controlled Martinique. (where 36 new private FM stations have been licensed, details to Greg C.) Four TV stations are listed here. Two of them, France 2 and TFL, appear to be based in mainland France, broadcasting noon-11:10pm and 9am-1am respectively. RFO is a France-based service to overseas territories, and one program listed appears to be produced on Martinique. This channel broad

(Forum, Tom Bryant, contd.)

casts from 8:33am-11:51pm. Finally, there's Antilles Television. This seems to be a mix of locally-produced shows and the France-based M6 network. It operates from 5pm-1am, and carries a half-hour of CNN Headline News at 10pm! Channels aren't given for these stations; in any case, they use the French color and frequency standards (high-band VHF & possibly UHF) and cannot be easily received on U.S. TVs. Some may also be available only via satellite or cable.

In the *Barbados Advocate*, only one TV station, CBC TV, is listed. Programming is a combination of U.S. sitcoms & soaps, locally-produced programs, and a number of things I don't recognize. (and are probably British) The station is listed as being on channel 8, not channel 3 as the *World Radio-TV Handbook* indicates.

Finally to Trinidad. There are three stations here. TTT operates from 6am-11:45pm on channel 2; there's also a relay on channel 13. Programs include several hours of CNN between 6am and 3:30pm, plus some CBS and NBC soaps, and a few other U.S. programs.

CCN-TV is on channel 6, from 5am-11:20pm. The station carries local news, the 700 Club, and quite a few CBS programs. This station also appears on Channel America affiliate lists.

Finally, there's AVM-TV. They operate 6am-about 10pm on channel 4. Programming is generally similar to CCN-6, except the U.S. networks programs are ABC. The All News Channel is carried from 10:45am-noon and 2-5pm.

Dave Sinclair, Vancouver BC:

Sticking to the "overseas" theme for a minute, Dave sends some Canadian news. First, from Quebec, a new coalition of businesses & cable firms is planning

a province-wide interactive communications system.

According to the Jan. 25 *Globe & Mail*, "UBI" will begin construction in the Saguenay region (Jonquiere/Chicoutimi) and expects to eventually reach 80% of the homes in Quebec. The system is owned by cable firms Videotron, Videoway, and Hearst (the latter a U.S. firm); by electric utility Hydro-Quebec; by the Quebec lottery; the National Bank of Canada; and Canada Post Corp..

UBI services will be delivered over Videotron's cable TV lines, but it will not be necessary to subscribe to cable to use the service; UBI services will be free to the consumer, and paid for by fees charged to businesses that use the system. Consumers choosing to use the system will be issued, without charge, a "smart card" & reader, a "converter wand", and a "transaction printer."

The first plans are for UBI to be used for ordering goods from an "electronic catalog". Hearst also expects to test the system as a way of delivering business directories, custom newspapers, and similar products. More than 75 firms beyond those providing financial backing have expressed interest in joining the system.

Videotron expects to eventually expand UBI to Canada-wide service by franchising to other cable firms.

Also on Jan. 25, in the *Financial Post*, (and also reported in other sources) an outer-space disaster has befallen Telesat Canada. A Jan. 22 solar storm knocked their Anik E1 and E2 satellites out of position. Technicians were able to return E1 to its rightful position, but E2 may be permanently lost.

The failure affected 45

(Forum, Dave Sinclair, contd.)

TV signals, including the national broadcast network CTV, as well as a number of telephone & data signals. Signals normally carried by the Anik were moved to new U.S. satellite Galaxy 6 and to Anik E1.

Applicants for 48 new cable-TV services are especially concerned; their services would have been carried by E1 and E2. Telesat hopes digital compression technology, which would relax the pressure on transponder space, will be ready by the time the new services are licenced.

While the space shuttle has had success in repairing satellites in low orbits, geosynchronous satellites are beyond the range of the shuttle.

Finally, from the Jan. 12 *Vancouver Courier*, the Canadian version of *TV Guide* wants to go electronic. Publisher Graham Morris wants the CRTC to authorize a cable service which will have a live host reviewing programs on other channels.

John Combs, Orlando FL:

The "Cover Story" in the Jan. 17-23 edition of *Central Florida Business*: "Sending A Low-Power Signal". The half-page article details Orlando's eight LPTVs.

While advertising rates on these stations are much lower than on full-power operations (roughly \$40 on LPTV vs. roughly \$2,800 on a VHF affiliate, for 30 seconds of primetime), the cost of an LPTV is considerably lower as well. Rev. Nathan Price, owner of W31AU, told the paper it cost him \$350,000 to build the station, compared to \$5-8million for a new full-power station. "If your signal is right, you can cover 60-65% of the population." The cost of a full-power station is much higher if you have to buy an existing one- WESH-2 sold last year for \$143million.

TV stations have to appear

in some minimum number of ratings diaries to get rated. (otherwise, the sample could be too small to be statistically meaningful) LPTVs almost never reach this minimum, and the Orlando stations are no exception.

This, of course, makes estimating viewership very difficult! Bill Rowell of W21AU said he bases his estimates on how many people call the station when the phone number is broadcast. Officials of W27BB, whose broadcasts are directed at tourists, base their estimates on hotel-room occupancy. Lilly Menendez, general manager of W63BH, says "If anyone comes up with a figure, I don't believe it to be accurate." Probably the one person who really counts- Tim Chinchor, whose electrical business advertises on W21AU- says he has no idea how many people see his ads, but many customers mention them.

LPTV was originally meant as a source of local programming to small communities & ethnic enclaves. As in the rest of the country, this hasn't happened in Orlando- only W21AU, W27BB, and W40AG produce programs- and W27BB's target audience is tourists.

Two of Orlando's LPTVs, and WFXL-31 Albany, Ga., belong to Timothy Brumlik of Altamonte Springs. Brumlik recently finished a 30-month federal prison term for money laundering. The FCC began proceedings to revoke the licenses of the stations, but settled for an agreement to allow Brumlik to sell them, provided all proceeds went to creditors in his personal bankruptcy case. An additional condition was that Brumlik not be involved in the operation of the stations- but this condition doesn't apply to his wife, Patricia, who operates the two LPTVs.

(Forum, John Combs, contd.)

Because of the federal charges, operating licenses for the two LPTVs, normally granted 3-6 months after a station goes on the air, have not yet been issued. The stations continue to operate as construction permits.

Writing later, electronically, John says "I think WRXY-49 in Tice FL is on. The other morning conditions were up to SW Florida, and I had a 49 in running FamilyNet that seemed to peak and fade with the other Ft. Myers/Naples area U's. No legal ID seen in the 2+ hours I monitored..." John is trying to verify this with Carlon Howington.

Keith Smith, St. Ann MO:

Keith notes that 8 large-market TV stations are now airing news at 4 or 4:30pm. He asks, "Who watches news that early in the evening?" Probably second-shift workers, people with four-day workweeks, and those who work at home. Certainly there are enough such people that 5pm newscasts do very well in many cities, including Nashville.

TBN has been seeing airing reruns of the 700 Club and their "Real Videos" music-video program.

Finally, KOMU-8 Columbia has dropped NBC's "Nightside".

Eric Bueneman, Hazelwood MO:

Another correspondent from Missouri.. Eric has some info on dark LPTVs in the St. Louis area. "...K52AY has been dark since lightning struck their transmitter in mid-1988."

Eric says he hasn't seen K07TV since 1990. Nor has he seen K56CA since early 1989; all he could see from a 8th floor hotel room in St. Louis was WRSP-55.

DARK STATIONS?

Does anyone out there know if any stations on this list are, in fact, operating? Or if any U.S. stations between channels 21 and 33 and not on this list are off? Thanks!

KWHM-21 Wailuku, Hawaii
KRBR-21 Duluth, Minnesota
WNHT-21 Concord, New Hampshire
WFIL-21 Florence, S. Carolina
KWKU-22 Ft. Collins, Colorado
WEYS-22 Key West, Florida
KFSC-22 Waterloo, Iowa
WNJX-22 Mayaguez, Puerto Rico
KSKN-22 Spokane, Washington
KAFF-23 Arcata, California
WELF-23 Dalton, Georgia
WWQR-23 Morgantown, N. Carolina
WSUN-24 San Juan, Puerto Rico
WPAJ-24 Danville, Virginia
KBCB-24 Bellingham, Washington
KPMP-24 Pullman, Washington
WYDP-25 Orange Park, Florida
KZJG-25 Longmont, Colorado
KRZB-26 Hot Springs, Arkansas
KCDT-26 Coeur d'Alene, Idaho
KMVU-26 Medford, Oregon
WQTO-26 Ponce, Puerto Rico
WZWY-27 Orlando, Florida
KLWY-27 Cheyenne, Wyoming
WFDG-28 New Bedford, Mass.
WQHM-28 McComb, Mississippi
KYLE-28 Bryan, Texas
KBVU-29 Eureka, California
WKRP-29 Charleston, W. Virginia
WUXA-30 Portsmouth, Ohio
WRWR-30 San Juan, Puerto Rico
KOOG-30 Ogden, Utah
KVMD-31 29 Palms, California
KBFD-32 Honolulu, Hawaii
WELU-32 Aguadilla, Puerto Rico
WXGZ-32 Appleton, Wisconsin
KWCV-33 Wichita, Kansas
KBGE-33 Bellvue, Washington

I suspect most of these are unbuilt CPs, though some are known to have operated.

DX ETC.

Wow! Actually had some tropes this morning. First in months. FM's been better, but only because storms keep knocking the locals off. Hope none of our members have been too seriously affected.

73 Doug

Paramount/WB Networks Affiliate List

(Feb. 1, 1994)

Paramount Network affiliates:

WWOR-9 New York
 KCOP-13 Los Angeles
 WPWR-50 Chicago
 WTXF-29 Philadelphia
 KBHK-44 San Francisco
 WDCA-20 Washington
 KTXA-21 Dallas
 KTXH-20 Houston
 WUAB-43 Lorain/Cleveland
 KMSP-9 Minneapolis
 KSCH-58t Stockton/Sacramento
 WZLZ-39 Miami
 KUTP-45 Phoenix
 KTVD-20 Denver
 WTTV-4 Indianapolis
 KPTV-12 Portland
 WJZY-46 Belmont/Charlotte
 WYMT-30 Nashville
 WLMT-30 Memphis
 KJZZ-14 Salt Lake City
 KABB-29 San Antonio
 KOCB-34 Oklahoma City
 KTFO-41 Tulsa
 KASN-38 Little Rock
 WJTC-44 Pensacola/Mobile
 KAIL-53 Fresno

The 't' following KSCH-58 indicates no agreement has been finalized.

Attached is a list of all TV stations which have announced affiliation with either the Paramount or Warner Brothers TV Networks. Note that the WB Network claims WGN-9 Chicago as an affiliate; this station will reach, by cable, into markets not reached by over-the-air WB affiliates. A number of cities have one or more true (non-Fox) independent stations & no WB or Paramount affiliate. In top-50 markets, these are: (not listing religious or HSN stations, or those without adequate signal to cover the market)

| | |
|--|---|
| Boston (WHRC-46, WMFP-62, WABU-68, WBSK-38) | Orlando (WAYK-56/WAYQ-26, WBSF-43, WKCF-68) |
| Detroit (WADL-38, WXON-20, WGPR-62, WBSX-31) | Portland (KBSP-22) |
| Cleveland (WBNX-55) | Milwaukee (WTVV-18, WDJT-58, WJJA-49) |
| Atlanta (WTLK-14, WNGM-34, WVEU-69) | Kansas C. (KMCI-38, KZKC-62) |
| Tampa (WTMV-32, WTOG-44) | Cincinnati (WSTR-64) |
| Seattle (KBGE-33, KTZZ-22) | Nashville (WJFB-66) |
| Miami (WBFS-33) | Raleigh (WKFT-40) |
| Pittsburgh (WPTT-22) | Columbus (WWAT-53) |
| Baltimore (WNUV-54) | New Orleans (WCCL-49) |
| Hartford (WHCT-18, WTYX-20) | Okla. City (KOKH-25, KSBI-52) |
| San Diego (KTTY-69, KUSI-51) | Salt Lake (KOOG-30) |
| | Norfolk (WGNT-27) |
| | Little Rock (KRZB-26) |

WB Network Affiliates:

WPIX-11 New York
 KTLA-5 Los Angeles
 WGN-9 Chicago
 WPHL-17 Philadelphia
 KOFY-20 San Francisco
 WLVI-56 Cambridge/Boston
 KTVT-11 Dallas
 KHTV-39 Houston
 WGNX-46 Atlanta
 KLGT-23 Minneapolis
 KSTW-11 Tacoma/Seattle
 KPLR-11 St. Louis
 KRBK-31 Sacramento
 KWGN-2 Denver
 WKCF-18 Clermont/Orlando
 WMCC-23 Marion/Indianapolis
 WGN0-26 New Orleans
 KMGC-43? Fresno (Clovis?)

I have no list of a KMGC in Fresno. Suspect this is actually KGMC-43.

While not shown on any lists, the WTTV-4 affiliation to Paramount probably includes WTTK-29 Kokomo.

FM NEWS

Greg Coniglio
 5100 Glenwood Drive
 Williamsville, New York 14221
 e-mail: coniglio@acsu.buffalo.edu
 e-mail: v131kkdn@ubvms.bitnet

Many of the changes and updates listed are selected information courtesy:

M Street Journal - 304 Park Ave. So. 7th Floor - New York, NY 10010

PHONE (212) 473-4668, FAX (212) 473-4626

ALABAMA:

Citronelle: WKQR 101.9 changes calls to WHXT. Also they are requesting their 3rd extension on their CP for 102.1 with 15,400 watts, and 426 ft.
 Dadeville: WZLM 97.3 slogan "Z97", ID with Alexander City and Tallassee=
 Demopolis: is still on 106.5, has requested an extension of time on its CP for 106.5, 50 kW @ 492 ft.
 East Brewton: "new" 95.7 gets the calls WAFN.
 Florence: WXFL 96.1 is still hot AC but adds at times the new "Major" hot/AC service
 Florence: W285AE 99.5" is granted, 80 w. translator for WAYM 88.7 Columbia, Tenn.
 Guntersville: "new" station granted for 88.5, with a power of 2,200 watts @ 417 ft.
 Jasper: 102.5 WZBQ goes oldies "Cool"
 Killen: W209AD 89.7" is granted, 10 w. translator for WAYM 88.7 Columbia, Tenn.
 Northport: WLXY 100.7, CP to increase power to 11.5 kW @ 400 ft., new xmtr location, now a C3 station.
 Rogersville: WFIX 93.9 signs on the air with oldies parallel to WINJ 98.3 Pulaski, Tenn.
 Talladega: new slogan for WEYY 92.7: "Y92"
 Union Springs: WSFU 94.1 heard running black gospel, mono=
ALASKA:
 Anchorage: KWQJ 92.9 not on: requests extension of time
 Kodiak: KJJZ 101.1 runs 228 watts at night.
 McCarthy: new 89.7" accepted for filing.

ARIZONA:

Bagdad: proposed 103.1 class C3
 Bisbee: New 90.9" accepted for filing.
 Glendale/Phoenix: KKFR 92.3 moved from urban CHR into a more straight CHR approach, "Power 92".
 Holbrook: KZUA 92.1 signs on with Unistar country
 Oro Valley/Tucson: KRKN 97.5 changes from classic rock "to Jones Satellite Network "CD country"
 Williams: KVTF 96.7 not on: requests extension of time

ARKANSAS:

Camden: "new" grant for 104.5, 3 kW @ 328 ft.
 Clinton: KHPQ 92.1 is satellite country with a slogan of "Q92"
 Danville: "new" 105.5 granted KDYC
 Dumas: KXFE 107.1 still there, no move to 106.9 yet. Slogan "Foxy Country" and was country, maybe satellite=
 Fairfield Bay: KFFB moved from 106.3 to 106.1, standards=
 Hardy: KOOU 104.7 new to the air with oldies, "Cool 104.7"
 Little Rock: KYFX 99.5 is now SMN - Urban A/C.
 Little Rock: KKYK 103.7 now uses "The New 103.7 K-Rock"
 Marked Tree: KXHW 93.7 is on with classic country=
 Marshall: KBCN 104.3 "Star Radio", mentioned several relays "95.3 Fort Smith" (KERX Paris?), "95.9 central Missouri" (?) and also "93.5 Branson, Missouri" (translator?)=
 Mountain Home: KWOZ 103.3 new slogan: "Arkansas 103.3"
 Mountain Home: KKTZ 107.5 uses slogan: "Mix 107.5"
 North Crossett: KWLT 102.7 not on, they have been granted their 7th extension of time.
 Osceola: "new" 107.3 granted KAFW
 Paragould: KDXY 104.9 is now oldies, and "K-105"
 Paris: KERX 95.3 changes from rock to satellite country.
 Pine Bluff: KZYP 99.3 was ID ing only parallel to KCLA, which

Arkansas cont:

is AM 1400 in Pine Bluff, no mention of the FM=
 Pocahontas: KPOC 103.9 was heard with mono gospel=
 Sparta: KLTQ 96.5 is on with AC for Springfield, "Q 96.5"
 Trumann: KWEZ 106.7 is country, slogan is "Kickin 107"
 Warren: KWRF 105.5 was heard in mono=
CALIFORNIA:
 Arnold: "new" 95.9 assigned KAGV
 Atherton: KCEA 89.1 on with 100 watts at 5 feet
 Avalon/Los Angeles: KRCL 92.7 on with adult standards
 Carmel: KVOQ 95.5 is on the air with 1,650 watts @ 640 ft., format is classical music.
 Chester: KCFM 105.3 not on, requests 7th extension
 Columbia: "new" 98.9 gets KAGF
 Elk Grove: K258AC 99.5" granted, 38 watt translator for KCJH 90.1 in Stockton.
 Fresno: "new" 99.3 Fresno gets KAGZ
 Greenfield/Monterey: 99.5 returns from KQKE to KSUR-FM with a classical music format.
 Lindsay: KZPO 105.3 not on: requests extension of time
 Lompoc: "new" 104.9 granted: 700 watts @ 679 ft.
 Ludlow: KDUQ 105.7 not on: requests 2nd extension of time
 Ontario: KRZE 93.5 changes calls to KREA
 Pacific Grove: KOCN 104.9 not on: requests 2nd extension
 Palm Springs: KPLM 106.1 goes country "Palm Country"
 Redding: KFPR 88.9 on the air with classical and jazz // KCHO 91.7 Chico, CA.
 St. Helena: KVVN 99.3 remains a/c but adds some
 San Joaquin: KVPC 105.5 not on: requests 6th extension Jones a/c off the bird.
 San Luis Obispo: KSLY 96.1 moves from hot AC to CHR.
 San Rafael: KTID 100.7 will switch to classical music
 Santa Ynez: "new" 105.9 gets KAGA.
 Seaside/Monterrey: KMBY 107.1 changes to alternative rock
 South Oroville/Chico: KYIX 104.9 on the air with religion
 Sutter Creek: KMAT 107.5 not on: requests extension
 Tahoe Creek/Reno: KRZQ 96.5 is new rock, but also adds Major's New Rock satellite service.
 Thousand Palms: "new" 94.7 is expected on shortly with the calls KLOB, and a Spanish format.

COLORADO:

Basalt: KVVY 106.1 not on: requests extension of time.
 Boulder: KHHH 94.7 changes calls to KRKS-FM
 Brush: KSIH 107.1 not on: requests 2nd extension
 Evergreen: "new" 96.5 granted, 93 kW @ 1164 feet.
 Fort Collins: KCSU 90.5 will move to 89.7 and increase power to 4 kW horizontal, 40 kW vertical @ 544 ft. with a directional antenna, and also is changing transmitter location.
 Vail: KAEU 90.1 changes calls to KPRE.
 Yuma: KJCO 100.9 is reported to be silent.

CONNECTICUT:

Guilford: WGRS 91.5 is on with classical // 88.1 WMNR in Monroe, Ct.

DELAWARE:

Fenwick Island: WADD 92.1 changes calls to WLBW.

DISTRICT OF COLUMBIA:

Washington: WGAY 99.5 changes to 21,800 watts @ 751 ft.

North Carolina:

Leland: "new" 94.1 granted with 3 kW @ 328 ft.
 Oxford: "new" 91.1 assigned the calls WAFP
 Raleigh: 96.1 becomes WKIX, "Kicks" with hot country.
 Shallotte: WDZD 93.5 changes calls to WLTT
 Tarboro: see Durham, NC (107.1)
 Wilmington: WJOY 104.5 not on: requests 2nd extension
 Wilmington: WKQK 90.5 not on: requests extension of time
 Winston-Salem: WSNL 90.5 increases 10 10 kw/194', DA

OHIO:

Akron: WKDD 96.5 changes to adult contemporary
 Bainbridge: WKHR 88.3 is now 1,000 w. @ 282 ft. with DA
 Cleveland Heights: 92.3 has requested the calls WZJM
 Delhi Hills: WAEH 90.1 changes calls to WJYC
 Lancaster: WHOK 95.5 changes to 21 kW, 761 ft. modify DA
 McConnelsville: WJAW 100.9 adds Jones soft - AC
 New Philadelphia: WNPQ 95.9 changes Jones satellite
 services: from soft AC to its AC service.
 Portsmouth: WNXT 99.3 granted change to 2,550 w. @ 512'
 and also a new transmitter location
 Sandusky: WVMS 89.5 Sandusky is on the air
 Streetsboro: WSTB 91.5 changes to 300 watts @ 125 ft.
 Wauseon: WZJU 96.9's permit has been cancelled, calls
 have been returned to the FCC

OKLAHOMA:

Altus: KRKZ 93.5 changes to classic rock
 Comanche (Lawton): KDDQ 96.7 changes to country
 Elk City: "new" 94.3 granted the calls KAGK
 Frederick: KYBE 95.9 changes SMN services: ac to oldies
 Lone Grove: WYBZ 106.7 adds Jones satellite AC.

OREGON:

Collage Grove: KCGR 100.5 is to come on the air soon
 with a hot A/C format.
 Klamath Falls: KSKF 90.9 granted increase to 6.5 kW
 horizontal power and 2,000 watts vertical
 LaGrande: KWRL 100.1 is granted a change to 99.1
 (class C1) increase to 91,400 watts @ 439 ft. new xmtr
 LaGrande: KUBQ 98.7 slogan heard: "The Q"
 Milton-Freewater: KLYY 97.9 with AC, slogan "Lucky 98"
 Portland: KPQD 93.7 gave a translator list at the top of the
 hour and mentioned all of the ones in FM Atlas 14, and
 none that were not listed in there
 Portland?: A religious 96.3 heard in the Portland area, with
 medium translator power. Did not figure out who they
 translate?

PENNSYLVANIA:

Greencastle: WKSL 94.3 granted increase to 3,500 watts @
 a 430 foot height
 Hazleton: WWSH 97.9 changes calls to WZMT
 Hollidaysburg: WHPA 104.9 granted increase to 310 watts
 Lewiston: WMRF 95.9 increases to 3,900 watts, DA
 Lewiston: to get a 90.3 translator for WGRC 91.3=
 Media/Philadelphia: WPLY 100.3 "Y100" is straight CHR,
 also: their CP for 9,200 w. @ 1,145 ft and DA is cancelled.
 Northumberland: "new" 107.3 is granted WAFH
 Salladsburg/Williamsport: 95.5 becomes WFRY, country
 Scranton: WEZX 106.9 granted modification of CP: change to
 800 watts @ 895 ft. and change xmtr location.
 Sharon: WYFM 102.9 increases to 44,000 watts
 Spangler/Johnstown: WCCZ 97.3 reported to be silent
 St.Mary's: WKYN 97.5 moves in a classic rock direction
 Tioga/Elmira: WPHD 94.7 is nw SMN -classic rock, in LMA
 with WCBA AM-FM Corning (and I would assume not
 parallel to WKGB 92.5 Susquehanna anymore)

SOUTH CAROLINA:

Andrews: WGTM-FM to move to 100.7 and 6,000 watts
 Bluffton: WLOW 106.9 to go news/talk // WHHR 1130, mono
 Deltos: "new" 88.5 gets the calls WAFZ

Georgetown: WBPR 97.7 changes calls to WVXM
 Greenwood: WSCZ 96.7 adds ABC - Moby
 Loris/Myrtle Beach: WVGO 94.9 comes on the air. They are
 country music // WYAK 103.1 Surfside Beach, SC
 Pamplico: WMXT 102.1 increases to 7,100 watts @ 433 ft.
 Port Royal: WNCK 99.7 goes to an adult standards format
 (the former 106.9 format: see Bluffton)

SOUTH DAKOTA:

Brookings: KSDJ 90.7 is on the air
 Rapid City: KOUT 98.7 is on the air "Cat Country 98.7"
 Volga: KKQQ still on 102.3, is rock "Power 102"
 Winner: KWYR 93.7 mentioned their 100.1 Pierre translator
 as being on the air=

TENNESSEE:

Alamo: WNBE 93.1 changes calls to WVGW
 Benton: WBIN 93.1 not on: requests extension of time
 Bolivar: WMOD 96.7 uses the slogan "96.7 FM W-Mod"
 Brownsville: WTBG 95.3 uses the slogan "Brownsville
 Radio"
 Dresden: WGNN 95.1 requests the calls WCDZ
 Elizabethtown: WUSJ 99.3 will change to 3,850 watts at a
 height of 794 feet and new transmitter location
 Gallatin/Nashville: WGFX 104.5 is still classic rock tho a bit
 softer rock/AC format "Arrow" slogan licensed from CBS,
 but no call change as of this printing
 Humboldt/Jackson: WLSZ 105.3 changes to Jones AC
 Huntington: WVHR 100.9 non ID: "101 FM", still country=
 Jackson: "new" 88.1 allocation for filing (Amer. Family Assoc.)
 Lafayette: "new" 102.1 granted for 2,500 watts @ 325 ft. This
 was previously to be for 104.1
 Lawrenceburg: WLLX 97.5: look for the slogan "WLX"
 Lawrenceburg: WDXE 95.9 is satellite AC/oldies
 "Star Station"
 Lexington: "new" 88.7 accepted for filing
 Lexington: WZLT 99.3 changes to Jones satellite countr
 Loretto: W201AS "88.1 granted, 55 w. xlr of WAYM 88.7
 Loudon: WNOX 99.1 increases to 6 KW @ 328 ft.
 Martin: WCMT 101.7 is "Best Mix 101.7 FM", no longer
 oldies maybe?=
 Oliver Springs/Knoxville: WXVO 98.7 adds Major country
 Ripley: WTRB 94.9 is satellite AC "Bright 95"
 Savannah: WKWX 93.5 is now country=
 Selmer: WSIB 93.9: this is likely the unID reported with this
 slogan in W. Tenn. "93.9 Cruisin' on J-Rock & Roll" oldies?=
 Soddy Daisy: WFXS 102.3 granted increase to 6 kW, also
 adds Major satellite rock service.
 Trenton: WWEZ 97.5 slogan: "The Mid-South's Lite FM
 EZ 97.5"

Union City: WLJJ 105.7 (CP) new xmtr loc: 36-31-28 89-07-
 13

TEXAS:

Amarillo: KAEZ 105.7 to change to 11 kW (C3) @ 216 feet
 Bandera: KEEP 98.3 comes on after a silence with MGS
 Contemporary Christian
 Beeville: KIBL 104.9 requests an extension of time to move to
 105.7 Mhz and increase to 25,000 watts @ 328 ft.
 Canyon/Amarillo: KAKS 107.9 adds Major hot AC service
 Clarksville: KCBZ 98.5 changes calls to KGAP
 Copperas Cove: KOOV 103.1 changes to 6,300 w. @ 66 ft.
 El Paso: KINT 93.9 has gone Spanish // KSVE 1150
 Franklin: KLTR 101.9 not on: requests 2nd extension of time
 Henderson: KGRI 99.9 increases to 7,100 w. @ 433 ft.
 Hillsboro: 102.5 is now KRBQ, "The Bear", classic rock
 Houston: 93.7 "Arrow" has gotten KKRW to fit that slogan
 Marshall: KMHT 103.9 changes calls to KZEY, and is urban
 Pasadena: KJIG 88.1 is in LMA with KFTG, now they are
 Christian country
 San Augustine: KCOT 99.9 is on the air

Texas:

Santa Fe: KFTG 90.5 is on the air with traditional gospel
 Seymour: KSEY 94.3 changes to FTP - talk
 Springtown: KMQX 89.1 is silent
 Wichita Falls: KQXC 105.5 not on: requests 2nd extension

UTAH:

Ephraim: "new" 89.5 gets the calls KAGJ
 Moab: "new" 96.7 granted for 1,630 watts @ 1246 feet
 Payson: KTCE 92.3 is on the air
 Saint George: KYVS 95.9 not on: requests extension of time
 Vernal: KLCY 105.9 changes to Jones satellite "CD Country"

VIRGINIA:

Buffalo Gap: WSKO 105.5 adds Jones AC
 Lynchburg: WMXQ 105.9 is on the air
 Norfolk: WNSB 91.1 is not yet to 18 kW @ 298 feet; they have
 requested a 2nd extension to change to this power
 Roanoke: WWRV 105.3 changes calls to WRDJ "DJ 105"

WASHINGTON:

Camas: KMUZ 94.7 on for Porland, EZ mx, "K-Music 94.7"
 Castle Rock: KAZL 107.1 is on the air with satellite AC=
 Clarkston: KCLK 94.1 heard with country, slogan "KC94"
 Grand Coulee: KEYG 98.5 increases to 100 kW @ 944 feet
 Mercer Island: KMIH 104.5 now 14 watts (h) @ 233 feet
 Omak: proposed amendment to add a 104.3 class C2 here
 Prosser/Richland: KZXR 101.7 adds Major hot AC
 Seattle: 95.7 becomes hot AC and KJR-FM
 Seattle: KPLZ 101.5 goes hot AC, "Star 101.5"
 Toppenish: 92.9 get the calls KXXS "New Country Kix 93"
 Vancouver: "new" 105.9 granted for 10 kW @ 1082 ft.
 Walla Walla: KNSN 97.1 goes SMN - country I heard the
 slogan: "97 Country, Kickin' Walla Walla"
 Walla Walla: KNLT 95.7 slogan: "Oldies 95.7"
 Wenatchee: "new" 89.9 for filing
 Wilson Creek: KVVY 103.3 requests replacement of their
 CP which has expired

WEST VIRGINIA:

Fairmont: WFGM 97.9 changes to 29 kW @ 640 ft.
 Morgantown: WWVU 91.7 increases to 2,600 w. @ 180 ft, DA
 Point Pleasant: WBYG 99.5 not on: requests 2nd extension
 Weston: WSSN 102.3 has increased to 25 kW @ 98 ft.
 White Sulphur Springs: WXMD 93.3 not on the air: requests
 their third extension of time

WISCONSIN:

Appleton: WAPL 105.7 increases to 100 kW @ 1174 ft.
 Ellison Bay: proposal to add a class A 92.5 here
 Mauston: WRJC 92.1 was variety, hones in on AC
 Marinette: WLST 95.1 increased height to 436 feet
 New Holstein: KFKQ 92.9 not on: requests 2nd extension
 Park Falls: WCQM 98.3 changes to SMN Real Country
 Shell Lake: WGMO 95.3 granted 2,380 w. @ 580 ft.
 Stevens Point: requests a replacement of their expired CP
 to move to Marathon WI with 25 kW @ 328 ft

WYOMING:

Gillette: KGWY 100.7 goes to alternative
 Gillette: KAML 96.9, oldies, slogan "96.9 Camel Gold"
 Lander: KDLY 97.5 slogan "Hit Radio 97" format change?=
 Laramie: KKNG 104.5 is not on, requests extension of time
 Rawlins: KIQZ 92.7 changes format to soft AC
 Riverton: KTRZ 93.1 ment'd on the air their 95.3 Lander xlr=
 Sheridan: KROE 94.9 I heard with sat. AC and just "94.9"
 Sheridan: KWYO 96.5 heard with satellite oldies.
 Wheatland: KYCN 101.7 adds some Jones satellite AC

WRHN FM 100.3
1240 AM WOBT

In the first installment of "FM News" I would like to take this opportunity to thank Robert Unmacht and the folks at M Street Journal for their permission to allow selected material from their weekly M Street Newsletter to be reprinted for the benefit of WTFDAers in the VUD. I am hopeful that they will find some format changes from reading this column or the DX columns, that can benefit their publication. Both the weekly M Street Newsletter highlighting changes in the radio industry, and the M Street Journal, a yearly publication which lists U.S. & Canadian stations by geography, frequency, and alphabetically, are quality publications with many interesting items to FM DXers. The M St. Journal has very specific information on each station: format, power and height, address, phone number, the year of the last change, and even ratings and LMA information where applicable. I would recommend it and Bruce Elving's FM Atlas as both being invaluable to FM DXers. Look for information on both M Street Publications in this or upcoming VUDs. Special thanks for items in this column this month also go out to: Matt Sittel, John Combs, Chip Kelley, Tim Noonan, Doug Smith, Eric Bueneman, Paul Mount, Phil Bytheway, and Dave Nieman.

7TH ANNUAL NASWA WINTER SWL FEST

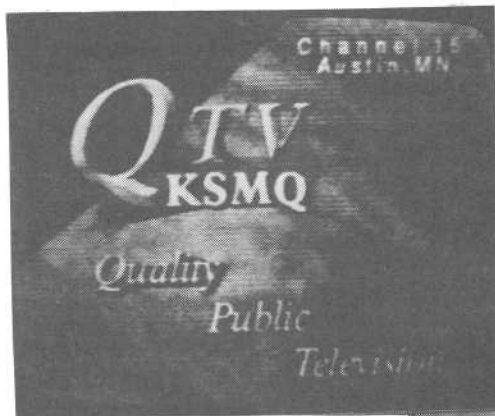
*** March 11 - 13 * Holiday Inn * Sumneytown**

Pike * Kulpville PA (Philadelphia area)

The North American Shortwave Association will once again be holding their SWL Winter Festival, fast becoming one of the largest and most successful DX gettogethers anywhere. More than 125 DXers attended last years Winterfest. This year's event includes forums on Scanners, Utility, and Mediumwave DXing. Member Dan Cashin will have info about WTFDA there, and other ANARC DX'ing clubs will be represented, too. Just about all aspects of the wide world of DX interests will likely be represented there -- what a great way to spend a winter weekend! For more info monitor the ANARC SWL NET at 7.240 MHZ LSB SHORTWAVE at 10 a.m. Sundays, or write to:

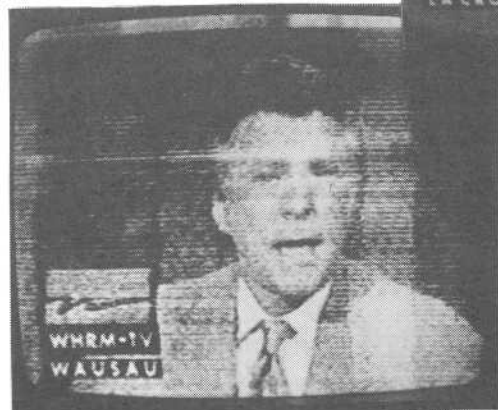
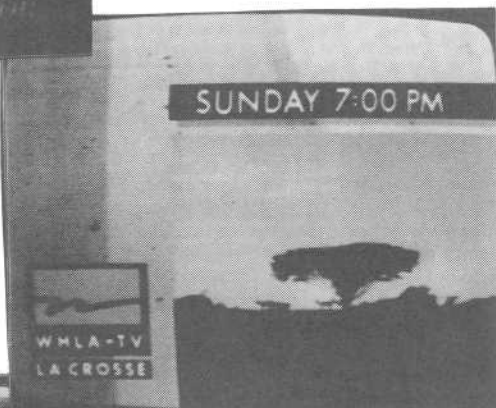
WINTER SWL FESTIVAL - PO BOX 591 - COLMAR, PA 18915

Robert Kramer-Chicago Illinois. Equipment: 1978 RCA 19" b&w set, Sony 19" color set, Mitsubishi HS-422UR stereo VCR. Archer U-120 UHF antenna up 68 feet and a V-185 VHF antenna up 58 feet, both with RG-11 feed. Three Archer 15-1113A adjustable preamps. Alliance HD-73 rotor. Camera equipment: Ricoh XRM 35mm loaded with Kodak T-Max 400 ASA b&w film.



KSMQ-15
Austin Minnesota
297 mile tropo
seen March 1, 1993
at 2100 CDT

WHLA-31
La Crosse Wisconsin
225 mile tropo
seen March 26, 1993
at 2100 CDT



W64AU
Adams Wisconsin
176 mile tropo
seen May 6, 1993
at 0613 CST
(translator of WHRM-20)

more from Robert on the next page...

...continued from last page.

KYUS-3
Miles City Montana
956 mile E-skip
seen June 3, 1993
at 1500 CST



CFQC1-3
Stranraer Saskatchewan
1215 mile E-skip
seen June 3, 1993
at 1714 CST



KOLR-10
Springfield Missouri
443 mile tropo
seen June 15, 1993
at 0215 CST



More from Robert next month.



WESTERN TV-DX

Fred McCormack
PO Box 65666
St. Paul MN 55165-0666

(612) 735-6860

Deadline: 04-07-94
Cut-off: 01-01-94

March 1994

January 1994 E skip was reported on 1,12,15,17, and 22. Not too bad!

New ___ New Mode ___ Tent. - t Unidentified - unid S/On - + S/off - =
ID Color Bars - @ Unid Color Bars - % Misc. Test Patterns - &
Parallel Programming - // MTS Stereo - \$

BN Baja California Norte

Robert Delaney, RR#4 Box 385, Mt. Vernon IL 62864 (KA9UVY) (618-242-7256) CST

Equipment:

1990 Zenith 13" color SS 1311W, Emerson 885 VCR. UHF ant: 7' parabolic CM 4251 @ 110' agl, UA 900 preamp, RG-11 coax. VHF ant: rotatable vertical dipole @ 25' agl for E skip, CM 3608 @ 55' agl. Camera: Pentax K 1000 with Kodak Gold Plus 200.

January 1994

1 Es 2102 WPBT 2 FL 990

William Draeb, 1304 Ellis St., Kewaunee WI 54216 (414-388-2350) CST

Equipment: See February 1994 Western TV-DX.

January 1994 15 Es 1953 KIII 3 TX 1285 16 ms 0558 unid channel 2
2 tr 2030 WPTD 16 OH 365 KOB t 4 NM ("2-8-11")
(Fading in/out) 2024 KMIDt 2 TX 22 Es 2005 KMIDt 2 TX
(WNDU-16 off) 2026 KDFWt 4 TX 24 tr 1825 WHMB 40 IN 320
12 Es 1800 unid channel 2+ KDTnt 2 TX (w/WISH-8 News)
15 ms 1000 KPRY 4 SD 620 16 ms 0555 @KETS 2 AR 730

On January 30, WBAY-2 came on with color bars at 0520, one hour earlier than usual. Before programming, the erp was given as 100 KW visual/10 KW aural. The 10 KW aural surprised me. I thought they were still running 20 KW aural. I wonder when they made the change?

WBAY-2 usually comes on at 0620 on weekends with color bars. Sometimes (rarely) they put their call on the screen too. I usually watch for meteor skip DX before they come on. I usually see CBFT-2 and/or CFAP-2 (which I seldom report). CHBX-2 is usually the dominant station before WBAY sign/on. CHBX runs color bars most of the early AM Sunday. At 0500 they begin programming. One morning before they began programming they listed all the "MCTV" affiliates. I couldn't copy all of them down, but there were a considerable number.

In responses to Doug Smith's question about the "dark stations" in the January VUD, I can say that WDHS-8, Iron Mountain, is not on. The last time I saw anything on channel 8 from there it was WLUC-6's translator (quite a few years ago).

Not much of anything else to report. 73s, Bill

Ernie J. Wesolowski, 13312 Westwood Lane, Omaha NE 68144-3543 (402-330-7758) CST

Equipment:

'84 RCA 26" Color Stereo Receiver/Monitor. Radio Shack UHF Double Bow-Tie. (QTH on high terrain.)

January 1994 23 tr 2130 KHNE 29 NE 126 23 tr 2130 KTKA 49 KS 151
23 tr 2130 KTAJ 16 MO 120 KMCI 38 KS 162
KCPT 19 MO 168 unid channel 39

I'm a new member to WTFDA - joined after attending the Nashville convention. Gotta start somewhere, so this is it! Housing codes restrict me to indoor antennas. 73s.

(Sorry about the housing codes. Welcome to the WTFDA and to Western TV-DX! fm)

Western TV-DX

March 1994

Michael Parks, Route 1, Box 103, Amery WI 54001

CST

Equipment:

Channel Master 1110 Quantum with Winegard PA-1375 preamplifier and RG-11U at 30', Channel Master 4228A with Winegard PA-4975 preamplifier and RG-11U at 35', Alliance HD-73-1 rotor, Channel Master 7206 Hi "Q" trap, and Zenith Z1920W 19" color TV.

November 1993

| | | | | | |
|------------|-------------------|------------|------------------|------------------|------------------|
| 17 tr 2238 | KSNT 27 KS 471 | 2333 | KCAN 8 NE 380 | 18 tr 0032 | K3BCL 38 MN 99 |
| | KTKA 49 KS 478 | | KETV 7 NE 340 | (Winona | KITN-29) |
| 2240 | KPTM 42 NE 359 | 2355 | KHNE 29 NE 434 | (See Note # 1) | |
| | KYNE 26 NE 342 | | (Under KITN-29) | 0043 | W67CH 67 WI 123 |
| 2247 | KOKH 25 OK 734 | 2359 | K52BH 52 IA 247 | (La Crosse | KTTC-10) |
| | KOCB 34 OK 733 | | (Ames | K74CZ 74 MN 101 | |
| | KTLC 43 OK 731 | 18 tr 0000 | KSNF 16 MO 587 | (Winona | KTTC-10) |
| 2250 | KSMO 62 MO 451 | 0007 | KSPR 33 MO 567 | 0047 | KLJB 18(IL) 298 |
| | KYFC 50 MO 455 | 0008 | KDEB 27 MO 568 | 0048 | KJMH 26 IA 322 |
| | KSHB 41 MO 453 | 0016 | KTAJ 16 MO 416 | 0054 | WRSP 55 IL 413 |
| | KCPT 19 MO 451 | 0017 | KDOR 17 OK 641 | 0117 | WTJR 16 IL 378 |
| | KYOU 15 IA 307 | | (Under KDSM-17) | 0133 | KDNL 30 MO 482 |
| 2300 | K33AB 33 IA 217 | 0020 | KFAA 51 AR 643 | | KNLC 24 MO 495 |
| | (Sibley | 0021 | WWSL 46(MO) 493 | 0138 | KNLJ 25 MO 463 |
| 2311 | KMCI 38 KS 473 | | W44BF 44 WI 120 | 0213 | KOAM 7 KS 579 |
| 2322 | Redwood Falls MN | | (La Crosse | 0237 | WIBWt 13 KS |
| | 58,60,62,64,66,68 | | TBN) | | (See Note # 2) |

Note # 1 - K3BCL must be fed by microwave. The KITN-29 signal was breaking up in the same manner that remote microwave feeds do on newscasts.

Note # 2 - Second Home Shopping Spree under that of WEAU-13 with a zero KHz beat between the two.

No DX here since the November 17-18 trops. Hopefully the DX will pick up soon. It's getting to be an awful long winter.

Regarding the new TV networks that are being planned: local affiliates in Minneapolis/St. Paul are to be KMSP-9 (Paramount) and KLGT-23 (Warner). Seems to me that KLGT-23 may be a bit incompatible with Warner if their programming is the least bit like the Fox network's. KLGT-23 is a family oriented station that goes so far as to cut the words "damn" and "hell" from their programming.

Until next time... 73, Mike

Mike Cherry, Box 631, Ganges BC V0S-1E0 (604-537-5201) PST

Equipment:

Kenwood RZ-1 receiver, channel 6 crystal trap. Hitachi 5" black & white monitor, Sony Beta Hi-Fi MTS VCR, Archer 15-578 variable signal attenuator. Antennas: Lindsay CC-30 22 element log-periodic @ 25' agl. Homebrew 6 element 6 meters (50 MHz) yagi (1.5 w.l.) @ 40' agl with Hy-Gain CD-II rotor. Beiden 9913 co-ax on both. Dalco EID-35 TV preamplifier.

December 1993

| | | | | | |
|----------------|-----------------------|------------|------------------|-----------------|----------------|
| 1 au 1732 | CFCN 4 AB 438 | 18 Es 2028 | \$KTVK 3 AZ 1223 | 20 Es 1930 | KORA 3 CA 739 |
| 2 au 1803-1920 | cci chs 2-3 | 19 Es 1932 | KTVX 4 UT 794 | 1943 | KTVU 2 CA 770 |
| 3 Es 2000 | KVBC 3 NV 986 | 1946 | KENW 3 NM 1467 | 24 Es 1729 | KVBC 3 NV 986 |
| | 2014 XHBCt 3 BN | 1959 | KOB 4 NM 1280 | | |
| | 2059 KNBC 4 CA 1048 | | (Video only) | January 1994 | |
| | 2100 \$KEYT 3 CA 1006 | | KMOL 4 TX 1895 | 11 au 1910-1940 | cci chs 2-6 |
| 5 Es 1927 | KNBC 4 CA 1048 | | (Audio) | 14 ms 0531 | KOTI 2 OR 476 |
| | 1944 XHBC 3 BN 1197 | 2000 | KASAt 2 NM | (18 seconds) | |
| | 1957 KVBC 3 NV 986 | 2025 | KREG 3 CO 1028 | 17 Es 2000 | KREG 3 CO 1028 |
| 7 au 1850+ | cci chs 2-5 | 2030 | \$KCNC 4 CO 1097 | 2030 | KTVX 4 UT 794 |
| 17 Es 1931 | XHBC 3 BN 1197 | 2056 | KNOP 2 NE 1224 | 2041 | KCCZ 4 UT 940 |
| 18 Es 2000 | KVBC 3 NV 986 | 2059 | \$KDUH 4 NE 1080 | | |
| | | 2100 | KLNE 3 NE 1311 | | |

What a weird sporadic-E season!! Numerous openings to the same parts of California and northern Mexico dominated the season. There was no E skip to the southeast or east whatsoever!

Mike Cherry (continued)

December 19 was the highlight of the winter. Most of this was caught on videotape as I was working south and east Texas and western Louisiana on 6 meters via double-hop. (Colorado could occasionally be heard. It is the first hop.)

Lots of meteor bursts and "burns" caught on channels 3 and 4, but nothing that could be IDed. MUFs never got any higher than channel 4.

73s Mike VE7SKA

(The November 22, 1993 edition of the Addenda to Television & Cable Factbook reported the call letters of KCCZ changing to KSGI-TV? fm)

Jeff Kruszka, 7706-M N Jefferson Place Cir, Baton Rouge LA 70809 (504-923-0196) CST

Equipment:

1992 Zenith "Sentry 2" 13" color TV (Model #S1318S). UHF: RDX Labs UA-900 preamp, Channel Master 4228A 8-bay @30 ft. VHF: Rabbit ears + quad loops for chs. 3 and 5. Mitsubishi HS-U31 VCR.

January 1994

5 tr 2125 WBBH 20 FL 620 5 tr 2302 WBMG 42 AL 335 5 tr 2307 WFTS 28 FL 550
2130 WFTXt 36 FL WTTO 21 AL 335 15 Es 1630 KIMT 3 IA 880

ST. LOUIS DX GET-TOGETHER!

The first DX GTG since 1984!

DATE: April 16-17, 1994
HOTEL: Budgetel, 318 Taylor Rd.,
Hazelwood, MO (east of Lindbergh Blvd.,
next door to Jack-In-The-Box)

Plans: Possible tours of 89.5 KCFV, Kix 106/Q-104 FM, 73 Country KWRE/All-Hit V-100, 90.7 KWMU, WAORCR-1860, possible Special Events Amateur Radio station (using the call N0UIH) on 145.37 (-) MHz, and an HF Special Events station (using the call W0JRP) on 80 and 20 Meters, DX sessions.

Meals: Breakfast and lunch at place of DXers' choice, Saturday Dinner at Serra's Pizzeria, 12218 McKelvey Rd., Maryland Heights, MO.

Hotel Reservations (314) 731-4200

Contact: Eric Bueneman-N0UIH (314) 839-9751

(or via the Internet at drkx13a@prodigy.com)

or John Tudenham-W0JRP (417) 624-8058

DXers from the Midwest, Mid South and northern Deep South invited!

EASTERN TV-DX

Stephen West
26 Dougherty Blvd. G-8
Glen Mills, PA 19342

March 1994

Deadline: March 5

A snowy winter in the north has curtailed much DXing. A few diligent DXers have forged ahead with reports. The first report is a report which was lost in transit last fall.

Saul Chernos, 57 Berkeley Street, Toronto, ON M5A 2W5

August 1993

1 tr 0145 WUTR-20 NY
8 tr 0900 W38AS NY (Roch.)
10 tr 0230 WOIO-19 OH
0230 WJET-24 PA
0927 WVIZ-25 OH
0935 W39BC Buffalo
19 tr 0030 WNPI-18 NY o/TVO
0115 WPMJ-21 OH

August 1993

19 tr 0136 CBLFT-15 ON
0145 WCLQ-61 OH
22 tr 2130 WVNY-22 VT
2210 WETK-33 VT
25 tr 0600 CFMT-69 ON
0030 WNPI-18 NY

My DX alert number (416) 364-0725

"Most of my time was spent on FM DXing, where I managed to log a long haul from Skowhegan, Maine on August 22-23. I called WETK on their toll free fund-raising number (800) 639-8303 and they mentioned it over the air that they were seen in Toronto! A new state for me (two counting the state of ecstasy? sw) and Maine is rarely heard at Burnt River (only on FM, never on TV).

Harry Hayes, 9 Henry Street, Wilkes-Barre, PA 18702

Equipment: RCA 1971 Color TV, Quad loops switchable for channels 2 and 5 with a radio shack amp.

December 1993

3 Es 2100 WPBT-2 FL
4 Es 2030 UNID-2
5 Es 2030 KUSD-2 SD
11 Es 1725 KUSD-2 SD
1750 WKRN-2 TN
1800 KGAN-2 IA
1843 KGFE-2 ND
2015 KETS-2 AR



December 1993

11 Es 2020 KARK-4 AR
2130 WBRZ-2 LA

January 1994

15 Es 1710 UNID-2-3-4
17 Es 2300 WPBT-2 FL
2320 WESH-2 FL
2327 UNID-4 TX (weather)

"A nice winter season of E skip this year. The January 17th opening happened at the tail end of a large snow storm and preceded a horrible cold wave. I noticed that E skip in conjunction with January blizzards are not that uncommon.

Jeff Wolf, 1131 University Blvd. W. #701, Silver Spring, MD 20902

December 1993

2 tr 1908 WRDC-28 NC
1929 W28AL Front Royal, VA

December 1993

8 tr 0209 WCBS-2 NY (2-11-13 MD had tower maintenance were off!)

William R. Hepburn 35 Lockwood Rd. Brampton ON L6Y 4T7 CANADA

Rcvr: JVC HR-D630U VCR & Icom IC-R100
Ant: attic VHF dipoles & 2nd floor UHF 4-bay

(EST)

DECEMBER 1993

13 TR 1729 WHME-46 IN 355 13 TR 1812 WFLD-32 IL T 17 TR 0714 WOUB-20 OH 325
17 TR 0653 WPTD-16 IN 357 0752 WTJC-26 OH 334
1752 WCIU-26 IL 417 0656 WEMT-39 TN 550
1754 WCFC-38 IL 416 0712 WTAP-15 (OH) 312 15 ES 1752 MUF 4
1755 CBEFT-54 ON 192
Windsor FF

Notes: I hope to finally put up a tower & yagi antenna this spring or summer....

SOUTHERN FM DX

MARCH 1994

SOUTHERN FM DX is for reporters from: AL, AR, AZ, CA, CO, DC, DE, FL, GA, HI, KS, KY, LA, MD, MO, MS, NC, NM, VN, OK, SC, TN, TX, UT, WV & WV. Report today!

Eric Bueneman(NUUIH), 631 Coachway Lane, Hazelwood, MO 63042-1347 CST
 Equip.: Realistic STA-90 AM/FM stereo receiver with Radio Shack VU-0110 antenna at 30' above ground level.

1/2 tr
 0238 Champaign/Urbana 91.7, 97.6 150
 0245 WCIC 91.5 IL Pekin, gr, "The Music you want with The Message of Christ, WCIC" 140
 1/20 gw
 1040 WKBQ 104.1 IL Jerseyville, r(CHR), \$, mention of KASP-1380 AM, "Today's Best Music,"

Q-104", ex 106.5 Granite City, IL, transmitter six miles from here, no splatter onto 103.7 or 104.5, but splatter onto 103.90 and 104.3 remains onto 103.9 & 104.5 remains ferocious.
 1345 WKXX 106.5 IL Granite City, k, \$, "Hot New Country Kix 106", ex-104.1, Jerseyville, IL
 1/20 tr 80 mi.
 2230 Springfield, IL 91.9, 101.9, 103.7, 104.5

The big switch took place at 0530 on January 20, with WKXX leaving a 39 kw signal on 104.1 and moving to the 106.5 spot, which carries a 93 kw signal, WKBQ, as a result, moves from 106.5 to 104.1. Some listeners to WKBQ are already complaining of the reduced signal on 104.1 as compared with 106.5, so the midday DJ on WKBQ invited listeners also to tune to KASP 1380 AM, which has a much stronger daytime signal(5 kw), with its night signal(1 kw)getting out about the same distance as 104.1. The trade was made partly because of the return of former shockmasters Steve Shannon and DC Chymes to WKBQ/KASP. The trade will be advantageous to WKXX, which is now up to signal parity with competitor WIL 92.3(a 99 kw signal). WKBQ, WKXX and KASP have common ownership, all three are owned by Zimmer Broadcasting of Cape Girardeau. WKX will be moving in with WKBQ/KASP shortly. Other stations considering studio moves in St. Louis: KSD 550/KSD-FM 93.7(moving in with KYKY 98.1 in downtown St. Louis), WRTH 1430/WIL 92.3(moving in with KRJY 96.3 in Brentwood), and KATZ 1600/KATZ-FM 100.3/KMJM 107.7 considering moving to the studios KSD is vacating Olivette. 73 and good DX from NUUIH.

Doug Smith W9WI/4, 14 Brookside Court, Nashville, TN 37209-4503

Yet another month without openings here but still more scatter. Well, the "rotating silent locals" did continue. In the wake of the storm & arctic blasts, the following locals have been off for at least a few hours this week: WAYM 88.7, WNAZ 89.1, WGGC 95.1, WRMX 96.3, W271AB 102.1, WQZQ 102.5, WYCO 102.9, WGFY 104.5 and WCVO 107.9. Not to mention WFSK 88.1, WCP 88.5, WRVU 91.1 and WAMB-1 106.7, all of which take routine silent periods even with good weather. At this writing, WGFY is still off, though I expect them back this weekend. Hopefully, after warmer temperatures bring some tropics! UNIDs also sent to Matt(well, the TrS one. I don't think it'll ever be possible to ID the ms unID.) There have been plenty of meteor bursts under all these dead locals but nothing IDable. Local WGFY 104.5 went off early on Sunday, Jan. 8; as I write (late on the 12th)they're still off. Paper says they got moisture in the feedline and it arced, ruining all 900'. Weather this week doesn't look good for replacement either. (Unfortunately, it also doesn't look good for tropics!) In WGFY's absence, WZYP dominates 104.3, WITZ dominates 104.7 and 104.5 is mostly intermod. Memphis poking its head above water only if I get on the west side of a big hill.

12/20 TrS
 1545 KAMS 95.1 AR Mammoth Spring, "K-Country 95", semi-local WGC off 255
 WXLIT 95.1 IL Cartersville, ad 168
 WND4 95.1 AL Huntsville, calls, g 100
 1631 unID 88.5 ?? 2 rock stns., one underground, the other mainstream "rp". Local WVCP off for the holidays. Underground station almost certainly WRAS Atlanta; the other probably (needed) WITU Cookeville.
 1221 TrS
 1255 WRAS 88.5 GA Atlanta, weak o/u WJIE w/Stone Mountain & vicinity news 224
 1908 WREZ 105.5 IL Metropolis, "E2105" 125
 1/9 TrS
 1443 WRVR 104.5 TN Memphis, calls & light oldies local WGFY off all week 179
 1455 WZZK 104.7 AL Birmingham, k, cals 183
 WITZ 104.7 IN Jasper, adcon,ads. 153
 1/10 TrS
 1120 WKBC 104.3 KY Hardinsburg, calls & 114 local ads, o/u WZYP.

1/14 TrS
 1919 WALR 104.7 GA Athens, black oldies & Atlanta ads 232
 1927 WSMT 105.5 TN Sparta, adcon & loc.ads 81
 1/18 TrS, ms (1110 CST)
 0958 WZBQ 102.5 AL Jasper, Birmingham ads 186
 WMOO 102.7 KY Springfield, "Q102.7", o 114
 WBGR 102.7 TN Memphis, classic rock, 179 local ads
 1115 unID 102.9 ?? "Q103FM, country and local 119
 WQPR 88.7 AL Muscle Shoals, classical
 1910 KFIN 107.9 AR Jonesboro, area school closings 219
 WKYR 107.9 KY Burkesville, KY news 93 and ads

More silent locals...A major ice storm on the night of Feb. 10 took the following stations off the air: WAYM 88.7, WQOK 92.1, WYBY 93.7, WGGC 95.1, W257AR 99.3, W271AB 102.1, WQZQ 102.5, WYCO 102.9, WUCZ 104.1, WVRV 105.1, WMOO 105.3,

cont....

SOUTHERN FM DX

Smith, cont.

MARCH 1994

WAMB-1 106.7. Plus WCVO 107.9 was on low power, probably about 4 kw ERP. As a result, the following DX was logged, all of it on my 1990 Ford Escort car radio:

| | | | |
|---|---|--|---|
| 2/11 TrS | 1418 WYEM 92.1 TN Minor Hill, sat.oldies 72 | 2/11 TrS | 1931 WKVQ 90.7 TN Dyersburg, ID w/WKNO 91.1 |
| 1438 WEZK 97.5 TN Knoxville, loc ad 163 | 1440 KEZS 102.9 MO Cape Girardeau, ad 172 | 1937 WNNS 101.5 TN Jackson, talk 110 | WKDQ 99.5 KY Henderson, calls 125 |
| WRK 102.9 GA Columbus, "Rock 103" 289 | 1445 WYNG 105.3 IN Evansville, calls 140 | 1938 WRUL 97.3 IL Carmi, k,calls 152 | 1944 WTRZ 103.9 TN McMinnville, calls 69 |
| 1458 WUOT 91.9 TN Knoxville, calls 163 | WSIUT 91.9 TN Carbondale, c, w/WUOT 169 | 1951 WUEV 91.5 IN Evansville, calls 131 | 2008 WTKY 92.1 KY Tompkinsville, k, CBS nx 77 |
| 1514 WCIL 101.5 IL Carbondale, "CIL-FM" 171 | WWEZt106.9 KY Louisville, part.calls164 | 2009 WSTO 96.1 KY Owensboro, loc.ads 115 | WIKY 104.1 IN Evansville, calls 133 |
| 1521 WVUB 91.1 IN Vincennes, NPR, talk 176 | 1913 WTAOT105.1 IL Murphysboro, alb. r 175 | 2023 WBLZ 106.7 IN Mt. Vernon, ad, MVHS bb 136 | |

Gus Mancuso, 5616 Inwood St., Hyatts, MD 20785

Ratings of area college stations were the big surprise in the Arbitron fall book. WHUR(Howard Univ.)96.3 finished fifth with a 4.5% for its "Quiet Storm" format, WAMU(America U.)88.5 was 12th at a 3.2 share & WDCU 90.1(Univ. of DC) came in 27th at .9%. Other educationals scoring were WETA 90.9 2.4%(16th) and WPFW 89.3 .8%(29th). Class A WMMJ 102.3 continues to rub elbows with the big guns finishing in the top 10 again with a 4.1 share(10th). Urban/rap WPGC enjoying its biggest ratings since its top 40 days in the 1970's, was tops again with a monster 10.1, way ahead of k WMZQ 98.7/1390 @ 5.9%(2nd). Biggest disappointment continues to be SPTS/SPTS talk WTEM(570)eding out its 2nd consec. 1.0 share, finishing behind such unlikelyes as gospel WYCB(1340), lite oldies/big band WDDC(1260), and Baltimore rocker WITY 97.9. Only other AMs to show up WERE news/talk WMAL 630 4.8%(4th), all news WTOP 1500 2.5(15th), talk WRRC 980 1.1(24th) and "Block" format WOL 1450 1.0(25th). Oldie newcomer WBIG 100.3 doubled its one point summer margin over competitor WXTR 104.3 with a 4.2(9th) to WXR's 2.2(18th). Rounding out the top 30 is country WFLS 93.3 with a .7 bumping out fellow c&w rimshooter WRCY 107.7 which had that same share in the summer book. "Classic rock" WCXR 105.9 continues to struggle, coming in at a 1.9 share(20th) and could drop further with WARW 94.7(ex WLIT)now playing rock oldies. Part of WCXR's woes could be blamed on adjacent channel interference in part of the MD suburbs caused by Baltimore's WQSR 105.7. However WJFK 106.7 which also transmits from Virginia has even worse MD reception(due to WMMX)but scored a 4.5 share(tied 5th).

SATELLITE NEWS continued from page 27

MARCH '94

PanAmSat

9 - Dubai United Arab Emirates main feed in PAL 625 lines delete Belgrad service that was on XPDR 4 all of the above were on Ku-band
 TDRS
 delete Gala Americana on 11
 XPDR 1 was showing a test card for Datasat
 Polonia TV - Warsaw is planning to use a channel on this bird to beam a Polish service to the US

That's all for now - see you in 30 with a very large list of planned upcoming services.

George

NEW JERSEY DX GETTOGETHER!

Member Joe Fela announces a one day get together will take place at his place on April 16th, from 1 p.m. to ??? Anyone wishing to attend can either write him at: 150 Robert Place, South Plainfield NJ 07080, or call at (908) 755-3852.

NORTHERN FM-DX

GREG CONIGLIO
5100 GLENWOOD DRIVE
WILLIAMSVILLE, NEW YORK 14221
e-mail: coniglio@acsu.buffalo.edu

For DXers in: MA,NH,VT,CT,MA,RI,NY,PA,NJ,OH,MI,IN,IL,WI,MN,IA,NE,SD,ND,MT,WY,ID, WA,OR,AK,Canada
MARCH 1994 ■ **DEADLINE: The 5th** ■ **LOG CUTOFF: 3 months from postmark**

As you can see, very little DX is going on during this traditional "lull" in the DX calendar year. Reports are mostly people hearing tropo-scatter, meteor scatter: things that persist into the dead conditions. Actually, this can be a good time to clean up on such catches that would otherwise be blocked by a semi-local station that puts in a stronger signal during the regular DX season. On other topics...Joe Fela of New Jersey asked me to announce that he is planning to have a **DX get-together** at his home. This event will be Saturday, April 16th, from 1 p.m. to ??? If you wish to attend, write him (150 Robert Place - South Plainfield, New Jersey 07080) or call him at (908) 755-3852. Thanks Joe!

ALAN R. MILLMAKER (KA9GUL) - 2714 LAKE ROAD - CENTRALIA, ILLINOIS 62801

Equipment: Lafayette 3030 receiver, antenna is Winegard CH6065 up 30 ft. on a Radio Shack Archer II rotor with RG6 coax, no amp

NOVEMBER 1993 DX

8 Tr
2200 WGRN 89.5 IL Greenville

14 Tr
2205 KMIS 106.5 MO New Madrid

17 Tr
2245 WCDV 103.1 IN Covington

22 Tr
2359 KDHX 88.1 MO St.Louis

0058 KWMU 90.7 MO St.Louis

0059 WUSI 90.3 IL Olney

27 Tr
0202 WQQJ 101.9 IL Springfield, Oldies 101.9

DECEMBER 1993 DX

28 Tr
0000 WMMC 105.9 IL Marshall

0011 WBWN 104.1 IL LeRoy

31 Tr
2158 WUBB 93.5 IL Tuscola, NOTE #1

NOTE 1: WITT went off the air, came back on with new call WUBB and slogan of "CD Country"

NOTE 2: Station used to be WCFG and religion, now they have new call WXF and air lite rock.

This is my last report using the Lafayette 3030. My next report will be with a Harmon Karden 3350 receiver which I just purchased. Listening to the SCS one night, a bare 110 Volt AC wire shorted to ground, blowing up the adapter and the 110 Volts travelled into the 3030, blowing out the tape monitor and dial position. Estimated cost of the loss is around \$300. 78'a

RICHARD CONTONE - 162-07 87th ST. - JAMAICA, NEW YORK 11414

JANUARY 1993

14 Tropo
0902 WSIA 88.9 NY Staten Island, FM Atlas says they have a primary radius of 3 km 20

2115 WGMX? 95.9 CT Norwalk, may have changed calls, no ID, nicknamed The Fox (The station's new calls are WEFX-gc) 42

0953 WQQQ? 99.9 PA Easton, no ID, FM Atlas calls it WQQQ (the calls are now WODE-gc) 69

FEBRUARY 1993

2 Tropo
1230 WMJU 106.3 NY Mt.Kisco, "Superstations" referring to WMJV 105.5 Paterson and this (Richard note this the their right call-gc) 68

JANUARY 1994 DX

5 Tr
1053 WXF 97.9 IL Effingham, NOTE #2

9 Tr
0427 WXCL 104.9 IL Pekin

11 Tr
0200 KCLC 89.1 MO St.Charles

0229 WEFT 90.1 IL Champaign

13 Tr
2223 WVJC 89.1 IL Mt.Carmel

2259 WSIE 88.7 IL Edwardsville

2354 WNIN 88.3 IN Evansville

21 Tr
2155 WFYR 97.3 IL Elmwood

25 Tr
1100 KLCR 99.3 MO Boonville

1236 KRXL 94.5 MO Kirksville, "The X"

1733 WENS 97.1 IN Shelbyville

26 Tr
1328 WGCT 105.1 IN Ellettsville

TOTAL NOW STANDS AT 390.

I received a pirate on 91.9 called WJQR. The announcer called it "alternate" radio. Transmissions are very short and almost weekly in times. I will try to follow it. The Pirate is WJQR Jamaica, NY (less than 10 miles from my home), and trouble on 91.9 Mhz. Broadcasts are obscene, but let the FCC find him. I built a transmitter finder, but his output power is not peaking current, so no help from it to look where he is.

WOBM 92.7 FM

NORTHERN FM DX

MARCH 1994

dBRUCE HALL - 5 STIRTON AVE. - BRANTFORD, ONTARIO CANADA N3T 1E2

Equipment: JVC JR-S201 receiver (IF mod with 3 110 khz filters), Magnum Dynalab Sleuth 205 amp, Probe 9 fed with RG6 at 50 feet AGL, Crown Rotor, Distances are in kilometres.

JANUARY 1994 DX

3 MS (Quadrants)
0621 WANV 99.7 VA Staunton, "621 at Power Oldies 99.7 WANV-FM", former TrS 562
1132 WQQE 99.7 AL Dothan, "99-7 Wool FM" 1398
1335 [WNCK] 99.7 SC Port Royal, wx "low tide at the mouth of the Savannah River 6:02PM, and for our listening area our temp currently" ex: WHTK 1192
1500 WRFX 99.7 NC Kannapolis, "Kannapolis - Charlotte - Cascades - Rock Hill - The Fox" 847
1800 WFNL 97.7 WI Sturgeon Bay, partial ID heard "Sturgeon Bay Green Bay" 599
1949 WSPJ 99.7 PA Shamokin, "99.7 WSPJ" this one was 790 watts tropo-scatter 410

THE LIGHT 97.3 FM
Toronto's Classic Hits



GREG CONIGLIO - 5100 GLENWOOD DRIVE - WILLIAMSVILLE, NEW YORK 14221

Equipment: Carver TX-11 tuner, Stereo Probe 9 at about 20 feet or so above ground, CAC11 and RG6 coax used, and an Archer Rotor. Phasing using 2-capacitor phase box and a Jerrold 10-el. TV antenna with 0/10/20 db amp

JANUARY 1994 DX

15 Es
1750 WPCV 97.5 FL Winter Haven, k\$ 1038

1755 WOLZ 95.3 FL Ft.Myers, CJXY Hamilton phased out, oldies music\$ 1155

1759 WMMF 88.5 FL Tampa, Es pest! 1066

24 TrS
(WNUC 107.7 off the air)

1511 WSEQ 107.7 OH Nelsonville, k\$, jingle 305

1519 WMMX 107.7 OH Dayton, finally, long sought after, "Mix 107.7" + calls heard 364

1522 WRCY 107.7 VA Warrenton "Washington's Thunder 107.7" and hot country music. 293

Also heard were un-needed WGTY Gettysburg PA WWSB Alepna MI, WHMQ N.Baltimore OH.

25 TrS
1951 WMGH 105.5 PA Tamaqua, rare 204

2000 WGRX 100.7 MD Westminster, classic rock\$ scattering in over local CHIN, low power? 251

2015 WFMZ 100.7 PA Allentown, CHIN weak 223

January 27 TrS

(WHTT 104.1 off air-ice storm)
2330 CJCZ 104.1 ON Midland, relatively new stn. "Kicks" country, // CJCX 105.9 Orillia 136

2339 {WSSF} 104.3 MD Baltimore, Soft 104.3 and soft a/c mx, last heard as WBSB 271

2343 WNNK 104.1 PA Harrisburg, Wink 104 205

2345 WAEB 104.1 PA Allentown 223

2350 WAXO 104.3 NY New York, hvy metal! 286

WQAL Cleveland OH, WXTR LaPlate MD also heard.

FEBRUARY 1994 DX

5 TrS
2230 WMJU 106.3 NY Mt.Kisco "Superstn" 283

2334 WHCY 106.3 NJ Blairstown, mentioned that town, "Hot Country 106.3" 232

6 TrS
1055 WOWB 105.5 NY Little Falls, scattered up over WGES Oswego with promo/stn addr 193

1504 WKHS 90.5 MD Worton, WXPB ments. 289

7 TrS
2049 WMXO 101.5 NY Olean, moved to this freq. thanks Dave N. for tip, v. weak under CKWF 62

As you can see, things have been decent here tropo-scatter wise. Several new catches from stations that have never made so much as a peep here. That is good, because otherwise, there would be nothing! I can barely recall what a tropo opening is like! Our last even minor enhancement was December 17th. This can be blamed on a very harsh winter here in the Northeast U.S., with bitter cold temperatures (mostly in the low teens here, normal: 30) and above normal precipitation (85" of snow as of right now, with about 65" being normal). In fact we broke a record for most consecutive days with precipitation: 55! Ironically that streak, still intact, dates back to December 17! (I wonder if the heavy snowpack and cold temps. could have something to do with the good scatter?) And no off season skip since the Jan. 15th opening either. Maybe if this pattern breaks, we can get a decent opening. I am looking forward to seeing who bids for the convention in 1994. I have not seen anything in the VUD so that could mean no one has volunteered yet. I am not sure. Thank you to Matt Sittel and Saul Chernos for sending logos recently!

Saul Chernos - 57 Berkeley St. Toronto ON M5A 2W5 (416) 364-0725

November 1993 DX

14 Tr (Toronto)

CKDK 103.9 ON Woodstock, ex: 102.3

29 Tr (Burnt River)

1200 CJQJ 95.5 ON Belleville r OJ95-5FM (NEW)

December 1993 DX

11 Es (North Toronto)

Es unids from 1945-1958 on 88.5 and 99.1

December 14 Tr (Toronto)

0000 WNIC 100.3 MI Dearborn r

0028 WEZO 93.3 NY Avon, m NEW

0032 CJQJ 95.5 ON Belleville r NEW

0044 WQRS 105.1 MI Detroit c

0055 WGPR 107.5 MI Detroit

0058 CIQM 97.5 ON London Q-97.5-FM*

0122 WVBR 93.5 NY Ithaca

A little December opening that promised to be much more but wasn't. This is all the FM DX I've had lately.

78's. Saul.

SPECIAL REPORT - Carribean FM Information

Contributed by Doug Smith, who got this information from newspaper clippings given to him by Tom Bryant. Thanks!

Trinidad & Tobago:

Music Radio 97

95 FM Stereo

105 FM Radio Tempo

100 FM Stereo

98.9 FM Radi-Yo

WABC 103 FM (this station appears to cater to [Hindi] Indians)

106 Prime FM Stereo

Martinique:

R. Evangelique 104.8 Fort de France (relig.)

R. Campus FM 96.7 Fort de France

R. Merci Seigneur 92.4 Fort de France

R. Leve Doubout Matinik 97.5 Fort de France

90.8 Riviere Pilote

91.0 Saint Pierre

R. Alizes FM 96.9 105.2 Trinite (so why do they call themselves 96.9?)

R. Media 250 88.3 Saint Pierre

R. Archipel 99.1 Trinite

R. Saint Louis 99.5 Fort de France

R. Jeunesse 96.4 Basse Pointe

(sports & culture)

R. Balisier 102.0 Fort de France cultural

106.8 Riviere Pilote

R. Inter Tropicale 99.9 Trinite

R. Banlieue Relax 103.4 Fort de France

R. Actif Martinique 92.8 Fort de France

102.4 Riviere Pilote

R. 22 99.3 Basse Pointe

R. Horizon 2000 FM+ 88.9, Riviere Pilote

R. Frequence Caraibe 89.5, Saint Pierre

(cultural info)

106.6 Saint Pierre

Lorrain FM 101.3 Basse Pointe



Martinique continued.

R. AS 106.2 Fort de France

R. Pelée FM 105.6 Mome Rouge

R. Mome Ceron 95.1 Mome Rouge cultural

R. 105 100.6 Fort de France (again, so why "R. 105"?)

R. Liberté 88.1 Trinite

R. Sud Est 89.3 Trinite (R. Southeast)

R. Ase Piere An Nou Lit 94.9, Riviere Pilote

98.1 Saint Pierre

R. Associative M'man Do 96.2, Fort de France

R. Dynamique Macouba 104.1 Basse Pointe

R. TI Manmay 105.4 Riviere Pilote

R. Esperance 91.6 Fort de France

religious?

Module 104 106.5 Trinite

R. Fusion 95.3 Fort de France

103.2 Mome Rouge

R. RCI Martinique 98.7 Fort de France

91.2, Trinite

103.0 Riviere Pilote

104.6 Mome Rouge

R. RCI 2 104.4 Fort de France

97.9 Trinite

88.5 Riviere Pilote

R. Campeche 101.6 Fort de France

98.3 Riviere Pilote

R. Sun FM 97.1 Fort de France

102.7 Trinite

90.6 Mome Rouge

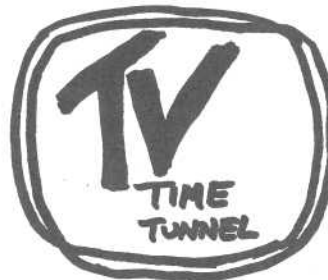
R. ICS 103.9 Fort de France

103.6 Mome Rouge

89.7 Riviere Pilote

R. Frequence Atlantique 93.6, Fort de France

105.9 Trinite



WRITTEN FOR THE WTFDA AND "VHF/UHF DIGEST" BY TOM BRYANT, 849 TODD PREIS DRIVE, NASHVILLE, TENNESSEE, 37221. (615) 646-2000

After several months of single-topic articles and/or photo features, I decided to do a bit of spring cleaning and file updating.

As a result, this column is more of a newsletter than the usual historical content; but there were several areas that needed attention and this seemed to be the best way to bring you up to date on everything.

CONVENTION VIDEO: You might be interested to know that almost 40 copies of the 1993 Nashville WTFDA Convention video have been sent out...the largest number of orders since I started making them available in 1990. A few of the early copies were defective (I had an undetected machine malfunction) and will not track properly...particularly on the second section of the presentation. If you were unlucky enough to get a bad copy, please let me know and I'll replace it at no charge. By the way, copies are still available. A check for \$8.00 (U.S.) to the address at the head of this column will get one on its way in a few weeks.

ST. LOUIS SLEUTH: Thanks to Keith Smith (St. Ann, MO) for ferreting out the location of Poland Spring, ME. This city of license [for WMTW-8] doesn't seem to show up on many maps, but Keith found it in the 1994 AAA road atlas. He says it's about 3 miles due SSE of Poland on ME State Hwy 26, and about 1 mile N of State Hwy 122. Poland Spring is also about one mile due west of Range Ponds State Park. Keith adds that Poland, West Poland, and Poland Spring form an isosceles triangle pointing SE; the apex being the (until now) mystery city...Poland Spring. Thanks Keith!

DIXIE DX VISITORS: As Tennessee is not only a vacation destination, but a pass-through point for those bound for the land of beaches and palm trees; I get occasional calls from club members (WTFDA, IRCA and NRC) who are including Nashville in their travel plans. Whether it's a quick cup of coffee, a tour of WSM, or a more lengthy visit at the house, it's always fun to get together with fellow hobbyists...and I've made it a point to do so whenever possible. Feel free to call or write if you're going to be in the area. Of course it's not always possible to get schedules worked out, but at least we can try.

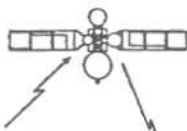
WE GET LETTERS: Thanks to the growing number of WTFDAers who have submitted material for use in the "TIME TUNNEL" column. At the moment I have a wide variety of contributions from more than 20 of you. I'm not promising that everything will used, or when it will appear if it is; but I do appreciate all information you send. I should also note that as a rule, photocopies of photographs cannot be used because they do not reproduce well. VUD's printing process tends to make photos turn out very dark...so if you do send anything of that nature, please try to keep it quite light, but as 'contrasty' as possible.

IN THE HOPPER: I have a lot of new information on WRAY-tv (52) and will be getting to '...the rest of the story...' about the unique Princeton, IN operation in the near future. CITY-tv in Toronto is an operation with a colorful (especially 'BLUE' movies) past; and that's another upcoming topic. Early test pattern and ID slides are extremely popular and I've recently come into possession of another very large collection...you'll get to see 'em all! There's information upcoming on early coaxial cable and microwave network links. Plus A LOT MORE! Finally, after many months of correspondence, lots of long distance calls, and a trip to Saskatchewan; I have assembled what I think will be an interesting finale to the tale of Warmley, SK. You'll join me for the ride from Bismarck to Warmley (complete with unusual stops along the way); learn what I found when I reached my destination; and get a glimpse of the history of this prairie outpost that is city of license for CFSS-tv (3).

DON'T TOUCH THAT DIAL...[unless there's skip coming in]!!!

NOTE: I am putting together a list, for publication in the VUD, of members who are available for contact through electronic mail ("e-mail"). This is becoming more and more popular, and widespread, thanks to the rapid growth of the computer information highway known as the "Internet". I can be reached in this manner, as can a few other VUD editors. If you have such a computer account, whether on Compuserve, Prodigy, etc. or with a university or some other place of business, and would like to be listed on this list of such WTFDAers, let me know, either via mail, or you can also contact me through my e-mail addresses listed in the NFM column header: coniglio@acsu.buffalo.edu, or also v131kkdn@ubvms.bitnet

SATELLITE NEWS



George W. Jensen
4604 Arintana Avenue
Baltimore, MD 21206-4220

Halt the presses and stop the yearly review. As soon as I thought things has stabilized, they went wild making the yearly list incredibly dated. On January 20th all hell broke loose with the Canadian E birds - both E1 and E2. The first to go out of control for most of the day was E1 which after many hours was finally stabilized. But, then E2 went berserk and may for all one knows be on its way to the moon, Pluto or the Pacific Ocean. Its gone - resulting in the need for an incredible number of transfers to E1 and others. Here's whats up as of AM - Saturday, January 22.

C-Bank E1

- 1 - SCPC
- 2 - TSN Sports Network
- 6 - WDIV - Ch 4 - Detroit
- 8 - CHCH - Ch. 11 - Hamilton, Ontario
- 9 - The Weather Network
- 10 - WXYZ - Ch 7 - Detroit
- 11 - CBC
- 12 - WJBK - Ch 2 - Detroit
- 13 0 CBC World News Service
- 14 - WTVS - Ch 56 - Detroit
- 15 - CBC French - Montreal
- 16 - CTV feeds
- 17 - CBC
- 18 - CITV - Ch 13 - Edmonton, Alberta
- 19 - TVNC
- 20 - CBMT - Ch5 - Montreal
- 22 - BCTV (CHAN) - Vancouver
- 23 - CBC North
- 24 - Canal 5 - Eurotele - Paris via Montreal
aside from change has been testing encryption

Ku-Band E1

9V feeds

- 10H - Radio Quebec - CIVM Montreal
- 12H - CFJP - Television Quatre Saisons
- 16 - Musique Plus
- 17V - Access Network
- 18H - Super Ecran
- 19V - Canal Famille VC2
- 20 TV Ontario English
- 21V - Family Channel West?
- 23V - Ontario Test Pattern
- 24H - Ontario Legislature
- 25V - Much Music
- 26 - RDS French Sports (?)
- 27 - ? using an Oak/Orion type encryption
- 29V - Knowledge Network

There are a few others unID'd - Atlantic Satellite Network possible on 31V. All regional beaming as on E2 is discontinued at the moment and signal strengths rather poor.

CTV has moved most of its feeds to Galaxy 6 XPDRS 4, 6, 24 and may be frequently moving. Other former ANIK E2 users may also soon be moving to this bird.

Solidaridad 1 is on the air. It is tightly nestled between what was E@ and E1. I wonder if the proximity could have caused the Aniks problems. Many former M1 services have moved to this bird, but I will never be able to ID anything from this, since despite its very strong transponder powers - the signal now put into this area - fair to poor in the past is now almost unreadable. I will need a lot of help from dish owners near the border to report anything on this bird in the future.

SATELLITE NEWS

MARCH '94

Many other changes now listed below.

- C5 on the review list (not Aurora) is really C1
- C1
- 5 - KDVR - Ch 31 - Denver, Colorado - FOX vc2
currently available as part of Denver packages
- 9 - Americana
- 11 - Network I - soft porn unscrambled
- 16 - add - Cal-Channel - Hong Kong Jade Network sometimes
- 21 - La Cadena Deportiva Prime Ticket
- C4 -
- 7 - Bravo - now full time
- 14 - Fitness Channel now Cable Health Club
- G1 (due replacement after March '94
- 4 - TV Food Network
- ASC 1
- 7 - Christian Television Network
- 11 - RAI America
- 12 - Worship (only - now full time)
- T303
- 17 - Adam and Eve vc2 planned
- 19 - Spice 2 VC2 planned
- Morelos 2 - to be replaced Spring 94 at 113 W
will be named Solidaridad 2
- Solidaridad 1 is at 109.2 West
- Anik E1 - Canadian Exxtasy was VC2 at XPDR 20
location now uncertain....was to move to
G6 during emergency
- Hughes DBS1 - KU SuperBird IS testing non video
at 101.2W. DBS 2 will launch is Spring '94 and be
at 100.8W
- SBS 2 is being reposition to 74 W
- Telstar 401 now located at 97 West and probably on
air as you read this
- Galaxy 3
- 1 - Interactive VIA TV - delete to ????
- 23 - Access America
- many shopping channels flipping all over the place
on this bird
- Galaxy 7
- 7 - Good News Network - Seventh Day Adventists
- 9 - Irish Channel VC2
- 17 - Dubai TV - United Arab Emirates (will be VC2)
- 20 - NET - NaTIONal Empowerment Television
- 22 - A Playboy Service VC2
- Telstar 402 to be located at 89 West - Spring '94
- SBS 4 - 77 West - being activated by NBC - K2
is aging and was defective shortly after launch
anyway.
- SBS 3 - will relocate at 72 West
- Satcom F2 72 W
- On Satcom F2 - delete
- 5 - NASA
- 7 -
- 13 NASA Select
- Add
- 7 - misc stuff
- 8 - Denver Teleport
- 15 - Showcase America
- 16 - KBL Sports - Pittsburgh VC2
- Spacenet 2
- 2 - GEMS - now VC2
- 5 - Nasa
- 9 - NASA Select
- 11 - NBC Canal de Noticias

SATELLITE NEWS continues on page 21

UHF-DX: EUROPE vs. USA

by Joop J. Prosée, Spanbroek HOLLAND

Action calls for reaction, so consider this article as a reaction to Mark McCarthy's June 1993 VUD article concerning the description of the P7 parabolic UHF dish. It's very interesting to see that there exists a rather big difference between the optimum UHF TVDX-installation in Europe and the USA. Whilst in the USA huge parabolic dishes like the P5, P6 and P7 are considered as "top of the line," serious European TVDXers do use rather big special aerials that are based on the Yagi principle. The so-called "bowtie" design, which is widely available in Europe in a 4-bay version, is not very popular among TVDXers. Only in the UK do some DXers promote the stacking of 2 or 4 of such antennae. On the continent they are not used by serious DXers.

Please don't think that European TVDXers do not know of the American parabolic dishes. Back during the 1970's the P6 and P7 were imported to Holland. The peak for the P7 however was reached around 1985 when a Dutch antenna factory imported many of these parabolic dishes. At that time, the Channel Master 7' dish also was a rather normal thing on the roofs here in Holland. Unfortunately the stormy winters here decimated the P7's within a few years. In other words, the mechanical reliability was rather bad in our climate. In that time several tests between European UHF Yagi top designs and the P7 were carried out.

Let me first give a description of the European UHF-DX "top" models. All these designs are of the Yagi principle, but the big trick lies in the fact that every single antenna consists actually of four coupled simple Yagi's. The directors are shaped in a special way, resulting in four normal single directors. A row of about 20 of these four-way directors leads the received signal to an unusual 1-wavelength dipole. Normally the Yagi principle requires a dipole that is half a wavelength. The reflector section is formed by a construction that is very similar to that of the reflector of a corner-reflector antenna. Technically spoken, one could really say that these antennae consist of a corner-reflector antenna that is fed by four rows of Yagi-directors.

The thought behind this concept is the magnetic coupling of the four rows of directors, resulting in a stronger signal from the 1-wavelength dipole than from a similar simple Yagi antenna. Advertisements state for this type of antenna: "Four Antennae In One." Personally I don't think that this is the whole truth, but the results of these Super Yagi's are quite remarkable. And it's the result that counts for DX-equipment.

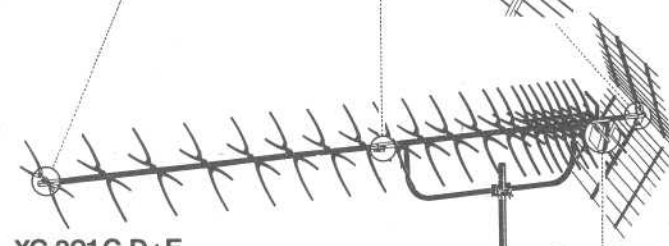
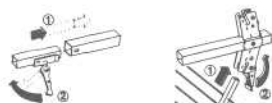
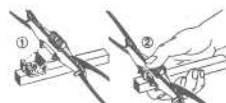
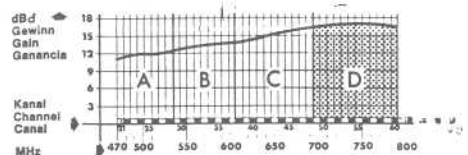
The trendsetter for these type of super Yagi's is the German factory of FuBA, that already launched these remarkable antennae in 1966 as the FuBA XC3-principle! A very strong point lies in the fact that this design has never been altered in an electrical way up to this very moment. Soon after the launching of the FuBA XC3-principle several other important antenna factories came out with their own designs based on the XC3-principle, most of these also from West Germany such as Hirschmann, Kathrein, Stolle and Astro.

Around 1970 Dutch TVDXers found out that the FuBA XC391-types were very well suited for UHF-DXing. Especially the XC391 type: D was and is still an almost optimal UHF wideband antenna with far better performance than bowtie and "normal" wideband Yagi types. This XC391-D type is designed for an optimum performance for the European channels 49-60 (North American channels 50-67). Because of the Yagi wideband-principle for lower frequencies than the design frequency, the XC391-D is also very well performing on channels E21-48 (ch A14-49), together with the design range the total reception range is called; the application range. Even the higher channels E61-63 (A68-70) can be received with satisfactory results with the D-type. What sort of gain, front-to-back ratio etc. can we expect from such an XC391-D type? This antenna has a mechanical length of 2.26m (7'5") resulting in a horizontal angle of 44 degrees on E21 (A14) and 21 degrees on E60 (A67). An F/B-ratio for the design-area E49-60 (A50-67) of 30 dB (!) and slightly worse (4 to 1 dB) between E21-48 (A14-49). A gain of 16-17 dBd for the design-area and a gain of 12-16 dBd for the E21-48 (A14-49) area. Of course these are not really astonishing cyphers but the very good F/B ratio compared to that of the P7 is remarkable. The big secret and success of this FuBA-design for TVDXers is the way these antennae can be stacked. Two broadside stacked XC391-D aerials generate real Super DX-quality. In Mark McCarthy's articles the emphasis is always laid on the necessity for small horizontal angles for serious DXing. Well, what do you think of

UHF DX:

EUROPE vs. USA

XC 391 D



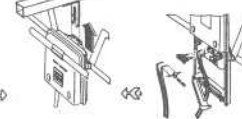
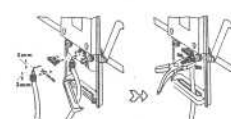
XC 391 C, D + E

Montageanleitung

Mounting instructions

Instructions de montage

Instrucciones de montaje



75 Ω

300 Ω

| | A | B | C | D | E |
|----------------------------------|--------------|-------|-------|-------|-------|
| Order Number | 14391 | 14392 | 14393 | 14394 | 14395 |
| Design Area | E-Chls 21-28 | 29-37 | 38-48 | 49-60 | 61-68 |
| Preferential Range | E-Chls 21-28 | 21-37 | 21-48 | 21-60 | 38-68 |
| Number of Elements | 91 | | | | |
| Mounting | H | | | | |
| Electrical Data | | | | | |
| Impedance | 75/300 | | | | |
| Gain | 16 | | | | |
| F/B-Ratio | 28 | 30 | 31 | 30 | 28 |
| Horiz. Angle in ° | 25-21 | 28-19 | 34-19 | 44-21 | 35-22 |
| Vert. Angle in ° | 28-23 | 33-21 | 40-22 | 46-21 | 36-22 |
| Electrical Length | 5 | 5,2 | 4,6 | 4,7 | 5 |
| Mechanical Data | | | | | |
| Windload in kilopascal(80kp/m2) | 20,3 | 18,8 | 17,3 | 15,8 | 14,3 |
| Windload in kilopascal(110kp/m2) | 28,2 | 25,7 | 23,7 | 21,6 | 19,6 |
| Mech.Length | 297 | 289 | 233 | 225 | 223 |
| Width | 50 | | | | |

an angle of 16 degrees (using the 3 dB beamwidth standard) on ch E21 (A14) and even 8.5 degrees on ch E60 (A67)! And don't let us forget the increase in forward gain, because of the stacking, of 2.5 dBd over the complete frequency area, resulting in a gain figure of 19 dBd for the design area and 14 to 19 dBd between channels E21 (A14)-E48 (A49). F/B ratio will remain approximately the same as for one XC391-D. No wonder two stacked XC391-D's have become the standard UHF DX-installation in Holland, Belgium and Finland!

The big difference between the FuBA products and the other named brands is the very open policy of FuBA with inside information about stacking etc. They give exact measuring for stacking distances, horizontal and vertical angles and gain figures that can be expected when you stack their products. On the other hand the FuBA XC391-D is considerably cheaper, has lesser volume, weight and windload than the comparable Hirschman Fesa 818N60. While two XC391-D's perform superbly, tests have shown that stacking two Hirschmann 818N60's will lead to very disappointing results. Financially, one can buy two XC391-D's for the price of one 818UN60!

The complete FuBA range consists of the XC391 types A to E. While the D-type can be considered as the UHF-wideband antenna, the other types are real channel group antennae. Type XC391-A covers channels E21-28 (A14-24) 17 dBd, XC391-B is designed for channels E29-37 (A25-36) 17 dBd. The application range: channels E21-37 (A14-36), XC391-C is for channels E38-48 (A26-50) 17 dBd. Application range: channels E21-48 (A14-50), XC391-D: see above. Ending with the XC391-E type that is designed for optimum performance in channels E61-68 (A68-77) 16 dBd. The application range of the XC391-E is: channels E36-68 (A33-77).

The absolute DXers delight can be reached by stacking four D-type FuBA's in a broadside way. Maximum gain goes from 17 dBd for channel E21 (A14) via 22 dBd for channel E55 (A60) to 21 dBd for channel E60 (A67). Horizontal angles become real "razor-sharp," 8 to 7 degrees for channel E21 (A14) and 5 to 4 degrees for E60 (A67) can be reached when the stacking is carried out properly. It is very clear to see, that the European Super UHF-Yagi's have great DX-potential, especially when you stack two or four of them.

What can be said about the comparison of the P7 with some of the above mentioned European wideband designs? One of the first things that were mentioned about the P7, was the rather moderate F/B-ratio between 20 and 25 dB. Some 4 to 6 dB lower than the European Yag models. The F/B ratio is in the heavily crowded ether of these days of much more importance than extreme forward gain. What can you receive with an antenna with much forward gain and a bad F/B ratio? The P7 comparisons were with single European models, broadside stacked antennae were not compared with the P7. Up to channel E57 (A62) differences in gain were not remarkable with somewhat more overall gain for the Yagi's, approximately 1 to 1.5 dBd. From A62 to A77 the P7 had considerable more gain (19 dBd), than the Yagi's except for the Hirschmann 818UN60 which is also performing quite well in this higher frequency range. We have to consider however, that the rest of the yagi types mentioned have a highest design channel of E60 (A67), while the P7 can handle A83! After all, the P7 never became real popular in Europe. And there were several reasons for it.

Firstly: the financial issue. In 1985 a P7 cost in Holland and West Germany \$220. In that time the most popular European Yagi, the FuBA XC391D cost \$55. So the conclusion is obvious, when you choose for two stacked FuBA-D's you got better performance for approximately half the price of a P7.

Secondly: the mechanical issue. The P7 is heavier, spacier and has more windload than one or even two FuBA's D. The mastspace needed for a P7 lies around 2.4 meters (8'). Normally we use so much space for a complete TVDX-installation with from bottom to top, VHF-low, VHF-high and UHF aeriels.

With this article I hope to have given interesting information about the types of UHF-antennae in use with European TVDXers.

WIDEBAND UHF AERIALS

THE EUROPEAN POINT-OF-VIEW ON DX ANTENNAS FOR THE BAND

The enthusiast who wants an aerial giving him coverage of the whole UHF spectrum is faced with a bewildering selection of aeriels from which to choose. He will also find that there are conflicting claims over aerial gain - and he'll probably receive many a recommendation for this make of aerial or that one. After all, someone who's bought a particular aerial and received a great many stations during a good opening will obviously comment favorably about the aerial of his choice. During 'average' conditions he'll have received tropospheric scatter signals (flutter and fading) from stations perhaps 300 miles distant, confirming his view of the aerial's excellent performance. Another enthusiast, on the other hand, will have received similar results using a different make of aerial. If we cosited the two aeriels, mounted them at the same height and used the same length of feeder, the results would undoubtedly be much the same - the aeriels produced by reputable manufacturers give similar performances for a given number of director elements, type of reflector system, etc.

The Long Yagi

The 'long Yagi' with multi-element director assemblies has been popular over the last decade. Much initial research on the system was done by Fuba (W. Germany), who first introduced this type of aerial on the domestic market. Since then the same basic design has been adapted by various continental and UK manufacturers. The latter have tended to modify the director assemblies somewhat, while the continental manufacturers have generally kept to the original look of the thing and its performance characteristics.

The highest frequency that can be received by a long Yagi is determined by the dimensions of its directors. If the directors are cut to say ch. 60, higher frequency signals will not be accepted and pass along the chain, but will be reflected. In addition, the directional polar response of a ch. 21-60 system becomes sharper with increasing frequency until the highest designed-for channel is reached. At this point the horizontal beamwidth is typically 22-25° between the -3 dB points. Beam width is directly related to forward gain. Thus for a typical wideband long Yagi the lowest gain/widest horizontal beamwidth (typically 40-45° at the -3dB points) will be at ch. 21, the performance rising to its most efficient towards the top end of the bandwidth over which it is designed to operate.

Gain

It's the gain figure that generally sells an aerial. But as we've seen, this varies with frequency. In the case of a wideband long Yagi, the gain at the high end of the spectrum will be typically some 6dB higher than the gain at the lower end, i.e. ch 21. The gain of a so-called 92/92 element UHF Yagi of the type shown in Fig. 1 is 10.5dB at ch 21, rising to a peak of 16-16.5dB at ch. 56 (see Fig. 2). These gain figures are relative to a half-wave dipole. With a reduced bandwidth, to cover say chs. 21-30, the overall gain is higher, but still rises with frequency.

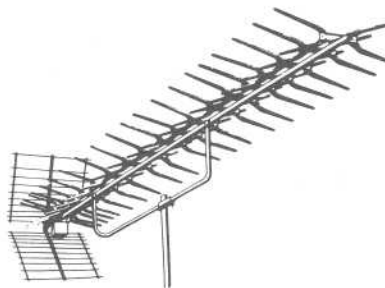


FIG. 1: Typical long Yagi with multi-element director assemblies.

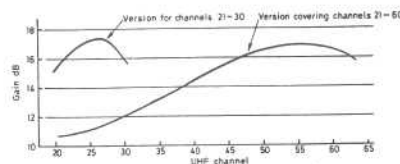


FIG. 2: Gain characteristics of wide and narrow band versions of the type of aerial shown in Fig. 1.

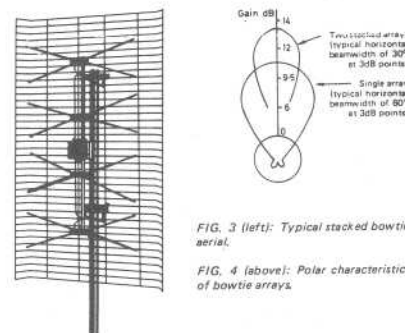


FIG. 3 (left): Typical stacked bowtie aerial.

FIG. 4 (above): Polar characteristics of bowtie arrays.

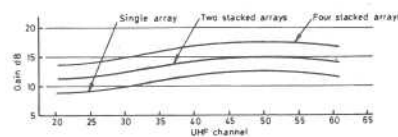


FIG. 5: Gain characteristics of the type of aerial shown in Fig. 3 - single and multi-stacked versions.

WIDEBAND UHF AERIALS

DX Considerations

The problem with choosing an aerial system relates to the performance points mentioned above, the local channels in use - and the depth and contents of one's pocket!

Say the local transmitters use the middle UHF channels. This might suggest the choice of an aerial covering channels 21-48. There will be minimal or no gain above ch.48 however, while the random polar response will mean that the high level local channels will come in off beam. This could result in cross-modulation and the appearance of the local signals on channels elsewhere in the UHF spectrum. An aerial that retains its performance within the local aerial group will ensure that its directional characteristics can be used to receive more distant adjacent channel signals that lie in directions other than towards the local transmitter.

The reduced gain of such an aerial at the lower end of the spectrum will help in discriminating against local signals - but will make reception of many distant signals difficult, the lower UHF channels being particularly productive from the DX point of view. The fact that the aerial retains its directional characteristics, albeit with a wider bandwidth, will provide a degree of local channel rejection, as noted above.

If the local signals are in the middle of the UHF spectrum, one has a problem indeed. If you're going to use a single aerial under these conditions, a wideband one would be the best selection. Should the budget permit purchase of lower UHF and upper UHF channel group aerials however, the coverage would be that much more efficient. A mid-UHF band system can be adapted for high-UHF coverage by replacing the mid-UHF band reflector with a low-UHF band type.

In general then the wideband long yagi retains its directional characteristics over its design bandwidth, but the gain variation is substantial between the extremes of the bandwidth. For effective DX use at UHF, maximum possible gain is obviously wanted. The retention of a narrow horizontal beamwidth is even better.

Stacked Bowtie Arrays

An alternative approach is to use a type of UHF aerial with a gain variation of only 3dB over the whole bandwidth and considerably more gain at the lower end of the spectrum than a wideband long Yagi. A type of aerial that's been in use for many years is the stacked bowtie/collinear system - such as the Wolsey Colour King and others (see Fig. 3). The gain of a single such array (with four bowtie dipoles and a common reflector) over the bandwidth varies from about 10dB up to a shallow peak of some 13dB. This is only a moderate gain figure - and the horizontal beamwidth is alarmingly wide, typically 65° at the -3dB points.

One advantage of this type of aerial is its wide vertical capture area. Often the signal strength of the three or four local channels varies at a receiving site. Adjusting the aerial height may similarly alter the signal levels. With four stacked bowties arranged one above the other such variations are smoothed out. The result is a much more even response. Use of the stacked bowtie system in valley or tidal locations where scattering of signal occurs - due to hill or wave top diffraction - is particularly useful and will often outperform the in-line Yagi (the latter having its gain concentrated into a limited height profile, compared with the stacked bowtie with its wide capture area).

It's possible to use low-loss combining filters (not the traditional combining harness) for wideband UHF operation. Assuming that equal lengths of coupling feeder are used to give in-phase signal combination, a power gain of 2.8dB can be obtained over the whole band. If we combine two stacked bowtie arrays in this way, we will achieve a gain of about 13dB at the lower end of the bandwidth, rising to some 15.5 dB at the high gain part of the coverage (see Fig. 5). If we mount them side by side the horizontal bandwidth will be reduced to typically 30°. The low band gain at 13dB is some 2.8dB up on a wideband long Yagi - it's almost equivalent to that of two stacked long Yagis over the low end of the UHF band!

The cost of this improved efficiency is interesting. Since the construction of a bowtie array is simple and relatively inexpensive, even allowing for the combining filter, the overall cost of a double stacked bowtie array is less than the cost of a single long Yagi. The wide vertical capture area is a further advantage, resulting in improved overall performance compared to a long Yagi. True, the latter has high gain - but concentrated in a relatively small part of the spectrum. It's been demonstrated that weak, scattered UHF signals can be quite height conscious, resulting in the signal level obtained at one height being reduced at greater or lower heights. For the true connoisseur, four such bowtie arrays can be stacked and combined using an appropriate filter. The system gain is most attractive.

Conclusion

My conclusion is that a twin (or quad) stacked bowtie system will give a better and more consistent overall performance, particularly where scattered trans-horizon signals are being sought. I'd naturally be interested in the comments of those using the different approaches discussed here - even better, the observations of those who may have changed from one to the other.

N.B. Gain figures in the above article relate to a half-wave dipole (dBd) reference standard.

VHF-UHF UTILITY DX

WEATHER - AIR - MARINE - PSB

BILL HEPBURN - 35 LOCKWOOD RD - BRAMPTON ON - L6Y 4T7



WEATHER RADIO

NEW STATIONS

| | | | |
|----|---|--------|--|
| ON | ? | 162.55 | LAVANT, EE/FF, on air!, (relays XLJ-696 162.40 Ottawa). |
| | ? | 162.? | LINDSAY (to relay VEU-671 162.55 Peterborough). |
| | ? | 162.55 | MOOSE CREEK, EE/FF, on air!, (relays XLJ-696 162.40 Ottawa). |
| | ? | 162.55 | TOBERMORY, c.p. (may use low-power FM instead ?) |

AERO WEATHER

NEW STATIONS

| | | | |
|----|------|---------|-----------------------------------|
| AR | KBYH | 122.7 | BLYTHEVILLE - ARKANSAS ATIS |
| CO | KMTJ | 135.225 | MONTROSE - ASOS |
| GA | AHN | 109.6 | ATHENS - VOR-MACON HIWAS |
| | DBN | 113.1 | DUBLIN - VOR-MACON HIWAS |
| | HRS | 109.8 | HARRIS - VOR-MACON HIWAS |
| | LGC | 115.6 | LA GRANGE - VOR-MACON HIWAS |
| | RMG | 115.4 | ROME - VOR-MACON HIWAS |
| IL | K3HA | 119.275 | CHICAGO - LANSING AWOS |
| IN | KHNB | 119.675 | HUNTINGBURG - AWOS |
| IA | KBNW | 120.925 | BOONE - AWOS |
| | KMUT | 119.775 | MUSCATINE - AWOS |
| ME | KFVE | 135.725 | FRENCHVILLE - ASOS |
| | KB20 | 135.775 | FRYEBURG - ASOS |
| | K9B9 | 135.725 | WISCASSET - ASOS |
| MA | ? | 118.025 | MT WACHUSETT - TEST AWOS |
| MI | KPHN | 118.375 | PORT HURON - AWOS |
| MN | KAUM | 119.025 | AUSTIN - AWOS (ex-JAY 108.2) |
| NH | KAFN | 135.875 | JAFFREY - ASOS |
| | KPSM | 132.05 | PORTSMOUTH - PEASE ATIS |
| | KHIE | 135.925 | WHITEFIELD - ASOS |
| NJ | ? | 127.55 | ATLANTIC CITY - TEST AWOS |
| NM | LVS | 117.3 | LAS VEGAS - VOR-ALBUQUERQUE HIWAS |
| NY | KROC | 124.825 | ROCHESTER - ATIS (ex-ROC 110.0) |
| PA | K1N9 | 126.25 | ALLENTOWN - QUEEN CITY AWOS |
| | KHZL | 119.375 | HAZLETON - AWOS |
| TN | KM02 | 123.875 | DICKSON - AWOS |
| | KJAU | 124.975 | JACKSBORO - AWOS |
| | K2M2 | 120.175 | LAWRENCEBURG - AWOS |
| | KM54 | 118.325 | LEBANON - AWOS |
| | KM52 | 120.525 | LEXINGTON - AWOS |
| | K8A3 | 126.175 | LIVINGSTON - AWOS |
| | K6A4 | 122.225 | MOUNTAIN CITY - AWOS |
| | K1M5 | 118.175 | PORTLAND - AWOS |
| | KGKT | 126.875 | SEVIERVILLE - AWOS |
| | KSRB | 128.25 | SPARTA - AWOS |
| | KBGF | 121.675 | WINCHESTER - AWOS |
| TX | KPRX | 119.675 | PARIS - AWOS |
| WY | KCOD | 135.075 | CODY - AWOS |

VHF/UHF UTILITY DX

FREQUENCY CHANGES

| | | | |
|----|------|---------|--------------------------------------|
| AL | KAUO | 132.575 | AUBURN - AWOS (ex-119.275) |
| CO | KDEN | 134.025 | DENVER - ATIS (ex-124.45) |
| | KHDN | 119.275 | HAYDEN - AWOS (ex-135.075) |
| GA | KFTY | 120.175 | ATLANTA - COUNTY ATIS (ex-119.0) |
| IN | KIND | 124.4 | INDIANAPOLIS - INDY ATIS (ex-125.35) |
| MI | KESC | 126.475 | ESCANABA - AWOS (ex-128.575) |

CALL CHANGES

| | | | |
|----|-----|-------|--|
| NM | CME | 116.1 | ROSWELL - VOR-ALBUQUERQUE HIWAS (ex-ROW) |
|----|-----|-------|--|

STATUS CHANGES

| | | | |
|----|------|-------|--|
| AR | PBF | 116.0 | PINE BLUFF - VOR-JONESBORO HIWAS Out of Service UFN |
| CA | KNFG | 267.6 | PENDLETON - CAMP ATIS (Voice only - UHF Radiobeacon NFG decommissioned) |
| MN | JAY | 108.2 | AUSTIN - VOR - delete AWOS |
| NY | GEE | 108.2 | GENESEO - VOR - delete ROCHESTER ATIS |
| NY | ROC | 110.0 | ROCHESTER - VOR - delete ATIS |

DELETIONS

| | | | |
|----|------|-------|--|
| LA | KMSY | 126.7 | NEW ORLEANS - MOISANT ATIS (still on 127.55) |
|----|------|-------|--|

LOGGINGS...

HANK HOLBROOK - 407 ARUNDEL RD - FAIR HAVEN CLIFFS - DUNKIRK MD - 20754

Rcvr: Sony AIR-8 Ant: ANT-8 whip

+ = initial CQ on 156.8

AUGUST 1993 (EDT) (ADDITIONAL LOGS)

| | | | | |
|------------|-----------------|---------|-----------------------|-------------------------------|
| 26 TR 0537 | <u>WAA-4174</u> | 156.65 | DE near DELAWARE CITY | SHIP Constitution |
| 27 TR 0755 | <u>S6GY</u> | 156.4 + | NY near AMBROSE LT | <u>200</u> SHIP Neptune Pearl |

The Aug 31 - 0742 EDT tentative reception of an USCG Jones Beach, NY on 157.1 / 156.8 (in the Nov VUD) has been verified as such. Call: NMY-54. Location: Freeport, NY.

WILLIAM R. HEPBURN - 35 LOCKWOOD RD - BRAMPTON ON - 16Y 4TV

Rcvr: Realistic PRO-2004 Ant: Attic verticle dipole

AUGUST 1993 (EDT)

| | | | | |
|------------|-----------------|--------|--------------------|---|
| 26 TR 0101 | <u>VBC-5</u> | 161.65 | ON POINTE-AU-BARIL | 134 CMB Warton CG Rdo (relays VBC-2 161.775 Meaford) |
| | 0135 <u>YEE</u> | 112.8 | ON MIDLAND | 63 VOR |

DECEMBER 1993 (EST)

| | | | | |
|------------|---------------|---------|------------|-----------------------|
| 17 TR 0736 | <u>WXM-71</u> | 162.55 | WV BECKLEY | 403 WX |
| | 0739 WXM-72 | 162.425 | WV HINTON | 415 WX (// WXM-71) |

73s... *Bill*

QSL CORNER EXTRA

A CLASSIC RECEPTION VERIFICATION FROM THE PAST:

Courtesy Hank Holbrook, via Tom Yingling, Jr.

The Evening Star Broadcasting Company

4461 Connecticut Avenue, N. W., Washington 8, D. C.

RElegg 7100

June 21, 1955

WWAL - 630 K.C.
WWAL-FM - 107.3 M.C.
WWAL-TV - Channel 7

Mr. Henry S. Holbrook
E. Bowman Apartments
Bayshore Road R.D. #1
Cape May, New Jersey

Dear Mr. Holbrook:

I am pleased to acknowledge your letter of June 16 in which you refer to broadcast of Television Station ~~KQZXXK~~. We are presently renting our transmitter facilities to Zenith Radio of Chicago in order that they may conduct some Phonovision tests for the benefit of the FCC and Congressional personalities. These tests will continue through June 24. Your logging of our procedure in connection with these tests is very accurate.

Sometime in the early fall we expect to increase our TV power and if at that time you are still interested in logging distance stations, I would be glad to hear from you after we are on increased power.

Yours very truly,

A. T. Powley
A. T. Powley
Chief Engineer

