

Vhf-Uhf DIGEST

The Official Publication of the Worldwide TV-FM DX Association

JUNE 1998

- ▶ DX SEASON IS WELL UNDERWAY!
- ▶ LATEST DETAILS ON CONVENTION '98
- ▶ "PHANTOM" TRANSLATORS EXPLAINED
- ▶ REMEMBERING WHEN TV CAME TO CALGARY
- ▶ SPRING BRINGS SOME GREAT TROPO DX
- ▶ MANY TV AND FM STATION CHANGES
- ▶ THE NEW, IMPROVED QSL/LOGO COLUMN
- ▶ CHOOSING THE RIGHT COAX FOR UHF
- ▶ MIKE CONDON'S AMAZING 160-FOOT TOWER



WORLDWIDE TV-FM DX ASSOCIATION
PO BOX 501 - SOMERSVILLE, CT 06072



OPINIONS EXPRESSED IN THIS PUBLICATION ARE THOSE OF THE INDIVIDUAL CONTRIBUTOR AND DO NOT NECESSARILY REFLECT THE VIEWS OF THE PUBLISHER OR BOARD OF DIRECTORS. WE RESERVE THE RIGHT TO EDIT MATERIAL TO MEET PUBLISHING STANDARDS. UNLESS PREVIOUSLY AGREED UPON IN WRITING, ALL MATERIAL SUBMITTED FOR PUBLICATION IN THE VHF-UHF DIGEST BECOMES THE PROPERTY OF W.I.F.D.A.

REPRODUCTION OF MATERIAL FROM THE VHF-UHF DIGEST WITHOUT PERMISSION OF W.I.F.D.A. IS PROHIBITED. INDIVIDUALS AND OTHER ORGANIZATIONS ARE GRANTED SUCH PERMISSION PROVIDING PROPER CREDIT IS GIVEN TO THE SOURCE.

ANNUAL DUES: \$24/year: U.S. addresses

(payable in \$26/year* to Canada

U.S. funds) \$38/year* for airmail service to all other countries. (*Payable in U.S. funds)

first class mail

11/98
BILL NOLLMAN
24 A-1 LAKESHORE DR
FARMINGTON CT 06032

WORLDWIDE TV-FM DX ASSOCIATION

SERVING THE VHF-UHF DX ENTHUSIAST

THE VHF-UHF DIGEST IS THE OFFICIAL PUBLICATION OF THE WORLDWIDE TV-FM DX ASSOCIATION, DEDICATED TO THE OBSERVATION AND STUDY OF THE PROPAGATION OF LONG DISTANCE TELEVISION AND FM BROADCAST SIGNALS AT VHF AND UHF. W.T.F.D.A. IS GOVERNED BY A BOARD OF DIRECTORS: TOM BRYANT, GREG CONIGLIO, BRUCE HALL, DAVE JANOWIAK, AND BILL THOMPSON.

CIRCULATION: MIKE BUGAJ EDITOR/PUBLISHER: BILL THOMPSON
COMPTROLLER: DAVE JANOWIAK CONVENTION CO-ORDINATOR: TOM BRYANT

EDITORIAL STAFF: TOM BRYANT, GREG CONIGLIO, VICTOR FRANK, GEORGE W. JENSEN, JEFF KRUSZKA, RUSSELL MILLER, FRED NORDQUIST, MATT SITTEL, DOUG SMITH, JIM THOMAS, THOMAS J. YINGLING, JR., JOHN ZONDLO
ORIGINAL COVER DESIGN: HARRY HAYES BACK ISSUES: DAVE NIEMAN

FROM THE STAFF:

DX ALERT PROCEDURE: Any on-line DXer is urged to post an e-mail note with the amfntvdx@qth.net service as soon as possible after an opening has been detected. In addition, go to the IRC Net Chat Channel #WTFDXA. You may not find anyone there, but if you stay in the channel, someone experiencing the same opening is likely to join you. For both Es and Tr, this promises to be a means of getting instant information and ID help during openings. Don't forget, the scheduled DX Chats take place at 10 PM EDT every Tuesday and Friday.

NOT ON LINE? We are aware that many of our members are not 'on line' with a computer and some of them feel that there is too much "computer talk" in the VUD. The simple fact is that there are so many computer-related topics pertaining to DX that developments in that field get a lot of press. There is no questioning the worth of computer resources for DXers, and those who are not utilizing them are missing out on an invaluable source of information and help.

ON THE WEB: Thanks in large part to Fernando Garcia a lot of the mysteries of Mexican broadcasting have been unraveled. Now, to further assist, Mexico's equivalent of the FCC has opened a database at: <<<http://www.sct.gob.mx.infraestructura.html>>>. FM DXers are going to want to bookmark John Zondlo's site. There's a lot of information here, and plenty of links to get you to related areas of interest. To reach John's excellent resource pool go to <<<http://members.aol.com/fmdxweb>>>.

CONVENTIONS: WTFDA - Dave Nieman and Greg Coniglio co-host our convention July 31, August 1 and 2 at Rock City, New York (near Olean). Please check detailed publicity elsewhere in this issue.

IRCA - The International Radio Club of America gets together August 14-16 in Missoula, MT. For information contact Larry Godwin, 2390 Clydes Dale Lane, Missoula, MT 59804. E-mail address: <lbg@selway.umt.edu>.

NRC - The National Radio Club convenes Labor Day weekend in San Antonio. For information contact John Bowker, 1811 Ft. Dusquena Drive, Sun City Center, FL 33573 or e-mail <wa2wen@juno.com>.

23's Hank! All of us in WTFDA join in remembering Hank Holbrook, a 'DXer's DXer'. Bill Harms, a fellow DXer who knew Hank, had this to say: "I am sad to hear about the passing of Hank, indeed a great legend of the radio. Over the years, I spent many hours with him discussing QSLing and the radio. In my last conversation with him about one month ago, he told me he had verified over 16,000 separate radio stations. If you ever talked to him, you would know as I know that his enthusiasm for the hobby was contagious. I will miss him. My deepest condolences to his family." Hank's WTFDA friends share those sentiments.

WTFDA MAILBOX

Worldwide TV-FM DX Association
P.O. Box 501, Somersville, CT 06072

NEW MEMBERS!

James Ivill, Colliers, WV
Edward Houchins, Emden, IL
Ken Englert, Los Angeles, CA

And now we find out who had at least \$24 in their checking account to renew this month: Paul Mitschler, Harry Hayes, Dan Oetting, Frank Merrill, Steven Cornell, William Wyllie, Roger Labeledz, Timothy Clampett, William Thompson, Philip Sullivan, Frank Drobny, Richard Steinberger, Ernie Cooper, Gus Mancuso, Lawrence Weisberg, Albert Gordon, Eric Fader, David Cox, John Hourigan, James Gill, Ray Leko, Ron LeBlanc, Owen Wood, Michael Parks, Robert Fischer, Rich Wertman, Fred Nordquist, Bob Seybold, and and a rejoin from Ulrich Onken in Lorrach, Germany. Glad to have everyone back!

DOES YOUR FAMILY UNDERSTAND DXING?

A reply from Jim Ayers of GA about growing up as a DXer. Jim's father was a ham operator who worked South America often providing phone patches between missionaries and their US families. But he never understood propagation and didn't believe that Jim picked up Albuquerque-5 in MS via Eskip. Jim's dad was certain that some closer station was running the channel 5 test pattern instead. He never understood Jim's fascination with dx (join the club Jim-mb). When Jim was in college his next door neighbor called him and blamed him for the interference on her TV...which turned out to be Es. Jim had a tall tower in his yard and she thought he was transmitting the scratchy lines. So, he explained Es to her and she hung up and never mentioned it to him again (so she decided you were a nut..mb). And Jim speaks of his sister: "when it came to my sister, she simply wrote off my dxing to the fact that one simply cannot receive signals from outside the city where I live. End of story. Years later, as a cross country truck driver...she has admitted to me that she listens to KFI as far east as Texas (excuse me, but isn't that DX? mb). I wonder if she ever remembers telling me 20+ years ago that you just can't receive distant signals. " You know, I don't know why more truckers aren't into dxing...do you?

INTERESTED IN DIGITAL?

If you're a person who is seriously looking for digital tv resources, do we have the web sites for you: Try www.analog2digital.com, www.intris.com and www.anvil-media.com. These are technical sites and are not for the faint-hearted. Tech types- check them out.

DIGITAL SIGNALS ON AN ANALOG TV?

Can it be done? Sorta. From Karl Zuk: Regarding dtv you need to use an old fashioned tuneable tv. TVs with digital tuners search for an NTSC waveform and will fly right past a dtv signal. When "seeing" a dtv signal, you will notice a slightly different pattern of snow, but when compared to adjacent (and also empty) channels, you'll definitely notice the difference. I can see the new WCBS-HD on channel 33 about 35 miles away from the xmtr site with just a bow-tie on a black and white Radio Shack TV with a click tuner. And Karl stresses that you absolutely must use an older TV with an analog tuner and no AFT. Now...let's go watch some snow. Watching it is better than shoveling it.

TV AND FM IN EUROPE

This is from Uli Onken in Germany: During the last years, a lot of commercial stations have popped up in many European countries after legislation has permitted non-government or non-public radios. Although these stations are new DX targets, they have made DXing from many locations increasingly difficult, since they have occupied almost every spot on the dial (in other words, just like here...mb).

Most of the FM stations, especially the big networks, are now using the RDS (Radio Data System), providing station ID, alternative network freqs and dynamic programming info on a 57 khz subcarrier. RDS is a useful tool for DXing since it makes IDs of unknown signals much easier and faster.

In Eastern Europe, FM stations in most countries (except Russia) have changed from the OIRT band (65-73 mhz) to the CCIR band (87.5-108 mhz). TV stations that formerly operated around 100mhz have been shifted to UHF channels.

The terrestrial TV networks have seen only minor changes. More and more stations are now using Astra or Eutelsat satellites, which is much cheaper than operating large terrestrial networks. But so far, the terrestrial networks seem to be unaffected, except for a few rumors that low-band VHF TV transmitters (such as in Norway) are going to be closed.

In Amateur Radio, a number of countries, including the UK, France, Spain, Portugal, Germany, Austria and the Scandinavian countries have permitted operation on the 50mhz band, except in areas with TV stations on 50 mhz. Expect a lot more activity in this band during the coming solar activity cycle and watch out for European stations on the North American east coast during winter when the F2 layer of the ionosphere might be open.

Mike Bugaj - ikon@netcom.com

Remember the **WTFDA** on the internet!

On internet irc- channel #wtdxa on IRCNET Tue/Fri 10pm Eastern
Check the FCC databases at: www.fcc.gov/oet/info/database/fadb.html

FM NEWS

JUNE 1998

Many of the items listed in this column are taken from the publication:
M Street Journal - P.O. Box 1479 - Madison, TN 37116-1479
PHONE (615) 865-1525 FAX (615) 865-2598

editor- GREG CONIGLIO

90 SLATE CREEK DRIVE - APT. 3
CHEEKTOWAGA, NEW YORK 14227

E-MAIL coniglio@localnet.com

TIP DEADLINE - The 10th

<p>KEY: &: satellite programming AF: new freq. allocation accepted for filing for a new FM license AFA: American Family Association CC: call change/new calls assigned CL: city of license change granted CO: new xmtr co-ordinates CX: a CP has expired, and is cancelled C1,C2, etc: change in class status DA: directional antenna DE: calls deleted, license returned to FCC FC: station format change</p>	<p>GA: granted amendment to table of FM allocations GE: station was granted extension of a CP GX: granted replacement of expired CP LC: filed for license to cover (for new stn.) MC: multiple-city legal ID NC: no change yet, on a reported pending grant/change. ND: non-directional NO: station is not on the air NS: a new station granted a license OSA: one-step application NW: new station signs on the air PA: proposed amendment to change table of allocations PC>: a power change (increase)</p>	<p>PC<: a power change (decrease) PG>: power change granted (increase) PG<: power change granted (decrease) QC: frequency change for this station QG: frequency change granted RA: station returns to the air RE: station requests extension of a CP RX: station requests re-instatement of an expired CP SG: slogan change or update SI: station is silent XA: dismissed amendment to the table of FM allocations XC: station changes xmtr site XG: station granted a transmitter (xmtr) site change</p>
---	--	--



UNITED STATES

ALABAMA:

Alexander City: WSTH 106.1 adds CD Country (&)
Auburn: WKKR 97.7 PC> 3.1 kW, 453 ft.
XC: 32-33-54 / 85-22-13
Birmingham: WLJR88.5 NW, religion
Brundidge: WTFB 94.7 LC
Dadeville: WZLM 97.3 PG< 1 kW, 561 ft.
E. Brewton: WGCX 95.7 NO-GE
Headland: WBCD105.3 FC to CHR "Z-105"
Luverne: WMHS104.3 FC to oldies (Montgomery)
Monroeville: *NS 88.9 AF (AFA)
Pine Hill: *NS 96.7 NO-GE
Prattville: WAFX 95.1 dec. to 476 feet
XG: 32-27-58 / 86-24-25
St. Florian: *** 102.7 GA: add class A
Selma: *NS 105.3 AF
Smiths: *NS 101.3 6 kW, 328 ft.
Thomaston: WAYI97.7 CC (NS)
Wetumpka: WJWZ 97.9 CC (ex WICE), NW, urban (Montgomery) "97 Jamz"

ALASKA:

Anchorage: KMXS103.1 PA: from class C2 to C1
Anchorage: *NS 93.7 AF
Anchorage: KFAT 92.9 extension denied (station has until 11/26/98), NW, sports // KAKX
Dillingham: K285EV104.9 NS-249w(h): KAKN 100.9
Girdwood: *NS 88.9 AF

MIX 103.1

KMXS

Alaska:

Houston: KBDV 88.7 NO-GE, CC (NS)
Kasilof: *NS 91.5 AF
Ketchikan: K201EG88.1 NS-50w: KLVC 88.3 CA
Ketchikan: KFMJ 99.9 LC
Nikiski: *NS 93.3 AF
Sterling: *** 102.5 PA: add class C2
Tok: K216DT91.1 NS-187w(v): KUAC 103.9
Wasilla: *** 100.9 add class C2 (replaces PA for 102.5 - C2)

ARIZONA:

Chino Valley: KAKP103.9 NO-GE
Clifton: KWRQ102.1 dec. to 2211 ft.
XG: 32-53-23 / 109-19-26
Gilbert: KPTY 103.9 PC> 11 kW, 492 ft.
Glendale: KKFR 92.3 NC to 1640', XC, GE
Kingman: KGMN 99.9 GA: to 100.1 - C2
L. Havasu City: *NS96.7 AF
Marana: KOHT 98.3 PC> 6 kW, 184 ft
XG: 32-27-09 / 111-05-11
Munds Park: *** 106.1 PA: add class A
Oracle: KIXD 106.3 FC to country "Kix 106" (Tucson) CC (ex KLQB)
Oraibi: KBDT 98.9 100 kW, 1968 ft., CC (NS)
Oro Valley: KOAZ97.5 NC to 6 kW, 1154', GE
Page: KNAD 91.7 NO-GE
Scottsdale: KSLX 100.7 will carry the Arizona Cardinals NFL Football games
Springerville: KQAZ101.7 PC> 7.5 kW, 1233'
XC: 34-15-06 / 109-35-06, now C2
Sun City: KEDJ 106.3 NC to 23 kW, 725', RE
Tempe: K220GO91.9 NS-11w: KAWZ 88.9 ID
Wellton: *NS 104.5 AF

ARKANSAS:

Ashdown: KARQ 92.1 GA: to 93.3 - C3
Atkins: *NS 99.3 AF
Camden: KAMD 97.1 noted off the air
Cherokee Village: KFCM 100.9 OSA to 98.3 - C3, PC> 25 kW, 305 ft.
DeQueen: KDQN 93.1 GA: to 92.1 - C2

Arkansas:

Des Arc: KBDO 91.7 CC (NS)
 El Dorado: *NS 101.5 AF
 El Dorado: K220DW91.9 on with WAFR 88.3
 Gould: KAFN 102.5 XG: 33-55-35 / 91-28-40
 Grambling: K214CE 90.7 on with KDAQ 89.9
 Hampton: KKOL 107.1 noted on this freq, not 106.5
 Harrisburg: *NS 95.9 AF
 Hatfield: *NS 104.1 AF
 Heber Sps: KAWW100.7 FC to CHR // KKYK 106.3
 Lakeview: *NS 93.5 AF
 Lonoke: KKYK 106.3 PC> 50 kW, 492 ft, C2
 XG: 34-36-06 / 91-51-40
 Malvern: KMKV 93.3 CC (ex KBOK)
 PA: to class A, CL: Bryant, AR
 Marion: KXHT 107.1 drops Ed & Dre
 PC< 2750w, 479ft, ND

Maumelle: KSIK 96.9 CC (NS)
 Monticello: KHBM 93.5 FC to JRN AC (&)
 Mtn Pine: K215CP90.9NS-10w: KLVN 93.3 CA
 Mena: *NS 105.3 AF
 N.Little Rock: KDRE101.1 FC to talk "The Mouth"
 Ola: KARV101.3 NW, CHR "Carve Radio"
 Oro Valley: KSJM 97.5 FC to smooth jazz (Tuscon)
 Shreveport: KDAQ89.9 SG "Red River Radio"

CALIFORNIA:

Angwin: KNDL 89.9 CC (ex KCDS)
 Arvin: KBDS 92.5 CC (NS)
 Camarillo: KOCP 95.9 PC> 1250w, 1440 ft
 XG: 34-20-55 / 119-20-13
 Chico: KLRS 92.7 FC to CHR
 Coalinga: *** 97.3 GA: add class A
 Desert Center: KZAL 105.5 RA with country
 Dunnigan: KLNA 105.5 adds Unica Span. talk (&)
 Earlimart: KNAC 93.5 NO-RE
 Edison: K208CY88.5 NS-10w: KLVN 93.3
 Felton: KHIP 93.7 NO-GE
 Fresno: KNAX 97.9 FC to classic country
 Fresno: KALZ 102.7 CC (ex KTHT) "Alice"
 Grover City: KQJZ 107.3 CC (ex KIXT), FC to
 smooth jazz (San Luis Obispo)
 Hanford: KGEN 94.5 inc. to 446 ft.
 XG: 36-12-16 / 119-33-53
 Hydenville: *NS 94.1 AF
 Indio: KCRY 89.3 PG> 3.3 kW, 561 ft
 XG: 33-48-07 / 116-13-28
 Indio: KKKU 92.7 CC (ex KCMJ)
 Indian Wells: *** 95.5 PA: adds class A
 Johannesburg: KRAJ 103.9 dec. to 1309 ft
 XG: 35-28-41 / 117-41-58
 Johannesburg: *NS100.9 AF
 Kerman: *NS 95.3 AF
 Kernville: K240CQ95.9 NS-10w(v): KFRB 91.3
 Lancaster: KTLW 88.9 LC
 Linsday: KZPO103.3 NW, adult standards
 Los Banos: K220GR91.9 NS-10w: KCZO
 Los Banos: K208DA89.5NS-10w: KMRO 90.3
 Los Molinos: KTHU102.1 CC (ex KAWF)
 Lucerne Valley: KIXA 106.5 PG> 560w, 1066'
 McFarland: *** 97.3 GA: add class A
 Magalia: KLVC 88.3 PC> 3.2 kW, 1378 ft, B
 Manteca: KFRY 96.7 PC< 1.5 kW, 466 ft.
 XG: 37-43-44 / 121-07-34
 6cca: *NS 97.7 670w, 571 ft.

California:

Menocino: KAKX 89.3 NW, variety
 Merced: *NS 94.1 AF
 Mtn Pass: KHYZ 99.5 GA: to 99.7 - B
 Orland: KRQR106.7 NC to 50 kW, 308 ft, DA
 XG: 39-53-16 / 122-37-38
 Pasadena: KROQ106.7 XC: 34-11-49 / 118-15-30
 Pismo Bch: KXTZ 95.3 FC to classic rock
 CC (ex KWBR) (S.Luis Obispo)
 Pleasanton: KBLX-2102.9 NS-185w(v)
 Pt.Reyes Str: *NS90.5 AF
 Prunedale: KLVM-89.7 NS-5 watts: KLVM
 Quincy: KSPY100.3 PC> 900w, -1125 ft.
 Ridgecrest: K217DA91.3 NS-10w: KCZO
 Roseville: KRAK 93.7 CC (ex KRXQ), FC to
 classic country (Sacramento)
 Sacramento: KRXQ98.5 CC (ex KRAK), FC
 to rock
 San Clemente: KWVE 107.9 NC to 560w, 3690', RX
 San Luis Obispo: KPAT 88.5 NO-GE
 San Rafael: KKHJ 100.7 PC> 6 kW, 328 ft
 XG: 37-58-49 / 122-31-39
 Santa Barbara: KLDZ 107.7 FC to oldies, not // AM
 Santa Cruz: KLSN 90.7 CC (NS)
 Santa Ynez: KRAZ105.9NO-GE
 Shafter: KGZO 90.9 PG< 1.9 kW, 2070', DA
 XG: 35-16-51 / 119-44-52
 Shingletown: *NS 96.1
 S.Lake Tahoe: KZZF102.9 FC to Hot AC (&)
 Tahoe City: KLCA 96.5 PC> 6.1 kW, 2962 ft
 XC: 39-18-38 / 119-53-01, FC to modern AC
 "Alice" (Reno), CC (ex KRZQ)
 Tehachapi: *NS 100.1 AF
 Ukiah: KPRA 89.5 PG> 1.6 kW
 W.Covina: KRTO 98.3 PG< 600w, 1004 ft
 XG: 34-09-17 / 117-48-02



COLORADO:

Aspen: KPWW 107.1 NO-RE
 Breckenridge: K207CK 89.3 NS-249w(v): KPRE 89.9
 Vail
 Burlington: K216DU91.1 NS-250w: KRCC 91.5
 Canon City: *NS 89.1 160w, 718 ft.
 Colorado Sps: KTLF90.5 NC to 13 kW(v), 2181', GE
 Cortez: KISZ 97.9 adds ABC country (&)
 Crested Butte: KBTU90.3 PG< 225w, -636 ft
 XG: 38-54-11 / 106-58-23
 Delta: *NS 103.3 AF
 Durango: KPTE 99.7 CC (ex KWXA)
 Estes Park: KRK102.1 NW, classic hits
 SG "K-Rocky"
 Ft.Collins: *NS 89.7 AF
 Grand Jct: *NS 100.7 4.8 kW, 1032 ft.
 Hayden: KBDU107.3 1550w, 643 ft CC (NS)
 Lamar: K202CQ88.3 NS-250w: KRCC 91.5
 Leadville: *NS 93.5 NW, oldies (&)

Colorado:

Loveland: *NS 89.7 AF
 Montrose: KAZS 88.3 CC (NS)
 Placerville: *NS 90.7 AF
 Silverton: *NS 103.7 AF
 Steamboat Sps: KBCR 96.9 PC> 10 kW (h), 666', C2
 Telluride: KRYD104.9 NW, smooth jazz (&)
 Vail: KPRE 89.9 dec. to 295 ft.
 XG: 39-38-05 / 106-26-47
 Vail: KSKE 104.7 dec. to 335 ft.
 XG: 39-38-05 / 106-26-47

CONNECTICUT:

Danbury: WDAQ 98.3 PG< 850w, 551 ft.
 Hampden: WKCI 101.3 PC> 15 kW, 876 ft.
 Storrs: WHUS 91.7 NC to 4.4 kW (v), 1028w
 (h), 492ft, GE

DELAWARE:

Ocean View: WRBG101.7 RA w/ clas. hits "Big"
 adds Bob & Tom, Don & Mike CC (ex WRKE)
 Seaford: WGBG 98.3 FC to clas. hits // WRKE
 adds Bob & Tom, Don & Mike (Salisbury)

DISTRICT OF COLUMBIA:

Washington: WCSP90.1 NC to 36 kW, 567', GE

FLORIDA:

Apalachicola: WXGJ 105.5 LC, OSA to C2, 50 kW, 315'
 Carabelle: WOCY106.5 CC (ex WCAF)
 Crawfordville: WAKU94.1 FC to Jones hot AC (&)
 Crystal Rvr: WAQV90.9 NO-GE
 Ft.Meade: WWRZ98.3 CL change from
 Arcadia, FL, upgraded for strong Tampa signal
 Ft.Myers Beach: WJBX 99.3 FC to new rock "The X"
 Green Cove Sps: WJBT 92.7 drops Ed & Dre
 Holly Hill: WANX 88.1 NO-GE
 Holmes Bch: WISP98.7 OSA to C2, 50 kW, 489'
 XG: 27-50-33 / 82-48-52, they've been reported
 to have already upgraded, moved to the
 WXUU 92.5 tower, and PC> 50 kW
 Horseshoe Bch: ***95.9 PA: add class C3
 Inverness: WJUF 90.1 PG> 21 kW, C2
 Key West: WCNK 98.7 no XC yet, GE
 Kissimmee: WWKQ89.1LC
 LaCrosse: *NS 99.5 AF
 Live Oak: WLVO106.1 NO-RE
 Melbourne: WCIF 106.3 XG: 28-08-15 / 80-42-11
 PC> 11 kW, 489 ft, C3
 Melbourne: WBVD 95.1 NC to 253', GE
 Murdock: *NS 98.9 AF
 Nocatee: *NS 105.3 AF
 Panama City: WJTF 89.9 NO-RE
 Pensacola: WTKX101.5 inc. to 1328 ft, C3
 XG: 30-35-18 / 87-33-16
 Perry: *** 93.5 GA: add class A
 Ponte Vedra Beach: WBGB 106.5 CC (ex WTLK)
 SG "Big 106.5"
 Punta Rassa: WWWW 97.7 OSA to C3, 14.5 kW, 430'
 DA
 Tallahassee: WGLF104.1 FC to classic rock
 Tavemier: WIFL 96.9 OSA to 25 kW, C3, 157'
 Tice: WAAD 93.7 NO-GE
 W.Palm Bch: WRLX92.1PC< 4.1 kW, 351',
 XG: 26-45-33 / 80-08-40
 Yankeetown: WAZN96.3 2,750w, 489 ft. CC (NS)

GEORGIA:

Ashburn: WFFM105.7 FC to urban
 Atlanta: WKLS 96.1 drops John Boy & Billy
 Blackshear: WKUB105.1 OSA to C2, 50 kW, 328 ft
 XG: 31-10-54 / 82-22-49
 Blue Ridge: WPPL103.9 drops southern Gospel
 now contemporary Gospel only
 Brunswick: WAYR 90.7 reported SI CC (ex WAQC)
 SG "Way Radio"
 Dahlongega: WNGU 89.5 NO-GE
 Darien: WYNR107.7 NC to 482 ft, GE
 Elberton: WEHR105.1 CC (ex WDDA)
 Fayetteville: WHTA97.5 NC to 6.6 kW, 636', RE
 Homerville: WBTY105.5 NO-GX
 Lumber City: WMOC88.7 LC
 Mt.Vernon: *NS 101.7 AF
 Pearson: WPNG101.9 NO-GE
 Pt.Wentworth: WAYH91.9 CC (NS)
 Ringgold: WMPZ 93.7 PG> 4.9 kW, 302 ft.
 XG: 34-53-46 / 85-10-18
 Rome: W220CB 91.9 NS-10w(v): WPCS 89.5 FL
 Savannah: WZAT 102.1 FC to CHR
 Statesboro: WPMX102.9 adds Jones clas. rock (&)
 Sylvania: WZBX106.5 adds Daybreak USA
 Sylvester: WRXZ106.1 FC to urban // WFFM (Alb.)
 Talking Rock: WCHK 100.1 CC (NS)
 Valdosta: WWRQ107.7 QG to 107.9, 14 kW, 315 ft
 XG: 30-50-11 / 83-17-56

HAWAII:

Hanalei: KKCR 90.9 LC
 Honolulu: *NS 105.9 NO-RE
 Lihue-Kauai: KAWV98.1 NO-RX

IDAHO:

Bonnars Ferry: *NS92.1 740w, 2748 ft.
 Bonners Ferry: K247AJ 97.3NS-1w: KEYF 101.1 WA
 Caldwell: KARO103.3 adds Bob & Tom (Boise)
 Coeur D'Alene: *NS102.3 AF
 Eagle: KXLT 107.9 adds Delilah (Boise)
 Garden City: KCIX105.9 FC to hot AC (Boise)
 Idaho Falls: K220GN91.9NS-41w: KLOV
 Lewiston: *NS 105.1 AF
 McCall: KDZY 98.3 100 kW, -259 ft., CC (NS)
 Salmon: *** 94.5 PA: add class A
 Twin Falls: KEFX 88.9 PG> 7.4 kW, 994 ft, C2
 XG: 42-43-48 / 114-24-52

ILLINOIS:

Atlanta: *NS 96.3 AF
 Aurora: WKKD 95.9 adds JRN oldies (&)
 Canton: *NS 101.1 NO-GE
 Carlinville: WTSG 90.1 LC
 Carlinville: WIBI 91.1 PG> 50 kW (cir), 476', DA
 Carlyle: WCXO 96.7 NO-RE
 Carthage: *NS 93.9 AF
 Colfax: WAPU 92.9 NW, a/c (&) (Bloomington)
 E.Moline: KUUL101.3 CC (ex WLLR), FC to oldies



Illinois:

Eureka: WEEK 98.5 FC to adult contemporary
 Freeport: WNIE 89.1 PG> 6 kW, 361 ft, DA
 B1, XG: 42-18-45 / 89-35-38
 Geneseo: KQLI 104.9PG> 12.5 kW, 469 ft, class C3
 XG: 41-43-11 / 90-34-13, CL: DeWitt, Iowa
 CC (ex WGEN), FC to soft AC "Light FM"
 Jacksonville: W201BL 88.1 NS-55w: WYFG 89.3 SC
 Jerseyville: WALC104.1 adds Howard Stern
 Knoxville: *NS 105.3 AF
 Loves Park: WLUV96.7 PG> 5 kW, 161 ft.
 Mt. Vernon: WBMV 89.7 LC
 Oregon: WOXM106.1 NO-RE
 Pekin: WCIC 91.5 NC to 50 kW (cir),GX
 Pickneyville: WCCZ104.3 NO-RE
 Ramsey: WJLY 93.3 PC< 2550w, 505 ft.
 Seneca: WJDK 95.7 CC (ex WJEK)
 Sterling: WNIQ 91.5 PG to 2.4 kW, 328 ft
 XG: 41-53-52 / 89-36-20
 Tower Hill: WRAN 98.3 NW, talk "Ran Radio"
 Virginia: WVIL 101.3 NW, country
 Wilmington: WYKT105.5 FC to new rock

INDIANA:

Auburn: WGL 102.3FC to sports & talk // WGL-AM
 Bedford: WQRK105.5 FC to ABC oldies (&)
 Charlestown: WLWX104.3 LC
 Evansville: WYNG105.3 inc. to 492 ft,
 XG: 38-04-45 / 87-36-36
 Indianapolis: WFBO94.7 NC to 58 kW, 804', RE
 Lebanon: WWRE91.1 300w, 108 ft., CC (NS)
 Michigan City: *NS88.5 AF
 Notre Dame: WSND88.9XG: 41-36-19 / 86-12-45
 Roann: *NS 101.9 AF
 Peru: WARU 98.3 OSA to 98.5 - 6 kW (cir)
 Portland: WBSJ 91.7 LC
 Richmond: WFMG101.3 adds Radio 1 Hot AC (&)
 South Bend: WNDU92.9 XG: 41-36-19 / 86-12-46
 Valparaiso: *NS 91.1 AF
 Vincennes: WATI 89.9 NO-RE
 Winamac: WFRI 100.1 NW, c. Christian // WFRN

IOWA:

Ankeny: KMXD106.3 OCA to C3, 18 kW
 Alta: KBVU 97.5 NW, Jones modern rock (&)
 Creston: KSIB 101.3 CC (ex KITR)
 Davenport: WLLR103.7 CC (ex KUUL), FC to country
 Keokuk: KRNQ 96.3 NO-GE
 Keokuk: KOKX 95.3 NC to 100 kW, 794', GE
 Madrid: KLRX 96.1 LC
 Mason City: *NS 88.5 3 kW (v), 320 ft (AFA)
 New London: *NS 97.3 AF
 Patterson: *** 105.9 GA: add class A
 Sioux City: K205DC88.9 NS-50w: KLVC 88.3 CA



KANSAS:

Arkansas City: KLPQ 102.5 NO-RE
 Dearing: *NS 98.1 AF
 Dodge City: KONQ 91.9NC to 223ft, XC, GX
 Dodge City: KRPH93.9 inc. to 807 ft.
 El Dorado: KBTL 88.1 CC (NS)
 Elwood: *NS 89.7 AF
 Galena: *NS 104.3 AF
 Great Bend: *NS 89.7 250 w, 112 ft (AFA)
 Hays: KJLS 103.3 OSA to class C, 994 ft
 XG: 39-01-15 / 99-28-12
 Hill City: KKQY101.9 PG 97 kW, 981 ft.
 Hutchinson: *NS 97.1 AF
 Ingalls: *NS 96.3 AF
 Ingalls: *NS 105.9 AF
 Iola: KIKS 99.3 PC< 340w, 30 ft
 XC: 37-53-53 / 95-24-32
 Kingman: KCVW 94.3 LC
 Larned: *NS 106.9 100 kW, 485 ft.
 Manhattan: K214CZ90.7NS-140w(v): WPCS 89.5 FL
 Oberlin: K217CY91.3 NS-250w: WAFR 88.3 MS
 Ottawa: KRBW 90.5 LC
 Ottawa: KCHZ 95.7 PG> 100 kW, 981 ft, DA
 XG: 39-00-45 / 95-01-46
 Plainville: KFIX 96.7 returned RE, unnecessary.
 Topeka: KWIC 99.3 FC to ABC - hot AC (&)
 Wellington: KWME 93.5 PC> 6 kW, 321 ft.
 Winfield: *NS 91.9 250w, 390 ft. (AFA)



KENTUCKY:

Beaver Dam: WAUE 100.7 NO-GE
 Benton: *NS 88.1 600w(v), 253 ft.
 Berea: WKXO106.7 FC to adult contemp.
 Campton: *NS 103.7 AF
 Danville: WHIR 107.1 PG> 6 kW, 328 ft
 XG: 37-45-35 / 84-44-35
 Inez: W202BH88.3 NS-13w: WMKY 90.3
 Jackson: WBJJ 104.5 NO-RX
 Louisville: WFPK 91.9 NC to 6.8 kW, 774 ft, GE
 Midway: WAHY107.9 NO-GE, PG> 6 kW
 Munfordville: WMCC102.3 reported SI
 Paducah: WDDJ 96.9 inc. to 777 ft.
 XC: 37-02-56 / 88-36-52

LOUISIANA:

Alexandria: *NS 106.9 AF
 Alexandria: KOUZ 89.9 NO-RE
 Ball: *NS 105.5 AF
 Basile: KQIS 102.1 PG> 76 kW, 1171 ft.
 XG: 30-02-19 / 92-22-15
 Benton: KLKL 92.1 PG> 6 kW, 321 ft
 XG: 32-39-19 / 93-41-36
 Bunkie: *NS 89.5 AF (AFA)
 Clayton: KFGA107.9 NO-GE
 Erath: KPFL 107.7 QG to 107.9, PG> 81 kW
 863 ft, non-dir
 Franklin: KFMV105.5 FC to black gospel and
 urban // KJCB
 Galliano: WTIW 94.3 PC> 100 kW, 981 ft, DA
 XC: 29-33-45 / 89-49-46

Louisiana:

Gibsland: KBEF 104.5 3 kW, 328 ft., CC (NS)
 Homer: KZXB 106.7 NW, Real Country (&)
 Lafayette: KTDY 99.9 XC: 30-12-06 / 91-46-37
 Mamou: KBON101.1 NC to 25 kW, C3, RX
 Marksville: KAPB 97.7 PC> 6 kW
 Minden: KSYR 95.7 QC from 95.3, now C2
 PC> 50 kW, 469 ft, DA, XC: 32-33-16 / 93-31-47
 Natchitoches: KZBL 95.9 OSA to 100.7 - C3, 25 kW
 246', XG: 31-48-17 / 73-01-27
 New Iberia: KXKC 99.1 XG: 30-12-06 / 91-46-37
 Ruston: KBDJ 99.5 6 kW, 328 ft, DA, CC (NS)
 Shreveport: KBED102.9 44 kW, 525 ft. CC (NS)
 Slidell: WLTS105.3 granted CL: Slidell, LA
 Tallulah: KBYO104.5 NC to 24.5 kW, RE
 W.Monroe: KYEA 98.3 adds Doug Banks

MAINE:

Dennysville: WHRR102.9 SI
 Freeport: WMSJ 89.3 LC
 Islesboro: WAYD105.5 NO-GE, CC (NS)
 Lincoln: WHMX105.7 FC to cont. Christian (Bangor)
 Machias: *NS 101.1 AF
 York Ctr: WXHT 95.3 FC to modern rock (&)

MARYLAND:

Baltimore: WOCF104.3 PC< 38 kW, 469 ft
 XC: 39-25-46 / 76-27-00
 Berlin: WOCQ 103.9 PG> 6 kW
 Cambridge: WFBR 94.3 NO-RE, NC to 4.6 kW, GE
 Mtn Lake Park: WKHJ 98.9 PC> 1.5 kW, 663 ft.
 Oakland: W204BA88.7 NS-120w: WOTJ 90.7 NC
 Ocean City: WSDL90.7 NW,info/classical // WSCL
 Waldorf: WWZZ104.1 PC< 20 kW, 800 ft.



MASSACHUSETTS:

Brewster: *** 94.3 PA: add class A
 Fair Haven: WFHN107.1PG> 6 kW, 325 ft, DA
 XG: 41-37-43 / 71-00-24
 Great Barrington: W231AK 94.1 NS-35w: WBEC 105.5
 Harwichport: WYST93.5 CC (ex WJCO) "Star"
 Northampton: WHMP99.3 adds Jones rock alter.
 for use on weekend (&) (Springfield)
 Northampton: WEIB106.3 LC
 Truro: WCDJ102.3 NO-RE
 Worcester: WAAF107.3 PC> 20 kW, 784 ft
 XG: 42-18-10 / 71-53-51

MICHIGAN:

Albion: WUFN 96.7 dec. to 456 feet
 Bear Lake: WZTU100.1 RA with adult alternative
 Benton Harbor: *NS94.9 AF
 Beulah: WBVE 92.1 NW, country
 Frankenmuth: *NS93.7 AF
 Freeland: *NS 90.9 AF (AFA)
 Gladstone: WGKL105.5 CC (NS)
 Glen Arbor: WOZN 95.5 CC (ex WJZJ), FC to new
 rock // WYZN (Traverse City)
 Hancock: WMPL 93.5 CC (ex WZRK)

Michigan:

Honor: *NS 100.7 AF (noncomm)
 Lansing: WJIM 97.5 NC to 45 kW, 512 ft, GX
 Mackinaw City: WYZN 94.5 CC (ex WLJZ), FC to
 modern rock (NW Michigan) "The Zone"
 Marlette: WBGV 92.5 NO-RE
 Mio: WXZN 93.9 FC to modern rock // KLJZ
 Negaunee: WKQS101.9 LC
 Oscoda: WCMB 95.7 NO-RE
 Pentwater: WMOM103.1 NO-RE
 Pentwater: WWKR94.1 CC (ex WEWM) RC to
 JRN classic rock (&)
 Reed City: WDEE 97.3 NW, oldies
 Stevenson: WFON106.3 NO-GE
 Traverse City: WNMC 90.7 QC from 90.9, PC> 600w
 538 ft, XC: 44-46-36 / 85-41-02

MINNESOTA:

Babbitt: KAOD106.7 NO-GX
 Belview: *NS 105.9 AF
 Detroit Lakes: KFGX95.1 NW, rock (Fargo)
 Faribault: *NS 107.5 AF
 Granite Falls: KKRC93.9 FC to Jones oldies (&)
 Moorhead: KQWB 98.7 adds Bob & Tom (Fargo)
 Park Rapids: *NS 92.5 AF
 Rochester: KMSE 88.7 CC (NS)
 St.Charles: KLCX 107.7 NW, classic rock (Rochester)
 St.Joseph: *NS 99.9 AF
 Spring Valley: KVG0 104.3 PG> 10 kW, 512 ft, C3
 XG: 43-38-23 / 92-38-30
 Walker: *NS 101.9 AF

MISSISSIPPI:

Aberdeen: WWZQ105.3 PG> 27.5 kW, 672 ft
 XG: 34-10-28 / 88-27-36
 Bay Sps: WKWZ 94.3 CC (ex WIZK), FC to hot
 AC "KZ-94" (Laurel)
 Bruce: WCMR94.5 PG> 5.1 kW, 358 ft
 XG: 34-04-15 / 89-13-29
 DeKalb: *NS 105.7 AF
 Drew: WOHT 95.3 adds black gospel 7p-mid
 Hattiesburg: WXRR104.5 inc. to 981 ft, C1
 McComb: WAQL 90.5 NO-GE
 Macon: *** 100.5 GA: add class A
 Meridian: WTUX102.1 FC to CHR "Z-102"
 Meridian: W213AV90.5 NS-10w: KLVC 88.3
 New Albany: WRBO 103.5 CC (ex WWKZ)
 Prentiss: *NS 104.9 AF
 Saucier: WAOY 91.7 CL: Gulfport, MS
 Stonewall: *NS 106.9 AF

MISSOURI:

Ash Grove: KZRQ104.1 CC (ex KQMO) FC to
 rock "Channel Z" (Springfield)
 Birch Tree: KBMV107.1 CX CP for several power
 changes, station is now 15 kW, 328 ft.
 Boonville: *NS 93.1 AF
 Branson: KOZO 89.7 NO-GE
 Buffalo: KBFL 99.9 PC> 18 kW, 220 ft, C3
 XG: 37-31-14 / 93-06-14
 Cuba: KGNN 90.3 LC
 Farmington: *NS 88.9 AF
 Garden City: *NS105.3 AF
 Houston: KUNQ 99.3 RA with ABC country (&)
 Jeff City: *NS 104.1 AF

Missouri:

Kirkville: KTRM 88.7 NW, variety
 Lexington: KNRX107.3 CC (ex KCCX) "The X"
 Miner: *NS 107.1 AF
 Moberly: KCSX 97.3 CC (NS), PG> 3.6 kW
 426 ft, class A, XG: 37-22-49 / 90-04-49
 CL: Marble Hill, MO
 Otterville: *NS 107.7 6 kW, 328 ft.
 Owensville: KBDQ 95.3 CC (NS)
 Poplar Bluff: *NS 88.7 AF
 Scott City: *NS 93.9 AF
 Union: KLPW101.7 PG> 3.3 kW, 351 ft
 XG: 38-28-55 / 91-02-41
 Wheeling: KULH 105.9 inc. to 328 ft
 XG: 39-54-25 / 93-20-28

Super Hit Country
101.7
KLPW
 ALL TALK 1220 AM

MONTANA:

Billings: *NS 105.1 NO-GE
 Billings: KIDX 98.5 CC (ex KOOK)
 Bozeman: *** 95.9 PA: add non-commercial
 Browning: K216DS91.1 NS-10w(v): KGFC 88.9
 Conrad: KEIN 93.7 LC
 E.Helena: KHKR104.1 OSA to 3.1 kW, 643 ft, C1
 Ennis: *NS 98.7 NO-RE
 Hamilton: KBEB 98.1 CC (NS)
 Kalispell: KUKL 89.9 NO-GE
 Kalispell: KDBR106.3 NC to 60 kW, 2365', GE
 Missoula: KMZL 91.1 NO-GE
 Seeley Lake: K201EF 88.1 NS-4w(v): KGFC 88.9
 Sidney: KTHC 95.1 FC to ABC a/c (&)

NEBRASKA:

Blair: KISP 101.5 CX CP for 7.3 kW, 597 ft.
 Broken Bow: K210CB 89.9 NS-250w: KJLT 94.9
 Hastings: *NS 94.5 AF
 Hastings: *NS 91.7 AF (AFA)
 Hubbard: *NS 88.1 AF (AFA)
 Hubbard: KAYA 91.3 LC
 Kimball: *NS 100.1 NO-GE
 Lincoln: KZFX 101.9 CC (ex KGDE), FC to
 classic hits SG "The Fox"
 McCook: KSWN 93.9 NO-GX
 Plattsmouth: KOTD 106.9 PA: to 107.7 - A
 Valentine: K207CG89.3 NS-250w: WAFR 88.3 MS
 Wayne: KTCH104.9 PG> 25 kW, 302 ft, C3
 XG: 42-14-04 / 97-03-20

NEVADA:

Ely: *NS 96.7 100 kW, -30 ft.
 Eureka: K215CM90.9 NS-25w(h): KUNR 88.7
 Indian Sps: *** 102.3 GA: add class C
 Indian Sps: KPXC 99.3 GA: from A to C
 Moapa Vly: *NS 104.7 AF
 Sparks: KRZQ100.9 CC (ex KLCA), FC to rock
 Sun Valley: KANG 93.7 NO-GE
 Sun Valley: *NS 94.5 AF

NEW HAMPSHIRE:

Farmington: *NS 106.5 AF
 Manchester: WGR101.1 will be // WHEB 100.3 for
 morning show "Morning Buzz"

NEW JERSEY:

Atlantic City: WZZP107.3 NW, CHR "Fun 107"
 Belvidere: WRNJ107.1 FC to country // WWWX 107.1
 E. Orange: WFMU 91.1 PG< 1250w, 495 ft.
 XG: 49-47-19 / 74-15-20

Long Branch: WWZY107.1 PC> 4.7 kW, DA
 Manahawkin: WJRZ100.1 adds Jones AC (&)
 Manahawkin: WNJM89.9 NO-GE
 Villas: WWZK 98.7 CC (ex WFNN) "K-Rock"

NEW MEXICO:

Albuquerque: K216DV91.1 NS-10w: KCZO
 Bosque Farms: KEXT 104.7 NC to 843', XC, RE
 Carlsbad: *NS 106.1 AF
 Espanola: KYBR 92.9 PC> 9.1 kW, 538 ft, DA
 class C3, XC: 36-09-07 / 106-02-21
 Gallup: KFMQ106.1 FC to regional Mexican (&)
 Gallup: *NS 101.5 OSA to C1, 55 kW, 1250 ft.
 Grants: *NS 105.5 AF (noncomm)
 Kirtland: KAZX 102.9 CC (NS)
 La Luz: KPXA 92.7 PC> 6 kW
 Las Cruces: K207CJ 89.3 NS-10w: KAWZ 88.9 ID
 Las Cruces: KRUC88.9 NW, Spanish religion
 Las Vegas: *** 102.9 PA: add class A
 Las Vegas: *** 92.7 PA: add class A
 Las Vegas: *** 101.5 PA: add class A
 Placitas: K220GM91.9 NS-10w: KLVN 93.3 CA
 Roswell: K212EW90.3 NS-250w(v): KAWZ 88.9 ID
 Taos: KHYF 99.9 NO-RE
 Thoreau: KXTC 99.9 FC to classic country (&)

NEW YORK:

Albion: *NS 95.5 AF
 Boonville: WBRV101.3 FC to country
 Briarcliff Manor: WWXY 107.1 PG> 1.9 kW, DA
 Brighton: WZNE 94.1 CX CP for 3.1 kW, 328 ft.
 Canandaigua: WISY102.3 CC(ex WMHX) "Sunny 107"
 Cape Vincent: WMHI 94.7 PG< 5.8 kW, 331 ft,
 XG: 44-04-42 / 76-15-26
 DeRuyter: WVOA105.1 PA: to CL: Chittenango, NY
 Hague: *** 93.7 PA: to C3 - Addison, VT
 Hampton Bays: WWVY 107.1 PG> 6 kW, DA
 XG: 40-52-10 / 72-34-37
 Honeyoye Falls: WMAX 107.3 CC (ex WRCD)
 Irondequoit: WYSY106.7 CC (ex WMAX) "Sunny 107"
 Jewett: *NS 97.9 AF
 Johnstown: WIZD104.9 PA: to CL: Altamont, NY - A
 PC> 6 kW, 298 ft.
 Melrose Park: W251AJ 98.1 NS-18w: WNYR 98.5
 Middletown: W201BV 88.1 NS-55w(v): WPCS 89.5
 New York: WBL107.5 adds Doug Banks
 New York: WBIX 105.1 CC (ex WNSR) "Big 105.1"

WBL 107.5 fm

New York:

Norwood: *NS 96.1 6 kW, 328 ft, DA
 Ogdensburg: WZEA98.7 LC
 Old Forge: *NS 94.1 6 kW, -30 ft.
 Old Forge: *** 92.5 PA: add class A
 Ossining: WOSS 91.1 SI
 Plattsburgh: W206AQ 89.1 NS-99w: KLOV
 Roanoke: WXXP105.3 NW, dance (Riverside)
 CC (NS)
 Rochester: WIRQ104.7 QC from 94.3, PC< 66 w
 Sylvan Bch: *NS 100.3 AF
 Syracuse: WRVD 90.3 NO-GE
 Utica: W201BS88.1 NS-10w(v): WPCS 89.5 FL
 Walton: WDLA 92.1 XA: to 97.5 - A
 Watertown: WCIZ 93.5 OSA to 93.3, 6 kW,
 XG: 43-57-23 / 75-50-45
 Westport: WMEX102.5 FC to classic hits

NORTH CAROLINA:

Asheboro: WWMO 89.5 NO-GE
 Burgaw: WKXB 99.9 NC to 774', XC, RE
 Danbury: W219BY91.7 NS-13w: WBFJ 89.3
 Durham: WXDU 88.7 PG>2150w, 253 ft, DA
 Elizabeth City: *NS 88.3 AF
 Enfield: *** 107.3 PA: add class A
 Fuquay-Varina: WNNL 103.9 CC (ex WZZU)
 SG "The Light"
 Hickory: W206AP88.1 NS-55w: WLFJ 89.3 SC
 Lumberton: WFNC102.3 FC to talk // WFNC-AM
 CC (ex WJSK)
 Manteo: W215AU90.9 NS-250w: WUNC 91.5
 Murfreesboro: WSAZ 98.3 CC (ex WDLZ), FC
 to country // WSAY 98.5
 Norlina: *NS 94.3 AF
 Raleigh: WCPE 89.7 NC to 1187', DA, class C, GE
 Raleigh: W255AM98.9 NS-10w: WBFJ 89.3
 Rocky Mt: WRSV92.1 PG> 2350w, 531 ft
 XG: 35-48-40 / 77-44-33
 Shallotte: WAZO 98.3 CC (NS)
 Snow Hill: WAGO 88.7 NO-RE
 Wake Forest: W237BA 95.3 NS-10w: WBFJ 89.3
 Warrenton: WXNC107.3 PA: to Powhatan, VA - C2
 Waynesville: WQNS 104.9 FC to classic rock (&)

89.7 WCPE *Now 100,000 Watts*
 From an Essential Music 24 Hours A Day

NORTH DAKOTA:

Arthur: KOCL 96.7 CC (ex KCQV) "Cool 96.7"
 Bismarck: KACL 98.7 LC
 Cavalier: KAOC105.1 NO-GE
 Fargo: KFBN 88.7 NW, religion
 Harwood: *NS 100.7 AF
 Rugby: KVAG 95.3 NO-RE
 Walhalla: KAUJ 106.7 PG< 16 kW, 836 ft
 XG: 48-38-38 / 97-58-46

OHIO:

Bellevue: WNR 92.1 PC> 3.7 kW, 108 ft
 XC: 41-16-26 / 82-50-25
 Cambridge: W233AL94.5 NS-?? w: WMBP 91.7
 Canton: WHK 98.1 PG< 15.5 kW, 879 ft.
 Cleveland: WRUW91.1 PG> 15 kW, 292 ft, DA, B1
 Clyde: WCPZ100.9 CC (ex WNCG)

Ohio:

Delaware: WLYR107.9 PC<2.6 kW, 505 ft
 XC: 40-14-43 / 82-55-48
 Gahanna: WCVO104.9 NC to 5 kW, 308', GE
 Greenfield: WVNU 97.5 PG< 2.3 kW, 302 ft
 XG: 39-24-28 / 83-21-15
 Jefferson: WCVJ 90.9 PC< 1850w, 643 ft
 XC: 41-37-50 / 80-45-35
 Kent: WKSU 89.7 PC< 14.5 kW, 909 ft
 DA, XC: 41-04-58 / 81-38-02
 Lancaster: WJZA103.5 PG< 4 kW, 403 ft
 XG: 39-51-52 / 82-38-19
 Lima: WYRX 92.1 FC to country "Froggy"
 Marion: WOSB 91.1 NW, news, classical
 // WKSU 89.7 Kent
 Norwalk: *NS 90.7 AF
 Pleasant City: *NS 92.1 AF
 Ripley: WAOL 99.5 PG< 11.5 kW, 318 ft, ND
 Sandusky: WMTX102.7 CC (ex WCPZ) "Mix 102.7"
 Willard: *NS 96.9 AF
 Youngstown: WHOT101.1 PC< 24.5 kW, 705'
 XC: 41-03-26 / 80-38-22

OKLAHOMA:

Ada: KADA 99.3 QC from 96.7
 Bartlesville: KYFM100.1 CX CP for 99.9 - C3
 PG> 100 kW, 981 ft, C1, XG: 36-53-07 / 96-15-04
 Bethany: KNTL 104.9 inc. to 328 ft
 XC: 35-29-53 / 97-37-10
 Chickasha: KTUZ 105.5 CC (ex KWCO)
 Clinton: KCLI 106.9 OSA to 106.7,
 XG: 35-29-00 / 98-8-54
 Eufala: KCES102.3 NC to 102.5 - C3, RX
 Grove: KGVF 99.3 OSA to C3, 15 kW, 312 ft.
 Guymon: *** 99.5 GA: add C1
 Healdton: KICM 93.7 PA: to C3 - Krum, TX
 Idabel: *NS 102.9 AF
 Lawton: KMGZ 95.3 PC> 14 kW, 312 ft, C3
 McAlester: KBCW 91.9 CC (NS)
 Magnum: KHIM 97.7 CC (NS)
 Newcastle: KKNG 93.3 NW, country oldies
 Oklahoma City: K264AF 97.1 now is // KTUZ 105.5
 Pocola: *NS 88.1 AF
 Poteau: KARG 91.7 NW, AFA contemp.
 Christian (Ft. Smith)
 Shawnee: KQCV 95.1 NW, religion (Bott R.)
 Soper: *** 102.7 PA: add class A
 Sulphur: *NS 90.7 3 kW, 298 ft.
 Sulphur: KFXT 100.9 PA: to 106.1 - A
 Woodward: KMZE 92.1 SG "Z92", with AC music
 Woodward: KWFX 93.5 SG "93-X"
 Woodward: KJOV 90.7 NW, contemp. Christian

104.9 fm 800 AM
the Light 105 **KNTL** **KQCV**
CHRISTIAN RADIO

OREGON:

Baker City: K201EH88.1 NS-10w: KAWZ 88.9 ID
 Banks: KBBT 107.5 GA: class C2 to C1
 Bend: *NS 90.5 AF
 Bonanza: KAQX102.9 NO-GE
 Canyon City: KJDY94.5 OSA to class C, 53 kW
 1364', XG: 44-17-50 / 119-12-09
 Cave Junction: *NS88.7 AF (S. Oregon U)
 Cherryville: KLVP 88.7 LC
 Cottage Grove: KEUG 105.5 LC
 Dalles: *** 101.5 GA: add class C3
 Depoe Bay: KDEP105.5 NO-GE
 Enterprise: K208DB89.5 NX-10w(DA): KPBX 91.1
 Grants Pass: KAPK91.1 LC
 Klamath Falls: K205DB 88.9 NS-10w(v): KAWZ 88.9 ID
 Milton-Freewater: KTHK 97.9 PG> 20 kW, 1322 ft, C1
 XG: 45-47-51 / 118-06-54
 Myrtle Pt: KTBR 94.1 LC
 Newport: *NS 92.7
 Pendleton: K220GQ91.9NS-10w: KCZO
 Portland: KUFO101.1 adds Howard Stern
 Portland: KRRC104.1 QC from 107.5, dec. to -95'
 XC: 45-28-51 / 122-37-51



Redmond: KSJJ 102.9 adds ABC country (&)
 Redmond: KLRR 107.5 GA: to 101.7 - C2
 Seaside: KULU 98.9 NO-GE
 Seaside: KCYS 98.1 LC
 Springfield: KKNV 93.1 inc. to 1299 ft.
 Sweet Home: KLVU107.1 PC> 9.6 kW, 2430 ft.
 Sunriver: *** 92.7 GA: add class C2
 Winchester: KLOV 89.3 LC

PENNSYLVANIA:

Barnesboro: *NS 93.5 AF
 Boalsburg: WBUS 93.7 NW, clas. hits "the Bus"
 Brookville: *NS 103.3 AF
 Cambridge Sps: WAQM 104.5 PG 2550w, 512 ft
 Coatesville: *NS 89.3 AF
 Franklin: WFRA 99.3 FC to ABC a/c (&)
 Lewisburg: WVBU 90.5 PC< 225 w, -33 ft
 XG: 40-57-18 / 76-52-55
 Marietta: W220BX91.9 NS-10w(v): KAWZ 88.9 ID
 Meyersdale: *** 98.5 PA: add class A
 Middletown: *NS 88.7 AF
 New Kensington: WZPT 100.7 PG< 12 kW, 984', DA
 Northumberland: WEGH 107.3 FC to classic hits
 Philadelphia: WBEB101.1 adds Delilah
 Philadelphia: WMGK102.9 PC> 8.9 kW, 1824 ft.
 Pittsburgh: WDRV 96.1 CC (ex WVTV) "The River"
 Scranton: W297AF107.3NS-50w: WEZX 106.9
 Stroudsburg: *NS 88.7 2 kW (v), 813 ft, DA
 Susquehanna: WKGB 92.5 XA: from class A to B1
 Tobyhanna: WKRF107.9PC< 840w, 876 ft
 XC: 41-02-37 / 75-22-38
 Youngsville: *NS 88.5 AF

RHODE ISLAND:

Westerly: WBLQ 88.1 LC

SOUTH CAROLINA:

Bluffton: WIJY 106.9 FC to adult contemp.
 Conway: WJXY 93.9 FC to CHR "Hot 93"
 Cross Hill: *NS 94.1 6 kW, 328 ft.
 Georgetown: WXJY93.7 FC to CHR // WJXY 93.9
 Marion: WCMG94.3 PC> 10.5 kW, 502 ft, C3
 XC: 34-26-20 / 79-29-44, CL: Latta, SC
 Mullins: WWSK107.1 FC to classic hits "Fox"
 Murrell's Inlet: WHGB 88.3 NW, relig. // WHCB 91.5
 Myrtle Beach: WJYR92.1 inc to 359 ft,
 XC: 33-43-17 / 78-53-44

Richburg: WRBK 90.3 NW, beach music & oldies
 St. George: WNKT107.5 CC (ex WBUB) "Kat Country"

SOUTH DAKOTA:

Clear Lake: *NS 107.1 AF
 Dell Rapids: *NS 95.7 AF
 Hot Springs: KZMX96.7 NC to 38 kW, 453 ft, C2, GE
 Ipswich: *** 107.9 GA: add class A
 Murdo: *** 104.9 GA: add class A
 Pierre: KLXS 95.3 PC> 100 kW, 840 ft, C1
 Presho: *** 100.3 GA: add class A
 Flandreau: *NS 107.9 16 kW, 413 ft, DA
 Rapid City: *NS 106.3 AF
 Roscoe: *** 105.3 GA: add class A
 Wessington Sps: KGGK 98.3 NO-RE

TENNESSEE:

Belle Meade: WNPL106.7 LC
 Benton: WBIN 93.1 FC to Reach s. Gospel (&)
 Bulls Gap: WBGQ100.7 CC (NS)
 Donelson: WAMB198.7 QC from 106.7
 Dyer: WLSQ 94.3 FC to modern rock // WLSZ
 Dyersburg: W202BG 88.3 NS-?? w, WYFG 89.3 SC
 Etowah: WDRZ103.1 FC to c. Christian // WBDX
 Graysville: WAYB 95.7 FC to soft AC // WAYA
 Henry: *NS 104.7 AF
 Hohenwald: WAUO 90.7 NW, AFA cont. Christian
 Humboldt: WLSZ105.3 FC to Radio 1 modern rock (&)
 Jackson: WMXX103.1 PG< 42 kW, 540 ft, DA
 Jamestown: WDEB103.9 dec. to 443',
 XG: 36-25-31 / 84-56-32
 Knoxville: WQBB104.5 FC to country "Kix"
 Memphis: WEVL 89.9 PC< 9.3 kW, 285 ft
 XC: 35-07-46 / 89-45-30
 Memphis: WYPL 89.3 NC to 100 kW, 1302 ft., RE
 Middletown: *NS 100.7 AF
 Nashville: WRVU 91.1 PG< 10 kW, 695 ft.
 Nashville: WNAZ 89.1 NC to 200w, DA, XC, GE
 Norris: *NS 106.7 AF
 Parker Crossroads: *NS 96.5 AF
 Red Bank: WJTT 94.3 PG> 3.3 kW,
 XG: 35-07-33 / 85-17-25
 Savannah: *NS 88.1 2.8 kW, 128 ft (AFA)
 Shelbyville: WZPC102.9 inc. to 974 ft.
 Signal Mtn: WXKT98.1 CC (ex WZST)
 Smithville: WJLE 101.7 FC to 4.4 kW
 Spring City: WAYA93.9 FC to soft AC (&)
 Wartburg: WECO101.3 PC> 3.5 kW, class C3
 Waynesboro: WFRQ 94.9PG> 7.7 kW, 594 ft, DA
 XG: 35-01-46 / 87-47-07



TEXAS:

Abilene: KAQD 91.3 NW, AFA cont. Christian (&)
 Abilene: KORQ100.7 PA: to 100.5 - C
 Abilene: KEAN105.1 inc to 886 ft
 XG: 32-16-35 / 99-35-38
 Abilene: KROW 92.5 FC to oldies "Kool 92.5"
 Alice: KNDA102.9 SG "DA 102.9" (Tejano)
 Austin: KKMJ 95.5 PC< 96 kW (h)
 Bandera: KEEP 98.3 PA: to 103.1 - A
 Beaumont: KYKR 95.1 NC to 462 ft, XC, GE
 OSA to C, 1069 ft, XG: 30-09-31 / 93-59-11
 Big Lake: *NS 98.3 50 kW, 430 ft.
 Big Spring: KBTS 94.3 PC< 8.3 kW, 561 ft.
 Bishop: KFLZ 106.9 dec. to 298 ft., PG> 25 kW
 class C3
 Blossom: *NS 92.7 AF
 Borger: *NS 106.7 AF
 Borger: KAVO 91.5 LC
 Caldwell: KLTR 95.1 NO-GE
 Callisburg: KPFC 91.9 CC (NS)
 Cameron: *NS 94.3 AF
 Canyon: KWTS 91.1 PG> 6 kW (cir), 141 ft
 XG: 34-59-22 / 101-54-45
 Center: KDET 100.3 PA; to 100.5 - A
 Centerville: KAJG 103.1 OSA to C3, 25 kW, 328 ft
 XG: 31-16-56 / 95-53-42, QG to 105.9 - C3
 Clarendon: KEFH 99.3 NO-GE
 College Stn: KEOS89.1 PG> 1 kW (v)
 Comanche: KOXZ 94.3 CC (NS)
 Dallas: KYNG105.3 dec. to 1528 ft.,
 XC: 32-35-05 / 96-57-46
 Decatur: KRNB105.7 PG< 94 kW, 1889 ft.
 Eastland: KVMX 96.7 FC country // KSTV 93.1
 Edna: *NS 96.1 NO-RE
 Electra: KOLI 94.9 NW, oldies (Wich. Falls)
 El Paso: KATH 94.7 CC (ex KSET) "Kat Country"
 Farmersville: KXEZ92.1 CC (NS)
 Gardendale: K201EL88.1 NS-250w(v), DA: KAWZ-ID
 Gatesville: *NS 89.9 11 kW (v), 449 ft (AFA)
 George West: *NS104.1 3 kW, 249 ft.
 Giddings: KANJ 91.5 NW, AFA cont. Christian
 Goliad: KHMC 95.9 NC to 25 kW, 321 ft, RX
 Granbury: KDXT106.7 CC (ex KMRT)
 Graham: KWKQ107.1 PG> 25 kW, 92 ft, C3
 Greenville: K217CZ91.3NS-250w: WYFG 89.3 SC
 Gregory: *NS 104.5 AF
 Hallettsville: KTXM 99.9 LC, PG 3.4 kW, 348 ft.
 Hebbronville: KEKO 101.7 CC (NS)
 Hondo: KRBH105.9 PA: to 98.5 - A
 Hooks: KLLI 95.9 FC to CHR "Hot 95.9" (Texar.)
 Ingram: *NS 90.1 NO-RE
 Jacksonville: KLJT 102.3 PA: from class A to C2
 Jourdanton: KBOP 95.7 6 kW, 289 ft., CC (NS)
 Kerrville: KKER 91.1 CC (ex KBBP), NW, religion
 // KHCB 105.7 Houston
 Leakey: *** 106.1 PA: add class A
 Littlefield: KAIQ 95.5 NO-GE
 Llano: KBAE104.9 PA: class C3 to C2,
 CL: Marble Falls, TX
 Luftkin: KSWP 90.9 PC> 100 kW, 807 ft, DA
 McCook: KCAS 91.5 CC (NS)
 Mason: *** 106.1 PA: add class A
 Memphis: KLSR 105.3 noted // KGNC-97.9 in
 the evening (I've heard this too-grc)

Texas:

Meridian: *** 104.9 PA: add class A
 Mt. Enterprise: KGRI99.9CC (NS)
 Mt. Pleasant: KPXI100.7 PA: to C2, CL: Overton, TX
 New Boston: *NS105.1 A F
 New Ulm: KMIA 92.3 NO-GE
 Plainview: *NS 88.5 AF
 Pleasanton: KBUC98.3 PA: to 98.5 - A
 Portland: KRMP 91.1 CC (NS)
 Rockport: KBTE 102.3 CC (ex KZJM) (they were
 briefly KAJM)
 Roxton: *** 98.9 PA: class A (replace 102.7 A)
 San Angelo: KYZZ 100.1 LC
 Seadrift: KMAT105.1 NO-GE
 Shamrock: KRMN 92.7 LC
 Stamford: KOES 92.1 NO-GE
 Sterling City: KKCN96.5 CC (ex KAKR)
 Three Rivers: *** 100.5 XA: add class A
 Tye: KBCY 99.7 SG "Big Country 99-7"
 Victoria: KEPG100.9 RA with CHR
 Wake Village: *NS92.5 AF (noncomm)
 Weatherford: *NS 88.5 AF
 Wellington: *** 103.5 GA: add class C3
 Wellington: K219DJ91.7 NS-250w: WAFR 88.3 MS
 Winnsboro: KWNS104.9 OSA to 104.7, PG< 2750w,
 492', XG: 33-04-17 / 95-17-22
 Winters: *NS 96.1 AF
 Victoria: KEPG100.9 RA with CHR
 Waco: KCKR 95.5 QG to 95.7, C2, PG< 24 kW
 505 ft, non-dir, XG: 31-30-51 / 97-11-43
 Wichita Falls: KNIN92.9 SG "92-9 NIN"

UTAH:

Banning: *NS 92.1 AF
 Brigham City: KRAR 106.9 CC (ex KUUV)
 Levan: *NS 99.1 AF
 Logan: KUSR 89.5 CC (NS)
 Logan: *NS 90.5 AF
 St. George: KZEZ 99.7 GA: to 99.9 - C
 Smithfield: KGNT103.9 CC (ex KNUUC) "The Giant"
 Spanish Fork: KOSY 106.5 PG< 45 kW, 2758 ft
 XG: 40-16-50 / 111-56-06

VERMONT:

Johnson: WJSC 90.7 PC> 200 w.
 St. Johnsbury: WCKJ 90.5NW, religion // WCMK 91.7

VIRGINIA:

Buena Vista: WREL96.7 NC to 10 kW, 492 ft, GE
 Cape Charles: WAZP90.7 7.5 kW, 515 ft, DA CC (NS)
 Deltaville: *NS 92.3 AF
 Exmore: *NS 106.1 25 kW, 305 ft.
 Falmouth: *NS 104.5 AF
 Jonesville: *NS 99.1 AF
 Luray: WLCC105.7 PC< 135w, 2053 ft
 XC: 38-36-05 / 78-37-57
 Norfolk: WVKL 95.7 CC (ex WVCL) "Kool 95"
 Petersburg: WVST 91.3 NC to 2.2 kW (v), 167', GE
 Petersburg: WSOJ100.3 adds Doug Banks
 Shenandoah: *NS107.1 AF
 Warrenton: WTOP107.7 CC (ex WWUP), FC to
 news & talk // WTOP 1500
 Warrenton: WWUP94.3 CC (ex WTOP), FC to
 country

WASHINGTON:

Bellevue: KBCS 91.3 PC> 7.9 kW (cir), C3
 Bremerton: KRWM106.9 adds Delilah (Seattle)
 Ellensburg: KCWU 88.1 500w, -194 ft. CC (NS)
 Ephrata: KTAC 93.9 LC
 Ephrata: KULE 95.9 QG to 92.3 - C2, PG>
 26 kW, 672', XG: 47-18-18 / 119-35-53
 Kennewick: K204CZ88.7 NS-16w: KEFX
 Leavenworth: KLVH97.7 NW, jazz
 Mabton: KLES 98.7 LC
 Omak: KNCW 92.7 CC (ex KOMW)
 Omak: KZBE 104.3 CC (ex KAUQ)
 Pasco: KEYW 98.3 NC to 1214', C3, GE
 Quincy: KYAK 95.9 CC (ex KTRQ)
 Shelton: *NS 94.5 AF
 South Bend: KFMV105.7 NO-GE
 Sunnyside: KAYB 88.1 LC
 Twisp: K207CH89.9 NS-3w: KAWZ 88.9 ID
 Vancouver: *NS 105.9 5.9 kW, 1141 ft.
 Walla Walla: KWWS89.7 LC
 Winthrop: *** 97.5 GA: add class A

WEST VIRGINIA:

Charleston: W237AZ 95.3 NS-250w: WRVZ 98.7
 Clarksburg: WPD104.9 FC to classic country (&)
 Clarksburg: W220BZ 91.9 NS-10w: KLOV-FM
 Elkins: W220CA91.9 NS-10w: WAFR 88.3 MS
 Elkins: WDNE 98.9 QC from 99.3, now B1, PC>
 5.1 kW, 725', XC: 38-54-36 / 79-47-18
 Kenova: *** 97.9 GA: add class A
 Parkersburg: WHCM99.1 adds Moby
 Petersburg: WAUA 89.5 NW, W.V.P.R.
 Salem: *NS 103.3 AF
 Vienna: WRZZ-1 106.1 NS-500w, DA
 Westover: WMQC100.9 FC to classic rock (&)

Magic 101
WMQC

WISCONSIN:

Algoma: WRLU104.1 CC (NS)
 Allouez: WJLW106.7 FC to clas rock "Eagle"
 Antigo: WACD106.1 LC
 Barron: *NS 97.7 AF
 Brillion: WEZR107.5 SG "107-5 The Planet"
 FC to gold based AC
 DeForest: *NS 93.1 AF
 Eau Claire: WVCF 90.5 LC
 Fond Du Lac: KFIZ 107.1SG "K107.1" hot AC
 Forestville: WRKU102.1 CC (NS)
 Green Bay: WEMY91.5 CC (ex WGBW), FC to
 religion // WEMI
 Green Bay: WHID 88.1 NW, news & talk, the
 Wisc. PR "Ideas" network
 Madison: WSUM 91.7 NO-GE
 Manitowoc: WQTC102.3 SG "Q102.3" classic rock
 Mayville: WMVM98.7 inc. to 328 ft, DA
 XG: 43-26-17 / 88-31-35
 Michicot: WGBM94.7 "Mustang Country 94.7"
 Nekoosa: WXEC 93.9 not noted on the air yet
 Portage: WBKY 95.9 not noted on yet
 Prairie du Chien: WQPC 94.3 CC (ex WPRE)

Wisconsin:

Racine: WKKV100.7 adds Doug Banks
 Random Lake: *NS91.3 AF
 Seymour: WECB104.3 NO-GE
 Sheboygan: WSHS91.7 noted on with rock
 Sheboygan: W255AC 98.9 on with WPFF 90.5
 Sheboygan: xtrs on 94.9 & 101.7 not heard
 Spencer: WOSQ 92.3 SG "Q92"
 Stevens Point: WSPT 97.9 now using calls, no
 longer using "Star 98" slogan
 Sturgeon Bay: *NS88.5 50 kW, 518 ft.
 Wausau: W212BB 90.3 NS-10w(v): WPCS 89.5 FL
 Wausau: XLTR 99.1 on // WMZK 104.1
 Whiting: WYTE 96.7 SG "Y 96.7"
 Wisconsin Rapids: XLTR 93.5 on // WWIB 103.7

WYOMING:

Buffalo: KBUW 90.5 CC (NS)
 Casper: KASS 106.9 dec. to 1765 ft
 XC: 42-44-37 / 106-18-31
 Casper: K209CS89.7 NS-10w(v), DA: WPCS-FL
 Casper: *** 96.5 PA: add class C1
 Casper: *** 93.5 PA: add class C1
 Casper: *** 100.5 PA: add class C1
 Cheyenne: *NS 89.7 AF
 Gillette: KUWG 90.9 LC
 Gillette: KAXG 89.7 NW, AFA con. Christian
 Green River: *NS 92.1 AF
 Jackson: *NS 92.3 AF
 Kemmerer: KAOX107.3 NO-GX
 Lander: KDLY 97.5 FC to classic rock (live) from
 6 am to 5pm, JRN hot AC (&) otherwise
 Lost Cabin: *NS 99.1 AF
 Moorcroft: *** 93.5 GA: add class A
 Newcastle: KUWN 90.5 NW, clas/news // KUWR 91.9
 Orchard Vly: *NS 89.7 AF
 Sheridan: KYTI 96.5 PG< 1.7 kW, 1207 ft,
 XG: 44-37-20 / 107-06-57
 Sheridan: *NS 88.7 AF (AFA)
 Worland: KKLX 96.1 FC to WW1 adult rock (&)

U.S. TERRITORIES:

AMERICAN SAMOA:

Leone: *NS 93.9 370w, 1253 ft.

MARIANNA ISLANDS:

Chalan Kanoa: KRNM 88.1 NW, variety (Korean mu
 sic, surf music, and NPR & BBC programming)
 Garapan: KPXH100.3 NO-GE

PUERTO RICO:

Arecibo: WCMN107.3 build new auxillary facil.
 Culebra: WJVP 89.3 LC
 Manati: WNRT 96.9 NC to 951 ft, RE

VIRGIN ISLANDS:

Charlotte Amalie: WVNK 97.1 NO-GE
 Charlotte Amalie: WARD 93.1 PG> 1.6 kW, 1443 ft.
 Christiansted: WVIS 106.1 PG> 50 kW, 518 ft
 XG: 18-19-37 / 65-18-21, CL: Vieques
 Frederiksted: WPPD98.5 6 kW, -16 ft., CC (NS)
 Val D'Or: WVD 900 QG to 1000 ft.
 (the "Brew Crew" is on Amos, PQ)

THE BREW CREW'S
WEKZ - FM



CANADA

ALBERTA:

Calgary: CJSI 88.9 PG< 19 kW
 Medicine Hat: CJC1390 QG to 96.1, 100 kW

BRITISH COLUMBIA:

Blue River: *NS 90.3 8.2 w wanted // CISN-FM
 Blue River: *NS 93.9 8.2 w wanted // CFMI-FM
 Castlegar: CKQR 760 QG to 99.3, 333 w.
 Courtenay: *NS 97.3 4.7 kW
 Ft. Nelson: CKRX102.3 QC from 590, 1.8 kW
 CC (ex CFNL)

Lower Post: *NS 98.1 3 w, // CHON-98.1 YT

Metchosis-Sooke: CBCV- 99.5 CC (NS)

Trail: *NS 104.1 20w, // CKQR-FM

Victoria: CBCV 90.5 CC (NS)

MANITOBA:

Churchill: *NS 96.9 44 w. (native)
 Moose Lake: *NS 96.9 9 w.
 Oxford House: *NS96.9 22w, all 3 // CINC-FM
 Steinbach: *NS 96.7 50 kW, co-owned with
 CHSM 1250, but not to replace it

NORTHWEST TERRITORIES:

Ft. Smith: *NS 92.3 37 w wanted // CIRK 97.3
 Yellowknife/CJCD 100.1 QC from 1240, 400 w

ONTARIO:

Atitokan: CBQI 90.1 CC (ex CBLA)
 Chapleau: CJWA100.7 CC (ex CFNO-8)
 Hamilton: CIOI 101.5 CC (NS)
 Killaloe: *NS 102.9 33 w, community stn
 Lindsay: CKLY 91.9 QC from 910, now 14 kW
 SG "Y92"
 New Liskeard: CJTT 1230 QG to 104.5, 10 kW
 Niagara Falls: CFLZ 91.9 QG to 105.1, 400w.
 Rama: C*** 90.7 Native station noted here
 about 50w. Rama is an Ojibwe community
 Toronto: CBLA 99.1 NW, CBC Radio One
 variety (99.1 returns after an 8 year absence)
 QC from 740 kHz, PG> 48 kW, CC (ex CBL)
 Welland: CHOW1470 QG to 91.7

QUEBEC:

Chicoutimi: CBJE 102.7 QC from 107.9, PC< 30 kW
 Chicoutimi: CBJ 1580 wants 93.7, 50 kW
 Lenoxville: CJMQ 88.9 PG> 250 watts
 Post Laverendy: VF2154 100.1 will discontinue
 operation
 Post Laverendy: VF2153 98.1 will discontinue
 operation
 Rouyn-Noranda: CKRN 1400 QG to 98.3, 862 w.
 Ste-Hyacinthe: CFEI 106.5 PC< 640w, 1151 ft.
 Sept-Iles: CKCN 560 QG to 94.1, 4880 w

YUKON:

Whitehorse: CHON98.1 PC> 4261 w.

TRINIDAD &
TOBAGO

90.5 "Radio 90.5 FM"
 91.1 "Radio ICN"
 93.5 Gem Radio "The Caribbean
 Radio Station"
 95.1 "Rhythm Radio 95.1 FM"
 96.1 "Energy Radio 96.1 WEFM"
 97.1 "Music Radio 97 FM"
 98.9 "Yes FM"
 100.0 "Radio ICN"
 102.1 "Power 102 FM"
 103.1 "103 FM Stereo"
 105.5 "105 FM"
 106.1 "Radio 106 FM"

PIRATE WATCH:

• Brooklyn, NY: Radio Moisiach has been operating 24 hours a day, 7 days a week for some time now, on 87.9. Most of the time, the programming is Orthodox Jewish programming, declaring that they have a right to be on the air, as the FCC is "meaningless".
 • Weatherford, Texas: Someone noted here, with maybe about 10 watts, relaying KLIF 570 Dallas.
 • The FCC released the Rodger Skinner proposal for a new class of micropower FMs. The proposal would add "small-scale, low-cost radio service that would provide enhanced broadcasting opportunities for individuals to offer local/niche programming, special event coverage and other specialized broadcasts ..." Three new classes would be created within the FM commercial band. The first would use ERPs within 50 to 3,000 watts, up to 328' HAAT. The second class would be licensed secondary to "regular" stations, from 1 to 50 watts ERP at less than 150' HAAT, providing around 5 miles coverage. The third class is for special event coverage, and would be on the air for up to 10 days at a time, with a maximum ERP of 20w, and HAAT of 100 ft. Skinner also proposed restricting ownership to those living within 50 miles of a station, and no licensee would be allowed to own more than 3 stations nationwide.
 • The CRTC has increased the "Can-Con", or Canadian content rules, from 30% to 35%. This means that stations' airplay must be composed of at least 35% Canadian artists. Previously, during the 6 a.m. to 7 p.m. slot, this percentage was only 25%. That has also been raised to 35%. The CRTC is hoping to strengthen the Canadian record industry. The CAB (Canadian Association of Broadcasters) has criticized this decision. However, the CAB was happy with the CRTC's decision to allow local ownership changes in Canada similar to the U.S. "duopolies".

TV NEWS

June 1998

Douglas E. Smith W9WI
1385 Old Clarksville Pike
Pleasant View, TN 37146-8098
w9wi@bellsouth.net
NOTE: NEW EMAIL ADDRESS!

*: Non-commercial station
nc: No Change
+/-: Channel offsets (plus,
minus, zero, and none)
z/n: Digital TV station

APPLICATIONS FOR NEW STATIONS

St	Ch	ERP	Ht.	City	Applicant	Latitude	Longitude
BC	20	.005		Passmore	Knowledge		
CA	31^	375	954	Los Angeles	KTLA [5]	34-13-36	118-03-56
CA	36^	380	991	Los Angeles	KNBC [4]	34-13-32	118-03-52
CA	53^	183	924	Los Angeles	KABC [7]	34-13-37	118-03-58
CA	60^	469	1087	Los Angeles	KCBS [2]	34-13-55	118-04-18
CA	56^	501	432	Oakland	KTVU [2]	37-45-19	122-27-06
CA	24^	561	437	San Fran.	KGO [7]	37-45-19	122-27-06
DC	34^	646	254	Washington	WUSA [9]	38-57-01	77-04-47
DC	48^	813	242	Washington	WRC [4]	38-56-24	77-04-54
GA	10^	16.5	303	Atlanta	WXIA [11]	33-45-24	84-19-55
GA	19^	49	329	Atlanta	WGNX [46]	33-48-27	84-20-26
GA	27^	964	332	Atlanta	WAGA [5]	33-47-51	84-20-02
IL	3^	3	366	Chicago	WBBM [2]	41-53-56	87-37-23
MA	20^	200	191	Boston	WCVB [5]	42-18-37	71-14-14
MA	30^	600	390	Boston	WBZ [4]	42-18-37	71-14-14
MA	23^	49.6	326	Marlborough	WHSB [66]	42-23-03	71-29-41
MI	44^	200	323	Detroit	WWJ [62]	42-26-52	83-10-23
MI	45^	973	281	Detroit	WDIV [4]	42-28-58	83-12-19
PA	26^	770	375	Phila.	KYW [3]	40-02-33	75-14-33
PA	64^	1000	332	Phila.	WPVI [6]	40-02-33	75-14-33
PA	67^	759	343	Phila.	WCAU [10]	40-02-31	75-14-12

CONSTRUCTION PERMITS GRANTED FOR NEW STATIONS

St	Ch	ERP	Ht.	City	Applicant	Latitude	Longitude
AR	64+	24.8	K64FO	Fayettevil.	KNLC [24]	36-08-50	94-11-14
AZ	3z	100	5	Douglas	Winstar BC	31-22-38	109-31-20
CA	32n	9.9	K32ES	Sta. Barbara		34-28-12	119-40-30
CT	33n	2.4	W33BS	Darien	Rev Thomas	41-02-47	73-34-31
IN	69-	.074	W69EA	Hammond	M./E. Ice	41-45-44	87-33-24
LA	21+	3020	143	Minden	Paxson	32-44-40	93-22-54
MB	30	0.1		Neepawa			
ME	23-	5000	308	Waterville	Winstar	44-09-16	70-00-37
MT	58n	10	K58FP	Bozeman	J. Blau	45-40-24	110-52-04
MT	35-	10	K35FA	Missoula	S. Wilson	47-02-27	113-59-10
MT	62n	10	K62FP	Missoula	R. Wilson	47-02-27	113-59-10
NJ	31+	19.3	W31BV	Atlantic C.	K. Gugliemi	39-21-02	74-26-56
NJ	27z	3	W27CA	Trenton	Gallagher	40-13-14	74-46-03
NJ	33-	0.82	W33BU	Trenton	Comm. Coll	40-15-30	74-38-59
NY	27+	1.25	W27CB	Hempstead	P. I. R. G.	40-41-08	73-36-37
NY	29+	7	W29CF	Hempstead	SDA Church	40-45-27	73-32-58
PA	46-	17	W46BL	Allentown	WPSG [57]	40-33-58	75-26-06
TX	18+	5000	101	Farwell	Winstar	34-21-48	103-13-05
TX	65+	2.61	K65HA	Fort Worth	Presidio	32-45-05	97-19-53
TX	30z	1530	222	Odessa	Winstar	32-05-51	102-17-21
VA	38z	1	W38CK	Gainesville	Y. Malony	38-30-15	77-30-06
WA	24+	1450	272	Pullman	Pullman BC	46-50-51	116-58-26

W69EA's tower is in Chicago, Illinois. I'm pretty sure the power given is a typo; my guess is it should be 7.4KW. The new Pullman, Washington station on channel 24 will have its tower in Idaho. The station in Neepawa, Manitoba will be a community-events station, mostly in English but with some Polish and Ukrainian-language programs.

New-station permits expired, dismissed, etc.:

St	City	Ch	# permits	St	City	Ch	# permits
AZ	Douglas	3	4	LA	Minden	21	7
ME	Waterville	23	10	MO	Joplin	64	1
NJ	Atl. Highlands	33	1	TX	Farwell	18	1
TX	Odessa	30	10	WA	Pullman	24	1
WA	Spokane	34	1				

APPLICATIONS TO CHANGE EXISTING FACILITIES

St	Ch	ERP	HAAT	Call	City	Latitude	Longitude
AL	15z	5000	486	WOWL-TV	Florence	34-49-35	87-02-01
CA	2z	nc	nc	KCBS-TV	Los Angeles	34-13-57	118-04-18
DC	30z	20.7		WMDO-LP	Washington		
FL	2-	nc	nc	WESH	Daytona Beach	28-56-16	81-18-57
FL	48z	50		W27AQ	Ft. Lauderdale	25-58-03	80-12-34
NY	50	6.9		WVVH-LP	Southampton		
NY	67+	5000	415	WNGS	Springville	42-37-32	78-37-18
PA	7+	0.1		W26AD	Allentown		
PA	57z	5010		WPSG	Philadelphia		
PR	20z	78	288	WKPV	Ponce	18-04-49	66-44-53
RI	50	18.4		WRIW-LP	Providence		
TX	53	9.12		K55FV	Houston		
TX	30-	8.71		KHTX-LP	Huntsville		
VA	35+	nc	nc	WRLH-TV	Richmond	37-30-22	77-42-03
WA	6z	nc	nc	K41CU	Pt. Townsend		
WI	6z	nc	nc	WITI-TV	Milwaukee	43-05-26	87-53-50
WV	60+	2035	300	WVPX	Martinsburg		

Stations in *italics* have not actually moved. The applications are to correct erroneous coordinates in the FCC database. WMDO-LP wants to move from channel 48, and WVVH-LP and WRIW-LP both from channel 23.

APPLICATIONS TO CHANGE CONSTRUCTION PERMITS

St	Ch	ERP	HAAT	Call	City	Latitude	Longitude
NE	55	13.9		K17DW	Columbus		
NE	58	14		K65GE	Columbus		
NM	35+	nc	nc	K21FE	Albuquerque		
WI	48z	nc	nc	WEUX	Chippewa Fls.	44-57-24	91-40-03

CHANGES GRANTED TO EXISTING FACILITIES

St	Ch	ERP	HAAT	Call	City	Latitude	Longitude
CO	18z	33.9		K18FI	Denver	39-23-06	105-02-51
MI	68z	37.6		W68CH	Detroit	42-23-37	83-08-50
NV	24-	3.1		K24EW	Overton	36-52-40	116-40-30
NY	27-	10		WNXY-LP	New York		
OH	65-	8		W65DL	Cleveland		
QU	5+	0.575		CBFAT	Chibougamau		
QU	4z	0.238		CBMCT	Chibougamau	49-52-29	74-23-00
PR	52z	274		WDZE	Carolina		

K18FI is a move from channel 13, where it was K13OI, a KUSA[9] translator in Pinewood Springs. WNXY-LP moves from channel 54. W65DL was W47BE. (and the corporate name is "Channel 29 Associates".) W68CH's city of license is changing from Dearborn. K24EW was K02FJ.

Changes expired, dismissed, etc.:

St	City	Ch	Call	St	City	Ch	Call
CA	Atascadero	7	K07WA	CA	Arroyo Grande	8	K08MD
IL	Chicago	23	W23AT	IA	Cedar Rapids	48	KPXR
NE	Columbus	58	K65GE	OK	Stillwater	50	K50DF

CHANGES GRANTED TO CONSTRUCTION PERMITS

St	Ch	ERP	HAAT	Call	City	Latitude	Longitude
CA	15+	0.65		K15EX	Fresno		
CA	68n	10		K68FR	Mojave	34-58-45	118-10-02
FL	5+	0.233		WOCX-LP	Sebring		
HI	64-	17.97		K64FN	Kailua	21-23-45	158-05-58
NV	43z	5.1		K43FO	Las Vegas		
NY	38-	0.6		W38CL	Bronx	40-54-50	73-47-13
OH	25z	26.5		W25CI	Steubenville	40-21-59	80-35-22
PA	63-	13.55		W63CO	Philadelphia	40-05-00	75-10-47

W38CL sets a new record for mobile LPTVs - its original city of license was Coral Gables, Florida! K68FR is a move from channel 31 where it was K31DN. WOCX-LP moves from channel 4. K43FO was K15EP, bounced from channel 15 by new full-power station KINC. W25CI was W24BC. W63CO was W38BR, New Brunswick, NJ. K15EX was K05KM. (it's interesting to note another channel 15 station, K15ET, is already licensed to Fresno, and to a different religious organization. But the K15ET and K15EX transmitters are over 70km apart.) K64FN was K65FC.

TECHNICAL CHANGES ON THE AIR

St	Ch	Call	City	What happened
CA	46+	KTCD-LP	San Diego	move from channel 57n, huge power decrease (to only 12 watts), minor tower height decrease.
DE	4+	WLWP-LP	Millsboro	move from Ocean City, MD, about 25km northwest (same sites as WEWE-LP); moderate power & minor tower height increases.
DE	24z	WEWE-LP	Sussex Co.	move from ch. 60n, Ocean City, MD, about 25km northwest; major power & minor tower height increases.
FL	43+	WBSF	Melbourne	moderate power decrease.
NC	16z	WGPX	Burlington	moderate power increase & minor tower height decrease; move about 40km NW.
SD	9z	KBHE-TV*	Rapid City	minor power & tower height increases; move a few meters southeast.
UT	50n	K50FC	Garrison	move from K68DY, ch. 68.
UT	44n	K44FB	Leamington	move from K03DX, ch. 3; major power & minor tower height increases.
WY	33-	KKTU	Cheyenne	huge power increase; minor tower height decrease; add elliptical polarization.

NEW STATIONS GRANTED/REQUESTING OPERATING LICENSES OR NOTED ON THE AIR

St	Ch	ERP	HAAT	Call	City	Latitude	Longitude
AL	38z	17.4		W38BQ	Huntsville	34-45-28	86-39-44
AR	44n	5		K44EV	Hot Springs	34-33-56	93-05-03
CA	23+	15.1	47	KBSV*	Ceres	37-35-21	120-57-23
CA	28-	9.82		K28EZ	Fresno	36-18-17	120-24-08
CA	21-	0.48		KAME-1	Tahoe City	39-18-38	119-53-01
MD	52z	20.4		W52AS	Frederick	39-19-50	77-31-29
ND	2+	0.027		K02PD	Fargo	46-52-42	96-47-08
NJ	58-	12.5		WNJB-1	Long Branch	40-13-11	74-03-13
NJ	58-	8.5		WNJB-2	Blairstown	40-57-14	74-57-29
TX	30n	30.3		K30FF	La Feria	26-08-28	97-50-04
TX	67n	12.7		K67HC	McAllen	26-12-04	98-13-53
TX	7z	0.122		K07WS	San Antonio	29-18-04	98-24-59
WI	52z	10	120	WVRS-TV	Mayville	43-26-11	88-31-34

STATIONS DELETED/DISMISSED/ETC.

St:	Call:	St:	Call:	St:	Call:	St:	Call:
CA	K53DO	HI	K18EI	HI	K19DP	HI	K23DW
HI	K55GO	JA	XEDK	MD	W52AS	MO	K32CL
MO	K42EG	PA	W26AV	SC	W45BP	SC	W48BV
SC	W67DP	WY	K20FD				

CALL CHANGES

Was:	Now:	City:	Ch	Was:	Now:	City:	Ch
K20DR	KCEE-LP	S.L. Obispo, CA	20	K27CO	KGJT-LP	Gd. Jctn., CO	27
WDZL	WBZL	Miami, FL	39	W43AY	WWDT-LP	Naples, FL	43
W15BO	WXDT-LP	Naples, FL	15	W32BL	WYDT-LP	Naples, FL	32
W52CK	WZDT-LP	Naples, FL	52	WYHS-TV	WAMI-TV	Hollywood, FL	69
WDVL-LP	WPXJ-LP	Jacksonvl., FL	41	new	KBDP	Ames, IA	23
W24BP	WNOI-LP	Flora, IL	24	K40DZ	KAJN-LP	Lafayette, LA	40
KRME	KRME-TV	Bismarck, ND	3	new	KNDX	Bismarck, ND	26
new	KJND	Minot, ND	24	W22BM	WLXK-LP	Elizabeth, NJ	22
KADO	KWBQ	Santa Fe, NM	19	K31DO	KNBX-LP	Las Vegas, NV	31
W56CV	WTVU-LP	Niles, NY	56	W15AL	WBXO-LP	Rochester, NY	15
W35AQ	WOBX-LP	Syracuse, NY	35	W34BT	WBQZ-LP	Watertown, NY	34
W39CE	WVXB-LP	Glens Falls, NY	39	WLWG-LP	WCPX-LP	Columbus, OH	62
KTLC	KPSG	Okla. City, OK	43	K43EK	KFXG-LP	Portland, OR	43
K60FS	KGSW-LP	Keene, TX	60	KUPX	KUWB	Ogden, UT	30
KUWB	KUPX	Provo, UT	16	W39AS	WBVT-LP	Barre, VT	39
W49BU	WVBK-LP	Londonderry, VT	49	WLYJ	WVFX	Clarksburg, WV	46

PROGRAMMING CHANGES

Call:	Location:	Programming:
KPSN-LP [22]	Payson, AZ	sold to KPNX [12]
K25FT	Bakersfield, CA	new, 3ABN.
K28EZ	Fresno, CA	seen with VCC home shopping.
W59CX	Melbourne, FL	sold to 3ABN.
WNGM [34]	Athens, GA	"Box Pulse" (see Forum, Jim Ayers)
W20AU	Atlanta, GA	Nostalgia Channel, scrambled (see Forum)
WTTV [4]	Bloomington, IN	from UPN to WB.
WTTK [29]	Kokomo, IN	from UPN to WB. (parallel to WTTV)
WNDY [23]	Marion, IN	from WB to UPN.
KADO-LP [15]	Shreveport, LA	"America's Voice"
W20AZ	Battle Creek, MI	sold to WOOD [8]; to be Local Weather Station (LWS)?
K61BS, K67CE	Gallina, NM	sold to KOB [4] and KRQE [13].
K09LQ	Guadalupita, NM	sold to KOB [4].
K09DZ	Mora, NM	sold to KOB [4].
KPSG [43]	Okla. City, OK	from TLC to UPN.
KBCB [24]	Bellingham, WA	adds home shopping, ethnic (Chinese & other Asian) programming, and movies.
K43EM	Cheyenne, WY	sold to religious organization
K13NZ	Shoshoni, WY	sold to KTWO [2, NBC/WB]

OTHER STUFF

K49DF (Phoenix, AZ) has withdrawn its request to operate experimentally as a DTV station. And the sale of W42BE Fairfax, VA to the religious organization that used to run channel 66 in Manassas has been dismissed. If WOWL-TV is granted the move and power increase requested, it will basically become a Huntsville station. Either WOWL or WAFF [48] would almost certainly lose their NBC affiliation.

The "Community Broadcasters' Association", a trade group for LPTV operators, has petitioned the FCC to create a "Class A" TV service. NTSC Class A stations would be permitted to use up to 10% of the power allowed for regular NTSC stations; the power limits for DTV Class A's would be the same as for regular DTV stations. A LPTV operator could obtain a Class A license by showing they met the minimum operating hours requirements, aired at least 3 hours a week of programming produced in studios within their coverage area, and would obey all FCC regulations applicable to full-power stations except where the power level or channel

allocation method made it impossible. (currently, many non-technical regulations don't apply to LPTVs) Class A TV stations would be a primary service, protected from interference from all newer stations. (both LPTV and full-power) I do not expect this proposal to be adopted without amendment - it would cause too many problems for the DTV conversion.

The SCT, the Mexican government agency responsible for regulation of radio and TV stations, has posted its database on their Web page: <http://www.sct.gob.mx/infraestructura.html>. The TV section does not appear to be 100% complete, I think the TV Azteca and Televisa web pages list some stations that aren't on the SCT page. (but I think the missing stations are very low power relayers)

Please note my new email address. The old Compuserve address will be phased out soon. Thanks to Chip Kelley for information appearing elsewhere in this month's column.

FORUM

Jim Ayers, Norcross GA:

Jim reports some interesting programming happenings in the Atlanta area.. WNGM airs what seems to be a new service. It looks like The Box (the pay-per-view music videos seen on LPTV in many cities), but the silent screens listing videos available for airing aren't shown. An insert reads "Box Pulse", which is what I'll call this network if it pops up anywhere else..

W20AU has been airing the Nostalgia Channel for about 2 months, but probably not on purpose... "The video is scrambled, inverted, tearing to the side, resembling the subscription stations of the early '80s. I'm assuming this is some (satellite) demod tuning slip-up on the part of this bonehead station." Yep, there seems to be plenty of that to go around in the LPTV world... Jim speculates that W20AU's owners, the Valuevision home-shopping network, don't have anyone in the area monitoring their station & don't know there's anything wrong. I'm sure Jim's right about that.

Mike Cherry, Salt Spring Island BC:

Mike reports the programming additions to his local KBCB [24]. KBCB is still spending most of its time airing multilingual ethnic programming from the German government channel "DW", but other material has been added. The local programs also include commercials -- the DW material is non-commercial. The station even has a Web site now: www.loop.com/kbcb.

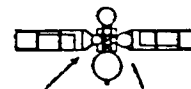
Also in the Bellingham area, Mike confirms that K48DM is in fact still on the air and relaying KTZZ [22] Seattle. However, KING [5] Seattle's DTV channel is 48 - and KING has filed an application to use it - so K48DM's days on that channel are numbered. (you will probably note an unusual number of applications for LPTVs to change channel this month; DTV is responsible for much of this)

Mike knows of no LMA between KCTS and KBTC. KCTS [9] has an application in for a NTSC relay on channel 34 at Bellingham, which Mike says is "badly needed by those here in the Gulf Islands and their US counterparts - the San Juan Islands. Most of these islands do not have cable TV service and have as a local full-powered CKVU-10 Vancouver." There are two applications on file for channel 34 at Bellingham; the other one is from KBTC.

Danny Ogletorpe, Shreveport LA:

A frequent skip target of the past is now just a memory... XEDK [6] Guadalajara has been shut down. Fernando Garcia told Danny there was too much interference from high-powered FM stations. XEDK has been replaced by a new independent station on channel 5, calls unknown. The station uses the slogan "Canal Cinco", but is not affiliated with the Mexico City station (XHGC [5]) with the same slogan.

SATELLITE NEWS



GEORGE W JENSEN
4604 ANNTANA AVE
BALTIMORE MD 21206-4220

A somewhat slow few weeks. Not much in the way of additions and deletions.

Satcom 4

16 - Request Pay-Per-View - will cease to exist at end of June

Telstar 7 - 129 West - will be launched and operational in early 1999 - will be a standard C and Ku Bird.

Galaxy 9

350 - TVN Pay-Per-View Special Events Channel

Morelos 2

18 - delete Claro Vision - now occasional feeds

Anik E2 - Ku-Band

digital channels - Viewer's Choice on 200 - 208

now back

delete digital channels 408 and 461 and add 612 service unknown

the Canadian Digital Music Service has expanded from 901 to 966 and is no longer available.

Galaxy 7 C-Band digital

603 - Wingspan

780, 781, 782 - Access Television Network - Info-Mercials

Galaxy 7 - Ku-Band

digital -

400 - Fit TV

401 - Outdoor

600 - America's Health Network

583 - Bloomberg News

PanAmSat 5 - 58 West

some info on services that appeared briefly in the clear:

700 - Sony Entertainment Television

701 - WB - The Warner Channel

702 - Sony Entertainment Television

703 - WB - The Warner Channel

the programming on these channels is in English, but all

announcements are in Spanish. Program times were given

for Buenos Aires, Mexico City, and another location

710 - La Mega - Union Radio FM- Caracas, Venezuela

712 - Union Radio AM network - all news and commentary

also Caracas, Venezuela.

I've had satellite television for almost 15 years now -

The following were those satellite on the air in 1984---

Satcom F5 - 143W Satcom 1R 139 W Galaxy 1 - 134 W

Satcom 3R - 131 W Comstar D4 - 127 W Westar 5 -127 W

Spacenet 1 - 120 W Anik B - 109 W Anik D - 104.5 W

Westar 4 - 99 W Telstar 301 - 96 W Westar 3 - 91 W

Comstar D3 - 87 W Satcom F4 - 83 W and Westar 2 - 79 W

with a grand total of 98 full time transponders.

That's all for now - see you in 30 - 73"s

George



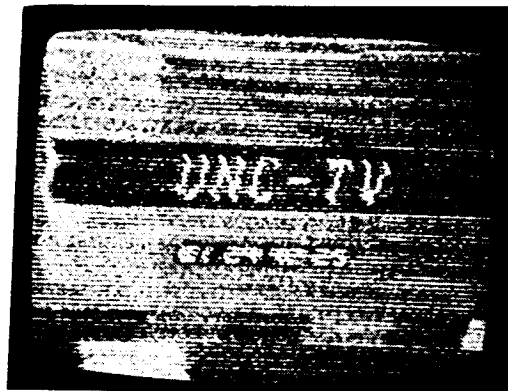
Television You Can Use
www.lifenetwork.ca

Jeff Kruszka, Editor
 5024 S. Braxton Ave.
 Baton Rouge, LA 70817
 JTKruszka@worldnet.att.net

June 1998

Well, E-skip should be in full swing by now. Hope you all are getting in on the action. First off this month are some more catches from Jeff Kadet, Macomb, IL:

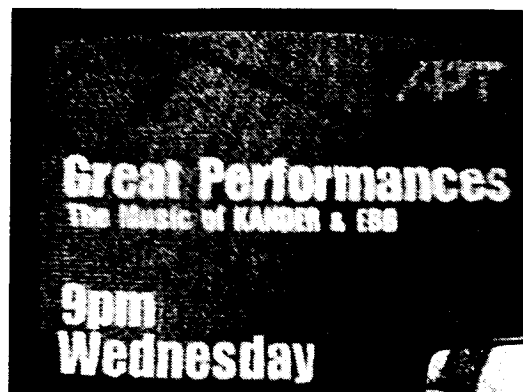
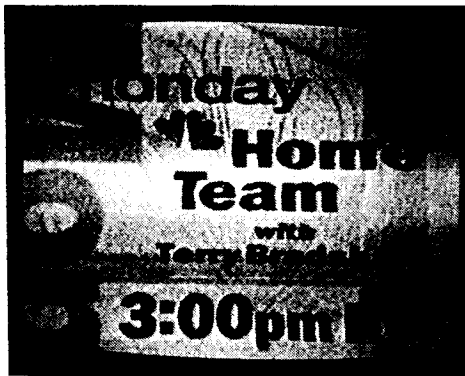
WUNF-33 Asheville, NC
 554 mi Tr seen 10/7/97
 @0020 CDT



WASV-62 Asheville, NC
 556 mi Tr seen 10/7/97
 @0020 CDT

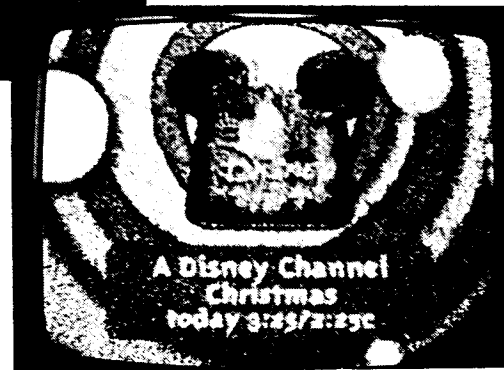


WCNC-36 Charlotte, NC
 652 mi Tr seen 10/5/97
 @2255 CDT
 "IDs as channel 6"



WHIQ-25 Huntsville, AL
 455 mi Tr seen 12/2/97
 @ 0400 CST
 "extremely rare - WEEK-25 off"

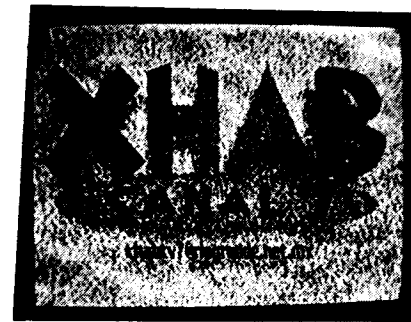
K65GE-65 Columbus, NE
 356 mi Tr seen 12/21/97
 @0430 CST



Now for some border DX from Danny Oglethorpe, Shreveport, LA:
 Equipment: Various TVs and VCRs. Winegard PR-5040 VHF @18 ft. AGL; Antennacraft P-5 chicken-sired dish w/Winegard GA-4700 @24 ft. AGL.



KGBT-4 Harlingen, TX
 491 mi Tr seen 12/9/97
 @ 0855 CT
 "The Valley's News Leader"
 (4 with a palm tree)



XHAB-7 Matamoros, TA
 503 mi Tr seen 12/9/97
 @0900 CT
 "with email address"

Qsl Corner / Logo's Run

Volume 1, Issue 1 using MS Publisher 97

1998 WTFDA



Mail to: Thomas J. Yingling, Jr., KA3TCC
221 Pinewood Road
Baltimore, MD 21222-2345
E-Mail to: KA3TCC@JUNO.COM or
KA3TCC@EROLS.COM



Reporters: Jerry M Stuart, Lawton, OK;
Bruce F. Elving, Esko, MN; Bob Seybold,
Silver Creek, NY; William Wylie, Franklin,
MA; Eric Buernerman, Hazelwood, MO;
Hank Holbrook, Dunkirk, MD

TX KIDY-TV 59 SAN ANGELO, (no address given), send prepared card, FOX KIDY TV T-shirt, key ring, & antenna ball (baseball) from Jennifer Jackson, QSL from J. K. McManon, C.E. The power listed as 2.5kw, nice lot for 32 cents, and the T-shirts fits. (Stuart)

MD WSCL-FM 89.5 SALISBURY, P.O.Box 2586, zip 21802. Letter, program guide, coverage map & cup from Buce D. Blancland, Dir. of Eng. He mentions that tower is located in Seaford, DE & has been heard in Appleton, WI; Cape Cod, MA & this makes you the farrest our station has been received. (Elving)

SC WALL-FM 93.7 WATERBORO, P.O. Box 1105, zip 29488. Letter, with 2 bumper stickers from Karl Hess, General Manager who says "Thanks for the DX report, you are definitely the farthest away listener we have heard from." (Elving)

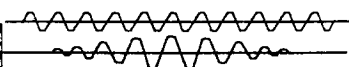
NC WUNC 91.5 CHAPEL HILL, % University of NC, zip 27599. Received an unexpected & welcome verie with note cribbled on bottom of my report as "rec. & correct," David C. Wright, CE. Also received 1992 list of pbs radio stations & bumper sticker. Also the letter was dated Dec. 27, 1995 but this reply came on Sept. 8 1997! (Elving)

WI WSFQ-FM 96.3 PESHTIGO, 413 Tenth Ave, zip 49858. Letter, bumper stickers, mug & cap from Bill Sauve, Pres. of WSFQ/WHYB/WAGN says he was enthused to hear from a "new listener, especially so far away!" (Elving)

CT WBNE-TV 59 NEW HAVEN, 8 Elm St, zip 06510. Letter, program schedule, & tons of info from Walter Mann, General Manager (Seybold)

NC WYDO-TV 14 GREENVILLE, P.O.Box 2044, zip 27836. Letter, coverage map, schedule & other info from Hamp Ferguson, General Manager. (Seybold)

24



NH WEVO-FM 89.1 CONCORD, 207 N. Main St, zip 03301-5003. Short letter from Larry L. Beavers, Dir. of Eng. who mentions being a ham and my report is there most distant as "Ah the wonders of temperature inversion," he said (which has nothing to do with skip. (Elving)

NM KANW-FM 89.1 ALBUQUERQUE, 2020 Coal St SE, zip 87110. Short note from "Your friends at KANV" saying I am the most distant listener to respond to a contest they had on the air. My prize was 2 bumper stickers. (Elving)

WI WWLC-FM 104.9 BALSAM LAKE, % P.O.Box 345, Turtle Lake, WI 54889. Letter from Tom Beschta, Owner veries by FAX, mentioning my report the most distant. (Elving)

WI WXPW-FM 91.9 WAUSAU, % 303 W. Prospect St., Rhinelander, WI 54501. WXPW 91.9 which simulcasts WXPW 91.7 Rhinelander partime with monophonic talker WLBL-FM 91.9 Wausau (which I have not dx'ed). Letter from Elmer A. Goetsch, CE wrote "You must really have a selective receiver & highly directional antenna to be able to separate WXPW at 91.9 54 watts from WXPW 91.7 100 kw!" Actually the trick was to separate WXPW from nearby WWAX 92.1 Hermantown. I used the more selective but older Magnum/Dynalab tuner instead of the fanfare fm tuner I usually use. Goetsch thinks I would have better luck receiving their 100.9 mhz translator in Ironwood, MI which is heard 50 to 80 km along US Hwy 2. "If you hear us on 100.9 please let us know." (Elving)

Note: You can now send your TV or FM QSL CARD or Letter, or TV ID LOGO by E-Mail! If you have an computer page scanner and know how to send E-Mail with attachments. Send to the KA3TCC@EROLS.COM address. For Text only, use KA3TCC@JUNO.COM 73's to later.

MS WPRL-FM 91.7 LORMAN, % 1000 ASU Dr., No. 69, zip 33096-9402. Unsigned letter from "The WPRL Family" apologized for the long delay in verifying. (Elving)
NJ WFDU-FM 89.1 TEANECK, % Farleigh Dickinson University, zip 07666. Letter from Barry Sheffield, Asst. Dir of Telecommunications. (Elving)

AL WNDA-FM 95.1 HUNTSVILLE, 2407 9th Ave, zip 35805. Letter, coverage map, 2 ink pens, 3 small magnets, 2 books mark, schedule from Michael Wilson Pawlowicz, Program Mgr. all for 32 cents! (Wyllie)

MN KJKK-FM 96.5 FERGUS FALLS, Box 724, zip 56538-0724. Letter, 3x5 glossy photo of the KJKK truck from Bud Norris, Gen. Mgr. (Wyllie)

MN KMXX-FM 94.9 ST CLOUD, P.O.Box 220, zip 56302. Letter, window static stickers from Melony McKaye, Program Dir. (Wyllie)

MI WKZC-FM 94.9 LUDINGTON, 5941 West US 10, zip 49431-2447. Letter, bumper stickers from Jason Wilder, Operations Mgr. He said the signal must have bounced off the clouds to your radio. (Wyllie)

IA KGGG-FM 94.9 DES MOINES, 3900 N Broadway, zip 50317. Send letter & bumper stickers from Rick H. Chalfant, CE. (Wyllie)

ND KFGX-FM 95.1 FARGO, No address, just zip of 58108-2966. Send letter, stickers, a pair of woman's bikini panties that read Bill keep rockin, Margette. Note: exKDDL used to be in Detroit Lakes, MN. (Wyllie)

IA KUUL-FM 103.7 DAVENPORT, 3535 E.Kimberly Rd, zip 52807. Letter from Jon Book, Eng. KBOEDE. He also signs qsl's for: KMXG, WLLR, WKBF, WHTS, WOC, KCQQ which are owned by Mississippi Valley Broadcasting. (Buernerman)

MO KMOS-TV 6 SEDALIA, % Central Missouri State University, Warrensburg, MO 64093. Verification note, bumper stickers, program guide, signed by Dan David, CE. He also signs for KCMW-FM. (Buernerman)

NB CBAT-1-6-TV 6 BON ACCORD, % CBC Radio, 250 Archibald St., P. O. Box 950, Moncton, NB E1C 8N8. Letter & qsl card signed by Jane Chartley, Audience Relations who also states that the programing originates from Fredericton. (Buernerman)

NJ WKTU-FM 103.5 JERSEY CITY, 525 Washington Blvd. 16th floor zip 07310. Letter, stickers from Josh Hadden, CE. (Holbrook)

MD WLSL-FM 96.9 CRISFIELD, P.O.Box 69, zip 21817. Letter asking me to check on their new antenna (call now WBEy-FM) & confirming my reception of WLSL-FM signed by Michael Powell, KA3SOI. They operate at reduced power of 2.8kw at 400'. If they use more power to 6kw allotted, they would have to go directional to protect WCEI-FM Easton, MD. (Elving)
VA WPTE-FM 94.9 NORFOLK, 215 Brooke Ave, zip 23519. Letter from Michael E. Settles, CE. (Holbrook)
FL WZTA-FM 94.9 MIAMI, 194 NW 187th st, zip 33169. Letter from Christopher G. Samson, CE who says "WZTA broadcasts with licensed erp 100kw, however it is interesting to note during your time of reception, we were at 40% power due to lighting damage sustained a couple days earlier. (Holbrook)

FL WNOG-FM 93.5 NAPLES, 333 8th St S., zip 33940. Letter from Peter Spalvins, CE (Holbrook)

CT WKCD-FM 107.7 MYSTIC, 12 Eoosevelt Ave, zip 06355-0027. City of license is Patwatuck. Letter from Gary Ginard, CRMC-VP/GM. Letter opens up as "To date you are the most distant, Hank." (Holbrook)

MO KSYN-FM 92.5 JOPLIN, 2510 W 20th St, zip 64803. Letter from William B. Neal (Holbrook)

NJ WRNJ-FM 107.1 HACKETTSTOWN, P.O.Box 1000, zip 07840. Letter from Lawrence J. Tighe, CE (Holbrook)

LA KJEE-FM 92.9 JENNINGS, Drawer 1248, zip 70546. Letter from Clovis L. Bailey, CE WSDKA (Holbrook)
LA WBSN-FM 89.1 NEW ORLEANS, 3939 Gentilly Blvd, zip 70126. Letter & coverage map from Wayne Michaels, Program Director. (Holbrook)

NJ WDOX-FM 93.1 WILDWOOD CREST, % 2 Oak Ave, Wenonah, NJ 08090. Send back my prepared card, sign by Joseph Dowey (I think). Don Powers, owner told me on phone, that station is fully automated. (Holbrook)

NJ WQNJ-FM 98.5 ASBURY PARK, % WJLK, P.O.Box 880, 605 Matison Ave, zip 07712. Nice letter from Phillip E. Galasso, CE who says "I am sorry for the late reply. As chief engineer of a badly understaffed radio station. I run an extremely hectic schedule. I also responsible for WJLK-FM, WQNJ, WJLK-AM & I also do some dx listening (and have done so for 28 years) and find few stations even bother to reply to reception reports anymore. (Elving)

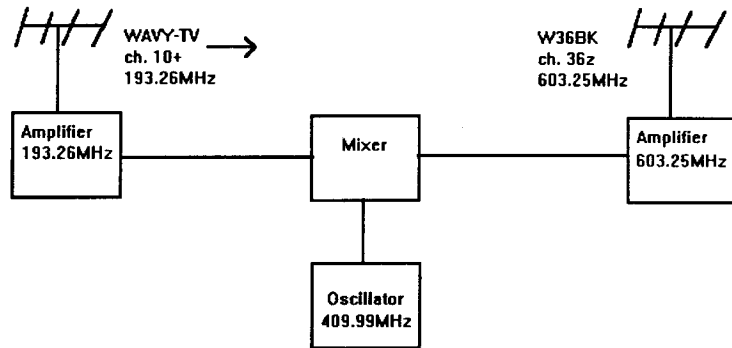
That's it for this month. See you again in 31

Translator Phantoms

Doug Smith, 1385 Old Clarksville Pike, Pleasant View TN 37146

Last year (back when we actually had tropo!), Roy Barstow reported a rather strange logging. Specifically, he saw WTVD [11] Durham, NC -- on channel 37! (for those who may be new to the club, channel 37 is reserved for radio astronomy. There are no TV stations on this channel anywhere in the world. Any station you might log on channel 37 is a rare, exotic catch!) But Roy's report is by no means the first time a WTFDxA member has logged a "phantom translator" on the "wrong" channel. There seems to be a fair bit of misunderstanding about how this happens, so this article will attempt to explain the phenomenon.

To understand a phantom translator, one must first understand how a properly-operating translator works. Translators are installed to extend the coverage area of a TV (or FM) station into an area it doesn't normally reach. To accomplish this, a receiving antenna is installed atop a hill and aimed at the station to be rebroadcast. The signal received by this antenna is amplified, moved to another channel, amplified again, and transmitted over another antenna aimed at the town to be served. For this article, we'll consider translator W36BK. This station is located at Mappsville, Virginia on the Delmarva Peninsula, roughly 100km north of Norfolk. It's licensed to pick up WAVY-TV [10] Portsmouth and rebroadcast it on channel 36.

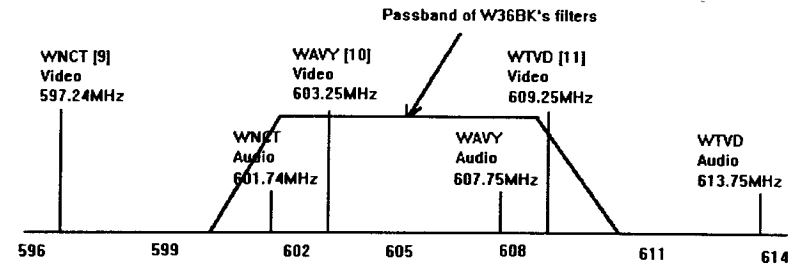


Here's a block diagram. Hopefully, the function of the antennas and amplifiers are already well-known to WTFDxA members. The purpose of the oscillator is to generate a steady, "unmodulated" signal at 409.99MHz. If you were to listen to this signal on a radio, you'd hear "dead air". The function of the mixer is best described mathematically. (don't worry, it's simple algebra!) The output of the mixer contains four signals:

- **Input #1** (the 193.26MHz WAVY-TV signal from the receiving antenna)
- **Input #2** (the 409.99MHz "dead air" signal from the oscillator)
- **The difference between the two frequencies** ($409.99 - 193.26 = 216.73\text{MHz}$)
- **The sum of the two frequencies** ($409.99 + 193.26 = 603.25\text{MHz}$)

If you look at the channel frequencies in the FCC Regulations, you see that this last frequency is channel 36, the intended output of W36BK. Filters in the mixer and amplifier circuits remove the other three signals, so that W36BK's transmissions are only on 603.25MHz. Except...

What happens if tropes are up, and WTVD (channel 11+, Durham NC) is putting in a strong signal at the receiving antenna? Now, a second signal appears at Input #1: WTVD on 199.26MHz. This signal, the 409.99MHz "dead air" signal, the difference between the two (210.73MHz), and the sum of the two (609.25MHz) all appear at the output of the mixer. The filters in the mixer and amplifier circuits will still get rid of the first three signals. (especially important since the difference frequency is in channel 13 and could cause serious interference to WVEC-TV...) But no filter is perfect, and 609.25MHz is quite close to the 603.25MHz signal that W36BK is designed to transmit. Some of this 609.25MHz signal will get amplified & transmitted. And a quick check of the FCC Regulations shows that 609.25MHz is the visual frequency for channel 37. Yes, if you live near Mappsville, (or within tropo range) you'll now receive WTVD on channel 37...



This chart shows how it happens. In a perfect world, W36BK's filters would cut off all signals outside channel 36 -- everything below 602MHz or above 608MHz. But no filter is perfect. This filter will cut off WTVD's audio signal (which is why you usually don't get audio from a phantom translator), but the video will get through. Incidentally, the color is carried on another carrier (not shown since it would clutter the chart too much!) at 612.83MHz. This signal won't get through either - if you receive WTVD on channel 37 via W36BK, the signal will be in black-and-white.

The chart also shows WNCT [9]'s audio signal being rebroadcast - if you do the math & look up the results in the Regulations, you'll find it's being transmitted on 601.73MHz, channel 35. However, chances are you won't actually hear WNCT audio on channel 35. The reason also has to do with a mixer - this time, a mixer inside your TV set.

Note that on all three channels, the difference between the video and audio signals is precisely 4.5MHz. This fact allows setmakers to use something called "intercarrier sound". The received audio and video signals are passed together through a first mixer, which brings them down to 41.25MHz (audio) and 45.75MHz (video). These signals are amplified together, and the video demodulated. As for the audio, an audio demodulator operating at 41.25MHz would be either unstable (resulting in considerable distortion) or expensive. Lower frequencies work much better. So, the same circuit that demodulates the video also serves as a mixer, changing the frequency of the audio signal for a second time.

The receiver could use a second oscillator to provide a second "dead air" signal for this mixer. But it doesn't have to. Another signal of constant frequency is present - the video signal 4.5MHz away. So the setmaker mixes the video and audio signals to provide a 4.5MHz audio signal, which is demodulated and sent to the speaker. In the "phantom" case above, the WNCT video signal at 597.23MHz doesn't get through the amplifiers. If you tune to channel 35, there is no video signal present at your TV, so there's no way for the second mix to take place, and you don't hear the WNCT audio even though it's there. Of course, we are assuming tropes are in, so maybe there's enough WYBE [35] video signal present from Philadelphia to allow the mix to happen & the WNCT audio to be heard!

It should be noted that not all translators use mixers. Many translators fully demodulate their "primary" stations to raw "baseband" audio and video, much like the Teknika tuners popular with DXers in the early 1980s. These audio and video signals are then passed to the same kind of TV transmitter used in a regular TV station. Signals on channels other than the one the translator is tuned to cannot be demodulated (at least not intelligibly), so they cannot be rebroadcast. To the best of my knowledge, all FM translators use this "baseband" method, so FM translators cannot "phantom".

DXers should also note that this "mixing" process is by no means the only way a translator can rebroadcast the wrong station. Keeping W36BK as our "sample" station, remember that tropes are up. If you're watching WAVY [10] at your home in Mappsville with a rooftop antenna, it's very possible WIS Columbia, SC - also on channel 10 - could override WAVY's signals. The same thing could easily happen at the translator. W36BK has no way of knowing what station it's receiving on channel 10 - it just knows it's receiving a channel 10 station. It will be just as effective at rebroadcasting WIS on channel 36 as it is at rebroadcasting WAVY. Midwestern DXers have frequently reported receiving WISN [12] Milwaukee over various Iowa translators after their primary station KIIN Iowa City signed off.

Probably the most exotic phantom reception happened during the "Thanksgiving Tropo Feast" in 1986, when Jeff Kadet in Illinois received WFLD [32] Chicago - on channel 37 - through WWPB [31] translator W36AB in western Maryland, 600 miles away! Exotic things can be received over "phantoming" translators. DXers need to keep their eyes - and minds - open.

W. J. Smith

Southern FM DX

John Zondlo
4009 Driftwood Circle
Yukon, OK 73099
E-mail: jpzondlo@aol.com
Deadline: 10th

June 1998

For DXers in AL, AR, AZ, CA, CO, DE, DC, FL, GA, HI, KS, KY, LA,
MD, MS, NC, NV, OK, SC, TN, TX, UT, WV and Mexico

Check out FM DX Web! [Http://members.aol.com/fmdxweb](http://members.aol.com/fmdxweb)

Doug Smith

1385 Old Clarksville Pike - Pleasant View,
TN 37146-8098

w9wi@bellsouth.net CDT

Technics ST-G50 tuner, big Radio Shack VHF-TV
antenna at 15'

5/12 Tr

0809 KMAG 99.1 AR Fort Smith, call ID 379
0809 KTCS 99.9 AR Fort Smith, local talk 435

I can't claim them for the Pleasant View log, but we do have two microstations in the Nashville area. One appears intermittently on Sundays only on 97.3 somewhere around the airport. Programming is continuous progressive rock music with no announcements. The other is a "talking billboard" at the Broadway/West End split just north of Music Row. It continuously loops the country music CD that's being advertised on the billboard. This is a very low power station, probably legal under Part 15, operating on 106.9. I'm rather surprised they didn't change frequencies when WNPL 106.7 came on the air. 73, Doug

Eric Bueneman

NOUIH - 631 Coachway Lane - Hazelwood, MO
63042-1347 - (314) 839-9751 (prepaid only) -
NOUIHEric@aol.com, EricB631@juno.com -
<http://members.aol.com/nouiheric/k-index.html>
CDT

Realistic STA-90, Archer VU-110 antenna with
Archerrotor at 33' AGL. Miles/kilometers.

5/12 Tr/Gw

0358 WTSG 90.1 IL Carlinville, legal ID, southern
Gospel, \$ 55/89
0404 W206AN 89.1 IL Carlinville, USA Radio rx, wx,
light Christian mx. ID for WYFG
89.3, mixing with WVJC, local
KCLC off 55/89
0445 WUIS 91.9 IL Springfield, also hearing
Springfield on 91.9\$, 98.7,
101.9\$, 103.7 80/129
0446 WDZQ 95.1 IL Decatur, 110/177
0446 WSOY 102.9 IL Decatur, w/KEZS 110/177
0508 WSWT 106.9 IL Peoria, local wx, ads, "Light
Rock 107," soft AC, no sign of
KTXV 140/225
0515 WMKR 94.3 IL Taylorville, local PSAs, wx,
"Light Rock 94.3," w/WRMS
70/113
0516 WBPB 93.3 IL Peoria, "Big Oldies 93.3," o,
under KNSX (x-WMXP)
140/225

28

After almost 6 years at this location, I finally hear a translator! W206AN 89.1 was a big surprise, taking out WVJC at times, with local KCLC off. The station relays WYFG 89.3 Gaffney SC with an instrumental Christian music format, and gave out a Charlotte NC address (that for WYFQ AM 930) in their promos. I remember hearing WYFG on their 89.3 frequency once while I was in Georgia, and that was with no sign of WLRH and semi-local WRFG off. From my other locations, only two other translators were heard (both are now silent), W288AW 107.5 Roswell GA (from Woodstock and Marietta GA) and K212AI 90.3 Springfield IL (from another Hazelwood QTH). W206AN is not the only new station now on the air...so is crosstown WTSG 90.1 with a southern Gospel format. So there are three types of Christian music available to listeners in Carlinville, and some competition for WIBI 91.1, the oldest station in that part of Illinois.

I also have a website up, where I not only post my own logs for FM-TV, but also for SW and AM (MW). I also have links to local radio-TV station websites, radio program websites, as well as those for various hams and DXers, and international SW broadcasters. I hope to add a Clear Channel link soon! The URL is at the top of this report. Something new could be coming to this shack....watch the top for more details! 73, Eric (NOUIH)

John Zondlo
4009 Driftwood Circle
Yukon, OK 73099
jzondlo@aol.com
CDT

Akai AT-VO4 tuner (modified with 2 150 kHz IF
filters), Channel Master Stereo Probe 9 antenna.
All new.

5/12 Tr

0840 KHMV 96.5 TX Houston, "Mix 96.5"
0848 KTCX 102.5 TX Beaumont, "The Touch"
0852 KXGJ 101.7 TX Bay City, "Pure Country"
5/13 Tr
0235 KVRW 97.7 TX Rusk, "Oldies 97"
0241 KQIS 102.1 LA Basile, r. ment of Lafayette
0300 KORI 104.7 LA Mansfield, k, ID
0303 XHPAG 105.3 NL Los Ramones, Monterrey ment,
"Papaguayos FM"
0341 XHMZI 91.1 CL Muzquiz, "La Grande de
Coahuila"
0355 KTDR 96.3 TX Del Rio, r, calls

Finally! My first Mexican FMs via tropo. Great
opening....Fernando Garcia had it going the other
(continued on page 30...)

NORTHERN FM-DX

GREG CONIGLIO
90 SLATE CREEK DR. APT #3
CHEEKTOWAGA, NEW YORK 14227

e-mail: coniglio@localnet.com

For DXers in: MA, NH, VT, CT, MA, RI, NY, PA, NJ, OH, MI, IN, IL, WI, MN, IA, NE, SD, ND, MT, WY, ID, WA, OR, AK, Canada
JUNE 1998 DEADLINE: The 5th LOG CUTOFF: 3 mos. from postmark

Still not much going on, although initial reports suggest some widespread tropo openings in mid-May. Hopefully we'll read more about this in the July VUD. I would like to thank Roy Barstow, who has lent me almost a complete collection of VUDs from 1972-1981. This way, my skip study can be extended backwards that far. I'm currently going through the VUDs, recording each opening in those years. Hopefully this won't take too long, but I wanted to thank Roy for his volunteer effort! Also, for those of you who contribute to this column via e-mail, I have created a small sample on the best way to submit reports in this fashion, which is available on request. I have received many questions on this topic. Submissions that are as close to the correct format as possible make the column much easier to do! Also, to those of you reporting DX to the AMFMTVDX server, don't forget to still send your reports to me for this column! Please send them to me directly, so I know I have your permission, and once a month is preferable to several reports that have to be appended together. Thanks to all of you for your contributions! ...

DAVE NIEMAN - HO STA GEH ROAD - ROCK CITY NEW YORK 14749

Equipment: Carver TX-11 tuner; IF filter modified. Channel Master model 4408 (Stereo Probe 9) at 55 feet AGL on a Alliance HD-73 rotor. Winegard FT-7600 variable FM trap for 95.7MHz, Belden RG-11/u coax feed.

New loggings are underlined. { } Call change

MARCH 1998 DX

8 Groundwave & tropo
0900 W231AH 94.1 PA Bradford, g\$,
WCID 89.1 ID 10
1415 W246AL 97.1 PA Wellsboro, "KC 101",
k mono, WDKC 101.5 63
28 tropo
1617 WPXZ 104.1 PA Punxsutawney, call, r\$,
ex. 105.5, over WHTT Buffalo 77

MARCH 1998 DX

29 tropo
1500 WBUS 93.7 PA Boalsburg, call, o\$,
over WBLK Depew 94
APRIL 1998 DX
4 tropo
0934 CBLA 99.1 ON Toronto, call, m\$,
testing with music 121
1000 {WZNV} 105.5 WV Bethlehem, ID+ "The
Zone", r\$, ex. WRIR 178

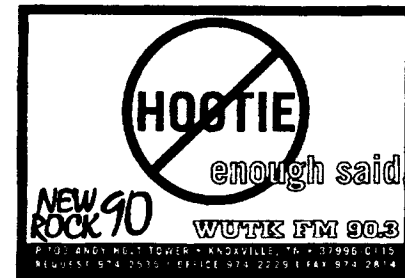
Dave

DANIEL OETTING - 4106 ELAND DOWNE - PHOENIXVILLE, PENNSYLVANIA

Equipment: Harmon-Kardon Citation 23, Archer 10 element Yagi at 18' AGL, & 0-10-20db Radio Shack Amp.

FEBRUARY 1998 DX

28 GW
0130 WZZP 107.3 NJ Atlantic City, \$ equip tests
& rock
MARCH 1998 DX
24 GW
1550 W278AK 103.5 PA Aston, Xltr of
WXHL 89.1 DE
25 GW
2130 Pirate 95.3 ?? Playing old WOGL remote
broadcast. Off by 2200.
28 TrS
1050 WSDL 90.7 MD Ocean City, c // to WSCL.



I got a new job as operations manager of WXHL 89.1 DE. We will be putting more translators on soon. 73's Dan O

NORTHERN FM DX

JUNE 1998

MIKE BUGAJ - 69 SHERMAN ROAD - ENFIELD, CONNECTICUT 06082

Equipment: Carver TX-11 and Sherwood rx, (both IF modified), Probe 9 at 30 feet with rotor. New are underlined>.

MAY 1998 DX

13 Tr
 2045 WMCM 103.3 ME Rockland, Real Country
 2045 WQSS 102.5 ME Camden, Coast 102.5, Red Sox BB
 2051 CFRQ 104.3 NS Halifax, Classic rock
 2110 CICO 100.1 NS Halifax, C-100 rock
 2110 CBH 102.7 NS Halifax, CBC, went into nx at ten w/no ID
 2115 CBHL 97.1 NS Liverpool, CBC Wx
 2128 W28Z2105.3 MA unknown, brand new WPVQ93.9 xltr This one is directly north of me.
 2148 CBAF-5 92.3 NS Halifax, French
 2155 CBHY 92.1 NS Yarmouth
 2010 WWFX 104.7 ME Belfast, new cntry 104.7 the Bear
 2050 CJLS 96.3 NS Barrington, Goldmine (oldies)
 2251 CJLS-1 93.5 NS New Tusket, Goldmine
 2352 CBAF9 107.3 NS Yarmouth French // 92.3



MAY 14 Tr

0026 CHEX 101.9 NS Halifax, Hot Country 101.9
 0641 CBHM 106.5 NS Middleton, sports, mono // 97.1, 92.1
 0700 CIEZ 96.5 NS Halifax ID with local WTIC phased out
 0715 WXEZ 94.1 VA Yorkton, w/antenna going NEast
 1800 All AtlanticCity super strong
 1805 WRSF 105.7 NC Columbia, Dixie 105.7
 2019 WOCQ 103.9 MD Berlin, OC 104
 2034 WYOD 99.1 NC Manteo, Best New Mx around.alternative
 2045 uniD 97.1 smooth jazz...is this WLFX MD? (yes, now WQJZ-grc)
 2101 WESM 91.3 MD Princess Anne
 2230 WKJA 101.1 NC Bellhaven, oldies
 2233 WLGP 100.3 NC Harkers Island, g
 2234 WCMS 100.5 VA Norfolk, thru WRCH, which was phased out
 2238 WCXL 104.1 NC Kill Devil Hills XL 104 after 3 years of trying, WMRQ phased
 2243 WIKS 101.9 NC New Bern, Kiss 102
 2331 WRHT 96.3 NC Moorhead City, Hot FM
 16 Tr
 0004 WERX 102.5 NC Edenton, the Shark
 0006 WNBR 94.1 NC Oriental
 0700 WRSF105.7 still there strong

Southern FM DX (...continued from page 28)

Zondlo continued way, seeing channels 43 & 62 here and other stuff all the way up into Iowa.

From the Editor



Looks like the season is off and running. Keep up with what's happening by joining your fellow club members in the WTFDA chat room (chat channel, to be technical about it). It's open Tuesday and Friday nights. Contact Mailbox editor Mike Bugaj for details. And drop me a line and let me know what you've been hearing, either by e-mail or snail mail. See y'all next month!



WESTERN TV-DX

June 1998

Victor Frank
 12450 Skyline Blvd.
 Woodside, CA 94062-4554
 e-mail frank@horizon.sri.com
 (650)851-7031

Dennis Park Smith, 3703 Dixon Street, Santa Barbara, CA 93105-2419 (805)687-7803

This report is for April 1998.

April continued the pattern of March, for occasional southern CA coastal tropo activity on TV & FM up to 200 mi/320 km, though at times a trifle better, particularly toward the end of April with warmer inland (away from ocean) temperatures and somewhat more pronounced tropo ducting, though not yet up to the 'very good' until Apr. 30) or 'excellent' levels. During storms/unsettled conditions, (rain or wind), there is no tropo DX. Between storms, the air is stable and tends to form into layers, contributing toward tropo ducting (and also toward smog accumulation).

Apr. 1-9: No tropo (continuing since Mar. 25)
 Apr. 10: Poor (rain Apr. 11 & 13)
 Apr. 11-16: No tropo (now becoming Spring-like).
 Apr. 17: Poor
 Apr. 18: Poor and improving
 Apr. 19: Fair
 Apr. 20-21: Good (warmer inland, up to 90F/40C)
 Apr. 22: Good and deteriorating
 Apr. 23: Fair to poor (cooling inland)
 Apr. 24: Very poor, deteriorating (windy)
 Apr. 25: No tropo (windy)
 Apr. 26: Very poor, improving to poor (warming again)
 Apr. 27: Poor, improving to fair
 Apr. 28: Fair+, improving to good
 Apr. 29: Good+, improving
 Apr. 30: Very good, deteriorating to very poor
 May 1: Very poor (approaching weather front, cooling)

Not DX, but on Apr. 23, did you see Venus, Jupiter, and crescent moon under them before sunrise? Some called radio stations wondering if they were UFOs. It wasn't UFOs; it was God's Happy Face! Best of DX to all. Dennis

Jeff Kruszka, 5024 S. Braxton Ave., Baton Rouge, LA 70817

March 1998
 16tr 0722 KTBS 3LA see note #1 205
 23tr 2216 KVEO 23TX ID 500
 2236 XHAB 7TA 505
 24tr 0542 KXAN 36TX NBC 395
 KVDA 60TX 445
 1822 KEDT 16TX 425
 1851 XHAB 7TA 505
 2014 XHFOX 17TA 535
 25tr 0700 KLRT 16AR 305
 0716 KFWD 52TX 395
 0716 KOCB 34OK 505
 0728 KTXA 21TX "UPN 21" 395

0730 KYPX 42AR InfoMall ID 300
 0733 KVTH 26AR "Life Today" //25 295
 0737 uniD 60 Fox to NW? 385
 2207 WJSU 40AL 365
 29tr 0100 KERA 13TX ID

April 1998
 23Es 1716 uniDs 4,5 SS CDT
 24tr 2355 uniD 17 see note 2
 25tr 0000 KXAN 36TX 395
 0030 K52EV 52LA WNTZ-48 ID 130
 Es 1152 uniDs 3-5 SS
 1247 XHG 4JAL ID 1020
 26Es 1327 uniDs 3-5 SS
 1857 XHG 4JAL 1020

May 1998
 01tr 0707 KEDT 16TX "Super Tropo" CDT
 2052 XHAB 7TA 425
 2055 XHMTA 11TA TV Azteca-7 500
 XHREY 12TA TV Azteca-13 535
 2109 XHICI 13VER unid 13 SS, weaker, further south live on the net!
 2158 XHMOY 22NL IDed per Fernando, 650
 2207 K30FF 30TX Preacher, Harlingen address 495
 2215 XHTPZ 24TA ID //22 715
 2226 XHCVI 26TA XEQ//24 685
 2230 KAJN-LP 40 LA ID 55
 2307 K52FR 52TX IDed per Fernando 495
 02tr 0001 WWWSB 40FL Sarasota ad 555
 0111 KIII 3TX ID, KATC-3 signed off 420
 0911 WINK 11FL ID 625
 0922 WFTX 36FL 620
 2233 XHFOX 17TA 535
 KEDT 16TX 425
 2237 uniD 34 SS Monterrey?
 2244 XHREY 12TA 535
 2322 XHAB 7TA 505
 03tr 0002 W52BC 52AL TBN 280
 0005 WSWSi 66AL Praise TV, WB symbol
 0149 uniD 22 PSN, shopping to WNW

Note 1 - Audio only, over strong KATC Lafayette. This has been on my most wanted list since I moved here! KATC is very difficult to override in tropo conditons, but not E-skip.

Note 2 - Audio heard, pop songs such as "Purple Rain", "Give me one reason" from KZBL Natchitoches? Suspect new LPTV in Natchitoches.

An awesome super tropo opening on May 1-3. I don't think I've seen high band VHF tropo from Mexico since 1993! Fernando helped me ID some stuff LIVE on the DX chatroom (including new semi-local KAJN-LP, can you believe it?) To bad I didn't have more stamina like Fernando, or I might have

Western TV DX *J. Kruszka's report concludes*

logged more stations. Got some stuff on tape, so hope to have some photos in a future edition of my column

Mike Cherry, VE7SKA, Box 631 Ganges PO, Salt Spring Is. BC V8K 2W2 CANADA

April 1998 UTC
30Es 0030 KCBS 2CA (L.A.) 2min opening

May 1998
03 Au 0059 CFRN 3AB 50°
0258 CFCN 4AB 55°
AuEs 0436 CBWFT 3MB 80° CBC French
0458 CKBI 5SK

William Eckberg, 1032 Sterling Rd., Dixon, IL 61021-9355

February 1998 CST
06tr 0625 KSAX 42MN 404
0700 WOAC 67OH 417
0705 CBLN4 45ON 422
08tr 0055 WOAC 67OH 417
12tr 1230 KXNE 19NE 402
KYNE 29NE 464
2125 K51EP 51IA Iowa Falls A&E? 201
2125 K55FD 53IA Iowa Falls Sports Net 201

April 1998 CDT
08Es 1140 WESH 2FL 983
1150 WPBT 2FL 1229
21Es 2000 WPBT 2FL 1229

Pat Dyer, WA5IYX, 5315 Silvertip Drive, San Antonio, TX 78228-2744 pjdyer3@juno.com

April 1998 UTC
23Es 2100 unID 2-4 s/se -2130
2150 unIDs through 104.1 MHz C. America/Mexico through 2300, @2219 50 MHz open to Argentina
24Es 0030 unID 2 sw
0100 unID 2.3 ne
0300 unID 2-4 w
0400 unID 2-4 s/sw fadeout 0425
25Es 1613 MUF to 103.9 MHz, Mexico/Belize
26Es 2114 XHBC 3BCN Mexicali
2134 KTVK 3AZ Phoenix
2139 XETV 6BCN Tijuana
2148 to 0012 monitoring FM, lingering TV to 0200
30Es 1839 KEYT 3CA Santa Barbara
1858 KVBC 3NV Las Vegas
1831 monitoring FM, CA til 1937

May 1998
01Es 1614 WDTN 2OH Dayton
1629 WSIL 3IL Harrisburg
1633 WTWO 2IN Terre Haute
1654 KTVI 2MO St. Louis
1727 WAVE- 3KY Louisville xmtr in IN
1729 KDKA- 2PA Pittsburgh
1815 WEDU 3FL Tampa
02Es 0148 KGAN 2IA Cedar Rapids
03tr 0609 WTVT 13FL Tampa 997
0727 WTTA 38FL Tampa 996

0747 WNOL 38LA New Orleans 520
0805 KFDM 6TX Beaumont 281
0815 WTOG 44FL St. Petersburg 996
0859 WVUE 8LA New Orleans 520

Several of these (tropo) were identified by matching their programming to the schedules shown on several various Web sites.

Danny Oglethorpe, P.O. Box 6688, Shreveport, LA 71136-6688

Equipment: VHF (Es and tr) Zenith System 3 19" TV with Sanyo VHF-5428 VCR, Winegard CA 5254 VHF at 18 feet AGL, RG-6, CM 9510A rotor; VHF: Sanyo 19" TV with JVC HR-1400U VCR, Antennacraft P-5 chicken-wired dish with Winegard GA-4700 preamp at 25 feet AGL to feedpoint, RG-6, Archerotor B; VHF (Es): Goldstar GHV-1280M VCR, Antennacraft Y10-2-6 10 element low-band Yagi at 11 feet AGL, RG-6, CM 9510A rotor. FasTrap trap for channel 3.

The following March 11 report was left out of my last report (by me):

March 1998 UTC
11Es 1800 WRC 4
WTTG 5
WMAR 2
WSJK 2

April 1998 UTC
02tr 1235 KGNS 8TX 481
XHBR 11TA XEW 483
KVTV 13TX Rare catch here 481
1300 San Antonio 4, 5, 35 347
1340 WTOG 11MS 296
03tr 1250 KAIT 8AR K-8 295
06tr 0005 Valley 7, 9, 23
0025 San Antonio 5, 9 347
07tr 1450 San Antonio 4, 5 347
Es 2320 WPBT 2FL 939
08Es 0130 unIDs 2 Canal 13, XEW
XHGC 4JAL 1003
tr 1515 San Antonio 4, 5, 9 347
13tr 0130 XERV 9TA 513
14tr 1305 KSWO 7OK 309
1430 Oklahoma City 4, 5, 9, 13 303
15tr 0135 KENS 5TX 347
1300 Oklahoma City 4, 5 303
1500 KMOL 4TX 347
16tr 0530 Valley 4, 5, 7, 9, 17, 23 491-513
Corpus Christi 6 (floating), 10, 16 385
0605 San Antonio 4, 5, 9, 29, 41 347
0810 XHBR 11TA 483
1435 Biloxi 13, 19 319
19Es 0235 unIDs 2, 4, 5 XEW, others
22Es 2257 unIDs 2, 4, 5 XEW, XHGC-5 TV7
2320 Cuba 2
23Es 0020 XHFM 2VER Telever 950
0030 YSR 2EI Salvador "Tele 2" 1324
2120 unIDs 2, 4, 5 XEW, TV Azteca
2140 XHFM 2VER Telever 950
2300 XHAF 2GUER ID supered 2316 1142
24Es 0245 XHFM 2 back
24Es 0245 XEWt 2DF
XHTV 4DF Central 4 958

Western TV DX *D. Oglethorpe's report cont'd*

0255 XHGCt 5DF
unID 6 Canal 13 floating
24 tr 1330 San Antonio 4, 5, 9, 29, 35, 41 347
1340 Laredo, TX 8, 13 481
1345 Corpus Christi 6 (floating) 10, 16, 28 385
Valley 17, 23, 41, 48 491-513
25tr 0330 Some of same stations as on the 24th
Es 1430 unIDs 2, 4, 5 XEW, XHGC, TV Azteca
1540 unIDs 3 (XEW floating), 6 (Canal 13 floating)
1618 XHAI 5 VER ID supered over XHGC 900
1633 XEWt 2DF
XHTV 4DF 958
XHGCt 5DF
1700 unID 4VER
1800 XHG 4JAL 1003
26 Es 2125 unIDs 2, 4, 5 TV Azteca, Televisa
2315 XHG 4JAL 1003
XHTV 4DF 958
XH?? 5JAL Guadalajara 1003
27Es 0020 unID 6 TV7 floating

Fernando Garcia, San Salvador 415, Rincon de la Sierra, 67181 Cd Guadalupe, NL, MEXICO

Equipment:

Sony KV-27EXR15, Screened CM 7' dish 85', RG 11, UA900 amp. Sony KV-13TR27, CM 1110 30', CM 8 bay UHF array 60'.

1800' ASL, No re-logs in the same month, only tropo 500+ miles.

April 1 CST/CDT
0430 KLPB 24 LA Lafayette 567
0700 KADN 15 LA Lafayette 586
2030 WNOL 38 LA New Orleans 694
WLAE 32 LA New Orleans 694
2200 K40DZ 40 LA Lafayette 586
Religious, area ments.
WVLA 33 LA Baton Rouge 633
WLPB 27 LA Baton Rouge 638
KVHP 29 LA Lake Charles 530
2230 K59FQ 59 TX Victoria Univision 294
KLTL 18 LA Lake Charles 548
K21DM 21 LA Lafayette 592
2345 KLAX 31 LA Alexandria 618
April 2
0230 KDTX 58 TX Dallas 518
KFWD 52 TX Fort Worth 522
KXTX 39 TX Dallas 518
KUVN-LP 31 TX Fort Worth 521
0245 KETK 56 TX Jacksonville 532
KFXK 51 TX Longview 557
KINZ 68 TX Arlington 518
KHSX 49 TX Irving 518
KDFI 27 TX Dallas 518
Gulf DX dead at this time
0530 K53EN 53 TX Waco 430
TBN, strong KXXV-25 and KWKT-44
0555 K53DS1 53 OK Lawton Shop, 6AM FOX
KLDI 55 TX Lake Dallas 544
0615 KMPX 29 TX Decatur 537
0630 KTLC 43 OK Oklahoma City 706
April 4
2030 WBHS 50 FL Tampa 1116

WTTA 38 FL St. Petersburg 1116
2045 WWWWB32 FL Lakeland 1135
2200 WWSB 40 FL Sarasota 1108
2215 WFTS 28 FL Tampa 1116
WTOG 44 FL St. Petersburg 1116
WUSF 16 FL Tampa 1116
2230 WFTX 36 FL Cape Coral 1142
WGCU 30 FL Fort Myers 1144
WBBH 20 FL Fort Myers 1144
W56CN56 FL Venice 1106
WXPX 66 FL Bradenton 1115
2300 WTVK 46 FL Naples 1153
WXEL 42 FL West Palm Beach 1238
WFLX 29 FL West Palm Beach 1238
WOPX 56 FL Melbourne 1189
WZVN 26 FL Naples 1153
2315 WRMD-LP 57 FL Tampa 1104
April 5 Transition to CDT
0430 WHFT 45 FL Miami 1244
WSCV 51 FL Fort Lauderdale 1242
WBFS 33 FL Miami 1242
WDZL 39 FL Miami 1243
WYHS 69 FL Hollywood 1242
central Florida gone
0445 WPMI 15 AL Mobile 838
New Orleans, LA
WGMB 44 LA Baton Rouge 633
WPAN 53 FL Fort Walton B. 869
0545 W58BU58 FL Hallandale 1243
WLTV 23 FL Miami 1242
0645 WIMP-LP 25 FL Miami 1244
0630 WJAN-LP 41 FL Miami 1230
0715 W24AA 24 FL Fort Myers 1128
0730 Lafayette, LA
0745 WPXM 35 FL Miami 1237
WGNO 26 LA New Orleans 694
WCCL 49 LA New Orleans 688
1030 Jacksonville, TX
2215 KMSS 33 LA Shreveport 615
2230 Longview, TX
Lake Charles, LA
April 6
0015 Cape Coral-Fort Myers, FL
Lafayette-New Orleans, LA
0515 KDAF 33 TX Dallas 518
KTXA 21 TX Fort Worth 518
0530 Shreveport-Alexandria-Baton Rouge, LA
0545 WUPL 54 LA Slidell 705
0600 KLNLM-LP 42 TX Lufkin 520
A1, over KEYE
0645 WGBC 30 MS Meridian 834
0700 WDBD 40 MS Jackson 754
WAPT 16 MS Jackson 754
KARD 14 LA West Monroe 659
0715 KLPA 25 LA Alexandria 619
2100 St. Petersburg-Tampa, FL
April 7
0600 DFW, TX
0615 Lafayette, LA-Mobile, AL
WFSG 56 FL Panama City 929
2130 WCFT 33 AL Tuscaloosa 924
Meridian, MS
Rare opening not more DX in.
April 8
0130 Lafayette, LA-Jackson, MS
0145 Baton Rouge-New Orleans, LA
0500 WMAU 17 MS Bude 697
W36AC 36 MS Mccomb 710

Western TV DX *F. Garcia's report continues*

W58BO58 MS Natchez 670
 WNTZ 48 MS Natchez 670
 WZDX 54 AL Huntsville 1025
 0545 K69HD 69 LA Church Point 586
 K46DG 46 LA Lafayette 587
 K56DR 56 LA Baton Rouge 633
 WMAH 19 MS Biloxi 770
 WIIQ 41 AL Demopolis 877
 WEIQ 42 AL Mobile 825
 0600 K59DG 59 LA New Orleans 688
 WXXV 25 MS Gulfport 764
 0615 K55HA 55 LA New Iberia 596
 0630 WATL 36 GA Atlanta 1104
 WHSG 63 GA Monroe 1119
 wx maps shows clouds covering from LA to GA
 it's rare this DX go through it.

April 10
 0710 Miami, FL
 0725 signals are dead
 0730 had to leave
 2100 Miami-Naples, FL
 2230 Lafayette, LA
 2245 W21AX 21 FL Miami 1237
 Calls, SS-EE advs.
 2300 unid ch 52 Shop at Home, Florida hdn
 Noted WBFS-33 Miami with SS SAP, not
 translation of current pr
 2330 XHST 13 YU Merida 780
 sign off at 00:30 close to snow free
 XHDH 11 YU Merida 780
 2345 South Florida gone
 April 11
 0000 XHTP 9 YU Merida 780
 0015 XHMEY7 YU Merida 780
 0700 XHCCU13 QR Cancun 897
 new Mexican slate via tropo and farthest tropo
 from Mexico slogans: TVCUN, Tu Canal, La Imagen
 del Caribe Opening was good until 9:30
 2045 Lafayette, LA
 2130 New Orleans, LA
 2145 Baton Rouge, LA
 2200 Alexandria, LA
 K65FV 65 LA Crowley 572
 2215 Jacksonville, TX
 2230 K66FI 66 LA Opelousas 599
 KLAFLP 62 LA Opelousas 600
 2300 DFW, TX
 April 12
 0215 KXXV-25 Barometer 30.08, Temp. 62, humidity 86%
 0430 K65CE 65 LA Shreveport 615
 0445 KASN 38 AR Pine Bluff 772
 K30EA 30 TX Texarkana 651
 0500 KVTH 26 AR Hot Springs 739
 KTSS-LP155 AR Hope McDonald's adv.
 KYPX 42 AR Little Rock 803
 0530 KLRT 16 AR Little Rock 782
 KTPN-LP 48 TX Tyler Test pattern, color 552
 0545 KWHB 47 OK Tulsa 765
 KWMJ 53 OK Tulsa 766
 KTFO 41 OK Tulsa 766
 0700 KLTS 24 LA Shreveport 616
 K52DX 52 TX Texarkana 651
 0930 KSHV 45 LA Shreveport 616
 1130 Lafayette-New Orleans, LA
 1930 Lafayette, LA-Panama City, FL
 2045 Tampa, FL

2115 WFOA 32 AL Montgomery 928
 2145 Fort Myers, FL
 April 13
 0015 WMPV 21 AL Mobile 842
 WHBR 33 FL Pensacola 838
 WLTZ 38 GA Columbus 1036
 0030 WDHN 18 AL Dothan 982
 W41BN41 AL Dothan 980
 WJSU 40 AL Anniston 992
 0045 WCOV 20 AL Montgomery 958
 WTTO 21 AL Homewood 969
 WFXL 31 GA Albany 1066
 WMDN 24 MS Meridian 834
 WIAT 42 AL Birmingham 969
 unid ch 55 Shop at Home
 WSWS 66 AL Opelika 1023
 0100 WABM 68 AL Birmingham 966
 WTJP 60 AL Gadsden 998
 KWBJ-LP 39 LA Morgan City 618
 WBMA-LP 58 AL Birmingham 963
 w/WCFT-33, color

Jackson, MS
 W38BU38 AL Moody 988
 A1, WNOL and WLTZ off

0115 W49AY 49 AL Birmingham 969
 W63BK63 MS Meridian 834
 WAAY 31 AL Huntsville 1028
 unid 47 w/Worship, W47BS, Talladega, AL?
 W51BY 51 AL Birmingham 966
 0130 W46BU46 AL Tuscaloosa 917
 TBN, not Corpus Christi

WSRE 23 FL Pensacola 857
 WUPA 69 GA Atlanta 1100
 WAFF 48 AL Huntsville 1027
 W52BJ 52 AL Cullman 992
 0200 W43BF 43 MS Columbus 891
 WPGA 58 GA Perry 1115
 0215 WPBA 30 GA Atlanta 1103
 0230 WPKH 44 AL Gadsden 1014
 WGNX 46 GA Atlanta 1104
 unid ch 31 with ANC

0245 WGNM 64 GA Macon 1115
 WHNT 19 AL Huntsville 1028
 WAXN 64 NC Kannapolis 1333
 WTBC-LP 65 FL Tallahassee 1025
 WTXL 27 FL Tallahassee 1031
 0300 WPGX 28 FL Panama City 952
 WCGT-LP 16 GA Columbus 1027
 A1, color, WAPT off

WTWC 40 FL Tallahassee 1030
 WSB-DT1 39 GA Atlanta
 Noise on video, no audio
 Atlanta's 17, 30, 36, 46, 69 in with good signal
 WAXC-LP 64 AL Alexander city 995

0330 W29AO29 AL Anniston 1019
 0345 WTBS 17 GA Atlanta 1101
 0400 WVTM 13 AL Birmingham 969
 WKRG 5 AL Mobile 829
 WXIA 11 GA Atlanta 1103
 0415 WPXA 14 GA Rome 1105
 WJSP 28 GA Columbus 1057
 WMGT 41 GA Macon 1115
 0430 WXTX 54 GA Columbus 1037
 K49DE 49 LA New Iberia 596
 0500 unid chs 3, 12 ANC
 0515 WHIQ 25 AL Huntsville 1028
 WFIQ 36 AL Florence 964
 WAIQ 26 AL Montgomery 959

Western TV DX *F. Garcia's report concludes*

0530 WFLI 53 TN Cleveland 1110
 0700 mostly dead
 April 14
 0430 DFW, TX
 Lafayette, LA, Panama City, FL
 0500 WHNO 20 LA New Orleans 688
 0545 WTEV 47 FL Jacksonville 1179
 WJEB 59 FL Jacksonville 1180
 0700 Cape Coral, FL
 0715 WJTC 44 FL Pensacola 842
 KSBI 52 OK Oklahoma City 692
 Tulsa, OK
 0730 Had to leave
 2200 northeast, TX
 April 15
 0200 Shreveport, LA
 0515 DFW, TX
 Little Rock, AR
 0530 New Orleans, LA-Panama City, FL
 0545 Oklahoma City-Tulsa OK
 0700 KOKI 23 OK Tulsa 766
 0715 Tampa, FL
 Tallahassee, FL
 2045 Merida, YU
 2215 Albany, GA
 April 16
 0145 Lake Charles-New Orleans, LA
 0200 Tampa, Naples, Miami, West Palm Beach, FL
 0530 Lafayette, LA-Panama City, FL
 0700 Merida-Cancun
 April 17
 0530 Fort Myers, Naples, West Palm Beach, Miami, FL
 2145 Tampa, FL
 April 19
 0500 Lake Charles-New Orleans, LA
 April 20
 0745 DFW, TX
 2130 Tampa-Cape Coral, FL
 April 21
 0300 Lafayette-New Orleans, LA
 0800 Lake Charles, LA
 1000 Tampa, FL
 April 23
 0700 Lafayette, LA
 April 24
 0515 Southwest LA
 0530 DFW, TX
 KVUE-24, Temp. 57, humidity 90%, barometer 30.02R
 0545 Baton Rouge, LA
 2200 Lake Charles-Baton Rouge
 April 25
 0100 Jacksonville, TX-Shreveport, LA
 0430 Little Rock, AR
 DFW, TX
 0445 Lafayette, LA-Pensacola, FL
 2030 Tampa, FL
 stay only 15 minutes in-out
 April 26
 0345 Lake Charles-New Orleans, LA
 0630 DFW, TX
 0645 Atlanta, GA
 0715 Lafayette-New Orleans, LA
 0730 Columbus, GA
 2100 New Orleans back

April 27
 0015 Lafayette-New Orleans, LA
 0030 Mobile, AL
 K30EM 30 LA Houma 644
 0530 Baton Rouge, LA-Jackson, MS
 0600 Fort Walton Beach, FL
 April 28
 0400 Lake Charles, LA
 April 30
 0530 Lafayette-Lake Charles, LA

We enjoyed the visit of Jeff Kruszka April 18-21.
 He was here in the period of best 60 days (March 15
 to May 15) of year for long haul tropo openings, we
 did not have massive 1000+ miles tropo but we had at
 least two Tampa area ID's on April 20 and 21.

Who will be next coming to Monterrey?

This month is the best ever with up to 15 days
 with tropo opening to 1100+ miles. April 12th marked
 the 200th day with opening to 1000 miles since first
 opening on March 20, 1992.

73's Fernando

Postscript

Your conductor just got a TV adapter for his
 Icom R7100 from a party in New Zealand. After
 replacing the 5.5 MHz ceramic filters with 4.5 MHz
 ones, he is now able to get pix and sound at the same
 tuning. As far as low-VHF-band TV is concerned,
 however, it is a disappointment as it has less rejection
 of unwanted channel 2, 4, and 5 components than
 most of the TV sets he has, and they are pretty bad.

Douglas Smith W9WI/4 e-mailed some thoughts
 on our last Postscripts that I would like to share with
 you, as I have not seen them in VUD before.

The WTFDXA doesn't have any firm standards on
 what one must see/hear to count a TV logging. One
 simply needs to be reasonably certain they received the
 station they're claiming.

Obviously [the call letters on the screen] is the most
 desirable type of identification. Unfortunately, stations in
 the U.S. are only required to use their call letters on the
 hour--and that ID may be either audio or video. You don't
 need both. In other countries, you may not even need to
 ID that often--in Canada, the rules are once a "day". Even
 if you see call letters, you need to use your judgment. As
 you mention, often the same programming is carried on
 multiple stations, which means you might very well see
 call letters on the "wrong" channel. This requires a bit of
 detective work (and is a very good reason to belong to
 WTFDXA: you can enlist the aid of other members in
 figuring out what you really saw). In some cases, you
 might not ever be 100% sure of what you really saw;
 what happens if two stations on the same channel operate
 100% in parallel? (example: in Nebraska, you could see
 KRNE calls on channel 12 but actually be watching
 KUON. KRNE is a satellite of KUON.).

(To be continued)

EASTERN TV DX

June, 1998

Russell Miller
 HC 61, Box 86B
 N. Amity, ME 04471-9622
 email address - estvdx@ainop.com

LOCAL TIME UNLESS OTHERWISE NOTED

Roy Barstow P. O. Box 2488, Teaticket, MA 02536

March, 1998

25 Ms 0549	WYFF	4 SC	787
Tr 2100	WYDO	14 NC Plus E.VA.	562
26 Ms 0210	WUNC	4 NC	607
30 Ms 0425	WCIV	4 SC	778
2323	WOAY	4 WV Lottery	613

April, 1998

04 Ms 0510	WCIA	3 IL	936
0610	WSIL	3 IL	1007
0649	WAVE	3 KY	834
07 Tr PM	15, 27, 33 E. VA. Plus		
	W19BM	19 VA Box	450
	W35BH	35 VA	450
	W24BI	24 VA TBN	450
	WQAV	34 NJ	240
	PSN NET. Selling		
	W45BG	45 VA	456
	W62CN	62 VA	440
	W40AH	40 VA	440
	W18BS	18 VA	440
	W36BK	36 VA	400
	WRLH	35 VA	471
	W25, W41, W44, W60, Onan. VA		415
09 Ms 1609	WBTB	3 NC	715
10 Ms 0515	WWAY	3 NC	660
13 Ms 0215	WJXT	4 FL	990
	Jenny Jones Promo		
Tr	Late PM	E. VA. Plus	
	WYDO	14 NC	562
	WUNM	19 NC	577
	WSFX	26 NC	660
	WUNJ	39 NC	660
18 Ms 0356	WPSX	3 PA	407
Tr	PM	E. VA.	
20 Ms 0405	CKLT	3 NB	365
21 Ms 0440	CBAFT	3 NB	473
Tr	2200	WYDO	14 NC
		WUNM	19 NC
		2300 W36BK	36 VA
22 Tr	0000	W24BI	24 VA
	0025	WRLH	35 VA
	0030	W52AB	52 VA
	0105	W14BN	14 VA
	0130	WUNU	31 NC
	0155	WUPU	65 VA
24 Ms	1233	CKLT	3 NB
	1356	CBAFT	3 NB
Tr	Late PM	E. VA. Plus N.C. 14, 19, 39	
		DX Down Coast Picking Up 73, Roy	

Jim Ayers, 2497 Wind Forest Court, Norcross, GA 30071 — jimayers@raider.net

Equipment: Panasonic 19" TV; CM Quantum 1110 VHF at 30'; Antennacraft P-7 UHF dish w/Winegard PA-4975 preamp at 38' (feedpoint); Alliance HD-73 rotor; RG-8 coax; Hi-Q traps for high band VHF plus UHF (still need low band VHF model) band

February, 1998 (EST)

25 Tr 0758	W52CL	52 GA	90
------------	-------	-------	----

March, 1998 (EST)

30 Tr 0739	WITV	7 SC	271
------------	------	------	-----

April, 1998 (EST)

13 Tr 0731	WPDE	15 SC	282
0737	W51BR	51 SC	183
	IDed via azimuth and TBN website		
0742	WEVT	55 NC	201
0758	WCNC	36 NC	200
	0 khz to local		
0803	W68BL	68 NC	213
	IDed via azimuth and TBN website		
0805	UNID	50	
	w/the Box on azimuth toward Charlotte		
0807	WJZY	46 NC	201
	20 khz to local		
25 Tr 0946	WOFL	35 FL	411
0950	WKCF	18 FL	413

DX on the rise in April. Even so, not much activity. Note: local WNGM-34 is now airing the Box most of the time, and W20AU has been airing the Nostalgia Channel (by error, I assume) for about two months, with scrambled picture resembling the subscription stations of the early 80s. Just a mistuned receiver I would guess. 73s, Jim

Keith K. Smith, 24900 Field St. #49, Flat Rock, MI 48134 (734) 783-5334

Equip.: Curtis 5" B&W TV (Model RT055) portable. Magnavox 13" Colour TV with (CC) decoder (sound & test—4 options each) and digital tuning. RCA "rabbit ears"/coil antenna. Zenith 19" Colour TV.

SPECIAL REPORT: This month's DX is from Eaton Rapids, MI; location is about 6 miles NNW of the city proper and 11 miles SSW of Lansing.

April, 1998

15 Tr 0200	WEYI	25 MI	68
	WDWB	20 MI	71
	WAQP	49 MI	68
	WSMH	66 MI	61
0222	WTVS	56 MI	85
	WTLJ	54 MI	92
0233	W69BJ	69 MI	NOTE #1
	(Lansing WAQP-49)		
1215	WINM	63 IN	75
	WOUC	44 OH	225
	WGVU	35 MI	59
	WANE	21 IN	105
16 Tr 0016	WDCQ	19 MI	79
	0020 WDCP	35 MI	NOTE #2
	0033 WZZM	13 MI	72
	0321 WLLA	64 MI	NOTE #3
19 Tr 1137	WCUM	14 MI	NOTE #4
20 Tr 0334	WSBT	22 IN	100
	WNWO	24 OH	NOTE #5
	WGVU	35 MI	59
	WADL	38 MI	92
	WKBD	50 MI	70
	WTVS	56 MI	85
	WNDU	16 IN	100
	WDWB	20 MI	71
	WWJ	62 MI	88
	UNID	20	NOTE #6
	(3ABN o/u WDWB)		
0350	WXYZ	7 MI	74
	WWTW	9 MI	120
0414	WZZM	13 MI	72
	W61BX	61 MI	59
	(Grand Rapids 3ABN)		

NOTE 1: Host of "You & Me" looks like Lloyd (Lord?) Bentsen.

NOTE 2: These two are ex-WUCM and ex-WUCX, respectively.

NOTE 3: At this time, parallel to WPXD-31, running Worship network. This one, which runs religion and shows like Dobie Gillis and Gunsmoke, is now the WB affil for southwest MI; Kids' WB runs 2:30-5PM, leading with Captain Planet, then the afternoon block. WB primetime runs Mon-Thurs 5-6PM, mostly tape-delayed from the previous evening, and none of the "controversial" shows. (In other words, Nick Freno/7th Heaven/Parent Hood/etc.) Sorry, but I didn't get up in time to see what time Tiny Toons airs!

American Times airs at 7:30 PM M-F.

NOTE 4: signoff also listed 6/21/27, plus LPTVs W46AD Traverse City and W69AV Leland. Carrying "Religion & Ethics Newsweekly" at time of log listed herein.

NOTE 5: They put a movie on here-uncharacteristic, since Nightside normally is on this time on WNWO.

NOTE 6: I cannot place this one at all; nothing in the surrounding states/provinces fit. Is this a new LPTV I was not informed about? I have no idea where this could be from.

Channel 43 in Battle Creek now goes by WZPX. They listed Lansing as part of their primary coverage, although WPXD-31 also covers Lansing & vicinity

quite well. These soon-to-be-PaxNet affil run separate infomercial schedules, though both were often noted with the same commercial at the same time with less than a 3-sec delay! (WZPX-43 runs Shop At Home at night; WPXD-31 runs Worship network starting at 11PM, running this overnight.) So concludes this special report from Eaton Rapids, MI. Next report will be from home in Flat Rock, MI. 7650, Keith

Russell Miller, HC61 Box 86B, Amity ME 04471

Equipment: 2-10 El. Low Band antennas. Spaced 14' apart on a horizontal boom, horizontally polar. 5' above ground on a rotator and wood stand. Equal length coax from baluns fed into hybrid splitter combiner. R.S. 15-1109 PA. Note: Baluns must be in phase, otherwise antennas are 180 out.

April, 1998

02 Ms 0316	WEWS	5 OH	753
	(United Furn. E. Cl.)		
03 Ms 0436	CHAUTV	5 PQ	113
04 Ms 0511	CJCH	5 NS	225
	(mx/w/CICIT VI-MCTV slide)		
06 Ms 0559	WTTG	5 DC	672
	(Two and half min. burst)		
11 Ms 0515	CHRO	5 ON	3/4s" Cable6"444
	(mx/w/CJCH-NS)		
15 Ms 0507	CHRO	5 ON	444
	(mx/w/ABC nxs)		
18 Ms 0526	CBAFT	5 NB	90
	(mx/w/CBS)		
20 Ms 0418	CJCH	5 NS	225
	(mx/w/CBAFT)		

May, 1998

01 Ms	UNID	5 News 5 Logo	
	(circle around 5-thru news)		
02 Ms 0700	WFRV	5 WI	985
04 Ms 0900	WMAQ	5 IL	1022
05 Ms 1215	CICITV	5 ON	629
	(Leroux Auto Parts Chelmsford)		
07 Ms 0607	CJICTV	5 ON MCTV slide	788
	(CICI regular schedule)		

Comments: Thanks to William Hepburn for IDing the CBC 3/4s as CBLT! CJCH mxing often with ON and USA stations is compelling evidence of Backscatter. Bearing west, CJCH is to my SE. Stations up to 250 miles to the rear are able to pass overhead to 200-300 miles west of me, and refract off a meteor back to me with signal strength every bit as strong as forward scatter. This happens often with many stations in on the act. Stations slightly forward of my antenna bearing seem able to backscatter to me but I don't have as much evidence of this.

The hill that my UHF shack is on attenuates signals arriving at elevations lower than five degrees. I don't see stations over 1000 miles via meteor scatter very often. Ex: WFRV at 985 miles seen several times but only during the high speed (and thus high ionization height) ETA AQUARIDS Shower.



There probably wasn't a city on the continent that wasn't excited about the arrival of television, and as you'll see in this 1954 feature copied for the most part from the CICT web site, Calgary was no exception. What began as CHCT-TV had several owners and sets of call letters over the years. Their current ID reflects the growing trend to disregard the legally assigned channel and call letter information, and in its place, emphasize the channel which carries the station on the local cable system.

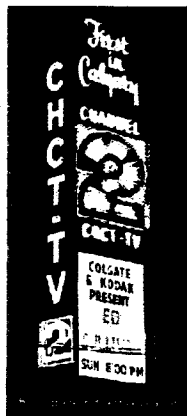
Calgary Television also passed through several hands. We started out as a CBC affiliate owned jointly by CFCN Radio, CFAC and CKXL. In 1967 we were taken over by Selkirk Holdings. And eight years later we severed our ties with CBC. In October of 1988 Calgary's only independent station was sold to Maclean Hunter who, a few months later, sold us to Western International Communications. Today, our WIC family has grown to include radio stations across the country as well as CHCH-TV in Hamilton, CITV in Edmonton, CKRD in Red Deer, CISA in Lethbridge, CHBC Kelowna, CHEK-TV in Victoria and BCTV in Vancouver.



Over the years, we've also shaped and re-shaped our station image. Starting out as CHCT-TV, we evolved into The Rockin' Deuce in 1961. A decade later we changed our call letters and began identifying ourselves as CFAC. With our independence in 1975, we became known to Calgarians as 2&7. And most recently, on September 7, 1993, we freshened up our look to become Calgary 7, CICT - Independent Calgary Television.

Today, we're proud of the image which has won us a national CANPRO Gold Medallion and an international Broadcast Designers Association Silver and Bronze Medal. It's rewarding to have our efforts recognized by our industry peers. Of course, more importantly, it's even more satisfying to be recognized and supported by our loyal viewers. Granted, we may not be creating the public frenzy of 1952, but we're still proud to be Calgary's first television station, still exploring bigger and better ways to keep the business exciting.

Calgary Television



Try to imagine the frenzy created when Calgary's first television station hit the airwaves! CHCT made front page news with a picture of people lined up outside a store window straining their necks for a good view of the television sets on display. The headline announced: "Calgary Braves Cold To Watch TV". Both local newspapers, The Albertan and The Herald, dedicated entire supplementary sections of their papers to commemorate our first broadcast on October 8, 1954.

Here is a brief sample of headlines, ad promises and choice quotes from the "TV Comes To Calgary!" section printed just days before we transmitted the city's first ever TV program:

- \$400,000 Worth of Equipment Provides Calgarians With TV
- Eaton's Viking Deluxe 21" Console. Rich Walnut Finish. Each \$429.50 (2 months salary for the average worker)
- Don't Darken Room When Watching TV
"In order to avoid undue eyestrain, balance light in room with light coming off screen."
- Television Shows Here Among Best Produced
- TV Set Should Blend With Other Furniture
- TV Can Be Basic Item In Smart Room Decor
- Aerials Bring "New Look" To Rooftops Of Calgary
- Passing Cars Can Mar TV Pictures
"TV experts say this sometimes can be avoided by pointing the antenna away from the street side of the building..."
- Producing TV Shows Ulcer-Creating Task

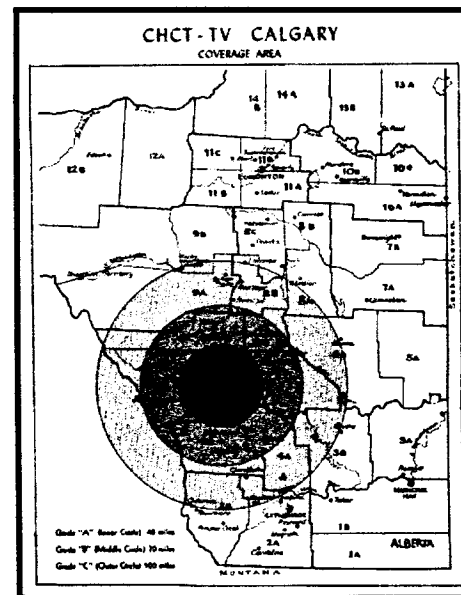
Hundreds of Calgarians flocked to our transmitter site seven miles west of the city limits to watch CHCT engineers raise our first antenna. So great was the demand for the miracle "modern" invention, that dealers had trouble getting their orders filled.

As time passed, some of the novelty surrounding TV wore off. But Calgary Television employees experienced enough change and challenge to keep us constantly on our toes.

In 1955, CHCT moved from the transmitter site on the old Banff Coach Road to a renovated badminton club/sea cadet drill hall at 955 Rideau Road S.W. Two decades later, with the Rideau Road studios bursting at the seams, news, sports and commercial production expanded to the Telecenter at 430B - 36 Avenue S.E. And the accounting department was at yet another location, at the Rideau Professional Building on 4 Street S.W. It wasn't until 1981 that station staff were united under on roof at our current

38 222 - 23 Street N.E.

Editor's notes: CHCT was among the stations I logged as a teenager in North Dakota in 1955. It was short E-skip and occurred about 10PM. A copy of their coverage map and QSL note (from my personal collection) are reprinted below.



CHCT - TV
100,000 WATTS

P.O. Box 550,
955 Rideau Road,
CALGARY, Alberta.

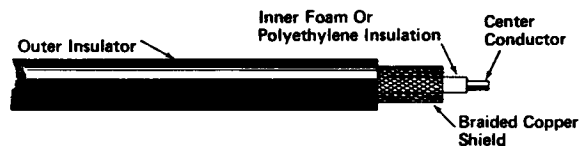
Thank you for your letter advising you received our television signal in your area. We are very pleased to hear of this and appreciate your interest in forwarding the information. We hope you have further success in receiving other long distance TV stations.

Kindest regards,

Robert S. Stevns
ROBERT S. STEVNS, Manager

LOW LOSS COAXIAL CABLE: THE UHF DXER'S EDGE

by MIKE STONE



1/2" aluminum CATV hardline (Times Fiber T10-500 and equivalent) 87% velocity of propagation	1.58 dB/100 ft.	2.35 dB/100 ft.	2.82 dB/100 ft.
	440 MHz-----900 MHz-----1300 MHz ch 14.....47...69		

3/4" aluminum CATV hardline (Times Fiber T10-750 and equivalent) 87% velocity of propagation	1.04 dB/100 ft.	1.54 dB/100 ft.	1.86 dB/100 ft.
---	-----------------	-----------------	-----------------

What good does it do to have a tall tower, a high gain, multi-element antenna array or dish, a very sensitive GaAsFET preamp and a hot TV tuner if your coaxial cable line is quite inferior and lossy at 400 MHz and above? This situation is unfortunately more often the case at many UHF DX shacks. Poor to fair performance usually results if strict attention to detail of the chosen line of coaxial cable is not met.

If you are just starting out - we advise you to sink a few extra bucks into your coaxial cable line before purchasing a mast mounted preamplifier or a better antenna. Forget about RG-59 types if you are a serious UHF'er. Now even Radio Shack sells RG-6, which is better, but not as good as the harder to find RG-11 coax, which is more frequently used in long runs in the MATV trade, in institutions such as motels, schools, hospitals, etc.

The next step up is to go to regular HARDLINE, as used by the cable TV people. Be careful of used surplus line runs commonly found at Hamfests, especially easily available 1/2 inch 75-ohm CATV hardline cable. Inspect it carefully. Ask why it was taken down? Some runs of Andrews 7/8 inch line have been known to be lossy and even RG-8 50 ohm amateur radio coax might outperform this cable if the used and worn out hardline has been up, in service and weathered for a number of years. New 7/8 inch hardline should have a 0.5 dB loss factor at 400 MHz. Most 7/8 material purchased at hamfests will show about a dB or two loss per hundred feet (which is pretty good). Always use commercial grade brass hardline connectors. Homebrewing your own can sometimes result in more loss at the connector than over the entire line (unless proper designing, machine and metalwork is utilized). The old rule applies - "You get what you pay for."

Many UHFers believe that purchasing a much higher cost "double shielded" line at 75 cents to a dollar a foot is a better way to go. Not true. These cables are manufactured not for low-loss but for excellent shielding (anti-interference).

Don't skimp on coax! Use the lossy cable only for the low band VHF.

PUBLISHER'S NOTES

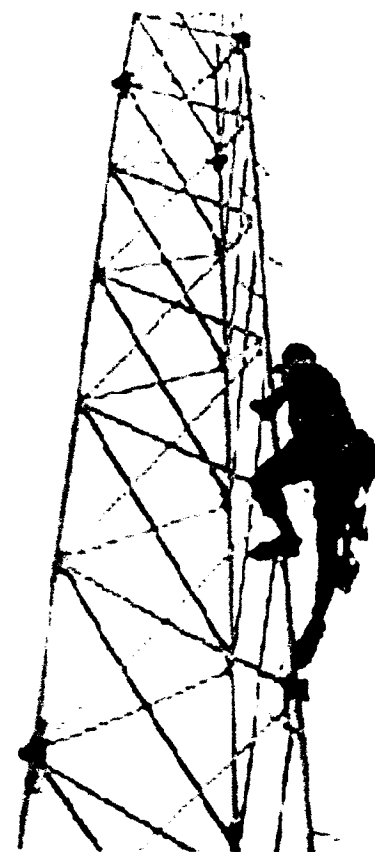
ON THE COVER this month is DXer Michael Condon's ASTOUNDING DX antenna array. In last month's issue, he told us about his experience with lightning at his hilltop DX site in the Madison area. Now we know why it "likes" his system so much—but just imagine his tropo DX results with that system! Chances are, Mike's watching YOUR locals right now! Waaaaay up at 160 feet, at the top of Mike's tower, are a Channel Master 3617B VHF Crossfire "Stratobeam" and a modified Channel Master 7-foot dish. On THIS page, to the right, you can see a close-up look of the bottom part of this tower. Way to go, Mike! Thanks for the snapshot—wish we could print our covers in color; that tower sure looks pretty against a blue sky! Thanks to Mike Bugaj for passing along the image used on this page

THANKS also to Bruce Elving and Greg Coniglio for material used on recent VUD covers.

NOTE to all VUD column editors: be sure your columns are being mailed to me at my home address in Buffalo (1907 Seneca St., Apt. 1, Buffalo NY 14210) mailing to the club PO Box will just cause a forwarding delay, and PLEASE cease mailing material to any of the old club addresses.

VU DESTROYED? If your VUD was lost or mangled in the mails recently, be sure to drop us a line and tell us—a free replacement will be sent. Most of the time, the USPS delivers, as advertised. However, we've found that the both the thinnest and the heaviest VUD editions are most likely to be chewed up by mail processing equipment. We have no good explanation for this, but we're assured that postal authorities plan to use that one-penny increase to make it stop. Yeah, right!

—Bill Thompson



TIME FOR YOU TO RENEW?

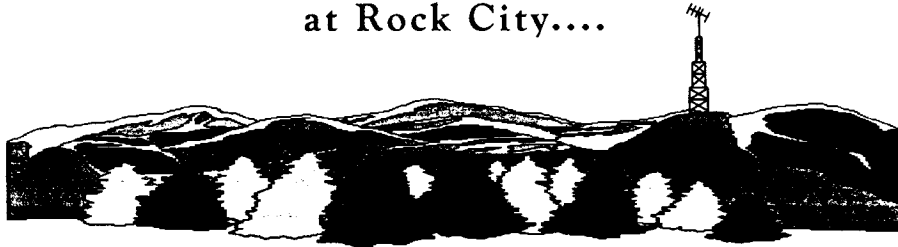
PLEASE NOTE THE NEW CLUB ADDRESS:

WTFDA,

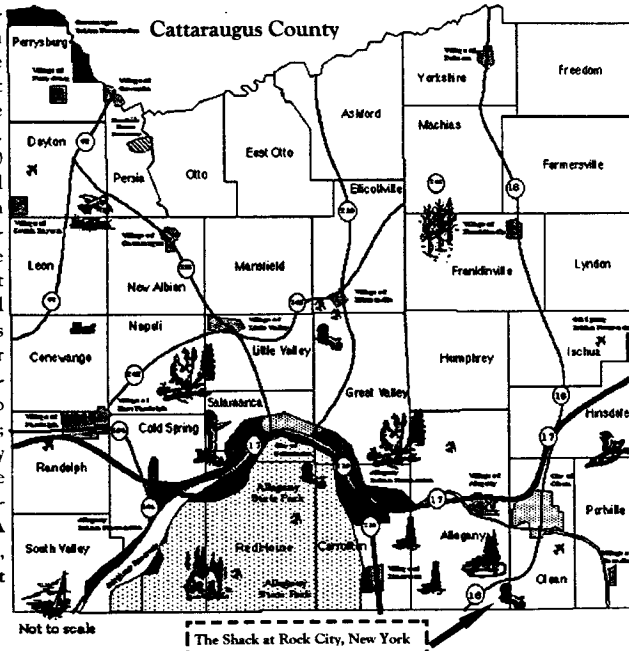
PO BOX 501,

SOMERSVILLE, CT 06072-0501

Attend the 1998 WTFDA Convention in the hills of south-western New York State at Rock City....



Ho-Sta-Geh Road is only a short 7 1/2 miles south of exit 26 (Olean, NY) of the "Southern Tier Expressway" (route 17) on Hartzfelt Mountain. Dc central is a rustic cabin on three wooded and quiet acres on the rim of the Allegheny Mountains. From a height of 2350 feet above sea level and with few high powered local stations; dx'ing can be quite interesting at times. Lucia's Motel and Supper Club is the official motel for the '98 WTFDA Convention. Call early to reserve your room; space is limited to only nine (9) units. Be sure to say that your attending the WTFDA CONVENTION, July 31st, August 1st thru 2nd.



Area motels are:

**Lucia's Motel & Supper Club	9 units	rates starting at \$37/night	1-716-372-0039
De Soto (Best Western)	76 units	rates starting at \$40/night	1-800-325-0043
The Castle Inn	164 units	rates starting at \$55/night	1-800-422-7853
The Old Library Inn (B&B)	8 rooms	rates starting at \$65/night	1-716-373-9804

All rooms are based on single occupancy; add 8% NYS tax.

**The official motel of the '98 convention.

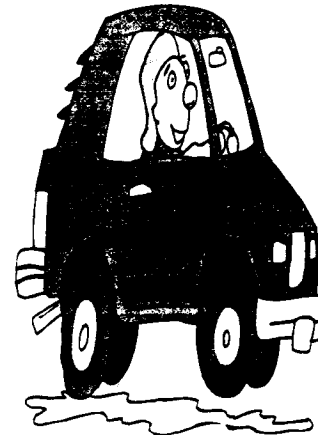
Convention registration fee, \$25.00 -- goes toward Friday evenings pizza & wings, Saturday Banquet and snacks/drinks. Send \$1.00 for an information packet (deductible if you register) to Dave Nieman -- 12284 Nice Road -- Akron, NY 14001-9408. Packet includes convention schedule, site maps, 'Greater Olean Area Events & Activities' and 'Shop The Olean Area' guides.

Stop what you're doing; it's time to make plans to attend the 1998 WTFDA CONVENTION at "The Shack" Rock City, New York.

This years event will be held July 31th to August 2nd, 1998.

Hosted by: Dave Nieman

with co-host Greg Coniglio



Here's an abbreviated schedule:

Fri. 11:00AM	convention starts, people arrive at the cabin get reacquainted.
early afternoon	AM/FM station tour.
6:00PM	pizza & wings party at the cabin; DX until crack of dawn.
Sat. c. o. d.	early risers arrive at the cabin for coffee, donuts & morning tropo.
noon	break for lunch (on your own); checkout area points of interest.
5:00PM	banquet at Lucia's Supper Club, club meeting.
7:00PM	arrive back at the cabin; DX till crack of dawn.
Sun. c. o. d.	early risers arrive blurry eyed back at cabin for coffee, donuts & morning tropo.
noon	things wind down, we say our good byes till next years convention.

Thanks for stopping.

Registration Deadline 6/30/98

1998 WTFDA Convention

at Ho-Sta-Geh, Road -- Rock City, New York

NAME:

ADDRESS:

CITY:

STATE/PROV

ZIP/POSTAL CODE:

Check one:

Enclosed is a \$1.00 (deductible if you register for the '98 WTFDA Convention) for my convention information packet.

Enclosed is my registration fee, \$25.00** - send me my convention information packet. All fees are applied to convention costs.

** Advanced registration only, make check or money order payable to: David J. Nieman, travel and lodging arrangements are the responsibility of the convention attendee.

Mail check or money order to: Dave Nieman -- 12284 Nice Road -- Akron, New York 14001-9408